

**FREE - TAKE ONE!**

Vol. 29 No. 45

**FEBRUARY 2, 2023**

800-543-8271 • 800-665-8875

# WEEKLY TRADER MAGAZINE



Find us on Facebook

@myweeklytrader  
AUCTIONS PG. 7

**VISIT OUR NEW WEBSITE! MYWEEKLYTRADER.COM**

**You pull it,  
we sell it...**

**CHEAP!**



**Lebanon, MO**

22395 Rt. 66

**417-588-3555**

Fax 417-588-8955



# U★PULL★IT

**SELF-SERVICE AUTO PARTS**

We also have a large inventory  
of used tires and be sure to check  
out our used car lot!

Mon.-Fri. 8:00am-6:00pm • Sat. 8:00am-4:30pm

**WWW.SSUPULLIT.COM**

Located next to S&S Recycling.



**For All Your Metal Recycling Needs**

**Lebanon, MO**

22395 Rt. 66

**417-588-3555**

Fax 417-588-8955

**Mtn. Grove, MO**

8930 First Rd

**417-926-3360**

Fax 417-926-0180

**Roll-off, Trailer, and  
Mobile Crushing  
Services Available**

Monday-Friday 8:00am-4:30pm (Closed 12pm-1pm Lunch)  
Saturday 8:00am-Noon

email: [contact@ss-recycling.com](mailto:contact@ss-recycling.com)

**Buyer of all types of scrap metal.**



# \$500 OFF LS BACKHOES

Since they don't require removal of the lower 3-point hitch arms, our sub-frame mounted, quick-attach backhoes are time-savers even before you start digging in.

Call for more information about adding a backhoe to your tractor, or add one to a NEW tractor.

\$500 Off In-Stock Backhoes.  
Offer good Jan-Feb 2023



**WCT Farm & Lawn**  
**417-859-4311**  
**SALES • SERVICE • PARTS**  
**3299 E. EVERGREEN ROAD**  
**STRAFFORD, MO**





## RB16 SERIES

REAR BLADES  
20-40 HP 60", 74", 84" Widths

- Cat. 1 hitch
- 7 Forward angles; 3 Reverse angles
- 5 Tilt positions
- 12" Offset left or right
- 14" Moldboard height
- 1/4" Moldboard thickness
- Landscape Rake adaptable

Getting Chores Done  
**LAND PRIDE**  
*does that.*



[www.landpride.com](http://www.landpride.com)

For Outstanding Products & Service

# AGRI-ENTERPRISES

1-1/2 Miles South Of Licking, MO On Hwy 63  
573-674-2203 • 1-800-653-7152 • [www.agri-enterprises.com](http://www.agri-enterprises.com)

**HIKING THE OZARKS BOOK: A Guide to the Area's Greatest Hiking Adventures.** \$6.75. 417-532-2045. Lebanon. (Leave message and phone number).

**WEATHERED BARN WOOD SIDING:** 10" wide. 573-729-7226. [www.pineridgerustic.com](http://www.pineridgerustic.com) Salem.

**LOG SIDING:** 2X8 Pine/Western Cedar [www.pineridgerustic.com](http://www.pineridgerustic.com) 573-729-7226. Salem.





**WE HAVE MOBILE HOMES:** Instock new arrivals (8) homes, need to go as soon as possible! 573-499-9993. [columbiadiscountshomes.com](http://columbiadiscountshomes.com)

**THE CIVIL WAR ILLUSTRATED HISTORY BOOK:** 425 pages, \$12.50. **MEMORIES OF AN OZARKS PIONEER & CIVIL WAR Soldier James Frances Coatney, Private Arkansas Union Calvary, Company D,** \$6.50. 417-532-2045. Lebanon. (Leave message and phone number).

**VOTED #1 BEST Preowned Car Dealership**

## TIM'S USED CARS

(573) 341-3828 • 1334 South Bishop (Hwy. 63) • Rolla, MO  
Next to Hwy CC • [www.tims-used-cars.com](http://www.tims-used-cars.com)

 <p><b>2018 NISSAN PATHFINDER SV</b> V-6, 4x4, 3rd row seating, Power Equipped, 100,xxx Miles <b>Only \$17,900</b></p>	 <p><b>2014 RAM 1500 TRADESMAN</b> 2WD, quad cab, V-6 auto, Power Equipped, 72,xxx Miles <b>Only \$19,500</b></p>	 <p><b>2008 GMC 1500</b> Crew cab, 4x4, SLE, 5.3 V-8, power equipped, <b>Only \$8,900</b></p>
 <p><b>2017 BUICK ENCORE</b> FWD, 4 cyl auto, power equipped, 64,xxx Miles <b>Only \$16,900</b></p>		

LARGE SELECTION OF CARS, TRUCKS, SUVs & VANS!

## 0% for 4 Years



**HEATMOR Outdoor Wood Furnace**  
as low as **\$238** per month

### HEATMOR MIDWEST

Licking, MO 65542 • 573-674-2962

**USED MOBILE HOMES:** Call David at VILLA HOMES IN ROLLA 573-578-8072. Rolla.

**BUYING MOBILE HOMES:** Call David at VILLA HOMES IN ROLLA 573-578-8072. Rolla.

**TINY HOMES:** We gottem 573-881-3283

**NEW MOBILE HOME STOCK:** Just received (5) new units, they gotta go! 573-657-2176. amegamobliehomes.com

**USED DOUBLE-WIDE:** \$34,900 WOW!!!! This won't last! 573-657-2176. amegamobliehomes.com

**TRUE MODULARS:** 30 to 60 day delivery available, 3 and 4 bedroom 573-657-7040 chateauhomes.net

**I BUY.....used mobile homes.** Call or text 573-338-6250 or email [GregS.CDH@outlook.com](mailto:GregS.CDH@outlook.com)

**DARDEN PROFESSIONAL TIMBER HARVESTING, BUYING STANDING TIMBER:** Great prices, improve wildlife habitat and improve forest health. State Certified & Fully Insured! 573-247-4808. Salem.

**WANTING TO BUY:** Savage Rifle Model 10ML. 636-239-2695. Washington.

**EARN \$60,000/YEAR PART-TIME:** In the livestock or farm equipment appraisal business. Agricultural background required. Home study course available. 800-488-7570 or [www.amagapraisers.com](http://www.amagapraisers.com)

**110 PORCELAIN POCKET WATCH DIALS:** Perfect for arts & crafts. \$100. 573-764-3517. Call in PM.

**SLIGHTLY USED PUZZLES:** Will sell or trade. 417-818-3469. Stafford.

**LIONEL TRAIN SET:** Steam engine, tender, caboose and other car, track, and transformer. \$195. 573-364-7465. Rolla.

**MODEL 1911 FRAME 8-SHOT C02 PISTOL:** Like new, in box with C02 cartridges, 4 clips, pellets & all paperwork. \$95. 573-364-7465. Rolla.



## Meadowview Dutch Market

Bulk & Surplus Groceries • Prices Subject to Stock on Hand

Call to Order  
417-993-3017

Sale Dates February 1<sup>st</sup>, 2023 to  
February 7<sup>th</sup>, 2023 while supplies last!

**DELI SPECIAL**

LEBANON BOLOGNA .....REG. \$6.99 .....SALE \$6.49

FARMER'S CHEESE .....REG. \$5.50 .....SALE \$4.99

**TRY our Fresh Homemade DELI Sandwiches: TURKEY, HAM, ROAST BEEF, ITALIAN, BLT'S, PULLED PORK AND BLT PULLED PORK (MADE YOUR WAY)! COME IN OR CALL to order! ALSO Custom Deli trays! Veggie OR FRESH Meat-N-Cheese!**

*Pineapple Tidbits*  
in 100% Juice

**79¢**  
4-4 OZ.




*Polska Kielbasa*

**\$4.75**  
3 LBS.



*Ham Steaks*

**\$1.99**  
LB.



*Bonus Special Mozzarella*

**\$1.39**  
LB. APPROX 20 LB. BLOCK



*Turkey Chili*

**99¢**  
LB.



*Pork Chops*

**\$1.99**  
LB.



**TAKING ORDERS FOR Putts Tree Ripened Citrus**  
*Need orders by Feb. 3rd*

**Oranges \$28.99** FOR 25 LBS.  
and  
**Mandarin Oranges \$41.99** FOR 25 LB. CASE



**MEADOWVIEW DUTCH MARKET**  
417-993-3017 Hours: Mon-Thurs 8-5pm  
Fri 8-6pm • Sat 8-5pm  
23 Miles West on Hwy 64 • Right on T Hwy  
9 miles • Left on E Hwy 1 mile on Left

**DUTCH COUNTRY STORE, LLC**  
573-378-4395  
Hours: Mon-Thurs 8-5pm  
Fri 8-6pm • Sat 8-5pm  
5 miles East of Versailles off Hwy C on Kelsay Road

**NOW ACCEPTING CREDIT, DEBIT CARDS & EBT**

**FIREARMS:** Professional Repair, Restorations and Appraisals. Baron's Gunsmithing. 573-363-5801. Camdenton.

**3-MOTOR MANUALS (CARS):** 1935-1952 for \$20 + Postage. 1935-1949 for \$15 + Postage. 1964-1970 for \$30 + Postage. 417-260-0941. Raymondville.

**REGISTERED HEREFORD & ANGUS BULLS:** Home raised, Some Show-Me Select Qualified. 573-701-7828. Belgrade.

**1500 VINTAGE WRISTWATCH DIALS:** \$100. 573-764-3517. Call in PM.

**FIRST GEAR KILIMANJARO MOTORCYCLE COAT:** XL, but runs smaller. Zip out liner, Kevlar padding on shoulders & elbows, vented, rainproof. Like new. \$95 FIRM. 417-260-0941. Raymondville.

**LIGHTLY EXPERIENCED GOLF BALLS:** \$3 a dozen. 417-818-3469. Stafford.

**RUBBER & LEATHER BOOTS AND 5-Buckle OVER SHOES:** Men's 11, Women's 7, some insulated. \$15-\$40 obo. 636-239-2695 or 314-560-5700. Washington.

**BURIED BY TABLE ROCK LAKE BOOK:** About old towns, cemeteries, stores, etc. that were covered by the lake, 188 pages, \$12.00. 417-532-2045. Lebanon. (Leave message and phone number).

**I BUY:** Old lever action rifles & Revolvers. Call Matt 573-280-5638. Sunrise Beach.

**NOW BUYING STANDING PINE TIMBER:** \$0.20 board ft. International Scale. All stumps and slash mulched; no mess left behind. We also log small acreage, mobile sawmilling available as well. 417-991-9280.



**OMAR'S LOGGING**

⇒ Oak & Walnut  
⇒ Excellent Prices  
*Amish Owned & Operated*



**LEAVE MESSAGE: 417-741-0440**  
Hartville & Surrounding Areas

**CENTRAL BOILER** **CLASSIC EDGE**  
TITANIUM HDX

26% Tax Credit on EPA certified Central Boiler Classic Edge HDX models and installation. Call today to learn more!

**Outdoor Wood Furnace CentralBoiler.com**

Yarbrough Equipment Sales & Services, Inc.  
9776 E. State Hwy OO • Strafford, MO  
417-736-2303 • 1-866-286-6901 • www.yarbeq.com



The Classic Edge 360, 560 and 760 HDX are U.S. EPA Certified



**Wright Spray Foam Insulators, LLC**  
Commercial & Residential  
**Call for FREE Estimates!**

Ervin Gingerich 417-926-2052  
B. Eli Yoder 417-746-4932

**1970s KIDS METAL STOVE & FRIDGE:** Nice Lithographic paint, 18" wide x 36" high. \$75. 573-364-7465. Rolla.

**1962 HARLEY SPORTSTER 900CC:** original distributor. \$50. 573-764-3517. Call in PM.

**MISSOURI OZARKS BOOKS:** Walkin' Preacher of the Ozarks Guy Howard, \$12.50. Fishes of Missouri \$6.50. Butterflies and Moths of MO \$7.50. Bittersweet Book \$10. 417-532-2045. Lebanon. (Leave message and phone number).

**DRAPES AND CURTAIN RODS:** Off-white, various sizes, \$15 for all obo. 636-239-2695 or 314-560-5700. Washington.

**ST. LOUIS CIVIL WAR SITES OF THE FIGHT FOR FREEDOM:** By Peter Downs, 207 pages, \$7.50. 417-532-2045. Lebanon. (Leave message and phone number).

**3 GENTS WITTNAUER WRIST WATCHES:** 10k gold + 23J. All \$200. 573-764-3517. Call in P.M.

**HARLEY FAT BOBS:** Custom flame paint w/ gas caps + lines. \$100. 573-764-3517. Call in P.M.

**ANTIQUE HOG OILER:** \$35. 573-308-5884. Rolla.

**5 GAL. PLASTIC BUCKETS:** with lids. \$3 each. 636-239-2695 or 314-560-5700. Washington.

**NEW SQUARE D RAINPROOF 50AMP DISCONNECT:** \$160. 636-239-2695 or 314-560-5700. Washington.

**NOW BUYING STANDING TIMBER IN THE LAKE OF THE OZARKS AREA:** Free estimates. Littleton Storm & Timber Services. 217-836-4985.

**AB LOUNGE SPORT:** Abdominal exercise chair. Like new. \$50. 210-787-8222. Linn Creek.

**GRASSHOPPER LAWNMOWER 718:** 52" cut, zero turn. Needs an engine. \$200. 417-753-2747.

**BASSET HOUND PUPPIES:** Multiple colors. Might trade for whatever. 417-650-0405. Lebanon.

**FREE MOBILE HOME REMOVAL:** Of any single or double wide in livable condition. Call Charlie 573-241-3676. Licensed & insured.

**YOUR FULL SERVICE AUTO BODY SHOP**

*Call today for an appointment or estimate!*

**DAVIDSON'S Restorations, insurance jobs, and more!**



**CUSTOM AUTO BODY 417-288-1589 • 115 Lincoln St., Buffalo, MO • @DavidsonCustoms**

**COLT REVOLVER DEALER CATALOGS:** Circa 1950's + 1960's. All for \$100. 573-764-3517. Call in P.M.

**USED JET HOME POLLUTION CONTROL PANEL:** Model CP700. \$65. 636-239-2695 or 314-560-5700. Washington.

**2<sup>nd</sup> CUTTING GRASS HAY:** \$8/Square bale. 573-308-5884. Rolla.

**1890 GOLD TESTING KIT:** Glass acid beakers + antique wooden case. \$100. 573-764-3517. Call in PM.

**2 GOODYEAR WRANGLER TIRES:** Kevlar LT245/70R17, all terrain, \$100 for the pair. 417-417-260-0941. Raymondville.

**ALFALFA ORCHARD GRASS:** Small squares for sale. 2<sup>nd</sup> & 3<sup>rd</sup> cutting. \$10 per bale. Bundled in 21 bales per unit. 573-539-2060.

**HARLEY 45 SOLO:** factory rear brake drum + sprocket. \$150. 573-764-3517. Call in PM.

**NEIGHBORHOODS HOME IMPROVEMENT STORE:** 417-533-5080. Lebanon.

**S&E CUSTOM LUMBER:** 417-322-0898. Grovespring.

**HARLEY PANHEAD DISTRIBUTOR:** original, chrome + complete. \$125. 573-764-3517. Call in PM.

**RAINBOW VACUUM CLEANER:** Excellent Condition. \$200. 417-260-0941. Raymondville.

**COWBOY CORGIES:** Born 1-9-23, UTD on shots and wormer. Great prospects for stock dogs or family pets. \$400. 417-701-1372. Hartville.

**NEED YOUR CDL?????:** We furnish the truck, trailer and teach all requirements for ELDT. Then we will go to the State Highway Patrol for the test. Requires only 2 days of Road and Range training and **MUCH CHEAPER WAY TO GET YOUR CDL.** Jefferson City, Strafford, Willow Springs MO. Call (573)-353-2853 for more information [Info@capitalcdltraining.com](mailto:Info@capitalcdltraining.com)

**2005 PT CRUISER:** Needs timing belt. \$500. 417-859-4401. Marshfield.

**WANTED TO BUY:** Pup/Short Tractor Trailer (Trailer) (for storage). 573-437-2568.

**WE BUY AND SELL**  
new and used mobile homes



**(417) 501-1061**

**POOL TABLES:** Installations, moves, recovers, repairs, accessories, etc. 573-646-1700.

**1x8 BOXCAR/SHIPLAP:** \$0.79 ft. V-Groove or Flat. Douglas fir, cabin grade. By the board or bundle. American Made General Store, 1542 US Hwy 60, Rogersville, MO. Call: 417-753-8020.

**FOR SALE BY OWNER:** 60 acres, power, well, septic, portable cabin, call or text. 417-349-0692.

**CHIHUAHUA PUPPIES:** 4-months-old females, cream colored. Two males will be ready in four weeks. Call for pricing. 417-349-3058.

**HOGS:** Already set out and ready for butcher, 4 available at end of February, more available later in the year. Call or text 573-453-8470. Salem.

**FOR SALE:** 32" Patio Table and two Chairs. \$50. 417-288-6714.

**FOR SALE:** 4 Drawer Wooden Chest \$5. 417-288-6714.

**2 BLUE HEELER & 3 RED HEELER PUPPIES:** Full blooded. 417-664-5926. Conway.

**WANTED:** 1974-85 Chevy Tandem Axle Dump Truck, fixable. Leave message 573-422-3482. Vienna.

**FOR SALE 2022 RAM PICK-UP:** Crew cab, 4x4, loaded, only 6,500 miles, Cummins diesel. No Sunday calls 417-733-2068. Buffalo.

**KIOTI DK35:** 4 Wheel Drive, 288 Hours, \$6,000. 636-399-4688. Robertsville.

**PEMBROKE WELSH CORGIES:** D.O.B. 1-5-22. Up to date on shots & wormer. \$300. 417-259-9738.

**2 BLACK TRI TOY AUSSIES:** 1 female & 1 male. 417-733-7062. Conway.

**AUSSIE/BORDER COLLIES:** Born 1-9-23, UTD on shots and wormer. Born on the farm! Great prospects for stock dogs or family pets. \$200. 417-701-1372. Hartville.

**NEW IN BOX MCGANN MANUAL ROCKER RECLINER:** Brown, leather looking fabric upholstery. \$350. 417-693-0389. Conway.

**PROPANE WALL HEATER:** 15,000 BTU. \$100. 417-321-1928. Osceola.

# OFFICIAL TRACTOR OF TOUGH™

INTRODUCING THE ALL-NEW 5100 SERIES



**Marshfield Machinery Inc.**  
222 E. Madison • Marshfield, MO 65706  
417-859-2117 • [www.marshfieldmachinery.com](http://www.marshfieldmachinery.com)

\*2018 data including all Mahindra group brand sales. MahindraUSA.com © 2020 Mahindra USA Inc.

**Mahindra**  
Rise.

**NEW MAHINDRA TRACTORS**

11626 4WD & LDR 26HP  
IN STOCK

2638 4WD & LDR 38HP  
IN STOCK

4540 4WD & LDR 41HP  
IN STOCK

4550 4WD & LDR 48 HP  
IN STOCK

**USED TRACTORS**

MF 4609 90 HP 4WD LDR  
45,000

MAHINDRA 2638 38HP 4WD LDR  
24,000

MAHINDRA 1635 35HP 4WD LDR  
19,500

AC 7010 106 HP CAB 9,500

MF GC1705 23HP 4WD LDR  
7,500

MF 135 36 HP 2,750

**USED ROUND BALERS**

NH RB780A 5X6 MESH 7,500

HESSTON 560 5X6 2,000

**USED MISC.**

TRUAX 6FT NOTIL DRILL 3PT  
10,000

SITREX 8 WHEEL RAKE 1,750

M&W 8 WHEEL RAKE 1,750

LELY 8 WHEEL RAKE 1,750

**Marshfield Machinery Inc.**  
222 E. Madison  
Marshfield, MO 65706  
417-859-2117  
[www.marshfieldmachinery.com](http://www.marshfieldmachinery.com)



# ESTATE AUCTION AUCTION

EVERTON, MO

Due to the deaths of the late Dean & Carol Ellingsen we will sell the following Automobiles, Tractor, Machinery, Cattle Equipment, UTV, Tools, Household, Collectibles and Misc. at the Farm from Ash Grove go West on 160 Hwy. to FF Hwy. Go North 1.4 miles to E. Dade 152 go West 6/10 Mile to the Auction, or from Everton, Mo. On 160 Hwy. Just North of the School go East 2.3 miles on S. Dade 215 & E. Dade 152 to the Auction on

**Sat. Feb. 11, 2023 at 9:00 am**

**WATCH FOR AUCTION COMPANY SIGNS • LUNCH SERVED**

**FOR MORE PICTURES GO TO: WWW.BRUCEANDLEANAUCTION.COM**



**AUTOMOBILE'S - UTV**

- 1981 Chevy Silverado 10 Restored Pickup V-8 Motor, Automatic Transmission, 104,291 Miles, Good Rubber, Rhino Bed Liner, Garaged
- 1974 Pontiac Catalina 4 Door Car, V-8 Motor, Automatic Transmission, Garaged, Running
- 2017 Can-Am Defender HD 8 BRP UTV, Cab W/Heat, 4 X 4, Automatic Transmission, Dump Bed, Front Winch, W/3926 Miles, One Owner

**TRACTOR-EQUIPMENT**

- John Deere 2240 open deck 50 HP Diesel Tractor 5136 Hours, New Rubber, 8 Speed High/Low Transmission, 3 Pt. Hitch, Mounted Suit Case Weights on Front, Good Condition
- Bush Hog Model 2815 Brush Hog 540 rpm, Solid Tires, (like new condition)
- Bush Hog Model BH 316 3pt. 6' Brush Hog (very good condition)
- Bush Hog RDTH 84 3pt. Finish Mower (very good condition)
- Front-end Bale Spike
- 3pt Hyd. Bale Unroller
- 3pt Bale Forks
- 6'X8' Single Axle Military Flat Bed Trailer
- 5-6 Bar 12' Corral Panels
- 8-6 Bar 10' Corral Panels
- 4' Framed Gate/Panel
- Misc. Gates & Panels
- Wooden Mineral Feeder
- 8' Concrete Feed Bunk
- Approx. 200 New & Used 5' to 6 1/2' Steel Post Barbed & Woven Wire
- 4 Rolls High Tinsel Wire
- Bundle of Fence Staves
- Approx. 100 Poly Step-in Electric Fence Post
- 8 Electric Fence Wire Reels
- Approx. 20 Bales of Straw
- Poly Stock Tank
- Poly Bottom Bunk

**MOWER-TOOLS-MISC.**

- Country Clipper XLT 30 Zero Turn Riding Mower, 60" Cut, Kawasaki FR730V Engine, 112 Hours (like new)
- Little Wonder 10 hp High Output Wheeled Leaf Blower
- Grizzly 20" Thickness Planer
- Grizzly 1 1/2 hp Table Saw
- 6" Jointer/Planer
- DeWalt Grinder on Stand
- Lincoln 225 amp Welder
- 9 & 11 Drawer Tool Boxes
- Stihl FS94R Weed Eater
- Stihl BG86 Leaf Blower
- Alum & Poly Ladders
- Coleman 60 Gallon 6hp Upright Compressor (needs motor)
- 36" Water Filled Roller
- Craftsman 42" Lawn Sweeper
- 12 Volt Seeder
- Log Chains
- Horse Collar & Misc. Tack
- Ratchet Calf Pullers
- Misc. Vet Items
- Alum. Loading Ramps
- 17' Fiberglass Canoe
- Ant. Single Horse Drawn Sleigh
- Misc. Hand & Garden Tools
- Lot of Rods, Reels & Tackle Boxes
- Misc. Hunting Items, Popup Blind
- Bikes
- Lot of Snow Skies
- Gas Cans
- 90" Hartzell Air Plane Prop
- 6 Cyc. Air Plane Engine
- NIB Toilet
- Lot of Misc. Lumber
- 15 Bags of Wood Pellets
- Glasstop Patio Table & Chairs
- Porch Bench
- Wheeled Walker

**HOUSEHOLD-ANTIQUES-COLLECTIBLES**

- Oak 6' Entertainment Center
- 2 Cushion Hide-a-bed
- 3 Cushion Divan
- Ocas. Chairs
- Misc. Sm. Tables
- Pine Bunk Beds
- Ant. Folding Bilhorn Telescope Pump Organ in Wooden Case
- Oak Wall Crank Telephone
- Treadle Sewing Machine
- Gate Legged Table W/4 Chairs
- 2 Cedar Chest-Quilt Boxes
- Oak Highback Bed
- Marble Top Dresser
- Oct. Table
- Lrg. Flat Back Trunk
- Wooden High Chair
- 2-Oak 4 Drawer File Cabinets (nice)
- 3 Metal Airplane Wall Hangings
- Pictures & Wall Hangings
- 2 Stone Jugs
- Sm. 2 Burner Kerosene Stove
- Piano Bench
- 4 Bar Stools
- Glasstop Coffee Table
- Floor & Table Lamps
- Area Rugs
- Ant. Glassware
- Misc. Pots, Pans & Dishes
- Lot of Linens
- Several Boxes of Unseen Misc. Items at Listing

**AUCTIONEER'S NOTE**

This is a very nice Auction, The Ellingsen's have lived in the community for many years. The Tractor, Auto's & Equipment have been shedded and taken care of. Lots of nice items in this Auction.

**OWNERS: ESTATE OF DEAN & CAROL ELLINGSEN**

TERMS: Everything sells as is, where is. Nothing is to be removed until settled for. Payment of Cash, Check with Proper ID, or Credit Cards. Auction Company or the Owners will not be responsible for loss of items or accidents. Statements made the Day of the Auction take Precedence over Printed Matter.

SALE CONDUCTED BY **BRUCE & Le'AN AUCTION & APPRAISAL, LLC**  
 THE AUCTION COMPANY THAT APPRECIATES YOUR BUSINESS

For more information and pictures go to our website at [www.bruceandleanauction.com](http://www.bruceandleanauction.com)

RONNIE BRUCE - Fair Play, MO  
 417-777-1685 or 417-654-2214  
[colronbruce@gmail.com](mailto:colronbruce@gmail.com)

BRANDON BRUCE  
 Fair Play, MO

BILLY BRUCE - Stockton, MO  
 417-399-4800  
[colbbruce@gmail.com](mailto:colbbruce@gmail.com)



# Public Auction

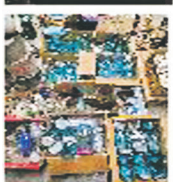
## Saturday, February 4th at 10:00 a.m.

Directions: From West Plains, East Hwy 160 to North Hwy 17.  
 North on Hwy 17 to W Hwy. Right on W Hwy to County Road 3250 in Peace Valley,  
 right on CR 3250 to Bosserman Community Center  
 (Old Peace Valley School) Watch for **Reid Auction** signs

### Antiques & Collectibles



Perfection Feed Sign from West Plains Pease Moore Mill, Sessions Regulator Store Clock w/Key, #15 Red Wing Crock, Cast Iron Kettles, Cornbread Pans & Water Pump, Flat Iron, Small Cast Iron Stove, Iron Bed, #2 School Bell, Iron Implement Seats, Blue Mason Jars of all sizes, Long Life Harness Oil Can, Old Judge Coffee Jar, Sunshine Coffee Jars, Old 1 Gallon Glass Water Bottle, Marble Paper Towel Holder, Breyer Horse Figurines, Sears Camping Heater, Wall Pocket, Coffee Grinder, Milk Can, Franklin Treadle Sewing Machine, Vintage Sewing Items, Oil Lamps, Wooden Butter Molds, Several Chickens on Nests, Glass Powder Boxes w/Swan, Purple Dish Pieces, Blue Hobnail Pieces, Crock Bowls, Brown Covered Dish, Refrigerator Dishes, Glass Juicer, Vintage Plastic Cow Creamer, McDonald's Glasses, Glass Horse & Wagon, Pink Dishes, Chicken Figurines, Small Wooden Wagon, Blue Thermos Water Jug, Milk Jars, Vintage Doll, Old Picnic Baskets, Steamer Wardrobe Trunk, Vintage Schwinn Exercise Bike, Mobile Oil Can, Antique Chainsaw, Collectible Coleman Propane Tank, Old Lamps, Box of Old Medicine Bottles, Primitive Chicken Crate, Wood Stove Parts, Old Paper Cutter, Old Scales, Winchester Flashlight, Primitive Tables, Arkansas 1994 Championship Ring, Metal Cake Carrier/Pan, Noritake China, Minnow Bucket, Live Trap, Nice Coleman Lantern, Large Shell Casings, Martin House, Pyrex....and much more unlisted.



### Furniture

Amana Washer & Dryer, Frigidaire Refrigerator, Small Emerson Refrigerator, Hot Point Electric Range w/Self Cleaning Oven, RCA Flat Screen TV, Sofa, Loveseat, Dresser, Hall Tables, Microwave, Small Wooden Rocker, 4 Black Dining Chairs, Guitars, Banjo, Sewing Machine, Oak Quilt Rack, Dishes, Small Curio Cabinet, Storage Cabinet w/Doors & Shelves, End Tables, Baking Dishes, Cook Books, DVD's, Metal Sewing Machine Base Table w/Drawers.

### Gun Safe~Tools~Misc

Fort Knox Gun Safe, Smith & Wesson Pellet Pistol, Target BR 6mm Gun Barrel-Stainless-6BR100S, 2 12 Gauge Gun Barrels (2 3/4 x30 & 2 3/4 x 26), Gun Boot Bracket, Husky 26 Gallon Air Compressor, Air Tank, New Car Batteries, New Metal Gas Cans, Bench Grinder w/Flex Shaft, Campbell Hausfeld Air Hammer, 4 Inch Low Profile Vise, Cobalt Drill Bit Set, 4 1/2 Quad Dual Saw, Montgomery Ward 6 Inch Grinder, Tap & Die Set, Tool Boxes, Misc Sockets, End Wrenches, Misc Tools, Electric Drill Bit Sharpener, Duct Booster, DC Power Supply, Solar Power Inverter, Battery Charger, Auto Dark Welding Helmet, 2 Mechanic Stools, Wood Planter Boxes, 2 New Full Cattle Mineral Tubs



# Reid Auction Service

**Ted Reid**  
417-256-6661

**Rex Reid**  
417-372-1866  
Ark. Lisc. #2606

**Randy Reid**  
417-257-3911

**Cash or Checks only....NO Credit Cards**

Concessions & Restroom Available

Any announcements made day of auction supersede any or all prior oral or written communications

Not responsible for Accidents, Lost, Stolen or Misplaced items

Check us out on Auctionzip for more pictures and upcoming auctions



# ST. CLAIR COUNTY REAL ESTATE AUCTION

## THURSDAY, FEBRUARY 9, 2023 AT 10 AM

**AUCTION LOCATION: LOWRY CITY CIVIC CENTER,  
406 W. 4TH ST., LOWRY CITY, MO 64763**

**DIRECTIONS TO PROPERTY:** From Hwy 13 north of Lowry City, MO take Hwy A approximately 7 miles to the community of Ohio Missouri where the property on the north and south side of Hwy A.

**185+/- ACRES OFFERED IN TWO TRACTS IN T39N, R27W,  
SEC. 14 IN ST. CLAIR COUNTY, MO. THESE TWO TRACTS  
ARE HIGHLY TILLABLE PRODUCTIVE GROUND  
AND HAVE A VERY LITTLE ROLL TO THE PROPERTY**

**TRACT 1: 152 +/- ACRES WITH  
141.05 TILLABLE ACRES.  
TRACT 1 LIES NORTH OR  
ROUTE A AND WEST OF ROUTE  
F.**

**TRACT 2: 33 +/- ACRES WITH  
34.83 TILLABLE ACRES. TRACT  
2 LIES ON THE SOUTH SIDE OF  
ROUTE A AND THE EAST SIDE  
OF ROUTE F.**



**SELLER: JAMES DURWARD  
& JOAN M. WISHARD TRUST  
TREVOR GARTNER TRUSTEE**

**Wheeler**   
**AUCTIONS & REAL ESTATE**

23101 HWY. 24, PARIS, MO 65275 | 660-327-5890  
WWW.WHEELERAUCTIONS.COM

BRETT SAYRE | 573-881-1876  
WHEELER AUCTIONS | 660-327-5890  
WWW.WHEELERAUCTIONS.COM



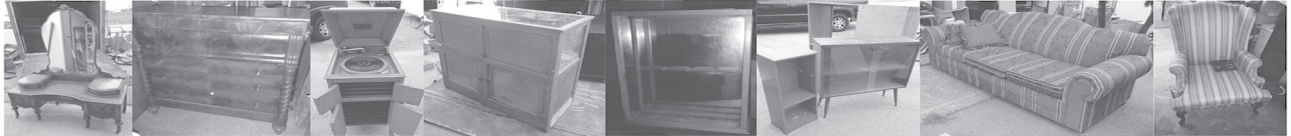


# ESTATE AUCTION

**Saturday, February 4th, 2023 ~ 10:00 AM**

LOCATION: American Legion Building, 710 Locust, Lockwood, MO (Watch For Signs)

**Auction For Hollis D. & Mary Landers Estate**



**Antique & Modern Furniture**

Ant Ornate Vanity Dresser, Ant Walnut 5 Drawer Chest Of Drawers W/2 Secret Drawers, Ant RCA Victrola, Ant Store Cigar Store Counter, Ant Oak Countertop Store Display Cabinet, Ant Oak High Back Bed Headboard, Ant Oak Wall Phone, Ant English Lawyers Type Bookshelf, Ant Oak Office Chair, Ant Oak Treadle Sewing Machine, 2 Ant Cuckoo Clocks, Ant Jenny Lind Washstand, Several Ant Kitchen Chairs Different Styles, Ant Trunks, Ant Fold Up Table & Fold Up Chairs, Ant Wood Cradle, Ant Baby Bed, Prim Wood Desk, Retro Organ Stool, Retro 70's Style Glass Front Shelf W/Legs, Ant 50's Chrome Table, Set Of 4 Ant 60's Chrome Kitchen Chairs, Wood & Other Chandeliers, Prim White Wicker Bed Headboards, Ant & Prim Ornate Lamps, 2 Retro Prim Chest Of Drawers, Ant Singer Sewing Machine, Oak & Glass Top Sofa Table, Nice Couch, Queen Back & Leg Setting Chair, Oak Entertainment Center, Bookshelves, Round Table, Handicap Supplies, Other Items Not Listed

**Antiques, Collectibles & Households**

Ant 1800's Grain Cradle In Excellent Condition, Ant 4 Prong Hay Loft Fork, Several Ant Metal Toys Inc Cars, Trucks & Others, Lg Lot Of Other Ant Toys Inc Pull, Noise Makers, & Others, Old Howdy Dooty Ventriloquist Doll, Ant Mary Lou-Gund Pin Back Doll, Lots Of Old In Original Package Hot Wheels, 4 Bikes Inc First Made Rare Fold Up Bike & A Schwinn Banana Seat, Ant Metal Bicycle Dual Basket, Ant Army Gun Crate,

Ant Army Field Gurney, Ant Metal Tiger Tobacco Carry Tin, Ant F.B. Wicker & Leather Lg Tobacco Leaf Box, Ant Lg Wood Feed Box, Several Old Wood Adv Boxes, Ant Straight Razors & Boxes, Several Ant Collectible Jars, Old Wood Nail Kegs, Ant Lionel Spear-tone Childs Record Player, Toy Train Set, Ant Spear-tone Table Top Stereo, Ant Bank Or Store Adding Machine, Ant Store Cash Register, Ant Kids Toy Metal Cook Stove, Ant Paper Mache Pcs, Ant Bubble Gum Machine, 4 Ant BB Guns 2 Are Daisy's, Ant Parking Meter, Old Marbles, Old Brass Animal & Bird Pcs, Ant Copper Boiler, Old Cream Cans, Ant Cast Spittoon, Ant Metal Coleman Cooler & Ant Coleman Drinking Jug, Old Metal Store Rack, Rare Guitar Once Owned By Jim Owen Famous Entertainer & Song Writer, Elvis Cutout, Sentry Medium Size Box Type Combination Safe, Neat Hanging Globe Light, Bingo Or Raffle Spin Cage On Stand, Ant Silver Set In Box, Ant Silver Pcs, Old Costume Jewelry, Ant Insulators, There Will Be Lg Lot Of Old Ant Glassware Of Various Kinds, Will Be Lg Lot Of Sm Ant & Prim Show Box Items, Sm Kitchen Appliances, Pots, Pans & Dishes, Other Housewares

**This Is Only A Partial Listing As There Is Another Storage Building Filled With Small Antiques, Primitives & Households That We Were Unable To Go Look At & List That Will Be There Sale Day. Sure To Be Great Surprises Sale Day!!!**



**Auctioneers Note:** It Is An Honor To Be Conducting This Auction For The Landers Estate From Springfield, MO. This Is The First Of Two Auctions We Will Conduct For This Family. Only A Partial Listing As There Will Be More Antiques, Primitives & Household Items Added Sale Day. Excellent Antique & Modern Furniture & Some Unique Antiques & Primitives Already Listed. Please Plan Now To Attend. **Sale Order: Antique & Modern Furniture Will Sell First Then Antiques, Primitives, Collectibles & Households. See Ya There!!!** Terms: Cash or check with proper ID. Now accepting most major credit cards. Nothing removed until settled for. Statements made the day of sale takes precedence over printed material. Everything sold as is where is. Not responsible for accidents. Restroom available. Concessions Provided. Check our website for upcoming auctions and for additional pictures!!



## NANCE AUCTION SERVICE



No Matter How BIG or small, We Do Them All!!!

Col. Bill Nance 417-214-0093 In God We Trust Philippians 4:13 Sean Beazley 417-247-6754



# R&R AUCTION SERVICE

## FRIDAY FEB 3RD @ 6PM

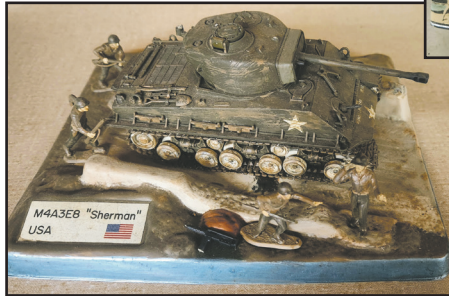
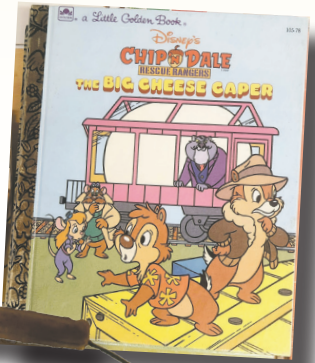
### in the R&R Auction House, 1644 South Ash, Buffalo, MO



Getting back into the swing of things for 2023. Our 1st auction this year is a combination of merchandise that is sure to please. From Arrow heads to Zippo's and everything in between!

The list includes but not limited to; old lighters, pocket knives, bottle openers, Rochester Quadrajet carburetor, James Patterson hardback books, lots of children's books, computer monitors, printers, keyboard, filing trays and other office supplies, Coca Cola bucket, Sherman tank model with soldiers, neon Open and Payday loan signs, programmable LED sign, Mitchell acoustic guitar, clocks, porcelain dolls, metal shelves, fans, office furniture, jewelry, large jewelry cabinet, couch, coffee table, lamps, vacuums, bag chairs, ladders, various tools including Greenworks 40 volt cordless chainsaw and limb saw, hand crank meat grinder, hand crank ice cream freezer, several toys, spittoon, shadow box, wall décor, pictures, metal tacklebox, small showcase items, metal folding chairs, chainsaw, weed eater, leaf blower, and much more being added daily. Check out our website for added pics.

We will see you on the 3rd!



Please keep watch on our website for added photos.

TERMS: 10% Buyers premium. Cash, check, or credit card with proper I.D. nothing removed until settled for A 3% fee will be added to credit card purchases. Not responsible for errors in listing.



For more information contact Professional Auctioneer Russ Weeks at 417-576-7357 or check out [www.rrauctionservice.com](http://www.rrauctionservice.com)

Serving this area's auction needs since 1997 with honesty and professionalism.  
[www.rrauctionservice.com](http://www.rrauctionservice.com)  
(417) 576-7357 or (417) 345-4140





# PUBLIC AUCTION

**SATURDAY, FEB. 4 @ 9:00 A.M.**

**Directions: SALEM, MO - 300 E. Franklin, at Coopers Auction, behind Phil-Mart. (indoor auction)**

**SELLING THE FOLLOWING DUE TO SALE OF HOME**

**HOUSEHOLD ITEMS • OLD TOYS • GUNS • KNIVES • TOOLS**

**KNIVES - POCKET & HUNTING:**

Frost: Several Case XX, Bench Stone, Bench Mark, Hell, Kissing Crane, Queen Steel, Bone Handler, Old Timer, Frost Missouri Knife, Bulldog, Parker Brothers, Buck, Farms 3045, Bokker, Old 33 & 45

**OTHER ITEMS:**

Bicycles - Yard Wagon  
 Bench Bleacher - Axe - Push Plow  
 2, 9'x5' Trailers (One w/Title)  
 Electric Composter - Milk Can  
 Yard Waste Wagon - Table Saw  
 2-Nice Push Mowers  
 Folding Saw Horse  
 Target & Braud Heads - 30-06 Shells  
 Springer 187R, 22 Auto  
 Tedd Williams Model 3T 22  
 Remington Model 34 22  
 Glenfield Model 60  
 Ranger Model 30 12 Ga.  
 Model 733 32 S&W  
 Derringer Cal. 30 Sp  
 US Revolver Co.  
 Davis Industries Chino CA USA  
 Model D22 Storm Ruger 40 Auto

**Holsters:**

1867 Nebraska Centennial 1967  
 Colt's PT FA Mfg. Hartford CT  
 \*Colt Single Action Frontier  
 Scout 22  
 410 Shells - Daisy BB Gun  
 2 Big Charbroil Gas Grills  
 Nice Mini Fridge  
 Matching Double-Rocker & Rocker  
 2-Heavy Rocking Chairs  
 Several Good (Folding Leg) Plastic  
 Tables  
 Pictures - Canes - Magazine Rack  
 Kids Toys - Baby Gate - Patio Table  
 Fish Cooker - Liberty 24-Gun Safe  
 TVs - Gumball Machines  
 Massage Mat - Lots of Fishing Lures  
 Rods & Reels - Jig Saw - Gas Cans  
 Horseshoe Set  
 14" Chop Saw & Stand  
 Hard Gun Case - Shoe Shine Kit  
 Humidifier - Wire Dog Crate  
 Lots Canning Jars - Drill Bits  
 Shovels - Heat Lamps  
 Electric Leafblower  
 Porter Cable 150 PSI Air Tank  
 DeWalt Sawzall - Table & 6 Chairs  
 Several Nice "Old" Tin Toys

Wall Decor - Shop Broom  
 Folding Lawn Chairs - Coolers  
 Bib Overalls - Cricket Bucket  
 Metal Boxes - Wooden Crates  
 20 Lb. & 30 Lb. Propane Bottles  
 Chimney Brush - Plant Stand  
 Highchair - Bench Vise - C-Clamps  
 2" Balls - Dremmel Tool  
 Vise Grips - Welding Rods  
 Battery Powered Extensions  
 Welding Helmets - Sockets  
 Ratchets - Angle Magnets  
 Metal Shelf - Yard Carts  
 Anti-Freeze & Oil - Battery Chargers  
 12 Gal. Shop Vac - Air Co. Welder  
 Big, Roll-Around-Tool Chest  
 Refrigerator - Yard Cart  
 Tracker 30 Rolling Motor  
 Curio Cabinet - Cast Iron Bean Pots  
 Pro-Flo Backpack Sprayer  
 Ext. Cords - Pitch Forks  
 Lots of Metal Folding Chairs  
 Car Ramps - Lawn Sprinklers  
 9' Bass Tracker Plastic Boat  
 Stock Tank - Plumbing Supplies  
 Shop Smith - Work Bench  
 Edger & Clamp - Grease Guns  
 Live Trap - Tables - End Tables  
 Wire & Metal Shelves  
 6' Fiberglass Step Ladder  
 2 Boat Seats - Weed Wacker  
 7 Gal. Air Tank - Hedge Trimmers  
 Troy Built Weed Eater - Loppers  
 Craftsman 2550 PSI Pressure  
 Washer  
 Pressure Cooker - Camp Stoves  
 5930 Electric Panel - Mantis Tiller  
 Bucket 2 1/2" Metal Screws  
 Craftsman 10" Band Saw  
 Craftsman 10" Lazer Trac Miter Saw  
 Rakes - Levels - Splitting Hammers  
 Toolbox Topper - Microwaves  
 Nice Heavy Desk - Electric Fire Place  
 Dish Tailgater - Electric Heater  
 King Size Bed - Oak Chest  
 Storage Cabinet - Propane Smoker  
 Matching Couch & Recliner  
 Floor Fan - Tupperware  
 4-Slice Toaster - Small Deep Fryer  
 Electric Chair - Cowboy Hats  
 Hose Reel - Caution Box  
 Yard Swing - Nice Fountains  
 Planters - Hoses - 3-Burner Server  
 Camp Items - Baking Pans  
 14' Alum. Ext. Ladder - Pet Cage  
 Water Hoses - Torch Tanks



**OWNER: ALICE JOHNSON**

**AUCTIONEER'S NOTE:**

**Lots of Neat Items, Old Toys, Guns, Camping & Tools**

**See you there! - Tom!**

**ANNOUNCEMENTS AT AUCTION TAKE PRECEDENCE OVER PRINTED MATTER**

# WULFF AUCTION

TERMS: CASH OR APPROVED CHECK - I.D. REQUIRED  
 NOTHING REMOVED UNTIL SETTLED FOR

LICENSED APPRAISALS

2334 Highway K, Salem, MO 65560  
**AUCTIONEERS:** Col. Tom Wulff • John Wisdom  
 Cell: 573-247-3884 • Cell: 573-247-9563



Clerk: Tracy Strange Home: 573-729-8476 Cashier: Nancy Inman  
**See Wulff Auctions at [www.thesalemnews.com/auctions](http://www.thesalemnews.com/auctions)**

RAIN OR SHINE OWNER & AUCTION PERSONNEL NOT RESPONSIBLE FOR ACCIDENTS AT SALE SITE





# ONLINE AUCTION

**BID NOW! BIDDING CLOSSES FEBRUARY 6<sup>TH</sup>**



**ITEM PREVIEW DAYS:**  
 Bidders will be able to inspect and view items Monday-Friday (8am-4pm) and Saturdays (8am-noon) while the auction is open for bidding at 4177 HWY VV, Berger, MO 63014



**643 LOTS**

**All items sell regardless of price. All items start at only \$1.**

## Construction Equipment & Tractors

- 2016 JCB 535-125 telehandler
- 2018 JCB 535-95 telehandler
- 2017 JCB 535-95 telehandler
- Unused 2017 Kubota M6S-111 tractor
- 2018 Case CX60C excavator
- 2015 Caterpillar 308E2 CR excavator
- 2014 Hyundai 80CR-9 excavator
- 2011 Volvo ECR48C excavator
- John Deere 410C 4x4 backhoe loader
- 2008 Bobcat S185 skid steer loader
- 2 Genie GS-2632 electric scissor lifts
- Genie GS-1930 electric scissor lift
- Genie GS-4390RT rough terrain scissor lift
- 2 Unused AGT Industrial H12 mini excavators
- International 674 gas tractor
- John Deere 3020 diesel tractor
- Case SC tractor
- Case IH 485 tractor w/ loader
- 2007 Mahindra 7520 4x4 tractor
- Sellick 8,000 lb. rough terrain forklift
- John Deere 450 crawler loader
- Massey Ferguson 135 gas tractor
- Kubota L3901 4x4 tractor w/ loader
- 2000 John Deere 790 tractor
- Case 530 diesel tractor

## Trucks, Cars, and Motorhomes

- 2016 Thor Vegas 24.1 motorhome
- 1977 Ford F700 grain truck
- 2006 International school bus
- 1947 Ford Super Deluxe Coupe
- 1985 International S1900 flatbed truck
- 2013 Ford F150 4X4 extended cab tractor
- 2001 International 4900 road tractor
- 2001 Chevrolet Corvette convertible
- 2001 Chevrolet C7500 Kodiak flatbed
- 2001 Ford F250 4x4 extended cab
- 1999 Sterling LT9511 dump truck
- 2006 Chevrolet Silverado 1500 4x4
- 1991 International 4700 dump truck
- 1974 International 1600 grain truck
- 1997 International 4700 grain truck
- 2014 Chevrolet Equinox LT
- 2006 Ford F550 dump truck
- 2003 Ford Expedition
- 2000 Ford F350 flatbed
- 2008 Chevrolet Trailblazer LT
- 2005 Jeep Liberty 4x4
- 2000 Chevrolet 3500 service truck
- 2001 Mercury Mountaineer 4x4
- 1992 Dodge Dakota LE
- 2004 Ford F150 extended cab

## Farm Implements

- Kinze 2000 6-11 row no-till planter
- NH BR7060 round baler
- White 5100 6-row planter
- 3-pt grader blades
- John Deere BL8B 8' snow plow for skid steer
- 3-pt & pull type discs
- JD 7000 4 row planter
- 3-pt & pull type plows
- Antique Aeromotor windmill
- Several flatbed farm wagons
- Gehl WR217 9 wheel hay rake
- Oliver 285 18' field cultivator
- IH manure spreader
- Danuser F-8 3 pt post hole digger w/stand
- JD 918 18' grain head
- 6'x10' gravity box w/ 14" extensions
- Gehl 65 MX grinder mixer
- JD 752 4-basket hay tedder
- 3-pt. & pull type brush hogs
- Danuser MD-H1 3-pt. hydraulic post driver
- 3-pt concrete mixer
- NH 1002 square bale stack wagon
- Articulator 721XR 11' golf course mower
- Chandler tandem axle fertilizer spreader
- 3-pt finish mowers
- Hercules 5' pull type roller
- Pittsburgh 6' 3-pt field cultivator
- Hardi Navigator 550 pull type sprayer
- Fuerst ground drive manure spreader
- Woods 15' batwing brush hog
- Case IH 8725 silage chopper w/ 2 heads
- NH 256 hay rake w/ dolly wheels
- Bison NB80 240 8' 3-pt grader blade
- Kinze 2210 8-16 split row planter
- Walinga 510 Agri-Vac grain vac
- Patz 2400 horizontal feed mixer
- Hesston 1085 9' haybine
- NI ground drive manure spreader
- Water wagon w/ 1,300 gallon poly tank
- NH 853 chain round baler
- Krause 2500 7' 3-pt chisel plow
- Oliver 7' grain drill
- Trailer creep feeders
- Remlinger 3-pt or skid steer bale slicer
- NH 1411 10' discbine
- JD 220 20' grain head
- NH 352 grinder mixer
- 26' folding pasture harrow
- JD 1326 7'2" discbine
- JD 535 round baler
- JD 1710 12' disc chisel
- JD 158 loader w/ accessories
- Bush Hog 2615 15' brush hog
- Phoenix 16' 3-pt rotary harrow
- Kuhn GMD 800-GII HD 10' 3-pt disc mower
- Case IH 5400 13' grain drill on Yetter no-till cart
- Finn MSW-24 straw blower
- John Deere 3-3pt 2-row corn planter
- Heider model R 10' auger wagon
- IH 2-pt Fast Hitch disc plow
- IH 2-pt Fast Hitch 6' disc
- JD 9-shank V-ripper
- Case IH 4800 24' field cultivator
- JD 630B 8.5' pick-up head for chopper
- Fimco ground drive manure spreader
- Arps 728 3-pt backhoe
- NH 355 grinder mixer
- Lely 500 gal. boomless sprayer
- 3-pt vegetable planter

- Unused storage containers 7'-40'
- Unused skid steer attachments
- Unused portable restrooms
- Unused workbench tool boxes
- Unused hoop buildings
- 2- Unused Firestone 20.8-38 tractor tires

## Trailers & Camper

- 2012 Sabre 281RLDS 5<sup>th</sup> wheel camper
- 2021 Starlite 25' gooseneck flatbed trailer
- Viking 31' flatbed semi trailer
- Haulette 20'6" flatbed trailer
- Cronkite 15' flatbed trailer
- Trail King 14' flatbed trailer
- 2 16' flatbed trailers
- Homemade 3' by 6' utility trailer
- Hale 6'x20' gooseneck stock trailer
- Homemade 12.5' stock rack trailer
- Rice 24' tilt bed trailer
- 2022 Master Tow car dolly
- Sooner 24' double deck stock trailer
- J&B 18' flatbed trailer

## ATVs & Lawnmowers

- 2004 Kawasaki Bayou 250 ATV
- JD 455 diesel riding mower
- Homemade tractor w/ JD LUC engine
- 2011 Polaris Sportsman 500 HO ATV
- 2009 Kubota BX1860 compact tractor
- 2002 Honda TRK250TM ATV
- 2006 Honda TRX350FM 4x4 ATV

## Shop Equipment, Tools, and Misc.


- Unused Milwaukee tools
- Lincoln AC225 stick welder
- Ridgid 300 pipe cutter with accessories
- Unused Agrotk ATK-TC24 tire changer
- Craftsman 12" bandsaw on stand
- Large air powered sausage stuffer
- Butcher Boy model B12 industrial meat saw
- Ridgid 535 industrial pipe threader
- Group of rough sawn ash lumber
- MBA Crystal Blast 3624 sand blasting cabinet
- Stihl & other chainsaws
- David White mod. 8202 transit w/ accessories
- TeeJet Matrix 430 ag GPS system
- Warn 12,000 lb. electric winch w/ air compressor
- Stihl FS55RC gas trimmer
- Stihl FS90 gas string trimmer
- Craftsman oscillating spindle sander
- Lincoln Weldanpower 225 G7 welder generator
- Craftsman 25-gal 6 hp air compressor
- Fortress Brand Ultra-Quiet Series Air Compressor
- Delta 7" bench grinder on cast iron base
- Pallets of oak & ash firewood
- Steel & concrete cattle guards
- 25- 12' steel corral panels

More items listed at [SchneiderAuctioneers.com](http://SchneiderAuctioneers.com)

# SCHNEIDER Auctioneers LLC

573-834-2207 • 573-291-8075  
[www.SchneiderAuctioneers.com](http://www.SchneiderAuctioneers.com)



**BUFFALO LIVESTOCK MARKET LLC**   
 276 Hwy 32 W., Buffalo, MO  
**January 28<sup>th</sup>, 2023**  
 Receipts: 550 Light Test Due to Weather

**REPRESENTATIVE STEERS**  
 300-400 @ 210.00 to 254.00  
 400-500 @ 205.00 to 237.00  
 500-600 @ 180.00 to 215.00  
 600-700 @ 170.00 to 180.00  
 700-800 @ 165.00 to 172.00  
 800-900 @ 155.00 to 167.00

**REPRESENTATIVE HEIFERS**  
 300-400 @ 170.00 to 205.00  
 400-500 @ 167.00 to 198.00  
 500-600 @ 155.00 to 174.00  
 600-700 @ 150.00 to 167.00  
 700-800 @ 140.00 to 154.00  
 800-900 @ 130.00 to 140.00

**FEEDER BULLS**  
 300-400 @ 170.00 to 220.00  
 400-500 @ 165.00 to 190.00  
 500-600 @ 160.00 to 188.00  
 600-700 @ 150.00 to 167.00  
 700-800 @ 145.00 to 160.00  
 800-900 @ 128.00 to 135.00

**STOCKS COWS**  
 Bred Cows 900.00 to 1375.00  
 Cow/Calf Pairs N/T

**SLAUGHTER BULLS**  
 High Yield 105.00 to 117.00  
 Low Yield 85.00 to 97.00

**SLAUGHTER COWS**  
 Fleshy 80.00 to 92.00  
 Med Flesh 77.00 to 97.00 TOP  
 Thin Flesh 68.00 to 78.00

**QUESTIONABLE HEALTH OR CRIPPLE COWS**  
 50 Down

**PRE-VAC FEB. 11TH**  
 Don't want to miss this one!!!

**MON-WED MARKET REPORT**  
 Listen to KJEL 103.7FM • Lebanon or KY00 99FM • Bolivar

**VIEW OUR SALES AT CATTLEUSA.COM**

**CALL FOR TRUCKING OR ON-FARM VISIT**

Lyle Caselman • Owner-Manager  
 417-345-7876 • mobile 417-533-2944  
 Leon Caselman • Owner  
 417-345-4514 • mobile • 417-588-6185

**Carpenter needed for Overman Buildings in Rogersville Missouri to build portable buildings in climate-controlled environment \$20/hour. Must be able to read blueprints, schematics and decipher a cut list. Must have prior experience framing, squaring, and leveling a building. This is a full-time job with benefits. Please send resume to [jgardner@overmanbuildings.com](mailto:jgardner@overmanbuildings.com)**

**8FT PICKUP BED:** Red, tailgate, lights, bumper & hitch. \$900. 417-321-1928. Osceola.

**CHEVROLET 1993 1500 SILVERADO PICKUP:** Long bed, 350VB Automatic. 73,000 Garage kept, rust free miles. \$14, 500. 417-848-8754. Springfield.

**TINY HOMES:** We gottem 573-881-3283

**KILMER FARM EQUIPMENT Consignment Auction**  
**SATURDAY, MARCH 4, 2023 • 9:30 AM**  
**AUCTION LOCATION: 14769 Cattle Lane, Versailles, MO 65084**  
Directions: At the Intersection of Hwy 5 and Hwy 52 in Versailles, go North on Hwy 5 for 1 mile to Cattle Ln then turn Right or East and go ¾ mile to Sale Site.

**Ad Deadline: Tuesday, Feb. 7, 2023**  
**CONTACT DANIEL OR MARK KILMER TO CONSIGN OR FOR MORE INFORMATION (573) 378-6615**  
**ACCEPTING CONSIGNMENTS ON LOT 2/18 - 3/1**

**Wheeler AUCTIONS & REAL ESTATE**   
 23101 HWY. 24, PARIS, MO 65275 | 660-227-5890  
 WWW.WHEELERAUCTIONS.COM

**KILMER FARM EQUIPMENT, LLC**  
 14270 Hwy. 52, Versailles, MO 65084  
**(573) 378-6615**

For more info and photos: [www.wheelerauctions.com](http://www.wheelerauctions.com)

**BID LIVE** Live Online Bidding Powered By **proxibid** **BID NOW** Online Bidding Provided By **Equipmentfacts**

**CASE TRACTOR 1936 RC:** Restored, museum worthy. Parade, show. Only \$3,500. 417-848-8754. Springfield.

**LIGHTLY EXPERIENCED GOLF BALLS:** \$3 a dozen. 417-818-3469. Strafford.

**STRAW FOR SALE: \$4 per bale. 21 bales to a bundle. 573-539-2060. Versailles.**

**SLIGHTLY USED PUZZLES:** Will sell or trade. 417-818-3469. Strafford.

**Allen Auction & REAL ESTATE SERVICE LLC**  
 www.allenauction.net

**ANNUAL SPRING CONSIGNMENT AUCTION**  
**SATURDAY, FEBRUARY 25, 2023 @ 9:00 AM**  
**Allen Auction Sale's Lot 490 S. Hwy 47, Hawk Point, MO, 63349**  
Directions: Allen Auction Sale's Lot. From Hawk Point, MO, Take Hwy 47 South 2.5 miles, Auction on Left Side. Watch for Signs Day of Auction.

**We will be accepting:**  
**COMBINES & HEADS • TRACTORS • FARM EQUIPMENT • SKID LOADER EQUIPMENT • VEHICLES • CONSTRUCTION • HAY EQUIPMENT • TRAILERS & WAGONS • LIVESTOCK EQUIPMENT & SUPPLIES • RECREATION • LAWN & GARDEN • SHOP EQUIPMENT & TOOLS • MISCELLANEOUS**

**Special Note: We will ONLY be accepting GOOD QUALITY tractor & equipment tires! ABSOLUTELY NO VEHICLE TIRES!**  
**GO TO WEBSITE FOR FULL LIST, UPDATES AND PHOTOS**

**Auctioneers Note:** We will be running 3 auction rings. Please come prepared with extra bidders. Any questions on any of the equipment, feel free to give us a call at the office. Thanks Nick and Kyle.

**ALLEN AUCTION & REAL ESTATE SERVICE LLC**  
 (636) 338-4805 • Hawk Point, MO • [www.allenauction.net](http://www.allenauction.net)

The Auctioneers:  
 Nick Allen: (636) 358-2900 • Kyle Allen: (636) 236-2344  
 Elden Foster: (573) 239-6745  
 Email: [office@allenauction.net](mailto:office@allenauction.net)

**REGISTERED HERFORD & ANGUS BULLS:** Home raised, Some Show-Me Select Qualified. 573-701-7828. Belgrade.

**1500 VINTAGE WRISTWATCH DIALS:** \$100. 573-764-3517. Call in PM.

**PROPANE WALL HEATER:** 15,000 BTU. \$100. 417-321-1928. Osceola.

**USED MOBILE HOMES:** Call David at VILLA HOMES IN ROLLA 573-578-8072. Rolla.



**Gun Show**  
**Sat. February 4th • 9am-5pm**  
**Sun. February 5th • 9am-3pm**  
 The Red Shed Event Center  
 Exit 179 Doolittle, MO

Come to the Gun Show!  
 Buy • Sell • Trade

**Admission \$5.00** Cash or Check (10 and under free).

**For More information call 573-341-5450 or 573-465-0642**

**LOG SIDING:** 2X8 Pine/Western Cedar  
[www.pineridgerustic.com](http://www.pineridgerustic.com) 573-729-7226.  
 Salem.

**FOR SALE:** AKC German Shepherd puppies, 12 weeks old, 2 males, UTD on shots and wormer. \$375. 417-926-3187. Mountain Grove.

**HIKING THE OZARKS BOOK: A Guide to the Area's Greatest Hiking Adventures.** \$6.75. 417-532-2045. Lebanon. (Leave message and phone number).

**WEATHERED BARN WOOD SIDING:** 10" wide. 573-729-7226. [www.pineridgerustic.com](http://www.pineridgerustic.com) Salem.

**2005 PT CRUISER:** Needs timing belt. \$500. 417-859-4401. Marshfield.

**BUYING MOBILE HOMES:** Call David at VILLA HOMES IN ROLLA 573-578-8072. Rolla.

**NEW MOBILE HOME STOCK:** Just received (5) new units, they gotta go! 573-657-2176. [amegamobliehomes.com](http://amegamobliehomes.com)

**WANTING TO BUY:** Savage Rifle Model 10ML. 636-239-2695. Washington.

**USED DOUBLE-WIDE:** \$34,900  
 WOW!!!!!! This won't last! 573-657-2176.  
[amegamobliehomes.com](http://amegamobliehomes.com)



**MID MISSOURI STOCKYARDS**

**REGULAR SALE EVERY THURSDAY 11 AM**

**SPECIAL COW SALE • FEBRUARY 4TH AT 6 PM**

WATCH OUR WEEKLY SALE IN REAL TIME ON [DVAUCTION.COM](http://DVAUCTION.COM)

For Farm Visits, Market Updates, or Trucking  
 Call **Zach Cox 417-777-1320**  
**Dan Romine 573-578-4939**

**Competitive Buyers!  
 Competitive Commission!  
 Competitive Market!**

Barn: 417-532-9292   
**I-44 • Exit 123 "just outside of Lebanon"**  
**17505 Route 66, Phillipsburg, MO 65722**  
 For weekly market updates, visit us at  
[www.midmostockyards.com](http://www.midmostockyards.com)

**WE HAVE MOBILE HOMES:**

Instock new arrivals (8) homes, need to go as soon as possible! 573-499-9993. [columbiadiscountnhomes.com](http://columbiadiscountnhomes.com)

**TRUE MODULARS:** 30 to 60 day delivery available, 3 and 4 bedroom 573-657-7040 [chateauhomes.net](http://chateauhomes.net)

**I BUY.....used mobile homes.** Call or text 573-338-6250 or email [GregS.CDH@outlook.com](mailto:GregS.CDH@outlook.com)

**FIREARMS:** Professional Repair, Restorations and Appraisals. Baron's Gunsmithing. 573-363-5801. Camdenton.

**DARDEN PROFESSIONAL TIMBER HARVESTING, BUYING STANDING BURIED BY TABLE ROCK LAKE BOOK:** About old towns, cemeteries, stores, etc. that were covered by the lake, 188 pages, \$12.00. 417-532-2045. Lebanon. (Leave message and phone number).

**MODEL 1911 FRAME 8-SHOT C02 PISTOL:** Like new, in box with C02 cartridges, 4 clips, pellets & all paperwork. \$95. 573-364-7465. Rolla.

**TIMBER:** Great prices, improve wildlife habitat and improve forest health. State Certified & Fully Insured! 573-247-4808. Salem.

**LIONEL TRAIN SET:** Steam engine, tender, caboose and other car, track, and transformer. \$195. 573-364-7465. Rolla.

**RUBBER & LEATHER BOOTS AND 5-Buckle OVER SHOES:** Men's 11, Women's 7, some insulated. \$15-\$40 obo. 636-239-2695 or 314-560-5700. Washington.

# Earl's Hay Auction

**Sat. February 4, 2023 • 9:00 AM**

**Location:** 18627 Kelsay Rd • Barnett, MO 65011

Approx. 1000 Round Bales Of Hay Of All Types. Nice Lot Of Small Square Bale Hay. Some Big Square Bales.

We Have Straw & Corn Feeder Round & Square Bales.

**For All Your Hay Needs Come To This Auction.**

**Auction Lasts Approx. 1 Hour.**

**You Will Have 1 Week To Haul Out. Loaders Available.**

**Last Sale Sold 1173 Round Bales Top \$125.00 - Bottom \$55.00**

**Next Auction Will Be March 4th, 2023**

**For More Information Call**

**Earl Zimmerman 573-378-4335 • Wilmer Hoover 573-789-2215**





**YOUR AD GOES HERE!**

**Add YELLOW Color For An Additional \$3 Per Reader Ad**

*All ads will include Phone Number (unless requested to be deleted by advertiser) and City Or Town, Phone Number with Area Code counts as one word. City or Town counts as one word.*

**RATE: 80¢ Per Word. All Classified Ads Require Payment Before Print.**

(1)	80¢	(2)	\$1.60	(3)	\$2.40	(4)	\$3.20
(5)	\$4.00	(6)	\$4.80	(7)	\$5.60	(8)	\$6.40
(9)	\$7.20	(10)	\$8.00	(11)	\$8.80	(12)	\$9.60
(13)	\$10.40	(14)	\$11.20	(15)	\$12.00	(16)	\$12.80
(17)	\$13.60	(18)	\$14.40	(19)	\$15.20	(20)	\$16.00
(21)	\$16.80	(22)	\$17.60	(23)	\$18.40	(24)	\$19.20
(25)	\$20.00	(26)	\$20.80	(27)	\$21.60	(28)	\$22.40
(29)	\$23.20	(30)	\$24.00	(31)	\$24.80	(32)	\$25.60
(33)	\$26.40	(34)	\$27.20	(35)	\$28.00	(36)	\$28.80
(37)	\$29.60	(38)	\$30.40	(39)	\$31.20	(40)	\$32.00

**Buy 3 Weeks - Get 4th Week Free! (Must be same ad)**

**Place your Classified Ad TODAY!**

**417-532-9131 • 800-665-8875**

**Fax: 417-532-8140**

**Or Mail To: P.O. Box 192 • Lebanon, MO 65536**

For your convenience we accept MasterCard, Visa, Discover or American Express



**DEADLINE FOR CLASSIFIED ADS: FRIDAY 4:00PM!**

Name \_\_\_\_\_

Address \_\_\_\_\_

City \_\_\_\_\_ Email \_\_\_\_\_

State \_\_\_\_\_ Zip Code \_\_\_\_\_ Phone \_\_\_\_\_

**Ad Total \$ \_\_\_\_\_ X # Weeks \_\_\_\_\_ = Amount Enclosed \$ \_\_\_\_\_**



**Multiple Building Sites**  
**Electricity is already present throughout property.**  
**Laclede County - Lebanon R3 School District**



The bottom of the property is just steps from the public Niangua River access. You can spend hours fishing, let the kids play or just enjoy the serenity of the Ozark's habitat. This is a great opportunity to start your own Bed and Breakfast for avid fishermen who are ready to start their day bright and early, catching their limit trout. Build your escape. This is your dream property!



Call to schedule your tour today

**Magda Reagan**

417-718-5505  
 magdareagan@yahoo.com



266 S. Jefferson Ave.  
 Lebanon, MO 65536  
 Office: 417-588-1200



**1970s KIDS METAL STOVE & FRIDGE:** Nice Lithographic paint, 18" wide x 36" high. \$75. 573-364-7465. Rolla.

**1890 GOLD TESTING KIT:** Glass acid beakers + antique wooden case. \$100. 573-764-3517. Call in PM.

**110 PORCELAIN POCKET WATCH DIALS:** Perfect for arts & crafts. \$100. 573-764-3517. Call in PM.

**OMAR'S DOZING**

- ➔ Clear land
- ➔ Clean up woods
- ➔ Make driveways
- ➔ Clear property lines
- ➔ Build ponds

*Amish Owned & Operated*

**LEAVE MESSAGE: 417-741-0440**  
Hartville & Surrounding Areas

**FIXED KNOT FENCE**

- Deli Sandwiches
- Homemade Yogurt
- Homemade Bread
- Glass Bottle Milk
- Cheese & Spices
- Bulk Foods
- Hydraulic Hoses
- Electric Fence Supplies
- Stay-Tuff Fence
- Johnson & Ritchie Waterers
- Gates & Panels

**VISIT YOUR ONE STOP SHOP**  
**FARMERS QUIK STOP**  
5 mi. East of Lebanon on Hwy 32 • 417-991-1938

**KUSTER LOGGING**

**BUYER of Standing Timber**  
**Oak and Walnut**

**Dozing Now Available**

**417-259-0047**

**References Available**



**3 GENTS WITTNAUER WRIST WATCHES:** 10k gold + 23J. All \$200. 573-764-3517. Call in P.M.

**HARLEY FAT BOBS:** Custom flame paint w/ gas caps + lines. \$100. 573-764-3517. Call in P.M.

**S&E CUSTOM LUMBER:** 417-322-0898. Grovespring.

**HARLEY 45 SOLO:** factory rear brake drum + sprocket. \$150. 573-764-3517. Call in PM.

**THE CIVIL WAR ILLUSTRATED HISTORY BOOK: 425 pages, \$12.50. MEMORIES OF AN OZARKS PIONEER & CIVIL WAR Soldier James Frances Coatney, Private Arkansas Union Calvary, Company D, \$6.50. 417-532-2045. Lebanon. (Leave message and phone number).**

**EARN \$60,000/YEAR PART-TIME:** In the livestock or farm equipment appraisal business. Agricultural background required. Home study course available. 800-488-7570 or www.amagapraisers.com

**HARLEY PANHEAD DISTRIBUTOR:** original, chrome + complete. \$125. 573-764-3517. Call in PM.

**MISSOURI OZARKS BOOKS:** Walkin' Preacher of the Ozarks Guy Howard, \$12.50. Fishes of Missouri \$6.50. Butterflies and Moths of MO \$7.50. Bittersweet Book \$10. 417-532-2045. Lebanon. (Leave message and phone number).

**1962 HARLEY SPORTSTER 900CC:** original distributor. \$50. 573-764-3517. Call in PM.

**YOUR TRUSTED SOURCE FOR QUALITY FEED FOR ALL YOUR LIVESTOCK AND PETS**






**"DOING BUSINESS ON OUR WORD AND A HAND SHAKE"**  
Located in the Heart of the Amish Mennonite Community!  
417-345-8600 • 19 Prairie Lane, Buffalo

# THE TIRES YOU NEED FOR ALL SEASONS

*With brands like:*



**NEXEN TIRE**



**YOKOHAMA**

## ATTEBERRY MFA

### TIRE & AUTO CENTER

333 E. BROADWAY • BOLIVAR, MO  
DUANE ATTEBERRY • 417-326-6286





**COLT REVOLVER DEALER CATALOGS:** Circa 1950's + 1960's. All for \$100. 573-764-3517. Call in P.M.

**FREE MOBILE HOME REMOVAL:** Of any single or double wide in livable condition. Call Charlie 573-241-3676. Licensed & insured.

**FIRST GEAR KILIMANJARO MOTORCYCLE COAT:** XL, but runs smaller. Zip out liner, Kevlar padding on shoulders & elbows, vented, rainproof. Like new. \$95 FIRM. 417-260-0941. Raymondville.

**DRAPES AND CURTAIN RODS:** Off-white, various sizes, \$15 for all obo. 636-239-2695 or 314-560-5700. Washington.

**ST. LOUIS CIVIL WAR SITES OF THE FIGHT FOR FREEDOM:** By Peter Downs, 207 pages, \$7.50. 417-532-2045. Lebanon. (Leave message and phone number).

**5 GAL. PLASTIC BUCKETS:** with lids. \$3 each. 636-239-2695 or 314-560-5700. Washington.

**NEW SQUARE D RAINPROOF 50AMP DISCONNECT:** \$160. 636-239-2695 or 314-560-5700. Washington.

**USED JET HOME POLLUTION CONTROL PANNEL:** Model CP700. \$65. 636-239-2695 or 314-560-5700. Washington.

**2 GOODYEAR WRANGLER TIRES:** Kevlar LT245/70R17, all terrain, \$100 for the pair. 417-417-260-0941. Raymondville.

**NOW BUYING STANDING PINE TIMBER:** \$0.20 board ft. International Scale. All stumps and slash mulched; no mess left behind. We also log small acreage, mobile sawmilling available as well. 417-991-9280.

**I BUY:** Old lever action rifles & Revolvers. Call Matt 573-280-5638. Sunrise Beach.

**RAINBOW VACUUM CLEANER:** Excellent Condition. \$200. 417-260-0941. Raymondville.

**ALFALFA ORCHARD GRASS:** Small squares for sale. 2<sup>nd</sup> & 3<sup>rd</sup> cutting. \$10 per bale. Bundled in 21 bales per unit. 573-539-2060.

**3-MOTOR MANUALS (CARS):** 1935-1952 for \$20 + Postage. 1935-1949 for \$15 + Postage. 1964-1970 for \$30 + Postage. 417-260-0941. Raymondville.

**NOW BUYING STANDING TIMBER IN THE LAKE OF THE OZARKS AREA:** Free estimates. Littleton Storm & Timber Services. 217-836-4985.

**AB LOUNGE SPORT:** Abdominal exercise chair. Like new. \$50. 210-787-8222. Linn Creek.

**GRASSHOPPER LAWNMOWER 718:** 52" cut, zero turn. Needs an engine. \$200. 417-753-2747.

**BASSET HOUND PUPPIES:** Multiple colors. Might trade for whatever. 417-650-0405. Lebanon.

**NEIGHBORHOODS HOME IMPROVEMENT STORE:** 417-533-5080. Lebanon.

**2<sup>nd</sup> CUTTING GRASS HAY:** \$8/Square bale. 573-308-5884. Rolla.

**HOGS:** Already set out and ready for butcher, 4 available at end of February, more available later in the year. Call or text 573-453-8470. Salem.

## PLAD PANTRY

**DISCOUNT & SURPLUS FOODS FRESH PRODUCE LLC**

**417-532-4700**

Sliced Virginia.....	<b>\$4.99</b> 2 lb.
Traditional Pork Sausage Patties.....	<b>\$1.49</b> 12 oz.
Peach Creme Pie.....	<b>\$3.99</b> 29.6 oz.
Simply Raspberry Lemonade.....	<b>\$6.49</b> 12-11.5 oz.
Organic Wheat Waffles Cereal.....	<b>\$1.79</b> 15 oz.

1571 State Hwy 64 • Tunas, MO 65764  
Hours: 8:30 a.m. to 5:30 p.m. • Closed Wed. & Sun.



# WE BUY White Oak Logs!

- ✓ Top prices for your logs
- ✓ Experienced log buyers
- ✓ Professional service

Chad Cook | Salem Wood Products

**417.718.2950**

5 miles north of Salem, MO on Hwy 19



**INDEPENDENT STAVE COMPANY**  
*Log Procurement & Sales*

[www.independentstavecompany.com](http://www.independentstavecompany.com)



**Larry Heisel Rentals**  
 Have Rock?  
 How about 3,500 lbs. of Hammer  
 Call Larry!  
**573-779-1500**  
 www.larryheiselequipment.com  
 Rental Available in 636 or 573 area code



**Economy Buildings in Stock Now!!**  
 Custom Built, Meeting Your Storage Needs  
 Come check out our double wides!! Sizes 32'x52' available  
 Come Visit Us Near You!  
 For Display Locations in Waynesville, Sunrise Beach, & Camdenton, Call 573-346-3030  
**BENNETT SPRINGS BUILDING CENTER**  
 2519 Hwy 65 • Louisburg, MO • Buy or Rent to Own Storage Buildings • 417-532-8338

**FOR SALE BY OWNER:** 60 acres, power, well, septic, portable cabin, call or text. 417-349-0692.

**ANTIQUE HOG OILER:** \$35. 573-308-5884. Rolla.

**NEED YOUR CDL?????:** We furnish the truck, trailer and teach all requirements for ELDT. Then we will go to the State Highway Patrol for the test. Requires only 2 days of Road and Range training and **MUCH CHEAPER WAY TO GET YOUR CDL.** Jefferson City, Strafford, Willow Springs MO. Call (573)-353-2853 for more information [Info@capitalcdltraining.com](mailto:Info@capitalcdltraining.com)

**POOL TABLES:** Installations, moves, recovers, repairs, accessories, etc. 573-646-1700.

**Carpenter needed for Overman Buildings in Rogersville Missouri to build portable buildings in climate-controlled environment \$20/hour. Must be able to read blueprints, schematics and decipher a cut list. Must have prior experience framing, squaring, and leveling a building. This is a full-time job with benefits. Please send resume to [jgardner@overmanbuildings.com](mailto:jgardner@overmanbuildings.com)**

**PEMBROKE WELSH CORGIES:** D.O.B. 1-5-22. Up to date on shots & wormer. \$300. 417-259-9738.

**1x8 BOXCAR/SHIPLAP:** \$0.79 ft. V-Groove or Flat. Douglas fir, cabin grade. By the board or bundle. American Made General Store, 1542 US Hwy 60, Rogersville, MO. Call: 417-753-8020.

**CHIHUAHUA PUPPIES:** 4-months-old females, cream colored. Two males will be ready in four weeks. Call for pricing. 417-349-3058.

**WANTED:** 1974-85 Chevy Tandem Axel Dump Truck, fixable. Leave message 573-422-3482. Vienna.

**NEW IN BOX MCGANN MANUAL ROCKER RECLINER:** Brown, leather looking fabric upholstery. \$350. 417-693-0389. Conway.

**WANTED TO BUY:** Pup/Short Tractor Trailer (Trailer) (for storage). 573-437-2568.

**FOR SALE 2022 RAM PICK-UP:** Crew cab, 4x4, loaded, only 6,500 miles, Cummins diesel. No Sunday calls 417-733-2068. Buffalo.

**AUSSIE/BORDER COLLIES:** Born 1-9-23, UTD on shots and wormer. Born on the farm! Great prospects for stock dogs or family pets. \$200. 417-701-1372. Hartville.

**KIOTI DK35:** 4 Wheel Drive, 288 Hours, \$6,000. 636-399-4688. Robertsville.

**COWBOY CORGIES:** Born 1-9-23, UTD on shots and wormer. Great prospects for stock dogs or family pets. \$400. 417-701-1372. Hartville.

**Is Your Log Home Starting To Look UGLY?**  
 Professional Staining & Repair  
 (Log Homes & Wood Siding)  
 Call Pine Ridge Rustic  
 Log Home Building Supplies 573-729-7226  
 www.pineridgerustic.com



**FOR SALE:** 32" Patio Table and two Chairs. \$50. 417-288-6714.

**2 BLACK TRI TOY AUSSIES:** 1 female & 1 male. 417-733-7062. Conway.

**FOR SALE:** 4 Drawer Wooden Chest \$5. 417-288-6714.

**3 GENTS WITTMAYER WRIST WATCHES:** 10k gold + 23J. All \$200. 573-764-3517. Call in P.M.

**2 BLUE HEELER & 3 RED HEELER PUPPIES:** Full blooded. 417-664-5926. Conway.

**STRAW FOR SALE:** \$4 per bale. 21 bales to a bundle. 573-539-2060. Versailles.

**Buildings • Hunter's Cabins • Lawn Furniture**  
**JAMCO BUILDERS**  
**JAMCO Portable Buildings**  
 800-688-2064 • 307 Enterprise Dr. • Seymour, MO • www.jamcobuilders.com  
 Rent To Own Plan



**FOR SALE:** AKC German Shepherd puppies, 12 weeks old, 2 males, UTD on shots and wormer. \$375. 417-926-3187. Mountain Grove.

**8FT PICKUP BED:** Red, tailgate, lights, bumper & hitch. \$900. 417-321-1928. Osceola.

**1500 VINTAGE WRISTWATCH DIALS:** \$100. 573-764-3517. Call in PM.

**CASE TRACTOR 1936 RC:** Restored, museum worthy. Parade, show. Only \$3,500. 417-848-8754. Springfield.

**BURIED BY TABLE ROCK LAKE BOOK:** About old towns, cemeteries, stores, etc. that were covered by the lake, 188 pages, \$12.00. 417-532-2045. Lebanon. (Leave message and phone number).

**CHEVROLET 1993 1500 SILVERADO PICKUP:** Long bed, 350VB Automatic. 73,000 Garage kept, rust free miles. \$14, 500. 417-848-8754. Springfield.

**HIKING THE OZARKS BOOK: A Guide to the Area's Greatest Hiking Adventures.** \$6.75. 417-532-2045. Lebanon. (Leave message and phone number).

**BUYING MOBILE HOMES:** Call David at VILLA HOMES IN ROLLA 573-578-8072. Rolla.

**NEW MOBILE HOME STOCK:** Just received (5) new units, they gotta go! 573-657-2176. amegamobliehomes.com

**USED DOUBLE-WIDE:** \$34,900 WOW!!!! This won't last! 573-657-2176. amegamobliehomes.com

**TRUE MODULARS:** 30 to 60 day delivery available, 3 and 4 bedroom 573-657-7040 chateauhomes.net

# Starnes Auto LLC

22115 Rt. 66 • Lebanon, MO 65536  
417.718.2707 Cell  
417.588.3159 Office  
[www.starnesauto.com](http://www.starnesauto.com)

<b>2003 CHEVY S10 EXT CAB 2WD</b> GOLD, VIN#1200, 114,XXX MILES .....	\$5,450
<b>2009 PONTIAC G6</b> GRAY, VIN#2409, 208,XXX MILES.....	\$2,550
<b>2010 FORD ESCAPE</b> GRAY, VIN #0238, 90,XXX MILES .....	\$6,500
<b>2012 CHEVY EQUINOX LTZ</b> MAROON, VIN#6241, 92,XXX MILES .....	\$9,500
<b>2012 CHEVY SILVERADO EXT CAB 4WD</b> WHITE, VIN#2799, 80,XXX MILES .....	\$16,500
<b>2014 GMC TERRAIN SLT</b> MAROON, VIN#1468, 78,XXX MILES .....	\$12,500
<b>2015 CHEVY EQUINOX LT TAN,</b> VIN#6867, 55,XXX MILES .....	\$12,500
<b>THE VEHICLES LISTED BELOW ARE NOT AVAILABLE FOR FINANCING</b>	
<b>2004 FORD SPORT TRAC</b> SILVER, VIN#0901, 277,XXX MILES .....	\$4,200
<b>2006 CHEVY SILVERADO</b> RED, VIN#2463, 201,XXX MILES .....	\$6,200
<b>2008 PONTIAC G6</b> MAROON, VIN#8309, 130,XXX MILES.....	\$4,700
<b>2009 PONTIAC G6</b> SILVER, VIN#9300, 123,XXX MILES.....	\$5,800
<b>2010 SCION XB</b> MAROON, VIN#4368, 228,XXX MILES.....	\$3,200
<b>2015 CHRYSLER 200</b> MAROON, VIN#8808, 106,XXX MILES.....	\$8,500
<b>2016 CHEVY TRAVERSE AWD</b> BLACK, VIN#5787, 122,XXX MILES.....	\$13,500



**SUPPORT SQUAD**  
#Crew'sCrew

WE DO ALIGNMENTS!

## TAYLOR TRUCKS & EQUIPMENT

417-924-2026 • 2676 Hwy. 5, Mansfield, MO

Milwaukee Cordless Tools

**TRAILER PARTS & REPAIR**  
DANUSER DEALER  
T3 Post Driver & Other Attachments  
New Mowers! Bush-Whacker, Big Bee  
Storage Containers & Dry Vans - 20' - 53',  
BUSH-WHACKER HD

**MD144 Bat Wing in stock!**

★ INTIMIDATOR TREE PULLER ★

Portable Generators, Farm Tires, New Semi Tires, PTO's & Parts for Rotary Mowers, Farm Tractor Implements, Plows, Used 15" Bush-Whacker Now In Stock, Discs, and More Skidsteer Attachments: Pallet Forks, Buckets, Grapples, Hay Spears, RR Ties



Bush-Whacker  
Heavy Duty Rotary Cutter

We Invite you To Come By & Look Us Over! Located 2.5 Miles North Of Mansfield, MO On Hwy 5

**WEATHERED BARN WOOD SIDING:** 10" wide. 573-729-7226. [www.pineridgerustic.com](http://www.pineridgerustic.com) Salem.

**LOG SIDING:** 2X8 Pine/Western Cedar [www.pineridgerustic.com](http://www.pineridgerustic.com) 573-729-7226. Salem.

**WE HAVE MOBILE HOMES:** Instock new arrivals (8) homes, need to go as soon as possible! 573-499-9993. columbiadiscountnhomes.com

**USED MOBILE HOMES:** Call David at VILLA HOMES IN ROLLA 573-578-8072. Rolla.

## CALUS LOGGING



Buying Standing Timber  
Walnut & Oak

**Joe Calus, Owner**  
CERTIFIED 417-926-4606 • MTN. GROVE

**I BUY.....used mobile homes.** Call or text 573-338-6250 or email [GregS.CDH@outlook.com](mailto:GregS.CDH@outlook.com)

**1970s KIDS METAL STOVE & FRIDGE:** Nice Lithographic paint, 18" wide x 36" high. \$75. 573-364-7465. Rolla.

**LIONEL TRAIN SET:** Steam engine, tender, caboose and other car, track, and transformer. \$195. 573-364-7465. Rolla.

**LIGHTLY EXPERIENCED GOLF BALLS:** \$3 a dozen. 417-818-3469. Strafford.

**FIREARMS:** Professional Repair, Restorations and Appraisals. Baron's Gunsmithing. 573-363-5801. Camdenton.

**REGISTERED HEREFORD & ANGUS BULLS:** Home raised, Some Show-Me Select Qualified. 573-701-7828. Belgrade.

**DARDEN PROFESSIONAL TIMBER HARVESTING, BUYING STANDING TIMBER:** Great prices, improve wildlife habitat and improve forest health. State Certified & Fully Insured! 573-247-4808. Salem.

**HARLEY FAT BOBS:** Custom flame paint w/ gas caps + lines. \$100. 573-764-3517. Call in P.M.

**TINY HOMES:** We gottem 573-881-3283



# Land

For Sale

Windyville Co., Mo • 216.5 Acres +/-



**\$619,000**

- Located near Bennett Springs State Park and Niangua River access just down the road
- Giant whitetails, strutting toms and world class trout fishing at your doorstep
- Property is scenic, secluded and very quiet and located just off blacktop
- 1 stocked pond, year-round creek and springs, river frontage and excellent trail system
- New graveled entrance with two access points
- Nice roll to property with bottoms, ridges and valuable hardwoods throughout
- Very rare area for large private property ownership
- Minutes to town, resorts and area airports



**WHITETAIL PROPERTIES REAL ESTATE**

HUNTING | RANCH | FARM | TIMBER

**Brian Utecht | 417-766-5595**

[Brian.Utecht@whitetailproperties.com](mailto:Brian.Utecht@whitetailproperties.com)

[WHITETAILPROPERTIES.COM](http://WHITETAILPROPERTIES.COM)

Missouri's Top Land Specialist in 2014, 2015, 2016, 2017, 2018, 2019, 2020 and 2021



# WE HAVE CARGO CONTAINERS



**20' New  
\$5,000**



**40' New  
\$7,000**

**Quarles Supply**

3251 S Springfield Ave  
Bolivar, MO 65613  
417-777-2391