

FREE - TAKE ONE!

Vol. 29 No. 44

JANUARY 26, 2023

800-543-8271 • 800-665-8875

T WEEKLY **TRADER** MAGAZINE



Find us on
Facebook

@myweeklytrader
AUCTIONS PG. 7

VISIT OUR NEW WEBSITE! MYWEEKLYTRADER.COM

LARGEST SELECTION OF NEW & PREOWNED IN YEARS!



**Backed By
Morse**

WE WANT YOUR TRADE.

**ED MORSE
CHEVROLET
BUICK GMC**

ROLLA

FORMERLY FAIRGROUNDS AUTO PLAZA
NEW NAME. SAME TEAM.

100 Fairgrounds Rd., Rolla, MO

573-364-1002

EdMorseChevroletBuickGMCRolla.com

Land

For Sale

Marshfield Co., Mo • 39 Acres +/-



\$450,000

- 1600 sq ft livable pretty home built in 1989
- 3 bed, 2.5 bath
- Partial basement
- John Deere room
- 2-car attached garage with automatic openers
- Home and barn have newer roof (three years old)
- Large barn with loft, electric, and water
- Barn dimensions approx. 45x25 and 30 feet tall
- Electric pulley system for loft
- Barn doors large enough for RV/camper
- Tractor parking in barn

- 3 ponds
- One large pond with dock and bridge
- Great quality perimeter and cross fencing
- House and barn built on highest elevation ridge top
- Panoramic views
- Amazing sunrise and sunset views
- Productive pasture land for hay and livestock
- Nice timber and open feeding areas for hunting
- Secluded and quiet area just minutes from Marshfield

- Nice covered front and back porch with sidewalks
- Jetted tub
- ADT surveillance system
- Many windows for natural light
- Central electric heat and air
- Additional wood heating system
- Marshfield Schools
- 1 mile off blacktop
- 5 miles to Walmart, medical, dining, and more



WHITETAIL PROPERTIES REAL ESTATE

HUNTING | RANCH | FARM | TIMBER

Brian Utecht | 417-766-5595

Brian.Utecht@whitetailproperties.com

WHITETAILPROPERTIES.COM



Missouri's Top Land Specialist in 2014, 2015, 2016, 2017, 2018, 2019, 2020 and 2021



RB16 SERIES

REAR BLADES
20-40 HP 60", 74", 84" Widths

- Cat. 1 hitch
- 7 Forward angles; 3 Reverse angles
- 5 Tilt positions
- 12" Offset left or right
- 14" Moldboard height
- 1/4" Moldboard thickness
- Landscape Rake adaptable

Getting Chores Done
LAND PRIDE
does that.



www.landpride.com

For Outstanding Products & Service
AGRI-ENTERPRISES
1-1/2 Miles South Of Licking, MO On Hwy 63
573-674-2203 • 1-800-653-7152 • www.agri-enterprises.com

HIKING THE OZARKS BOOK: A Guide to the Area's Greatest Hiking Adventures. \$6.75. 417-532-2045. Lebanon. (Leave message and phone number).

LOG SIDING: 2X8 Pine/Western Cedar www.pineridgerustic.com 573-729-7226. Salem.

USED MOBILE HOMES: Call David at VILLA HOMES IN ROLLA 573-578-8072. Rolla.

WEATHERED BARN WOOD SIDING: 10" wide. 573-729-7226. www.pineridgerustic.com Salem.





MODEL 1911 FRAME 8-SHOT C02 PISTOL: Like new, in box with C02 cartridges, 4 clips, pellets & all paperwork. \$95. 573-364-7465. Rolla.

RUBBER & LEATHER BOOTS AND 5-Buckle OVER SHOES: Men's 11, Women's 7, some insulated. \$15-\$40 obo. 636-239-2695 or 314-560-5700. Washington.

VOTED #1 BEST Preowned Car Dealership.

TIM'S USED CARS

(573) 341-3828 • 1334 South Bishop (Hwy. 63) • Rolla, MO
Next to Hwy CC • www.tims-used-cars.com

	2016 GMC SAVANNA 2500 4.8 V-8, auto, Power Equipped, 140,xxx Miles Only \$24,900		2015 FORD F150 XLT Crew cab, 4x4, 2.7 Eco Boost, Power Equipped, 131,xxx Miles Only \$21,900
	2014 RAM 1500 LARAMIE Crew Cab, 4x4, 5.7 Hemi, loaded w/ options, 146,xxx Miles Only \$21,900		2018 NISSAN FRONTIER Ext cab, 2WD, 4 cyl auto, 125,xxx Miles Only \$14,900

LARGE SELECTION OF CARS, TRUCKS, SUVs & VANS!

WE BUY AND SELL new and used mobile homes



(417) 501-1061

BUYING MOBILE HOMES: Call David at VILLA HOMES IN ROLLA 573-578-8072. Rolla.

WANTING TO BUY: Savage Rifle Model 10ML. 636-239-2695. Washington.

NEW MOBILE HOME STOCK: Just received (5) new units, they gotta go! 573-657-2176. amegamobliehomes.com

THE CIVIL WAR ILLUSTRATED HISTORY BOOK: 425 pages, \$12.50. **MEMORIES OF AN OZARKS PIONEER & CIVIL WAR Soldier James Frances Coatney, Private Arkansas Union Calvary, Company D, \$6.50.** 417-532-2045. Lebanon. (Leave message and phone number).

USED DOUBLE-WIDE: \$34,900 WOW!!!! This won't last! 573-657-2176. amegamobliehomes.com

WE HAVE MOBILE HOMES: Instock new arrivals (8) homes, need to go as soon as possible! 573-499-9993. columbiadiscountnhomes.com

NEED YOUR CDL?????: We furnish the truck, trailer and teach all requirements for ELDT. Then we will go to the State Highway Patrol for the test. Requires only 2 days of Road and Range training and MUCH CHEAPER WAY TO GET YOUR CDL. Jefferson City, Strafford, Willow Springs MO. Call (573)-353-2853 for more information Info@capitalcdltraining.com

TINY HOMES: We gottem 573-881-3283

Carpenter needed for Overman Buildings in Rogersville Missouri to build portable buildings in climate-controlled environment \$20/hour. Must be able to read blueprints, schematics and decipher a cut list. Must have prior experience framing, squaring, and leveling a building. This is a full-time job with benefits. Please send resume to jgardner@overmanbuildings.com

TRUE MODULARS: 30 to 60 day delivery available, 3 and 4 bedroom 573-657-7040 chateauhomes.net

I BUY.....used mobile homes. Call or text 573-338-6250 or email GregS.CDH@outlook.com

FIREARMS: Professional Repair, Restorations and Appraisals. Baron's Gunsmithing. 573-363-5801. Camdenton.

REGISTERED HEREFORD & ANGUS BULLS: Home raised, Some Show-Me Select Qualified. 573-701-7828. Belgrade.

DARDEN PROFESSIONAL TIMBER HARVESTING, BUYING STANDING TIMBER: Great prices, improve wildlife habitat and improve forest health. State Certified & Fully Insured! 573-247-4808. Salem.

LIGHTLY EXPERIENCED GOLF BALLS: \$3 a dozen. 417-818-3469. Strafford.

SLIGHTLY USED PUZZLES: Will sell or trade. 417-818-3469. Strafford.

LIONEL TRAIN SET: Steam engine, tender, caboose and other car, track, and transformer. \$195. 573-364-7465. Rolla.

1970s KIDS METAL STOVE & FRIDGE: Nice Lithographic paint, 18" wide x 36" high. \$75. 573-364-7465. Rolla.

ST. LOUIS CIVIL WAR SITES OF THE FIGHT FOR FREEDOM: By Peter Downs, 207 pages, \$7.50. 417-532-2045. Lebanon. (Leave message and phone number).

3 GENTS WITTNAUER WRIST WATCHES: 10k gold + 23J. All \$200. 573-764-3517. Call in P.M.

HARLEY FAT BOBS: Custom flame paint w/ gas caps + lines. \$100. 573-764-3517. Call in P.M.

ALFALEA ORCHARD GRASS: Small squares for sale. 2nd & 3rd cutting, \$10 per bale. Bundled in 21 bales per unit. 573-539-2060.



Meadowview Dutch Market

Bulk & Surplus Groceries • Prices Subject to Stock on Hand

Call to Order
417-993-3017

DELI SPECIAL

SMOKE HOUSE HAM.....REG. \$5.99SALE \$5.49
 MUNSTER CHEESE.....REG. \$5.50SALE \$4.99

TRY our Fresh Homemade DELI Sandwiches: TURKEY, HAM, ROAST BEEF, ITALIAN, BLT'S, PULLED PORK AND BLT PULLED PORK (MADE YOUR WAY!)
 COME IN OR CALL to order! ALSO Custom Deli trays! Veggie OR FRESH Meat-N-Cheese!

8" Apple Pies Ready to Bake \$2.49 EA.	Purina Turkey & Venison Dog Food \$37.99 36 LB BAG	Fully Cooked Chicken Strip Fritters \$1.59 LB.	Wright Bacon \$8.75 2.5 LB.
--	--	--	---

SUPER SALE

Deli Bacon Reg. \$5.99 LB. Sale \$4.99 LB.	Shredded Beef \$2.69 LB.	Lipton Half and Half \$6.49 24 PK.	White American Cheese \$8.49 5 LB. BLOCK
--	--	--	--

BONUS SPECIAL

**CHOCOLATE FILLED
CROISSANTS**

25¢ 2.29 OZ. OR **\$4.75** 24 CT.



BONUS SPECIAL

CHICKEN BROTH

50¢ 32 OZ.



MEADOWVIEW DUTCH MARKET
417-993-3017 Hours: Mon-Thurs 8-5pm
Fri 8-6pm • Sat 8-5pm
23 Miles West on Hwy 64 • Right on T Hwy
9 miles • Left on E Hwy 1 mile on Left

NOW ACCEPTING CREDIT, DEBIT CARDS & EBT

DUTCH COUNTRY STORE, LLC
573-378-4395
Hours: Mon-Thurs 8-5pm
Fri 8-6pm • Sat 8-5pm
5 miles East of Versailles off Hwy C on Kelsay Road

COLT REVOLVER DEALER

CATALOGS: Circa 1950's + 1960's. All for \$100. 573-764-3517. Call in P.M.

110 PORCELAIN POCKET WATCH

DIALS: Perfect for arts & crafts. \$100. 573-764-3517. Call in PM.

DRAPES AND CURTAIN RODS: Off-white, various sizes, \$15 for all obo. 636-239-2695 or 314-560-5700. Washington.

5 GAL. PLASTIC BUCKETS: with lids. \$3 each. 636-239-2695 or 314-560-5700. Washington.

2 GOODYEAR WRANGLER TIRES: Kevlar LT245/70R17, all terrain, \$100 for the pair. 417-417-260-0941. Raymondville.

RAINBOW VACUUM CLEANER: Excellent Condition. \$200. 417-260-0941. Raymondville.

OMAR'S LOGGING

⇒ Oak & Walnut
⇒ Excellent Prices
Amish Owned & Operated



LEAVE MESSAGE: 417-741-0440
Hartville & Surrounding Areas

CENTRAL BOILER **CLASSIC EDGE**
TITANIUM HDX

26% Tax Credit on EPA certified Central Boiler Classic Edge HDX models and installation. Call today to learn more!

Outdoor Wood Furnace CentralBoiler.com

The Classic Edge 360, 560 and 760 HDX are U.S. EPA Certified

Yarbrough Equipment Sales & Services, Inc.
9776 E. State Hwy 00 • Strafford, MO
417-736-2303 • 1-866-286-6901 • www.yarbeq.com




Wright Spray Foam Insulators, LLC
Commercial & Residential
Call for FREE Estimates!

Ervin Gingerich 417-926-2052
B. Eli Yoder 417-746-4932

1890 GOLD TESTING KIT: Glass acid beakers + antique wooden case. \$100. 573-764-3517. Call in PM.

1500 VINTAGE WRISTWATCH DIALS: \$100. 573-764-3517. Call in PM.

HARLEY 45 SOLO: factory rear brake drum + sprocket. \$150. 573-764-3517. Call in PM.

HARLEY PANHEAD DISTRIBUTOR: original, chrome + complete. \$125. 573-764-3517. Call in PM.

WANTED TO BUY: Pup/Short Tractor Trailer (Trailer) (for storage). 573-437-2568.

MISSOURI OZARKS BOOKS: Walkin' Preacher of the Ozarks Guy Howard, \$12.50. Fishes of Missouri \$6.50. Butterflies and Moths of MO \$7.50. Bittersweet Book \$10. 417-532-2045. Lebanon. (Leave message and phone number).

FIRST GEAR KILIMANJARO MOTORCYCLE COAT: XL, but runs smaller. Zip out liner, Kevlar padding on shoulders & elbows, vented, rainproof. Like new. \$95 FIRM. 417-260-0941. Raymondville.

NEW SQUARE D RAINPROOF 50AMP DISCONNECT: \$160. 636-239-2695 or 314-560-5700. Washington.

3-MOTOR MANUALS (CARS): 1935-1952 for \$20 + Postage. 1935-1949 for \$15 + Postage. 1964-1970 for \$30 + Postage. 417-260-0941. Raymondville.

NOW BUYING STANDING TIMBER IN THE LAKE OF THE OZARKS AREA: Free estimates. Littleton Storm & Timber Services. 217-836-4985.

AB LOUNGE SPORT: Abdominal exercise chair. Like new. \$50. 210-787-8222. Linn Creek.

GRASSHOPPER LAWNMOWER 718: 52" cut, zero turn. Needs an engine. \$200. 417-753-2747.

YOUR FULL SERVICE AUTO BODY SHOP

Call today for an appointment or estimate!

DAVIDSON'S Restorations, insurance jobs, and more!



CUSTOM AUTO BODY 417-288-1589 • 115 Lincoln St., Buffalo, MO • f @DavidsonCustoms

I BUY: Old lever action rifles & Revolvers. Call Matt 573-280-5638. Sunrise Beach.

1962 HARLEY SPORTSTER 900CC: original distributor. \$50. 573-764-3517. Call in PM.

GOLDENDOODLE PUPS: Vet checked, shots & wormed. 417-664-2152.

USED JET HOME POLLUTION CONTROL PANNEL: Model CP700. \$65. 636-239-2695 or 314-560-5700. Washington.

EARN \$60,000/YEAR PART-TIME: In the livestock or farm equipment appraisal business. Agricultural background required. Home study course available. 800-488-7570 or www.amagappraisers.com

NEW IN BOX MCGANN MANUAL ROCKER RECLINER: Brown, leather looking fabric upholstery. \$350. 417-693-0389. Conway.

GUARDIAN PUPPIES FOR SHEEP & GOAT HERDS: Akbash, Anatolian, Great Pyrenees cross. Working parents. \$200. 417-718-6044. Buffalo.

FREE MOBILE HOME REMOVAL: Of any single or double wide in livable condition. Call Charlie 573-241-3676. Licensed & insured.

BASSET HOUND PUPPIES: Multiple colors. Might trade for whatever. 417-650-0405. Lebanon.

NEIGHBORHOODS HOME IMPROVEMENT STORE: 417-533-5080. Lebanon.

2nd CUTTING GRASS HAY: \$8/Square bale. 573-308-5884. Rolla.

1x8 BOXCAR/SIPLAP: \$0.79 ft. V-Groove or Flat. Douglas fir, cabin grade. By the board or bundle. American Made General Store, 1542 US Hwy 60, Rogersville, MO. Call: 417-753-8020.

FOR SALE BY OWNER: 60 acres, power, well, septic, portable cabin, call or text. 417-349-0692.

CASE 580B CONSTRUCTION KING BACKHOE: Complete engine rebuilt. Call for pricing. 417-349-3058.

TINY HOMES: We gottem 573-881-3283

CHIHUAHUA PUPPIES: 4-months-old females, cream colored. Two males will be ready in four weeks. Call for pricing. 417-349-3058.

HIKING THE OZARKS BOOK: A Guide to the Area's Greatest Hiking Adventures. \$6.75. 417-532-2045. Lebanon. (Leave message and phone number).

2nd CUTTING GRASS HAY: \$8/Square bale. 573-308-5884. Rolla.

ANTIQUE HOG OILER: \$35. 573-308-5884. Rolla.

KUSTER LOGGING
BUYER of Standing Timber Oak and Walnut
Dozing Now Available
417-259-0047
 References Available



ANTIQUE HOG OILER: \$35. 573-308-5884. Rolla.

STRAW FOR SALE: \$4 per bale. 21 bales to a bundle. 573-539-2060. Versailles.

S&E CUSTOM LUMBER: 417-322-0898. Grovespring.

HOGS: Already set out and ready for butcher, 4 available at end of February, more available later in the year. Call or text 573-453-8470. Salem.

NEW AR-15 RIFLE: S.S. barrel, 4- 20 round clips & 150- 223-REM shells. \$600 for all. Call Bob 417-833-8351. Springfield.

NOW BUYING STANDING PINE TIMBER: \$0.20 board ft. International Scale. All stumps and slash mulched; no mess left behind. We also log small acreage, mobile sawmilling available as well. 417-991-9280.

POOL TABLES: Installations, moves, recovers, repairs, accessories, etc. 573-646-1700.

WANTED TRIUMPH STREET MOTORCYCLE: With electric start. \$2,000-\$3,000. 417-493-2989. Strafford.

WANTED BRUSH GUARD FOR 85 DODGE: Reasonable. 573-308-7064. Leave message will return call. Salem.

OFFICIAL TRACTOR OF TOUGH™

INTRODUCING THE ALL-NEW 5100 SERIES



Marshfield Machinery Inc.
 222 E. Madison • Marshfield, MO 65706
 417-859-2117 • www.marshfieldmachinery.com

*2018 data including all Mahindra group brand sales. MahindraUSA.com © 2020 Mahindra USA Inc.

NEW MAHINDRA TRACTORS

11626 4WD & LDR 26HP	IN STOCK
2638 4WD & LDR 38HP	IN STOCK
4540 4WD & LDR 41HP	IN STOCK
4550 4WD & LDR 48 HP	IN STOCK

USED TRACTORS

MF 4609 90 HP 4WD LDR	45,000
MAHINDRA 2638 38HP 4WD LDR	24,000
MAHINDRA 1635 35HP 4WD LDR	19,500
AC 7010 106 HP CAB	9,500
MF GC1705 23HP 4WD LDR	7,500
MF 135 36 HP	2,750

USED ROUND BALERS

NH RB780A 5X6 MESH	7,500
HESSTON 560 5X6	2,000

USED MISC.

TRUAX 6FT NOTIL DRILL 3PT	10,000
SITREX 8 WHEEL RAKE	1,750
M&W 8 WHEEL RAKE	1,750
LELY 8 WHEEL RAKE	1,750

Marshfield Machinery Inc.
 222 E. Madison
 Marshfield, MO 65706
 417-859-2117
www.marshfieldmachinery.com



**ESTATE
AUCTION
BUFFALO, MO**

AUCTION

Due to the death of the late Maxine Faye Baughman we will sell the following Automobile, Antiques, Collectibles, Household and Misc. At the Home located just West of Buffalo, Mo. On 32 Hwy. To Spring Hills Subdivision entrance go North and East to Holly Street go North to the Auction on

Sat. February 4, 2023 at 9:00 am

WATCH FOR AUCTION COMPANY SIGNS • LUNCH SERVED

FOR MORE PICTURES GO TO: WWW.BRUCEANDLEANAUCTION.COM



AUTOMOBILE

- 2005 Chrysler Pacifica Touring 4 door SUV
3.5 Motor, Automatic Transmission, PW,
PL, Leather Seats, 108,310 Miles

ANTIQUES-COLLECTIBLES

- 48" Oak Claw Footed Round Dining Table (nice)
- 4 Oak Pattern Back Kitchen Chairs
- Grandfather Clock
- Oak Secretary Desk W/Beveled Mirror
- Oak Treadle Sewing Machine
- Oak Spindle Back Rocker
- 5' Glass Fronted Cabinet
- Quilt Box/Cedar Chest
- One Lot of Jewelry
- Misc. Glassware, (Colored Mixing Bowls and Other Pcs.)

HOUSEHOLD

- 35" Vizio Flat Screen TV
- Whirlpool Automatic Washer
- Maytag Electric Dryer
- Panasonic Stereo System
- 25" TV
- 4 Pc. Poster Bedroom Set W/Mattress (bed, dresser, 2 night stands)
- Queen Bed W/Mattress
- 11 Drawer Highboy Chest
- Cradle Rocker W/Foot Stool

HOUSEHOLD CONT.

- 6' Glass Fronted Hutch
- Butcher Block Table
- Entertainment Center
- 2-5' Matching Book Shelves
- 6' Book Case
- 3 Cushion Divan
- Coffee & End Tables
- 3 Cushion Divan
- Wingback Chair
- 6' Metal Bakers Rack
- Jewelry Armour Cabinet
- Computer Desk
- Office Chair
- Lot of Towels, Bedding and Linens
- Table Lamps
- Computer Items (Printer, I-Pad, Kindle Device)
- Sev. Pcs. Silver Plated Items
- Stainless ware
- Kitchen-Aid Mixer white
- Food Saver Vacuum Sealer
- Keurig Coffee Maker
- Sm. Kitchen App.
- Lot of Pots, Pans and Dishes
- Pictures & Wall Hangings
- 2 Vac. Cleaners
- 110v Glass Fronted Electric Heater
- 2 Area Rugs



TOOLS & MISC.

- Sm. Air Compressor
- Air Tank
- Garden & Hand Tools
- Battery Charger
- Ladders
- Gas Trimmer
- Glass Top & Metal Patio Tables W/Chairs
- Metal Porch Rocker/Glider
- New 3' Wide X 10' Long Aluminum Convalescent Ramp
- Wheel Walker
- 6' Metal Shelf
- Misc. Tools
- One Lot of Misc.

ESTATE OF: MRS. MAXINE FAYE BAUGHMAN

TERMS: Everything sells as is, where is. Nothing is to be removed until settled for. Payment of Cash, Check with Proper ID, or Credit Cards. Auction Company or the Owners will not be responsible for loss of items or accidents. Statements made the Day of the Auction take Precedence over Printed Matter.

SALE CONDUCTED BY **BRUCE & Le'AN AUCTION & APPRAISAL, LLC**
THE AUCTION COMPANY THAT APPRECIATES YOUR BUSINESS

For more information and pictures go to our website at www.bruceandleanauction.com

RONNIE BRUCE - Fair Play, MO
417-777-1685 or 417-654-2214
colronbruce@gmail.com

BRANDON BRUCE
Fair Play, MO

BILLY BRUCE - Stockton, MO
417-399-4800
colbbruce@gmail.com

HENRY ESTATE AUCTION

LIVE AUCTION



Kathleen Henry will sell her and the late Bill Henry's personal property-collection at public auction on:

Saturday, January 28, 2023, Beginning at 9:00 AM

Location: Knights of Columbus Hall 3698 Old Highway 50 Gerald Mo 63037

Directions: From Interstate 44, take Exit #247-Highway 50 West, and go 23 miles, then right on Old Highway 50 to auction. Knights of Columbus Hall is about 1 mile East of Gerald. Roads will be marked day of sale.

TOY TRUCKS / 300 +



PRESSED STEEL-DIECAST; Nylint, Ertl, Liberty, Tonka, First Gear, Burago, huge lot large advertising trucks-tractor trailers and smaller trucks-cars, including; **HENRY TRANSPORTATION** licensed truck vans-tractor trailers, Pepsi, Pillsbury, Car Quest, Nylint car hauler, Buss Fuses, Goodwrench, Toys R Us, Campbell Soup, Red Brand Fencing, Campbell 66 Humpin To Please, Coca Cola, Napa, Kmart, Tonka 50th Anniversary, Shell, Racing Performance Parts, Walmart, Motorcraft, John Deere, Coop, Kroger, Daisy BB Guns, Smuckers Jelly, Mountain Dew, Old El Paso, Coker Tire, Mobil, Texaco, Amoco, Mac Tools, Japanese Navajo tractor trailer, Keebler, HY Vee, P.I.E. Transport, Alpo, Kirby Vacuum, Montgomery Ward, Oscar Meyer, Western Auto, ABC Sports, Sears, Steak & Shake, Briggs & Stratton, **DIECAST/ERTL/BANKS;** Anheuser Busch, Amoco, tankers, Sinclair, 1931 Hawkeye crate truck, Sentry Hardware, An Busch horse trailer, Coca Cola, Kroger, 1916 Studebaker, 1929 Model A wrecker truck, forklifts, Burago 1931 Mercedes Benz, 1957 Chevy Corvette, **WIX FILTERS-** 1959 Chevy El Camino-1932 panel delivery truck, Franklin Mint Freightliner Truck, Snap On truck, **ANTIQUÉ;** Charles Doepke Manufacturing road grader, small metal cars-planes-Lehman-Tootsie-Dinky, Old Smitty Toys truck and trailer. **THE MAJORITY OF THESE TRUCKS ARE NEW IN ORIGINAL BOXES LARGE TRUCKS 1:8 SCALE OTHERS 1:25**



TOOLS / SPECIALTY AUTO TOOLS

Miller Thunderbolt 225 arc welder, brazing rods, welding helmet, Lincoln Pro Cut 25 plasma cutter-extra tips, torch-tank set on cart, generator, belt disc sander on stand, Ridgid sliding miter saw, Sioux Tools bench grinder, pancake compressor, air hoses, bench vise, small drill press, 16" scroll saw, plunge router, Craftsman rolling tool cabinet w/side cabinet, electric planer, Sawzall, cordless drills, circular saw, worm drive saw, grinders, sanders, Porter Cable pneumatic nailer-stapler set, Roto Zip, Dremel, tubing tool set, pipe wrenches, 6' level, Craftsman Robo Grip tools, hammers, sledges, tap-die sets, 1/2" drill, jig saw, paint sprayer, 300' tape measure, stud finder set, cable ties, meters, air tool fittings, chisels, drill bits, drill bit Doctor, hex keys, Central Micrometer, Pneumatic tools-cut off disc-ratchets-air Dremel tool set, pneumatic sockets, air sander, 3/4" impact wrench, Napa metal shear, grinders, bench top grinder, large- to 1-11/16" open-box end wrenches, large sockets-Craftsman-S&K-Stanley, 3/4" socket set, 1/4" Craftsman socket sets, extensions-breakers, swivel sockets, C clamps, solder guns, rivet tools, sand paper-discs, scrapers, caulk guns, pliers, vise grips, needle nose, screwdrivers, single strand electric wire-connectors, hack saws, hand saws, hardware, steel stamp sets, tin snips, tool cabinets, work lights, **SNAP ON TOOLS;** sockets, socket set, ratchets, set open-box end wrenches, star bit set, Snap On sander-polisher, Snap On 1/2" impact, Snap On body tools-hammers, ratchets, **AUTO;** car creeper, rolling Schumacher 6v/12v 40/200 amp starter-charger, battery tester, bushing driver set, body tools, U joint press, camshaft bearing remover, gear puller, car dollies, floor jack, receiver hitch-balls, tire gauges-repair kit, lug wrenches, binders, jumper cables, cloth car cover, engine stand, oils-fluids, Michelin radial tires (4) 205/70 R15 on wheels-like new, motorcycle mirrors, **OUTDOOR;** Stihl FS 56RC weed eater-like new, Lawn Boy self-propelled mower w/bagger, log chain, torpedo heater, bike air pump, come-a-long

GUNS / EARLY GUNS / SWORDS / KNIVES SMALL CANNON / RELOADING (GUNS WILL SELL AT NOON)



Winchester MOD 73 .38-.40, Springfield MOD 1873 trapdoor rifle, Remington Calvary carbine-rolling block-20.5" barrel-foreign military marks, Springfield MOD 1872 carbine-trapdoor-"US" marked, Marlin rifle-last Pat 1892, Remington MOD 1917 US Enfield, Winchester 73 carbine #13348, Winchester MOD 73 .44-.40 octagon barrel-S#4438 93B, Winchester MOD 1866 carbine #154465, old .22 rifle, Winchester Classic MOD 94-gold breech-no stock-.30-.30, Tower 1861 musket, India matchlock rifle-4" barrel-ivory inlays, black powder rifle-engraving, flintlock fowler-45" barrel, half stock percussion rifle w/33" barrel, old black powder musket, Marlin 1892-octagon barrel, Daisy BB gun, Model 12 Winchester Featherweight-only made 58-59, Sears-Stevens double barrel 410 MOD 101.7E, Winchester MOD 94 Classic-octagon barrel-original box, 8MM Mauser, Marlin MOD 70 HC .22 semi-auto, Winchester Wildcat .22 semi-auto, Rossi MOD 92 saddle ring carbine .44 Mag, **PISTOLS;** Colt 1861 Navy #3755, Colt 1862 Police, Colt Pocket Model 299222 w/flap holster, Colt 1851 Navy revolver, Colt 1860 Army revolver #195096, Colt gold plated single action Frontier Scout .22 LR revolver-Colorado Gold Rush Commemorative 1868-1978-unfired, Remington MOD 1875 single action Army revolver, ivory handled percussion Pepperbox-6 shot-w/walnut case, "US" brass cast buckle-leather holster-belt-saber hook-cartridge pouch, **KNIVES;** Meyersberd Kirschbaum & Co Calvary saber, sword w/guard, 1913 bayonet, Old Timer, swastika dagger, nazi dress bayonet, Damascus hunting knives-bone-leather handles, Buck Diamondback-NIB, Buck 112 folding knife-NIB, Columbia-Case knives-NIB, Glock knife-new, others-some new, **CANNON;** small fireable signal cannon, **RELOADING;** Lyman reloading press-stand, Lee reloading press-NIB, Lee hand press-NIB, Lee Challenger press-NIB, M1 Carbine 3 die set, .45 Colt Lee 3 die set, 9MM Luger 3 die set, .45-.36-.50 round ball Thompson center mold-new **OPTICS;** Vivitar 20x60 spotting scope, Bushnell 4x .22 scope, red dot sight, Winchester 94 side mount scope mount, AR 15 scope mount, Laserlyte real sight for Ruger .22 pistol. Bow case, gun cases, military patches-medals-buckles, walkie talkies, turkey calls

ANTIQUES / COLLECTIBLES / DOLLS

Keen Kutter hatchet, pair carriage lamps, Alfa Tools countertop drill bit display, Zenith long distance console radio-R822713, Victor Talking Machine-VV215, brass Jim Bridger sculpture, Gilbert Model erector set, early American Flyer train set-lot model buildings-bridges-tower, Lionel generator, wooden model truck, Native American dolls, Kachina dolls, pair Haynes, framed artwork-boats-auto posters, Jesse James-John Wayne metal signs, bear rug w/head, 6 Breyer horses, belt buckles, Hop-A-Long Cassidy lunch box, child's western gloves-holster set, Model sets-Conestoga Wagons-ship-HMS Victory, lot of patterns-blueprints for model building-airplanes-boats, coin-op tabletop juke box, old paper advertising-car/truck, watches-Mickey Mouse, Model A tire cover, Polaris Model DS-114 telescope, **DOLLS;** 30+ collectible dolls including-Effenbee, I Love Lucy, Princess Aurora doll, (2) Shirley Temple dolls, 1993 Holiday Barbie, Barbie Bride doll, Victoria Madame Alexander, Kewpie, Peggy Nisbet-London Bobbie-doll in kilt, (3) GI Joes **LABORATORY GLASSWARE;** old beakers, test tubes-chemical bottles/glass stoppers

BREHE AUCTIONEERING SERVICE, L.L.C.
Union, MO: (636) 583-0841 Owensville, MO: (673) 437-3454
www.breheauction.com
LICENSED AUCTIONEERS:
Kerry Brehe 314.954.3798 Josh Brehe 314.603.3129 Nick Brehe 314.560.7737
Harry Engelhart 636.399.3743

VIEW OUR PHOTO GALLERY ON
www.breheauction.com

Announcements made day of sale supersede all printed material.
TERMS: CASH, PERSONAL CHECKS WITH PROPER I.D., BUSINESS CHECKS WITH BANK LETTER AND NO OUT OF STATE CHECKS UNLESS APPROVED BY SELLER. Email Us At kkauction@sbcglobal.net
Everything sells as is with no guarantees. Not responsible for accidents.

LUNCH WILL BE SERVED BY BEAUFORT
LIONS CLUB

VISIT WEBSITE FOR PICTURES

REAL ESTATE PERSONAL PROPERTY AUCTION

SATURDAY, JANUARY 28th- 10:00 A.M.

Location: 1102 Sunset Drive, Mtn. Grove MO. **Directions:** From 4-Way Stop in Mtn. Grove take North Main Street .6 miles to E. 13th Street on right. Go .6 miles to Sunset Street on right.
WATCH FOR CHADWELL AUCTIONS SIGNS. • **Payment System:** Cash • Checks (With proper identification) Debit Card • Credit Card (Debit / Credit Card Fee Will Apply)
 • Visit www.chadwellauctions.com to view additional pictures!

Kay TOMS



REAL ESTATE

3 Bedroom 2 Bath 1400 sq ft home located in a nice neighborhood setting on a .33 acre lot. Home features a kitchen, large family room, formal dining & a 2 car attached garage. This property boasts of a nice fenced in backyard with plenty of shade, hot tub, and an 8x16 storage building. The third bedroom has been converted into a formal dining area and can easily be converted back to a bedroom. Home is brick veneer/siding and has recently had new vinyl windows. The gas furnace and roof were replaced within the past 5 years. Terms: 10% Down Day of Auction, Taxes Prorated, Closing Costs Split, Balance Due at Closing. For viewing please contact Shawn 417-830-0209

HOUSEHOLD

Amana Flat Top Electric Range • Frigidaire Side by Side Refrigerator • Assorted Dishes • Flatware • Kitchen Appliances • Pots & Pans • Pyrex • Wall Pictures • Oak Dining Room Table & Hutch • Glassware • Howard Miller Grandfather Clock • Bissell Carpet Cleaner • 4 Piece Cherry Bedroom Set w/Water Bed • Wall Mirror • Rocker Recliners • Eden Pure Heaters • Office Chair • Janome Sewing Machine • Hyla Vacuum Sweeper • Ironing Board • Whirlpool Front Load Washer • Lighted Curio Cabinet • Kenmore Front Load Dryer • End Tables • Sofa & Love Seat • Bakers Rack • Lamps • Bird Figurines • Matching Coffee & End Tables • Area Rugs • Plant Stand • Wall Clock • Filing Cabinets • Oak End Tables • Occasional Chair & Ottoman • Entertainment Center • Oak Coffee Table • Oak Office Desk & Chairs • Magazine Rack • Dining Room Table w/4 Chairs • Other



**2007 Dodge Ram
1500 Crew Cab
5.7 Hemi TRX 4x4
180,000 miles (loaded)**

Ever Life Cypress Tounge & Groove Flooring (7 boxes)

OUTDOOR ~ MISC.

Patio Set • Coolers • Limb Saw • Hyre Tough Battery Powered Weed Eater • Medical Supplies • Roll of Insulation • Canning Jars • Weber BBQ Grill • Long Handle Tools • Werner 8' Fiberglass Ladder • 6' Alum Step Ladder • Concrete Yard Ornaments • Murray 38" Riding Lawn Mower • Black Max Push Mower • Drop Cords • HD Jumper Cables • Water Hose • Lawn Seeder • Small Floor Jack • Saw Horses • Hand Sprayer • Stihl Leaf Blower • Steel Posts Driver • Log Chains • Lawn & Garden Tools • Craftsman Hedge Trimmer • Chain Boomers • Assorted Lumber • Steel Posts • Other



ANTIQUES ~ COLLECTIBLES

Hall Tree • Wall Table • Wooden Chairs • Globe w/Stand • Wash Tub • Ash Buckets • Other

SHOP ITEMS

2 Wheel Dolly • Appliance Dolly • 3" Vise • Oils & Solvents • B&D Bench Grinder • Battery Power Drills • Shop Vac • Other

AUCTIONEER'S NOTE: This is a nice Living Estate Auction with a large variety of items. This is just a partial listing! Plan to spend the day with us! *Thanks, Shawn*

DRIVER'S LICENSE OR PICTURE I.D. REQUIRED • TERMS: CASH OR APPROVED CHECK **OR** DISCOVER

Chadwell
Auction Service, LLC
www.chadwellauctions.com

Auctioneer:
SHAWN CHADWELL
417-830-0209
Ringmen:
Weston Chadwell ~ 417-349-0727

Clerk:
SHELLY CHADWELL
Cell: 417-880-8449
Cashiers:
Marla Chadwell • Emily Shaffer
Cassie Collins

PROFESSIONAL SALES MANAGEMENT
LUNCH WAGON • APPRAISAL SERVICE • RAIN OR SHINE
All announcements made day of sale take precedence over any printed matter.
Not responsible for lost or stolen merchandise. Not responsible for accidents.

ST. CLAIR COUNTY REAL ESTATE AUCTION

THURSDAY, FEBRUARY 9, 2023 AT 10 AM

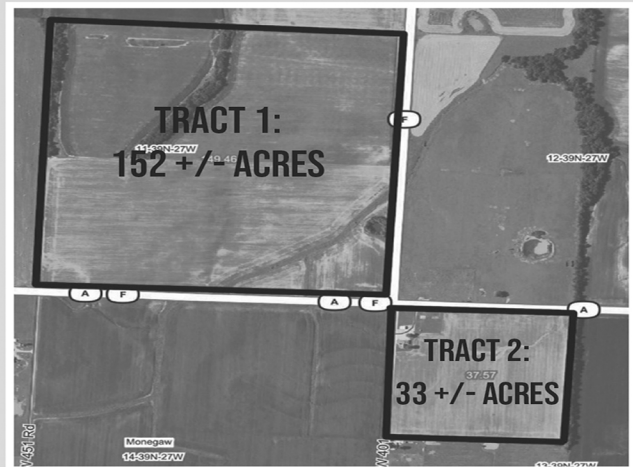
**AUCTION LOCATION: LOWRY CITY CIVIC CENTER,
406 W. 4TH ST., LOWRY CITY, MO 64763**

DIRECTIONS TO PROPERTY: From Hwy 13 north of Lowry City, MO take Hwy A approximately 7 miles to the community of Ohio Missouri where the property on the north and south side of Hwy A.

**185+/- ACRES OFFERED IN TWO TRACTS IN T39N, R27W,
SEC. 14 IN ST. CLAIR COUNTY, MO. THESE TWO TRACTS
ARE HIGHLY TILLABLE PRODUCTIVE GROUND
AND HAVE A VERY LITTLE ROLL TO THE PROPERTY**

**TRACT 1: 152 +/- ACRES WITH
141.05 TILLABLE ACRES.
TRACT 1 LIES NORTH OR
ROUTE A AND WEST OF ROUTE
F.**

**TRACT 2: 33 +/- ACRES WITH
34.83 TILLABLE ACRES. TRACT
2 LIES ON THE SOUTH SIDE OF
ROUTE A AND THE EAST SIDE
OF ROUTE F.**



**SELLER: JAMES DURWARD
& JOAN M. WISHARD TRUST
TREVOR GARTNER TRUSTEE**

**Wheeler 
AUCTIONS & REAL ESTATE**

23101 HWY. 24, PARIS, MO 65275 | 660-327-5890
WWW.WHEELERAUCTIONS.COM

BRETT SAYRE | 573-881-1876
WHEELER AUCTIONS | 660-327-5890
WWW.WHEELERAUCTIONS.COM

Wheeler Livestock Auction

Special Stock Cow Sale

Osceola, MO

SAT., JAN 28, 2023 • 6:00 P.M.

Expecting 700 head of Bred Cows & Pairs

C&E Farms-

- 2 Purebred Hereford bulls 2 y/o. 1 Purebred Char bull 2 y/o.

J&D Farms-

- 19 Ang Hfrs 1,150lbs. Bred to CE Ang bull, to calve March 1st for 60 days.

Cody Jones-

- 3 Blk Ang Hfrs 2 y/o w/Blk calves weighing 200lbs. 3 Blk Hfrs 3 y/o 1,100lbs. Bred Blk coming for 2nd calf.

Bradley Williams-

- 10 Blk hfrs bred to Blk Ang bulls

Douglas Family Farm-

- 90 Fancy Blk & BWF cows 3-4 y/o 1,150lbs. Bred to Blk Ang & Blk SimAng bull. All cows raised calf coming for 2nd & 3rd calf. Good cows complete vaccination program.

Hancock Farms-

- 35 Blk & BWF cows 4-6 y/o, 1,250lbs. Bred 3rd to SimAng bulls to calve Feb 20th.

Garrison Farms-

- 40 Blk cows 3-5 y/o, 1,200lbs bred in 1st. 15 Red & Yell cows 3-5 y/o 1,200lbs bred 1st period. The above 55 cows all bred to Red SimAng bulls w/complete health program. Good gentle fall calvers.

Patterson Farm-

- 16 Horned Hereford cows 4-5 y/o 1,050lbs. Bred to ABS Blk bull, bred 1st period to calve Aug 15th.

Driston Self-

- 12 Red & Blk GelbX cows 3-7 y/o. Bred to Judd Ranch Blk Gelb. All cows home raised. 1 Blk Gelb bull 4 y/o Judd Ranch genetics.

Foster Farms-

- 10 Blk cows 6 y/o 1,200lbs w/7 calves 200lbs. Rest bred 3rd to Blk bull. All cows home raised selling due to death in the family.

Ada Farms-

- 10 Longhorn cows 3-5 y/o. Bred to longhorn or Char bull. All cows have big horns & gentle. 13 longhorn calves 400lbs w/good horns, potential ropers.

Bentall Ranch-

- 12 Blk & BWF cows 7 y/o w/ 300lbs calves. Cows bred back to Herf bull. Blk & BWF cows 7 y/o. Bred 3rd to Herf bull---Total Pending.

Josh & Robert Salmon-

- 17 Blk cows 5-7 y/o, bred to Blk bull to calve March 1st. Owner is changing to fall calving is the reason for selling.

Twin Oaks-

- 40 good Blk Ang cows 4-6 y/o 1,250lbs. 20 Red Ang cows 4-6 y/o 1,200lbs. The above 60 cows bred to Ang or SimAng bulls. All cows have complete health program.

Grey Farms-

- 20 Blk & BWF cows 4-7 y/o 1,250lbs w/20 calves up to 350lbs. Cows bred back to same bull. 15 Red & Yell cows 4-7 y/o 1,200lbs w/ 15 calves up to 350lbs. Cows bred back to same bull. All cows & calves worked.

Special Wean/Vac Calf Sale February 2nd & 16th
February Stock Cow Sale-February 25th



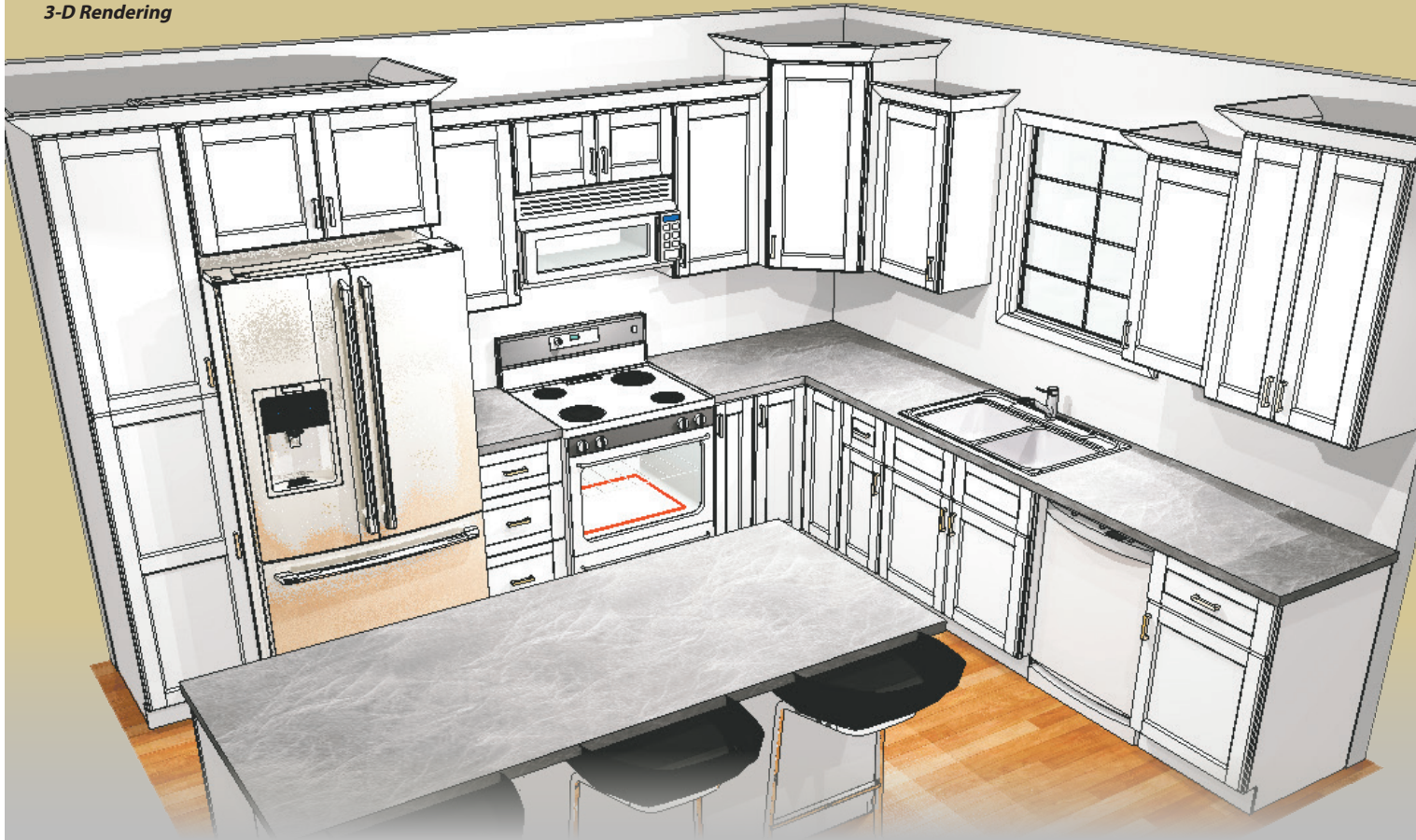
Osceola, MO • 685 SE 13 Hwy., PO Box 560
 BARN 417-646-8102

- Byron Wheeler-417-777-0897
- Darwin Hearting-417-296-1029
- Lyndon Ropp 918-325-1616
- Kevin Wade-660-492-3279
- Tim Sherrer 573-855-1951
- Burleigh Wheeler-417-840-6561
- Red Whistance 417-276-7909
- Les Tennis-417-466-8786

Office Manager: Sarah Wheeler 417-399-4947
 Marketing Manager: Sue Hemenway 417-839-9316
 Bid online on CattleUSA • www.wheelerlivestock.com
 • Like us on Facebook-Wheeler Livestock Auction

DELUXE WHITE OR GRAY SHAKER CABINETS

3-D Rendering

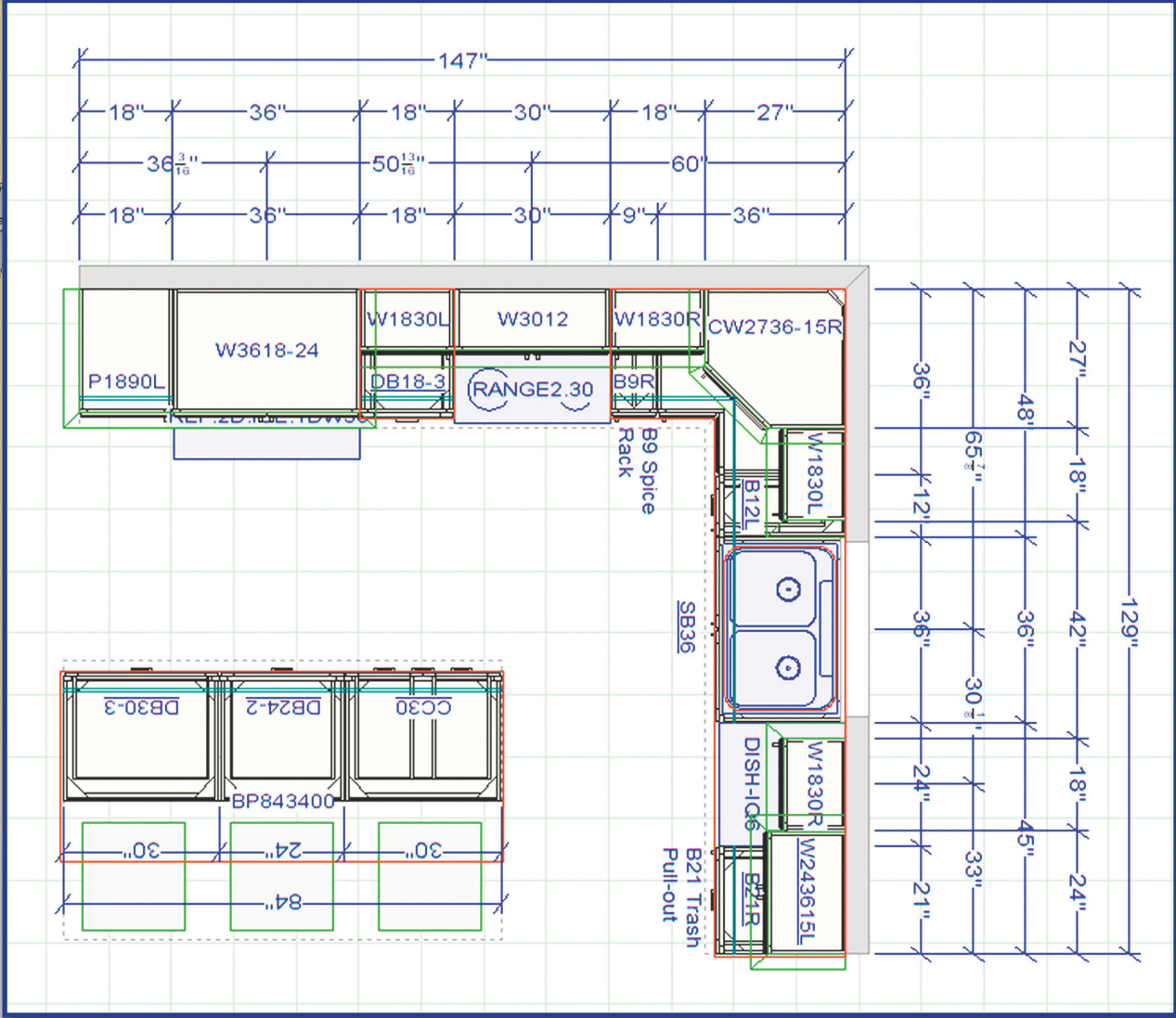


This cabinet layout, all-wood with soft close features on doors and drawers. **ONLY \$7,500**

NEIGHBORHOODS
HOME
IMPROVEMENT STORE
Where **QUALITY** doesn't cost more!

Quartz & Granite Countertops,
Luxury Vinyl Plank. Worlds
biggest selection of bathroom
cabinets & vanity tops

Let us design your next projects layout complete with 3-D renderings



NO particle board or MDF

You can add more or less pieces available in days, not weeks.

CALL OR STOP BY TODAY!

417-533-5080 • 19850 Houston Road, Lebanon

Mon.-Fri. 8am-5pm • Sat. 8am-3pm [f](https://www.facebook.com/neighborhoods-inc.com) [neighborhoods-inc.com](https://www.neighborhoods-inc.com)





ONLINE AUCTION

BID NOW! BIDDING CLOSES FEBRUARY 6TH



ITEM PREVIEW DAYS:
 Bidders will be able to inspect and view items Monday-Friday (8am-4pm) and Saturdays (8am-noon) while the auction is open for bidding at 4177 HWY VV, Berger, MO 63014



Construction Equipment & Tractors

- 2016 JCB 535-125 telehandler
- 2018 JCB 535-95 telehandler
- 2017 JCB 535-95 telehandler
- Unused 2017 Kubota M6S-111 tractor
- 2018 Case CX60C excavator
- 2015 Caterpillar 308E2 CR excavator
- 2014 Hyundai 80CR-9 excavator
- 2011 Volvo ECR48C excavator
- John Deere 410C 4x4 backhoe loader
- 2008 Bobcat S185 skid steer loader
- 2 Genie GS-2632 electric scissor lifts
- Genie GS-1930 electric scissor lift
- Genie GS-4390RT rough terrain scissor lift
- 2 Unused AGT Industrial H12 mini excavators
- International 674 gas tractor
- John Deere 3020 diesel tractor
- Case SC tractor
- Case IH 485 tractor w/ loader
- 2007 Mahindra 7520 4x4 tractor
- Sellick 8,000 lb. rough terrain forklift
- John Deere 450 crawler loader
- Massey Ferguson 135 gas tractor
- Kubota L3901 4x4 tractor w/ loader
- 2000 John Deere 790 tractor
- Case 530 diesel tractor

Trucks, Cars, and Motorhomes

- 2016 Thor Vegas 24.1 motorhome
- 1977 Ford F700 grain truck
- 2006 International school bus
- 1947 Ford Super Deluxe Coupe
- 1985 International S1900 flatbed truck
- 2013 Ford F150 4X4 extended cab tractor
- 2001 International 4900 road tractor
- 2001 Chevrolet Corvette convertible
- 2001 Chevrolet C7500 Kodiak flatbed
- 2001 Ford F250 4x4 extended cab
- 1999 Sterling LT9511 dump truck
- 2006 Chevrolet Silverado 1500 4x4
- 1991 International 4700 dump truck
- 1974 International 1600 grain truck
- 1997 International 4700 grain truck
- 2014 Chevrolet Equinox LT
- 2006 Ford F550 dump truck
- 2003 Ford Expedition
- 2000 Ford F350 flatbed
- 2008 Chevrolet Trailblazer LT
- 2005 Jeep Liberty 4x4
- 2000 Chevrolet 3500 service truck
- 2001 Mercury Mountaineer 4x4
- 1992 Dodge Dakota LE
- 2004 Ford F150 extended cab

Farm Implements

- Kinze 2000 6-11 row no-till planter
- NH BR7060 round baler
- White 5100 6-row planter
- 3-pt grader blades
- John Deere BL8B 8' snow plow for skid steer
- 3-pt & pull type discs
- JD 7000 4 row planter
- 3-pt & pull type plows
- Antique Aeromotor windmill
- Several flatbed farm wagons
- Gehl WR217 9 wheel hay rake
- Oliver 285 18' field cultivator
- IH manure spreader
- Danuser F-8 3-pt post hole digger w/stand
- JD 918 18' grain head
- 6'x10' gravity box w/ 14" extensions
- Gehl 65 MX grinder mixer
- JD 752 4-basket hay tedder
- 3-pt. & pull type brush hogs
- Danuser MD-H1 3-pt. hydraulic post driver
- 3-pt concrete mixer
- NH 1002 square bale stack wagon
- Articulator 721XR 11' golf course mower
- Chandler tandem axle fertilizer spreader
- 3-pt finish mowers
- Hercules 5' pull type roller
- Pittsburgh 6' 3-pt field cultivator
- Hardi Navigator 550 pull type sprayer
- Fuerst ground drive manure spreader
- Woods 15' batwing brush hog
- Case IH 8725 silage chopper w/ 2 heads
- NH 256 hay rake w/ dolly wheels
- Bison NB80 240 8' 3-pt grader blade
- Kinze 2210 8-16 split row planter
- Walinga 510 Agri-Vac grain vac
- Patz 2400 horizontal feed mixer
- Hesston 1085 9' haybine
- NI ground drive manure spreader
- Water wagon w/ 1,300 gallon poly tank
- NH 853 chain round baler
- Krause 2500 7' 3-pt chisel plow
- Oliver 7' grain drill
- Trailer creep feeders
- Remlinger 3-pt or skid steer bale slicer
- NH 1411 10' discbine
- JD 220 20' grain head
- NH 352 grinder mixer
- 26' folding pasture harrow
- JD 1326 7'2" discbine
- JD 535 round baler
- JD 1710 12' disc chisel
- JD 158 loader w/ accessories
- Bush Hog 2615 15' brush hog
- Phoenix 16' 3-pt rotary harrow
- Kuhn GMD 800-G11 HD 10' 3-pt disc mower
- Case IH 5400 13' grain drill on Yetter no-till cart
- Finn MSW-24 straw blower
- John Deere 3-pt 2-row corn planter
- Heider model R 10' auger wagon
- IH 2-pt Fast Hitch disc plow
- IH 2-pt Fast Hitch 6' disc
- JD 9-shank V-ripper
- Case IH 4800 24' field cultivator
- JD 630B 8.5' pick-up head for chopper
- Fimco ground drive manure spreader
- Arps 728 3-pt backhoe
- NH 355 grinder mixer
- Lely 500 gal. boomless sprayer
- 3-pt vegetable planter

- Unused storage containers 7'-40'
- Unused skid steer attachments
- Unused portable restrooms
- Unused workbench tool boxes
- Unused hoop buildings
- 2- Unused Firestone 20.8-38 tractor tires

Trailers & Camper

- 2012 Sabre 281RLDS 5th wheel camper
- 2021 Starlette 25' gooseneck flatbed trailer
- Viking 31' flatbed semi trailer
- Haulette 20'6" flatbed trailer
- Cronkite 15' flatbed trailer
- Trail King 14' flatbed trailer
- 2 16' flatbed trailers
- Homemade 3' by 6' utility trailer
- Hale 6'x20' gooseneck stock trailer
- Homemade 12.5' stock rack trailer
- Rice 24' tilt bed trailer
- 2022 Master Tow car dolly
- Sooner 24' double deck stock trailer
- J&B 18' flatbed trailer

ATVs & Lawnmowers

- 2004 Kawasaki Bayou 250 ATV
- JD 455 diesel riding mower
- Homemade tractor w/ JD LUC engine
- 2011 Polaris Sportsman 500 HO ATV
- 2009 Kubota BX1860 compact tractor
- 2002 Honda TRK250TM ATV
- 2006 Honda TRX350FM 4x4 ATV

Shop Equipment, Tools, and Misc.

- Unused Milwaukee tools
- Lincoln AC225 stick welder
- Ridgid 300 pipe cutter with accessories
- Unused Agrok ATK-TC24 tire changer
- Craftsman 12" bandsaw on stand
- Large air powered sausage stuffer
- Butcher Boy model B12 industrial meat saw
- Ridgid 535 industrial pipe threader
- Group of rough sawn ash lumber
- MBA Crystal Blast 3624 sand blasting cabinet
- Stihl & other chainsaws
- David White mod. 8202 transit w/ accessories
- TeeJet Matrix 430 ag GPS system
- Warn 12,000 lb. electric winch w/ air compressor
- Stihl FS55RC gas trimmer
- Stihl FS90 gas string trimmer
- Craftsman oscillating spindle sander
- Lincoln Weldanpower 225 G7 welder generator
- Craftsman 25-gal 6 hp air compressor
- Fortress Brand Ultra-Quiet Series Air Compressor
- Delta 7" bench grinder on cast iron base
- Pallets of oak & ash firewood
- Steel & concrete cattle guards
- 25- 12' steel corral panels

More items listed at SchneiderAuctioneers.com

643 LOTS

All items sell regardless of price. All items start at only \$1.

SCHNEIDER Auctioneers LLC
 573-834-2207 • 573-291-8075
www.SchneiderAuctioneers.com

ESTATE AUCTION

SUNDAY, JAN. 29TH, 2023 • 10:00 A.M.

THE MOFFAT CENTER 467 CO RD 604, LINN, MO

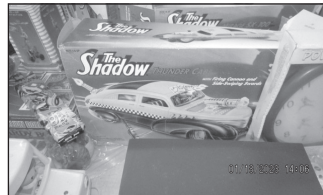
DIRECTIONS: FROM LINN, TAKE HWY. 50 WEST 1 ½ MI. TO CO. RD. 604, TURN LEFT & GO 1 MILE TO BUILDING ON RIGHT, OR FROM JEFFERSON CITY, TAKE HWY. 50 EAST APPROX. 18 MI. & TURN RIGHT ON CO. RD. 604.

ANTIQUES & COLLECTIBLES

3 pc. Oak bedroom set with high back bed, dresser & wash stand; Glove box dresser; Oak bookcase secretary; Walnut bookcase; Wash stand; Curved glass oak china cabinet; Old & Vintage Christmas; Shiny Bright Ornaments; Noma Bubble lights; Ceramic Tree; 7 ft & 6 ft Aluminum Christmas Tree; Hallmark Ornaments; Beaded & Mesh purses; Large amount of costume jewelry; 100+ S&P sets; Oil lamps; Coleman lanterns; Military Items; Head vases; Old tools; Graniteware; Porcelain Pony Express sign; Tins; Old photos; Tin types; Vintage Easter décor; Vintage kitchen items; Canes; Trunks; Pictures; Frames; Old books; Old Magazines; 4 Old clocks; Lights; Lamps; Baskets; Roseville pottery; 1950's Vintage plastic; Hummels; Several crocks & jugs; Crock bowls; Fishing rods & reels; Hens on nest; 30 pcs. pink depression glass; Carnival glass; Fenton cranberry baskets; Other pcs. Fenton; Pyrex; H.P. china; Child's water set; Large amt Vintage toys; 10 BB guns; Cap guns; 13 pc. Carnival table set; Metal toy trucks – Buddy L, Structo & Wyandotte; C/I Toy stoves & banks; Indian dolls; Glass candy containers; Hot Wheels; Ball cards; 19 Hand Stitched Quilts; Large amount of linens, fancy work & chenille spreads; Old 33 records; 5 gal. Uhl jug; Walnut marble top tables; 2 Walnut lamp tables; Anvil. Lots more antiques & collectibles. This is a very partial list.

NANCY NORTHWAY ESTATE

SEE PICTURES AT
www.moffatauction.com



See www.moffatauction.com for photos

Note: This auction represents a lifetime collection. There are lots of nice things to be sold. There will be two auction rings all day. Please make plans to attend. Rick. **Terms:** Cash or good check with proper identification. All sales are final. Everything sells as is, where is. Proper identification is necessary to obtain a buyer's number. Announcements day of sale supersede all printed material. Food on grounds.

RICHARD MOFFAT AUCTION SERVICE



573-761-4293
Jefferson City, MO

Auctioneers:
Richard Moffat & BJ Moffat
www.moffatauction.com

573-690-2823
Linn, MO

ANNUAL JANUARY CONSIGNMENT AUCTION

SATURDAY, JANUARY 28, 2023 AT 9 AM
WHEELER AUCTIONS LOT, 23101 HWY. 24, PARIS, MO



2500+ PIECES OF MACHINERY

**FROM AREA FARMERS
AND DEALERS!**

**RECEIVING MACHINERY DAILY STARTING:
Monday, January 9 until Wednesday, January 25
8 A.M. - 5 P.M. (M-F) | 9 A.M. - 3 P.M. (Sat. & Sun.)**

**BID
LIVE**

Live Online Bidding Powered By: **proxibid**

**BID
NOW**

Online Bidding Provided By
Equipmentfacts
Powered by TractorHouse.com, MachineryTrader.com, TruckPaper.com & MarketBook.com

**VISIT WHEELERAUCTIONS.COM
FOR MORE INFORMATION!**

Wheeler 
AUCTIONS & REAL ESTATE

23101 HWY. 24, PARIS, MO 65275 | 660-327-5890
WWW.WHEELERAUCTIONS.COM

CALUS LOGGING

20 YEARS EXPERIENCE

Buying Standing Timber
Walnut & Oak

Joe Calus, Owner
417-926-4606 • MTN. GROVE

CERTIFIED



OMAR'S DOZING

- ⇒ Clear land
- ⇒ Clean up woods
- ⇒ Make driveways
- ⇒ Clear property lines
- ⇒ Build ponds

Amish Owned & Operated

LEAVE MESSAGE: 417-741-0440
Hartville & Surrounding Areas



DARDEN PROFESSIONAL TIMBER HARVESTING, BUYING STANDING TIMBER: Great prices, improve wildlife habitat and improve forest health. State Certified & Fully Insured! 573-247-4808. Salem.

SLIGHTLY USED PUZZLES: Will sell or trade. 417-818-3469. Strafford.

LIONEL TRAIN SET: Steam engine, tender, caboose and other car, track, and transformer. \$195. 573-364-7465. Rolla.

MODEL 1911 FRAME 8-SHOT C02 PISTOL: Like new, in box with C02 cartridges, 4 clips, pellets & all paperwork. \$95. 573-364-7465. Rolla.

1970s KIDS METAL STOVE & FRIDGE: Nice Lithographic paint, 18" wide x 36" high. \$75. 573-364-7465. Rolla.

ST. LOUIS CIVIL WAR SITES OF THE FIGHT FOR FREEDOM: By Peter Downs, 207 pages, \$7.50. 417-532-2045. Lebanon. (Leave message and phone number).

3 GENTS WITTNAUER WRIST WATCHES: 10k gold + 23J. All \$200. 573-764-3517. Call in P.M.

HARLEY FAT BOBS: Custom flame paint w/ gas caps + lines. \$100. 573-764-3517. Call in P.M.

COLT REVOLVER DEALER CATALOGS: Circa 1950's + 1960's. All for \$100. 573-764-3517. Call in P.M.

NEED YOUR CDL?????: We furnish the truck, trailer and teach all requirements for ELDT. Then we will go to the State Highway Patrol for the test. Requires only 2 days of Road and Range training and MUCH CHEAPER WAY TO GET YOUR CDL. Jefferson City, Strafford, Willow Springs MO. Call (573)-353-2853 for more information Info@capitalcdltraining.com

110 PORCELAIN POCKET WATCH DIALS: Perfect for arts & crafts. \$100. 573-764-3517. Call in PM.

NOW BUYING STANDING TIMBER IN THE LAKE OF THE OZARKS AREA: Free estimates. Littleton Storm & Timber Services. 217-836-4985.

1890 GOLD TESTING KIT: Glass acid beakers + antique wooden case. \$100. 573-764-3517. Call in PM.

1500 VINTAGE WRISTWATCH DIALS: \$100. 573-764-3517. Call in PM.

WEATHERED BARN WOOD SIDING: 10" wide. 573-729-7226. www.pineridgerustic.com Salem.

LOG SIDING: 2X8 Pine/Western Cedar www.pineridgerustic.com 573-729-7226. Salem.

USED MOBILE HOMES: Call David at VILLA HOMES IN ROLLA 573-578-8072. Rolla.

BUYING MOBILE HOMES: Call David at VILLA HOMES IN ROLLA 573-578-8072. Rolla.

NEW MOBILE HOME STOCK: Just received (5) new units, they gotta go! 573-657-2176. amegamobliehomes.com

USED DOUBLE-WIDE: \$34,900 WOW!!!! This won't last! 573-657-2176. amegamobliehomes.com

WE HAVE MOBILE HOMES: Instock new arrivals (8) homes, need to go as soon as possible! 573-499-9993. columbiadiscounthomes.com

THE CIVIL WAR ILLUSTRATED HISTORY BOOK: 425 pages, \$12.50. **MEMORIES OF AN OZARKS PIONEER & CIVIL WAR Soldier James Frances Coatney, Private Arkansas Union Calvary, Company D, \$6.50. 417-532-2045. Lebanon.** (Leave message and phone number).

TRUE MODULARS: 30 to 60 day delivery available, 3 and 4 bedroom 573-657-7040 chateauhomes.net

I BUY.....used mobile homes. Call or text 573-338-6250 or email GregS.CDH@outlook.com

FIREARMS: Professional Repair, Restorations and Appraisals. Baron's Gunsmithing. 573-363-5801. Camdenton.

LIGHTLY EXPERIENCED GOLF BALLS: \$3 a dozen. 417-818-3469. Strafford.

REGISTERED HEREFORD & ANGUS BULLS: Home raised, Some Show-Me Select Qualified. 573-701-7828. Belgrade.

Online Only

Collectibles Auction

Online bidding open now until Sunday January 29th.

Location: 1030 Peaceful Dr. Galena, Mo. 65656

207 Lots of Nice Collectible Figurines & Watches including
TMK1 thru TMK7 Hummels - Cybis - Lladro - Goebel - R.S. Prussia
- Royal Doulton - ADEE KAYE - CROTON - Android & more

To bid online or more information see
fosterauctionservice.com or hibid.com

Estate of Jim Burbridge

Auctioneer: Larry Foster
Phone: (417) 723-8329
Cell: (417) 839-6860



Foster Auction & Appraisal Service
www.fosterauctionservice.com
Email: bidnowsold@aol.com



MID MISSOURI STOCKYARDS

REGULAR SALE EVERY THURSDAY 11AM

SPECIAL COW SALE • FEBRUARY 4TH AT 6 PM

WATCH OUR WEEKLY SALE IN REAL TIME ON DVAUCTION.COM

For Farm Visits, Market Updates, or Trucking
Call **Zach Cox 417-777-1320**
Dan Romine 573-578-4939

**Competitive Buyers!
Competitive Commission!
Competitive Market!**

Barn: 417-532-9292  [Facebook](https://www.facebook.com/midmostockyards)

I-44 • Exit 123 "just outside of Lebanon"
17505 Route 66, Phillipsburg, MO 65722
For weekly market updates, visit us at www.midmostockyards.com

HARLEY 45 SOLO: factory rear brake drum + sprocket. \$150. 573-764-3517. Call in PM.

HARLEY PANHEAD DISTRIBUTOR: original, chrome + complete. \$125. 573-764-3517. Call in PM.

STRAW FOR SALE: \$4 per bale. 21 bales to a bundle. 573-539-2060. Versailles.

1962 HARLEY SPORTSTER 900CC: original distributor. \$50. 573-764-3517. Call in PM.

DRAPES AND CURTAIN RODS: Off-white, various sizes, \$15 for all obo. 636-239-2695 or 314-560-5700. Washington.

RUBBER & LEATHER BOOTS AND 5-Buckle OVER SHOES: Men's 11, Women's 7, some insulated. \$15-\$40 obo. 636-239-2695 or 314-560-5700. Washington.

5 GAL. PLASTIC BUCKETS: with lids. \$3 each. 636-239-2695 or 314-560-5700. Washington.

MISSOURI OZARKS BOOKS: Walkin' Preacher of the Ozarks Guy Howard, \$12.50. Fishes of Missouri \$6.50. Butterflies and Moths of MO \$7.50. Bittersweet Book \$10. 417-532-2045. Lebanon. (Leave message and phone number).

NEW SQUARE D RAINPROOF 50AMP DISCONNECT: \$160. 636-239-2695 or 314-560-5700. Washington.

USED JET HOME POLLUTION CONTROL PANNEL: Model CP700. \$65. 636-239-2695 or 314-560-5700. Washington.

WANTING TO BUY: Savage Rifle Model 10ML. 636-239-2695. Washington.

EARN \$60,000/YEAR PART-TIME: In the livestock or farm equipment appraisal business. Agricultural background required. Home study course available. 800-488-7570 or www.amagappraisers.com

FIRST GEAR KILIMANJARO MOTORCYCLE COAT: XL, but runs smaller. Zip out liner, Kevlar padding on shoulders & elbows, vented, rainproof. Like new. \$95 FIRM. 417-260-0941. Raymondville.

GOLDENDOODLE PUPS: Vet checked, shots & wormed. 417-664-2152.



BUFFALO LIVESTOCK MARKET LLC

276 Hwy 32 W. ,Buffalo, MO
January 21st, 2023
Receipts: 1120

REPRESENTATIVE STEERS
300-400 @ 190.00 to 237.00
400-500 @ 195.00 to 235.00
500-600 @ 185.00 to 201.00
600-700 @ 170.00 to 191.00
700-800 @ 165.00 to 170.00
800-900 @ 150.00 to 162.00

REPRESENTATIVE HEIFERS
300-400 @ 170.00 to 201.00
400-500 @ 165.00 to 200.00
500-600 @ 160.00 to 179.00
600-700 @ 150.00 to 163.00
700-800 @ 150.00 to 154.00
800-900 @ 125.00 to 136.00

FEEDER BULLS
300-400 @ 180.00 to 200.00
400-500 @ 170.00 to 190.00
500-600 @ 155.00 to 185.00
600-700 @ 150.00 to 172.00
700-800 @ 138.00 to 160.00
800-900 @ 120.00 to 135.00

STOCKS COWS
Bred Cows 800.00 to 1225.00
Cow/Calf Pairs 975.00 to 1385.00

SLAUGHTER BULLS
High Yield 105.00 to 115.00
Low Yield 75.00 to 95.00

SLAUGHTER COWS
Fleshy 75.00 to 87.00
Med Flesh 74.00 to 83.00
Thin Flesh 62.00 to 76.00

QUESTIONABLE HEALTH OR CRIPPLE COWS
50 Down

**Sheep & Goat Sale
Tuesday Night 6pm**

Some Cows have no value for food just because they "walk off" don't mean you get a check.

MON-WED MARKET REPORT
Listen to KJEL 103.7FM • Lebanon or KYOO 99FM • Bolivar

VIEW OUR SALES AT CATTLEUSA.COM

CALL FOR TRUCKING OR ON-FARM VISIT

Lyle Caselman • Owner-Manager
417-345-7876 • mobile 417-533-2944
Leon Caselman • Owner
417-345-4514 • mobile • 417-588-6185

KILMER FARM EQUIPMENT

Consignment Auction

SATURDAY, MARCH 4, 2023 • 9:30 AM

AUCTION LOCATION: 14769 Cattle Lane, Versailles, MO 65084

Directions: At the Intersection of Hwy 5 and Hwy 52 in Versailles, go North on Hwy 5 for 1 mile to Cattle Ln then turn Right or East and go ¼ mile to Sale Site.

Ad Deadline: Tuesday, Feb. 7, 2023

CONTACT DANIEL OR MARK KILMER TO CONSIGN OR FOR MORE INFORMATION (573) 378-6615

ACCEPTING CONSIGNMENTS ON LOT 2/18 - 3/1



Wheeler AUCTIONS & REAL ESTATE
23101 HWY. 24, PARIS, MO 65275 | 660-327-5890
WWW.WHEELERAUCTIONS.COM

KILMER FARM EQUIPMENT, LLC
14270 Hwy. 52, Versailles, MO 65084
(573) 378-6615

For more info and photos:
www.wheelerauctions.com

BID LIVE Live Online Bidding Powered by **proxibid** **BID NOW** Online Bidding Provided by **Equipmentfacts**

Fly Free with AFC.



AFC
ALTSID[®] FLY CONTROL
PRODUCTS

KENT

Located in the Heart of the Amish Mennonite Community!
417-345-8600
19 Prairie Lane, Buffalo

Kropf Feeds

Gun Show

Sat. February 4th • 9am-5pm
Sun. February 5th • 9am-3pm

The Red Shed Event Center
Exit 179 Doolittle, MO

Come to the Gun Show!
Buy • Sell • Trade

Admission \$5.00 Cash or Check (10 and under free).

For More information call 573-341-5450 or 573-465-0642

ALFALFA ORCHARD GRASS: Small squares for sale. 2nd & 3rd cutting. \$10 per bale. Bundled in 21 bales per unit. 573-539-2060.

2 GOODYEAR WRANGLER TIRES: Kevlar LT245/70R17, all terrain, \$100 for the pair. 417-417-260-0941. Raymondville.

RAINBOW VACUUM CLEANER: Excellent Condition. \$200. 417-260-0941. Raymondville.

3-MOTOR MANUALS (CARS): 1935-1952 for \$20 + Postage. 1935-1949 for \$15 + Postage. 1964-1970 for \$30 + Postage. 417-260-0941. Raymondville.

AB LOUNGE SPORT: Abdominal exercise chair. Like new. \$50. 210-787-8222. Linn Creek.

GRASSHOPPER LAWMOWER 718: 52" cut, zero turn. Needs an engine. \$200. 417-753-2747.

Carpenter needed for Overman Buildings in Rogersville Missouri to build portable buildings in climate-controlled environment \$20/hour. Must be able to read blueprints, schematics and decipher a cut list. Must have prior experience framing, squaring, and leveling a building. This is a full-time job with benefits. Please send resume to jgardner@overmanbuildings.com

BASSET HOUND PUPPIES: Multiple colors. Might trade for whatever. 417-650-0405. Lebanon.

GUARDIAN PUPPIES FOR SHEEP & GOAT HERDS: Akbash, Anatolian, Great Pyrenees cross. Working parents. \$200. 417-718-6044. Buffalo.

FREE MOBILE HOME REMOVAL: Of any single or double wide in livable condition. Call Charlie 573-241-3676. Licensed & insured.

I BUY: Old lever action rifles & Revolvers. Call Matt 573-280-5638. Sunrise Beach.

NEIGHBORHOODS HOME IMPROVEMENT STORE: 417-533-5080. Lebanon.

S&E CUSTOM LUMBER: 417-322-0898. Grovespring.

NOW BUYING STANDING PINE TIMBER: \$0.20 board ft. International Scale. All stumps and slash mulched; no mess left behind. We also log small acreage, mobile sawmilling available as well. 417-991-9280.

WANTED TO BUY: Pup/Short Tractor Trailer (Trailer) (for storage). 573-437-2568.

Pine Ridge Rustic
Log Home Building Supplies

Services Offered!

- Installation
- Pre-finishing available on interior & exterior
- Dealer for exterior stains

www.pineridgerustic.com

523 CR 2410 • Salem, MO 65560 • Ph: 573-729-7226



- Log Siding
- Beveled Siding
- Car Siding • Red Cedar
- Western Cedar • Pine

NEW AR-15 RIFLE: S.S. barrel, 4- 20 round clips & 150- 223-REM shells. \$600 for all. Call Bob 417-833-8351. Springfield.

FOR SALE BY OWNER: 60 acres, power, well, septic, portable cabin, call or text. 417-349-0692.

NEW IN BOX MCGANN MANUAL ROCKER RECLINER: Brown, leather looking fabric upholstery. \$350. 417-693-0389. Conway.

HIKING THE OZARKS BOOK: A Guide to the Area's Greatest Hiking Adventures. \$6.75. 417-532-2045. Lebanon. (Leave message and phone number).

POOL TABLES: Installations, moves, recovers, repairs, accessories, etc. 573-646-1700.

WANTED TRIUMPH STREET MOTORCYCLE: With electric start. \$2,000-\$3,000. 417-493-2989. Strafford.

Buildings • Hunter's Cabins • Lawn Furniture



JAMCO BUILDERS

JAMCO Portable Buildings

800-688-2064 • 307 Enterprise Dr. • Seymour, MO • www.jamcobuilders.com

Rent To Own Plan

WANTED BRUSH GUARD FOR 85 DODGE: Reasonable. 573-308-7064. Leave message will return call. Salem.

1x8 BOXCAR/SHIPLAP: \$0.79 ft. V-Groove or Flat. Douglas fir, cabin grade. By the board or bundle. American Made General Store, 1542 US Hwy 60, Rogersville, MO. Call: 417-753-8020.

CASE 580B CONSTRUCTION KING BACKHOE: Complete engine rebuilt. Call for pricing. 417-349-3058.

TINY HOMES: We gottem 573-881-3283

CHIHUAHUA PUPPIES: 4-months-old females, cream colored. Two males will be ready in four weeks. Call for pricing. 417-349-3058.

HOGS: Already set out and ready for butcher, 4 available at end of February, more available later in the year. Call or text 573-453-8470. Salem.

WEATHERED BARN WOOD SIDING: 10" wide. 573-729-7226. www.pineridgerustic.com Salem.

LOG SIDING: 2X8 Pine/Western Cedar www.pineridgerustic.com 573-729-7226. Salem.

USED MOBILE HOMES: Call David at VILLA HOMES IN ROLLA 573-578-8072. Rolla.

BUYING MOBILE HOMES: Call David at VILLA HOMES IN ROLLA 573-578-8072. Rolla.

NEW MOBILE HOME STOCK: Just received (5) new units, they gotta go! 573-657-2176. amegamobliehomes.com

USED DOUBLE-WIDE: \$34,900 WOW!!!! This won't last! 573-657-2176. amegamobliehomes.com

WE HAVE MOBILE HOMES: Instock new arrivals (8) homes, need to go as soon as possible! 573-499-9993. columbiadiscountnhomes.com

TRUE MODULARS: 30 to 60 day delivery available, 3 and 4 bedroom 573-657-7040 chateauhomes.net

I BUY.....used mobile homes. Call or text 573-338-6250 or email GregS.CDH@outlook.com

FIREARMS: Professional Repair, Restorations and Appraisals. Baron's Gunsmithing. 573-363-5801. Camdenton.

REGISTERED HEREFORD & ANGUS BULLS: Home raised, Some Show-Me Select Qualified. 573-701-7828. Belgrade.

DARDEN PROFESSIONAL TIMBER HARVESTING, BUYING STANDING TIMBER: Great prices, improve wildlife habitat and improve forest health. State Certified & Fully Insured! 573-247-4808. Salem.

LIGHTLY EXPERIENCED GOLF BALLS: \$3 a dozen. 417-818-3469. Strafford.

SLIGHTLY USED PUZZLES: Will sell or trade. 417-818-3469. Strafford.

LIONEL TRAIN SET: Steam engine, tender, caboose and other car, track, and transformer. \$195. 573-364-7465. Rolla.

1970s KIDS METAL STOVE & FRIDGE: Nice Lithographic paint, 18" wide x 36" high. \$75. 573-364-7465. Rolla.

THE CIVIL WAR ILLUSTRATED HISTORY BOOK: 425 pages, \$12.50. MEMORIES OF AN OZARKS PIONEER & CIVIL WAR Soldier James Frances Coatney, Private Arkansas Union Calvary, Company D, \$6.50. 417-532-2045. Lebanon. (Leave message and phone number).

FIXED KNOT FENCE

- Deli Sandwiches
- Glass Bottle Milk
- Homemade Yogurt
- Cheese & Spices
- Homemade Bread
- Bulk Foods
- Hydraulic Hoses
- Johnson & Ritchie Waterers
- Electric Fence Supplies
- Stay-Tuff Fence
- Gates & Panels

VISIT YOUR ONE STOP SHOP FARMERS QUIK STOP
5 mi. East of Lebanon on Hwy 32 • 417-991-1938

ST. LOUIS CIVIL WAR SITES OF THE FIGHT FOR FREEDOM: By Peter Downs, 207 pages, \$7.50. 417-532-2045. Lebanon. (Leave message and phone number).

3 GENTS WITTNAUER WRIST WATCHES: 10k gold + 23J. All \$200. 573-764-3517. Call in P.M.

Starnes Auto LLC
22115 Rt. 66 • Lebanon, MO 65536
417.718.2707 Cell
417.588.3159 Office
www.starnesauto.com

2002 CHEVY MALIBU SILVER, VIN#1543, 66,XXX MILES	\$4,500
2003 CHEVY S10 EXT CAB 2WD GOLD, VIN#1200, 114,XXX MILES.....	\$5,450
2009 PONTIAC G6 GRAY, VIN#2409, 208,XXX MILES	\$2,550
2010 FORD ESCAPE GRAY, VIN #0238, 90,XXX MILES	\$6,500
2011 SCION XB 5 SPEED LIGHT BLUE, VIN#5298, 153,XXX MILES	\$4,550
2012 CHEVY EQUINOX LTZ MAROON, VIN#6241, 92,XXX MILES	\$9,500
2012 CHEVY SILVERADO EXT CAB 4WD WHITE, VIN#2799, 80,XXX MILES	\$16,500
2015 CHEVY EQUINOX LT TAN, VIN#6867, 55,XXX MILES	\$12,500
2015 GMC TERRAIN DENALI CHARCOAL, VIN#5305, 45,XXX MILES	\$17,250
2017 CHEVY EQUINOX LS WHITE, VIN#2720, 95,XXX MILES ...	\$12,800

THE VEHICLES LISTED BELOW ARE NOT AVAILABLE FOR FINANCING

1999 CHEVY SILVERADO PEWTER, VIN#5627, 347,XXX MILES	\$3,200
2000 CHEVY S-10 BLUE, VIN#8092, 206,XXX MILES	\$4,200
2004 FORD SPORT TRAC SILVER, VIN#0901, 277,XXX MILES ..	\$4,200
2006 CHEVY SILVERADO RED, VIN#2463, 201,XXX MILES.....	\$6,200
2008 PONTIAC G6 MAROON, VIN#7309, 130,XXX MILES.....	\$4,700
2009 CHEVY SILVERADO 4DR 4WD BLACK, VIN#3344, 235,XXX MILES.....	\$9,000
2010 SCION XB MAROON, VIN#4368, 228,XXX MILES.....	\$3,200
2015 CHEVY SILVERADO LTZ BLACK, VIN#2764, 83,XXX MILES.....	\$26,000
2016 CHEVY TRAVERSE AWD BLACK, VIN#5787, 122,XXX MILES.....	\$13,500

SUPPORT SQUAD
#Crew'sCrew
WE DO ALIGNMENTS!

PLAD PANTRY
DISCOUNT & SURPLUS FOODS
FRESH PRODUCE LLC
417-532-4700

Strawberry GoGurts.....**\$1.99** 16 - 2 oz.
Fully Cooked Alaska Salmon Portions..... **\$14.99** 5 lbs.
Winter Toast Cold Brew Coffee.....**\$0.99** 42 oz.
Frozen Peppermint Hot Chocolate Ice Cream **\$2.99** 1.5 qt.
Coconut Caramel Crunch Bars.....**\$1.79** 9.7 oz.

1571 State Hwy 64 • Tunas, MO 65764
Hours: 8:30 a.m. to 5:30 p.m. • Closed Wed. & Sun.



YOUR AD GOES HERE!

Add YELLOW Color For An Additional \$3 Per Reader Ad

All ads will include Phone Number (unless requested to be deleted by advertiser) and City Or Town, Phone Number with Area Code counts as one word. City or Town counts as one word.

RATE: 80¢ Per Word. All Classified Ads Require Payment Before Print.

(1)	80¢	(2)	\$1.60	(3)	\$2.40	(4)	\$3.20
(5)	\$4.00	(6)	\$4.80	(7)	\$5.60	(8)	\$6.40
(9)	\$7.20	(10)	\$8.00	(11)	\$8.80	(12)	\$9.60
(13)	\$10.40	(14)	\$11.20	(15)	\$12.00	(16)	\$12.80
(17)	\$13.60	(18)	\$14.40	(19)	\$15.20	(20)	\$16.00
(21)	\$16.80	(22)	\$17.60	(23)	\$18.40	(24)	\$19.20
(25)	\$20.00	(26)	\$20.80	(27)	\$21.60	(28)	\$22.40
(29)	\$23.20	(30)	\$24.00	(31)	\$24.80	(32)	\$25.60
(33)	\$26.40	(34)	\$27.20	(35)	\$28.00	(36)	\$28.80
(37)	\$29.60	(38)	\$30.40	(39)	\$31.20	(40)	\$32.00

Buy 3 Weeks - Get 4th Week Free! (Must be same ad)

Place your Classified Ad TODAY!

417-532-9131 • 800-665-8875

Fax: 417-532-8140

Or Mail To: P.O. Box 192 • Lebanon, MO 65536

For your convenience we accept MasterCard, Visa, Discover or American Express



DEADLINE FOR CLASSIFIED ADS: FRIDAY 4:00PM!

Name _____

Address _____

City _____ Email _____

State _____ Zip Code _____ Phone _____

Ad Total \$ _____ X # Weeks _____ = Amount Enclosed \$ _____

RUBBER & LEATHER BOOTS AND 5-Buckle OVER SHOES: Men's 11, Women's 7, some insulated. \$15-\$40 obo. 636-239-2695 or 314-560-5700. Washington.

MODEL 1911 FRAME 8-SHOT C02 PISTOL: Like new, in box with C02 cartridges, 4 clips, pellets & all paperwork. \$95. 573-364-7465. Rolla.

1500 VINTAGE WRISTWATCH DIALS: \$100. 573-764-3517. Call in PM.

WANTING TO BUY: Savage Rifle Model 10ML. 636-239-2695. Washington.

NEED YOUR CDL?????: We furnish the truck, trailer and teach all requirements for ELDT. Then we will go to the State Highway Patrol for the test. Requires only 2 days of Road and Range training and MUCH CHEAPER WAY TO GET YOUR CDL. Jefferson City, Strafford, Willow Springs MO. Call (573)-353-2853 for more information Info@capitalecdltraining.com

I BUY: Old lever action rifles & Revolvers. Call Matt 573-280-5638. Sunrise Beach.

GOLDENDOODLE PUPS: Vet checked, shots & wormed. 417-664-2152.

HARLEY FAT BOBS: Custom flame paint w/ gas caps + lines. \$100. 573-764-3517. Call in P.M.

COLT REVOLVER DEALER CATALOGS: Circa 1950's + 1960's. All for \$100. 573-764-3517. Call in P.M.

110 PORCELAIN POCKET WATCH DIALS: Perfect for arts & crafts. \$100. 573-764-3517. Call in PM.

1890 GOLD TESTING KIT: Glass acid beakers + antique wooden case. \$100. 573-764-3517. Call in PM.

Shop Our TRUCKLOAD SALE



0% FINANCING AVAILABLE ON ZERO-TURN MOWERS



HERITAGEGARD WINTER SERVICE SALE

UP TO 33% OFF YOUR ANNUAL MAINTENANCE

THE BIGGEST SAVINGS EVENT OF THE YEAR



Heritage
TRACTOR

Scan Here For Savings!



Offer valid until 01/31/23
Some restrictions apply, see dealer for details.

Larry Heisel Rentals
LARGE or SMALL...
We Rent!
Crawler Loaders • Excavators • Backhoes
Call Larry! **We Deliver!**
573-779-1500
www.larryheiselequipment.com
Rental Available in 636 or 573 area code

HARLEY 45 SOLO: factory rear brake drum + sprocket. \$150. 573-764-3517. Call in PM.

HARLEY PANHEAD DISTRIBUTOR: original, chrome + complete. \$125. 573-764-3517. Call in PM.

1962 HARLEY SPORTSTER 900CC: original distributor. \$50. 573-764-3517. Call in PM.

DRAPES AND CURTAIN RODS: Off-white, various sizes, \$15 for all obo. 636-239-2695 or 314-560-5700. Washington.

5 GAL. PLASTIC BUCKETS: with lids. \$3 each. 636-239-2695 or 314-560-5700. Washington.

MISSOURI OZARKS BOOKS: Walkin' Preacher of the Ozarks Guy Howard, \$12.50. Fishes of Missouri \$6.50. Butterflies and Moths of MO \$7.50. Bittersweet Book \$10. 417-532-2045. Lebanon. (Leave message and phone number).

NEW SQUARE D RAINPROOF 50AMP DISCONNECT: \$160. 636-239-2695 or 314-560-5700. Washington.

ANTIQU HOG OILER: \$35. 573-308-5884. Rolla.



\$500 OFF LS BACKHOES

Since they don't require removal of the lower 3-point hitch arms, our sub-frame mounted, quick-attach backhoes are time-savers even before you start digging in.

Call for more information about adding a backhoe to your tractor, or add one to a NEW tractor.

\$500 Off In-Stock Backhoes.
Offer good Jan-Feb 2023



WCT Farm & Lawn
417-859-4311
SALES • SERVICE • PARTS
3299 E. EVERGREEN ROAD
STRAFFORD, MO

WE HAVE CARGO CONTAINERS



**20' New
\$5,000**



**40' New
\$7,000**

Quarles Supply

3251 S Springfield Ave
Bolivar, MO 65613
417-777-2391