

FREE - TAKE ONE!

Vol. 29 No. 33

NOVEMBER 10, 2022

800-543-8271 • 800-665-8875

WEEKLY TRADER MAGAZINE



Find us on Facebook

@myweeklytrader
AUCTIONS PG. 10

VISIT OUR NEW WEBSITE! MYWEEKLYTRADER.COM

0%

FOR UP TO 60mo W.A.C. *OR* FREE FRONT END LOADER WITH PURCHASE OF ANY IN STOCK BOBCAT TRACTOR



COMBO PACKAGE AVAILABLE

END OF YEAR BLOW OUT SALE ON IN STOCK TRACTORS

Take advantage of Year End Farm Depreciation



CT 1021 HST w/ Front Loader



CT 1025 HST w/ Front Loader



CT 2025 HST W/ FRONT LOADER



CT 2035 HST W/ FRONT LOADER

Ask about our 6yr 2000hr. Powertrain Warranty

Package Deals Available, Call for Details

Implements & Attachments in stock!



Bobcat

OF ROLLA



1387 S. BISHOP AVE., ROLLA, MO
800-813-6944

WWW.STAHLMANPOWERSPORTS.COM

WE HAVE CARGO CONTAINERS



**20' New
\$5,000**



**40' New
\$7,000**

Quarles Supply

3251 S Springfield Ave
Bolivar, MO 65613
417-777-2391



DH15 SERIES

DISC HARROWS
65 HP Max: 60", 72", 90"

- Adjustable gang angles
- Notched or smooth disc blades
- Heavy-duty frame and heat-treated disc blades
- Ideal for landscapers and small acreage farmers

Getting Chores Done
LAND PRIDE
does that.



www.landpride.com

For Outstanding Products & Service

AGRI-ENTERPRISES

1-1/2 Miles South Of Licking, MO On Hwy 63
573-674-2203 • 1-800-653-7152 • www.agri-enterprises.com

INTERNATIONAL HARVESTER TRUCKS BOOK: The Complete History. Hardback, large book, 208 pages. \$12.50. 417-532-2045. Lebanon. (Leave message and phone number).

5 GAL. PLASTIC BUCKETS: with lids. \$3 each. 636-239-2695. Washington.

WEATHERED BARN WOOD SIDING: 10" wide. 573-729-7226. www.pineridgerustic.com Salem.

HIKING THE OZARKS BOOK: A Guide to the Area's Greatest Hiking Adventures. \$6.75. 417-532-2045. Lebanon. (Leave message and phone number).





LOG SIDING: 2X8 Pine/Western Cedar www.pineridgerustic.com 573-729-7226. Salem.

WE HAVE MOBILE HOMES: Instock new arrivals (8) homes, need to go as soon as possible! 573-499-9993. columbiadiscountohomes.com

VOTED #1 BEST Preowned Car Dealership

TIM'S USED CARS

(573) 341-3828 • 1334 South Bishop (Hwy. 63) • Rolla, MO
Next to Hwy CC • www.tims-used-cars.com

 <p>2019 RAM 1500 Crew Cab, 4x4, Tradesman Classic, 5.7 Hemi, Power Equipped, 177,xxx Miles Only \$19,500</p>	 <p>2015 FORD F150 XLT 4x4, Crew Cab, 2.7 Eco Boost, Power Equipped, 131,xxx Miles Only \$23,900</p>
 <p>2015 FORD F350 XLT 4x4, 6.7 Diesel, Power Equipped, 176,xxx Miles Only \$29,500</p>	 <p>2014 FORD F150 XLT 4x4, Crew Cab, 5.0 V-8, Power Equipped, 89,xxx Miles Only \$22,900</p>

LARGE SELECTION OF CARS, TRUCKS, SUVs & VANS!

KUSTER LOGGING

BUYER of Standing Timber
Oak and Walnut

Dozing Now Available

417-259-0047

References Available



USED MOBILE HOMES: Call David at VILLA HOMES IN ROLLA 573-578-8072. Rolla.

BUYING MOBILE HOMES: Call David at VILLA HOMES IN ROLLA 573-578-8072. Rolla.

TINY HOMES: We gottem 573-881-3283

NEW MOBILE HOME STOCK: Just received (5) new units, they gotta go! 573-657-2176. amegamobliehomes.com

USED DOUBLE-WIDE: \$34,900 WOW!!!! This won't last! 573-657-2176. amegamobliehomes.com

TRUE MODULARS: 30 to 60 day delivery available, 3 and 4 bedroom 573-657-7040 chateauhomes.net

I BUY.....used mobile homes. Call or text 573-338-6250 or email GregS.CDH@outlook.com

FIREARMS: Professional Repair, Restorations and Appraisals. Baron's Gunsmithing. 573-363-5801. Camdenton.

REGISTERED HEREFORD & ANGUS BULLS: Home raised, Some Show-Me Select Qualified. 573-701-7828. Belgrade.

LIGHTLY EXPERIENCED GOLF BALLS: \$3 a dozen. 417-818-3469. Strafford.

EARLY 1900's CAMEL BACK STEAMER TRUNK: Oak, 5 strap, solid, nice condition. \$95. 573-364-7465. Rolla.

3 GENTS WITTNAUER WRIST WATCHES: 10k gold + 23J. All \$200. 573-764-3517. Call in P.M.

MISSOURI OZARKS BOOKS: Ozark Baptizings, Hangings & Other Diversions \$12.50. Walkin' Preacher of the Ozarks Guy Howard, \$12.50. Missouri Caves in History & Legend \$6.50. Weird Missouri \$10. Missouri Curiosities, Roadside Oddities, \$7.50, Roadside Geology of MO. \$6.50. Fishes of Missouri \$6.50. Butterflies and Moths of MO \$7.50. Bittersweet Book \$10. 417-532-2045. Lebanon. (Leave message and phone number).

1999 Bobcat 331 Excavator

3325 Hr.
75% Tracks
12" & 24" Buckets



Most all new hoses, rebuilt turn motor. Great working machine.

20' Blair Cattle Trailer



Nice & clean, ready to work, brakes need work, center gate.

3010 Kawasaki Mule 4x4



Diesel, all new drive train and axels.

22' Truck Box Freezer



Great working, walk-in freezer, built-in shelving, can load or deliver.

Farm Auction • November 19th
25998 Hwy N, Lebanon
See AuctionZip (47012)
573-247-7161

OFFICIAL TRACTOR OF TOUGH™

INTRODUCING THE ALL-NEW 5100 SERIES



Marshfield Machinery Inc.
222 E. Madison • Marshfield, MO 65706
417-859-2117 • www.marshfieldmachinery.com

*2018 data including all Mahindra group brand sales. MahindraUSA.com © 2020 Mahindra USA Inc.

Mahindra Rise.

NEW MAHINDRA TRACTORS

1626 4WD & LDR 26HP IN STOCK
2638 4WD & LDR 38HP IN STOCK
4540 4WD & LDR 41HP IN STOCK
4550 4WD & LDR 48 HP IN STOCK

USED TRACTORS

MAHINDRA 2638 38HP 4WD LDR 24,000
MAHINDRA 1635 35HP 4WD LDR 19,500
AC 7010 106 HP CAB 9,500
MF GC1705 23HP 4WD LDR 7,500
MF 135 36 HP 2,750

USED ROUND BALERS

MF 1745 4X5 10,000
NH RB780A 5X6 MESH 8,500
HESSTON 560 5X6 2,000

USED MISC.

TRUAX 6FT NOTIL DRILL 3PT 10,000
SITREX 8 WHEEL RAKE 1,750
M&W 8 WHEEL RAKE 1,750
LELY 8 WHEEL RAKE 1,750

Marshfield Machinery Inc.
222 E. Madison
Marshfield, MO 65706
417-859-2117
www.marshfieldmachinery.com

LIONEL TRAIN SET: Steam engine, tender, caboose and other car, track, and transformer. \$195. 573-364-7465. Rolla.

110 PORCELAIN POCKET WATCH DIALS: Perfect for arts & crafts. \$100. 573-764-3517. Call in PM.

1962 HARLEY SPORTSTER 900CC: original distributor. \$50. 573-764-3517. Call in PM.

YOUR FULL SERVICE AUTO BODY SHOP

We do everything from insurance jobs to full restorations!



DAVIDSON'S

Call to schedule an appointment for estimates

CUSTOM AUTO BODY **417-288-1589 • 115 Lincoln St., Buffalo, MO •** **@DavidsonCustoms**



1970s KIDS METAL STOVE & FRIDGE: Nice Lithographic paint, 18" wide x 36" high. \$75. 573-364-7465. Rolla.

1890 GOLD TESTING KIT: Glass acid beakers + antique wooden case. \$100. 573-764-3517. Call in PM.

MADE IN TIMBER BOOK: A settlement history of Fort Leonard Wood, Bloodland, Cookville, old towns, schools and cemeteries. \$12.50. 417-532-2045. Lebanon. (Leave message and phone number).

HARLEY FAT BOBS: Custom flame paint w/ gas caps + lines. \$100. 573-764-3517. Call in P.M.

HARLEY 45 SOLO: factory rear brake drum + sprocket. \$150. 573-764-3517. Call in PM.

SLIGHTLY USED PUZZLES: Will sell or trade. 417-818-3469. Strafford.

COLT REVOLVER DEALER CATALOGS: Circa 1950's + 1960's. All for \$100. 573-764-3517. Call in P.M.

HARLEY PANHEAD DISTRIBUTOR: original, chrome + complete. \$125. 573-764-3517. Call in PM.

1500 VINTAGE WRISTWATCH DIALS: \$100. 573-764-3517. Call in PM.



Call to Order
417-993-3017

Meadowview Dutch Market

Bulk & Surplus Groceries • Prices Subject to Stock on Hand

DELI SPECIAL

SWEET LEBANON BOLOGNA REG. \$6.99 SALE \$6.49

MILD CHEDDAR CHEESE REG. \$6.99 SALE \$5.85

TRY our Fresh Homemade DELI Sandwiches: TURKEY, HAM, ROAST BEEF, ITALIAN, BLT'S, PULLED PORK AND BLT PULLED PORK (MADE YOUR WAY)! COME IN OR CALL to order! ALSO Custom Deli trays! Veggie OR FRESH Meat-N-Cheese!

<p><i>Feta Cheese</i> Crumbles 99¢ LB.</p> 	<p><i>Chicken</i> Wings \$1.99 LB.</p> 	<p><i>Hot & Spicy</i> Popcorn Chicken \$1.99 LB.</p> 
<p><i>Shrimp</i> Egg Role \$2.49 LB.</p> 	<p><i>Jumbo</i> Franks 75¢ 12 OZ.</p> 	<p><i>Wright</i> Applewood Bacon \$3.99 1.5 LB.</p> 

ALL CREAM CHEESE DIPS

10% OFF!!!



MEADOWVIEW DUTCH MARKET
417-993-3017 Hours: Mon-Thurs 8-5pm
Fri 8-6pm • Sat 8-5pm
23 Miles West on Hwy 64 • Right on T Hwy
9 miles • Left on E Hwy 1 mile on Left

NOW ACCEPTING CREDIT, DEBIT CARDS & EBT

DUTCH COUNTRY STORE, LLC
573-378-4395
Hours: Mon-Thurs 8-5pm
Fri 8-6pm • Sat 8-5pm
5 miles East of Versailles off Hwy C on Kelsay Road



Specializing in farm and home, recreation, and commercial listings.

Whether you're buying or selling, our team can save you time, help you avoid costly mistakes, and ensure you get the best value. Call or visit us online today to start your home search, talk to an agent or request your free home value report!

Located in Mountain Grove, Ava, Gainesville and Theodosia.

CENTURY 21[®]
Hometown Properties



MOUNTAIN GROVE
 9871 E 20th St, Bldg A
 Mountain Grove, MO 65711
 417.926.1070

Buildings • Hunter's Cabins • Lawn Furniture



JAMCO Portable Buildings
 800-688-2064 • 307 Enterprise Dr. • Seymour, MO • www.jamcobuilders.com

Rent To Own Plan

First general purpose Torrefied Kiln on this side of the Ozarks!!

Our Thermal Modification Kiln can produce torrefied wood at 0% moisture. This lends itself to great outdoor and water-resistant uses. Find out how torrefied wood can help your next decking, kitchen, siding or lake project!

Call 417-217-3572, visit <https://tejasbuds.com/torr>, or email levirainbowenter@ibifax.com



DRAPES AND CURTAIN RODS: Off-white, various sizes, \$15 for all obo. 636-239-2695. Washington.

RUBBER & LEATHER BOOTS AND 5-Buckle OVER SHOES: Men's 11, Women's 7, some insulated. \$15-\$40 obo. 636-239-2695. Washington.

HEARTH CRAFT GLASS BI-FOLD FIREPLACE DOORS PURCHASED AT FORSHAW'S FIREPLACE: Antique brass. \$160 obo. 636-239-2695. Washington.

KITCHEN FAUCET MOEN: Single lever, sprayer, new cartridge. \$45 obo. 636-239-2695. Washington.

I AM LOOKING FOR LAND TO RENT TO GROW WHEAT: I can pay a good rate per acre for land that is fairly level, decent soil and in a 30 mile radius of Marshfield. I am looking for 80-500 acres. 417-741-2288. Marshfield.

32" VIZIO FLAT SCREEN COLOR TV: With remote. Like new. \$45. 210-787-8222. Linn Creek.

1986 CORVETTE PROJECT CAR: Needs trailer. \$1,500 OBO. 573-435-6987. Edgar Springs.

EXHAUST MANIFOLD FOR 55-56 CHEVROLET: \$100. 573-734-2822. Bismark.

KEEPING YOUR HERD IN TOP PRODUCTION

WE ARE THE TRUSTED SOURCE FOR ALL YOUR HERD'S NEEDS.



NOW OFFERING WEEKLY DELIVERY TO THE MOUNTAIN GROVE AREA!

Family owned and operated since 1950.



Hudson Feed & Grain
 417-532-3921
 316 W. Commercial St., Lebanon
www.hudsonfeedandgrain.com

963 Cat Loader Dozer



Ser. #21Z03127, rebuilt final drives both sides, 50% undercarriage, 10,583 Hr. Great working machine.

1988 Lowe Pontoon Boat



Always stored inside, 18' Alum, spare tire. 48 Hp. Evenrude. Runs Great.

1997 Terex SS842



42' reach, 8000# lift, 95% air tires, 4000+ Hr.

1995 Toyota 317K, Automatic, Farm Truck. Runs Great.

Needs some lights before road ready, great flatbed.



Farm Auction • November 19th
 25998 Hwy N, Lebanon
 See AuctionZip (47012)
 573-247-7161

BOB'S CONSTRUCTION IS NOW HIRING FOR JACKS OF ALL TRADES:

Framing, concrete, fence building, flooring install, electric, plumbing. Full time work 40 hours plus weekly. MUST have own basic hand tools & transportation. Starting pay is \$17.00 an hour based on experience. Call 417-669-0379 for an interview. Laclede County.

ALFALFA HAY FOR SALE: Big round silage bales. 417-343-4958. Seymore.

WWII FOOD MERMITE CAN: \$125. 573-734-2822. Bismark.

CLEAN MATTRESS BOX SPRINGS: \$50. 417-370-7865. Springfield.

CHRISTIAN FARMER WANTING PASTURE: To rotationally graze cattle. 417-718-5910.

YEARLING GRASS FED STEER: No antibiotics or growth hormone. Call for details. 573-201-4435.

5 RED ANGUS BULLS FOR SALE: 13 months old, semen tested \$2,500. Also, 1 older red angus bull. Proven heifer bull. \$2,500. 573-539-2060. Versailles.

HOMEMADE UNICORN COSTUME: Head & body, 3-person costume. Great for birthday parties. \$100 O.B.O. 573-205-9401. Sullivan.

AUSTRALIAN SHEPHERD PUPPIES FOR SALE: Some natural bobtail, some not. Grey Merles & Black & White. 573-760-5157.

RADIATOR FOR 55 DODGE PICKUP: \$50. 573-734-2822. Bismark.

308 WINCHESTER 100: \$800. 573-247-2480. Salem.

15' Woods Batwing Mower



451 New Holland 7' 3pt Sickle Bar Mower.

20'x40' Chicken Coop Portable

Pipe waters, bucket feeders, crates new propane brooder, antique egg washer.



166 New Holand Hay Inverter/ Accumulator
Stored inside, 8 wheel 3pt rake.



2010 M9540 DTC Kubota



95 HP, 3800 Hr. AC/Heat, 4x4, LA1353 Loader

Farm Auction • November 19th
25998 Hwy N, Lebanon
See AuctionZip (47012)
573-247-7161



CLASSIC EDGE
TITANIUM HDX

26% Tax Credit on EPA certified Central Boiler Classic Edge HDX models and installation. Call today to learn more!

Outdoor Wood Furnace
CentralBoiler.com

Yarbrough Equipment Sales & Services, Inc.
9776 E. State Hwy 00 • Strafford, MO
417-736-2303 • 1-866-286-6901 • www.yarbeq.com



The Classic Edge 360, 560 and 760 HDX are U.S. EPA Certified

FOR SALE 2016 CLUB CAR 4x4 KUBOTA: 20HP Diesel motor, dump bed, windshield, read panoramic mirror, 133.1/10 hours, always garaged. \$11,500. Call 573-544-8059.

OLD CREAM CAN: Good condition, very heavy, no rust. \$50. 417-532-6561. Lebanon.

FOR SALE OR TRADE: 1 Antique Warm Morning Coal Stove. Nice. \$50. 573-734-2822. Bismark.

CALUS LOGGING

20 YEARS EXPERIENCE

Buying Standing Timber

Walnut & Oak

Joe Calus, Owner

417-926-4606 • MTN. GROVE

CERTIFIED

ELECTRIC WELDER: \$150 or trade. 573-734-2822. Bismark.

WANTED OLD CHEVY WRECKER OR ROLLBACK: Or older car to restore. 573-734-2822. Bismark.

HANDICAP BENCH WALKER: With storage. \$50. 417-532-6561. Lebanon.

WANTED: '57 Chevy or Ford car. 573-734-2822. Bismark.

WE BUY

White Oak Logs!



Top prices for your logs



Experienced log buyers



Professional service

Chad Cook | Salem Wood Products

417.718.2950

5 miles north of Salem, MO on Hwy 19



INDEPENDENT STAVE COMPANY

Log Procurement & Sales

www.independentstavecompany.com

SHOP LOCAL FOR YOUR BULK GOODS NEEDS!





**Canning Supplies, Deli Meat/Cheeses,
Jams/Jellies, Candies/Chocolates, Fruits/Veggies**

3294 St. Hwy. 73 • Buffalo, MO
417-345-5100 • [f @OurOrchardCountryStore](https://www.facebook.com/OurOrchardCountryStore)

PLAD PANTRY

**DISCOUNT & SURPLUS FOODS
FRESH PRODUCE LLC**
417-532-4700



Boneless, Skinless Chicken Breasts	\$2.49 lb.
Natural Turkey Franks	\$1.79 lb.
Sliced Beef Bologna	\$1.89 lb.
Guacamole & Tortilla Chip Snackers.....	\$4.25 12-2.8oz
Strawberry Flavored Fruit Snacks	\$1.99 17.6 oz.

1571 State Hwy 64 • Tunas, MO 65764
Hours: 8:30 a.m. to 5:30 p.m. • Closed Wed. & Sun.



ALLIS CHALMERS WD-45 TRACTOR: Wide front end, 7' blade, 3pt. hitch, PTO \$1,200. 210-787-8222. Linn Creek.

18 TON HOPPER BOTTOM BIN: Fair Condition. \$600 Will load. 573-378-1998. Versailles.

BRAND NEW DAISY BB GUN: In box, with accessories. \$100. 573-205-9401. Sullivan.

WANTED TO BUY PROPANE TANK: Minimum of 500 gallons. 660-460-7547. Sedalia.

MOSSY OAK 3X CAMO MEN'S JACKET: \$100 Firm. 573-205-9401. Sullivan.

TWO DEWALT DRILLS: 3 batteries, 1 charger, in case, works great. \$100 Firm. 573-205-9401. Sullivan.

YORKIE FOR SALE: Small female \$2,000. 660-534-7314.

1 MALE GERMAN SHEPHERD: 8 weeks old. 417-733-7062.

NICE 36x36 LEVI'S 502: New, \$25/pair. 573-205-9401. Sullivan.

SET OF 5 WOOD LATHE TURNING TOOLS: 636-932-4429. Hermann.

END OF YEAR BLOW OUT SALE ON ALL ZERO TURN MOWERS

MOW NOW. PAY LATER.

● MONEY DOWN ● INTEREST ● PAYMENTS

For 120 days W.A.C. on all in stock Bad Boy Mowers call for more details!



MZ Magnum
54" w/ KOHLER
WAS-~~\$5299~~
NOW-\$4460



ZT Elite
60" w/ KOHLER
WAS-~~\$7189~~
NOW-\$5999



ZT Avenger
60" w/ KAWASAKI
WAS-~~\$6649~~
NOW-\$5523



**More models available!
Call for Details**



Maverick
60" w/ KOHLER
WAS-~~\$8519~~
NOW-\$7223



Maverick HD
48" w/ KAWASAKI
WAS-~~\$10,079~~
NOW-\$8658

CALL FOR CASH PRICING
CALL FOR SPECIAL BONUS DETAILS
CALL FOR CURRENT SERVICE SPECIALS

STAHLMAN
POWERSPORTS
1387 S. BISHOP AVE.,
ROLLA, MO
800-813-6944
WWW.STAHLMANPOWERSPORTS.COM

AVON

make life beautiful



mcg skincare
AVON independent sales representative
417-293-1609
Order online at:
www.avon.com/repstore/mcgskincare

KEN QUILTER 331LB: With 8FT table. Good condition, electric, free motion, groovy board & paper stencil compatible. \$2,000. 913-710-2554. Tunas.

FIXED KNOT FENCE

- Deli Sandwiches
- Glass Bottle Milk
- Homemade Yogurt
- Cheese & Spices
- Homemade Bread
- Bulk Foods



- Hydraulic Hoses
- Johnson & Ritchie Waterers
- Electric Fence Supplies
- Gates & Panels
- Stay-Tuff Fence



VISIT YOUR ONE STOP SHOP
FARMERS QUIK STOP
5 mi. East of Lebanon on Hwy 32 • 417-991-1938

COIN, ANTIQUE, AND COLLECTIBLES AUCTION ONLINE ONLY!

TUESDAY, NOVEMBER 15, 2022 STARTING AT 5:00 PM

INVENTORY LIST:

Caterpillar 988B Wheel Loader
1/50 scale
Vintage license plates
Big Boy Bank
Cross pen & pencil set
Caterpillar Pipelayer model
Oil cans
Cast iron tractor
Allis-Chalmers tractor model
Horse bell
Dog and wolf cast iron bank
Cast iron tractor
Various tractor models, vintage
STP radiator treatment
The Allis Chalmers Story
Army Helmet
American Dimes of the 20th Century
Frisco patches
Cookie gun with attachments
The Friendly Way
Winchester target board
Frisco pen
Skeleton keys
Dog figurine
John Deere parts catalog
Marbles & buttons in a jar
Star Trek toy
John Deere Operator's Manual
Spurs
John Deere Shop Manual

Coin collecting folders
Massey-Ferguson shop manual
Coin collection books
Silver walking liberty half 1940 (2) & 1943 (2)
Mixed silver mercury dimes (15)
1963 Franklin silver half dollar (4)
Allis-Chalmers shop manual
1903 O Silver half dollar
License plate topper
1939 Silver quarters (1939)
1964 Kennedy silver half dollars
1874 Silver 3 cent piece
Salesman sample Jack Walking liberty silver half 1945 (2) & 1945 (2)
Oil can with moving spout
Mixed date silver Roosevelt dimes (20)
Stirrups with covers
Bottle openers
Locket with sterling silver chain
Anchor pendant, sterling silver
World War II battle flag
Antique Welch Clock
Brass horn
Cameo label pin
White boot keychain
Floral label pins
White floral cross pendant

with chain
Gold cross necklace
Pearl necklace
Storage box
Dental anvil
Sam Colt model 1851 Navy 36 caliber
Argentina model 1927 45 caliber FFL
1976 two dollar bills in sequence (10)
Large collection of Knives, 6-10 1/2" with wooden & bone handles
Large Indian mortar & pestle
1957 silver certificate one dollar
5 1/2" Damascus skinner
Orthoflex leather motorcycle tool bag
1930s Department of Health pins
"I Want Roosevelt Again" pin
1964 Batman belt buckle (DC Comics)
Vintage OK dolls
Extensive coin collection
AND MORE!!!



FOR MORE INFORMATION GO TO WWW.EASTERLYAUCTIONCO.COM OR CALL EASTERLY'S AT 417-833-9494



Mike Easterly Auctioneer • 417-833-9494

Not Responsible for accidents or theft. For more information call: Easterly Auction Company, Springfield, MO. Auction Terms: Visa, Mastercard, Cash, Cashier's check or checks with proper I.D. Announcements day of sale take precedence over printed material. Auction Notes: Although information is obtained from sources deemed reliable, auctioneer makes no warranty or guarantee expressed or implied. Buyers should themselves take the opportunity to make their own inspection prior to sale.

www.EasterlyAuction.com • auctionzip.com ID#14770





ONLINE AUCTION

BID NOW! BIDDING CLOSSES NOVEMBER 14



ITEM PREVIEW DAYS:
 Bidders will be able to inspect and view items Monday-Friday (8am-4pm) and Saturdays (8am-noon) while the auction is open for bidding at 4177 HWY VV, Berger, MO 63014

650+ LOTS



All items sell regardless of price. All items start at only \$1.

Tractors & Construction Equipment

- 2018 JCB 86C-1 excavator
- 2014 Kubota KX080-4 excavator
- 2015 Doosan DX85R-3 excavator
- 2018 JCB 131LC excavator
- JD 6400 tractor w/ loader
- NH TS100 tractor w/ loader
- NH 5640 tractor w/ loader
- 2016 Bobcat T630 skid steer
- Case IH 9170 AWD tractor
- IH 1086 tractor
- JD 7720 Titan II 4x4 combine
- JD 6200 2wd tractor
- 4-Used AGT mini excavators
- Kubota BX2230 4x4 tractor w/ loader
- Takeuchi TL26 skid steer
- Cat T60B & T50D forklifts
- Allmand light plant
- Terex AL4000 light plant
- 1954 Case SC tractor
- IH M tractor
- JD 520 tractor
- Ford Golden Jubilee tractor
- Ford 9N tractor
- AC WD45 tractor
- Oliver 77 gas tractor
- MF 165 gas tractor
- Farmall Cub tractor
- Power Buggy wheelbarrow
- Maverick 3250 exc. hammer

Vehicles

- 2000 Tiffin Allegro 36' motor coach
- 2015 Dodge Ram 2500 4x4
- 2011 Ford F350 crew cab 4x4
- 2011 Ford F250 ext cab 4x4
- 1999 Sterling road tractor
- 1992 GMC Topkick dump truck
- 2005 GMC 5500 w/ van body
- 2006 IH school bus
- 2009 Chevrolet Impala LT sedan
- 2010 Dodge Grand Caravan SXT
- 2007 Mercury Mountaineer AWD
- 1998 GMC 2500 4x4
- 1990 Ford Bronco XLT 4x4
- 2002 Chevrolet 3500 4x4 ext cab
- 1998 Dodge Ram 2500 4x4
- 1984 Chevrolet Custom Deluxe 20
- 2010 Chevrolet Silverado 1500 ext cab
- 1996 Chevrolet 3500 4x4
- 1999 Chevrolet S10 pickup
- 1956 International S-160 flatbed

UTVs, ATVs & Mowers

- Kubota RTV900XT 4x4 ATV
- Polaris Big Boss 500 6x6 ATV
- Arctic Cat 400 4x4 ATV
- 2016 Yamaha Kodiak 700 4x4 ATV
- 2016 Yamaha Grizzly 700 4x4 ATV
- Polaris Hawkeye 4x4 ATV
- EZ-GO gas powered golf cart
- Toro Z-Master 74208 zero turn mower
- Toro Z-Master 74179 zero turn mower
- John Deere 425 riding mower
- John Deere SST18 riding mower
- John Deere 125 automatic riding mower
- Yerf Dog go-kart
- Coleman KT196 go-kart

Trailers & Boats

- 2017 Maxxd 28' gn flatbed
- 2019 Winchester Star 20' gn flatbed
- Region Welding 14' dump
- Thor 33' 5th wheel toy hauler
- Titan 4-horse gn
- Utility 48' refrigerated
- Featherlite 12' utility
- 1998 Wells Cargo 24' cargo
- Homemade 34' gn flatbed
- Rawhide 15.5' stock
- Generation III 14' alum. jon boat

Farm Equipment

- Unused storage containers 7'-40'
- NH 130 manure spreader
- Oxbo CP100 sweet corn picker
- Hummert 90' x 144' greenhouse
- 40+ unused skid steer attachments
- 15+ Unused 3-pt tillers, 4'-7'
- Grader blades 5'-9'
- Five Star 5' 3-pt. box blade
- 3-pt log splitters
- 3-pt & pull type discs
- 3-pt finish mowers
- 3-pt brush hogs 3.5'-8'
- 3-pt post hole diggers
- 3-pt cultivators
- JD 1008 10' brush hog
- MF 3-pt. 7' sickle mower
- 2-20' pull type pasture harrows
- Bear Cat 12' pull type mulcher
- MF 12 square baler
- JD 213 13' grain head
- Flatbed farm wagons & gears
- Paul mod. SP-3 livestock scale
- Brent Grain Train 650 grain wagon
- NH 477 7' haybine
- 3-pt. plows
- Woods 5' 3-pt core aerator
- Powder River cattle squeeze chute
- 16' hay elevator w/ motor
- IH 2-10" trip plow

- Onan & Winco PTO generators
- JD 915 5-shank V-ripper
- Ant. high wheel horse drawn wagon
- JD 7000 4-row planter
- Ant Case horse drawn sickle mower
- KD 5500 loader w/ bucket
- MF 1163 6-row corn head
- CIH 8330 9' haybine
- Braud 524 grape harvester
- Rhino SE10A 10' pull type brush hog
- JD 220 20' grain head
- Woods GTC40 40" 3-pt. tiller
- JD 643 6-row corn head
- Bechthold's Trim-N-Prune vine hedger
- Weed Badger 2550 3-pt vineyard mower
- Binger Seilzug 3-pt vineyard leaf puller
- Envirofarm ATV vineyard mist sprayer
- Art's Way 5165 grinder mixer
- New Holland 1411 10' 4" discbine
- 5.5' skid steer tooth bucket

Shop Equipment & Miscellaneous

- Unused portable restroom & shower units
- 10+ Unused workbench toolboxes
- Unused Echo CS-303T chainsaw
- Stihl MS193T chainsaw
- Husqvarna 61 chainsaw
- Troy-Bilt 5 hp chipper vac
- Bri-Mar 8.5' steel dump bed insert
- Super Tomhawk chipper shredder
- Auto Crane elec/hyd. truck crane
- 1000+ plastic grape trays
- Used excavator buckets
- Steel corral panels
- Unused 28" poly traffic cones
- SpeedAire 60 gal. air compressor
- Miller Spoolmate 200 arc welder
- Miller Millermatic 250X mig welder
- Vintage Ford 900 pedal tractor
- Sokkia DT610 digital survey instrument
- CST Berger DGT10 digital survey instrument
- Torcon DT-100 digital survey instrument
- Stacks of firewood
- Rough cut lumber
- Husqvarna 272XP chainsaw
- Stihl MS291 chainsaw
- Stihl MS180C chainsaw
- Husqvarna 435 chainsaw
- Steel bale feed rings

More items listed at SchneiderAuctioneers.com

SCHNEIDER
 Auctioneers LLC
 573-834-2207 • 573-291-8075
www.SchneiderAuctioneers.com

ABSOLUTE ONLINE AUCTION

PUBLIC AUCTION: Auction Close Date is November 28, 2022 at 6pm. County Road 333 & 326, Fulton, MO, 65251

Preview dates for viewing are Friday, November 11, 2022 (3-5pm) & Friday, November 25, 2022 (3-5pm).
*Bring orange gear to walk around the property since we are in hunting season.

Directions: From Bus Hwy 54, Take the Missouri H exit, Continue on State Hwy H/Missouri H, Turn right onto Co Rd 333, Drive to Co Rd 326, Watch for Signs!!! 99.64 acres just off County Road 326 & 333!

Features of this property include mostly gently sloping/level acreage with a pond previously in crops. The property has been ideally terraced as well and is located just across the street from Mark Twain National Forest! If you're looking for a building site or a mini farm this would also be an ideal country location for your dreams to flourish. Acreage can be purchased as a whole or in separate tracts (see layout), top purchase price will prevail and will be announced by Auctioneer by final fall of the hammer. (Mock drawing is estimated lines, final survey drawing to prevail.)

- Tract 1 (16.82 Acres)** - Pasture
- Tract 2 (16.82 Acres)** - Pasture (Grain Bin not included)
- Tract 3 (16.82 Acres)** - Pasture mostly/some Wooded
- Tract 4 (22.50 Acres)** - Pasture/Wooded, Pond, Concrete Slab (Grain Bin not included)
- Tract 5 (7.37 Acres)** - Pasture
- Tract 6 (11.93 Acres)** - Pasture
- Tract 7 (7.37 Acres)** - Pasture
- Tract 8 (99.64 Acres)** - Pasture, Wooded, Pond, Concrete Slab



Real Estate Purchase Terms: Buyer pays \$5,000.00 non-refundable down payment the day of auction, balance due at closing within 30 days. Real Estate sells "As Is, Where Is". Taxes will be prorated. Buyers must have financing pre-approved in order to bid on the real estate or be a cash buyer. If you have any questions about your financing please contact Suzanna at 573-592-1939. 3% Buyers Premium applies to the final purchase price. Bidders can place max bid amounts instead of only bidding the current sales price. This property is being offered as an absolute auction to the highest and best bidder! May be purchased as a whole or in separate tracts, highest bid shall prevail for division.

Standard Disclaimer: The property is also listed on multiple MLS systems with Suzanna Wolfe, REALTOR and may be sold prior to auction. Any 'Listing Price' on the web or apps is only a suggested sales price; current bid on the auction will be prevailing sales price. All announcements the day of auction supersede printed/MLS/advertised material until the Final Fall of the Hammer which will be emailed to winning bidders.

The Patricia A. Schwab Irrevocable Trust - SELLERS



573-592-1939 • Serving Central MO Since 1999
www.WolfeAuctionRealty.com

For Complete Terms, Listing, Catalog, & Bidding
Visit www.WolfeAuctionRealty.com

Need Help Bidding? Contact the Auction Team at 573-592-1939
No Computer? No Problem! Come to one of our preview days and we can help you bid!

HUGE CONSTRUCTION MATERIAL AUCTION

SATURDAY NOVEMBER 12, 2022 10:00 AM

LOCATED: 150 CHURCH RD, BRANSON MO

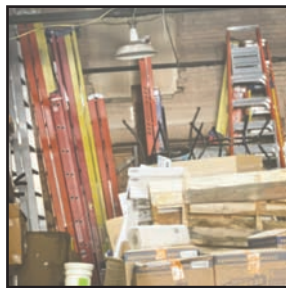
From Hwy 65 & Hwy F go East on Hwy F to Outer Rd then South on Outer Rd to 150 Church Rd

FOR PICTURES SEE WEBSITE OR AUCTION ZIP.COM

NEW AND USED CONSTRUCTION MATERIAL

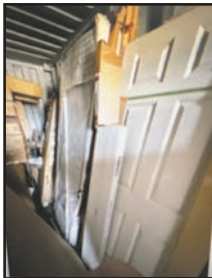
NEW LIGHTING, PARK HARBOR PHPL6228 DE SOTO 8 LIGHT 25-1/4" WIDE CHANDELIER—WEAVER 60W 2 LIGHT MEDIUM E-26 OUTDOOR CEILING FIXTURE—PARK HARBOR PHEL1204 NOTTOWAY 12" WIDE 2 LIGHT FLUSH MOUNT OUTDOOR CEILING FIXTURE—BRADHURST 14" 15W LED PENDANT W/RAIN GLASS—BEECH LANE 100W 15" 1 LIGHT MEDIUM E-26 WALL SCONCE—GREAT BRIDGE 100W 5 LIGHT MEDIUM E-27 INCANDESCENT CHANDELIER—WOOD BERRY 9-3/4" 100W 1-LIGHT TALL OUTDOOR WALL SCONCE W/SEEDY GLASS SHADE—PARK HARBOR ENRIGHT SINGLE LIGHT 19-7/8" WIDE INTEGRATED LED PENDANT—BEECH LANE 60W 11-1/4" 1 LIGHT MEDIUM E-26 WALL SCONCE—SCARBOROUGH 10X6" 100W 1 LIGHT MEDIUM E-26 VANITY FIXTURE—WEST ROCK 100W 13-5/8" 1 LIGHT MEDIUM E-26 WALL SCONCE—T5 FLUORESCENT CABINET LIGHT—LITHONIA LIGHTING OWP LED OUTDOOR INTEGRATED LED MOUNT WALL PACK—LITHONIA LIGHTING MINI FLOOD LIGHT W/TWO 13 WATT 2700K COMPACT QUAD-TUBE FLUORESCENT LAMPS—LITHONIA LIGHTING 11794 BZ M2 LIGHT CONCEPTS 4 LIGHT SHEFFIELD BATHROOM BAR LIGHT—100W METAL HALIDE LAMP—LARGE AMOUNT OF POTTERY BARN & ALLEN & ROTH LIGHTING—LED TRIM LIGHT KITS—LARGE LOT OF TUBS & SHOWERS NEW—60"X30" SITKA ACRYLIC ALCOVE SOAKING TUB—WHITE ARCHER 66"X32" ALCOVE SOAKING ACRYLIC BATHTUB—KOHLER 72X36 ALCOVE BATH W/INTEGRAL APRON & RIGHT HAND DRAIN—MAJORA 7242 SKIRTED BATH—MANY TUBS & JACUZZI'S DIFFERENT BRANDS—60"X42" SINGLE THRESHOLD SHOWER BASE W/ CENTER DRAIN—SEVERAL CAST IRON SHOWER BASES & TUBS—LARGE AMOUNT OF SHOWERS--TOILETS—VARIETY OF VESSEL SINKS—LARGE

AMOUNT OF PLUMBING, FAUCETS, SHOWERS, ETC—MANY DOORS OF VARIOUS SIZES & SHAPES—NEW COLUMNS—LARGE AMOUNT OF SOLID OAK CABINETS NEW IN BOX—VANITIES, OAK & WHITE—HUGE LOT OF MOLDING & TRIM—MIRRORS—NEW AIR CONDITIONERS W/ HEAT—NEW ZLINE 30" RANGE, GAS 32X31X37-12" INDUCTION BUILT IN VITRO CERAMIC SURFACE MODULAR ELECTRIC COOK TOP, BLACK—NUWAVE DOUBLE PRECISION INDUCTION COOK TOP BURNER, SEVERAL AVAILABLE—VARIOUS HARDWOOD FLOORING—GRAVITY VENTILATOR, 54" BLADE DIA., 60-1/2"X60-1/2" BASE--SEVERAL MID SIZE REFRIGERATORS—ROOLS OF NEW CARPET—RETIRED HVAC SYSTEMS, ALL WORKING WHEN THEY WERE UPDATED—25 PLUS METAL RETIRED 36" ENTRANCE DOORS—NEW MATTRESSES & FURNITURE, NICE—ARMOIRES—FURNITURE, MATTRESSES, BEDS, HOUSEHOLD ITEMS, LIKE NEW—SEVERAL CONTAINERS OF DOORS, TOOLS, CONCRETE MIXES, HARDWARE, ETC—1000' SPOOL CAT6 COPPER CABLE CLUE-GE—HUGE LOT OF MISC HARDWARE, SCREWS, NAILS—AIR FILTERS—MANY CONCRETE ADDITIVES—BOXES OF VARIOUS SIZE WEDGE ANCHORS—SEVERAL LADDERS DIFFERENT SIZES ALUM & FIBERGLASS—1.6 HP CONTINUOUS 225 PSI, 15 GAL COMPRESSOR—GALLONS OF INSECT SPRAYS & YARD & GARDEN CHEMICALS—PALLET OF MULCH—PALLET OF POTTING SOIL—4 PLUS ROLLS OF LANDSCAPING EDGING—INDUSTRIAL CARPET SHAMPOOER—ZEP FLOOR CLEANER, GRANUALS, 125 LB, DRUM FLOOR CLEANER—HUNDREDS OF CASES OF HAND SANITIZER—PLAYGROUND EQUIPMENT—25 PLUS CASES FOAM CUPS—100 CASES QUALITY SQUARE PLASTIC 3 DIVIDER PLATES, PACKED 500 PER CASE—GENPAK 48 OZ CLEAR HINGED DELI CONTAINERS, 100/CASE, 25 CASES — SO MANY MORE ITEMS TOO NUMEROUS TO MENTION



AUCTIONEER NOTES: WE ARE UNABLE TO LIST EVERYTHING THAT WILL BE IN THE AUCTION BECAUSE MOST IS IN STORAGE OR NOT ON SITE. IF YOU ARE A BUILDER, LANDLORD, OR JUST A HOMEMAKER WANTING TO DO SOME REMODEL PROJECTS, DON'T MISS THIS ONE!! BRING YOUR TRUCKS AND TRAILERS YOU WILL NEED THEM. EVERYTHING SELLS TO HIGHEST BIDDER!!

ANNOUNCEMENTS MADE ON SALE DAY WILL TAKE PRECEDENCE OVER ANY OTHER PRINTED MATERIALS. NOT RESPONSIBLE FOR ACCIDENTS OR LOSS OF ARTICLES ON OR NEAR SALE SITE.



MELTON AUCTION & REALTY CO LLC



meltonauctionrealty.com | [roger@](mailto:roger@meltonauctionrealty.com)
 Roger Melton | Nixa, Mo | 417-830-0153 or 417-725-1801
 Brad Cole | Nixa, Mo | 417-840-2950
 Tanner Foster | Galena, Mo | 417-840-5519

6019726

PUBLIC AUCTION

SATURDAY, NOVEMBER 19 @ 11:00 A.M.

Directions: BUNKER, MO - From Salem take Hwy. 32/72 east, take Hwy. 72 to Bunker, go through Bunker to Hwy. KK, follow Hwy. KK shortly to Co. Rd. 856, follow to 2510, go through gate and follow field road to site. Watch for signs.

SOLD MY FARM - ITEMS MUST BE REMOVED BY NOVEMBER 24.

LARGE/ROLLING EQUIPMENT - TRACTORS & ATTACHMENTS MISC. EQUIPMENT & TOOLS - STEEL ITEMS - ETC.

International Dozer w/Dual Rippers
Case 590 TLB w/Grapple Bucket
CTL Bobcat T300 w/Smooth Bucket
@ CNH Powerstar 100 Tractor
International 4900 2.5-Ton High-lift-Dump
Ford 2.5-Ton Dump - Kubota RTV 900
2, Yamaha Kodiak ATVs - 7' Rake
Brown Disc Harrow 6' 4"
Brown 684 7' Rotary Cutter
Brown 484 7' Rotary Cutter - Road Boss Grader 8'
Pallet Forks - 2 Shipping Containers
2, 500 Gallon Fuel Tanks - 2 Misc. Small Fuel Tanks
2-Man Lift Work Basket
Scaffolding Frames, Braces & Wheels
Galvanized Corrugated Pipe, 2/20'
2 Fuel Tank Stands
Hydroponic Grow Cabinet, Lights, Fertilizer
Lincoln Welder w/Ranger 250 Generator

Hobart Ironman Shop Welder - 10" Table Saw
Grizzly 10" Shop Table Saw w/Fox Fence
6" Joiner-Planer - 13" DeWalt Planer w/Stand
Delta Band Saw - 2, 4" Cabinet Shop Vacs
Stihl Combi Power Head w/Trimmer
Milwaukee Portable Band Saw - 8" Grinder
Makita 1" Drive Impact Driver w/Socket
2 Husky 455 Rancher Chain Saws
Delta Floor Standing Drill Press - Bench Vise
4x8 Shop Table on Casters
Chicken Coop on Wheels
10-Ton Porta Power, Like New - Electrical Conduit
Chicken Feeders - Work Tables - Router Table
2-Burner Propane Heater - Kerosene Heater
30 Gallon Deer Feeder - 12 Volt Diesel Transfer
2 Climbing Deer Stands - 2 Pickup Tool Boxes
2 Shop Fans - 3 Shelving Units
Concrete Mag Float, 3 Extensions

Concrete Vibrator, Brand New
100 Amp Electric Panel - 20 Panel Breakers
Shop Vac - 3, 2-Man Deer Stands
Craftsman Toolbox - 110V Window AC
6, 55 Gallon Food Grade Barrels
16wx31 Steel Beams - 26 Gauge Steel Decking, 3x20
Steel Plate, Flat Bar, Square Tube - Joists
30' Travel Trailer, Scrap

AUCTIONEER'S NOTE: A loader will be available, items operational and good quality. See you there! - Tom



OWNER: JERRY CUTRONA

ANNOUNCEMENTS AT AUCTION TAKE PRECEDENCE OVER PRINTED MATTER

WULFF AUCTION

TERMS: CASH OR APPROVED CHECK - I.D. REQUIRED
NOTHING REMOVED UNTIL SETTLED FOR

Licensed Appraisals

2334 Highway K, Salem, MO 65560

AUCTIONEERS:

Col. Tom Wulff • John Wisdom

Cell: 573-247-3884 • Cell: 573-247-9563 • Home: 573-729-8476

Clerk: Tracy Strange Cashier: Nancy Inman

See Wulff Auctions at www.thesalemnewsonline.com/auctions



RAIN OR SHINE OWNER & AUCTION PERSONNEL NOT RESPONSIBLE FOR ACCIDENTS AT SALE SITE

ESTATE AUCTION

Friday, November 11th, 2022 ~ 10:00 AM

LOCATION: 500 Barrett, Walker, MO; GPS Will Get You There (Watch For Signs)

Auction For William Jeffery



Over 80 Cars & Trucks, Some Running, Some Not, Also Some Classic Antique

2010 Honda Civic, 1998 Ford Contour, 1992 Dodge Dakota, 2004 BMW 74SL, 1996 Dodge Ram, 2009 Chevy Traverse, 1959 Dodge D100, 2001 GMC Envoy, 1995 Chevy Cab Truck, 1998 Cab Chevy, 1994 Ford Ranger, 1994 Dodge Spirit, 1990 Nissan Truck, 1982 Chevy Truck, 1970's Ford F700 With Dump Bed, 1970's Ford Truck, 1979 Chevy Van (Box Truck), 1973 Chevy C20, 2004 VW Jetta TDI, 2000 Impala, 2000 Pontiac Grand Prix, 1992 Astro Van, 2001 Town & Country, 1968 Log Loader Grapple Truck, 1992 Chevy C1500, 1998 Chevy K2500, 1994 Chevy K1500, 2001 PT Cruiser, 1997 Chevy S10 Blazer, 2003 GMC Envoy, 2000 Ford Taurus, 1989 Chevy K2500, 2003 Ford Escape, 2003 Chevy Venture Van, 2006 Cadillac CTS, 1960 MGA 1600, 40's International Big Flatbed Truck, 1992 Buick Regal, 1987 Ford F250, 1978 Chevy C30, 1985 Chevy K10, 1985 Chevy Truck, 2001 Jeep, 1981 Chevy Scottsdale, 1996 Dodge Ram, 1993 S10 Blazer, 1998 Buick Park Avenue, 2003 Ford Windstar Van, 1982 Chevy Truck, 1995 Dodge Stratus, 1998 Ford Van/

Truck, 1979 GMC 7000, 1975 Ford Ranger, 2001 Honda Accord, 1989 Buick Century, 1979 Trans Am, 1979 Firebird, 1970's Ford F700 HIAB Speed Loader, 1995 Chevy, 1982 GMC 7000, 1987 Plymouth Reliant "K", 1981 Chevy Short Bed Step Side, 2004 Chevy Trail Blazer, 1990 Lincoln Town Car, 2000 Dodge Ram, 1982 Chevy 1 Ton Flatbed, 2001 Dodge Ram, 1994 Ford Ranger, 1997 Chevy Malibu, 1996 Honda Van, 1990 Camaro Iroc Z28, 1998 Dodge Ram, 2003 Trail Blazer, 2003 Chevy Cavalier, 1966 Chevelle, 1966 Buick, 1972 Loadstar, 2000 Firebird, 1971 IH Pickup, 1962 Mercury Comet, 1951 GMC Suburban, 1997 Pontiac Bonneville

Tractors, Trailers, RV & Scrap Iron & Misc Items

WC45 Allis Chalmers, WD45 Allis Chalmers With Loader Bracket, Case Tractor With Loader, 21 Ft Gooseneck Double Axle Trailer, 21 Ft Gooseneck Triple Axle Trailer, 16 Ft Double Axle Flatbed Trailer, Double Axle Flatbed Trailer, Winnebago RV, Steel Flatbed Only, Ford Pickup Bed Trailer With Topper, Scrap Aluminum Boat With Trailer, Scrap Iron Pieces & Piles

For Information On Vehicles Contact William At 417-321-2795.



Auctioneers Note: It Is An Honor To Be Conducting This Auction For The Jeffery Family. If You Are A Car Collector Or Looking For A Vehicle Or Even A Scrap Iron Buyer You Do Not Want To Miss This Auction. There Are Over 80 Cars, Trucks, Tractors & Trailers To Choose From. Plenty Of Iron Here!!! There Will Be No Particular Sale Order As All Items Are In 1 General Area. Bring Your Trailers & Loaders To Be Prepared To Buy. See Ya There!!!

Terms: Cash or check with proper ID. Now accepting most major credit cards. Nothing removed until settled for. Statements made the day of sale takes precedence over printed material. Everything sold as is where is. Not responsible for accidents. Restroom available. Concessions Provided. Check our website for upcoming auctions and for additional pictures!!



NANCE AUCTION SERVICE

No Matter How BIG or small, We Do Them All!!!



Col. Bill Nance 417-214-0093 In God We Trust Philipians 4:13 Sean Beazley 417-247-6754

Sat. November 19 **Moving Auction**

Beginning at 9:30 A.M.

Located at 25998 Hwy N, Lebanon, MO 65536. Directions: Take 32 East from Lebanon 8 miles to Hwy N, go left on N 4 miles to Auction site on the right. Watch for Auction today signs.

Tractor & Construction Equipment & Trucks

963 Cat loader dozer, rebuilt final drives both sides, 50% undercarriage; Bobcat, 1999 331 mini excavator; 2010 M9540 DTC Kubota tractor with ultra cab, LA1353 loader, 4x4, AC/heat; 1965 Chevy dump truck; Terex SS842, 42' reach, 8000# lift, 95% rubber, air tires, 4000+ hr, JD diesel; 2-Toyota pickups; 3010 Kawasaki mule, 4x4, diesel, all new drivetrain and axles; 90" John Deere QA bucket; 84" Bobcat QA bucket; Scaffolding lots of sets and acc; 72" box blade frontier, with 6 rippers, 3pt; 20' Blair cattle trailer; 18' Pontoon boat w/ 48Hp Evinrude & trailer; Misc. Building Materials; 2015 Load Max 32' 20,000 lb axles, Hydraulic Dovetail Gooseneck trailer;

Hay & Farm Equipment

8' 3pt disc; 12' JD wheel disc; 12' JD cultmulcher; 4 row JD cultivator 3 pt; 4 row Allis Chalmers corn planter, extra plates, 3 pt; 15' Woods Batwing; 10' Bush hog, brush cutter; New Holland, hay invertor/accumulator; 451 Sperry & New Holland 7' 3 pt sickle bar mower; 2 sets of ATV ramps; 3 pt 8 wheel hay rake; 3 pt transplanter with water tank; JD 6 ton gravity wagon; 5 ton gravity wagon; 8 panel coral set; 3 pt hopper spreader, like new; ATV 50 gal. sprayer; 16 panel coral set with head chute; Portable squeeze chute; Allen gate and panel-Coral system Includes: 26-10'x6' panels, 4-10' gates, pal-pation gate, sweep system, 4' walk thru, 1 sliding gate, 6'x8' super panel; 20'x30' Carport/Garage; 110 4x5 grass hay; ICF concrete basement forms 13" x 16" x 48" 99 ea. 44 corner blocks; Oliver Super 55 Tractor, runs;

Shop Tools, Equipment & fencing

Miller Dialarc HF welder, needs work; Heavy duty table saw; 3 phase 220/440 Hydraulic unit w/ 60 gal. oil tank; Shelving; 12" DeWalt miter saw w/ stand; Kobalt job box; Craftsman tool cabinets; Stanley fat max tool boxes; Craftsman arc welder, electric; 2 hand dollies; Tile saw; Hobart wire welder 135; Floor stand drill press; 2-Welding tables; 12 ton press; Electric 7" grinders; Thermal arc pak 5XR plasma cutting system; Carolina SH 4000 lb mobile engine crane; Snap-On hand tools; Mac wrenches; Acetylene & oxygen torch set w/ cart; Drywall stilts; 30' Aluminum walk board; Drywall square; 3 New 220' rolls of hytensol woven wire 48" sheep fence; Lots of T-posts; 7-24'x3" heavy wall pipe; Spinning Jenny w/ hytensol wire; 200+ step in posts; 10 reels w/ portable electric fencing; x12i stafix electric fence; Pickup truck sheep/goat cage;

Bows & Guns & Hunting Supplies

Remington model 770, 30-06 black poly stock, w/ Redfield revenge 4 plex 4-12x40 scope; Ruger 10-22; Tree stands; Assortment of trail cameras; Ranger 101-6, 12 gauge double barrel; Climber stand; Trapping supplies; Parker buck shot, youth, compound bow 18-28" draw, 30-40#; PSE Heritage Sequoia, long bow 68", 60#, 28" draw w/ quiver and 5 arrow

Household-Garden-Lawn & Chicken Equipment

Troy Bilt riding lawn tractor, 48" cut; Pull behind cart; Troy Bilt Tiller, Horse with New Honda Engine; Troy Bilt Tiller, Pony, like new; DR Weed Whacker; Lots of hand tools; Pull behind grass and leaves collector; 2-Poly 14T Martin Houses and Poles; Pipe waters; Chicken Crates; 20 x 40 Portable Chicken Coop w/ roll up sides, Canvas top and end, 500 Bird Capacity; Lots of bucket feeders, plastic and metal; New propane brooder heater; Egg washer, Antique; Triple stainless sink with Faucets; Whirlpool electric range; Maytag washer & dryer; 2 sets of double tubs; 6' stainless counter; Frigidaire glass top electric range; Propane heater; Propane double burner cooker; 295/70/R17 Yokoyama tires; Leather saddle, needs oil; Many more items too numerous to mention.

The Troyer's will offer the above items of good quality for your consideration at public Auction. Many more pictures available at www.auctionzip.com. Lunch will be available by the local Mennonite ladies of the community. Hope to see you at the auction.



Owners Norman & Barbara Troyer
Auctioneers
Larry Martin, Loren Martin
& Mel Yoder



Thanks, Larry

For more auctions go to www.auctionzip.com ID # 47012

Terms: Cash or check with ID. Not responsible for accidents. Statements made day of auction take precedence over printed material

YOUR Real Estate Auction Specialist



Bob Kollmeier CAI, CAGA
Auctions/Appraisals/
Real Estate • 417-882-5664



AUCTION

Saturday, November 19, 10:00 AM • 20806 Butler Rd., Lebanon, MO

- Trucks, Tractors, Equipment, IHC Scouts, 4 Wheeler, SeaDoo & Misc
- Shop & Hand Tools, Cattle Pens & Panels • 40' Container, Boat, Guns & Saddles

FOR FULL LISTING AND ALL PICTURES VISIT BOBKAUCTIONS.COM OR AUCTIONZIP.COM

DIRECTIONS: From I-44 & Hwy 5 in Lebanon, MO go S on Hwy 5 to Hwy C then W on Hwy C to Hwy PP then S on Hwy PP to Butler Rd. then E on Butler Rd to auction. Watch for signs!

AUCTIONEER'S NOTE: The following is only a general listing of what we will be selling. Due to the volume of merchandise to be sold we will be running 2 auction rings part of the day. Starting with tools at 10AM sharp.

TRUCKS, TRACTORS, EQUIPMENT, IHC SCOUTS, 4 WHEELER, SEADOO ETC. Ford 7710 Tractor w/3,721 hrs. cab & air, 4x4! INT. Farmall 300! IHC Farmall cub w/belly mower! 2003 GMC Sierra Quadra Steer 4 door, 4x4 pickup! Case 530 backhoe w/ 12" & 24" buckets! 1976 Chevy custom deluxe 30 1 ton pickup w/flatbed! 1975 Ford F250 longbed 4x4 pickup! 3 pt posthole digger! 8' roller! JD25A tank! Vermeer Mod 604 series L Baler! (2) Bail spikes! 16' stock trailer! 8' brush hog! 1960 IHC Scout AWD hard top (needs restored)! 1979 Int Scout Rallye Mod V8 4x4 standard trans (rare)! JD 1508 15' brush hog! 3 pt 7' blade! 3 pt seeder! Sea Doo Bombardier w/trailer! Artic Cat 4 wheeler! Honda 160 Scrambler motorcycle! Honda 160 CB motorcycle! 2 old trailers! LOTS MORE EQUIPMENT NOT MENTIONED!

SHOP & HAND TOOLS, CATTLE PEN & PANELS, MISC. Several lg & sm tool boxes! Lots & lots of misc hand tools incl sockets, wrenches, pliers etc! Craftsman 2 sp band saw! Craftsman floor mod drill press! Parts cleaner! Acetylene tanks & torches! Ant vises! Garden tools! 1965 Johnson 15hp outboard motor! Come alongs! Chains! Chainsaws! Lg air compressor! Air tanks! Grinders! Lot air tools! Dollies! Weedeaters! Fuel tanks & stands! Ramps! Hay spikes! Miller welder! Cattle working equip incl Palco squeeze chute & head gate! Cattle pens! Over 70 cattle panels! Metal barrels! Lot old lumber! Old signs! Radio flyer wagon! Wash tubs! Milk cans! Unicycle! Set of lockers! Stop sign! Metal chairs! Ant motorcycle frame! Snow sleds! Bikes! Standard Oil metal barrel! Scrap metal! T posts! Wood barrels! Old boxes! 8' ant showcase! Lg ant ice box! 2 ant oak file cabinets! Fishing tackle! Toys! Oil cans! Cash register! Animal traps! Cedar chest! Dog pen! Lot misc household & old furniture!

40' CONTAINER, BOAT, GUNS, SADDLES & LEATHER SEWING MACHINE 40' container! 1970 speed boat motor & trailer! (2) 16' Gruman canoes! 2 old paddle boats (need work)! 14' aluminum fishing boat, motor & trailer!

100. Henry 22 cal lever action **101.** Winchester Model 1890 22 WRF cal **102.** Marlin Model 60 Stainless 22 cal **103.** Remington Model 770 300 win mag cal **104.** Winchester Model 94 Legendary Frontiersman Commemorative 38-55 win cal **105.** Bolt action military FNA-B Ser# RA84949 **106.** Crossman Model 140 pellet rifle **107.** Belgium Browning mag vent rib SER# 14056 **108.** Belgium Browning 20 ga vent rib SER# 83594 **109.** Belgium Browning sweet 16 vent rib **110.** Mossberg Model 835 12ga **111.** Savage Model 1921 12 ga **112.** Browning light 12 12 ga Japan **113.** Winchester Model 1300 12 ga **114.** Winchester Model 12 12 ga **115.** Remington Model 870 TB 12 ga **116.** Ruger new Model single six 22 cal w/holster

Over 10 Vintage western tooled leather saddles in good shape! Chaps! Saddlebags! Halters! Saddle pads! Commercial Singer leather sewing machine!

TERMS: CASH, credit w/3% convenience fee, personal or company checks accepted only if known by us or w/a bank letter made to RLK, INC., No Exceptions! All items paid for day of Auction! All items sold As Is Where Is.



SL-0000426478

Bob Kollmeier
AUCTIONS
 APPRAISALS & REAL ESTATE
417.882.5664



RICHARD JEAN
 AUCTIONEER
 417.299.8401



RUSS SMITH
 AUCTIONEER/SET UP MANAGER
 417.844.0205

BUFFALO LIVESTOCK MARKET LLC



276 Hwy 32 W., Buffalo, MO

November 5th, 2022

Receipts: 994

Feeder Cattle Steady to \$5 Higher. Bulls and Cows \$1-\$3 Higher.

REPRESENTATIVE STEERS

- 300-400 @ 175.00 to 202.00
- 400-500 @ 170.00 to 201.00
- 500-600 @ 165.00 to 198.00
- 600-700 @ 161.00 to 182.00
- 700-800 @ 160.00 to 168.00
- 800-900 @ 154.00 to 161.00

REPRESENTATIVE HEIFERS

- 300-400 @ 140.00 to 170.00
- 400-500 @ 145.00 to 190.00
- 500-600 @ 140.00 to 170.00
- 600-700 @ 140.00 to 170.00
- 700-800 @ 130.00 to 140.00
- 800-900 @ 120.00 to 130.00

FEEDER BULLS

- 300-400 @ 160.00 to 196.00
- 400-500 @ 155.00 to 195.00
- 500-600 @ 140.00 to 163.00
- 600-700 @ 130.00 to 150.00
- 700-800 @ 120.00 to 139.00
- 800-900 @ 115.00 to 128.00

HOL & HOLX STRS

- 300-750 @ 80.00 to 116.00

STOCKS COWS

- Bred Cows 775.00 to 1275.00
- Cow/Calf Pairs 875.00 to 1400.00

SLAUGHTER BULLS

- High Yield 94.00 to 102.00
- Low Yield 75.00 to 90.00

SLAUGHTER COWS

- Fleshy 72.00 to 85.00
- Med Flesh 67.00 to 78.00
- ThinFlesh 57.00 to 72.00
- X Thin Shelly 50.00 Down

Fat Fleshy Unweaned & Plain Quality Cattle are below this market!

DON'T FORGET: PRE-VAC SALE is November 19th this month!!

Cow Sale • November 15th
Taking Consignments now!!!

MON-WED MARKET REPORT

Listen to KJEL 103.7FM • Lebanon or KY00 99FM • Bolivar

VIEW OUR SALES AT CATTLEUSA.COM

CALL FOR TRUCKING OR ON-FARM VISIT

Lyle Caselman • Owner-Manager
417-345-7876 • mobile 417-533-2944
Leon Caselman • Owner
417-345-4514 • mobile • 417-588-6185

LAKE OF THE OZARKS FALL SPECIAL:

Lots \$4,950 - \$125 down, \$69 per month. Beautiful trees, free lake access and boat ramps, lots are a short distance from the lake, no credit checks, owner financing, immediate possession or own for investment. Also: acreage tracts. Missouri conservation boat ramp with covered dock and rest rooms. **Prices good through November 21, 2022.** Hwy 135 between Stover and Sunrise Beach, MO. Take Lake Road 135-12 to the Ivy Bend Land Office. Closed Tuesdays and Wednesdays. Call anytime. 573-372-6493.

OLD IHC TOOL BOX: With can holder. 636-932-4429. Hermann.

Starnes Auto LLC
22115 Rt. 66 • Lebanon, MO 65536
417.718.2707 Cell
417.588.3159 Office
www.starnesauto.com

Worry-Free
AUTOMOTIVE PAINT & BODYWORK

Our trained experts and specialized equipment get you the highest quality body repair and paint solutions.



WE DO ALIGNMENTS!

IMMEDIATE OPENINGS FOR JOURNEYMAN ELECTRICIANS:

\$35+ in wages, \$53+ total package. Fringe benefits include: Sick, Vacation, Holiday Pay, Health Insurance, and Retirement. Job is at Fort Leonard Wood Army Base. Job has 1 year + left. Job is currently working 4-10s & 8. 5 years commercial/industrial/hospital experience needed. Conduit bending & installation, wire pulling, lighting and receptacle installation. Drug test and background check required. If interested, call: (417) 983-5897 Ask for Kevin.

HORTON CROSSBOW: \$125. 573-247-2480. Salem.

MID MISSOURI STOCKYARDS
REGULAR SALE EVERY THURSDAY 11AM
WATCH OUR WEEKLY SALE IN REAL TIME ON DVAUCTION.COM
For Farm Visits, Market Updates, or Trucking
Call Zach Cox 417-777-1320
Dan Romine 573-578-4939
**Competitive Buyers!
Competitive Commission!
Competitive Market!**
Barn: 417-532-9292
I-44 • Exit 123 "just outside of Lebanon"
17505 Route 66, Phillipsburg, MO 65722
For weekly market updates, visit us at www.midmostockyards.com

MALTIPOO PUPPIES & REGISTERED DACHSHUND PUPPIES: 573-247-6273. Salem.

2 USED SIDE X SIDE TIRES: 26x11R12, 25% Rubber. Pair \$50.00. 636-932-4429. Hermann.

SHIHPOO PUPPIES: Wormed, vaccinated, family raised. 845-702-4864. Fordland.

0% for 4 Years
HEATMOR Outdoor Wood Furnace
as low as **\$238** per month
HEATMOR MIDWEST
Licking, MO 65542 • 573-674-2962

SINGER FEATHERWEIGHT 221 PORTABLE SEWING MACHINE: With travel case. Excellent working order & responsive foot pedal. \$250 Firm. 913-710-2554. Tunas.

FERGUSON OR FORD: Bolts, pins, stabilizer brackets, spin out bolts, etc. \$100 OBO. 636-932-4429. Hermann.

BARNETT RAPTOR CROSSBOW: \$125. 573-247-2480. Salem.

NEW ID MANURE SPREADER: \$1,500. 573-247-2480. Salem.

ENGLISH SHEPHERD PUPPIES FOR SALE: Some bobtail, some not. 573-760-5157.

SLIGHTLY USED PUZZLES: Will sell or trade. 417-818-3469. Strafford.

WEATHERED BARN WOOD SIDING: 10" wide. 573-729-7226. www.pineridgerustic.com Salem.

1500 VINTAGE WRISTWATCH DIALS: \$100. 573-764-3517. Call in PM.

Your Trusted Choice for Plumbing & Electrical

Hickory Plumbing & Electrical

Honest and Affordable Services

New Homes, Remodels, Repairs
25 Years Experience
Free Estimates

Call Shane or Dave
417-415-2928



KEEPING YOU SAFE ON THE ROAD

with brands like:

NEXEN TIRE **YOKOHAMA**

ATTEBERRY MFA TIRE & AUTO CENTER

333 E. BROADWAY • BOLIVAR, MO
DUANE ATTEBERRY • 417-326-6286

WANTED MAYTAG RINGER WASHING MACHINE: Any condition. 417-746-0253. Norwood.

GERMAN SHEPHERD PUPPIES: Excellent bloodlines. Black & Red. \$350. 573-378-4447. Barnett.

FORD TRACTOR 802: Live power, 3 Point 7 Foot Blade. \$2,000. 417-543-1595. Ava.

MATHEWS SOLO CAM COMPOUND BOW: With Case. \$175. 573-247-2480. Salem.

EARN \$60,000/YEAR PART-TIME: In the livestock or farm equipment appraisal business. Agricultural background required. Home study course available. 800-488-7570 or www.amagappraisers.com

TINY HOMES: We gottem 573-881-3283

LOG SIDING: 2X8 Pine/Western Cedar www.pineridgerustic.com 573-729-7226. Salem.

USED MOBILE HOMES: Call David at VILLA HOMES IN ROLLA 573-578-8072. Rolla.

BUYING MOBILE HOMES: Call David at VILLA HOMES IN ROLLA 573-578-8072. Rolla.

Fly Free with AFC.

AFC ALTERNATIVE FLY CONTROL PRODUCTS

KENT

Located in the Heart of the Amish Mennonite Community!
417-345-8600
19 Prairie Lane, Buffalo

Kropf Feeds

Larry Heisel Rentals

Have Rock?

How about 3,500 lbs. of Hammer

Call Larry!

573-779-1500

www.larryheiselequipment.com

Rental Available in 636 or 573 area code

We Deliver!

WE BUY AND SELL
new and used mobile homes

(417) 501-1061

AVERY MODEL A 1947: Unrestored. \$700. 870-405-4655.

2 ALLEN ANTIQUE COMPOUND BOWS: With case. \$50 each. 573-247-2480. Salem.

HONDA PIONEER 1000: 2015 Model, with cab, winch, & raise up windshield. \$9,000. 573-247-2480. Salem.

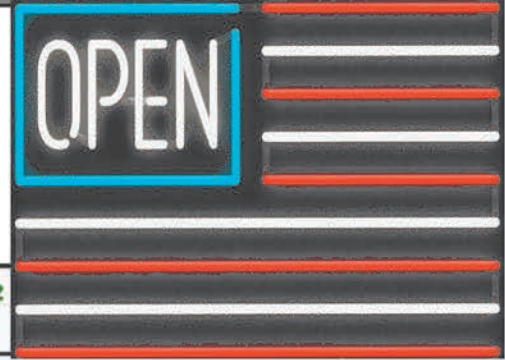
INTERNATIONAL HARVESTER TRUCKS BOOK: The Complete History. Hardback, large book, 208 pages. \$12.50. 417-532-2045. Lebanon. (Leave message and phone number).

REGISTERED HEREFORD & ANGUS BULLS: Home raised, Some Show-Me Select Qualified. 573-701-7828. Belgrade.

HARLEY PANHEAD DISTRIBUTOR: original, chrome + complete. \$125. 573-764-3517. Call in PM.

NEW MOBILE HOME STOCK: Just received (5) new units, they gotta go! 573-657-2176. amegamobliehomes.com

5 GAL. PLASTIC BUCKETS: with lids. \$3 each. 636-239-2695. Washington.



Sale Ends November 30, 2022
 Seymour, Missouri 417-935-4201

Pole Barns & Post Framed Buildings!

Call for free quote, brochure & color chart.
 Other sizes also available.

23'x32'x10' \$7,250 Material Only \$9,090 Labor Included	23'x40'x10' \$8,300 Material Only \$10,600 Labor Included	30'x40'x10' \$10,100 Material Only \$13,100 Labor Included	40'x60'x12' \$17,625 Material Only \$23,985 Labor Included
---	--	---	---



Due to increased demand for our quality product we are currently hiring new barn construction crews. Contact Jeff

NOBODY, BUT NOBODY BEATS OUR PRICES!!!

10 ft. Slider • Engineered Trusses 8' O.C. • 2x6 Treated Bottom Wrap • Screws • 2x10 Top Wrap • 2x4 Purlins • Full 29 Gauge Steel • Plus 3 ft. Entry Door with Lock
 OPTIONS: Sidewall Heights on all Buildings 10', 12', 14' & 16'. Overhead Garage Door. Skylights. Insulation. Wainscoting. Insulated Vinyl Windows. Cupolas. Labor Rates Slightly Higher over 50 Miles from Seymour. Call for YOUR FREE QUOTE TODAY!!!!

PAINTED WHITE, GREEN OR TAN METAL\$99.99	IN STOCK
10' - \$31.70 12' - \$38.04 16' - \$50.72	
MIX & MATCH METAL\$59.99	
8' - \$15.20 10' - \$19.00 12' - \$22.80	
GALVALUME METAL\$79.99	
10' - \$25.40 12' - \$30.48 16' - \$40.64	
GALVANIZED CORRUGATED METAL SOLD OUT!	
8'-\$9.84 10'-\$12.30 12'-\$14.75 16'-\$19.67	

40yr Painted Metal
\$99.99^{Sq}

KNOTTY PINE DOORS
 Starting at
\$164.99

Prices subject to change without notice
LP SMARTSIDE T-5 LAP B GRADE \$43.59^{SQ}

Car Siding!
 1x6 White Pine Siding **79¢** In Ft
 1x8 White Pine Siding **\$1.05** In Ft
 * 4 Profiles to choose from!
 Broken Bundles Add 10¢ Per Ft.

4x8 Sheeting
 Less than full units Add \$1 per sheet
 3/8" Beaded Paneling \$24.99
 5/8" T111 Siding \$28.99
 Paneling \$50LD
 1/2" Plywood \$50LD
 3/4" Plywood \$49.99
 3/16 Pegboard \$12.99

LOTS OF MATERIAL AVAILABLE FOR THOSE IN HOME PROJECTS!

REAL WOOD SIDING
 2x6 Log Siding **\$1.96** In Ft
 1x8 Beveled Cedar from- **99¢** In Ft
 T1-11 Siding from **\$28.99**

NEW PACKAGE HOMES

2x6—16" on center-Exterior Stud Walls
 Residential Roof Trusses-2' on center
 4/12 pitch with 1' over hang
 40 year Painted Metal roofing in 20 Different Colors
 Profile Ridge Vent - Ventilated Ridge Cap
 Vinyl Center Vent Soffit
 Color Matched Metal Fascia & Gable Trim
 2 - 3' 6 Panel Entry Doors
 4 - 3'x4' Vinyl Insulated Windows
ALL FIGURED FOR SUITABLE CUSTOMER SUPPLIED SLAB OR SUB-FLOOR

Shown with Available Options
 Your Choice of either:
 Stock 5/8" T111 Siding w/1x4 Pine Window & Door Trim - or -
 7/16" OSB & House Wrap ready for other finish options

Price for Basic Materials Package (No Labor at this Time)

20x24(480 sq. ft.)	20x32(640 sq. ft.)	20x40(800 sq. ft.)	28x40(1120 sq. ft.)	28x48(1344 sq. ft.)
\$9,490	\$10,839	\$12,339	\$15,129	\$18,729

DECK PACKAGES

Materials Only

8x8.....\$349.00	10x12.....\$699.00
10x10.....\$499.00	10x16.....\$899.00
12x12.....\$899.00	12x16..\$1179.00

QUAKER Now Stocking Quaker Vinyl Windows

2030 \$163.99	3030 \$189.99
3040 \$206.99	3052 \$225.99
3040Twin \$453.99	3052Twin \$497.99

LUCKY DISCOUNT LUMBER
 417-935-4201
 455 State Hwy C • Seymour MO 65746
 www.luckydiscountlumber.com

*Some restrictions apply see store for details. Prices subject to change without notice.

HIKING THE OZARKS BOOK: A Guide to the Area's Greatest Hiking Adventures. \$6.75. 417-532-2045. Lebanon. (Leave message and phone number).

USED DOUBLE-WIDE: \$34,900
WOW!!!! This won't last! 573-657-2176.
amegamobliehomes.com

110 PORCELAIN POCKET WATCH DIALS: Perfect for arts & crafts. \$100. 573-764-3517. Call in PM.

I BUY.....used mobile homes. Call or text 573-338-6250 or email GregS.CDH@outlook.com

5 RED ANGUS BULLS FOR SALE: 13 months old, semen tested \$2,500. Also, 1 older red angus bull. Proven heifer bull. \$2,500. 573-539-2060. Versailles.

FIREARMS: Professional Repair, Restorations and Appraisals. Baron's Gunsmithing. 573-363-5801. Camdenton.

MISSOURI OZARKS BOOKS: Ozark Baptizings, Hangings & Other Diversions \$12.50. Walkin' Preacher of the Ozarks Guy Howard, \$12.50. Missouri Caves in History & Legend \$6.50. Weird Missouri \$10. Missouri Curiosities, Roadside Oddities, \$7.50, Roadside Geology of MO. \$6.50. Fishes of Missouri \$6.50. Butterflies and Moths of MO \$7.50. Bittersweet Book \$10. 417-532-2045. Lebanon. (Leave message and phone number).



Wright Spray Foam Insulators, LLC
Commercial & Residential
Call for **FREE** Estimates!

Ervin Gingerich 417-926-2052
B. Eli Yoder 417-746-4932



Is Your Log Home Starting To Look UGLY?
Professional Staining & Repair
(Log Homes & Wood Siding)

Call **Pine Ridge Rustic**
Log Home Building Supplies **573-729-7226**
www.pineridgerustic.com

WE HAVE MOBILE HOMES:
Instock new arrivals (8) homes, need to go as soon as possible! 573-499-9993.
columbiadiscounthomes.com

TRUE MODULARS: 30 to 60 day delivery available, 3 and 4 bedroom 573-657-7040
chateauhomes.net

RUBBER & LEATHER BOOTS AND 5-Buckle OVER SHOES: Men's 11, Women's 7, some insulated. \$15-\$40 obo. 636-239-2695. Washington.

HEARTH CRAFT GLASS BI-FOLD FIREPLACE DOORS PURCHASED AT FORSHAW'S FIREPLACE:
Antique brass. \$160 obo. 636-239-2695. Washington.

LIGHTLY EXPERIENCED GOLF BALLS: \$3 a dozen. 417-818-3469. Strafford.

LIONEL TRAIN SET: Steam engine, tender, caboose and other car, track, and transformer. \$195. 573-364-7465. Rolla.

I AM LOOKING FOR LAND TO RENT TO GROW WHEAT: I can pay a good rate per acre for land that is fairly level, decent soil and in a 30 mile radius of Marshfield. I am looking for 80-500 acres. 417-741-2288. Marshfield.

1970s KIDS METAL STOVE & FRIDGE:
Nice Lithographic paint, 18" wide x 36" high. \$75. 573-364-7465. Rolla.

CLEAN MATTRESS BOX SPRINGS:
\$50. 417-370-7865. Springfield.

THANKSGIVING DEADLINES

Due to the upcoming holiday, the following deadlines will be observed:

Weekly Trader Thursday, Nov. 24 Edition

Display Advertising Deadline:

Thursday, Nov. 17 at Noon

Classifieds Deadline:

Thursday, Nov. 17 at 4pm

Our office
will closed
Thanksgiving Day

We appreciate your business. Thank you for your continued support.



WEEKLY TRADER
MAGAZINE

417-532-9131 • 800-665-8875
100 E. Commercial • Lebanon, MO
www.myweeklytrader.com



NOVEMBER SPECIALS

10% OFF ANY BUILDING-IN-A-BOX KIT



10% OFF ANY SHOPS BUILT ON SITE*



**Shops built within 120 miles of Pocahontas, Ark.*

Contact us today to discover what we can build for you!

1100 Pace Rd, Pocahontas, Ark. | 870.609.1900
1542 US Highway 60 E, Rogersville, MO | 417.753.8030
www.overmanbuildings.com

Prices valid through November 30, 2022.

Land

For Sale

Dallas Co., Mo • 561.23 Acres +/-



Pending

- 74.99 +/- all open with HWY frontage, cattle handling facilities, three barns, and development potential or single family residence
- 149.27 +/- hunting and grazing property with nice large pond, quality timber, hunting blind, and large hay barn
- 336.97 +/- cattle operation, farm home, MASSIVE views, big bucks, river frontage, and abundance of improvements
- 11 ponds
- One mile of Niangua River frontage
- Huge panoramic views for miles
- 6 water hydrants
- 3 water wells
- Multiple gated entrances
- Beautiful flat bottom ground pastures
- Utility Shed 12'x 22'
- House 24' x 53'
- Garage 20' x 30'
- North Hay Barn 45' x 48'
- Storage Shed #1 12' x 32'
- Storage Shed #2 16' x 24'
- Work Shop 41' x 39'
- Machine Shed #1 30' x 90'
- Machine Shed #2 16' x 40'
- Machine Shed #3 30' x 30'
- Big Barn 38' x 58'
- Wheat house 14' x 16'
- Milk Barn 18' x 47'
- Hay Barn #1 30' x 105'
- Hay Barn #2 48' x 55'
- Hay Barn #3 30' x 50'
- Hay Barn #4 21' x 101'
- Hay Barn #5 40' x 80'
- Amazing condition 5&6 strand perimeter and cross fencing
- Beautiful pipe fencing and pipe cattle handling facilities
- 10 of 11 ponds are tanked for year-round livestock water supply
- 4 auto waterers
- 6 cross-fenced pastures for rotational grazing
- 200 head cattle production capability
- 500 round bale; 250 square bale production
- Large elevated hunting blind
- Abundance of wildlife sightings
- Great combination of contours for great hunting habitat
- Lots of food and water for holding a large quantity of whitetail deer
- Close proximity to shopping and dining
- Buffalo School District
- 6 miles to HWY-65
- Pomme De Terre Lake nearby
- Near Springfield for large city attractions and more dining/ shopping options
- Legacy farm surrounding area



WHITETAIL PROPERTIES REAL ESTATE

HUNTING | RANCH | FARM | TIMBER

Brian Utecht | 417-766-5595

Brian.Utecht@whitetailproperties.com

WHITETAILPROPERTIES.COM

Missouri's Top Land Specialist in 2014, 2015, 2016, 2017, 2018, 2019, 2020 and 2021

NEW SHIPMENTS ARRIVING DAILY.



Backed By
Morse

**ORDER YOUR NEW CHEVY, BUICK OR GMC
TODAY AND GET EXACTLY WHAT YOU WANT.**

WE WANT YOUR TRADE.

**ED MORSE
CHEVROLET
BUICK GMC**

ROLLA

FORMERLY FAIRGROUNDS AUTO PLAZA

NEW NAME. SAME TEAM.

100 Fairgrounds Rd., Rolla, MO

573-364-1002

EdMorseChevroletBuickGMCRolla.com