

**FREE - TAKE ONE!**

Vol. 29 No. 25

**SEPTEMBER 15, 2022**

800-543-8271 • 800-665-8875

# **T** WEEKLY **TRADER** MAGAZINE



Find us on  
**Facebook**

@myweeklytrader  
AUCTIONS PG. 9

**VISIT OUR NEW WEBSITE! MYWEEKLYTRADER.COM**

## Serving Central Missouri! in 34 counties!



- Benton
- Boone
- Callaway
- Camden
- Cedar
- Christian
- Cole
- Crawford
- Dallas
- Dent
- Douglas
- Franklin
- Gasconade
- Greene
- Henry
- Hickory
- Howell
- Iron
- Laclede
- Maries
- Miller
- Montgomery
- Oregon
- Osage
- Ozark
- Phelps
- Polk
- Pulaski
- St. Clair
- Texas
- Washington
- Webster
- Wright
- Morgan

# **T** WEEKLY **TRADER** MAGAZINE

**417-532-9131**  
100 E. Commercial St.,  
Lebanon, MO 65536

**WWW.MYWEEKLYTRADER.COM**

**f @myweeklytrader**

# A heavy-duty offer for a heavy-duty tractor.



L2501DT

24.8 HP

Durable cast iron and steel design



Kubota®

Together we do more®

Save big on our L Series tractor and handle every job with a wide range of versatile performance-matched attachments. Kubota tractors are rated #1 for durability and owner experience in the U.S.\* Stop in for a demo and to claim this offer on select models today.

**\$0 DOWN 0% APR UP TO 48 MONTHS**  
**PLUS**  
**SAVE UP TO \$1,100**

VISIT US TODAY FOR THIS LIMITED-TIME OFFER



L2501DT PACKAGE

**\$22,495**

## Quarles Supply

3251 S Springfield Ave  
 Bolivar, MO 65613  
 417-777-2391

KubotaUSA.com

\*Award based on 2021 Progressive Farmer Reader Insights Tractor Study. © Kubota Tractor Corporation, 2022. \$0 Down, 0% A.P.R. financing for up to 48 months on purchases of select new Kubota L2501DT equipment at participating dealers in-stock inventory is available to qualified purchasers through Kubota Credit Corporation USA; subject to credit approval. Example: 48 monthly payments of \$20.83 per \$1,000 financed. Customer instant rebates of \$700 are available on qualifying finance or \$1,400 on cash purchases of L2501DT equipment. Additional instant rebate of \$400 is available with purchase of one new qualifying implement. Some exceptions apply. Offer expires 9/30/22. Terms subject to change. For complete warranty, disclaimer, safety and product information see dealer or KubotaUSA.com.

Progressive  
**FARMER**  
 READER INSIGHTS

2KBB04032\_Std\_L\_L2501\_F1\_7-1\_0628





## RCR12 SERIES

ROTARY CUTTERS  
20-50 HP 48", 60", 72" Widths



[www.landpride.com](http://www.landpride.com)

- Floating 3-point allows deck to hug the terrain
- Dishpan with dual blades
- 1" Cutting capacity
- 12 Gauge deck
- Front & rear rubber guards

**3 YEAR**  
Limited Gearbox,  
Warranty

Getting Chores Done  
**LAND PRIDE**  
*does that*

\*See dealer for complete warranty information

For Outstanding Products & Service  
**AGRI-ENTERPRISES**

1-1/2 Miles South Of Licking, MO On Hwy 63  
573-674-2203 • 1-800-653-7152 • [www.agri-enterprises.com](http://www.agri-enterprises.com)

**STORY & PICTURES BOOK OF OLD LINN CREEK:** Haha Tonka and Camden County, by T. Victor Jeffries, 72 pages. \$5.00 postpaid. (417)532-2045. (Leave message and phone number). Lebanon.

**CUSTOM SAW MILLING:** 417-533-4607. 417-664-1195. Lebanon.

**WEATHERED BARN WOOD SIDING:** 10" wide. 573-729-7226. [www.pineridgerustic.com](http://www.pineridgerustic.com) Salem.

**WE HAVE MOBILE HOMES:** Instock new arrivals (8) homes, need to go as soon as possible! 573-499-9993. [columbiadiscountshomes.com](http://columbiadiscountshomes.com)





**LOG SIDING:** 2X8 Pine/Western Cedar [www.pineridgerustic.com](http://www.pineridgerustic.com) 573-729-7226. Salem.

**AUSTRALIAN SHEPHERD PUPPIES:** 2 rounds of shots, tails & dewclaws done. Ready to go. Tris for \$150. 417-458-1047. Roby.

**VOTED  
#1 BEST  
Preowned Car  
Dealership**

## TIM'S USED CARS

(573) 341-3828 • 1334 South Bishop (Hwy. 63) • Rolla, MO  
Next to Hwy CC • [www.tims-used-cars.com](http://www.tims-used-cars.com)

 <p><b>2011 CHEVY 3500 HD</b> Crew Cab, 4x4, 6.0 V-8, Auto, Power Equipped <b>Only \$19,800</b></p>	 <p><b>2015 CHEVY IMPALA LIMITED LT</b> Power Equipped, Sunroof, V-6, 47,xxx Miles <b>Priced to Sell!</b></p>
 <p><b>2011 JEEP PATRIOT LATITUDE X</b> FWD, 4 Cyl Auto, Power Equipped, 147,xxx Miles <b>Only \$6,900</b></p>	 <p><b>2016 CHRYSLER TOWN &amp; COUNTRY TOURING L</b> V-6, Loaded w/ Options, 140,xxx Miles <b>Only \$15,900</b></p>

**LARGE SELECTION OF CARS, TRUCKS, SUVs & VANS!**

**AVON**  
make life beautiful

**mcg skincare**  
AVON independent sales representative  
**417-293-1609**  
Order online at:  
[www.avon.com/repstore/mcgskincare](http://www.avon.com/repstore/mcgskincare)

**USED MOBILE HOMES:** Call David at VILLA HOMES IN ROLLA 573-578-8072. Rolla.

**TINY HOMES:** We gottem 573-881-3283

**WANTED TO BUY ANTIQUE CARS:** Convertible, Corvettes, unrestored, motors, parts considered. 870-324-1154. Ash Flat.





**Specializing in farm and home,  
recreation, and commercial listings.**

Whether you're buying or selling, our team can save you time, help you avoid costly mistakes, and ensure you get the best value. Call or visit us online today to start your home search, talk to an agent or request your free home value report!

**Located in Mountain Grove, Ava,  
Gainesville and Theodosia.**

**CENTURY 21<sup>®</sup>**  
**Hometown Properties**



**MOUNTAIN GROVE**  
9871 E 20th St, Bldg A  
Mountain Grove, MO 65711  
417.926.1070



**TRUE MODULARS:** 30 to 60 day delivery available, 3 and 4 bedroom 573-657-7040 chateauhomes.net

**I BUY.....**used mobile homes. Call or text 573-338-6250 or email [GregS.CDH@outlook.com](mailto:GregS.CDH@outlook.com)

**REGISTERED HEREFORD & ANGUS BULLS:** Home raised, Some Show-Me Select Qualified. 573-701-7828. Belgrade.

**BUYING MOBILE HOMES:** Call David at VILLA HOMES IN ROLLA 573-578-8072. Rolla.

**LIONEL TRAIN SET:** Steam engine, tender, caboose and other car, track and transformer. \$195. 573-364-7465. Rolla.

**LIGHTLY EXPERIENCED GOLF BALLS:** \$3 a dozen. 417-818-3469. Strafford.

**EARLY 1900's CAMEL BACK STEAMER TRUNK:** Oak, 5 strap, solid, nice condition. \$95. 573-364-7465. Rolla.

**HARLEY FAT BOBS:** Custom flame paint w/ gas caps + lines. \$100. 573-764-3517. Call in P.M.

**COLT REVOLVER DEALER CATALOGS:** Circa 1950's + 1960's. All for \$100. 573-764-3517. Call in P.M.

**110 PORCELAIN POCKET WATCH DIALS:** Perfect for arts & crafts. \$100. 573-764-3517. Call in P.M.

**1890 GOLD TESTING KIT:** Glass acid beakers + antique wooden case. \$100. 573-764-3517. Call in P.M.

**NEW MOBILE HOME STOCK:** Just received (5) new units, they gotta go! 573-657-2176. [amegamobilehomes.com](http://amegamobilehomes.com)

# OFFICIAL TRACTOR OF TOUGH™

INTRODUCING THE ALL-NEW 5100 SERIES



## Marshfield Machinery Inc.

222 E. Madison • Marshfield, MO 65706

417-859-2117 • [www.marshfieldmachinery.com](http://www.marshfieldmachinery.com)

\*2018 data including all Mahindra group brand sales.  
MahindraUSA.com © 2020 Mahindra USA Inc.

**Mahindra**  
Rise.

### NEW MAHINDRA TRACTORS

1626 4WD & LDR 26HP	IN STOCK
2638 4WD & LDR 38HP	IN STOCK
4540 4WD & LDR 41HP	IN STOCK
4550 4WD & LDR 48 HP	IN STOCK
2670 CAB 4WD & LDR 70HP	IN STOCK

### USED TRACTORS

MAHINDRA 3550 49HP CAB LDR	25,000
MAHINDRA 2638 38HP 4WD LDR	24,000
JD 4120 43HP 4WD LDR	21,500
AC 7010 106 HP CAB	9,500
MF 135 36 HP	2,750

### USED ROUND BALERS

MF 1745 4X5	10,000
MF 1734	5,500
HESSTON 560 5X6	2,000
NH 850 5X5	1,500

### USED MISC.

HAYBUSTER 107 DRILL 10FT	9,500
BUSHWACKER 8FT CUTTER	3,000
SITREX 8 WHEEL RAKE	1,750
M&W 8 WHEEL RAKE	1,750
LELY 8 WHEEL RAKE	1,750
HESSTON 3PT TEDDER 10FT	1,750

## Marshfield Machinery Inc.

222 E. Madison

Marshfield, MO 65706

417-859-2117

[www.marshfieldmachinery.com](http://www.marshfieldmachinery.com)

## KUSTER LOGGING

**BUYER of Standing  
Timber  
Oak and Walnut**

Dozing Now Available

**417-259-0047**

References Available



**ROUTE 66 COOKBOOK:** Hogs on Route 66, best food hangouts or road trips on Route 66 by Michael Wallis and Marion Clark, 195 pages, hardback, lots of color photos, \$10. 417-532-2045. Lebanon. (Leave message and phone number).

### LAKE OF THE OZARKS FALL

**SPECIAL:** Lots \$4,950 - \$125 down, \$69 per month. Beautiful trees, free lake access and boat ramps, lots are a short distance from the lake, no credit checks, owner financing, immediate possession or own for investment. Also: acreage tracts. Missouri conservation boat ramp with covered dock and rest rooms nearby. **Prices good through September 29, 2022.** Hwy 135 between Stover and Sunrise Beach, MO. Take Lake Road 135-12 to the Ivy Bend Land Office. Closed Tuesdays and Wednesdays. Call anytime. 573-372-6493.

**KITCHEN FAUCET MOEN:** Single lever, sprayer, new cartridge. \$45 obo. 636-239-2695. Washington.

**1970s KIDS METAL STOVE & FRIDGE:** Nice Lithographic paint, 18" wide x 36" high. \$75. 573-364-7465. Rolla.

**3 GENTS WITTNAUER WRIST WATCHES:** 10k gold + 23J. All \$200. 573-764-3517. Call in P.M.

**DRAPES AND CURTAIN RODS:** Off-white, various sizes, \$15 for all obo. 636-239-2695. Washington.



**1500 VINTAGE WRISTWATCH DIALS:** \$100. 573-764-3517. Call in PM.

**HARLEY 45 SOLO:** factory rear brake drum + sprocket. \$150. 573-764-3517. Call in PM.

**HARLEY PANHEAD DISTRIBUTOR:** original, chrome + complete. \$125. 573-764-3517. Call in PM.

**1962 HARLEY SPORTSTER 900CC:** original distributor. \$50. 573-764-3517. Call in PM.

**SENNHEISER E835S MIC:** With on/off switch and case. Never used \$65. 417-844-4319. Springfield.

**HEARTH CRAFT GLASS BI-FOLD FIREPLACE DOORS PURCHASED AT FORSHAW'S FIREPLACE:** Antique brass. \$160 obo. 636-239-2695. Washington.


**CERAMIC CANISTER SET:** With cutting board that fits in kitchen counter-top. Various species of ducks on surface. Set \$30 obo. 636-239-2695. Washington.

**5 GAL. PLASTIC BUCKETS:** with lids. \$3 each. 636-239-2695. Washington.

**2 ILLINOIS 1927 LICENSE PLATES:** \$25 each. 573-308-5884. Rolla.

**1977 D6D BULLDOZER FOR SALE:** Good undercarriage, good machine. \$30,000. 336-466-2391. Falcon.

**FOR SALE AKC BEAGLE PUPS:** Tri-color males & females. 8 weeks. \$300. 2 Lemon & white males 16 weeks. \$400 each. Shots & dewormed. 573-627-2309. Sullivan.



## Meadowview Dutch Market

Bulk & Surplus Groceries • Prices Subject to Stock on Hand

**Call to Order**  
**417-993-3017**

**Sale Dates September 14<sup>th</sup> 2022 to September 20<sup>th</sup>, 2022 while supplies last!**

**DELI SPECIAL**

**CANADIAN BACON** ..... REG. \$6.49 LB. .... **SALE \$5.49 LB.**

**COLBY CHEESE** ..... REG. \$5.45 LB. .... **SALE \$4.45 LB.**

**TRY our Fresh Homemade DELI Sandwiches: TURKEY, HAM, ROAST BEEF, ITALIAN, BLT'S, PULLED PORK AND BLT PULLED PORK (MADE YOUR WAY)! COME IN OR CALL to order! ALSO Custom Deli trays! Veggie OR FRESH Meat-N-Cheese!**

<p><i>Salami</i> <b>Ends and Pieces</b> <b>\$1<sup>50</sup></b> LB.</p>	<p><i>Tropicana</i> <b>Orange Juice</b> <b>50¢</b> 32 OZ.</p>	<p><i>Sliced American</i> <b>Singles</b> <b>\$1<sup>69</sup></b> 12 OZ.</p>	<p><i>Maple</i> <b>Sausage Links</b> <b>69¢</b> 8 OZ.</p>
<p><i>Honey Graham</i> <b>Cracker</b> <b>50¢</b> 9.6 OZ.</p>	<p><i>Boneless</i> <b>Porkloin</b> <b>\$1<sup>79</sup></b> LB.</p>	<p><i>French</i> <b>Fries</b> <b>79¢</b> LB.</p>	<p><i>Turkey</i> <b>Bacon</b> <b>\$2<sup>75</sup></b> 12 OZ.</p>

**FRESH MISSOURI APPLES**  
**IN STOCK!!!**



**LAND-O-LAKES SLICED CHEDDAR**



**\$1<sup>60</sup>**  
8 OZ.

**MEADOWVIEW DUTCH MARKET**  
417-993-3017 Hours: Mon-Thurs 8-5pm  
Fri 8-6pm • Sat 8-5pm  
23 Miles West on Hwy 64 • Right on T Hwy  
9 miles • Left on E Hwy 1 mile on Left

**NOW ACCEPTING CREDIT, DEBIT CARDS & EBT**

**DUTCH COUNTRY STORE, LLC**  
573-378-4395  
Hours: Mon-Thurs 8-5pm  
Fri 8-6pm • Sat 8-5pm  
5 miles East of Versailles off Hwy C on Kelsay Road

**WANTED:** Old Pinball Machines and Juke Boxes. 573-424-7200.

**POLK COUNTY, MO. SESQUICENTENNIAL PHOTO ALBUM 1835-1985:** By George Hopper and James Sterling, \$25.00. 417-532-2045. Lebanon. (Leave message and phone number).

**RUBBER & LEATHER BOOTS AND HIP WADERS.** Men's 11, Women's 7, some insulated. \$15-\$40 obo. 636-239-2695. Washington.

**POOL TABLES:** Installations, moves, recovers, repairs, accessories, etc. 573-646-1700.

**FIREPLACE LOG GRATE:** 28" in width. \$25 obo. 636-239-2695. Washington.

**120 BRED COWS:** Late 2<sup>nd</sup> & 3<sup>rd</sup> period. 3-7 years old. 1, 250lb. Trucking available. 660-619-5190.

**SLIGHTLY USED PUZZLES:** Will sell or trade. 417-818-3469. Strafford.

**15 Y/O BOY LOOKING FOR EVENING JOBS:** Leave a message. 724-815-5279. Hartville.

**WINCO GENERATOR:** 25,000 watts, on metal 2-wheel trailer. \$2,000. Will consider offers. 417-259-1735.

**DARDEN PROFESSIONAL TIMBER HARVESTING, BUYING STANDING TIMBER:** Great prices, improve wildlife habitat and improve forest health. State Certified & Fully Insured! 573-247-4808. Salem.

**TRAILER:** 6x10, single-axle flatbed trailer. \$500 or trade for anything. 573-734-2822.

**1948 FORD COUPE:** \$1,500 or trade. 573-734-2822.

**HONDA 2017-4WHL:** forest green, excellent condition, drove 2 times, like new, manual shift. \$3,000 by appointment. Cell # 913-710-2554.



# The Builder's Choice!

**YOUR CHOICE FOR QUALITY PRODUCTS & FRIENDLY SERVICE!**



## DELUXE BUILDING PACKAGES AVAILABLE CALL TODAY TO GET YOUR QUOTE! **877-556-8855**

We offer numerous building packages for garages, decks, shops, pole barns, etc. You can choose from several different building package options, or you can customize the building the way you want it. We also offer commercial or mini storage building kits. Call for more details.

**HEAVY 29 Ga.  
METAL #1**

**Limited LIFETIME WARRANTY**

**29 Ga. & 26 Ga.  
Painted**

**CUT TO LENGTH PANELS**

**GALVALUME METAL UNPAINTED  
25 YEAR WARRANTY**

**#1 Standard Panels, 29 Ga.**



**Ask About Our Quick Service.**

**Over 20 Colors and Several Styles To Choose!**



## CALL US FOR CURRENT PRICING

All Buildings Quoted Have #2 Lumber And #1 Galvalume Or Limited Lifetime Painted Metal

All Buildings Are Heavy 29 Ga. Metal, Three 2"x6" T&G Splashboards, All Poles 5"x5" Or Larger, CCA Treated, Fully Trimmed With One 3'x6' Walk-Through Door & One Large Sliding Door.

Plus Tax. Labor & Delivery Available On All Building Packages. Prices may vary due to local code restrictions.



**BYLER BUILDING SUPPLY, LLC**



2 1/2 MILES EAST OF SEYMOUR ON 60, 1/4 MILE NORTH AT AUTO SALVAGE [WWW.BYLERSUPPLY.COM](http://WWW.BYLERSUPPLY.COM)

**877-556-8855** MON.-FRI. 7:30-5 SAT. 8-12 FAX NO. 417-935-2995 **417-771-3100**

**VISIT US AT [WWW.BYLERSUPPLY.COM](http://WWW.BYLERSUPPLY.COM)**



**3 METAL WOOD PLANES:** \$25 Each. Also, 3 Wooden Wood Clamps \$25 Each. 417-457-1023. Raymondville.

**GRAVITY WAGON:** 330 bushel, 20" truck tires, always shedded. Sharp. \$2,000. 573-378-5180. Versailles.

**WANTED YOUNG CATS:** Born bobbed tailed or tailless. 573-205-9415. Leave Message Will Return Call.

**SLAB WOOD:** For Sale. \$10/bundle. 417-468-2255. Conway.

**CASE 1394 TRACTOR:** Cab with loader, has Case 1394 Tractor operator's manual. 1,448 hours. No air-conditioning. 90% Rubber. \$15,000. Will consider offers. 417-259-1735.

**ROUND TABLE:** With Leaf insert. \$325. 417-741-1232.

**IRON PIG CUSTOMS LLC:** Custom fabrication metal décor, automotive arts & CNC Plasma. 417-322-5827. Stoutland.

**LARGE ELIPTICAL:** \$130. Also, Electric Leg Massager + more. Good condition. \$50. 573-465-0386. Rolla.

**CHINA CABINET:** For Sale. \$125. Small Round Table. \$40. Poster Bed. \$175. 417-741-1232.



**CENTRAL BOILER**  
**CLASSIC EDGE**  
TITANIUM HDX

26% Tax Credit on EPA certified Central Boiler Classic Edge HDX models and installation. Call today to learn more!

**Outdoor Wood Furnace**  
**CentralBoiler.com**

The Classic Edge 360, 560 and 760 HDX are U.S. EPA Certified

Yarbrough Equipment Sales & Services, Inc.  
9776 E. State Hwy 00 • Strafford, MO  
417-736-2303 • 1-866-286-6901 • www.yarbeq.com



**Wright Spray Foam Insulators, LLC**  
Commercial & Residential  
Call for FREE Estimates!

Ervin Gingerich  
417-926-2052  
B. Eli Yoder  
417-746-4932

**New kiln available for treating lumber.**  
Call Sanko at 417-322-0239 to schedule

**Prebuilt cedar shacks and live edge cedar sidings available.**  
For dimensions and pricing call Joseph at 417 589-0428

**tejas buds**  
www.tejasbuds.com

**CATAHOULA LEOPARD PUPS:** 1 male leopard golden brown brindle, 1 female red merle. \$150. 417-543-4816.

**AKC REGISTERED PEMBROKE WELSH CORGIE:** D.O.B. 7/02/22, U.T.D. on shots, very colorful, great breeding stock. \$600. 417-259-9738.

**84 PETERBILT 359 LONG HOOD B MODEL CAT:** 15 speed transmission, good condition. Also, 2004 Wilson Cattle Pot: 53FT., triple axel. Would like to sell together. Contact Shane Leer 417-588-0602 or 417-589-2039. Contact in the evening.

**I AM LOOKING FOR LAND TO RENT TO GROW WHEAT:** I can pay a good rate per acre for land that is fairly level, decent soil and in a 30 mile radius of Marshfield. I am looking for 80-500 acres. 417-741-2288. Marshfield.

**A FRAME:** 11FT wide x 10FT tall \$400. 3. John Deere 2-row corn planter \$400. 6FT Brushhog \$550. 3.5" Tubular Bale Forks \$400. 16FT Double Axle Trailer \$4,500. 8FT Truck Dump Bed \$700. 816-699-6851. Creighton.

**WWW.MYWEEKLYTRADER.COM**

**FOR SALE: White Dorper Ewe Lambs of various ages.** 417-464-0002. Seymour.

**MUMS:** Mums at the Highpoint Greenhouse in Hartville. 9337 Warner Rd. 417-741-2198. Hartville.

**STORY & PICTURES BOOK OF OLD LINN CREEK:** Haha Tonka and Camden County, by T. Victor Jeffries, 72 pages. \$5.00 postpaid. (417)532-2045. (Leave message and phone number). Lebanon.

**WANTED:** Old Pinball Machines and Juke Boxes. 573-424-7200.

**PLAD PANTRY**  
DISCOUNT & SURPLUS FOODS  
FRESH PRODUCE LLC  
417-532-4700



Vanilla Iced Coffee .....	\$1.99 48 fl. oz.
Chocolate Ice Cream .....	\$5.99 1 gal.
Rotisserie Seasoned Chicken Breast.....	\$2.49 11 oz.
Unsalted Butter Quarters .....	\$3.49 1 lb.
Variety of K-Cup Coffees .....	\$2.99 12 ct.

1571 State Hwy 64 • Tunas, MO 65764  
Hours: 8:30 a.m. to 5:30 p.m. • Closed Wed. & Sun.



*Stay Tuned*

**Starnes Auto Sales**

**MULTI - FAMILY YARD SALE**

**November 5th Starting at 7am**  
Laclede County Shrine Building  
204 N. Madison Ave  
Lebanon, Mo 65536



**YARD SALE**

*Don't Miss It!!*





### **Real Estate Sells At Noon!**

**SOUTHWEST AUCTION SERVICE**  
**Real Estate and Living Estate Auction!**  
 Office: 417-652-7540 Website: [www.swaauction.com](http://www.swaauction.com)  
**DATE OF AUCTION:** Saturday September 17th 2022  
**Starting Time:** 10:00 AM Rain or Shine!  
**Location:** 636 Wilderness Way Anderson MO 64831



### **AUCTIONEER'S STATEMENT:**

The Goddard's have lived on this property for over 30 years., At this time due to health reasons they feel they need a less rural environment and easier access to amenities offered in more populated areas. Everything goes!!! The property and all estate items.

### **DIRECTIONS TO AUCTION:**

**FROM WHEATON, MO:** Head west on E Main St toward S Duncan Ave. Follow State Hwy 76 W and State Hwy CC to State Hwy C in Goodman, Take State Hwy B, Split log Rd and Country Rd Nwf17/New Bethel Rd to Wilderness Way in Anderson West Township

**FROM ANDERSON, MO:** Take E Jefferson St to MO-59 S/State Hwy 76 W, Turn left onto MO-59 S/State Hwy 76 W, Turn right onto State Hwy F, Turn right onto County Rd Nwf17B, Turn right onto Wilderness Way.

**FROM JOPLIN, MO:** Follow I-49, Take exit 17 toward State Hwy B, Turn right onto State Hwy B, Turn left onto County Rd Gator Rd, Turn right to stay on County Rd Split log Rd, Turn left onto Johnson Rd/Split log Rd, Turn right onto Wilson Rd, Turn left onto Country Rd Nwf17/New Bethel Rd, Turn left onto Wilderness Way

**FROM ROGERS, AR:** Follow I-49 N to MO-76 W/State Hwy 76 W in Anderson East Township. Take exit 10 from I-49 N, Follow State Hwy 76 W, State Hwy F and Country Rd Nwf17/New Bethel Rd to Wilderness Way in Anderson West Township

### **Land and Home:**

**M/L 40 Acres— Deer & Turkey Hunting Paradise, Very Private**

**1200 sq. ft.— 2 Bed 1 Bath Semi Burm Home, Built 1985, Utility Room, Kitchen, Dining Room, Living Room, Open Concept, Central HVAC and Wood Burning Stove, Comes w/all appliances, 360 ft. Deep well with fresh water, good working septic, McDonald County School District, Property Tax Estimated under 400.00 per yr., Seasonal Creek Walk Across Bridge Walnut Grove, Logging company stated appx. \$25,000 in loggable timber.**

**300 sq. ft Garage—**

**28X40 Building— 1200sq ft., 2 Over head doors, 1 walk in door, Concrete Flooring, All Electric**

**12X20 Lean To Building— Great for Boats and RV Storage**



### **Tools and Recreational:**

Unfinished Custom Sandrail and extra sandrail parts, Craftsman Drill and Skill saw set, Jepson Drill, Milwaukee Hole Hog Drill, Many other assorted Drills and saws, 12ft Step Ladder, 18ft Extension Ladder, 6ft Step Ladder, Craftsman Tool box w/tools, Craftsman Black Rolling tool box w/tools, Red rolling tool box w/tools, Drill Press, Vice on stand, Metal Man Mig Welder, Lincoln Welder, Large and small air compressor, Assorted power tools, Generator 5550, Assorted wrenches, sockets, ratchets and assorted nuts and bolts, 13X13 Canopy, Tent, Chairs, Weedeaters, 2 Lawn Mower w/ deck and w/o deck, Sprayers, Wire Panels, T-Posts, Shovels, Racks, Chains, Ratchet Straps, Clippers, Hand Saws, Old Batteries, Salt and pepper shakers, Iron Christmas Decors, Small apartment refrigerator, Lumber gal. Propane Tank, Cast Iron Cookware,

### **Farm Machinery:**

**Massy Ferguson 1965— on LP, Brush hog and box blade**

### **Trucks, Trailers and Vehicles:**

**2004 Dodge Ram 4 Door Hemi— New 10 ply tires, Power windows, and door locks, A/C and Heat Runs good.**

**2006 Mercury Montego— Power windows, door locks and trunk, A/C and Heat Runs good.**

**1990 Sterling Motorhome— 24 ft., A/C, Refrigerator, Stover, Propane tank.**

**Boat and Single Axle Escort Trailer— 17 ft. Black and Silver Spectrum w/Bikini Top, 90 horse power force out board motor, Seats 4, Stereo System, Minnkota Trolling Motor and Anchors, Glass Walk through windshield, Hummingbird Depth Finder, Garmin Depth Finder.**

**Formula V— Volkswagon Vintage Racer with extra fiberglass bodies and suspension.**

**1951 Chevy— Gasser Rat Rod Street and Strip Legal with title, 385 Stroker, Ross Forged Pistons, Holley Strip Dominator Intake Single Plane, 545 Lift Cam**

**His and Hers Sandrails— Over 12,000 to build on each.**

**Black Sandrail, 1835 Volkswagon Motor**

**Black and Purple Sandrail, 1835 Volkswagon Motor**

**16ft Flatbed w/Storage Box— Truck Bed Trailer no title /vin.**

### **Terms of the Auction:**

**\*\*Property has 30 days to close at Waco Title in Pineville. Property sells with 10% Buyers Premium and 5% non-refundable Deposit on Sale Day\*\***

**Preview by Appointment Only—**

We accept Cash, Good Checks w/ proper ID & Credit Card (5% Convenience Fee) We are not responsible for accidents to man, woman, child or animal. We are not responsible for lost, stolen, or damaged articles or property! All accounts must be settled prior to removal of auction item! Statements made day of auction take precedence over all printed materials! For more pictures visit our website at [www.swaauction.com](http://www.swaauction.com)

**Bob  
Hughes**  
417-652-7540





# ESTATE AUCTION

**Saturday, September 17th, 2022 ~ 10:00 AM**

LOCATION: 1686 S Palomino Road, Carthage, MO; At The East Edge Of Carthage; GPS Will Get You There (Watch For Signs)

## AUCTION FOR Robert "Bob" & Barbara Deitz



### Antique, Modern Furniture & Appliances

Ornate Cast Iron New Air Wood Heat Stove Outstanding!!!, Rare Ant 1800's Kidney Type Shelf W/Mirror, Ant Oak Pie Safe, Ant Oak Child's High Chair & Rare Rocking Chair, Ant 3 Stack Oak Lawyers Bookcase & Another Lawyers Bookcase, Ant Oak Library Table, Ant Oak Entry Table W/Drawer, Ant Vanity Dresser, Ant Oak Rockers, Ant Oak Chairs, Ant Oak Dressers, Ant Oak Buffet, Ant Upright Lawyers Bookcase, Ant Oak Treadle Sewing Machine, Ant Kitchen Cabinet, Several Sm Ant Tables Some Ornate, Ant Clocks, Ant Trunks, Ant Drop Leaf Breakfast Table & Chairs, Ant Metal Store Safe, Ant Daybed, Ant Pictures & Paintings, Ant Iron Bed, Ant Iron & Marble Bottom Lamps, Ant Child's Furniture, Lots Of Prim Wood & Metal Furniture, Ant Wood Shelves, Prim Metal Cabinets, Ant Gas Cook Stove, 2 Ant Refrigerators, Ant Metal Glider & Metal Yard Chairs, Old Wicker Furniture Pcs, Lots Of Prim Doors & Windows, Ant Console Stereo, Oak Round Front Curio Cabinet, Cedar Armoire, Wood Coffee & End Tables, Marble Top Kitchen Island, Maple Kitchen Table & Chairs, Maple Kitchen Hutch, Jewelry Armoire, Ornate Seiko Part Moving Clock, 2 Different Style Matching Couch & Setting Chairs, 2 Twin Beds, 2 Lift Chairs, New Combo Fans, Wurlitzer Piano, File Cabinets, TV's, 2 Stereo Systems, Handicap Supplies, 12 Cu Ft Chest Deep Freeze, Apt Size Refrigerator, Whirlpool Washer & Electric Dryer, Other Items Not Listed

### Antiques, Primitives & Households

Lot Of Black Americana Memorabilia Inc Aunt Jemima & Rufus, Also Rare 1 And Only 4 Pcs Of Ida Chubb Original Chalk Paintings (Only Ones Known To Be Still In Existence), Ant Cast Iron Mailbox, Ant Toledo Store Scales, Ant Hotel Sweeper, Ant Popcorn Popper, Ant Globe,

Ant RxR Lanterns, Ant Kerosene Heater, Several Ant Crock & Crock Bowls Some Unusual, Ant Oil Lamps, Ant Montgomery Ward Table Top Cream Separator, Ant Wood Adv Boxes, Ant Child's Hand Sewing Machine, Ant Cameras, Several Ant Toys, Several Rare Collector Jars & Bottles, 2 Glass Daisy Butter Churns, Old Graniteware Pcs Inc Blue Swirl, Ant Sad Iron Collection, Ant Smoking Pipes, Old Cream Cans, Old Marbles, Rare Dandy Glass & Metal Kerosene Jug, Jadeite Pcs, Ant Metal Bird Trap, Ant Coffee Grinder, Ant Lanterns, Ant Tins, Pewter Pcs, Old Records, Several 1800's Books, Silver Pcs, Ant Kitchen Utensils, Pyrex Colored Dishes, Old Linens, Old Jewelry, Bells Nichols Pcs W/Boxes, Lg Lot Of Old Holiday Décor Inc Old Christmas, Pots, Pans & Dishes, Lg Lot Of Everyday Households & Kitchen Wares, Other Items Not Listed

### Portable Storage Building, Guns, Gun Safe, Tools & Outdoor Items

14x30 Portable Storage Building On Skids, Stihl Gas Blower, Stihl Chainsaw, Stihl Tree Saw, Gas Power Washer, Shop Vac, Table Saw, Ant Toro Push Mower, Long Handle Tools, Lg Shop Fan, Ladders, Sm Hand & Electric Tools, Car Ramps, Gas Cans, Patio Furniture, Concrete Yard Décor, Rare Springfield 1834 Long Tom Civil War 69 Cal Musket, Rare Win Ranger Model 52 Target Bolt Action 22 W/JC Higgins Scope, Rare Marlin Model 1897 Lever Action Hex Barrel 22 Rifle, Win Model 67 Bolt Action 22, Charles Dailey Model 1911 Semi Auto 45 ACP Pistol, Daisy Model 1894 NRA Collection Lever Action BB Gun, Liberty Gun Safe, Hunting Supplies, Fishing Poles & Supplies, Camping Supplies, Coolers, Other Items Not Listed



**AUCTIONEERS NOTE: WOW!!!** What An Amazing Antique Estate Auction! It Is An Honor To Be Conducting This Auction For The Deitz Estate. Bob & Barbara Were Very Avid Antique Collectors For Over 50 Years & Had An Excellent Eye For The Rare Unique & Very Hard To Find Items. It Is A Rare Opportunity To Get To Purchase Items Like This At Public Auction. If You Are A Collector Or Dealer You Do Not Want To Miss This Auction. You Will Not Be Disappointed!!! Please Plan Now To Attend This Amazing Auction. **Sale Order: Antique, Modern Furniture & Appliances Sell First Followed By Rare Antiques, Primitives, Collectibles, & Households. At Approx 2:00 PM Will Offer Building, Guns, Safe & All Tools & Outdoor Items. Remainder Of Small Antiques & Households Will Finish Auction. See Ya There!!!**

Terms: Cash or check with proper ID. Now accepting most major credit cards. Nothing removed until settled for. Statements made the day of sale takes precedence over printed material. Everything sold as is where is. Not responsible for accidents. Restroom available. Concessions Provided. Check our website for upcoming auctions and for additional pictures!!



## NANCE AUCTION SERVICE

No Matter How BIG or small, We Do Them All!

[www.nanceauctionservice.com](http://www.nanceauctionservice.com)



Col. Bill Nance 417-214-0093

In God We Trust

Philippians 4:13

Sean Beazley 417-247-6754

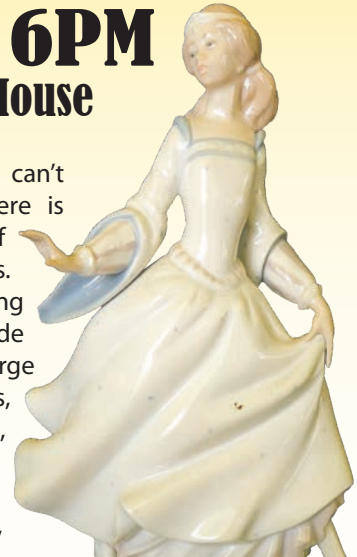


# R&R AUCTION SERVICE

## SPECIAL SEPTEMBER AUCTION

**FRIDAY, SEPTEMBER 16TH @ 6PM**  
**1644 S. Ash St. Buffalo -- Inside the R&R Auction House**

They say a picture is worth a thousand words. One thing is for sure, words can't describe everything that is available at this special September 16th auction. Here is a small portion of the list that should be written to explain the magnitude of quality merchandise. Please keep watch on the website for lots of amazing pics. Grandfather clock, small upright freezer, refrigerator, gas range, sofa, gliders matching ottomans, recliners, several display cabinets, barrister cabinets, entry table, coffee table, side tables, magazine racks, lots of dragon figurines, Old wooden and metal divider screen, Large collection of Lydia Seraphin classic angels by Roman, carved lamp and magazine tables, marble top fern stands, jade/stone/granite carvings, Original Guiseppe Armani figurines, bubble reverse painted picture, Lladro porcelains, Erte fine porcelains, vintage glass swag lamp, ice cream table and chair set, bar set, old ruby red lamps, vintage Fairfax vacuum, oak queen bed set, jewelry cabinet, lots of jewelry, knives, collector plates, antique sword, outdoor furniture, wrought iron, Royal Doulton figurine, castles (including Lenox, Walt Disney, and more), old quilt, a very large ship collection, globe, octagonal bumper pool table with balls and cues, old bottles and tins, and much more!



**Please keep watch on our website for added photos.**

**TERMS:** 10% BUYERS PRMIMUM. Cash, check, or credit card with proper I.D. nothing removed until settled for A 3% fee will be added to credit card purchases. Not responsible for errors in listing. Any announcement made sale day will take precedence over any printed matter.



For more information contact Professional Auctioneer Russ Weeks at 417-576-7357 or check out [www.rrauctionservice.com](http://www.rrauctionservice.com)

Serving this area's auction needs since 1997  
 with honesty and professionalism.  
[www.rrauctionservice.com](http://www.rrauctionservice.com)

(417) 576-7357 or (417) 345-4140



*Sam*

LLC

**CRAWFORD AUCTION SERVICE**

Will sell the following located in Sunrise Beach, MO - Jct. Hwy 5 & F stop light, 3 miles Southeast on Hwy. F to Oak Bend Rd., then 1 mile East. Watch for auction signs.

**WEDNESDAY, SEPTEMBER 21<sup>ST</sup>, 2022 - 9:30 AM**

***BACKHOE - TRACTOR - ATV - TOOLS - FURNITURE - MISC.******ATV - BACKHOE - TRACTOR******SELLS AT 12:30***

Kawasaki 3010 Mule 4x4 610 Hrs., Front Winch w/Snow Plow, Nice  
John Deere 300B Backhoe, Diesel  
Ford 8N, Side Distributor & Tach, Good Rubber  
3 Pt. Blade

***TOOLS - OTHER***

Parts Washer  
Welding Table & Vise  
Anvil 100#+  
Older Vise  
Grinder on Stand  
Hydraulic Press  
Cherry Picker  
Craftsman Radial Arm Saw  
Electric Cement Mixer  
Jack Stands  
P & H AC/DC Arc Welder  
2 Older Portable Welders for Scrap  
Snap On Professional Tool Chest  
Kobalt Tool Chest  
Lg. NAPA Floor Jack  
Other Floor Jacks & Hydraulic Jacks  
Lots Asst. Sockets - Wrenches  
3/4 Socket Sets  
Diamond Plate Side Toolbox  
Cutting Torch Complete  
4-5 Small Air Compressors  
2 Portable Generators  
3 Motor Stands  
JD Space Heater  
Husqvarna Power Washer  
Transfer Pump  
(20) 12V Sprayers  
2 Chain Hoists  
Ratchet Hoist  
Genie Lift  
2 Handyman Jacks  
Wood Spltter  
2 Receiver Hitches  
Beacon Training Light w/Case (From 40's)  
Lot Asst. Power Hand Tools  
Boomers

Log Chains  
Long Handle Tools  
Oil - Anti-Freeze - (2) 5 Gal. Hydraulic Oil  
Plastic Boxes for Bolts  
Asst. Bolts - Washers  
2 Patio Gas Heaters  
2 Rools Plastic Conduit  
6-8 Bags R-13 Insulation  
300 Gal. Fuel Tank  
Alum. Extension Ladder  
Some Lumber - (3) 3/4 Sheet Plywood  
Gas Cans  
Steel & Plastic Barrels  
Asst. Colored Metal Roofing  
Pontoon Tube  
Lot Scrap Iron - Old Inboard Boat Motors -  
Compressors - Batteries  
5-6 Old Golf Carts  
Lot Flat Concrete Blocks for Walk Way  
500 Gal. Propane Tank  
Some Pipe - Rebar  
Lot Misc. Electric Wiring - Scrap  
Single Axle Lawn Mower Trailer  
Boat Trailer  
Invader Fiberglass Ski Boat & Trailer - Title  
Celebrity Fiberglass Cabin Cruiser & Trailer  
Boat Lift  
2 Jet Ski Lifts  
*Boats Are Not Running*  
Jet Ski Trailer - Title  
Lot Misc.

***HOUSEHOLD***

Roll Top Desk  
Maple Desk & Chair  
Grandfather Clock  
Dining Table & 4 Chairs  
Oval Coffee Trable  
Ant. Round Oak Table & 5 Chairs  
Leather Top Game Table (Casino Boat)  
Corner Curio Cabinet  
Square China Hutch  
2 Oak Bar Stools  
Ant. Tri-Fold Mirror & Vanity  
2 Cabinet Model Sewing Machines  
Victory Chest Cooler - "Coke"  
Other Misc.



*Sam*  
**CRAWFORD**  
Auction Service LLC



**TERMS:** Cash or good check. Nothing removed until settled for. Not responsible for accidents. Lunch available. Statements made day of sale take precedence over printed matter. All items sell as is. No warranties given or implied.

**417-998-6629**  
Cross Timbers, Mo.

CrawfordAuctionService.com



Sam  
417-328-9137

Chase  
417-399-1904

Chance, CAI  
417-298-1751

Tom Poynter  
Jack Lancaster

LAUNCH DATE 9/15/2022





**Saturday, September 17, 2022 • 10:00 a.m.**

**LOCATION:** 11565 Reed Road, Licking, Mo. From 4-way stop in Licking, take Highway 137 south 1-1/2 mile to Reed Rd. Turn right and continue on Reed Rd. 1 mile to auction. Watch for signs.

**Go to [auctionzip.com](https://www.auctionzip.com) to view photos. Auctioneer #28367**

Sauna - portable	Pitchfork, Post Hole Digger, Shovels, Hoe	Enamel Roasters
Upright Freezer - Kenmore - 17 cu. ft.	Floor Jack, Car Ramps	Pole Lamp, Coat Rack
Dinner Bell	Measuring Meter, Levels	Games, Basketball
Metal Shelves	Air Compressor, 15 gal.	Cold Packers, gray enamel
Shepherd Hooks	Punch Bars, Come Alongs, Grease Guns	Gun Case, Leather Holster
Coleman Cooler	Channel Lock, Pliers, Crescent Wrenches,	Stock Pot
Fishing Tackle, Fishing Poles	Sockets - Pittsburg Pro	Strainer, Casserole Dish
Lug Wrenches, Jumper Cables	Stanley Ratchets	Yamaha Stereo
Jack Stands	Open & Box End Wrenches	Brother Portable Sewing Machine
Reese Hitch	Drill Bits, Hammers, Chisels	Glass Cake Stand
Fruit Jars	Air Impact Wrenches of all kind	Flat Screen TV
Big Speakers & Stereo System	Crow Bar, Pipe Wrenches	Iris Vase
Nails, Nuts & Bolts, Nut & Bolt Caddy	DeWalt Drill, Jig Saw, Grinder, Sawzall, Skil	Refrigerator
Portable BBQ Grill	Saw	Dining Table & 6 Chairs, claw foot, oval
Work Cabinet & Wooden Cabinet	Rotozip	Bookcases
Husqvarna YTH24V48 Riding Mower	Dremel Tool Grinder & Polish Kit	Lift Rize Full Size Bed
Extension Ladder, Step Ladder 10 ft.	3/4 in. Socket Set	End Tables, Desk
Dog Kennel, new	Hypertough Tool Chest	Cedar Chest, hand made
Bin on wheels	Tomato Cages	Curio/Gun Cabinet combo
Weedeater, electric	16 ft. Gate	Longhorns
Push Mower w/Bagger	Bookshelf	Coffee Table w/rising top
3 in. water pump - Storm Surge	Pool Table	Vizio Flat Screen 60 in. TV
Chain Hoist, Boomer	Hen on nest & Rabbits & Cat	Rolltop Desk, Office Chair
Metal Work Bench, Vise	Knife Set, Rolling Pin	Books, gardening & health
Gas Cans	Pots & Pans, Baking Pans	Patio Bar & Chairs
Bench Grinder	Set Christmas Dishes	Bedroom set, full size, solid pine
Heavy Duty Wheelchair	Electric Skillet	Bed, complete set, old, Dressing Vanity,
Bicycle, long front	Mirrors, Metal Tins	Chest of Drawers
Schumacher Battery Charger	What nots, Plastic ware	Washer & Dryer
Craftsman Chainsaw, 20 in.	Magazine Rack	Other items too numerous to mention.

## **Douglas Barthelmes Estate, Claudia Barthelmes Per. Rep.**

Terms-Cash or Approved Check. Not Responsible For Accidents. Nothing Removed Until Settled For.  
Must show ID to get Buyers #. Announcements Made Day Of Sale Take Precedence Over Printed Matter.

**Buckner & Gately Auction Service**  
**Auctioneers**

Steve Buckner 573-674-2686

Neal Gately 573-202-3132

# SCHERR COUNTRY AUCTION

**SATURDAY, SEPTEMBER 17, 2022 • 10:00 A.M.**

**1100 Scott Station Rd, Jefferson City, Missouri**

**Directions:** From Hwy.50 West "By Capital Mall", take Truman Blvd Exit & go north to Scott Station Rd, turn left and go approximately 1 1/2 miles to farm on right.

## TRACTORS AND EQUIPMENT

1981 John Deere 4240 Cab 3481 hrs, Dual Hyd Remotes, 3 pt 18.4x38 Nice Tractor; Bush Hog 2615 Legend 15 ft Cutter, Good Condition; Bush Hog Blade Hyd 141-09 3 pt Good Condition; 8 ft 2 wheel Trailer.

## LAWN MOWERS, FOUR WHEELER

Honda 4 Trax 300 4 Wheeler; John Deere GX 345 Riding Mower with Bagger; Snapper I422 Snow Blower; 26 x 900 X12 ATV Tires; Push Mower; Lawn Aerator 5 hp.

## TOOLS AND MISC

125 LB Anvil; Acetylene Torch Set; Forney Welder; Pipe Wrenches; Boomers; Tap & Die Set; Metal Band Saw; Ext. Cords; Elect. Power Washer; Wagner Airless Paint Sprayer; Lead; Fence Stretcher; Misc Power Tools; Scrap Copper Wire; Air Tank; Wheel Barrow; Block and Tackle; Misc Hand Tools; Post Vice; Pipe Vice; Poly Tubs; Cement Blocks; 40ft Ext. Ladder; Conduit; Central Mach. Wood Lathe; 6" Jointer; Dewalt Metal Chop Saw; Misc Tires; Tarps; Tin; Scrap; Old Windows; Alum Step Ladder; Lots Misc Not Listed.

See [www.moffatauction.com](http://www.moffatauction.com) for photos & complete listing

**Owner: Joe and Helen Scherr Trust**

## ANTIQUES, COLLECTABLES, AND HOUSEHOLD

Antique Music Box in Wood Case; 38 pc Sterling Flatware; Silver & Silver Plate; Costume Jewelry; Lead Toy Soldiers; Hand Stitched Quilts; Gas Iron; Flat Irons; Apple Peeler; Swarovski Crystal Mermaid-Lion; Waterford Crystal Eagle; Fenton Swan; Santa's; Brass Deer; Kraut Cutter; Jesse Bars Framed Prints; Rug Beater; Sofa; Recliner; Reclining Love Seat; Singer Sewing Machine; Wash Boards; German Jacobus Stainer Violin; Banjo Clock; Buttons; 70's Hanging Lamp; Chest Freezer; Air Care Humidifier; 1960's Grey End Tables; Gas Lamps; Cast Iron Muffin; #12 Cast Iron Skillet; Cast Iron Dutch Oven; Jars; 33 records; Oak Desk; Puzzles; 22 Short Ammo; Old Oak Pie Safe with Glass Doors; Wash Tubs; Wood Pulleys; Beam Scale; Metal Toy Trucks; Lionel Train Set; Treadle Sewing Machine; Child's Sled; Lots of Misc Household Not Listed.

## ROUGH SAWN LUMBER

800 FT Red Oak; 860 FT Cedar; 1630 FT Walnut.



**Note:** This farm is a Century Farm and has been in the Scherr Family for over 100 Years. It is a beautiful setting with many out buildings and large barn full of items to be sold. There are not many Century Farms left. Please mark your calendar and make plans to attend. Thanks Rick

**Terms:** Cash or good check with proper identification. All sales are final. Everything sells as is, where is. Proper identification is necessary to obtain a buyer's number. Announcements day of sale supersede all printed material. Food on grounds.

## RICHARD MOFFAT AUCTION SERVICE



573-761-4293  
Jefferson City, MO

Auctioneers:  
Richard Moffat & BJ Moffat  
[www.moffatauction.com](http://www.moffatauction.com)

573-690-2823  
Linn, MO



# ESTATE AUCTION

## TWO-DAY SALE - SEPT. 24 & 25

**Directions:** From Salem take 19 north to 68, follow 68 5 miles to FF, turn onto FF for half a mile, take Co Rd 3310 to the right, follow to sale site. Property is at the end of the of the gravel road. Watch for signs.

### FURNITURE - HOUSEHOLD - TOOLS - LAWN ITEMS - COLLECTIBLES - GUNS - AMMO

**Property to be offered:** 200 acres m/l, nice bottom fields, app, 70% open, the rest in timber, some marketable. Running water and well. 4 bedroom, 4 bath, split level home, full multi-level basement kitchen, dining/living room/washroom and mud room, 2 car attached garage, old 40x40 barn, ponds and fenced. This is a great cattle farm, bottoms are good enough for grain, always wildlife on farm. Several loads scrap vehicles, you will need a way to load them.

**Property will be offered at 12:00 on Saturday. 10% down day of sale, will be held until cleared by court as stated on sale bill.**

**The sale of the real estate is subject to approval by the probate court of Dent County, Missouri and such approval will take a minimum of ten days following submission of the sale report to the court.**

### SATURDAY, SEPTEMBER 24 AT 9:30 AM

Winchester Model 370 28 Gauge Single Shot  
2 Glenfield Model 60 .22 Rifles  
Porch Swing - Patio Furniture - Shepards Hooks  
Dollie - Rakes - Radio Flyer Wagon - Wall Decor  
Hand Stitched Quilts - 51" Flatscreen TV  
Eschenbach Bavaria Germany  
Candles - Clear Hen on Nest - Crystal Stemware  
Red Swivel Recliner - Salem, MO Coke Bottles  
Keurig Coffee Maker - Bunn Coffee Pot  
Pocket Watches - Costume Jewelry  
State Spoon Collection - Old Teacher's Bell  
Ozark Heritage Area Vol. 7  
Ozark Hills Friends & Neighbors 1829-2000 Vol. 4  
Ozark Heritage Vol. 3 - Old Well Pump  
Hardee Outdoor Wood Furnace  
Rear Tire Troybuilt Tiller - Metal Lawn Chairs  
Milk Can - MFA - 48 Milk Can - Hoses & Reel  
Martin Houses - Yard Wagons - Army Fuel Cans  
Gas Grills - 3, 20 lb. Propane Bottles  
5 Stackable Tool Boxes Full of Good Tools  
Craftsman Worm Drive Skill Saw

2 Old Metal School Desks  
Arctic Boy Water Cooler - Old  
Old Wooden Boxes - Coolers  
Book Shelves - 2 Old Wooden Rocking Chairs  
Several Lots of Western VHS Tapes  
Kitchen Table & 4 Wood Chairs  
Floral Love Seat - White Wicker Pieces  
Several Very Old Cast Iron Toys & Horse Set  
Kenmore Chest Deep Freezer  
Lots of Deer Horns - Shot Gun Shells  
Ammo Boxes - Wood Clamps  
Marlin Glenfield Model 556 12 Gauge Shot Gun  
Crosman ".22" Model 120  
Refrigerator - Battery Powered Weed Eater  
Leaf Blower - Building Supplies  
Signed David Plank & Rob Stine Paintings  
2 Rocker Recliners - Old Stereo Box  
Kitchen Table & 6 Chairs - Several Old Steins  
Corner Shelf - TV Trays - Old Games  
Kitchen Aid Mixer White - 3 Crock Pots  
Electric Skillet - Set of Corning Ware

Old Oil Lamps - Metal Pitcher  
Several Old Cooking Primitives  
Lots of Old Wooden Boxes - Band Saw  
Old Sausage Press - Plumbing Supplies  
Water Pump & Fittings - Pressure Washer  
Coca-Cola Crate - 2 Copper Ash Buckets  
2 Old Sleds - Several Small Dressers  
4 Bedroom Sets - Full to Queen - End Tables  
Large Old Wardrobe - Grease - Oils  
Lincoln 225-S Welder  
2 More Stackable Tool Boxes  
DeWALT 230 Volt 5hp 175 Gallon Upright  
Like-New Compressor  
30 Gallon Sprayer - Floor Jack - Bumper Jack  
Set of 3/4" Sockets - Nuts - Bolts - Screws  
Hitch Pins - Trailer Jacks - Lead Rods  
C-Clamps - Hammers - Rakes - Shovels  
Lot of Electric Cords - Air Hoses  
Good Log Chains - Straps - Hooks  
Grease Guns - Saddle Bags - Small Saddles  
Milk Glass - .9 mm Luger Ammo - .308 Ammo

Old Singer Treddle Sewing Machine  
Very Old Metal Trains - Old Jars  
Kerosene Heater - Small AC Unit  
Boat Paddles - Large Set of Revere Ware & Pyrex  
Several Stackable Stainless Bowls  
Texas Ware - Tableware - Tupperware  
Deep Fryer - 10 Piece Corelle Plates  
Nail Kegs - Several Lots of Carpenter Tools  
Battery Powered DeWALT Skill Saw 18 Volt  
Sawzall  
Kenmore Washer & Dryer  
Husqvarna 141 Chain Saw  
Small Torch Set - DeWALT Metal Cut Off Saw  
Craftsman Stackable Tool Box  
Welding Rods - Limb Saw - Floor Creeper  
Angle Grinder - Table Grinder - Drill Press  
Pipe Wrenches - Fuel Tank Pump  
Wood Step Ladder - Old Wood Planter  
Key Making Machine and Keys  
Several Old Primitives - Old Wood Tool Boxes  
Many Items Not Listed

### SUNDAY, SEPTEMBER 25 AT 11:00 AM

Steel Wheeled Mod 4-20 International  
Harvester - Scrap  
Massey Ferguson 150 W 235 Front End Loader -  
Scrap  
80's Dodge Truck - Trailer Frame  
Several Late 60's Early 70's Chevy Pickups  
Fuel Tank on Stand - Lots of Plywood  
Doors - 3 Pt. Front End Hay Spike  
Wooden Ladders - Old Metal Bed Frames  
Primitives - Lot Lumber

Pair of Steel Rear Tractor Wheels - Old  
Ram 1500 V8 Extra Cab 4x4  
18' Stock Trailer - Ram 1500 V8 4x4  
John Deere 606 3 Pt. 6' Bush hog  
Old Tire Changer - 2 Front End Fork Sets  
7' Blade - 16' Homemade Single Axle Trailer  
M9000 Kubota Tractor LA 1251 Front Loader  
12' Homemade 2 Axle Trailer  
MTD 25 Ton Wood Splitter  
16' Aluminum Box Bed Storage

McCormick #7 Horse Drawn Hay Mower  
Old Ford Van - Old Chevy Station Wagon  
60x80 Cattle Panel System - Sorting Pen and  
Round Pen  
Priefert Head Chute - 3 Pt. Bale Unroller  
Full Roll 36" Woven Wire Red Brand  
50+ Used Steel Posts - Truck Box  
Truck Bed Trailer - Front End Bail Spike  
Steel Wheels - Mineral Feeder  
Bush Hog 2615 Brush Hog 15' Batwing

Gen Pole - 3 Pt. Post Hole Auger - Pipe Gates  
Fuel Tanks - Small Finish Mower  
Hog Panels - 10+ Plastic Culvert Pipe  
Canoe - Several Wood Step Ladders  
Scaffolding - Old 5x5 ATV  
79 Ford - 300 Gallon Homemade Sprayer  
Chuck Wagon 650cc V-Twin Side-by-Side  
Many Items Not Listed

**See you there! - Tom**



### ROSEMAN ESTATE

ANNOUNCEMENTS AT AUCTION TAKE PRECEDENCE OVER PRINTED MATTER

## WULFF AUCTION

TERMS: CASH OR  
APPROVED CHECK -  
I.D. REQUIRED  
NOTHING REMOVED  
UNTIL SETTLED FOR

Licensed  
Appraisals

2334 Highway K, Salem, MO 65560

**AUCTIONEERS:**

Col. Tom Wulff • John Wisdom

Cell: 573-247-3884 • Cell: 573-247-9563 • Home: 573-729-8476

Clerk: Tracy Strange

Cashier: Nancy Inman

See Wulff Auctions at [www.thesalemnews.com/auctions](http://www.thesalemnews.com/auctions)



RAIN OR SHINE  
OWNER & AUCTION  
PERSONNEL NOT  
RESPONSIBLE  
FOR ACCIDENTS AT  
SALE SITE



# PUBLIC AUCTION

**SUNDAY, SEPT. 18 @ 11:30 A.M.**

**Directions: SALEM, MO** - From Salem take Hwy. 72 to County Road 2240, across from the hospital. Go 3 miles, on right, lake in front of asphalt driveway. Watch for signs. **SOLD HOME.**

**HOUSEHOLD • FURNITURE • COLLECTIBLES • ANTIQUES • TOOLS  
LAWN ITEMS • MOWERS • MISC. ITEMS**

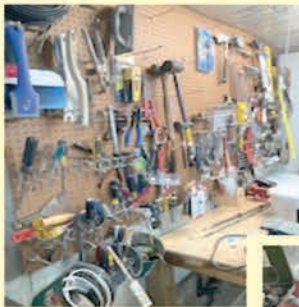
Paddle Boat - Life Vests - Large Storage Box  
Shop Vac - 8' Fiberglass Step Ladder  
Extension Ladder - Wood Rack w/Cover  
2 Old Cream Separators - Tin Knights, 4' Tall  
Pictures - Dry Sink - Antique Silverware Set  
4 Sets of Room Dividers - Office Chairs  
2 Leather Covered Barstools  
8 Chairs, Oak Table w/2 Leaves  
Natuzzi Leather Chair & Loveseat - Paintings  
End Table - Brass Queen Bed - Chest of Drawers  
Dishes - Cookware - Solid Oak Desk - Records  
Nice, Old Victrola - Coat Rack - Dehydrator  
George Foreman - Cedar Chests  
Old Bank Safe from St. James  
Century Gun Safe, 8+ Gun - Antique Walking Dolls  
Antique Child's Rocker - Lamps - Game Camera  
Small Bookshelf - Rockwell Sonicrofter  
Blow Gun - 5 Sets of Shelves - Air Impact Wrench  
1/2" Air Impact Wrench - Deep Well Sockets SAE  
Brad Nailer - Bosch Hammer Drill - Bits  
Porter Cable 18V Drill - New Hitachi 2" Brad Nailer  
Delta Circular Saw - 7 1/4" Circular Saw  
Battery Charger - ATV Carry-all - Mower Jack

Big Bertha Massager - Fan - Oils & Grease  
Deer Antlers - Paper Shredder - 1/2" Drill  
Coolers - Shovels - Rakes - Bouncy Horse  
Iron Kettle - 2hp 6 Gallon Air Compressor  
Shop Cords - Hart 20 Volt Chainsaw & Charger  
Hedge Trimmer - Lot of Extension Cords  
Poulan Gas Leaf Blower - Hunting Stool  
Dr. Scale - Wooden Step Ladders - Step Stool  
Paint & Stain - Dip Nets - Draw Knife - Levels  
Hatchet - Wrenches - Door Knob Sets, New  
50# Hanging Scale - Camelback Trunk  
Nail/Screws - Light Bulbs - Cast Iron Train Set  
Circuit Breaker Finder - Pre-Lit Christmas Tree  
Pressure Cooker - Stock Pot - Flowers/Plants  
5' Bush Hog - Rake Wheels  
@ 156.6 hrs. Gravely ZT HD 60 Zero-turn Mower  
3pt. Pond Scoop - 5' 3pt. Brush Cutter  
Yard Dollie - Yard Wagon  
4' Yard Roller - Large Pet Carrier  
Brinly Yard Vac System, New Engine  
Fuel Cans - Iron Wheels - Stihl 55cc Tiller  
Scrap Iron - T-posts - Garden Pool - Firewood  
Landscape Stones - Lattice - Tamper

Pruners - Shepherd Hooks - 20' Log Chain  
Come-Along - 8' Wooden Ramps - 2 Wooden Sleds  
2 Kawasaki GT27B Straight Shaft Weedeaters  
Tool Organizer - Small Folding Table - Walker  
12' Werner Fiberglass Step Ladder  
8' Fiberglass Step Ladder - 10 Gal. Shop Vac  
2 Murray Terrain Bikes - FS 38 Stihl Weedeater  
Fishing Poles - Lumber, 2x & 1x  
Troybilt 21" Push Mower, Self Propelled  
2700 psi Pressure Washer - Lot Christmas Decor  
Blow-up Decor - Bird House - Cabinet  
Post Driver - Chicken Wire - Dog Waterer  
Tomato Cages - Seeder - Cow Bell  
30 Gal. Sprayer - Cross-Cut Saw - IOH Red Wagon  
Chicken Waterers - Canning Jars - Yard Aerator  
Chicken Coop - Rabbit Cage - Garden Hose  
Buck Knives - Puma Knife

**AUCTIONEER'S NOTE:** This merchandise is excellent quality. Very clean sale.

**See you there! - Tom**



**OWNERS: DR. JOHN & CAROLYN ELLIS**

ANNOUNCEMENTS AT AUCTION TAKE PRECEDENCE OVER PRINTED MATTER

## WULFF AUCTION

TERMS: CASH OR  
APPROVED CHECK -  
I.D. REQUIRED  
NOTHING REMOVED  
UNTIL SETTLED FOR

Licensed  
Appraisals

2334 Highway K, Salem, MO 65560

**AUCTIONEERS:**

Col. Tom Wulff • John Wisdom

Cell: 573-247-3884 • Cell: 573-247-9563 • Home: 573-729-8476

Clerk: Tracy Strange

Cashier: Nancy Inman

See Wulff Auctions at [www.thesalemnewsonline.com/auctions](http://www.thesalemnewsonline.com/auctions)



RAIN OR SHINE  
OWNER & AUCTION  
PERSONNEL NOT  
RESPONSIBLE  
FOR ACCIDENTS AT  
SALE SITE



# Firearms Auction

Saturday October 1st, 2022 • 10:00 a.m.

Doors open at 8 AM on Saturday

Sale Preview - Friday, September 30th • 6-9 p.m.

The Red Shed  
I-44 to exit 179 • 169 Truman St  
Doolittle, MO 65550

## SELLING OVER 300 FIREARMS

### SOME OF THE HIGHLIGHTS TO INCLUDE:

Winchester 1892's, 1894's, 1890's, 1895,

Winchester 94/22, 9410, Model 12's

Ruger Vaquero's, Single 6, Single 7, Single 10,

Ruger #3, 77's, 10/22 in .22 Magnum

Remington 870 LW, 700 Classic .280, 1100 NWTF 28 GA,

Remington 788 in .222 Cal, 1100 LW .410

Shotguns 2-Ruger Red Labels 20 GA

4-Browning Citori Lightnings

Franchi Renaissance Elite 28 Ga

Beretta 686 Silver Pigeon .410

2-Browning X-Bolt White Gold Medallions Unfired

Remington 1903 30-06

Spanish 1893 Carbine 7x57 Mauser

Polish VIS35 Radom, 9mm

Czech VZ24 8mm

Mauser C96 Broomhandle 7.63 Mauser

A small lot of ammo and misc. will sell after the guns.



# J & J Sales, LLC

Pictures on [www.auctionzip.com](http://www.auctionzip.com) (auctioneer ID #28053) • Pictures also available on [Hibid.com](http://Hibid.com)

573-341-5450  
Office

573-465-4647  
Julie Reagan

573-465-0642  
JD Roach, Auctioneer

573-762-2227  
Sale Day Number

[jjsalesllc12@gmail.com](mailto:jjsalesllc12@gmail.com)

**NEW ATF RULE** - For ATF Form 4473, current name & address must exactly match the photo ID such as drivers license. **MUST MATCH!!** If not, we need supplemental government issued documentation with matching current address such as vehicle registration, property taxes, county or city utility bill. Cannot be a PO Box!

Concessions by Mt. Olive Baptist Church

Terms of Sale: Sale day announcements supercede any and all printed material. Photo I.D. required for buyer's number. No buyer's premium. Payment accepted by cash, check, debit/credit card. There is a 3% convenience fee unless paid by cash or check. Nothing removed until settled for. All state and federal firearms regulations will be followed. Not responsible for loss or accidents.



# Sam CRAWFORD AUCTION SERVICE LLC

Due to the passing of my husband, Steve Webb, will sell the following located from Lowry City, MO North edge on Hwy. 13 to Hwy. C, then East 9½ miles (2½ West of Iconium, MO) Watch for auction signs.

## SATURDAY, SEPTEMBER 24<sup>TH</sup>, 2022 - 10 AM

### TRUCK - SNAP-ON TOOLS - HOUSEHOLD - MISC. - GUNS



#### GUNS - SELL AT 10 AM

Taurus Millennium 45 ACP  
Sears Roebuck 30-06 Bolt Action, Belgium  
Winchester 94 30-30  
Marlin Golders 39A, 22  
Marlin 22 Semi-Auto  
Winchester 120 20 Ga. Pump  
Mossberg 500A 12 Ga. Pump  
Remington 1100 12 Ga.  
(2) WWII Rifles 30 Cal.? (1 Marked M470 1943)  
30-40 Boxes Asst. Shotgun & Rifle Ammo  
Red Head Gun Safe - 20 Gun

#### HOUSEHOLD

Frigidaire Refrigerator  
Estate Electric Range, GE Dryer  
Conservator Washer (1 Mo. Old)  
2 Flat Screen TVs, 48" & 32"  
Oak TV Cabinet  
3 Pc. Bedroom Set - Full  
Queen Bed w/Metal Headboard  
Chest of Drawers & Armoire  
Twin Bed  
White Chest of Drawers  
Electric Treadmill  
Singer Electric Sewing Machine  
Reproduction Ice Box  
Roll Top Desk, Glider Rocker & Ottoman  
Recliner, Wood File Cabinet  
Hide-A-Bed Full Size, Like New  
Office Desk & Chair  
3 Oak Dining Chairs

Asst. Nic Nacs, Rubbermaid Storage Box  
Collectible Old Service & Owners Manuals  
Patio Table & 4 Chairs  
Wood Octagon Picnic Table

#### SNAP-ON

15-20 Snap-On Toy Cars & Truck  
Snap-On "Belair" Professional Tool Box - Extra Nice  
Snap-On Brake Lathe  
Snap-On Counselor II Analyzer  
Snap-On Wall Mount Puller Set  
Snap-On Solus Pro Analyzer  
Snap-On Plastic Storage Box  
Snap-On Rolling Tool Box  
Snap-On Tap & Die Set  
Large Lot Selection of Snap-On Wrenches & Sockets, Ratchets of All Sizes - Good Shape  
Other Misc. Snap-On Items

#### TOOLS

Miller Matic 35 Welder  
Older Airco HD Welder  
Automan Comm. Twin Cyl. Upright Air Compressor  
Cutting Torch - Complete  
3 Floor Jacks, Bottle Jacks  
AC Guages, 3-4 Log Chains  
Craftsman Upright Drill Press  
Grinder on Stand  
Electric Power Washer  
Wards Table Saw  
6" Vise  
Coleman 5000 Watt Generator

Older Generator  
Transmission Jack, Jack Stands  
Lg. Selection Electric & Cordless Air Hand Tools  
Lot Specialized Mechanic Tools  
Table Top Toolbox  
Long Handle Tools  
Wooden Ladder - Fiberglass Step Ladder - Aluminum Extension Ladder  
7' Tall Metal Storage Cabinet  
Wood Shop Stove, Wood Rack  
Small Window AC, 2 Air Tanks  
Bolt Bin  
Stihl 028 AV Chainsaw  
2 Husqvarna Trimmers  
Poulan Trimmer/Pole Saw  
Yardman Push Mower  
Troybilt Wood Splitter, 5.5 Honda  
Homelite Electric Pole Saw  
Pond Paddle Boat  
Craftsman 16HP Lawn Tractor  
JD Hydro 165 Lawn Tractor  
2 Oblong Galvanized Water Tanks  
3 Pt. BMB 7' Brush Cutter  
Bale Spike for Front Loader  
JD #9 Sickle Mower  
Lawn Sweep  
Wheelbarrow  
Open Front 4x8 Shed - To Be Moved  
60's Yamaha "Trailmaster" Motorcycle - Looks Good  
Gas Cans, Extension Cords, Gas BBQ, BBQ Bottle, Other Misc.

#### TRUCK - SELLS 12:30

'85 Dodge ½ Ton Shortbed, V-8, Auto, 4x4, Motor Overhauled, Bodywork & Ready to Paint

Good clean auction with lots of good Snap-On items. All well cared for & in good shape. Steve had Webb's Automotive since the 80's and was well known in a wide area. No inspection until sale day.

**Sam CRAWFORD Auction Service LLC**



TERMS: Cash or good check. Nothing removed until settled for. Not responsible for accidents. Lunch available. Statements made day of sale take precedence over printed matter. All items sell as is. No warranties given or implied.

**417-998-6629**  
Cross Timbers, Mo.

CrawfordAuctionService.com

Sam  
417-328-9137

Chase  
417-399-1904

Chance, CAI  
417-298-1751

Tom Poynter  
Jack Lancaster

## Kathy Webb & The Late Steve Webb

JoAnn's Printing 660-5472299



# ESTATE AUCTION

**SATURDAY, SEPTEMBER 17<sup>TH</sup> - 9:00 A.M.**

**Location:** 3345 Sunshine Rd., Hartville, MO **Directions:** From Hartville 4 Way  
Stop take Hwy 5 North approx 2.3 miles to Sunshine Rd. on Left go approx 1 mile, to  
 Auction on right. **WATCH FOR CHADWELL AUCTION SIGNS.** **Payment System:**  
 Cash • Debit Card • Credit Card (Debit / Credit Card Fee Will Apply) Checks approved  
 if known by auction company. **VISIT: WWW.CHADWELLAUCTIONS.COM**

**Owen & Beulah  
LONG**

**CASE 1845C SKID STEER  
w/ 6'  
BUCKET  
4100hrs**



**HUSQVARNA RZ4061  
46" ZERO TURN  
MOWER 346hrs**



**2000 CHEVY MALIBU 4 DOOR AUTO  
170,xxx MILES (loaded)**

## HOUSEHOLD

3pc Oak Dining Set includes Table w/Six Chairs  
 Hutch • Buffett • Accent Tables • Wooden  
 Shelves • Wall Mirrors • Linen • Area Rugs •  
 Large Lot of Wall Decor • Large Lot of Sewing  
 Notions • Oak Cabinet • Wooden Tables • Wall  
 Clocks • Domestic Sewing Machine & Cabinet •  
 (2) Sewing Chairs • Singer Sewing Machine w/  
 Cabinet • Upholstered Couch & Chair • Cherry  
 Coffee & End Tables • Floral Decor • Kitchen Aid  
 Mixers • Figurines • Curio Cabinet • Assorted  
 Lamps • Metal Twin Bed • Collie Dog Statue •  
 End Tables • Refrigerator • Books • Wing Back  
 Chair • Occasional Chair • Marble Cherry Coffee  
 & End Tables • Small Buffett • Corner Cabinet •  
 Sofa Table • Gun Cabinet • Oak Entertainment  
 Center • Leather Reclining Couch • Elephant  
 Decor • Fruit Decor • Whirlpool Side by Side  
 Refrigerator • GE Flat Top Stove • Pyrex • Correlle • Flatware • Assorted Kitchen  
 Appliances • Plates • Glassware • Bakers Rack • Small Oak Hutch • Hot Point  
 Washer & Dryer • Small Grandfather Clock • Cherry Entertainment Center • Oak  
 Coffee & End Tables • Amana Deep Freeze • Desk • Roll Top Desk • Leather Office  
 Chair • Whirlpool Gas Dryer • Other



**FORD 1000  
4spd Hi Lo  
Diesel 540  
PTO 1130hrs**



## ANTIQUES ~ COLLECTIBLES

Hall Tree • Ladies Hats • Cane Bottom  
 Chair • Old Pump Organ • Coo Coo  
 Clock • Porcelain Dolls • Wooden High  
 Chair • Doll Accessories • Raggedy  
 Ann & Andy • Singer Sewing Machine  
 w/Cabinet • Hall Tree w/Marble • Jesse  
 French Upright Organ • Bible Table •  
 White Sewing Machine w/Cabinet •  
 Leather Camel • Carved Upholstered  
 Storage Bench • Blue Carnival  
 Glassware • Marigold Glassware •  
 Pink Depression • Blue Glassware •  
 Bacon Press • Tea Pots • Large Lot  
 of Assorted Glassware • Grosset &  
 Dunlap Books • Oil Lamps • Fire King  
 • Barbie Dolls • Old Wood Cook Stove  
 • Cant Hook • Other



## SHOP ITEMS

Lincoln AC 225 Welder • Campbell Hausfeld 20gal Air Compressor on Wheels •  
 Acetylene Torch Set • Leg Vise • Grizzly Bench Grinder • Hand Grinders • Power  
 Tools • Nail Guns • Nut & Bolt Bins • Level Laser • Porta Cable Router • Dewalt  
 Sawzall • Milwaukee Drill • Assorted Tools • Socket Sets • Snap On Tool Box •  
 Dremel • 60pc Tap & dye Set • 12spd Drill Press • Wooden Work Benches • Metal  
 Work Benches • Bench Grinder on Stand • Central Machinery 6" Belt 9" Disc Sander  
 • Concrete Tools • Buffalo Metal band Saw • HD Chop Saw • Kozy World Heater  
 • Grizzly Disc/Belt Sander • Large Lot of Central Nailers • Roller Stands • Grizzly  
 Dust Collector • Craftsman 38" Wood Lathe • 20 Gallon Shop vac • Wood Clamps  
 • Dewalt Miter Saw • Pro Tech Miter Saw • Jack Stands • Electric Power Washer •  
 Chicago 6500 Portable Generator • 3 Ton Floor Jack • Other

## FARM ~ OUTDOOR ~ MISC

5' King Cutter • 3pt 1 Bottom Plow • Husqvarna 257 Chainsaw • Coolers • Large  
 Lot of Assorted Lumber • 6' Fiberglass Set Ladder • Hand Tools • Hand Sprayers •  
 Rope Fence Stretchers • Log Chains • 3pt Cultivator • 6' Angle Blade • 8' Drag Type  
 Bushhog • Mirafount 4 Ball Waterer • Trolling Motor • Park Bench • Troy Bilt Rear  
 Tine Tiller • 300 Gallon Fuel Tank • 500 Gallon Fuel Tank • Other

**AUCTIONEER'S NOTE:** Something for everyone at this Auction! Make Plans to Attend. **Thanks, Shawn**

**DRIVER'S LICENSE OR PICTURE I.D. REQUIRED • TERMS: CASH OR APPROVED CHECK**



**Chadwell**  
 Auction Service, LLC  
 www.chadwellauctions.com

Auctioneer:  
**SHAWN CHADWELL**  
 417-830-0209

Ringmen:  
 Weston Chadwell ~ 417-349-0727

Clerk:  
**SHELLY CHADWELL**  
 Cell: 417-880-8449

Cashiers:  
 Marla Chadwell • Emily Shaffer  
 Cassie Collins

## PROFESSIONAL SALES MANAGEMENT

LUNCH WAGON • APPRAISAL SERVICE • RAIN OR SHINE  
 All announcements made day of sale take precedence over any printed matter.  
 Not responsible for lost or stolen merchandise. Not responsible for accidents.



# KARLBERG ESTATE AUCTION

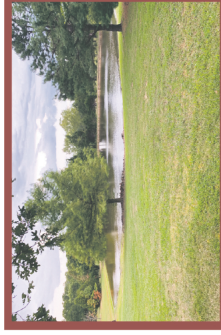
**SATURDAY, SEPTEMBER 17, 2022~10:00 A.M.**

## OWNER: ESTATE OF ELAINE KARLBERG

Due to the death of Elaine Karlberg, we, her family, will sell the following list of personal property to the highest bidder at auction located at 320 Hwy. M in Steelville, MO. From Cuba take Hwy. 19 south to Steelville approximately 8 miles to Hwy. 8. Turn right onto Hwy. 8 and go approximately 2.4 miles to Hwy. M. Go approximately 2.7 miles to residence located on the right. Follow BERTI AUCTION signs day of auction.

### REAL ESTATE-320 HWY. M, STEELVILLE, MO

320 Hwy. M, Steelville, MO, Crawford County-This 2 bedroom home has been meticulously maintained. It has 2 bathrooms, a dining room, and a utility room. It is located on Hwy. M but is well off the highway, is fenced, and has an electric, gated driveway to ensure your privacy. The home has covered front and back porches and a metal roof, as well as central air, electric furnace, and a wood stove. The property sits on a beautifully landscaped 7.01 acres with a pond and raised vegetable garden. In addition, there is a very nice, detached 2 car garage with a large workshop that also has heat and A/C. The 2 car garage has a covered concrete patio. As if that's not enough, you will also enjoy the 4 bay outbuilding with garage doors and a concrete floor. A 10% nonrefundable deposit is required on the day of the auction with the balance due within 30 days at closing. Interested bidders should contact Berti Auction Service to schedule a viewing of the property. RESERVE



### TOYOTA TACOMA

2020 Toyota Tacoma-5700 Miles, 4x4, Crew Cab, Tonneau Cover, Still Has Warranty-LOADED-RESERVE



### FENTON GLASS

150 Piece Fenton Glass Collection-NICE  
Showmen Fenton Glassware  
50 Pcs. White Crested Fenton Glass  
50 Pcs. Blue Fenton  
50 Fenton Ware Misc. Collectibles  
15 Fenton Ware Collectible Books  
Fenton, Fenton, and More Fenton!!



### ANTIQUES & COLLECTIBLES

8 Metal Antique Fire Trucks; Old Fire Truck Pictures; Shoe Shine Kit; Spectrum Train Set; Cast Iron Kettles; Oil Lanterns; Rail Road Lantern; 8 Pc. Frankoma 218 Dinnerware; Molded Pieces for Trains; Red Stemmed Glasses; Wine Goblets; 12 Pc. Noritake China Set-Complete; 8 Pc. Gibson China Set; 4 Jars Marbles; 1 Large Lot 78's and 45's-Elvis; Glen Miller, Very Old; Cuckoo Clock; 20 Antique Lures; Antique High Chair; 2 Antique Wall Clocks; Train Sets; Transformers for Train Sets; Ruth Canister Set; Ruth Spice Set





## TOOLS & MISC./LAWN & GARDEN

John Deere X350 48" Cut Riding Mower, Hydrostatic, 265 Hours; John Deere Broadcast Seeder-Small; John Deere Dump Cart; 2 Wood Working Tables with Wood Vises; DeWalt 20 Volt Cordless Set with Blower, Chain Saw, Hedge Trimmer, Drill, & Weed Eater-Like New; Shop Master Wood Lathe; Predator 4000 Watt Generator; Honda EX1000 Generator; Troy Bilt 2600 psi Gas Power Sprayer; Wood Tech Bits; 2 Full Bolt Caddies; Stanley Planers; Wood Chisels; Hand Saws; Weller Soldering Gun; Wood Working Tool Bits; Bungee Straps; 3-Way; Weber Grill with Cover; Barbecue Tools; Plastic Patio Chairs; Garden Sprinklers; Garden Fertilizer & Chemicals; New Jumper Cables; Broadcast Seeder; Shovels; Rakes; Garden Tools; Limb Clippers; 1 Lot Flower Pots; 3 Concrete Benches; Square; Werner 4 Ft. Fiberglass Ladder; 8 Ft. Fiberglass Ladder; 4 Ft. Levels; Gas Cans; 4-Way; Sewer Tape; FS461; Sthl Gas Weedeater; SM85-85 Blower; C-Clamps; 6 Vises; Post Hole Digger; Stanley Wheelbarrow; Little Red Wagon; Rakes; Dust Pan; Garden Duster; Shop Vac; Rakes; Wood Splitter; Shovels; Pitch Forks; Pick; Top Soil in Bags; Hoe; Scraper; 1 Lot Automotive Products; Small 100 psi Compressor; Nut Drivers; Oil Cans; Bottle Jacks; 1 Lot Open End Wrench Sets; Floor Jacks; Crescent Wrenches; Jack Stand; 3/8" Drive Socket Sets; 2 Ft. Step Ladder; Battery Charger; Peacock Statue; Shop Broom; Craftsman Electric Pole Saw; 1 Large Lot Flower Pots; Propane Weed Torch; Propane Tanks; Post Driver; Come-A-Long; Tractor Diesel Cans; Lawn Mower Jack for Blades; 10 Ft. Fiberglass Extension Ladder; Flue Brush; Chains; Rock Bars; Fence Posts; Concrete Fireman Statue; Bird Bath; Concrete Table with Benches; Concrete Basket; Hose Reels & Hose; Small Stihl Tiller; Craftsman Weedeater; Fire Nozzle; Leather Tools; Tap & Die Set; Hole Saw Bits; 1 Lot Metal Bits; 1 Lot Nuts & Bolts; Daisy BB Gun; 1 Lot Light Bulbs; Bird Feeder; Bird Feed; 1 Lot Painting Supplies; 2 Ortho Pump Sprayers; Hammers; Rubber Mallets; 1 Lot Pliers; Staples; Allen Wrenches; Craftsman Small Tool Box; Small Waterloo Tool Box; 1 Lot Screw Drivers; Tape; LED Flashlight; Tin Snips; Ratchet Wrenches; Rubbermaid Yard Cart; Nikon 7x35 Binoculars; Wood Rack

## HOUSEHOLD

Kenmore Refrigerator; Kenmore Upright Freezer; Oak Computer Desk with Chair; Wooden Bookcase; Maple China Cabinet; Oak Entertainment Center; Sony Flat Screen; Oak End Table Set; Leather La-Z-Boy Electric Recliner; 3 Pc. Living Room Set with Couch, Chair, & Ottoman; Oak Table with 6 Chairs & China Cabinet; Coffee Table; 2 Pc. Full Size Bedroom Set; 4 Drawer Oak Filing Cabinet; 5 Pc. Queen Size Maple Bedroom Set; Oak Book Case; China Cabinet; 2 White Porch Rockers; Magazine Rack; Child's Rocker; Bose Surround Sound; Pie Pans; Calphalon Turkey Roaster; 2 Bar Stools; Muffin Pans; Rice Cooker; Sewing Machine in Cabinet; 1 Lot Cookbooks; 1 Lot Books & Yearbooks; Boot Jack; 2 Ft. Step Ladder; Paper Shredder; Furniture Sliders; 1 Lot VCR Tapes; Chef's Choice Knife Sharpener; GE Microwave; Fuller Vacuum; Clothes Hamper; 1 Lot Christmas Decorations; 1 Lot Silk Flowers; Crock Pot; 1 Lot Kitchen Utensils; Cutting Boards; Blender; Rolling Pins; Sheet Cake Pans; Cookie Sheets; Place Mats; Kitchen Towels; Coffee Mugs; Measuring Cups; Stock Pot; Keurig Coffee Maker; 1 Lot Corning Ware; GE Toaster Oven; Mixing Bowls; Salad Shooter; Pots & Pans; Skillets; Baking Racks; Pizza Pans; Cake Plate; Rolling Clothes Hamper; Vases; Costco Step Ladder; Extension Cords; Rubber Boots; Cat Products; 1 Lot Hats; Cold Pack Canner; Sea Shells; Canning Jars; Radio Shack Scanner; 2 Trash Cans; Plastic Bins; AM/FM Radio; HP Computer; Oneida Silverware Set; Dyson Battery Vacuum; 100 Plus Cookbooks; Garden Books; Fireplace Tools; 1 Lot DVD s; 1 Lot CD s; Luggage; VCR/DVD Player; Bedroom Lamp; Quilt Rack; Oak Bookcase; Ironing Board; Rlecar Upright Vacuum; Black & Decker Iron; Serving Tray; Plastic Food Storage Containers

**AUCTIONEER'S NOTE:** This will be a great auction to attend with the opportunity to buy a very well maintained home and piece of property, John Deere equipment, HUGE selection of Fenton glass, and an almost new truck!! Don't miss this dandy in Steelville!! See Ya There! Robby

[www.bertiauction.com](http://www.bertiauction.com)

APPROVED CHECK OR CASH-ANNOUNCEMENTS  
MADE DAY OF AUCTION TAKE PRECEDENCE OVER  
ALL PRINTED MATTER- LUNCH SERVED-NOTHING  
REMOVED UNTIL PAID FOR-NOT RESPONSIBLE  
FOR ACCIDENTS-EVERYTHING SOLD "AS IS,  
WHERE IS"

*Berti Auction Service, LLC and Appraisals*

Col. Robby Berti, Licensed Auctioneer • Col. Meghan Berti, Licensed Auctioneer

7786 Seminary Rd., Sullivan, MO 63080

*Your trusted name in auctioneering since 1940*

573-468-5511





**BOATS-JEeps-MOTORCYCLE-MOTOR HOME-CAMPERS-TRAILERS-GUNS-TOOLS-MISC AUCTION****SATURDAY SEPTEMBER 17TH, 2022 • 10:00 AM****LOCATED: 480 LOST ACRES BLVD, LAMPE MO**

FROM HIGHWAY 13 &amp; H HIGHWAY IN LAMPE MO GO WEST ON HIGHWAY H 2.8 MILES TO H-20, TURN RIGHT, GO 1 1/2 MILES TO LOST ACRE ROAD, TURN LEFT ON LOST ACRES RD, GO 4/10 MILE TO AUCTION ON LEFT. FOLLOW SALE SIGNS, BREAKFAST &amp; LUNCH AVAILABLE

**FOR PICTURES SEE WEBSITE OR AUCTION ZIP.COM.****ONLINE BIDDING ON SELECT ITEMS AT MELTONAUCTIONREALTY.HIBID.COM****LETTER OF CREDIT ADDRESSED TO MELTON AUCTION & REALTY FOR PURCHASE OVER \$5000. NO GUNS ON PREMISES UNTIL AUCTION DAY. WE WILL START SELLING GUNS @ 10:00 AM****MOTORHOME-BOATS-JEeps-MOTORCYCLE-TRAILERS**

2007 CAMELOT MONACO 40 FT MOTOR HOME CUMMINS 400 HP MOTOR, 4 SLIDES, AWNINGS OVER EACH SLIDE, 3 A/C, WASHER/DRYER, UPGRADE SMART TV, CENTRAL VAC, DIGITAL SATELLITE FOR 2 RECEIVERS, CUMMINS ONAN GENERATOR, TRUE LINE LEVELING SYSTEM, AIR RIDE, NEW BATTERIES, 55,392 MILES-- 2016, 24 FT TRI TOON SUN CATCHER ELITE 324SS, POWER STEERING, ELECTRIC FRONT ANCHOR, 225 HP YAMAHA VMAX 4 STROKE, BIMINI TOP, IMMACULATE CONDITION 101 HRS--2015 BEAR TRI TOON BOAT TRAILER 2500 LB TANDEM AXLE--2000 RANGER BASS BOAT, 18 FT & TRAILER 681 HRS, NEW TIRES ON TRAILER, 2019 MERCURY 4 STROKE MOTOR 115 HP LESS THAN 15 HRS--2019 RANGER 521C BASS BOAT 21 FT, 2 LIVE WELLS, 2019 MERCURY 250 PRO XS, 2 BLADE POWER POLES 100 HRS, LOWRANCE HDS 12 DEPTH FINDER, LOWRANCE HDS 9 DEPTH FINDER, MINN KOTA TERROVA TROLLING MOTOR--SKEETER ZX202 BASS BOAT, YAMAHA 200 HP VMAX MOTOR, MINN KOTA EDGE TROLLING MOTOR, SKEETER TANDEM TRAILER--5' X 10' J-N ENTERPRISE TRAILER FOLDING RAMP ON REAR, 2' STEEL SIDES SINGLE AXLE--2021 EAST-WEST ALTA BUMPER PULL TRAVEL TRAILER 2850KRL, 1 SLIDE, 2 A/C, FIREPLACE, 21' ELECTRIC AWNING W/LIGHTS, KN SZ BED, 4 SEASON, ELECTRIC JACKS, EASILY SLEEPS 6, VERY NICE--2020 JEEP GLADIATOR RUBICON 4X4, 3.6 LITER ENGINE, 2 1/2" MOPAR LIFT W/FOX SHOCKS, FOX ATS ADJUSTABLE STEERING STABILIZER, RUBICON FRONT & REAR STEEL BUMPERS W/WARN WINCH, ARE COLOR MATCH CAMPER SHELL, COOPER DISCOVERER ST MAX ALL TERRAIN TIRES, 29,047 MILES--1977 JEEP RENEGADE CJ5, 304 V8 MANUAL 3 SPD, LEVI PACKAGE, WARREN WINCH W/POWER BRAKES & FUEL INJECTION, RHINO LINING, 43,010 MILES--1982 CJ8 SCRAMBLER FRAME OFF RESTORATION 350 FUEL INJECTION SMALL BLOCK, 5 SPD TRANSMISSION, WARN WINCH, A-1 CONDITION--1985 CJ8 SCRAMBLER 258 6 CYN W/4.0 HEAD FUEL INJECTED 5 SPD MANUAL--2021 HARLEY DAVIDSON 114 CC STREET GLIDE MOTORCYCLE, 748.5 MILES--2005 ROCKWOOD POP UP CAMPER 24' A/C & HEAT, 3 WAY FRIDGE, HEATED CLEAN MATTRESS CANVAS REPLACED 2 YR AGO, ELECT POWER TOP--2018 ALUMA 25' TILT BED CAR HAULER, 6 HOLE WHEELS, 5200 LB TANDEM AXLES W/TOOL BOX ON FRONT

**GUNS-AMMO-GUN SAFE-FISHING MISC**

1. TACTICAL SOLUTION PAC LITE 22 LR TS-17983; 2. FMK 9X19 S/N 9C1G2; 3. BENELLI CRIO BARREL 28 GA 2 3/4" S/N XA12555C15; 4. BENELLI CRIO BARREL 28 GA 3" S/N XA13461B16; 5. MONTANA BOLT GA 28 NOSLER S/N C19-2105; 6. ROCK ISLAND ARMORY 22 S/N TCM006072; 7. BERETTA OVER UNDER 20 GA 3" 686 SILVER PIGEON Z65331S; 8. FRANCHI ASPIRE 28 GA 2 3/4" S/N FF009905; 9. BERETTA AL391 URIKA 20 GA 3" S/N AA348638; 10. TACTICAL SOLUTIONS TAKE DOWN OWYHEE/TD22 S/N TSB100043; 11. TACTICAL SOLUTIONS 22 AUTO VORTEX 2X7 SCOPE S/N TSX11681; 12. HORIZON FIREARMS VORTEX SCOPE 3X15 6.5 CREED MORE S/N HRZ0527; 13. BERETTA OVER UNDER 686 28 GA 2 3/4" S/N Z92503S; 14. FRANCHI ASPIRE 410 GA 3" S/N FF009999; 15. TACTICAL SOLUTIONS X RING 22 TD-00704; 16. BERETTA 12 GA A400 EXTREME 3 1/2" S/N SAO22597; 17. BERETTA AL391 URIKA 12 GA 3" S/N AA110674; 18. BROWNING BOLT ACTION 25 WINCHESTER SHORT MAG W/VORTEX 3 1/2X10 S/N 17126MW351; 19. REMINGTON BOLT SS 308 MR5 BARREL

VORTEX SCOPE 4X16X50 S/N S6737067; 20. BERETTA 28 GA 2 3/4" A400 EXPLORE S/N XA142404; 21. FMK 9MM IN GOD WE TRUST MODEL 9C162 S/N BRO323; 22. FMK 9MM MOD 9C162 S/N BT3748; 23. BERETTA AL391 URIKA 20 GA 3" S/N AA335592; 24. 50 CAL BLACK POWDER MUZZLE MILLET T SCOPE 3X9X40 S/N 134968; 25. THOMPSON ENCORE 209X50 MAGNUM MILLET T SCOPE 3X9X40 S/N S119165; 26. BROWNING 300 WINCHESTER SS SHORT MAG S/N 21467M9354; 27. KELTEC 32 AUTO S/N 38539; 28. FMK 9C162 9MM S/N BGB0013; 29. BENJAMIN 5MM PELLET GUN; 30. WINCHESTER MODEL 59 12 GA S/N 80722; 31. FOX BSE SXS 12 GA S/N A402919; 32. WARD WESTERN MOD 60 12 GA PUMP S/N N/A; 33. WINCHESTER 94 GLD SPIKE 30-30 S/N GS12257; 34. REVELATION SS 20 GA S/N C566700; 35. WINCHESTER 94 CANADIAN CENTINENIAL 30-30 S/N 5522; 36. REMINGTON 742 30-30 S/N 259375; 37. HUNTMASTER MOD 33A .22 S/N N/A; 38. NEW ENGLAND HANDI RIFLE 243 S/N 212486; 39. MARLIN MOD 10 22 CAL S/N N/A; 40. HK FAB SC COMP LION 12 GA S/N 5008953; 41. H&R MOD 088 SS 410 S/N AZ417017; 42. SAVAGE MOD 24 SERIES P 22/410 S/N B907169; (3) VORTEX SCOPE 4X16X44 VIPER, 6X24X50 VIPER PST, 4X16X50; BROWNING PRO STEEL SAFE PUSH BUTTON ENTRY--SLIDE CONVERSION DOR 1911-22--(2) HERTERS SHOOTING BENCHES; CALDWELL SHOOTER STAND--SHOOTER STAND OUTERS VARMINTER RIFLE REST--CROSS BOW QUIVER OF ARROWS--2 BOXES 308 WINCHESTER AMMO, 60 BOXES 9 MM, 3 BOXES 6.5 CREEDMOOR 147 GR--CENTER POINT CROSS BOW--1 LOT DEER BLINDS--AMPED CROSS BOW--TREE STAND--X PRESS BOW TUNING MACHINE--ROD HOLDER--1 LOT FISHING EQUIPMENT--36 VOLT MINN KOTA TERROUR TROLLING MOTOR--24 VOLT MINN KOTA ULTERA--YAMAHA PROP--BOAT SEAT PEDESTAL CUSHIONS--(2) BOAT SEAT PEDESTALS--8 HP YAMAHA 4 STROKE MOTOR NO TITLE--EVINRUDE 45 OUTBOARD MOTOR--JOHNSON 18 HP OUTBOARD MOTOR--ARCHERY TARGETS--(20) SPIDER RODS & REELS

**TOOLS**

STIHL 026 CHAIN SAW--STIHL MS290 CHAIN SAW LIKE NEW--STIHL POLE SAW HT131 GAS--(2) 12 VOLT BATTERIES--HUSQVARNA 223L WEEDEATER--COUNTRY TUFF SPRAYER FOR ATV 12 VOLT--4 DRAWER TOOL CHEST--2 DRAWER TOOL CABINET--6" DELTA BENCH GRINDER--HOT SPOT FLOOR HEATER--FOLD UP ALUM LADDER--CAR RAMPS--CRAFTSMAN POWER WASHER 3000 LB--FLOOR JACK--PIPE WRENCHES--MISC TOOLS--FUEL CANS--(2) 5 GAL METAL GAS CANS--RUBBER MAID TOOL BOX--HOSE REEL--COMPOST TUMBLER--TRAILER HITCHES INSERTS, 1 ALUM

**MISC**

(2) 1981-1985 JEEP DOORS--2006 JEEP FENDERS & RUNNING BOARDS--1981-1985 SCRAMBLER HARD TOP & HALF TOP--YETI COOLER 50 QT--(3) CORDOVA COOLERS--65 QT COOLER--FISH COOKER--4 UNIT DOG CAGES W/HOUSES--(5) DOG CADDIES--DIAMOND DELUXE DOG BOXES--SHOEI BIKERS HELMET--(2) TREK BICYCLES LIKE NEW--1 LOT BAD LANDS BACK PACKS--TOYO AT 35X12.50X17 TIRE LIKE NEW--TONKA JEEPS--ERTL JEEP--MINIATURE HOBBY LINE HO SCALE MODEL TRAINS & TRACKS--CHATTANOOGA TRAIN SET (BACHMAN)--KAMMOCK PORTABLE HAMMOCK STAND NEW--KAMMOCK BACK PACKS, MOUNTAIN BLANKET, HAMMOCKS, TOTES ALL NEW

**OWNER: LARRY BAHR****"VERY LARGE AUCTION WITH EXCEPTIONAL MERCHANDISE, YOU WON'T WANT TO MISS"**

ANNOUNCEMENTS MADE ON SALE DAY WILL TAKE PRECEDENCE OVER ANY OTHER PRINTED MATERIALS. NOT RESPONSIBLE FOR ACCIDENTS OR LOSS OF ARTICLES ON OR NEAR SALE SITE.

**MELTON AUCTION & REALTY CO LLC****meltonauctionrealty.com | roger@meltonauctionrealty.com****Roger Melton | Nixa, Mo | 417-830-0153 or 417-725-1801****Brad Cole | Nixa, Mo | 417-840-2950****Tanner Foster | Galena, Mo | 417-840-5519**

6010726



# SMITH VALLEY

*Production SALE*  
SALEM, MO

## angus

*October 7th*  
2022  
1:00 P.M.

SVA *Ruby* 1593



SVA *Hattie* 1567



SYDGEN *Mary Blackbird* 6802



SVA *Rita* 8064



SVA *Center Fire* 1104



SVA *Regiment* 1504



*Smith Valley Angus*

SmithValleyAngus.com  
Kim 573-729-2910 • Brian 573-247-7165

Sale Managed By

Parker Friedrich  
**ANGUS**  
Marketing & Consulting

**WT**





# ESTATE AUCTION!

15466 HWY B COLE CAMP, MO

As I am selling my home and moving, I will sell the following at auction located from 52 Hwy on the east side of Cole Camp, go south ½ mile on B to auction on:

**SAT. SEPT. 24TH, STARTING AT 10AM!**

**PICKUP** 1998 Chevy S-10 LS super cab, 2.2 4 cyl 98k miles, nice truck  
**SHOP TOOLS AND EQUIPMENT** Grizzly floor model drill press, 5/8" \* Grizzly G1182 6" Jointer \* Grizzly G1035 1 ½ hp Shaper \* Grizzly G1037 13" Planer/Moulder \* Grizzly G7949 16" scroll saw \* Grizzly 6" double wheel grinder \* Ridgid oscillating edge belt and spindle sander \* Divilbliss 5 hp 20 gal air compressor \* Craftsman 12" Band saw/Sander \* Craftsman 4" Plate joiner \* Craftsman electric sander \* Craftsman dustless belt sander, 1 ½ hp \* Craftsman 1 hp 3" belt sander \* Kobalt 10" table saw w/stand assembly \* Chicago 12" Sliding compound miter saw w/lazer guide \* Bauer 20v cordless angle grinder, skill saw, ½" drill, palm sander \* Drillmaster palm sander \* Chicago Oscillating power tool \* Hitachi 18ga 2" air nail gun \* Banks 23 ga air pin nail gun \* 5" vise for Drill press \* Fortress 1 gal air compressor, 5hp \* Ryobi 1 ¾ router \* Bosch Colt 1 hp Palm router \* Drillmaster ¼" trim router \* Performax compact circular saw, 4 ½" \* Set pneumatic ½" impact, 3/8" ratchet, and sockets \* 7 pc Forstener bit set, Dewalt bits, Hole saw bits, steel bits, etc \* Jaw pullers, jaw corner clamps, furniture clamps, c-clamps, etc \* Hammers, screwdrivers, wrenches, vise grips, Sockets, Squares, levels, calipers, field gauges, etc \* Nails, screws, staples, pin nails, rivets, etc \* Electric planer, 7" Angle grinder, 3/8" \* Right angle drill, 4" Skilsaw, Chicago reciprocating saw, Chicago rotary hammer, Planer, etc \* Krause and Becker 5/8 hp airless paint sprayer \* Drillmaster 6" compact palm sander \* Platinum 6" dual action polisher \* Craftsman 16 Gal wet/dry vac \* Chicago electric chainsaw and saw sharpeners \* Masterforce hd shop stool \* Wall mounted extension cord winder/holder \* ¼" Narrow crown air staple kit \* Black and Decker portable air conditioner \* Keller Kpro KMT-22 Multi position ladder \* Franklin Working 40" platform step stool \* Several aluminum ladders \* Shop floor fan \* 2 Wheel dolly \* Schumacher 10 amp deep cycle charger \* Nut and bolt cabinets \* Concrete tools Note: The shop equipment has been taken care of very well, and most have the manuals with them.

**LAWN GARDEN AND PATIO** Cub Cadet ZTI 50" 0-turn mower, w/Kawasaki 23hp \* Grizzly electric 6.5 ton hydraulic log splitter \* DR leaf and lawn vacuum \* Troy Bilt Quantum 6.5hp pressure washer \* Stihl FS40C weed trimmer \* Stihl BG55 blower \* Stihl M5170 Chainsaw \* Remington Slinger RMZBP blower \* Max GreenWorks cordless limb saw \* Yardworks 42" de-thatcher \* Blue Hawk 85lb Seeder \* Craftsman YT4500 riding mower, deck needs repair \* Murray gas weed trimmer \* 2 Black and Decker battery trimmers \* Greenwood 4 gal backpack sprayer \* Nice metal patio table, 4 chairs

w/cushions \* Porch glider \* Rubber tired yard cart \* Rubber tired metal yard wagon with fold-up sides \* Old iron wheel wooden cart, Vintage wooden wheelbarrow and cart for decoration \* Misc garden tools  
**MISCELLANEOUS** Daisy BB gun, teal color, IOB \* Antique 3 drawer chest w/wooden knobs \* Several unique handmade bird houses \* 2 Golf club sets and bags \* Frigidaire window air conditioner \* ComfortGlow kerosene heater \* Drain cleaner, 115V-60hz 1/3 hp \* Fishing poles, tackle boxes \* Tackle inc: Jitterbugs, Lazy Ike, others \* 50' fish tape \* Tabletop charcoal grill \* Aged lumber, walnut and other



For pictures, check out the website [www.DrenonAuction.com](http://www.DrenonAuction.com)

**LORRAINE HAGSTON**

**Larry DRENON AUCTION**

Larry Laramie  
660-596-8515 660-221-4386  
Lacey Cooper  
660-723-1104 660-723-2221

Office: 660-723-6188  
[www.DrenonAuction.com](http://www.DrenonAuction.com)

**Terms:** Cash, approved check, credit/debit card (convenience fee applied on card purchases). Nothing to be removed until settled for. Not responsible for accidents. Statements made day of sale take precedence over printed material. Lunch served



# PUBLIC AUCTION

## 10 a.m. Saturday, Sept. 17<sup>th</sup>

Personal Property of Frank Wade

**Location:** 1709 Cantrell Dr., Licking, Mo. 65542 **DIRECTIONS:** **From Houston,** take Hwy. 63 north ten miles to BB Hwy., then go 3.5 miles to Cantrell Drive. **From Licking,** take Hwy. 63 south three miles to BB Hwy., then go 3.5 miles to Cantrell Drive. Watch for auction signs day of sale.

### ★ TRACTORS ★ TRAILERS ★ EQUIPMENT ★ MISC.



• 2550 John Deere Tractor with front end loader • Super M Farmall Tractor with new tires in good shape • International 2444 Tractor • 20-Ft. Flatbed Gooseneck Trailer • Reese Disc Mower, needs work • New Holland Disc Mower, needs work • Disc • Bolens 550 Series Garden Tiller • Delta Chop Saw • Stihl FS45 Weedeater • Stihl FS38 Weedeater • Craftsman



Band Saw • Small ATV Trailer • Tool Boxes with misc tools • Husqvarna Lawn Mower • Car Jacks • Six-thousand watt Generator • Wood Circulator • Minn Kota trolling motor • Boat Seats • Small Chicken House • 24" x 24" X 4' wood boxes • Sport Spring Shocks • Radiator and Fan • Misc Windows • Misc Scrap Piles • 3 Fish cookers •

### ★★★★ HOUSEHOLD ★ MISC ★★★★★



• Amana dryer • Dining room table and chairs • Leather recliner • Twin-size cot • Pyrex and misc. dishes • Several figurines • Electric wheelchair • Bed • Misc. not listed •



### ★★★★ GUNS ★★★★★

• Weatherby shotgun • Marlin 22 auto • Kahr 45 caliber pistol •

To see all pictures, go to [www.auctionzip.com](http://www.auctionzip.com)....auctioneer number 22112; or go to Facebook at Darren Scheets Auction Service.

**Auctioneer's note:** Come join us and see what we find that isn't listed. Auction to be larger than listing. Thanks, Darren and Jake

**TERMS OF AUCTION:** Cash or check with picture ID. If not known by the auctioneer you need to bring a bank letter of credit addressed to Scheets Auctions LLC. Nothing loaded or removed until paid for. Everything sells as is, where is. Not responsible for accidents, lost or stolen items. Auction day announcements take precedence over all previous advertisements. **LUNCH ON GROUNDS.**

## Darren SCHEETS AUCTIONS

(417) 457-6638 • (417) 926-8575  
[www.scheetsauctions.net](http://www.scheetsauctions.net)





# SOUTHERN MISSOURI NETWORK ASSEMBLIES OF GOD TREASURE SALE FOR MISSIONS *Auction*

## SEPTEMBER 29 & SEPTEMBER 30 AT 3:00 PM

### DOORS OPEN AT 1:00 PM DAILY

## Location: Cross Pointe Camp & Retreat Center 31434 Main St, Rocky Mount, MO 65072

### WE HAVE MANY ITEMS DONATED FROM THE COLLECTIONS OF MISSIONARY LEGENDS:

Victor Plymire – We have the authentic Tibetan Sword that belonged to him, and has been kept in the family for more than 100 years. This is an historic piece of mission history. • David Plymire – Possessions and collectibles that he has acquired over his entire life. Mostly items from Tibet and China. • George Flattery – Wood carvings, and collectibles from Africa. • Don Corbin – Beautiful paintings, and excellent wood carvings from Africa, including two elephants and a rhinoceros, and art by the famous South African artist, Dennis Murphy. There is also a huge painting from Kenya that is fabulous. It is the painting of a famous elephant. • John Weidman has donated many artifacts and collectibles from Africa. This includes an elephant foot, a python skin etc., along with his art from Africa. • Greg and Dana Beggs Regional Directors for Africa have donated an 8' elephant. It was carved from an acacia tree in Kenya. • A 2006 Harley Davidson Super Glide motorcycle, 1450cc fuel-injected. It has 55,000 miles, and is in excellent condition. • An aluminum boat donated by Carrol Deal. This boat is a 1976 DuraCraft 14'6" with an 8 horsepower Nissan engine. It is complete with trailer

and foot-controlled trolling motor, with a new battery. It has been freshly painted and is stunning. After painting, it has only been in the water twice. The trailer has also been painted. This boat has been in my family for more than 40 years. • Required safety equipment for boats. New, still in the package. • 2 almost new boat paddles, and an almost new 16-pound anchor. • We have several guns: At present we have two 50 caliber muzzle loaders, one of which is a flintlock. There is a Browning 270 lever-action with scope, a 1022 rifle, a 590 Mossberg pump, and two revolvers. One of them has never been fired. • A knife collection once owned by Rev. James McHaffie. • Several head of fattened cattle, to be sold by the half or by the quarter. • One hog. • 2 quality watches. • Native art from Alaska including a fossilized walrus jawbone knife, and jewelry from seal hide. • Collector cars and a curio cabinet combination. • A corner curio hutch. • More than 70 pieces of crystal. • Two beautiful antique dressers. One has a mirror. • Many beds and mattresses, various sizes including one sleep-number full-size. • And expensive putter, hardly used. • Home décor. • One small antique

table • A new queen quilt, hand-made • One hand-stitched quilt, antique • A Pioneer Woman basket filled with great items • A collection of Oswald Chambers books • Zane Grey and Louis Lamour books • One bedroom suite: a full-sized bed complete with headboard, and a matching 10-drawer dresser with mirror • Dale Earnhart Nascar soda collection • A sewing station • One left-handed tactical holster for a 9mm Beretta – new • New and used fishing poles and equipment • 1 Coleman portable cooker on wheels, new, still in the box • New camouflage fatigues • Hunting equipment • Hunting gear donated by Rev. Jack Moore • 18' Whirlpool refrigerator with icemaker, 5 years old, owned by Rev. Dean Galyen • 50" Panasonic television • 14 Branson tickets to various shows • Two one-night stays at Branson King Resort • 2 handmade quality leather purses • One gold ring with many small diamonds • One Ovation guitar 1999 model • New rotary sander • One case holding a Craftsman ½ inch 19.2-volt cordless drill-driver and a 3/8 inch, 19.2-volt right angle drill-driver both reversible, plus battery and charger • 3 new drill sets





# Real Estate and Personal Property Auction

## September 17th at 10A.M.

### 619 South Marshall ST., Marshfield, Mo. 65706



#### REAL ESTATE

Nice commercial building in a great location. Setting on .69 Acres with approximately 2400 Sf. of paved parking 1845 Sf. of store space with lots of different opportunities!!!

The taxes are only \$1,149 a year

If you are the winning bidder of the real estate, there is 10% Earnest money deposit due the day of the auction, with closing to be 30 days from the day of the auction.



#### EQUIPMENT/VEHICLES

Woodchuck woodchipper, Chevy Tahoe (for parts), Lincoln weld and power AC/DC, 2 Clark pallet jack.



#### OUTBUILDINGS

The outbuildings will be sold as well but it is the at the buyer's expense to move them.

One is a 9x12 with a porch, the other is a 10x20.

Also featuring building supplies, tools, store displays, shelving, furniture, steel piping and even new converse shoes.

With items being added all the way up to the auction. Make sure to find us on Facebook, Auction Zip or Go To Auction.com or give us a call at 417-207-5412 for more photos and information about our auction.



All items sold as is – where is. Accepted Payment Forms: Cash, Good Check, Credit, or Debit (3% added for credit & debit transactions)  
Check out our online listing at [www.auctionzip.com](http://www.auctionzip.com) — Auctioneer ID# 30607 or find us on Facebook!

# Joyce

Auctioneering  
& Real Estate



**JON JOYCE** Auctioneer, Licensed Agent | Lic. #200

(417) 859-2700 - Business | (417) 859-2724 - Fax  
(417) 207-5412 - Cell | [jjoyce24.jj@gmail.com](mailto:jjoyce24.jj@gmail.com)



**ROUTE 66 COOKBOOK: Hogs on Route 66, best food hangouts or road trips on Route 66 by Michael Wallis and Marion Clark, 195 pages, hardback, lots of color photos, \$10. 417-532-2045. Lebanon. (Leave message and phone number).**

#### WEATHERED BARN WOOD

**SIDING:** 10" wide. 573-729-7226. [www.pineridgerustic.com](http://www.pineridgerustic.com) Salem.

#### WE HAVE MOBILE HOMES:

Instock new arrivals (8) homes, need to go as soon as possible! 573-499-9993. [columbiadiscountnhomes.com](http://columbiadiscountnhomes.com)

**LOG SIDING:** 2X8 Pine/Western Cedar [www.pineridgerustic.com](http://www.pineridgerustic.com) 573-729-7226. Salem.

**USED MOBILE HOMES:** Call David at VILLA HOMES IN ROLLA 573-578-8072. Rolla.

**BUYING MOBILE HOMES:** Call David at VILLA HOMES IN ROLLA 573-578-8072. Rolla.

**WANTED TO BUY ANTIQUE CARS:** Convertible, Corvettes, unrestored, motors, parts considered. 870-324-1154. Ash Flat.

**NEW MOBILE HOME STOCK:** Just received (5) new units, they gotta go! 573-657-2176. [amegamobliehomes.com](http://amegamobliehomes.com)

**TRUE MODULARS:** 30 to 60 day delivery available, 3 and 4 bedroom 573-657-7040 [chateauhomes.net](http://chateauhomes.net)

**LIGHTLY EXPERIENCED GOLF BALLS:** \$3 a dozen. 417-818-3469. Strafford.

**I BUY.....used mobile homes.** Call or text 573-338-6250 or email [GregS.CDH@outlook.com](mailto:GregS.CDH@outlook.com)

## ONE OWNER, CUSTOM BUILT BRICK HOME SELLS TO HIGH BIDDER!



Very Well Cared For Ranch Style Home With Split Bedroom Design

Perfect Home For A Family or Retiree

3,000+ Square Feet, 3 or 4 Bedrooms & 3 Full Bathrooms

Finished Walkout Basement with Plenty of Storage Space

Located in a Beautiful Neighborhood Off Country Club Drive

*Also Selling Household Furniture and Accessories, Wood Working Tools, and Much More!*

**304 Monterey Drive  
Jefferson City, MO**

**Open House Dates:**  
Tuesday, September 13 | 12-1 p.m.

Tuesday, September 20 | 4:30-5:30 p.m.

**Online Bidding Ends:**  
Tuesday, September 27 | 12:30 p.m.

**Check It Out & Bid at  
AtterberrySells.com**

**Atterberry Auction & Realty Co...  
Your Real Estate Auction Specialists**



## 197 +/- Ac. Of Exceptionally Maintained Land Callaway, County

**Sells to High Bidder  
Regardless of Price**



**Offered In Two Tracts or Entirety  
Perfect For Horses, Cattle & Raising  
A Family! Wildlife Galore!**

**Tract 1:** 100 +/- Acres • Endless Trails for Exploring • Pond • Deer Stands • Beautiful Building Sites

**Tract 2:** 97 +/- Acres • 3 or 4 Bedroom, Well Cared For Family Home with Walkout Basement • Workshop • Pond • 2 Car Detached Shop • 2 Livestock Barns

#### Open House Dates:

Thursday, September 15 | 4-6 p.m.

Thursday, September 22 | 4-6 p.m.

#### Online Bidding Ends:

September 29th at 12:30 p.m.

**2707 County Road 228  
Fulton, MO (Millersburg Area)**

**Check It Out & Bid At  
AtterberrySells.com**



## Salem Livestock Auction

Hwy. 32 Salem, MO • 573-729-8880  
Over 40 Years in the Livestock Business

## Stock Cow Sale

Saturday, Sept. 17th @ 1pm

300 ALREADY CONSIGNED...

- 110 Black Cows, 4-6 yrs, 1/2 w/ calves, bal bred to Black Bulls
- 80 Hereford Cows, 4-6 yrs, 1/2 w/ calves, bal bred to Black Bulls - Complete SELL OUT
- 51 Cows mostly Black, 3-6 yrs, 15 w/ calves, bal bred to Black Bull - SELL OUT
- 10 Black Cows, 4-7 yrs, 3rd stage
- 49 Mix Cows mostly Black, 3-6 yrs, 2nd & 3rd stage, bred to Red Angus Bull
- 1 Reg Beefmaster Bull, 2 yrs
- 21 Mix Cows, 4-6 yrs, 2 w/ calves, balance bred to Black or Hereford Bulls
- 43 Black Cows, 4-6 yrs, 2nd & 3rd stage, bred to Black Bulls complete - SELL OUT

*We have 1 of the Best Markets in the Area  
Less Shrinkage = More Money in Your Pocket  
Farm Visits/Hauling Available  
Feed & Water Plans Available*

Cattle Sale - Every Monday at 12  
Feeder Calves to sell at 12  
Butcher & Stock Cows following

**All Consignments Welcome Up Until Sale**

Allen Thompson Renee Lauderdale  
417-932-4097 417-926-2682

Chuck Thompson Bryce Lauderdale  
417-257-5610 417-255-5124

Terms of Sale: Cash or Approved Check!







## PUBLIC AUCTION

Due to downsizing & selling our place, we will sell the following personal property at public auction, located from St. James, Missouri, take Hwy. B 6 miles north to Hwy. EE. Turn left and continue 1/2 mile to auction. Follow Lorts Auction Today signs on

### SATURDAY, SEPT. 17, 2022 AT 8AM

#### HUNTING & FISHING • FARM MACHINERY • HOUSEHOLD • TOOLS

**GUNS & AMMO** Taurus 44 mag revolver; Taurus 357 magnum revolver w/holster; Clamp-on pistol scope for 44; Shoulder holsters — Pistol cases; Mossberg 935 3.5 inch mag black synthetic; Mossberg 835 Ulti-Mag 3.5 inch chamber; Mossy Oak camo; Auto 5 Browning mag 12 gauge; Parker 16 gauge double barrel shotgun; Optima Pro .45 cal. muzzle loader; Ruger American .17 cal. bolt action HMR; Gun equipment — Shotgun & rifle cases; Scopes & shooting glasses; Cleaning supplies — Reloader & supplies; Shotgun shells; Ammunition (44 mag, 357, 16 gauge, 20 gauge, .17 cal); Muzzle loader bag & equipment; Shooting muffs — Shooting sticks; Shooting rest — Sight vise

**FARM MACHINERY & RELATED ITEMS** 8N Ford tractor w/3 pt., 12 volt (good rubber); 4 ft. 3 pt. King Kutter bushhog; 5 ft. 3 pt. King Kutter blade; Craftsman rear tine tiller; Weedeaters — Lawn spreader; Agri-Fab 15 gallon sprayer; Swisher 10.5 hp. 28 ton wood splitter; Troy-Bilt self propelled lawn mower; 16 ft. flatbed trailer w/title — Truck bed trailer

#### HUNTING & FISHING ITEMS, TOOLS, OUTDOOR/GARDEN EQUIPMENT, HOUSEHOLD, FURNITURE, ANTIQUES AND MANY MORE ARTICLES TOO NUMEROUS TO MENTION

**OWNERS: BILL & DIAN COOPER - 19255 STATE ROUTE EE, ST. JAMES, MO 65559; AUCTIONEER'S NOTE:** Bill is a lifetime outdoorsman. He travels and writes for many well known outfitters such as Bass Pro & Cabela's as well as many local newspapers. This is part of his lifetime collection of hunting and fishing equipment. This will be a dream auction for all outdoorsmen.. Auction held rain or shine!

**TERMS:** Not responsible for accidents or losses, should they occur. Nothing removed until paid for. No buyers fee. Lunch Served, ALL ANNOUNCEMENTS MADE SALE DAY TAKE PRECEDENCE OVER ALL PRINTED MATERIALS. Cash or check with photo I.D., No debit/credit cards.

**SALE CONDUCTED BY LORTS AUCTION SERVICE ST. JAMES, MO 65559**

**AUCTIONEERS:** Larry W. Lorts & Gary R. Lorts Licensed and Bonded • 573-263-1509 & 573-263-0243 "like" us on Facebook- Lorts Auction Service or view this auction on line at [www.threeriverspublishing.com](http://www.threeriverspublishing.com) or [Auctionzip.com](http://Auctionzip.com) (auctioneer ID # 42353)

**REGISTERED HEREFORD & ANGUS BULLS:** Home raised, Some Show-Me Select Qualified. 573-701-7828. Belgrade.

**CUSTOM SAW MILLING:** 417-533-4607. 417-664-1195. Lebanon.

**SLIGHTLY USED PUZZLES:** Will sell or trade. 417-818-3469. Strafford.

**LIONEL TRAIN SET:** Steam engine, tender, caboose and other car, track and transformer. \$195. 573-364-7465. Rolla.

**EARLY 1900's CAMEL BACK STEAMER TRUNK:** Oak, 5 strap, solid, nice condition. \$95. 573-364-7465. Rolla.

**TINY HOMES:** We gottem 573-881-3283



## MID MISSOURI STOCKYARDS

### REGULAR SALE EVERY THURSDAY 11AM

WATCH OUR WEEKLY SALE IN REAL TIME ON [DVAUCTION.COM](http://DVAUCTION.COM)

For Farm Visits, Market Updates, or Trucking  
Call Zach Cox 417-777-1320  
Dan Romine 573-578-4939

**Competitive Buyers!  
Competitive Commission!  
Competitive Market!**

Barn: 417-532-9292  
I-44 • Exit 123 "just outside of Lebanon"  
17505 Route 66, Phillipsburg, MO 65722  
For weekly market updates, visit us at  
[www.midmostockyards.com](http://www.midmostockyards.com)

**RUBBER & LEATHER BOOTS AND HIP WADERS.** Men's 11, Women's 7, some insulated. \$15-\$40 obo. 636-239-2695. Washington.

**AUSTRALIAN SHEPHERD PUPPIES:** 2 rounds of shots, tails & dewclaws done. Ready to go. Tris for \$150. 417-458-1047. Roby.

# HUGE ESTATE AUCTION

Thursday, September 22, 2022 **STARTS @ 9:01 AM**

Address: 34960 West 51st St S. • Mannford, OK 74044

**For More Info & Pictures**  
[www.chuppsauction.com](http://www.chuppsauction.com)

**TINY HOME, DUMP TRUCK, BACKHOE, BULLDOZER, SEMI TRUCK, HEAVY DUTY TRUCKS, TRACTORS, TRACKHOE, HORSE TRAILERS, ZERO TURN MOWERS, TRAILERS, WELDERS, AIR COMPRESSORS, IMPLEMENTS, CATTLE PANELS, OIL FIELD PIPE & PUMP JACKS, HORSE SADDLES & TACK, ARENA LIGHTS, FISHING SUPPLIES, SHOP TOOLS, AIR TOOLS, YARD TOOLS, FEED & WATER TROUGHS, HOUSEHOLD FURNITURE and FOSTORIA GLASSWARE**

**AUCTION STARTS @ 9:01 AM - LIVE ONSITE & ONLINE BIDDING ON LOTS 1-43 START @ 12:31PM**  
Estate of: RICK BARTLETT

**Auctioneer's Note:** Rick was a long time cowboy and Jack of all Trades who worked in Oil Field and Housing Construction. Lots of Household Furniture & Kitchen Items NOT PICTURED OR LISTED. We will be running 1 - 2 Rings ALL DAY! Don't miss out on this auction! Follow us on Facebook for updates or visit our website for pictures at [www.chuppsauction.com](http://www.chuppsauction.com)


**TERMS:** Cash - Credit Cards - Check with Proper ID - OK Sales Tax Applies unless exemption is shown. NOT RESPONSIBLE FOR ACCIDENTS. ANY ANNOUNCEMENTS DAY OF SALE SUPERSEDES PREVIOUS ADVERTISING.

## CHUPPS AUCTION & REAL ESTATE

**Stan Chupp**  
(918) 638-1157

**Dale Chupp, Realtor**  
Coldwell Banker Neokla Select  
(918) 630-0495

**Jonathan Miller**  
(918) 237-7582



## BUFFALO LIVESTOCK MARKET LLC

276 Hwy 32 West Buffalo, Missouri  
417-345-8122

### SPECIAL STOCK COW & BULL SALE

Tuesday, September 20th @ 6:30pm  
Expecting 250-300 Cows & Bulls

25 Blk. Bwf., Red Cows w/ 150-200 lb. Calves by side, nice set of pairs, Cows will be 4-7 yrs. old, only reason they're coming is out of feed.

20 Blk., Brangus X & Angus Cows, 6-SS, bred to Ultrablack Bull for March/April Calves.

15 Blk., Bwf. Cows, 3-5 yrs., bred to Angus Bulls.

15 Corriente Cows, 4-8yrs. old, 5 w/ calves, balance bred to Limousin Bulls.

30 Blk./Red Cows, 3-6 yrs. old, bred Blk. Bulls, 2nd & 3rd stage.

10-15 Purebred Beefmaster Heifers, Yearlings & Open, all out of top genetics from Cedar Creek Beefmasters, fancy & gentle.

2 1 to 1-1/2 yr. Blk. Bulls.

### MON-WED MARKET REPORT

Listen to KJEL 103.7FM • Lebanon or KYOO 99FM • Bolivar

**VIEW OUR SALES AT [CATTLEUSA.COM](http://CATTLEUSA.COM)**

**CALL FOR TRUCKING OR ON-FARM VISIT**

**533-2944**  
Lyle Caselman

**588-6185**  
Leon Caselman



# BUFFALO LIVESTOCK MARKET LLC



276 Hwy 32 W., Buffalo, MO

September 10<sup>th</sup>, 2022

Receipts: 1597 Head

Feeder Cattle Steady to \$5 Down.  
Cows & Bulls \$1-\$2 Lower.

## REPRESENTATIVE STEERS

300-400 @ 200.00 to 220.00  
400-500 @ 190.00 to 210.00  
500-600 @ 185.00 to 200.00  
600-700 @ 174.00 to 197.50  
700-800 @ 173.00 to 185.00  
800-900 @ 158.00 to 167.00

## REPRESENTATIVE HEIFERS

300-400 @ 175.00 to 220.00  
400-500 @ 170.00 to 208.00  
500-600 @ 165.00 to 180.00  
600-700 @ 157.00 to 173.00  
700-800 @ 152.00 to 166.00  
800-900 @ 137.00 to 152.50

## FEEDER BULLS

300-400 @ 165.00 to 212.00  
400-500 @ 165.00 to 190.00  
500-600 @ 160.00 to 181.00  
600-700 @ 155.00 to 167.00  
700-800 @ 140.00 to 157.50  
800-900 @ 120.00 to 130.00

## STOCKS COWS

Bred Cows 1100.00 to 1575.00  
Cow/Calf Pairs 900.00 to 1375.00

## SLAUGHTER BULLS

High Yield 105.00 to 120.00  
Low Yield 90.00 to 100.00

## SLAUGHTER COWS

Fleshy 84.00 to 90.00  
Med Flesh 82.00 to 95.00  
Thin Flesh 74.00 to 88.00  
X Thin Shelly 60.00 Down

\* Fleshy and/or Unweaned and Plainer  
Quality Cattle under this Market \*

\*Unweaned Cattle Trading Sharply  
Lower!! As Fall Health issues are taking  
hold early this year\*

\*Cow & Bull Sale Tuesday Night  
September 20th at 6:30pm. Watch our Ads\*

## MON-WED MARKET REPORT

Listen to KJEL 103.7FM • Lebanon or KYOO 99FM • Bolivar

VIEW OUR SALES AT CATTLEUSA.COM

CALL FOR TRUCKING OR ON-FARM VISIT

Lyle Caselman • Owner-Manager  
417-345-7876 • mobile 417-533-2944  
Leon Caselman • Owner  
417-345-4514 • mobile • 417-588-6185

## 3 GENTS WITTNAUER WRIST

WATCHES: 10k gold + 23J. All \$200. 573-764-3517. Call in P.M.

HARLEY FAT BOBS: Custom flame paint  
w/ gas caps + lines. \$100. 573-764-3517. Call  
in P.M.

## COLT REVOLVER DEALER

CATALOGS: Circa 1950's + 1960's. All for  
\$100. 573-764-3517. Call in P.M.

## 110 PORCELAIN POCKET WATCH

DIALS: Perfect for arts & crafts. \$100. 573-764-3517. Call in P.M.

1890 GOLD TESTING KIT: Glass acid  
beakers + antique wooden case. \$100. 573-764-3517. Call in P.M.

1970s KIDS METAL STOVE & FRIDGE:  
Nice Lithographic paint, 18" wide x 36" high.  
\$75. 573-364-7465. Rolla.

HARLEY 45 SOLO: factory rear brake  
drum + sprocket. \$150. 573-764-3517. Call  
in P.M.

HARLEY PANHEAD DISTRIBUTOR:  
original, chrome + complete. \$125. 573-764-3517. Call in P.M.

# Miller County

## REAL ESTATE & PERSONAL PROPERTY AUCTION

• SATURDAY, SEPT. 24, 2022 AT 10 AM •

**Auction & Property Location:**  
**233 Highway 87, Eldon, MO 65026**

Directions: From the north east edge of Eldon, MO take Highway 87 north  
2 miles to the Dummermuth property on the left side of the highway.

**THE REAL ESTATE CONSISTS OF 205 +/- ACRES OFFERED IN  
4 TRACTS RANGING FROM 4 ACRES WITH A BEAUTIFUL NEW  
SHOP, TWO HOMESTEADS WITH ACREAGE TO 109 ACRES OF  
PASTURE. THE PROPERTY IS LOCATED IN TOWNSHIP 42N,  
RANGE 15W, SECTION 22 OF MILLER COUNTY, MO.**









**PERSONAL PROPERTY INCLUDES:**  
**TRACTOR & FARM EQUIPMENT, PICKUP & ATV,  
LIVESTOCK EQUIPMENT, HAY BALES, FUEL TANKS & MISC.,  
PORTABLE BUILDING**





**Visit [wheelerauctions.com](http://wheelerauctions.com) for more information!**

**SELLERS: TRISTAN & JANA DUMMERMUTH**

# Wheeler

**AUCTIONS & REAL ESTATE**

23101 HWY. 24, PARIS, MO 65275 | 660-327-5890  
[WWW.WHEELERAUCTIONS.COM](http://WWW.WHEELERAUCTIONS.COM)

For more information call  
Charlie Nordwald  
at 636-795-4552 or  
[visit wheelerauctions.com](http://visit wheelerauctions.com).



**IMAGINE THE**  
*Endless Possibilities*  
**FOR YOUR LAND**

- Fence Line Clearing
- Land Clearing
- Road & Trails Opened
- Wood Lot Thinning

Local family owned and operated since 2007



**CALL NOW!**  
**417-718-5508**

**GREAT VIEWS**  
**BRUSH CLEARING**

Ben & Jessica Joiner  [www.gvbrush.com](http://www.gvbrush.com)

**1962 HARLEY SPORTSTER 900CC:** original distributor. \$50. 573-764-3517. Call in PM.

**DRAPES AND CURTAIN RODS:** Off-white, various sizes, \$15 for all obo. 636-239-2695. Washington.

**POLK COUNTY, MO. SESQUICENTENNIAL PHOTO ALBUM 1835-1985:** By George Hopper and James Sterling, \$25.00. 417-532-2045. Lebanon. (Leave message and phone number).

**LAKE OF THE OZARKS FALL SPECIAL:** Lots \$4,950 - \$125 down, \$69 per month. Beautiful trees, free lake access and boat ramps, lots are a short distance from the lake, no credit checks, owner financing, immediate possession or own for investment. **Also:** acreage tracts. Missouri conservation boat ramp with covered dock and rest rooms nearby. **Prices good through September 29, 2022.** Hwy 135 between Stover and Sunrise Beach, MO. Take Lake Road 135-12 to the Ivy Bend Land Office. Closed Tuesdays and Wednesdays. Call anytime. 573-372-6493.

**DARDEN PROFESSIONAL TIMBER HARVESTING, BUYING STANDING TIMBER:** Great prices, improve wildlife habitat and improve forest health. State Certified & Fully Insured! 573-247-4808. Salem.

**HEARTH CRAFT GLASS BI-FOLD FIREPLACE DOORS PURCHASED AT FORSHAW'S FIREPLACE:** Antique brass. \$160 obo. 636-239-2695. Washington.

**1500 VINTAGE WRISTWATCH DIALS:** \$100. 573-764-3517. Call in PM.

# CLINES EQUIPMENT Co., LLC FALL CONSIGNMENT AUCTION

20133 LAWRENCE 2220, AURORA, MO 65605

**Saturday October 1, 2022 • We are taking consignments NOW!**

Located 1 mile East of Jct. 60 & Hwy. 39 on US Hwy. 60 or .9 miles West of Bus. 60 On US Hwy. 60



**CONSIGN EARLY  
FOR MAXIMUM  
INTEREST IN  
YOUR ITEM!**



**FOR MORE INFORMATION CALL  
OFFICE 417-678-0049 or CELL 417-830-0912  
CLINESEQUIMENT@GMAIL.COM**

Pictures and additional listings may be seen at  
**HTTPS://WWW.AUCTIONZIP.COM/LISTINGS/**

**TRUCKING  
AVAILABLE  
IF NEEDED.**

**FOR SALE AKC BEAGLE PUPS:** Tri-color males & females. 8 weeks. \$300. 2 Lemon & white males 16 weeks. \$400 each. Shots & dewormed. 573-627-2309. Sullivan.

**CERAMIC CANISTER SET:** With cutting board that fits in kitchen counter-top. Various species of ducks on surface. Set \$30 obo. 636-239-2695. Washington.

**FIREPLACE LOG GRATE:** 28" in width. \$25 obo. 636-239-2695. Washington.

**5 GAL. PLASTIC BUCKETS:** with lids. \$3 each. 636-239-2695. Washington.

**POOL TABLES:** Installations, moves, recovers, repairs, accessories, etc. 573-646-1700.

## DELIVERING THE BEST IN EQUINE FEED

**WE KNOW YOU PUT A LOT OF TIME  
AND MONEY INTO YOUR HORSES.  
FEED THEM ONLY THE BEST WITH OUR  
EXTENSIVE LINE OF EQUINE FEED.**



**NOW OFFERING WEEKLY DELIVERY TO THE MOUNTAIN GROVE AREA!**

*Family owned and operated since 1950.*



**Hudson Feed & Grain**  
417-532-3921

316 W. Commercial St., Lebanon  
[www.hudsonfeedandgrain.com](http://www.hudsonfeedandgrain.com)





## WE BUY AND SELL new and used mobile homes



**(417) 501-1061**

**2 ILLINOIS 1927 LICENSE PLATES:** \$25 each. 573-308-5884. Rolla.

**TRAILER:** 6x10, single-axel flatbed trailer. \$500 or trade for anything. 573-734-2822.

## KEEPING YOU SAFE ON THE ROAD

*with brands like:*

**NEXEN**  
NEXEN TIRE

**YOKOHAMA**

**ATTEBERRY MFA  
TIRE & AUTO CENTER**  
333 E. BROADWAY • BOLIVAR, MO  
DUANE ATTEBERRY • 417-326-6286



**SLAB WOOD:** For Sale. \$10/bundle. 417-468-2255. Conway.

**ROUND TABLE:** With Leaf insert. \$325. 417-741-1232.

**WANTED:** Old Pinball Machines and Juke Boxes. 573-424-7200.

**FIREPLACE LOG GRATE:** 28" in width. \$25 obo. 636-239-2695. Washington.

## CALUS LOGGING

**20  
YEARS  
EXPERIENCE**

**Buying  
Standing  
Timber**  
Walnut & Oak

**CERTIFIED**

**Joe Calus, Owner**  
**417-926-4606 • MTN. GROVE**

## Buildings • Hunter's Cabins • Lawn Furniture



**JAMCO Portable Buildings**

800-688-2064 • 307 Enterprise Dr. • Seymour, MO • [www.jamcobuilders.com](http://www.jamcobuilders.com)

**Rent To  
Own Plan**

**AKC REGISTERED PEMBROKE  
WELSH CORGIE:** D.O.B. 7/02/22, U.T.D. on shots, very colorful, great breeding stock. \$600. 417-259-9738.

**HONDA 2017-4WHL:** forest green, excellent condition, drove 2 times, like new, manual shift. \$3,000 by appointment. Cell # 913-710-2554.

**CERAMIC CANISTER SET:** With cutting board that fits in kitchen counter-top. Various species of ducks on surface. Set \$30 obo. 636-239-2695. Washington.

## 0% for 4 Years



**HEATMOR**  
**Outdoor Wood  
Furnace**  
as low as **\$238** per month

**HEATMOR MIDWEST**  
Licking, MO 65542 • 573-674-2962

**1977 D6D BULLDOZER FOR SALE:** Good undercarriage, good machine. \$30,000. 336-466-2391. Falcon.

**1948 FORD COUPE:** \$1,500 or trade. 573-734-2822.

**FOR SALE:** White Dorper Ewe Lambs of various ages. 417-464-0002. Seymore.

## SHOP LOCAL FOR YOUR BULK GOODS NEEDS!



Canning Supplies, Deli Meat/Cheeses,  
Jams/Jellies, Candies/Chocolates, Fruits/Veggies

3294 St. Hwy. 73 • Buffalo, MO  
417-345-5100 • [@OurOrchardCountryStore](https://www.facebook.com/OurOrchardCountryStore)



# #1 AUCTION SOURCE IN CENTRAL MISSOURI

**SERVING 34 COUNTIES!**



**TO ADVERTISE YOUR AUCTION, CALL  
417-532-9131**

**WEEKLY  
TRADER  
MAGAZINE**

100 E. Commercial, Lebanon  
www.myweeklytrader.com  
www.facebook.com/myweeklytrader



**WINCO GENERATOR:** 25,000 watts, on metal 2-wheel trailer. \$2,000. Will consider offers. 417-259-1735.

**KITCHEN FAUCET MOEN:** Single lever, sprayer, new cartridge. \$45 obo. 636-239-2695. Washington.

**120 BRED COWS:** Late 2<sup>nd</sup> & 3<sup>rd</sup> period. 3-7 years old. 1, 250lb. Trucking available. 660-619-5190.

**15 Y/O BOY LOOKING FOR EVENING JOBS:** Leave a message. 724-815-5279. Hartville.

**CASE 1394 TRACTOR:** Cab with loader, has Case 1394 Tractor operator's manual. 1,448 hours. No air-conditioning. 90% Rubber. \$15,000. Will consider offers. 417-259-1735.

**LAKE OF THE OZARKS FALL SPECIAL:** Lots \$4,950 - \$125 down, \$69 per month. Beautiful trees, free lake access and boat ramps, lots are a short distance from the lake, no credit checks, owner financing, immediate possession or own for investment. Also: acreage tracts. Missouri conservation boat ramp with covered dock and rest rooms nearby. **Prices good through September 29, 2022.** Hwy 135 between Stover and Sunrise Beach, MO. Take Lake Road 135-12 to the Ivy Bend Land Office. Closed Tuesdays and Wednesdays. Call anytime. 573-372-6493.

**84 PETERBILT 359 LONG HOOD B MODEL CAT:** 15 speed transmission, good condition. Also, 2004 Wilson Cattle Pot: 53FT., triple axel. Would like to sell together. Contact Shane Leer 417-588-0602 or 417-589-2039. Contact in the evening.

**I AM LOOKING FOR LAND TO RENT TO GROW WHEAT:** I can pay a good rate per acre for land that is fairly level, decent soil and in a 30 mile radius of Marshfield. I am looking for 80-500 acres. 417-741-2288. Marshfield.

**IRON PIG CUSTOMS LLC:** Custom fabrication metal décor, automotive arts & CNC Plasma. 417-322-5827. Stoutland.

**LARGE ELIPTICAL:** \$130. Also, Electric Leg Massager + more. Good condition. \$50. 573-465-0386. Rolla.

**ROUTE 66 COOKBOOK:** Hogs on Route 66, best food hangouts or road trips on Route 66 by Michael Wallis and Marion Clark, 195 pages, hardback, lots of color photos, \$10. 417-532-2045. Lebanon. (Leave message and phone number).

**5 GAL. PLASTIC BUCKETS:** with lids. \$3 each. 636-239-2695. Washington.

**SENNHEISER E835S MIC:** With on/off switch and case. Never used \$65. 417-844-4319. Springfield.

**WE HAVE MOBILE HOMES:** Instock new arrivals (8) homes, need to go as soon as possible! 573-499-9993. columbiadiscounthomes.com

**A FRAME:** 11FT wide x 10FT tall \$400.  
3. John Deere 2-row corn planter \$400. 6FT Brushhog \$550. 3.5" Tubular Bale Forks \$400. 16FT Double Axle Trailer \$4,500. 8FT Truck Dump Bed \$700. 816-699-6851. Creighton.

**CHINA CABINET:** For Sale. \$125. Small Round Table. \$40. Poster Bed. \$175. 417-741-1232.

**GRAVITY WAGON:** 330 bushel, 20" truck tires, always shedded. Sharp. \$2,000. 573-378-5180. Versailles.

**WANTED YOUNG CATS:** Born bobbed tailed or tailless. 573-205-9415. Leave Message Will Return Call.

**3 METAL WOOD PLANES:** \$25 Each. Also, 3 Wooden Wood Clamps \$25 Each. 417-457-1023. Raymondville.

# GEAR UP

## FOR FALL WITH

# Huge Savings



**TRACTOR  
PACKAGES**

**0% FOR  
72 MONTHS**  
on ALL tractor packages



**WEEKEND  
WARRIOR  
PACKAGE**

**3038E** Compact Tractor  
+ Loader, Rotary Cutter  
& 18' Trailer  
**\$498/MO**



**HAY  
CLOSEOUT  
SALE**

**Low  
Financing**  
available on  
mower conditioners  
and balers

**SAVE 15%**  
OR MORE DURING OUR

*Winter Maintenance Sale*



**JOHN DEERE**



Scan For Savings



Restrictions Apply. See Dealer for Details. Offer Ends 9/30/22.



# YOUR FULL SERVICE AUTO BODY SHOP

**We do everything from insurance jobs to full restorations!**

**DAVIDSON'S**



**CUSTOM AUTO BODY**

*Call to schedule an appointment for estimates*



**417-288-1589 • 115 Lincoln St., Buffalo, MO • @DavidsonCustoms**

**LOG SIDING:** 2X8 Pine/Western Cedar  
www.pineridgerustic.com 573-729-7226.  
Salem.

**CATAHOULA LEOPARD PUPS:** 1 male leopard golden brown brindle, 1 female red merle. \$150. 417-543-4816.

**AUSTRALIAN SHEPHERD PUPPIES:** 2 rounds of shots, tails & dewclaws done. Ready to go. Tris for \$150. 417-458-1047. Roby.

**USED MOBILE HOMES:** Call David at VILLA HOMES IN ROLLA 573-578-8072. Rolla.

**BUYING MOBILE HOMES:** Call David at VILLA HOMES IN ROLLA 573-578-8072. Rolla.

**WWW.MYWEEKLYTRADER.COM**

**MUMS:** Mums at the Highpoint Greenhouse in Hartville. 9337 Warner Rd. 417-741-2198. Hartville.

**WEATHERED BARN WOOD SIDING:** 10" wide. 573-729-7226. [www.pineridgerustic.com](http://www.pineridgerustic.com) Salem.

**SLIGHTLY USED PUZZLES:** Will sell or trade. 417-818-3469. Strafford.

**TRUE MODULARS:** 30 to 60 day delivery available, 3 and 4 bedroom 573-657-7040 [chateauhomes.net](http://chateauhomes.net)

**RUBBER & LEATHER BOOTS AND HIP WADERS.** Men's 11, Women's 7, some insulated. \$15-\$40 obo. 636-239-2695. Washington.

**I BUY.....used mobile homes.** Call or text 573-338-6250 or email [GregS.CDH@outlook.com](mailto:GregS.CDH@outlook.com)

**REGISTERED HEREFORD & ANGUS BULLS:** Home raised, Some Show-Me Select Qualified. 573-701-7828. Belgrade.

## TAYLOR TRUCKS & EQUIPMENT

**417-924-2026 • 2676 Hwy. 5, Mansfield, MO**

**DANUSER DEALER**  
Intimidator Tree Puller

T3 Post Driver & Other Attachments  
New Mowers! Bush-Whacker, Big Bee  
Storage Containers & Dry Vans - 20' - 53'

**TRAILER PARTS & REPAIR**

**BUSH-WHACKER HD, SKIDSTEER BRUSH CUTTER**

Farm Tires, New Semi Tires, PTO's & Parts for Rotary Mowers, Farm Tractor Implements, Plows, Used 15" Bush-Whacker Now In Stock, Discs, and More Skidsteer Attachments: Pallet Forks, Buckets, Grapples, Hay Spears, RR Ties

**Bush-Whacker**  
**Heavy Duty Rotary Cutter**



**We Invite you To Come By & Look Us Over! Located 2.5 Miles North Of Mansfield, MO On Hwy 5**

## Pine Ridge Rustic

Log Home Building Supplies

### Services Offered!

- Installation
- Pre-finishing available on interior & exterior
- Dealer for exterior stains

[www.pineridgerustic.com](http://www.pineridgerustic.com)

**523 CR 2410 • Salem, MO 65560 • Ph: 573-729-7226**



- Log Siding
- Beveled Siding
- Car Siding • Red Cedar
- Western Cedar • Pine

**STORY & PICTURES BOOK OF OLD LINN CREEK:** Haha Tonka and Camden County, by T. Victor Jeffries, 72 pages. \$5.00 postpaid. (417)532-2045. (Leave message and phone number). Lebanon.

**1500 VINTAGE WRISTWATCH DIALS:** \$100. 573-764-3517. Call in PM.

**WANTED TO BUY ANTIQUE CARS:** Convertible, Corvettes, unrestored, motors, parts considered. 870-324-1154. Ash Flat.

**CUSTOM SAW MILLING:** 417-533-4607. 417-664-1195. Lebanon.

**NEW MOBILE HOME STOCK:** Just received (5) new units, they gotta go! 573-657-2176. [amegamobliehomes.com](http://amegamobliehomes.com)

**LIGHTLY EXPERIENCED GOLF BALLS:** \$3 a dozen. 417-818-3469. Strafford.

**LIONEL TRAIN SET:** Steam engine, tender, caboose and other car, track and transformer. \$195. 573-364-7465. Rolla.

**EARLY 1900's CAMEL BACK STEAMER TRUNK:** Oak, 5 strap, solid, nice condition. \$95. 573-364-7465. Rolla.

**1970s KIDS METAL STOVE & FRIDGE:** Nice Lithographic paint, 18" wide x 36" high. \$75. 573-364-7465. Rolla.

**3 GENTS WITTNAUER WRIST WATCHES:** 10k gold + 23J. All \$200. 573-764-3517. Call in P.M.



# YOUR LAND AND FARM EXPERTS!

## Dallas Co-40 Acres

**\$179,500**



This place is set up perfect for some great recreation! 40 acres of mainly timber, hills and draws. Lots of wildlife here, owner says tons of deer on the property. A box blind ladder stand will come with the property. There is a nice live creek on the property and always has water in it. This place is secluded and private, it's at the end of the road. There is a nice 5th wheel camper that will come with the property, it is just a few years old. It does have a salvage title, from some storm damage, but still a like new camper inside. It has a master bedroom up front, a nice bathroom with a stand-up shower. The finishes inside this Cougar RV are very nice. There is room for 4 to sleep here. The owner built a nice metal building around the camper, it has room for it and equipment. There is also a room behind the metal building that can be made into living space. Electric is to everything, and owner also put in a sewer system to handle everything. Only thing a buyer will need to do is drill a well. Comes with a portable building as well to keep outdoor tools in. Not far from Bennet Springs also Lead Mine Conservation area. This is what everyone is looking for, it will not last long! **Call Mike Stoner at 573-774-9775 Cell**

## Dallas Co-55 Acres

**\$225,000**



If you have been around Bennet Springs or the Niangua River, you have heard of Niangua River Outfitters (NRO) this property is on the same road and within rocks throw from one of their properties. Great place to build with electric

on the property and would make a great weekend getaway. Lots of deer here and no doubt will be a great hunting property. Has over a 1/4 mile of paved hwy frontage. Good ridges, with some low-lying areas with some creek drainages. Bennet Springs is 15 minutes away for fishing and canoeing fun. Properties like this don't come up often, seller has owned for a lot of years. **Call before it is gone!! Call Mike Stoner at 573-774-9775 Cell**

## Camden Co-33 Acres

**\$132,000**



Here is a nice 33-acre property within a few minutes from Laurie, Mo in Camden County. Property is very secluded and private. There is a nice trail leading back to the property off the main road. The land has everything needed for some good deer hunting. Some open fields that would make great food plot locations. Also has two wet weather creeks running through the property. There

is a trail running up through the timber to get to the north. I know this place is going to produce some great hunting. Close to the Lake of the Ozarks for your lake enjoyment. This property won't last long. **Call Mike Stoner at 573-774-9775 Cell**

## Camden Co-16.25 Acres

**\$64,900**



Properties like this are hard to come by now! 16.25 acres with Hwy frontage and within a few minutes to Lake of the Ozarks. Property is mainly all wooded with small field to the south. Property has a wet weather creek and would make a great spot for a lake. Electric along the highway and a couple

entrances already in place. This should make some good hunting land and the area is known for some good deer and turkey hunting. Brown Bend Lake access is just right up the road to put your boat in and out of the lake. 10 minutes to Climax Springs, Mo. Don't wait too long on this one! **Call Mike Stoner at 573-774-9775 Cell**

## Dallas Co-30 Acres

**\$179,500**



This is a great laying 30-acre tract just off Hwy 65 in Louisburg a couple miles. This land is all open and fenced for pasture and or hay ground. You won't find a better piece of property for building a new house or you could even crop

this land. Booth rd is the address and it is a paved road so no dusty road here. Springfield is less than an hour away. There is also deer here and lots of them. Set up a box blind here and you will see some good deer. Electric is available on the property. Owner has used it in the past to cut hay and it makes a lot of hay. **Call Mike Stoner for more information 573-774-9775 Cell**

**MISSOURI  
LAND  
COMPANY**

Farm, Home & Hunting Properties

**Rolla Office:**  
12647 S. Hwy 63, Rolla  
573-308-4868

**Cole Camp Office:**  
14981 Centerline Ave.,  
Cole Camp  
660-668-4868

**www.missourilandco.com • 660-668-HUNT**

**Toll FREE number for both locations 844-974-1850**



**WEEKLY  
TRADER  
MAGAZINE**

# YOUR AD GOES HERE!

**Add YELLOW Color  
For An Additional  
\$3 Per Reader Ad**

*All ads will include Phone Number (unless requested to be deleted by advertiser) and City Or Town, Phone Number with Area Code counts as one word. City or Town counts as one word.*

**RATE: 80¢ Per Word. All Classified Ads Require Payment Before Print.**

(1) 80¢	(2) \$1.60	(3) \$2.40	(4) \$3.20
(5) \$4.00	(6) \$4.80	(7) \$5.60	(8) \$6.40
(9) \$7.20	(10) \$8.00	(11) \$8.80	(12) \$9.60
(13) \$10.40	(14) \$11.20	(15) \$12.00	(16) \$12.80
(17) \$13.60	(18) \$14.40	(19) \$15.20	(20) \$16.00
(21) \$16.80	(22) \$17.60	(23) \$18.40	(24) \$19.20
(25) \$20.00	(26) \$20.80	(27) \$21.60	(28) \$22.40
(29) \$23.20	(30) \$24.00	(31) \$24.80	(32) \$25.60
(33) \$26.40	(34) \$27.20	(35) \$28.00	(36) \$28.80
(37) \$29.60	(38) \$30.40	(39) \$31.20	(40) \$32.00

## Place your Classified Ad TODAY!

**417-532-9131 • 800-665-8875**

**Fax: 417-532-8140**

**Or Mail To: P.O. Box 192 • Lebanon, MO 65536**

For your convenience we accept MasterCard, Visa, Discover or American Express



**DEADLINE FOR CLASSIFIED ADS: FRIDAY 4:00PM!**

Name \_\_\_\_\_

Address \_\_\_\_\_

City \_\_\_\_\_

Email \_\_\_\_\_

State \_\_\_\_\_

Zip Code \_\_\_\_\_

Phone \_\_\_\_\_

Ad Total \$ \_\_\_\_\_

X # Weeks \_\_\_\_\_

= Amount Enclosed \$ \_\_\_\_\_



**HARLEY FAT BOBS:** Custom flame paint w/ gas caps + lines. \$100. 573-764-3517. Call in P.M.

**2 ILLINOIS 1927 LICENSE PLATES:** \$25 each. 573-308-5884. Rolla.

**Larry Heisel Rentals**  
Have Rock? How about 3,500 lbs. of Hammer  
Call Larry! We Deliver!  
**573-779-1500**  
www.larryheiselequipment.com  
Rental Available in 636 or 573 area code

**COLT REVOLVER DEALER CATALOGS:** Circa 1950's + 1960's. All for \$100. 573-764-3517. Call in P.M.

**TINY HOMES:** We gottem 573-881-3283

**110 PORCELAIN POCKET WATCH DIALS:** Perfect for arts & crafts. \$100. 573-764-3517. Call in PM.

**WE BUY White Oak Logs!**

- ✓ Top prices for your logs
- ✓ Experienced log buyers
- ✓ Professional service

Chad Cook | Salem Wood Products  
**417.718.2950**  
5 miles north of Salem, MO on Hwy 19

**INDEPENDENT STAVE COMPANY**  
Log Procurement & Sales

[www.independentstavecompany.com](http://www.independentstavecompany.com)

**TRAILER:** 6x10, single-axel flatbed trailer. \$500 or trade for anything. 573-734-2822.

**1890 GOLD TESTING KIT:** Glass acid beakers + antique wooden case. \$100. 573-764-3517. Call in PM.

**1948 FORD COUPE:** \$1,500 or trade. 573-734-2822.

**ROUND TABLE:** With Leaf insert. \$325. 417-741-1232.

**HARLEY 45 SOLO:** factory rear brake drum + sprocket. \$150. 573-764-3517. Call in PM.

**FOR SALE:** White Dorper Ewe Lambs of various ages. 417-464-0002. Seymore.

**KENT**

**QUALITY ISN'T OUR GOAL. IT'S OUR GUARANTEE.**

For more than 90 years, generations of producers have put their trust in Kent. And we've delivered with consistent quality, breakthrough innovations, and proven results.

**Built on Trust**  
EST. 1927

kentfeeds.com

**YOUR TRUSTED SOURCE FOR QUALITY FEED & FARM-LIFE ESSENTIALS**

Portable Feed Bins Ready For Your Farm!

**Kropf Feeds**

**"DOING BUSINESS ON OUR WORD AND A HAND SHAKE"**  
Located in the Heart of the Amish Mennonite Community!  
417-345-8600 • 19 Prairie Lane, Buffalo

# WE SELL LAND



CONTACT YOUR LOCAL LAND SPECIALIST TO LEARN MORE ABOUT  
BUYING AND SELLING HUNTING, FARM, RANCH AND TIMBERLAND.

**BRIAN W. UTECHT**

SOUTHWEST MISSOURI SALESPERSON, LAND SPECIALIST

**417.766.5595**

BRIAN.UTECHT@WHITETAILPROPERTIES.COM

**MISSOURI'S TOP LAND SPECIALIST  
FOR THE LAST 8 YEARS.**



**WHITETAIL PROPERTIES REAL ESTATE**

HUNTING | RANCH | FARM | TIMBER

**WHITETAILPROPERTIES.COM**



Whitetail Properties Real Estate, LLC DBA Whitetail Properties, DBA Whitetail Properties Real Estate, in the States of Colorado & North Dakota DBA Whitetail Property Real Estate LLC. Licensed in CO, MN, ND, SD, TN & VA - Jeff Evans, Broker Licensed in FL, KS, MO, OH & PA - Jefferson Kent Gibson, Broker Licensed in TX & NM - Jimmy Hollingsworth, Broker Licensed in WV - Ed Miller, Broker Licensed in AL, GA, LA & MS - Todd Stewart, Broker Licensed in TN - Tim Brummett, Broker Licensed in TN - David Pritchard, Broker Licensed in KY - Anthony Christian, Broker Licensed in NC, SC, VA, Ohio, Canada, Broker Licensed in IA, NC - Richard F. Dought, Broker Licensed in MI - Edward Joel Newmark, Broker Licensed in IL, MD, WV - Debbie S. Lutz, Broker Licensed in ID, MT, OR, UT, WA, & WY - Aaron Miliken, Broker Licensed in NY - John Myers, Real Estate Broker, Licensed in OK - Dean Anderson, Broker Licensed in KY - David Fisher, Broker, Licensed in OH - Jeremy Schaefer, Principal Broker, Licensed in NE - Jason Schmitt, Broker





**ORDER YOUR NEW CHEVY, BUICK OR GMC  
TODAY AND GET EXACTLY WHAT YOU WANT.**



**WE WANT  
YOUR TRADE.**

**NEW SHIPMENTS  
ARRIVING.**

**ED MORSE  
CHEVROLET  
BUICK GMC**

**ROLLA**

FORMERLY FAIRGROUNDS AUTO PLAZA

**NEW NAME. SAME TEAM.**

100 Fairgrounds Rd., Rolla, MO

**573-364-1002**

[EdMorseChevroletBuickGMCRolla.com](http://EdMorseChevroletBuickGMCRolla.com)