

**FREE - TAKE ONE!**

Vol. 29 No. 7

**MAY 12, 2022**

800-543-8271 • 800-665-8875

# **T** WEEKLY **TRADER** MAGAZINE



Find us on  
Facebook

@myweeklytrader  
AUCTIONS PG. 7

**VISIT OUR NEW WEBSITE! MYWEEKLYTRADER.COM**

## **ED MORSE** COLLISION CENTER

**RollaCollision.com**

FREE ESTIMATE'S, CAR RENTAL AVAILABLE.  
I-CAR, ASE, ALUMINUM WELDING AND  
REPAIR CERTIFIED TECHNICIANS.

**WE WORK ON ALL  
MAKES AND MODELS.**

100 Fairgrounds Rd., Rolla, MO

**888-248-0335**

### **OUR REPAIR SERVICES**

COLLISION REPAIR	WINDSHIELD REPLACEMENT
PAINT REPAIRS	PAINTLESS DENT REPAIR
ALIGNMENTS	FRAME WORK
DENT REPAIR	BUMPER REPAIR
WELDING	FULL FRAME STRAIGHTENING
SCRATCH REMOVAL	ACCIDENT RELATED MECHANICAL REPAIRS



**WE WANT  
YOUR TRADE.**

**NEW SHIPMENTS  
ARRIVING.**

**ED MORSE**  
**CHEVROLET**  
**BUICK GMC**

ROLLA

FORMERLY FAIRGROUNDS AUTO PLAZA

**NEW NAME. SAME TEAM.**

100 Fairgrounds Rd., Rolla, MO

**573-364-1002**

EdMorseChevroletBuickGMCRolla.com

# Land

For Sale

Dallas Co., Mo • 520 Acres +/-



## \$1,720,000

- Private and secluded retreat; legacy property in the making
- Stocked spring-fed lake with multiple springs throughout the property
- Many food plots have been established and the wildlife is abundant
- Home set up for entertaining large family gatherings
- Excellent property for a corporate retreat; clients and associates will cherish the time they spend here
- Bennet Springs State Park is a popular attraction only 20 minutes away



### WHITETAIL PROPERTIES REAL ESTATE

HUNTING | RANCH | FARM | TIMBER

**Brian Utecht | 417-766-5595**

[Brian.Utecht@whitetailproperties.com](mailto:Brian.Utecht@whitetailproperties.com)

[WHITETAILPROPERTIES.COM](http://WHITETAILPROPERTIES.COM)

Missouri's Top Land Specialist in 2014, 2015, 2016, 2017, 2018, 2019, 2020 and 2021



# TIME FOR PRECISION

Hustler's residential mowers are built stronger and perform faster, allowing you to quickly maneuver around obstacles with ease. Tackle your lawn in record time with unparalleled precision, and use the time you save to do the things you love.



## AGRI-ENTERPRISES

For Outstanding Products & Service

1-1/2 Miles South Of Licking, MO On Hwy 63

573-674-2203 • 1-800-653-7152 • www.agri-enterprises.com

**HISTORY OF ST. ALBANS, MO. : H.B. \$20. 417-532-2045. (leave message and phone number). Lebanon.**

**WEATHERED BARN WOOD SIDING: 10" wide. 573-729-7226. www.pineridgerustic.com Salem.**

**LOG SIDING: 2X8 Pine/Western Cedar www.pineridgerustic.com 573-729-7226. Salem.**

**AVAILABLE STOCK MOBILE HOMES:** Immediately, double wide and single, 3 and 4 bedroom 573-499-9993 columbiadiscounthomes.com


**STOCK MOBILE HOMES AVAILABLE:** We gottem, single and double, 3 and 4 bedroom! Call Tuffy 573-657-2176. amegamobilehomes.com

**I BUY & SELL GRAIN BINS: All sizes and conditions. Price depends on size and condition. Please call 573-280-5638. Sunrise Beach.**

**VOTED #1 BEST Preowned Car Dealership**

### TIM'S USED CARS

(573) 341-3828 • 1334 South Bishop (Hwy. 63) • Rolla, MO  
Next to Hwy CC • www.tims-used-cars.com

	<b>2006 DODGE 3500 LARAMIE</b> Quad Cab, Dually, 4x4, 5.9 Diesel, Auto, Loaded w/ Options <b>Only \$16,900</b>		<b>2017 FORD EDGE SEL</b> FWD, 4 Cyl Auto, Loaded w/ Options, 66,xxx Miles <b>Only \$22,900</b>
	<b>2014 NISSAN FRONTIER SV</b> Ext Cab, 4x4, 4.0 V-6, Auto, 101,xxx Miles <b>Only \$16,500</b>		<b>2012 INFINITI QX56</b> AWD, 5.6 V-8, Loaded w/ Options, 151,xxx Miles <b>Only \$17,800</b>

**LARGE SELECTION OF CARS, TRUCKS, SUVs & VANS!**

## KUSTER LOGGING

**BUYER of Standing Timber Oak and Walnut**

**Dozing Now Available**

**417-259-0047**

**References Available**



**THE ILLUSTRATED HISTORY OF TIPTON, MISSOURI: 1858-2008, hardback, 528 pages, excellent condition. \$50. 417-532-2045. (Leave message and phone number). Lebanon.**

**USED MOBILE HOMES:** Call David at VILLA HOMES IN ROLLA 573-578-8072. Rolla.

**BUYING MOBILE HOMES:** Call David at VILLA HOMES IN ROLLA 573-578-8072. Rolla.

**6FT 3-POINT BOX BLADE:** \$650. 573-765-4406. Richland.

**COMPLETE CONCRETE CONTRACTOR**

- Flatwork • Fencing
- Driveways • Backhoe & Skidsteer Work

**LUTTRELL CONSTRUCTION AND CONTRACTING LLC**

**CALL 573-578-7371**



**DRAPES AND CURTAIN RODS:** Off-white, various sizes, \$15 for all obo. 636-239-2695. Washington.

**WANTED TO BUY ANTIQUE CARS:** Convertible, Corvettes, unrestored, motors, parts considered. 870-324-1154. Ash Flat.

**WANTED TO BUY DODGE DIESEL TRUCK:** Or Toyota Tacoma. Also, buying antique cars. 870-324-1154. Ash Flat.

**WANTED:** Old Pinball Machines and Juke Boxes. 573-424-7200.

**TRUE MODULARS:** 30 to 60 day delivery available, 3 and 4 bedroom 573-657-7040 chateauhomes.net

**REGISTERED HEREFORD & ANGUS BULLS:** Home raised, Some Show-Me Select Qualified. 573-701-7828. Belgrade.

**CUSTOM SAW MILLING:** 417-533-4607. 417-664-1195. Lebanon.

**Your Friend In The Field**

*Reliable equipment, fair prices and outstanding service you can count on season after season.*

**SALES • SERVICE • REPAIR**



**STAHLMAN POWERSPORTS** 1387 S. BISHOP AVE., ROLLA  
573-364-6944   
WWW.STAHLMANPOWERSPORTS.COM

**BAD BOY**

**TINY HOMES:** We gottem 573-881-3283

**COOKING FROM QUILT COUNTRY:** Hearty recipes from Amish and Mennonite Kitchens, HB, 202 pages. \$6.50. 417-532-2045. (Leave message and phone number). Lebanon.

**I BUY.....used mobile homes.** Call or text 573-338-6250 or email GregS.CH@outlook.com

**DESPERADOS OF THE OZARKS BOOK:** Bonnie and Clyde, Lynchings and Hangings, Ozark Feuds & more, 224 pages. \$6.50. 417-532-2045. (Leave message and phone number). Lebanon.

**FAINTING GOATS:** Non-Jumping. Small Size Pet. Variety of colors & patterns. 100% pure bred. Check website www.greenacresvillage.com or text 573-216-7796 for more info. Lake of the Ozarks.



**KENT**



**QUALITY ISN'T OUR GOAL. IT'S OUR GUARANTEE.**

For more than 90 years, generations of producers have put their trust in Kent. And we've delivered with consistent quality, breakthrough innovations, and proven results.


**Built on Trust**  
EST. 1927

kentfeeds.com

**YOUR TRUSTED SOURCE FOR QUALITY FEED & FARM-LIFE ESSENTIALS**

**Portable Feed Bins Ready For Your Farm!**



**Kropf Feeds**

**"DOING BUSINESS ON OUR WORD AND A HAND SHAKE"**  
Located in the Heart of the Amish Mennonite Community!  
417-345-8600 • 19 Prairie Lane, Buffalo

**FIREARMS:** Professional Repair, Restorations and Appraisals. Baron's Gunsmithing. 573-363-5801. Camdenton.

**200 SQUARE BALES GRASS HAY:** No rain. \$4.50 per bale. 573-308-5884. Rolla.

**FIREPLACE LOG GRATE:** 28" in width. \$25 obo. 636-239-2695. Washington.

**LIONEL TRAIN SET:** Steam engine, tender, caboose and other car, track and transformer. \$195. 573-364-7465. Rolla.

**LOOKING FOR WILD PIGEONS:** Will pay for them. 660-553-2333. Cole Camp.

**GREAT DANE PUPPIES:** AKC. Fawn/Brindle Puppies. www.GreatDanes4U.com 417-859-0844. Marshfield.

**Buildings • Hunter's Cabins • Lawn Furniture**



**JAMCO Portable Buildings**  
800-688-2064 • 307 Enterprise Dr. • Seymour, MO • www.jamcobuilders.com

**Rent To Own Plan**

**CALUS LOGGING**

**20 YEARS EXPERIENCE**

**Buying Standing Timber**  
Walnut & Oak

**Joe Calus, Owner**  
417-926-4606 • MTN. GROVE

**CERTIFIED**

**KITCHEN FAUCET MOEN:** Single lever, sprayer, new cartridge. \$45 obo. 636-239-2695. Washington.

**POOL TABLES:** Installations, moves, recovers, repairs, accessories, etc. 573-646-1700.

**2008 NOMAD 150:** 17 1/2 foot, fully contained. \$7,800. 314-972-2903. Mineral Point.

**CERAMIC CANISTER SET:** With cutting board that fits in kitchen counter-top. Various species of ducks on surface. Set \$30 obo. 636-239-2695. Washington.

**TRUCKERS & LOGGERS:** Keep your Diesel engines running smooth this winter by adding Diesel plus. Extends the life of injectors and fuel pumps. For more info. Call 417-241-3653.

**BUTLER LOGGING:** Buying standing timber, red oak, white oak & walnut. Highest prices paid. 417-448-9323. 417-630-4000. Grovespring.

**HAVING A RUN ON FAINTING GOAT BUCKLINGS:** Selling at a DISCOUNT! Breeder Buck, 6 year old, Beechheld lineage, blue eyed, polled, peacock pattern. Text or call 573-216-7796. Lake of the Ozarks.



**Meadowview Dutch Market**

**Call to Order**  
417-993-3017

Discount & Surplus Groceries • Prices Subject to Stock on Hand

Sale Dates May 11<sup>th</sup> 2022 to May 17<sup>th</sup>, 2022 while supplies last!

**DELI SPECIAL**

**LIGHTING JACK CHEESE**..... REG. \$5.65 LB. .... SALE \$5.15 LB.

**TAVERN HAM**..... REG. \$4.99 LB. .... SALE \$4.49 LB.

**TRY our Fresh Homemade DELI Sandwiches: TURKEY, HAM, ROAST BEEF, ITALIAN, BLT'S, PULLED PORK AND BLT PULLED PORK (MADE YOUR WAY)! COME IN OR CALL to order! ALSO Custom Deli trays! Veggie OR FRESH Meat-N-Cheese!**

<p><i>Premium Plain</i> <b>Greek Yogurt</b></p> <p><b>99¢</b> 32 OZ. <b>50¢</b> 16 OZ. <b>\$1.99</b> A CASE</p>	<p><b>10% OFF All Bulk Snack Mixes</b> Excludes Big Bags</p>	<p><i>Neapolitan</i> <b>Ice Cream</b></p> <p><b>99¢</b> 56 OZ.</p>	<p><i>Hot</i> <b>Ham</b></p> <p><b>99¢</b> APPROX. 8 LB.</p>
<p><i>Fully Cooked</i> <b>Meatballs</b></p> <p><b>\$1.89</b> 14 OZ.</p>	<p><i>Steeped</i> <b>Coffee</b></p> <p><b>\$2.40</b> 8 CT. REG. PRICE \$4.80</p>	<p><i>Hard</i> <b>Salmi Ends and Pieces</b></p> <p><b>\$1.99</b> LB.</p>	<p><i>Fully Cooked</i> <b>Popcorn Chicken</b></p> <p><b>\$2.50</b> LB.</p>

**SMOOTHIE TIME!**

**10% OFF Frozen Fruit!!!**

**Blackberries, Pineapples, Strawberries, Raspberries, Tart Cherries, Apples & More!!!**

**MEADOWVIEW DUTCH MARKET**  
417-993-3017 Hours: Mon-Thurs 8-5pm  
Fri 8-6pm • Sat 8-5pm  
23 Miles West on Hwy 64 • Right on T Hwy  
9 miles • Left on E Hwy 1 mile on Left

**NOW ACCEPTING CREDIT, DEBIT CARDS & EBT**

**DUTCH COUNTRY STORE, LLC**  
573-378-4395  
Hours: Mon-Thurs 8-5pm  
Fri 8-6pm • Sat 8-5pm  
5 miles East of Versailles off Hwy C on Kelsay Road

**RUBBER & LEATHER BOOTS AND HIP WADERS.** Men's 11, Women's 7, some insulated. \$15-\$40 obo. 636-239-2695. Washington.

**GERMAN SHEPHERD PUPPIES:** AKC registered, black/tan, 4 males – 1 female, vet checked, UTD shots, wormer. Both parents on premises. \$800 each obo. 8 weeks old. 660-522-0234. Barnett.

**BLACK LEATHER JACKET:** Mossi Motorsports, zip out liner, excellent condition, extra large. \$75. 417-457-1023. Raymondville.

**365 FOUNDATION QUILT BLOCKS BOOK:** Hardback, 352 pages, excellent condition. \$7.50. 417-532-2045. (Leave message and phone number). Lebanon.

**HEAVY DUTY 5,000 LB MACK BRAND FLOOR JACK.** New in carry case. Only \$65. 573-364-7465. Rolla.

**8-GALLON HORIZONTAL AIRCOMPRESSOR:** New. \$85. 417-457-1023. Raymondville.

**450C JOHN DEERE HI-LIFT: \$8,200.** 636-232-7480. DeSoto.

**WANTED: Small male chihuahua** breeding age dog. 417-250-0986 or 417-349-6076. Mtn. Grove.

**40 2<sup>ND</sup> & 3<sup>RD</sup> PERIOD COWS:** 3 to 7 years old, 1250 to 1300 lbs, dewormed, vaccinated, preg checked. Also 80 head of fall calving cows. Trucking available. 660-619-5190. Otterville.

**IHC 140:** 1972 w/ full cultivators. \$4,500. 417-259-2121. Vanzant.

**JD 400 GROUNDER MIXER:** \$2,500. 417-259-2121. Vanzant.

**WELSH CORGI PUPPIES FOR SALE**



Tri-Color and Red and White Puppies!  
**CALL OR TEXT 573-578-9499**

**HEARTH CRAFT GLASS BI-FOLD FIREPLACE DOORS PURCHASED AT FORSHAW'S FIREPLACE:** Antique brass. \$160 obo. 636-239-2695. Washington.

**DARDEN PROFESSIONAL TIMBER HARVESTING, BUYING STANDING TIMBER:** Great prices, improve wildlife habitat and improve forest health. State Certified & Fully Insured! 573-247-4808 or 573-739-1122. Salem.

**GILSON LAWMOWER:** Triple paint in original color, needs motor and assembly. \$195. 573-364-7465. Rolla.

**NEW 24" INSIGNIA LED TV:** In box, \$40. 210-787-8222. Linn Creek.

*The Blue Butterfly*

**FLEA MARKET & VARIETY STORE**

- ANTIQUES • COLLECTIBLES
- VINTAGE • OLD TOOLS
- AND MUCH, MUCH MORE

Open Most Days 10-4  
Hwy 65, Cross Timbers, MO.   
Call Teresa for questions • 417-296-3292



**Splash Sale**

**0% FINANCING**

	1023E + Loader <b>\$950 OFF</b>
	3025E + Loader <b>\$750 OFF</b>
	4044M + Loader <b>\$750 OFF</b>



 **JOHN DEERE** | *Heritage* TRACTOR

**HeritageTractor.com**

Restrictions Apply. See Dealer for Details. Offer ends 6/4/22.

**SCAN FOR MORE INFO**



# REAL ESTATE & FARM AUCTION

# Auction

## SATURDAY MAY 21, 2022 @ 10AM

### REAL ESTATE SELLS AT 12 NOON SHARP

**Location: 12575 Co Rd K-514, Ava, MO 65608 • Estate of Otis Bell**

Directions: From Ava, take Hwy 14 West approx 2.6 mi. Turn North on K Hwy. Travel 2.5 mi to Co Rd 514. Turn right and continue 1.4 mi. Auction is on left. Watch for signs!

#### REAL ESTATE

Rare opportunity in Ava, MO!! Nearly 80 acre cattle farm/horse ranch with a great mixture of pasture, hay fields and timber. The ranch style 3 BR, 3 BA home sits toward the center of the property and provides great privacy and amazing views of the land and abundant wildlife. This property also has stocked ponds and a large horse barn approx. 110'x65' with stalls, tack room and an indoor arena.

#### AUTOS, ATV, RV, TRACTOR, LAWN MOWERS

2001 Gulf Stream Ultra Supreme RV (VIN 5B4KP37J8Y3326262) • 1995 GMC Extended cab Z71 • 1990 Chevrolet 1500 2WD • John Deere X300 Lawn mower • John Deere X350 Lawn mower (33 hrs) • Power Craft lawn mower • Murray Lawn mower • 1989 Bumper pull stock trailer (14-16') • Massey Ferguson 65 tractor • Kawasaki Prairie 650 ATV 4x4 • Craftsman Signature 2000 lawn mower

#### SHOP TOOLS, POWER TOOLS, OUTDOOR EQUIPMENT

Brimly lawn sweeper • Napa 12 V battery charger/jump starter • Craftsman 5 hp 25 gal air compressor • 3- 6' step ladders • 4- 2 wheel dollies • 2 full rolls of Red brand barb wire • 2- 5' utility trailers • 6' angle blade • Craftsman 10" 3 hp table saw • Stihl MS 170 chainsaw • Poulan model 3816 chainsaw • Bostitch

coil nail gun • Dewalt 8" angle grinder • Milwaukee 3/8" drill • TroyBilt 32 cc leafblower • Echo PB 1000 leafblower • Dewalt 18 V drill • Echo GT200R weed trimmer • 2 ton jack stands • 5 gal portable air tank • 4 ton come along • Numerous log chains • 1 ton chain hoist • 2- Craftsman 75-125,000 BTU propane heaters • Numerous propane bottles • Bottle jacks • Aluminum ATV ramps • Lifetime folding picnic table • 3 pt bale spike • Numerous gas cans • 5' 3 pt brush hog • 2- Antique scythes • Live trap • Misc hand & garden tools • Numerous used t posts • 4" & 6" bench vise • Craftsman tool box • Craftsman wrenches & sockets • Power Kraft 1/2 hp bench grinder w/ stand • Stack on tool box • Coleman Powermate generator • Briggs & Stratton tiller • Extension cords • Work benches • Antique cream cans • Antique wagon wheels • Wishing well • 3/4 & 1" sockets • Large open end wrenches • General electric chest freezer • 2 hp 4 gal pancake air compressor • 25 ton log splitter (Yard Machine) • Snapper push mower • Wet/dry shop vac • Approx 6 rick of dry firewood 3 ton floor jack

#### HOUSEHOLD ITEMS AND FIREARMS NOT YET LISTED!



SCAN ME!



Scan with your phone's camera to be directed to our website for more photos and info!

**FOR MORE PHOTOS, VISIT OUR WEBSITE CHEYNEAUCTIONS.COM OR FIND US ON FACEBOOK!**

**Auctioneer's Note:** Great piece of real estate with acreage! Perfect for farmer, rancher, or outdoorsman. Good variety of well cared for personal property! You won't want to miss. Come spend the day with us. Food and restrooms available. Thanks, Travis  
**Real Estate Terms:** 10% down day of auction w/ bank approval letter.



### Cheyney Auction Company, LLC

Real Estate • Livestock • Farm & Ranch • Equipment • Household • Antiques  
**Travis Cheyney, Auctioneer • Buddy Boyd, Ringman**  
**417-543-8751 • cheyneyauctions.com**

ANNOUNCEMENTS Made Day Of Sale By Auctioneer Take Precedence over any Printed Matter. Not Responsible For Accidents. All items sold as is, where is, with no guarantee. Terms of sale: cash, credit/debit card, or check with valid ID

# ON-SITE ONLY PERSONAL PROPERTY AUCTION

SATURDAY MAY 21, 2022 @ 10:00AM

3263 South State Highway 125 • Rogersville, MO 65742

## INVENTORY LIST:

- |   |  |   |
|---|--|---|
| Four bedroom<br>two bath<br>fireplace<br>central heat<br>Refrigerator<br>Stain glass lamps<br>Lots of figurines<br>and dolls<br>Steins and<br>collectibles<br>Or chemical<br>sprayer<br>CB<br>Bob wire two<br>wheel dolly<br>Chain saw<br>Lincoln welder<br>Gas cans<br>Lots of camping<br>equipment,<br>hand tools,<br>tools<br>Pots & pans<br>China, China<br>cabinet<br>Crock water jug<br>Washer and<br>dryer<br>Wooden boxes<br>Shelving<br>Ladder | Crock jug<br>Barbell weights<br>black and decker<br>grinder<br>Red stove grill<br>Storehouse<br>toolbox<br>Heavy extension<br>cord<br>3 jaw puller set<br>Old carpenters<br>toolbox<br>King craft work<br>lights<br>Yard tools<br>Fence post driver<br>Bench grinder<br>Booms<br>Tackle box full of<br>tackle<br>Craftsman drill<br>press<br>5 gallon<br>galvanized<br>igloo cooler<br>Craftsman<br>handtools<br>Bench vise<br>Battery charger<br>Craftsman<br>GT 5000 | lawnmower<br>Coleman lantern<br>Bolt cutters<br>Buffet<br>Phone<br>Bull horns<br>Old wooden<br>chest<br>Wooden cabinet<br>Wooden dresser<br>Small drop leaf<br>table<br>assortment<br>teddy bears<br>Dresser<br>Samsung TV<br>Rocking chairs<br>Vintage fan<br>Dayton pedestal<br>fan<br>Coleman Procat<br>heaters<br>12x18 storage<br>building<br>Trailblazer<br>propane<br>lantern<br>Wet bike<br>Smoker grill<br>Yard cart<br>Ammo boxes |
|---|--|---|



FOR MORE INFORMATION GO TO [WWW.EASTERLYAUCTIONCO.COM](http://WWW.EASTERLYAUCTIONCO.COM) OR CALL EASTERLY'S AT 417-833-9494



Mike Easterly Auctioneer • 417-833-9494

Not Responsible for accidents or theft. For more information call: Easterly Auction Company, Springfield, MO. Auction Terms: Visa, Mastercard, Cash, Cashier's check or checks with proper I.D. Announcements day of sale take precedence over printed material. Auction Notes: Although information is obtained from sources deemed reliable, auctioneer makes no warranty or guarantee expressed or implied. Buyers should themselves take the opportunity to make their own inspection prior to sale.

[www.EasterlyAuction.com](http://www.EasterlyAuction.com) • [auctionzip.com](http://auctionzip.com) ID#14770





# AT THE RANCH

A BAR RANCH - CLAREMORE, OKLAHOMA  
SATURDAY - MAY 14<sup>TH</sup> - 12 NOON



## 700 HEAD SELL!

COMMERCIAL PAIRS • BRED HEIFERS • BRED COWS

### PAIRS

- 20- Angus heifers with Angus sired spring born calves at side.
- 40- Angus 3 to 5 year old cows with spring born Angus calves.
- 20- Red Angus 3 to 5 year old cows with spring born calves.
- 20- Brangus pairs 3 to 5 year old cows with spring born Angus calves.

### BRED COWS

- 100- Heavy bred Angus & Brangus 3 to 5 year old cows safe to quality Angus bulls.
- 40- Heavy bred Red Angus 3 to 5 years old safe to Angus bulls.
- 40- A Bar Ranch Fall calving heifers safe to Express Ranch 4-star calving ease Angus bulls & Schilling Ranch Angus bulls.
- 200- Angus Fall bred northern ranch dispersal 3 & 4 year old cows safe to sons of Connealy Consensus.
- 150- Angus Fall bred 3 & 4 year old cows safe to Hinkson & Schilling Ranch Angus Bulls.
- 45- Brangus Fall bred cows 3 to 5 years safe to Hinkson & Schilling Ranch Angus Bulls.

Merrit 918/607-6808  
Turner 918/697-6717  
Office 918/342-2225

For pictures, videos, or information  
give us a call!

view sale at [Live Auctions TV](#)  
[www.abarranch.com](http://www.abarranch.com)



Directions: 8 Miles east of Claremore on hwy. 20 Turn south on 4230 road, follow Ranch signs.

# PUBLIC AUCTION

## Saturday May 14, 10:00 AM

**Location:** 118 County Road 7260, Caulfield, Mo. From West Plains take 160 West approximately 16 miles to left on 101 travel 1 mile to right on County Road 7260 then 2/10 mile to farm on left.



### TRACTORS - HAY EQUIPMENT - FEED TRUCK

2018 Kubota M6-111 cab, loader, 2700 hours, 4x4, 110 HP, 24 speed powershift, radial tires, one owner and garage kept; 2008 Kubota M8200, 4x4, open station w/canopy, 3400 hours, 80 HP; Vermeer 604 Super M mega wide 4x6 round baler net wrap, Massey Ferguson Hesston 1359 mower conditioner 9' cut, Vermeer VR1022 8 wheel high capacity V rake, 2019 Krone 4 basket hydraulic raise w/self-leveling hay tedder, New Idea 4150 side delivery rake, 2005 Ford F-450 4x4 XL dually diesel w/Kelly Ryan feed mixer mounted digital scale setup and rear spike (new injectors) excellent setup.

### ATTACHMENTS - TRAILERS - FARM

1995 Gooseneck brand 20'x6' gooseneck stock trailer, Pro-Tank 500 gallon pull type sprayer, portable cattle semi-loading chute, Grain-o-Vator self-unloading PTO driven hydraulic grain wagon, 12' John Deere disc, 12' pipe plus field roller, 2-front combine tires mounted on rims, My-D-Hand-D gravity feed box, 3-galvanized stock tanks, 12' grain auger, lots of misc steel, scrap iron, 13- 18' steel feed troughs, 5- round bale feeders, steel grates, chains, binders, Danauser 3pt post driver, misc tools, shop supplies.

### HOUSEHOLD - COLLECTIBLES - FURNITURE

Antique Oak claw foot side-board, oak dressing stand, Antique wardrobe, 4-piece living room set, sofa, recliner, lots of cast iron several pieces, hand-painted hurricane lamp, collection of popular mechanics 1940-1951, Tom Sawyer and Becky collectable dolls w/COA and boxes, curved oak claw foot glass curio cabinet, catnapper leather dual reclining couch, leather recliner, slide-top coffee table, drop-leaf table, glider rocker, antique rocking chair, lamps, lot of wall décor, oak picture frames, wash bowl w/stand, oak gun cabinet, Christmas décor, ten chrome chairs, misc. pots, pans, dishes, set of china, small pie safe, 1920 Anheuser-Busch wood box w/original bottles, graniteware, typewriter, 101 Café Holmes cash register, lanterns, Christmas décor.



**AUCTIONEERS NOTE:** The Williams's have sold their farm and downsizing, lots of good clean household items. All equipment is in top shape and field ready! Tractors and hay equipment have been barn stored, most items will be one owner and well kept! Make plans to attend this fine auction.

**Owners: Jack and Connie Williams**

## BILLY SEXTON AUCTIONEERS

683 Missouri Avenue, West Plains, MO • Office: 417-255-2744

Billy Sexton 417-257-4595 • Ark. License # 2749 • [www.sextonauctions.com](http://www.sextonauctions.com)

Justin Kraft 417-274-0073 • Ark. License # 2745

# ESTATE AUCTION

**Sunday, May 15th, 2022 ~ 1:00 PM**

**LOCATION: 600 Walnut, Golden City, MO; GPS Will Get You There  
(Watch For Signs)**

## Auction For Johnny Shaw



### Antique, Modern Furniture & Appliances

Ant China Cabinet, Ant Drop Front Secretary, Lg Ant Cedar Chest, Ant High Boy Dresser, Ant Wood Shelf, Ant Adult & Child's Rockers, Ant Dresser W/Mirror, Ant Full Bed, Ant Wood Highchair, Ant Ice Cream Chair, Ant Metal High Stool, Ant Metal Yard Chairs, Old Porch Glider, Ant & Prim Mirrors, Prim Kitchen Hutch, Prim Kitchen Chairs, Prim Metal Roll Around Cart, Prim Wood Desk, 2 Prim Chest Of Drawers, Prim Sofa Table, Prim Dresser W/Mirror, Old Console Stereo, Retro Drop Leaf Breakfast Table, Retro Full Bed & Dresser, Prim Wood Shelves, Pantry Cabinets, Sm Prim Table, Wood Quilt Rack, Display Shelves, Sm Bakers Rack, Metal Restaurant Style Shelf, Glider Rocker, Old Pictures, Couch, Recliners, 2 Folding Tables, New Flooring, Bathtub, Pellet Heat Stove, Vizio Flat Screen TV, 12 Cu Ft Chest Deep Freeze, Side By Side Refrigerator, Nice Washer & Electric Dryer, Other Items Not Listed

### Antiques, Primitives & Households

Ant Metal Warmer, #8 Crock & Other Crock Pcs, Old Pottery Pcs, Lg Cast Kettle & Other Cast Pcs, Old Cream Cans, Iron Wheels, Granite Ware Pcs, Old Wood Ladder, Old Bike, Old Jars Inc Store Jars, Old Toys, Old Dolls, Old Oil Lamps, Prim Barn Door, Old Insulators, Old Pressure Cooker, Stained Glass Pcs, Pink & Green Depression Glass, Lots Of Other Old Glassware Of Various Kinds,

Pyrex Colored Dishes, Jadite Bowl, Pink & Blue Striped McCoy Bowl, Old Kitchen Knives & Utensils, Pitcher & Bowl Sets, Old Baskets, Sm Kitchen Appliances Inc Kitchen Aid Mixer, Pots, Pans & Dishes, Some Stainless & Some Old, Other Items Not Listed

### Coins & Currency

Over 20 Collector Silver Dollars Inc 1883O, 1885O, 1887, 1896, 1921S, 1878, 1889, 1900, 1900O, 1925, & Others, Several Barber, Walking Liberty & Kennedy Halves, Several Collector Books Of Various Kinds, 2 Graded Pennies Inc 1918S & 1930, Hard To Find 1923 Horse Blanket Bill, Several Mint & Proof Sets, Several Collector Commemorative Coins, Gold Replica Coins & Others, See Website For Full Listing

### Van, Tools & Outdoor Items

2002 Chevy Venture Utility Van Has V6 Motor & Approx 200,000 Miles (Runs & Drives Great), Delta Table Saw, Black Max Chainsaw, Chop Saw, Shop Vac, Gas Weed Eater, Roll Around Toolbox, Sm Hand Tools, Sm Electric Tools, Come A Longs, Car Ramps, Ladders, Air Tank, Wheel Barrow, Long Handle Tools, Saw Horses, Jack Stands, Lg BBQ Smoker, Lg Lot Of Concrete Yard Décor & Good Décor Rocks Inc Lg Flat Rocks, Lg Lot Of Plant Potting Items, Tomato Cages, Fishing Poles & Tackle, Canoe Oars, Life Jackets, Camping Supplies, Other Items Not Listed



**Auctioneers Note:** It Is An Honor To Be Conducting This Auction For The Shaw Family As We Have Known Them For Many, Many Years. This Auction Will Have Something For Everyone From Antique, Modern Furniture & Appliances To Neat Antiques, Primitives & Good Households. Good Collection Of Coins As Well As Good Running Van & Good Working Tools & Outdoor Items. This Is An Auction You Do Not Want To Miss. **Sale Order: Antique, Modern Furniture & Appliances Will Sell First Then Move Into Antiques, Primitives & Households. At Approx 3:30 PM Will Offer Coins & Currency Then Van & Large Items. Remainder Of Tools & Outdoor Will Finish Auction. See Ya There!!!**

Terms: Cash or check with proper ID. Now accepting most major credit cards. Nothing removed until settled for. Statements made the day of sale takes precedence over printed material. Everything sold as is where is. Not responsible for accidents. Restroom available. Concessions Provided. Check our website for upcoming auctions and for additional pictures!!



# NANCE AUCTION SERVICE

**No Matter How BIG or small, We Do Them All!!!**

**Col. Bill Nance 417-214-0093**

**In God We Trust**

**Philippians 4:13**

# 12<sup>TH</sup> ANNUAL SPRING Prairie Grove Amish Mennonite School CONSIGNMENT AUCTION

**TWO DAY AUCTION!! STARTING FRIDAY MAY 13<sup>TH</sup> - 3:00 PM | SATURDAY, MAY 14<sup>TH</sup> - 9:00 AM**

**Come and join us! Enjoy homemade Amish-Mennonite food! Breakfast - Steaks - Burgers - BBQ Chicken - Pies & More!  
BBQ Pork Dinner Friday Evening Starting at 5:00 PM | Breakfast 7:30 AM - 10:00 AM | Lunch Available All Day**

**TRACTORS**

- JD5410, Diesel, Open Station, under 4,000 Hrs.

**FARM EQUIPMENT**

- JD 569 Baler
- NH 313 Center Pivot 13' Disc Mower, Flail Conditioner, Nice & good condition
- NH 488 Haybine
- NH Side Delivery Rake
- JD 350 7' Sickle Mower
- JD 350 9' Sickle Mower
- IH 241 Round Baler
- New Idea 5-bar Rake
- 800 Gal. Water Wagon w/Spray Bar
- 300 Gal. Fuel Tank w/Stand
- 500 Gal. Fuel Tank
- Truck Diesel Tank
- GN 14-Bale Trailer
- Hydraulic Bale Spike
- 12' Box Blade, Tilt, Like new
- Adams SS Fertilizer Spreader Cart
- Land Pride 3-Pt. Tiller, 50"
- 6' Skidloader Forks
- MF 2-Bottom Plow
- JD 213 Rigid Header - Nice
- JD 920 Rigid Header
- JD 4-Belt P/U Head
- Case IH 730 30' Swather
- Poutry House Sprayer
- Bushog 3210 10' wide hd bushog

**LIVESTOCK EQUIPMENT**

- Arrow Q-Catch 86 Series Squeeze Chute, Head Restraint, Palp Cage
- WW Squeeze Chute
- WW Corral Panels
- Sheep & Goat THT Chute
- Goat Creep Feeder
- 2-ton Creep Feeder
- 3-ton Creep Feeder
- Bale Feeder wagon

**VEHICLES & TRAILERS**

- '90 International 4900 Truck w/18' Chandler Litter Bed, Field Ready
- '96 International 3800 57 Passenger School Bus
- 14' Enclosed Cargo Trailer Fold-down Back Door & Side Door, 2-Axle
- P1 20' Dump Trailer w/6' Sides & Tarp Cover
- 15' 30' GN Flatted Dovetail w/ HD Ramps, Tandem Dual 14 K Axles
- Homemade w/ title

**ATVS**

- '19 Honda 420 Rancher 4-whlr
- '19 Polaris Ranger 570
- '16 Polaris Ranger 570
- 2 Seater Dune Buggy needs motor
- Club Car w/Dump Bed, Gas
- '98 Yamaha 250 4-whlr.

**LAWN MOWERS**

- Hustler Super Z Hyperdrive, 60" Zero-turn
- Craftsman Riding Lawn Mower
- Pull behind grass catcher.

**FURNITURE & HOUSEHOLD**

- Trailer load of new Amish made furniture includes:
- 42X72 Table w/4 Leaves, 6-Chairs, Rough Sawn Maple
- 48X72 Table w/4 Leaves & 6 - Chairs, Grey Elm Top, Maple Base
- 48X72 Table w/4 Leaves & 6 - Chairs, Brown Maple
- 4 Pc. Rough Sawn Maple Vandella Bedroom Set, Queen Bookcase Bed w/Sliding Barn Door Track
- 5 Pc. Grey Elm Bedroom Set, Queen Bookcase Bed
- 4 Pc. Rough Sawn Maple Bedroom Set, Queen Bookcase Bed
- Rough Oak Sliding Door Bedroom Set by Niangua Furniture
- Rough Sawn Maple Full/Full Bunk Bed w/Matching 4-Drawer Chest
- Red Oak Full/Full Bunk Bed w/Matching 6-Drawer Chest
- 2 - Sewing Cabinets w/Sergey Lift, 1 - Grey Elm & 1 - Rough Sawn Maple
- 1 - Rustic Hickory Sewing Cabinet
- Swivel Glider Chair
- Log Rocker Recliner
- 2 - Swivel Magazine Racks w/Power Outlets
- 1 - Oak Swivel Magazine Rack
- Chime Wall Clock
- Assortment of Bookcases
- Rustic Entry Hallseat w/Hooks
- Child Size Table Set
- Child Size Hutch
- Princess House Glassware
- Cutco Knives

**LAWN & GARDEN**

- Big Troy-bilt Tiller
- Lot of Poly Martin House Gourds etc.
- Green Mountain Pellet Grill
- Flower Hanger w/ Weather Vane
- 2- Swing Sets
- Variety of Rose Bushes, Shrubs & Shade Trees

**TOOLS**

- North Star Trash Pump 2', New in box
- 5 HP Insulation Blower, Electric start
- Torch Set
- Trailer load misc tools etc.

**TOYS**

- Lots of Toy Tractors, mostly JD, lots are new in box and special editions
- JD Toys
- New JD 4430 Pedal Tractor
- Wooden Farm Toys & Barn

**ANTIQUES**

- 1886 #3 Yoke Dinner Bell
- 180 Lb. Trenton Anvil
- 2 - Wooden Wall Mount Crank Telephones
- 2 - Big cast iron pots
- Old brand name oil cans
- Longaberger Baskets.
- Misc: 4-Cyl. Diesel Reeler Engine
- 3- Surge Milkers
- Schwinn 3-Wheel Bike - Like New.
- Wagner 9" Skillets

**GUNS, FRIDAY 6:30 PM**

- 2 - Chimpunk .22LR
- Savage Axis 6.5 Creedmoor Camo Stock NIB
- Rem., .22LR, Pump, Hex barrel
- Rem. Mod. 522 Viper .22LR
- Sportsman Mod. 999 .22LR Pistol w/Pearl Handle
- Win. Mod. Wildcat Strata, .22LR
- LUG 3-12x44 Scope, NIB
- Hatfield Mod. SGI 20 Ga. NIB
- Henry Mod. H001 .22 LR NIB
- Vildiz Mod TK36 .410 Break-open NIB
- Henry Golden Boy .22 LR S/L/LR NIB
- Mossberg Patriot .243 Win. Vortex Crossfire Scope 3-9x40 NIB
- Heritage Rough Rider Rancher, 22 LR 16" Barrel Walnut Stock NIB
- Hatfield Mod. SAS 20 Ga. Auto NIB
- Rem. Mod. 700 ADL .270 Win 3-9x40 Scope Syn. Stock NIB
- Rossi .45 Colt Big Loop Saddle Ring NIB
- Savage Mod. 93R17 .17 HMR NIB
- Cricket .22 LR Walnut NIB
- Ruger American Predator, 6.5 Creedmoor Vortex 9-24x50
- Rem. Mod. 700 BDL, .300 Win Mag
- Rem. Mod. 700 BDL 25-06 Leupold Scope Rings
- Rem. Mod. 700 BDL 30-06
- Win. XPR .243 Win. Bushnell Banner Scope
- Browning A-Bolt .270 WSM Nikon Buckmaster 4.5-14x40 Scope
- Ruger M77 Mark 2 22-250
- Henry Golden Boy Mod H006MR .357 Mag/.357 Sp. Hex Barrel, Saddle Loop
- Win. Mod. 62A .22
- Savage Axis 30-06 SS, Bushnell Engage 3-9x40 Scope
- Stevens Mod 200 .223 w/Scope
- FAB MATO ARMES 7mm 3-9x50 Scope
- Win. Mod. 62A .22 LR Bolt Action
- Savage Cub .22 Bushnell Sportview 4x15
- Stevens Little Scout .22
- Ruger 10/22 Tugger Red Dot
- Rem. 670 Express .410 Pump
- Hatfield .410
- Stevens Mod. 67 20 Ga.
- Stoeger Condor 20 Ga.
- Western Field 12 ga. Pump
- Revelation 20 Ga. Pump
- Rem. 700 BDL .338 Win. Mag, Simmons Scope
- Lots of Ammo - .410 cal. - .22 LR - .17 cal. - .223 Rem. - 12 Ga. - 20 Ga. - 22-250 - .44 Mag. - .280 Rem. - .338 Win-Mag. - .45 Colt - .243 Win. - .350 Legends - .308N - .270 - 30-06 - 25-06 - 30-30

**HUNTING EQUIPMENT, KNIVES, ETC.**

- Case knife signed and donated by Governor Mike Parson
- Knife Collection over 50 Ga, Buck, Schrade & Misc.
- 16 - Case Knives in boxes
- Vortex Razor Spotting Scope 27-60 x 85

- Canoe Paddles
- Misc Arrow Heads
- Premium Hunting Blinds, 1 - 6'x6' & 1 - 4'x4'

**QUILTS, SATURDAY 1:30 PM**

- Links, Wine, Coral & Black, 110x115
- Diamond Jubilee, Wine & Coral, 113x115
- Twilight Shadows, Turquoise & Silver, 104x115
- Boston Common, Wine & Black, 104x110
- Lil Twister, Green Purple, Blue & Black, 107x107
- Bargello Swag, Purples, 107x113
- Log Cabin, Blue & Brown, Crib
- Diamond Trip, Mauve, Charcoal & Black, 95x110
- Star Beam, Pink & Purple, Crib
- Ozark Beauty, Wine & Tan, 97x104
- Lake Shore Hosta, Purple & Blue, 98x112
- Glacier Star, Pink & Brown, 105x107
- Heart Song, Red & Silver, 116x118
- Amish Shadow, Multi-color, 92x104
- Mariners Compass, Blues, 104x114
- Diamond Trip, Blue, Gray & Black, 102x111
- Diamond Trip, Peach, Gray & Black, 100x116
- Bargello Beauty, Wine, Gray & Black, 113x115
- Diamond Echo, Brown, Taupe & Tan, 100x118
- Starry Night, Teal & Black, 102x111
- Star Watch, Blue & Tan, 106x110
- Lone Star w/Wreaths, Cream, Burgundy & Navy, 105x116
- Spin Star, Navy & Burgundy, 105x116
- Trip Around The World Deer Panel (Top), Fall Colors, 92x102
- Log Cabin, Gold & Black, 102x108
- Melinda's Heart, Teal & Sage, 106x108
- Winter Whisper, Black & Silver, 102x110
- Aurora, Purple, 108x117
- Diamond Aurora, Pink & Gray, 112x124
- Indian Wedding Ring, Navy & Red, 109x119
- Broken Twinkling Star, Burgundy, Green & Lavender, 106x116
- Mariner's Compass, Navy's, 99x113
- Western Star, Purples, Toddler Bed

**MANY MORE ITEMS NOT LISTED & MORE CONSIGNMENTS EXPECTED BY SALE DAY**

**TERMS:** Cash or check. No items will be removed until settled for. Sellers or auction company are not responsible for accidents, errors in listing or lost items. Announcements made day of sale take precedence over any printed matter. When registering for a buyer number proper I.D. will be required. All Guarantees are between the Buyer and Seller.

**ALL COMMISSIONS & DONATIONS FOR MEALS GO TO PRAIRIE GROVE AMISH MENNONITE SCHOOL**



**For more information or to consign, call:**  
Dennis Blosser 417-326-9788 | Vernon Kropf 417-733-2600  
Eldon Swartzentruber 417-327-6348 | Lyndal Hostetler 417-733-2560



**12 Winding Creek Rd. - Buffalo, MO**  
From Buffalo go South on Hwy 65 to milepost marker 80, turn right on Kelly Rd, go West 2 1/2 miles, turn right on Winding Creek Drive, go North 1/2 mile to sale site.  
From Springfield go North on Hwy 65 to milepost marker 80, turn left on Kelly Rd, go West 2 1/2 miles, turn right on Winding Creek Drive, go North 1/2 mile to sale site.

**ANTIQUES - FURNITURE - TOOLS - MISC AUCTION**

**SATURDAY MAY 14th, 2022 10:00 AM**

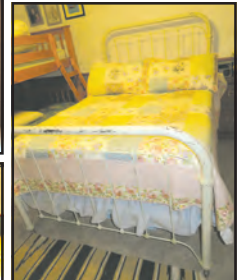
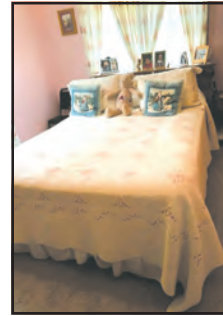
**LOCATED: 107 W BENNETT, NIXA MO**

FROM MAIN ST & MT VERNON NIXA MO GO NORTH ON MAIN ST 4/10 MILE, TURN LEFT ON BENNETT TO AUCTION ON RIGHT. FOLLOW SALE SIGNS. BREAKFAST & LUNCH AVAILABLE.

**FOR PICTURES SEE WEBSITE OR AUCTION ZIP.COM**

**ANTIQUES-FURNITURE**

DRESSER & MIRROR—5 DRAWER CHEST--KITCHEN CHAIR—3 PC QN BEDROOM SET—5 PC OAK CLAW FOOT DINETTE SET-- 2 KITCHEN CHAIRS--3 LEG TABLE—BUFFET—WALL PHONE—ROCKER RECLINER—LOVE SEAT—FLOOR LAMP—ENTERTAINMENT CENTER—FULL SZ IRON BED—BUNK BEDS—HANDMADE DESK—STORAGE CABINET—2 & 4 DRAWER FILE CABINET—WALL SHELVES—WASH STAND—ANTQ CLOCK—1950 RADIO—KIDS ROCKER—SOFA--SCHOOL DESK—FLOOR LAMPS—COO COO CLOCK—MISC TABLES—CD STORAGE CABINET—WALL BUBBLE PICTURE—PHILLIPS 24" FLAT SCREEN TV—SONY 32" FLAT SCREEN TV--WHIRLPOOL WASHER/DRYER—FRIGIDAIRE UPRIGHT FREEZER—SM GE CHEST FREEZER—4 DRAWER CHEST—5 PC PATIO SET—ANTQ TRUNK—PARK BENCHES—3 PC PATIO SET—OIL LAMPS—WALL DECOR—HURRICANE LAMP--BAKERS RACK—FIRE PIT—SPEAKERS, RADIO & CD RECORDER



**UTILITY TRAILER-TOOLS**

KODIAK 5X10 BUMPER UTILITY TRAILER—CRAFTSMAN LAWN CART—CRAFTSMAN LTX 1000 RIDING MOWER 21.5 HP 42" DECK—TROY BILT 6 1/2 HP PUSH MOWER 20" DECK—MONTGOMERY WARD 5 HP FRONT TINE TILLER—WHEEL BARROW--CRAFTSMAN 16" SCROLL SAW—6" BENCH GRINDER—2 HP AIR COMPRESSOR—CENTURY BATTERY CHARGER—18 VOLT DRILL—WIN BELT SANDER—CHICAGO SAW ZALL—MITER SAW—ROCKWELL 10" MITER SAW—2 TON FLOOR JACK—CRAFTSMAN 3 1/2" VISE—B&D 7 1/4" SKIL SAW—BELT SANDER—CRAFTSMAN 8" TABLE SAW—GAS CANS—CAR RAMPS—WOOD 6' STEP LADDER—ALUM 16' EXT LADDER—STIHL BG55 BLOWER—STIHL FS45 WEED EATER—B&D 16" HEDGE TRIMMER—LIMB SAW—LONG HANDLE TOOLS—FLARING SET—WORK LIGHT—BUCK SAW—SYTHE—ORGANIZERS, NAILS, SCREWS—LANTERN—EXT CORDS—TROUBLE LIGHT—HAND SAWS—AIR HOSE—HAMMERS--C CLAMPS—STAPLE GUN—TIN SNIPS—CROSS CUT SAW—SOLDERING GUN—DRILL BITS—ROUTER W/ROUTER TABLE—DRILL

**COLLECTIBLES-PRIMITIVES-MISC**

NIPPON PC'S—HAT OINS—PERFUME BOTTLES—REMINGTON STANDARD ANTQ TYPEWRITER—AVON BLUE VASES, PITCHER & PLATE—LG LOT BOYDS BEARS & DOLLS—AVON CHERISHED MOMENTS DECORATIVE PLATES--#10 CROCK AND OTHER CROCKS—COPPER WASH TUB—WASH BOARDS—SHOE LAST—ANTQ SHOES AND WOODEN SHOES—PITCHER & BOWL—ANTQ CURLING IRON—SHAVING MUG & SHAVING EQUIP—VANITY SET, BRUSH, MIRROR—RAZOR STRAP—ANTQ WEDDING HAT —NAIL KEG—SAD IRONS—WOODEN FLOUR BOX—MARBLES—ANTQ ADJUSTABLE PATTERN—RAGGEDY ANN & CABBAGE PATCH DOLLS—ANTQ GOWN—WOODEN IRONING BOARD—STEINS--WOOD & GLASS ROLLING PINS—APPLE PEELER—BUTTER MOLD—SALT CROCK—MAGIC SIFTER—SAUSAGE GRINDER—CHERRY PITTER—DAISY CHURN—MILK & CREAM BOTTLES—SYRUP PICTURE—ANTQ UTENSILS, SOME RED HANDLES—AVON CAPE COD COMPLETE SET OF 12—KIDS TEA SET—ANTQ BOTTLES—ANTQ SCALES—ANTQ CANS & TINS—MARCREST DISHES—SIFTER—BLUE JARS W/ LIDS—GRATERS—COFFEE GRINDER—MEAT CLEAVER—KEROSENE FILLER FOR LAMPS—MISC GLASSES—BOOKS--SNOWBALL ICE CREAM FREEZER—KNICK KNACKS—SEWING THREAD—BUTTER CHURN—PINK & CLEAR LANCASTER DISHES—CAST IRON KETTLES—CROCK JUG—POPCORN MAKER, FIREPLACE TOOLS, HOT DOG STICKS, RUG BEATERS—SALT DISHES—COAL BUCKET—RAILROAD LANTERN—STEEL TRAP—MOLE TRAP—SHELIVING—PRESSURE COOKERS—PANS--COLANDER--CANNING POTS—OZARK MILL SIGN—LAWN CHAIRS—BIRD BATHS—BIRD FEEDERS—HALLOWEEN DECOR



**OWNER: MITCHELL WESSEL**

ANNOUNCEMENTS MADE ON SALE DAY WILL TAKE PRECEDENCE OVER ANY OTHER PRINTED MATERIALS. NOT RESPONSIBLE FOR ACCIDENTS OR LOSS OF ARTICLES ON OR NEAR SALE SITE.

**MELTON AUCTION & REALTY CO LLC**



[meltonauctionrealty.com](http://meltonauctionrealty.com) | [roger@meltonauctionrealty.com](mailto:roger@meltonauctionrealty.com)

Roger Melton | Nixa, Mo | 417-830-0153 or 417-725-1801  
 Brad Cole | Nixa, Mo | 417-840-2950  
 Tanner Foster | Galena, Mo | 417-840-5519

609526

**VISIT WEBSITE FOR PICTURES**

# ESTATE AUCTION

**SATURDAY, MAY 14<sup>TH</sup> - 10:00 A.M.**

**Location:** 2065 Thomas Road, Norwood, MO  
**Directions:** **From Norwood Exit:** Take Hwy E North, turn right onto E Outer Road. Go approx 1/4 mile to Thomas Road on Left, go approx 1/2 mile to Auction on Left. **WATCH FOR CHADWELL AUCTION SIGNS.**  
**Payment System:** Cash • Debit Card • Credit Card (Debit / Credit Card Fee Will Apply) Checks approved if known by auction company.  
**VISIT: WWW.CHADWELLAUCTIONS.COM**



**DIXON**  
**61" Zero**  
**Turn Mower**  
**486hrs**



**6'x10'**  
**TILT**  
**BUMPER**  
**TRAILER**



**HOUSEHOLD**

Wooden Table w/4chairs • Oak Roll Top Desk • Desk Chair • Filing Cabinet • Assorted Linens • Electric Heaters • Cookbooks • Oak Night Stand • Stand Mirror • Glider Rocker • Bookcase • Oil Lanterns • Lamps • Misc Wall Decor • 5pc Oak King Bedroom Suite • Pyrex • Assorted Dishes • Corelle • Saladmaster • Silverware • Mixing Bowls • Casserole Dishes • Pie Plates • Cookie Jars • Coke Glasses • Round Table w/Chairs • Figurines • Mantle Clocks • Wall Mirror • Sanyo Television • Oak End Tables & Coffee Tables • TV Trays • Oak Table w/4 Chairs • Rocker Recliner • Bunn Coffee Pot • Crock Pot • Waffle Maker • Electric Skillet • Toaster Oven • Blender • Tupperware • Oak Entertainment Center • Bar Stools • Whirlpool Washer & Dryer • Love Seat • Board Games • Oak End Tables • Recliner • Folding Chairs • Roper Upright Deep Freeze • Other

**SHOP ITEMS**

Cutting Torch w/Cart • Millermatic 210 Welder Generator w/Gas Bottle • AC 225 Lincoln Welder • Creeper • Metal Storage Cabinet • Victor Gas Gauges • Air Hoses • Campbell Hausfeld 20gal Air Compressor • Delta HD Drill Press • Nuts & Bolts • Nut & Bolt Bins • Misc Tools • Hand Sanders • Sawzall • Step Stool • Work Bench • Propane Cylinder • Drop Cord • Bosch Hammer Drill • Stand Grinder • Assorted Electric Tools • Dewalt Miter Saw • Metal Work Bench on Castors • Bracing Bits • Chisels • Craftsman Tools • Milwaukee 18v Cordless Drill Set • Commercial Shop Mop • Hilti Hammer Drill • Wood Working Saw • Levels • Car Ramps • 1.5ton Floor Jack • Torpedo Heater • Jack Stands • Tool Boxes • Pipe Wrench • Shop Broom • 3" HD Vise • Drop Light • RR Anvil • Floor Mats • 2 Wheel Dolly • Com A Long • Saw Horses • RR Jacks • Air Tank • Chain Hoist • 3 Ton Floor Jack • Other

**OUTDOOR ~ MISC**

Craftsman 2900 PSI 7hp Pressure Washer • Heat lamps • Fishing Tackle • Fishing Rods • Yard Seeder • Hand Sprayers • Park Bench • Lantern • Drain Snake • Wooden Step Ladder • Park Bench • Trash Cans • FS 85 Stihl Weedeater • Minnow Traps • Fuel Cans • Stihl Wood Boss 028 Chainsaw • Lawn Chairs • Mail Boxes • Wooden Step Ladders • Battery Powered Weed Eater • Wooden Bench • 2 Ariens Riding Mowers without decks • (2) 5 12 24' Trusses • Turkey Fryer • Wheel Barrow • Christmas Tree Stands • Handicap Supplies • Lawn & Garden Tools • Coolers • Fans • Wooden Adirondack Chairs • Magnum Electric Moped • Childs Riding Toys • Frost Freeze Hydrant • Hand Limb Saw • Werner 6' Fiberglass Ladder • Weed Burner • Garden Hose • Animal Cage • Live Trap • Horse Shoes • Park Bench • Wind Mill • Large Lot Pet Taxis • Porch Swing • Patio Furniture • Dog & Rabbit Feeders • Bicycles • 10 Dog Pens • Kids Toys • Christmas Decor • Radio Flyer Tricycle • Scooter • Pressure Washer • Watering Cans • Other

**ANTIQUES ~ COLLECTIBLES**

Cast Iron Dutch Oven • Bow Saw • Candy Machine • Large Cow Bell • Bed Pan • Steel Traps • Old Scales • Kraut Cutter • Hay Knife • Cotton Scales • Bow Saw • Square • Hatchet • Milk Pail • Cow Kickers • Ice Shoes • Wooden Chairs • Blue Jars • 2 Man Cross Cut Saws • Metal Bucket • Well Bucket • Wooden Doors • School Desks • Arctic Boy Water Can • Wagon Wheels • Metal Lawn Chairs • Wash Tub • SS Milk Pail • Sythe • Louis L'Amour Books • Fan • Apple Peeler • Iron • Oil Can • Other

**AUCTIONEER'S NOTE:** Something for Everyone! Come spend the day with us. *Thanks, Shawn*

**DRIVER'S LICENSE OR PICTURE I.D. REQUIRED • TERMS: CASH OR APPROVED CHECK** **OR**

**Chadwell**  
 Auction Service, LLC  
[www.chadwellauctions.com](http://www.chadwellauctions.com)

**Auctioneer:**  
**SHAWN CHADWELL**  
**417-830-0209**

**Clerk:**  
**SHELLY CHADWELL**  
 Cell: 417-880-8449

**Cashiers:**  
 Shawn Irby • Marla Chadwell  
 Kati Roberts • Emily Chadwell

**PROFESSIONAL SALES MANAGEMENT**  
 LUNCH WAGON • APPRAISAL SERVICE • RAIN OR SHINE  
 All announcements made day of sale take precedence over any printed matter.  
 Not responsible for lost or stolen merchandise. Not responsible for accidents.

# PUBLIC AUCTION

## 1:15 p.m. Sunday, May 15<sup>th</sup>

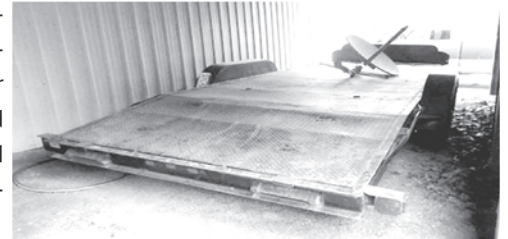
**Owners: Ellis & Mary Lou Basham**

**Location:** 9600 Creek Rd. Raymondville, Mo. 65555. **DIRECTIONS:** From Raymondville, Take Hwy. 137 North to Creek Road. Follow Creek Road to Auction. Watch for signs day of auction.

### ★ TRUCK ★ TRAILER ★ TOOLS ★ MISC ★



- 1993 Chevy Extended Cab Dually with Diesel AT • MacLander Car Trailer • 6 Ft. Howse Bushhog • Leinbach Post Auger • 7 Ft. Blade • 14" Craftsman Snowblower • Troybilt Super Bronco Tiller • 18 HP Motor • Wood Lathe • Craftsman Radial Arm Saw • Chain Hoist • Pipe Wrenches • Vise • Reese Hitch • Stanley Frame Plane in Original Box • Old Hand Saws • Large I BEAM •



### ★ GUNS ★

- Marlin Model 36 30-30 • Stevens Model 311 Double Barrel 410 Gauge 3" • Remington 12 Gauge Model 1100 Vent Rib with Gold Inlay • Ranger 20 Gauge Double Barrel Shotgun • Winchester 12 Gauge Model 12 with Poly Choke • J.C. Higgins 22 Automatic - Nice • Winchester Model 06 Hex Barrel 22 • Marlin Model 39 Lever Action • Stevens 22 Favorite Hex Barrel • 12 Gauge Long Tom Texas Ranger Single Shot • Remington 12 Gauge Double Barrel with Hammers •

### ★ HOUSEHOLD ★ ANTIQUES ★ MISC ★

- 1928 Electric Sewing Machine • Nice, Antique Telephone Table & Chair • Sewing Rocker • Antique Chest of drawers • Large Cabinet • Cane Chair • Dressing Table & Chest • Antique Dry Sink • Microwave • 12-Piece Set of Blue Currier & Ives • Treadle Sewing Machine • Home Decor • Quilts • Blankets • Sheet sets • Table Cloths • Antique Glassware • Wool Material • Bread Maker • Waffle Iron • Frames • Games • Sewing Machines • 1950 AM/FM Magnavox Radio in Case • Several Antique Dishes and Sets of Dishes •



To see all pictures, go to [www.auctionzip.com](http://www.auctionzip.com)....auctioneer number 22112; or go to facebook at Darren Scheets Auction Service.

**Auctioneer's note:** Don't miss this good quality auction. Auction will be larger than appears. The Bashams have sold their house and will be moving. Thanks, Darren and Jake

**TERMS OF AUCTION:** Cash or check with picture ID. If not known by the auctioneer you need to bring a bank letter of credit addressed to Scheets Auctions LLC. Nothing loaded or removed until paid for. Everything sells as is, where is. Not responsible for accidents, lost or stolen items. Auction day announcements take precedence over all previous advertisements. **LUNCH ON GROUNDS.**

## Darren SCHEETS

## AUCTIONS

(417) 457-6638 • (417) 926-8575

[www.scheetsauctions.net](http://www.scheetsauctions.net)

# R&R AUCTION SERVICE

## HUGE 2 DAY AUCTION

MAY 13<sup>TH</sup> & 14<sup>TH</sup> 10AM EACH DAY

15852 Highway A, Phillipsburg, MO

Shirley McMillan had Home Traditions in Lebanon, MO and Antiques at the Farm in Phillipsburg, MO. After her passing all inventory will be liquidated in an amazing 2 day auction just off of I 44 at Phillipsburg exit on Highway A. Many items are yet unseen and will be added to gallery as we get closer to this HUGE auction.

Some items include but are not limited to... Large metal Vickers and Fina signs, other old metal signs, china, glassware, Ruby Red, silverware, teapots, kids wicker strollers, chairs and rockers, wooden boxes, berry bowl set, Heisey bowl, goofus glass, vaseline glass, yardsticks, old radio, reverse painting, old pictures and frames, plants, shelves, lots of jewelry, antique stove, iron bed, horse weather vane, Keen Cutter apple peeler, Christmas decor, dropleaf table, old scales, antique commode, little tables, crocks #10, #6, #5, Elgin pocket watches, old hand puppets, wire rim glasses, ceramics, Pink depression, Aladdin lamps, porcelain, vintage hat pins, Genesee Brewing Company tray from Rochester NY, wooden rule, smoke stand, bronze ewer, old hand fans, hobnail opalescent, pitchers, wicker trunk, wicker table trays, storage, Aunt Jemima cookie jar, antique tins, bottles, jars, cut glass, old books, large vases, old purses and hats, granite coffee pot, glass block, Royal Supreme grater, lamp holders, old toys, spittoon, cookie cutters, wall hangings, old records, insulators, kitchen utensils, all pockets, Sunbeam churn, antique bed pot, old Coke tray and coaster set, mirrors, baskets, bowls, showcases, fancy shelving, trunks, Tiffany style desk lamp, lots of antique china, Thas 1863 sterling silver spoons, canisters, rolling pins, Magic Chef oven, floor lamp, cabinets, metal fruit stand and fake fruit, iron decorative racks, old wood levels, wood cash register, metal high chair, cast toys, banks, Bell Telephone 1880, cigar boxes, ceramic banks, glass balls, baseball cards, old postcards, wood crates, dictaphone, slag glass shade, wooden high chair, old wooden ball bats, tack quilt, Priscilla ovenware, old maps, Jadite, cake plates, rugs, old cream can, Japan dishes, Jewel T, Davey Crockett puzzle, old scientific scales, antique Royal typewriter, old doll, wine racks, coat rack, dressmakers mannequin, old magazines, beveled glass pane doors, metal porcelain covered table tops, iron beds, high safe, dresses, antique kitchen cabinets, bed sets, lots of parts and pieces, multi tier stand made from antique hand truck, antique feed dolly, horse collars, decorative ladders, oak dining table and chairs, lighted cabinets, end tables, coffee tables, wood chairs, metal shelving, cane bottom chairs, lots or area rugs, King trumpet, bushel baskets, Standard computing scale company, Detroit MI, bamboo canvas chair, Spanish riding attire, portable antique Singer sewing machine, metal jello mold, tin cake carrier, copper kettle and other copper items, tall wooden folding chair, armoire, planters, 5 gallon glass water bottle, metal kerosene can, large charm display, pie safes, old gumball machine, cubby cabinet, antique writing desk, ice cream chairs, 3 Semi box trailers, large wooden beams from Phillipsburg Mill, pull behind sprayer unit, large amounts of decor items and so much more that we can't start to list it all.



**TERMS:** Cash, check, or credit card with proper I.D. nothing removed until settled for A 3% fee will be added to credit card purchases. Not responsible for errors in listing. Any announcement made sale day will take precedence over any printed matter. **Note:** Service will take every precaution to prevent accidents, but will not be responsible should any occur.

**GENERAL AUCTIONEERS**  
**Auction & Appraisals**  
**R&R SERVICE**

For more information contact Professional Auctioneer Russ Weeks at 417-576-7357 or check out [www.rrauctionservice.com](http://www.rrauctionservice.com)

Serving this area's auction needs since 1997 with honesty and professionalism. [www.rrauctionservice.com](http://www.rrauctionservice.com)  
 (417) 576-7357 or (417) 345-4140





# HUGE BUILDING MATERIAL AUCTION



**THIS IS NOT A CONSIGNMENT AUCTION, ALL ITEMS FOR SALE BELONG TO INTEGRITY OUTLET.**

## SATURDAY, MAY 14TH • 10:00 AM

**3006 HWY 62, Green Forest, AR 72638 • 3 miles west of Green Forest  
Auction Inside - will be held regardless of weather**

◇ **DIMENSIONAL LUMBER** – see scheduled to arrive information at bottom ◇ **PINE** – 1x6 T&G available in various styles including V-Match, bead board, also wire brush 1x6 T&G – unfinished ◇ **SOLAR PANELS** ◇ **INSULATION** ◇ **SHEATHING with Shiplap Edge** – in various thicknesses and sheet sizes – foil on one side/tar paper on the other ◇ **BACKER BOARD** ◇ **CULTURED STONE** – good selection of colors ◇ **DECKING – composite** – great selection of colors, several small lots available as well, some colors include trim pieces available ◇ **COMPOSITE DECKING TILES – Interlocking 12x12 tiles** - Redwood color – great for patios, verandas and virtually any level concrete or gravel surface ◇ **OSB** – 7/16", 5/8" and 3/4" T&G ◇ **PLYWOOD** – 1/2" – select grade ◇ **MINI SPLIT AIR CONDITIONERS/HEAT PUMP** – 12,000 BTU ◇ **PARALLAMS** – very limited selection ◇ **PREFINISHED FIBER CEMENT SHAKE SIDING** ◇ **ICE AND WATER SHIELD** ◇ **HOUSE WRAP** ◇ **BARN WOOD DOORS** - real wood doors ◇ **PEX TUBING 1/2"** – 500' rolls ◇ **INSULATION** – R13 (check back for updates) ◇ **PULLDOWN KITCHEN FAUCETS** ◇ **NEW DELTA, MOEN, and HOME IMPRESSIONS FAUCETS:** Vanity and kitchen (NIB)

– large selection to choose from ◇ **APPLIANCES: NEW** as well as Shelf Pulls and Scratch and Dent ◇ **NEW SELECTION OF LIGHTING:** nice variety of really nice lighting fixtures – including some high end lighting retailing as much as \$3000 ◇ **VINYL WINDOWS:** single hung – vinyl insulated windows ◇ **KITCHEN CABINETS:** Multiple sets of cabinets – option of stained and painted including: Farmhouse Brown, AND Shaker Style in Dark Gray, Light Gray, and White - all wood – prefinished cabinets - Straight and L shaped sets with some also including pantry - some sets include soft close doors and dovetailed drawers ◇ **VANITIES** – Nice selection of vanities including matching vanities for the Farmhouse Brown, Dark Gray, Light Gray, and White cabinets; as well as new inventory of high-end vanities – some include soft close drawers and doors ◇ **PORCELAIN AND CERAMIC TILE:** including new inventory, with great selection of sizes and colors of tile to choose from ◇ **MOSAIC TILE – TRAVERTINE** – marble – tile – stone including Subway Tile. ◇ **WOOD LOOK TILE:** Great selection of styles and colors in various lengths and widths ◇ **Hardwood Flooring including** ◇ **7" WIDE PLANK WHITE OAK**

**UNFINISHED OAK FLOORING:** Dual faced engineered back flooring – T&G – beveled edge ◇ **PREFINISHED HARDWOOD FLOORING:** 3/4" solid prefinished hardwood floor ◇ **7" wide 1/2" thick PREFINISHED PLANK WOOD FLOORING** ◇ **LVT:** wood plank – snap lock and glue down - great selection of colors ◇ **TRIM: BASE – CASING: Pre-Primed** – various widths & lengths, finger joint **PINE, OAK; AS WELL AS OAK** quarter round, chair rail, cove, base shoe, and door stop. ◇ **STAIRCASE HANDRAILS** – in Oak and Poplar ◇ **ENTRY – PASSAGE – PRIVACY DOOR KNOBS AND LOCKS** ◇ **QUARTZ:** Maple White in various sizes - 3cm quartz ◇ **VANITY TOPS** available in **QUARTZ and MARBLE** – includes undermount, overmount, and vessel style tops ◇ **KITCHEN SINKS:** Composite – SS - varying styles and colors ◇ **BATHTUBS – including Free Standing** ◇ **CEILING FANS** - nice selection ◇ **TOILETS** ◇ **PEDESTAL SINKS** ◇ **TOWEL BARS and RINGS, TOILET PAPER HOLDERS, ROBE HOOKS, TOOTHBRUSH HOLDERS**

**Scheduled to Arrive – 2x4's, 2x6's, 2x8's and 2x10's**

**MORE COMING IN DAILY - check sites often. For pictures see Integrity Outlet on Auctionzip.com (enter ID#42073 at bottom of page) or Facebook CELL 870-754-4428 • 870-715-5479 • 870-715-2326 (text only)**

Loadout – Sale Day – until 7:00 pm; Sunday – 1:00 pm – 5:00 pm; Monday – 9:00 am – 4:00 pm \* No Buyers Premium  
Loadout Assistance Available – Including Forklift After Auction Ends \* All items must be picked up day of sale or during one of our posted, scheduled, announced pick up times following the auction.

## INTEGRITY OUTLET

**CONTACTS - CALL OR TEXT MIKE @ 870-754-4428 • TEXT ONLY @ 870-715-5479 or 870-715-2326**



All announcements made the day of auction will supersede previous advertising.

# REAL ESTATE & ESTATE AUCTION

## SATURDAY, MAY 21ST AT 9 AM 1512 RIVERDALE RD. OZARK, MO

**Directions:** From Hwy 160 in Nixa, Mo turn east on Riverdale Dr. follow .7 miles to Riverdale Rd. and turn right. Follow 2 miles to auction on right. Look for Essick Auction Signs! **Owner: Dave Carnahan**

**LIVE & ONLINE BIDDING AVAILABLE AT ESSICKAUCTION.HIBID.COM**

### Real Estate: Sells at approx. 12 PM (CST)

Don't miss this rare opportunity to own a beautiful Ozark, MO home on 8.59 +/- acres. Set back from the road lies a 4,400 +/- total sq. ft. seamless steel siding home with large composite deck porches & a 26'x36' 3 car garage. This basement home includes 4 beds & 3.5 baths with open floor plan & 15' ceilings, mud room, lots of hard wood floors, stainless steel appliances in kitchen, large kitchen island with granite counter tops, large storage area in basement, large wet bar in basement, bathroom w/handicap walk in tub, office space and a small orchard w/pear and apple trees. Home has a water softener, propane HW heater w/recirc pump and all steel siding, windows and roof are only 3 years old. This property is a homeowner's dream w/ a 48'x60' shop including 3 - 12'x14' overhead doors on front and 2 - 8'x7' overhead doors in back as well as a Bend Pak 9k lb. car lift in the center bay, shop also includes a 1/2 bath on the beautiful, quiet & highly sought-after Riverdale Rd. 2021 taxes \$3,682.00. Nixa Schools



### Vehicles/UTV's/Harley/Mowers: Sell at 11:30 am (CST)

2004 Chevy SSR truck, hard top/convertible, 5.3 V8, all leather, power everything, 20" wheels, 132k miles, Slick! 2014 Chevy Cruze LTZ, 4 cyl., loaded, 102k miles, leather, power seats/windows/locks, remote start, heated seats & Bluetooth, new tires, sunroof, VIN #1G1PG5SB2E7472486; 1998 Ranger Sport R82 bass boat, 18', 7'4" beam, w/ '98 Mercury 175 EFI motor, dual console, 3 bank charger, Minnetonka Maxxum 70 lb trolling motor, Hummingbird electronics, great shape, well maintained! 2014 Club Car golf cart, gas, windshield, top, custom wheels, fold down backseat, great shape, VIN#PR1117-190052; 2010 Kawasaki Mule 610, 4 WD, aluminum wheels, 618 hrs., great shape! 2015 Harley Davidson Sportster 1200 custom, 4k miles, windshield, 2 saddle bags, PRIOR SALVAGE TITLE! Husqvarna PZ72 zero turn mower, 72" cut, air ride seat, dual tanks, Kohler 31 HP motor, hr. meter not working, great shape! 2014 Cub Cadet RZT S54 zero turn mower, 54" cut, Kawasaki 23 HP motor, 184 hrs., 4-wheel steer, cruise control; John Deere 757 Z Trak zero turn mower, 57" cut, Kawasaki 25 HP motor, 335 hrs.; Grasshopper 618 zero turn mower w/SL61 front deck, Kohler motor, 440 hrs.; Craftsman DYT4000 riding mower, Kohler 19 HP motor; 2013 Utility trailer, 5'x10' w/ramp & list assist

### Guns: Sell at 10:30 AM (CST)

**Guns will be held offsite until sale day!** Mark-7 Revolution commercial automatic reloader; Winchester Model 94 AE, lever action, .44 Mag, big loop w/saddle ring, Slick! Ser. # 6260914; Inter Arms mod. 92 SRC, lever action, .357 mag-38 spl., Ser. # K102710; Browning A bolt 7MM mag, w/Muzzle break, ser. #86179NV817; Browning Citori over/under 20-gauge shotgun, 2 3/4" & 3"; ventilated rib barrel, SLICK! #24725MM131; P. Beretta over/under 12 ga. Shotgun, 2 3/4" & 3"; ventilated rib barrel, 686 Onyx. ser. # L58373B; Remington 870 mag. 12 ga. Pump, 2 3/4" or 3"; vent. Ribbed barrel, Slick, #A385712M; Kriss Vector CRB black semi auto, 9 MM rifle, w/glock clip, #919C007854; Rock River Arms AR-15, w/Mag pull grip & stock, flip up peep site, #KT3002963; Provectus AR-15, mag pull stock, #PR00046; Anderson AR-15 "Zombie Outbreak", #15161432; DP 12 double barreled pump shotgun, 16 round capacity, #DP22820; Ruger Super Red Hawk stainless steel revolver, .44 mag., w/Nikon 1.5 to 4.5 scope, 9.5" barrel, Slick!, #550-99833; Browning Buck Mark semi auto, target pistol, .22 LR, w/scope & bipod, #655NV24089; Armi mod. TA76, .22 revolver, #B39105; Wards Western Field mod. 87-SB87-TA, single shot or semi-auto;

Winchester Mod. 190 semi auto .22, #720775; Mossberg S51M, .22 cal., semi auto; Remington target master, mod. 510 single shot .22, S, L, or LR; Traditions inline .50 cal. Muzzle loader, w/scope, #14-13025856-03; Vega Force VR 16, 5.95 cal., airsoft, w/red dot scope, #AGG01366; Leupold Vari-X III, 4.5x14 scope; Leupold D-EVO 6x20 fixed power optic; Leupold LCO red dot scope; 16,000 rounds of 9MM brass casing; 5,000 rounds of 9MM bullets, 124 gr.

### Tools/Shop Items:

Agri Fab pull behind seeder; Remington electric pole saw; Echo backpack leaf blower; 2 - Craftsman weed eaters; Husqvarna Industrial cordless weed eater; Craftsman 22" weed trimmer; Pittsburg 3 ton floor jack; Porter Cable drill press; Grizzly G O 555P 14" band saw; Rigid 12" mitre saw on stand; Craftsman 16" scroll saw; Belt/Disc sander; Kobalt aluminum truck tool box; Several roll around tool boxes; Approx. 10 Gladiator roll around cabinets ; Aluminum cargo carrier; Heavy Duty bench vise; Craftsman industrial bench grinder; 2 wheel dolly; 2 - 8' Gladiator work tables Werner 16' aluminum ext. ladder; Several misc. fiberglass ladders; Bio Smart infrared heater; Stihl MS 170 chain saw; Portable air tank; Max Air 48" shop fan; Lots of misc. power tools; Several misc. cordless tools; Craftsman shop vac; Craftsman 33 gal. air compressor; Craftsman 2800 PSI power washer; Garage creepers; Brute mop bucket; Lots of misc. lawn chairs; Lots of misc. camping supplies; Leupold BX-1 McKenzie 10x42 binoculars

### Furniture/Household:

Cream colored leather couch and 2 oversized chairs; 9' glass table w/white base & 8 black leather chairs; 4 black leather movie theatre recliners; TV console with electric fireplace; Several TV cabinets, end tables, décor tables, etc.; LG front load washer & dryer; Whirlpool fridge, black, super clean! Modern glass octagon table & 4 black leather chairs; Several desks & office chairs; Brother PE800 sewing machine; Brother XL-2600i sewing machine; Go Big accu quilt; Accu quilt Studio 2 manual commercial style fabric cutter w/die; Brother PE 180D sewing machine, Disney edition; Lots of sewing supplies and notions; 10' shuffle board; Lots of lawn furniture, chairs and benches, outdoor furniture covers; Several pieces of exercise equipment; 2 - Roomba vacuums; Several flatscreen TV's various sizes 30" to 70"; Several pieces of artwork, vases, décor items, too much to list! Autographed Schwarzkopf picture; Lots of Christmas décor; Various pots, pans, dishes & glassware



**Auctioneer's Notes:** This highly sought-after home on acreage in Christian County is well maintained and a great opportunity for anyone looking for a quiet area just on the outskirts of town within Nixa School district. This home is full of high-quality modern furniture & décor as well as nice tools & shop items. Vehicles and large ticket items are all in great condition and well taken care of! Mr. Carnahan is moving out of state and is selling all his estate before he goes. Don't miss this rare auction!

**Real Estate/Auction Terms:** Cash, check, & CC (3.5% fee) accepted. Real Estate requires \$30,000 down payment day of sale cash or check only balance in cash on or before 45 days. No contingency contract. Bank Letter of Credit required Day of Sale addressed to Essick Auction & Realty dated May 21, 2022 only. Announcements made on sale day will take precedence over any other printed materials. Not responsible for accidents, lost or stolen articles on or near sale site. Large ticket items may be held until checks clear. 10% buyers premium for online (Hibid) bidders only! Bank letter of credit/funds required for online bidders bidding over \$10,000.00

**ESSICK**  
AUCTION & REALTY

**Dusty Essick - Auctioneer/Realtor**  
Phone: 417.883.SOLD  
www.essickauction.com  
dusty@essickauctionservice.com







# Bull SALE

**SATURDAY, MAY 14, 2022 | 6 PM**  
**PARIS, MISSOURI**  
 DINNER WILL BE HELD AT 5 PM

## SELLING 40+ BULLS

*Bulls selling sired by Mead Magnitude, SydGen Enhance, Six Mile Diesel 673F, E&B Plus One, GAR Home Town, BUBS Southern Charm, Musgrave Mediator, Brooking Bank Note, Raven Powerball, SydGen KCF Gavel and many more!*

**ALSO SELLING 20 COMMERCIAL SPRING CALVING PAIRS**

This sale will be broadcast live on the internet.

***DVAuction***  
 Broadcasting Real-Time Auctions

Real time bidding & proxy bidding available.

**GHAS, MISTY, RANCE AND ROSS**

**GHAS | 573-473-2508**

**MISTY | 573-473-8208**





**Saturday, May 14, 2022 • 9:00 a.m.**

**LOCATION: In Licking, Mo., on Highway 32 east at old Licking Livestock Auction site. Next to Hammond Feed & Farm Supply. Watch for signs. To view photos, go to [auctionzip.com](http://auctionzip.com). Auctioneer #28367**

Gold Carnival Dishware  
 Pink Depression Glassware  
 McCoy Sanitary Stoneware Churn Bottom  
 Falstaff Can Opener  
 Blue Line Crock & Pitcher  
 Fire King Dishware w/lace  
 1929 Crock Bowl  
 Amber Depression Dishware  
 Lots gray Enamelware - pans, bakeware,  
 water bucket, dipper, funnel, roaster,  
 more  
 Currier & Ives Dishes, blue set & pink set  
 Sets Salt & Pepper, Currier & Ives  
 Red wooden handled - Beaters & Forks  
 Green wooden handled Beaters  
 Wooden Dog  
 Ruby Red Pitcher & Glasses  
 Grecian Vases Bowl, Imperial stone  
 #2 Western Crock • Gallon Crock Jug  
 Oriental Decanters  
 Green Cream & Sugar  
 CorningWare, lots • Lamb Cake Mold  
 U.S. Creamer • Zinc Lids  
 Cast Iron - Dutch Ovens #8, Skillets #7,  
 #5, #8, Lodge, Square Skillet, Wagner #8  
 Roaster  
 Cast Iron Trivets • Cherry Pitter  
 Nutmeg Grinder Freya  
 Chalk Little Red Riding Hood  
 Jadeite Juicer  
 Marcrest Pottery-Cookie Jar, Jugs, Pitchers  
 # Crock  
 King Kutter Sausage Grinder  
 Superman Glasses  
 Old Egg Nog Bowl, Hazel Atlas  
 GE Pot & Lid  
 King Kutter Shears  
 King Kutter Box Cutter  
 Falstaff Items • Small Cow Skulls  
 Figurines, musical instrument players  
 Made in Japan Figurines  
 Robert's Rules of Order book  
 Manual for Courts - Martial U.S. Army 1928  
 Popeye Figurine  
 Old Political Buttons  
 Old Porcelain Doll • Scope  
 Bug Killer • Wooden Bucket  
 Crock Jug • Wooden Ammo Box  
 Wooden Tortilla Maker, primitive  
 Wooden Ducks  
 Geofus Glassware - Bowls  
 Old Food Chopper, red wooden handle  
 A&W Mugs • Kerosene Lanterns  
 The Crows Nest Tavern Wooden Box  
 Metal Indian cut-out mounted on rock  
 Meat Tenderizer - old  
 Jack Daniels Glasses  
 Glass Breast Pump  
 Glass Mickey & Minnie Figurines  
 Homer Laughlin 1929 Dishware  
 Falstaff Brewing Corp. 100 Shares,  
 Common Stock  
 Kitchen Craft Bowls Set  
 Old Perfume Bottles  
 Wooden Thread Spool  
 Falstaff Cooler, Lights, Ash Trays, Old Beer  
 Bottles  
 Ash Trays - Aladdin, Pearl, Kool

Antiques & Collectible Books  
 Chili Pepper Apron  
 Director Chairs  
 Coleman Aluminium Campstove, red  
 Coleman Camp Table w/sink  
 Gate Leg Drop Leaf Table  
 Pack Saddle, for mule  
 Old Rocking Chairs  
 Humphrey Radiator Cast Iron Heater from  
 motel  
 Target Rack • Hand Crafted Hall Trees  
 Metal Detector • Old Wooden Spoons  
 Old Wooden Step Stool  
 Fox Hunting Card Table  
 Metal Folding Table  
 Sofa Table, 6 legged  
 White enamel Double Sink  
 Shor Glass Collection • Wooden Bottles  
 Wooden Salad Bowl Set  
 Metal Candle Holders, Candle Sticks  
 Playboy Glasses & Coaster  
 Card Suit Pics  
 Collinsware Short Straws  
 Pressed Cut Glassware w/daisy  
 1913 Denver Republican Newspaper Page  
 Donut Maker • Blood Pressure Cuff  
 Wellington Collection Wolf Bust  
 Replica .44 cal Colt Peacemaker Model  
 1870 w/Texas Ranger Badge & Wyatt  
 Earp Picture, all decorative in a case  
 Vintage metal handheld Hair Dryer  
 Currier & Ives Glasses  
 Budweiser Glasses  
 Duck Decoy, Turkey Decoy  
 Rack made from Horseshoes  
 Cabella Cast Iron Drip Pan  
 Ruby Red Vases & Glassware  
 Santa & Snowmen roly-polys  
 Brown Crock Pitcher  
 Federal Glassware, lots  
 Blue enamel Coffee Pot  
 Fire King Dishware  
 Wooden Nut Cracker Bowl  
 Small Collectible Pitchers  
 Playing Card Pitcher & Shot Glasses  
 Lot Avon Decanters  
 Green Devil'd Egg Plate and Salt & Pepper  
 Bird in nest container  
 Old wooden handled Flatware  
 U.S. Mail Bag, domestic  
 Old Waffle Iron • Old Can Opener  
 Harley Davidson Ornaments  
 Set Pyrex Bowls • Fiesta Bowls  
 Anchor Hocking Bakeware w/lids  
 Sets of China • Cake Stand  
 Paula Dean Baking Pan  
 Glass Storage Dishes • Tupperware Dish  
 Glass Pie Plates  
 World Market Stackable Cups in rack  
 Cookbooks • Wooden Mortar & Pestle  
 Mini Springform Pans  
 Small Appliances  
 Coffee Maker, Electric Roaster, Turbo  
 Baker  
 Jack Lalanne Juicer  
 Food Processor • George Foreman Grill  
 Wooden Cutting Boards  
 Oriental Stock Pot • Farberware Dishes

Lot Glasses & Cups • Cabernet Dishware  
 Decorative Knobs  
 Lot Plastic Ware, Tupperware  
 Large Lot Christmas Decor, Villages, Trees,  
 Candles, Wreaths  
 Holiday Express Train  
 Collection Sea Shells  
 Lot Luggage & Totes  
 Microwave • Wooden Tables  
 Lamps • Storage Bins  
 Portable Sewing Machine  
 Lots Linens, Tablecloths, Sheets, Pillows,  
 Curtains & Napkins, Rugs  
 Fabric Storage Boxes • Rugs  
 Hyper Tough Electric Chainsaw  
 Wrenches, Socket Sets, Hammers, Levels  
 Files, Nails, Screws  
 Air Mattress & Pump  
 Medicine Cabinet  
 Power-Strips, Extension Cords  
 Plumbing Supplies  
 Lot Door Knobs, new, lock & key  
 Small Cabinet Top  
 Cleaning Supplies  
 Plant Food • Drop Light  
 Smart Code Entry • Porch Light  
 Mops, Brooms, Rakes, Shovels  
 Limb Saw, electric • Weed Trimmer  
 Chairs in Bag • Metal Shelving  
 Patio Umbrella • Furniture Movers  
 Flower Pots • Eureka Vacuum  
 Dining Chairs, 6 white  
 CB Radios • Dremel Tool  
 Brad Nail Gun • Impact Wrench  
 Soldering Gun  
 Coleman Camp Stove, cast iron burner,  
 model 1938 & 1939  
 Hunting Clothes  
 Fishing Plugs - Wooden Crazy Crawler,  
 Heddon wooden Lucky 13  
 A-Frame Gun Rack  
 Rods & Reels, Fly Fishing,  
 Tool Pouch  
 12 in. Disc Grind Wheel  
 Reciprocating Saw  
 15 in. Tires, Chevrolet rims  
 Farmhouse Table  
 Trash Cans • Wicker Hamper  
 Dining Table  
 Hutch  
 Love Seat & Overstuffed Chair, tan  
 Gray Chair  
 Reclining Couch, leather  
 High Boy Chest  
 File Cabinet  
 Bar Stools, upholstered seats  
 Settee, 2 Chairs & Table, Lawn Furniture  
 Queen Bed w/Round Tables, Chest,  
 Hamper, Lamps, teal blue, nice, Maine  
 Cottage brand  
 2 Wicker Chairs, Tables & Shelf, aqua blue  
 Round End Tables  
 Queen Bed & Chest  
 Tool rack w/Drawers  
 Baker Rack  
 TV Stands  
 Computer Desk & Chair  
 Electric Smoker

**GUNS**  
 Remington 742 w/scope .30-06  
 Remington 760 w/scope .30-06  
 Ithaca 12 ga. Model 37 pump  
 Thompson Clone made by Volunteer  
 Commando Mark V  
 Rossi .22 pump Model 62 SAC, nickel  
 plated  
 6.5 Creedmoore PSA AR10 Platform  
**AMMO**  
 20 ga.  
 6.5 Creedmoore  
 7.62x39mm  
 .223  
 7.62x54mm  
 .308 Ballistic Tip  
 12 ga.  
 Bag of .25-06 brass  
 Lee Press

Tall Cabinet  
 Brown Couch  
 Glass Front Cabinet  
 Tile Redi-Shower Base  
 Air Conditioner, 220 v.  
 Set Silverware in case  
 Gerber Knife  
 Storage Footstool  
 Dishwasher  
 Room Divider  
 Aluminum Step Ladder  
 Commercial Char-Broil Grill  
 Bosch Nexxt premium front loading  
 Washer & Dryer, electric  
 Samsung Flat Screen TV  
 Base Cabinet 15 in.  
 Whirlpool top load Washer & Dryer,  
 electric  
 10x10 Back Drops  
 16x16 Swimming Pool & Pump  
 Dorm Fridge  
 Lounge Chair  
 Mongoose Bicycle  
 Shop Light on Stand  
 Coolers  
 15" Chevy Rally Wheels  
 MX1500 Generator  
 Bench Top Drill Press  
 King 4-1/2" Metal Band Saw  
 Bench Grinder  
 Drill Vise  
 Barker Machinist Tools  
 Vise  
 Eldredge "B" Treadle Sewing Machine  
 Coffin Top  
 Kith  
 Poulan Chainsaw  
 Waterfall Bedroom Set  
 Wooden Ammunition Box  
 Hand Planes  
 Hand Tools  
 Old Malt Mixer  
 Copper Spittoon  
 30" Oak Door Slabs  
 Tool Box • Work Bench  
 Other items too numerous to mention

**Miller and Anderson - Owners**

Terms - Cash or Approved Check. Nothing Removed Until Settled For. Not Responsible For Accidents. All guarantees are between buyer and seller. Must show ID to get Buyers #. Announcements Made Day Of Sale Take Precedence Over Printed Matter.

**Buckner & Gately Auction Service  
 Auctioneers**

Steve Buckner 573-674-2686

Neal Gately 573-202-3132

# Sam CRAWFORD AUCTION SERVICE LLC

Will sell the following located 4 miles West of Wheatland, MO or 6 miles East of Weaubleau, MO on Hwy. 54 to Hwy. 83 then North 1/2 mile to Hwy. T, then West 1 1/2 miles to Co. Rd. 71, then North 1 mile. Watch for auction signs.

## SATURDAY, MAY 14<sup>TH</sup>, 2022 - 9:30 AM

### VEHICLES - TRACTOR & MACHINERY - TOOLS - COLLECTIBLES - MISCELLANEOUS



#### VEHICLES - TRAILER

##### CAMPER - SELLS 12 NOON

- '07 Kia LX Mini Van, 155K, Shedded, Runs Good
- '04 Ford 250 3/4 Crew Cab, 4x4, Auto, Gas, 226K, Shedded, Runs Good
- Bumper Hitch 16' Utility Trailer, Shedded
- 2000 Apache Slide In Camper, Shedded, Good
- '77 Landau 16' Aluminum Fishing Boat, Trailer, '72 Johnson 25 HP Motor, Shedded



#### TRACTOR - MACHINERY

##### SELL NEAR 12:15

- John Deere 60 Narrow Front, Power Steering, Live Power, 3 Pt., Good Rubber
- John Deere 3 Pt. 7' Field Field Tiller 3 pt. Carry-All
- 2 Wheel Farm Trailer, 5x8'
- John Deere 3Pt. 8' Tandem Disk
- John Deere #9 3 Pt. 7' Sickle Mower
- John Deere Front Mt. 2 Row Cultivator
- John Deere 2 Bottom Drag Plow
- John Deere Van Brunt 11 Hold Grain Drill
- John Deere 3 Pt. 2 Row Corn Cultivator 3 Pt. Scoop
- 3 Pt. 6' Blade
- Deerborn 3 Pt. 2 Bottom Plow
- Iron Wheel Wagon w/Box
- King Kutter 3 Pt. Brush Cutter
- 4 Wheel Flatbed Wagon
- Ferguson 3 Pt. 5' Blade
- 3 Section Harrow

*Above Listed Machinery All Shedded*  
 John Deere H Manure Spreader  
 3 Pt. Bale Spear  
 3 Pt. Boom  
 3 Pt. 2 Row Cultivator  
 Iron Wheel Drag Rake

#### FARM MISC.

- Some Steel Posts
- Some Wire
- 10-15 Wire Cattle Panels
- 2 Farm Gates 6 & 10' New
- Homemade Wood Splitter, 2 Cyl., Gas Motor
- 12V Sprayer
- Lot Lumber 1" & 2"
- Used Craft Lumber
- 10-12 Landscape Ties
- 20+ Sheets Used Metal Roofing
- Industrial Air 15 Gal. Air Compressor
- Enco Air Compressor
- 2 Air Tanks
- Troy Bilt "Tuffy" Garden Tiller
- Elect. Cement Mixer
- Rollign Stands
- Homelite Blower
- Platform Feed Scales
- Lot Long Handle Tools
- Good Asst. Wrenches - Sockets
- Toolboxes
- Good Asst. Power Hand Tools
- Levels
- 2 Hose Reels - Garden Hose
- Extension Cords
- 2 - 3 Wheelbarrows
- 2 Lawn Rollers
- Pair Car Ramps
- Aluminum Extension Ladder
- Wood Step Ladder
- 4-5 Bales Straw
- 5-6 House Jacks
- Hydraulic Bottle Jack
- Rods & Reels
- Fishing Misc.
- 2 Sets Boat Oars - Paddles
- Minnow Trap - Bucket
- Yard Windmill
- Red Wagon

- 2 Boxes Aluminum Screen
- Plastic Barrels
- 2 Panniers for Pack Horses
- Lot Used Brick - Part Needs to Be Cleaned
- Set Ping Golf Clubs, Canoe
- Mathews Switch Back Compound Left Hand Bow, Arrows
- 2 Nascar Jackets
- Nascar Pictures - Caps, Other Items, Most Jeff Gordon
- Brother PE-150 Sewing/Embroidery Machine & Accessories

#### ANTIQUES & COLLECTIBLES

- 3 Wood Porch Swing
- 3-4 Metal Lawn Chairs
- Crouquet Set
- Pair Snow Shoes
- 8-10 Wood Pulleys
- Hand Well Pump
- Neck Yoke, Auger
- Primitive Wood Table, 8' Long
- 10' Picnic Bench
- Graite Top Table
- 2 Wood Storage Cabinets
- Wood Door
- Lot Picture Frames
- Cross Cut Saw
- Other Old Carpenter Tools
- Wire Yard Gate
- Water Can, Oil Cans
- Small Stuffed Bear
- Lot Totes Material - Christmas Decorations
- 2 Gallon Jars Buttons
- Coke Frame Olympic Pins
- 2 Small Coke Bottles
- 12-15 Pocket Knives
- 2 Ladies Watches
- 2 Painted Ostrich Eggs
- 6 Pc. Scrimshaw

*Lots of good items at this auction for a really well-like couple in this community who where losts in a tragic house fire. 2 Rings running part of morning. Loader on site.*

# Sam CRAWFORD Auction Service LLC



**TERMS:** Cash or good check. Nothing removed until settled for. Not responsible for accidents. Lunch available. Statements made day of sale take precedence over printed matter. All items sell as is. No warranties given or implied.

**417-998-6629**  
 Cross Timbers, Mo.

CrawfordAuctionService.com

Sam  
417-328-9137

Chase  
417-399-1904

Chance, CAI  
417-298-1751

Tom Poynter  
Jack Lancaster

## Family of Jean Anton & Wayne Berge

# Sam CRAWFORD AUCTION SERVICE LLC FARM ESTATE AUCTION

Due to the passing of Mr. John, will sell the following located 1 mile East of Weaubleau, MO on Hwy. 54 to Hwy. H, then South 2 miles - Watch for Auction Signs

## WEDNESDAY, MAY 18<sup>TH</sup>, 2022 - 9:30 AM

*TRACTORS - MACHINERY - ATVs - FARM MISC. - TOOLS - MISC.*



**GUNS - SELL AT 9:30**

Remington 870 12 Ga. Pump  
Winchester 12 12 Ga. Pump  
Pardner 12 Ga. Single Shot  
2 Cap Chur Vet Dart Guns  
Paintball Gun  
2 Pellet Rifles  
Lot Reloading Die Presses, Most  
For Rifles, 222-6MM-270-30.06  
Lots Brass - Lead  
Some Powder  
Tumblers  
Gun Vise  
Lot Shooters Bibles

2715 Bush Hog 15' Folding  
Brush Cutter, 540 PTO  
3 Pt. Danuser Hyd. Drive Post  
Hole Digger w/Stand, Like New  
3 Pt. Worksaver Hyd. Post Driver  
HD P-16, Used Little  
3 Pt. Danuser Hyd. Woodsplitter  
3 Pt. Ford 8' Disc  
3 Pt. 7' Blade  
3 Pt. Ford 3 Bottom & 4 Bottom  
Plow  
3 Pt. Ford 515 Sickle Mower  
3 Pt. Boom Sprayer  
3 Pt. Herd 750 PTO Seeder  
3 Pt. PTO Cement Mixer, Hyd.  
Dump

Calf Catch for ATV  
5-6 Poly Bottom Feed Bunks  
Calf Warmer Hutch  
4 Solar Fencers  
Lots New Plastic Insulators - Ex-  
tension - Electric Fence Misc.

**HAY**

Approx. 70 Big Bales '21 Mixed  
Hay, Outside, Net Wrapped

Hyd. Press  
Cutting Torch & Cart  
10 - 12 Jts. Pipe 4", Approx. 10'  
Long  
9-10 Jts. Pipe, 3", 30'  
Chain Link Fence & Pipe  
Wire Unroller For ATV  
Cab Cover For ATV  
Older Alum. Flat Boat & Trailer  
Johnson 10 1/2 HP Outboard Mo-  
tor & Stand  
2 Live Traps  
Asst. Oil & Supplies  
Electric Cement Mixer  
Old Single Wide for Salvage  
Some Scrap Iron  
Used Tires & Wheels  
Vet Supplies  
Lot All Flex Ear Tags  
Calf Puller  
Troy Bilt Horse Rear Tine Tiller,  
Used Little  
2 DR Trimmers  
Lawn Boy Push Trimmer  
Lawn Mower Dolly  
Lots Misc.

**TRACTORS - SELL AT 12:30**

'18 New Holland T4 100 Utility,  
4x4, Cab, LH Reverser w/New  
Holland 655 TL Loader &  
Bucket, 1035 Hrs., 99 Eng. HP  
'92 Ford 4630 Diesel, ROPS,  
Canopy, 8 Speed, Dual Hyd.,  
3200 Hrs., 55 PTO HP

3 Pt. Dew Eze Bale Unroller  
John Deere 13 Hole Grain Drill -  
Works  
HLA HD Grapple Bucket for  
Tractor/Skid Steer  
3 Pt. Bush Hog 6' Brush Cutter  
Older Ford 3 Pt. 5' Brushcutter  
HD Forks For Loader  
3 Section Harrow  
Loader Balespike  
3 Pt. Boom  
3 Pt. Bale Spike  
Metal Farm Trailer  
Electric 4 Wheel Wagon Flatbed  
w/Hoist  
Old Iron Wheel Grain Drill -  
Horsedrawn Tile Plow - Dump  
Rake - Slip

**TOOLS & MISC.**

2 Electric Welders, Miller Thun-  
derbolt - Hobart w/Carts  
Lincoln 180 Pro Mig Welder w/  
Bottle & Cart  
110 Welder  
Lot Welding Rod  
220 Compressor  
Speedaire Port. Compressor  
Craftsman Blade Sharpener  
Black & Decker Chop Saw  
Walker Turner HD Drill Press  
Lot Large Drill Bits  
Parts Washer  
Oregon Chain Sharpener  
6" Vise & Stand  
Star Water Pump - Gas, New  
Assorted Power Hand Tools  
Topside Creeper  
Wheel Dollie  
Pair HD Jack Stands  
Stihl 038AV & 028 Chain Saws  
Gas Trimmers  
Lot Asst. Long Handle Tools  
Lot Bolts - Nuts - Etc.  
Older Wrenches & Tools  
4-5 Pipe Wrenches  
Bolt Cutters  
Pr. Aluminum Ramps  
2 Lawn Carts  
Tire Slide Hammer

**ANTIQUES & OTHER**

Treadle Sewing Machine - 20's  
2 Electric Lamps  
7' Tall Kitchen Cupboard - No  
Doors  
Old Books  
Old TV - Radio Supplies - Equip-  
ment  
Cream Separator  
Dazey 40# Glass Churn  
Sausage Grinder  
Ping Pong Table  
Fireplace Insert  
Outside Christmas Decorations  
Other Misc.  
*Large auction with lots of good  
items. Will be running 2 rings most  
of morning. Loader on site sale day.*

**ATVs - SELLS 12:30**

'19 Honda Pioneer 1000 Side by  
Side, 4x4, 1285 Hrs.  
'17 Honda Rancher 4 Wheeler,  
420 , 4x4, 664 Hrs.  
'88 Honda 300 Four Trax 4  
Wheeler w/12V Sprayer

**MACHINERY**

**SELLS AFTER TRACTORS**

'17 New Holland Roll Belt 450  
Big Baler, Net Wrap, Approx.  
3000 Bales  
'19 New Holland Duradisc 210M  
Mow Max Disc Bine, 10', Used  
2 Season, Like New  
New Holland 163 Tedder

**FARM MISC.**

13 Poly Bale Feeders  
Elk River Single Side Creep  
Feeder  
Metal Creep Feeder  
Galv. Oblong & Poly Water  
Tanks

**Sam CRAWFORD Auction Service LLC**



**TERMS:** Cash or good check. Nothing removed until settled for. Not responsible for accidents. Lunch available. State-  
ments made day of sale take precedence over printed  
matter. All items sell as is. No warranties given or implied.

**417-998-6629**  
Cross Timbers, Mo.

CrawfordAuctionService.com

Sam  
417-328-9137

Chase  
417-399-1904

Chance, CAI  
417-298-1751

Tom Poynter  
Jack Lancaster

## Wayne Sirl John Estate

# JONES ESTATE AUCTION

## Sunday, May 15, 2022 • 12:00 P.M.

1348 Co. Rd. 611, Freeburg, MO

**DIRECTIONS: From Westphalia Take Hwy 63 South Approx. 2 Miles, Turn Left On Co. Rd. 611, To Home On Left, Watch For Signs Day Of Sale.**

### GUNS, ACCESSORIES & SAFES SELL AT 2:00 P.M.

Colt Python 357; Colt Government Model 1911 Series 70 .45 Auto; T Barker 12ga. Hammer Double Barrel; Remington Model 572, 22 LR, Semi, Field Master; 16 ga. Double Barrel Stevens; Stevens Crack Shot 26; Remington Semi 12 Browning Patent; Beretta Gardone VT 1942 xx; 1891 Marlin Lever 38-55 Octagon Barrel; Revelation 16 ga. Auto; 3-BB Guns; Marlin Model 57 , 22 SL-LR Lever; Remington Model 721, 30-06 Bolt; Mauser 98 Model 257; H & R Bolt 20 ga.; Remington Field Master Model 121; Japanese Military Rifle; Remington Model 11 12 ga. (needs stock); Smith & Wesson Revolver 38;; Double Tap Point 45 ACP 2 shot w/ Vent Rib; Champion Safe Co. Gun Safe w/ Humidity Bar, 73T x 41W 28 Deep; Gun Safe 43T 2W; SMNA Double Door Gun Safe 6ft x 38W 22 Deep; Plastic Gun Cases; Winchester Wooden Shell Box 44-40; Misc. Ammo; Nice Misc. Gun Cases; Ammo Boxes; Misc. Reloading Items; Mini 14 Mags; Hunting Knives; Cleaning Rods; Numerous Gun Books; Misc. Gun Books; Misc. Gun Parts; Reloading Supplies; Misc. Gun Parts; Gun Polisher Machine & Accessories; Lots of Empty Brass Shells.



### ANTIQUES, COLLECTIBLES, HOUSEHOLD & FURNITURE

Brown Lift Chair (Like New); King Size Oak 3pc. Bedroom Suit w. S- Cape Electric Adjustable Headboard & Footboard , Dresser w/ Mirror (Excellent Condition); 2- Wynwood Night Stands; Cedar Chest; Rolling Bar Stools; Wood Desk; Drop Leaf Table; Hide-a-Bed Sofa; Folding Tables; Oak Desk w/ Return; Oak Bookcase; Metal Desk; Franciscan Desert Rose-6 Place Settings; Caravel Dish Set; Jadite Sugar & Creamer Jars; Makisa; Hens on a Nest; Green Depression Glass (Sandwich Pattern); Small Hens on a Nest; 23-Collector Knives; 15- American Heritage Books; Wooden Coca-Cola Crates; Old Nintendo System; 600 Power Telescope; Small Chest Freezer; Ironing Board; Extra Wide Heavy Duty Walker; Stair Lift w/ Remote; Small Store Safe; Heater; Dehumidifier; 2- Extra Big Walker; Nordic Track Pro Ski Machine; Nordic Track Treadmill 82550; Sony Bravia Flat Screen TV; Weider Crossbow.

### TOOLS & MISC.

8- 4x8 Peg Boards; Lawn Spreader; Small Air Compressor; 10 gal. Shop Vac; 2 Wheel Heavy Duty Dolly; Olympic Professional Gold & Silver Plating Equipment; 15 Drawer Industrial Cabinet; Industrial Cabinet; 16 Drawer Steel Tech Stainless Steel Tool Box; Machinist Micrometer Tools; Tap & Dye Sets; C-Clamps; Buffalo Bench Top Drill Press; Craftsman Tool Box; Workbench Desk w/Vise; Metal Cabinet; Acetylene Torch; Small Grizzly Bench Top Metal Band Saw; Craftsman Table Top Lathe; Baldor Double Wheel Grinder; Thor Bench Grinder; Metal Tool Box; Rubber Floor Mats; Tool Boy; Log Chain; Gardening Tools; Assortment of Tool Boxes.

### ESTATE OF C. ROY JONES



**Note:** C. Roy did Gun-Smithing & Repair. There will be a lot of gun related items in this sale. Due to his death, Mary has sold their home & is moving to JCMO. Make plans to attend. Rick

**WATCH OUR WEBSITE FOR FURTHER LISTINGS AND PHOTOS.**

**Terms:** Cash or good check with proper identification. All sales are final. Everything sells as is, where is. Proper identification is necessary to obtain a buyer's number. Announcements day of sale supersede all printed material.

## RICHARD MOFFAT AUCTION SERVICE



573-761-4293  
Jefferson City, MO

Auctioneers:  
Richard Moffat & BJ Moffat  
www.moffatauction.com

573-690-2823  
Linn, MO



# OLD FASHIONED LIVE PUBLIC AUCTION

I will auction the following located at  
493 High Street, Prairie Home, MO.  
**Saturday, May 21 – 10 AM**

•**MODEL T • 1926 Model T Roadster,**  
restored and runs good, 12 volt  
system, 4 cyl. engine, alternator, dis-  
tributor, brake lights, signal lights,  
Ruckstell two speed rear axle

•**GOLF CART, MOWER & TRAILERS •**  
EZ Go gas golf cart, runs good • 2017  
Rivercraft 8' x 10' wood floor 2 wheel  
trailer w/drop ramp • 1989 American  
tilt bed golf car or lawn mower trailer  
w/treadplate floor • Poulan Pro w/  
Briggs 25 HP lawn tractor w/48" deck •  
Tilt bed lawn cart • Aluminum 22" x 60"  
tread plate tool box

•**TOOLS (sells first)** All Star 220 v. mig  
wire welder w/oxygen tank • Robinator  
12467 vacuum pump • 3/4" socket set  
2" to 7/8", ratchet, T-Bar, extension • 7  
dwr. too chest • Other tool box & tools  
• Craftsman 1/2 T floor jack • 2 folding  
saw horses • Screwdrivers, sockets,  
wrenches, other tools • Double rock  
grinder • Circular saw & electric tools • 2  
motorcycle helmets

•**GUNS •** Savage model 24 rifle/  
shotgun .22/.410 • H & R Topper .410  
single shotgun • Iver Johnson .22LR U S  
Carbine • CBC model SB 12 ga. 3" single  
shotgun • Daisy model 15XT Powerline  
BB pistol • Small group of .22, .410 & BB  
ammo

**Auctioneers Note:** Nice to do a LIVE  
auction. This is not a large auction but  
has some very nice items. Start selling  
tools at 10 with Model T, golf cart, trail-  
ers, lawn mower near noon followed  
by guns

**PAUL TERRY, owner**

**Voorheis  
Auction & Realty**  
Brent Voorheis 573-808-3989

**BLUE HEELER PUPPIES:** Raised for 50  
years, good with cattle or as pets. \$125.  
660-553-2333. Cole Camp.

**8 HOLE WOODEN HOG FEEDER:**  
Good condition. \$175 obo. 636-583-5074.  
Union.

**PYRENEES PUPS READY:** From working  
parents. lastchanceranchus@yahoo.com.  
573-743-3436. Cherryville.

**JOHN DEERE 2955 DIESIEL  
TRACTOR:** Cab & Air. 85 H.P. w/ JA 720  
loader. \$30,000. 573-765-4406. Richland.

**POULTRY OPERATION FOR SALE:**  
Quail eggs, incubators, brooders, cages, may  
trade. 417-650-0402. Lebanon.

**PARTING OUT ALLIS CHALMERS  
TRACTORS:** Models B.C. CA. WD  
WD45. D14. D15. D17. D19. 573-690-9406.  
Jefferson City.

**TOMATO PLANTS FOR SALE:** Some  
flowers and a variety of other plants. 19220  
Maries Road 636, Dixon MO. 65459.

**FOUR HOUSE TRAILER RIMS: \$10  
each.** 573-308-5884. Rolla.

# #1 AUCTION SOURCE IN CENTRAL MISSOURI

## SERVING 34 COUNTIES!

**IN PRINT  
& ONLINE!**

**TO ADVERTISE YOUR AUCTION, CALL  
417-532-9131**

100 E. Commercial, Lebanon  
www.myweeklytrader.com  
www.facebook.com/myweeklytrader

**Larry Heisel Rentals**  
**LARGE or SMALL...**  
  
**We Rent!**  
 Crawler Loaders • Excavators • Backhoes  
 Call Larry!  
**573-779-1500**  
 www.larryheiselequipment.com  
 Rental Available in 636 or 573 area code

**1976 JAGUAR XJS:** V12, Chevy V8 conversion, runs but needs work. (Dried brakes, steering leaks, gas tank leaks) \$1,850. 573-759-7143. Vienna.

**PASTURE SPRAYER:** Tandem axle. 750 gallons Hyd. pump. Single jet. \$2,300. 573-765-4406. Richland.

**FOR SALE:** Four, Three-door Merchandiser Coolers, Model Number GDM69 by True Manufacturing, \$2,500 each. 307-708-0181. Seymour.

**3 GUMBALL MACHINES:** with stands. \$50 each. Leave Message. 417-924-9941. Mansfield.

**2004 F150:** 5-4 crew 4x4. 151k. Engine needs TLC. \$8000 obo. 573-261-0513. Salem.

**STIHL FS100RX HAND TRIMMER:** Cost new \$350. Now at \$185. Like new. 417-844-4319. Springfield.

**PLAD PANTRY**  
**DISCOUNT & SURPLUS FOODS**  
**FRESH PRODUCE LLC**  
**417-532-4700**



Teriyaki Pork Tenderloin ..... **\$2.99** lb.  
 Organic Half & Half ..... **\$1.29** 1 qt.  
 Smoked Sausage ..... **\$21.99** 11 lbs.  
 Vanilla Ice Cream w/ Sprinkles ..... **\$5.49** 1 gal.  
 Orange Pineapple Energy Drink .... **\$8.99** 24-8 oz.

1571 State Hwy 64 • Tunas, MO 65764  
 Hours: 8:30 a.m. to 5:30 p.m. • Closed Wed. & Sun.

**SMALL ANIMAL SALE**  
  
 May 13 @ 6pm  
 • Sheep • Goats  
 • Chickens • Ponies  
 • Calves • Rabbits  
 Accepting Stock & Misc. Farm. Equipment at noon.  
**Texas County STOCKYARDS**  
 245 2<sup>nd</sup> St. • Summerville, MO  
 NEW OWNERS! MITCH 417-241-5558 CHANTIL 417-217-0612

**BICYCLES:** 2 Boys, 1 girl. \$60 for all. 417-753-2747. Rogersville.

**GOOSENECK TRAILER: (no Title) \$800.** 417-322-0161. Lebanon.

**3 GENTS WITTNAUER WRIST WATCHES:** 10k gold + 23J. All \$200. 573-764-3517. Call in P.M.


**HARLEY FAT BOBS:** Custom flame paint w/ gas caps + lines. \$100. 573-764-3517. Call in P.M.

**COLT REVOLVER DEALER CATALOGS:** Circa 1950's + 1960's. All for \$100. 573-764-3517. Call in P.M.

**FRUIT TREES FOR SALE: Apple, Peach, Pear, Plum, Apricot, \$20 each.** 417-664-0742. Lebanon.

**ALLIS CHALMERS TRACTOR: WD45.** Restored. Wide front. \$2,450. 573-636-8000. Jefferson City.

**MID MISSOURI STOCKYARDS**  
  
**REGULAR SALE EVERY THURSDAY 11AM**  
**HAWK ANGUS SALE • MAY 21ST AT 1PM**  
 WATCH OUR WEEKLY SALE IN REAL TIME ON [DVAUCTION.COM](http://DVAUCTION.COM)  
 For Farm Visits, Market Updates, or Trucking  
 Call **Zach Cox 417-777-1320**  
**Dan Romine 573-578-4939**  
**Competitive Buyers!**  
**Competitive Commission!**  
**Competitive Market!**  
 Barn: 417-532-9292  
**1-44 • Exit 123 "just outside of Lebanon"**  
**17505 Route 66, Phillipsburg, MO 65722**  
 For weekly market updates, visit us at [www.midmostockyards.com](http://www.midmostockyards.com)

**BUFFALO LIVESTOCK MARKET LLC**  
  
 276 Hwy 32 W., Buffalo, MO  
**May 7<sup>th</sup>, 2022**  
**Receipts: 572 Head**  
**Feeder Cattle Steady - \$2 Higher.**  
**Cows & Bulls \$1-\$2 Higher.**  
**REPRESENTATIVE STEERS**  
 300-400 @ 185.00 to 218.00  
 400-500 @ 185.00 to 200.00  
 500-600 @ 175.00 to 196.00  
 600-700 @ 145.00 to 167.00  
 700-800 @ 145.00 to 158.00  
 800-900 @ 130.00 to 140.00  
**REPRESENTATIVE HEIFERS**  
 300-400 @ 165.00 to 188.00  
 400-500 @ 155.00 to 172.00  
 500-600 @ 150.00 to 160.00  
 600-700 @ 135.00 to 146.50  
 700-800 @ 125.00 to 135.00  
 800-900 @ 120.00 to 125.00  
**FEEDER BULLS**  
 300-400 @ 170.00 to 215.00  
 400-500 @ 160.00 to 189.00  
 500-600 @ 145.00 to 175.00  
 600-700 @ 140.00 to 150.00  
 700-800 @ 135.00 to 144.00  
 800-900 @ 115.00 to 127.00  
**STOCKS COWS**  
 Bred Cows 850.00 to 1100.00  
 Cow/Calf Pairs 875.00 to 1050.00  
**SLAUGHTER BULLS**  
 High Yield 117.00 to 125.00  
 Low Yield 97.50 to 112.00  
**SLAUGHTER COWS**  
 Fleishy 80.00 to 91.00  
 Med Fleish 76.00 to 88.00  
 Thin Fleish 72.00 to 81.00  
 Extra Thin Shelly 60.00 Down  
**Special Stock Cow & Bull Sale**  
**May 17th at 6:30PM**  
**Watch our Facebook Page for Pictures**  
 Taking Consignments Now. CALL:  
 Leon 417-588-6185  
 Cole 417-733-0736  
 Barn 417-345-8122

---

**MON-WED MARKET REPORT**  
 Listen to KJEL 103.7FM • Lebanon or KYOO 99FM • Bolivar  
**VIEW OUR SALES AT [CATTLEUSA.COM](http://CATTLEUSA.COM)**  
**CALL FOR TRUCKING OR ON-FARM VISIT**  
**Lyle Caselman • Owner-Manager**  
**417-345-7876 • mobile 417-533-2944**  
**Leon Caselman • Owner**  
**417-345-4514 • mobile • 417-588-6185**

**FOR SALE: 2 New Holland 851 balers, field ready, \$3,000. 573-422-3945. Vienna.**

**TRACTORS:** Collector 1947 Oliver "80" Standard. New Magneto, rear tires. \$4,200. Allis-Chalmers "WD." Stout, 3-Point, N-F. Reliable! 417-848-8754. Brookline.

**FARMALL "H" TRACTOR:** Overhauled, New Parts, Good Rubber. Call for details. \$1750. 417-848-8754. Springfield.

**HENRY BIG BOY 357/38 SPECIAL:** \$1,500. Also, marlin 357 lever action, take offer. 573-374-1307. Sunrise Beach.

**MAYTAG ELECTRIC DRYER:** Over size capacity. Heavy Duty. Excellent Condition. \$150. 210-787-8222. Linn Creek.

**TOOL AND CUTTER GRINDING SHOP:** w/ 2 optical comparators manual machines & many hand tools. \$5,000 for all. Will Separate. 573-438-9225. Cadet.

**PALOMINO QUARTER HORSE MARE:** 9 y/o. Good trail ride. \$1,000. 417-533-4704. Lebanon.

**FERGUSON 3-POINT 2-BOTTOM PLOW:** \$350. 573-765-4406. Richland.


**STORY & PICTURES BOOK OF OLD LINN CREEK:** Haha Tonka and Camden County, by T. Victor Jeffries, 72 pages. \$5.00 postpaid. (417)532-2045. (Leave message and phone number). Lebanon.

**WANTING TO BUY:** 3 Stage torque convertor and souped-up transmission for '05 Duramax. 573-953-7589. Dixon.

**JOHN DEERE 275 9FT DISK MOWER:** \$6,250. 573-765-4406. Richland.

**FORD 5600 DIESEL TRACTOR:** Good. \$8,850. 573-765-4406. Richland.

**BUFFALO LIVESTOCK MARKET LLC**  
 276 Hwy 32 West Buffalo, Missouri  
 417-345-8122



**SPECIAL STOCK COW & BULL SALE**  
 Tuesday, May 17th @ 6:30pm

**EARLY CONSIGNMENTS INCLUDE:**

- 15 Blk pairs, 5-SS, Calves 250-375#.
- 13 Blk Cows, all home-raised, 3-6 yrs. old, Bred Angus.
- 25 Blk Cows, 4-6 yrs. old, 2nd & 3rd Stage, Bred Angus or Sim Angus Bulls.
- 15 Charx Cows, 3-7 yrs. old, 3rd Stage, Bred Blk or Red Angus.
- 30 Blk, Brangus x Cows, 2nd Calf to 7 yrs. old, Bred Angus Bulls, some pairs.
- 27 Mostly Blk Cows, 7-SS yrs. old, pairs & 3rd Stage, Calves 300-400#.
- 4 Brahman X F-1 Hfrs., 650-750#, hand-raised.

**Bulls:**

- 1 2 yrs. old Red Balancer Bull.
- 1 3 1/2 yrs. old, Blk Angus Bull.
- 4 Angus Composite Bulls, 14-18 months.
- 2 Char Bulls, 12-16 months.
- 2 Angus Bulls, 12-16 months.
- 1 Red Gelv - Maine Anjou X Bull, 18 months.
- 1 Grey Brahman Bull Polled, 2 yrs. old.

For info, call Leon Caselman or the Barn.

**MON-WED MARKET REPORT**  
 Listen to KJEL 103.7FM • Lebanon or KYOO 99FM • Bolivar  
**VIEW OUR SALES AT CATTLEUSA.COM**  
**CALL FOR TRUCKING OR ON-FARM VISIT**

**588-6185** | **345-8122**  
 Leon Caselman | Barn

**Pine Ridge Rustic**  
 Log Home Building Supplies

**Services Offered!**

- Installation
- Pre-finishing available on interior & exterior
- Dealer for exterior stains

**www.pineridgerustic.com**

**523 CR 2410 • Salem, MO 65560 • Ph: 573-729-7226**



- Log Siding
- Beveled Siding
- Car Siding • Red Cedar
- Western Cedar • Pine

**ROSSI WHEEL RAKE:** Good. \$4,000. Black 4 row A/C corn head. Banding tool for calves, new in package \$25. Like new bag sewing machine \$175 works good. 417-321-1928. Osceola.

**1210 DAVID BROWN CASE TRACTOR:** 65 horse power. Looks rough but runs, \$850. 417-741-0440.

**IHC 10FT WHEEL DISK:** \$1,800. 573-765-4406. Richland.

**WANTED PROPANE TANK:** 250-500 gallons. 500 gallons preferred. 417-589-6837. Phillipsburg.

**9FT JOHN DEERE 450 PULL BEHIND SICKLE BAR MOWER:** \$475. 11.2 X 36 tractor tire \$50. Used 32" mobile home doors & storm doors \$50 all. 2 Western saddles \$125 each. 417-457-1015. Raymondville.

**HESTON 10FT DISK MOWER:** \$2,900. 573-765-4406. Richland.



# NOW HIRING

PORTABLE BUILDING CARPENTERS



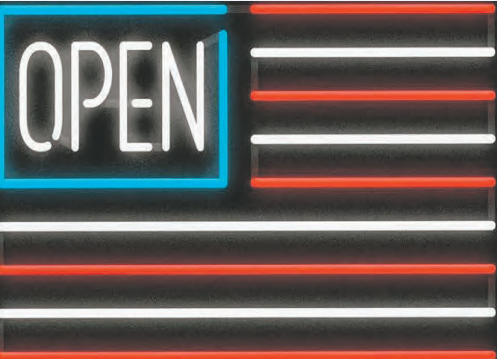
## \$25/HR

+ PRODUCTION BONUSES

HEALTH & LIFE INSURANCE BENEFITS

BUILDING CONDUCTED INSIDE A SHOP IN ROGERSVILLE

Contact Josh @ 870-609-1900 or  
 josh@overmanbuildings.com



**Sale Ends May 31, 2022**  
 Seymour, Missouri 417-935-4201

**Pole Barns & Post Framed Buildings!**

Call for free quote, brochure & color chart.  
 Other sizes also available.

<b>23'x32'x10'</b> \$8,890 Material Only <b>\$10,440</b> Labor Included	<b>23'x40'x10'</b> \$10,210 Material Only <b>\$12,145</b> Labor Included	<b>30'x40'x10'</b> \$12,350 Material Only <b>\$14,870</b> Labor Included	<b>40'x60'x12'</b> \$21,625 Material Only <b>\$27,025</b> Labor Included
---	--	--	--



**NOBODY, BUT NOBODY BEATS OUR PRICES!!!**

10 ft. Slider • Engineered Trusses 8' O.C. • 2x6 Treated Bottom Wrap • Screws • 2x10 Top Wrap • 2x4 Purlins • Full 29 Gauge Steel • Plus 3 ft. Entry Door with Lock

OPTIONS: Sidewall Heights on all Buildings 10', 12', 14' & 16'. Overhead Garage Door. Skylights. Insulation. Wainscoting. Insulated Vinyl Windows. Cupolas. Labor Rates Slightly Higher over 50 Miles from Seymour. Call for YOUR FREE QUOTE TODAY!!!!

<b>PAINTED WHITE, GREEN OR TAN METAL</b> .....	\$116.20
<b>10' - \$36.80</b> <b>12' - \$44.16</b> <b>16' - \$58.88</b>	
<b>MIX &amp; MATCH METAL</b> .....	\$59.99
<b>8' - \$15.20</b> <b>10' - \$19.00</b> <b>12' - \$22.80</b>	
<b>GALVALUME METAL</b> .....	\$99.99
<b>10' - \$31.66</b> <b>12' - \$38.00</b> <b>16' - \$50.66</b>	
<b>GALVANIZED CORRUGATED METAL</b> <b>SOLD OUT!</b>	
<b>8' - \$9.84</b> <b>10' - \$12.30</b> <b>12' - \$14.75</b> <b>16' - \$19.67</b>	

**IN STOCK**

40yr Painted Metal  
**Call**

**KNOTTY PINE DOORS**  
 Starting at  
**\$164.99**

\*\*Prices subject to change without notice\*\*  
**LP SMARTSIDE T-5 LAP B GRADE \$43.59/SQ**

**Car Siding!**  
 1x6 White Pine Siding **79¢** in ft  
 1x8 White Pine Siding **\$1.05** in ft  
 \* 4 Profiles to choose from!  
 Broken Bundles Add 10¢ Per Ft.

**4x8 Sheeting**  
 Less than full units Add \$1 per sheet  
 3/8" Beaded Paneling \$24.99  
 7/16" T111 Siding **\$\$\$OLD**  
 Paneling **\$\$\$OLD**  
 1/2" Plywood **\$\$\$OLD**  
 3/4" Plywood \$49.99  
 3/16 Pegboard \$12.99

**LOTS OF MATERIAL AVAILABLE  
 FOR THOSE IN HOME PROJECTS!**

**REAL WOOD SIDING**  
 2x6 Log Siding **\$1.96** in ft  
 1x8 Beveled Cedar from **99¢** in ft  
 T1-11 Siding from **\$28.99**

**NEW PACKAGE HOMES**



2x6—16" on center-Exterior Stud Walls  
 Residential Roof Trusses-2' on center  
 4/12 pitch with 1' over hang  
 40 year Painted Metal roofing in 20  
 Different Colors  
 Profile Ridge Vent - Ventilated Ridge Cap  
 Vinyl Center Vent Soffit  
 Color Matched Metal Fascia & Gable Trim  
 2 - 3' 6 Panel Entry Doors  
 4 - 3'x4' Vinyl Insulated Windows  
**ALL FIGURED FOR SUITABLE CUSTOMER  
 SUPPLIED SLAB OR SUB-FLOOR**

Shown with Available Options  
 Your Choice of either:  
 Stock 3/8" T111 Siding w/1x4 Pine Window & Door  
 Trim - or -  
 7/16" OSB & House Wrap ready for other finish  
 options

Price for Basic Materials Package (No Labor at this Time)

20x24(480 sq. ft.)	20x32(640 sq. ft.)	20x40(800 sq. ft.)	28x40(1120 sq. ft.)	28x48(1344 sq. ft.)
<b>\$17,450</b>	<b>\$19,999</b>	<b>\$22,386</b>	<b>\$27,768</b>	<b>\$31,230</b>

**DECK PACKAGES**  
**Materials Only**  
 8x8.....\$549.00    10x12.....\$939.00  
 10x10.....\$779.00    10x16.....\$1169.00  
 12x12.....\$1110.00    12x16.....\$1399.00

**QUAKER** Now Stocking Quaker Vinyl Windows  
 2030 \$ 163.99    3030 \$189.99  
 3040 \$206.99    3052 \$225.99  
 3040Twin \$453.99    3052Twin \$497.99



**LUCKY DISCOUNT LUMBER**  
 417-935-4201  
 455 State Hwy C • Seymour MO 65746  
 www.luckydiscountlumber.com



\*Some restrictions apply see store for details. Prices subject to change without notice.

**JOHN DEERE 469 ROUND BALER:** Monitor, kicker, net wrap, push bar, big tires, nice. \$28,500. 573-765-4406. Richland.

**IHC 1086 DIESEL TRACTOR:** Cab & air, 130 hp, shows 3600 hrs. \$16,500. 573-765-4406. Richland.

**BRUSHOG 12815 15FT HYD BRUSHCUTTER:** Very nice. \$17,000. 573-765-4406. Richland.

**JOHN DEERE 2950 DIESEL TRACTOR:** 85hp, cab & air, nice. \$28,000. 573-765-4406. Richland.

**PULL TYPE 10FT BOX BLADE:** w/ wheels & cylinder. Like new. \$1800. 573-765-4406. Richland.

**HISTORY OF ST. ALBANS, MO. : H.B. \$20. 417-532-2045. (leave message and phone number). Lebanon.**

# OFFICIAL TRACTOR OF TOUGH™

INTRODUCING THE ALL-NEW 5100 SERIES



## Marshfield Machinery Inc.

222 E. Madison • Marshfield, MO 65706  
417-859-2117 • [www.marshfieldmachinery.com](http://www.marshfieldmachinery.com)

\*2018 data including all Mahindra group brand sales.  
MahindraUSA.com © 2020 Mahindra USA Inc.



NEW MAHINDRA TRACTORS	
1626 4WD & LDR 26HP	IN STOCK
1635 4WD & LDR 36HP	IN STOCK
2638 4WD & LDR 38HP	IN STOCK
4540 4WD & LDR 41HP	IN STOCK
4550 4WD & LDR 48 HP	IN STOCK
2660 4WD & LDR 60HP	IN STOCK
2670 CAB 4WD & LDR 70HP	IN STOCK
USED TRACTORS	
MF 4609M 90HP 4WD CAB & LDR	48,500
MF 4607M 70HP 4WD CAB & LDR	39,500
MF 5455 95HP 4WD CAB & LDR	42,500
JD 5045E 50HP 4WD LDR	31,500
MAHINDRA 5035 49HP 4WD LDR	21,500
USED ROUND BALERS	
JOHN DEERE 375 5X4	3,500
HESSTON 560 5X6	2,000
NH 850 5X5	1,500
JD 336 SQ BALER	4,000
USED MOWER / CONDITIONER	
NH H7220 9FT M/C	18,000
MF 1363 10FT M/C	17,500
USED MISC.	
VERMEER 8 WHEEL RAKE	1,750
M&W 8WHEEL RAKE	1,750
<h2 style="margin: 0;">Marshfield Machinery Inc.</h2> <p style="margin: 0;">222 E. Madison Marshfield, MO 65706 417-859-2117 <a href="http://www.marshfieldmachinery.com">www.marshfieldmachinery.com</a></p>	

# Starnes Auto LLC

22115 Rt. 66 • Lebanon, MO 65536  
417.718.2707 Cell  
417.588.3159 Office  
[www.starnesauto.com](http://www.starnesauto.com)

<p><b>2000 CHEVY TAHOE</b> BLACK, VIN #4286, 230,XXX MILES..... \$4,800</p> <p><b>2001 FORD F150</b> BLACK, VIN #7429, 124,XXX MILES..... \$7,250</p> <p><b>2002 FORD F150 SUPERCREW</b> MAROON, VIN# 2179 ..... \$6,250</p> <p><b>2002 CHEVY AVALANCHE 4X4</b> BLACK, VIN# 2969, 210,XXX MILES..... \$6,750</p> <p><b>2003 CHEVY SILVERADO 1500 4X4</b> 161,XXX MILES ..... \$6,750</p> <p><b>2004 CHEVY COLORADO</b> ORANGE..... \$5,200</p> <p><b>2007 PONTIAC G6</b> SILVER, VIN# 4027, 128,XXX MILES ..... \$4,500</p> <p><b>2010 CHEVY EQUINOX</b> LT. BROWN, 105,XXX MILES ..... \$7,750</p> <p><b>2010 CHEVY MALIBU</b> BLACK, VIN# 0424, 151,XXX MILES..... \$5,250</p> <p><b>2010 CHEVY EQUINOX</b> MAROON, VIN# 7190, 151,XXX MILES ..... \$6,500</p> <p><b>2011 CHEVY EQUINOX</b> RED, VIN# 9984, 155,XXX MILES ..... \$5,500</p> <p><b>2012 CHEVY EQUINOX</b> GOLD, VIN# 2931, 140,XXX MILES ..... \$6,200</p> <p><b>2012 CHEVY TRAVERSE</b> WHITE, VIN# 4380, 133,XXX MILES..... \$5,650</p> <p><b>2013 CHEVY CAPTIVA</b> SILVER, VIN# 2898, 63,XXX MILES .....\$10,800</p> <p><b>2013 CHEVY CAPTIVA</b> SILVER, VIN# 9033, 129,XXX MILES ..... \$7,250</p> <p><b>2014 CHEVY SILVERADO</b> BLUE, VIN# 1704, 92,XXX MILES .....\$24,500</p> <p><b>2014 GMC TERRAIN</b> SILVER, VIN# 2439, 191,XXX MILES ..... \$7,850</p> <p><b>2017 CHEVY TRAVERSE</b> BLACK, VIN# 9575, 26,XXX MILES .....\$19,500</p> <p><b>2017 CHEVY EQUINOX</b> GRAY, VIN# 3685, 97,XXX MILES ..... \$9,850</p> <p><b>2019 FORD FIESTA SE</b> ORANGE, VIN# 4318, 6,XXX MILES.....\$13,500</p> <p><b>2018 FORD F150 XLT CREW CAB</b> BLUE, 42,XXX MILES <b>CONSIGNMENT - NO FINANCING.....\$42,500</b></p>	<p style="font-weight: bold; font-size: 1.2em;">WE DO ALIGNMENTS!</p>
--	---

**COMPLETE HERD SELL OUT OF CATTLE:** 40 angus pairs \$1,650 each, 80 Fall bred cows and red angus \$1,475 each, 40 bred heifers calving in September \$1,700 each. 3 bulls for sale. 417-372-3817. Couch.

**LOOKING FOR STORAGE BUILDING:** 12x24 or similar. 417-293-3417. West Plains.

**BRUSHHOG:** 10ft. 3-point Brush Cutter. \$3,200. 573-765-4406. Richland.

**WEATHERED BARN WOOD SIDING:** 10" wide. 573-729-7226. [www.pineridgerustic.com](http://www.pineridgerustic.com) Salem.

**6FT 3-POINT BOX BLADE:** \$650. 573-765-4406. Richland.

**WE BUY AND SELL**  
new and used mobile homes



**(417) 501-1061**

**LOG SIDING:** 2X8 Pine/Western Cedar  
www.pineridgerustic.com 573-729-7226.  
Salem.

**THE ILLUSTRATED HISTORY OF TIPTON, MISSOURI: 1858-2008,** hardback, 528 pages, excellent condition. \$50. 417-532-2045. (Leave message and phone number). Lebanon.

**MISSOURI GUN CO LLC**



Your Reloading Headquarters for Southern Missouri.

W, Th, F: 10am-6pm  
Sat: 10am-2pm  
Sun, M, T: CLOSED

**BUY. SELL. TRADE.**

516 Ozark St., Cabool, Mo. • 417-962-2666

**USED MOBILE HOMES:** Call David at VILLA HOMES IN ROLLA 573-578-8072. Rolla.

**BUYING MOBILE HOMES:** Call David at VILLA HOMES IN ROLLA 573-578-8072. Rolla.

**AVAILABLE STOCK MOBILE HOMES:** Immediately, double wide and single, 3 and 4 bedroom 573-499-9993 columbiadiscountshomes.com



**Wright Spray Foam Insulators, LLC**  
Commercial & Residential  
Call for FREE Estimates!

Ervin Gingerich 417-926-2052  
B. Eli Yoder 417-746-4932



**AGRI-ENTERPRISES**  
For Outstanding Products & Service

**Getting Chores Done**  
**LAND PRIDE**  
*does that.*

**RB15 SERIES** REAR BLADES 17-40 HP 60", 74", 84" Widths

- Cat. 1 Hitch
- 7 Forward angles; 5 Reverse angles
- 12" Offset left or right
- 14" Moldboard height
- 1/4" Moldboard thickness
- Landscape Rake adaptable
- Optional storage stand

1-1/2 Miles South Of Licking, MO On Hwy 63  
**573-674-2203 • 1-800-653-7152**  
www.agri-enterprises.com

**DRAPES AND CURTAIN RODS:** Off-white, various sizes, \$15 for all obo. 636-239-2695. Washington.

**WANTED:** Old Pinball Machines and Juke Boxes. 573-424-7200.

**CUSTOM SAW MILLING:** 417-533-4607. 417-664-1195. Lebanon.

**COOKING FROM QUILT COUNTRY:** Hearty recipes from Amish and Mennonite Kitchens, HB, 202 pages. \$6.50. 417-532-2045. (Leave message and phone number). Lebanon.

**FIREARMS:** Professional Repair, Restorations and Appraisals. Baron's Gunsmithing. 573-363-5801. Camdenton.



**COMMERCIAL ROOFING**

5795 Highway 5  
Hartville, MO 65667

**Roof Restoration Specialists**  
Why replace? Extend the life of your existing roof.

**(417) 241-3653**  
www.dncoatings.com

**OMAR'S LOGGING & DOZING**

⇒ Oak & Walnut  
⇒ Excellent Prices  
Amish Owned & Operated



**LEAVE MESSAGE: 417-741-0440**  
Hartville & Surrounding Areas

**WANTED TO BUY ANTIQUE CARS:** Convertible, Corvettes, unrestored, motors, parts considered. 870-324-1154. Ash Flat.

**WANTED TO BUY DODGE DIESEL TRUCK:** Or Toyota Tacoma. Also, buying antique cars. 870-324-1154. Ash Flat.

**I BUY & SELL GRAIN BINS:** All sizes and conditions. Price depends on size and condition. Please call 573-280-5638. Sunrise Beach.

**STOCK MOBILE HOMES AVAILABLE:** We gottem, single and double, 3 and 4 bedroom! Call Tuffy 573-657-2176. amegamobilehomes.com

**TRUE MODULARS:** 30 to 60 day delivery available, 3 and 4 bedroom 573-657-7040 chateauhomes.net

**KITCHEN FAUCET MOEN:** Single lever, sprayer, new cartridge. \$45 obo. 636-239-2695. Washington.

**FIXED KNOT FENCE**

- Deli Sandwiches
- Homemade Yogurt
- Homemade Bread
- Glass Bottle Milk
- Cheese & Spices
- Bulk Foods
- Hydraulic Hoses
- Electric Fence Supplies
- Stay-Tuff Fence
- Johnson & Ritchie Waterers
- Gates & Panels

**VISIT YOUR ONE STOP SHOP**  
**FARMERS QUIK STOP**  
5 mi. East of Lebanon on Hwy 32 • 417-991-1938



**CLASSIC EDGE**  
TITANIUM HDX

Eliminate high heating bills with Central Boiler's NEW, certified Classic Edge Titanium HDX OUTDOOR WOOD FURNACE. Call today!

**Outdoor Wood Furnace CentralBoiler.com**

Yarbrough Equipment Sales & Services, Inc.  
9776 E. State Hwy OO • Strafford, MO  
417-736-2303 • 1-866-286-6901 • www.yarbq.com



Get more  
done faster.

Z400

Gas powered

48" to 60" cutting widths

 **Kubota** Together we do more.®

Get a great offer on class-leading speed\*, ergonomic comfort and the exclusive Hydro-Gear ZT-3600 transmission.

**\$0** DOWN    **0%** APR    **36** MONTHS

VISIT US TODAY FOR THIS LIMITED-TIME OFFER

## Quarles Supply

3251 S Springfield Ave  
Bolivar, MO 65613  
417-777-2391

[KubotaUSA.com](http://KubotaUSA.com)

\*Claim is based on speeds published on company websites as of 11/08/2021 for the following 52" - 54" zero-turn models: Gravely Pro-Turn ZX, Scag Patriot, Exmark Radius S Series, Toro Titan HD 2000 Series, Hustler Fastrak SDX, John Deere ZTrak. © Kubota Tractor Corporation, 2022. \$0 Down, 0% A.P.R. financing for 36 months on purchases of select new Kubota Z400 Series equipment from participating dealers' in-stock inventory is available to qualified purchasers through Kubota Credit Corporation USA; subject to credit approval. Example: 36 monthly payments of \$27.78 per \$1,000 financed. Some exceptions apply. Offers expire 6/30/22. Terms subject to change. This material is for descriptive purposes only. Kubota disclaims all representations and warranties, express or implied, or any liability from the use of this material. For complete warranty, disclaimer, safety, incentive offer and product information, consult your Dealer or [KubotaUSA.com](http://KubotaUSA.com).

2KBB03852\_Z400\_F1\_3-1\_0215

# Your Plans. Our Products. *Quality Result!*



**LIMITED LIFETIME PAINT WARRANTY**

**Ask About Our Quick Service.**  
Over **20** Colors and Several Styles To Choose!

**24x40x10 • 24x32x10 • 30x40x10 • 30x40x12 • 40x60x12**

All Buildings Quoted Have #2 Lumber And #1 Galvalume Or Limited Lifetime Painted Metal

All Buildings Are Heavy 29 Ga. Metal, Three 2"x6" T&G Splashboards, All Poles 5"x5" Or Larger, CCA Treated, Fully Trimmed With One 3'x6' Walk-Through Door & One Large Sliding Door.

*Plus Tax. Labor & Delivery Available On All Building Packages. Prices may vary due to local code restrictions.*

## Metal Roofs Designed To Look Great On Your Home!

**DELUXE BUILDING PACKAGES AVAILABLE CALL TODAY TO GET YOUR QUOTE!**  
**877-556-8855**



Good quality, quick service

**NEXT BUSINESS DAY SERVICE**  
*Call for details.*

**HEAVY 29 Ga. METAL # 1**  
**Limited LIFETIME WARRANTY**  
**29 Ga. & 26 Ga. Painted**

**CUT TO LENGTH PANELS**  
GALVALUME METAL UNPAINTED  
25 YEAR WARRANTY  
#1 Standard Panels, 29 Ga.