

FREE - TAKE ONE!

Vol. 28 No. 50

MARCH 10, 2022

800-543-8271 • 800-665-8875

T WEEKLY **TRADER** MAGAZINE



Find us on
Facebook

@myweeklytrader
AUCTIONS PG. 9

VISIT OUR NEW WEBSITE! MYWEEKLYTRADER.COM

ED MORSE **COLLISION CENTER**

RollaCollision.com

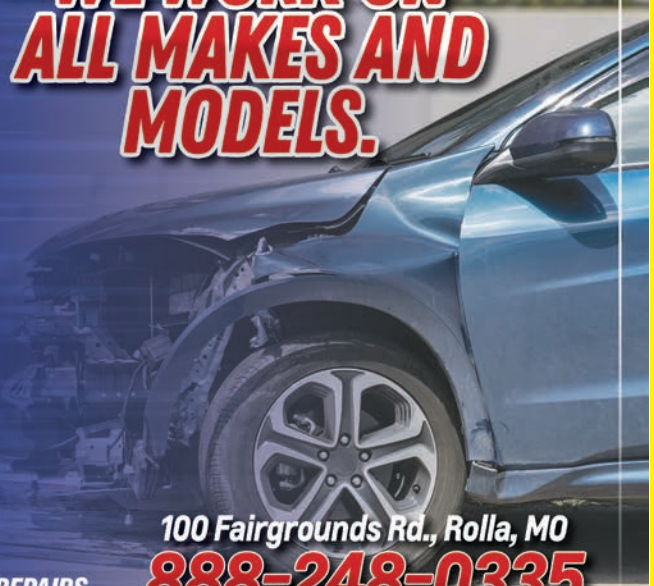
FREE ESTIMATE'S, CAR RENTAL AVAILABLE.
I-CAR, ASE, ALUMINUM WELDING AND
REPAIR CERTIFIED TECHNICIANS.

OUR REPAIR SERVICES

COLLISION REPAIR
PAINT REPAIRS
ALIGNMENTS
DENT REPAIR
WELDING
SCRATCH REMOVAL

WINDSHIELD REPLACEMENT
PAINTLESS DENT REPAIR
FRAME WORK
BUMPER REPAIR
FULL FRAME STRAIGHTENING
ACCIDENT RELATED MECHANICAL REPAIRS

**WE WORK ON
ALL MAKES AND
MODELS.**



100 Fairgrounds Rd., Rolla, MO

888-248-0335

**WE WANT
YOUR TRADE.**

**NEW SHIPMENTS
ARRIVING.**

ED MORSE **CHEVROLET** **BUICK GMC**

ROLLA

FORMERLY FAIRGROUNDS AUTO PLAZA

NEW NAME. SAME TEAM.

100 Fairgrounds Rd., Rolla, MO

573-364-1002

EdMorseChevroletBuickGMCRolla.com

Land

For Sale

Laclede Co., Mo • 80 Acres +/-



\$224,000

- Lebanon School District
- Secluded yet convenient location. 4 miles to I-44 and 10 minutes to town
- Great hunting and building sites
- Only 25 miles to Lake of the Ozark
- Great hunting parcel with abundance of wildlife
- Trail System throughout property
- Nice pond
- Great views
- Large ridges
- Buck torn rubs
- White oaks, Red oaks and Cedar



WHITETAIL PROPERTIES REAL ESTATE

HUNTING | RANCH | FARM | TIMBER

Brian Utecht | 417-766-5595

Brian.Utecht@whitetailproperties.com

WHITETAILPROPERTIES.COM

Missouri's Top Land Specialist in 2014, 2015, 2016, 2017, 2018, 2019 and 2020



THE MOST COMPLETE LINE-UP IN THE INDUSTRY

Cutting widths from 36" to 104"



For Outstanding Products & Service

AGRI-ENTERPRISES

1-1/2 Miles South Of Licking, MO On Hwy 63

573-674-2203 • 1-800-653-7152 • www.agri-enterprises.com

HISTORY OF ST. ALBANS, MO. : H.B. \$20. 417-532-2045. (leave message and phone number). Lebanon.

STOCK MOBILE HOMES AVAILABLE:
We gottem, single and double, 3 and 4 bedroom! Call Tuffy 573-657-2176. amegamobilehomes.com

AVAILABLE STOCK MOBILE HOMES: Immediately, double wide and single, 3 and 4 bedroom 573-499-9993 columbiadiscountohomes.com

WEATHERED BARN WOOD SIDING: 10" wide. 573-729-7226. www.pineridgerustic.com Salem.

LOG SIDING: 2X8 Pine/Western Cedar www.pineridgerustic.com 573-729-7226. Salem.

USED MOBILE HOMES: Call David at VILLA HOMES IN ROLLA 573-578-8072. Rolla.

THE FIELD GUIDE TO WILD FLOWERS, 223 pages, based on Field Book of American Wild Flowers by F. Schuyler Mathews, \$6.50. 417-532-2045. (Leave message and phone number). Lebanon.

BUYING MOBILE HOMES: Call David at VILLA HOMES IN ROLLA 573-578-8072. Rolla.

WANTED TO BUY ANTIQUE CARS: Convertible, Corvettes, unrestored, motors, parts considered. 870-324-1154. Ash Flat.

WANTED TO BUY DODGE DIESEL TRUCK: Or Toyota Tacoma. Also, buying antique cars. 870-324-1154. Ash Flat.

WANTED: Old Pinball Machines and Juke Boxes. 573-424-7200.

TRUE MODULARS: 30 to 60 day delivery available, 3 and 4 bedroom 573-657-7040 chateauhomes.net

VOTED #1 BEST Preowned Car Dealership

TIM'S USED CARS

(573) 341-3828 • 1334 South Bishop (Hwy. 63) • Rolla, MO
Next to Hwy CC • www.tims-used-cars.com

	2018 DODGE CHARGER SXT V-6, Power Equipped, 53,xxx Miles Only \$27,500		2016 RAM 2500 HD TRADESMAN Crew Cab, 4x4, 6.4 V-8, Power Equipped, 77,xxx Miles Only \$34,500
	2017 RAM 1500 4x4, Crew Cab, Sport, 5.7 Hemi, Loaded w/ Options, 124,xxx Miles Only \$32,900		2017 NISSAN SENTRA SR Turbo, 1.6 4 Cyl, Auto, Loaded w/ Options, 67,xxx Miles Only \$18,500

LARGE SELECTION OF CARS, TRUCKS, SUVs & VANS!

DARDEN PROFESSIONAL TIMBER HARVESTING, BUYING STANDING TIMBER: Great prices, improve wildlife habitat and improve forest health. State Certified & Fully Insured! 573-247-4808 or 573-739-1122. Salem.



Wright Spray Foam Insulators, LLC
Commercial & Residential
Call for FREE Estimates!

Ervin Gingerich 417-926-2052
B. Eli Yoder 417-746-4932

FAINTING GOATS: Non-Jumping. Small Size Pet. Variety of colors & patterns. 100% pure bred. Check website www.greenacresvillage.com or text 573-216-7796 for more info. Lake of the Ozarks.

I BUY.....used mobile homes. Call or text 573-338-6250 or email GregS.CH@outlook.com

CUSTOM SAW MILLING: 417-533-4607. 417-664-1195. Lebanon.



Treasures, LLC

- Nostalgic Candies
- Sports & Trading Cards
- Diecasts
- Model Kits
- Coins
- Currency
- Antiques
- Gag Gifts
- All Occasion Cards
- Much More!

1060 Tower Road • Lebanon • 417-532-6666

REGISTERED HEREFORD & ANGUS BULLS: Home raised, Some Show-Me Select Qualified. 573-701-7828. Belgrade.

FIREARMS: Professional Repair, Restorations and Appraisals. Baron's Gunsmithing. 573-363-5801, Camdenton.

WINCHESTER MODEL 94: 30-30, lever action. \$1,200. 417-533-9484. Niangua.

TINY HOMES: We gottem 573-881-3283

POOL TABLES: Installations, moves, recovers, repairs, accessories, etc. 573-646-1700.

QUALITY USED SADDLES WANTED: Will pay cash! George's Tack, Saddles & Feed. 573-346-7866. Camdenton.

AUSTRALIAN SHEPPERD PUPPIES: 573-202-3132.



MISSOURI GUN CO LLC

Your Reloading Headquarters for Southern Missouri.

W, Th, F: 10am-6pm
Sat: 10am-2pm
Sun, M, T: CLOSED

BUY. SELL. TRADE.
516 Ozark St., Cabool, Mo. • 417-962-2666

BIRDS OF MISSOURI FIELD GUIDE: By Stan Tekiela, 182 pages, \$5. 417-532-2045. (Leave message and phone number). Lebanon.

GILSON LAWNMOWER: Triple paint in original color, needs motor and assembly. \$195. 573-364-7465. Rolla.

LIONEL TRAIN SET: Steam engine, tender, caboose and other car, track and transformer. \$195. 573-364-7465. Rolla.

NEW SCHWINN STINGRAY BICYCLE: Monkey Handlebars. Banana seat. Rear Racing Slick. \$145.00. 573-364-7465. Rolla.

OLD HANDMADE FULL-SIZE QUILTS: \$50 each. 417-532-6561. Phillipsburg.



COMMERCIAL ROOFING

5795 Highway 5
Hartville, MO 65667

Roof Restoration Specialists
Why replace? Extend the life of your existing roof.

(417) 241-3653
www.dncoatings.com

TRUCKERS & LOGGERS: Keep your Diesel engines running smooth this winter by adding Diesel plus. Extends the life of injectors and fuel pumps. For more info. Call 417-241-3653.

WANTED: Transmission, automatic, 1957 Chevy car, cash paid. 573-636-8000. Jefferson City.

FIREPLACE LOG GRATE: 28" in width. \$25 obo. 636-239-2695. Washington.

Do You Have a Dusty Gravel Road?
We have your dust control solution!

Make sure to register for our annual

RESIDENTIAL DUST CONTROL PROGRAM!

Call today to reserve your spot:

800-844-2022 or 573-303-7711

Visit us online! www.scotwoodindustries.com/liquid

 Follow us on Facebook for updates! 



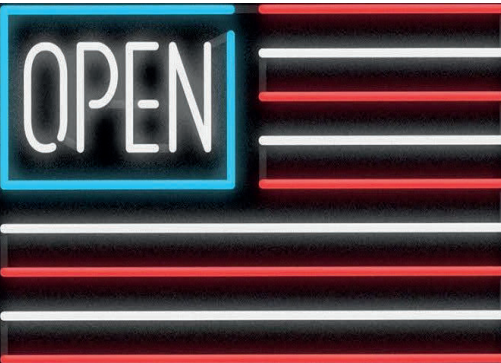
Before treatment



After treatment



SWI
SCOTWOOD INDUSTRIES LLC
Serving Kansas and Missouri for over 40 years!



Sale Ends March 31, 2022
 Seymour, Missouri 417-935-4201

Pole Barns & Post Framed Buildings!

Call for free quote, brochure & color chart.
 Other sizes also available.

23'x32'x10' \$8,400 Material Only \$9,950 Labor Included	23'x40'x10' \$9,650 Material Only \$11,585 Labor Included	30'x40'x10' \$11,690 Material Only \$14,210 Labor Included	40'x60'x12' \$20,488 Material Only \$25,888 Labor Included
--	---	--	--



NOBODY, BUT NOBODY BEATS OUR PRICES!!!

10 ft. Slider • Engineered Trusses 8' O.C. • 2x6 Treated Bottom Wrap • Screws • 2x10 Top Wrap • 2x4 Purlins • Full 29 Gauge Steel • Plus 3 ft. Entry Door with Lock
 OPTIONS: Sidewall Heights on all Buildings 10', 12', 14' & 16'. Overhead Garage Door. Skylights. Insulation. Wainscoting. Insulated Vinyl Windows. Cupolas. Labor Rates Slightly Higher over 50 Miles from Seymour.
 Call for YOUR FREE QUOTE TODAY!!!!

PAINTED WHITE, GREEN OR TAN METAL\$116.20	IN STOCK
10' - \$36.80 12' - \$44.16 16' - \$58.88	
MIX & MATCH METAL\$59.99	
8' - \$15.20 10' - \$19.00 12' - \$22.80	
GALVALUME METAL\$99.99	
10' - \$31.66 12' - \$38.00 16' - \$50.66	
GALVANIZED CORRUGATED METAL SOLD OUT!	
8' - \$9.84 10' - \$12.30 12' - \$14.75 16' - \$19.67	

40yr Painted Metal
 Call

KNOTTY PINE DOORS
 Starting at
\$164.99

LP SMARTSIDE T-5 LAP B GRADE \$43.59SQ

Car Siding!
 1x6 White Pine Siding **79¢** in ft
 1x8 White Pine Siding **\$1.05** in ft
 * 4 Profiles to choose from!
 Broken Bundles Add 10¢ Per Ft.

4x8 Sheeting
 Less than full units Add \$1 per sheet

3/8" Beaded Paneling	\$24.99
7/16" T111 Siding	\$23.99
Paneling	\$\$\$OLD
1/2" Plywood	\$\$\$OLD
3/4" Plywood	\$29.99
3/16 Pegboard	\$12.99

LOTS OF MATERIAL AVAILABLE FOR THOSE IN HOME PROJECTS!

REAL WOOD SIDING

2x6 Log Siding	\$1.96 in ft
1x8 Beveled Cedar	from - 99¢ in ft
T1-11 Siding	from \$28.99

NEW PACKAGE HOMES

Shown with Available Options
 Your choice of either:
 Stock 3/8" T111 Siding w/1x4 Pine Window & Door Trim -OR-
 7/16" OSB & House Wrap ready for other finish options

2x6—16" on center-Exterior Stud Walls
 Residential Roof Trusses-2' on center
 4/12 pitch with 1' over hang
 40 year Painted Metal roofing in 20 Different Colors
 Profile Ridge Vent - Ventilated Ridge Cap
 Vinyl Center Vent Soffit
 Color Matched Metal Fascia & Gable Trim
 2 - 3' 6 Panel Entry Doors
 4 - 3'x4' Vinyl Insulated Windows

ALL FIGURED FOR SUITABLE CUSTOMER SUPPLIED SLAB OR SUB-FLOOR

Price for Basic Materials Package (No Labor at this Time)

20x24(480 sq. ft.)	20x32(640 sq. ft.)	20x40(800 sq. ft.)	28x40(1120 sq. ft.)	28x48(1344 sq. ft.)
\$14,525	\$16,675	\$18,665	\$23,140	\$26,025

DECK PACKAGES

Materials Only

8x8.....\$395.95	10x12.....\$684.99
10x10.....\$569.49	10x16.... \$849.99
12x12.....\$799.99	12x16....\$1069.99

QUAKER Now Stocking Quaker Vinyl Windows

2030 \$ 135.99	3030 \$157.99
3040 \$173.99	3052 \$189.99
3040Twin \$379.99	3052Twin \$419.99

LUCKY DISCOUNT LUMBER
 417-935-4201
 455 State Hwy C • Seymour MO 65746
 www.luckydiscountlumber.com

*Some restrictions apply see store for details. Prices subject to change without notice.

THE HEART OF THE SPRING BOOK. A Bennett Spring Novel by Laura L. Valenti, 161 pages. \$6.50. 417-532-2045. (Leave message and phone number). Lebanon.

NEW POWERFUL MINI CROSSBOW: \$100. 573-327-9068. Desloge.

HORSEMAN MAGAZINES: Some as old as the 1940's. Information and Articles of all kinds about horses and horse related things. \$2.00 each 573-364-1779. Rolla.

2 NEW DVD PLAYERS: \$90 for both. 573-327-9068. Desloge.

RUBBER & LEATHER BOOTS AND HIP WADERS. Men's 11, Women's 7, some insulated. \$15-\$40 obo. 636-239-2695. Washington.

LOOKING TO BUY CUB TRACTOR: 573-759-7268. Dixon.



CENTRAL BOILER
CLASSIC EDGE
TITANIUM HDX

26% Tax Credit on EPA certified Central Boiler Classic Edge HDX models and installation. Call today to learn more!

Outdoor Wood Furnace CentralBoiler.com

The Classic Edge 360, 560 and 760 HDX are U.S. EPA Certified

Yarbrough Equipment Sales & Services, Inc.
9776 E. State Hwy OO • Strafford, MO
417-736-2303 • 1-866-286-6901 • www.yarbeq.com

Your Friend In The Field

Reliable equipment, fair prices and outstanding service you can count on season after season.

SALES • SERVICE • REPAIR



1387 S. BISHOP AVE., ROLLA
573-364-6944 
WWW.STALHMANPOWERSPORTS.COM




KESSLING & SMITH FAMILY HISTORY BOOK OF WEBSTER COUNTY, MO: Also, Rader and Mace families. \$6.50. 417-532-2045. (Please leave message and phone number). Lebanon.

HEARTH CRAFT GLASS BI-FOLD FIRE PLACE DOORS: Antique brass. \$200 obo. 636-239-2695. Washington.

KENMORE 27" BUILT-IN SINGLE OVEN: Self-cleaning, black, \$100 or best offer. 636-239-2695. Washington.

KITCHEN FAUCET MOEN: Single lever, sprayer, new cartridge. \$45 obo. 636-239-2695. Washington.

TEXAS HEELER PUPPIES: 417-664-9837. Phillipsburg.

STORY & PICTURES BOOK OF OLD LINN CREEK: Haha Tonka and Camden County, by T. Victor Jeffries, 72 pages. \$5.00 postpaid. (417)532-2045. (Leave message and phone number). Lebanon.

CERAMIC CANISTER SET: With cutting board that fits in kitchen counter top. Various species of ducks. Set \$40 obo. 636-239-2695. Washington.

Introducing our NEW Collection!

Quality in days, not months and the best prices around!

Let us measure your space for a Free Estimate!

- **Luxury Vinyl Planks • Tile • Cabinets**
- **Granite Countertops • And Much More!**





NEIGHBORHOODS HOME IMPROVEMENT STORE
Where **QUALITY** doesn't cost more!



417-533-5080 • 19850 Houston Road • Lebanon
Mon.-Fri. 8am-5pm • Sat. 8am-3pm
neighborhoods-inc.com 

No Supply Chain Issues!

I BUY & SELL GRAIN BINS: All sizes and conditions. Price depends on size and condition. Please call 573-280-5638. Sunrise Beach.

WANTED: Toyota, older model, 4 cyl, 4-door. 417-322-2727. Lebanon.

RUGER PC9MM CARBINE: With scope, extra mag, loader, bought new. \$650. 417-844-43149. Springfield.

PICKUP TRUCK BEDLINER: Standard size, fits Ford F150-F350. \$40. 314-303-7857. Cedar Hill.

5 BLUE CORNFLOWER CORNINGWARE BAKING BOWLS: With lids, no chips. \$60. 417-532-2344. Lebanon.

LOOKING FOR THE BOOK: Pioneers of the Ozarks by Linnus L Broadfoot. Salem.

Pine Ridge Rustic

Log Home Building Supplies

Services Offered!

- Installation
- Pre-finishing available on interior & exterior
- Dealer for exterior stains

www.pineridgerustic.com

523 CR 2410 • Salem, MO 65560 • Ph: 573-729-7226



- Log Siding
- Beveled Siding
- Car Siding • Red Cedar
- Western Cedar • Pine

Scenic Ridge

GREENHOUSE

- Vegetable Plants
- Hanging Baskets • Perennials

OPEN NOW!

6527 Lake Freddie Rd., Hartville
Mon.-Sat. (No Sunday Calls)

GRIZZLY METAL BANDSAW: New. \$2700. 417-322-0161Lebanon

MOBILE HOME TIRE AND WHEELS: \$50 each. Call Charlie at 573-786-4003. Steelville.

VINTAGE TWIN THRILLER NANCY DREW BOOKS: 17 editions \$50 for all. 417-532-6561. Phillipsburg.

5 MONTH OLD CHIHUAHUA PUPPIES: Male & female, UTD shots, Call for pricing. 417-250-0986 or 417-349-6076. Mtn. Grove.

RUGER PC9MM CARBINE: With scope, extra mag, loader, bought new. \$650. 417-844-4319. Springfield.

TOTE FULL OF AUNT JEMIMA STUFF: \$200 for all. 573-327-9068. Desloge.

BRAND NEW AREA RUGS: Good on ceramic and wood flooring. White fluffy with gray squares. \$125. Call between 8 am-8pm. 417-664-4278. Lebanon.

120^{2ND} & 3RD PERIOD COWS: 3 to 7 year old, 1250 to 1300 lbs, dewormed, vaccinated, pregnancy checked, with trucking available. Will sell any number. 660-619-5190. Otterville.



Meadowview Dutch Market

Call to Order
417-993-3017

Sale Dates March 9th 2022 to
March 15th, 2022 while supplies last!

Discount & Surplus Groceries • Prices Subject to Stock on Hand

DELI SPECIAL

MOZZARELLA CHEESE REG. \$4.25 LB. SALE \$3.75 LB.

SOUTHERN SMOKED HAM REG. \$5.15 LB. SALE \$4.65 LB.

TRY our Fresh Homemade DELI Sandwiches: TURKEY, HAM, ROAST BEEF, ITALIAN, BLT'S, PULLED PORK AND BLT PULLED PORK (MADE YOUR WAY)! COME IN OR CALL to order! ALSO Custom Deli trays! Veggie OR FRESH Meat-N-Cheese!

PORK TENDERLOIN AND FILLETS

SALE!

\$1.99

LB.

- ORIGINAL
- TERIYAKI
- GARLIC & HERB
- GREEK

CEREAL SALE

20% OFF



Local Homegrown

Tomatoes!!!



Sauerkraut

\$1.99

32 OZ.



Milk Chocolate Covered Raisins

15% OFF

(EXCLUDING BULK)

Cold Brew Coffee

99¢

42 OZ.



Avocado Halves

\$1.50

10 CT.



Rolled Oats

GLUTEN FREE

SALE!

59¢

14.1 OZ.



Cheddar Bacon Cheese

\$6.99

5 LB. BLOCK



HORMEL SPIRAL SLICED HAM

\$1.39

LB.



MEADOWVIEW DUTCH MARKET

417-993-3017 Hours: Mon-Thurs 8-5pm
Fri 8-6pm • Sat 8-5pm
23 Miles West on Hwy 64 • Right on T Hwy
9 miles • Left on E Hwy 1 mile on Left



DUTCH COUNTRY STORE, LLC

573-378-4395
Hours: Mon-Thurs 8-5pm
Fri 8-6pm • Sat 8-5pm
5 miles East of Versailles off Hwy C on Kelsay Road

NOW ACCEPTING CREDIT, DEBIT CARDS & EBT



*Say "Goodbye to high material/building prices!!"
We manufacture it all in house.*

Metal Roofing
Building In A Box
-Shop Kits-



Portable Sheds
10x12s from \$2,250
12x16s from \$2,995

**Rent To Own
available**

Overmanmetal.com ★ Buildinginabox.org

40 year warranty metal **SPECIAL:**
****Charcoal- \$2.85 per linear ft./3ft wide/29 Gauge****

Bring in a competitor's quote and if we can't beat it by 10% on the first try, we will buy you lunch at our deli inside the store!



1606 Chicory Rd. Rogersville MO.



417-753-8030

1100 Pace Rd. Pocahontas, AR - 202 S. Prigmor Joplin, MO

R&R AUCTION SERVICE

WOOTEN ESTATE AUCTION SATURDAY MARCH 12TH @ 6PM

R&R Auction House • 1644 South Ash in Buffalo, MO

Cast iron griddle, cast iron skillets, milk bottles, bird feeders, picnic table, misc. chairs and tables, fishing pole rack, glass top table, misc. glassware, shelves, electric lantern, oil lamp, pots and pans, Minolta 35mm camera multiple lens, granite coffee pot, mantel quartz clock, old toys, old wooden boxes, model toy train cars, iron, tin pot with lid, Fluted glass, old jars, zinc lids, couch and love seat, glass top coffee table, pair of glass top end tables, insulators, cups and saucers, end table with built in lamp, wingback chair, office chair, health walker, queen size bed, cane bottom chair, quilt rack, dresser with mirror, night stands, Chilton repair manuals, Snap On gauge fuel system, Atlas cooling system pressure tester, Genisys scan system, 2 burner gas stove, micro tect electronic refrigerator, charging scale, break out box, black granite canner pots, Snap On MT1590, Balkamp engine systems analyzer, OTC system 2000, Enhanced Monitor 4000, Hunter G 111 alignment machine, clay targets, Coke collectibles, Lionel train track and transformer, Lionel switcher, Rand 18 speed bike, Big hand crank wrench, small cream can, pressure cookers, hand washing machine, Refrigerant ATC 1100 recovery machine, Ammco brake lathe, garage cabinets, metal gun case, Nappa clocks, metal signs, Yard Machine MTD 42" rider, garden cart, Atlas motor analyzer tune up service, Shenandoah 200 used oil heater, Huffy 10 speed bike, Old whiskey barrel, old hub caps, misc. hand tools, and so much more.



TIRE & BATTERY SERVICE



Watch next weeks Trader for full listing of Wooten Estate Auction to be held March 12th at 6pm in the R&R Auction House.

TERMS: 10% buyers premium. Cash, check, or credit card with proper I.D. nothing removed until settled for A 3% fee will be added to credit card purchases. Not responsible for errors in listing. Any announcement made sale day will take precedence over any printed matter. **Note:** Service will take every precaution to prevent accidents, but will not be responsible should any occur.

GENERAL AUCTIONEERS
Auction & Appraisals
AUCTION R&R SERVICE

For more information contact Professional Auctioneer Russ Weeks at 417-576-7357 or check out www.rrauctionservice.com

Serving this area's auction needs since 1997 with honesty and professionalism.
www.rrauctionservice.com
(417) 576-7357 or (417) 345-4140



NOW TAKING CONSIGNMENTS

Jr's 4th Annual Consignment Auction Saturday, March 19, 2022



Located At: 4875 Highway BB
Hartville, MO 65667



Directions: From Lebanon, MO take Hwy 5 South approx. 30 miles to Hwy Z, left on Z, 2 miles to Hwy E, right on E to Hwy BB, right on BB to auction on left.

Now taking consignments for farm machinery, horses, antiques, guns, tools, and households. Large selection of farm machinery, antiques, and hand tools already consigned. Expecting loads coming from Wisconsin, Iowa, Kansas, Kentucky, and the surrounding areas.



Advertising deadline:
February 26th



To consign items call
Levi Zook
417-741-2070 or
417-741-2312

Commission rates: 20% up to \$100.00
10% from \$101.00 to \$500.00
7% for items over \$500.00
Commission cap of \$300.00 on horses

To consign horses call
Reuben Glick
417-554-3201

Auctioneers
Larry Martin & Loren
Martin



MARTIN AUCTIONS
1-660-337-6471



Auctioneers
Mel Yoder

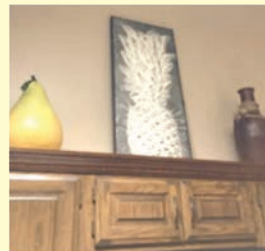
PUBLIC AUCTION

SATURDAY, MARCH 12 @ 10:00 A.M.

Directions: SALEM, MO - old Cash & Carry Building (Hwy. 32 East) (Left of Salem Bowling Center, behind China King.) Watch for signs.

GUNS - HOUSEHOLD - TOOLS • LAWN - MISC. ITEMS

- | | | |
|--|--|---|
| New Henry Rifle
in Box | Totes | Hoist |
| 2 Sewing
Machines, 1 in
Cabinet | Holiday Table
Settings | 4 Trailer Tongue
Wheels |
| Several Lots of
Showroom
Decorations | Fenton Bells | Jack Stands |
| JC Higgins 22
Auto Model 25 | Old Tins | Trailer Straps |
| Marlin Goose Gun
Model 55, 12 | Cookware | 3, 8hp Snapper
Riders, Rear
Engine |
| Gauge | Crock Bowls | Ford Cab Lights |
| Old Army Rifle | Oil Lamps | Chains & Boomers |
| Large Cedar Chest | 10-Drawer
Cabinets | 8' Wooden Step
Ladders |
| Wooden Gun
Cabinet | Shelving | 10' Aluminum Ext.
Ladder |
| Nice Camel Back
Trunk | Wingback Chairs | 8050 BTU Window
Air Conditioner
110 |
| Several Lots of
Christmas Items | 15" Wheel Covers | New Manual Tire
Changer |
| Several Christmas
Trees | New Air Wrenches | Chrome Covers |
| | 2 New Angle
Grinders | 22" Weedeater
Push Mower |
| | Lots of Misc. Tools,
Jacks, Lawn
Items | 300 Farm Tank |
| | 1/2 Electric Drill | |
| | New Boxing
Gloves | |
| | 300 Lb. Chain | |



SEVERAL ITEMS NOT LISTED.

See you there! - Tom!

OWNER: SHAW

**ANNOUNCEMENTS AT AUCTION TAKE PRECEDENCE
OVER PRINTED MATTER**

WULFF AUCTION

TERMS: CASH OR
APPROVED CHECK -
I.D. REQUIRED
NOTHING REMOVED
UNTIL SETTLED FOR

LICENSED
APPRAISALS

2334 Highway K, Salem, MO 65560
AUCTIONEERS: Col. Tom Wulff • John Wisdom
Cell: 573-247-3884 • Cell: 573-247-9563



RAIN OR SHINE
OWNER & AUCTION
PERSONNEL NOT
RESPONSIBLE FOR
ACCIDENTS AT SALE SITE

Clerk: Tracy Strange Home: 573-729-8476 Cashier: Nancy Inman
See Wulff Auctions at www.thesalemnews.com/auctions

FORK LIFT - TRUCK BEDS - TOOLS - TRAILER PARTS - MISC AUCTION

SATURDAY MARCH 12th, 2022 • 10:00 AM

LOCATED: 10000 HWY 63, LICKING MO

1421 US 160 NIXA MO: FROM HWY 160 (MASSEY BLVD) & MT VERNON ST NIXA GO NORTH 1.5 MILES ON MASSEY BLVD, TURN WEST ON TRACKER RD GO TO 1ST DRIVE TURN NORTH BEHIND BIG O TIRES TO AUCTION ON RIGHT. FOLLOW SALE SIGNS.

FOR PICTURES SEE WEBSITE OR AUCTION ZIP.COM

FORK LIFT-TRUCK BEDS-MOWER

KOMATSU FORK LIFT SIDE SHIFT, LP—SHORT BED SINGLE WHEEL FLATBED DELETE FROM 2016 DODGE—READING SERVICE BODY BED FROM 60 CA CABIN CHASSIS—CABIN CHASSIS FLATBED 60 CA—DISPLAY TRAILER 14' NO TITLE—BOX TRUCK ALUM LOADING RAMP—ALUM ATV LOADING RAMP--POULAN PRO 19 HP BRIGGS & STRATTON 42" RIDING MOWER

TOOLS

LINCOLN ELECT 255 POWER MEG WELDER—WEAVER TIRE MACHINE, 1 YR OLD—PARTS WASHER—HOMAK 20 DRAWER STACK TOOL BOX—CRAFTSMAN 16 DRAWER 2 PC TOOL BOX—CHOP SAW TABLE—ROLLER W/STAND—2 TON ROLLERS—(5) 1 TON ELECT CHAIN HOIST—1 1/2 TON HOIST—AC DELCO 10 TON FLOOR JACK—AC DELCO 6 TON FLOOR JACK—BOLT BIN—MISC MILWAUKEE DRILLS—(2) 8' STEP LADDERS—(2) TIRE MACHINES, AIR 110 VOLT—ESAB MIG MASTER WIRE FEED WELDER, 250 AMP—ESAB WIRE FEED WELDER 215 AMP—BANDING MACHINE—MISC WIRING, ELECTRICAL CONNECTIONS—SOCKETS—WIRING CART—STEEL SHOP TABLE ON WHEELS—PORTER CABLE CHOP SAW—7 1/2 HP 80 GAL 2 STAGE AIR COMPRESSOR—DELTA 16 1/2" DRILL PRESS—CENTRAL MACHINERY 8" BENCH GRINDER—SAW HORSES—4 WHEEL DOLLY—MILWAUKEE SAWZALL—MILLER THUNDERBOLT AC/DC WELDER—IMPACTS, GRINDERS, MISC AIR TOOLS—4 WHEEL WAGON

NEW TRAILER PARTS

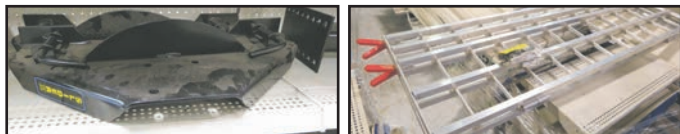
ASSORTMENT OF 4'-7' TRAILER GATES—MISC NEW 3500 LB-10,000 LB AXLES—DISC BRAKES—CALIPERS, HUBS—(2) 8, 6 & 5 LUG MAG STAR WHEELS—(3) BLACK & CHROME 15" WHEELS 5 ON 5—4 SETS 5 ON 4 1/2 CHROME WHEELS—(8) 13" SILVER MOD WHEELS 5 ON 4 1/2—(5) 13" WHITE MOD WHEELS 5 ON 4 1/2—(3) 12" WHITE SPOKE WHEELS 5 LUG—(2) 12" SILVER MOD WHEELS 5 LUG—SET TRIPLE AXLE FENDERS—AXLE TUBES IN A BOX 2000 LB-7000 LB—FIFTH WHEEL HIJACKER SLIDER HITCH—ALUM HORSE TRAILER DIVIDER—MISC CARGO & HORSE TRAILER WINDOWS—MISC CARGO DOORS—MISC DUMP PARTS—BOAT FENDERS—TOOL BOX FOR FLAT BED—MISC RECEIVER HITCHES

LIGHTED SIGNS-MISC

2 LIGHTED SIGNS FOR BUILDING—SEVERAL FEET OF PARTS SHELVING—4 WOODEN SHELVING—SEVERAL FILING CABINETS—METAL DESKS—WOODEN DESK—VENDING MACHINE HOLDS SODA & CHIPS—PACKING BOXES—MISC OFFICE SUPPLIES & PRINTERS—L SHAPE DESK W/CREDENZA—MISC CHAIRS—LEATHER SOFA—FRIGIDAIRE S/S STAINLESS FRIDGE W/ICE/WATER IN DOOR—MICROWAVE—TOWEL DISPENSERS & TOWELS—8 PHONE OFFICE SYSTEM—CHRISTMAS TREE & DECOR

OWNER: SANCREST TRAILERS-PHIL RAUCH

REASON FOR AUCTION: SANCREST TRAILERS WILL BE SELLING ACQUIRED EQUIPMENT & TOOLS FROM SUTTER TRAILER



ANNOUNCEMENTS MADE ON SALE DAY WILL TAKE PRECEDENCE OVER ANY OTHER PRINTED MATERIALS. NOT RESPONSIBLE FOR ACCIDENTS OR LOSS OF ARTICLES ON OR NEAR SALE SITE.

MELTON AUCTION & REALTY CO LLC



www.MeltonAuction.com | Roger@MeltonAuction.com
Roger Melton | Nixa, Mo | 417-830-0153 or 417-725-1801
Brad Cole | Nixa, Mo | 417-840-2950
Tanner Foster | Galena, Mo | 417-840-5519

809276

PUBLIC AUCTION

Sunday March 13, 2022 9:00AM

940 S Iron Mountain Rd Fordland, MO 65652

Directions: From Springfield Take Hwy 60 East 18 Miles To Iron Mtn. Rd. Turn North Across Hwy 60 Onto Iron Mtn. Rd. To Auction. Watch For Signs.



Vehicles & Equipment- 12:00

2015 Bobcat S630 Skidsteer 2 Spd w/ 74" Bucket & 1061Hrs * Kubota L3830 Dsl 4x4 Tractor w/ Canopy, Shuttle Shift, Front Ldr w/ QA Bucket, Bale Spike & 1086hrs * 2018 LS XU6168 4x4 Tractor w/ Ldr- 1 Owner * International 464 Gas Tractor w/ 548hrs- Excellent Condition * MF 231 Dsl Tractor w/ 187hrs- Excellent Condition * Mahindra Max 25HST w/ Ldr, Belly Mower & 160hrs * Yanmar F18D Dsl 4x4 Tractor * 2006 KW T600 Tri-Axle Dump Truck w/ 16' Demolition Bed, Twin Turbos, Cat Engine * 2004 Freightliner FL70 Cat 3126D, w/ PTO Ran Air Comp & Generator w/ 110 & 240V Outlet Inbox & 112k Miles * 2008 Ford F350 Lariat Dsl Crew Cab w/ 190k * 2004 Ford F350 Power Stroke 6.0 Single Cab Utility Truck * 1987 Chevy C20 4spd 350 Dually Flatbed w/ 112k Miles * 2018 Starlite 20 Gooseneck Trailer w/ Double Axle, 2' Dovetail & Ramps * 20ton Log Splitter On Trailer * 1ton Flatbed * 7' Bushog Blade * Rhino 3pt 5' Bushog * Bobcat 30C Auger * 7' Box Blade * HD QA 74" Grapple Bucket * HD QA Brushhog * 3pt 7' Bushog * 6' 3pt Rock Rake * QA 80" Tiller * QA Forks * 3pt 4' Blade * Horse Drawn Surrey w/ Brakes * Truck Tool Box & Fuel Tank * 4 Wheel Wagon Frame * 2- Go Carts

Tools, Lawn & Garden

Platinum Elite Artesian Spa Jacuzzi- Like New * Shop Vacs * Poulan 18hp 42" Riding Mower * Patio Tables & Chairs * Levels * DR Profession 36" Walk Along Brush Mower * ATV Ramps * Alum Wheelchair Reese Hitch * 24' Contractors Ladder * Assorted Hand Tools * Lawn Mower Ramps * 6" Joiner Planer

Knives, Ammo & Misc

2- Browning Safes * John Deere Safe * 2- First Alert Safes * Damon Howett Recurb Bow * Carbine Express Crossbow Knives- Benchmade 3150 & 3800 Pocket Knives, Benchmade Model 556, Case XX Mako, Assorted Pocket Knives, Etc Holsters * Duck Calls * Metal Gun Cabinet * Gold Jewelry * Gun Parts, Cylinders, Slings, Scopes, Mags, Red Dots & Cases * Large Collection Of Ammo- 9mm, 32, 327, 22, 222, 17, 44, 223, 45, 357, 38, 257, 12ga, 308, 20ga, 30-06, 16ga, 28ga, 410 * Sterling Silver Flatware Safe * Deer & Fish Mounts

Furniture & Appliances- 10:30

8- True Coolers (3 Large & 5 Small) * Leather Couch * End Tables * Whirlpool Duet Front Loader Washer & Dryer w/ Steam * Whirlpool Washer & Dryer * Coffee Tables * Rolltop Desk * Dropleaf Table & 4 Chairs * Farm Table w/ 2 Chairs & Bench * Antique Postal Sorting Cabinet * Oak Highboy

Dresser * Sofas * Dressers * Chest Of Drawers * 4 Door Kitchen Cupboard * Desks * Primitive Possum Belly Cabinet * Oak Barley Twist Side Board * Barley Twist Dinette Table * Oak Sideboard * Loveseats * Beds * Arlington Treadle Sewing Machine * Victorian Quilt Rack * 2- 6' Beveled Glass Curio Cabinets * Leather Lift Chair * Heavy Wicker Couch * Loveseat & Tables * Bookcases * Electric Leather Recliner * Wood File Cabinet * 4 Poster Bed w/ Philadelphia Highboy Dresser * Red Leather Couch w/ Electric Incliners & Matching Recliner * **Lots Of Exceptionally Nice Furniture!**

Antiques, Collectibles & Household

Vintage 2 Person Schwinn Bike * 2pc Leaded Glass * Saddles * Lots Of Native American Collectibles * Bronze Remington Statue * Vintage US Stamp Vending Machine * Saddles * Lanterns * Antique Handmade Quilts * Copper Pots * Pictures & Frames * San Franciscan Apple Stoneware * Antique Dough Bowl * Books * Cranberry Hobnail Baskets * Antique Stained Glass Windows * Carousel & Rocking Horse Statues * Cast Iron Horse & Carriage Glassware- Jadeite, Pink & Green Depression, Shawnee, Hobnail Opalescent, Etc * Stone Horses * Breyer Horses * Wooden Breyer Stable * DVD's * Westerns * Kitchen Utensils & Cookware * Graniteware * Lamps * Cast Iron Skillets & Cookware * Mixing Bowls * Games * Canisters * Wheelchair * Electric Scooters * Handicap Equipment * Mirrors

140+ Firearms-1:30PM

Thompson Model 27A1 45 auto * Radical Firearms Model RF15 * Ruger LCPII 380auto * S&W 637-2 * Colt SA Army 45 Long Colt * US Smith Corona Model 03-A3 * Win Centennial 66 * Sentinel 22 * S&W Model 61-2 22 * Ruger 22-45 Light 22LR * Win Model 70 * Browning BAR 243 * Marlin Model 39A * 3- Browning Auto 5 * Nickel Plated Browning High Power Commemorative * Colt 1908 Vest Pocket 25 * Colt Police Positive * Beretta Model 950BS 25 * High Standard Derringer 22mag * Beretta Model 21A 22LR * Ruger Model SP101 327 Federal * Taurus Model 738 22mag * S&W Model 622 22LR * FIE 410 * High Standard Nato 49er 22 * Ruger New Model Single 6 22 * 3- High Standard Dura-matic 22LR * High Standard Model B 22LR * Sentinel MK IV 22mag * S&W K22 22LR * Taurus 941 22mag * Colt Mustang Pocket Light 380 Auto * Sig P290 9mm * Ruger Red Hawk 44mag 2" Barrel * S&W Model 19-3 357mag * Taurus 17HMR Model 17c * Cobra Model CB380 380Auto * Colt Pocket 25cal * High Standard Derringer 22mag * Beretta 30-32 Tomcat 32auto * Kimber Micro Carry 380auto * Taurus Judge 45 Long Colt 410 * Ruger

SP101 9mm * Browning Challenger III 22LR * Sig Model P238 380 Auto * Ruger SP101 22LR * Kahr P9 9mm * S&W Model 63-4 22LR * Arminius Model HW7 22mag * Sig Model P232 380 Auto * Walther PPKS22 * Keltec Model CP33 22LR * Walther P22 22LR * S&W Model 629-4 44mag w/ Leupold Scope * Glock 19 9mm * S&W Air Weight Model 368-3 38S&W * Sig Model P938-22 22LR * S&W M&P Bodyguard 380auto * S&W Model 6-22 22LR * Ruger LCR 22LR * Keltec PMR30 22win Mag * Rem Pellet Rifle * Ruger LCR 38 Special * Taurus Tracker 22mag * Rossi 410 * Standard Model S333 22mag Thunderstruck * Gamo Pellet Rifle * Kimber Solo 9mm * Crossman Pellet Pistol * Powerline CO2 Pellet * Sentinel MK IV 22mag * Henry US Survival * Win Model 67 22 * Ruger Precision 22 w/ Simmons Scope * S&W MP15-22 22LR * Bushmaster XM15 5.56mm * Marlin Model 336SC 35Rem * Win Model 94 32win Large Loop * Win Ranger 30-30 * Ruger Mini 14 223 * Stevens Crackshot 22LR * Taurus Circuit Judge 45/410 * Ruger 77/17 17HMR * Ruger No. 1 22 Hornet * Rem 572 Fieldmaster 22 * Glenfield Model 60 22 * Ruger Model 96 17HMR * Marlin Model 60W 22LR * Browning Made In Belgium 22SA * Ruger 10-22 22LR * Ruger Carbine 44mag * Rossi Mares Leg 357 * Win Model 1897 12ga * Ithaca Model 37 Featherlight 16ga * Marlin Model 922M 22Mag * Coast To Coast Model- 843205 2.22 * Ruger 10-22 Takedown * Marlin Model 9 9mm * Marlin Model 9 9mm * Ruger Carbine 9mm * H&R Model 760 22 * Rem Sportsman Model 512 22 * Mega 308win w/ Scope * Ithaca Model 37 Featherlight 20ga * Ruger 10-22 22 * Rem Model 870mag 12ga * 12ga Single Shot * Rem 1100 28ga * Stevens Model 940B 12ga * Rem SPR100 410 * Marlin 45 Rifle * Marlin Model 9 9mm * Marlin Model 922M 22mag * Magnum Research Model MLR 1722 22LR w/ Scope * Tradewinds Model H150 12ga * Ruger 10-22 22mag * Ithaca Model 37 Featherlight 12ga * Win Model 42 410 * Rem Model 1100 20ga Skeet Barrel * Snake Charmer 410 * Browning Sweet 16 Made In Belgium * Stevens Model 311A 16ga * Stevens Model 311C 410 * Stevens Favorite 25 * Rem Model 1100 20ga * Ithaca Featherlight Model 37 20ga * Ithaca Model 500 20ga O/U * Win Model 37A 410 * Marlin Model 70P 22LR w/ Red Case * Rem Model 1148 410 * Stevens Model 512 28ga O/U * Win Model 250 22 * Savage Model 24 Series P 22/410 * Rem Model 1148 20ga * Marlin Model 9 9mm * Marlin Model 45 45auto w/ Scope * Marlin Model 9N 9mm * Keltec Sub 2000 9mm * Walther H&K MP522 * Excel Arms Model MR22 22mag * Black Powder Pistols * RWS Diana Model 460 Pellet Rifle

Auction Conducted by:
Glenworth
 Auction Service & Realty
 Glen Yutzy, Auctioneer/Broker



Member of:
 Licensed in Missouri & Arkansas

Not responsible for accidents. Announcements made day of sale take precedence over any printed matter.
 Terms: CASH or CHECK Visit our website for more information at www.glenworth.com Lunch available

Phone: (417) 767-4345 • Fax: (417) 767-4222

Guns-Coins-Ammo AUCTION

Saturday March 19th at 11:00 am
900 W Washington St STE 260 Marshfield, Mo. 65706
(inside the Axes & Os building) Doors open a 9am

Directions: From Exit 100 on I-44 follow east Hwy 38 to 3rd stoplight at Youngs Shopping Center turn into shopping center lot to Axes & Os. Watch for signs.

Selling three private collections of long guns, some with hex barrels, pistols, and more.

- 5 shot 32 cal
- Model RG14 22 CAL
- Model RG145 22 CAL
- Norinco model 213 9x19mm
- Hi Point model C9 9MM
- H&R 922
- Hi Point 40 s&w x770991
- Remington model 742 scope 30.6
- Remington model 7400 scope 2.70 cal
- Fab Nat D'Armes 7mm scope
- Flaig Ace 30.06
- Browning 223 wssm only
- 5 boxes of 223 Ammo
- 8 boxes 223 WSSM
- 12 BOXES 7.62 CAL
- 5 BOXES 30-06
- 3 BOXES 7MM
- 3 BOXES 357
- Box of misc Ammo
- Box of 300 AAC Blackout
- Alcohol Distiller Home Kit Still
- Browning Belgium Made 16GA
- Browning Belgium Made -16GA
- Howa model 1500 308 cal
- Winchester Super XL 12GA
- Ruger M77 25.06
- Ithica 12GA DBL
- Stevens Little Scout single shot 22
- Universal M1 Carbine 30cal
- Remington odel 597 22 cal
- Marlin Model 25 22 mag
- Ruger M77 270 cal
- Winchester Super XL model 12 GA
- JC Higgins Model 583 20 GA
- Ruger Mini 14 223 cal
- Ruger 77/17 17 cal
- Remington 870 12 GA
- Stevens 12GA Single shot
- Norinco SKS 7.62 cal
- Ruger model single six
- Auto-ordnance 45 cal action
- Smith & Wesson 38 special
- JP Saur & Sohn 357 mag
- Colt Lawman MKIII 357 mag
- Ruger Super Blackhawk
- Winchester Buffalo Bill commemorative 30-30 (never fired)
- 66 Cennentinal Winchester 30-30 HCX (never fired)
- Winchester Theodore Roosevelt Commerative Mod 94 30-30 Hex (never fired)
- Winchester Theodore Roosevelt Commerative Mod 94 30-30 rifle
- Stoeger Condor I 20GA
- Mossberg 12 ga over and under TR
- 17 HMR 6 boxes of ammo
- 17HM2 7 boxes of ammo
- 8 boxes 223 ammo
- 410 & 16ga ammo
- 3 boxes 40 cal ammo
- Stevens Sgl shot 20 ga (Brand New)
- Remington 870 12ga (Brand New)
- Kimber 223 Mod DR 200
- Ruger Super Blackhawk 44mag
- Ruger Super Blackhawk 44mag
- Ruger Balckhawk 41 mag
- Ruger Single Six 22cal
- Henry modl 001NRA22
- Henry Pump octagon barrrell Model o03t22
- Uberti 66 Yellow boy 45 Colt
- Ruger Police Service 6 357
- Ruger Black harw 357
- Smith & Wesson model 629-1 44 mag
- Ruger Sinle nine 22 mag
- Green & Brown Gun Case
- Brown & Black Gun Case
- Black Hard Case
- 2 pistol cases and gun cleaning kit
- Box of holsters
- 308 Reloading kit
- Box Misc.
- Buschnell Scope
- Buschnell Scope
- Buschnell Scope
- Buschnell Scope
- Scope Mounts
- Misc. clips
- Taurus the Judge 45LC/410GA
- Taurus Circuit Judge
- Remington 870 12 ga
- Remington 11-87 12ga
- Ithica Featherlite 12ga
- Remington Mod 1100 12ga
- Mossburg 12 ga pump (never fired)
- Browning 12 ga auto
- Mossberg 835 12ga pump
- Violin case -guns etc (Display only)
- Pamona SKS 7.62CAL
- Ruger Mini 14 223 cal
- Ruger mini 223 cal
- Remington Woodmaster 743 30-06
- Marlin mod 9821 22mag
- Marlin 17vs 17cal
- Marlin 917 17 cal
- Winchester Commemorative Golden Spike 30-30
- Winchester Commemorative Canadian Continental 30-30
- Winchester Canadian Continental 30-30
- Winchester Buffalo Bill commemorative 30-30
- Rohn 22 cal pistol
- Heritage Rough rider 22 cal
- Davis Ind Berringer 32 cal
- Smith & Wesson Air weight 38 cal
- Colt challenger 22 auto
- Cobra 32 cal
- Kimber Ultra carry 45 cal
- Ruger P95 9MM
- Winchester 9422 22cal
- Winchester 94AE 30-30
- Henry 4570
- Henry 357 cal
- Mossberg 702 Plankster 2 2 cal
- JC Higgins 22cal Bolt Action
- Savage 29A 22 Cal Pump
- Remington 870 20ga Pump
- 500 Rounds 7.62 Ammo
- 500 Rounds 7.62 Ammo
- 120 Rounds 7.62 Ammo
- Diamondback 300 blackout
- No 4 MK1 England 303
- No 4 MK1 England 303
- Russian 7.62 Mod 91/30
- RockRiver 9mm
- Intratec 9mm Lager
- Masterpiece 45ACP
- Sears 22 Model 25
- Marlin 6087 22 LR
- Glenfield 60 22LR
- Remington Speedmaster 552 22 S-L-LR
- Misc Ammo
- Misc Ammo
- Misc Ammo
- Henry Repeating Arms 243 W
- Heritage MFG Rough Rider 22 cal
- Ruger AR-556 5.56CAL
- DPMS CAL 5.56
- Tasco World Class 3x9 Scope
- Weaver 3x9x4 Scope
- Burris 3x9xfullfied 2 Scope
- Leopold 6x18 Scope
- DOA 600 3x9 Scope
- Remington 300 win Ammo
- Remington 25-06 Ammo
- Remington 17 REM Ammo
- Homady 204 Ruger Ammo
- 7mm 3 boxes of Ammo
- 264 Win Mag Ammo
- 257 WBY Mag Ammo
- Revelation 20 ga
- Browning Sweet 16
- Remington 1100 12 ga
- Remington 1100 30 ga
- Remington 1100 12ga
- Remington 788 243 Win
- Stevens 200 220 REM
- Savage 25 204 Ruger
- Kimber 84m 6.5 Creedmore
- Kimber 84 m 7mm-08
- Remington 700 264 win
- Remington 721 246 Win
- Remington 742 30-06 woodmaster
- Remington 512 Sportsmaster
- Remington 700 300-win mag
- Remington 700 25-06
- Remington 17 REM
- Remington 7mm Rem Mag
- Remington 257 WBY Mag
- 45 Mint commmerative dollars 90% silver
- Silver dimes Pre 1964- 13 count
- Silver quarters Pre 1964 -12 count
- 1 oz silver nickels-6 count
- Silver Morgan Dollars-5 count
- Liberty Silver dollars- 5 count
- Uncirculated coin sets 5-count
- Silver proof sets -2 count
- Misc. silver quarters -10 count
- Misc 90% Half dollars 4 count
- Kennedy Half dollars 16 count
- Kennedy 40% half dollars- 6 ocunt
- Silver dimes - 6 count
- Eisenhower Dollars - 2 count
- Silver 40% Eisenhower dollars -6 count
- Susan B Anthony Dollars- 6count
- Bicentennial Quarters - 7 count

Selling three local private collections of guns. This is not an open consignment auction.



Real Estate & Auction Services

Hoover Case - Auctioneer • MJ Johnson - sale manager 417.838.0291
 Have questions, Let us know • 417.859.3204 or 417.844.6020
 info@caseauction.com • auctionzip.com ID#24071 • www.caseauction.com

Terms: Announcements made sale day take precedence over all printed material.
 Neither Case Auction or property owner guarantees the absolute accuracy of supplied information.

GO TO THE AUCTION • GO TO THE AUCTION • GO TO THE AUCTION • GO TO THE AUCTION • GO TO THE AUCTION •

PUBLIC AUCTION

SATURDAY, MARCH 12, 2022 • Starting at: 9:00 a.m.

LOCATION: 24328 S HWY. 133 RICHLAND, MO 65556

Directions: From I-44 take Exit 145, turn North toward Richland. Travel about 3 miles to property on the right.

REAL ESTATE: At 12:30 p.m we will sell 4.48 acres m/l with a 2,400 sq. ft. home that has two additions. There are two large bedrooms, one full and one half bath. There are two bonus rooms. MBR has a walk in closet, BR 2 has two smaller closets. Floors are carpet and vinyl. Ceiling fans in most rooms. Bonus room 2 contains a tornado/storm shelter. Property has a 2 bay shop building with 220V electric, concrete floor, and one horse stall. Back yard has above ground pool w/Deck. 2 small outbuildings. Property is fenced. **REAL ESTATE TERMS:** Winning bidder will complete a purchase agreement and provide \$1,500.00 non-refundable deposit. Property is sold "AS IS/WHERE IS." Buyer must satisfy themselves as to property boundaries. **Sale of real estate is ordered by and subject to the approval of the Probate Court.** (In the event the sale is NOT approved, deposit will be returned.)

HOUSEHOLD

- Whirlpool Duet Steam Washer on Riser
- Samsung Multisteam Dryer
- Samsung Flat Screen TV
- Dyson Vacuum
- Breyer "Pine Hollow Stables" Deluxe Play Set NIB
- Coffee Table w/Storage & Lift
- Old Buffet
- Small Kitchen Table w/2 chairs
- Ninja Food Processor
- Flip Type Waffle Iron
- 2 Wooden TV Trays
- Small Occasional Table
- Bar Stool
- TV Stand w/baskets
- Corner Curio/Lighted
- Lg. Curio/Sliding door/lighted/5 glass shelves
- Oversized Black Recliner
- Beige Lift Chair/Recliner
- Walker w/Brakes/Storage
- Pair End Tables
- Book Shelves
- "Best Perfect Mason"

- Crock w/ flowers (repro)
- 2 Gal. Ball Canning Jar w/ Wine Corks (Bail missing)
- Lg. Round Sunburst type Mirror
- Small Kitchen Cabinet
- Small Microwave
- 6 pc. Set Metal Bowls
- Pair Lg. Beer Steins
- 2 Collectible Barbies NIB
- 4 Slice Toaster
- Abingdon Vase Marked USA 125
- Laundry Sorter
- Craft Caddy on Wheels
- Lot Crafting Items incl. yarn, ribbon, wreath making fabric, Polyfill & much more
- Cosco Step Ladder
- Set White Bookshelves
- Sewing Caddy
- Room Size Rug
- Office Chair
- Small Vanity/Secretary Desk
- Snoopy Slipper Socks (new)
- Wooden Rocker w/ Cowboy & Horse Carving

- Books & Games in large tote
- Afghans, Quilts, Throws
- 2 NIB Twin Sheet Sets
- 1 NIB Sheet Set Unknown Size
- 2 Queen Bed Frames (mattresses are stained)
- 2 Four Drawer Chests
- Wooden Entertainment Center
- Dell Printer/Scanner/Fax (C1765nfw)
- Portable Heater/Fireplace
- Night Stand
- Dresser (no mirror)
- White Bathroom Cabinet
- Small White Vanity
- Old Brown Wardrobe (rough)
- Bissell Upright Vacuum
- Shop & Outdoor
- 6 Gun Cabinet
- T Post Puller
- Garage Stand Fan
- Rolling Tool Stools
- Chain Link Fence Posts (2)
- 2 8' Folding Tables
- Lg. Animal Trap
- 8' Alum. Ladder

- T Square
- Push Brooms
- Handle Tools
- Bench Vise
- Bench Grinder
- Screw & Bolt Organizers
- Lg. Dog Crate
- Ping Pong Table
- Paper Shredder
- File Cabinet (4drawer)
- Rustic Wooden Box
- Idylis Portable A/C Unit
- 10 gal. Aquarium
- Coleman Camp Cot
- 4 h. Shop Vac QSP
- Pet Carriers
- Lg. Double Bookshelf
- Craftsman Tool Boxes, Rolling, Stacking, Wall Hung
- Popular Mechanics Tool Chest
- Hitachi C10FCH Laser Miter Saw
- Creeper
- 24" Base Cabinet NIB
- 6' Folding Table
- Panels for stock pen
- Many more items too numerous to mention.**

Seller: Barbara Chaffee by Loretta Rouse • Pulaski County Public Administrator-Guardian & Conservator

"ANNOUNCEMENTS DAY OF AUCTION TAKE PRECEDENCE OVER ANY OTHER ADVERTISING"
3% Convenience Fee added to all credit/debit card transactions

WARDEN AUCTION & MORE

(573) 336-2367 or (573) 528-0729

Ed Warden – Licensed Auctioneer/
Real Estate Broker

www.wardenauction.com

TERMS

- Cash, Credit, Debit or Approved Check
- ID Required for Bid Number



TERMS

- Not Responsible For Accidents or Losses
- Nothing Removed Until Settled For



GO TO THE AUCTION • GO TO THE AUCTION • GO TO THE AUCTION • GO TO THE AUCTION • GO TO THE AUCTION •

BUILDING SUPPLY AUCTION



SATURDAY, MARCH 12TH • 9:30 AM

Baxter Springs, Kansas

2404 Cleveland • Baxter Springs, KS • Corner of 24th & Cleveland, 3 blocks E of 69A on 24th St

SALE HELD INSIDE REGARDLESS OF WEATHER

◇ **DIMENSIONAL LUMBER** - 2x4x104 5/8's (precut); 2x6x8's; 2x8x12's; 2x10x12's & 14's; 1x4x12
 ◇ **PINE** - 1x6 & 1x8 V-Match T&G. wire brush 1x6 T&G - in unfinished and pre-primed,
 ◇ **SOLAR PANELS**
 ◇ **INSULATION SHEATHING** with Shiplap Edge - 1/2, 3/4 & 1" thickness in 4'x8'; 4'x9' & 4'x10' sheets - foil on one side/tar paper on the other
 ◇ **ZIP BOARD** - ~140 pcs
 ◇ **BACKER BOARD**
 ◇ **CULTURED STONE** - good selection of colors
 ◇ **DECKING** - composite - great selection of colors, several small lots available as well, some colors include trim pieces available
 ◇ **COMPOSITE DECKING TILES** - Interlocking 12x12 tiles - Redwood color - great for patios, verandas and virtually any level concrete or gravel surface
 ◇ **OSB** - 3/4" T&G
 ◇ **PLYWOOD** - 1/2" - fire retardant
 ◇ **Pine** 1x's
 ◇ **PARALLAMs** - very limited selection (more details will be added closer to the auction)
 ◇ **4x4 POSTS**
 ◇ **BRICK and CEMENT BLOCKS** - blocks are 12"
 ◇ **VINYL SIDING** - CertainTeed Brand - available in several colors -
 ◇ **FIBER CEMENT SIDING**
 ◇ **HARDIE BATTON STRIPS AND TRIM BOARDS**
 ◇ **PREFINISHED FIBER CEMENT SHAKE SIDING**
 ◇ **ICE AND WATER SHIELD**
 ◇ **CLAY ROOF TILES**
 ◇ **HOUSE WRAP**
 ◇ **BARN WOOD DOORS** - real wood doors
 ◇ **PEX TUBING 1/2"** - red and blue - 500' rolls
 ◇ **INSULATION** -R11, R13, R15 and R19 bats; 5' and 6' wide rolls of r10 - r11.9 - r13 insulation
 ◇ **PULLDOWN KITCHEN FAUCETS**
 ◇ **NEW DELTA, MOEN, and HOME IMPRESSIONS FAUCETS:** Vanity and kitchen

(NIB) - large selection to choose from
 ◇ **APPLIANCES:** NEW as well as Shelf Pulls and Scratch and Dent
 ◇ **WIRE CLOSET SHELVING:** 12" and 16"x12' wire closet shelving.
 ◇ **NEW LARGE SELECTION OF LIGHTING:** huge variety of really nice lighting fixtures - including some high end lighting retailing as much as \$3000
 ◇ **VINYL WINDOWS:** New -JELDWEN -new construction - single hung - vinyl insulated windows
 ◇ **KITCHEN CABINETS:** Multiple sets of cabinets - option of stained and painted including: Farmhouse Brown, AND Shaker Style in Dark Gray, Light Gray, and White - all wood - prefinished cabinets. Straight and L shaped sets with some also including pantry. Some sets include soft close doors and dovetailed drawers.
 ◇ **VANITIES** - Nice selection of vanities including matching vanities for the Farmhouse Brown, Dark Gray, Light Gray, and White cabinets; as well as new inventory of high-end vanities - some include soft close drawers and doors
 ◇ **PORCELAIN AND CERAMIC TILE: OVER 20,000 SQ FT,** including new inventory, with great selection of sizes and colors of tile to choose from
 ◇ **MOSAIC TILE:** Fantastic selection of glass - TRAVERTINE - marble - tile - stone including Subway Tile.
 ◇ **WOOD LOOK TILE:** Great selection of styles and colors in various lengths and widths
 ◇ **Hardwood Flooring including 7" WIDE PLANK WHITE OAK UNFINISHED OAK FLOORING:** Dual faced engineered back flooring - T&G - beveled edge
 ◇ **PREFINISHED HARDWOOD FLOORING:** 3/4" solid prefinished hardwood floor - including hickory, oak, etc.
 ◇ **7" wide 1/2" thick PREFINISHED PLANK WOOD FLOORING** - hand scraped, wire brush
 ◇ **SNAP AND LOCK LAMINATE** - small lots - ~550 sq ft & less

◇ **LVT:** over 20,000 SQ FT of luxury vinyl tile - wood plank - snap lock and glue down - great selection of colors
 ◇ **LVT ACRYLIC ADHESIVE** - VMI 91 covers 1,200 sq ft per bucket
 ◇ **EXTERIOR DOOR UNITS:** large selection - Singles - doubles - with and without glass
 ◇ **INTERIOR DOOR UNITS AND SLABS**
 ◇ **TRIM: BASE - CASING - CROWN:** Pre-Primed - various widths & lengths, finger joint PINE, OAK; AS WELL AS OAK quarter round, corners, chair rail, cove, base shoe, and door stop.
 ◇ **STAIRCASE HANDRAILS** - in Oak and Poplar
 ◇ **ENTRY - PASSAGE - PRIVACY DOOR KNOBS AND LOCKS**
 ◇ **QUARTZ:** Maple White in various sizes - countertops - island panels, with and w/o sink cutouts. 3cm quartz
 ◇ **VANITY TOPS** available in **QUARTZ, MARBLE and TRAVERTINE** - includes undermount, overmount, and vessel style tops (some GLASS)
 ◇ **GRANITE** - new selection in various colors
 ◇ **KITCHEN SINKS:** including Farmhouse Sinks in Fire Clay and SS - Composite - SS - varying styles and colors
 ◇ **BATHTUBS** - including standard, Free Standing and Soaking
 ◇ **CEILING FANS** - nice selection
 ◇ **TOILETS**
 ◇ **PEDESTAL SINKS**
 ◇ **TOWEL BARS and RINGS, TOILET PAPER HOLDERS, ROBE HOOKS, TOOTHBRUSH HOLDERS**
 ◇ **FOLDING ATTIC LADDER**

Scheduled to Arrive - WESTERN CEDAR - 1x6 T&G, 1x8 beveled lap siding, 1x4
MINI SPLIT AIR CONDITIONERS/HEAT PUMP - 12,000 BTU, 18,000 BTU and 24,000 BTU - Indoor Units

• No Buyer's Premium • MORE COMING IN DAILY - check sites often

For pictures see Mt. Vernon Auction Company on Auctionzip.com (enter ID#29728 at bottom of page) or Facebook
 CELL 870-754-4428 • 870-715-5479 • 870-715-2326 (text only) • All items left over 30 days will be forfeited!!!

COME FOR THE DAY AND SAVE LOTS AND LOTS OF \$

MT. VERNON AUCTION CENTER

CONTACTS - CALL OR TEXT MIKE @ 870-754-4428 • TEXT ONLY @ 870-715-5479 or 870-715-2326



All announcements made the day of auction will supersede previous advertising.

13th Annual Spring CONSIGNMENT AUCTION Saturday, March 19, 2022 at 9:30 A.M.

SALE LOCATION: 1551 14000 Road, Altamont, KS 67330 **DIRECTIONS:** 1.5 miles east of Altamont, KS or 9 miles west of Oswego, KS on Hwy. 160.

NOTE: WE ARE ALWAYS CLOSED ON SUNDAY!

Tractors

2014 JD 6140R, CHA, MFWD, 4345 hrs, 20 sp. 3-outlets, with JD H340 loader
 2014 JD 6125R, CHA, MFWD, 1768 hrs, 20 sp. 3-outlets, premium cab, one owner
 2013 JD 6125M, CHA, MFWD, 2610 hrs, 24 sp. 3-outlets, with JD H260 loader
 2012 JD 5093E, CHA, MFWD, 1127 hrs. 12 sp. 2-outlets, with JD H240 loader
 2009 JD 7630, CHA, MFWD, 4655 hrs, 20 sp. 3-outlets, with JD 746 loader, Green Star ready, duals
 2009 JD 7430 Premium, CHA, MFWD, 4863 hrs, IVT, 2-outlets
 2001 JD 7410, CHA, MFWD, 2925 actual hrs, 16 sp. 2-outlets, with JD 740 loader
 2000 JD 7410, CHA, MFWD, 3950 actual hrs.
 16 sp. 3-outlets, duals, one owner, nice
 2003 JD 6420, CHA, MFWD, 6538 hrs, 16 sp. 2-outlets, with JD 640 loader
 1994 JD 8300, CHA, MFWD, 7051 hrs, 16 sp. 4-outlets, duals, one owner
 1994 JD 7600, CHA, 2wd, 5477 hrs, 16 sp. 2-outlets, 2-owner
 1993 JD 4960, CHA, MFWD, 7808 hrs, P.S. 3-outlets, duals
 1991 JD 4055, CHA, 2wd, 11k hrs, P.S., 2-outlets, complete OH at JD
 1984 JD 4250, CHA, MFWD, 8150 hrs. P.S. 2-outlets
 1979 JD 4440, CHA, 2wd, 8575 hrs. QR, 2-outlets, duals
 JD 4020, OROP, 2wd, 2984 hrs. gas, with loader, 2-owner
 2017 NH 17-210, CHA, MFWD, 1172 hrs. 18 sp. 4-outlets, duals
 2010 Case Puma 180, CHA, MFWD, CVT, 2127 hrs, 3-outlets, 2-owner
 2012 MF 2680, CHA, MFWD, 1781 hrs. 8 sp. 3-outlets, with Westendorf TA-26 loader
 2019 Kubota M65-111, CHA, MFWD, 856 hrs, 16 sp. 3-outlets, with LA1944 loader, one owner
 2014 Kubota M7060, CHA, MFWD, 1674 hrs. 12 sp. 2-outlets, with LA1154 loader
 IH 1486, cab, 2wd, TA, 2-outlets
 IH 966, cab, 2wd, TA, 2-outlets, 2-point hitch
 IH 1066, cab, 2wd, TA, 2-outlets
 Ford 7810, cab, 2wd, with Allied 795 loader
 Ford 340A Industrial, OROP, 2wd, 1858 hrs. 3 pt. PTO, 1-outlet, with loader

Farm Equipment

2010 Kinze 3660 planter, 16R30, corn & bean meters, liquid fertilizer, bulk fill with scales, pneumatic down pressure, 2-owner

Kinze 2200 planter, 12R30, no-till, monitor & markers
 White 8200 8R30 planter, corn, bean & milo meters, monitor, PTO pump, row cleaners
 Allis Chalmers 600 6R planter, 70 series row units, no-till, monitor
 IH 3900 19' tandem disk, new blades & scrapers, harrow, nice
 JD 630 25' tandem disk, good blades
 White 271 21' tandem disk with harrow
 Industrias Americas 2428 offset disk, new Industrias Americas 2228 tandem disk, new Glencoe 9 shank pull-type soil saver, one owner
 Baker 21 shank chisel, bumper bar leveler
 JD 2800 on land 6 bottom plow
 IH 710 6-bottom 18" semi-mount plow, auto reset
 Kent 6 series 30' field cultivator, 5-bar harrow, one owner
 Demco 650 grain cart
 Parker 514 grain cart, tarp
 E-Z Trail 500 grain cart
 Rem 2500 grain vac
 2010 Lanco LS 4000 18' lime/litter spreader, 10 ton
 Unverferth 1225 28' rolling harrow
 2016 Brillion S588 seeder, 8' pull-type, 50 acres
 Brillion S5T1201 seeder, 10' pull-type
 1998 JD 455 25' grain drill, very little use, one owner
 Hay Buster 107 10' no-till drill, 980 acres
 Gandy 10' no-till drill with small seed
 JD 8300 grain drill
 Patz V420 vertical mixer with front LH discharge
 2013 Vermeer BPX9000 bale processor, nice
 Tyler SS fertilizer spreader, tandem axle
 JD 925F 25' flex header with UTF header trailer
 Yetter 3421 20' rotary hoe
 Sukup 9400 8 row cultivator
 Custom Built 20' 3pt, spike harrow
 2-14' 4-wheel wagons with hoist & sides boards
 Several 4-wheel gravity wagons, one with auger
 Parker gravity wagon on gooseneck trailer
 Several Industrias America pull type grader blades, new
 3pt. post hole digger

Hay Equipment

2020 JD 450E baler, 275 bales, net, 540 PTO, like new
 2010 JD 468 baler, 19K bales, net & twine, 540 PTO
 2008 JD 468 baler, 16K bales, net & twine, 540 PTO

2004 JD 567 baler, 15K bales, net & twine, 1000 PTO
 JD 468 baler, 38K bales, net & twine, new belts, 540 PTO, oiler kit
 2015 MF 1745 baler, 4K bales, net & twine, 540 PTO
 2011 Vermeer 664 Rancher baler, twine, 3700 bales, 540 PTO
 2010 JD 568 baler, 13K bales, net & twine, 1000 PTO
 2004 NH 780 baler, 12K bales, net & twine, 540 PTO
 2003 Vermeer 605XL baler, net & twine, 540 PTO
 IH 2400 baler, twine
 JD 328 square baler, twine, one owner, nice
 JD 336 square baler, twine
 JD 346 square baler, twine
 Case IH 8330 mower conditioner, 9' cut, rubber & steel rollers
 2018 Kuhn GMD 3150TL pull-type disc mower, 10'2" cut, nice
 2010 Kuhn GMD 700 3pt. disc mower, 9' cut, one owner
 Kuhn GMD700 3pt. disc mower, 9' cut
 MF 1329 3pt. disc mower, 9' cut
 Samasz KDT341 3pt. disc mower, 11'2" cut, nice
 Krone AM403S 13' disc mower on KMC caddy
 Stoney Point SPM5415 disc mower caddy, nice
 Vermeer R2300 hyd. rake
 Vermeer R23 hyd. rake
 Sitrex QRX12 12-wheel v-rake, hyd. adjustment, walking tandem axles, nice
 Vermeer 10-wheel v-rake
 Vermeer WR20 8-wheel v-rake
 Enorossi RT12 12-wheel v-rake
 OMI 10-wheel v-rake
 NH 258 side delivery rake, dolly wheels
 JD Side delivery rake
 2011 Enorossi 4-basket hyd. fold tedder

Cutters

Land Pride RCM5015 15' batwing cutter
 Bush Hog 3008 8' pull-type cutter, like new
 Land Pride RCR2510 10' pull-type cutter
 Bush Hog BH116 6'3 pt. cutter
 Frontier 5' 3pt. cutter
 Rhino FM84.7 3pt. finish mower
 Land Pride 5' 3pt. finish mower

Construction Equipment

2021 Sany SY35U mini excavator, CHA, 27 hrs. 2-sp. 3-buckets, warranty, one owner
 2019 Kubota SVL 95-2, skid steer, CHA, tracks, 1041 hrs. 2 sp. ISO controls, high flow, nice
 2016 Kubota SVL 95-2, skid steer, CHA, tracks, 790 hrs. 2 sp. ISO controls, high flow, nice

2016 Kubota SVL 95-2, skid steer, CHA, tracks, 2090 hrs. 2 sp. ISO controls, high flow, nice
 2013 Kubota SVL75-2, skid steer, CHA, tracks, 3050 hrs. 2sp. ISO controls
 2013 Bobcat T650 skid steer, OROP, tracks, 2940 hrs. foot controls
 2016 Bobcat S570 skid steer, OROP, 338 hrs. foot controls, one owner
 2015 NH L230 skid steer, CHA, 1105 hrs. 2sp. ISO controls, high flow
 1998 Bobcat 863 skid steer, OROP, 2664 hrs, H controls
 Gehl 6635 skid steer, OROP, 4150 hrs. T bar controls
 Scat Trak 1300C skid steer, OROP, 2583 hrs. with steel tracks
 Steel tracks for skid steer with 12-16.5 tires
 Caterpillar 902 wheel loader, OROP, 4x4

Skid Steer Attachments

JCT 72" brush cutter, new
 Jenkins skid steer tree pullers, new
 Jenkins wood splitter, new
 Jenkins backhoe, new
 Several new skid steer 5500 lb 4' pallet forks, walk-thru
 Several new & used buckets
 Several new skid steer 2-prong bale spikes
 Several new receiver plates
 Shaver post driver

Trucks & Semi-Trailers

2015 Wilson Commander 41' hopper bottom grain trailer, roll over tarp, one owner
 2016 Neville 34' hopper bottom grain trailer, roll over tarp, nice
 2007 Freightliner truck, C13 Cat engine, 10 sp. single axle, day cab
 1993 IH 4800 truck, 4x4, DT466, 4/2 trans. with
 2005 Supreme 500 vertical mixer, scales
 1977 Chevy C65 10-wheeler truck, 16'x60" steel grain bed, 5/2 trans. 366 gas motor
 2011 Talbert 35-ton triple axle detach trailer
 2001 IH 4900 service truck with crane, DT466, 6 sp. trans.

Vehicles & Trailers

2019 Midkota trailer, 36' GN flatbed, tandem dual 12K axles, hyd. dove & jacks, electric over hyd. brakes, ratchet tie downs
 1995 Maxwell trailer, 24' GN flatbed, tandem 7K axles, dove tail
 1978 GN 7'x20' livestock trailer, tandem axle
 2011 Ford F350 XLT, crew cab, 4x4, 83K miles, 6.2 gas, auto

2005 Chevy 2500HD, crew cab, 4x4, 400k miles, Duramax
 1984 Ford F350 pasture sprayer truck, 460 gas, 4x4, 4-sp. 500 gal, boomless or 45' booms
 2001 Ford Escape, 2wd. Pw. PL. needs some work done

Livestock Equipment & Etc.

2022 Rawhide portable corral, super large, hyd. alley, loading dock, headgate, like new
 Stock Pro H2200 premium hyd. chute, palpation cage, new
 Stock Pro M1200 premium chute, palpation cage, new
 Stock Pro A880 chute, auto catch head gate, new
 Stampede Steel squeeze chute, palpation cage
 Big Valley M1 squeeze chute, palpation cage
 DH Standard Eco Plus squeeze chute, new
 Jenkins backhoe, new
 100+ 24' HD free standing corral panels, new
 Several new wooden mineral feeders, new
 Several gates, T-posts, feed bunks, etc.

ATV & UTVs

2016 Honda Pioneer 700R4, 4x4, 408 hrs.
 2013 Kawasaki Teryx 4 UTV, 4x4, 300 hrs. crew cab
 2013 Polaris Ranger 400 UTV, 4x4, 1247 hrs.
 2015 Cub Cadet Challenger UTV, 4x4, 143 miles, camo, winch
 2007 Kubota RTV900, 4x4, diesel, cab with heat
 2007 JD Gator TX UTV, 4x2, 534 hrs. power dump
 2002 Honda Forman Rubicon 500 ATV, 4x4, 473 hrs.
 2001 Artic Cat 250 ATV, 2wd

Misc. Items

2020 JD Z740R zero turn lawn mower, 48 hrs. 60" deck, tweels
 2010 JD Z445 zero turn lawn mower, 521 hrs. 54" deck, 25 HP
 JD Z445 zero turn lawn mower, 740 hrs. 54" deck, 25 HP
 16' steel pipe cattle guard
 JD 9' litter bucket

Major Equipment Sells at 10:00AM

Concessions available including homemade pies and baked goods, biscuits & gravy



Online Bidding Available on select item @ circleeauction.com

Auctioneer's Note: We will have a very nice line of items to sell. Almost every item is right off the farm. Something for everyone. Most of the items will sell with **No Reserve**. At our last auction, we sold over 90% of items consigned. Since sale bills are printed 3 weeks in advance, we usually have a lot more items than listed. We will be selling in several rings at the same time, so bring a friend. Because we rely on the word of others, all items are subject to No Show. All items are subject to prior sale. If driving a distance for a single item, please call.

NOTE: 9.25% Sales Tax will be added to all items that are not used for agriculture. All dealers must bring a copy of your resale sales tax license. **If you have items to sell, you can still consign to this auction!** We are open 8:00-5:00 Monday-Friday to check-in and unload your items. To have your equipment available for online bidding, your equipment MUST be on our lot by Tuesday, March 15th at 5:00 pm. No consignments taken after 5:00 pm Thursday, March 17th, 2022. For questions or to consign call Ervin at 417-310-0812 or Merlin at 417-310-3324 or e-mail us at circleeall@gmail.com. View pictures @ circleeauction.com. **Remember We Are ALWAYS Closed On Sunday. Everything must be removed in 14 days. After 14 days there will be a storage fee of \$25 per item, per day. Any items left after 30 days will be considered abandoned and will become the property of Circle E Auction.**

Terms: Cash or Good Check with Photo ID - All Buyers Unknown to Circle E Auction MUST Furnish a Current Bank Letter of Credit if Paying by Check. Not Responsible in Case of Accident or Sickness on Premises. Everything Sells AS IS-WHERE IS with No Warranty Actual or Implied. Not Responsible for Stolen Items or Loss of Items. Nothing Removed Until Settled For. All Announcements Daily of Sale Supersede Any Printed Material.



Circle E Auction LLC
 Your Farm Auction Specialists!
620-778-9966

Auctioneer
Ervin Eicher
417-310-0812

1551 14000 Road
Altamont, KS 67330

Auctioneer
Merlin Eicher
417-310-3324




ESTATE AUCTION

Saturday, March 12th, 2022 ~ 10:00 AM

**LOCATION: American Legion Building, 710 Locust, Lockwood, Mo (Watch For Signs)
Auction For Matthew & Jennifer Dennett & Family**



Antique, Modern Furniture & Appliances

Early 1900's Ant Kitchen Table & Chairs, Ant Square Oak Table, 4 Ant/Prim Wood Storage/Foot Locker Boxes, Ant Wood Sewing Rocker, Old Prim Metal Store Storage Cabinet, Prim Wood Shelves, Retro Swivel Sitting Chair, Prim Chest Of Drawers, Several Ant Pictures Some W/Ornate Frames, Old Light Fixtures, Sm Prim Wood Tables, Prim Kitchen Chairs, 2 Armoires, Entertainment Center, Bookshelves, Full Size Bed, Dresser, Nightstand, Queen Size Bed, Modern Kitchen Table & Chairs, Sitting Chair, Lift Chair, 2 Recliners, Oak 3 Section TV/Armoire Center, DVD/VHS Cabinet, Round Wooden Collapsible Table, Floor & Table Lamps, Wood Ironing Board/Step Stool, Quilt Rack, Lots Of Wall Pictures & Décor, Flat Screen TV's, DVD/VCR Combo Player, Washer & Electric Dryer, Other Items Not Listed

Antiques, Collectibles & Households

Ant Horse Tie Weight, Prim Wood Fold Up Ladder, Cast Iron Pcs Inc Skillets, Old Crocks & Crockery Pcs, Ant Apple Butter Paddle, Ant Lg Saw, Old Advertising Wood Boxes, Old Metal Thermometer, Old Advertising Yardsticks, Old Cream Can Cart, Old Cream Can, Rare Security Saddle Type Hammer (Never Seen One), Rare

Hand Forged Knife, Rare Silver Boy Scout Ring, Old Jars & Bottles, Old Corn Grinder, Set Of Old Red Lanterns, Old Round Budweiser Cooler, Longaberger & Other Old Baskets, Old Metal Advertising Pcs, Prim Hanging Corn Dryer, Old Stainless Milking Equipment, Graniteware, Old Paper Goods Inc Old Comics, Old Wrought Iron Pcs, Old Shell Fire King Bowl, Old Salad Master Pans, Old Glassware Of Various Kinds Inc Red, Green, White, Clear & Others, Lots Of Other Sm Metal & Wood Prim & Ant Pcs, Pots, Pans & Dishes (Some Old), Sm Electrical Appliances, Kitchen Wares & Other Household Related Items

Metal Lathe, Nail Gun, Tools & Outdoor

Related Items

Metal Lathe, Gas Powered & Battery Powered Snow Blowers, Pneumatic Nail Gun, Sm Hand Tools, Electrical Tools, Seeder, Trash Cans, Pet Food Container, Fishing Poles, Some Tackle, Old Tackle Boxes, Other Items Not Listed

Hundreds Of Items Will Be Added Sale Day Due To Being Stored & Unable To See, Also Family Are Adding Items Daily. Sure To Be Several Good Antique & Other Surprises Sale Day!!



Auctioneers Note: It Is An Honor To Be Conducting This Auction For The Dennett Family. This Is Only A Partial Listing As There Will Be Hundreds Of Items Added Sale Day Due To Being Stored & Unable To See. There Will Be Something Here For Everyone From Antique & Modern Furniture To Good Antique & Primitive Items Also Good Everyday Household Items. As Stated This Is A Family Auction So Sure To Be Many Items Added Sale Day. Please Plan Now To Attend. **Sale Order: Antique, Modern Furniture & Appliances Will Sell First Followed By Antiques, Collectibles & Households. Tools & Outdoor Items Will Finish Auction. See Ya There!!!**
Terms: Cash or check with proper ID. Now accepting most major credit cards. Nothing removed until settled for. Statements made the day of sale takes precedence over printed material. Everything sold as is where is. Not responsible for accidents. Restroom available. Concessions Provided. Check our website for upcoming auctions and for additional pictures!!



NANCE AUCTION SERVICE

No Matter How BIG or small, We Do Them All!!!

Col. Bill Nance 417-214-0093

PUBLIC AUCTION

Due to selling our farm and moving, we will sell the following personal property at auction, located from St. James, Missouri, take Hwy. B north 6 miles to Hwy. EE. Follow Hwy. EE 3 miles to private farm road. Turn right and continue 1 mile to auction. Follow Lorts Auction Today signs on

Saturday, March 12, 2022

Morning Sale – Sale to start 9 a.m. – Morning Sale

TRACTOR • SHOP EQUIPMENT • BOAT • ANTIQUES • HOUSEHOLD

Shop Tools & Equipment

Lincoln 225 amp welder
 6 inch Milwaukee angle grinder
 Milwaukee Sawzall
 Black & Decker 1/2 inch drill
 Red Snap-R electric fence
 Tile saws — Tile slice/breaker
 Robi ban saw
 Tradesman 12 inch drill press
 Extension cords
 3/4 inch drive sockets
 Impact sockets
 Snap-On assorted wrenches
 Open end wrenches
 Pipe wrenches — Air hoses
 Craftsman 3/4 inch socket set
 Bench grinder on stand
 Black smith post vice
 Chain binders — Tow chains
 3.5 ton floor jack
 Tractor & trailer spare tires
 Seneca air gun
 Battery charger — Shop carts
 Metal tool boxes
 110 air compressor
 Bar clamps — Assorted hardware
 6 ft. metal shop cabinet
 Husqvarna 155 BT backpack blower
 30 hay bales (4x5)
 Stihl FS90 weed trimmer
 Stihl FS131 trimmer w/saw blade
 Lots of hand tools
 Tank heaters
 Small Ritchie water tank
 4 wheel metal garden wagon
 Gas cans — 2 wheel cart

Dolly — Shop lights
 Garden soaker hoses
 14 inch metal chop saw
 3/4 inch drive socket set
 Quick fire pole saw
 Trailer jacks — Axes
 6 ft. step ladder
 Assorted barrels
 Grease guns — Bolt cutter
 Fencing supplies
 Tractor hydraulic oil
 Deer feeders
 Several chain saws
 Tractor cross bars
 Well pulley — Tree trimmer
 Wood wedges
 Hand wrench
 Oil cans — Pitch forks
 Rebar — Crimpers
 Several job box
 Cattle feed troughs
 Cattle water troughs
 Assortment of building stone
 Antique iron wheels
 Safety straps
 Window weights
 8 inch heavy duty vice
 Wooden ladders
 Red bricks (several)
 Stone & bricks
 Decorative iron fence
 28 inch house doors
 Closet brackets & shelving
 Laboratory single sink
 10 ft. cattle panels

Lumber & Building Supplies

3/4 inch plywood — Pine log siding
 16-18 ft. tongue & groove cedar deck material
 36 inch brown barn tin (used)
 Roofing shingles (3 tab & architectural)
 13 ft. TGI floor joist
 4x8 ft. 7/16 inch oxboard
 Lots of windows
 LP vertical siding
 Basement steel posts
 Scaffold w/rollers & stand
 Roll of rubber roofing
 Logging tools
 4 inch round steel pipe
 Two 17 ft. 8 inch steel I-beams
 Two 21 ft. 12 inch steel I-beams
 One 26 ft. 8 inch steel I-beam
 2x4 lumber in 10-12 ft. lengths
 2x6 lumber in 14-16 ft. lengths
 2x12 lumber in 14-16 ft. lengths
 2x8 lumber
 1x6 lumber in 16 ft. lengths
 1x10 lumber in 16 ft. lengths
 1x4 LP trim — 1x6 lumber
 6x6 treated cedar posts
 1/2-3/4 inch oxboard
 Lot of vinyl siding/trim/soffit
 Lots of misc. lumber
 Lots of cedar lumber
 Set of 18 ft. gable trusses
 Dimensional lumber, kiln dried, stored inside (will sell in assorted bundles)

Household, Furniture & Antiques

3 piece antique oak bedroom set, full size bed, dresser & chifferobe
 Brown leather La-Z-boy recliner
 American Home Collection brown leather couch w/cloth upholstery
 Dark brown leather couch
 American Home Collection chair
 Wicker patio set — Cast iron pots
 Pepsi Cola soda machine (cans)
 12 gun knotty pine gun case
 Maple table w/4 chairs

Child's desk — Wall decorations
 Sunbeam small microwave
 Toledo commercial meat saw
 America commercial meat slicer (Chicago, IL)
 Cross bow by Wieder
 Flambeau compound bow w/arrows (in case)
 Darton compound bow w/case
 Fishing poles
 Folding lawn chairs
 Hammock w/frame
 5 metal patio chairs

Farm Equipment & Boat

Farmall Cub tractor w/4 ft. mower, w/lights, starter (overhauled), 12V, good rubber (nice)
 Cub Cadet zero turn mower w/Kohler engine, 60 inch cut
 16 ft. x 82 inch J&W trailer w/ramps & new bed (good rubber)
 Two 3 pt. grass seeders
 3 pt. 1 row Allis Chalmers corn planter
 4 wheel wagon frame
 10 ft. 3 pt. scratcher
 MDT 20T portable log splitter w/new motor
 14 ft. jon boat w/flat bottom, gigning rail, 40 hp. Mercury jet motor w/title & trailer

"like" us on Facebook - Lorts Auction Service or view this auction online at www.threeriverspublishing.com or auctionzip.com (auctioneer ID #42353)

Roy & Sherrie King

20000 State Rt. EE, St. James, MO 65559

Many more articles too numerous to mention

AUCTIONEER'S NOTE: Lots of clean items on this auction. Off the road parking is available. Bring your trailers! Equipment on premises to assist with loading larger items. Mark your calendar and plan to attend on Saturday, March 12.

Lorts Auction Service

Cash or check with photo I.D.

No debit/credit cards.

TERMS: Not responsible for accidents or losses, should they occur. • Nothing removed until paid for. • No buyers fee. Lunch Served — ALL ANNOUNCEMENTS MADE SALE DAY TAKE PRECEDENCE OVER ALL PRINTED MATERIALS —

SALE CONDUCTED BY **LORTS AUCTION SERVICE** • ST. JAMES, MO 65559 • 573-263-1509 • 573-263-0243
 AUCTIONEERS: Larry W. Lorts & Gary R. Lorts
 Licensed and Bonded

LAWN SERVICE BUSINESS LIQUIDATION AUCTION

SATURDAY, MARCH 12, 2022 @ 10:00 AM

4048 E. Kearney • Springfield, Mo 65803

INVENTORY LIST:

- S300 turbo Bobcat 2669 hrs with Two buckets
- 2007 F350 lariat super duty V-8 Power Stroke
- 2008 4x4 F250 Lariat Super Duty V-8 Power Stroke
- 2001 F250 super duty V8 5.4 Triton
- 2001 F250 parts truck
- Acetylene torch set
- Lincoln easy mig 180 Welder
- Lincoln 225 arc welder
- Campbell Hausfield extra duty 60 gallon
- Scag tiger cub zero turn mower 48"
- Exmark parts mower 72"
- Toro 72 inch parts mower
- Sno-way salt spreader
- Amana Upright freezer
- Weed eater parts
- Exmark explore sprayer/scraper
- Hoist
- Parts blowers
- Spray boom
- Skid steer/tractor plow
- Spray tank
- 7 6' x 22" barricades
- Enclosed trailer top
- Weedeater and lawnmower
- Miscellaneous parts
- Fuel tank
- 12 foot bumper hitch trailer
- 8' x 5 trailer
- Pallet jack
- Miscellaneous exmark parts
- Planting pots
- Metal filing cabinets
- Office desk and chair
- Orange and green chairs
- Office chairs
- Bookshelf
- Floor lamp
- Small bookshelf
- Two white cabinets
- 8 foot lifetime folding table
- West Bend microwave and microwave cart
- 2006 Ford box truck
- Needs motor replaced
- Foosball table
- And more!



FOR MORE INFORMATION GO TO WWW.EASTERLYAUCTIONCO.COM OR CALL EASTERLY'S AT 417-833-9494



Mike Easterly Auctioneer • 417-833-9494

Not Responsible for accidents or theft. For more information call: Easterly Auction Company, Springfield, MO. Auction Terms: Visa, Mastercard, Cash, Cashier's check or checks with proper I.D. Announcements day of sale take precedence over printed material. Auction Notes: Although information is obtained from sources deemed reliable, auctioneer makes no warranty or guarantee expressed or implied. Buyers should themselves take the opportunity to make their own inspection prior to sale.

www.EasterlyAuction.com • auctionzip.com ID#14770



Sam
CRAWFORD AUCTION SERVICE LLC
ESTATE AUCTION

Will sell the following in Sycamore Valley - Warsaw, MO. North Hwy. 65 (Wal-Mart Exit). Then East on Lost Valley 3.2 Miles to Sycamore Valley Rd. Then SE 1 Mile to Spruce.
 Watch for auction signs.

SATURDAY, MARCH 19TH, 2022 - 10 AM

TRUCKS - TOOLS - HOUSEHOLD - COLLECTIBLES - MISC.

TRUCKS

'05 Ford 3/4 Crew Cab 4x4, 6.0 Diesel, Motor Is Bad, Not Running, Title
 80's Dodge 1/2 Ton 4x4 For Parts
 Old Pickup Bed, 2 Wheel Trailer
 Older Fifth Wheel, 20' Camper Trailer

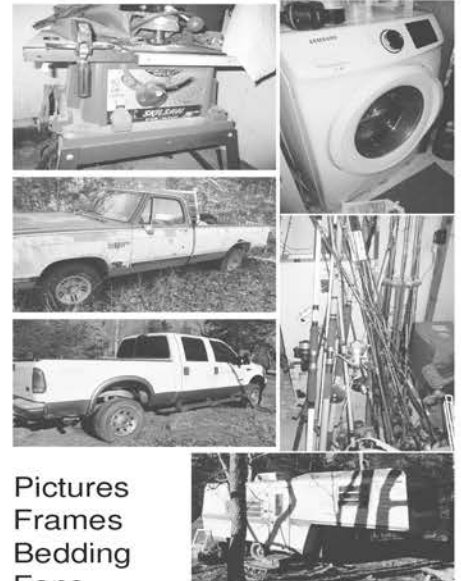
TOOLS

2 Husqvarna Chainsaws
 Ryobi 8 1/4" Radial Arm Saw
 Craftsman Radial Arm Saw
 Pro Tech 10" Table Saw
 Floor Drill Press
 Skil 10" Table Saw
 Portable Generator
 Cut Off Saw
 Miter Saw
 2 House Jacks
 Asst. DeWalt Cordless Tools
 Lot Asst. Power Hand Tools
 Some Wreches, Sockets
 Hammers, Screwdrivers
 Asst. Long Handle Tools
 Brass Prop.
 Antique Mono Outboard Motor
 20-25 Asst. Rods & Reels
 Sev. Tackle Boxes
 Lot Lures
 10-12 Sinkers Molds
 Lot Lead
 2 Fiberglass Ext. Ladders

Fiberglass Step Ladder
 2 100# Gas Bottles
 Propane Wall Heater
 Lg. Wheelbarrow
 Yard Trailer
 3 Pc. Tool Chest
 Ice Chests
 10-12 Jts. Heavy Wall Plastic Pipe
 Some Scrap - Some Lumber
 Other Misc.

HOUSEHOLD & MISCELLANEOUS

Round Oak Table, 6 Chairs
 Kenmore Gas Range
 Frigidaire Refrigerator
 Small Upright Freezer
 2 Chest Freezers
 Samsung Front Load Washer
 Hotpoint Dryer
 Kenmore Sewing Machine
 2 Corner Curio Shelves
 Curved Glass China Cabinet
 Coffee Table - End Table
 Other Small Tables
 2 Chest Drawers
 Queen Bed w/Brass Headboard
 Ant. Glider Rocker
 Ant. Wood Desk
 Computer Desk
 Computer & Misc.
 Small Brass Bell
 3 Painted Saw Blades



Pictures
 Frames
 Bedding
 Fans
 Heaters
 Asst. Pots & Pans, Some Dishes
 Lot Asst. Brass Figurines
 Other Figurines
 Lg. Button Collection
 20-25 Cookie Jars
 15-20 Budweiser Steins
 Cast Iron Skillets
 2 Gal. Crock Jar
 Lg. Glass Jars
 Borden Wood Milk Crate
 4-5 Stainless Steam Table Pans
 2 Metal Lawn Chairs
 Other Misc.



TERMS: Cash or good check. Nothing removed until settled for. Not responsible for accidents. Lunch available. Statements made day of sale take precedence over printed matter. All items sell as is. No warranties given or implied.

417-998-6629
 Cross Timbers, Mo.

CrawfordAuctionService.com



Sam
 417-328-9137

Chase
 417-399-1904

Chance, CAI
 417-298-1751

Tom Poynter
 Jack Lancaster

Estate of Bruce Kramer

Living Estate Auction



Joe & Tammy
Kimbrough

Missouri State Fair Grounds • Mo-Ag Theater
2503 West 16th St. • Sedalia, Mo. 65301

Directions: From 50 & 65 hwy intersection go South on 65 hwy to 16th St. stop light turn Right (West) on 16th St. to State Fair Grounds entrance on Left. Watch for signs on Sale Day.

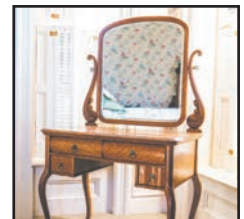
As we have sold our home & downsizing to the lake, we will sell the following at public Auction on:

Saturday, March 12th, 2022 at 10:00am

HIGH QUALITY ANTIQUE FURNITURE & HOUSEHOLD MISC.

Half tester bed burlwood inlays extremely ornate w/two matching marble top dressers & washstand, (converted to Queen size – also have original full rails), **Half tester bed** burlwood inlays extremely ornate. Washstand w/burlwood inlays, Large wardrobe w/burlwood panels, Tiger oak knock down wardrobe w/beveled glass mirrors & columns, Tiger Oak wardrobe bevel glass mirrored doors serpentine front, 70" Visio flat screen TV, 6 – hand painted hurricane lamps (one is 34" tall excellent quality – MUST see), Large 63" w by 91" tall tiger oak entry mirror w/beveled glass & columns, French ornate display curio, 3 tier Barrister bookcase, ornate oval fireplace screen, Victorian ball and claw oak barley twist leg table, 2 - Victorian high back sofas, velvet gondola armchair, Victorian armchair w/needle point cushions, Large glass front show case – bookcase, Victorian oak partners desk, English Linenfold Armoire Cabinet, Georgian English hanging corner cabinet, oak buffet, quarter sawn buffet w/mirror back & columns, Quarter sawn oak table w/carved lion pedestal base & claw feet, oak side by side secretary, Ross patented table washstand, ornate mirrored oak sideboard, walnut fall front chest, tiger oak vanity, cast iron fire side bench w/

paw feet, quarter sawn oak side table, burl wood corner cabinet, heavy oak / ornate library table, formal oak dining room table claw feet 3 leaves & 6 press back chairs, Victorian side chair, Ross washstand, heavily carved Gentleman's chair, 3 - settees w/wood accents, Fireplace screen with reversible tapestry, marble top washstand w/ carved handles, lg brass candle stick, 2 – "Standard Oil" jars w/spouts, lot old books, Antique kitchen clock, lg lot ornate pictures & wall art, Lot floor & table lamps, Victorian cast iron foot stool, vanity set, fainting couch w/wood accents, Overstuffed dual reclining leather sofa, 3 – overstuffed leather rocker recliners, 2 – cheval mirrors, Oval entry mirror w/oak frame & three coat hooks, mahogany table mirror, marble top fern stand, Wood & iron day bed w/trundle, record cabinet, early hand painted Nippon chocolate set, pitcher & bowl set, lot apple green depression glass, oval mirror w/oak frame, etched glass wall mirror, treadle sewing machine, cast iron dinner bell, Montgomery Ward 31-day mantle clock, Small sewing cabinet, half round foyer table w/shelves, ball & claw piano stool, misc occ tables, Tall mirrored back curio, lg lot DVDs & VHS tapes (many Disney), lot misc. pots pans & kitchenware.



MANY MORE ITEMS TOO NUMEROUS TO MENTION

*Statements made day of sale take precedence over printed material.

Auctioneer Note: We are Honored to Conduct this Auction of true MUSEUM quality furniture, There are many more items to be sorted and added as near the Auction date. Hope to see you there. Concessions provided by the "Benton County Good Ole Gals"



JOHNSON AUCTION SERVICE

"Third Generation Family Tradition since 1942"

Russell "Rusty" Johnson (660) 221-4067 • Phillip Yoder (660) 723-3389

For Full Listing,
Pictures
and Details
auctionzip.com
(ID# 20300)

BUFFALO LIVESTOCK MARKET LLC



276 Hwy 32 W., Buffalo, MO
March 5th, 2022
Receipts: 1853 Head

Feeders 300-550# \$3-\$5 Lower. 600-800# Steady.
 Slaughter Cows & Bulls \$3-\$8 Higher.
REPRESENTATIVE STEERS

- 300-400 @ 182.00 to 212.50
- 400-500 @ 174.00 to 196.50
- 500-600 @ 165.00 to 195.00
- 600-700 @ 162.00 to 174.00
- 700-800 @ 147.00 to 156.00
- 800-900 @ 140.00 to 154.00

REPRESENTATIVE HEIFERS

- 300-400 @ 160.00 to 184.00
- 400-500 @ 156.00 to 173.00
- 500-600 @ 145.00 to 163.00
- 600-700 @ 134.00 to 144.00
- 700-800 @ 128.00 to 134.00

FEEDER BULLS

- 300-400 @ 180.00 to 200.00
- 400-500 @ 160.00 to 187.00
- 500-600 @ 160.00 to 174.00
- 600-700 @ 142.00 to 156.00
- 700-800 @ 115.00 to 140.00

BRED COWS

1,100.00 to 1,275.00

COW-CALF PAIRS

1,100.00 to 1,250.00

SLAUGHTER COWS

- High Dressing 96.00 to 101.00
- Med Dressing 80.00 to 95.00
- Thin Flesh 75.00 to 80.00
- X Thin 45.00 to 60.00

SLAUGHTER BULLS

- High Dressing 123.00 to 132.00
- Med Dressing 97.00 to 118.00
- Low Dressing Thin Flesh 75.00 to 85.00

Special Cow Sale • Tues, March 15

Pre VAC Sale • Sat, March 12

MON-WED MARKET REPORT

Listen to KJEL 103.7FM • Lebanon or KY00 99FM • Bolivar

VIEW OUR SALES AT CATTLEUSA.COM

CALL FOR TRUCKING OR ON-FARM VISIT

Lyle Caselman • Owner-Manager
 417-345-7876 • mobile 417-533-2944
Leon Caselman • Owner
 417-345-4514 • mobile • 417-588-6185

GM ½ TON 4-WHEEL DRIVE FRONT AXEL HOUSING: With 3.07 gears. Fits a 77 to 87. \$80. 314-303-7857. Cedar Hill.

REGISTERED POLLED HEREFORD BULLS FOR SALE: Ready to go to work. 417-259-0588. Hartville.

CABLE PULLING JAW GRIP: Klein 1684-5, excellent condition. \$150. 314-303-7857. Cedar Hill.

GERMAN SHEPHERD PUPPIES: 3 weeks, 2 males, 2 females. 417-733-7062. Niangua.

AKC REGISTERED GERMAN SHORTHAI R PUPPIES: 14 weeks old. \$150. 417-838-3109. Niangua.

FISHING SEASONS COMING: Get your rod and reels, \$5 and up. 417-589-8200. Conway.

L3901 KUBOTA 4WD TRACTOR WITH LOADER: 38hp, hydrostat transmission. \$22,900. 417-270-1505. West Plains.

PYRENEES PUPPIES: 10 weeks old. From Working Parents. \$200. 573-363-5213. Eldridge

AUSBURN FAMILY ESTATE & FRIENDS FARM EQUIPMENT & HOUSEHOLD AUCTION



- > Ford 8N Tractor
- > 1999 Gooseneck Horse Trailer
- > BMB 60" Brush Cutter
- > Little Terry 62" Angle Blade
- > Fredonia W18 Electric Cement Mixer
- > Saddles, Blankets, and Other Horse Equipment
- > Walnut, Sycamore, and Cedar Lumber
- > Vintage Furniture & Metal Structo Trucks

Specialty Items: Are You Into Wine Making? True Brew Equipment Including Titrator, Filter Pump, Glass Carboys, Tanks & Other Supplies

Preview: Monday, March 14th

3:30 PM to 5:30 PM

600 West Brown School Road, Columbia, MO

Bidding Ends:

Tuesday, March 15th at 12:30PM
Bid Online At AtterberrySells.com

Payment & Pick-Up: Wednesday, March 16th
By Appointment Only

Check It Out & Bid Online At
www.AtterberrySells.com

For complete terms, listing, catalog, pictures & bidding, visit atterberrysells.com, email contactus@atterberryauction.com, or call (573) 474-9295. Please contact our office if you need help with the online bidding process.



BUFFALO LIVESTOCK MARKET LLC



276 Hwy 32 West Buffalo, Missouri
 417-345-8122

SPECIAL STOCK COW & BULL SALE

Tuesday, March 15 @ 6:30pm
Expecting 400-450 Cows & Bulls

- 20 - Blk Cows, 3-6 yrs. old. 3rd stage, bred to Blk Angus/ Sim Angus.
- 10 - Blk BWF Heifers, 2 yrs. old. 3rd stage, bred Blk.
- 40 - Blk/Red Cows, 6-BM. 20 calves, balance 3rd stage, bred to Branley Char Bulls or Beefmaster.
- 6 - Longhorn Cows, 7-SS. Bred to Char or Beefmaster, few with calves. Lost lease.
- 4 - Angus Cross Blk Heifers. Bred to calve March 1 or couple will have calves by side, fancy. Only for sale due to health of owner.
- 25 - Blk - Red Cows, 5-7 yrs. 2nd and 3rd stage.
- 5 - Blk Sim Bulls, 16-18 months old. Ready to use.
- 1 - White Shorthorn Bull, 14 months. Gentle, shown by a young girl.

MON-WED MARKET REPORT

Listen to KJEL 103.7FM • Lebanon or KY00 99FM • Bolivar

VIEW OUR SALES AT CATTLEUSA.COM

CALL FOR TRUCKING OR ON-FARM VISIT

533-2944

Lyle Caselman

588-6185

Leon Caselman

DUE TO LOSS OF WIFE: ADA Equipment. Quantum Multi-Functional Power Chair. Jazzy Mobility Scooters. Upright Walker. Rollator Walkers. Therapy Chair. Potty Chair. Wheelchair Transport Chairs. Submersible Wheelchairs. and Miscellaneous. 573-6994351. St. James.

PAYING CASH MOBILE HOMES: Single & Double Wide. We Remove & Take Care of everything. Call Charlie at 573-786-4003. Steelville.

WORKING STOCK HEELER PUPPIES: 4 Red & 2 Blue. 417-664-5926 Conway

4 USED TIRES FOR SALE:

31X10.50X15, 6-ply, excellent trailer or implement tires. \$60. 573-743-6257. Steelville.

ORGANIC CHICKEN LITTER/HIGH CALCIUM LIME:

Delivered trailer loads, \$120T. Spreader truck available. 800-807-9612.

BEST PRICES ON ROCKY

FOOTWARE: Free shipping. Mon, Wed, and Fri. 8-8:30 am. 573-759-3851. Yoders Outdoors. Dixon.

WTB USED SMALL FARM

EQUIPMENT: Brush cutters. Discs. Plows. Rakes. ect. Any Condition. Daniel Lewis. 573-729-0272. Salem.

MASSEY FERGUSON 150: 3cyl Perkins Diesel. Runs Good. Needs Some Work. Comes with 5ft Brush hog and Blade. With Spare Parts. Rear Tires are Good. Front Tires are New. With One Spare. 573-435-0014. Edgar Springs

HAMMERMILL 220V: Grind Your Own Grain. \$825. 417-322-0161 Lebanon



SMALL ANIMAL SALE

March 11 @ 6pm

- Sheep • Goats • Ducks
- Chickens • Ponies
- Calves • Rabbits

Accepting Stock & Misc. Farm. Equipment at noon.

Summersville Small Animal Sale LLC
245 2nd St. • Summersville, MO
Call Mitch for more information: 417-241-5558

WE BUY AND SELL
new and used mobile homes



(417) 501-1061

Larry Heisel Rentals
LARGE or SMALL...



We Rent!

Crawler Loaders • Excavators • Backhoes

Call Larry! We Deliver!

573-779-1500
www.larryheiselequipment.com

Rental Available in 636 or 573 area code

FOR SALE: Approximately 800-1000 VHS movies, more than 300 westerns bought new, viewed one time. \$250. 573-453-2777. Salem.

30' FRIGIDAIRE GAS RANGE: 4 burner, stainless, less than 5 years old, very good condition. \$200 obo. 417-286-3212. Stoutland.

ANTIQUA TRACTORS: For Serious Collectors. 1947 John Deere "D" \$6000. 1947 Oliver Standard "80" \$4400. Also Straight Original Farmall "H" \$1750. 417-848-8754 Springfield, Mo area.

2002 F250 4x4 CREW CAB: 5.4 Triton V8. Brown with Beige interior. 119,000m. One Owner. Goose Neck Hitch. Brake Controller. New Tires. Excellent Maintenance Record. \$15,000. 660-974-2113. Cole Camp.

WHITE DOPER LAMBS FOR SALE: Various ages, some breeding age. 417-464-0002 or 417-935-2635. Seymour.

MF 124 SQUARE BALER: with Farm Hand Accumulator & Grapple \$5500. Gooseneck Trailer (no Title) \$800. 471-322-0161 Lebanon

WORK FROM HOME: Health & Wellness Company. Looking for Independent Distributors. Great Product & Compensation Plans. Low Start up Cost of Only \$19.00. Go to americandream4me.com/Roberts To Sign up or Order products at 785-534-1470 Use ID# 24322. LaGrange, Mo

BASEBALL CARDS & MEMORABILIA: \$100. 417-533-4442. Lebanon.

WANTED R MODEL MACK TRUCKS: Paying cash. 417-529-6630 or text 832-784-5105. Phillipsburg.



MID MISSOURI STOCKYARDS

REGULAR SALE EVERY THURSDAY 11 AM

WATCH OUR WEEKLY SALE IN REAL TIME ON DVAUCTION.COM

For Farm Visits, Market Updates, or Trucking
Call Zach Cox 417-777-1320
Dan Romine 573-578-4939

**Competitive Buyers!
Competitive Commission!
Competitive Market!**

Barn: 417-532-9292 

I-44 • Exit 123 "just outside of Lebanon"
17505 Route 66, Phillipsburg, MO 65722

For weekly market updates, visit us at www.midmostockyards.com

AUCTION HERMANN MO AUCTIONS

Thursday, March 17, 2022
6 P.M. • 513 Market Street
Hermann, Mo. 65041

Furniture, table, chairs, couches, recliner, lots of great furniture items and more items coming in.

SEE: www.Facebook.com/HermannMoAuctions
OR AuctionZip.com

TERMS: cash or good check with proper ID or charge (3% fee applied for charge cards) Everything sells AS IS. ALL Sales Final
Food & Drinks Available

CALL: (573) 409-0019 for information or (314) 608-1468

Salem Livestock Auction
Hwy. 32 Salem, MO • 573-729-8880
Over 40 Years in the Livestock Business

Stock Cow Sale
Saturday, March 19th
at 1:00 pm

All Consignments Welcome Up Until Sale

Allen Thompson 417-932-4097
Chuck Thompson 417-257-5610
Renee Lauderdale 417-926-2682
Brandon Barton 417-259-1597



SALEM LIVESTOCK AUCTION
SALEM, MO

Terms of Sale: Cash or Approved Check!

YOUR LAND AND FARM EXPERTS!

Phelps Co-19.25 Ac. \$67,375

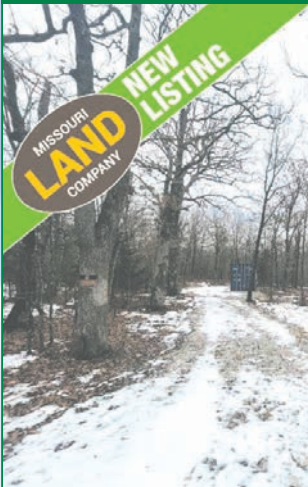
Call Jason at 270-350-6434 today



Located less than 10 minutes from Rolla is this vacant wooded parcel with some great views of a lake across the road. This land has county road frontage. Very quiet area less than a mile to Mark Twain National Forest and Little Piney Creek for kayaking and swimming. There are no restrictions, and more acreage is available. Tracts 3,4,5, and 7 have sold already.

Morgan Co-4.56 Ac. \$40,000

Call Pamela Dempsey today at 660-553-8677 to schedule a tour of the property!



Here's the parcel you've been waiting for! This 4.56+/- acre tract lays well with plenty of level ground to build and expand on, as well as some rolling hills that create a recreational haven. You'll love the wet weather creek that meanders through the back corner of the property. This parcel is full of wildlife and has plenty of mature oak on it to sustain a solid food source that the deer love. The owners have done a lot of work to improve the property and set it up to where it is ready for you to start building your dream! They have brought electricity onto the property have it running to a 30 AMP RV plugin with a 110 receptacle as well. They've also put a cargo container on the property and have power running to it. There is a well already in place with 2 water spigots. One is located just next to the storage container while the second is over by the RV site. A nice gravel road system has been put in to give you easy access in and out with your equipment and trailers. For you race fans, this property is located just 5 minutes north of the new Ozarks International Speedway that's coming soon right off Highway 135! There are some light covenants and a small annual road maintenance fee. Please see the attached file to review that information. This is what everyone is looking for.

Benton Co-40 Ac. \$129,500

Call Mike Stoner at 573-774-9775



PRICE REDUCED 3/3/22 This is a very secluded 40-acre tract in Benton County. The property has a remote 24 x 24 cabin, it would be perfect for a hunting camp. Also has a wood stove to heat the cabin with. Property also has an additional storage shed. Trails run through the property to get to some hidden food plot areas. Some nice mature timber along with some scrubby thick stuff make the perfect deer habitat. I jumped a herd walking down the ridge to the box blind on the north end. Deer rubs were everywhere from this fall. This is living remotely with no electric well or sewer, there is an outhouse for that business. Lays well with some nice flat top hardwood ridges along with some deep ravines. This area is behind a shut gate so not everyone can just drive by the property. This is close to lake of the Ozarks, literally just right down the road. These properties don't last long!



Rolla Office:
12647 S. Hwy 63, Rolla
573-308-4868

Cole Camp Office:
14981 Centerline Ave.,
Cole Camp
660-668-4868

www.missourilandco.com • 660-668-HUNT

Toll FREE number for both locations 844-974-1850

CONTEMPORARY CHRISTIAN CD COLLECTION: \$100. Lebanon.

WANTED 24X12 FORD 4100 REAR TRACTOR WHEEL: And 6 loop 24x16.9 tire. 417-457-1015. Raymondville.

30 GALLON AUXILIARY FIBERGLASS FUEL TANK: \$50. 417-766-1991. Rogersville.

LOADER BUCKET: 5 ft. good condition. \$200. 417-766-1991. Rogersville.

CABLE 80 FT LONG 3/4 IN: New \$80. 417-753-2747. Rogersville.

FARM HAND HYD BUCKET LOADER FOR MID SIZE FORD TRACTOR: \$2750. 573-765-4406. Richland.

CYCLOPS & PARMAK CHARGERS

- Deli Sandwiches
- Glass Bottle Milk
- Homemade Yogurt
- Cheese & Spices
- Homemade Bread
- Bulk Foods
- Hydraulic Hoses
- Johnson & Ritchie
- Electric Fence Supplies
- Waterers
- Stay-Tuff Fence
- Gates & Panels

VISIT YOUR ONE STOP SHOP
FARMERS QUIK STOP
 5 mi. East of Lebanon on Hwy 32 • 417-991-1938

KUSTER LOGGING

BUYER of Standing Timber Oak and Walnut

Dozing Now Available

417-259-0047

References Available

Cheyenne Acres
 Horse & Tack

BUY - SELL - TRADE
 by Rolla, MO
 Call For Directions & Availability

Call Kip
573-368-9402

I DO POWERWASHING: And dock and deck staining. Call 1-573-836-2939. Camdenton.

FOR SALE: 16 foot long flat bed trailer, 2" wood floor, 4 wheel good rubber, ball hitch, good condition. \$700. 417-532-8048. Lebanon.

OLDER MODEL ELECTRIC WELDER: Good size & full of copper. \$150 or trade. 573-734-2822. Bismark.

PUPPIES FOR SALE: Australian Shepherd cross, 2 male, 2 female. 3 Blue merles, 1 tri-color. \$250. 417-818-5539. Norwood.

STRAW FOR SALE: Small Squares \$4.00 each. Large Squares \$40.00 each. 5x6 Round Bales \$50.00 each. 573-539-2060. Versailles

67 MUSTANG HEADS: \$100 or trade. 573-734-2822. Bismark.

FOR RESALE: 5 pair – colors – denim jeans, elastic band. Size XL, regular price \$20 each. Selling \$5 each. 417-322-2960. Leave Message.

JOHN DEERE 310C DIESEL BACKHOE LOADER: Runs nice. \$11,500. 573-765-4406. Richland.

750 GAL. PASTURE SPRAYER: Tandon axle, single jot, hyd pump. \$2,300. 573-765-4406. Richland.

KENT

EnergiLass

- A tub for every stage, every phase
- Consistent, controlled intake
- Nutrient-dense supplement
- Complements pasture and forage

EnergiLass EcoTub
 Biodegradable Container
 200lb EcoTub

EnergiLass
 250lb

Farm Dog Feed ONLY \$18/Bag!!
 While supplies last

Portable Feed Bins Ready For Your Farm!

Stocked & Ready for all your Livestock Feed Needs!

"DOING BUSINESS ON OUR WORD AND A HAND SHAKE"
 Located in the Heart of the Amish Mennonite Community!
 417-345-8600 • 19 Prairie Lane, Buffalo

Built on Trust
 EST. 1927

Kropf Feeds

kentfeeds.com

FOR SALE: 1970 John Deere 4020 diesel tractor, 2014 New Holland BR7060 baler, 2015 Kuhn 10-wheel rake, 2020 Sitrex tedder, 6ft off-set disk plow, 4ft 3-point disk. ALL in excellent condition. 417-464-3895. Mtn. Grove.

WANTED: Older model 1 Ton Wrecker, El Camino, Truck or Hurst. 573-734-2822. Bismark.

AUSTRALIAN & ENGLISH SHEPHERD PUPPIES FOR SALE: Out of working parents, natural bob-tails. 573-760-5157. Centerville.

JOHN DEERE 566 ROUND BALER: Monitor, kicker. \$5,200. 573-765-4406. Richland.

750 GAL PASTURE SPRAYER TADEM AXLE, HYD PUMP, SINGLE JET \$2300. 573-765-4406. Richland.

JOHN DEERE 469 ROUND 4X6 BALER: Monitor, kicker, net wrap, very nice. \$28,500. 573-765-4406. Richland.

FORD 5600 DIESEL TRACTOR: 60hp. Runs nice. \$7,850. 573-765-4406. Richland.

GLASS FOR 55, 56, 57 CHEVY CAR: \$200 or trade. 573-734-2822. Bismark.

2 GENERATORS, 2 STARTERS: For Volkswagen. \$75 or trade. Bismark.

JOHN DEERE 2950 DIESEL TRACTOR: Cab & cold air, 85 h.p. 4,500 hrs. \$28,000. 573-765-4406. Richland.

1963 CHEVY 2 – 190: 6-cylinder motor. \$200 or trade. 573-734-2822. Bismark.

HENRY HOWARDS BALE ROLLER \$400. 573-765-4406. Richland.

OFFICIAL TRACTOR OF TOUGH™

INTRODUCING THE ALL-NEW 5100 SERIES

Marshfield Machinery Inc.
 222 E. Madison • Marshfield, MO 65706
 417-859-2117 • www.marshfieldmachinery.com

*2018 data including all Mahindra group brand sales. MahindraUSA.com © 2020 Mahindra USA Inc.

Mahindra
Rise.

NEW MAHINDRA TRACTORS

1626 4WD & LDR	
26HP	IN STOCK
1635 4WD & LDR	
6HP	IN STOCK
2638 4WD & LDR	
38HP	IN STOCK
2660 4WD & LDR	
60HP	IN STOCK
2660 CAB 4WD & LDR	
60HP	IN STOCK
2670 CAB 4WD & LDR	
70HP	IN STOCK

USED TRACTORS

IHC 826 92 HP	9,000
---------------	-------

USED ROUND BALERS

HESSTON 945 4X5	9,000
JOHN DEERE 375 5X4	3,500
HESSTON 560 5X6	2,000
NH 850 5X5	1,500
JD 336 SQ BALER	4,000

USED MOWER / CONDITIONER

MF 1363 10FT M/C	17,500
JD 835 11.5 FT CENTER PIVOT	11,500

USED MISC.

VERMEER 8 WHEEL RAKE	1,750
M&W 8 WHEEL RAKE	1,750

Marshfield Machinery Inc.
 222 E. Madison
 Marshfield, MO 65706
 417-859-2117
 www.marshfieldmachinery.com

Starnes Auto LLC
 22115 Rt. 66 • Lebanon, MO 65536
 417.718.2707 Cell
 417.588.3159 Office
 www.starnesauto.com

2005 BUICK LACROSSE
 GOLD, VIN#7449, 89,XXX MILES \$4,950

2006 CHEVY SILVERADO 4DR 4WD
 MAROON, VIN#8612, 142,XXX MILES ... \$8,500

2008 FORD ESCAPE
 GRAY, VIN#8387, 148,XXX MILES \$4,850

2011 CADILLAC SRX
 BLACK, VIN#1300, 82,XXX MILES \$11,200

2011 CHEVY EQUINOX LT
 MAROON, VIN#6071, 153,XXX MILES ... \$6,800

2012 CADILLAC SRX PERFORMANCE
 BLACK, VIN#6491, 126,XXX MILES \$9,200

2013 CHEVY CAPTIVA
 SILVER, VIN#9033, 126,XXX MILES \$7,200

2013 CHEVY EQUINOX
 BLACK, VIN#8234, 170,XXX MILES \$7,200

2014 GMC TERRAIN DENALI
 CHARCOAL, VIN#6925, 108,XXX MILES \$12,500

2016 CHEVY TRAVERSE
 SILVER, 69,XXX MILES \$17,500

WE DO ALIGNMENTS!

THANK YOU

to all of our loyal customers

We look forward to seeing you in 2022!

Metal Roofs Designed To Look Great On Your Home!



Ask About Our Quick Service.
Over **20** Colors and Several Styles To Choose!



HEAVY 29 Ga. METAL # 1

**Limited LIFETIME WARRANTY
29 Ga. & 26 Ga. Painted**

CUT TO LENGTH PANELS

**Galvalume Metal Unpainted 25 Year Warranty
#1 Standard Panels, 29 Ga.**

Good Quality Quick Service

NEXT BUSINESS DAY SERVICE
Call for details.

**DELUXE BUILDING PACKAGES AVAILABLE
CALL TODAY TO GET YOUR QUOTE!
877-556-8855**



24x40x10 • 24x32x10 • 30x40x10 • 30x40x12 • 40x60x12

All Buildings Quoted Have #2 Lumber And #1 Galvalume Or Limited Lifetime Painted Metal

All Buildings Are Heavy 29 Ga. Metal, Three 2"x6" T&G Splashboards, All Poles 5"x5" Or Larger, CCA Treated, Fully Trimmed With One 3'x6' Walk-Through Door & One Large Sliding Door.

*Plus Tax, Labor & Delivery Available On All Building Packages.
Prices may vary due to local code restrictions.*



BYLER BUILDING SUPPLY, LLC



2 1/2 MILES EAST OF SEYMOUR ON 60, 1/4 MILE NORTH AT AUTO SALVAGE WWW.BYLERSUPPLY.COM

877-556-8855 MON.-FRI. 7:30-5 SAT. 8-12 FAX NO. 417-935-2995 417-771-3100

VISIT US AT WWW.BYLERSUPPLY.COM

IHC 1086 DIESEL TRACTOR: 130 hp. Cab & air. \$13,000. 573-765-4406. Richland.

JOHN DEERE 4230 DIESEL TRACTOR: Cab & air, 100 h.p. Quonol Range. \$13,500. 573-765-4406. Richland.

OMAR'S LOGGING
& Dozers

⇒ Oak & Walnut
⇒ Excellent Prices
Amish Owned & Operated



LEAVE MESSAGE: 417-741-0440
Hartville & Surrounding Areas

LAND PRIDE PLAINSMAN 15FT HYD FOLD BRUSHEUTTE \$6800. 573-765-4406. Richland.

FORD 4610 DIESEL TRACTOR: Canopy 52 h.p. with Brushhog loader, 2000 hrs. \$12,500. 573-765-4406. Richland.

IHC HOUGH 65 SERIES: Articulating 4-wheel drive loader. \$9,750. 573-765-4406. Richland.

HISTORY OF ST. ALBANS, MO. : H.B. \$20. 417-532-2045. (leave message and phone number). Lebanon.

WEATHERED BARN WOOD SIDING: 10" wide. 573-729-7226. www.pineridgerustic.com Salem.

RED BARN FIREARMS, LLC

- GUNS • AMMO
- RELOADING SUPPLIES
- DEPT. OF CONSERVATION HUNTING & FISHING LICENSES



417-818-6317 • 1101 N. HWY 13 COLLINS, MO 64738

LOG SIDING: 2X8 Pine/Western Cedar www.pineridgerustic.com 573-729-7226. Salem.

USED MOBILE HOMES: Call David at VILLA HOMES IN ROLLA 573-578-8072. Rolla.

WANTED TO BUY DODGE DIESEL TRUCK: Or Toyota Tacoma. Also, buying antique cars. 870-324-1154. Ash Flat.

BUYING MOBILE HOMES: Call David at VILLA HOMES IN ROLLA 573-578-8072. Rolla.

WANTED TO BUY ANTIQUE CARS: Convertible, Corvettes, unrestored, motors, parts considered. 870-324-1154. Ash Flat.

0% for 4 Years
HEATMOR
Outdoor Wood Furnace
as low as **\$208** per month



HEATMOR MIDWEST
Licking, MO 65542 • 573-674-2962

THE FIELD GUIDE TO WILD FLOWERS, 223 pages, based on Field Book of American Wild Flowers by F. Schuyler Mathews, \$6.50. 417-532-2045. (Leave message and phone number). Lebanon.

STOCK MOBILE HOMES AVAILABLE: We gottem, single and double, 3 and 4 bedroom! Call Tuffy 573-657-2176. amegamobilehomes.com

NEW GREENHOUSE
OPENING MARCH 10

Located in the Grovespring / Hartville area. Only 30 minutes from Lebanon, Mansfield, Marshfield or Mountain Grove.

GARDEN SEEDS, HERBS & VEGETABLE PLANTS

Big selection of flowers in hanging baskets or as bedding plants.

Bring your own planters and we can help you fill them, including the potting soil.




HIGHPOINT GREENHOUSE

417-741-2198 Isaac & Annie Stoltzfus
9313 Warner Rd., Hartville Mo. 65667
MON - SAT: 9:00AM till Sunset SUN: Closed

PLAD PANTRY

DISCOUNT & SURPLUS FOODS FRESH PRODUCE LLC
417-532-4700



Three Meat Omelet Rounds	\$3.99 12 - 4.6 oz.
Roasted Garlic Chicken Smoked Sausage...	\$1.79 13 oz.
Pomegranate Blueberry 100% Juice...	\$3.75 6 - 12 fl. oz.
Ground Turkey	\$1.99 20.8 oz.
Instant Mashed Potato Flakes.....	\$1.19 13 oz.

1571 State Hwy 64 • Tunas, MO 65764
Hours: 8:30 a.m. to 5:30 p.m. • Closed Wed. & Sun.



TRUCKERS & LOGGERS: Keep your Diesel engines running smooth this winter by adding Diesel plus. Extends the life of injectors and fuel pumps. For more info. Call 417-241-3653.

WANTED: Old Pinball Machines and Juke Boxes. 573-424-7200.

Can You Dig It? We Can!

Specializing in Residential utility ditches for waterlines, electric lines, sewer line, etc.

T Campbell And Sons Excavating
417-559-9339 • Lebanon

Land Pride
www.landpride.com

For Outstanding Products & Service

AGRI-ENTERPRISES

Getting Chores Done LAND PRIDE does that.

RB15 SERIES REAR BLADES 17-40 HP 60", 74", 84" Widths

- Cat. 1 Hitch
- 7 Forward angles; 5 Reverse angles
- 12" Offset left or right
- 14" Moldboard height
- 1/4" Moldboard thickness
- Landscape Rake adaptable
- Optional storage stand

1-1/2 Miles South Of Licking, MO On Hwy 63
573-674-2203 • 1-800-653-7152
www.agri-enterprises.com

AVAILABLE STOCK MOBILE HOMES: Immediately, double wide and single, 3 and 4 bedroom 573-499-9993 columbiadiscounthomes.com

BIRDS OF MISSOURI FIELD GUIDE: By Stan Tekiela, 182 pages, \$5. 417-532-2045. (Leave message and phone number). Lebanon.

CALUS LOGGING

20 YEARS EXPERIENCE

Buying Standing Timber
Walnut & Oak

Joe Calus, Owner
417-926-4606 • MTN. GROVE

CERTIFIED

FAINTING GOATS: Non-Jumping. Small Size Pet. Variety of colors & patterns. 100% pure bred. Check website www.greenacresvillage.com or text 573-216-7796 for more info. Lake of the Ozarks.

I BUY.....used mobile homes. Call or text 573-338-6250 or email GregS.CH@outlook.com

WINCHESTER MODEL 94: 30-30, lever action. \$1,200. 417-533-9484. Niangua.

QUALITY USED SADDLES WANTED: Will pay cash! George's Tack, Saddles & Feed. 573-346-7866. Camdenton.

CUSTOM SAW MILLING: 417-533-4607. 417-664-1195. Lebanon.

Buildings • Hunter's Cabins • Lawn Furniture

JAMCO BUILDERS

JAMCO Portable Buildings
800-688-2064 • 307 Enterprise Dr. • Seymour, MO • www.jamcobuilders.com

Rent To Own Plan

TRUE MODULARS: 30 to 60 day delivery available, 3 and 4 bedroom 573-657-7040 chateauhomes.net

DARDEN PROFESSIONAL TIMBER HARVESTING, BUYING STANDING TIMBER: Great prices, improve wildlife habitat and improve forest health. State Certified & Fully Insured! 573-247-4808 or 573-739-1122. Salem.

TINY HOMES: We gottem 573-881-3283

REGISTERED HEREFORD & ANGUS BULLS: Home raised, Some Show-Me Select Qualified. 573-701-7828. Belgrade.

THE HEART OF THE SPRING BOOK. A Bennett Spring Novel by Laura L. Valenti, 161 pages. \$6.50. 417-532-2045. (Leave message and phone number). Lebanon.

FIREARMS: Professional Repair, Restorations and Appraisals. Baron's Gunsmithing. 573-363-5801, Camdenton.

POOL TABLES: Installations, moves, recovers, repairs, accessories, etc. 573-646-1700.

NEW SCHWINN STINGRAY BICYCLE: Monkey Handlebars. Banana seat. Rear Racing Slick. \$145.00. 573-364-7465. Rolla.

KESSLING & SMITH FAMILY HISTORY BOOK OF WEBSTER COUNTY, MO: Also, Rader and Mace families. \$6.50. 417-532-2045. (Please leave message and phone number). Lebanon.

LIONEL TRAIN SET: Steam engine, tender, caboose and other car, track and transformer. \$195. 573-364-7465. Rolla.

GILSON LAWNMOWER: Triple paint in original color, needs motor and assembly. \$195. 573-364-7465. Rolla.

KITCHEN FAUCET MOEN: Single lever, sprayer, new cartridge. \$45 obo. 636-239-2695. Washington.

WE BUY HOMES & LAND FOR CASH!

Get a fast, no-obligation cash offer!

MID MO LAND CO LLC
CALL TODAY! 417-991-6445

HEALTHCARE MADE EASY

WE CAN HELP YOU NAVIGATE HEALTHCARE.GOV

Choices In Health & Life Insurance
Mike Eblen, Agent
417-532-3360
238 S. Jefferson Avenue Suite A, Lebanon



YOUR AD GOES HERE!

Add **YELLOW** Color For An Additional \$3 Per Reader Ad

All ads will include Phone Number (unless requested to be deleted by advertiser) and City Or Town, Phone Number with Area Code counts as one word. City or Town counts as one word.

RATE: 80¢ Per Word. All Classified Ads Require Payment Before Print.

(1) 80¢	(2) \$1.60	(3) \$2.40	(4) \$3.20
(5) \$4.00	(6) \$4.80	(7) \$5.60	(8) \$6.40
(9) \$7.20	(10) \$8.00	(11) \$8.80	(12) \$9.60
(13) \$10.40	(14) \$11.20	(15) \$12.00	(16) \$12.80
(17) \$13.60	(18) \$14.40	(19) \$15.20	(20) \$16.00
(21) \$16.80	(22) \$17.60	(23) \$18.40	(24) \$19.20
(25) \$20.00	(26) \$20.80	(27) \$21.60	(28) \$22.40
(29) \$23.20	(30) \$24.00	(31) \$24.80	(32) \$25.60
(33) \$26.40	(34) \$27.20	(35) \$28.00	(36) \$28.80
(37) \$29.60	(38) \$30.40	(39) \$31.20	(40) \$32.00

Place your Classified Ad TODAY!

417-532-9131 • 800-665-8875

Fax: 417-532-8140

Or Mail To: P.O. Box 192 • Lebanon, MO 65536

For your convenience we accept MasterCard, Visa, Discover or American Express



DEADLINE FOR CLASSIFIED ADS: FRIDAY 4:00PM!

Name _____

Address _____

City _____ Email _____

State _____ Zip Code _____ Phone _____

Ad Total \$ _____ X # Weeks _____ = Amount Enclosed \$ _____



Get more
done faster.

Z400 Gas powered 48" to 60" cutting widths

 **Kubota**. Together we do more.®

Get a great offer on class-leading speed*, ergonomic comfort and the exclusive Hydro-Gear ZT-3600 transmission.

\$0 DOWN 0% APR 36 MONTHS

VISIT US TODAY FOR THIS LIMITED-TIME OFFER

Quarles Supply

3251 S Springfield Ave
Bolivar, MO 65613
417-777-2391

KubotaUSA.com

*Claim is based on speeds published on company websites as of 11/08/2021 for the following 52" - 54" zero-turn models: Gravely Pro-Turn ZX, Scag Patriot, Exmark Radius S Series, Toro Titan HD 2000 Series, Hustler Fastrak SDX, John Deere ZTrak. © Kubota Tractor Corporation, 2022. \$0 Down, 0% A.P.R. financing for 36 months on purchases of select new Kubota Z400 Series equipment from participating dealers' in-stock inventory is available to qualified purchasers through Kubota Credit Corporation USA; subject to credit approval. Example: 36 monthly payments of \$27.78 per \$1,000 financed. Some exceptions apply. Offers expire 6/30/22. Terms subject to change. This material is for descriptive purposes only. Kubota disclaims all representations and warranties, express or implied, or any liability from the use of this material. For complete warranty, disclaimer, safety, incentive offer and product information, consult your Dealer or KubotaUSA.com.

2KBB03852_Z400_F1_3-1_0215