

FREE - TAKE ONE!

Vol. 28 No. 48

FEBRUARY 24, 2022

800-543-8271 • 800-665-8875

WEEKLY TRADER MAGAZINE



Find us on Facebook

@myweeklytrader
AUCTIONS PG. 12

VISIT OUR NEW WEBSITE! MYWEEKLYTRADER.COM

**You pull it,
we sell it...**

CHEAP!



Lebanon, MO

22395 Rt. 66

417-588-3555

Fax 417-588-8955



U★PULL★IT

SELF-SERVICE AUTO PARTS

We also have a large inventory
of used tires and be sure to check
out our used car lot!

Mon.-Fri. 8:00am-6:00pm • Sat. 8:00am-4:30pm

WWW.SSUPULLIT.COM

Located next to S&S Recycling.



For All Your Metal Recycling Needs

Lebanon, MO

22395 Rt. 66

417-588-3555

Fax 417-588-8955

Mtn. Grove, MO

8930 First Rd

417-926-3360

Fax 417-926-0180

Roll-off, Trailer, and
Mobile Crushing
Services Available

Monday-Friday 8:00am-4:30pm (Closed 12pm-1pm Lunch)
Saturday 8:00am-Noon

email: contact@ss-recycling.com

Buyer of all types of scrap metal.

Land

For Sale

Webster Co., Mo • 74 Acres +/-



- Located in Conway, Mo
- Hunters dream property with live water and income
- Level building site up on a ridge with electricity and a well on site
- Wildlife is abundant; whitetail deer, turkeys, small game, waterfowl, game fish
- State highway access



WHITETAIL PROPERTIES REAL ESTATE

HUNTING | RANCH | FARM | TIMBER

Brian Utecht | 417-766-5595

Brian.Utecht@whitetailproperties.com

WHITETAILPROPERTIES.COM

Missouri's Top Land Specialist in 2014, 2015, 2016, 2017, 2018, 2019 and 2020



**THE MOST COMPLETE
LINE-UP IN THE INDUSTRY**

Cutting widths from 36" to 104"



For Outstanding Products & Service

AGRI-ENTERPRISES

1-1/2 Miles South Of Licking, MO On Hwy 63

573-674-2203 • 1-800-653-7152 • www.agri-enterprises.com

HISTORY OF ST. ALBANS, MO. : H.B. \$20. 417-532-2045. (leave message and phone number). Lebanon.

AVAILABLE STOCK MOBILE


HOMES: Immediately, double wide and single, 3 and 4 bedroom 573-499-9993 columbiadiscounthomes.com

RUBBER & LEATHER BOOTS AND HIP WADERS. Men's 11, Women's 7, some insulated. \$15-\$40 obo. 636-239-2695. Washington.


WEATHERED BARN WOOD SIDING: 10" wide. 573-729-7226. www.pineridgerustic.com Salem.

LOG SIDING: 2X8 Pine/Western Cedar www.pineridgerustic.com 573-729-7226. Salem.

CERAMIC CANISTER SET: With cutting board that fits in kitchen counter top. Various species of ducks. Set \$40 obo. 636-239-2695. Washington.







**VOTED
#1 BEST
Preowned Car
Dealership**



TIM'S USED CARS

(573) 341-3828 • 1334 South Bishop (Hwy. 63) • Rolla, MO
Next to Hwy CC • www.tims-used-cars.com

 <p>2010 GMC 1500 SL Crew Cab, 4x4, 5.3 V8, Power Equipped Only \$12,800</p>	 <p>2014 JEEP GRAND CHEROKEE LAREDO 4x4, V6, Leather, 151,xxx Miles Only \$15,800</p>
 <p>2017 GMC SLE 1500 4x4, 4.3 V6, Power Equipped, 117,xxx Miles Only \$29,900</p>	 <p>2014 JEEP WRANGLER SAHARA UNLTD. 4x4, V6, Auto, Hard Top, Power Equipped, 100,xxx Miles Only \$29,500</p>

LARGE SELECTION OF CARS, TRUCKS, SUVs & VANS!

RED BARN FIREARMS, LLC

- GUNS • AMMO
- RELOADING SUPPLIES
- DEPT. OF CONSERVATION HUNTING & FISHING LICENSES



417-818-6317 • 1101 N. HWY 13 COLLINS, MO 64738

USED MOBILE HOMES: Call David at VILLA HOMES IN ROLLA 573-578-8072. Rolla.

THE FIELD GUIDE TO WILD FLOWERS, 223 pages, based on Field Book of American Wild Flowers by F. Schuyler Mathews, \$6.50. 417-532-2045. (Leave message and phone number). Lebanon.

BUYING MOBILE HOMES: Call David at VILLA HOMES IN ROLLA 573-578-8072. Rolla.

WANTED TO BUY ANTIQUE CARS: Convertible, Corvettes, unrestored, motors, parts considered. 870-324-1154. Ash Flat.

HEALTHCARE MADE EASY
 WE CAN HELP YOU NAVIGATE HEALTHCARE.GOV

Choices In Health & Life Insurance
 Mike Eblen, Agent
417-532-3360
 238 S. Jefferson Avenue Suite A, Lebanon

WANTED TO BUY DODGE DIESEL TRUCK: Or Toyota Tacoma. Also, buying antique cars. 870-324-1154. Ash Flat.

WANTED: Old Pinball Machines and Juke Boxes. 573-424-7200.

STOCK MOBILE HOMES AVAILABLE: We gottem, single and double, 3 and 4 bedroom! Call Tuffy 573-657-2176. amegamobilehomes.com

TRUE MODULARS: 30 to 60 day delivery available, 3 and 4 bedroom 573-657-7040 chateauhomes.net

I BUY.....used mobile homes. Call or text 573-338-6250 or email GregS.CH@outlook.com

REGISTERED HEREFORD & ANGUS BULLS: Home raised, Some Show-Me Select Qualified. 573-701-7828. Belgrade.

CYCLOPS & PARMAK CHARGERS

- Deli Sandwiches
- Glass Bottle Milk
- Homemade Yogurt
- Cheese & Spices
- Homemade Bread
- Bulk Foods



- Hydraulic Hoses
- Johnson & Ritchie
- Electric Fence Supplies
- Waterers
- Stay-Tuff Fence
- Gates & Panels



VISIT YOUR ONE STOP SHOP FARMERS QUIK STOP
 5 mi. East of Lebanon on Hwy 32 • 417-991-1938

OUTDOOR FORCED AIR WOOD FURNACE: Fire proof, insulated, thermostatically controlled. Been made since 1986. Made by Harmons Heating & Cooling. 573-743-6943 or 573-247-5585. Salem.

TINY HOMES: We gottem 573-881-3283

LOOKING BACK WITH AN OLD TIMER BOOK: by Roy G. Mansfield as told to Eula York, of the Osage River Valley and the people who lived there before Bagnell Dam was built. Out of print book, \$20. Many old photos. 417-532-2045. (Leave message and phone number). Lebanon.

OFFICIAL TRACTOR OF TOUGH™

INTRODUCING THE ALL-NEW 5100 SERIES



NEW MAHINDRA TRACTORS

1626 4WD & LDR 26HP	IN STOCK
2660 4WD & LDR 60HP	IN STOCK
2660 CAB 4WD & LDR 60HP	IN STOCK
2670 CAB 4WD & LDR 70HP	IN STOCK

USED TRACTORS

MF 1734E 4WD LDR 34HP	16,500
IHC 826 92 HP	9,000

USED ROUND BALERS

HESSTON 945 4X5	9,000
JOHN DEERE 375 5X4	3,500
HESSTON 560 5X6	2,000
NH 850 5X5	1,500
JD 336 SQ BALER	4,000

USED MOWER / CONDITIONER

MF 1363 10FT M/C	17,500
JD 835 11.5 FT CENTER PIVOT	11,500

USED MISC.

HAYBUSTER 107C	
NOTILL	17,500
VERMEER 8 WHEEL RAKE	1,750
M&W 8WHEEL RAKE	1,750

Marshfield Machinery Inc.
 222 E. Madison • Marshfield, MO 65706
 417-859-2117 • www.marshfieldmachinery.com

*2018 data including all Mahindra group brand sales. MahindraUSA.com © 2020 Mahindra USA Inc.

Mahindra Rise.

FIREARMS: Professional Repair, Restorations and Appraisals. Baron's Gunsmithing. 573-363-5801, Camdenton.

NEW SCHWINN STINGRAY BICYCLE: Monkey Handlebars. Banana seat. Rear Racing Slick. \$145.00. 573-364-7465. Rolla.

WINCHESTER MODEL 94: 30-30, lever action. \$1,200. 417-533-9484. Niangua.

ORGANIC CHICKEN LITTER/HIGH CALCIUM LIME: Delivered trailer loads, \$120/T. Spreader truck available. 800-807-9612.

QUALITY USED SADDLES WANTED: Will pay cash! George's Tack, Saddles & Feed. 573-346-7866. Camdenton.

POOL TABLES: Installations, moves, recovers, repairs, accessories, etc. 573-646-1700.



Call to Order
417-993-3017

Meadowview Dutch Market

Sale Dates February 23rd 2022 to
March 1st, 2022 while supplies last!

DELI SPECIAL

Discount & Surplus Groceries • Prices Subject to Stock on Hand

BROWN SUGAR HAM REG. \$5.95 LB. SALE \$5.45 LB.
SHARP CHEDDAR CHEESE REG. \$5.59 LB. SALE \$5.19 LB.

TRY our Fresh Homemade DELI Sandwiches: **TURKEY, HAM, ROAST BEEF, ITALIAN, BLT'S, PULLED PORK AND BLT PULLED PORK (MADE YOUR WAY)! COME IN OR CALL to order! ALSO Custom Deli trays! Veggie OR FRESH Meat-N-Cheese!**



ALL CANNED BEANS

SALE! Pinto, Garbanzo, Yellow Eye and Baked

BUY ONE GET ONE FREE



HICKORY HAM AND MONTEREY JACK PLATE

50¢ 3.3 OZ. **OR** **\$2⁹⁹** A CASE

Jimmy Dean Fully Cooked Sausage Patties **SALE!**
99¢ LB. 30 LB. CASE



Covered Wagon Bacon
\$2⁹⁰ LB. 10 LB. CASE



Shredded Hash Browns
99¢ LB.



Jamestown Pork Sausage **SALE!**
89¢ 16 OZ.



Jimmy Dean Fully Cooked Sausage Links **SALE!**
99¢ LB. 30 LB. CASE



Farmer John Bacon **SALE!**
59¢ 3 OZ.

MEADOWVIEW DUTCH MARKET
417-993-3017 Hours: Mon-Thurs 8-5pm
Fri 8-6pm • Sat 8-5pm
23 Miles West on Hwy 64 • Right on T Hwy
9 miles • Left on E Hwy 1 mile on Left

NOW ACCEPTING CREDIT, DEBIT CARDS & EBT

DUTCH COUNTRY STORE, LLC
573-378-4395
Hours: Mon-Thurs 8-5pm
Fri 8-6pm • Sat 8-5pm
5 miles East of Versailles off Hwy C on Kelsay Road

CUSTOM SAW MILLING: 417-533-4607.
417-664-1195. Lebanon.

BIRDS OF MISSOURI FIELD GUIDE:
By Stan Tekiela, 182 pages, \$5. 417-532-2045. (Leave message and phone number).
Lebanon.

LIONEL TRAIN SET: Steam engine, tender, caboose and other car, track and transformer. \$195. 573-364-7465. Rolla.

COMMERCIAL ROOFING
5795 Highway 5
Hartville, MO 65667
Roof Restoration Specialists
Why replace? Extend the life of your existing roof.
(417) 241-3653
www.dncoatings.com

EARN \$60,000/YEAR PART-TIME: In the livestock or farm equipment appraisal business. Agricultural background required. Home study course available. 800-488-7570 or www.amagappraisers.com

TRUCKERS & LOGGERS: Keep your Diesel engines running smooth this winter by adding Diesel plus. Extends the life of injectors and fuel pumps. For more info. Call 417-241-3653.

OMAR'S LOGGING & DOZENS
⇒ Oak & Walnut
⇒ Excellent Prices
Amish Owned & Operated
LEAVE MESSAGE: 417-741-0440
Hartville & Surrounding Areas

KESSLING & SMITH FAMILY HISTORY BOOK OF WEBSTER COUNTY, MO: Also, Rader and Mace families. \$6.50. 417-532-2045. (Please leave message and phone number). Lebanon.

FAINTING GOAT BABIES ON BOARD: 1ST kids just arrived. All colors & patterns. 100% pure bred. Check website www.greenacresvillage.com or text 573-216-7796 for more info. Lake of the Ozarks.

Wright Spray Foam Insulators, LLC
Commercial & Residential
Call for FREE Estimates!
Ervin Gingerich 417-926-2052
B. Eli Yoder 417-746-4932

FIREPLACE LOG GRATE: 28" in width. \$25 obo. 636-239-2695. Washington.

4 USED TIRES FOR SALE:
31X10.50X15, 6-ply, excellent trailer or implement tires. \$60. 573-743-6257. Steelville.

ROUND GLASS DINING TABLE: 54" wide, 4 chairs, \$50. 417-532-2344. Lebanon.

WANTED: Transmission, automatic, 1957 Chevy car, cash paid. 573-636-8000. Jefferson City.

GILSON LAWNMOWER: Triple paint in original color, needs motor and assembly. \$195. 573-364-7465. Rolla.

HEARTH CRAFT GLASS BI-FOLD FIRE PLACE DOORS: Antique brass. \$200 obo. 636-239-2695. Washington.

STORY & PICTURES BOOK OF OLD LINN CREEK: Haha Tonka and Camden County, by T. Victor Jeffries, 72 pages. \$5.00 postpaid. (417)532-2045. (Leave message and phone number). Lebanon.

KITCHEN FAUCET MOEN: Single lever, sprayer, new cartridge. \$45 obo. 636-239-2695. Washington.

MISSOURI GUN CO LLC



Your Reloading Headquarters for Southern Missouri.

W, Th, F: 10am-6pm
Sat: 10am-2pm
Sun, M, T: CLOSED

BUY. SELL. TRADE.

516 Ozark St., Cabool, Mo. • 417-962-2666

KENMORE 27" BUILT-IN SINGLE OVEN: Self-cleaning, black, \$100 or best offer. 636-239-2695. Washington.

MINI FARM 18.8 M/L SURVEYED ACRES: 3-bedroom ranch, shop. St. Francis County. Best Offer. Details Call 417-255-6640.

I BUY GRAIN BINS: All sizes and conditions. Price depends on size and condition. Please call 573-280-5638. Sunrise Beach.

M FARMALL: With SM motor, 417-349-2908. Cabool.

0% for 4 Years



HEATMOR Outdoor Wood Furnace

as low as **\$208** per month as

HEATMOR MIDWEST

Licking, MO 65542 • 573-674-2962

350 FARMALL: Runs good, TA works. 417-349-2908. Cabool.

SMALL SQUARE BALES: Good quality, \$5.50 per bale. 417-345-5634. Phillipsburg.

WOODED ACREAGE: Paved road, Collins MO, 5 acres m/l. \$25,000. Collins.

5 BLUE CORNFLOWER CORNINGWARE BAKING BOWLS: With lids, no chips. \$60. 417-532-2344. Lebanon.

CORELLE DISHES: different patterns, 48 piece set for \$40. 417-532-2344. Lebanon.

AUSTRALIAN SHEPPERD PUPPIES: 573-202-3132.

MOBILE HOME TIRE AND WHEELS: \$50 each. Call Charlie at 573-786-4003. Steelville.

NEW POWERFUL MINI CROSSBOW: \$100. 573-327-9068. Desloge.

2 NEW DVD PLAYERS: \$90 for both. 573-327-9068. Desloge.

RUGER PC9MM CARBINE: With scope, extra mag, loader, bought new. \$650. 417-844-43149. Springfield.

Buildings • Hunter's Cabins • Lawn Furniture



JAMCO BUILDERS

JAMCO Portable Buildings

800-688-2064 • 307 Enterprise Dr. • Seymour, MO • www.jamcobuilders.com

Rent To Own Plan

OLD HANDMADE FULL-SIZE QUILTS: \$50 each. 417-532-6561. Phillipsburg.

VINTAGE TWIN THRILLER NANCY DREW BOOKS: 17 editions \$50 for all. 417-532-6561. Phillipsburg.

FIDDLE, BOW & CASE: Copy of a Stradivarius, \$200. 573-764-4435. Gerald.

MEDINA FIDDLE, BOW & CASE: \$75. 573-764-4435. Gerald.

PIG FEED 450LB: \$200 firm. 573-205-9401. Belle.

TOTE FULL OF AUNT JEMIMA STUFF: \$200 for all. 573-327-9068. Desloge.

28X52 AMISH BUILT 1996 DUTCH HOME: One owner, 3 bedroom, 2 bath, utility room, vinyl siding, new architectural shingles, new carpet & pad, 2x6 walls, central air, big stone fireplace. This home is in perfect condition. Everything guaranteed. Includes new vinyl skirting. Free Delivery and set up. \$49,995. Call Charlie at 573-786-4003. Hwy 8 & Hwy Y. Steelville.

WTB SMALL HORSE WALKER: Good or bad shape. 573-953-7589. Dixon.

Pine Ridge Rustic Log Home Building Supplies

Services Offered!

- Installation
- Pre-finishing available on interior & exterior
- Dealer for exterior stains

www.pineridgerustic.com



- Log Siding
- Beveled Siding
- Car Siding • Red Cedar
- Western Cedar • Pine

523 CR 2410 • Salem, MO 65560 • Ph: 573-729-7226

BIG HORN 16" SADDLE: Dark leather, excellent sharp, \$200 Firm. 573-205-9401. Belle.

BRAND NEW AREA RUGS: Good on ceramic and wood flooring. White fluffy with gray squares. \$125. Call between 8 am-8pm. 417-664-4278. Lebanon.

AUSTRALIAN SHEPHERD PUPPIES: 12 Weeks Old, UTDI shots, Will trade for farm animals or rehoming fee. 417-967-6493. Roby.

DARDEN PROFESSIONAL TIMBER HARVESTING, BUYING STANDING TIMBER: Great prices, improve wildlife habitat and improve forest health. State Certified & Fully Insured! 573-247-4808 or 573-739-1122. Salem.

WTB GOOD SADDLE HORSE: 573-953-7589. Dixon.

PICKUP TRUCK BEDLINER: Standard size, fits Ford F150-F350. \$40. 314-303-7857. Cedar Hill.



*Say "Goodbye to high material/building prices!!"
We manufacture it all in house.*

Metal Roofing
Building In A Box
-Shop Kits-



Portable Sheds
10x12s from \$2,250
12x16s from \$2,995

**Rent To Own
available**

Overmanmetal.com ★ Buildinginabox.org

40 year warranty metal **SPECIAL:**
****Charcoal- \$2.85 per linear ft./3ft wide/29 Gauge****

Bring in a competitor's quote and if we can't beat it by 10% on the first try, we will buy you lunch at our deli inside the store!

★ **1606 Chicory Rd. Rogersville MO.** ★
417-753-8030

1100 Pace Rd. Pocahontas, AR - 202 S. Prigmor Joplin, MO

WE'RE NOT JUST IN PRINT

Visit the newly re-designed

WWW.MYWEEKLYTRADER.COM

CHEVY CERTIFIED SERVICE SPRING TIRE EVENT

\$200 MAIL-IN REBATE!
ON A SET OF FOUR TIRES FROM BRIDGESTONE, CONTINENTAL, HOFFERER, OR MICHELIN. SEE BELL'S NEED PURCHASE WITH A GM OR BUYPower CARD.

LOWE CHEVROLET
"We're Easy to Deal With"
View our Inventory -



WEEKLY TRADER MAGAZINE

Serving Central Missouri in 34 counties!

417-532-9131
100 Commercial Street
Lebanon, MO 65536
myweeklytrader

Auctions Auto Tractors Real Estate ATVs / Motorcycles Building Supplies Miscellaneous E-Editions

This week's ads

THIS WEEK'S CLASSIFIEDS

POOL TABLES:
Installations, moves, covers, repairs, accessories, etc. 573-646-1700.

weathered BARN WOOD SIDING: 8' & 10' wide. 573-729-7226.
www.pineridgenatic.com

VEHICLES: 1927-1991
www.gohheartland.com
417-343-6354.

CHILITE SX 318: 18 ft fish cutter, bought new 19, still under warranty, 17,750/obo. Norwood 417-349-0084.

WANTED STANDING TIMBER: Butler Logging. 417-848-9323.

ROD AND REELS: fishing season is coming, \$5 and up. Conway, 417-589-8200.

1989 NISSAN TRUCK: Runs but needs clutch and body work. \$675. Lebanon 573-455-4100.

SAVAGE MODEL NO. 270WN: with Leupold scope, \$375. Remington Model 770 with scope, \$500. obo. 417-679-4355.

STOCK TRAILER: 1983 Goosz, goose-neck, 24', new floor. Four new 10" truck tires. \$2450. Lebanon (417)664-2198.

QUALITY REPLACEMENT BOWS: COW, CALF PAIRS, BREED HEIFERS AND BREEDING BULLS. 791-1111

BITTERSWEET COUNTRY

FEATURED ADVERTISER

Sakelaris Ford Lincoln, Where the Customer is Always #1!
Come See Us at Our NEW LOCATION!

ALL-NEW Super Clean, Safe Facility at 1621 Martin Springs Drive in Rolla, MO

Get COVID-19 Relief On A New Ford Vehicle!

BUILT TO LEND A HAND **Ford** POWER

NEW VEHICLE PURCHASES
3 MONTHS' DEFERRED 3 MONTHS PAID! 6 MONTHS RELIEF FOR PEACE OF MIND
(Qualified Buyer's Financed with Ford Credit)

ON SELECT NEW 2019, 2020 & 2021 FORD VEHICLES.

Limited Supply. Limited Time. Don't Miss Out On This Opportunity!

0% APR for 72 mos.
Ford Credit Financing for Qualified Buyers PLUS: Defer Three Payments* on Select New 2020 Ford Vehicles

ALSO Available on Select New Ford Vehicles: \$500 Bonus Cash of MSRP*

0% APR for 84 mos.
Ford Credit Financing for Qualified Buyers PLUS: Defer Three Payments* on Select New 2019 Ford Vehicles

1 WE ARE KW
KELLERWILLIAMS.

We are the **NUMBER ONE** real estate company in the United States!

AMANDA HOUGH
C:417-664-1113
O:417-883-4900
609 W. Elm - Suite 8
Lebanon, MO

Each office is independently owned & operated.

MORE PRINT ADS

MAKING STRIDES AGAINST CANCER

Starnes Auto LLC
22115 Rt. 66
Lebanon, MO 65516
417-778-2757
417-888-1111

2000 FORD RANGER \$4,800
2003 GMC ENVOY SLT \$4,900
2008 CHEVY MALIBU \$2,900

ALL OF OUR FOREST RIVER VIKINGS

THE ULTIMATE WOOD HEAT

Auto Bank Packages

2010 Viking 1570 \$14,911
2010 Viking 17358

Weight Space Room
Hessellman, LLC
417-532-9131

Diagnostic
Auto Body & Paint Repair
Glass Repair
Used Car Sales & More

GET STARTED

Starnes
Auto Body 417-588-3159

MAKING STRIDES AGAINST CANCER

October 22, 2020

View this issue
Browse other issues

Classifieds at your fingertips

View ads from local businesses

Every display ad is available online

View the entire magazine online

WEEKLY TRADER MAGAZINE

417-532-9131
www.myweeklytrader.com

HORSEMAN MAGAZINES: Some as old as the 1940's. Information and Articles of all kinds about horses and horse related things. \$2.00 each 573-364-1779. Rolla.

CABLE PULLING JAW GRIP: Klein 1684-5, excellent condition. \$150. 314-303-7857. Cedar Hill.

GM 1/2 TON 4-WHEEL DRIVE FRONT AXEL HOUSING: With 3.07 gears. Fits a 77 to 87. \$80. 314-303-7857. Cedar Hill.

DUMP TRUCK WANTED: Older single axle. 573-465-1378. Rolla.

2002 F150: 4wd, automatic, power, extended cab, 180,000 miles. \$6,800. 314-972-2903. Mineral Point.

1965 FORD 1 TON TRUCK: 12' flat bed, six cyl, runs well, \$3,500. 1-573-729-0272. Salem.

1970'S MILLER BIG D4 DIESEL ARC WELDER: With custom trailer. \$6,500. 1-573-729-0272. Salem.

GERMAN SHEPHERD PUPPIES: 3 weeks, 2 males, 2 females. 417-733-7062. Niangua.

MOSBERG PATRIOT 6.5 CREEDMORE: Dead ringer scope, new in the box with 120 rounds ammo. \$650. 417-241-9166. Grovespring.

FOR SALE MASSEY FURGESON: With bucket loader. 573-759-7268. Dixon.

FISHING SEASONS COMING: Get your rod and reels, \$5 and up. 417-589-8200. Conway.

5 MONTH OLD CHIHUAHUA PUPPIES: Male & female, UTD shots, Call for pricing. 417-250-0986 or 417-349-6076. Mtn. Grove.

KENT

Energilass EcoTub
Biodegradable Container
200lb EcoTub

Energilass
250lb

Farm Dog Feed ONLY \$18/Bag!!
While supplies last

Portable Feed Bins Ready For Your Farm!

Stocked & Ready for all your Livestock Feed Needs!

"DOING BUSINESS ON OUR WORD AND A HAND SHAKE"
Located in the Heart of the Amish Mennonite Community!
417-345-8600 • 19 Prairie Lane, Buffalo

BUILT ON TRUST
EST. 1927

Kropf Feeds

kentfeeds.com

REGISTERED POLLED HEREFORD BULLS FOR SALE: Ready to go to work. 417-259-0588. Hartville.

TOOLBOX WEATHER GUARD DEFENDER SERIES: Like new, across bed, bright extruded, aluminum, 61 inches outside, 51 inches inside, 18 inches high, keys, \$300. (cost \$520 Home Depot). 417-362-0073. Willow Springs.

L3901 KUBOTA 4WD TRACTOR WITH LOADER: 38hp, hydrostat transmission. \$22,900. 417-270-1505. West Plains.

VICON 10FT. 3-POINT DISK MOWER: \$2,650. 573-765-4406. Richland.

120 2ND & 3RD PERIOD COWS: 3 to 7 year old, 1250 to 1300 lbs, dewormed, vaccinated, pregnancy checked, with trucking available. Will sell any number. 660-619-5190. Otterville.

THE HEART OF THE SPRING BOOK. A Bennett Spring Novel by Laura L. Valenti, 161 pages. \$6.50. 417-532-2045. (Leave message and phone number). Lebanon.

AKC REGISTERED GERMAN SHORTHAI R PUPPIES: 14 weeks old. \$150. 417-838-3109. Niangua.

LOOKING TO BUY CUB TRACTOR: 573-759-7268. Dixon.

RUGER PC9MM CARBINE: With scope, extra mag, loader, bought new. \$650. 417-844-4319. Springfield.

ATHENS 8FT. OFFSET DISK: \$3,500. 573-765-4406. Richland.

IHC 10FT. WHEEL DISK: \$1,800. 573-765-4406. Richland.

JOHN DEERE 310C DIESEL BACKHOE LOADER: Runs nice. \$11,500. 573-765-4406. Richland.

750 GAL. PASTURE SPRAYER: Tandon axle, single jot, hyd pump. \$2,300. 573-765-4406. Richland.

JOHN DEERE 2950 DIESEL TRACTOR:
Cab & cold air, 85 h.p. 4,500 hrs. \$28,000.
573-765-4406. Richland.

JOHN DEERE 566 ROUND BALER:
Monitor, kicker. \$5,200. 573-765-4406.
Richland.

FORD 5600 DIESEL TRACTOR:
60hp. Runs nice. \$7,850. 573-765-4406.
Richland.

IHC 1086 DIESEL TRACTOR: 130
hp. Cab & air. \$13,000. 573-765-4406.
Richland.

KUSTER LOGGING
**BUYER of Standing
Timber
Oak and Walnut**
Dozing Now Available
417-259-0047
References Available



JOHN DEERE 460 ROUND BALER:
Monitor, kicker, net wrap, wide pickup,
8700 bales, nice. \$28,500. 573-765-4406.
Richland.

JOHN DEERE 4230 DIESEL TRACTOR:
Cab & air, 100 h.p. Qunol Range. \$13,500.
573-765-4406. Richland.

FORD 4610 DIESEL TRACTOR: Canopy
52 h.p. with Brushhog loader, 2000 hrs.
\$12,500. 573-765-4406. Richland.

IHC HOUGH 65 SERIES: Articulating
4-wheel drive loader. \$9,750. 573-765-4406.
Richland.

JOHN DEERE 567 ROUND BALER:
Monitor, kicker, net wrap. \$9,650. 573-765-
4406. Richland.

**HISTORY OF ST. ALBANS, MO. : H.B.
\$20. 417-532-2045. (leave message and
phone number). Lebanon.**

**WEATHERED BARN WOOD
SIDING:** 10" wide. 573-729-7226. www.pineriderustic.com Salem.

LOG SIDING: 2X8 Pine/Western Cedar
www.pineriderustic.com 573-729-7226.
Salem.

USED MOBILE HOMES: Call David at
VILLA HOMES IN ROLLA 573-578-8072.
Rolla.

BUYING MOBILE HOMES: Call David at
VILLA HOMES IN ROLLA 573-578-8072.
Rolla.

WANTED TO BUY ANTIQUE CARS:
Convertible, Corvettes, unrestored, motors,
parts considered. 870-324-1154. Ash Flat.

**WANTED TO BUY DODGE DIESEL
TRUCK:** Or Toyota Tacoma. Also, buying
antique cars. 870-324-1154. Ash Flat.

**VINTAGE TWIN THRILLER NANCY
DREW BOOKS:** 17 editions \$50 for all.
417-532-6561. Phillipsburg.

**THE FIELD GUIDE TO WILD FLOW-
ERS, 223 pages, based on Field Book of
American Wild Flowers by F. Schuyler
Mathews, \$6.50. 417-532-2045. (Leave
message and phone number). Lebanon.**

STOCK MOBILE HOMES AVAILABLE:
We gottem, single and double, 3 and 4
bedroom! Call Tuffy 573-657-2176.
amegamobilehomes.com

**AVAILABLE STOCK MOBILE
HOMES:** Immediately, double wide and
single, 3 and 4 bedroom 573-499-9993
columbiadiscountshomes.com

SMALL ENGINE REPAIR SHOP MECHANIC FULL TIME

C&C Farm and Home Supply #150
1680 West Elm • Lebanon, MO 65536

C&C Farm and Home, your family owned
Farm and Home store since 1970, is looking
for a *Small Engine Repair Shop Mechanic*
to join our team.

What we expect:

- Successful candidates must be experienced in 2 and 4 cycle small engine diagnostics, maintenance, and repair
- Experience in chainsaw and lawn mower blade sharpening
- Great customer service skills
- Highly organized, self-directed, and motivated
- Basic computer knowledge
- Parts ordering and shop maintenance

What you can expect:

- Access to company health insurance plan
- Paid vacation and holidays
- Employee merchandise discount program
- Retirement savings program

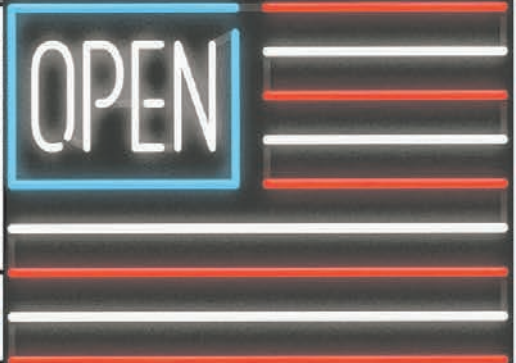


Apply in person at: 1680 West Elm,
Lebanon, MO 65536 or email your resume to
lebanon@candcfarmandhome.com

Lebanon • 1680 W Elm • (417) 532-7158
Bolivar • 3260 S Springfield Ave • (417) 326-2436



WWW.CANDCFARMANDHOME.COM



Sale Ends February 28, 2022
 Seymour, Missouri 417-935-4201

Pole Barns & Post Framed Buildings!

Call for free quote, brochure & color chart.
 Other sizes also available.

23'x32'x10' \$7,870 Material Only \$9,420 Labor Included	23'x40'x10' \$9,000 Material Only \$10,935 Labor Included	30'x40'x10' \$11,150 Material Only \$13,670 Labor Included	40'x60'x12' \$19,875 Material Only \$25,275 Labor Included
---	--	---	---



NOBODY, BUT NOBODY BEATS OUR PRICES!!!

10 ft. Slider • Engineered Trusses 8' O.C. • 2x6 Treated Bottom Wrap • Screws • 2x10 Top Wrap • 2x4 Purlins • Full 29 Gauge Steel • Plus 3 ft. Entry Door with Lock
 OPTIONS: Sidewall Heights on all Buildings 10', 12', 14' & 16'. Overhead Garage Door. Skylights. Insulation. Wainscoting. Insulated Vinyl Windows. Cupolas. Labor Rates Slightly Higher over 50 Miles from Seymour. Call for YOUR FREE QUOTE TODAY!!!!

PAINTED WHITE, GREEN OR TAN METAL\$126.20	IN STOCK
10' - \$40.00 12' - \$48.00 16' - \$64.00	
MIX & MATCH METAL\$59.99	
8' - \$15.20 10' - \$19.00 12' - \$22.80	
GALVALUME METAL\$99.99	
10' - \$31.66 12' - \$38.00 16' - \$50.66	
GALVANIZED CORRUGATED METAL SOLD OUT!	
8' - \$9.84 10' - \$12.30 12' - \$14.75 16' - \$19.67	

40yr Painted Metal
Call

KNOTTY PINE DOORS
 Starting at
\$164.99

LP SMARTSIDE T-5 LAP B GRADE \$43.59/SQ

Car Siding!
 1x6 White Pine Siding **79¢** in ft
 1x8 White Pine Siding **\$1.05** in ft
 * 4 Profiles to choose from!
 Broken Bundles Add 10¢ Per Ft.

4x8 Sheeting
 Less than full units Add \$1 per sheet

3/8" Beaded Paneling	\$17.99
7/16" T111 Siding	\$23.99
Paneling	\$SOLD
1/2" Plywood	\$SOLD
3/4" Plywood	\$29.99
3/16 Pegboard	\$12.99

LOTS OF MATERIAL AVAILABLE FOR THOSE IN HOME PROJECTS!

REAL WOOD SIDING
2x6 Log Siding - 1.59¢ In ft
1x8 Beveled Cedar from- 79¢ In ft
T1-11 Siding from \$28.99

DECK PACKAGES
Materials Only

8x8.....	\$395.95	10x12.....	\$684.99
10x10.....	\$569.49	10x16.....	\$849.99
12x12.....	\$799.99	12x16.....	\$1069.99

NEW PACKAGE HOMES

2x6—16" on center-Exterior Stud Walls
 Residential Roof Trusses-2' on center
 4/12 pitch with 1' over hang
 40 year Painted Metal roofing in 20 Different Colors
 Profile Ridge Vent - Ventilated Ridge Cap
 Vinyl Center Vent Soffit
 Color Matched Metal Fascia & Gable Trim
 2 - 3' 6 Panel Entry Doors
 4 - 3'x4' Vinyl Insulated Windows

Shown with Available Options
 Your Choice of either:
 Stock 3/8" T111 Siding w/1x4 Pine Window & Door Trim - or -
 7/16" OSB & House Wrap ready for other finish options

ALL FIGURED FOR SUITABLE CUSTOMER SUPPLIED SLAB OR SUB-FLOOR

Price for Basic Materials Package (No Labor at this Time)

20x24(480 sq. ft.)	20x32(640 sq. ft.)	20x40(800 sq. ft.)	28x40(1120 sq. ft.)	28x48(1344 sq. ft.)
\$12,630	\$14,500	\$16,320	\$20,120	\$22,360

QUAKER Now Stocking Quaker Vinyl Windows

2030	\$ 135.99	3030	\$157.99
3040	\$173.99	3052	\$189.99
3040Twin	\$379.99	3052Twin	\$419.99



LUCKY DISCOUNT LUMBER
417-935-4201
 455 State Hwy C • Seymour MO 65746
 www.luckydiscountlumber.com



**UNUSUAL! Old Equipment! Primitives! Tractors!
Sawmills! Molasses Mill! HD Indus. Tools! REAL ESTATE!**

AUCTION!

Owner: Alan & Rebekah Wolthuis 417-926-3824
417-259-0648

Sat. February 26, 2022 - 10:00 A.M. SHARP!

ONE DAY! 2 LOCATIONS! Auction will begin at 10:00 a.m. SHARP, at the Ben Davis Store (Jct. of 38 & MM Hwy's (13 miles North of the East (Dun) exit of Mtn. Grove). At approx. 12:30 p.m. we will move to the farm, located 2 miles east of the Ben Davis Store on 38 Hwy. Watch for Kelly Auction Signs! Not responsible for accidents or loss of items. Two forms of I.D. Required.. Cash or Check only.

COMMERCIAL REAL ESTATE

Country Store - Groceries/Feed/Farm Supplies

- .81 acres m/l
- NICE! 75'x120' Steel Building w/ Concrete, Wired, Loading Docks, 2 large roll up doors.
- Store 30'x70' Store w/ Inventory!
- This commercial Real Estate is located at MM & 38 Hwy's. It is an established business for many decades in Ben Davis & Huggins community.
- Terms on Real Estate Auction: 10% down day and location of the auction. Balance due at closing within 30 days (on or before March 28, 2022). Property sells "as is, where is", no contingencies.
- Call Reg Kelly at 417-257-8385 for more info or questions.



TRACTORS & EQUIPMENT

- 1949 J.D. A, for parts - 1953 J.D. A w/ 45 F.E. Loader - 1950 MT JD Tractor Parts - J.D. 1955 for parts, model 50 - (2) J.D. 1950's B Tractor, parts - 1959 J.D. 630 Tractor, complete engine stuck - Farmall B Tractor - 1955 Model 70 diesel J.D. Tractor, runs! - J.D. 42 Combine - 24-I J.D. Square Baler - 3 Bottom IHC Plow - JCB Backhoe, Runs, but o transmission, 4x4 - 40 Model IHC Square Baler - 10' Finish Disc - 28' Gooseneck Trailer - Tractor grill for small frame Ford Tractor or IHC - David Brown walk behind Tractor, has cycle mower & cultivator - 3 H.P. B & S Engine w/ water pump - 1890 John Deere wagon box seeder, antique - Alaskan Chain Saw Mill - Cub Cadet 27 Ton Wood Splitter - Electric 12 Wheel Horse Yard & Garden Tractor w/ Mower Deck, works - 2 Pallets Bee Hive Equipment - Cub Cadet 104 Lawn Tractor w/ Mower Deck - John Deer 112 electric lift riding lawn mower (12 of them!) - Go-Cart without engine - Sears & Roebuck walk behind tractor - Wheel Horse Hydro-12 Yard Tractor - 6 cyl. Turbo Dentz engine - (8) Gravelly Tractors, walk behind, various condition - 1950's Ford, perfect! no title - Old Iron Wheel JD Wagon - (2) Fisher/Davies Sawmills, 1912 era - JD Mower, horse drawn - Fisher/Davis Sorgum Press, Old! - 16' Livestock Trailer, no title - Oliver Horse Drawn Plow

SHOP TOOLS

- Pipeline Welder - Large Yard Cart w/ Blower/Vac - Radial Arm Saw, Delta Super 990, on stand - Hand Crank Sheep Sheerer's - BCS 725 8 HP Kohler Roto Tiller - Southbend 9" Metal Lathe w/ Tooling - Quincy 3x2 1/2 Air Compressor - 1912 Hand Crank Forge - Small Portable Air Compressor - Bicycle w/ Motor - 26" Band Saw, Industrial (early 1900's) - Several dozen Chainsaws of all types & sizes, over 100! - Lots of Yard, Garden, Farm Tools, Shovels, Picks, etc. - Chicago Chain Sharpener - 8" Bench Vice - Small Farm Trailer, 6'x10' - Old Gas Pumps & Pipes - Titan gas powered hand post driver w/ GX35 Honda Motor, in case - Lots of misc, scrap - 36" Yates American Band Saw - 30" Fay & Egan Edger - 16" Radial Arm Saw - 30" AWWM Jointer, huge! - Lincoln Welder, older - Wallace Mortiser Machine, 9-683 G.E. - Chain Hoists - H.D. Ind. Drill Press - 26" Band Saw, Crecent - Motor Lift, hyd. - Ind. Delta Rockwell Scroll Saw - 48"x16" Rockwell/Delta Wood Lathe, Ind. - 12" Jointer, Ind. AWWM HD, complete & works, 110 7.5 hp - 2 Bench Grinders - 36" 1919 Band Saw! Ind. Greenlee Bro. - 6 Sawmill Circular Blades - Lots of Misc Tools - Parts Washer - Radial Arm 12" Saw, works! Red Star - AMT Metal Band Saw, 6" - H.D. Air Compressor, portable - 16" Ind Table Saw, 1900, works! - Forney Welder & Leads - Ind. HD Metal Cutting Hack Saw - Gas Powered Air Compressor - 30 Ton Hyd. Press, Harbor Freight - Antique orchard sprayer - Ant. Platform Scales, 8.5'x17' long, Brass - Several Push Mowers - Front Tine Tiller - Power Matic Table Saw 74-A

HOUSEHOLD & PRIMITIVES

- 4 burner electric stove - Taylow 683 Ice Creamer Machine, works good, on coasters - Salt Water Fish Tank - Household items, Dishes, Pots, Pans, Dehydrator, etc. - Lamps - Books - A/c - Antique Irons - 1868 Domestic Treadle Sewing Machine - 1876 Domestic Treadle Sewing Machine - Various other Sewing Machines (Mim-C) (White) - 15-20 Sewing Machine Heads - 1948 Singer Treadle, Parachute Sewing Machine 61W156, works! - Treadle Sewing Machine Stands



There will be a loader available at the auction! Come out and join us for this unique auction!
Reg



AUCTION
Company, L.L.C.
417-257-8385
Auctioneer: Reg Kelly

For more Pictures & Info VISIT:
www.KellyAuctionCo.com

Land Auction

108^{+/-} Acres

ONLINE BIDDING ONLY
7246 COFFEY HOLLOW RD.
MACKS CREEK, MO.
(HEART OF THE OZARKS)

*North East of Springfield, Mo
 *South West of Jefferson City, Mo.

BIDDING ENDS: (SOFT CLOSE)
THURS. MARCH. 3 @ 6:00 P.M.

OPEN HOUSE: Sat. Feb.
19 & 26 @ 1:00-3:00 P.M.

SELLING IN 1 TRACT!

Legal: Sect. 35 TWP. 38N R19W
 Camden County, Mo.

TAXES: \$1,940.00

PIN: 15-7.0-35.0-000.0-000-006.000
 Macks Creek School District



TRACT 1: 108 +/- ACRES (w/ Home & Outbuildings)

This farm consists of Timber & Pasture on bottom part of farm and up on the ridge. Creek runs through bottom part of farm. Farm has 4 strands of barbed wire fence (area's need repaired). Abundant wildlife! Niangua River & Lake of the Ozarks close by! • **HOME:** Built in 1994, 1.5 Story, 2,677 sq ft., (3) Bedroom, (2) Bath, Attached 2 car garage • **MOBILE HOME:** 1987, 672 sq ft., (2) BR., (1) bath. • **OUTBUILDINGS:** Pole Barn, 40'x46', built in 2001 • Pole Barn w/ lean-to on each side, 47'x48', built in 1994 • (2) Wood Framed Buildings, 46'x126', built for Hog Buildings in 1996, 1 of these buildings has roof caving in on east end. Not been used for past 5 yrs. Lagoon is still at east side of buildings. • Detached Garage, 24x24, built in 1990 • Water Well: Well drilled on farm in 1990. ENTIRE PROPERTY NEEDS A HAIRCUT & SHAVE! BEAUTIFUL SETTING!! Co-Broker participation welcome, please contact Cory. Property is being sold by the acre based on taxable acreage

DANIEL SCHMIDT & SHAWN SCHMIDT, OWNERS

Cory Craig

AUCTIONEER
217/971-4440

www.corycraig.com

Register to bid, view catalogue & terms @ corycraig.hibid.com

Firearms Auction

Saturday March 5th, 2022 • 10:00 a.m.
Doors open at 8 AM on Saturday
Sale Preview - Friday, March 4th • 6-9 p.m.

The Red Shed
I-44 to exit 179 • 169 Truman St
Doolittle, MO 65550

SELLING 300 FIREARMS

SOME OF THE HIGHLIGHTS TO INCLUDE:



Lot 23 Remington Nylon 66 Black Diamond .22



Lot 37 Ruger Red Hawk 7 1/2" .44 Magnum



Lot 48 Browning A5 3" Magnum 12 Ga. (Japan)



Lot 66 Remington 141 "Gamemaster" .35 Remington



Lot 80 Ruger #1 .375 H & H



Lot 104 Taylor & Co. 1874 Sharps 45-70



Lot 113 Remington 1917 U.S. 30-06



Lot 121 Winchester M1 Carbine



Lot 131 Savage 1899B 25-35 w/26" Octagon Barrel



Lot 144 Colt 1911 .45 ACP Marked U.S. Property

Lot 150 Smith Cavalry Carbine 50 cal. (1864)

Lot 175 Remington 700 Stainless 7mm/08

Lot 185 Springfield US Model 1795 Type III Flintlock 69 Cal.

Lot 213 A.H. Fox Sterlingworth 12 Ga. SxS

Lot 220 DCA AR-15 5.56 cal. 16" barrel

Lot 253 SightMark Photon RT 4.5 x 42S Night Vision Scope

Lot 260 Henry "Big Loop" .22 carbine



J & J Sales, LLC

Pictures on www.auctionzip.com (auctioneer ID #28053) • Pictures also available on Hibid.com

573-341-5450
Office

573-465-4647
Julie Reagan

573-465-0642
JD Roach, Auctioneer

573-762-2227
Sale Day Number

jjsalesllc12@gmail.com

NEW ATF RULE - For ATF Form 4473, current name & address must exactly match the photo ID such as drivers license. **MUST MATCH!!** If not, we need supplemental government issued documentation with matching current address such as vehicle registration, property taxes, county or city utility bill. Cannot be a PO Box!
Concessions by Mt. Olive Baptist Church

Terms of Sale: Sale day announcements supercede any and all printed material. Photo I.D. required for buyer's number. No buyer's premium. Payment accepted by cash, check, debit/credit card. There is a 3% convenience fee unless paid by cash or check. Nothing removed until settled for. All state and federal firearms regulations will be followed. Not responsible for loss or accidents.

Sam **CRAWFORD AUCTION SERVICE** LLC

Will sell the following located 5 miles North of Cross Timbers, MO on Hwy. 65. Watch for Auction Signs.

SATURDAY, FEBRUARY 26TH, 2022 - 9:30 AM

COINS - GUNS - TRACTORS - TRUCKS - MACHINERY - MISCELLANOUS

COINS - Sells 9:30 a.m.

- 1853 Seated Quarter
- 1911 Barber Quarter
- 1910 Barber Half Dollar
- 1917 Reverse S Liberty Half Dollar
- 4 - 2017-2020 Silver Eagle
- 1998-01-04-06-07-08 Proof Sets
- 1879-82-(2) 1890 - CC Silver Dollar
- 1900-03-04 Silver Dollars
- Other Silver Dollars
- 1878 Five Dollar Liberty Gold
- 1879 Five Dollar Liberty Gold
- 1881 Five Dollar Gold

TRACTORS

- Deutz 6006 Diesel w/Loader
- Massey Ferguson 135 Gas & Blade
- Massey Ferguson 230 Gas w/MF Quick Attach Loader
- Massey Ferguson Gas & Loader

TRAILER, TRUCKS & CAR

- 03 Exiss Aluminum Gooseneck 2 Horse w/Front Living Quarters, Clean, Pulled Very Little
- 71 Ford Grain Truck, V-8, 5-2 Speed, 14' Bed & Hoist
- 69 Chevrolet Grain Truck, 6 Cyl., 4-2 Speed, 14' Bed & Hoist, Newer Tarp
- 02 Chevrolet Trail Blazer, 2 Wheel
- 99 Chevrolet Tracker, Hard Top, 2 Wheel

Selling For Hammond Farms

- Cat 955 Track Loader, Brush, Cab (On Job 2/10)
- 96 Ford 1 Ton, 460 Gas, 4x4, 5 Speed, 11' Flatbed, 180K, Low Miles on Motor Overhaul, Good, Clean Truck
- 18' Goose Neck Flatbed, Fold Down Ramps
- WW 16' Gooseneck Stock Trailer
- 10' Bush Hog Cutter, Pull Type
- NH 617 3 Pt. 9' Disc Mower, Good
- 10 Wheel V Rake w/Cart
- Hyd. Bale Spike For Truck, G/N Hook Ups, Used Little

MOTOR HOME

- 99 Newman Mountain Aire Motor Home, Cummins Diesel, 1 Slide, 80,000 Miles, Shedded, Good

MACHINERY & MISC.

- New Idea Hay Rake
- Massey Ferguson Hay Rake
- Front End Loader
- Quicke 310 Front Loader
- Wagon Hoist
- PTO Snow Blower
- Belt - Cut Off Saw
- Dodge ½ Ton Pick-Up Bed
- 5 Sq. Asphalt Shingles, Black
- Lot Plastic Mineral Tubs
- 2-3 Trailer Load Misc. Tools - Farm Items
- Misc. Household Items



TERMS: Cash or good check. Nothing removed until settled for. Not responsible for accidents. Lunch available. Statements made day of sale take precedence over printed matter. All items sell as is. No warranties given or implied.

417-998-6629
Cross Timbers, Mo.

CrawfordAuctionService.com



Sam
417-328-9137

Chase
417-399-1904

Chance, CAI
417-298-1751

Tom Poynter
Jack Lancaster



ANNUAL SPRING CONSIGNMENT AUCTION

SATURDAY FEBRUARY 26, 2022 @ 9:00 AM

Allen Auction Sale's Lot • 490 S. Hwy 47 • Hawk Point, MO, 63349

Directions: Allen Auction Sale's Lot. From Hawk Point, MO, Take Hwy 47 South 2.5 miles, Auction on Left Side. Watch for Signs Day of Auction.

Please Note: We will be checking in machinery Saturday 2/19/2022 from 8-4 & Sunday 2/20/2022 from 9-4. We will also be unloading & checking in machinery all week. Look forward to seeing you!

Due to the Covid-19 Virus, PLEASE bring your own PPE and maintain 6' in social distancing.

Selling order - 10:00 to 12:00 noon (3 - Pt. Equipment & Lawn Mowers) • 11:00 AM Guns • 12:00 noon (Tractors & Tillage equipment) • Followed by (Trailers & Vehicles)

COMBINES & HEADS

30' Header • 35' Header
2 - Combine Tires, 900.60.R32,
like new

TRACTORS

2019 Kubota M6-131 Tractor, 131
HP, 80 Hrs, w/ 2020LA 2255
Loader
1996 JD 8770 Tractor, 5700 Hrs,
New Tires
2007 New Holland TD95 Diesel w/
820 Loader, 1477 Hrs
Case 2590 Tractor, Cab, Duals, Dual
Remotes, 5590 actual hrs.
Allis Chalmers Model C Tractor,
Ser#41789
1968 JD 4020 Tractor, 110 HP, Tur-
bo Charges, 15 hrs. on overhaul,
new batteries

Case Int'l. 45, 2 WD, No Loader
AC 180 Wide Front
Corn Pro Tractor, Diesel
Ford 5000 M&W Turbo, new
clutch, motor was overhauled
2165 Cub Cadet 48" Deck w/
International Tractor
New Holland Front Wheel Assist
Tractor w/ Loader

FARM EQUIPMENT

Land Pride 15' Batwing Brush Hog,
Chains, Hard Tires, 7 Series, Like
New, 540, PTO
Int'l. 496 Disk, w/ 18' Harrow
Dempster 6 ton Fertilizer Buggy
DMI 4100, 11 shank Anhydrous
Applicator
JS 8300 Soybean Special Drill
Case Int'l. 4600, 24' Field Cultivator,
w/ Remlinger 3 bar Harrow
Sukup High Capacity Seed Clean-
er, new electric motors
JD 7200 Max Emerge 2, 6 row
planter, 3 bushel boxes, no till
coulters, w/ HD down pressure,
finger pickup
Int'l. Suitcase Tractor Weights
Int'l. Rear Wheel Tractor Weights
3 Pt. Blade • Fuel Tank
Carolina Swivel Hoist w/ New
Hydraulic Cylinder, Model SH
1000
3 Pt Carryall • 3 Pt Rear Lift
Hi Lift Farm Jack • Kinze Planter
Heider Gravity Flow Wagon, 200
BU (Auger & Tarp, 2 yrs. old) w/
Kewanee Running Gear
5 - Gravity Flow Wagons
2 Poly Tanks, 55 Gallon Each

Blue Gravity Flow Wagon
JD 1210 A Grain Cart
Int'l. Grain Drill
Hardi 1100 Navigator, 1100 Gallon
Tank, 60' Booms, Hydraulic
Driven Pump, Rinse System,
New Tips, New Hydraulic
Cylinder Seals

Gravity Wagon, Broken Tongue
Kewanee Running Gear
Rock Bucket • 3 Bottom Plow
Hydraulic Skid Steer Loader Forks
Black Gravel Bucket
Int'l. 496 Disk 18' w/Harrow
3 Pt Blade • Fuel Tank
Moldboard Plow
Grain Bed, 15 Ft, needs work
2 Compartment Fuel Tank
Land Pulverizer 3 Pt Hitch
6' Wide Pull Type Brush Hog
Flat Prow Tires

Wisconsin Tilt Deck 18 Ton, 28"
Trailer, Air Breaks, Hydraulic
Winch
2 New Tree Shears for Skid Loader
Int'l. 4600 Field Cultivator, Hyd-
fold, 24' w/ 5 Bar Harrow
JD 630 Disk, 9" Spacing w/ New
Reminger 5 Bar Rolling Basket,
21' 9"

400 Gallon Fuel Tank Stand
Plastic 65 Gallon Tank
3 Pt. 7" Disc • JD 5' Brush Cutter
2 Bottom Plow

CONSTRUCTION EQUIPMENT
2006 Bobcat T190, enclosed Cab,
Heat & Air, 2400 Hrs

HEAVY DUTY VEHICLES & VEHICLES

1975 Chevy 2 Ton Grain Truck, No
Tag Axle, New Tires & Rims, 16'
Bed, W/ Nice Roll Tarp, Newer
427 GM Goodrich Motor From
GM
2004 Honda, Title
1997 Ford F150, ext. cab, 4x4
2004 Volkswagon Toureg, Title
Polaris Ranger SxS, 2x4
White Utility Bed for Cabin Chassis

HAY EQUIPMENT

Heston Round Baler, 5 x 6, String,
monitor works good
Flail Mower

LUMBER

Large tractor trailer load of New
Oak, Walnut & Cherry Lumber

TRAILERS & WAGONS

2012 32' Gooseneck Trailer w/ 4'

Beaver Tail, w/ winch, title
1997 16' Tilt bed Trailer, title
16' Trailer, no Bed, NT
Old Wooden Running Gear w/
Metal Floor
2 Box Wagons
Flat Bed Wagon w/ extra bed
frame

LIVESTOCK EQUIPMENT & SUPPLIES

3 Creep Feeders
**GUNS / SUPPLIES /
AMMUNITION**
Ruger Wrangler, 22 LR, Ser#200-
34337
Walther CCP 9MM, Ser#WK016140
Ruger Single Six 22LR & 22 Mag
Cyl., Ser#265-07623
Taurus TX 22-221LR,
Ser#1PT010591

Ruger American 17HMR, Ser#832-
80257
Ruger American 243 Win, Ser#690-
58500
Savage Model 63KM, .22 Mag
Remington Model 31, 16 G, Pump
H & R Model 490, Topper Jr, 20 G
Traditions Model Field Hunter,
12 G

Henry 22 LR, Lever
Winchester Model 290, Semi Auto
Sears Roebuck Model 2200, Bolt
Action 22 Cal.
Western Field Model 35, 12 G
Pump • 17 HMR
250 Rds. Hornady 17 Grn. 17 HMR
• 500 Rds. of 17 Mach 2
Cross Breed Holster & Mag Holder,
for CCP Walther

Prime Dual Cam Bow, Case,
Arrows & Release
Pistol Case - BSA Red Dot
Simmons 3x9 Scope
Tru Glowscope
Redfield 3x9 Scope • Misc. 243 Rds.
Misc 223 Rds. • Misc. 250 Rds.
20 Grn. CCI • Nitelite
3 Old Timer Knives
True Talker Deer Call & Antlers
Fox Pro XR6 Caller
Lead Shot Bags • Decoy
Lot of Duck & Goose Decoys
Lot Fishing Poles
API Deer Climber Stand, Alumi-
num
24" Fishing Hoop Net
20 HP Mercy Boat, Motor, No Title
2 Five Gallon Boat Gas Tanks

Deer Stand

WINDMILL

Aermotor Windmill, 8' X 30'

LAWN & GARDEN

Hustler Raptor, 52" Cut
Gravely 60HD ZT
Front Mount Mower
Scag Wildcat 61" • GX345 Mower
JD 425 Riding Mower
Ex Mark LX801GKA6, Bad Engine
Lazer X Stand Behind
Ex Mark LZ 545 Stand Behind
Ex Mark Walk Behind 48"
Cheetah ZTR • Scag V-Ride 61"
Ex Mark Walk Behind
UE 60" Walk Behind
UE 52" Walk Behind
UE Com Walk Behind
UE-Staris 48" • UE-Staris 52"
UE-Staris 52" • UE-Staris 52"
Grasshopper 930 D-72, ZT

RECREATION

2007 16' Bass Tracker, Pro-Team
172X, Title, 2006 Mercury 50
HP Motor, less than 200 Hrs. on
Motor, Title, w/ 2 Hummingbird
Fish Finders, 565 & 570, w/ Boat
Cover & Bimini Top, Stereo

Polaris Ranger 2x4, SXS
Kubota SxS 500

TOOLS & SHOP EQUIPMENT

6 Gallon 150 PSI Compressor, NIB
8" Delta Drill Press
Ryobi 7 1/4" Saw w/ Case
Tool Box for Pickup
1 Black Flat Bed for Pick Up
Meta's list • 6 4' Drywall Benches
3 7' Extension Ladders
1 Plastic Truck Tool Box
1 12" x 10' Expandable Aluminum
Walk Board
1 14" x 10' Expandable Aluminum
Walk Board
110" x 10' Expandable Aluminum
Walk Board
116" x 10' Expandable Aluminum
Walk Board
20 48" Drywall T-Squares
2 7/4" Circular Saws
Lot of Drywall Screw Guns
Homelite Chain Saw
30' 3/8" Log Chain
10' x 3/8" Log Chain
Chatillion Wall Mount Beam Scale
6" Bench Mount Vise
Splitting Maul
6 Tool Boxes misc. drywall/ me-
chanic tools

450 Piece Craftsman multi set tool
sockets and wrenches in tool
box • 6" Post Hole Digger
Lot of Long Handle Garden Tools
Air Compressor
Schumacher Battery Charger
Lot of Drywall Saws
LP Gas Construction Heater
Lot of Drywall Screws
Transit Tri Pod Stick
55 Gallon Barrel Pump
Auxiliary Equipment Heater
Box Of Concrete Anchors
Box Of Misc. Letter & Number
Metal Stamps + Tap & Die Set
2" Honda Pump, Runs, Slight Leak
Lot Of Jack Stands • 1/2" Drive
Impact

Misc. Boxes of Tools
Side Tool Box For Pick Up Truck
Flashing Lights
Enclosed Trailer Door Lock
2" Ball Hitch for Trailer
Chain Binder • Box Of Ratchet
Straps • 2 side Boxes for Pick Up
5 Hand Hoes • Tree Saw
2 Snow Shovels

MISCELLANEOUS

2 Wagon Wheels • Barber Chair
Lot of Horse Halters, Lead Ropes
Set of Antique Hayforks
Single Trees • Misc. Wagon Parts
3 Collectable 5 Gallon Sinclair
Oil Can
1 Collectable 5 Gallon Pennzoil Oil
Can • 2 Tires, 480 80 R 38
2 Rolls Chain Link Fence • Pipe
5 Mobile Home Axle's w/ 7 Tires
& Wheels
2 Plastic 50 Gallon Barrels
16 Rolls of Snow Fence • Truck
Tailgate
Double Square Wash Tub Stand
Round bottom Wash Tub With
Stand
2 - 24" Tractor Rims
3 Cartons of Floor Tile
Bicycle Car Carrier
Tote of Planter Parts
2 - 4x4 Tubs, Mouse Proof, Water
Proof Filling Cabinet
Porch Thermometer/Clock
Corner Cabinet
Magic Heat Wood Stove Blower
Sider Press • Barn Windows
30 Sheets of Tin • Pallet of
Windows
Pile of Old Barn Wood
8 Wood Posts

PARTIAL LIST - GO TO WEBSITE FOR FULL LIST, UPDATES AND PHOTOS

Auctioneers Note: This is a partial list. We will be running 2 auction rings. Please come prepared with extra bidders. Any questions on any of the equipment, feel free to give us a call at the office or email us at office@allenauction.net. Thanks Nick and Kyle.

ALLEN AUCTION & REAL ESTATE SERVICE LLC

(636) 338-4805 • Hawk Point, Mo • www.allenauction.net

The Auctioneers, Nick Allen (636) 358-2900 • Kyle Allen (636) 236-2344

Wheeler Livestock Auction, Inc.

Special Bred Heifer Sale

Osceola, MO



SATURDAY, FEBRUARY 26, 2022 • 6:00 P.M.

Expecting 800 head of Bred Heifers, Bred Cows & Pairs

T. Richards-

- 2 Red Ang bulls, 3 yrs., 1,600 lbs., 1 Red Ang bull, 4yrs., 1,700 lbs.,

McMullen Farm-

- 38 Outstanding Ang Hfrs., 2 yrs., 1,150 lbs., w/ 38 AI sired BWF clvs. 350 lbs., The hfrs. are AI bred back to top Ang Bull on Nov. 26th then cleaned up with Ang bull. These heifers are fancy & gentle, complete health & mineral program.

Mark Wilson-

- 4 Blk hfrs., 4 Red hfrs., 2 yrs., 1,300 lbs., Bred to CE +5 Blk Ang Bull due March 5th. Big fancy set of hfrs., complete health program.

Kelly Farm Dispersal-

- 12 Fancy Ang hfrs., 2 yrs., 1,100 lbs., bred to CE Ang bull for Feb. 20th. 15

Fancy BWF hfrs., 2 yrs., 1,100 lbs., bred to CE Ang bull for Feb. 20th. 50 Ang cows, 5 yrs., 1,300 lbs., bred to Horn Herf bull. 50 Ang cows, 7 yrs., 1,300 lbs., bred to Horn Herf bull. 20 Ang cows, 6 yrs., 1,300 lbs., w/ 20 BWF clvs. 400 lbs., cows bred back to Horn Herf bull. The above 147 cows all home raised, gentle, bred to top bulls.

Montgomery Farm-

- 45 Blk cows, 3-6 yrs., 1,300 lbs., bred 3rd. 15 Red & Yell Char X cows, 3-6 yrs., 1,350 lbs., bred 3rd. The above 60 cows bred to top Ang bulls, 6 calves on ground & more by sale day. Cows complete vac program, gentle & good.

Darrell Watson-

- 20 PB Herf cows, 5-7 yrs.,

1,400 lbs., w/ 20 F1 Brah clvs. up to 400 lbs. 15 PB Herf cows, 5-7 yrs., 1,400 lbs., bred 3rd to Grey Brah bull. 1 Reg Grey Brah bull, 5 yrs., 2,000 lbs., gentle. 12 F1 Brah hfrs., 750 lbs., open. 1 Red Brah Bull, 1 yr. Fancy set of Herf cows, good milkers & gentle.

T & T Farm-

- 40 Herf cows, 5-7 yrs., 1,150 lbs., w/ 40 F1 Brah clvs. up to 500 lbs., cows bred back to Grey Brah bull. Cows are gentle & calves tagged to match.

Williams Farm-

- 15 Yell Char X cows, 3 yrs., 1,000 lbs., bred 3rd. 20 Blk cows, 4-6 yrs., 1,200 lbs., bred 3rd. 20 Mix cows, 4-6 yrs., 1,200 lbs., bred 3rd. The above 55 cows are bred to Blk Sim Ang or Char bull,

good calf raisers.

G. Lysinger-

- 4 Corr cows, 7 yrs., 750 lbs., w/ 250 lbs., Gelv X clvs by side. 1 Corr cow. 7 yrs., bred 2nd. 1 Corr cow. 3 yrs., 800 lbs., bred 2nd to Herf or Blk Sim bull. Cows dehorned & gentle.

Gore Farm-

- 30 Blk & BWF cows, 3-6 yrs., 1,250 lbs., 20 Red & Yell Char X cows, 3-6 yrs., 1,250 lbs., There is 15 calves on the above 50 cows & calving daily, rest bred 3rd. 15 Mix cows, 3-6 yrs., 1,100 lbs., w/ 300 lb. clvs. Cows bred back to Char or Red Ang bull.

S & P Farm-

- 32 Ang cows, 4-6 yrs., 1,250 lbs., bred 3rd to Ang or Char bull.

Seedstock plus Red Rewards Sale - March 12th • March Cow Sale - March 26th

Wheeler Livestock Auction, Inc.

Osceola, MO • 685 SE 13 Hwy., PO Box 560 • BARN 417-646-8102

WHEELER

LIVESTOCK

**AUCTION
INC.**



Byron Wheeler-417-777-0897 • Skyler Fisher-417-298-9051 • Les Tennis-417-466-8786
Red Whistance 417-276-7909 • Zach Lightfoot 417-399-5053
Burleigh Wheeler-417-840-6561 • Darwin Hearting-417-296-1029
Kevin Wade-660-492-3279 • Tim Sherrer 573-855-1951

Office Manager: Weston Shelby, 417-298-1316

Bid online on CattleUSA • www.wheelerlivestock.com

Like us on Facebook-Wheeler Livestock Auction

MONTHLY CONSIGNMENT

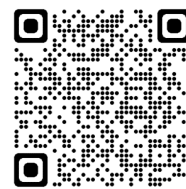
Auction

MARCH 5, 2022 AT 10:00 AM

FIREARMS SELL AT 12:00 NOON SHARP

304 Springfield Rd Ava, MO 65608- Across from Town & Country Supermarket
UTVs • Vehicles • Equipment • Firearms • Furniture • Household

SCAN ME!



Scan with your phone's camera to be directed to our website for more photos and info!

VEHICLES & EQUIPMENT

2006 Dodge Ram 2500 crew cab Hemi
 18' Flatbed Utility Trailer
 2004 Gulf Stream 26' camper
 Hesston 1320 Haybine
 New Holland BR780A net wrap baler
 Steel flatbed

UTVS

John Deere Gator 4x4 XUV 550
 2018 Textron Havoc X
 1983 Yamaha Maxim Motorcycle (w/ extra parts)

FIREARMS

Frontier Carbine .50 cal BP
 Jukar Spain .45 cal BP
 Mountain Stalker Rifle .50 cal BP
 Mountaineer .50 cal BP
 Riflescopes
 Assortment of Ammo
 TC Compass Winchester .308 S# TJD0062
 Savage Mark II Call 22 LR S# 0570075
 20 GA Model SB S#508777
 Rossi 243 Winchester S# SP360396
 Savage B-MAG 17 S# K796859
 Savage Mark II Cal 17 Mach 2 S# 2051996
 Hi Point Firearms Model C9 9mm Luger
 Rossi 223 Rem S# 623-03-08-5
 Rossi 20 GA 3" Mod Barrel S# 221-20-8-5
 Remington Model 11-48 20 ga

Winchester Ranger 30-30
 New England Pardner Model SB1 410 ga 3"
 Winchester 22 L or LR Model 180
 Hornady SST Shotgun Slut 5 Cartridges
 Remington UMC Value Packs 50 rounds
 Remington UMC 223 Remington Rifle Cartridges
 Phoenix Arms model HP 25A .25 ACP cal

HOUSEHOLD & SHOP

Griswold cast iron
 Sliding Glass Doors
 Garage Door Tracks
 Lawn Chairs
 Antique Dressers
 Night Stands
 Mid Century modern Dresser
 Rolling Beverage Cart
 Office Furniture
 Decorative Bench with storage
 Sofa Table
 Storage Cabinet
 Misc shop Tools
 Queen Size Bedroom Suite
 Antique Library Table
 Dining Tables
 Vintage Train Sets
 Gourd Birdhouses
 Presto Food Dehydrator
 Antique harnesses
 Rhino Rack 2500 Series
 Carnival Glass Pieces
 Copper Skillet Set
 End tables
 Coffee Table with Glass top
 Entry Way Tables

Sofas
 Numerous Chairs
 TV Stand
 Bar Stools
 John Deere Collectibles
 Vintage Collectible Cars
 Glassware
 Stroller
 Weed eaters
 Egg Incubators
 Digital Microscope
 Potable DVRs
 Multifunctional Shovels
 Vizio Flat Screen TV with mounting hardware
 Chandelier Light Fixtures
 Sterling propane overhead Furnace unit
 Misc Kitchen Items
 Gary Patterson Porcelain Collector Plates
 Waffle Maker
 Tile Saw
 Table Saw
 Coleman kerosene Lanterns
 Bostitch and Senco power tools
 Vintage Tackle Box with tackle
 Antique Toys
 Kansas City Chiefs (Travis Kelce) signed Picture
 Kansas City Chiefs (Larry Johnson) signed picture
 Misc Cookware and baking pans
 Coffee Pot
 Taster
 Turkey Fryer
 Old Radio with speakers
 Lamps
 Weber BBQ Grill
 Dehumidifier
 Estate refrigerator/freezer
 Velocity Exercise Bike



FOR MORE PHOTOS, VISIT OUR WEBSITE CHEYNEAUCTIONS.COM OR FIND US ON FACEBOOK!

Auctioneer's Note: More consignments showing up daily! Check our website and Facebook page for updates. We are ready to get back into the swing of things. This will be a fun auction, with something for everyone! We hope to see you there!



Cheyney Auction Company, LLC

Real Estate • Livestock • Farm & Ranch • Equipment • Household • Antiques
Travis Cheyney, Auctioneer • Buddy Boyd, Ringman
417-543-8751 • cheyneyauctions.com

ANNOUNCEMENTS Made Day Of Sale By Auctioneer Take Precedence over any Printed Matter. Not Responsible For Accidents. All items sold as is, where is, with no guarantee. Terms of sale: cash, credit/debit card, or check with valid ID

VISIT WEBSITE FOR PICTURES

ESTATE AUCTION

Household ~ Shop Items ~ Outdoor ~ Miscellaneous ~ Vehicles ~ Antiques ~ Collectibles

SATURDAY, FEBRUARY 26TH- 10:00 A.M.

Location: 3961 Hwy A, Mansfield, MO **Directions:** From Mansfield Square go East on A Hwy approx 3.3 miles to Auction on left. **WATCH FOR CHADWELL AUCTION SIGNS.**
Payment System: Cash • Debit Card • Credit Card (Debit / Credit Card Fee Will Apply) Checks approved if known by auction company.
VISIT: WWW.CHADWELLAUCTIONS.COM

Carol Barengo Trust

Champion 60 Gallon Air Compressor on Wheels



Matco Tool Sand Blaster

HOUSEHOLD

Wicker Chairs • Metal Filing Cabinet • Maple Hutch • Oak 3 Drawer Dresser • Dehumidifier • Whirlpool Upright Freezer • Western #6 Crock • Floor Fan • Oak Dining Table w/4Chairs • Oak Computer Desk • Cutlery • Canister Set • Toaster • Hamilton Beach Drink Mixer • Flatware • Pots & Pans • Blender • Old Style Beer Pitcher • RCA Mini Fridge • Seth Thomas Mantle Clock • Cuckoo Clock • Paper Shredder • Mirror • Jewelry Box • Oak Night Stands • Queen Bed • 36" Vizio Flat Screen TV • 46" Sony Flat Screen TV • Lamps • Wooden Rocking Chair • 6 Drawer Oak Dresser • Pleather Couch • Pleather Rocker Recliner • Coffee Table • Pictures • Other

SHOP ITEMS

Stand Light • 20 Ton Bottle Jack • Jack Stands • Extension Cords • Automotive Dent Pullers • Craftsman Tool Box • Com A Long • Walker 4 ton Floor Jack • Cobalt 3 ton Floor Jack • 16 Gallon Shop Vac • Impact Wrenches • Large Lot of Socket Sets • Tools • Air Tools • Air Chisels • Pipe Wrenches • Large Tool Box on Castors • Automotive Paint • Work Bench on Castors • Air Hoses • Rhino Car Ramps • Welding Helmet • Argon Gas Bottle • Hand Saws • HD Stand Grinder • Metal Shelving • HD 2 Wheel Dolly • Dayton 12 Speed Drill Press • Delta Miter Saw • Oil Reclaimer • Craftsman Tool Box • Reese Hitches • Oils & Solvents • 200 Amp Schumacher Battery Charger • 4" Vise • Nut & Bolt Bins • Makita Drill • Acetylene Torch Set • Shop Stool • Engine Blocks • Cherry Picker • Milwaukee Wheel Buffers • Pipe Wrenches • Chain Boomers • Auto Parts • 3 Ton Floor Jack • Shop Fan • Northern Tool Sand Blaster (new) • Tip Sandblaster Pressure Fed • Other

1976 Ford Cobra II Automatic V6 21,xxx miles 2 Door



OUTDOOR ~ MISCELLANEOUS

Mower 234hrs (like new) • 20' Extension Ladder • ATV Sprayer • Electric Outdoor Bug Zapper • Fuel Cans • Weed Burner • Heated Pet Bowls • Stihl FS 55R Weed Eater • Gooseneck Ball Plate • Stihl FS 36 Weedeater • Poulan Pro 42cc Chain Saw • 24' Alum Extension Ladder • Insulation • Swing Set • Weber Grill • Window Air Condition Unit • 6' Step Ladder • Dried Food • Buddy Heater • Hose Reel • Step Stool • Chains • Lawn & Garden Tools • Wooden Folding Chairs • Wheel Barrow • Large Pet Carrier • Fruit Jars • Shingles • Fishing Equipment • Tires & Wheels 195-70-14 (new) • Camper for pickup bed (needs work) • Other



VEHICLES

1967 Ford Mustang Fast Back GT (needs restored) • Jaguar XJ6 (for parts only)

~ ANTIQUES ~ ~ COLLECTIBLES ~

Mobilgas Sign (Replica) • Hull Cookie Jar • Old Antique Buffet • Hen on Nests • Oil Lamps • Oak Antique Dresser • Dresser w/ Swing Back Mirror • 1 Man Cross Cut Saw • Airline Radio • Desk • Drop Leaf Table • Pink & Green Depression Glass • Smoke Stand • Old Stand Light • Other



AUCTIONEER'S NOTE: Something for everyone. Come spend the day with us. *Thanks, Shawn*

DRIVER'S LICENSE OR PICTURE I.D. REQUIRED • TERMS: CASH OR APPROVED CHECK OR

Chadwell

Auction Service, LLC
www.chadwellauctions.com

Auctioneer:
SHAWN CHADWELL
417-830-0209

Clerk:
SHELLY CHADWELL
Cell: 417-880-8449
Cashiers:
Shawn Irby • Maria Chadwell
Kati Roberts • Emily Chadwell

PROFESSIONAL SALES MANAGEMENT

LUNCH WAGON • APPRAISAL SERVICE • RAIN OR SHINE
All announcements made day of sale take precedence over any printed matter.
Not responsible for lost or stolen merchandise. Not responsible for accidents.

605 Head in the Catalog plus Uncatalog



Wednesday, March 9 at 5:00 PM
Horsemanship Clinic
By: Kevin Raber,
6:00 PM Horse Preview

Missouri State Fair Grounds, Sedalia, Missouri Spring Sale March 9, 10, 11, 12, 2022

SALE SCHEDULE

Monday, March 7 - Check in 12:00 to 6:30, Check in for Tack and Carriage

Tuesday, March 8 - Check in 8:00 to 6:30, Check in for Tack and Carriage

Wednesday, March 9

8:00 Tack; 9:00 Field Sale, Outside Farm Machinery, Large Antiques, etc.;

9:30 Inside antiques, 12:00 Carriages; 2:30 Harness, Collars, Saddles

Thursday, March 10

8:00 Tack (1 hour in horse ring); 9:00 Cataloged Drafts, Draft Crosses, Halfingers, Friesians and Gypsies, followed by Uncataloged

Friday, March 11

8:00 Tack (1 hour in horse ring); 9:00 Cataloged Standardbreds, Quarters, Gaited Horses, Light Teams and Ponies, followed by Uncataloged

Saturday, March 12

8:00 Tack (1 hour in mule ring); 9:00 Cataloged Mules, Donkeys and Mares in Foal to a Jacks, followed by Uncataloged



4 yr old Quarter Gelding



5 yr old Quarter Gelding



4 yr old Draft Cross Gelding



4 yr old Draft Cross Gelding



3 yr old Belgian Geldings



4 yr old Molly Mule



Hitch Wagon



Antiques



Fringe Top Surrey



7 yr old Molly Mule

Hey, Mark your calendars, tell your neighbors to do the chores, remind the boss your not coming to work as we are all going to Sedalia, for another week of fun, horses, mules and good people! What a great set of horses and mules we got coming. Be sure to visit our web and FB for our online catalog and pictures. Oh, and don't forget Wednesdays, Antiques, Tack, Carriages, Equipment, Shop Related Items. we look forward to seeing you all.

Thanks again for your continuing support. God Bless, Joe & Lonnie

For more information, call Joe Raber: 719-431-3137 or Lonnie Miller: 260-350-4637

Email: boonecountyhorseauction@safecommail.com | Website: BooneCountyDraftHorseandMules.com

Sam
CRAWFORD AUCTION SERVICE LLC
ESTATE AUCTION

Will sell the following at 6533 SE Hwy. Z - Deepwater, MO. 12 Miles South of Clinton, MO on Hwy. 13 to Hwy. Z, Then East 6½ Miles. Watch for auction signs.

SATURDAY, MARCH 5TH, 2022 - 9:30 AM

GUNS - TRACTOR & EQUIPMENT - VEHICLES - BOATS - TOOLS - Misc.



GUNS - SELL AT 9:30 AM

Weatherby MKV 6.5 - 300 Mag. Muzzle Break, Fluted, USA
 Weatherby Vanguard 300 Mag. Japan
 Remington 700 30-06
 Norinco MK90 7.62-39 Sporterized
 Swarovski Z5 Series II
 Winchester 12 12 Ga. Full
 Browning 3" Mag A-Bolt
 Charles Daly 12 Ga. 2¾, Japan
 Remington 700 22 Tip Off, Stainless, Scope
 Verona SX 12 Ga. 3" Mag.
 Mossberg 800A
 Remington 870 20 Ga. Modified
 Remington 840 Springfield 222
 Marlin 22 Mag.
 Stevens 87A 22 LR
 Remington Sportsman 58 12 Ga.
Guns Not On Site Until The Day of Sale
 4-5 Scopes, Lot Assorted Ammo
 2 Tipton Shooting Vises, Shooting Rest
 Lot Asst. Mens Hunting Clothes, Boots, Coats, Work Clothes, Some New
 Lot Hunting & Camping Misc.

TAXIDERMY MOUNTS, OTHER

6x6 Shoulder Mount Elk
 8 Pt. Mule Deer Shoulder Mount w/Framed Picture of Deer
 Antelope Head Mount w/Framed Picture of Animal
 5-6 Other Antelope Head Mounts
 2 Wild Turkey Full Body Mounts, 1 w/Framed Picture of Bird
 5-6 Duck & Pheasant Mounts
 Western Rattlesnake Skin
 Sev. Nice Framed Wildlife Pictures
 Lg. Framed Horse Picture

TRACTOR & EQUIPMENT

SELL AT 12 NOON

17 John Deere 2038R 4x4 w/JD 220 Loader, Folding ROPS, 30 hrs., 37 Engine HP, Hydro, Shedded, Nice

Frontier 3 Pt. 5' Brush Cutter, RC2060
 Frontier 5' 3 Pt., PTO Tiller, RT1157
 3 Pt. Rotomec Post Hole Digger, New
 Frontier Drag Bale/Leveler, 5'
 Land Pride 3 Pt., 8' HD Disk, DH1590, New
 Ag Way 3 Pt. PTO Sprayer, 55 Gal., New
 3 Pt. Quick Hitch
Tractor & Equipment Are All Like New or Are New - Tractor, Cutter, Tiller Are All Kept Inside

**VEHICLES - BOATS
 SELL NEAR 12:30**

08 Ford 350 Super Duty Lariat Crew Cab, Diesel, 4x4, Auto, Nice
 03 Ford 250 Super Duty Crew Cab, Diesel, 4x4, Auto, Shop Built Flatbed
 99 Chev. Tahoe, V-8, 4x4, Auto
 91 Lincoln Town Car, Kept Inside, Runs?
 93 Lance Slide In Cab Over Camper, Has Been Shedded, Looks Nice
 91 Skeeter Bass Boat & Tandem Trailer, 200 HP Mercury Motor, Covered
 89 Tracker 18' Bass Boat & Single Axle Trailer, Johnson Motor, Covered

TOOLS - MISCELLANEOUS

Stihl 180C Chainsaw
 Troy Bilt 6.75 Powerwasher
 2 Mesh Lawn Wagons
 3½ Ton Floor Jack, Small Floor Jack
 Craftsman 10" Table Saw
 2 Shop Vacs, 2 Wheelbarrows
 Craftsman Air Compressor
 4 HD Jack Stands, 21" Push Mower
 3 Professional Craftsman Tool Chests, Like New
 2 Tier Craftsman Tool Chest
 Good Selection Wrenches, Sockets, Power Hand Tools
 Long Handle Tools
 Aluminum Step Ladder

Aluminum Diamond Plate Pick-Up Tool Box
 Lot Gas Cans
 Hose Reels w/Hose, Other Garden Hose
 Sev. Extension Cords, Sev. Ice Chests
 Sev. Lawn Chairs & Lawn Furniture
 Yard & Garden Supplies
 Sev. Hand Sprayers
 Winners Circle Show Saddle - New
 Circle Y Western Saddle
 2 Older Full Size Western Saddles
 Assorted Tack
 Lot Unopened Totes

HOUSEHOLD

Leather Couch, Loveseat, Ottoman, Chair
 2 Coffee Tables
 Smaller Tables
 Sofa Table
 Antique Lamp Table
 Barrister Bookcase
 Gun Cabinet
 Antique Round Oak Dining Table
 Antique Marble Top Table
 4 Oak Dining Chairs
 Sev. Lamps
 3 Pc. King Size Bedroom Set
 Hanging Leaded Shade Lamp
 3 Antique Kerosene Hurricane Lamps
 Copper Boiler
 Gas BBQ Grill
 RCA Console Stereo/Radio
 Antique Sweda Cash Register
 Curio Cabinet
 Pair Bookshelves
 Frigidaire Refrigerator
 Apt. Size GE Refrigerator
 Christmas Decorations
 Asst. Pots, Pans, Small Appliances
 20-25 Boxes Household Items, Unopened

Michael was an avid hunter & camper. Lots of good items at this auction. Will be running 2 rings after the guns and ammo. Guns will not be on site until day of auction.

SAM
CRAWFORD LLC
Auction Service

1944 **CELEBRATING 77 YEARS** 2021
 STARTING 77th YEAR OF SALES AND SERVICE

TERMS: Cash or good check. Nothing removed until settled for. Not responsible for accidents. Lunch available. Statements made day of sale take precedence over printed matter. All items sell as is. No warranties given or implied.

417-998-6629
 Cross Timbers, Mo.
 CrawfordAuctionService.com

Sam 417-328-9137 Chase 417-399-1904 Chance, CAI 417-298-1751 Tom Poynter Jack Lancaster

Michael Hamilton Estate



Saturday, February 26, 2022 • 9:00 a.m.

**LOCATION: In Licking, Mo., take Highway 32 east to old Licking Livestock Auction site.
Next to Hammond Feed & Farm Supply. Watch for signs.**

EARLY START!! To view photos, go to auctionzip.com. Auctioneer #28367 EARLY START!!

Bedroom Set, full, complete	Crystal Glassware	Adult potty
Quilt/Blanket Racks	Cut Glass Dishware	Like new wheelchair
Wooden TV Trays	Salt & Pepper Shakers	Luggage
Hall Tree w/Bench & Mirror	Lot Glass Pitchers	Cot
Lots Children's Movies	Set Pyrex Bowls	Dresser w/mirror
Wash Stand	Phaltzgraff Dishes	Chest
Porch Bench w/storage, made from barn wood	Baking Pans	Wooden Table
Quilts & Throws	Kerosene Heater	Electric Roaster
Picnic Basket	Pyrex Dishes	Electric Skillet
Brother Portable Sewing Machine	Electric Heater	4-31x10.50 R 75 LT 5-hole Chevy Wheels
Kenmore Dryer	Kenmore Refrigerator, like new	4-T195-65 R 15 Tires
Carnival Pitcher & Goblets	Microwave	Fly Tag Mineral Feeders - 3
Kerosene Lamp	Oval Mirrors	Plastic Water Tank
Rolling Pin	Dining Table & Chairs, maple	Galvanized Water Tanks
Chalk Whatnots	China Cabinet	11 Corral Panels
Crock Bowls	Stereo Cabinet	Wooden Feeders with Roofs - 3
Tea Cups, Pitchers	Cream & Sugar, made in Japan	Electric Fence Insulators
Wooden Hames	Blue Vase, Sherbert Dishes	Electric Fence Rods
Carnival 3-footed Bowl	Animal Figurines	Lot of Electric Fence Supplies
Food Chopper, old	Lot small Kitchen Appliances	Black Toolbox
Lot Flatware & Kitchen Utensils	Sewing Machine in cabinet - 3	Feeders
Old Auction Ad from 1849	Tupperware	Gates
Lot Dolls & Angels	Norman Rockwell collection, cups, glasses, magazines	Fence Stretchers
Wooden Blocks	Old wooden Chair	Metal Woven Wire Stretchers
Bear Collection	Leather Bottom Chair	Cow Hip Lift
Cold Packer w/Rack	Round Table & Chairs	Steel Post Driver
Roasters	Platform Rocker	Battery Fence Charger
Electric Oven	Upholstered Chairs	Cattle Water Tank Floats
Wall Mirrors	Couch, Love Seat	3-12 Volt Electric Fence Charger (runs off car battery)
Die Cast collection, Trucks, Cars	Hide-a-bed Couch	Electric Water Tank Heater (used 1 year)
Coca Cola collection	China Cabinet	Bucket of Miscellaneous
Plaques & Wall Hangings	Lamps	2 Wheel Dolly
Jewelry	Throw Pillows	2 Pair of Bull Emasculators
Boot Dryer	Wheelchair	Big Roll of Smooth Wire
Baker's Rack & Corner Rack	Lead Crystal	Post Hole Diggers
Martin House	Blue Candy Dish w/lid	Picks
Lot Upholstered Chairs	Unique Candle Holders	Axes
Child's Wooden Bench w/storage	Pink Candy Dish	Shovel
Oak Library Table	Small Kerosene Lamp	Seed Spreader for 4-Wheeler
Carnival & Depression Glassware, floragold, pink, green, amber	Walker, adult	Box of Cattle Syringes
Pewter Pitcher	Magazine Rack, End Tables	Box of Sockets, Wrenches, Open Box
Crystal Vase & Dish	Blankets	Wrenches, Channel Locks
Teapots	Air Conditioners, 110 v. - #2	Alternator
Divided Dish, pink, Depression	Folding Chairs	Fog Lights
Cream & Sugar, Noritake	Wooden Frame Chair	Boxes of Mechanic Tools
Green Glasses	Bookcase Bed Frame	ATV Box
Sheffield China	Area Rug	Lots more dishes not seen to list, still boxed

**Owners - Vivian Smith Personal Belongings
& Aaron Cantrell**

Terms - Cash or Approved Check. Nothing Removed Until Settled For. Not Responsible For Accidents.
Must show ID to get Buyers #. Announcements Made Day Of Sale Take Precedence Over Printed Matter.

**Buckner & Gately Auction Service
Auctioneers**

Steve Buckner 573-674-2686

Neal Gately 573-202-3132

WANTED: Old Pinball Machines and Juke Boxes. 573-424-7200.

CUSTOM SAW MILLING: 417-533-4607. 417-664-1195. Lebanon.

TRUE MODULARS: 30 to 60 day delivery available, 3 and 4 bedroom 573-657-7040 chateauhomes.net

REGISTERED HEREFORD & ANGUS BULLS: Home raised, Some Show-Me Select Qualified. 573-701-7828. Belgrade.

WINCHESTER MODEL 94: 30-30, lever action. \$1,200. 417-533-9484. Niangua.

QUALITY USED SADDLES WANTED: Will pay cash! George's Tack, Saddles & Feed. 573-346-7866. Camdenton.

KILMER FARM EQUIPMENT CONSIGNMENT AUCTION

SATURDAY, MARCH 5 • 9:30 AM

14769 Cattle Lane, Versailles, MO 65084

Directions: At the Intersection of Hwy 5 and Hwy 52 in Versailles, go North on Hwy 5 for 1 mile to Cattle Ln then turn Right or East and go ¾ mile to Sale Site.



**TRACTORS, CONSTRUCTION EQUIPMENT,
TRUCKS AND TRAILERS, GRAIN CARTS AND WAGONS,
CUTTERS, TILLAGE, COMBINE AND HEADS,
FEED MIXERS, MISC. EQUIPMENT, HAY EQUIPMENT,
SILAGE EQUIPMENT**

Wheeler
AUCTIONS & REAL ESTATE
23101 HWY. 24, PARIS, MO 65275 | 660-327-5890
WWW.WHEELERAUCTIONS.COM

BID LIVE Live Online Bidding Powered By **proxibid**

KILMER FARM EQUIPMENT, LLC
14270 Hwy. 52, Versailles, MO 65084
(573) 378-6615

For more info and photos:
www.wheelerauctions.com

Callaway Livestock Center, Inc.

Kingdom City, MO

**Watch live or bid online thru
D.V. Auctions
www.CallawayLivestock.com**

SPECIAL COW SALE THURSDAY NIGHT

MARCH 3rd, 2022 AT 6:00PM

Estimating 400 to 500 hd of Bred Cows,
Cow/Calf Pairs & Breeding Bulls.

EARLY CONSIGNMENTS

PAIRS: Neuner: 25 Big fancy Blk or Blwlf 1st Calf Hfrs with November Calves by side, Blk Hfrs running back with Horned Hereford Bull, Blwlf Hfrs running back with Sim Angus Calves, tagged to match, very gentle. **Temmer: 10** Big fancy Blwlf 1st Calf Hfrs with November Blk Calves by side, NOT been with Bull, very gentle, Calves tagged to match. **Conroe: 15** Big fancy Blk 1st Calf Hfrs with fancy Blk January Calves by side, Calves tagged to match, very gentle. **Deeken: 15** Big fancy Blk 1st Calf Hfrs with fancy January Blk Calves by side, Calves tagged to match, very gentle. **Northout: 10** Big fancy 1st Calf Red Angus Hfrs with November Blk Calves by side, back with Bull, very gentle. **Hoelsher: 12** Big fancy Blk 1st Calf Hfrs, bred Angus, start March 1st, very gentle. **10** Blk 3-5 yrs. old Cows with fancy A-I Sired Blk Calves by side. **COWS: 25** Fancy Blk or Blwlf Cows, 3-5 yrs. old, Bred Angus, start March 1st. **25** Fancy Blk or Blwlf Cows, 3-5 yrs. old, Bred Angus, start Calving May 15th. **10** Blk Cows, 3-5 yrs. old, Bred to Angus, start Calving August 15th. **1** 2 yrs. old Sim Angus Bull.

Several other cows expected by sale night.
Don't miss this sale. Many more expected by sale day.

All bulls sell at the start of the sale at 6:00pm.

For more information contact:

Roger Temmen 573-680-4538	John P. Harrison 573-220-1482
Justin Oberking 217-440-7724	Lynn Crouch 417-999-4148
Myles Wchorten 573-263-3759	Claude Niemeyer 573-470-1017
Jack Harrison 573-999-7197	Glen Stegman 573-619-8495
Chad Nickelson 573-631-1627	573-642-7486

I BUY.....used mobile homes. Call or text 573-338-6250 or email GregS.CH@outlook.com

FIREARMS: Professional Repair, Restorations and Appraisals. Baron's Gunsmithing. 573-363-5801, Camdenton.

TINY HOMES: We gottem 573-881-3283

OUTDOOR FORCED AIR WOOD FURNACE: Fire proof, insulated, thermostatically controlled. Been made since 1986. Made by Harmons Heating & Cooling. 573-743-6943 or 573-247-5585. Salem.

POOL TABLES: Installations, moves, recovers, repairs, accessories, etc. 573-646-1700.

NEW SCHWINN STINGRAY BICYCLE: Monkey Handlebars. Banana seat. Rear Racing Slick. \$145.00. 573-364-7465. Rolla.



Treasures, LLC

- Nostalgic Candies
- Sports & Trading Cards
- Diecasts
- Model Kits
- Coins
- Currency
- Antiques
- Gag Gifts
- All Occasion Cards
- Much More!

1060 Tower Road • Lebanon • 417-532-6666

LIONEL TRAIN SET: Steam engine, tender, caboose and other car, track and transformer. \$195. 573-364-7465. Rolla.

28X52 AMISH BUILT 1996 DUTCH HOME: One owner, 3 bedroom, 2 bath, utility room, vinyl siding, new architectural shingles, new carpet & pad, 2x6 walls, central air, big stone fireplace. This home is in perfect condition. Everything guaranteed. Includes new vinyl skirting. Free Delivery and set up. \$49,995. Call Charlie at 573-786-4003. Hwy 8 & Hwy Y. Steelville.

EARN \$60,000/YEAR PART-TIME: In the livestock or farm equipment appraisal business. Agricultural background required. Home study course available. 800-488-7570 or www.amagappraisers.com

TRUCKERS & LOGGERS: Keep your Diesel engines running smooth this winter by adding Diesel plus. Extends the life of injectors and fuel pumps. For more info. Call 417-241-3653.

AUCTION HERMANN MO AUCTIONS

Thursday, March 3, 2022
6 P.M. • 513 Market Street
Hermann, Mo. 65041

Furniture, table, chairs, couches, recliner, lots of great furniture items and more items coming in.

SEE: www.Facebook.com/HermannMoAuctions
OR AuctionZip.com

TERMS: cash or good check with proper ID or charge (3% fee applied for charge cards) Everything sells AS IS. ALL Sales Final
Food & Drinks Available

CALL: (573) 409-0019 for information or (314) 608-1468

LOOKING BACK WITH AN OLD TIMER BOOK: by Roy G. Mansfield as told to Eula York, of the Osage River Valley and the people who lived there before Bagnell Dam was built. Out of print book, \$20. Many old photos. 417-532-2045. (Leave message and phone number). Lebanon.

FAINTING GOAT BABIES ON BOARD: 1ST kids just arrived. All colors & patterns. 100% pure bred. Check website www.greenacresvillage.com or text 573-216-7796 for more info. Lake of the Ozarks.

CERAMIC CANISTER SET: With cutting board that fits in kitchen counter top. Various species of ducks. Set \$40 obo. 636-239-2695. Washington.

STORY & PICTURES BOOK OF OLD LINN CREEK: Haha Tonka and Camden County, by T. Victor Jeffries, 72 pages. \$5.00 postpaid. (417)532-2045. (Leave message and phone number). Lebanon.

GILSON LAWNMOWER: Triple paint in original color, needs motor and assembly. \$195. 573-364-7465. Rolla.

HEARTH CRAFT GLASS BI-FOLD FIRE PLACE DOORS: Antique brass. \$200 obo. 636-239-2695. Washington.

KESSLING & SMITH FAMILY HISTORY BOOK OF WEBSTER COUNTY, MO: Also, Rader and Mace families. \$6.50. 417-532-2045. (Please leave message and phone number). Lebanon.

KITCHEN FAUCET MOEN: Single lever, sprayer, new cartridge. \$45 obo. 636-239-2695. Washington.



MID MISSOURI STOCKYARDS

REGULAR SALE EVERY THURSDAY 11AM


COW SALE • MARCH 5TH AT 6PM

WATCH OUR WEEKLY SALE IN REAL TIME ON DVAUCTION.COM

For Farm Visits, Market Updates, or Trucking
Call **Zach Cox 417-777-1320**
Dan Romine 573-578-4939

**Competitive Buyers!
Competitive Commission!
Competitive Market!**

Barn: 417-532-9292 
**1-44 • Exit 123 "just outside of Lebanon"
17505 Route 66, Phillipsburg, MO 65722**
For weekly market updates, visit us at www.midmostockyards.com



BUFFALO LIVESTOCK MARKET LLC

276 Hwy 32 W., Buffalo, MO
February 19th, 2022
Receipts: 895 Head

Feeders Steady. Cows \$5 Higher.

REPRESENTATIVE STEERS

300-400 @ 180.00 to 225.00
400-500 @ 189.00 to 218.00
500-600 @ 180.00 to 204.00
600-700 @ 167.00 to 185.00
700-800 @ 149.00 to 159.00
800-900 @ 148.00 to 153.00
900-1,000 @ Pkg. 145.00

REPRESENTATIVE HEIFERS

300-400 @ 170.00 to 202.50
400-500 @ 150.00 to 171.00
500-600 @ 152.00 to 165.00
600-700 @ 145.00 to 156.00
700-800 @ 134.00 to 145.00
800-900 @ 120.00 to 130.00

FEEDER BULLS

400-500 @ 169.00 to 192.00
500-600 @ 160.00 to 183.00
600-700 @ 140.00 to 161.00
700-800 @ 120.00 to 138.00
800-900 @ 125.00 to 145.00

BRED COWS
875.00 to 1,100.00

TUESDAY SPECIAL COW SALES

BRED COWS
1000.00 to 1800.00

COW CALF PAIRS
1150.00 to 2325.00

SLAUGHTER COWS

Boning Flesh 77.00 to 91.50
Med Fleшы Cows 67.00 to 83.00
Thin Fleшы Cows 53.00 to 66.00

SLAUGHTER BULLS

High Dressing 108.00 to 113.00
Med Dressing 93.00 to 105.00
Low Dressing 80.00 to 92.00

MON-WED MARKET REPORT
Listen to KJEL 103.7FM • Lebanon or KYOO 99FM • Bolivar

VIEW OUR SALES AT CATTLEUSA.COM

CALL FOR TRUCKING OR ON-FARM VISIT

Lyle Caselman • Owner-Manager
417-345-7876 • mobile 417-533-2944
Leon Caselman • Owner
417-345-4514 • mobile • 417-588-6185

BIRDS OF MISSOURI FIELD GUIDE:
By Stan Tekiela, 182 pages, \$5. 417-532-2045. (Leave message and phone number). Lebanon.

KENMORE 27" BUILT-IN SINGLE OVEN: Self-cleaning, black, \$100 or best offer. 636-239-2695. Washington.

ROUND GLASS DINING TABLE:
54" wide, 4 chairs, \$50. 417-532-2344. Lebanon.

I BUY GRAIN BINS: All sizes and conditions. Price depends on size and condition. Please call 573-280-5638. Sunrise Beach.

WOODED ACREAGE: Paved road, Collins MO, 5 acres m/l. \$25,000. Collins.

350 FARMALL: Runs good, TA works. 417-349-2908. Cabool.

SMALL SQUARE BALES: Good quality, \$5.50 per bale. 417-345-5634. Phillipsburg.

CORELLE DISHES: different patterns, 48 piece set for \$40. 417-532-2344. Lebanon.

AUSTRALIAN SHEPPERD PUPPIES:
573-202-3132.

FIDDLE, BOW & CASE: Copy of a Stradivarius, \$200. 573-764-4435. Gerald.

GM 1/2 TON 4-WHEEL DRIVE FRONT AXEL HOUSING: With 3.07 gears. Fits a 77 to 87. \$80. 314-303-7857. Cedar Hill.

Your Friend In The Field
Reliable equipment, fair prices and outstanding service you can count on season after season.

SALES • SERVICE • REPAIR

STAHLMAN powersports
1387 S. BISHOP AVE., ROLLA
573-364-6944
WWW.STAHLMANPOWERSPORTS.COM

BAD BOY

CENTRAL BOILER CLASSIC EDGE
TITANIUM HDX
26% Tax Credit on EPA certified Central Boiler Classic Edge HDX models and installation. Call today to learn more!

Outdoor Wood Furnace CentralBoiler.com

The Classic Edge 360, 560 and 760 HDX are U.S. EPA Certified

Yarbrough Equipment Sales & Services, Inc.
9776 E. State Hwy OO • Strafford, MO
417-736-2303 • 1-866-286-6901 • www.yarbeq.com

MINI FARM 18.8 M/L SURVEYED ACRES: 3-bedroom ranch, shop. St. Francis County. Best Offer. Details Call 417-255-6640.

M FARMALL: With SM motor, 417-349-2908. Cabool.

FIREPLACE LOG GRATE: 28" in width. \$25 obo. 636-239-2695. Washington.

5 BLUE CORNFLOWER CORNINGWARE BAKING BOWLS:
With lids, no chips. \$60. 417-532-2344. Lebanon.

MOBILE HOME TIRE AND WHEELS:
\$50 each. Call Charlie at 573-786-4003. Steelville.

BIG HORN 16" SADDLE: Dark leather, excellent sharp, \$200 Firm. 573-205-9401. Belle.

TOTE FULL OF AUNT JEMIMA STUFF:
\$200 for all. 573-327-9068. Desloge.

RUBBER & LEATHER BOOTS AND HIP WADERS. Men's 11, Women's 7, some insulated. \$15-\$40 obo. 636-239-2695. Washington.

DARDEN PROFESSIONAL TIMBER HARVESTING, BUYING STANDING TIMBER: Great prices, improve wildlife habitat and improve forest health. State Certified & Fully Insured! 573-247-4808 or 573-739-1122. Salem.

OLD HANDMADE FULL-SIZE QUILTS:
\$50 each. 417-532-6561. Phillipsburg.

MEDINA FIDDLE, BOW & CASE: \$75. 573-764-4435. Gerald.

PIG FEED 450LB: \$200 firm. 573-205-9401. Belle.

JR'S 4th Annual CONSIGNMENT AUCTION
Saturday, March 19, 2022
Levi Zook, 4875 Hwy BB Hartville, MO 65667
417-741-2070 • 417-741-2312

Directions: From Lebanon, MO take Hwy 5 South approx. 30 miles to Hwy Z, left on Z, 2 miles to Hwy E, right on E to Hwy BB, right on BB to auction on left.

Now taking consignments for farm machinery, horses, antiques, guns, households, and tools. Large selection of farm machinery, antiques, and hand tools already consigned. Loads coming from Wisconsin, Kansas, Iowa, Kentucky, and the surrounding areas.

Now Taking Consignments!
Advertising deadline February 26th
Auctioneer: Martins Auctions

Commission Rates: 20% - up to \$100; 10% - up to \$500; 7% - \$500 & up • \$300 cap on horses

To consign horses call Reuben Click 417-554-3201

PLAD PANTRY
DISCOUNT & SURPLUS FOODS
FRESH PRODUCE LLC
417-532-4700

Snickers Ice Cream Cake.....	\$4.99 46 oz.
Ready to Bake Brownie Dough	\$1.99 4 lbs.
Uncured Honey Ham	\$1.49 9 oz.
Key West Lime Meringue Pie.....	\$1.99 27 oz.
Chocolate Dipped Chewy Granola Bars.....	99¢ 6 ct.

1571 State Hwy 64 • Tunas, MO 65764
Hours: 8:30 a.m. to 5:30 p.m. • Closed Wed. & Sun.

Dent Co \$1,299,000 160 Acres

Perry Spring Branch farm is a Dent County Missouri oasis. Located fifteen minutes south of Rolla, Missouri this farm checks all the boxes. Accessing the property via the one-mile lane from paved county road 5460 provides seclusion second to none. Once on the property you will be greeted to a brand-new custom built, Amish framed home that boasts just over 3200 square feet of finished living space. Two (2) forty by sixty hay barn/machine sheds plus the original home place barn that has been refurbished by the Amish will provide ample storage for your hay and farm equipment. Spring fed Perry Branch dissects the farm providing year-round water in addition to the four ponds located on the property. The new home is immaculate and provides an open floor plan that combines the main living room with the kitchen area. A twelve-foot textured granite countertop bar with sink provides ample space for the whole family to enjoy. Stainless steel kitchen appliances compliment the kitchen. A large master bedroom on the main floor with a huge walk-in closet, jacuzzi bath, and walk-in tile shower will please the most discriminating buyer. Laundry room and utility room on the main floor. Downstairs family room and recreation room has a wet bar/dining area and exits onto the covered patio beneath the upper deck. On the lower level you will find two more bedrooms (one non-conforming) and the third full bathroom. The main floor two car garage is 960 square feet. The exterior of the home is maintenance free diamond coat siding, aluminum soffit and fascia. A million-dollar view from the composite deck with powder coat railing awaits your morning coffee as you take it all in. Sit here and watch the Deer and turkey that visit the bottom field above the spring branch in the morning. Be the first to see this million-dollar view farm by scheduling an appointment with Danny L. Miller at 573-528-1489 or email at dmiller@missourilandco.com



MISSOURI LAND COMPANY
NEW LISTING

Benton Co-40 Acres

\$149,500



This is a very secluded 40-acre tract. The property has a remote 24 x 24 cabin, it would be perfect for a hunting camp. Also has a wood stove to heat the cabin with. Property also has an additional storage shed. Trails run through the property to get to some hidden food plot areas. Some nice mature timber along with some scrubby thick stuff make the perfect deer habitat. I jumped a herd walking down the ridge to the box blind on the north end. Deer rubs were everywhere from this fall. This is living remotely with no electric well or sewer, there is an outhouse for that business. Lays well with some nice flat top hardwood ridges along with some deep ravines. This area is behind a shut gate so not everyone can just drive by the property. This is close to lake of the Ozarks, literally just right down the road. These properties don't last long! Call Mike Stoner at 573-774-9775.



Rolla Office:
12647 S. Hwy 63, Rolla
573-308-4868

Cole Camp Office:
14981 Centerline Ave.,
Cole Camp
660-668-4868

www.missourilandco.com • 660-668-HUNT

Toll FREE number for both locations 844-974-1850

PICKUP TRUCK BEDLINER: Standard size, fits Ford F150-F350. \$40. 314-303-7857. Cedar Hill.

WANTED: Transmission, automatic, 1957 Chevy car, cash paid. 573-636-8000. Jefferson City.

WTB SMALL HORSE WALKER: Good or bad shape. 573-953-7589. Dixon.

REGISTERED POLLED HEREFORD BULLS FOR SALE: Ready to go to work. 417-259-0588. Hartville.

CABLE PULLING JAW GRIP: Klein 1684-5, excellent condition. \$150. 314-303-7857. Cedar Hill.

2 NEW DVD PLAYERS: \$90 for both. 573-327-9068. Desloge.

TOOLBOX WEATHER GUARD DEFENDER SERIES: Like new, across bed, bright extruded, aluminum, 61 inches outside, 51 inches inside, 18 inches high, keys, \$300. (cost \$520 Home Depot). 417-362-0073. Willow Springs.

1965 FORD 1 TON TRUCK: 12' flat bed, six cyl, runs well, \$3,500. 1-573-729-0272. Salem.



CERTIFIED PRE-OWNED SPECIALS

Driving one of our certified pre-owned vehicles means you're well taken care of on the road and off.

GREAT PRICE & SO MUCH MORE!

<p>2020 Dodge Durango GT Plus</p> <p>P1356 AWD, V-6 3.6 L/220, 8-Speed Auto w/OD, 52,168 Mi.</p> <p style="font-weight: bold; color: blue;">\$43,950</p> 	<p>2018 Dodge Grand Caravan GT</p> <p>22066A FWD, V-6 3.6 L/220, 6-Speed Multi-Speed Automatic w/OD, 47,352 Miles.</p> <p style="font-weight: bold; color: blue;">\$26,450</p> 	<p>2020 Chrysler 300 Limited</p> <p>P1401 AWD, V-6 3.6 L/220, 8-Speed Auto w/OD, 43,274 Mi.</p> <p style="font-weight: bold; color: blue;">\$34,450</p> 	<p>2020 Chrysler Pacifica Touring L</p> <p>P1406 FWD, 9-Speed Automatic w/OD, 61,175 Miles.</p> <p style="font-weight: bold; color: blue;">\$36,675</p> 	<p>2019 Dodge Journey GT</p> <p>P1400A AWD, V-6 3.6 L/220, 6-Speed Multi-Speed Automatic w/OD, 54,548 Miles.</p> <p style="font-weight: bold; color: blue;">\$28,950</p> 
<p>2020 RAM 1500 Big Horn 4WD</p> <p>22011A Crew Cab, Gas/Electric V-6 3.6 L/220, 18,205 Mi.</p> <p style="font-weight: bold; color: blue;">\$45,900</p> 	<p>2020 Dodge Grand Caravan SXT</p> <p>P1438 FWD, V-6 3.6 L/220, 6-Spd Multi-Spd Auto w/OD, 53,013 Mi.</p> <p style="font-weight: bold; color: blue;">\$31,950</p> 	<p>2018 Dodge Challenger GT</p> <p>P1394 AWD, V-6 3.6 L/220, 8-Speed Auto w/OD, 50,534 Mi.</p> <p style="font-weight: bold; color: blue;">\$36,950</p> 	<p>2018 Jeep Wrangler JK Unlimited Sport S 4 WD</p> <p>P1418 V-6 3.6 L/220, 5-Speed Automatic w/OD, 60,091 Miles.</p> <p style="font-weight: bold; color: blue;">\$41,250</p> 	<p>2017 Chrysler 300S</p> <p>P1342 AWD, V-6 3.6 L/220, 8-Speed Auto w/OD, 34,694 Mi.</p> <p style="font-weight: bold; color: blue;">\$32,450</p> 

TAYLOR






705 Highway 63 South Rolla, MO 65401
573-364-1233
www.taylorchryslerrolla.com
Jamie Shelton, General Mgr.




RUGER PC9MM CARBINE: With scope, extra mag, loader, bought new. \$650. 417-844-43149. Springfield.

AUSTRALIAN SHEPHERD PUPPIES: 12 Weeks Old, UTDI shots, Will trade for farm animals or rehoming fee. 417-967-6493. Roby.

L3901 KUBOTA 4WD TRACTOR WITH LOADER: 38hp, hydrostat transmission. \$22,900. 417-270-1505. West Plains.

NEW POWERFUL MINI CROSSBOW: \$100. 573-327-9068. Desloge.

4 USED TIRES FOR SALE: 31X10.50X15, 6-ply, excellent trailer or implement tires. \$60. 573-743-6257. Steelville.

WTB GOOD SADDLE HORSE: 573-953-7589. Dixon.

BRAND NEW AREA RUGS: Good on ceramic and wood flooring. White fluffy with gray squares. \$125. Call between 8 am-8pm. 417-664-4278. Lebanon.

FOR SALE MASSEY FURGESON: With bucket loader. 573-759-7268. Dixon.

2002 F150: 4wd, automatic, power, extended cab, 180,000 miles. \$6,800. 314-972-2903. Mineral Point.

ORGANIC CHICKEN LITTER/HIGH CALCIUM LIME: Delivered trailer loads, \$120T. Spreader truck available. 800-807-9612.

1970'S MILLER BIG D4 DIESEL ARC WELDER: With custom trailer. \$6,500. 1-573-729-0272. Salem.

LOOKING TO BUY CUB TRACTOR: 573-759-7268. Dixon.

Can You Dig It?

We Can!

Specializing in Residential utility ditches for waterlines, electric lines, sewer line, etc.

T Campbell
And Sons Excavating

417-559-9339 • Lebanon



WE BUY AND SELL

new and used mobile homes



(417) 501-1061

Larry Heisel Rentals

Have Rock?

How about
3,500 lbs.
of Hammer

Call Larry!

573-779-1500

www.larryheiselequipment.com

Rental Available in 636 or 573 area code



We Deliver!

DUMP TRUCK WANTED: Older single axle. 573-465-1378. Rolla.

GERMAN SHEPHERD PUPPIES: 3 weeks, 2 males, 2 females. 417-733-7062. Niangua.



Cheyenne Acres
Horse & Tack
BUY - SELL - TRADE
by Rolla, MO
Call For Directions & Availability
Call Kip
573-368-9402



HORSEMAN MAGAZINES: Some as old as the 1940's. Information and Articles of all kinds about horses and horse related things. \$2.00 each 573-364-1779. Rolla.

THE HEART OF THE SPRING BOOK. A Bennett Spring Novel by Laura L. Valenti, 161 pages. \$6.50. 417-532-2045. (Leave message and phone number). Lebanon.

IHC 10FT. WHEEL DISK: \$1,800. 573-765-4406. Richland.

MECHANIC WANTED

Consolidated Electric Service is looking for an experienced mechanic. Work will include small engine repair to heavy duty diesels and Altec equipment. Welding, and fabricating experience, Missouri inspection license, Class A CDL and owning your own tools is a plus. Must have a clean driving record and be able to work in a drug free workplace. We offer competitive wages, paid health and dental, retirement, paid vacations and holidays. If interested, please call 417-588-9562 or send resumes to jburgessces@aol.com

120 2ND & 3RD PERIOD COWS: 3 to 7 year old, 1250 to 1300 lbs, dewormed, vaccinated, pregnancy checked, with trucking available. Will sell any number. 660-619-5190. Otterville.

ATHENS 8FT. OFFSET DISK: \$3,500. 573-765-4406. Richland.

AKC REGISTERED GERMAN SHORTHAIR PUPPIES: 14 weeks old. \$150. 417-838-3109. Niangua.

VICON 10FT. 3-POINT DISK MOWER: \$2,650. 573-765-4406. Richland.

WANTED: Old Pinball Machines and Juke Boxes. 573-424-7200.

5 MONTH OLD CHIHUAHUA PUPPIES: Male & female, UTD shots, Call for pricing. 417-250-0986 or 417-349-6076. Mtn. Grove.

Prep Your Field for Spring



15.50 BATWING
15.5 Cutter, 6 Year Gearbox Warranty, 6 Solid Tires, Quick Change Blade Design, Self Leveling Deck & Wings, 200 HP Gear Box, Floating Hitch
\$17,950



PSS60 Super Seeder
King of Food Plots, Comes with Opening Disk Seed Roller & Cultipacker Can do multiple seeds in one pass.
\$7,450
84" Demo Machine With Extra Seed Boxes Regular **\$15,500** Demo **\$11,500**



BW12
12Ft Batwing, 6 Year Gearbox Warranty, 35 Horse Minimum PTO, Sloped Deck, 160 HP Gearbox, Front & Rear Chains
\$12,750



RC72.20
6ft. 20 - 50 PTO hp, Rear steel band deflector and front rubber belt deflector Cuts up to 1-inch, 50 hp gear box 3-year gearbox warranty
\$2,450
RT 60.20 **\$2,200**



DS10.5
50 - 205 hp (pull-type) Cuts up to 3 inches, 205 hp splitter gearbox, 160 hp blade spindle gearboxes Sloped top, 10-gauge deck 1/4-inch side frame with 13-inch depth Safety shielded Cat 6 CV input driveline, Pivoting clevis hitch, Spring cushion axle, 6-year limited gearbox warranty.
\$11,950



RT72.4
Slip Clutch Gear Drive, 3 year Gearbox Warranty
\$3,250
RT 60.4 **\$2,750**



Pallet Forks
42" 2200 Lift Cap..... **\$1,100**
48" 4400 Lift Cap..... **\$1,150**



PRD7200
6Ft Finish Mower..... **\$4,750**

DIAMOND EQUIPMENT 4 MILES SOUTH OF WESTPHALIA ON HWY. 63 • (573) 455-2617
WWW.DIAMONDREQUIPMENT.COM
FREEBURG@DIAMONDREQUIPMENT.COM

WOODS
GET AFTER IT
ALL IN STOCK NOW!
Financing Available.
0% For 36 Months Or 1.99% For 48 Months
w.a.c.
Call For More Details!

MOSBERG PATRIOT 6.5 CREEDMORE: Dead ringer scope, new in the box with 120 rounds ammo. \$650. 417-241-9166. Grovespring.

FISHING SEASONS COMING: Get your rod and reels, \$5 and up. 417-589-8200. Conway.

RUGER PC9MM CARBINE: With scope, extra mag, loader, bought new. \$650. 417-844-4319. Springfield.

BIRDS OF MISSOURI FIELD GUIDE: By Stan Tekiela, 182 pages, \$5. 417-532-2045. (Leave message and phone number). Lebanon.



YOUR AD GOES HERE!

Add YELLOW Color For An Additional \$3 Per Reader Ad

All ads will include Phone Number (unless requested to be deleted by advertiser) and City Or Town, Phone Number with Area Code counts as one word. City or Town counts as one word.

RATE: 80¢ Per Word. All Classified Ads Require Payment Before Print.

(1) 80¢	(2) \$1.60	(3) \$2.40	(4) \$3.20
(5) \$4.00	(6) \$4.80	(7) \$5.60	(8) \$6.40
(9) \$7.20	(10) \$8.00	(11) \$8.80	(12) \$9.60
(13) \$10.40	(14) \$11.20	(15) \$12.00	(16) \$12.80
(17) \$13.60	(18) \$14.40	(19) \$15.20	(20) \$16.00
(21) \$16.80	(22) \$17.60	(23) \$18.40	(24) \$19.20
(25) \$20.00	(26) \$20.80	(27) \$21.60	(28) \$22.40
(29) \$23.20	(30) \$24.00	(31) \$24.80	(32) \$25.60
(33) \$26.40	(34) \$27.20	(35) \$28.00	(36) \$28.80
(37) \$29.60	(38) \$30.40	(39) \$31.20	(40) \$32.00

Place your Classified Ad TODAY!

417-532-9131 • 800-665-8875

Fax: 417-532-8140

Or Mail To: P.O. Box 192 • Lebanon, MO 65536

For your convenience we accept MasterCard, Visa, Discover or American Express



DEADLINE FOR CLASSIFIED ADS: FRIDAY 4:00PM!

Name _____

Address _____

City _____ Email _____

State _____ Zip Code _____ Phone _____

Ad Total \$ _____ X # Weeks _____ = Amount Enclosed \$ _____

JOHN DEERE 310C DIESEL BACKHOE LOADER: Runs nice. \$11,500. 573-765-4406. Richland.

750 GAL. PASTURE SPRAYER: Tandon axle, single jot, hyd pump. \$2,300. 573-765-4406. Richland.

WINCHESTER MODEL 94: 30-30, lever action. \$1,200. 417-533-9484. Niangua.

JOHN DEERE 460 ROUND BALER: Monitor, kicker, net wrap, wide pickup, 8700 bales, nice. \$28,500. 573-765-4406. Richland.

AVAILABLE STOCK MOBILE HOMES: Immediately, double wide and single, 3 and 4 bedroom 573-499-9993 columbiadiscounthomes.com

CUSTOM SAW MILLING: 417-533-4607. 417-664-1195. Lebanon.

Starnes Auto LLC
 22115 Rt. 66 • Lebanon, MO 65536
 417.718.2707 Cell
 417.588.3159 Office
 www.starnesauto.com

- 2002 FORD EXPLORER**
BLACK, VIN#2689, 226,XXX MILES\$2,250
- 2005 BUICK LACROSSE**
GOLD, VIN#7449, 89,XXX MILES\$4,950
- 2006 CHEVY SILVERADO 4DR 4WD**
MAROON, VIN#8612, 142,XXX MILES .**\$8,500**
- 2006 GMC SIERRA EXT CAB**
CHARCOAL, VIN#3673,
178,XXX MILES**\$8,500**
- 2007 PONT VIBE**
GREEN, VIN#2356,**\$3,950**
- 2008 FORD ESCAPE**
GRAY, VIN#8387, 148,XXX MILES**\$4,850**
- 2011 CADILLAC SRX**
BLACK, VIN#1300, 82,XXX MILES**\$11,200**
- 2011 CHEVY EQUINOX LT**
MAROON, VIN#6071,
153,XXX MILES**\$6,800**
- 2011 CHEVY EQUINOX LS**
GRAY, VIN#0426, 157,XXX MILES**\$6,200**
- 2012 CADILLAC SRX PERFORMANCE**
BLACK, VIN#6491, 126,XXX MILES**\$9,200**
- 2013 CHEVY CAPTIVA**
SILVER, VIN#9033, 126,XXX MILES**\$7,200**
- 2013 CHEVY EQUINOX**
BLACK, VIN#8234, 170,XXX MILES**\$7,200**
- 2014 GMC TERRAIN DENALI**
CHARCOAL, VIN#6925,
108,XXX MILES**\$12,500**

WE DO ALIGNMENTS!

FORD 5600 DIESEL TRACTOR: 60hp. Runs nice. \$7,850. 573-765-4406. Richland.

JOHN DEERE 2950 DIESEL TRACTOR: Cab & cold air, 85 h.p. 4,500 hrs. \$28,000. 573-765-4406. Richland.



For Outstanding Products & Service
AGRI-ENTERPRISES
 www.agri-enterprises.com

JOHN DEERE 566 ROUND BALER: Monitor, kicker. \$5,200. 573-765-4406. Richland.

IHC 1086 DIESEL TRACTOR: 130 hp. Cab & air. \$13,000. 573-765-4406. Richland.

JOHN DEERE 4230 DIESEL TRACTOR: Cab & air, 100 h.p. Qunol Range. \$13,500. 573-765-4406. Richland.

FORD 4610 DIESEL TRACTOR: Canopy 52 h.p. with Brushhog loader, 2000 hrs. \$12,500. 573-765-4406. Richland.

STOCK MOBILE HOMES AVAILABLE: We gottem, single and double, 3 and 4 bedroom! Call Tuffy 573-657-2176. amegamobilehomes.com

WE BUY HOMES & LAND FOR CASH!
 Get a fast, no-obligation cash offer!
MID MO LAND CO LLC
 CALL TODAY! 417-991-6445

IHC HOUGH 65 SERIES: Articulating 4-wheel drive loader. \$9,750. 573-765-4406. Richland.

JOHN DEERE 567 ROUND BALER: Monitor, kicker, net wrap. \$9,650. 573-765-4406. Richland.

Getting Chores Done
LAND PRIDE
does that.
RB15 SERIES REAR BLADES 17-40 HP 60", 74", 84" Widths

- Cat. 1 Hitch
- 7 Forward angles; 5 Reverse angles
- 12" Offset left or right
- 14" Moldboard height
- 1/4" Moldboard thickness
- Landscape Rake adaptable
- Optional storage stand

1-1/2 Miles South Of Licking, MO On Hwy 63
573-674-2203 • 1-800-653-7152
 www.agri-enterprises.com

HISTORY OF ST. ALBANS, MO. : H.B. \$20. 417-532-2045. (leave message and phone number). Lebanon.

WEATHERED BARN WOOD SIDING: 10" wide. 573-729-7226. www.pineridgerustic.com Salem.

LOG SIDING: 2X8 Pine/Western Cedar www.pineridgerustic.com 573-729-7226. Salem.

USED MOBILE HOMES: Call David at VILLA HOMES IN ROLLA 573-578-8072. Rolla.

TINY HOMES: We gottem 573-881-3283

FIREPLACE LOG GRATE: 28" in width. \$25 obo. 636-239-2695. Washington.

CALUS LOGGING
 20 YEARS EXPERIENCE
 Buying Standing Timber
 Walnut & Oak
 Joe Calus, Owner
 CERTIFIED 417-926-4606 • MTN. GROVE

WANTED TO BUY DODGE DIESEL TRUCK: Or Toyota Tacoma. Also, buying antique cars. 870-324-1154. Ash Flat.

BUYING MOBILE HOMES: Call David at VILLA HOMES IN ROLLA 573-578-8072. Rolla.

Get a great deal on getting more done.



Compact Tractors Cab available with select models 24.8-47.3 HP



Save big on L01 Series and LX Series compact tractors. The versatility to handle every job and a wide range of performance-matched attachments. Kubota tractors under 100 HP are rated #1 for reliability.* Stop in for a demo today.

\$0 DOWN 0% APR UP TO 60 MONTHS
PLUS
SAVE UP TO \$1,100

VISIT US TODAY FOR THIS LIMITED-TIME OFFER

Quarles Supply

3251 S Springfield Ave
Bolivar, MO 65613
417-777-2391

KubotaUSA.com

2020 Progressive Farmer Reader Insights Award for Fewest Reported Problems Overall in the category of Small Tractor (Under 100 Horse Power). Award based on 2020 Progressive Farmer Readers Insights Tractors Study. © Kubota Tractor Corporation, 2022. \$0 Down, 0% APR financing for up to 60 months available on purchases of new Kubota L2501 equipment from participating dealers in-stock inventory is available to qualified purchasers through Kubota Credit Corporation, U.S.A.; subject to credit approval. Example: 60 monthly payments of \$16.67 per \$1,000 financed. Customer instant rebates of \$700 are available on qualifying finance or \$500 on cash purchases of L2501 equipment. Additional instant rebate of \$400 is available with purchase of one new qualifying implement. Some exceptions apply. Offers expire 2/28/22. Terms subject to change. This material is for descriptive purposes only. Kubota disclaims all representations and warranties, express or implied, or any liability from the use of this material. For complete warranty, disclaimer, safety, incentive offer and product information, consult your Dealer or KubotaUSA.com.

ED MORSE COLLISION CENTER

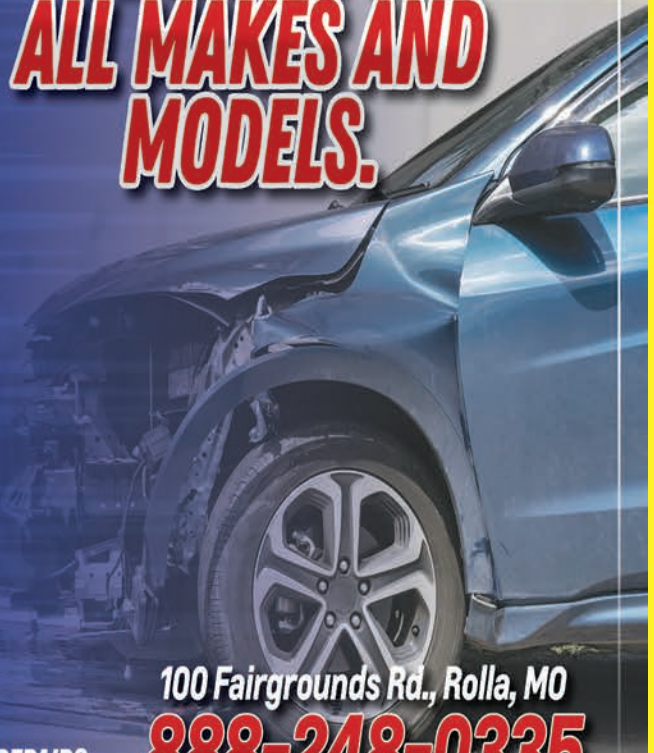
RollaCollision.com

FREE ESTIMATE'S, CAR RENTAL AVAILABLE.
I-CAR, ASE, ALUMINUM WELDING AND
REPAIR CERTIFIED TECHNICIANS.

OUR REPAIR SERVICES

- COLLISION REPAIR
- PAINT REPAIRS
- ALIGNMENTS
- DENT REPAIR
- WELDING
- SCRATCH REMOVAL
- WINDSHIELD REPLACEMENT
- PAINTLESS DENT REPAIR
- FRAME WORK
- BUMPER REPAIR
- FULL FRAME STRAIGHTENING
- ACCIDENT RELATED MECHANICAL REPAIRS

WE WORK ON ALL MAKES AND MODELS.



100 Fairgrounds Rd., Rolla, MO

888-248-0335

WE WANT YOUR TRADE.

NEW SHIPMENTS ARRIVING.

ED MORSE CHEVROLET BUICK GMC

ROLLA

FORMERLY FAIRGROUNDS AUTO PLAZA

NEW NAME. SAME TEAM.

100 Fairgrounds Rd., Rolla, MO

573-364-1002

EdMorseChevroletBuickGMCRolla.com