

FREE - TAKE ONE!

Vol. 28 No. 46

FEBRUARY 10, 2022

800-543-8271 • 800-665-8875

WEEKLY **TRADER** MAGAZINE



Find us on
Facebook

@myweeklytrader
AUCTIONS PG. 10

VISIT OUR NEW WEBSITE! MYWEEKLYTRADER.COM

0% APR ON MOST 2021 AND 2022 GM VEHICLES.



Length of contract limited. Must finance with GM Financial. Some customers may not qualify. Not available with lease and some other offers. Take new retail delivery by 2/28/22.

**WE WANT
YOUR TRADE.**

**NEW SHIPMENTS
ARRIVING.**

**ED MORSE
CHEVROLET
BUICK GMC**

ROLLA

FORMERLY FAIRGROUNDS AUTO PLAZA

NEW NAME. SAME TEAM.

100 Fairgrounds Rd., Rolla, MO

573-364-1002

EdMorseChevroletBuickGMCRolla.com

Land

For Sale

Laclede Co., MO • 480 Acres +/-



\$999,000

- Quiet county road
- Stoutland School District
- Secluded yet convenient location
- Large timber parcel with nice bottoms and very gentle lay to it
- Only 20 miles to Lake of the Ozark
- Trail system throughout property
- Great hunting parcel with abundance of wildlife
- Multiple ponds
- Wet weather creek
- Large ridges
- Buck torn bottoms
- White oaks, red oaks, and hickory trees
- 1/2-mile deeded easement over an old county road



WHITETAIL PROPERTIES REAL ESTATE

HUNTING | RANCH | FARM | TIMBER

Brian Utecht | 417-766-5595

Brian.Utecht@whitetailproperties.com

WHITETAILPROPERTIES.COM

Missouri's Top Land Specialist in 2014, 2015, 2016, 2017, 2018, 2019 and 2020





THE MOST COMPLETE LINE-UP IN THE INDUSTRY

Cutting widths from 36" to 104"



For Outstanding Products & Service

AGRI-ENTERPRISES

1-1/2 Miles South Of Licking, MO On Hwy 63

573-674-2203 • 1-800-653-7152 • www.agri-enterprises.com

THE HEART OF THE SPRING BOOK. A Bennett Spring Novel by Laura L. Valenti, 161 pages. \$6.50. 417-532-2045. (Leave message and phone number). Lebanon.

WEATHERED BARN WOOD SIDING: 10" wide. 573-729-7226. www.pineridgerustic.com Salem.

LOG SIDING: 2X8 Pine/Western Cedar www.pineridgerustic.com 573-729-7226. Salem.

STOCK MOBILE HOMES AVAILABLE: We gottem, single and double, 3 and 4 bedroom! Call Tuffy 573-657-2176. amegamobilehomes.com

USED MOBILE HOMES: Call David at VILLA HOMES IN ROLLA 573-578-8072. Rolla.

AVAILABLE STOCK MOBILE HOMES: Immediately, double wide and single, 3 and 4 bedroom 573-499-9993 columbiadiscounthomes.com

VOTED #1 BEST Preowned Car Dealership

TIM'S USED CARS

(573) 341-3828 • 1334 South Bishop (Hwy. 63) • Rolla, MO
Next to Hwy CC • www.tims-used-cars.com

<p>2016 RAM 2500 TRADESMAN Crew Cab, 4x4, 6.4 Hemi, Power Equipped, 77,xxx Miles Only \$34,500</p>	<p>2010 DODGE RAM 1500 TRADESMAN Quad Cab, 4x4, 5.7 Hemi, Power Equipped, 183,xxx Miles Only \$10,900</p>
<p>2013 CHEVY 1500 LTZ Crew Cab, 4x4, Z71, 5.3 V-8, Loaded w/ Options, 127,xxx Miles Only \$23,900</p>	<p>2006 CHEVY 2500 HD, LS Ext. Cab, 4x4, 6.0 V-8, Power Equipped Only \$9,800</p>

LARGE SELECTION OF CARS, TRUCKS, SUVs & VANS!

MECHANIC WANTED

Consolidated Electric Service is looking for an experienced mechanic. Work will include small engine repair to heavy duty diesels and Altec equipment. Welding, and fabricating experience, Missouri inspection license, Class A CDL and owning your own tools is a plus. Must have a clean driving record and be able to work in a drug free workplace. We offer competitive wages, paid health and dental, retirement, paid vacations and holidays. If interested, please call 417-588-9562 or send resumes to jburgessces@aol.com

BUYING MOBILE HOMES: Call David at VILLA HOMES IN ROLLA 573-578-8072. Rolla.

WANTED: Old Pinball Machines and Juke Boxes. 573-424-7200.

TINY HOMES: We gottem 573-881-3283

RUBBER & LEATHER BOOTS AND HIP WADERS. Men's 11, Women's 7, some insulated. \$15-\$40 obo. 636-239-2695. Washington.

HISTORY OF ST. ALBANS, MO. : H.B. \$20. 417-532-2045. (leave message and phone number). Lebanon.

SMALL SQUARE BALES: Good quality, \$5.50 per bale. 417-345-5634. Phillipsburg.

KUSTER LOGGING
BUYER of Standing Timber Oak and Walnut
Dozing Now Available
417-259-0047
 References Available



OUTDOOR FORCED AIR WOOD FURNACE: Fire proof, insulated, thermostatically controlled. Been made since 1986. Made by Harmons Heating & Cooling. 573-743-6943 or 573-247-5585. Salem.

BIRDS OF MISSOURI FIELD GUIDE: By Stan Tekiela, 182 pages, \$5. 417-532-2045. (Leave message and phone number). Lebanon.

WANTED TO BUY ANTIQUE CARS: Convertible, Corvettes, unrestored, motors, parts considered. 870-324-1154. Ash Flat.

KESSLING & SMITH FAMILY HISTORY BOOK OF WEBSTER COUNTY, MO: Also, Rader and Mace families. \$6.50. 417-532-2045. (Please leave message and phone number). Lebanon.

Can You Dig It? We Can!

Specializing in Residential utility ditches for waterlines, electric lines, sewer line, etc.

T Campbell And Sons Excavating
 417-559-9339 • Lebanon



EARN \$60,000/YEAR PART-TIME: In the livestock or farm equipment appraisal business. Agricultural background required. Home study course available. 800-488-7570 or www.amagapraisers.com

FIREPLACE LOG GRATE: 28" in width. \$25 obo. 636-239-2695. Washington.

MAHINDRA TRACTORS

IN STOCK

PACKAGE DEALS CAN BE BUILT TO FIT SPECIFIC NEEDS!



MAHINDRA 3640PST
 40 Hp, Power Shuttle Trans, Diesel Engine, 1 Remotes, Q/A Loader And Bucket, 4wd, -7 Year Warranty
TRACTOR/ LOADER ONLY \$31,000
 Package Includes 6ft Brush Cutter, 7ft Box Blade, 18ft Trailer
PACKAGE PRICE \$36,200



MAHINDRA EMAX22
 22 Hp, Diesel Engine, 4wd, Hydro Trans, Q/A Loader
TRACTOR/LOADER ONLY \$13,600
 Package Includes 4ft Brush Cutter, 4ft Blade, 16ft Toprail Trailer
PACKAGE PRICE \$17,950



MAHINDRA EMAX25
 25 Hp, Diesel Engine, 4wd, Hydro Trans, Q/A Loader
TRACTOR/LOADER ONLY \$15,750
 Package Includes 4ft Brush Cutter, 5ft Blade, 16ft Trailer
PACKAGE PRICE \$20,500



MAHINDRA 1635
 35 Hp, Diesel Engine, 4wd, Shuttle Shift Trans, 7 Year Warranty
TRACTOR/LOADER ONLY \$21,750
 Package Includes 5ft Brush Cutter, 6ft Blade, 18ft Trailer
PACKAGE PRICE \$26,950



MAHINDRA 1626
 26 Hp, Diesel Engine, 4wd, Shuttle Shift Trans, 7 Year Warranty
TRACTOR/LOADER ONLY \$19,900
 Package Includes 5ft Brush Cutter, 6ft Blade, 6ft Rock Rake, 18ft Trailer
PACKAGE PRICE \$22,950

THESE ARE CASH PRICES, DOES NOT INCLUDE TRADE OR FINANCE

DIAMOND

EQUIPMENT

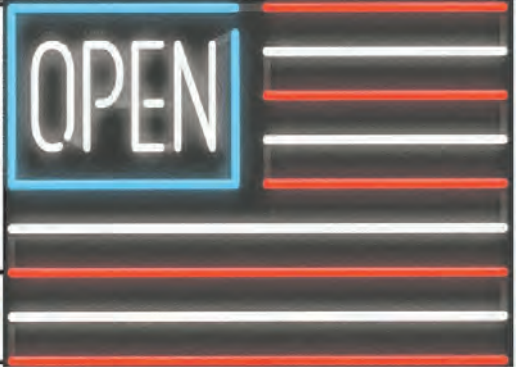
4 MILES SOUTH OF WESTPHALIA ON HWY. 63
 5 MILES NORTH OF FREEBURG • (573) 455-2617
WWW.DIAMONDREQUIPMENT.COM
FREEBURG@DIAMONDREQUIPMENT.COM

STORY & PICTURES BOOK OF OLD LINN CREEK: Haha Tonka and Camden County, by T. Victor Jeffries, 72 pages. \$5.00 postpaid. (417)532-2045. (Leave message and phone number). Lebanon.

LOADER BUCKET: 5 ft. good condition. \$200. 417-766-1991. Rogersville.

WANTED TO BUY DODGE DIESEL TRUCK: Or Toyota Tacoma. Also, buying antique cars. 870-324-1154. Ash Flat.

HAY: 2ND CUTTING. Orchard, Fescue & Clover Mix. Stored Inside. No Rain. 35 4x6 Net Wrapped Bales. \$55.00 each. 563-529-0612. Preston



Sale Ends February 28, 2022
 Seymour, Missouri 417-935-4201

Pole Barns & Post Framed Buildings!

Call for free quote, brochure & color chart.
 Other sizes also available.

23'x32'x10' \$7,870 Material Only \$9,420 Labor Included	23'x40'x10' \$9,000 Material Only \$10,935 Labor Included	30'x40'x10' \$11,150 Material Only \$13,670 Labor Included	40'x60'x12' \$19,875 Material Only \$25,275 Labor Included
---	--	---	---



Due to increased demand for our quality product we are currently hiring new barn construction crews. Contact Jeff

NOBODY, BUT NOBODY BEATS OUR PRICES!!!

10 ft. Slider • Engineered Trusses 8' O.C. • 2x6 Treated Bottom Wrap • Screws • 2x10 Top Wrap • 2x4 Purlins • Full 29 Gauge Steel • Plus 3 ft. Entry Door with Lock
 OPTIONS: Sidewall Heights on all Buildings 10', 12', 14' & 16'. Overhead Garage Door, Skylights, Insulation, Wainscoting, Insulated Vinyl Windows, Cupolas. Labor Rates Slightly Higher over 50 Miles from Seymour. Call for YOUR FREE QUOTE TODAY!!!

PAINTED WHITE, GREEN OR TAN METAL\$126.20	IN STOCK
10' - \$40.00 12' - \$48.00 16' - \$64.00	
MIX & MATCH METAL\$59.99	
8' - \$15.20 10' - \$19.00 12' - \$22.80	
GALVALUME METAL\$99.99	
10' - \$31.66 12' - \$38.00 16' - \$50.66	
GALVANIZED CORRUGATED METAL SOLD OUT!	
8' - \$9.84 10' - \$12.30 12' - \$14.75 16' - \$19.67	

40yr Painted Metal
Call

KNOTTY PINE DOORS
 Starting at
\$164.99

LP SMARTSIDE T-5 LAP B GRADE \$43.59/SQ

Car Siding!
 1x6 White Pine Siding **79¢** in ft
 1x8 White Pine Siding **\$1.05** in ft
 * 4 Profiles to choose from!
 Broken Bundles Add 10¢ Per Ft.

4x8 Sheeting
 Less than full units Add \$1 per sheet

3/8" Beaded Paneling	\$17.99
7/16" T111 Siding Paneling	\$23.99
1/2" Plywood	\$50.00
3/4" Plywood	\$29.99
3/16 Pegboard	\$12.99

LOTS OF MATERIAL AVAILABLE FOR THOSE IN HOME PROJECTS!

REAL WOOD SIDING
 2x6 Log Siding - 1.59¢ In ft
 1x8 Beveled Cedar from- 79¢ In ft
 T1-11 Siding from \$28.99

NEW PACKAGE HOMES

2x6—16" on center-Exterior Stud Walls
 Residential Roof Trusses-2' on center
 4/12 pitch with 1' over hang
 40 year Painted Metal roofing in 20 Different Colors
 Profile Ridge Vent - Ventilated Ridge Cap
 Vinyl Center Vent Soffit
 Color Matched Metal Fascia & Gable Trim
 2 - 3' 6 Panel Entry Doors
 4 - 3'x4' Vinyl Insulated Windows

Shown with Available Options
 Your Choice of either:
 Stock 3/8" T111 Siding w/1x4 Pine Window & Door Trim - OR -
 7/16" OSB & House Wrap ready for other finish options

ALL FIGURED FOR SUITABLE CUSTOMER SUPPLIED SLAB OR SUB-FLOOR

Price for Basic Materials Package (No Labor at this Time)

20x24(480 sq. ft.)	20x32(640 sq. ft.)	20x40(800 sq. ft.)	28x40(1120 sq. ft.)	28x48(1344 sq. ft.)
\$12,630	\$14,500	\$16,320	\$20,120	\$22,360

DECK PACKAGES
 Materials Only

8x8.....\$395.95	10x12.....\$684.99
10x10.....\$569.49	10x16..... \$849.99
12x12.....\$799.99	12x16.....\$1069.99

QUAKER Now Stocking Quaker Vinyl Windows

2030 \$ 135.99	3030 \$157.99
3040 \$173.99	3052 \$189.99
3040Twin \$379.99	3052Twin \$419.99



LUCKY DISCOUNT LUMBER
 417-935-4201
 455 State Hwy C • Seymour MO 65746
 www.luckydiscountlumber.com



TRUE MODULARS: 30 to 60 day delivery available, 3 and 4 bedroom 573-657-7040 chateauhomes.net

QUALITY USED SADDLES WANTED: Will pay cash! George's Tack, Saddles & Feed. 573-346-7866. Camdenton.

L3901 KUBOTA TRACTOR: 4wd with Loader. 38hp. Hydrostat Transmission. \$22,900.00. 417-270-1505. West Plains.

0% for 4 Years



HEATMOR
Outdoor Wood
Furnace

as low as **\$208** per month

HEATMOR MIDWEST
Licking, MO 65542 • 573-674-2962



COMMERCIAL ROOFING

5795 Highway 5
Hartville, MO 65667

Roof Restoration Specialists
Why replace? Extend the life of your existing roof.

(417) 241-3653
www.dncoatings.com

MISSOURI GUN CO LLC



Your Reloading Headquarters for Southern Missouri.

W, Th, F: 10am-6pm
Sat: 10am-2pm
Sun, M, T: CLOSED

BUY. SELL. TRADE.
516 Ozark St., Cabool, Mo. • 417-962-2666

I BUY.....used mobile homes. Call or text 573-338-6250 or email GregS.CH@outlook.com

WINCHESTER MODEL 94: 30-30, lever action. \$1,200. 417-533-9484. Niangua.

BEST OF THE BEST FROM MISSOURI COOKBOOK: Selected recipes from Missouri's favorite collection. \$4.50. 417-532-2045. (Leave message and phone number). Lebanon.

REGISTERED HEREFORD & ANGUS BULLS: Home raised, Some Show-Me Select Qualified. 573-701-7828. Belgrade.

CUSTOM SAW MILLING: 417-533-4607. 417-664-1195. Lebanon.

TRUCKERS & LOGGERS: Keep your Diesel engines running smooth this winter by adding Diesel plus. Extends the life of injectors and fuel pumps. For more info. Call 417-241-3653.

FIREARMS: Professional Repair, Restorations and Appraisals. Baron's Gunsmithing. 573-363-5801, Camdenton.

A KID GROWING UP ON ROUTE 66 BOOK: By Bill Wheeler, Waynesville/Pulaski County area, many photos. \$6.50. 417-532-2045. (Leave message and phone number). Lebanon.

POOL TABLES: Installations, moves, recovers, repairs, accessories, etc. 573-646-1700.

NEW FENDER GUITAR: 6 string. Acoustic. Wonderful sound. Beautiful finish. \$195.00 573-364-7465. Rolla

KITCHEN FAUCET MOEN: Single lever, sprayer, new cartridge. \$45 obo. 636-239-2695. Washington.



KENT

EnergiLass EcoTub
Biodegradable Container
200lb EcoTub

EnergiLass
250lb

Farm Dog Feed ONLY \$18/Bag!!
While supplies last

Portable Feed Bins Ready For Your Farm!

Stocked & Ready for all your Livestock Feed Needs!

"DOING BUSINESS ON OUR WORD AND A HAND SHAKE"
Located in the Heart of the Amish Mennonite Community!
417-345-8600 • 19 Prairie Lane, Buffalo

Built on Trust
EST. 1927

Kropf Feeds

energifeeds.com

BOOST YOUR ONLINE PRESENCE TODAY!

WE MAKE DIGITAL ADVERTISING SIMPLE

Don't you just hate it when someone talks over your head? We hate it too! That's why our mission at LC Digital is to simplify digital advertising for businesses.

We will start with a little research to help you identify the best types of digital ads for your business, then we will design a strategy that will fit your budget. We promise we will make it simple for you to understand.



WE NEED LISTINGS!

If you are considering selling your property, let our land agents & our nationwide marketing work for YOU!!

CALL TOLL FREE: 844-974-1850

YOUR LAND AND FARM EXPERTS!

Morgan Co-13.36 Acres

\$72,000



13+/- Acres of Recreational Property with open build site for a dream home or hunting cabin overlooking a gorgeous view of Haw Creek. This property checks all the boxes and is a turnkey small acreage set up for someone wanting seclusion, live water, mature timber, open land for a build site, and great access off county road. Driveway was recently installed with new culvert last summer. Power goes through property and has high speed internet. This property will not last long! If you are interested in setting up a private showing, please **contact Trenton Scott with Missouri Land Company @ (660)-351-3201 or (660)-668-4868. Thank you!**

Benton Co-74.34 Acres

\$140,000



Have you been looking for a recreational tract close to the Lake of the Ozarks? This right at 75 acres is big enough for about anything. The lake is just right down the road from this piece. Good gravel road access on two sides. Electric is close by, might have to run a pole or two. Property has been logged in the past couple years, with a little clean up, it will make a great place for a home or cabin. Lots of wildlife out here for deer and turkey hunting. Give this place a few years and it will grow up and be a place to enjoy with your family for years. Other tracts available as well, please see our other Wendy's Ridge listings. **Call Mike Stoner at 573-774-9775 Cell.**

**MISSOURI
LAND
COMPANY**

Farm, Home & Hunting Properties

**Rolla Office:
12647 S. Hwy 63, Rolla
573-308-4868**

**Cole Camp Office:
14981 Centerline Ave.,
Cole Camp
660-668-4868**

www.missourilandco.com • 660-668-HUNT

Toll FREE number for both locations 844-974-1850

NEW SCHWINN STINGRAY BICYCLE: Monkey Handlebars. Banana seat. Rear Racing Slick. \$145.00. 573-364-7465. Rolla.

LIONEL TRAIN SET: Steam engine, tender, caboose and other car, track and transformer. \$195. 573-364-7465. Rolla.

ALLIS CHALMERS D17 SERIES 3: Propane with hydraulic bucket loader. \$2,950. 573-353-6317. Centertown.



CENTRAL BOILER CLASSIC EDGE
TITANIUM HDX

26% Tax Credit on EPA certified Central Boiler Classic Edge HDX models and installation. Call today to learn more!

Outdoor Wood Furnace Central Boiler.com

The Classic Edge 360, 560 and 760 HDX are U.S. EPA Certified

Yarbrough Equipment Sales & Services, Inc.
9776 E. State Hwy 00 • Strafford, MO
417-736-2303 • 1-866-286-6901 • www.yarbeq.com

OMAR'S LOGGING & DOZING

⇒ Oak & Walnut
⇒ Excellent Prices
Amish Owned & Operated



LEAVE MESSAGE: 417-741-0440
Hartville & Surrounding Areas



Cheyenne Acres
Horse & Tack
BUY - SELL - TRADE
by Rolla, MO
Call For Directions & Availability
Call Kip
573-368-9402

IT'S A GAS SWAP MEET: Gas & Oil Collectibles, Advertising, Coin-Op, NO auto parts! Saturday, February 12th, 8 am – noon. Cowan Civic Center, Lebanon. General Admission \$5. For more information, call Nancy 573-864-1336. itsagasswapmeet.com

DARDEN PROFESSIONAL TIMBER HARVESTING, BUYING STANDING TIMBER: Great prices, improve wildlife habitat and improve forest health. State Certified & Fully Insured! 573-247-4808 or 573-739-1122. Salem.

HEARTH CRAFT GLASS BI-FOLD FIRE PLACE DOORS: Antique brass. \$200 obo. 636-239-2695. Washington.

WEIRD MISSOURI BOOK: Your travel guide to Missouri's Local Legends and Best Kept Secrets. HB, 255 pages, \$12.50. 417-532-2045. (Leave message and phone number). 417-532-2045.

CERAMIC CANISTER SET: With cutting board that fits in kitchen counter top. Various species of ducks. Set \$40 obo. 636-239-2695. Washington.

FAINTING GOAT BABIES ON BOARD: 1ST kids just arrived. All colors & patterns. 100% pure bred. Check website www.greenacresvillage.com or text 573-216-7796 for more info. Lake of the Ozarks.

CHOCOLATE LAB PUPPIES: 4 males, AKC papers available, 2-5-22 when weaned. Call to see puppies and meet parents. Pick your puppy. \$1,000. 541-404-0277. Lebanon.

ACA POODLE PUPS: 417-664-1637. Grovespring.

4 MICHELIN TIRES: No patches, 245/60/18. \$50. 417-532-2344. Lebanon.



Call to Order 417-993-3017

Meadowview Dutch Market

Discount & Surplus Groceries • Prices Subject to Stock on Hand

<p>DELI SPECIAL</p> <p>BACON CHEESE REG. \$5.89 LB. SALE \$5.39 LB.</p> <p>HONEY TURKEY BREAST REG. \$5.99 LB. SALE \$5.49 LB.</p> <p>TRY our Fresh Homemade DELI Sandwiches: TURKEY, HAM, ROAST BEEF, ITALIAN, BLT'S, PULLED PORK AND BLT PULLED PORK (MADE YOUR WAY)! COME IN OR CALL to order! ALSO Custom Deli trays! Veggie OR FRESH Meat-N-Cheese!</p>		<p>QUICK & EASY MEALS</p> <p>FULLY COOKED MEATBALLS</p> <p>SALE! \$1.50 14 OZ.</p>	
<p>SCRAPPLE IN THE DELI Reg. \$3.49 lb.</p> <p>SALE! \$2.79 LB.</p>	<p><i>Dr. Faygo</i> Soda</p> <p>\$1.99 8 CT. PK.</p> 	<p><i>Skin-On</i> Potato Wedges</p> <p>79¢ LB.</p> 	<p><i>Velveeta</i> Cheese</p> <p>\$2.50 16 OZ.</p>
<p><i>Eckrich</i> Jalapeno & Cheddar Smoked Sausage</p> <p>\$1.49 14 OZ.</p> 	<p><i>Charcuterie Tasting</i> Board Snack Tray</p> <p>Reg. \$2.99 99¢ 12.5 OZ.</p>	<p><i>Celebration</i> Cake</p> <p>99¢ EA. 18 OZ.</p>	<p>Corn Dog</p> <p>\$1.89 LB.</p> 

MEADOWVIEW DUTCH MARKET
417-993-3017 Hours: Mon-Thurs 8-5pm
Fri 8-6pm • Sat 8-5pm
23 Miles West on Hwy 64 • Right on T Hwy
9 miles • Left on E Hwy 1 mile on Left

NOW ACCEPTING CREDIT, DEBIT CARDS & EBT

DUTCH COUNTRY STORE, LLC
573-378-4395
Hours: Mon-Thurs 8-5pm
Fri 8-6pm • Sat 8-5pm
5 miles East of Versailles off Hwy C on Kelsay Road

Land Auction

108^{+/-} Acres

ONLINE BIDDING ONLY
7246 COFFEY HOLLOW RD.
MACKS CREEK, MO.
(HEART OF THE OZARKS)

*North East of Springfield, Mo
 *South West of Jefferson City, Mo.

BIDDING ENDS: (SOFT CLOSE)
THURS. MARCH. 3 @ 6:00 P.M.

OPEN HOUSE: Sat. FEB.
19 & 26 @ 1:00-3:00 P.M.

SELLING IN 1 TRACT!

Legal: Sect. 35 TWP. 38N R19W
 Camden County, Mo.

TAXES: \$1,940.00

PIN: 15-7.0-35.0-000.0-000-006.000
 Macks Creek School District



TRACT 1: 108 +/- ACRES (w/ Home & Outbuildings)

This farm consists of Timber & Pasture on bottom part of farm and up on the ridge. Creek runs through bottom part of farm. Farm has 4 strands of barbed wire fence (area's need repaired). Abundant wildlife! Niangua River & Lake of the Ozarks close by! • **HOME:** Built in 1994, 1.5 Story, 2,677 sq ft., (3) Bedroom, (2) Bath, Attached 2 car garage • **MOBILE HOME:** 1987, 672 sq ft., (2) BR., (1) bath. • **OUTBUILDINGS:** Pole Barn, 40'x46', built in 2001 • Pole Barn w/ lean-to on each side, 47'x48', built in 1994 • (2) Wood Framed Buildings, 46'x126', built for Hog Buildings in 1996, 1 of these buildings has roof caving in on east end. Not been used for past 5 yrs. Lagoon is still at east side of buildings. • Detached Garage, 24x24, built in 1990 • Water Well: Well drilled on farm in 1990. ENTIRE PROPERTY NEEDS A HAIRCUT & SHAVE! BEAUTIFUL SETTING!! Co-Broker participation welcome, please contact Cory. Property is being sold by the acre based on taxable acreage

DANIEL SCHMIDT & SHAWN SCHMIDT, OWNERS

Cory Craig

AUCTIONEER
217/971-4440

www.corycraig.com

Register to bid, view catalogue & terms @ corycraig.hibid.com

AUTOMOBILES - TRACTOR - FARM IMPLEMENTS - TOOLS - FURNITURE - MUSICAL INSTRUMENTS - MISC AUCTION

SATURDAY FEBRUARY 12th, 2022 • 10:00AM

LOCATED: 618 STARGRASS RD, OZARK, MO

FROM HWY 65 SOUTH OF OZARK TAKE EXIT F & BUS 14, GO EAST 3 MILES TURN SOUTH ON HWY W, GO 8/10 MILE TURN EAST ON STARGRASS RD, GO ½ MILE TO AUCTION ON LEFT. BREAKFAST, LUNCH & RESTROOMS AVAILABLE.

FOR PICTURES SEE WEBSITE OR AUCTION ZIP.COM
MOST OF AUCTION HELD INSIDE. 2 AUCTION RINGS WILL BE RUNNING

AUTOMOBILES - DIRT BIKES - TRACTOR FARM IMPLEMENTS

1935 FORD SEDAN W/5" CHOP TOP, 350 MOTOR, AC, PW, STEREO, RACK & PINION STEERING—2011 SUBURBAN LTZ, SUNROOF, LEATHER, NEW TIRES & WHEELS, 248,000 MILES—2001 CADILLAC SLS, NORTH STAR, LEATHER, WATER PUMP LEAKS, 149,000 MILES—2008 JEEP WRANGLER UNLIMITED 4 DOOR, W/ HARD TOP, V6, PW, PL, 4 WHEEL DRIVE 200,000 MILES—1995 CHEVY SHORT BED PICKUP 4 WHEEL DRIVE, 350, ½ TON, GOOD TIRES, 197, 220 MILES—1985 CHEVY ½ TON PICKUP, V8, 4 WHEEL DRIVE, RUNS & DRIVES GOOD—2008 FORD F150 LARIAT CREW CAB, 4 WHEEL DRIVE, ALL POWER, HEATED SEATS 5.4 AUTO, GOOD TIRES 300,000 MILES—1969 CHEVY C/60, DUMP TRUCK, 10 SPD, 12' BED WITH TELESCOPIC HYD HOIST, GOOD TIRES—JEEP GRAND CHEROKEE V8 5.2 LITER ROCK CRAWLER, NO TITLE—CJ7 JEEP HARD TOP & DOORS ROCK CLIMBER, NO TITLE—200 SUZUKI DR DIRT BIKE, NO TITLE—125 SUZUKI DR DIRT BIKE, NO TITLE—2010 CARGO TRAILER V FRONT, 10' 7"X6' W/FOLD DOWN RAMP—TYM T503 TRACTOR W/ROLL CAGE, 4 WHEEL DRIVE, W/TX 5000 LOADER, REAR HYD, HYDRO STATIC, QUICK CONNECT FRONT BUCKET, 579 HOURS—HOWSE 7' 3 PT BRUSH HOG—WOODS 6' BRUSH HOG—3 PT POST HOLE DRILL—LAND PRIDE 3 PT 8' BLADE—FORK LIFT FORKS—2) 6' GILL BOX BLADES—JET SKI DOCK LIFT—SM BOAT W/MARINER 4 HP BOAT MOTOR—SNOW PLOW—ELECTRIC CLUB CAR GOLF CART—2) TRUCK FUEL TANKS—20' SHIPPING CONTAINER—SHRINER CAR

TOOLS

GENERAC POWER SYSTEMS GENERATOR HOUSE MODEL PROPANE, MODEL 0052541—ACCU-TURN TIRE CHANGER 326S—KOBALT 80 GAL 4 ½ HP AIR COMPRESSOR—SPEED AIRE AIR COMPRESSOR 60 GAL 6 HP—US GENERAL AIR COMPRESSOR 60 GAL, 3.5 HP—SUNRISE MODEL SBM96 TIRE BALANCER—DELTA 10" MITER SAW—PRO TECH 10" TABLE SAW—HITACHI 10" TABLE SAW—WORM DRIVE SAW—SCHUMACHER BATTERY CHARGERS ON WHEELS—14" CHOP SAW—10" MITER SAW—4 ½" & 5" GRINDERS—JIG SAWS—BUFFERS & GRINDERS—CORDLESS DRILLS—HITACHI FRAMING NAILER—1 LOT AIR TOOLS—10 DRAWER RAM/PRO TOOL BOX—WIRE FEED 110 VOLT WELDER—HUSKY STACK TOOL BOX—KOBALT 5 DRAWER WORK CABINET—1 LOT HYD FLOOR JACKS—JACK STANDS—PARTS WASHER—OIL DRAIN DOLLY'S—SHOP WORK CABINETS—PORTABLE PROPANE HEATER—CAR RAMPS—CREEPERS—LOG CHAINS—4 WHEEL DOLLY'S—CHERRY PICKER—KNAACK JOB BOX—2) HONDA PRESSURE WASHERS—2) ELECTRIC POWER PRESSURE WASHERS—ALUM FOLDING LADDER—6' FIBERGLASS LADDER—6" VISE—STORAGE WOODEN CABINET—STAINLESS SHOP TABLE ON WHEELS—OIL ELECT HEATER—POST DRIVER—HAND SAWS—TIMING LIGHT—RIDGID SHOP VAC—DEWALT SKIL SAW—HATCHET & HACK SAWS—6 DRAWER TOOL BOX—6" BENCH GRINDERS—EXT CORDS—UTILITY PUMPS—12 VOLT POWER SPRAYER—PAINT GUNS—LONG HANDLE TOOLS—ENGINE STANDS—WORK CART—PRY BARS, GAS CANS, PUSH BAR—REMINGTON BULLET HEATER—12 VOLT BATTERIES—4 WHEEL CART—PROPANE SPACE HEATERS—OIL DRAIN SEAT—PORTA BAND SAW—SKIL SAWS—1 LOT CORDLESS TOOLS—CASTORS—AIR HOSE—JACK STANDS—SHEET ROCK SPRAY HOPPER—AIR BRAD NAILER—ELECT IMPACT WRENCH—LEVELS—PIPE WRENCHES—HAMMERS, SCREWDRIVERS, SCREWS, FASTENERS, ANCHORS, PLIERS—ORGANIZERS—TOOL BOXES—HEAT BUSTER FAN—SPACE TURBO HEATERS—IMPACT DRIVERS—DIE GRINDERS—BUTTERFLIES—AIR CHISEL—HEAT GUN—SAW ZALLS—LUG WRENCHES—GREASE GUNS—PROPANE LANTERNS—SPOT LIGHTS—RATCHET STRAPS—CHAIN COME ALONG—2) LG TORCH SETS—SAW HORSES—PROPANE BOTTLES SM & LG—TIN SNIPS—DRILL BITS—WOOD CLAMPS—1 LOT SOCKETS & WRENCHES ALL KINDS—VALVE SPRING COMPRESSOR—WELDING CLAMPS—JUMPER CABLES—ROLL AROUND

SHOP STOOLS—ALL KINDS BATTERY CHARGERS—STEP STOOL PLATFORM—CRAFTSMAN 3 GAL 1.5 HP AIR COMPRESSOR—AIR TANK—16' ALUM EXT LADDER—METAL STORAGE CABINET—CAULKING—STAPLE GUNS—STIHL 028 WOOD BOSS CHAIN SAW—SEVERAL CHAIN SAWS—3) STIHL BLOWERS, BG55,65,75—SEVERAL WEED EATERS—POLE SAW—B&D HEDGE TRIMMER—PNEUMATIC OIL EXTRACTOR—

CAR PARTS - METAL SIGNS - BOATING MISC

JEEP RUBICON BUMPERS—LG LOT TIRES & WHEELS—CJ7 LEAF SPRINGS FOR 6" LIFT—02 CHEVY SEATS—EQUILIZER HITCHES, TRAILER HITCHES & BALLS—PICKUP TOOL BOXES—CAMPER SHELL—RANGER SX5 DOORS—TJ SOFT TOP DOORS & BIKINI TOPS—ALUM RACING SEATS—WHEEL SIMULATORS—550 FORD WHEELS—CHROME BED RAILS—MISC AUTO PARTS—BIG BLOCK ALUM VALVE COVERS—MISC CAR CLEANING POLISH—OLD GAS PUMP—SEVERAL METAL SIGNS—MONROE SIGN—PON TOON BOAT COVER—1 LOT LIFE JACKETS—BOAT ANCHORS—BOAT PROPS—BOAT BUMPERS—BOAT LADDER—SKIS—GOLF CART COVER

FURNITURE

WHIRLPOOL DUET STEAM FRONT LOAD WASHER/DRYER W/PEDESTALS—MICROFIBER SOFA W/END RECLINERS, 2 MATCHING ROCKER RECLINERS—MICROFIBER SWIVEL BARREL CHAIR—TEMPUS FUGIT GRANDFATHER CLOCK—COFFEE/END TABLE SET—5) BAR STOOLS—5 PC DINETTE SET—HALL TREE—WOODEN OAK DESK—2) SWIVEL RATTAN CHAIRS, 3 MATCHING BAR STOOLS—ARMOIRE—NIGHT STAND—QN SIZE BED W/NIGHT STAND—4 PC PINE KING SIZE BEDROOM SET—ANTIQUE BUFFET—ANTIQUE TRUNK—TABLE LAMPS—5 PC IRON PATIO SET—BAKERS RACK—WOODEN WALL PLAQUES—SEVERAL WALL PICTURES—CANVASS WALL PICTURES—FIRST TIME & CO WALL CLOCK—LG WALL CLOCK—2) 19" & 26", 42" FLAT SCREEN TV'S—5X7 RUGS—OIL LAMPS—BISSELL VACUUM—BISSELL PRO HEAT CARPET SHAMPOOER—ASHLEY WOOD STOVE—WAGNOCK HERSEY FREE STANDING PELLET STOVE—PROPANE STOVE—MINI FRIDGE

MUSICAL INSTRUMENTS

1971 DULCIMER FROM MCSPADEN DULCIMER SHOP MOUNTAIN VIEW ARKANSAS—ANTQ BOW & FIDDLE—EARLY 1950'S KAY FLAT TOP GUITAR (SUNBURST)—SM SIGMA FLAT TOP NATURAL TOP GUITAR—99-2000 CORT GUITAR W/HARD SHELL CASE, NICE

MISC

HORIZON HZ SERIES TREADMILL—18" RECHARGEABLE ERODRONEX18, NEW IN BOX—CORELLE DISHES—LUSTRE CRAFT PANS—PYREX BAKING DISHES—MAJESTIC WARE BY ONEIDA DISHES—PLASTIC WARE—BAKER HART & STEWART POTS & PANS—CANDLE WARMERS—MISC DECOR, ANGLES, FLORAL ARRANGEMENT—COOLERS—1 LOT BOOKS—FIRE PIT—PORCH SWING—2) BRINK MAN BAR B Q PROPANE GRILLS—ROOSTER DECOR—CHRISTMAS & FALL DECOR—BIRD HOUSES—MILK CANS—WAGON WHEELS—WASH TUB—WELL PUMP—SPIRAL STAIRCASE—BAG CHAIRS—COTS—6X6 CCA POST—WATER FIRE EXT—STUFFED MINK—GOLD WING HELMETS—ROAD BARRICADES—1/2 WHISKEY BARREL—2 CASES KING & QUEEN SIZE NEW BAMBOO SHEETS, 6 PC 2000 THREAD COUNT—12 DOZEN TRUMP CAPS, NEW

OWNER: CHARLEY & KAREN GENTILE

MELTON AUCTION & REALTY CO LLC



www.MeltonAuction.com | Roger@MeltonAuction.com
 Roger Melton | Nixa, Mo | 417-830-0153 or 417-725-1801
 Brad Cole | Nixa, Mo | 417-840-2950
 Tanner Foster | Galena, Mo | 417-840-5519

PUBLIC AUCTION

Saturday, February 12 at 10:00am

Bosserman Community Centerley
5814 Co Rd 3250, Peace Valley, MO

Directions: from West Plains: East Hwy 160 to North 17 Hwy. North on 17 Hwy to W Hwy. Right on W Hwy to County Road 3250 in Peace Valley. Right on CR 3250 to Bosserman Community Center (Old Peace Valley School) Watch for Reid Auction Signs This is a large selection of antiques and collectibles from an estate in Jordan Arkansas

FURNITURE Antique Buffet, Old School Desk, Camel Back Trunks, Antique Round Side Table, Beveled Glass Cabinet, Marble Top Gentleman's Dresser, Wood Footstool w/Needlepoint Top, Old Dresser w/3 Drawers, Green Dresser w/Mirror, Metal Cabinets, Radio/Stereo Cabinet, Ornate Cabinet, Primitive Tables, Old Stereo, Plant Stands, Old Standard Broadcast Radio, Woven Funeral Basket, Wooden Childs Rocker, Wood Child's Red Swing, Primitive Cabinet, Display Cases, Lead Stained Glass Windows, Bentwood Childs Chair, Primitive Wooden Shelves, Folding Wooden Chairs, Old Storage Cabinet, Sewing Display Cabinet, Jenny Lind Baby Bed, Drop Leaf Table, Wood & Glass End Table, Oak Dining Table, Small Metal Top Drop Leaf Table w/Drawer, Chair/Stool, Mid Century Chair, Floor Lamps, Wood Parts Cabinet, Fold out Step Stool. **COLLECTIBLES** Old Mill/Grind Stone (Hexagon Shape), 3 Metal Coca Cola Signs, RC Cola Sign, Glass Gas Pump Top, Milwaukee Beer Sign, Metal Soda Fountain Stools, Metal Eveready Thermometer, Cast Iron Items, Vintage Samsonite Luggage, Chenille Bedspreads, Vintage Jewelry, #80 Dazey Butter Churn, Dazey Football Churn, Old Glass Butter Churns, Cigar Boxes, Cigar Press, Vintage Shoes, Hats, Hat Boxes & Clothes, Fur Coats, Hat Forms, Set of Metal Coke Trays, Embroidered Samplers & Wall Art, Buttons, Marbles, Cast Iron Vase, Pepsi Crate, Wood Egg Crate, Chicken Crates, Bordon Milk Bottles, Brass Buckets, Unopened Metal Log Cabin Syrup Can, Coffee Jars, Blue Bottles, Green Jars, Wire Egg Basket, Antique Towel Rack, Wood Shaker Dough Board with Wood Rolling Pin, Cigarettes Mirror, #10 Blue Ribbon Brand Crock, #5 Red Wing Crock, #4 Crock, Brown Jug Crock, Several Other Crocks including Several Crock Bowls, Wood Dillan Food Stores Banana Box, Masters Of The Universe Lunch Box w/Thermos, Flour Sacks, Metal Coke Cooler, Old Post Cards, Wood Dough Bowl, Coke Collectibles, Coke Clock, Pink Granite Pan, Quilts, Cross Cut Saws, Cream Can, Metal Lard, Baking Powder & Potato Chip Cans, Lots of Bottles of all shapes and sizes, Metal Wash Boards, Iten Biscuit Company Shelf, Antique Library File Card Cabinet, Old Judge Coffee Jar w/Metal Lid and Paper Label, Cigar/Cigarette Silks, Cigar/Cigarette Bulgaria, Cuba, Italy & Corea Flannels, Cigar/Cigarette College Flannels, Pair of Hand Stitch Peacock Pictures, 9 Pieces of Hull Vases, Green Shawnee Lamp, Old Coke Bottles, Coffee Bin Container/Dispenser, Old Baby Stroller, Lanterns, Wood Ice Skates, Several Salesman Samples of Sewing Machines, Straight Razor and Blades, Hot Nut Dispenser, Spice Rack with White Jars/Green Lids, Lots of Jewelry, some Vintage, some Costume, Feed Bag Thread Holder, Spry Shortening Can, Remember the Maine Pink glass w/Old Marbles, December 1913 Police Gazette Magazine, March 1914 Police Gazette, February 1969 #31 Bonanza Comic Book, Old Mickey Mouse items. **KITCHEN ITEMS** Blue Crock Bowls, Old Cookie Cutters, Griswold Corn Pone Pan, Griswold Dutch Oven, 75 Anniversary of NAEA Lodge Cast Iron Skillet, Sunkist Lemon Squeezer, Sifters, Picnic Baskets of all Sizes, Green Speckled Bowls, Granite Pans, Tin Bread Box, Metal Tray for Bacon by Rodney Kent, Nasco Holiday Dish Set, Pink Cake Plate, Library Card Files w/Recipes, Pyrex Refrigerator Dishes, Pyrex Casserole Dishes, Glass Pitchers, Totally Today White Bowls, Pyrex 5x8 dish, Fire King Jadeite Dishes, Enamelware, Sifters, Old Strainers, Several Pieces of Hull Pink & Yellow Pieces, Nippon Dishes, Pirkin Hammer Covered Dish, Homer Laughlin Bowls & 12 Place Setting, Donann Havaland (Germany) China w/Accessories, Roseville USA 665-3, Nasco Holiday Dishes, Kut Ani China Hand Painted Dishes, Pfaltzgraff Dishes, Rose Bower 22k Gold Plate, Tea Kettles, Knives, Pyrex Divided Bowl, Small Clear Pyrex Bowls, Pyrex Cake Plate, Clear Glass Desert Bowl on Pedestal. **TOYS** Vintage Games, Metal Childs Wheelbarrow, 2 Snow Sleds, Old Tonka Toys, Pachinko Game, Tinker Toys, American Logs, Metal Ride on Mercedes Car, Metal Structo Ladder Truck, Golden Books, Golden Books w/Records, Fisher Price Toys, Old Metal Toys, Lead Toy Figurines, Amphibo Tupperware Toys, Wooden Blocks in Wagon, Beverly Cleary, Winnie The Pooh & Paddington book Sets, Old Monopoly Game. **TOOLS-MISC** Wood Tool Chest, Misc Hand Tools, Plumb Double Bit Ax, Small Anvil, Trumpet, Stella Guitar, Kerosene Lamps, Lots of Crocheted Hats, Many Crocheted Rugs in Various Sizes and Colors, Hand Embroidered Linens, Vintage Linens, Homemade Quilts, Tins, Lots of Yarn, Crochet Thread, Many Balls of Fabric Cut for Making Rugs, Craft Supplies, Thread, Fabric, Several Sewing Machines, Old Quicke Fire Extinguisher, 33 1/3 and 45 RPM Records, Pellet Gun, Bamboo Fly Rods, Electric Heaters, Cat Scratching Tower, Old Books, Vases, Metal Scoops.



THIS IS JUST A PARTIAL LIST,
 MANY BOXES AND TOTES HAVE
 NOT BEEN OPENED

Reid Auction Service

Randy Reid 417-257-3911 • Rex Reid 417-372-1866 Ark. Lise. #2606 • Ted Reid 417-256-6661
 Concessions & Restroom available. Not responsible for Accidents, Lost, Stolen or Mislplaced items. Any announcements made day of sale supersedes any prior written or oral communications. Cash and checks accepted no Credit Cards

COIN & CURRENCY AUCTION

Saturday, February 12th, 2022 ~ 10:00 AM

LOCATION: 500 West Carmen Road, El Dorado Springs, MO Optimist Building (Watch For Signs)

Auction For Terry Mooney Coin Estate

Gold, Silver, Type, Collector Coins & Rare Currency

Gold To Include 1882 Gold \$20 Cent Piece, 1873S Gold \$20 Cent Piece, 1996 Gold \$5 Piece, 1994 Gold \$5 Piece, 1853 California 1/4 Dollar Gold, Brazilian Gold & Other, Rare Currency Inc 1928 Gold Certificate \$20, 1907 Wood Chopper \$5 Bill, 1922 Gold \$10 Certificate, 1844 Black Eagle, 1928 National Currency \$10, 1929 Brown Seal KC, MO \$5, 1920A Blue Seal Funny Back, 1928A Blue Seal Funny Back, 1928 Red Seal Funny Back, 1934A \$20 Bill, 1928 National Currency, 1935S Hawaii \$1 Note, Rare 1963A Texas \$20 Bill, 1929 Federal Reserve \$20 Note, 1934A Federal Reserve Note, 1934 Hawaii \$5 Bill, 1929 National Currency \$5 Bill, 1934 Federal Reserve \$50 Bill, 1985 Federal Reserve \$50 Bill, 1935A S.C. Yellow Seal North Africa, 1935A H. \$1 Note, 1934 Federal Reserve \$20 KC Note, 1934A Chicago Note, 1934A San Francisco Note, 1950 KC Note, 1934A New York Note, Fractional Currency Inc 1849 Read Seal Ten Cent, 1875 Red Seal Ten Cent, 1863 Frac Twenty Five Cent 1875 Frac Fifty Cent, Lots Of Other Star Notes & Other Unusual Notes & Currency, Over 40+ Trade, Seated Liberty, Morgan, Peace Dollars Inc 1872 & 1875 Trade Dollars, 1850O & 1857 Seated Liberty Dollars, 1878CC, 1879CC, 1890CC, 1889, 1884S, 1887O, 1878S, 1894O, 1896S, 1899S, 1879O, 1883O, 1881, 1881S, 1888O, 1887S, 1902S, 1902O, & Other Morgan Dollars, 1928, 1926, 1926S, 1927, 1925S, 1934D, & Other Peace Dollars, Over 60+ Bust, Barber, Seated Liberty, Walking Liberty Halves Inc 1835 Bust, 1858, 1877, 1876 Seated Liberty, 1903S, 1907O, 1908O, 1908S, 1909S, 1912D Barber Halves, 1916, 1916D, 1916S, 1917, 1917D Obv, 1917S Obv, 1917S Rev, 1918 Walking Liberty Halves, Over 125+ Bust, Seated Liberty, Barber, Standing Liberty & Washington Quarters Inc 1818 Bust, 1877CC, 1856, 1858, 1875, 1877S, 1876S Seated Liberty Quarters, 1896O, 1899, 1915, 1912, 1914D, 1915D, 1905O, 1905S, 1906O, 1907O, 1908, 1908D, 1909D Barber Quarters, 1917 Type I, 1917S Type

I, 1918, 1929S, 1930S, 1929D Standing Liberty Quarters, 1932D, 1932S, 1935D, 1936D, 1939D, 1940 Washington Quarters, Over 200+ Bust, Seated Liberty, Barber, Mercury & Roosevelt Dimes Inc 1833, 1837, 1835 Bust Dimes, 1875CC, 1876CC, 1877CC, 1838, 1842O, 1847, 1834, 1875, 1876, 1855, 1872, 1880, 1882 Seated Liberty Dimes, 1902O, 1906D, 1907S, 1911, 1911S, 1912D, 1913, 1914, 1914S, 1915, 1916S, 1909O, 1907O, 1908O, 1906O, 1905O, 1903O, 1899S, 1848S, 1900, 1888S, 1900O Barber Dimes, 1921, 1921D, 1926S, 1918D, 1918S, 1926S, 1929S, 1945S Mercury Dimes, Several Roosevelt Dimes, 1831, 1834, 1835 Bust Half Dimes, 1854O, 1855 W/Arrows Seated Liberty Half Dimes, 1887 & 1889 Liberty V-Nickels, Some Shield & Buffalo Nickels, Jefferson Nickel Book, 1859, 1860, 1862, 1863, 1866, 1868, 1867, 1869, 1876, 1878, 1870, 1871, 1872, 1873, 1908S, 1909S Indian Head Pennies, 1909 VDB, 1909S, 1914, 1922D W/Weak D Lincoln Cents, Key Type Coins Inc 1857, 1858LL & 1858SL Flying Eagle Cents, 1808, 1809, 1810 Half Cents, 1875S Twenty Cent Piece, 1851, 1852, 1853 Silver Three Cent Pieces, 1868, 1867, 1873, 1881 Three Cent Nickels, 1864, 1865, 1866, 1867, 1868, 1869, 1870, 1871 Two Cent Pieces, Draped Bust Large Cents Inc 1800, 1803, 1806, 1807, 1814 Classic Head, Key 1817 W/13 Stars, 1816, 1817, 1818, 1819, 1822 Liberty Head, Commemorative Inc 1990 Prestige Set, 1991 Mt Rushmore, 1883 World Columbus Expo, 1925 Stone Mountain, 1934 Daniel Boone, 1946 Booker T Washington, Proof & Mint Sets Inc 1955, 1961, 1962, 1963, 1964, Some Silver Bullion & Lots Of Other Coins Not Listed. Check Website For Full Listing

Preview Will Start At 8:00 AM. No Sooner.

Undercover Police Officer Will Be In Attendance & Be Prepared To Have Your Picture Taken At Check In Or Anytime During The Auction.

Auctioneer's Note: It Is An Honor To Be Conducting This Auction For Mr. Mooney As We Have Been Friends For Many Years And He Is A Very Hard Core Coin & Currency Collector. Terry Has Been Collecting For Many, Many Years & Always Tries To Find The Very Key & Hard To Find Pieces. It Is An Honor To Be Selling Off His Very Hard Work Of Collecting. This Was A Hard Decision For Terry To Do But He Is Ready For Other People To Enjoy His Many Years Of The Hunt For Excellent & Key Coins & Currency. Preview Will Start At 8:00 AM. No Sooner. **Undercover Police Officer Will Be In Attendance & Be Prepared To Have Your Picture Taken At Check In Or Anytime During The Auction.** See Ya There!!!

Terms: Cash or check with proper ID. Now accepting most major credit cards. Nothing removed until settled for. Statements made the day of sale takes precedence over printed material. Everything sold as is where is. Not responsible for accidents. Restroom available. Concessions Provided. Check our website for upcoming auctions and for additional pictures!!



NANCE AUCTION SERVICE

No Matter How BIG or small, We Do Them All!!!

Col. Bill Nance 417-214-0093

PERSONAL PROPERTY AUCTION

SATURDAY, FEBRUARY 12, 2022 - 10:00 AM

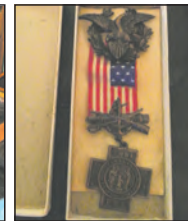
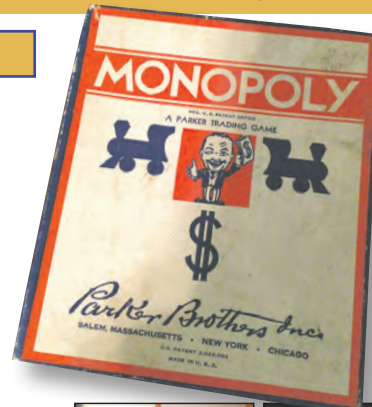
7069 East Farm Rd. 50 • Strafford, MO

INVENTORY LIST:

Beautiful secretary
Aladdin, Rayo and etc. oil lamps
Several primitive cabinets
Gun cabinet
Winchester model 74 22 Long rifle
Remington model 11. 12 gauge
Glass baskets
Old cast iron floor lamp
Primitive spoons
Old board games
Sears and roebuck cedar chest
Old military medals
Several pieces of McCoy
Pink Depression glass
Large spinning wheel
1 quart daisy churn
2x No. 20 Daisy churn
3 quart daisy churn
No.40 Daisy churn
No. 60 Daisy churn
No 80 Daisy churn
No. 30 Daisy churn
Mason jar churn
6 quart churn
Antique five drawer dresser
30+ Old milk bottles
Crock with lid
Antique hall tree
Wood chest
Hand quilted quilts
4x Hand forged Knives
Pocket knives
Royal dalton stoneware
No. 20 crock
Antique server
Read and Barton sterling silver silverware set
Sterling silver pastry server
Read and Barton silver tray
Strafford silver plate set
2x Rogers silver plate set
Beautiful table lamp

Beautiful cabinet
Wildlife artwork
Howard Miller grandfather clock
Mail train artwork
Toy tractors
Cast iron cow
Frisco caboose birdfeeder
No 8 bluebrand crock
Duck figurines and art
Small curio cabinet with animal figurines
No. 3 crock with primitive spoons
Tastemart ice cream clock
Old wooden pulleys
Footed cast iron pot
Old Cast iron Dutch oven
10 1/4 inch Cast iron pot with lid
Old cast iron pot
Number six cast iron skillet
Cast iron corn bread mold
Several old crock jugs
Washboards
Several small crocks
Very beautiful curio type cabinet
Old cream can
Three drawer China cabinet
John Deere lamp and clock
Antique ash cradle
Confederate states \$20 bill in rough condition
Pfaltzgraff
Antique loom
Antique four drawer
Wooden spoons and roller
Duck and bird prints
Kenmore upright freezer
Stihl MS 180 C chainsaw
Grinding stones
Old cast-iron Bell
International Harvester corn grinder

Large train chain
T post
Yard wagon
Snapper trimmer
Aluminum ramps
Craftsman toolbox with some tools
Air compressor
Walnut picker
Number nine cast-iron kettle With good bottom
Dearborn Two bottom plow three point
Three point blade
225 Lincoln welder
Old sausage press
Torpedo heater
Several Old tractor seats
No 10:Crock
Chicago drill press
Old violin
Mason jars
Rod iron headboard and footboard
Camelback chest
Old wooden chest
DeHorner
Gold grinder
Old wagon seat
Handtools and old style Bobwire
Aluminum extension ladder
Old water pump
Large anvil
Old metal forge
Craftsman vice
Three point King cutter tiller
Old cast iron pulleys
Three point homemade log splitter
Massey Ferguson 65 diesel Tractor
5 foot brush hog



FOR MORE INFORMATION GO TO WWW.EASTERLYAUCTIONCO.COM OR CALL EASTERLY'S AT 417-833-9494

EASTERLY AUCTION CO.

Mike Easterly Auctioneer • 417-833-9494

Not Responsible for accidents or theft. For more information call: Easterly Auction Company, Springfield, MO. Auction Terms: Visa, Mastercard, Cash, Cashier's check or checks with proper I.D. Announcements day of sale take precedence over printed material. Auction Notes: Although information is obtained from sources deemed reliable, auctioneer makes no warranty or guarantee expressed or implied. Buyers should themselves take the opportunity to make their own inspection prior to sale.

www.EasterlyAuction.com • auctionzip.com ID#14770



EXCELLENT FARM AUCTION

Generator ~ Tractors ~ Farm Equipment & Related ~ Shop Items ~ Outdoor & Misc ~ 4 Wheelers ~ Antiques

SATURDAY, FEBRUARY 12TH - 10:00 A.M.

Location: 17456 Royal Dr., Lebanon, MO
Directions: From Lebanon Take Hwy 32 East Approx 5.5 miles to B Hwy on Right. Go 4.9 Miles to Royal Dr on right, go 1.5 miles to Auction on left. **WATCH FOR CHADWELL AUCTION SIGNS.**
Payment System: Cash • Debit Card • Credit Card (Debit / Credit Card Fee Will Apply) Checks
 approved if known by auction company. VISIT: WWW.CHADWELLAUCTIONS.COM

Richard JONES

Winco 55,000 Watt 540 RPM PTO Generator



JD 5103 w/512 Joystick Loader 3spd Hi Lo Dual Hydraulics & Remote (1289hrs)



JD 7220 w/741 Loader 4x4 Shuttle Shift Left Hand Reverse 16 Speed Dual Remotes (6000 hrs)

FARM EQUIPMENT

JD MX15 Batwing Bushhog • JD 3pt 7' Bushhog (needs work) • Kelly Ryan Mixer Feed Wagon • 4 Basket Tonutti Tedder • 8 Wheel Hay Rake • Field Roller • Toughline 8' HD Ground Disc • Glencoe 16' Field Cultivator • Rhino 6' 3pt Cutter • 12' Minneapolis Smoothing Disc • 200 gallon Boomless Sprayer • Woods 10' HD Brush Cutter • First Choice 9' DM-7 Disc Mower • JD 435 Baler w/Silage Kit • 3&4 Section Spring Tooth Harrow • JD 6'x10' Feed Wagon w/Hyd Dump • NH Manure Spreader (needs floor) • Toughline 4' Garden Disc • 3pt Tractor Seeder • 3pt 4 Bottom Plow • 3pt 8' Angle Blade • International 4 Bottom Pull Plow • 3pt Farm Star Post Digger • JD Chopper • Other

FARM RELATED

10' HD Cattle Panels • Tarter Squeeze Chute • Wooden Mineral Feeder • B&W Farm 500# Creep Feeder • 20' Continuous Pipe Panels • Flare Box Wagon w/Seed Feeder • Cow Hip Lift • Fence Stretchers • 5 Gallon Feed Bunks • JD 4 Wheel Wagon w/Dump Bed 7'x12' • Elk River Self Catching Squeeze Chute • 16' Wire Cattle Panels • 20' Pequea Feed Wagon • 300 Gallon Fuel Tank • 10' HD Panels • Poly Calf Huts • Solar Fence Chargers • Hydraulic Cylinders • 3pt Carryall • Powder River Bow Gate & Sweep • Rear Bale Spike • Porta Hul Calf Hut • Steel Post Puller • Other



SHOP ITEMS

Hi Lift Handy Man Jack • Chain Boom • 4 Wheeler Loading Ramps • Oil Cans • Funnels • Hand Sander • Grinders • Sawzall • Hitachi Compound Miter Saw • Assorted Nuts & Bolts • Electric Heater • Plastic Shelving • 2 Wheel Dolly • Metal Shelving on Castors • Large Lot of Assorted Tools • Chain Saw Sharpener • Grease Guns • Cutter Hammer 250 Volt 30 Amp Box • Sockets • Manco Tool Box on Castors • Impact Guns • Gear Pullers • 100' Tape Measure • Torch Set w/ Cart • Extension Cords • Barrel hand Pump • 20 Ton Press • Briggs & Stratton 550 Watt Generator • Shop Fox Drill Press • Grizzly Band Saw • Industrial Router & Table • 30" Magnet Floor Sweeper (NIB) • Delta 10" Miter Saw • Steel Pipe Rack on Castors • Shop Vac • Tool Boxes • Portable Air Tank • Torque Wrench • Com A Long • Nut & Bolt Bin • Other

OUTDOOR ~ MISCELLANEOUS

JD LA140 48" Lawn Mower (300hrs) • JD LA175 54" Riding Mower (313hrs) • Assorted Shovels • Water Hose Reels • Live Traps • Assorted Lumber • Tomato Cages • 6x6 Chain Link Dog Pen • Yard Composter • Homelite Super XL Chain Saw • Stihl MS 250 Chainsaw • Large Lot of Fuel Cans • Pressure Cookers • Bug Shield • Water Tank Floats • Fimco ATV 25gallon Sprayer • Assorted Vet Supplies • Gas Powered Weed Cutter • 4 Wheeler racks • Fish Nets • 14" Trailer Tires & Wheels (new) • Large Lot of Electric Fence Supplies • Hand Garden Seeder • DR Weed Trimmer • Stihl Weedeater • PVC Fittings • 70 Steel Fence Posts • Yard Cart on Wheels • Misc Tin • 500' Plastic Pipe • Misc Rebar • Concrete Blocks • Electric Fence Wire & Lazy Susan • Misc Horse tack • Assorted Hand Tools • Post Driver • LB White Heater • Other

FOUR WHEELERS ~ TRAILERS

Yamaha 350 Bruin Automatic 4 Wheeler 4x4 w/wench • Grizzly Auto 4x4 4 Wheeler • 20' Homeade Stock Trailer • 5'x8' Steel Homeade Trailer • 20' Homeade Gooseneck Flatbed Trailer w/Stationary Tie Downs

ANTIQUES

Pulleys • Wash Board • Antique Stove Top • Speed Queen Ringor Washer • Milk Crate • Cross & Bow Saws • Green Fruit Jars • Other

AUCTIONEER'S NOTE: This will be a great farm sale offering years of accumulation. Come and spend the day with us! *Thanks, Shawn*

DRIVER'S LICENSE OR PICTURE I.D. REQUIRED • TERMS: CASH OR APPROVED CHECK OR

Chadwell
 Auction Service, LLC
 www.chadwellauctions.com

Auctioneer:
SHAWN CHADWELL
 417-830-0209
 Ringmen:
 Weston Chadwell ~ 417-349-0727

Clerk:
SHELLY CHADWELL
 Cell: 417-880-8449
 Cashiers:
 Shawn Irby • Marla Chadwell
 Kati Roberts • Emily Chadwell

PROFESSIONAL SALES MANAGEMENT

LUNCH WAGON • APPRAISAL SERVICE • RAIN OR SHINE
 All announcements made day of sale take precedence over any printed matter.
 Not responsible for lost or stolen merchandise. Not responsible for accidents.



ONLINE ONLY EQUIPMENT AUCTION

www.SextonAuctioneers.com
BID NOW!
Much more equipment online!

Internet Bidding closes at 11:00 am CST
THURSDAY, FEB. 24, 2022



2015 International Prostar



2014 Peterbilt 579



1995 Ford LA9000



2020 Kenworth W900L

2009 Caterpillar 963D



2007 Wilson Hopper / Grain Trailer DWH-551



1983 Nutall 225E fixed neck lowboy



1987 Frameless End Dump With Homemade title



2005 Peterbilt 357 Dump Truck



2007 Mack CV713 Dump Truck



2000 Kenworth T800 Dump Truck



2003 Kenworth W900 Dump Truck



2003 Kenworth W900 Dump Truck



2000 Western Star 4964SX Dump Truck



2012 John Deere 6115D



Kubota B2601 HSD tractor Backhoe loader



JLG SkyTrak 10054 Telehandler



2007 Genie TGH 1056 Telehandler



Wiggins Yardbull WD256 Forklift truck



2012 John Deere 35D



2020 Case TR310B



2018 Case TV380



2017 John Deere 331G



2019 Bobcat T595



2018 Bobcat T770



2010 Case 450 series 3



2019 Grand Design Reflection Camper Trailer



2012 Ford F-250



1998 Dodge Ram Pickup Truck



2010 Chevrolet Tahoe



2005 Ford F-550



150+ Skid Steer Attachments



CALL TYLER SEXTON TO SELL YOUR EQUIPMENT!

www.SextonAuctioneers.com

For any questions call our Office: 314-529-0124

Auction Contacts Tyler Sexton | Gary Sexton

5182 US Hwy. 63 • Pomona, MO • email: Sales@SextonAuctioneers.com

Next Auction
APRIL 28

BUFFALO LIVESTOCK MARKET LLC



276 Hwy 32 West
Buffalo, Missouri

SPECIAL STOCK COW & BULL SALE

Tuesday, February 15 @ 6:30pm
Early Consignments Include:
Expecting 450-500 Cows

Covert Cattle:

50 Balance Cows, average age 6yrs old, all home-raised Cows, Cows start Calving March 1 for 90 days, bred to Reg. Polled Herf Bulls. This is a dispersal for the Covert Cattle Co. Spring herd. You will be able to get your hands on some of Dallas Co. TOP GENETICS.

Blosser Farms:

39 Sim/Sim Angus Cows w/ 15-20 Calves by side, balance Springers, most Cows all home-raised, bred to Black Bulls. Total Dispersal as the Blosser family switch gears to organic farming/exotics.

RJB Family:

40 Black Cows and Red Angus Crossed Cows, Cows bred for Spring/Early Summer Calves to Black and Char Bulls, 4-6yrs old. This herd is only for sale due to the loss of a lease.

McCallister Farm:

15 Char Cows, 3-5yrs old, 2nd and 3rd Stage, Calve 90 days, bred to Char Bulls, fancy set of gentle thick Char Cows.

Walker Ridge Farm:

25 Angus Cows, 4-6yrs old, Spring Calvers, bred Angus/Sim Angus Bulls, nice gentle Cows. Family switching to fall program.
10 Red Angus Crossed Rwf Hfrs, 950-1,100#, bred 3rd Stage.

Simmons Farm:

35 Red, Rwf, Beefmaster Crossed Cows, bred 2nd and 3rd Stage, running ages 4-SS.

Many more expected.

Ad made early to catch press deadline.
For info or to consign,
call Lyle Caselman or Leon Caselman.

FEBRUARY WEAN VAC

Sat., Feb. 12th • Call to book cattle in

FEBRUARY COW SALE

Tues., Feb. 15th • Call to consign

MON-WED MARKET REPORT

Listen to KJEL 103.7FM • Lebanon or KYOO 99FM • Bolivar

VIEW OUR SALES AT CATTLEUSA.COM

CALL FOR TRUCKING OR ON-FARM VISIT

Lyle Caselman • Owner-Manager
417-345-7876 • mobile 417-533-2944
Leon Caselman • Owner
417-345-4514 • mobile • 417-588-6185

Larry Heisel Rentals
LARGE or SMALL...
We Rent!
Crawler Loaders • Excavators • Backhoes
Call Larry!
573-779-1500
www.larryheiselequipment.com
Rental Available in 636 or 573 area code

MINI FARM 18.8 M/L SURVEYED ACRES: 3-bedroom ranch, shop. St. Francis County. Best Offer. Details Call 417-255-6640.

KENMORE 27" BUILT-IN SINGLE OVEN: Self-cleaning, black, \$100 or best offer. 636-239-2695. Washington.

WANTED MAYTAG WRINGER WASH MACHINE: In any condition. 417-746-0253. Norwood.

30 GALLON AUXILIARY FIBERGLASS FUEL TANK: \$50. 417-766-1991. Rogersville.

1600 OLIVER: Gas with 800 GB loader, rebuilt motor. M Farmall with SM motor. 417-349-2908. Cabool.

BRAND NEW AREA RUGS: Good on ceramic and wood flooring. White fluffy with gray squares. \$125. Call between 8 am-8pm. 417-664-4278. Lebanon.

MID MISSOURI STOCKYARDS
REGULAR SALE EVERY THURSDAY 11AM
WATCH OUR WEEKLY SALE IN REAL TIME ON DVAUCTION.COM
For Farm Visits, Market Updates, or Trucking
Call Zach Cox 417-777-1320
Dan Romine 573-578-4939
Competitive Buyers!
Competitive Commission!
Competitive Market!
Barn: 417-532-9292
I-44 • Exit 123 "just outside of Lebanon"
17505 Route 66, Phillipsburg, MO 65722
For weekly market updates, visit us at www.midmostockyards.com

SMALL ANIMAL SALE
February 11 @ 6pm
• Sheep • Goats • Ducks
• Chickens • Ponies
• Calves • Rabbits
Accepting Stock & Misc. Farm. Equipment at noon.
RJ's BBQ will be serving.
Summersville
Small Animal Sale LLC
245 2nd St. • Summersville, MO
Call Mitch 417-241-5558

CABLE 80 FT LONG 3/4 IN: New \$80. 417-753-2747. Rogersville.

FORD PARTS: 1949-1951 Front Brake Drums. Exhaust manifold. Cross Over Pipe. \$50.00. 417-457-1023. Raymondville.

I BUY GRAIN BINS: All sizes and conditions. Price depends on size and condition. Please call 573-280-5638. Sunrise Beach.

WOODED ACREAGE: Paved road, Collins MO, 5 acres m/l. \$25,000. Collins.

1954 CHEVROLET PICKUP GAS TANK: And other misc. front end parts. 573-732-3557. Bourbon.

WANTED TO BUY: Older John Deere, diesel, in need of repair. Retired mechanic. Call 573-768-0068. Sedgewickville.

ROUND GLASS DINING TABLE: 54" wide, 4 chairs, \$50. 417-532-2344. Lebanon.

HELP WANTED PLUMBER

Seeking a plumber with experience in residential service plumbing. Must have experience with all sorts of plumbing repairs and the ability to troubleshoot and repair plumbing problems. We are looking for someone who is outgoing, self-motivated, reliable and has quality ethics. A valid drivers license with good driving record is a must. We offer long term employment to the right candidate with paid vacation, paid holidays and health insurance. Immediate employment.

PLEASE CALL 573-348-2093



AUSTRALIAN SHEPPARD PUPPIES: 573-202-3132.

OLD HANDMADE FULL-SIZE QUILTS: \$50 each. 417-532-6561. Phillipsburg.

VINTAGE TWIN THRILLER NANCY DREW BOOKS: 17 editions \$50 for all. 417-532-6561. Phillipsburg.

"PARTS" VEHICLES, SEMI'S, FARM/ CONSTRUCTION EQUIPMENT: "Motors/Tranny's" Body parts, paint matching yours. "Warranted/Delivery" 800-807-9612.

BIG HORN 16" SADDLE: Dark leather, excellent sharp, \$200 Firm. 573-205-9401. Belle.

PIG FEED 450LB: \$200 firm. 573-205-9401. Belle.

HISTORY OF ST. ALBANS, MO. : H.B. \$20. 417-532-2045. (leave message and phone number). Lebanon.

STOCK MOBILE HOMES AVAILABLE: We gottem, single and double, 3 and 4 bedroom! Call Tuffy 573-657-2176. amegamobilehomes.com

WANTED TO BUY ANTIQUE CARS: Convertible. Corvettes, unrestored, motors, parts considered. 870-324-1154. Ash Flat.

KESSLING & SMITH FAMILY HISTORY BOOK OF WEBSTER COUNTY, MO: Also, Rader and Mace families. \$6.50. 417-532-2045. (Please leave message and phone number). Lebanon.

WANTED TO BUY DODGE DIESEL TRUCK: Or Toyota Tacoma. Also, buying antique cars. 870-324-1154. Ash Flat.

TINY HOMES: We gottem 573-881-3283

HEALTHCARE MADE EASY

WE CAN HELP YOU NAVIGATE HEALTHCARE.GOV



Choices In Health & Life Insurance
Mike Eblen, Agent
417-532-3360
238 S. Jefferson Avenue Suite A, Lebanon

WE BUY HOMES & LAND FOR CASH!

Get a fast, no-obligation cash offer!

MID MO LAND CO LLC
CALL TODAY! 417-991-6445

CORELLE DISHES: different patterns, 48 piece set for \$40. 417-532-2344. Lebanon.

THE FIELD GUIDE TO WILD FLOWERS, 223 pages, based on Field Book of American Wild Flowers by F. Schuyler Mathews, \$6.50. 417-532-2045. (Leave message and phone number). Lebanon.

ORGANIC CHICKEN LITTER AND "HIGH TEST LIME": Delivered trailer loads \$125T. 573-604-0674.

FIDDLE, BOW & CASE: Copy of a Stradivarius, \$200. 573-764-4435. Gerald.

AUSTRALIAN SHEPHERD PUPPIES: 12 Weeks Old, UTDI shots, Will trade for farm animals or rehoming fee. 417-967-6493. Roby.

MEDINA FIDDLE, BOW & CASE: \$75. 573-764-4435. Gerald.

WEATHERED BARN WOOD SIDING: 10" wide. 573-729-7226. www.pineridgerustic.com Salem.

LOG SIDING: 2X8 Pine/Western Cedar www.pineridgerustic.com 573-729-7226. Salem.

THE HEART OF THE SPRING BOOK. A Bennett Spring Novel by Laura L. Valenti, 161 pages. \$6.50. 417-532-2045. (Leave message and phone number). Lebanon.

USED MOBILE HOMES: Call David at VILLA HOMES IN ROLLA 573-578-8072. Rolla.

BUYING MOBILE HOMES: Call David at VILLA HOMES IN ROLLA 573-578-8072. Rolla.

WANTED: Old Pinball Machines and Juke Boxes. 573-424-7200.

Starnes Auto LLC
22115 Rt. 66 • Lebanon, MO 65536
417.718.2707 Cell
417.588.3159 Office
www.starnesauto.com

- 2003 CHEVY SILVERADO**
GRAY,\$6,200
- 2004 BUICK RAINIER**
SILVER, VIN#0442,
126,XXX MILES\$3,850
- 2005 CHEVY TAHOE**
PEWTER, VIN#7304.....\$5,200
- 2005 CHEVY EQUINOX**
BLACK, 152,XXX MILES.....\$3,500
- 2006 HYUNDAI SONATA**
BLUE, VIN#1040,
169,XXX MILES\$3,200
- 2008 TOYT SCION XB**
WHITE, VIN#6842,
102,XXX MILES\$5,800
- 2010 CHEVY HHR LT**
MAROON, VIN#8297,
72,XXX MILES\$5,800
- 2010 CHRYSLER T&C VAN**
RED, VIN#4820, 174,XXX MILES ..\$4,800
- 2011 DODGE GRAND CARAVAN**
SILVER, VIN#9691,
158,XXX MILES\$6,200
- 2012 BUICK VERANO**
MAROON, VIN#8297,
118,XXX MILES\$6,500
- 2015 NISSAN FRONTIER**
BLUE, VIN#3273,
106,XXX MILESCOMING SOON

WE DO ALIGNMENTS!

CLASSIC AMERICAN MUSCLE



2021 BB3026HL
2021 BB4035CHIL

STAHLMAN
POWER SPORTS

1387 S. BISHOP AVE., ROLLA
573-364-6944 
WWW.STAHLMANPOWERSPORTS.COM

We also have Bad Boy Implements

THANK YOU

to all of our loyal customers

We look forward to seeing you in 2022!

Metal Roofs Designed To Look Great On Your Home!



LIMITED LIFETIME PAINT WARRANTY

Ask About Our Quick Service.
Over **20** Colors and Several Styles To Choose!



HEAVY 29 Ga. METAL # 1
Limited LIFETIME WARRANTY
29 Ga. & 26 Ga. Painted

CUT TO LENGTH PANELS
GALVALUME METAL UNPAINTED 25 YEAR WARRANTY
#1 Standard Panels, 29 Ga.
Good Quality Quick Service

NEXT BUSINESS DAY SERVICE
Call for details.

DELUXE BUILDING PACKAGES AVAILABLE
CALL TODAY TO GET YOUR QUOTE!
877-556-8855



24x40x10 • 24x32x10 • 30x40x10 • 30x40x12 • 40x60x12

All Buildings Quoted Have #2 Lumber And #1 Galvalume Or Limited Lifetime Painted Metal

All Buildings Are Heavy 29 Ga. Metal, Three 2"x6" T&G Splashboards, All Poles 5"x5" Or Larger, CCA Treated, Fully Trimmed With One 3'x6' Walk-Through Door & One Large Sliding Door.

Plus Tax, Labor & Delivery Available On All Building Packages. Prices may vary due to local code restrictions.

AVAILABLE STOCK MOBILE

HOMES: Immediately, double wide and single, 3 and 4 bedroom 573-499-9993 columbiadiscountshomes.com

TRUE MODULARS: 30 to 60 day delivery available, 3 and 4 bedroom 573-657-7040 chateauhomes.net



Ervin Gingerich
417-926-2052
B. Eli Yoder
417-746-4932

Wright Spray Foam Insulators, LLC
Commercial & Residential
Call for **FREE** Estimates!

BIRDS OF MISSOURI FIELD GUIDE:
By Stan Tekiela, 182 pages, \$5. 417-532-2045. (Leave message and phone number). Lebanon.

I BUY.....used mobile homes. Call or text 573-338-6250 or email GregS.CH@outlook.com

REGISTERED HEREFORD & ANGUS BULLS: Home raised. Some Show-Me Select Qualified. 573-701-7828. Belgrade.

STORY & PICTURES BOOK OF OLD LINN CREEK: Haha Tonka and Camden County, by T. Victor Jeffries, 72 pages. \$5.00 postpaid. (417)532-2045. (Leave message and phone number). Lebanon.

RUBBER & LEATHER BOOTS AND HIP WADERS. Men's 11, Women's 7, some insulated. \$15-\$40 obo. 636-239-2695. Washington.

CYCLOPS & PARMAK CHARGERS

- Deli Sandwiches
- Homemade Yogurt
- Homemade Bread
- Glass Bottle Milk
- Cheese & Spices
- Bulk Foods
- Hydraulic Hoses
- Electric Fence Supplies
- Stay-Tuff Fence
- Johnson & Ritchie Waterers
- Gates & Panels

VISIT YOUR ONE STOP SHOP FARMERS QUIK STOP
5 mi. East of Lebanon on Hwy 32 • 417-991-1938

WINCHESTER MODEL 94: 30-30, lever action. \$1,200. 417-533-9484. Niangua.

OUTDOOR FORCED AIR WOOD FURNACE: Fire proof, insulated, thermostatically controlled. Been made since 1986. Made by Harmons Heating & Cooling. 573-743-6943 or 573-247-5585. Salem.

POOL TABLES: Installations, moves, recovers, repairs, accessories, etc. 573-646-1700.

MINI FARM 18.8 M/L SURVEYED ACRES: 3-bedroom ranch, shop. St. Francis County. Best Offer. Details Call 417-255-6640.

OFFICIAL TRACTOR OF TOUGH™

INTRODUCING THE ALL-NEW 5100 SERIES



Marshfield Machinery Inc.
222 E. Madison • Marshfield, MO 65706
417-859-2117 • www.marshfieldmachinery.com

*2018 data including all Mahindra group brand sales. MahindraUSA.com © 2020 Mahindra USA Inc.

Mahindra
Rise.

NEW MAHINDRA TRACTORS

1626 4WD & LDR 26HP
IN STOCK

2660 4WD & LDR 60HP
IN STOCK

2660 CAB 4WD & LDR 60HP
IN STOCK

2670 CAB 4WD & LDR 70HP
N STOCK

USED TRACTORS

IHC 826 92 HP 9,000

USED ROUND BALERS

HESSTON 945 4X5 9,000

JOHN DEERE 375 5X4 3,500

HESSTON 560 5X6 2,000

NH 850 5X5 1,500

JD 336 SQ BALER 4,000

USED MISC.

MF 8 WHEEL RAKE 3,000

JD 17FT TEDDER 2,500

VERMEER 8 WHEEL RAKE 1,750

M&W 8 WHEEL RAKE 1,750

Marshfield Machinery Inc.
222 E. Madison
Marshfield, MO 65706
417-859-2117
www.marshfieldmachinery.com

FIREARMS: Professional Repair, Restorations and Appraisals. Baron's Gunsmithing. 573-363-5801, Camdenton.

CUSTOM SAW MILLING: 417-533-4607. 417-664-1195. Lebanon.

QUALITY USED SADDLES WANTED: Will pay cash! George's Tack, Saddles & Feed. 573-346-7866. Camdenton.

LOADER BUCKET: 5 ft. good condition. \$200. 417-766-1991. Rogersville.

NEW SCHWINN STINGRAY BICYCLE: Monkey Handlebars. Banana seat. Rear Racing Slick. \$145.00. 573-364-7465. Rolla.

WOODED ACREAGE: Paved road, Collins MO, 5 acres m/l. \$25,000. Collins.



Overman Buildings Supply
 is **NOW** open inside the new
American Made ★ General Store
 in Rogersville.

*Say "Goodbye to high material/building prices!!"
 We manufacture it all in house.*

Metal Roofing
Building In A Box
-Shop Kits-



Portable Sheds
10x12s from \$2,250
12x16s from \$2,995

Rent To Own
available

Overmanmetal.com ★ Buildinginabox.org

40 year warranty metal **SPECIAL:**
****Charcoal- \$2.85 per linear ft./3ft wide/29 Gauge****

Bring in a competitor's quote and if we can't beat it by 10% on the first try, we will buy you lunch at our deli inside the store!

★ **1606 Chicory Rd. Rogersville MO.** ★
417-753-8030

1100 Pace Rd. Pocahontas, AR - 202 S. Prigmor Joplin, MO

WE BUY AND SELL
new and used mobile homes



(417) 501-1061



Getting Chores Done
LAND PRIDE
does that.

RB15 SERIES REAR BLADES
17-40 HP 60", 74", 84" Widths

- Cat. 1 Hitch
- 7 Forward angles; 5 Reverse angles
- 12" Offset left or right
- 14" Moldboard height
- 1/4" Moldboard thickness
- Landscape Rake adaptable
- Optional storage stand

1-1/2 Miles South Of Licking, MO On Hwy 63
573-674-2203 • 1-800-653-7152
www.agri-enterprises.com

For Outstanding Products & Service
AGRI-ENTERPRISES

A KID GROWING UP ON ROUTE 66
BOOK: By Bill Wheeler, Waynesville/
Pulaski County area, many photos. \$6.50.
417-532-2045. (Leave message and phone
number). Lebanon.

TRUCKERS & LOGGERS: Keep your Diesel engines running smooth this winter by adding Diesel plus. Extends the life of injectors and fuel pumps. For more info. Call 417-241-3653.

AUSTRALIAN SHEPPARD PUPPIES: 573-202-3132.

FIREPLACE LOG GRATE: 28" in width. \$25 obo. 636-239-2695. Washington.

CABLE 80 FT LONG 3/4 IN: New \$80. 417-753-2747. Rogersville.

FAINTING GOAT BABIES ON BOARD: 1ST kids just arrived. All colors & patterns. 100% pure bred. Check website www.greenacresvillage.com or text 573-216-7796 for more info. Lake of the Ozarks.

CALUS LOGGING

20 YEARS EXPERIENCE

Buying Standing Timber
Walnut & Oak

Joe Calus, Owner
417-926-4606 • MTN. GROVE

CERTIFIED

Buildings • Hunter's Cabins • Lawn Furniture



JAMCO BUILDERS

JAMCO Portable Buildings
800-688-2064 • 307 Enterprise Dr. • Seymour, MO • www.jamcobuilders.com

Rent To Own Plan

EARN \$60,000/YEAR PART-TIME: In the livestock or farm equipment appraisal business. Agricultural background required. Home study course available. 800-488-7570 or www.amagappraisers.com

CERAMIC CANISTER SET: With cutting board that fits in kitchen counter top. Various species of ducks. Set \$40 obo. 636-239-2695. Washington.

THE FIELD GUIDE TO WILD FLOWERS, 223 pages, based on Field Book of American Wild Flowers by F. Schuyler Mathews, \$6.50. 417-532-2045. (Leave message and phone number). Lebanon.

DARDEN PROFESSIONAL TIMBER HARVESTING, BUYING STANDING TIMBER: Great prices, improve wildlife habitat and improve forest health. State Certified & Fully Insured! 573-247-4808 or 573-739-1122. Salem.

IT'S A GAS SWAP MEET: Gas & Oil Collectibles, Advertising, Coin-Op, NO auto parts! Saturday, February 12th, 8 am – noon. Cowan Civic Center, Lebanon. General Admission \$5. For more information, call Nancy 573-864-1336. itsagasswapmeet.com

LIONEL TRAIN SET: Steam engine, tender, caboose and other car, track and transformer. \$195. 573-364-7465. Rolla.

OLD HANDMADE FULL-SIZE QUILTS: \$50 each. 417-532-6561. Phillipsburg.

RED BARN FIREARMS, LLC

- GUNS • AMMO
- RELOADING SUPPLIES
- DEPT. OF CONSERVATION HUNTING & FISHING LICENSES



417-818-6317 • 1101 N. HWY 13
COLLINS, MO 64738

Pine Ridge Rustic
Log Home Building Supplies

Services Offered!

- Installation
- Pre-finishing available on interior & exterior
- Dealer for exterior stains



- Log Siding
- Beveled Siding
- Car Siding • Red Cedar
- Western Cedar • Pine

www.pineridgerustic.com
523 CR 2410 • Salem, MO 65560 • Ph: 573-729-7226



YOUR AD GOES HERE!

Add YELLOW Color For An Additional \$3 Per Reader Ad

All ads will include Phone Number (unless requested to be deleted by advertiser) and City Or Town, Phone Number with Area Code counts as one word. City or Town counts as one word.

RATE: 80¢ Per Word. All Classified Ads Require Payment Before Print.

(1) 80¢	(2) \$1.60	(3) \$2.40	(4) \$3.20
(5) \$4.00	(6) \$4.80	(7) \$5.60	(8) \$6.40
(9) \$7.20	(10) \$8.00	(11) \$8.80	(12) \$9.60
(13) \$10.40	(14) \$11.20	(15) \$12.00	(16) \$12.80
(17) \$13.60	(18) \$14.40	(19) \$15.20	(20) \$16.00
(21) \$16.80	(22) \$17.60	(23) \$18.40	(24) \$19.20
(25) \$20.00	(26) \$20.80	(27) \$21.60	(28) \$22.40
(29) \$23.20	(30) \$24.00	(31) \$24.80	(32) \$25.60
(33) \$26.40	(34) \$27.20	(35) \$28.00	(36) \$28.80
(37) \$29.60	(38) \$30.40	(39) \$31.20	(40) \$32.00

Place your Classified Ad TODAY!

417-532-9131 • 800-665-8875

Fax: 417-532-8140

Or Mail To: P.O. Box 192 • Lebanon, MO 65536

For your convenience we accept MasterCard, Visa, Discover or American Express



DEADLINE FOR CLASSIFIED ADS: FRIDAY 4:00PM!

Name _____

Address _____

City _____ Email _____

State _____ Zip Code _____ Phone _____

Ad Total \$ _____ X # Weeks _____ = Amount Enclosed \$ _____



Get a great deal on getting more done.

Compact Tractors Cab available with select models 24.8-47.3 HP



Save big on L01 Series and LX Series compact tractors. The versatility to handle every job and a wide range of performance-matched attachments. Kubota tractors under 100 HP are rated #1 for reliability*. Stop in for a demo today.

\$0 DOWN 0% APR UP TO 60 MONTHS
PLUS
SAVE UP TO \$1,100

VISIT US TODAY FOR THIS LIMITED-TIME OFFER

Quarles Supply

3251 S Springfield Ave
 Bolivar, MO 65613
 417-777-2391

KubotaUSA.com

*2020 Progressive Farmer Reader Insights Award for Fewest Reported Problems Overall in the category of Small Tractor (Under 100 Horse Power). Award based on 2020 Progressive Farmer Readers Insights Tractors Study. © Kubota Tractor Corporation, 2022. \$0 Down, 0% APR financing for up to 60 months available on purchases of new Kubota L2501 equipment from participating dealers' in-stock inventory is available to qualified purchasers through Kubota Credit Corporation, U.S.A.; subject to credit approval. Example: 60 monthly payments of \$16.67 per \$1,000 financed. Customer instant rebates of \$700 are available on qualifying finance or \$500 on cash purchases of L2501 equipment. Additional instant rebate of \$400 is available with purchase of one new qualifying implement. Some exceptions apply. Offers expire 2/28/22. Terms subject to change. This material is for descriptive purposes only. Kubota disclaims all representations and warranties, express or implied, or any liability from the use of this material. For complete warranty, disclaimer, safety, incentive offer and product information, consult your Dealer or KubotaUSA.com.