

FREE - TAKE ONE!

Vol. 28 No. 20

AUGUST 12, 2021

800-543-8271 • 800-665-8875

WEEKLY TRADER MAGAZINE



Find us on
Facebook

@myweeklytrader
AUCTIONS PG. 8

VISIT OUR NEW WEBSITE! MYWEEKLYTRADER.COM

Don't wait until end of the year.
Secure your Section 179 tax deduction savings now!



Farmers, business owners, self employed operators,
start shopping for your new truck or SUV now.

ED MORSE
CHEVROLET
BUICK GMC

ROLLA

Shop Online or stop in at Ed Morse Chevrolet Buick GMC
in Rolla and place your order today!

100 Fairgrounds Road • Rolla, Missouri
573-364-1002 • EdMorseChevroletRolla.com

Land

For Sale

Webster Co., MO • 198 +/- Acres



\$1,200,000

- Top shelf farm with Niangua River for live water in Marshfield School District
- Water consists of 3/4 mile of river frontage, wells, ponds and springs
- 80 acres could be put back in crop production with class 2 soils
- Pasture is brome and clover
- Large 70 x 35 house with central heat and air, bath, porch, led lights and security system
- 3 Redneck blinds stay
- Large lean to barn that's 48 x 30, 50 AMP service with 220
- Top shelf whitetail and turkey hunting along with river fishing
- Great blacktop road frontage and I-44 frontage
- Excellent fencing with 5-strand wire and multiple pastures for grazing
- Private asphalt drive is on a dead end road



WHITETAIL PROPERTIES REAL ESTATE

HUNTING | RANCH | FARM | TIMBER

Brian Utecht | 417-766-5595

Brian.Utecht@whitetailproperties.com

WHITETAILPROPERTIES.COM

Missouri's Top Land Specialist in 2014,
2015, 2016, 2017, 2018 and 2019





Getting Chores Done
LAND PRIDE
does that

DH25 SERIES

DISC HARROWS
40-100 HP 72", 96" Widths



www.landpride.com

- Cat. 1 & 2 Hitch
- 20" or 22" Notched blades
- 3" Square frame
- 7-1/2" Blade spacing
- Angle front & rear gangs up to 21 degrees
- Adjustment handle to aid in angling
- 1/2" Thick bearing hangers

For Outstanding Products & Service

AGRI-ENTERPRISES

1-1/2 Miles South Of Licking, MO On Hwy 63
573-674-2203 • 1-800-653-7152 • www.agri-enterprises.com

ROUTE 66 DINING 7 LODGING GUIDE:
183 pages, \$5.00. 417-532-2045. (leave message) Lebanon.

STAY-TUFF FENCE, Johnson concrete waterers, waterlines, hydrants, posts, panels, hydraulic hoses, & GOOD FOOD. Farmers Quik Stop. 417-991-1938. Lebanon.

POOL TABLES: Installations, moves, recovers, repairs, accessories, etc. 573-646-1700.

METAL ROOFS: We repair leaky metal roofs with warranty. Also, flat roofs, very affordable, cover all state. 573-338-1148. Jefferson City.

WEATHERED BARN WOOD SIDING: 10" wide. 573-729-7226. www.pineridgerustic.com Salem.

BOOTS: Rubber and leather boots and hip waders. Men's 11, Women's 7, some insulated, \$15-\$40 obo. 636-239-2695. Washington.

VOTED #1 BEST Preowned Car Dealership

TIM'S USED CARS

(573) 341-3828 • 1334 South Bishop (Hwy. 63) • Rolla, MO
Next to Hwy CC • www.tims-used-cars.com

2015 GMC 2500 HD
Denali, Crew Cab, 4x4, Duramax Diesel, Loaded w/ Options, 135,xxx Miles
Only \$49,500

2018 FORD EDGE SEL
AWD, 2 Liter 4cyl., Loaded w/ Options, 66,xxx Miles
Only \$27,900

2017 JEEP RENEGADE LATITUDE
4x4, 4cyl., Auto, Power Equipped, 75,xxx Miles
Only \$17,500

2014 CHEVY 2500 HD
Reg. Cab, 4x4, 6.0 V8, Auto, AC, 142,xxx Miles
Only \$19,900

LARGE SELECTION OF CARS, TRUCKS, SUVs & VANS!

CLASSIC EDGE
TITANIUM HDX

26% Tax Credit on EPA certified Central Boiler Classic Edge HDX models and installation. Call today to learn more!

Outdoor Wood Furnace CentralBoiler.com

Yarbrough Equipment Sales & Services, Inc.
9776 E. State Hwy OO • Strafford, MO
417-736-2303 • 1-866-286-6901 • www.yarbeq.com

The Classic Edge 360, 560 and 760 HDX are U.S. EPA Certified

2 ANTIQUE CURIO CABINETS: \$100 each. Call between 8am-8pm. 417-991-8190. Lebanon.

FERTRELL ORGANIC FERTILIZER: Free Catalog. 315-796-4370. Caulfield.

FIREARMS: Professional Repairs and Restorations. Baron's Gunsmithing. 573-363-5801, Camdenton.

CALUS LOGGING

20 YEARS EXPERIENCE

Buying Standing Timber
Walnut & Oak

Joe Calus, Owner
417-926-4606 • MTN. GROVE

CERTIFIED

Buildings • Hunter's Cabins • Lawn Furniture

JAMCO BUILDERS

JAMCO Portable Buildings

800-688-2064 • 307 Enterprise Dr. • Seymour, MO • www.jamcobuilders.com

Rent To Own Plan

OZARK EMPIRE FAIR-SPRINGFIELD 60TH ANNIVERSARY COOKBOOK: 1937-1996, 144 pages. Prize winning recipes from the fair. \$9.50. 417-532-2045, (leave message) Lebanon.

LOG SIDING: 2X8 Pine/Western Cedar
www.pineridgerustic.com 573-729-7226.
Salem.

BUYING STANDING CEDAR: Minimum 6-in diameter. 417-531-0403.

USED MOBILE HOMES: Call David at VILLA HOMES IN ROLLA 573-578-8072.
Rolla.

BUYING MOBILE HOMES: Call David at VILLA HOMES IN ROLLA 573-578-8072.
Rolla.

WANTED TO BUY ANTIQUE CARS: Convertible, Corvettes, unrestored, motors, parts considered. 870-324-1154. Ash Flat.

WANTED TO BUY DODGE DIESEL TRUCK: Or Toyota Tacoma. Also, buying antique cars. 870-324-1154. Ash Flat.

CONWAY HIGH SCHOOL BEARS 2000-2001 YEARBOOK. \$12.50. 417-532-2045. (Leave message and phone number.) Lebanon.

TINY HOMES – You gotta see these!! In Ashland. amegamobilehomes.com 573-657-2176.

WANTED, TIMBER TO LOG ON SHARES: Honest, reliable, references. 417-533-4607, 417-664-1195. Lebanon.

THEY ARE HERE Tiny homes cute, cute, cute columbiadiscounthomes.com

TINY TINY TINY Homes Homes Homes – Call Marla 573-657-7040 chateauhomes.net

I BUY.....used mobile homes.: Call or text 573-338-6250 or email GregS.CDH@outlook.com

REGISTERED HEREFORD & ANGUS BULLS: Home raised, Some Show-Me Select Qualified. 573-701-7828. Belgrade.

CUSTOM SAW MILLING: 417-533-4607, 417-664-1195. Lebanon.

WANTED, TIMBER TO LOG ON SHARES: Honest, reliable, references. 417-533-4607, 417-664-1195.



Meadowview Dutch Market

Discount & Surplus Groceries • Prices Subject to Stock on Hand

Call to Order
417-993-3017

Sale Dates August 11th, 2021 to August 17th, 2021 while supplies last!

FRESH MISSOURI STATE LINE Peaches
\$17.99 1/2 BU.
RIPE, JUICY & GREAT TASTE!!

DELI SPECIAL

HARD SALAMI REG. \$5.65 **SALE \$5.15**

SMOKED HOT PEPPER CHEESE REG. \$6.39 **SALE \$5.89**

TRY our Fresh Homemade DELI Sandwiches: TURKEY, HAM, ROAST BEEF, ITALIAN, BLT'S, PULLED PORK AND BLT PULLED PORK (MADE YOUR WAY!)
COME IN OR CALL to order! ALSO Custom Deli trays! Veggie OR FRESH Meat-N-Cheese!



Fresh Homegrown Produce
GREAT VARIETY!

Angle Soft Toilet Paper
\$5.99 12 CT. JUMBO ROLL

Smokey Bacon Cheddar Cheese
\$2.49 LB. APPROX. 5 LB. BLOCK

Uncooked Pork Sausage Link
99¢ LB. OR **89¢** LB. FOR 10 LB. CASE

Shasta Twist
99¢ 2L.

American Cheese Slices
\$9.99 5 LB. BLOCK

Chicken Breast Strips
99¢ LB. APPROX. 5 LB. BAG

Cherry Pie Filling
\$1.99 21 OZ.

Canadian Bacon
\$1.49 LB.

Mayo
2 FOR \$1.00 15 OZ.

TAKING ORDERS FOR

BABY GOLD PEACHES \$29.50 BU.

BARTLETT PEARS \$27.50 BU.

ORDER NOW!

MEADOWVIEW DUTCH MARKET
417-993-3017 Hours: Mon-Thurs 8-5pm
Fri 8-6pm • Sat 8-5pm
23 Miles West on Hwy 64 • Right on T Hwy
9 miles • Left on E Hwy 1 mile on Left

NOW ACCEPTING CREDIT, DEBIT CARDS & EBT

DUTCH COUNTRY STORE, LLC
573-378-4395
Hours: Mon-Thurs 8-5pm
Fri 8-6pm • Sat 8-5pm
5 miles East of Versailles off Hwy C on Kelsay Road

SPECIALIZING IN HEAVY DUTY GATES



Cow Country Gate Sales

Call Randy: 573-569-4754
or Home: 573-539-2528
Located at: Zimmerman Welding
16889 Hwy 52, Barnett, MO

WELCOME TO BAD BOY COUNTRY!



STAHLMAN POWERSPORTS

1387 S. BISHOP AVE., ROLLA
573-364-6944
WWW.STAHLMANPOWERSPORTS.COM

DARDEN PROFESSIONAL TIMBER HARVESTING, BUYING STANDING TIMER: Great prices, improve wildlife habitat and improve forest health. State Certified & Fully Insured! 573-247-4808 or 573-739-1122. Salem.

THE BITTERSWEET OZARKS AT A GLANCE BOOK: By Ellen Grace Massey of Lebanon, hardback, 219 pages, \$12.50. 417-532-2045 (leave message and phone number). Lebanon.

BLACK ANGUS BULLS: from 12 to 18 months. 417-932-4026. Summersville.

OLD READERS DIGEST: \$1 each. 8am-8pm. 417-991-8190. Lebanon.

SMALL SQUARE BALES OF STRAW: 417-932-4026. Summersville.

WARSAW, MISSOURI OZARK ECHOES 1964 YEARBOOK, \$20. 417-532-2045. (leave message and phone number). Lebanon.

SENIOR CITIZENS WALKER: Bedside potty, potty seat with arms for commode. 8am-8pm. 417-991-8190. Lebanon.

6 BRAND NEW AREA RUGS: White with gray squares, fluffy. \$160. 8am-8pm. 417-991-8190. Lebanon.

CUTTING BOARD: Fits in kitchen counter top, various species of ducks. \$15.00. 636-239-2695. Washington.

10' LANDPRIDE RCF3010 BRUSH HOG: \$5,500. 417-270-1505. West Plains.

OLD WORLD BOOK ENCYCLOPEDIAS: Full set. \$40. Typewriter, \$30. Kenmore sewing machine \$30, VCR & movies \$45. 8am-8pm. 417-991-8190. Lebanon.

MOEN KITCHEN FAUCET: Single lever, sprayer, new cartridge. \$45 obo. 636-239-2695. Washington.

MISSOURI HISTORICAL BOOK: published by State Historical Society of Missouri. \$6.50. 417-532-2045 leave message. Lebanon.

SWISHER COMMERCIAL PRO 52" ROUGH CUT ATV TRAIL CUTTER: 14.5 HP Kawasaki motor. Rated for up to 3" material. Like new, \$3,450. 417-270-1505. West Plains.

Experience Life In The "Past" Lane!



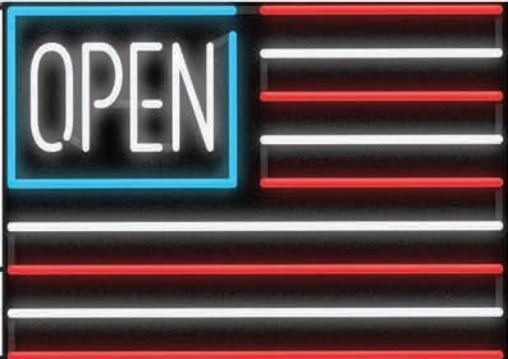
- Good Old Fashioned Home Cooking
- Homemade Bread, Buns & Pies
- Dry Goods • Gifts • Housewares
- Kitchenwares • Handmade Soaps



The Dutch Kitchen
Located in The Lead Mine Country Store
11-2:30 Daily • Closed Sundays
176 State Rd. YY • Tunas



The Leadmine Country Store
10am-5pm Daily • Closed Sundays
176 State Rd. YY • Tunas



Sale Ends August 31, 2021
 Seymour, Missouri 417-935-4201

Pole Barns & Post Framed Buildings!

Call for free quote, brochure & color chart.
 Other sizes also available.

23'x32'x10' \$7,279 Material Only \$8,609 Labor Included	23'x40'x10' \$8,215 Material Only \$9,885 Labor Included	30'x40'x10' \$10,100 Material Only \$12,300 Labor Included	40'x60'x12' \$17,860 Material Only \$22,480 Labor Included
---	---	---	---



Due to increased demand for our quality product we are currently hiring new barn construction crews. Contact Jeff

NOBODY, BUT NOBODY BEATS OUR PRICES!!!

10 ft. Slider • Engineered Trusses 8' O.C. • 2x6 Treated Bottom Wrap • Screws • 2x10 Top Wrap • 2x4 Purlins • Full 29 Gauge Steel • Plus 3 ft. Entry Door with Lock
 OPTIONS: Sidewall Heights on all Buildings 10', 12', 14' & 16'. Overhead Garage Door, Skylights, Insulation, Wainscoting, Insulated Vinyl Windows, Cupolas, Labor Rates Slightly Higher over 50 Miles from Seymour. Call for YOUR FREE QUOTE TODAY!!!

PAINTED WHITE, GREEN OR TAN METAL\$98.99	IN STOCK
10' - \$31.40 12' - \$37.66 16' - \$50.21	
MIX & MATCH METAL\$59.99	
8' - \$15.20 10' - \$19.00 12' - \$22.80	
GALVALUME METAL\$79.99	
10' - \$25.40 12' - \$30.43 16' - \$40.57	
GALVANIZED CORRUGATED METAL SOLD OUT!	
8' - \$9.84 10' - \$12.30 12' - \$14.75 16' - \$19.67	

40yr Painted Metal
Call

KNOTTY PINE DOORS
 Starting at
\$109.99

LP SMARTSIDE T-5 LAP B GRADE \$43.59SQ

Car Siding!
 1x6 White Pine Siding **79¢** in ft
 1x8 White Pine Siding **\$1.05** in ft
 * 4 Profiles to choose from!
 Broken Bundles Add 10¢ Per Ft.

4x8 Sheeting
 Less than full units Add \$1 per sheet

3/8" Beaded Paneling	\$17.99
7/16" T111 Siding	\$23.99
Paneling	\$9.99
1/2" Plywood	SSOLD
3/4" Plywood	SSOLD
3/16 Pegboard	\$12.99

LOTS OF MATERIAL AVAILABLE FOR THOSE IN HOME PROJECTS!

REAL WOOD SIDING
 2x6 Log Siding - 1.59¢ In ft
 1x8 Beveled Cedar from- 79¢ In ft
 T1-11 Siding from \$23.99

NEW PACKAGE HOMES

2x6—16" on center-Exterior Stud Walls
 Residential Roof Trusses-2' on center
 4/12 pitch with 1' over hang
 40 year Painted Metal roofing in 20 Different Colors
 Profile Ridge Vent - Ventilated Ridge Cap
 Vinyl Center Vent Soffit
 Color Matched Metal Fascia & Gable Trim
 2 - 3' 6 Panel Entry Doors
 4 - 3'x4' Vinyl Insulated Windows
ALL FIGURED FOR SUITABLE CUSTOMER SUPPLIED SLAB OR SUB-FLOOR

Shown with Available Options
 Your Choice of either:
 Stock 5/8" T111 Wood Siding w/1x4 Pine Window & Door Trim - or -
 7/16" OSB & House Wrap ready for other finish options

Price for Basic Materials Package & Labor
 20x24(480 sq. ft.) 20x32(640 sq. ft.) 20x40(800 sq. ft.) 28x40(1120 sq. ft.) 28x48(1344 sq. ft.)
SOLD OUT!!!

DECK PACKAGES
Materials Only

8x8.....	\$534.95	10x12.....	\$909.49
10x10.....	\$754.49	10x16.....	\$1129.99
12x12.....	\$1083.49	12x16.....	\$1425.29

QUAKER Now Stocking Quaker Vinyl Windows

2030	\$117.99	3030	\$137.99
3040	\$152.99	3052	\$169.99
3040Twin	\$334.99	3052Twin	\$369.99



LUCKY DISCOUNT LUMBER
 417-935-4201
 455 State Hwy C • Seymour MO 65746
 www.luckydiscountlumber.com



*Some restrictions apply see store for details. Prices subject to change without notice.

2007 ADIRONDACK RV: 27 foot, \$11,000. 417-887-8221. Springfield.

2 MALE BORDER DOODLES: 1 black & white, 1 blue merle, 5 months old. 573-739-9431.

LEATHER WORKING EQUIPMENT: 30" Con sew flat bed, 2 Union lock stitch machines, 1 Ideal clicker, 1 Randle strape cutter. \$3,000 for all. 636-583-4338. Union.

COOKBOOK COLLECTION: \$1.00 each. Many varieties. 417-532-2045. (Leave message and phone number). Lebanon.



Cheyenne Acres
Horse & Tack
BUY - SELL - TRADE
by Rolla, MO
Call For Directions & Availability
Call Kip
573-368-9402



2020 KANSAS CITY CHIEFS: McDonalds, red Friday, Superbowl Champs flags, unopened, NIP, \$15 each. 573-854-8132. Salem.

18,400 BTU WHIRLPOOL AIR CONDITIONER: \$200. 573-576-7130. Park Hills.

2020 KANSAS CITY CHIEFS SUPERBOWL COCA-COLA CAN'S: Unopened, mint. \$15 for 6-pack. 573-854-8132. Salem.



MARGARITAVILLE
Lake Resort
LAKE OF THE OZARKS

Join Our Housekeeping Team!

- \$750 SIGN-ON BONUS
- POTENTIAL OF \$400+ MONTHLY BONUS
- MEDICAL, DENTAL & VISION INSURANCE
- PAID TIME OFF AFTER 6 MONTHS OF EMPLOYMENT
- ASSOCIATE CAFETERIA
- AND MUCH MORE!

APPLY AT
MARGARITAVILLERESORTLAKEOFTHEOZARKS.COM/EMPLOYMENT

HIRING CAREGIVERS!

- Competitive Wages
- Full or Part Time

Call Now!

Reba's Family Care, LLC

417 664-0760 • Reba Green | 573-434-3764 • David Green



JOE THEISMAN CAREER STAT AUTOGRAPHED JERSEY: JSA COA. \$95. 573-854-8132. Salem.

PARTS 4400 COMBINE MOTOR: Straw Walkers Raidator, 4420 Combine good machine, will part out. 636-384-6114. Wright City.

LIONEL TRAIN SET: Steam engine, tender, caboose and other car, track and transformer. \$195. 573-364-7465. Rolla

FULL BLOODED GERMAN SHEPHERDS: 2 female, 4 males, not registered. 417-733-7062. Niangua.

BLUE HEELER PUPPIES: For sale, out of good working stock. 417-664-5926. Niangua.

PUPPIES ¾ MOUNTAIN SIEST ¼ RAT TERRIER: \$200 each 573-263-4749.

GE 5,050 BTU: 100 amp, air conditioner. \$50. 573-576-7130. Park Hills.

Best Antiques & Collectibles Under the Moon!



Hootie Hoot Hollow *Antique /Resale*

314-346-7098 • 314-610-0204 • 11520 Hwy. 64 • Lebanon
1/2 mi. from Bennett Spring State Park



REAL ESTATE - PERSONAL PROPERTY AUCTION



**Saturday @ 10:30AM
August 21, 2021
1840 State Hwy W
Marshfield, MO**

Ronald and Martha Andrews, Sellers; Public Administrator Danielle Boggs as conservator

**Directions: From Exit 100
in Marshfield, follow Hwy W
2 miles to sale site.**

**OPEN HOUSE
SUNDAY AUGUST 15 2-4 PM
Shown by appointment only prior to sale.**

REAL ESTATE SELLS AT 10:30 AM

2000+/- sqft all brick home on 7+/- Acres • 1250+/-sqft on main level w/full basement • 2 car attached garage plus two car carport • Home is 3BD w/ 2 1/2BA • Central Heat and Air • Refrigerator, Stove, and dishwasher all sell with the home • Septic tank • Private well • Propane tank sells separately • Small shop 10x20 with concrete floor • Small storage bldg

VEHICLES (Sells after Real Estate)

2003 GMC Sonoma SLS Pickup – 4wd – 4.3 ltr – 80% Rubber • 2012 Ford Focus – 4 Cyl. 90% rubber – 55,xxx miles.

GUNS SELL AT 10:45 AM (Guns are off Site prior to Auction)

Smith & Wesson 38 B&W Special • Ruger 22 Caliber long rifle with aimpoint electronic scope • High Point JCP 40 S&W + Holster • Ruger LCP 380 auto + holster • Smith & Wesson 357 magnum • Stevens 12 gauge 3 inch • Assortment of Ammo including .38, 380, 40, 22, 357 and 12 gauge.

SADDLES

Circle Y 1 1/2 inch roping saddle • 13 inch Barrel Saddle • 14 inch saddle

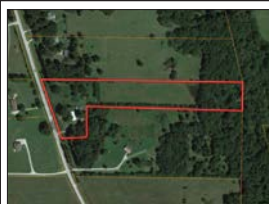
EQUIPMENT, TOOLS & TRACTOR

WD 45 AC Tractor with front end loader • 6ft blade-3pt • Howse 5ft Bushhog • Craftsman Mower 2TS 7500 20HP 44"cut O-Turn • Yard Machine 5 HP weed eater on wheels • Portable Air Compressor • Stihl HS 45 Chainsaw • Poulan P3314 chainsaw • Poulan 1800 chainsaw • Husqvarna leaf blower • Troy Bilt weed eater • Husqvarna 122 C weed eater • 2 power washers • Torch kit w/tanks • 5000 Watt generator • Lincoln 225 stick welder • Wagner 770 Airless paint sprayer • 4 ft Roller • Round bale Horse Hay ring • Mower jack • Aerator/seeder combo • Die hard Battery charger • 2 portable air tanks • Fence stretchers • Large 4 wheel yard cart • Small 4 wheel yard cart • Folding extension ladder • Hi Lift Jack • Electric Pole Saw • Lot long handle tools • Grease guns • Power tools • Hand tools • Ext cords

PERSONAL PROPERTY - HOUSEHOLD

Liberty Gun Safe • Sears Chest Freezer • Dining Table & 6 Chairs • Rainbow Vacuum System • Maytag Neptune front load washer • Samsung front load dryer • Panasonic microwave • China hutch • Drop leaf table • Corner ent. Center • End tables • Glider • Wood storage cabinet • Lamps • Dressers – chest of drawers • Antique desk • 3 door cabinet • Dishes • Pots & pans • Antique dishes • Pro Form Treadmill • Nordic Track • Large office desk • Bookshelves

Real Estate Terms: Sale of real estate is contingent on approval of report of sale by the probate Division of the Webster County Circuit Court 5% of Purchase price paid down on sale day. Balance of purchase due and payable in 30 days.



**Hoover Case - Auctioneer • MJ Johnson - sale manager
Have questions, Let us know • 417.859.3204 or 417.844.6020
info@caseauction.com • auctionzip.com ID#24071 • www.caseauction.com**

Terms: Announcements made sale day take precedence over all printed material. Neither Case Auction or property owner guarantees the absolute accuracy of supplied information.



ONLINE ONLY EQUIPMENT AUCTION

Internet Bidding closes at 11:00 am CST
THURSDAY, AUG. 26 2021

www.SextonAuctioneers.com
BID NOW!
Much more equipment online!



2017 Peterbilt 579



2015 Peterbilt 579



2013 Western Star 4700 SF



2007 Peterbilt 379



1994 Peterbilt 379



2000 Peterbilt 379



1993 Peterbilt 379



2003 Western Star 4900 Daycab



1992 Peterbilt 375 log loader



Over 150+
 Skid Steer
 Attachments!

2017 Case TR340 Skid steer

2014 John Deere 333E



2010 Case 450 Series 3 Skid Steer



2009 Case 450 Series 3 Skid Steer



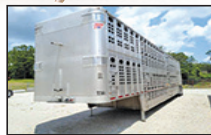
2010 Case 450 Series 3 Skid Steer



2000 Sterling L8500 Dump Truck



2001 International 4900 Plow Truck



2015 Wilson Livestock Trailer



Timberjack 240D



1998 Case 580 Super L



1998 John Deere 410E Backhoe



1990 John Deere 643D feller buncher



1996 John Deere 548G Skidder (x2)



1994 John Deere 548E



2005 Workhorse Intruder M 391 Class A RV



2016 Ford F150 King Ranch



2012 Chevrolet 2500



John Deere 555G Crawler Loader



International 1086 tractor



Kubota L2500 tractor and bushhog



2011 Ford F-550



1968 Chevelle



2019 PJ gooseneck trailer



CALL TYLER SEXTON TO SELL YOUR EQUIPMENT!

www.SextonAuctioneers.com

For any questions call our Office: 314-529-0124

Auction Contacts Tyler Sexton | Gary Sexton

5182 US Hwy. 63 • Pomona, MO • email: Sales@SextonAuctioneers.com

Next Auction
OCTOBER 28

Sam CRAWFORD AUCTION SERVICE LLC

As we have sold our home will sell the following 1½ miles East of Galmey, MO on Hwy. 254
Watch for Auction Signs

SATURDAY, AUGUST 21ST, 2021 - 10 AM

GUNS - TOOLS - ANTIQUES - HOUSEHOLD - MISC.



GUNS - Sell at 10

Remington 12 Ga. Semi-Auto (Brown-
ing Pat.)
Mossberg 12 Ga. Pump
Mossberg 500 12 Ga. Pump
Remington 700 223 Muzzle Break
Scope 12 Ga. Single Shot
T.C. 50 Cal. Black Powder
CVA 50 Cal. Black Powder
Black Powder Pistol
Hamilton & Son 39 22 Pump
Asst. Brass for Reloading
2 Climbing Deer Stands
Battery Game Feeders

Long Handle Tools
Lot Plumbing & Electrical
Lot Body Tools
A-Frame
300 Gal. Fuel Tank
Aluminum Windows
Asst. Metal Roofing
Other Misc.

Drafting Table
Vintage Kitchen Utensils
Guardian Wear Roaster & Pans
Egg Basket
Coffee Pots
Diner Jukebox Radio - Tabletop
Arrowheads
Wood Tool Box
Mickey Mouse
Some Fenton
Asst. Glassware

TOOLS & OTHER

Troy Bilt ZTR 42" Mower
Huskee 22 Ton Wood Splitter
Chipper/Shredder
Lawn Cart
Lawn Spreader
12V Sprayer
2 Chainhoists
Eagle 60 Gal. Air Compressor
Campbell Hausfeld 110 Welder
Craftsman Radial Arm Saw
Craftsman Table Saw
Ryobi 12" Planer
2 Chainsaws
Bench Grinder
Double Head 220 Shaper
Assorted Power Hand Tools
Central Electric Furnace

ANTIQUES & COLLECTIBLES

Trunk
2 Horlicks Malted Jars
Delco Batter Acid Jar
3 Stack Banister Bookcases
Walnut China Cabinet
Cast Iron Chicken Door Stop
Pictures
Bakelite Steak Knives
Asst. Toys, Trucks & Cars
Pinewood Derby Cars
2 Striking Clocks
2 Aladdin Oil Lamps
Cameras
2 China Sets
10-12 Tube Radios
Purses
Refrigerator Dish Sets
Pyrex
Sev. Pcs. Jewel Tea
2 Small Desks
Signs
2 Pc. Bedroom Set

HOUSEHOLD

Window A/C
Panasonic Flatscreen TV
Coffee & End Tables
Some Small Kitchen Appliances
Asst. Glassware
Yard Ornaments
2 Patio Sets
2 BBQ Grills
King Size & Full Size Bed
Rollaway Bed
Other Misc.

COINS

1903 1 Cent Piece
Indian Head Pennies
Kennedy Half Dollar 1964
Proof Set '78, '79, '98
Foreign Money & Coins
Some Sterling Pieces



TERMS: Cash or good check. Nothing removed until settled for. Not responsible for accidents. Lunch available. Statements made day of sale take precedence over printed matter. All items sell as is. No warranties given or implied.

417-998-6629
Cross Timbers, Mo.

CrawfordAuctionService.com



Sam
417-328-9137

Chase
417-399-1904

Chance, CAI
417-298-1751

Tom Poynter
Jack Lancaster

Bob & Donna Ford

ESTATE AUCTION

TRACTORS ~ TRUCKS ~ SHOP ITEMS ~ ANTIQUES & COLLECTIBLES
FARM RELATED ~ HOUSEHOLD ~ OUTDOOR ~ MISC

VISIT WEBSITE FOR PICTURES

EARLY START

SATURDAY, AUGUST 14TH - 9:00 A.M.

Location: 2906 Hwy MM, Mountain Grove, MO **Directions:** Take Dunn Exit from US

Hwy 60 to go North on Hwy MM approx 1/2 mile to Auction on Right.

WATCH FOR CHADWELL AUCTION SIGNS. **Payment System:** Cash • Debit Card • Credit Card (Debit/Credit Card Fee Will Apply) Checks approved if known by auction company.

VISIT: WWW.CHADWELLAUCTIONS.COM

Estate of Alvin & Evelyn
TYRRELL

TRACTORS ~ TRUCKS

(2) 8N Ford Tractor • H Farmall • JD M Tractor • 1984 Ford 1/2 Ton Auto 2wd (needs work) • 1979 Toyota Pickup 2wd w/ Camper (does not run) • Tractors sell as is, some need work



SHOP ITEMS

Funnels • Clevis • Compound Miter Saw • Large Clamps • Scroll Saw • Nuts & Bolts • Electrical Wire • Sockets • Assorted Tools • Com A Long • Car Ramps • Pipe Wrench • Other

FARM RELATED



6' Angle Blade • Dehorers • JD Sickle Mower • 3pt 5' Bushhog • Steel Fence Posts • Magnum Fence Charger • Fence Stretchers • 12' Gate • Other



HOUSEHOLD

Wooden Bar Stools • Large Lot of Wooden Cabinets • Toaster Oven • Assorted Dishes • Wooden Rocking Chairs • Other

ANTIQUES ~ COLLECTIBLES



Large Cast Iron Kettle • Large Broad Axe • Large Lot o Assorted Cast Iron • Cream Cans • Nail Keg • An-



tique Drill Press • Wooden Tool Boxes • Hand Saws • Ladles • Coleman Lanterns • Granite Ware • Grinding Stone • Galvanized Buckets • Wash Tubs • 2 Man Crosscut • Saws • Zenith Radios • Shoulder Drills • Kitchen Stool • Hay Hooks • Wooden Coke Box • Forge • Forge Tools

• Metal Lawn Chairs • Leg Vise • Wooden Ladder • Old Yard Gate • Push Plow • Well Pulley • Canvas Laundry Tote • Salesman Sample Coffee Grinder • Beer Steins • Texas Ware • Metal Advertising Signs • Oil Lamps • Whiskey Jugs • Beer Glasses • Wooden Planes • Comic Books • Westinghouse Fan • Old Skates • Army Helmets • Cast Iron Bells • Yankee Girl Cigarette Signs • Cotton Scales • Yogi Bear Lunch Box • Cowbells • Seagrams Mirror • Other

OUTDOOR ~ MISCELLANEOUS

Yard Machine Front tine Tiller • Hand Tools • Storage Lockers • Bee Hives • Hand Sprayer • Chicken Feeders • Bird Houses • Park Bench • Wire Baskets • Fuel Cans • De Laval Fresh Cow Pail • Boat Paddles • Large Lot of Small Animal Cages • Small Chain Link Cage • 500 gallon Propane Tank • Pet Taxi • Rubber Tire Yard Cart • Lawn Seeder • Electric Heaters • Coolers • Owls • Swords • Knives • Tackle Boxes • Tackle • Toy Metal Tractors (NIB) • Pflueger Trolling Motor • Large Lot of Steel Traps • Shepherds Hooks • Metal Detector • Other

AUCTIONEER'S NOTE: There will be a lot of items that are not listed! Come spend the day with us! **Thanks, Shawn**

DRIVER'S LICENSE OR PICTURE I.D. REQUIRED • TERMS: CASH OR APPROVED CHECK OR

Chadwell
Auction Service, LLC
www.chadwellauctions.com

Auctioneer:
SHAWN CHADWELL
417-830-0209

Ringman:
Weston Chadwell ~ 417-349-0727

Clerk:
SHELLY CHADWELL
Cell: 417-880-8449

Cashiers:
Shawn Irby • Marla Chadwell
Kati Roberts • Emily Chadwell

PROFESSIONAL SALES MANAGEMENT

LUNCH WAGON • APPRAISAL SERVICE • RAIN OR SHINE

All announcements made day of sale take precedence over any printed matter. Not responsible for lost or stolen merchandise. Not responsible for accidents.



HUGE RESTAURANT LIQUIDATION AUCTION

MONDAY, AUG. 16 - 9:00AM

CONTENTS FORMERLY OF OLD CHICAGO PIZZA
& HOG EYE SMOKE PIT BBQ

104 W THIRD ST • FAIR PLAY, MO 65649

SELLING →

10'X10' & 7'X8' WALKIN COOLERS, LARGER ONE APPEARS TO BE VERY LATE MODEL, BOTH SINGLE PHASE! ICE-O-MATIC 334 LB SLIMLINE CUBE ICE MACHINE-8 STAINLESS & GLASS DOOR REACHIN COOLERS & FREEZERS, SOME 5 YEARS OLD OR NEWER! WORKTOP COOLERS-SANDWICH PREP TABLE-REFRIG CHEF'S BASE-2017 GLOBE FLR MDL 60 QT MIXER, EXCELLENT, NEW COST OVER \$14,000-ANETS DOUGH ROLLER SHEETER-BERKEL 12" AUTO SLICER-LINCOLN IMPINGER 1132 ELEC CONVEYOR PIZZA OVEN-3 CONTINENTAL RAISED RAIL PIZZA PREP TABLES, ONLY 5 YRS OLD! US RANGE DBL STACK NAT GAS CONVECTION OVENS-NU/VU OVEN PROOFER COMBO, SGL PH!- RANGES-GRILLS-CHARBROILERS-FRYERS-CHEESE MELTER BROILER-PROOFERS & HEATED HOLDING CABINETS-SS FRY HOOD-CAMBRO CATERING CONTAINERS-POPCORN MACHINE, COTTON CANDY & CHOCOLATE FOUNTAINS-SS 3 COMP SINKS-OTHER SINKS-SUPER NICE HEAVY DUTY WORKTABLES-LARGE AMOUNT CHROME WIRE SHELVING, NEW & LIKE NEW! OTHER RESTAURANT EQUIPMENT-LOTS & LOTS OF SMALLWARES!

NOTE: OUR BUILDING IS FULL AND ONE OWNER STILL BRINGING IN EQUIPMENT SO BE SURE TO CHECK OUR WEBSITE & CLICK ON THE "AUCTIONS" TAB FOR UPDATES TO THIS FANTASTIC AUCTION! SURE TO BE SOME SURPRISES. THIS OLD CHICAGO PIZZA WAS ONLY OPEN 4 YEARS AND ALL EQUIPMENT WAS PURCHASED NEW! SUPER NICE REFRIGERATION ITEMS, MIXER, PIZZA OVEN, COOKING EQUIPMENT, HEAVY DUTY WORKTABLES & MORE! HOG EYE SMOKE PIT HAS MANY VERY NICE BANQUET & CATERING ITEMS! 2 AUCTION RINGS PART OF THE DAY SO BRING A FRIEND! MARK YOUR CALENDAR & MAKE PLANS TO ATTEND ON MONDAY, AUGUST 16TH!

MARON RESTAURANT EQUIPMENT, LLC & AUCTIONS CO.
417-327-5619 • WWW.MARONRESTAURANTEQPT.COM



GEHNER FAMILY AUCTION

SATURDAY, AUGUST 14, 2021 • 9:00 a.m.



3604 ROSEBUD ROAD • ROSEBUD, MO

Directions: FORM HWY 50 AT ROSEBUD, TAKE ROSEBUD ROAD APR. 2.5 MILES TO LANE ON RIGHT, TURN RIGHT ON FARM LANE & GO APR. 0.5 MILES

TRACTORS & HIGH LIFTS (SELL AT 11:30 A.M.)

2005 New Holland TN70 DA MFWD: Cab-Air Diesel, 16.9 x 30 Tires, Shuttle shift 3 pt, 3400 hrs., sells with NH 42" Loader(NICE TRACTOR); 1996 John Deere 6400 Tractor: Open w/ canopy, 3613 hrs., 2wd, 18.4 x 34 Tires, 3pt., sells with JD 640 Loader (NICE TRACTOR);1996 Ford 3930 Tractor: 2wd, Diesel, 613 hrs., 14.9x28 tires, 3pt., remote weights, sells w/ Westendorf TA 25 Loader (Very Nice Like New); 1956 John Deere 60 Fenders P.S. JD 3pt.; 1949 John Deere A; 1973 John Deere 450B High Lift (Poor Undercarriage)

EQUIPMENT

Wood 15ft. HYD Fold Brush Hog; Ford 2 Row 3pt. Corn Planter; 8ft. 3pt. Disc w/ Harrow; 2 Wheel Trailer;2 John Deere Quick Hitches; John Deere Quick Attach Bale Spike; John Deere Bucket with Grapple 72" for 640 Loader; Pallet Forks; 3pt. King Cutter Rock Rake; ARPS Heavy Duty 8 ft. Blade 3pt.; Sabre Samurai Sickle Cutter fits on Loader of Tractor (LIKE NEW); 2 Ford 5ft. Brush Hogs 3pt.; Dearborn 3pt. Cultivator 3pt.; Frontier 3pt. Post hole Digger 9" & 12" Augers; 3ft. Scoop; Ferguson Field Cultivator 3pt.; John Deere Combo Bale Spear w/Forks; High Reach Tree Shear HYD Precision MFG; Ford Plow 2-14 3pt.; Flare Box Wagon /Running Gear; Harrow Sections; Dearborn Subsoiler 3pt.; Letz Burr mill; Buck Saws; Ferguson Sickle Mower 3pt.; Hay Wagon w/Wood Sides; Horse Drawn 2 Row Corn Planter; 3pt. Seeder; 2 Oliver Manure Spreaders

GUNS (SELL AT 11:15 A.M.)

3 Marlin Mod 81 Bolt Action .22 Tube Fed; Stevens .22 Bolt Action; Marlin Mod 60 Semi .22 with Scope; Remington 700 Bolt Action 30-06 with Scope; 2 Heritage Rough Riders .22s.

TRUCKS, CAMPERS, TRAILERS & BOATS (SELL AT 11:30 A.M.)

1986 Ford F-700 Dump Truck with 10ft. Bed,5-2 Trans. 429; 1964 Ford Dump truck (needs work); Gooseneck Trailer with 16ft. Box; Gooseneck Camper with 5th Wheel (needs work); Pull Type Dog Trailer with 3 Comp.; 1987 19ft. Stratus Fish/Ski Boat, 150 HP Motor with Trolling Motor; V Bottom 12ft. Boat with Trailer; 14ft. John Boat.

ANTIQUE SAW MILL

Antique Saw Mill: Track Mounted, Saw Blade Straightner; Several Large Blades.

TOOLS & FARM SUPPLIES

John Deere 425 Riding Mower 1323 hrs; Gravely Lawn Tractor with Blade, Brush Hog, Deck & Plow; Stihl F555 Trimmer; Stihl F585 Trimmer; Honda 3500 Generator (LIKE NEW); Honda Excel 2750 Power Washer; Stihl Farm Boss Chain Saw; ATV Sprayer; Garden Corn Planter; Battery Chargers; Large Amt. of Metal tubing(Various Sizes); 4-100 lb. Propane Tanks; Log Chains; Binders; Hand & Garden Tools; Gas Cans & Funnels; Come-A-Longs; Wheelbarrows; Nuts & Bolts; New Red Brand Barb Wire; Apr. 200 Metal T-Posts; Concrete Mixer; Large Winch; Ford Tractor Pulley; Large Amt. of Lumber (Oak, Walnut, Rough Saw, All Sizes); Handy Man Jacks; Jack Stands; Ext. Ladders; Wood Ext. Ladder; Tires; Ext. Cords; Tin; Air Compressor; Shop Vac; Delta Tool Box; Tool Cabinets; 12" Craftsman Band Saw; 10" Belt Driven Saw; Hand & Power Tools; Craftsman Toolbox; Snap-On Hand Tools; T-Post Drivers; Henry Disston 2 Man Saw; 2 Post Vices; Log Splitter; 2 Generators; Propane Heater; Fishing Poles; Top Links.

ANTIQUES, COLLECTIBLES AND HOUSEHOLD

Kitchen Cabinet with Porcelain Top; Old Dresser Base; Walnut Chest; Kitchen Table & Chairs; Tricycle; Bicycles; Iron Pullies; Wood Whiskey Barrel; Galv. Minnow Bucket; Singer Sewing Machine; 1930s Walnut Bed & Dresser; Maple Drop Leaf Table; Collection of Wooden Ammo Boxes (Remington, Winchester & Peters); Galv. Wash Tubs; Cotton Scales; Metal Crates; Lanterns; Coleman Lantern; Corn Knife; Wood Barrels; Lots of Misc. Household Items.



OWNERS: THE GEHNER FAMILY

NOTE: WE ARE PLEASED TO WORK WITH THE GEHNER FAMILY AGAIN. THIS FARM HAS BEEN IN THE FAMILY SINCE THE 1850S (APR. 170 YEARS). THE BARN AND SHEDS ARE FULL. WE WILL RUN 2 AUCTIONS RINGS MOST OF THE DAY. THIS IS A LARGE AUCTION. LUNCH ON GROUNDS. HOPE TO SEE YOU THERE. RICK

RICHARD MOFFAT AUCTION SERVICE



573-761-4293
Jefferson City, MO

Auctioneers:
Richard Moffat & BJ Moffat
www.moffatauction.com

573-690-2823
Linn, MO

#1 AUCTION SOURCE IN CENTRAL MISSOURI

SERVING 33 COUNTIES!

A collage of various items including magazine covers and auction listings. The top left shows a 'WEEKLY TRADER MAGAZINE' cover for February 4, 2021, with the headline 'ATTENTION WOOD TURNERS!' and 'The Dale and Shari Robbins Collection'. Below this is a red circular graphic with the text 'IN PRINT & ONLINE!'. To the right, there are several auction listings, including 'MACHINERY & FARM EQUIPMENT CONSIGNMENT AUCTION' for Saturday, May 1, 2021, and 'ONLINE ONLY EQUIPMENT AUCTION' for Thursday, February 25, 2021. A 'SextonAuctioneers.com' logo is also visible.

TO ADVERTISE YOUR AUCTION, CALL 417-532-9131

WEEKLY TRADER MAGAZINE

100 E. Commercial, Lebanon
www.myweeklytrader.com
www.facebook.com/myweeklytrader

PUBLIC AUCTION

Sunday, August 15, 2021 • 11:00 a.m.

MOFFAT AUCTION CENTER • 467 Co Rd 604, Linn, MO

Directions: From Linn, take Hwy. 50 west 1 ½ mi. to Co. Rd. 604, turn left & go 1 mile to building on right, or from Jefferson City, take Hwy. 50 east approx. 18 mi. & turn right on Co. Rd. 604.

TRACTORS, EQUIPMENT & TOOLS

Ford Jubilee Tractor WF 3pt; 3pt Post Hole Digger; 3pt 5ft. Brush Hog; 3pt. 6ft. Blade; Ford 3 Bottom Plow 3pt.; 3pt. Scoop; 20 Ton Log Splitter; John Deere Riding Mower; Weed Eater; ATV Sprayer; Electric Cement Mixer; Stihl MS 180 Chainsaw; 4 x 8 Trailer; Pancake Compressor; Miter Saw; Craftsman Router; Bench Top Drill Press; Bench Grinder; Air nailer; Clamps; 10" Table Saw; Misc. hand & Garden Tools; Lots Misc. Items.

GOLF CART

Hawk Ridge Electric Golf Cart Electric

HOUSEHOLD & MISC.

Maytag Washer; Kenmore Dryer; Game Table; End Tables; Full Size Iron Bed; Cedar Chest; Canning Jars; Canning Supplies; School Desk; Wicker Settee; Cast Iron Tea Kettle; Small Chest Freezer; Area Rugs; Dressers; Drop Leaf Table; Lots of Misc. Household.

OWNERS: DAVE PRATT & LOUISE SANCHIER (MARY'S HOME)

ALSO SELLING

SIDE BY SIDE, TRACTOR & EQUIPMENT

Polaris Ranger XP 1000 Prostar w/ Cab, Heat, A/C, Approx. 150 hrs. & Approx. 2 yrs. old.; Kubota BX 2670 Tractor 4WD Diesel 3pt. w/ Easy Mount Mower Deck, Approx. 170 hrs.; 16 ft. Flat Bed Trailer bumper hitch; 6X8 Flat Bed Trailer w/ Ramp; Slide In Stock Racks for 16 ft. Trailer; Woods RM 660 Finish Mower 3pt.; NH 450 Sickle Mower 3pt.; 3pt. Post Hole Digger; 3pt. Bale Spike; Gates; T-Posts.

TOOLS & MISC.

Craftsman Air Compressor 220-175 psi; Dewalt Miter Saw on Stand; 2" Gas Trash Pump; Kobalt Table Saw on Stand; Craftsman 10" Bandsaw, Craftsman Mortiser, Craftsman Wood Lathe, Craftsman 135 psi Pancake Compressor, Craftsman Bench Grinder, Craftsman Floor Jack, Craftsman Router & Table; Swisher 22 Ton Log Splitter; Clark 130 Mig Welder; Drill Press; Spree Gas Scooter; Husqvarna 55 Chainsaw; Stihl MS 271 Chainsaw; Stihl 170 Chainsaw; Stihl Line Trimmer; 31CC Tiller; Power Boss 5500 Generator; ATV Sprayer; 2pc. Tool Box; Craftsman Hand Tools, Wrenches & Sockets; Ladders; 2 Burner Fish Fryer; Small Hand Power Tools; 1 Roll of Woven Wire; 2 Peavey SP 4TI Speakers; Bush Neon Light; Iron Wheels; 4 ft. 3 pt. Brush hog; 2 Wheel Pick-up Bed Trailer; Commercial/Competition BBQ/Smoker on Trailer.

GUNS & GUN SAFE

Springfield Mod. 110 30-06; Westernfield 20 ga. bolt; Winchester Mod. 1200 20 ga pump; British Military Rifle MKI; Westernfield M550A 20 ga. pump; Thompson 54 CA Black Powder; Lyman Great Plains 50 CA; Conn. Valley Arms 50 CA pistol; Hi-Standard 22 CA Rev.; Browning Bar 7 MM w/ scope; Squires 22 CA; Browning 388 CA bolt w/ scope; Winchester Mod. 94 30-30 Lever; Springfield Armory M1A; Hatfield 20 ga.; Ithica Double Barrel 12 ga.; Freedom Liberty Gun Safe.

NOTE: TRACTORS, SIDE BY SIDE & EQUIPMENT SELL AT 1 P.M. LOTS OF NICE ITEMS TO BE SOLD. SEE YOU AT THE SALE. RICK

RICHARD MOFFAT AUCTION SERVICE

708 E. McCarty St., Jefferson City MO 65101 – Business Office



Auctioneer:
Richard Moffat
573-690-2823
Jefferson City, MO

The Moffat Center
573-897-4004
Linn, MO
www.moffatauction.com

Auctioneer:
Matt Michelson
573-680-6188
Jefferson City, MO

PUBLIC AUCTION

SATURDAY, AUGUST 14 @ 9:00 A.M.

Directions: 349 Private Lane 615, Salem • SOLD OUR FARM

From Salem, take Hwy. 19 S., 3 miles, to Private Lane 615. Watch for signs.

ANTIQUES - HOUSEHOLD - TOOLS - FARM - LAWN - MISC.

Camping Cooler - Camping Stove
Gasket Kit for Big Cam Cummings
Softball Bag, Batting Helmet, Gloves & Bat
Dirt Bike Helmet - 6 Flower Vases - DeWalt Charger
2 Bostitch Drills & Charger - Trail Cam
Ryobi Drill - Slurpee Drink Maker - New Laminator
Backpack - Coin Collection - Ratchet Straps
4 New Chain Link Dog Kennels
1 New Patio & Deck Dog Kennel
Chain & Binders - BBQ Grill
Whirlpool Stainless Steel Fridge
Roll-Around Kitchen Island - Porch Swing
Craftsman 12" 2-Speed Bandsaw
B&W Gooseneck Hitch & Reese Hitch 09-18 Ram
2006 E250 Ford Econoline Van
©1967 Ford 2000 Tractor, 1695 Hrs
©2013 Ram 8' Bed
Teapot Collection - Stacking Deco Boxes
Decorative Ash Bucket - Crocks
Old Butter Crock, Omstad, Michigan
Decorative Pitchers - Tall Side Table w/Marble Top
Sofa Table, Off White
Microfiber Sofa, Off White, Like New
Microfiber Loveseat, Off White, Like New
Antique Loveseat, Cherry White - Vases
Large White Shelf Unit - Wooden Boxes
Candlesticks - Table Lamps - Martha Washington Lamp
Table Covers & Runners - Crocheted Doilies
Kitchen Linens - Bed Linens, Blankets, Sheets & Pillows
Curtains - Bath Towels - Washcloths
Throw Pillows - Wall Hangings - Pictures
Quilts - Luggage Set - Handmade Wooden Chest
Old Shadow Box - Longaberger Baskets
Woven Baskets - Large Lot of Santa & Snowmen
Nutcrackers - John Deere Village Set, Very Nice

Christmas Ornaments & Wreaths
Christmas Trees w/Wooden Trunk, 3 Sizes
Nativity Sets - Totes of Christmas Miscellaneous
Fall Decor - Banquet Table
Full-Size Bed, Footboard/Headboard Frame, Wrought
Iron, Antique White
Dresser, Antique White, Glass Handles
Nightstand - Antique White
Old Motor Manuals, 1940s
Harley Davidson Memorabilia, Signs & Motorcycles
Harley Davidson Barbie & Ken Dolls in Original Box
Paints/Stains - Medical Equipment, Humidifier
Large Trunks - Crafts Supplies, Ribbons & Paper
2-Drawer Metal File Cabinet
©Craig Distributing Tractor Trailer
Kraft, Alliant Tractor Trailers - Kraft, Craig, Alliant Misc.
Blanket Ladder - Antique 4 Drawer Chest - Shoe Lasts
End Tables, Antique White - Lanterns, Assorted Sizes
Oil Lamps - Lot of Kraft Wooden Cheese Boxes
Jars of Marbles - Milk Bottles, Glass Collection
Hen on Nest, Several Colors
Vintage Oil/Gas Cans - Antique Irons
Pioneer Woman Dinnerware Set, Red Gingham
Pioneer Woman Bowls - Depression Dishes
Pioneer Woman Cow Creamers
Small Appliances, Coffee Pots - Misc. Dishes
Stainless Steel Bowls - Vintage Pyrex Bowl Set
Vintage Pyrex Bowls, Assorted Sizes
Floral Loveseat - Towel Rack - Bar Stools
Upright Carpet Cleaner - Canning Jars
Canning Supplies, Pots, Large Pans - Food Mills
Baker's Rack - Tile Top Table - Folding Camping Chairs
3-Shelf Yellow Vintage Cart - Small Hanging Fountain
Shepherd's Hooks - Trellis - Planters
Older Coleman Stove - Coleman Lantern

Concrete Tools - Sheet Rock Tools
Harley Davidson Seat & Motorcycle Accessories
Plumbing Lot - Metal Pet Crate, Medium Size
Electrical Supplies, Plugs, Lights
Electric Ice Cream Freezer - Antique Crosscut Saws
Antique Hand Suckles - Doubletrees, Singletree
School Bell, Large - Kerosene Heater
Fishing Rods, Reels, Nets, Minnow Buckets
Shop Vac - Antique Brace & Bit - Hand Tools
Brown Purex Jugs - Hedge Trimmers
Power Paint Sprayer
Patter Pistol Gun & Hopper for Texture Walls
46" Craftsman Riding Mower
Troybilt Cultivator - Weedeater, Several
Riding Lawn Mower Yard Cart
Riding Lawn Mower Bagger, Fits 42" Craftsman
Antique Woodsaw on Stand, 30" Blade
Battery Powered Toy Motorcycle, Display Only
1997 Yamaha Big Bear 4-Wheeler, New Tires
1987 16' Stock Trailer - Post Hole Auger
5' Bushhog Brushhog, Parts Only
5' Bushhog Brand Bushhog
Homemade Utility Trailer, 4'x8'
Antique Iron Wheels - 3 Pc. Bistro Set
3 Pt. Tractor Blade, 6' - 30' Aluminum Ext. Ladder
Barn Door Track & Rollers
Misc. Selection Nuts & Bolts - Yard Tools
2 Reese Camper 5th Wheel Hitches
Corrugated Drain Pipe
2 Corrugated 15" Culverts, 7' Long
Climbing Tree Stand

**Many Other Antiques & Collectibles
Not Mentioned**

See you there! - Tom!



OWNERS: BILL & SHERRY COOK

ANNOUNCEMENTS AT AUCTION TAKE PRECEDENCE OVER PRINTED MATTER

WULFF AUCTION

Auctioneers:

Col. Tom Wulff - Col. David Wulff
498 Hwy. B, Salem, MO 65560
573-729-8476

Clerk: Tracy Strange Cashier: Nancy Inman

See Wulff Auctions at www.thesalemnewsonline.com/auctions

TERMS: CASH OR
APPROVED CHECK -
I.D. REQUIRED
NOTHING REMOVED
UNTIL SETTLED FOR

Licensed
Appraisals



RAIN OR SHINE
OWNER & AUCTION
PERSONNEL NOT
RESPONSIBLE FOR
ACCIDENTS AT
SALE SITE

ABSOLUTE COMMERCIAL REAL ESTATE AUCTION

AUGUST 27, 2021 - 10:00 AM

1461 East Seminole • Springfield, Mo 65804



REAL ESTATE:

This property has a building that is approx 3959 sq ft +/-, that was previously a daycare, Paved and gravel parking lot, and has another building with 650 sq ft +/- that needs repair.

OPEN VIEWING

August 22, 2021 from 2:00-4:00 PM

Legal: Melrose place lots 186 & 187 & 188

Terms: 10% Down day of auction with balance due at closing. Possession at closing with closing in 45 days or less from auction date. Buyers Premium 10%

INVENTORY LIST:

Medical cart
Laundry shelving unit
Piano
Piano bench
Heart shelf
Corner shelf
Computer wall desk
5 foot wide table
5 foot white plastic table
Window with screen
Wall divider
4 drawer wood dresser
Hutch
Blue bean bag
Framed picture of a barn
Framed picture of Monet
Projector screen
Two metal tables with wood top
Gray filing cabinet

Three window screens
Metal desk with five shelves
Dvd player
Small table
Reliablit 37 5/8 width by 69 inch height double pane window with screen
Pallet of miscellaneous restaurant paper products, mostly plates
Pallet of disposable cups
Pallet of insulated cups
4 plastic wagon wheels
Display cardboard cow
Green Bar typewriter
Box of misc. office supplies
Lettuce chiller
Hat box
Wooden tv tray
Case pf pump delivery set

LG television- estimated 35 inch
Bag of costumes
Contractor pack
Stack of Halloween stickers
Feeding pump (medical)
File holder for wall
Upright walker therapy
Reading magnifier
Box of computer accessories
Walker
Two printer/copiers
EMT bag
Microwave
Christmas décor
Meat slicer
Misc. home improvement items
Older computer towers
Walker
Floor finish
Oxygen bleach powder
Metal folding chair

Maroon padded chairs with arms (2)
Gray padded chairs (2)
Two white shutters
Wooden bookcase with two shelves
Glass candle holders (30)
Six pack apple cider scented votive candles (3)
Two brown circular tables with foldable legs
Brown circular table
Small gray table
L shaped brown desk with seven drawers
Rectangle metal desk with wooden top, four drawers
Brown wooden hutch/office storage
Peg board
Metal desk with no shelves, keyboard pullout
Two large cabinets

Walker
Lockers
Utility sink
Large cabinet
Small cabinet
Two boxes of moving straps
Two refrigerators
Large cabinet
Wooden shelves
Steam mop
Box of laminate flooring
American flag
Three desks of varying sizes
Box of old paint
Yard tools
Paint brushes
Mops
Weed or insect sprayer
Light bulbs
Refrigerated display case
Three clipboards

FOR MORE INFORMATION GO TO WWW.EASTERLYAUCTIONCO.COM OR CALL EASTERLY'S AT 417-833-9494



Mike Easterly Auctioneer • 417-833-9494

Not Responsible for accidents or theft. For more information call: Easterly Auction Company, Springfield, MO. Auction Terms: Bank Letter Of Credit Required. Visa, Mastercard, Cash, Cashier's check or checks with proper I.D. Announcements day of sale take precedence over printed material. Auction Notes: Although information is obtained from sources deemed reliable, auctioneer makes no warranty or guarantee expressed or implied. Buyers should themselves take the opportunity to make their own inspection prior to sale.

www.EasterlyAuction.com • auctionzip.com ID#14770



R&R AUCTION SERVICE

BILL HIBLER ESTATE AUCTION

SATURDAY, AUGUST 14 • 10AM

20 Scattered Oaks Lane • Elkland MO

From Buffalo take Highway 32 to H highway, 5 miles south to Spring Grove then East on Westwind 3/4 mile to Niangua, 1.1 mile to Scattered Oaks Lane, follow auction signs.



Cabinet sewing machine, Singer quilting machine with industrial table, two recliners, dining table & 6 chairs, couch, swivel rocker and ottoman, bookshelves, blankets, queen size bed, full size bed, 42" Emerson flat screen, 55" Panasonic flat screen, entertainment center, toys, end tables, typeset tray, odds and ends dishes and glassware, pots and pans, cast iron skillets, wood deck, smoke stand, metal shelving, Poulan Pro push mower, parts washer, bench grinder, GMC circular saw, Sears Craftsman vibrating sander, gas cans, hand seeder, aluminum step ladder, tackle boxes, tackle, rods and reels, socket holders, boom, log chains, Homelite chainsaw, McCulloch chainsaw, toolboxes, several locks, bungees, Coleman lanterns, large pipe wrench, drills, saws, sockets, wrenches, pliers, Rotozip, nuts, bolts, nails, screws, washers, grease guns, vise grips, screwdrivers, clamps, small propane tank, crescent wrench, tape measures, levels, roll around stool, insulator, shelf hangers, spray paint, double bit axe, single bit axe, battery charger, hammers, staple gun, extension cords, Rally rear tine tiller, Poulan Pro mower - deck work, lots of scrap, headache rack for pickup, extension ladders, 3 portable buildings, schedule 40 3/4" PVC pipe, 3 sheets of 3/4" particle board, post drivers, drive shaft, file cabinet, car ramps, tow rope, floor jack, misc. lumber and timbers, metal pallets, AC units, lawn seeder and garden cart, Sentry safe - no combo, angle grinder, Milwaukee sawsall, vises, Remington 480 power driver, Stihl FS74 weed eater, come along in case, ratchet straps, heater, lots of sanders, Dremel set, lots of drill bits, Expert ratchet wrenches, Stanley and Craftsman wrenches, ammo cans, roll around toolbox, bow saw, Schumacher battery charger, zinc jar lids, Craftsman 18" chainsaw, wire baskets, several wooden rules, old wood ammo box, wooden boxes, metal trash can, saddle, pitch forks, card table, tent - used once, 5' bush hog, several 8 x 12 insulated aluminum panels, 2005 F250 and so much more!



View this auction and more at www.rrauctionservice.com

ABSOLUTE AUCTION SATURDAY, AUGUST 21

28 Mustang Drive Buffalo, MO

After 40 years in this location the owners are going full time RV.

EVERYTHING MUST SELL!



Watch next week's trader for full listing!

TERMS: Cash, check, or credit card with proper I.D. nothing removed until settled for A 3% fee will be added to credit card purchases. Not responsible for errors in listing. Any announcement made sale day will take precedence over any printed matter. **Note:** Service will take every precaution to prevent accidents, but will not be responsible should any occur.

AUCTION

GENERAL AUCTIONEERS
Auction & Appraisals
SERVICE

For more information contact Professional Auctioneer Russ Weeks at 417-576-7357 or check out www.rrauctionservice.com

Serving this area's auction needs since 1997 with honesty and professionalism.

www.rrauctionservice.com

(417) 576-7357 or (417) 345-4140



HUGE MOVING SALE

Auction

SATURDAY AUGUST 21, 2021 @ 10 AM

287 Lovers Lane, Wasola, MO OWNERS: MICHAEL AND GLYNDA MASHEK

Directions from Ava: Head south on 5 highway towards Gainesville, in 16 miles turn left on to Highway 95, then in 5.9 miles turn right onto county road 122, in 2.1 miles turn left and your destination is on the right.

• AUTO • EQUIPMENT • TOOLS • FIREARMS • LAWNMOWERS • HOUSEHOLD •

FIREARMS

Western field 12 ga Ithaca Gun Company youth long rifle Crosman Pellet/bb repeater .177cal with scope	O.F. Mossberg and Sons 12 ga 2/3 inch New England Firearms 10ga 3.5 chamber Mossberg and Sons .410 3 in chamber	Daisy BB gun Connecticut Valley Arm Ink black powder 45 cal Stevens model 954 22 long rifle Kubota tractor L4400
--	---	---

AUTO

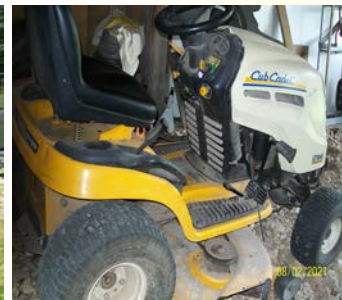
2003 F-250 4 wheel-drive- 7.3 diesel truck- wired for camper, tow package, gooseneck ball, adjustable break pedal, cruise control, clear title

FURNITURE/HOUSEHOLD ITEMS

4 recliners 1 sleeper sofa Corner hutch Dry sink and mirror 1950's to 1960's stereo console Standing jewelry box Several outside benches 2 refrigerators 1910 German made buffet Oak dining table/ 4	matching chairs/ leaf Kitchen table and 4 chairs Drop leaf pecan dining table/ 4 matching chairs/ leaf 9 drawer mirror dresser/ 5 drawer chest set 2 dinette sets/ need refinished	Misc kitchen items Vintage metal wheels (50 plus/ different sizes) Vintage galvanized buckets/ tubs Vintage enamel wear Vintage pots, tins, tools, jugs, glass, collector plates and numerous other items.
---	--	--

FARMING EQUIPMENT

Brush hog 6' blade Box blade Post Hole digger Forks Hay double spike Hay single spike Sickle MowerFord 501 Spare 501 blade 2 sprayers 25 and 30 gal 3 garden tillers (Troy built rear, Briggs and Stratton 5hs, small one) 2 cub cadet riding mowers (zero turn and regular) 2 garden trailers (pull behind) 2001 Honda 4 wheeler clear title 2005 Honda 4 wheeler no title	2006 arctic cat 4 wheeler, clear title (needs work) 16 foot utility trailer-clear title 2 petal boats 16 foot 3 person Coleman canoe 3 flat bottom boats that need work 1 vee boat, needs work 2 hay rings 2 300gal Polly water tanks 50 gal water tank 8 foot Polly feeder Misc chicken feeder and water supply Egg incubators 4 Egg turners Horse tack Feeders Metal saddle stand	Saddle Fence panels Gates Barbed wire and tools Numerous T posts Numerous wood posts Honda generator 1000w Sears table saw 220w 2 band saws Craftsman air compressor Small air compressor 220w Misc hand tools Misc garden tools 2 chainsaws 2 weed eaters Misc wood Misc metal Misc fishing equipment
---	--	---



FOR MORE PHOTOS, VISIT OUR WEBSITE CHEYNEYAUCTIONS.COM OR FIND US ON FACEBOOK!

Auctioneer's Note: The Masheks have sold their home and are moving. Their auction will have a nice variety of farm related itmes, antiques, and household. Concessions available! Come spend the day with us!



Cheyney Auction Company, LLC

Real Estate • Livestock • Farm & Ranch • Equipment • Household • Antiques
Travis Cheyney, Auctioneer

417-543-8751 • cheyneyauctions.com

ANNOUNCEMENTS Made Day Of Sale By Auctioneer Take Precedence over any Printed Matter. Not Responsible For Accidents. All items sold as is, where is, with no guarantee. Terms of sale: cash, credit/debit card, or check with valid ID



ONLINE AUCTION

BID NOW! BIDDING CLOSES AUGUST 24



Item Preview Dates:

Saturdays, August 7 & 14 (8AM-Noon), Monday, August 23 (8AM-5PM)
 Tuesday, August 24 (8AM-until the auction closes)
 Other times available by appointment

Item Preview Location:

4177 HWY VV, Berger, MO 63014



All items sell regardless of price.
 All items start at only \$1.



Tractors & Construction Equipment

- 2019 Bobcat TL360.60 Ag telehandler
- 2013 Cat TH407C AG telehandler
- 2018 Kubota M6S-111 tractor
- 2013 Bobcat E42 excavator
- John Deere 450-B crawler loader
- 2004 Ditch Witch 3610 trencher backhoe
- 2005 Thwaites 6-ton site dumper
- 2002 Thwaites 4-ton site dumper
- 1998 Genie Z45/22 knuckle boom man lift
- 2004 Takeuchi TL130 skid steer loader
- 2016 John Deere 4044R tractor w/ loader
- Mitsubishi MT4501 tractor w/ loader
- International 444 gas tractor
- John Deere 3020 gas tractor
- Massey Ferguson 245 diesel tractor
- Farmall Model A tractor
- Massey Harris 44 tractor
- Ford 8N tractor w/ sickle mower

Trucks, Vehicles, and Trailers

- International 1420 combine w/ 13' grain head
- 2013 Dodge Ram 2500 4x4 diesel
- 1978 GMC 6500 grain truck
- 1978 International 1750 grain truck
- 1981 Chevrolet C60 dump truck
- 1986 Ford F-250 4x4 XLT
- 2006 Ford F-250 service truck
- 1994 Chevrolet Caprice Classic
- 1987 Ford F-150 4x4 XLT
- 1999 Ford F-150 4x4 extended cab
- 2009 Hyundai Tucson
- 2001 Dodge Ram 2500 4x4 Diesel
- 2000 13' pup dump trailer
- 1990 8'x24' GN flatbed trailer
- 1991 Travelong 26' stock trailer
- 1997 17' flatbed trailer
- 2002 Forest River T22 camper
- 20' GN encl. cargo trailer
- 1986 6.5'x16' GN utility trailer
- 2008 16' flatbed utility trailer
- 1985 8'x20' flatbed trailer
- 1981 16' dump trailer
- 2001 GMC Sonoma SLS 4x4
- 2003 Chevrolet 1500 4x4
- 1991 Dodge Stealth RT
- 1951 Dodge 1/2 ton pickup
- 1964 Ford 3/4 ton pickup

UTVs, ATVs, Boats, and Motorcycles

- 1997 Chrysler Town & Country
- 2001 Ford F-150 crew cab 4x2
- 1998 Chevrolet S10
- 1981 Ford F-350 w/ stake bed
- 2020 Can-Am 1000R Commander XT UTV
- 1977 Ozark Sport 16' ski boat
- 1990 Bass Tracker 16' bass boat
- 1993 Polaris 250 4x4 atv
- 2002 Honda Rebel motorcycle
- 1980 Suzuki GS750 motorcycle
- 1975 Kawasaki 100 motorcycle
- 1972 Honda 100 motorcycle
- 1971 Yamaha 90 motorcycle
- 1968 Honda 350 motorcycle
- 1994 Polaris 300 4x4 ATV
- Yamaha Kodiak 450 ATV
- 1996 Polaris 500 4x4 ATV
- Honda Rancher ES ATV
- 1984 Yamaha 225DX three wheeler

Farm Equipment

- John Deere 915 V ripper
- John Deere 457 round baler
- John Deere 980 27.5' field cultivator
- 2016 Travis HSC2000 seed tender cart
- John Deere 1518 15' brush hog
- John Deere 1018 10' brush hog
- John Deere 1008 10' brush hog
- Howse 10' pull type brush hog
- Mayrath 10'x71' grain auger
- Westfield 10'x71' grain auger
- 40' shipping container w/ side doors
- 12' storage container
- Unused portable restroom/shower unit
- Unused skid steer attachments
- Unused portable hoop shelters up to 40'x80'
- B & B SK2005R 200 gallon sprayer
- Ritchie Bestway 750 gallon sprayer
- David Bradley 75 manure spreader
- NH 853 Fastnet round baler
- New Idea 212 manure spreader
- Gehl silage wagon
- Vermeer 605B round baler
- John Deere 910 grain cart
- John Deere 400 grinder mixer
- Kewanee 1010 18' wing disc
- Cimarron 10-wheel v-rake
- AC 20' wing disc
- 20' OMI pasture harrow
- Vermeer 8 wheel v-hay rake
- Kuhn Knight 8124 manure spreader
- Killbros 350 gravity wagon
- John Deere 8-wheel V-hay rake
- IH horse drawn manure spreader

NH Super 717 silage chopper

- NH 1002 Stackliner bale wagon
- NH 472 & 478 7' haybines
- New Idea 14A manure spreader
- New Idea 323 1-row corn picker
- JD 756 4-basket hay tedder
- JD 38 silage chopper w/ 2-row head
- Unverferth 26' harrow
- NH 327S manure spreader
- Unused 20' decorative gates
- Edge WX430 skid steer log splitter
- Cimarron 200 gallon 3-pt sprayer
- 3-pt grader blades
- 3-pt brush hogs
- 3-pt finish mowers
- 2-row corn planters
- Hesston 3-pt 4-basket tedder
- 3-pt sickle mowers
- Danuser 3-pt post hole diggers
- 2-4 bottom plows
- 6'-15' rotary hoes
- 2, 4 & 6 row cultivators
- 3-pt discs
- 6' grain drills
- John Deere 7' wheel disc
- AC 6' pull type brush hog
- Calhoun Silage wagon
- Ford 19-209 one arm loader
- JD 45W front loader
- 2 squeeze chutes w/ headgate
- Tracks for Gehl skid steer
- Cat. 2 quick hitches

Lawn & Garden

- John Deere Z465 zero turn mower
- Land Pride Razor ZR52 zero turn mower
- John Deere 330 & 318 riding mowers
- Husqvarna YTH150 riding mower
- Toro LX425 riding mower
- Troy-Bilt sickle mower

Shop Equipment & Miscellaneous

- Antique Aeromotor windmill
- Unused workbench tool boxes
- Husqvarna, Stihl & Echo chainsaws
- Miller AEA200 LE welder/generator
- Miller Tig-Rig 56 rig welder
- Unused Caddy Annexe wood furnace
- Best CF464 concrete power trowel
- Unused 10' drive over cattle guards
- HD oxy/acetylene torch cart w/torch
- Porta-Cool 2000 evaporative cooler fans
- 8'x9'6" steel service body
- JD 359 6-cylinder diesel engine

More items listed at SchneiderAuctioneers.com

SCHNEIDER Auctioneers LLC
 573-834-2207 • 573-291-8075
www.SchneiderAuctioneers.com

Huge Estate & Antique Auction

Saturday, August 14 • 10:00AM

12011 North Farm Road 231 • Fairgrove, MO



Beautiful home on 10 acres, has an aerobic treatment system, central air conditioning and heating system, a Quonset hut that is approximately 20x60, also has a workshop that is 36x40. This property was used previously as an emu farm, so property does have emu paddocks. The real estate will sell at 12pm.

COLLECTIBLES:

Cast iron donkey boot puller, vintage board games, vintage tonka toys, records, 8 mm movie projector and spools, ball canning jars and lids, cast iron skillets, stuffed baby emu, vintage Christmas décor, cabbage patch dolls, Teddy Ruxpin, Seth Thomas clock, hornets' nest hornets not included, Aunt Jemima syrup bottles, western stoneware vintage crocks, various brands crocks, primitive tools, axes, handsaws, sickle, block and tackle, pulley, marbles, various oil lamps including a miniature oil lamp collection,

EQUIPMENT:

Ford 8N tractor, lawn mower, 6-foot trailer, garden tillers, phoenix 6010 egg incubator.

FARM EQUIPMENT AND TOOLS:

Spools of barbed wire, water tanks, PVC pipe, rolls of cable, chain linked panels, water buckets, fence post, various links, craftsman sockets and wrenches, hand tools, ladders, chainsaws, Lincoln arc welder.

HOME GOODS:

Quilts, blankets, afghans, cross stitch, books, and novels, carving sets, paintings, lots of Pyrex, fire king dishes, lamps, bedding, vintage fishing rods and reels, outdoor concrete statues, emu décor eggs and hides.

FURNITURE AND APPLIANCES:

Upright freezer, antique record player, couch, china hutch, 3 complete bedroom suites, end tables, coffee table, dining table and chairs, recliner, lift chair, flat screen tv, entertainment center, camel back trunk.

GLASSWARE:

Fenton glassware, depression glass, carnival glass, Fenton bubble glassware, Delif glassware.



All items sold as is – where is. Accepted Payment Forms: Cash, Good Check, Credit, or Debit (3% added for credit & debit transactions) **Check out our online listing at www.auctionzip.com — Auctioneer ID# 30607 or find us on Facebook!**



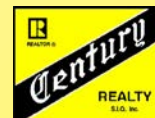
JON JOYCE Auctioneer, Licensed Agent | Lic. #200

Joyce

Auctioneering & Real Estate



(417) 859-2700 - Business | (417) 859-2724 - Fax
(417) 207-5412 - Cell | jjoyce24.jj@gmail.com



CALL DUCKS & BIRMINGHAM

ROLLERS: Call color, gray, pastel, blue fawn, blacks & blue bibs. 573-702-4022. Bismark.

POWER WASHING, CALL JET STREAM POWER WASHING FOR ALL OF YOUR GRIM TO SHINE NEEDS:

We wash it all, semis, stock trailers, campers, equipment, houses, buildings and driveways. If it has grime, call today to make it shine in no time! 417-270-1075. Potosi.

ROUND & SQUARE BALES OF HAY: 417-345-5634. Phillipsburg.

NEW RUGER LCPII .380: \$369.98. EC9s 9mm, \$279.37. SCCY CPX2 Red Dot, \$349.99. Heritage 22LR, \$129.81. rollingmead.com 417-241-1523. Marshfield.

1950'S COLT REVOLVER DEALERS MEMORBILIA.: All for \$100. Call pm. 573-764-3517.

ROLL 1958 B.U. LINCOLN WHEAT PENNY'S.: Last year for these. \$60. Call pm. 573-764-3517.

8FT 3 POINT DISK: \$550. 573-765-4406. Richland

BUFFALO LIVESTOCK MARKET LLC



**276 Hwy 32 West
Buffalo, Missouri
August 7th, 2021
Receipts: 949 Head
Feeders Steady to \$4 Higher.
Cows Steady.**

REPRESENTATIVE STEERS

300-400 @ 180.00 to 200.00
400-500 @ 157.00 to 180.00
500-600 @ 155.00 to 179.00
600-700 @ 145.00 to 161.00
700-800 @ 156.00 to 163.00

REPRESENTATIVE HEIFERS

300-400 @ 150.00 to 185.00
400-500 @ 142.00 to 164.00
500-600 @ 137.00 to 156.50
600-700 @ 145.00 to 159.00
700-800 @ 122.00 to 131.00
800-900 @ 115.00 to 126.00

FEEDER BULLS

400-500 @ 150.00 to 179.00
500-600 @ 140.00 to 161.00
600-700 @ 125.00 to 155.00
700-800 @ 135.00 to 143.00

BRED COWS

\$850.00 to \$1,070.50

SLAUGHTER COWS

High Dressing Fleshers 70.00 to 80.00
Med Dressing 65.00 to 75.00
Low Dress 50.00 to 60.00

SLAUGHTER BULLS

High Dressing 100.00 to 109.00
Med Dressing 80.00 to 99.00
Low Dressing Small Carcass
70.00 to 85.00

MON-WED MARKET REPORT

Listen to KJEL 103.7FM • Lebanon or KY00 99FM • Bolivar

VIEW OUR SALES AT CATTLEUSA.COM

CALL FOR TRUCKING OR ON-FARM VISIT

Lyle Caselman • Owner-Manager
417-345-7876 • mobile 417-533-2944
Leon Caselman • Owner
417-345-4514 • mobile • 417-588-6185

ONLINE AUCTION

**BIDDING ENDS
MONDAY, AUGUST 23, 2021
5:00 P.M. CST**

**ANTIQUES, COLLECTIBLES,
FURNITURE & DOLLS**

German Regulator Clocks;
German Grandfather Clock;
Ansonia China Clocks; Gold
Pocket Watch; Oak Hoosier
Cabinet; Oak Secretary Desk;
Oak China Cabinets; Glass
Door Bookcase; Modern
Furniture; Generator; Power
Washer; Pioneer, Civil War
& Indian Re-enactment
Costumes & Items From The
Gaffney Family; Oak Wall
Phone, Crocks; Barbie Dolls;
Glassware; Campaign Buttons,
Pins, Advertising Pieces; Gone
with the Wind Lamps; Hanging
Lamps; Jewelry; and Misc.
Household Items.

**This online auction offers
over 600 lots to be sold.**

**RICHARD MOFFAT
AUCTION SERVICE**

Auctioneer: Richard Moffat
573-690-2823
www.moffatauction.com

**ABSOLUTE REAL
ESTATE & ESTATE
AUCTION**

**Saturday, August 21st.
9:00 AM**

504 S. Coleman Rd Marionville, Mo. 65705

Directions: 1 block East of Jct. Hwy 60 & 265
Watch for Signs -- Breakfast & Lunch Available



Charming American Four Square with Classic Rock Face Block Exterior, 2300 sq. Ft. Historic Home on 8.5 Acres with nice Barn & Outbuildings, Home has 10ft. Ceilings, 8ft. Double Doors between L.R. & Parlor with all original Woodwork, 3 Bedrooms, 1 Bath, Living Room w/ Fireplace, Parlor, Formal Dining Room, Kitchen/Dining Room, partial unfinished Basement, huge Covered front Porch, Large Concrete Patio. All Asphalt Driveway & Parking, Large Yard with Beautiful Mature Shade Tree's, Central Heat, Window Air, City Water, Sewer & Gas, 30'x40' Barn/Shop, 18'x20' 1 Car Garage, older 20'x24' Barn with Lean-to, and older 20'x30' Machine Shed. Acreage is all Grass and being used for Hay The Home and all outbuildings are very well maintained, home is on Coleman Rd., property also has Hwy. 265 Frontage. City Only 30 minutes to Springfield, Marionville Schools.

Property Sells Absolute to the Highest Bidder

Terms: 10% Down, Balance due at closing 30 days or less.



Larry Foster
Auctioneer
Galena, Mo
Phone: (417) 723-8329
Cell: (417) 839-6860

www.fosterauctionservice.com
Email: bidnowsold@aol.com

LOCKED & LOADED

Ready for you!

- Hi-point pistols.....starting at \$165⁰⁰
- Heritage Rough Rider combo'sstarting at \$189⁰⁰
- Ruger Security 9's..... \$349⁰⁰
- Ruger SP101 357 magnum \$729⁰⁰
- Ruger 10/22 carbines..... starting at \$305⁰⁰
- Ruger Mini-14's..... starting at \$1,189⁰⁰
- Springfield Armory Hellcatsstarting at \$559⁰⁰
- Springfield Armory XDME pistols ..starting at \$549⁰⁰
- Taurus G3C pistols starting at \$300⁰⁰
- Smith & Wesson Governors \$819⁰⁰
- Smith & Wesson shield pistols.....starting at \$459⁰⁰
- Smith & Wesson 637 38 SPL \$489⁰⁰
- Smith & Wesson SD9's and SD40's..... \$379⁰⁰
- AR-15 rifles Bushmaster, Del-ton, Ruger, Smith & Wessonstarting at \$625⁰⁰
- AK-47 Rifles..... starting at \$725⁰⁰
- M240-SLR 7.62X51 20 inch Barrel with 2,500 M-13 links, cleaning kit and custom fitted Rifle Case starting at \$13,675⁰⁰
- Barrett 82A1 50 BMG with 3-10 round mags and 100 rounds of 50 BMG ammostarting at \$8,900⁰⁰
- Barrett 99 50 BMG with 100 rounds of 50 BMG ammostarting at \$4,525⁰⁰
- EAA Girsan 12 gauge camo with 3-1/2 chamberstarting at \$449⁰⁰
- Mossberg Maverick 88 12 gauge starting at \$275⁰⁰
- Mossberg 590 shockwave 12 gauge \$449⁰⁰
- 9MM ammo..... starting at \$375⁰⁰ per Case
- 40 S&W ammo.....starting at \$300⁰⁰ Per Case
- 5.56X45 green tip ammo SS109 \$675⁰⁰ per 1000 round case

Please call ahead to check on ammo and reloading supplies as inventories change daily. All firearms are factory new & prices do not include sales tax.

JERRY'S Guns & Ammo

1691 Blackoak Rd, Richland
573-765-3388
 jerrysguns@hughes.net



MID MISSOURI STOCKYARDS

REGULAR SALE EVERY THURSDAY 11 AM

SPECIAL COW SALE • AUGUST 14TH • 6 P.M.

For Farm Visits, Market Updates, or Trucking
 Call **Zach Cox 417-777-1320**
Dan Romine 573-578-4939

**Competitive Buyers!
 Competitive Commission!
 Competitive Market!**

Barn: 417-532-9292 
 I-44 • Exit 123 "just outside of Lebanon"
17505 Route 66, Phillipsburg, MO 65722
 For weekly market updates, visit us at www.midmoststockyards.com

ROLL 1959 B.U. MONTICELLO PENNY'S.: First year for these. \$40. Call pm. 573-764-3517.

THE AMERICAN HERITAGE PICTURE HISTORY OF THE CIVIL WAR: By Bruce Carlton, 628 pages, hardback, \$12.50. 417-532-2045. (Leave message and phone number). Lebanon.

NEW HOLLAND 1411 DISKBINE: With roller. \$8,950. 573-765-4406. Richland.

FOR SALE: 1992 Ford F150, needs work. Call 417-217-8551. Cabool.

FOR SALE 3 year old Arabian colt, straight Egyptian, \$1,500 573-263-4749.

BUSY CAMPGROUND IN THE OZARKS: Looking for a hard working couple to assist, host and general maintenance. Salary & housing included. Must be self-motivated with a good attitude. 417-588-1631. Lebanon.

Where it's always a bull market!

Angus - Brangus - Ultrablacks

WALL STREET CATTLE CO.

14603 HIGHWAY KK, LEBANON, MO
 417.288.4444 • WALLSTREETCATTLE.COM

RARE CAR, 53 INDY PACE CAR CONVERTIBLE: Excellent condition, to many new parts to list. \$20,000. 636-583-4338. Union.

6-FOOT 3-POINT WOODS FINISH MOWER: \$850. 417-322-3404. Springfield.

WANTED: 4 to 6 laying hens, reasonably priced. 417-462-1214. (Leave a message). Lebanon.

FREE TO A GOOD HOME: Give away 78 rpm records 1930's - 1950's. Complete list provided - call 573-546-6681. Leave message. Most are clean & fair condition - they are originals.

JR'S 3rd Annual CONSIGNMENT AUCTION

Friday, September 24, 2021

Levi Zook, 4875 Hwy BB Hartville, MO 65667
417-741-2070 • 417-741-2312

Directions: From Lebanon, MO take Hwy 5 South approx. 30 miles to Hwy Z, left on Z, 2 miles to Hwy E, right on E to Hwy BB, right on BB to auction on left.

Now taking consignments for farm machinery, horses, antiques, guns, households, and tools. Large selection of farm machinery, antiques, and hand tools already consigned. Loads coming from Wisconsin, Kansas, Iowa, Kentucky, and the surrounding areas.

Now Taking Consignments!
Advertising deadline August 20th
Auctioneer: Martins Auctions

Commission Rates: 15% - up to \$100; 10% - up to \$500; 7% - %500 & up • \$300 cap




To consign horses call Reuben Glick 417-554-3201

**HEALTHCARE
MADE EASY**

**WE CAN HELP YOU NAVIGATE
HEALTHCARE.GOV**



**Choices In Health
& Life Insurance**
Mike Eblen, Agent
417-532-3360
238 S. Jefferson Avenue Suite A, Lebanon

Pine Ridge Rustic
Log Home Building Supplies



Services Offered!

- Installation
- Pre-finishing available on interior & exterior
- Dealer for exterior stains

www.pineridgerustic.com
523 CR 2410 • Salem, MO 65560 • Ph: 573-729-7226

- Log Siding
- Beveled Siding
- Car Siding • Red Cedar
- Western Cedar • Pine

SNAPPER RIDING MOWER: Needs a tune-up & tire tubes. Only \$95. 573-364-7465. Rolla.

HISTORY OF THE SCHOOL OF THE OZARKS: at Point Lookout. \$5.00. 417-532-2045. (leave message and phone number). Lebanon.

GERMANESE PUPS FOR SALE: Facebook page, Apache Germanese. 417-876-2555. Osceola.

FREE TO GOOD HOME: Mixed breed puppies, mother English Shepherd. 417-288-1009. St. Roberts.

MURRY RIDING MOWER: Good tires, deck, blades, 5-speed, needs motor. \$150-

\$13,000. 573-765-4406. Richland.

LANDPRIDE PLAINSMAN 15FT HYDRAULIC FOLD BRUSHCUTTER: \$6,800. 573-765-4406. Richland.

BRUSHHOG 3210: 10ft heavy duty pull type brushcutter. \$6,500. 573-765-4406. Richland.

HEAVY HOMEMADE BALE UNROLLER: \$400. 573-765-4406. Richland

FORD 4610 DIESEL TRACTOR: Canopy, 2000 hours 52HP with Brush hog loader 573-765-4406. Richland

BITTERSWEET EARTH BOOK: Edited by Ellen Gray Massey of Lebanon, 405

pages, \$9.50. 417-532-2045. (Leave message and phone number.) Lebanon.

IHC 1086 DIESEL TRACTOR: Cab, all new ac, 130 hp. \$13,000. 573-765-4406. Richland

SPECIALIST FROM "HARDSCRABBLE" BOOK: by Elbert Crittenden Traw, DDS. Life in Stoutland/Richland/Camden County area. Hardback, \$5.00. 417-532-2045. (Leave message and phone number.) Lebanon.

JOHN DEERE 4230 DIESEL TRACTOR: Cab & cold air, 100 hp. \$13,500. 573-765-4406. Richland.

IHC 10 FT. WHEEL DISK: \$1,800. 573-765-4406. Richland.

Team Electrical & Plumbing
"The Professionals you can count on"
Electrical • Solar Power • Plumbing • Lighting Installation

100 % Satisfaction Guaranteed	Fully Licensed & Insured	\$100 Estimates with upfront pricing
-------------------------------------	--------------------------------	--

For the best quality of work every time...
Give "Team" a call today!
417-349-6200 • www.teamelectricalplumbing.com

gun trade. 573-364-7465. Rolla.

OAK TABLE – FOUR CHAIRS: \$250, Pine heart day bed with mattress, good shape \$75.00. 417-543-8261. Ava.

1949 STUDABAKER 1½ TON TRUCK: One family owner, all original, no rust, garage kept, flat head 6-cylinder, 4 speed. 573-880-9178 or 573-880-9456. St. Genevieve.

ROUTE 66 – THE MOTHER ROAD BOOK: by Michael Wallis. Hardback, 243 pages, \$12.50. 417-532-2045. (leave message). Lebanon.

IHC 986 DIESEL TRACTOR: Canopy, TA 105 HP with Westendorf TA28 loader.

MEET & GREET
COME CHECK OUT THE NEW SALEBARN!

**FRIDAY,
AUG. 13TH
12 - 8 PM**

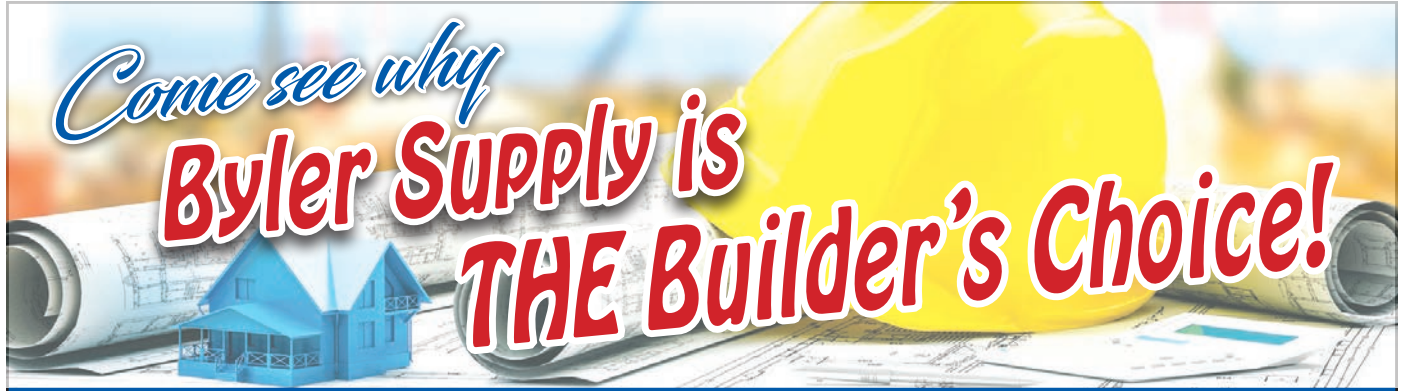
WRIGHT COUNTY LIVESTOCK AUCTION, LLC



WRIGHT COUNTY LIVESTOCK AUCTION

SNACKS & DRINKS WILL BE SERVED !!

WE CAN'T WAIT TO VISIT WITH YOU!



Metal Roofs Designed To Look Great On Your Home!



Good quality, quick service

NEXT BUSINESS DAY SERVICE
Call for details.



CUT TO LENGTH PANELS
GALVALUME METAL UNPAINTED 25 YEAR WARRANTY
#1 Standard Panels, 29 Ga.

\$96.50



24x40x10 • 24x32x10 • 30x40x10 • 30x40x12 • 40x60x12

All Buildings Quoted Have #2 Lumber And #1 Galvalume Or Limited Lifetime Painted Metal

All Buildings Are Heavy 29 Ga. Metal, Three 2"x6" T&G Splashboards, All Poles 5"x5" Or Larger, CCA Treated, Fully Trimmed With One 3'x6' Walk-Through Door & One Large Sliding Door.

Plus Tax, Labor & Delivery Available On All Building Packages.
Prices may vary due to local code restrictions.

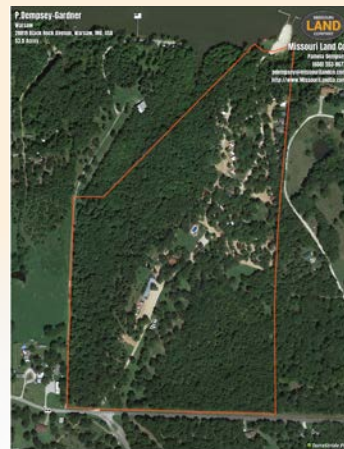
YOUR LAND AND FARM EXPERTS!

Benton Co-53 Acres

\$2,900,000



I am honored to be able to present this immaculate RV Campground for sale! The owners have created a special place and put lots of love and care into creating a wellrunning, profitable resort. This campground includes a total of 53 acres where you will find 64 annually leased RV sites with full hookups, 14 full hookup overnight/monthly sites, a pizza and ice cream shop, an inground pool surrounded by a deck and covered pavilion, an 8 slip boat dock, and a pier. There's also covered and uncovered boat and RV storage. You'll be pleased to know there are housing options as well. A 3 bed 2.5 bath home is located at the heart of the campground. This makes a great home for the owner/manager, or it could be offered as a rental. There is also a nearly new, metalsided guest house containing 1 bedroom and 1 bathroom with a detached oversized garage. Again, an excellent option for the owner to live in or rent out. The improvements that have been made to this property are nothing short of spectacular.



The owners have completely reworked the infrastructure to include 11 DNR approved septic systems and all new electric lines. The pizza and ice cream shop is a huge hit with customers and business was steady in and out the whole time I was there viewing the property! Poolside, you'll be amazed at the quality of work that went into putting a new deck and fence around the perimeter and the covered pavilion provides an excellent location for campground events and cookouts! The owners have done a fantastic job of providing an RV resort that offers all the amenities a camper could hope for, and in the process, No corners were cut in doing the work. So you can purchase this park knowing that the structures are sound and the work has already been done to provide your customers with a fantastic experience. In fact, everyone loves it so much, the annual sites are fully booked and there's a waiting list. The overnight/monthly sites are also currently full with several of those campers hoping to have a chance to move to an annual site as well! There is already an 8 slip dock in place. Each slip is leased annually and is also full with a waiting list at this time. There are plans in place to bring enough power down to the dock to supply the current 8 slips, as well as another dock that can be added by the new owner where the pier is, and enough power for the future owner to add even more improvements... a marina perhaps?! This campground is truly turn-key and you can start turning a profit day one. On top of that, there is a ton of room to expand throughout the rest of the acreage as well as along the shoreline. Don't let this amazing opportunity pass you by! You have to come view this special place to see for yourself what a great business opportunity it is! Call Pamela Dempsey today at 660-553-8677 to schedule a tour of the park!

Cole Co-57 Acres

\$456,000



Properties like this don't come up for sale often! Here is a beautiful 57 acre property with a good mix of woods and old growth field minutes outside of Jefferson City. Enjoy the peace and quiet of country living, while still taking advantage of the conveniences the city offers. Whether you are looking for a place to build your dream home, some prime hunting land, or maybe land to raise cattle, horses or other animals, this property is for you. Access to the property is granted by a deeded easement. There is currently a pending public record lawsuit pertaining to the ingress/egress access to property. Call Jared Martin at (573) 291-1977 for more information or to schedule a showing.



**MISSOURI
LAND
COMPANY**

Farm, Home & Hunting Properties

**Rolla Office:
12647 S. Hwy 63, Rolla
573-308-4868**

**Cole Camp Office:
14981 Centerline Ave.,
Cole Camp
660-668-4868**

www.missourilandco.com • 660-668-HUNT

Toll FREE number for both locations 844-974-1850

WE BUY White Oak Logs!

- ✓ Top prices for your logs
- ✓ Experienced log buyers
- ✓ Professional service

Chad Cook | Salem Wood Products

417.718.2950

5 miles north of Salem, MO on Hwy 19



**INDEPENDENT
STAVE COMPANY**
Log Procurement & Sales

www.independentstavecompany.com

WANTED used 8.25x20 truck tires 417-683-7843

WANTED TO BUY: John Deer diesel tractor in need of repair. Call 573-768-0068.

100 VINYL RECORD ALBUMS: Mostly county some gospel. Take all \$2.00 each. 573-689-2490. Bunker.



**Wright Spray Foam
Insulators, LLC**
Commercial & Residential
Call for FREE Estimates!

Ervin Gingerich

417-926-2052

B. Eli Yoder

417-746-4932

85 DODGE SHORT BED 360 4x4 \$1,200
417-532-5670.

JD 693 CORN HEAD 6-30 inch, good
condition, \$10,000. 417-646-8807.

1950 FORD 2 DOOR good body and tires,
yard drive \$4,250 Trade? 417-683-7843.

**JOHN DEERE 6 FT. 3-POINT FINISH
MOWER:** \$1,600. 573-765-4406.
Richland.

JOHN DEERE 2755: Diesel tractor, cab &
cold air, 75hp, with JD620 loader. \$19,950.
573-765-4406. Richland.

JOHN DEERE 467 ROUND BALER:
Monitor, kicker, net wrap. \$10,850. 573-765-
4406. Richland.

JOHN DEERE 4020 DIESEL TRACTOR:
Power shift, turbo. \$9,500. 573-765-4406.
Richland.

AUSTRALIAN SHEPHERDS for sale, blue
merle, red and whites, out of working parents,
573-663-7459.

CUTTING BOARD: Fits in kitchen counter
top, various species of ducks. \$15.00. 636-
239-2695. Washington.



BACK TO SCHOOL BEACH BASH!

SATURDAY, AUGUST 21 • EVENT STARTS AT 3 PM

Day Traders Grill at the beach.

Bring your own beach chair.

Open to the public for
swimming and beach games.

**\$10 pulled pork
sandwich, chips
and soda.**



THE EXCHANGE
AT WALL STREET

417-344-1234 • Lebanon
14900 Highway KK

Larry Heisel Rentals
LARGE or SMALL...
We Rent!
 Crawler Loaders • Excavators • Backhoes
Call Larry! *We Deliver!*
573-779-1500
 www.larryheiselequipment.com
 Rental Available in 636 or 573 area code

Gun Show
Sat. August 21st • 9am - 5pm
Sun. August 22nd • 9am-3pm
 The Red Shed Event Center
 Exit 179 Doolittle, MO

Come to the Gun Show!
Buy • Sell • Trade

Admission \$5.00 Cash or Check (10 and under free).
For More information call 573-341-5450 or 573-465-0642

THE HEART OF THE SPRING BOOK. A Bennett Spring Novel by Laura L. Valenti, 161 pages. \$6.50. 417-532-2045. (Leave message and phone number). Lebanon.

65 MASSEY FERGUSON TRACTOR: propane, with an older brush hog \$3,500 417-840-7936

2006 LINCOLN TOWN CAR SIGNATURE SERIES: \$4,300. 573-689-2490. Bunker.

ROUTE 66 – THE MOTHER ROAD BOOK: by Michael Wallis. Hardback, 243 pages, \$12.50. 417-532-2045. (leave message). Lebanon.

SWISHER COMMERCIAL PRO 52” ROUGH CUT ATV TRAIL CUTTER: 14.5 HP Kawasaki motor. Rated for up to 3” material. Like new, \$3,450. 417-270-1505. West Plains.

SONY SOUNDBAR AND SUBWOOFER: With remote. \$100 OBO. 417-668-7793 landline. No text. Falcon.

ENGLISH SHEPHERD puppies, bob tails, some not, out of working parents, 573-760-5157.

L3200 KUBOTA 4WD TRACTOR: 31 hp, with loader, hydrostat transmission. Low hours. \$18,900.00. 417-270-1505.

POWER WASHING, CALL JET STREAM POWER WASHING FOR ALL OF YOUR GRIM TO SHINE NEEDS:

We wash it all, semis, stock trailers, campers, equipment, houses, buildings and driveways. If it has grime, call today to make it shine in no time! 417-270-1075. Potosi.

L4600 KUBOTA 4WD TRACTOR: 45 hp, with loader. \$23,500.00. 417-270-1505.

NEW HOLLAND 1411 DISKBINE: With roller. \$8,950. 573-765-4406. Richland.

ROUTE 66 DINING 7 LODGING GUIDE: 183 pages, \$5.00. 417-532-2045. (leave message) Lebanon.



KENT

AFC™ stands for Altosid® Fly Control.

Altosid is the most effective insect growth regulator for the control of horn flies for cattle on pasture.

- .4% AFC™
- MG Aureo/AFC™
- Pasture Aureo/AFC™
- Pasture Breeder Aide® Aureo/AFC™

Built on Trust
EST. 1927

kentfeeds.com

YOUR TRUSTED SOURCE FOR QUALITY FEED & FARM-LIFE ESSENTIALS



Portable Feed Bins Ready For Your Farm!




“DOING BUSINESS ON OUR WORD AND A HAND SHAKE”
 Located in the Heart of the Amish Mennonite Community!
 417-345-8600 • 19 Prairie Lane, Buffalo

Kropf Feeds

KENT FRAMEWORK 365 MINERAL
 Buy 10 Get 1 FREE While Supplies Last

POOL TABLES: Installations, moves, recovers, repairs, accessories, etc. 573-646-1700.

OZARK EMPIRE FAIR-SPRINGFIELD 60TH ANNIVERSARY COOKBOOK: 1937-1996, 144 pages. Prize winning recipes from the fair. \$9.50. 417-532-2045, (leave message) Lebanon.

1949 STUDABAKER 1½ TON TRUCK: One family owner, all original, no rust, garage kept, flat head 6-cylinder, 4 speed. 573-880-9178 or 573-880-9456. St. Genevieve.

WEATHERED BARN WOOD SIDING: 10" wide. 573-729-7226. www.pineridgerustic.com Salem.

FERTRELL ORGANIC FERTILIZER: Free Catalog. 315-796-4370. Caulfield.

NEW RUGER LCPII .380: \$369.98. EC9s 9mm, \$279.37. SCCY CPX2 Red Dot, \$349.99. Heritage 22LR, \$129.81. rollingmead.com 417-241-1523. Marshfield.

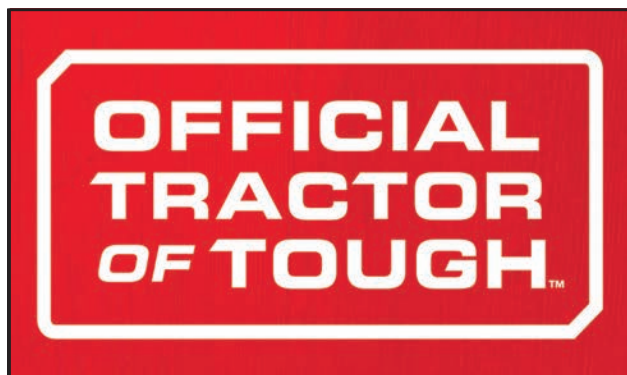
USED MOBILE HOMES: Call David at VILLA HOMES IN ROLLA 573-578-8072. Rolla.

IHC 10 FT. WHEEL DISK: \$1,800. 573-765-4406. Richland.

HISTORY OF THE SCHOOL OF THE OZARKS: at Point Lookout. \$5.00. 417-532-2045. (leave message and phone number). Lebanon.

LOG SIDING: 2X8 Pine/Western Cedar www.pineridgerustic.com 573-729-7226. Salem.

BUYING MOBILE HOMES: Call David at VILLA HOMES IN ROLLA 573-578-8072. Rolla.



Marshfield Machinery Inc.
 222 E. Madison • Marshfield, MO 65706
 417-859-2117 • www.marshfieldmachinery.com

MahindraUSA.com © 2020 Mahindra USA Inc.

Mahindra
Rise.

NEW MAHINDRA TRACTORS

1626 4WD & LDR 26HP
IN STOCK

1635 4WD & LDR 36HP
IN STOCK

2638 4WD & LDR 37HP
IN STOCK

USED TRACTORS

IHC 826 92 HP 9,000

USED ROUND BALERS

HESSTON 945 4X5 9,000

JOHN DEERE 375 5X4 3,500

HESSTON 560 5X6 2,000

NH 850 5X5 1,500

USED MISC.

HAYBUSTER 107C NOTIL
DRILL 17,500

FRONTIER BALE PROCESSOR
8,500

BUSH HOG 3510 10FT 8,000

SNAPPER ZERO TURN 2,750

BUSH HOG 2052 ZERO TURN
2,500

BUSH HOG POST HOLE
DIGGER 1,200

Marshfield Machinery Inc.
 222 E. Madison
 Marshfield, MO 65706
 417-859-2117
www.marshfieldmachinery.com

Starnes Auto LLC
 22115 Rt. 66 • Lebanon, MO 65536
 417.718.2707 Cell
 417.588.3159 Office
www.starnesauto.com

2003 FORD MUSTANG CONVERTIBLE
 WHITE, 150,XXX MILES \$3,200

2004 DODGE DAKOTA 4DR 2WD
 RED, 240,XXX MILES..... \$3,200

2004 GMC SIERRA EXT CAB
 BLUE, 174,XXX MILES..... \$7,250

2004 GMC SONOMA 4DR 4WD
 PEWTER, 154,XXX MILES..... \$6,500

2006 CHEVY COBALT
 BLUE, 225,XXX MILES..... \$2,500

2010 CHEVY TAHOE
 WHITE, 152,XXX MILES \$11,500

WE DO ALIGNMENTS!

JOHN DEERE 2755: Diesel tractor, cab & cold air, 75hp, with JD620 loader. \$19,950. 573-765-4406. Richland.

STAY-TUFF FENCE, Johnson concrete waterers, waterlines, hydrants, posts, panels, hydraulic hoses, & GOOD FOOD. Farmers Quik Stop. 417-991-1938. Lebanon.

AUSTRALIAN SHEPHERDS for sale, blue merle, red and whites, out of working parents, 573-663-7459.

I BUY.....used mobile homes.: Call or text 573-338-6250 or email GregS.CDH@outlook.com

RARE CAR, 53 INDY PACE CAR CONVERTIBLE: Excellent condition, to many new parts to list. \$20,000. 636-583-4338. Union.

PARTS 4400 COMBINE MOTOR: Straw Walkers Raidator, 4420 Combine good machine, will part out. 636-384-6114. Wright City.

AG & CONSTRUCTION REPAIRS & REBUILDS

20+ Years Experience
 Cast Iron & Steel Welding
 Engines • Transmissions
 Electrical • Hydraulics
 PTO & Drivelines
 Tractors & Skidloaders etc.

VALLEY SHOP • 660-458-6747
 38745 Molasses Mill Rd, Latham

THE MOST COMPLETE LINE-UP IN THE INDUSTRY

Cutting widths from 36" to 104"



HUSTLER

For Outstanding Products & Service

AGRI-ENTERPRISES

1-1/2 Miles South Of Licking, MO On Hwy 63
573-674-2203 • 1-800-653-7152
www.agri-enterprises.com

WANTED, TIMBER TO LOG ON SHARES: Honest, reliable, references. 417-533-4607, 417-664-1195. Lebanon.

WANTED TO BUY ANTIQUE CARS: Convertible, Corvettes, unrestored, motors, parts considered. 870-324-1154. Ash Flat.

WANTED TO BUY DODGE DIESEL TRUCK: Or Toyota Tacoma. Also, buying antique cars. 870-324-1154. Ash Flat.

CONWAY HIGH SCHOOL BEARS 2000-2001 YEARBOOK. \$12.50. 417-532-2045. (Leave message and phone number.) Lebanon.

TINY TINY TINY Homes Homes Homes – Call Marla 573-657-7040 chateauhomes.net

BUSY CAMPGROUND IN THE OZARKS: Looking for a hard working couple to assist, host and general maintenance. Salary & housing included. Must be self-motivated with a good attitude. 417-588-1631. Lebanon.

DARDEN PROFESSIONAL TIMBER HARVESTING, BUYING STANDING TIMER: Great prices, improve wildlife habitat and improve forest health. State Certified & Fully Insured! 573-247-4808 or 573-739-1122. Salem.

REGISTERED HEREFORD & ANGUS BULLS: Home raised, Some Show-Me Select Qualified. 573-701-7828. Belgrade.

CALL DUCKS & BIRMINGHAM ROLLERS: Call color, gray, pastel, blue fawn, blacks & blue bibs. 573-702-4022. Bismark.

WANTED, TIMBER TO LOG ON SHARES: Honest, reliable, references. 417-533-4607, 417-664-1195.

FIREARMS: Professional Repairs and Restorations. Baron's Gunsmithing. 573-363-5801, Camdenton.

KUSTER LOGGING

BUYER of Standing Timber Oak and Walnut

Dozing Now Available

417-259-0047

References Available



TINY HOMES – You gotta see these!! In Ashland. amegamobilehomes.com 573-657-2176.

THEY ARE HERE Tiny homes cute, cute, cute columbiadiscountnhomes.com

LANDPRIDE PLAINSMAN 15FT HYDRAULIC FOLD BRUSHCUTTER: \$6,800. 573-765-4406. Richland.

Now Hiring

Entry Level Production Technicians
 Fulton, MD & Vandalia, MD
 On The Job Training Provided

- Excellent Wages • Full Benefits

Skilled Positions
 Mexico, MD
 • CNC Machinist • Die Designer

www.thinkhwi.com/careers




HWI HarbisonWalker International



YOUR AD GOES HERE!

Add YELLOW Color For An Additional \$3 Per Reader Ad

All ads will include Phone Number (unless requested to be deleted by advertiser) and City Or Town, Phone Number with Area Code counts as one word. City or Town counts as one word.

RATE: 80¢ Per Word. All Classified Ads Require Payment Before Print.

(1) 80¢	(2) \$1.60	(3) \$2.40	(4) \$3.20
(5) \$4.00	(6) \$4.80	(7) \$5.60	(8) \$6.40
(9) \$7.20	(10) \$8.00	(11) \$8.80	(12) \$9.60
(13) \$10.40	(14) \$11.20	(15) \$12.00	(16) \$12.80
(17) \$13.60	(18) \$14.40	(19) \$15.20	(20) \$16.00
(21) \$16.80	(22) \$17.60	(23) \$18.40	(24) \$19.20
(25) \$20.00	(26) \$20.80	(27) \$21.60	(28) \$22.40
(29) \$23.20	(30) \$24.00	(31) \$24.80	(32) \$25.60
(33) \$26.40	(34) \$27.20	(35) \$28.00	(36) \$28.80
(37) \$29.60	(38) \$30.40	(39) \$31.20	(40) \$32.00

Place your Classified Ad TODAY!

417-532-2800 • 800-665-8875

Fax: 417-532-8140

Or Mail To: P.O. Box 192 • Lebanon, MO 65536

For your convenience we accept MasterCard, Visa, Discover or American Express



DEADLINE FOR CLASSIFIED ADS: FRIDAY 4:00PM!

Name _____

Address _____

City _____ Email _____

State _____ Zip Code _____ Phone _____

Ad Total \$ _____ X # Weeks _____ = Amount Enclosed \$ _____



**You own the land.
Make it yours.**

Compact Tractors Performance-matched attachments **20.9-62 HP**



(417) 777-2391
quarleskubota.com

Save big on our #1 selling* sub-compact and compact tractors, featuring the versatility to handle every job and a wide range of performance-matched attachments. Stop in for a demo and to claim this offer on select models today.

\$0 DOWN 0% APR UP TO 60 MONTHS
 PLUS
SAVE UP TO \$1,000

VISIT US TODAY FOR THIS LIMITED-TIME OFFER

L2501DT w/loader **New L2501DT w/Loader Deal!**
\$23,995
Financing Price

- NEW Kubota L2501DT
- 4wd, DIESEL, AG TIRES
- KUBOTA LOADER
- 5' ROTARY CUTTER
- 5' BOX BLADE
- NEW 18' KODIAK TRAILER W/RAMPS



KubotaUSA.com

*Based on EDA tractor sales data of under 20 horsepower models from 2009 to 2019. © Kubota Tractor Corporation, 2021. \$0 Down, 0% A.P.R. financing for up to 60 months on purchases of new Kubota BX, B, LX and L series equipment from participating dealers' in-stock inventory is available to qualified purchasers through Kubota Credit Corporation, U.S.A.; subject to credit approval. Example: 60 monthly payments of \$16.67 per \$1,000 financed. Customer instant rebates of \$500 are available on qualifying finance or \$800 on cash purchases of BX2680 equipment. Additional instant rebate of \$500 is available with purchase of one new qualifying implement. Some exceptions apply. Offers expire 6/30/21. Terms subject to change. This material is for descriptive purposes only. Kubota disclaims all representations and warranties, express or implied, or any liability from the use of this material. For complete warranty, disclaimer, safety, incentive offer and product information, consult your Dealer or KubotaUSA.com.