

FREE - TAKE ONE!

Vol. 28 No. 17

JULY 22, 2021

800-543-8271 • 800-665-8875

WEEKLY TRADER MAGAZINE



Find us on Facebook

@myweeklytrader AUCTIONS PG. 8

VISIT OUR NEW WEBSITE! MYWEEKLYTRADER.COM



You own the land. Make it yours.

Compact Tractors Performance-matched attachments 20.9-62 HP

Kubota Together we do more.®

QUARLES
SUPPLY COMPANY INC.

(417) 777-2391
quarleskubota.com

Save big on our #1 selling* sub-compact and compact tractors, featuring the versatility to handle every job and a wide range of performance-matched attachments. Stop in for a demo and to claim this offer on select models today.

\$0 DOWN **0%** APR UP TO **60** MONTHS
PLUS
SAVE UP TO **\$1,000**

VISIT US TODAY FOR THIS LIMITED-TIME OFFER

New L2501DT w/Loader Deal!

L2501DT w/loader **\$22,995**
Financing Price

- NEW Kubota L2501DT
- 4wd, DIESEL, AG TIRES
- KUBOTA LOADER
- 5' ROTARY CUTTER
- 5' BOX BLADE
- NEW 18' KODIAK TRAILER W/RAMPS



KubotaUSA.com

*Based on EDA tractor sales data of under 20 horsepower models from 2009 to 2019. © Kubota Tractor Corporation, 2021. \$0 Down, 0% A.P.R. financing for up to 60 months on purchases of new Kubota BX, B, LX and L series equipment from participating dealers' in-stock inventory is available to qualified purchasers through Kubota Credit Corporation, U.S.A., subject to credit approval. Example: 60 monthly payments of \$16.67 per \$1,000 financed. Customer instant rebates of \$500 are available on qualifying finance or \$800 on cash purchases of BX2680 equipment. Additional instant rebate of \$500 is available with purchase of one new qualifying implement. Some exceptions apply. Offers expire 6/30/21. Terms subject to change. This material is for descriptive purposes only. Kubota disclaims all representations and warranties, express or implied, or any liability from the use of this material. For complete warranty, disclaimer, safety, incentive offer and product information, consult your Dealer or KubotaUSA.com.

Land

For Sale

Dallas Co., MO • 44.82 +/- Acres



\$159,500

- Multiple 150-160 class deer in the area with 1000s of acres of QDMA neighbors and Nature Conservancy
- Very nice timber tract just minutes to Bennett Springs State Park and world-class trout fishing
- Property is the perfect set up for deer and turkey hunting with excellent food plots and stand locations all in place
- Nice cabin with good trail system for easy access
- Property is 15 minutes to Lebanon, 45 minutes to Springfield, and 2 hours to St. Louis, located on black top road
- Water consists of small creek
- Great building sites for cabin or home
- Black top road frontage



WHITETAIL PROPERTIES REAL ESTATE

HUNTING | RANCH | FARM | TIMBER

Brian Utecht | 417-766-5595

Brian.Utecht@whitetailproperties.com

WHITETAILPROPERTIES.COM

Missouri's Top Land Specialist in 2014,
2015, 2016, 2017, 2018 and 2019





**THE MOST COMPLETE
LINE-UP IN THE INDUSTRY**

Cutting widths from 36" to 104"



For Outstanding Products & Service

AGRI-ENTERPRISES

1-1/2 Miles South Of Licking, MO On Hwy 63

573-674-2203 • 1-800-653-7152 • www.agri-enterprises.com

ROUTE 66 – THE MOTHER ROAD BOOK: by Michael Wallis. Hardback, 243 pages, \$12.50. 417-532-2045. (leave message). Lebanon.

POOL TABLES: Installations, moves, recovers, repairs, accessories, etc. 573-646-1700.

WEATHERED BARN WOOD SIDING: 10" wide. 573-729-7226. www.pineridgerustic.com Salem.

STAY-TUFF FENCE, Johnson concrete waterers, waterlines, hydrants, posts, panels, hydraulic hoses, & GOOD FOOD. Farmers Quik Stop. 417-991-1938. Lebanon.

FERTRELL ORGANIC FERTILIZER: Free Catalog. 315-796-4370. Caulfield.

LOG SIDING: 2X8 Pine/Western Cedar www.pineridgerustic.com 573-729-7226. Salem.

CONWAY HIGH SCHOOL BEARS 2000-2001 YEARBOOK. \$12.50. 417-532-2045. (Leave message and phone number.) Lebanon.

USED MOBILE HOMES: Call David at VILLA HOMES IN ROLLA 573-578-8072. Rolla.

BUYING MOBILE HOMES: Call David at VILLA HOMES IN ROLLA 573-578-8072. Rolla.

WANTED TO BUY ANTIQUE CARS: Convertible, Corvettes, unrestored, motors, parts considered. 870-324-1154. Ash Flat.





TINY HOMES – You gotta see these!! In Ashland. amegamobilehomes.com 573-657-2176.

THE BITTERSWEET OZARKS AT A GLANCE BOOK: By Ellen Grace Massey of Lebanon, hardback, 219 pages, \$12.50. 417-532-2045 (leave message and phone number). Lebanon.

VOTED #1 BEST Preowned Car Dealership

TIM'S USED CARS

(573) 341-3828 • 1334 South Bishop (Hwy. 63) • Rolla, MO
Next to Hwy CC • www.tims-used-cars.com

 <p>2018 RAM 3500 TRADESMAN 6.7 Diesel, Auto, 123,xxx Miles, Power Equipped Only \$47,500</p>	 <p>2007 CADILLAC DTS 4.6 V8, 83,xxx Miles, Loaded w/ Options Only \$6,200</p>
 <p>2014 RAM 1500 TRADESMAN Quad Cab, 2WD, V6, Auto, Power Equipped, 71,xxx Miles Only \$19,800</p>	 <p>2016 GMC ACADIA SLT AWD, 130,xxx Miles, Loaded w/ Options Only \$18,900</p>

LARGE SELECTION OF CARS, TRUCKS, SUVs & VANS!

THEY ARE HERE Tiny homes cute, cute, cute columbiadiscountshomes.com

I BUY.....used mobile homes.: Call or text 573-338-6250 or email GregS.CDH@outlook.com

Larry Heisel Rentals
LARGE or SMALL...



We Rent!

Crawler Loaders • Excavators • Backhoes

Call Larry! We Deliver!

573-779-1500
www.larryheiselequipment.com

Rental Available in 636 or 573 area code

REGISTERED HEREFORD & ANGUS BULLS: Home raised, Some Show-Me Select Qualified. 573-701-7828. Belgrade.

WANTED, TIMBER TO LOG ON SHARES: Honest, reliable, references. 417-533-4607, 417-664-1195. Lebanon.

ROUTE 66 DINING 7 LODGING GUIDE: 183 pages, \$5.00. 417-532-2045. (leave message) Lebanon.

LIKE NEW ARGENTINE: 1909 German Mauser bolt action 7x65x53 cal, also 300 rounds ammo and reloading dyes. \$950. 573-218-9231. Farmington.

LIONEL TRAIN SET: Steam engine, tender caboose and other car, track and transformer. \$195. 573-364-7465. Rolla.



Cheyenne Acres
 Horse & Tack
BUY - SELL - TRADE
 by Rolla, MO
 Call For Directions & Availability
Call Kip
573-368-9402



WANTED, TIMBER TO LOG ON SHARES: Honest, reliable, references. 417-533-4607, 417-664-1195.

MISSOURI HISTORICAL BOOK: published by State Historical Society of Missouri. \$6.50. 417-532-2045 leave message. Lebanon.

WANTED 4 BASKET MW TEATHER: Any condition or salvage. 417-859-4401. Mansfield.

CUSTOM SAW MILLING: 417-533-4607, 417-664-1195. Lebanon.

450 ROUND BALES: 4X5 Netwrap, good quality. \$50. Bale. 417-345-5634. Phillipsburg.

TINY TINY TINY Homes Homes Homes – Call Marla 573-657-7040 chateauhomes.net



JOHN DEERE

Heritage TRACTOR

0% FINANCING

ON ALL COMPACT TRACK LOADERS AND SKID STEERS



Some restrictions apply, see dealer for details. Offer valid through 8/31/21.



FIREARMS: Professional Repairs and Restorations. Baron's Gunsmithing. 573-363-5801, Camdenton.

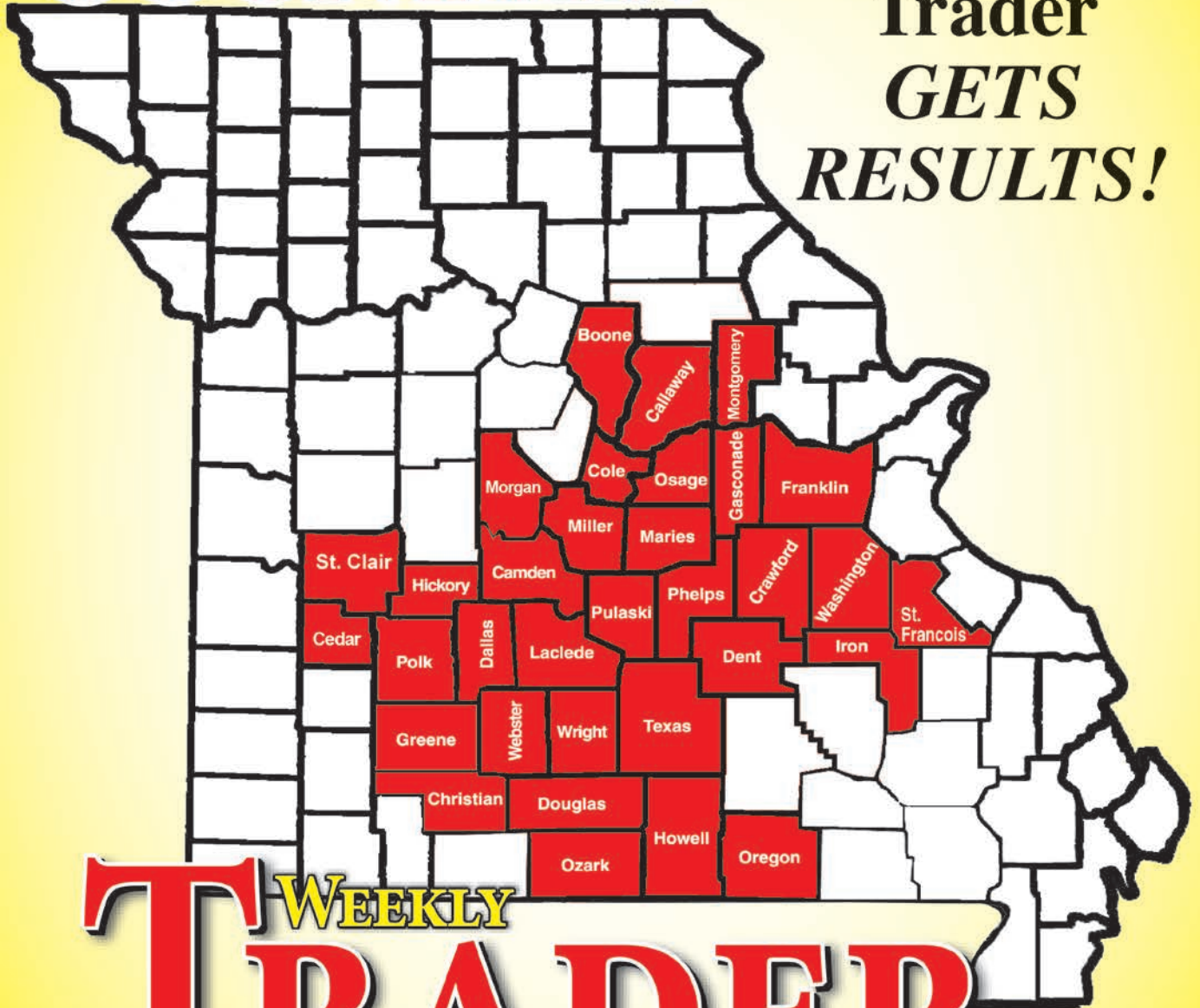
ALLIS CHALMERS 7 FT BLADE: With Allis Chalmers hitch, \$200. Allis Chalmers 2 bottom plow \$200. 417-753-2747. Rogersville.

MOEN KITCHEN FAUCET: Single lever, sprayer, new cartridge. \$45 obo. 636-239-2695. Washington.

HISTORY OF THE SCHOOL OF THE OZARKS: at Point Lookout. \$5.00. 417-532-2045. (leave message and phone number). Lebanon.

This is...
**WEEKLY TRADER
 COUNTRY!**

**The Weekly
 Trader
*GETS
 RESULTS!***



T **WEEKLY**
TRADER
MAGAZINE

Place Your Ad With Us Today!

417-532-9131 CHECK US OUT ONLINE AT: myweeklytrader.com

CALUS LOGGING
20 YEARS EXPERIENCE
Buying Standing Timber
 Walnut & Oak
Joe Calus, Owner
417-926-4606 • MTN. GROVE
 CERTIFIED

Is Your Log Home UGLY?
 Starting To Look
Professional Staining & Repair
 (Log Homes & Wood Siding)
 Call **Pine Ridge Rustic**
 Log Home Building Supplies **573-729-7226**
www.pineridgerustic.com

JACK LALANNE JUICER: New \$40. 417-217-8504. Falcon.

ONE DOUBLE SET OF WHEEL CHOCKS: Safety yellow. \$30 obo. 636-239-2695. Washington.

DARDEN PROFESSIONAL TIMBER HARVESTING, BUYING STANDING TIMER: Great prices, improve wildlife habitat and improve forest health. State Certified & Fully Insured! 573-247-4808 or 573-739-1122. Salem.

BLACK ANGUS BULLS: from 12 to 18 months. 417-932-4026. Summersville.

MURRAY RIDING MOWER: Good tires, deck, blades, 5-speed, needs motor. \$150 or gun trade. 573-364-7465. Rolla.

WASHBURN GUITAR: With case, two amps, one small and one large crate. Amps new. \$200 for all. 417-532-6561. Phillipsburg.

PURE BRED FAINTING GOATS. Peacock patterned 3 month-old doeling. Package deal for 2 bucklings. Check www.greenacresvillage.com or call 573-216-7796. Lake of the Ozarks.

WANTED: Old military rifles and pistols. 816-838-6254. Lees Summit.

SMALL SQUARE BALES OF STRAW: 417-932-4026. Summersville.

A FRAME TINY HOUSE/SHED: 6ftx8ft, furnished, new floor, \$995. 573-759-7143. Viene.

LEBANON, MO. CEMETERY BOOK, and Calvary Catholic Cemetery listings. \$10. 417-532-2045. (leave message and phone number). Lebanon.

SNAPPER RIDING MOWER: Needs a tune-up & tire tubes. Only \$95. 573-364-7465. Rolla.

GOSPEL, COUNTRY, ROCK CD'S: \$1 to \$5. 417-217-8504. Falcon.

DE DALIA COFFEE POT: \$40. 417-217-8504. Falcon.

BUYING STANDING CEDAR: Minimum 6-in diameter. 417-531-0403.

WANTED: 1966 to 1977 Ford Bronco. 816-838-6254. Lees Summit.

Call to Order 417-993-3017

Meadowview Dutch Market

Discount & Surplus Groceries • Prices Subject to Stock on Hand

DELI SPECIAL

SMOKED HOT PEPPER CHEESE REG. \$6.39 **SALE \$5.89**

SMOKEHOUSE HAM REG. \$5.49 **SALE \$4.99**

TRY our Fresh Homemade DELI Sandwiches: TURKEY, HAM, ROAST BEEF, ITALIAN, BLT'S, PULLED PORK AND BLT PULLED PORK (MADE YOUR WAY)! COME IN OR CALL to order! ALSO Custom Deli trays! Veggie OR FRESH Meat-N-Cheese!

Fully Cooked Teriyaki or Onion Beef Patties **99¢ LB.**

Original All Natural Pork Loin Fillet **SALE \$1.99 LB.**

Assorted Mrs. Fields Cookie Dough **\$1.49 12 CT. PK.**

Almond Milk **99¢ 64 OZ.**

America Fresh Dish Soap **99¢ 17.5 OZ.**

Ground Beef 81/19 - 3 LB. PK. **\$7.49 EA. = \$2.49 LB.**

Shredded Potatoes **SALE \$2.99 10 LB.**

Ham & Swiss Lunchables **50¢ EA. OR \$7.00 A CASE**

Check Out Our Great Selection of Yogurt

FRESH PEACHES

\$22.99 1/2 BU.

\$5.99 1/2 PECK

PINTO BEANS 69¢ 15.5 OZ.

• FRESH LOCAL VEGGIES
 • FRESH SWEET JUICY PEACHES
 • LOCAL HOMETGROWN SWEET CORN

MEADOWVIEW DUTCH MARKET
 417-993-3017 Hours: Mon-Thurs 8-5pm
 Fri 8-6pm • Sat 8-5pm
 23 Miles West on Hwy 64 • Right on T Hwy
 9 miles • Left on E Hwy 1 mile on Left

NOW ACCEPTING CREDIT, DEBIT CARDS & EBT

DUTCH COUNTRY STORE, LLC
 573-378-4395
 Hours: Mon-Thurs 8-5pm
 Fri 8-6pm • Sat 8-5pm
 5 miles East of Versailles off Hwy C on Kelsay Road

SPECIALIZING IN HEAVY DUTY GATES



Cow Country Gate Sales

Call Randy: 573-569-4754
or Home: 573-539-2528
Located at: Zimmerman Welding
16889 Hwy 52, Barnett, MO



Wright Spray Foam Insulators, LLC
Commercial & Residential
Call for FREE Estimates!

Ervin Gingerich
417-926-2052
B. Eli Yoder
417-746-4932

BLACK 2007 SILVERADO 1500: 4x4 Ext Cab, 165,xxx mi., \$11,600. 417-531-3376. Grovespring.

1950'S COLT REVOLVER DEALERS MEMORABILIA: All for \$100. Call pm. 573-764-3517.

ROLL 1958 B.U. LINCOLN WHEAT PENNY'S: Last year for these. \$60. Call pm. 573-764-3517.

WARSAW, MISSOURI OZARK ECHOES 1964 YEARBOOK, \$20. 417-532-2045. (leave message and phone number). Lebanon.

ROLL 1959 B.U. MONTICELLO PENNY'S: First year for these. \$40. Call pm. 573-764-3517.

TANDEM DISC 8 FT WIDE: 3 point, hitch, like new condition, \$850. 417-753-2747. Rogersville.

FARM RAISED FRESH CATFISH: Pickup/delivered. 573-604-0674. Salem.

COOKBOOK COLLECTION: \$1.00 each. Many varieties. 417-532-2045. (Leave message and phone number). Lebanon.

METAL ROOFS: We repair leaky metal roofs with warranty. Also, flat roofs, very affordable, cover all state. 573-338-1148. Jefferson City.

JOE THEISMAN CAREER STAT AUTOGRAPHED JERSEY: JSA COA. \$95. 573-854-8132. Salem.

BOOTS: Rubber and leather boots and hip waders. Men's 11, Women's 7, some insulated, \$15-\$40 obo. 636-239-2695. Washington.

OZARK EMPIRE FAIR-SPRINGFIELD 60TH ANNIVERSARY COOKBOOK: 1937-1996, 144 pages. Prize winning recipes from the fair. \$9.50. 417-532-2045, (leave message) Lebanon.

NEED SOMEONE TO DO MINOR FENCING: Installing gate & replace post. Must have bobcat for clean-up work and some trimming. Will pay \$1,000. 573-484-6447. Cherryville.

2 MALE BORDER DOODLES: 1 black & white, 1 blue merle, 5 months old. 573-739-9431.

Offering the Area's LOWEST METAL PRICES!

Pole Barn Packages

CALL TODAY FOR A FREE QUOTE!

24'x32'x10'	30'x40'x10'	40'x60'x12'	Sales Tax & Delivery not included. Labor quotes available as well.
24'x40'x10'	30'x60'x10'	CALL TODAY!	

Compare Before You Buy.

We Use Only The **Highest Quality** Materials!



Custom Homes • Metal Roofs

29 Gauge

#1 PAINTED METAL

- ★ Lifetime Warranty - \$99.00 Sq.
- ★ 40 Year Warranty - \$94.00 Sq.
- ★ 20 Year Warranty - \$91.00 Sq.
- ★ 25 Year Galvalume - \$76.00 Sq.

Labor prices will be higher in locations over 75 miles from Marshfield, MO



- ALL MATERIAL PACKAGES INCLUDE...
- ✓ #1 Yellow Pine Lumber
 - ✓ #1-40 Yr. Painted Metal w/Screws
 - ✓ 1-10' Overhead Door
 - ✓ 1-36" Entry Door

Fully Insured



PORTABLE BUILDINGS
Rent to Own
No Credit Check

1049 SCHOOLVIEW DR.
Marshfield, MO



Marshfield BUILDINGS
www.marshfieldbuildings.com



417-859-7744

Sam
CRAWFORD AUCTION SERVICE LLC

As we have sold our farm, will sell the following located 7 miles South of Warsaw, MO on Hwy. 65 to Hwy. 7, then East 5 Miles to Hwy. M, then North 2 Miles to Wolf Hollow Rd., then East 1 1/4 mi. Watch for auction signs

SATURDAY, JULY 31st, 2021 - 9:30 A.M.

PLENTY OF SHADE TRAVEL TRAILER - MACHINERY - TOOLS - HOUSEHOLD PLENTY OF SHADE

TRAVEL TRAILER - BOAT

'07 Chaparral Coachmen 28' 5th Wheel Travel Trailer, 1 Slide Out, Good Appearance, Needs Minor Work

18' Aluminum Jon Boat & Trailer

MACHINERY - TOOLS & OTHER

3 Pt. Box Blade, Rock Rake, Blade, Post Hole Digger

3 Pt. Single Gang Disc 8'

18' Trailer Frame Tandem Axle Lister

Dixon ZTR 16 HP Kohler

Cub Cadet 1024 50" Lawn Tractor, Needs Work

Dixon ZTR 19 HP Lawn Tractor, Needs Work

4x8 Trailer

Bombardier Outlander 330 4-Wheeler

Honda EU 3000 Port. Generator
 Cement Mixer, Electric

Kobalt 30 Gal. Air Compressor
 Air Tank

4' Shop Fan

5 HP Chipper/Shredder

Snapper 5 HP Rear Tine Tiller, Needs Work

250 Gal. Fuel Tank & Stand

125 Gal. Propane Tank

100' Tri Plex Wire

Sev. Joints, PVC Sewer Pipe

16' Farm Gate, Other Gates

Chainlink Fence Dog Pen

Log Chain, Some Steel Posts

5 Rolls Woven Wire

200 Amp Breaker Box

Solar Fencer



2 Goat/Calf Hay Racks

Plastic Yard Storage Chest

Wood Trim

2 Cyl. Military Type Port. Generator

Forney 220 Electric Welder

Stainless Work Table/Cabinet

Craftsman 15" Drill Press

Table Top Drill Press

2 Craftsman Table Saws

Central 14" Band Saw

2 Electric Weedeaters

Ryobi 12" Planer

Chainsaw Sharpener

3 Pr. 22.5 Truck Chains, New

X-Large Dog House

2 Bicycles (1 Schwinn)

Other Misc.

HOUSEHOLD

Grandfather Clock

Settee

Lg. Kenmore Chest Freezer, Newer

Frigidaire Gas Range, Stainless

Frigidaire Double Door Refrigerator, Stainless

Maytag Refrigerator (Out of Trailer)

Vizio 60" Flatscreen TV

TV Stand

Smaller TV

Lg. TV Cabinet/Base

Lg. Jenn Aire BBQ Grill, Stainless

2 Eden Pure Heaters

2 Recliners, 2 Bar Stools

Lg. Wood Dining Table & 6 Padded Chairs

Rd. Wood Dining Table & 4 Chairs

California King Waterbed Frame

Sauna, 3 Sewing Machines

2-3 Wood Desks

3 Plastic Folding Tables, 6'

Wood Embroidery Loom

Laser Printer, Klipsch Speakers

6-8 Bookshelves, Storage Shelves

5-6 Stacking Chairs

Harvest Right Freeze Dryer

Asst. Small Kitchen Appliances

10x12' Carpet, New

Asst. Pots, Pans, Dishes, Utensils

Other Rugs, Some Bedding

Wood Cook Stove, Black

Small Water Purifier

5' Kitchen Base Cabinet

Upper Cabinets, Counter Top

2 Bath Vanities, Peg Board

Patio Canopy Frame

Round Bistro Table & 2 Chairs

Patio Table & 4 Chairs

Retail Display Shelf

Retail Jewelry Display Cabinet

Lotion Filler/Bottler

Essential Oils, Skin Care Oils

Other Misc.

Sam
CRAWFORD LLC
Auction Service



TERMS: Cash or good check. Nothing removed until settled for. Not responsible for accidents. Lunch available. Statements made day of sale take precedence over printed matter. All items sell as is. No warranties given or implied.

417-998-6629
Cross Timbers, Mo.

CrawfordAuctionService.com

Sam 417-328-9137 Chase 417-399-1904 Chance, CAI 417-298-1751 Tom Poynter Jack Lancaster

George & Linda Craig

ELLIS ESTATE AUCTION



Will sell the personal property of the **Ray (Gene) and Dorothy Ellis Estate** at public auction on:

Saturday, July 24th 2021, Beginning at 9:00 AM

Location: 4204 Highway 19 South Owensville Mo 65066 (Bem area)

Directions: From Owensville and Highway 28, go South on Highway 19, 7 miles to auction. From Interstate 44, take Exit 208 and go North on Highway 19, 14 miles to auction. Roads will be marked day of sale.

TRACTOR / SKIDSTEER / IMPLEMENTS / AUTOS

TRAILER (will sell at 12 Noon)



Massey Ferguson 1250 tractor-front wheel assist-16 speed shuttle shift-roll bar-803 hours-will sell with 1246 quick attach loader-one owner, Ford 640 tractor, Farmall H tractor, Case 1845C Uni Loader 2286 hours-(no bucket), Farm King 6' finishing mower, Farm King 5' finishing mower, 3 pt tub seeder, 3 point 5' blade, 3 point slip scoop, **AUTOMOBILES;** 2007 Ford Taurus, 2002 Ford Explorer-Eddie Baur-V6-automatic-4x4-91,000 miles, 1973 Nova-4 door-292-60,000 miles-nice project car, **4 WHEELER;** Honda Rancher ES 4 wheeler-4x4, McCulloch old boat motor, **TRAILER;** 16' double axle trailer, **TIRES;** 12.4-28 Kelly rear tractor tires-new, 6-16 front tires-new

2007 Ford Taurus, 2002 Ford Explorer-Eddie Baur-V6-automatic-4x4-91,000 miles, 1973 Nova-4 door-292-60,000 miles-nice project car, **4 WHEELER;** Honda Rancher ES 4 wheeler-4x4, McCulloch old boat motor, **TRAILER;** 16' double axle trailer, **TIRES;** 12.4-28 Kelly rear tractor tires-new, 6-16 front tires-new



SHOP TOOLS / AUTO BODY SHOP PARTS

Ingersoll Rand 220 single phase upright compressor, Kobalt 60 gallon hi output air compressor-135 PSI-3.5 HP upright, (2) rolling toolboxes-top chests, Craftsman tool bench-storage, new torch set-gauges, Lincoln AC 225-S welder, Craftsman rolling top chest, Black-Decker bench grinder, 10" radial arm saw, hand saws, bolt cutters, rivet tools, nut drivers, sockets, ratchets, wrenches, pipe wrenches, hammers, pliers, open-box end wrenches, circular saw, router, bits, levels, drill, work lights, lot hardware, parts bins, pneumatic tools, solder gun, tap-die set, lg socket set, large bench vise, hand drill, Sears rolling compressor, pipe cutters, lot drill bits, coping saws, pipe clamps, lathe, work tables, work table-grinder-vise, metal shelving, crow Bars, **AUTO BODY SHOP;** Chilton manuals, wagon jack, floor jack, auto body tools, car ramps, come-a-long, automotive pulling post, paper dispenser for spray painting, commercial fans, air hose, car parts, car body parts, shop lights, office cabinets, office chairs

YARD TRACTOR / TOOLS

JIM Dandy small collectible farm tractor with sickle mower-gang mowers-single plow-cultivator, Simplicity 16LTH riding mower-16 HP- 44" deck, Quantum Power 5 HP power washer, lawn roller, weed eaters, limb trimmer, gas cans, pitch forks, potato fork, pick, shovels, rakes, axes, hand seeder, bow saw, shoulder seeder, water hoses, water pump, tow chain, lot bottle jacks, ladders, step ladders

VIEW OUR PHOTO GALLERY ON

www.breheauction.com



ANNOUNCEMENTS MADE DAY OF SALE SUPERSEDE ALL PRINTED MATERIAL.
 TERMS: CASH, PERSONAL CHECKS WITH PROPER I.D., BUSINESS CHECKS WITH BANK LETTER AND NO OUT OF STATE CHECKS UNLESS APPROVED BY SELLER. Email Us At kkauction@sbcglobal.net
 Everything sells as is with no guarantees.
 Not responsible for accidents.

GUNS / OUTDOORS

(guns will sell at 11:30 and will not be on premises until day of sale)



Henry Model H001 .22 caliber rifle, Stevens (Savage) Mod 67 16 gauge, Revelation 410 bolt action, Wards Riverside 16 ga side-by-side, Rossi Plinkster .22, Savage Mod 77 16 ga, Stevens Mod 94 20 ga single shot, Savage Mod 67 20 ga, SKS 7.62x39, **PISTOLS;** Browning Buckmark .22-new, Ruger Wrangler

.22 revolver-new, Smith & Wesson M&P .45-auto, 12 gun storage cabinet, **OUTDOOR;** Osagian aluminum canoe, plastic canoe, fishing poles, lot fish gigs

ANTIQU FURNITURE / HOUSEHOLD



Tiger oak round table, oak dining table-old oak dining chairs, walnut china cabinet, walnut buffet, small kitchen hutch, pair high back wing chairs, pair oak side chairs-fabric-studs, lamp table, large book shelf, coffee-end table set, wood trim sofa, small upholstered chair, oak double bed, small oak secretary, drop side hall table, pie cabinet, tiger oak dresser-harp/beveled mirror, oak carved double bed, oak chifferobe, pine chifferobe, single bed, small desk, chest drawers, mission oak upholstered sofa, wooden desk-chair, oak wash stand, (3) cedar chests, oak carved chair, bedroom set, oak drop front desk-slide out supports, oval dresser mirror, double bed, drop side dining table, TV stand, sofa, leather recliner, leather chair, mission oak library table, chair-sofa set, hall tree, book shelf, Scott tuner-speakers, flatscreen TV, DVD player, clocks, games, lamps, Mo State Manuals, bedding, embroidered pillow cases, office supplies, small floor safe, towels, vacuums, luggage, sewing machine, **KITCHEN/GLASSWARE;** Fire King dishes, glass baking dishes, bread-cake pans, Home Trend dish set, Cannes china dish set, Pyrex dishes, cake pedestal, batter bowl, cups, glasses, Pfaltzgraff cannister set, utensils, pots, all small appliances, crock pot, electric skillet, granite roasters, serving bowls, iron skillet, stemware, cook books, **GLASSWARE;** carnival fruit bowl, opalescent berry bowls, cream-sugar set, pink depression glass pitcher, **APPLIANCES;** (2) refrigerators, small refrigerator, washer-dryer, microwave, **YARD;** iron patio set-table-chairs, propane grill, propane turkey cooker, smoker, concrete yard bench, porch glider, yard statuary, iron bench, volleyball set, croquet, lawn darts, coolers, thermos jugs

ANTIQUES / COLLECTIBLES



Wright anvil, forge, Western Electric oak case wall phone, Busch Bavarian bar light, Miller Light, Falstaff motion light, Sun Drop clock, Stag Beer clock, pedal car, enamel shop lights, steel wheel wheelbarrow, wooden keg, sheep shears, cow bell, yoke, wooden tool carriers, wooden bowling pin, 8-day Sessions shelf clock, old baby dish, German copy Stradivarius ius in wooden case, wood planes, Napa thermometer, Pepsi thermometer, crock jug, camp lantern, metal pulley, trunk, hump back trump, glass insulators, 2-man saws, small child's rocker, Korean era dummy bazooka rocket, old tennis rackets-bats, galvanized square-round wash tubs, MFA oil can, cistem top

AUCTIONEERS NOTE:

Will begin auction at 9:00 selling tools, will start second ring selling household at 10:00 AM. Lots of nice shade.

LUNCH SERVED BY OLD DUTCH MILL



**WILLIAM & ANN DICKHERBER REAL ESTATE & PERSONAL PROPERTY AUCTION
SATURDAY 24TH, 2021 @ 9:30 AM
49 Blackmore Rd., Foley, MO**

Directions: From Troy, MO, take Hwy. 47 east to Hwy. W, take Hwy W to Hwy Y, approx. 1 1/2 miles to Blackmore Rd. Watch for Signs Day of Auction.

REAL ESTATE DESCRIPTION

3 +/- Acres in Saxony Woods Subdivision w/ French/Colonial Home built in 2000, 3,000+/- sq. ft. home, main level laundry/coffee bar, Solid Oak kitchen cabinets, Main Dining room, Master bedroom/ large walk-in shower/bath, w/ huge walk-in closet, 2 bedrooms on main floor, large fire place, hardwood floors throughout the home, 2 bedrooms upstairs w/ foyer & bathroom, downstairs finished w/ 1 bedroom, vinyl plank flooring, home theater room w/ seating, large oak bar as well, oak trim throughout the home, new roof in April 2020, central air throughout home, new insulated siding on home, 500 gallon propane for furnace & hot water heater, central vacuum system, HOA Dues @ \$150 per year, Brand new front door, Large pool out back of home, 20' w/ deck, crown molding all throughout the home, Anderson windows/ Pella Sliding door, septic system, pumped yearly, county water, brand new water softener, Corian Kitchen counters. Garage w/ living quarters upstairs. Large machine shed, 40' x 60', half concrete floor, half rock, 2 double doors, automatic garage doors Insulated shop w/ work benches, 2 AC units in shop, side walk in doors, 20' x 20' lean - to. w/ wine cellar/ storm cellar. Winfield R4 School District
Note: For a private viewing please call office (636) 338-4805

PERSONAL PROPERTY

TRAILERS
Tag Along Trailer, No Title, 6' **GUNS**
2 - Ruger .22 Cal. rifles
ANTIQUE FURNITURE, COLLECTIBLES & GLASSWARE
Stan Musial Home Run Ball, signed
Tony LaRusso Retirement bobble head
St. Louis Cardinals memorabilia
12 piece setting of Fattsgraf set, w/ silverware
Solid Oak Hallway Buffet Chest Drawers
Tiger Oak Buffet
Drop Leaf Table
School Desk
Green Dresser w/ Marble top
Rocking Chair
Radio Flyer wagons
Lot of old picture frames
Lot of Misc. Mills
Wooden Coffee Grinder
Huge collection of Roosters/ chickens
Pink Depression
Green Depression
Hand Painted cups/saucers
Pigeon Blood Pitcher set
Hob Nail Fluted Dishes
Hob Nail Lamps w/ marble bases
Table w/ 6 chairs, buffet, Matching set
Candle Stick Holders
Lot of Tooth pick Glassware Cups
Coal Miner original Coal Statue
Glass Ships
Glassware Roosters/Chickens
Green Rooster Cookie containers
Lot of Fenton
Double Door Glass Front Hutch, solid Oak
Solid Oak Wardrobe, break down

Lots of Handmade Quilts, approx. 20-25
Wall Clock
Antique Cameras
Solid oak Drawers, w/ Lion pulls
Lady's Desk
2 - Bookcases
Cedar Chest
Rustic Butcher Block Island, drawers, beautiful
Granite Bowl & Picture
100 Year old Christmas Ornaments
Crystal Set, cups & all, NICE!
Wildlife Plates w/ certificates
Huge collection of watches
Lot of Records, All Vinyl records, 45's & 33's
Huge Collection Porcelain Dolls
COINS
Lots of Coins, Lincoln cents, etc.
Liberty Coins
Cheerios Commemorative coin
Steel Pennies
Buffalo Nickels
Susan B Anthony Coins
Mercury Dimes
Coin counter machines
HOUSEHOLD & FURNITURE
Double Door Glass Front Hutch, 9 drawer, nice
Amana French door Refrigerator, Freezer on Bottom
Ninja Blender w/ attachments
Pots/Pans/cooking utensils
Coolers
End Tables
Containers
Lot of wall pictures, deco.
Montgomery Ward Freezer
Trash cans
Metal Cabinets
Ilgloo Coolers
Maytag Front load washer/dryer, Maxima model, HE Efficient, Ecoconserve, Commercial Tec., less than 5 yrs. old

Metal Gun Cabinet, 8 gun
Oak Gun Cabinet
Ottoman
Dresser w/ drawers
Sanyo Flatscreen Television, 48"
Solid Oak TV Stand, glass front
Brass lamp
Sewing cabinet
Recliner & Lounging chairs
Lots of small cabinets
Oak Jewelry Cabinet, w/ organizer drawers
Lots of Board Games
Bedroom Set, 4 piece
Hannspree 36" Flat Screen
Oak Table w/ chairs
Whirlpool Double Door Refrigerator
Sharp Commercial Microwave
Metal folding chairs
Lot of plastic ware
Pole Lamps
RECREATIONAL
Lancer Manufacturing, Europe 3" slate Pool table, NICE
Huge collection of fishing poles
Tackle boxes, lures, etc.
Large Tent
Motorcycle Helmets
Bicycles
Ascend Kayak
John Boat
Air Hockey Table
LAWN & GARDEN
Lawn Sweeper
Push Garden Planter
Seeder
Troy Bilt Bronco rear tine Tiller
Pruners
Lawn Mower jack
Craftsman front tine tiller
Pull type lawn sprayer
Lawn Cart
Cub Cadet Lawn Tractor, 22.0 motor, no mower deck
2 - 500-gallon poly tanks
Lawn Aerator

SHOP, TOOLS, & EQUIPMENT

Clamps
3000 lb. Winch, brand new
Transmission Stand
Flood Lights
Pry Bars
Hand Tools
Car Ramps
Chain Hoist
Come Alongs
Saw Horses
Levels
Paint Sprayers
Air Tank
Shelving
Gas Cans
Air Hose Reel
Tradesman 12" Drill Press
Table Top Planer
Ryobi Miter chop Saw
Extension Cords
Rigid Top Sander
Trickle charger
Lots of Bolt bins
Ladders
Motorcycle Jack Stand
Bosch Router Table
Craftsman 1/3 hp 10" Band Saw
Lot of Hand Wood Clamps
Jet Table Saw, X ACTA Fence Guide, like new
Jet Jointer
Ryobi Router
Jet Dust Collector
Central Pneumatic upright air compressor
Sprayer
Shop Vacs
Sand Blasting Pot
Metal Shelving
Black & Decker Saw Creepers
Homelite Chain Saw
Tow Straps
Lots of Drill Bits
MISCELLANEOUS
Galvanized aluminum wash tubs

CHECK OUR WEBSITE FOR PHOTOS AND COMPLETE LIST

Auctioneers Note: We will be moving to Callaway County and have decided to downsize and everything will go! Bill has worked in the computer industry and Ann was a nurse her whole career. Lifetime accumulation of items to be sold! Plan on spending the entire day with us. Plenty of shade trees. Thanks! Nick & Kyle

**ALLEN AUCTION & REAL ESTATE SERVICE LLC
(636) 338-4805 • Hawk Point, Mo • www.allenauction.net**

The Auctioneers, Nick Allen (636) 358-2900 • Kyle Allen (636) 236-2344 • Tec Parr (573) 239-6745 • Elden Foster (636) 661-5775

SHANNON AUCTIONS

--Auctioneers--
 • JD Shannon • Joe Shannon •
 417-349-0290 • Mountain Grove, MO • 417-926-2581

DIRECTIONS: **VANZANT, MO**—Hwy 95 South out of Mountain Grove to Hwy. W to AH Hwy., on right side of AH Hwy. Watch for Shannon Auction Signs.

SAT., JULY 31, 2021 – 9:00 AM

NEYL GRAY

PERSONAL PROPERTY / FARM EQUIPMENT



... HOUSEHOLD ...

Maytag washer/dryer set •microwave •Mason jars •red glass set •flower vases •table w/4 chairs •office chair •end tables •coffee table •sofa •recliners •entertainment center •book shelf •table •Queen size bed •dressers •kids dresser •kitchen stool •hide-a-bed love seat •school teacher desk •Denver mattress(adjustable head & feet) King Size •Serta mattress(adjustable head & feet comfort) •patio table set



... ANTIQUES ...

Hutch •little rolltop desk •wooden baby crib



... TOOLS / LAWN EQUIPMENT

Limb saw •Troy Bilt weedeater •tool boxes •hand tools •paints •Yard Man garden tiller 5 hp dual direction power to perform •Ryobi table saw •drill press workbench •electric limb saw •aluminum truck bed tool box •John Deere lawn cart

... LAWN MOWER ...

Zero turn Toro Timecutter, SS 4225, V-twin 22.5 hp, 42" deck



•TRACTORS/FARM EQUIPMENT

LS3200 Hydro 4x4 Kubota tractor, 139 hrs. w/ bucket •L4600 Kubota tractor, 295 hrs., 4x4 w/ bucket •2017 Delta 16'x6' stock trailer, like new •welding trailer •3-pt Land Pride Bush hog RC 2072 •3-pt hydraulic post driver •3-pt bale spike •Kimco side x side (part machine only) motor needs work



... BOAT ...

Lowe 17 ft 1983 model, 2 depth finder monitors, trolling motor, Evinrude 50 hp, 3 live wells



AUCTIONEER'S NOTE: Neyl has sold the house and farm and is down sizing. Everything is kept nice and clean. There will be more items added as we get into moving things. Come join us for a great auction. *Thanks. JD*

TERMS: Cash or approved check. **Conditions:** I.D. required to register, items sold as is, no warranty. Nothing loaded or removed until paid for in full. Auctioneer reserves the right to reject the bid of anyone who is not a registered bidder. Announcements made day of sale take precedence over any printed material. Auction service, employees, and/or owners are not responsible for accidents. Concessions and Porta-potty available.

YOUR Real Estate Auction Specialist



Bob Kollmeier CAI, CAGA
Auctions/Appraisals/
Real Estate • 417-882-5664



**JOE L. BURNEY TRUST • ALL BRICK HOME ON 112 ACRES M/L
HISTORIC WEBSTER COUNTY FARM, BOBCAT SKID STEER, BACKHOE,
TRACTORS, MACHINERY & TRAILER, SHOP & HAND TOOLS, HAY BALES,
FURNITURE, ANTIQUES & COLLECTIBLES**

▶▶▶ REAL ESTATE & PERSONAL PROPERTY AUCTION

SATURDAY, JULY 24, 10:00 AM

4792 TURNBO RD., MARSHFIELD, MO

**DIRECTIONS: FROM DOWNTOWN MARSHFIELD, MO GO SOUTH ON HWY A TO COMMERCE RD. THEN WEST ON
COMMERCE RD TO TURNBO RD THEN LEFT OR SOUTH ON TURNBO TO AUCTION. WATCH FOR SIGNS!**



FOR MORE INFO VISIT BOBKAUCTIONS.COM OR AUCTIONZIP.COM

AUCTIONEER'S NOTE: Don't miss this opportunity to buy this historic farm in Webster County just South of Marshfield, MO! Real Estate sells 1st at 10AM sharp followed by skid steer, tractors, shop & hand tools, household & misc. This property is part of the Historic Casa Loma Farms purchased by the Burney family in 1961! SEE HISTORY DOCUMENT ON WEBSITE.



SL-0000426478

Bob Kollmeier
AUCTIONS
APPRAISALS & REAL ESTATE
417.882.5664



RICHARD JEAN
AUCTIONEER
417.299.8401



RUSS SMITH
AUCTIONEER/SET UP MANAGER
417.844.0205

ANNUAL JULY CONSIGNMENT AUCTION

SATURDAY, JULY 31, 2021 AT 9 AM
WHEELER AUCTIONS LOT, 23101 HWY. 24, PARIS, MO



Wheeler 
AUCTIONS & REAL ESTATE

**2000+ PIECES
OF MACHINERY**

23101 HWY. 24, PARIS, MO 65275 | 660-327-5890
WWW.WHEELERAUCTIONS.COM

RECEIVING MACHINERY DAILY STARTING:
Monday, July 12 until Thursday, July 29 at 12 Noon
8 A.M. - 5 P.M. (M-F) | 9 A.M. - 3 P.M. (Sat. & Sun.)



Live Online Bidding Powered By: **proxibid**

LARRY DRENON AUCTION

ABSOLUTE AUCTION

TRUMAN LAKE HOME - Setting on 4+ Acres
14236 STRAWBERRY LANE WARSAW, MO

As I am moving, I will sell the following at auction located from Warsaw, go north on Hwy 65 approx. 5 miles to T Blacktop, then on T approx. 6 miles to TT Blacktop, then 1 mile on TT to Macks Camp Ave, turn left (south) on Macks Camp Ave, then 2 miles to Strawberry Lane on:

SATURDAY, JULY 31ST STARTING AT 10 AM



HOME ON 4+ ACRES

Sells absolute! At 11 am

3 bd, 2 ba Home with full walk-out basement and setting on 4+ acres within minutes of Truman Lake access, and downtown Warsaw! Home is neat, clean, and well-maintained, and updated with an energy-efficient metal roof. There is a nice covered porch on the front, and spacious decks on the side and back give a good view of nature and wildlife.

The kitchen offers nice oak cabinets, stainless steel front dishwasher, and large windows to let in the light. Lots of places for vehicles and toys here: One car basement garage, 2 car detached garage/shop, and an equipment shed with a sliding door.

Terms: This home sells **ABSOLUTE** to the highest bidder with no reserve! Buyer will pay 20% down day of sale, which goes in escrow at the title company until day of closing when the balance plus applicable closing costs are due. Taxes to be prorated. Seller to furnish title insurance. Call auctioneer for information or to view!

VERY NICE HOUSEHOLD Double reclining rocker/recliner with middle console, lite brown, like new ~ Fancy metal coffee table, 2 matching end tables ~ Cherry Queen Anne style dining table, leaf, 4 red upholstery seat chairs ~ Cherry cabinet style curio cabinet ~ Nice Queen size bed, dresser, chest, like new ~ Nice Queen size bed, night stand, dresser ~ Queen size Intex air bed ~ GE Smooth top stove, black and chrome ~ Whirlpool SxS refrigerator, white ~ GE microwave ~ GE washer and dryer ~ Sanyo 39" tv ~ Sentinel 8 gun cabinet ~ Lot of nice decor items ~ CD/radio/Turtable with nostalgic type cabinet ~ Small kitchen appliances ~ Tupperware, Pyrex, Granite roasters, Bakeware, general line kitchen items ~ Gold trim Corelle dishes ~ Ceramic cow collection ~ Mounted crappie

fish display ~ Hand carved woodpecker décor **LAWN, GARDEN, PATIO** Round patio table, 4 chairs, nice ~ New Craftsman weed trimmer ~ New Craftsman leaf blower ~ 2- 8' Yard Windmills ~ 25 Gal sprayer ~ Wheeled garden seat ~ Ryobi Rototiller ~ Char Griller BBQ grill ~ Metal Fence posts and electric wire stakes ~ Garden tools, post hole diggers, etc **SHOP TOOLS** Pro 4000 60 gal 6 hp air compressor ~ Homak 14 drawer tool chest ~ Pneumatic and other power tools ~ Small hand tools ~ Large vise ~ Air hose on reel ~ Shop lights ~ 16' Fiberglass extension ladder ~ 6' Step ladder ~ Several kerosene heaters **FISHING** Fishing rods, reels, tackle, tackle boxes ~ Several Lead molds ~ Boat receiver hitch ~ Other items too numerous to mention

Auctioneer's Note: Everything offered on this auction is in pristine condition. This sale won't last long, so be sure to be on time. Remember this home on 4+ acres sells absolute to the highest bidder with NO reserve!

JEWELL LEDBETTER

Larry DRENON AUCTION



Larry 660-596-8515 Laramie 660-221-4386
 Lacey 660-723-1104 Cooper 660-723-2221

Office: 660-723-6188
www.DrenonAuction.com

Terms: Cash, approved check, debit/credit card (convenience fee applied). Nothing to be removed until settled for. Not responsible for any accidents. Statements made day of sale take precedence over printed material. Lunch served.

REAL ESTATE & ESTATE AUCTION

Saturday, July 31st, 2021 ~ 9:00 AM

LOCATION: 647 S Dade 223, Everton, MO; Directions: At Everton From Jct Of Hwy M & 160 Continue East On 160 Approx 1 Mile To South Dade 223 Then Go South To Sale Site (Watch For Signs)

Auction For Richard H. & The Late Yvonne M. Dodd



Will Offer 60 Acre M/L Farm That Has Been Used For Cattle Operation, Has 2 Ponds, Fenced & Cross Fenced W/Some Being New. Has Excellent Corral & Alley System. Setting On The Farm Is A 2 Story W/Basement 4 Bedroom, 2 Bath Home That Has Kitchen, Dining, Utility, Pantry Type Sewing Rooms, Also Has 12x22 Full Front Sunroom, Nice Porch W/Side Deck W/Enclosed Back Porch As Well. Basement Also Contains An In House 2 Car Garage. This Is An Outstanding Home W/Large Cedar Lined Closets, Oak Cabinet, New Dishwasher & Gas Range, But Electric Hookup Is Still Available If Want To Change To Electric Range, Has Metal Roof, Updated Windows, New Siding & Leaf Filter Gutters. Home Has Central Heat & Air, Also Has Wood Furnace & Gas Backup, 2 Water Heaters & On Well Water With Well Being Approx 600 Ft Deep. Farm Also Has Barn, 40x40 Quansit Hut, Has 12x36 Lean To Shed, 12x16 Garden Shed, 11x11 Rock Smokehouse, & An Excellent 2 Car Garage W/ Concrete & Electric. Yard Has Upright Electric Sockets Running Throughout Yard, Setting In A Nook Secluded Are. This Is A Very Clean & Outstanding Farm & Home. You Will Have Great Opportunities Here. There Are Not That Many Opportunities To Purchase Such An Outstanding Farm & Home At Auction. Please Plan To Attend Open House On Sunday, July 25, 2021 From 6:00—8:00 PM Or Call Bill At 417-214-0093 To Preview.

Terms: 10% Down Day Of Sale With Signed Contract And Balance Due In 45 Days Or When Closing Date Set By Abstract Office. Seller Has The Right To Accept Or Reject Any And All Bids. Also Offering Autos, Lg Train & Railroad Item Collection, Lg Santa Ornamental Collection, Lots Of Excellent Antique Furniture As Well As Antiques & Primitives, Some Farm Equipment, Shop & Tool Items. See Next Weeks Paper For Complete Listing.



NANCE AUCTION SERVICE

No Matter How **BIG** or small, We Do Them All!!!

Col. Bill Nance 417-214-0093

ESTATE AUCTION

Saturday, July 24th, 2021 ~ 9:00 AM

LOCATION: 1039 West AA Hwy, Oronogo, MO; "In Nashville, MO"; Directions: From Jct Of 160 & 43 Hwy Go South On 43 Hwy 8 Miles To AA Or From Joplin Go North On 43 Hwy 20 Miles To AA Then 1/2 Mile West To Sale Site (Watch For Signs)

Auction For Harold Mason



Furniture & Appliances

2 Old Child's Chairs, Prim Cabinet, Prim Table, Retro Sitting Chair, Retro Kitchen Table & Chairs, Leather Loveseat, Prim Chairs, Corner Shelf, Gable Nelson Piano, Cedar Chest On Legs, Oak Barstools, Retro Full Bed, Dresser W/Mirror, Chest Of Drawers, Retro Lamps, Jenny Lind Baby Bed, Oak Jewelry Armoire, Coffee & End Tables, Glider/Rocker, Twin Bed, Sewing Machine In Cabinet, TV Stand, Pool Table, King Bed, Upright Deep Freeze, Washing Machine, Sony Stereo, Other Items Not Listed

Antiques, Collectibles & Households

Chipper #213 Seed Separator, 1 Bottom Walk Behind Plow, Old Metal Gas Cans, Old Wood Advertising Boxes, Old Crocks & Crock Pots, Old Oil Lamps, Old Jars & Bottles, Old License Plates, Old Red Child's Wagon, Old Snow Sled, Old Toys & Games, Old Bikes, Prim Tools, Lots Of Other Small Prim Items In Barn, Linens, Old Christmas Décor, Other Holiday Décor, Small Kitchen Appliances, Pots, Pans & Dishes, Other Items

Camper, 4-Wheeler, Scooter, Golf Cart,

Tow Motor, Industrial Machinist

Machines & Tools

Tracker 24 Ft Gooseneck Travel Trailer W/Slide Out, Canopy,



Electric Jack, Sleeps 6, Honda 250 Four-Wheeler, Older Yamaha Gas Scooter, Electric Golf Cart, JD LX188 Riding Mower, Bridgeport Industrial Drill W/Digital Readout, Creaves Vertical & Horizontal Metal Mill, Werner & Swasey Metal Turn Lathe, 2 Steel Band Saws, 3 Phase Converter On Stand, Smaller Drill Press, 2 Industrial Metal Tables, Lg Lot Of Machinist Tools Of Various Kinds, Approx 4 Toolboxes Full, Micrometer Set From 0 To 6, Lincoln AC 225 Welder, Upright Air Compressor, Cement Mixer, Dual Grinder/Sander, Power Washer, Shop Vac, Yard Roller, Approx 4 Kennedy Heavy Duty Machinist Toolboxes, 1 Is A Large Roll Around, Log Chains, Some Short & Scrap Iron, Sm Mechanic Tools, Sm Electrical Tools, Long Handle Tools, Concrete Blocks, Some Bricks, Patio Furniture, Birdbath, Stainless BBQ Grill, Trash Cart, Tackle Boxes, Other Items Not Listed

Grain Bins, New Tin, Equipment & Related Items

Approx 20 Square Of New Tin, 2 Grain Bins 1 Has Antique Cone Top, 250 Gal Field Sprayer W/Boom Arms, 15 Ft Field Aerator, 10 Ft Chisel, Hydraulic 3 Pt Log Splitter, 3 Pt 5 Ft Blade, JD 4400 Combine & Massey Ferguson Combine (Both For Parts, Neither Run), Implement Wheels, Tractor Weights, Hydraulic Cylinders, Axels, Other Items Not Listed

Auctioneers Note: It Is An Honor To Be Conducting This Auction For Mr. Mason. If You Are A Machinist Or Into Machinist Tools You Do Not Want To Miss This Auction As We Have Several Excellent Tools, Furniture, Antiques, & Other Tools Are Excellent As Well. Camper Is Ready To Hook On & Go To The Lake. This Is An Auction You Do Not Want To Miss. **Sale Order: Furniture & Appliances Sell First Followed By Antiques, Collectibles & Households Then Move Directly Into Tools. At Approx Noon Will Offer Travel Trailer, 4-Wheeler, Golf Cart & Larger Items. Remainder Of Tools & Outdoor Will Finish Auction. See Ya There!!!**

Terms: Cash or check with proper ID. Now accepting most major credit cards. Nothing removed until settled for. Statements made the day of sale takes precedence over printed material. Everything sold as is where is. Not responsible for accidents. Restroom available. Concessions Provided. Check our website for upcoming auctions and for additional pictures!!



NANCE AUCTION SERVICE

No Matter How BIG or small, We Do Them All!

www.nanceauctionservice.com

Col. Bill Nance 417-214-0093

In God We Trust

Philippians 4:13

GO TO THE AUCTION • GO TO THE AUCTION • GO TO THE AUCTION • GO TO THE AUCTION • GO TO THE AUCTION •

PUBLIC AUCTION

THURSDAY, JULY 29, 2021
Evening Sale -Starting at 5:15 p.m.

Location: 700 W Fourth Street, Dixon, MO 65459

Directions: From Hwy 28 in Dixon. Turn on Hwy C (4th St) to Sale site on right.

Household

Lazy Boy Swivel Rocker Recliner,
 Green
 Glider Rocker
 Roll Away Bed
 Framed Wall Mirror
 TV Trays w/Carrier
 Sanyo 40" LED Flatscreen TV
 Sansui 27" Flatscreen TV
 25" Element Flatscreen TV
 Hand Painted Apple Bin
 LG VHS Cinemaster Player
 52" Ceiling Fan NIB
 Emerson CD/Cassette/Radio
 Minolta 35mm Camera in Case
 Sewing Basket w/Notions
 Pitcher & Bowl Set
 40" Round Table w/4 Chairs
 Sampo Cassette Player/Recorder
 Radio
 Corner Shelf
 Curio Cabinet, Glass & Wood
 Dirt Devil Shampooer
 Wire Baskets
 Hen on Nest
 Chest of Drawers, 6 Drawer
 2 Nightstands (Maple?)
 Queen Bed
 Bedroom Touch Lamp
 Quilt Hanger/Loop
 Vanity Stool
 Linens

Home Made Bar Height Table
 Old Bar Stool
 Corning Ware Cornflower Pattern
 Some Crock Pots, Various sizes
 Some Tupperware
 Lot Cookbooks
 Small Lot Silicone Bakeware
 Singer Treadle Machine in Cabinet
 Sewing Notions
 Quilting Books/Patterns
 Crochet Books/Patterns
 Framed Wall Mirror
 Lot Quilting Fabric
 Quilt Batting
 Kitchen Step Stool
 Small Oscillating Fan
 Metal Cabinet 5' Tall
 Chest Type Deep Freeze (old)
 Home & Garden Bean Pot
 Ceramic Canisters, Barn Look
 Old Desk w/Iron Legs
 End Table, Bin Style
 Garbage Disposal NIB
 20 pc. Haviland China, Bavaria
 Germany

Antiques & Collectibles

Shapleigh Wash Board
 Hand Made Quilt Tops
 Avon Cape Cod
 Lot Home Interiors "Denim Days"
 Figurines
 Low Dresser w/Mirror, Old, (mirror

frame needs repair)
 Red Pyrex Serving Dish w/Lid
 Fire King Lidded Candy Dish
 Blue Carnival Glass Bowl
 Lot Old Plates & Platters
 Teen Doll (Old)
 Quilts
 Large Lot Beanie Babies, many in
 display boxes
 3 Old Sewing Machine Drawers
 Occasional Table
 Old Time School Desk
 Rolling Racks from the Old Shoe
 Factory

Yard, Shop, & Outdoor

2 Worx Weed Trimmers, Batteries &
 Chargers
 B&D Weed Trimmer
 Bolens Weed Trimmer
 Omni 85 Kerosene Heater
 Dining Canopy
 Rough Wood Birdhouse
 Craftsman Push Mower
 JVC Car Stereo
 4 Outdoor Trash Cans
**Husqvarna Hydrostatic Riding
 Mower, 24hp B&S Intek engine,
 48" cut, new blades & battery.**

**Many more items
 too numerous to mention**

Owner: Joyce Hickey Estate

WARDEN AUCTION & MORE

(573) 336-2367 or (573) 528-0729

Ed Warden - Auctioneer

www.wardenauction.com

TERMS

Cash, Credit,
 Debit or Approved
 Check

ID Required for
 Bid Number



TERMS

Not Responsible
 For Accidents
 or Losses

Nothing Removed
 Until Settled For



GO TO THE AUCTION • GO TO THE AUCTION • GO TO THE AUCTION • GO TO THE AUCTION • GO TO THE AUCTION •

GO TO THE AUCTION • GO TO THE AUCTION • GO TO THE AUCTION • GO TO THE AUCTION • GO TO THE AUCTION •

PUBLIC AUCTION

Saturday, July 24, 2021 • Starting at: 9:30 a.m.

Location: 316 Old Route 66, St Robert, MO 65584

Directions: From I-44 take Exit 161 and turn South toward Ft Leonard Wood. Then turn West on Business Rt 44 (Old Rt 66, by the Kum & Go) Follow to the sale site on the right.

Household and Collectibles

Large Lot Coins, Indian Head Pennies,
Jefferson Nickels, Buffalo Nickels, Steel
Pennies, in Folders & Sets
LARGE Lot NASCAR Collectibles, Cars of
Several Sizes, Some Autographed
NASCAR Coke Bottles
Charter Oak Wood Stove
Lumex Sit/Stand Walker
Rowe CD Juke Box (unknown working
condition)
Futon
Carved Wooden Frog
Sofa & Love Seat
Coffee Table
Round Bar Table & 2 Stools
15 Avon Steins
Lot Avon Bottles
Lot Baseball Cards
Small Lot Zippo Items
3 NY Yankees Radio Guides from '77,'78,'79
5 Wildlife Knives, Franklyn Mint, in Cases
Lot Belt Buckles
Small Lot Jewelry, Some Sterling,
Craig, Pioneer AM/FM, 8 Track
Rogue Acoustic/Electric Guitar w/Stand
Fender Squire Telecaster Guitar
Orange Crush Amp
2 Crystal Lake Canoe Rental Signs
Old Wooden Fishing Lures
1952 Entrenching Tool
Queen Bed (no mattress) w/WIFI in
Headboard
Dresser w/2 Mirrors & Lights
Armoire
Samsung Washer & Dryer (Washer needs
seal) Blue

Mirrored Headboard
Toddler Bed
White Lingerie Chest/Shelf
Pair Bose 901 Speakers Gen2
Shop, Sporting Goods & Outdoor
'57 Scott Atwater 7.5hp Outboard Motor
Ted Williams 10 spd. Elec Trolling Motor
12' Ozark Trail Kayak ProAngler 12
17' Flat Back, Wide Body Aluminum Canoe
(Osagian)
Homemade Boat Trailer (Needs Work)
'74 Evinrude Outboard Motor (Short Shaft
4hp)
70's Era 35 Evinrude (NO title)
Minnkota 4 sp. 17# Thrust Trolling Motor
3 Pc. Wicker Style Patio Set
Fish & Game Cleaning Table NIB
2 Tube Floats NIB
Camp Kitchen (56x21x72 in box)
Coleman Stove w/2 burners & Grill
Fish Fryer • Kneeboard • Slalom Ski
3500# Champion Winch
ATV Hydraulic Jack
Pair Heavy Duty Truck Ramps
Pair Folding Ramps
Aluminum ATV type Ramps
Several Propane Bottles (20-100 gal sizes)
Western Flyer Scooter
Several Bicycles, Kids, Adult
Metal & Wood Shelving
2 Mud Sinks
Lawn Sweeper
4 Plastic Barrels (50 gal)
Approx. 10 Sheets Used Plywood 7/16"
Fish & Game Cleaning Table NIB
Sears Kerosene Heater (3500 btu)
LEM Meat Grinder #8

2 Champion Generators
Ammo Boxes
LARGE Lot Fishing Gear,
Rods, Reels, Lures, Tackle Boxes, Salt water,
and Fresh
Cross Bow, Legend SL (Horton)
Propane Heaters (Mr. Heater)
Small Swimming Pool NIB
Step Ladders 3' & 7'
Glass Patio Table w/4 Chairs
TA50 & Military Bags

Firearms

Winchester Model 1894 Lever Action Rifle
30-30WCF
Remington Model 11, 12 ga. Shotgun(Full
Choke)
CVA .50 cal Muzzle Loader Pistol
Colt Huntsman .22LR, Semi Auto Pistol
Remington Woodsmaster 742 .308 Win
(needs repair)
.303 British
6.5 Carcano

Reloading Equipment

Lock-n-Load Classic Kit NIB
Hornady 30-30, 2 Die Set NIB
2 Daisy BB Guns
Pellet Pistols
Musket Cap Gun
Auto Parts
Chevy S10 Grill
Mustang Drivers Door ('65/'66)
Small Block Ford Radiator
4 Jeep Tires & Wheels (P265 70R16)
Destination A/T

Fender for Custom Motorcycle

**Many more items too
numerous to mention**

Cindy's Lunch Bucket will have lunch available. Good Eats!

WARDEN AUCTION & MORE

(573) 336-2367 or (573) 528-0729

Ed Warden – Licensed Auctioneer/
Real Estate Salesperson

www.wardenauction.com

TERMS

Cash, Credit,
Debit or Approved
Check

ID Required for
Bid Number



TERMS

Not Responsible
For Accidents
or Losses

Nothing Removed
Until Settled For



GO TO THE AUCTION • GO TO THE AUCTION • GO TO THE AUCTION • GO TO THE AUCTION • GO TO THE AUCTION •

Absolute Land & Home AUCTION

Saturday, July 31st. * 10:00 AM

Location: 5600 Wise Hill Rd., Billings, Mo. 65610 From Jct. Hwy 60 & 14 take Hwy 14 S. ½ mi. then left on Wise Hill Rd. 1 mile to Property



140 Acres Prime Residential/Farm Land Offered in 11 tracts from 5 acres to 20 acres each.

The Property will be offered Individually, in any Combination & it's Entirety. You can buy from 5 acres up to 140 acres.

This Property is located in one of the Fastest Growing Area's in Christian County, with Gorgeous Building Sites Just east of Billings City Limits off of Hwy 14. Just minutes from Republic, Springfield, Nixa, Clever & only 30 minutes to Table Rock Lake.

Tract #1 - 20 Acres with 100+ yr. old 2100 sq ft, 2 Story Farm House that has lots of Charm & Character also has Barns, Mature Shade Trees & Nice Pond, Land is Open with new Pipe & Cable Fence & Pipe Corral with Covered Cattle Working Area, Wise Hill Frontage;

Tract #2 - 20 Acres all Open Land with Wise Hill Rd. & Private Road Frontage (Build your Hobby Farm to Suit);

Tract #3 - 5 Acres all Open with Public Road Frontage (Lots of Building Options);

Tract #4 - 5 Acres all Open with Public Road Frontage (Lots of Building Options);

Tract #5 - 10 Acres all Open with Public Road Frontage (Lots of Building Options);

Tract #6 - 20 Acres Open & Timber with Public Road Frontage (Many Beautiful Building options for your Farm);

Tract #7 - 20 Acres all Open, Public Road Stops at Property Line (Great Horse Property);

Tract #8 - 5 Acres mostly Timber with Neat Old Barn, has Private Road Frontage on 2 Sides (Lots of Beautiful Building Options);

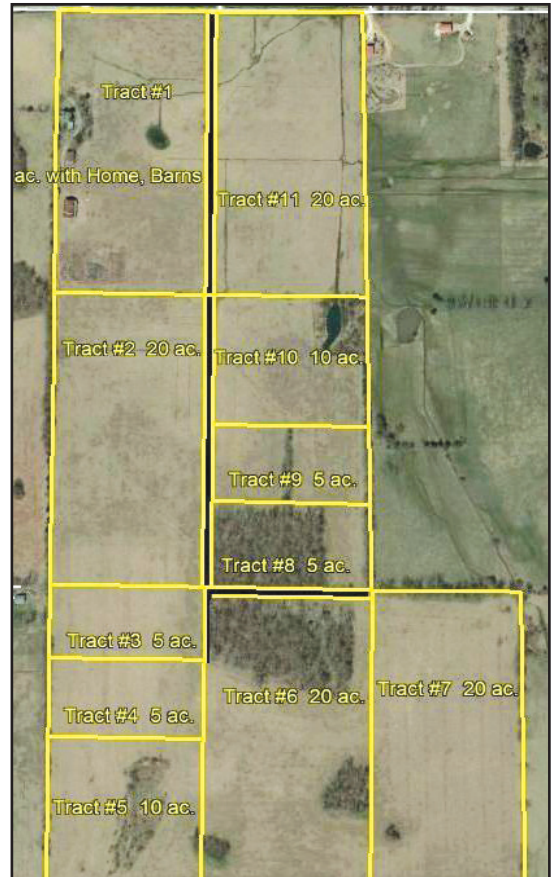
Tract #9 - 5 Acres all Open with Private Road Frontage (Level with lots of Building Options);

Tract #10 - 10 Acres all Open with Large Pond, Private Road Frontage (Extra Nice Building Site with the Large Pond);

Tract #11 - 20 Acres all Open Land with Wise Hill Rd. & Private Road Frontage (Build your Hobby Farm to Suit)

If your looking for an extra nice home site or piece of land outside of the city but with a short easy drive to work & play to build your Home or Hobby Farm then this is the property for you.

TERMS & CONDITIONS: Property sells Absolute to the Highest Bidder, Regardless of Price with Guaranteed Free & Clear Marketable Title 5% Buyer's Premium applies. Buyers-premium is an additional fee (5% of high-bid amount) paid by the high-bidder. All properties are being sold 'as is, where is' and are not subject to financing, inspections or any other contingencies. Foster Auction Service represents the seller only. The high bidder must make a 10% non-refundable deposit on sale day (cash, personal or cashier checks). Taxes will be prorated through date of closing. Balance and closing costs are due at closing 45-days or less from sale date. All parcels subject to any existing recorded easements. Locations of parcel signs, maps, and picture illustrations are for reference only. Fence lines may not follow property boundaries per survey. Agents / Brokers welcome but must register at least 24 hours prior to Auction!



OWNER: GARY MYERS



Auctioneer: Larry Foster | Galena, Mo

Phone: (417) 723-8329 Cell: (417) 839-6860

www.fosterauctionservice.com Email: bidnowsold@aol.com



See our website for pictures and more info!

PUBLIC AUCTION

9:00 A.M. * Saturday, July 24th * 9:00 A.M.

Location: 27141 Hwy 413, Galena Mo. 65633. **Directions:** From Galena at Jct. Hwy's 413 & 176 take Hwy 413 south 3 mi. to Sale. *Watch for Signs -- Breakfast & Lunch Available*



TRACTOR - UTV - IMPLEMENTS

John Deere 5205 4x4 Tractor & J.D. 522 Loader With Quick Attach Bucket Extra Clean 1 owner Tractor with only 1940 hrs.:
Quick Attach Front Bale Spike;
Quick Attach Forks;
Howse 10 ft. Brush Hog, Pull Type;
3pt. A-1 Mist Sprayer 60gal. (Like New);
3pt. Seeder/ Fertilize Spreader;
John Deere Lawn Cart;
Kubota RTV500 4x4 UTV (only 993 Hrs.);
Prowler Kids Mini Electric Go Kart (Nice but Needs Batteries);
Rand Trailblazer Mountain Bike;

CATTLE EQUIPMENT - HAY

Powder River Squeeze Chute with Palpation Gate
& 2 Panels;
Oval Stock Tank;
20 Steel Posts;
(2) 16ft. Hog Panels;
(8) Delaval Weigh Jars (Complete & Good);
(8) Good Delaval Claws;
(32+) Good Teat Cup Shells;
300 Gallon Liquid Tote/Container;
(3) 3'x4'x8' Bales Alfalfa Hay;
Live Trap;
Misc. Farm Related Items;

TOOLS - GENERATOR

Dayton 25KW PTO Generator on Trailer (Nice);
Good Cutting Torch Set with Cart & Bottles;
Lincoln 225 Amp Welder;
Chicago Elec. 90 amp Wire Welder;
Charge Air 20 gal. 5.5 hp Air Compressor;
Air Tank;
Nice 4 ft. X 4 ft. Metal Bolt/Parts Bin;

Graco Magnum XR7 Airless Paint Sprayer;
Hurricane 5hp. Elec Pressure Washer w/100ft Hose;
Misc. Hand & Electric Tools;
Shop Vac;
Lot Lawn & Garden Tools;
Lot PVC Fittings;
Misc. Lumber & Building Supplies;
Small Lot Fishing Tackle;
Fish Cooker;
Misc. Tools & Shop Related Items Not Listed;

COINS - STAMPS - JEWELRY

(20) Silver Peace Dollars;
(100) Ike Dollars;
1833 Bust Dollar;
(13) Silver Dollars;
(7) Silver Barber Quarters;
(7) Silver Quarters;
(2) Seated Dimes;
1855 Dime;
(30) V Nickels;
(10) Buffalo Nickels;
(23) Indian Head Penny's;
(180+) Wheat Penny's 1917 up;
Lot Misc. Foreign Coins & Currency;
Lot First Day Issue Stamps;
Misc. Costume Jewelry;

ANTIQUE - COLLECTIBLE

Universal Bread Making Bucket (unusual);
(3) Cast Iron Skillets;
Reading Hardware Apple Peeler;
1 Gallon Crock Jug;
10 Gallon Milk Can;
Old Metal Tricycle;
Antique Cruet Set;
Old Wood Spools;
1914 Edison B-80 Phonograph, (works good);

5 pc. Jim Beam Decanter Train Set;
White Mountain Electric Ice Cream Freezer;
(5) Ertyl Die Cast Trucks (NIB);
Lot Nice Vintage Cup & Saucer Sets;
ConAgra Foods Advertising Dinner Plates;
Old Metal Doll Bed;
Few Older Dolls;
Lots of Misc. Collectibles not Listed;

FURNITURE - MISC.

Antique Oak Mission Style Arm Chair;
Antique Wood Rocker;
Black Forest Bavarian Mid Century Coffee Table & tiered End Tables;
Nice Hamilton Drafting Table;
(2) Old Wood Ice Cream Style Chairs;
Nice Wood Porch Glider;
(2) Wood Porch Benches/Planters;
48" Glass Showcase w/light & lock;
Ornate Metal Patie Table & 2 Chairs;
Ornate Metal Plant Stand;
Decorative Fire Pit;
High End Wood Adjustable Closet Shelf Organizer
System 10 Uprights, 20 Shelves, Hardware, etc...;
Metal Master Commercial 9ft. Stainless Steel 3 (18" x 24") Sink Food Service Sink/Table;
48" Stainless Table on wheels;
Metal Grease Trap;
Misc. Nice Pictures & Deco Items;
Electric Stone Wheel Grinder for Grain;
(13) unopened 1 Gallon Cans Whole Grain Wheat;
Games & Puzzles;
Lots & Lots not Listed;



OWNER: BRUCE & DEBBIE SALISBURY

Auctioneers Note: The Salisburys have sold their farm! Extra Clean Tractor, Machinery, Cattle Equipment, Antiques & Lots Lots More!
See our website: fosterauctionservice.com for a full list & 100's of pictures

See our website for pictures and more info!

Auctioneer: Larry Foster Galena, Mo

Phone: (417) 723-8329 Cell: (417) 839-6860

www.fosterauctionservice.com Email: bidnowsold@aol.com



LIVING ESTATE AUCTION FLEMINGTON, MO **AUCTION**

As I am moving we will sell the following Real Estate, Automobile, Household, Collectibles, Tools and Misc. At the Home Located on O hwy. In Flemington, Mo. On

Sat. July 31, 2021 at 9:00 am

WATCH FOR AUCTION COMPANY SIGNS • LUNCH SERVED

FOR MORE PICTURES GO TO: WWW.BRUCEANDLEANAUCTION.COM



REAL ESTATE

Selling 9 acre's M/L of open ground with a 3 Bedroom, 2 Bath, Modern Home of approx. 1766 Sq. Ft. Home has Dining Room/Kitchen Combination W/ Built in Dishwasher & Electric Range, Living Room with a Brick Fireplace W/Buck Wood Stove Insert, Master Bedroom has attached Bathroom, Lrg. Utility/Mudroom, Home has a Heat Pump & Central Air, Vinyl Siding, Covered Back Porch/Patio, City Sewer, with a Private Well, City Water is Available. Real Estate has a 20' X 30' Insulated Garage/Shop Combination, a Two Car 30' X 75' Garage/Shop Combination & a Older Small Barn. Real Estate has two Asphalt Driveway Entrances, lots of Shade, Home is in good repair and ready to move in. Real Estate sells at 12: noon with owner confirmation. Come prepared to buy as Family is motivated to sell. For more info contact Auction Co.



AUTOMOBILE

- 2004 One Owner Mercury Grand Marquis GS, 4 Door, 4.6 V-8, Automatic Transmission, 72,634 Miles, PW, PL (nice car)

HOUSEHOLD & COLLECTIBLES CONT.

- Stainless Ware
- Kitchen-Aid Mixer
- Sm. Electric App.
- Lot of Pots, Pans and Dishes
- Microwave
- Lot of Misc. Glassware
- Fender Squier Guitar W/Case
- 2-Fiddles W/Case
- Vantage Mandolin W/Case
- Sm. Kimball Electric Organ
- 5 Western Hats
- Misc. Mens Clothing
- Towels & Linens

HOUSEHOLD & COLLECTIBLES

- Frigidaire Double Door-ed Refrigerator/Freezer
- Frigidaire Refrigerator
- Maytag Automatic Washer & Electric Dryer
- Dining Table W/6 Chairs
- 6' Glass Fronted Hutch
- 5' Glass Fronted Hutch
- 3 Bar Stools
- 2 Cushion Hid-a-bed
- 3 Cushion Hid-a-bed
- Occasional Chairs
- 3 Pc. Queen Size Bedroom set W/Mattress
- Full Bed
- Office/Computer Desk
- Cabinet Sewing Machine
- Drop Front Desk
- Fourier Table
- Wood Box
- 2-5' Metal 2 Door Cabinets (nice)
- Lee Bumgardner Handmade Grand Father Clock
- 6' Ant. Glass Fronted Secretary Desk W/Beveled Mirrors
- Oak Stand Table W/Large Glass Claw Feet
- Marble Top Walnut Stand Table
- 12 Gallon Western Stone Jar
- 6 Gallon Western stone Jar
- 2-3 Gallon Stone Jugs
- Stone Bowls
- Cast Twin Hog Oiler
- Metal Twin Glider
- Green Aladdin Lamp
- Kerosene Lamps
- Open Wash Stand W/Bowl
- Oak Spindle Back Rocker
- Galv. Tubs & Buckets
- Several old Primitives
- Ballerina Dishes
- Churchill Willow Dishes
- Refrigerator Dishes
- Set of China
- 2 Door Cedar Cabinet

TOOLS & MISC.

- Craftsman Table Saw W/Mounted 4" Planner
- Craftsman Floor Model Drill Press
- Craftsman 12' Floor Model Band Saw
- Craftsman Metal Work Bench
- Craftsman Socket Set & Tools
- Craftsman Bench Grinder
- Misc. Hand Power Tools
- 1/4" Socket Set (like new)
- Wooden & Alum Ext. Ladders
- Misc. Hand & Garden Tools
- Chain Hoist
- 3 HP Pump
- Creeper
- Shop Vacc.
- Wooden 4 Drawer Tool Box
- Sm. Homelite EZ Chain Saw
- Leather Hand Working Tools
- Lrg. Wooden Tool Box
- Lrg. Wheel Garden Cart
- 2 Push Mowers
- Gas Grill
- 20 Gallon Kerosene
- New Buddy Propane Heater
- 4 Rolls New 4pt. Barbwire
- Roll of 2" X 4" X 36" Wire
- Approx. 50 New 6" Steel Post
- Bundle Fence Staves
- 3-14" Pipe 6 Bar Gates
- 12' Rollup Harrow



TOOLS & MISC. CONT.

- 5 Homade Feed Troughs
- 12' X 20' Chain Link Dog Pen
- Dog House
- 2 Kero-sun Heaters
- 2 Garden Hoses
- Garden Pumps
- Propane Bottles
- 5 Pc. Cast Metal Patio Set
- Cord of Seasoned Firewood
- Pipe Firewood Racks
- 18pc 1 1/2" Plastic Pipe 10'
- Wheel Chair
- Pride Electric Scooter Chair (needs battery)
- One Lot of Misc.

AUCTIONEERS NOTE:

Here is a very good opportunity to buy a very nice piece of Real Estate. Home that is ready to move in on 9 acres of improved open land with several improvements. One owner clean Car, and very nice and clean personal property to sell at this Auction. Real Estate Terms: 10% down day of sale Bal. upon closing, Real Estate sells at 12:00 noon

OWNER MRS. NORMA A. PITTS

TERMS: Everything sells as is, where is. Nothing is to be removed until settled for. Payment of Cash, Check with Proper ID, or Credit Cards. Auction Company or the Owners will not be responsible for loss of items or accidents. Statements made the Day of the Auction take Precedence over Printed Matter.

SALE CONDUCTED BY **BRUCE & Le'AN AUCTION & APPRAISAL, LLC**
THE AUCTION COMPANY THAT APPRECIATES YOUR BUSINESS

For more information and pictures go to our website at www.bruceandleanauction.com

RONNIE BRUCE - Fair Play, MO
417-777-1685 or 417-654-2214
colonbruce@gmail.com

BRANDON BRUCE
Fair Play, MO

BILLY BRUCE - Stockton, MO
417-399-4800
colbbruce@gmail.com

PUBLIC AUCTION

SATURDAY, JULY 24 @ 9:00 A.M.

Directions: 1262 Hwy. K, SALEM

From Salem take Hwy. 19 south 4 miles to K Hwy. Take K Hwy. 2 miles to sale on right. Watch for signs.

GUNS - HOUSEHOLD - TOOLS - LAWN - MISC. ITEMS

Winchester Model 1300 Defender
 Marlin Model 338W 30-30
 Ammo for All Guns
 Smith & Wesson Model M&P15-22
 22LR w/25 Round Clip - Cleaning Equipment
 Bore Sighters - Winchester Model 190 22 Auto.
 Box of 38 Special 158 Gram
 Armoire - Entertainment Stand
 Glider/Rocker w/Glider Footstool
 Big Air Compressor - Plastic Ramps
 Lawnmower Lift - Generator - Wagon Wheels
 Table Saw - Chop Saw - Drill Press
 Old Power Tools - Tools
 Queen Size Wood Bed Frame
 Washer - Stool - Toolbox - Loveseat, Vintage
 Papasan Chair - 2 Chests - Coffee Table
 2 Accent Tables - Aquarium - Shelves - Windows
 Antique Heater - Icecream Chairs - Picnic Table
 Swing - Glider Lawn Bench - Metal Lawn Chairs
 Sprayer - Gun Display Cabinet - 4 Rifles - Ammo
 Knives - Dog Crates - Rocking Chairs
 Antique Rocking Chair
 Wood Horse/Carpenter Horses
 Old Plow - Shelves - Cabinets - TV/VCR/DVD
 Small Fridge - Dresser - Cabinet Desk
 Treadmill - Standing Rolling Hair Dryer

Men's Coveralls - Men's Cartwright Coats
 Remote Control Boat & Helicopter
 Glidersizer Exercizer - Powerlift Recliner
 2 Wheelchairs - Fireplace - New Window AC Unit
 Old Doors - Exmark Zero-Turn in Grass Catcher
 2004 Dodge Durango 4x4 SLT 3rd Row, Loads,
 200,000 Approx. Miles
 John Deere Riding Mower - 3 Weedeaters
 2 Push Mowers - Antique Water Pump
 Air Brush Stuff - Pull-Behind DR Lawn Rake
 Pull-Behind DR Weighted Drum
 Outdoor Wood Rocking Chairs - Dining Table
 Dining Chairs - Coolers - Tent
 Saddle & Stand - Horse Tack - Edger
 Trimmer - Fold-Up Chairs
 Wood Dog Bed - Targets - Ladders
 Barrels - Deer Feeder
 Flag Pole - Queen Headboard Brown
 Wicker Twin Headboard
 2 Antique Metal Twin Bed Boards
 Wicker Shelf Table - Fishing Poles
 Fishing Tackle - Desk
 Antique End Tables - Galvanized Tub
 2 Night Stand - Hydraulic Jack
 Jack Stands
 Air Compressor w/Extension Hose

Vacuums - Buffers - Electrical Plugs
 Stereo - Microwave - Aluminum Roll
 Helmets - Oil, Etc. - Gas Cans
 Pool Pump Tank
 Wagon - Filing Cabinets Small/Large
 Pictures - Dollie - Wood - Rolling Cabinet
 Car Manuals - Motorcycle Gear - Lamps
 Books - Tractor Seat - Antique Levels - Yolks
 Hame - Shutters - Hardware for Doors
 Circular Saw - Wheelchair Ramp
 Freezer - Metal Drawers - Cement

AUCTIONEERS NOTE: Very Nice Clean Sale.
See you there! - Tom



ANNOUNCEMENTS AT AUCTION TAKE PRECEDENCE OVER PRINTED MATTER

WULFF AUCTION

Auctioneers:

Col. Tom Wulff - Col. David Wulff
498 Hwy. B, Salem, MO 65560
573-729-8476

Clerk: Tracy Strange Cashier: Nancy Inman

See Wulff Auctions at www.thesalemnewsonline.com/auctions

TERMS: CASH OR
APPROVED CHECK -
I.D. REQUIRED
NOTHING REMOVED
UNTIL SETTLED FOR

Licensed
Appraisals



RAIN OR SHINE
OWNER & AUCTION
PERSONNEL NOT
RESPONSIBLE FOR
ACCIDENTS AT
SALE SITE

VISIT WEBSITE FOR PICTURES

OUTSTANDING GUN & AMMO AUCTION

FRIDAY, JULY 23RD - 6:00 P.M.

Location: YMCA in Mountain Grove, 1 YMCA Drive Mtn. Grove, MO
Directions: From 4-Way Stop go North on Main Street prox m1/2 mile to 9th Street. Turn right on 9th Street prox 1/4 mile to Auction on right. **WATCH FOR CHADWELL AUCTION SIGNS.**
Payment System: Cash • Debit Card • Credit Card (Debit / Credit Card Fee Will Apply) Checks approved if known by auction company. **VISIT: WWW.CHADWELLAUCTIONS.COM**

GUNS ~ ONE OWNER SELL OUT

Savage Axis 22-250 Heavy Barrel Accu Trigger w/4x12x40 Bushnell Scope (unfired) • TC Compass 204 Ruger w/Athelon 4x16x40 Scope • Marlin Model XTF 270 Winchester w/Simmons 3x9x40 Scope • Savage Model 110 6.5 PRC w/Leupold 3.5x10x40 Scope • CVA Hunter



44mag w/Leupold 3.5x10x40 Scope • Mossberg 500 12 gauge w/Turkey Choke • Savage Model II "hog hunter" 308 Winchester w/Athelon 6x18x44 Scope • Savage A-22 Semi Auto Rifle w/Konus Pro 6x24x40 Scope (unfired) • Howa 1500 Chassis Rifle 6.5 Creedmore w/Athelon 6x18x44 Scope • Ruger Precision .17 HMP w/Bushnell 3x9x40 Scope • Winchester XPR 243 Winchester w/Athelon 6x18x44 Scope (unfired) • Ruger Model 77 22 Rimfire (grade mountain match, grade fluted barrel) w/Athelon 4x12x44 Scope • Ruger American Predator Go Wild Camo 350 Legend w/Konus 3x9x40 Scope (unfired) • Diamondback 5.56 NATO w/Sig Saur 3x9x40 Scope • Marlin Model 822 22 Mag w/Tasco 3x9x40 Scope • British Enfield #5 Mark I Jungle Carbine 303 British (very rare) • Savage Axis 30-06 Spr w/4x12x40 Vortec Scope • CVA Scout 6.5 Creedmore w/Konus Pro 6x24x44 Scope • Mauser 257 Roberts Tru-Glo w/4x12x44 Scope • Winchester Model 94 Ranger 30-30 Winchester w/Athelon 6x18x44 Scope • IWI Jericho 941 Baby Desert Eagle 45 cal. • Ruger Model 77 .223 Stainless w/Vortex Crossfire 4x12x44 Scope • Rock Island

Revolver 38 Special Snub Nose Stainless • Ruger Wrangler 22 Rimfire

AMMO

12 gauge • 308 Win • 6.5 Creedmore • 6.5 PRC • 22 Mag • 17 HMR • Approx 3000 rounds of 22LR Rimfire • 6.5x55 Swede • 243 Win • 204 Ruger • 5.56 NATO • 223 Rem • 44 Mag • 303 British • 30-30 Win • 350 Legends • 7.62x39 • 30-06 Springfield • 9mm • 15 boxes of 50 round, CCI 22 LR, 40 grain • 10 boxes of Winchester 12 ga., 2 3/4 inch, 1 1/8 oz, 7 1/2 shot • 3 boxes of Federal Upland steel, 20 ga., 2 3/4 inch, number 6 shot • 2 boxes of Winchester 20 ga., 2 3/4 inch, number 8 shot • Lot of Reloading Components including Primers, Bullets, Reloading Press, Powder Measure, Brass, & etc. • Other



CONSIGNMENT GUNS

Porter & Hale 7mag Bolt Action w/ Leupold Scope • Stoeger double barrel 12 ga. (coach gun) • Beretta 686 onyx over and under 20 ga. (made in Italy) • Browning 12 ga. double automatic (made in Belgium) • Browning 2000 20 ga. • IWI Uzi tactical 22 cal w/ folding stock • AR 15 w/ binary trigger & Nikon scope • AR 15-223 Rem 11-87 20 gauge NIB • Winchester Model 42 410 • Stoeger 12 ga. Over/Under • Browning 22 cal. BLR 22 • Rossi 20 ga. Single Shot • Winchester 12 ga. 1400 • Centme .308 cal Sporter • Ruger 22 cal. Custom 10/22 Target from Ruger Custom Shop • Swiss .41 cal. Bolt Action • Marlin 12 ga. Pump • Winchester 12 ga. Model 12 Pump • Husqvarna .270 Lightweight Carbine w/Custom Stock • Smith & Wesson 20 ga. Model 1000 Full Choke • Smith & Wesson 20 ga. Model 1000 Improved Cylinder • Remington Mohawk-48 20 ga. • Stevens Model 320 12 ga. NIB • Hi Point Model C9 9mm NIB • Sears Model 41 22LR Single Shot • Savage Model 93 .22cal WMR Bolt Action Bull Barrel w/Bushnell Scope • Savage Axis 6.5 Creedmore Accu Trigger w/3x9 Scope (NIB) • Hatfield 12 ga. Semi Auto (NIB) • Ruger Wrangler 22 LR Revolver (NIB) • Ruger .223 Mini 14 w/2 Magazines, Wood Stock, & Scope • Other

AUCTIONEER'S NOTE: This will be a one owner sell out with consignments as well. We are taking consignments up until sale time. **Thanks, Shawn**

DRIVER'S LICENSE OR PICTURE I.D. REQUIRED • TERMS: CASH OR APPROVED CHECK **OR**

Chadwell
 Auction Service, LLC
www.chadwellauctions.com

Auctioneer:
 SHAWN CHADWELL
 417-830-0209
Ringmen:
 Weston Chadwell ~ 417-349-0727

Clerk:
 SHELLY CHADWELL
 Cell: 417-880-8449
Cashiers:
 Shawn Irby • Marla Chadwell
 Kati Roberts • Emily Chadwell

PROFESSIONAL SALES MANAGEMENT
 LUNCH WAGON • APPRAISAL SERVICE • RAIN OR SHINE
 All announcements made day of sale take precedence over any printed matter.
 Not responsible for lost or stolen merchandise. Not responsible for accidents.

#1 AUCTION SOURCE IN CENTRAL MISSOURI

SERVING 33 COUNTIES!

A collage of various items related to the auction business. It includes a cover of 'WEEKLY TRADER MAGAZINE' from February 4, 2021, featuring an advertisement for 'ATTENTION WOOD TURNERS!' and 'The Dale and Shari Robbins Collection'. Another cover shows an 'ONLINE ONLY EQUIPMENT AUCTION' for Thursday, February 25, 2021. There are also advertisements for 'MACHINERY & FARM EQUIPMENT CONSIGNMENT AUCTION' on Saturday, May 1, 2021, and 'DENMAR PROPERTIES AUCTION' for March 26th, 2021. A red circular graphic in the foreground says 'IN PRINT & ONLINE!'.

TO ADVERTISE YOUR AUCTION, CALL 417-532-9131

WEEKLY TRADER MAGAZINE

100 E. Commercial, Lebanon
 www.myweeklytrader.com
 www.facebook.com/myweeklytrader

BUFFALO LIVESTOCK MARKET LLC



276 Hwy 32 West
Buffalo, Missouri
July 17th, 2021

Receipts: 1113 Head

Feeders Steady. Cows \$3-\$5 Lower.
Bulls \$2 Higher.

REPRESENTATIVE STEERS

300-400 @ 165.00 to 198.00
400-500 @ 165.00 to 186.50
500-600 @ 162.00 to 178.50
600-700 @ 152.00 to 168.00
700-800 @ 140.00 to 156.50

REPRESENTATIVE HEIFERS

300-400 @ 150.00 to 166.00
400-500 @ 145.00 to 164.00
500-600 @ 141.00 to 163.00
600-700 @ 134.00 to 143.00
700-800 @ 122.00 to 137.00

FEEDER BULLS

400-500 @ 160.00 to 178.00
500-600 @ 145.00 to 160.00
600-700 @ 114.00 to 145.00
700-800 @ 112.00 to 134.00
800-900 @ 88.00 to 116.00

BRED COWS

Young \$1,025.00 to \$1,200.00
per head

COW & CALVES

Young \$1,225.00 to \$1,290.00
per head

WEIGHT COWS

High Dressing Big Carcass
72.00 to 77.50
Boning Med Flesh 60.00 to 71.00
Thin Low Dress Cows 59 Down

WEIGHT BULLS

High Dressing 2 Individual
114.00 to 116.00 Top
Med Dressing 90.00 to 104.00
Low Dressing Thin Bulls 74.00 to 85.00

MON-WED MARKET REPORT

Listen to KJEL 103.7FM • Lebanon or KYOO 99FM • Bolivar

VIEW OUR SALES AT CATTLEUSA.COM

CALL FOR TRUCKING OR ON-FARM VISIT

Lyle Caselman • Owner-Manager
417-345-7876 • mobile 417-533-2944
Leon Caselman • Owner
417-345-4514 • mobile • 417-588-6185

CHEST SIZE FREEZER: Full of meat.
\$175 meat only. 573-327-9068. Desloge.

WOULD YOU LIKE A CATUS PLANT?:
Blooms beautiful yellow flowers in the
spring. Free. 417-457-1023.

**Where it's always
a bull market!**

Angus - Brangus - Ultrablacks

WALL STREET CATTLE CO.

14603 HIGHWAY KK, LEBANON, MO
417.288.4444 • WALLSTREETCATTLE.COM

**PAYING CASH FOR VINTAGE
WHISKEY, BOURBON, RYE, SCOTCH,
ETC.:** Only full and sealed collections from
old bars, estates, liquor stores, etc. Call or
text 217-440-5752. St. James.

**LAKE OF THE OZARKS – SUMMER
FUN:** Lots starting at ~~\$3,950~~, \$79 down -
\$79 per month. Beautiful Wooded Lots, short
distance to the Lake. Free lake access and
boat ramps. Immediate possession, own for
investment, owner financing. Also Camping
lots and Acreage tracts available. Prices good
through August 2nd, Hwy 135 South out of
Stover, MO. Take Lake Road 135-12 to the
Ivy Bend Office. **Open Friday, Saturday,
Sunday, call (573-372-6493) other days by
appointment only.** Iveybendlandoffice.com

**Pine Lumber
For Sale**

2x4x8'	\$4.50
2x4x12'	\$6.50
2x6x8'	\$6.00
2x6x12'	\$9.00

**Call 417-247-7761
or 417-247-7100**

**YOU OWN YOUR OWN HOME, why
wouldn't you want to own your electric?
GO SOLAR! Call 417-955-0062. Bolivar.**

250 CANNED GOODS OF ALL KINDS:
\$150 for all. 573-327-9068. Desloge.

Special Tack Sale

**Sunday,
July 25
1:00PM**

**Summersville
Livestock Auction**
245 2nd St. • Summersville, MO
417-247-8051

PINE LUMBER FOR SALE: 2x4x8'
\$4.50, 2x4x12' \$6.50, 2x6x8' \$6.00, 2x6x12'
\$9.00. Call 417-247-7761 and 417-247-7100.
Summersville.

175 ORIGINAL VCR MOVIES: \$1.00
each for make offer. 573-327-9068. Desloge.

4 TIRES GOODYEAR WRANGLER:
265-65-R18. 618-806-1217. Lebanon.

**SMALL SQUARE BALES OF ALFAFLA
HAY FOR SALE:** 417-718-8584. Conway.

**THE HEART OF THE SPRING BOOK. A
Bennett Spring Novel by Laura L. Valenti,
161 pages. \$6.50. 417-532-2045. (Leave
message and phone number). Lebanon.**

**MID
MISSOURI
STOCKYARDS**

**REGULAR SALE EVERY
THURSDAY 11AM**

SPECIAL COW SALE • AUGUST 14TH • 6 P.M.

For Farm Visits, Market Updates, or Trucking
Call **Zach Cox 417-777-1320**
Dan Romine 573-578-4939

**Competitive Buyers!
Competitive Commission!
Competitive Market!**

Barn: 417-532-9292

I-44 • Exit 123 "just outside of Lebanon"
17505 Route 66, Phillipsburg, MO 65722

For weekly market updates, visit us at
www.midmostockyards.com

NEW PISTOLS IN STOCK: Go to roll-ingmead.com Located near Marshfield. 417-241-1523.

FOR SALE: 2 New Holland 851 balers. Field ready. 573-422-3945. Meta.

2017 BUICK LACROSSE PREMIUM: 17,000 miles, warranty, \$31,000 negotiable. 417-718-0014. Lebanon.

MUSCOVY DUCKS: Adults & young. 660-337-6666. Fortuna.

JOHN DEERE 4230 DIESEL TRACTOR: Cab & cold air, 100 hp. \$13,500. 573-765-4406. Richland.

IHC 430 SQUARE BALER: \$1,500. 573-765-4406. Richland.

Kilmer Farm Equipment
CONSIGNMENT AUCTION
SATURDAY, AUG. 28 • 10 AM
 14769 Cattle Lane
 Versailles, MO 65084
Directions: At the Intersection of Hwy 5 and Hwy 52 in Versailles, go North on Hwy 5 for 1 mile to Cattle Ln then turn Right or East and go 3/4 mile to Sale Site.

AD DEADLINE: MONDAY, AUGUST 9, 2021
Accepting Consignments On Lot
Saturday, August 14
Wednesday, August 25

CONTACT DANIEL OR MARK KILMER TO CONSIGN OR FOR MORE INFORMATION (573) 378-6615

TRACTORS, PLANTERS AND SPRAYERS, CONSTRUCTION EQUIPMENT, TRUCKS AND TRAILERS, GRAIN CARTS AND WAGONS, MANURE SPREADERS, CUTTERS, TILLAGE, COMBINE AND HEADS, FEED MIXERS, MISC. EQUIPMENT, HAY EQUIPMENT, SILAGE EQUIPMENT

Wheeler AUCTIONS & REAL ESTATE
 23101 HWY. 24, PARIS, MO 65275 | 660-327-5890
WWW.WHEELERAUCTIONS.COM

For more info and photos:
www.wheelerauctions.com

KILMER FARM EQUIPMENT, LLC
 14270 Hwy. 52, Versailles, MO 65084
(573) 378-6615



VEHICLES | HOT TUB | APPLIANCES TOOLS SOMETHING FOR EVERYONE!!

4100 Savannah Ct., Columbia, MO
Bidding Ends: Tuesday, July 27th at 12:30PM
Bid Online At Atterberrysells.com

Preview: Monday, July 26th, 4:00 PM to 6:00 PM
Payment & Pick-Up: Wednesday, July 28th, By Appointment

Preview The Entire Auction at www.atterberrysells.com



Seller: Michael Harris Estate

Check It Out & Bid At www.AtterberrySells.com
 For Additional Information Or Terms, Call Your Real Estate At Auction Specialists: Atterberry Real Estate Auctioneers 573-474-9295

 **ATTERBERRY** AUCTION & REALTY COMPANY
 www.AtterberrySells.com 573-474-9295


WILLYS JEEP, TRACTORS, BUSH HOG
Online Estate Auction

1946 Willys Jeep | Allis-Chalmers Tractors | Bush Hog – Hydraulic & Other Implements | Ariens Zero Turn Mower | 12' Doolittle Utility Trailer W/ Ramp Gate | 1953 Dodge Flatbed Truck | Sawmill | Arrowheads | Name Brand Woodworking & Hand Tools | Handcrafted Furniture by Mr. Holliday & Much, Much More

23958 Big Lick Road, Boonville, MO
Bidding Ends: Wednesday, July 28th at 12:30PM
Bid Online At Atterberrysells.com

Preview: Tuesday, July 27th 4:00 PM to 6:00 PM
Payment & Pick-Up: Thursday, July 29th by appointment only



Seller: Charles W. Holliday Estate

Check It Out & Bid At www.AtterberrySells.com
 For Additional Information Or Terms, Call Your Real Estate At Auction Specialists: Atterberry Real Estate Auctioneers 573-474-9295

 **ATTERBERRY** AUCTION & REALTY COMPANY
 www.AtterberrySells.com 573-474-9295


SWISHER COMMERCIAL PRO 52" ROUGH CUT ATV TRAIL CUTTER: 14.5 HP Kawasaki motor. Rated for up to 3" material. Like new, \$3,450. 417-270-1505. West Plains.

10' LANDPRIDE RCF3010 BRUSH HOG: \$5,500. 417-270-1505. West Plains.

REGISTERED BORDER COLLIE PUPPIES: For sale, black & white, short haired, shots & wormed. 573-739-9431. Licking.

BLUE HEELER PUPPIES: For sale, out of good working stock. 417-664-5926. Niangua.

FOR SALE: 2007 Adirondack RV with slide-out. \$11,000. Would consider trade for building lot in the Ozarks. 417-766-3997. Springfield.

CADALLAC ESCLADE SUV: Black 2006, new tires, \$4,900. 573-636-8000. Jefferson City.

JOHN DEERE 566 ROUND BALER:
Monitor, kicker. \$5,200. 573-765-4406.
Richland.

NEW HOLLAND 320 SQUARE BALER:
\$2,550. 573-765-4406. Richland.

**FULL BLOODED GERMAN
SHEPHERDS:** 2 female, 4 males, not
registered. 417-733-7062. Niangua.

4 BASKET FOLD TEDDER: \$3,600. 573-
765-4406. Richland.

IHC 1086 DIESEL TRACTOR: Cab & air,
130 hp. new ac, runs nice. \$13,000. 573-
765-4406. Richland

AMMO FOR SALE: Call for more
information. 507-822-4385. Hartville.

Starnes Auto LLC
22115 Rt. 66 • Lebanon, MO 65536
417.718.2707 Cell • 417.588.3159 Office
www.starnesauto.com

- 1999 FORD SUPER DUTY**
RED\$6,500
- 2002 OLDS BRAVADA**
WHITE, 130,XXX MI.....\$5,200
- 2003 BUICK CENTURY**
GOLD, 83,XXX MI.....**CALL!**
- 2003 FORD EXPEDITION**
WHITE, 130,XXX MI.....\$6,200
- 2004 GMC SONOMA PEWTER, CREW CAB,**
4WD, 154,XXX MI\$6,500
- 2005 VOLKSWAGEN BEETLE**
BLUE, 149,XXX MI.....\$2,850
- 2012 CHEVY COLORADO**
ORANGE, 156,XXX MI.....\$6,500

NOW HIRING
Painters and Glass Installers



WE DO ALIGNMENTS!

2020 KANSAS CITY CHIEFS:
McDonalds, red Friday, Superbowl Champs
flags, unopened, NIP, \$15 each. 573-854-
8132. Salem.

JOHN DEERE 435 ROUND BALER:
Monitor, kicker, net wrap 4x6. \$7,450. 573-
765-4406. Richland.

Buildings • Hunter's Cabins • Lawn Furniture



JAMCO Portable Buildings
800-688-2064 • 307 Enterprise Dr. • Seymour, MO • www.jamcobuilders.com

Rent To Own Plan

**SPECIALIST FROM
"HARDSCRABBLE" BOOK:** by Elbert
Crittenden Traw, DDS. Life in Stoutland/
Richland/Camden County area. Hard-
back, \$5.00. 417-532-2045. (Leave mes-
sage and phone number.) Lebanon.

BOAT TRAILER FOR 14-16 FT BOAT:
1970 with title, good condition, tires 480-12
in ok condition, lights work, wheel bearings
serviced, could convert to wave runner or
kayak, \$350. 816-803-1834. Sunrise Beach.

JOHN DEERE 467 ROUND BALER:
Monitor, kicker, net wrap. 4x6. \$10,850.
573-765-4406. Richland.

1987 CASE IH DIESEL TRACTOR: Cab
& Cold Air, 120 hp, Commin engine good,
\$14,950. 573-765-4406. Richland.

IHC 986 DIESEL TRACTOR: 105 hp,
Canopy with Westendorf TA28 loader.
\$13,000. 573-765-4406. Richland.

**JOHN DEERE 6 FT. 3-POINT FINISH
MOWER:** \$1,600. 573-765-4406.
Richland.

LAND MANAGEMENT: We offer brush
and tree clearing, fence row clearing,
brush hogging, driveway repair/installa-
tion, yard prep and seeding. Call 417-689-
2317. Marshfield.

NEW HOLLAND 1411 DISKBINE: Good.
\$8,950. 573-765-4406. Richland.

JOHN DEERE 567 ROUND BALER:
Monitor, kicker, net wrap. \$9,650. 573-765-
4406. Richland.

County Clipper Mowers

COME BY FOR YOUR TEST DRIVE!



KAWASAKI & KOHLER ENGINES
DECKS RANGE FROM 42" TO 72"

**STEELVILLE
FEED & FARM**

573-775-2650 • 11 Cobblestone Rd., Steelville, MO
Mon-Fri 8am-5pm • Sat 8am-12pm • Sun Closed

**KEAN CUTTER 7FT 3-POINT FINISH
MOWER:** \$1,700. 573-765-4406.
Richland.

**2020 KANSAS CITY CHIEFS
SUPERBOWL COCA-COLA CAN'S:**
Unopened, mint. \$15 for 6-pack. 573-854-
8132. Salem.

NEW HOLLAND BAR RAKE: \$1,000.
573-765-4406. Richland.

**THE BITTERSWEET OZARKS AT A
GLANCE BOOK:** By Ellen Grace Massey
of Lebanon, hardback, 219 pages, \$12.50.
417-532-2045 (leave message and phone
number. Lebanon.

ROUTE 66 DINING & LODGING GUIDE: 183 pages, \$5.00. 417-532-2045. (leave message) Lebanon.

THEY ARE HERE Tiny homes cute, cute, cute columbiadiscountshomes.com

60% OFF
STORE CLOSING!

25% OFF

- All Office and Consignment Furniture
- All Hardware & Automotive Supplies

• Giftware • Pictures
• Lamps • Housewares
• Party Supplies
• School & Office Supplies

h.o.b. house of bargains
5505 Bus. 50 W., J.C., MO
(573) 893-2015
houseofbargains.com

POOL TABLES: Installations, moves, recovers, repairs, accessories, etc. 573-646-1700.

WEATHERED BARN WOOD

SIDING: 10" wide. 573-729-7226. www.pineridgerustic.com Salem.

I BUY.....used mobile homes.: Call or text 573-338-6250 or email GregS.CDH@outlook.com

GOSPEL, COUNTRY, ROCK CD'S: \$1 to \$5. 417-217-8504. Falcon.

LOG SIDING: 2X8 Pine/Western Cedar www.pineridgerustic.com 573-729-7226. Salem.

CONWAY HIGH SCHOOL BEARS 2000-2001 YEARBOOK. \$12.50. 417-532-2045. (Leave message and phone number.) Lebanon.

CENTRAL BOILER
CLASSIC EDGE
TITANIUM HDX

Eliminate high heating bills with Central Boiler's NEW, certified Classic Edge Titanium HDX OUTDOOR WOOD FURNACE. Call today!

Outdoor Wood Furnace
CentralBoiler.com

The Classic Edge 360, 560 and 760 HDX are U.S. EPA Certified

Yarbrough Equipment Sales & Services, Inc.
9776 E. State Hwy OO • Strafford, MO
417-736-2303 • 1-866-286-6901 • www.yarbeq.com

USED MOBILE HOMES: Call David at VILLA HOMES IN ROLLA 573-578-8072. Rolla.

ROUTE 66 – THE MOTHER ROAD BOOK: by Michael Wallis. Hardback, 243 pages, \$12.50. 417-532-2045. (leave message). Lebanon.

BUYING MOBILE HOMES: Call David at VILLA HOMES IN ROLLA 573-578-8072. Rolla.

TINY TINY TINY Homes Homes Homes – Call Marla 573-657-7040 chateauhomes.net

Best Antiques & Collectibles Under the Moon!

Hootie Hoot Hollow Antique/Resale

314-346-7098 • 314-610-0204 • 11520 Hwy. 64 • Lebanon
1/2 mi. from Bennett Spring State Park

PURE BRED FAINTING GOATS. Peacock patterned 3 month-old doeling. Package deal for 2 bucklings. Check www.greenacresvillage.com or call 573-216-7796. Lake of the Ozarks.

WANTED TO BUY ANTIQUE CARS: Convertible, Corvettes, unrestored, motors, parts considered. 870-324-1154. Ash Flat.

TINY HOMES – You gotta see these!! In Ashland. amegamobilehomes.com 573-657-2176.

REGISTERED HEREFORD & ANGUS BULLS: Home raised, Some Show-Me Select Qualified. 573-701-7828. Belgrade.

BLACK ANGUS BULLS: from 12 to 18 months. 417-932-4026. Summersville.

CUSTOM SAW MILLING: 417-533-4607, 417-664-1195. Lebanon.

KUSTER LOGGING

BUYER of Standing Timber
Oak and Walnut

Dozing Now Available

417-259-0047

References Available

WANTED, TIMBER TO LOG ON SHARES: Honest, reliable, references. 417-533-4607, 417-664-1195. Lebanon.

WASHBURN GUITAR: With case, two amps, one small and one large crate. Amps new. \$200 for all. 417-532-6561. Phillipsburg.

WANTED, TIMBER TO LOG ON SHARES: Honest, reliable, references. 417-533-4607, 417-664-1195.

SMALL SQUARE BALES OF STRAW: 417-932-4026. Summersville.

YOU HAVE OPTIONS FOR HEALTHCARE!

WE CAN HELP YOU NAVIGATE HEALTHCARE.GOV

Choices In Health & Life Insurance
Mike Eblen, Agent
417-532-3360
238 S. Jefferson Avenue Suite A, Lebanon

MISSOURI HISTORICAL BOOK: published by State Historical Society of Missouri. \$6.50. 417-532-2045 leave message. Lebanon.

FIREARMS: Professional Repairs and Restorations. Baron's Gunsmithing. 573-363-5801, Camdenton.

FERTRELL ORGANIC FERTILIZER: Free Catalog. 315-796-4370. Caulfield.

DARDEN PROFESSIONAL TIMBER HARVESTING, BUYING STANDING TIMER: Great prices, improve wildlife habitat and improve forest health. State Certified & Fully Insured! 573-247-4808 or 573-739-1122. Salem.

STAY-TUFF FENCE, Johnson concrete waterers, waterlines, hydrants, posts, panels, hydraulic hoses, & GOOD FOOD. Farmers Quik Stop. 417-991-1938. Lebanon.

Team Electrical & Plumbing
"The Professionals you can count on"
Electrical • Solar Power • Plumbing • Lighting Installation

100% Satisfaction Guaranteed | Fully Licensed & Insured | \$100 Estimates with upfront pricing

For the best quality of work every time...
Give "Team" a call today!
417-349-6200 • www.teamelectricalplumbing.com

LIKE NEW ARGENTINE: 1909 German Mauser bolt action 7x65x53 cal, also 300 rounds ammo and reloading dyes. \$950. 573-218-9231. Farmington.

LIONEL TRAIN SET: Steam engine, tender caboose and other car, track and transformer. \$195. 573-364-7465. Rolla.

MOEN KITCHEN FAUCET: Single lever, sprayer, new cartridge. \$45 obo. 636-239-2695. Washington.

WANTED: Old military rifles and pistols. 816-838-6254. Lees Summit.

MURRAY RIDING MOWER: Good tires, deck, blades, 5-speed, needs motor. \$150 or gun trade. 573-364-7465. Rolla.

JACK LALANNE JUICER: New \$40. 417-217-8504. Falcon.

BUYING STANDING CEDAR: Minimum 6-in diameter. 417-531-0403.

ONE DOUBLE SET OF WHEEL CHOCKS: Safety yellow. \$30 obo. 636-239-2695. Washington.

OFFICIAL TRACTOR OF TOUGH™



Marshfield Machinery Inc.

222 E. Madison • Marshfield, MO 65706
417-859-2117 • www.marshfieldmachinery.com

MahindraUSA.com © 2020 Mahindra USA Inc.

Mahindra
Rise.

NEW MAHINDRA
TRACTORS

1626 4WD & LDR 26HP
IN STOCK

USED TRACTORS

NH TL80A CAB, LDR 80HP
22,500
ZETOR 6320 W/LDR 66HP
8,500

USED ROUND
BALERS

HESSTON 945 4X5	9,000
MF 1745 4X5	8,500
JOHN DEERE 375 5X4	3,500
HESSTON 560 5X6	2,000
NH 850 5X5	1,500
VERMEER 605D 5X6	750

USED DISC
MOWERS

NH 465 9FT	2,500
------------	-------

USED MISC.

FRONTIER BALE PROCESSOR
8,500
SNAPPER ZERO TURN
2,750
BUSH HOG 2052 ZERO TURN
2,500
BUSH HOG POST HOLE DIGGER
1,200

Marshfield
Machinery Inc.

222 E. Madison
Marshfield, MO 65706
417-859-2117
www.marshfieldmachinery.com

SELL IT HERE!



TRADER

WEEKLY
MAGAZINE

417-532-2800 • www.myweeklytrader.com

ALLIS CHALMERS 7 FT BLADE: With Allis Chalmers hitch, \$200. Allis Chalmers 2 bottom plow \$200. 417-753-2747. Rogersville.

COOKBOOK COLLECTION: \$1.00 each. Many varieties. 417-532-2045. (Leave message and phone number). Lebanon.

ROLL 1958 B.U. LINCOLN WHEAT PENNY'S: Last year for these. \$60. Call pm. 573-764-3517.

BOOTS: Rubber and leather boots and hip waders. Men's 11, Women's 7, some insulated, \$15-\$40 obo. 636-239-2695. Washington.

WANTED: 1966 to 1977 Ford Bronco. 816-838-6254. Lees Summit.

BLACK 2007 SILVERADO 1500: 4x4 Ext Cab, 165,xxx mi., \$11,600. 417-531-3376. Grovespring.

DE DALIA COFFEE POT: \$40. 417-217-8504. Falcon.

ROLL 1959 B.U. MONTICELLO PENNY'S: First year for these. \$40. Call pm. 573-764-3517.

WANTED 4 BASKET MW TEATHER: Any condition or salvage. 417-859-4401. Mansfield.

PINE LUMBER FOR SALE: 2x4x8' \$4.50, 2x4x12' \$6.50, 2x6x8' \$6.00, 2x6x12' \$9.00. Call 417-247-7761 and 417-247-7100. Summersville.

LEBANON, MO. CEMETERY BOOK, and Calvary Catholic Cemetery listings. \$10. 417-532-2045. (leave message and phone number). Lebanon.

SNAPPER RIDING MOWER: Needs a tune-up & tire tubes. Only \$95. 573-364-7465. Rolla.

1950'S COLT REVOLVER DEALERS MEMORBILIA: All for \$100. Call pm. 573-764-3517.

HISTORY OF THE SCHOOL OF THE OZARKS: at Point Lookout. \$5.00. 417-532-2045. (leave message and phone number). Lebanon.

Fab Wor LLC



In addition to doing custom welding and fabrication, we offer...

Crownline Flat Beds — sales and installation
Move Bumpers — assembly and installation
Custom Mini Trailers • Corral Panels

Call us if you have a special project.

417-730-9357 • Hwy. 60, Seymour, MO.

WARSAW, MISSOURI OZARK ECHOES 1964 YEARBOOK, \$20. 417-532-2045. (leave message and phone number). Lebanon.

LAKE OF THE OZARKS – SUMMER FUN: Lots starting at \$3,950, \$79 down - \$79 per month. Beautiful Wooded Lots, short distance to the Lake. Free lake access and boat ramps. Immediate possession, own for investment, owner financing. Also Camping lots and Acreage tracts available. Prices good through August 2nd, Hwy 135 South out of Stover, MO. Take Lake Road 135-12 to the Ivy Bend Office. **Open Friday, Saturday, Sunday, call (573-372-6493) other days by appointment only.** Iveybendlandoffice.com

AM Outdoor Sales

Come see us for All your Skid Steer Attachments



WE HAVE EVERYTHING FROM PALLET FORKS TO FORESTRY MULCHERS!

31 Porter Rd • Eldon, MO • 573-434-9225 • www.amoutdoorsales.com

TANDEM DISC 8 FT WIDE: 3 point, hitch, like new condition, \$850. 417-753-2747. Rogersville.

JOHN DEERE 6 FT. 3-POINT FINISH MOWER: \$1,600. 573-765-4406. Richland.

FARM RAISED FRESH CATFISH: Pickup/delivered. 573-604-0674. Salem.

OZARK EMPIRE FAIR-SPRINGFIELD 60TH ANNIVERSARY COOKBOOK: 1937-1996, 144 pages. Prize winning recipes from the fair. \$9.50. 417-532-2045, (leave message) Lebanon.

450 ROUND BALES: 4X5 Netwrap, good quality. \$50. Bale. 417-345-5634. Phillipsburg.

METAL ROOFS: We repair leaky metal roofs with warranty. Also, flat roofs, very affordable, cover all state. 573-338-1148. Jefferson City.



Land Pride www.landpride.com

For Outstanding Products & Service

AGRI-ENTERPRISES

Getting Chores Done

LAND PRIDE
does that

DH25 SERIES DISC HARROWS
40-100 HP 72", 96" Widths

- Cat. 1 & 2 Hitch
- 20" or 22" Notched blades
- 3" Square frame
- 7-1/2" Blade spacing
- Angle front & rear gangs up to 21 degrees
- Adjustment handle to aid in angling
- 1/2" Thick bearing hangers

1-1/2 Miles South Of Licking, MO On Hwy 63
573-674-2203 • 1-800-653-7152
www.agri-enterprises.com

PAYING CASH FOR VINTAGE WHISKEY, BOURBON, RYE, SCOTCH, ETC.: Only full and sealed collections from old bars, estates, liquor stores, etc. Call or text 217-440-5752. St. James.

NEW PISTOLS IN STOCK: Go to roll-ingmead.com Located near Marshfield. 417-241-1523.

WOULD YOU LIKE A CATUS PLANT?: Blooms beautiful yellow flowers in the spring. Free. 417-457-1023.

A FRAME TINY HOUSE/SHED: 6ftx8ft, furnished, new floor, \$995. 573-759-7143. Viene.

1987 CASE IH DIESEL TRACTOR: Cab & Cold Air, 120 hp, Commin engine good, \$14,950. 573-765-4406. Richland.

THE HEART OF THE SPRING BOOK. A Bennett Spring Novel by Laura L. Valenti, 161 pages. \$6.50. 417-532-2045. (Leave message and phone number). Lebanon.

2017 BUICK LACROSSE PREMIUM: 17,000 miles, warranty, \$31,000 negotiable. 417-718-0014. Lebanon.

REGISTERED BORDER COLLIE PUPPIES: For sale, black & white, short haired, shots & wormed. 573-739-9431. Licking.

TAYLOR TRUCKS & EQUIPMENT

417-924-2026 • 2676 Hwy. 5 Mansfield, MO

DANUSER DEALER

Intimidator Tree Puller
T3 Post Driver & Other Attachments
New Mowers! Bush-Whacker, Big Bee Storage Containers & Dry Vans - 20' - 53'
 Farm Tires, New Semi Tires, PTO's & Parts for Rotary Mowers, Farm Tractor Implements, Plows, Used 15" Bush-Whacker Now In Stock, Discs, and More Skidsteer Attachments: Pallet Forks, Buckets, Grapples, Hay Spears, RR Ties

Bush-Whacker Heavy Duty Rotary Cutter



TRAILER PARTS & REPAIR | BUSH-WHACKER HD, SKIDSTEER BRUSH CUTTER

We Invite you To Come By & Look Us Over!
 Located 2.5 Miles North Of Mansfield, MO On Hwy 5

CHEST SIZE FREEZER: Full of meat. \$175 meat only. 573-327-9068. Desloge.

YOU OWN YOUR OWN HOME, why wouldn't you want to own your electric? GO SOLAR! Call 417-955-0062. Boliver.

4 BASKET FOLD TEDDER: \$3,600. 573-765-4406. Richland.

NEED SOMEONE TO DO MINOR FENCING: Installing gate & replace post. Must have bobcat for clean-up work and some trimming. Will pay \$1,000. 573-484-6447. Cherryville.

250 CANNED GOODS OF ALL KINDS: \$150 for all. 573-327-9068. Desloge.

175 ORIGINAL VCR MOVIES: \$1.00 each for make offer. 573-327-9068. Desloge.

JOHN DEERE 467 ROUND BALER: Monitor, kicker, net wrap. 4x6. \$10,850. 573-765-4406. Richland.



YOUR AD GOES HERE!

Add YELLOW Color For An Additional \$3 Per Reader Ad

All ads will include Phone Number (unless requested to be deleted by advertiser) and City Or Town, Phone Number with Area Code counts as one word. City or Town counts as one word.

RATE: 80¢ Per Word. All Classified Ads Require Payment Before Print.

(1) 80¢	(2) \$1.60	(3) \$2.40	(4) \$3.20
(5) \$4.00	(6) \$4.80	(7) \$5.60	(8) \$6.40
(9) \$7.20	(10) \$8.00	(11) \$8.80	(12) \$9.60
(13) \$10.40	(14) \$11.20	(15) \$12.00	(16) \$12.80
(17) \$13.60	(18) \$14.40	(19) \$15.20	(20) \$16.00
(21) \$16.80	(22) \$17.60	(23) \$18.40	(24) \$19.20
(25) \$20.00	(26) \$20.80	(27) \$21.60	(28) \$22.40
(29) \$23.20	(30) \$24.00	(31) \$24.80	(32) \$25.60
(33) \$26.40	(34) \$27.20	(35) \$28.00	(36) \$28.80
(37) \$29.60	(38) \$30.40	(39) \$31.20	(40) \$32.00

Place your Classified Ad TODAY!

417-532-2800 • 800-665-8875

Fax: 417-532-8140

Or Mail To: P.O. Box 192 • Lebanon, MO 65536

For your convenience we accept MasterCard, Visa, Discover or American Express



DEADLINE FOR CLASSIFIED ADS: FRIDAY 4:00PM!

Name _____

Address _____

City _____ Email _____

State _____ Zip Code _____ Phone _____

Ad Total \$ _____ X # Weeks _____ = Amount Enclosed \$ _____

WE NEED YOUR CAR OR TRUCK



LARGE SELECTION OF PRE-OWNED VEHICLES AVAILABLE.

ED MORSE
CHEVROLET
BUICK · GMC

ROLLA

FORMERLY FAIRGROUNDS AUTO PLAZA
NEW NAME. SAME TEAM.

100 Fairgrounds Rd., Rolla, MO

573-364-1002

EdMorseChevroletRolla.com