

FREE - TAKE ONE!

Vol. 28 No. 9

MAY 27, 2021

800-543-8271 • 800-665-8875

# WEEKLY TRADER MAGAZINE



Find us on Facebook

@myweeklytrader AUCTIONS PG. 12

VISIT OUR NEW WEBSITE! MYWEEKLYTRADER.COM

You pull it,  
we sell it...

CHEAP!



Lebanon, MO

22395 Rt. 66

417-588-3555

Fax 417-588-8955



# U-PULL-IT

SELF-SERVICE AUTO PARTS

We also have a large inventory  
of used tires and be sure to check  
out our used car lot!

Mon.-Fri. 8:00am-5:00pm • Sat. 8:00am-4:30pm

[WWW.SSUPULLIT.COM](http://WWW.SSUPULLIT.COM)

Located next to S&S Recycling.



For All Your Metal Recycling Needs

Lebanon, MO

22395 Rt. 66

417-588-3555

Fax 417-588-8955

Mtn. Grove, MO

8930 First Rd

417-926-3360

Fax 417-926-0180

Roll-off, Trailer, and  
Mobile Crushing  
Services Available

Monday-Friday 8:00am-4:30pm (Closed 12pm-1pm Lunch)  
Saturday 8:00am-Noon

email: [contact@ss-recycling.com](mailto:contact@ss-recycling.com)

Buyer of all types of scrap metal.

# Land

For Sale

Dallas Co., MO • 196 +/- acres



- 40 acres in pasture with nice pond
- Easy access only 15 miles off I-44 and located on a well-maintained county road
- 40 acre bottom field
- Lush clover fields on the property makes this parcel a great staging area for whitetail deer and a fantastic roost for the long beards.
- Gently rolling terrain makes for easy access and hunting.
- Hunting blinds and food plots in place
- 5 acres of developed food plots
- Live water creek and springs
- Property is 45 minutes to Springfield, 15 minutes to Buffalo and 2.5 hours to St. Louis
- Great deer and turkey hunting
- Water well and electric on property



**WHITETAIL PROPERTIES REAL ESTATE**

HUNTING | RANCH | FARM | TIMBER

**Brian Utecht | 417-766-5595**

[Brian.Utecht@whitetailproperties.com](mailto:Brian.Utecht@whitetailproperties.com)

[WHITETAILPROPERTIES.COM](http://WHITETAILPROPERTIES.COM)

Missouri's Top Land Specialist in 2014,  
2015, 2016, 2017, 2018 and 2019





Getting Chores Done  
**LAND PRIDE**  
*does that*

## DH25 SERIES

DISC HARROWS  
40-100 HP 72", 96" Widths



[www.landpride.com](http://www.landpride.com)

- Cat. 1 & 2 Hitch
- 20" or 22" Notched blades
- 3" Square frame
- 7-1/2" Blade spacing
- Angle front & rear gangs up to 21 degrees
- Adjustment handle to aid in angling
- 1/2" Thick bearing hangers

For Outstanding Products & Service

# AGRI-ENTERPRISES

1-1/2 Miles South Of Licking, MO On Hwy 63  
573-674-2203 • 1-800-653-7152 • [www.agri-enterprises.com](http://www.agri-enterprises.com)

**MISSOURI OZARKS BOOKS:** Missouri Orchids, \$3.75. Weird Missouri Book, a travel guide to Missouri's Local Legends and best kept secrets, 253 pages, HB, \$12.50. 417-532-2045. (leave message) Lebanon.

**LOG SIDING:** 2X8 Pine/Western Cedar [www.pineridgerustic.com](http://www.pineridgerustic.com) 573-729-7226.

**POOL TABLES:** Installations, moves, recovers, repairs, accessories, etc. 573-646-1700.

**ROUTE 66 – THE MOTHER ROAD BOOK:** by Michael Wallis. Hardback, 243 pages, \$12.50. 417-532-2045. (leave message). Lebanon.

**SMALL SQUARE BALES OF STRAW:** 417-932-4026. Summersville.

**LOOKING TO BUY:** Diesel 450C John Deere HiLift. 636-232-7480. Desoto.

**NOW TAKING ORDERS:** for strawberries. Rissler. 573-392-1857. Barnett.

**VOTED #1 BEST Preowned Car Dealership**

## TIM'S USED CARS

(573) 341-3828 • 1334 South Bishop (Hwy. 63) • Rolla, MO  
Next to Hwy CC • [www.tims-used-cars.com](http://www.tims-used-cars.com)

<p><b>2015 RAM 2500 TRADESMAN</b> Reg. Cab, 4x4, 5.7 V8, Auto, AC, 130,xxx Miles <b>Only \$19,900</b></p>	<p><b>2018 FORD EDGE SEL</b> AWD, 4cyl., Loaded w/ Options, 66,xxx Miles <b>Only \$23,900</b></p>	
<p><b>2013 CHEVY 1500 LT</b> Ext. Cab, 2WD, 5.3 V8, Power Equipped, 95,xxx Miles <b>Only \$17,900</b></p>	<p><b>2015 DODGE GR. CARAVAN SE</b> V6, 113,xxx Miles, Power Equipped <b>Only \$11,900</b></p>	

LARGE SELECTION OF CARS, TRUCKS, SUVs & VANS!

**FOR SALE**

**D6D Powershift Caterpillar**

\$40,000

OR TRADE FOR BLACK ANGUS COWS

**417-259-2538 • VANZANT, MO**

**WEATHERED BARN WOOD SIDING:** 10" wide. 573-729-7226. [www.pineridgerustic.com](http://www.pineridgerustic.com)

**FERTRELL ORGANIC FERTILIZER:** Free Catalog. 315-796-4370.



**Cheyenne Acres**  
Horse & Tack  
**BUY - SELL - TRADE**  
by Rolla, MO  
Call For Directions & Availability  
**Call Kip**  
**573-368-9402**

**SPECIALIZING IN HEAVY DUTY GATES**  
*Cow Country Gate Sales*  
Call Randy: 573-569-4754  
or Home: 573-539-2528  
Located at: Zimmerman Welding  
16889 Hwy 52, Barnett, MO



**SEEKING PLUMBER:** with experience in New Construction & Residential service plumbing. Must have experience with all types of plumbing repairs and the ability to trouble-shoot and repair many different plumbing problems. We are looking for someone that is outgoing, self-motivated, reliable and has quality ethics. Valid driver license with good driving record required. We offer excellent pay and long-term employment to the right candidate. Paid vacation, paid holidays and health insurance. Immediate employment available. Salary is based on experience. Please call. 573-348-2093.

**JOHN DEERE STX46 RIDING MOWER:** 46" cut, triple blade, Kohler motor, needs PTO wire and belts. \$195. 573-364-7465. Rolla.

**USED MOBILE HOMES:** Call David at VILLA HOMES IN ROLLA 573-578-8072. Rolla.

**BUYING MOBILE HOMES:** Call David at VILLA HOMES IN ROLLA 573-578-8072. Rolla.

**TINY TINY TINY** Homes Homes Homes – Call Marla 573-657-7040 chateauhomes.net

**WANTED TO BUY ANTIQUE CARS:** Convertible, Corvettes, unrestored, motors, parts considered. 870-324-1154.

**BUYING STANDING CEDAR: Minimum 6-in diameter. 417-531-0403.**

**THEY ARE HERE** Tiny homes cute, cute, cute columbiadiscounthomes.com

**TINY HOMES** – You gotta see these!! In Ashland. amegamobilehomes.com 573-657-2176.

**OZARK EMPIRE FAIR-SPRINGFIELD 60TH ANNIVERSARY COOK BOOK: 1937-1996, 144 pages. Prize winning recipes from the fair. \$9.50. 417-532-2045, (leave message) Lebanon.**

**WANTED, TIMBER TO LOG ON SHARES:** Honest, reliable, references. 417-533-4607, 417-664-1195.

**I BUY.....used mobile homes.:** Call or text 573-338-6250 or email [GregS.CDH@outlook.com](mailto:GregS.CDH@outlook.com)

**BIRD CAGE:** on stand with tray and toys. \$65. 636-239-4124. Washington.



**Meadowview Dutch Market**

Call to Order 417-993-3017

Discount & Surplus Groceries • Prices Subject to Stock on Hand

**DELI SPECIAL**

**COOKED SALAMI** ..... REG. \$4.49 LB. ..... **SALE \$3.99 LB.**

**AMERICAN CHEESE** ..... REG. \$4.99 LB. ..... **SALE \$4.49 LB.**

TRY our Fresh Homemade DELI Sandwiches: TURKEY, HAM, ROAST BEEF, ITALIAN, BLT'S, PULLED PORK AND BLT PULLED PORK (MADE YOUR WAY)!  
COME IN OR CALL to order! ALSO Custom Deli trays! Veggie OR FRESH Meat-N-Cheese!

<b>GET OUT THE GRILL!</b>	<b>Pork Tenderloins or Fillet</b> <b>\$2.79</b> LB.	<b>4lb. Box Beef Patties</b> <b>\$5.99 ONLY</b> EA. 16 1/4 LB. PATTIES \$1.49 LB.	<b>Smoke or Seasoned Pork Chops</b> <b>\$1.29</b> LB.	<b>Local Homemade Popcorn</b> <b>\$2.19</b> 8 OZ. BAG GREAT VARIETY
	<b>Local Made Grilling Pellets</b> <b>\$11.99</b> 20 LB. 100% NATURAL	<b>Easy BBQ Charcoal Lump</b> <b>\$2.99</b> EA. 7 LB. BOX 100% NATURAL	<b>Fresh Homegrown Strawberries &amp; Tomatoes</b>	<b>Fresh Fruits &amp; Veggies</b>
			<b>Florida Farm Fresh Cantaloupes</b> <i>Very! Very! Sweet!</i>	<b>Neapolitan Ice Cream</b> <b>99¢ EA.</b> 56 OZ. <i>Great Flavor!</i>

**MEADOWVIEW DUTCH MARKET**  
417-993-3017 Hours: Mon-Thurs 8-5pm  
Fri 8-6pm • Sat 8-5pm  
23 Miles West on Hwy 64 • Right on T Hwy  
9 miles • Left on E Hwy 1 mile on Left

**Versailles Dutch Country Store has Flowers!**

**NOW ACCEPTING CREDIT, DEBIT CARDS & EBT**

**DUTCH COUNTRY STORE, LLC**  
573-378-4395  
Hours: Mon-Thurs 8-5pm  
Fri 8-6pm • Sat 8-5pm  
5 miles East of Versailles off Hwy C on Kelsay Road

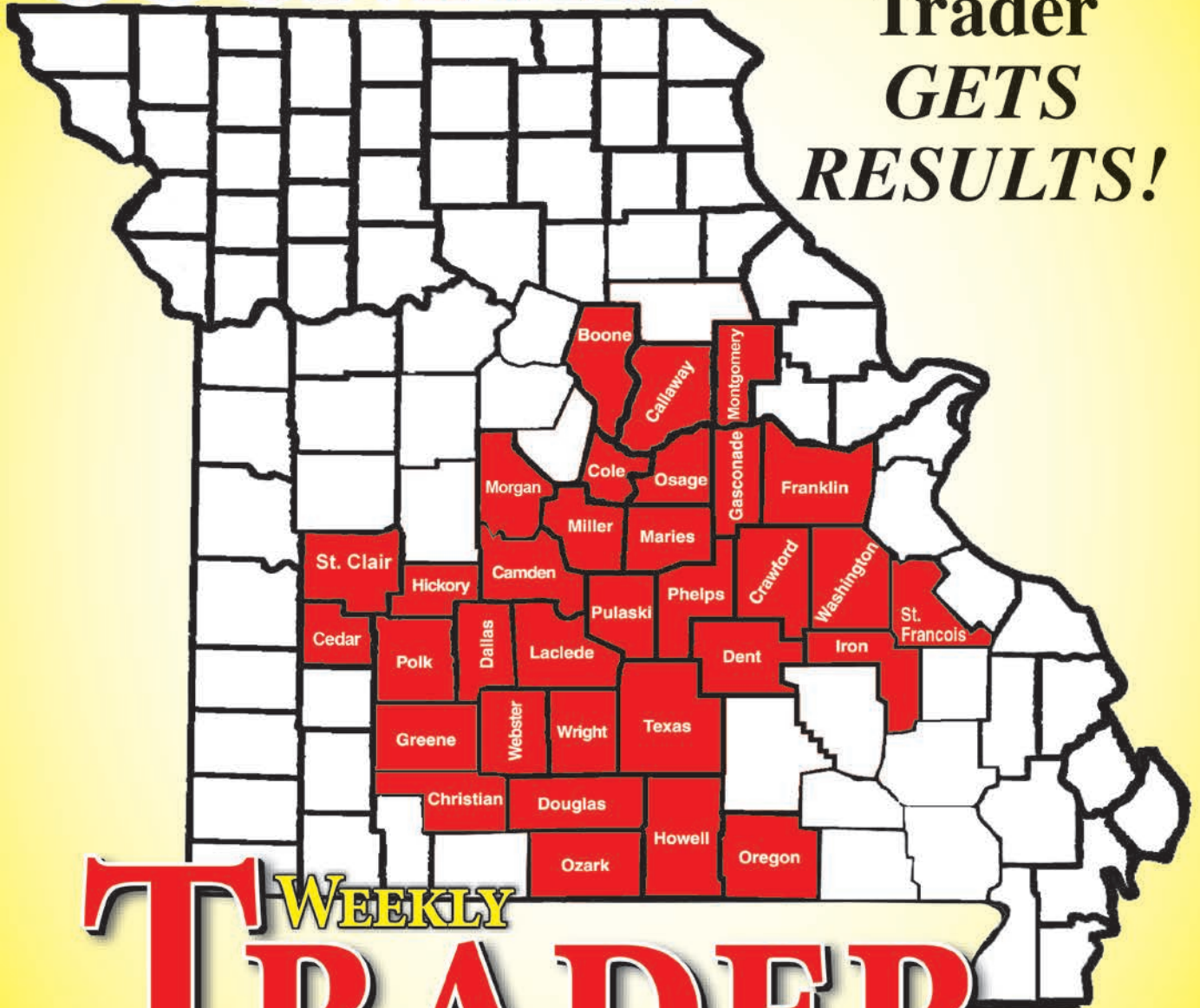
Sale Dates May 26<sup>th</sup>, 2021 to June 2<sup>nd</sup>, 2021 while supplies last!

**Large Selection OF FLOWERS**  
*Great Variety*  
**10% OFF**  
Hanging Baskets, Planters, Single Pots and Much More!

*This is...*

# WEEKLY TRADER COUNTRY!

The Weekly Trader *GETS RESULTS!*



# WEEKLY TRADER MAGAZINE

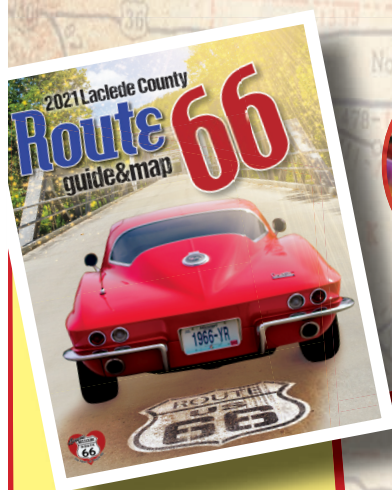
**Place Your Ad With Us Today!**

**417-532-9131** CHECK US OUT ONLINE AT: [myweeklytrader.com](http://myweeklytrader.com)

# Take a drive to Lebanon in the heart of Laclede County!

# ROADTRIP!

## So much to do waiting for YOU!



**Pick up a copy of the Route 66 Map and Guide...**

Cruise the Mother Road from Hazelgreen to Phillipsburg. Stop at the historic sites, grab a burger or some ice cream along the way.



### Enjoy a great meal!

Lebanon is home to many great restaurants. If you are hungry, you will find just about any kind of food you are looking for. Enjoy one of the many fast food restaurants you are familiar with or try out one of our great locally owned restaurants.



### Take a walk in the park!

Lebanon is proud of our parks and recreation department. We invite you to enjoy one of our many beautiful city parks. You will find walking trails, a skate park, the city swimming pool plus great playground equipment for the kids.



### Shop for Antiques!

You will find lots of great antique and second-hand stores in Lebanon. Whether you are Downtown, or out on the Interstate you will enjoy shopping for those special treasures.



### Visit the Past!

Don't forget to visit the Route 66 Museum at 915 South Jefferson. You will enjoy lots of old photos and memorabilia from the past. The museum is a must see if you are interested in the famous highway.

*Come On In*  
*We're* **Safely**  
**OPEN**



**Visit Historic Downtown Lebanon!**

If you are looking for a great place to shop, you will find over 50 shops including boutiques, jewelry stores, home décor, flowers, ice cream, shakes, salons, restaurants, floor covering, and antique stores.

**Shop Fresh!**

Be sure to visit the Farmer's Market on Jefferson Avenue. The new market pavilion was just completed. You will find lots of fresh produce, fresh eggs, meat and lots more. Plus, you will be supporting our area farmers when you shop the market.

**Shop Local!**

Continue driving south on Jefferson Avenue and you will find additional shopping including many of the big box stores you enjoy. In addition you will find a number of boutiques and restaurants.

**Take a trip to the Fast Lane!**

Lebanon is home to 2 great race tracks. If you are looking for a fun evening excursion, you are sure to enjoy all the excitement waiting for you during racing season in Lebanon.

**Fish with us!**

Bennett Spring is the most-visited state park in Missouri - we know why! The park stream is stocked daily with rainbow trout waiting for lucky fishermen. Fishing may be the main draw but the area also offers many other amenities such as a dining, campgrounds, cabins, hiking trails, floating by canoe, kayak or raft! Bennett Spring has what you need to make every trip one to remember.

**Safe Travels Start Here!**



CDC safe gathering guidelines are followed.

**Buildings • Hunter's Cabins • Lawn Furniture**



**JAMCO BUILDERS**

**JAMCO Portable Buildings**

800-688-2064 • 307 Enterprise Dr. • Seymour, MO • www.jamcobuilders.com

**Rent To Own Plan**

**KUSTER LOGGING**

**BUYER of Standing Timber Oak and Walnut**

**Dozing Now Available**

**417-259-0047**

**References Available**



**REGISTERED HEREFORD & ANGUS BULLS:** Home raised, Some Show-Me Select Qualified. 573-701-7828. Belgrade.

**FIREARMS:** Professional Repairs and Restorations. Baron's Gunsmithing. 573-363-5801, Camdenton.

**CUSTOM SAW MILLING:** Lebanon. 417-533-4607, 417-664-1195.

**TREES OF MISSOURI FIELD GUIDE BOOK:** 148 pages, \$4.50. 417-532-2045 (leave message and phone number). Lebanon.

**WANTED, TIMBER TO LOG ON SHARES:** Honest, reliable, references. 417-533-4607, 417-664-1195.

**CAMPER WINDOWS FOR SALE:** \$200 for all. Call for sizes 417-664-8823. Conway

**VINTAGE POCKET KNIFE COLLECTION:** 1950's + 60's, 26 models. \$150. 573-764-3517. Call in pm. Gerald.

**GARAGE DOOR:** 7 ft high, 19 ft. wide, white insulated and hardware. \$175. 636-239-4124. Washington.

**METAL CAGE:** with tray, 54" long, 3 feet wide, 45" high. \$80. 636-239-4124. Washington.

**SIMPLICITY GARDEN TILLER:** Rear tine, \$475. Lebanon.

**FEMALE ENGLISH CREAM GOLDEN RETRIEVER:** 2 years old, spayed, AKC, very friendly, calm. \$700 adoption fee. 630-687-0705. Falcon.

**ROUND BALES HAY:** Net wrapped. \$29.50. George's Tack, Saddle & Feed. 573-346-7866. Camdenton.

**THOMAS KINCAID BOOKS:** \$2 each. 417-532-6561. Phillipsburg.

**CAR DOLLY:** Heavy duty, adjustable width ramps, good condition. \$900. 417-753-2747. Rogersville.

**WANTED:** Hay to cut, within 50 miles of Salem. Buy standing in field or cut in shares. Green Meadow Farm. 573-247-8055. Salem.

**BLACK AGUS BULLS:** from 12 to 18 months. 417-932-4026. Summersville.

**QUALITY BONUS AVAILABLE**  
Increase your profit by 4¢ per lb.

**Kentucky-31 Tall Fescue Producers**

**ADD PROFIT TO YOUR OPERATION**

**55¢ per lb., Dry Seed**

With over 30 buying stations, there's a station near you!

**CALL for the Pennington Seed Fescue Buying Station nearest you**

**417-456-3338**

**PENNINGTON**  
THE GRASS SEED PEOPLE®

THE PREFERRED FESCUE SEED BUYER since 1972  
Toll Free 1-800-658-0410, 303 S. Grand Street, Greenfield, MO 65661





# ON-SITE JOB FAIR

## JUNE 5

8 AM - 12 PM

We're hiring welders, fabricators, assemblers and more—with incredible incentives including a \$750 retention bonus (\$250 after 90 days; \$500 after 9 months). Benefits also include paid time off and vacation time for full- and part-time workers.

Join us between 8am to 12pm, and become part of one of the fastest-growing industries in America. If you can't attend the job fair, view available jobs and apply at [bit.ly/3hx4QUM](https://bit.ly/3hx4QUM)

Lowe Boats  
2900 Industrial Drive  
Lebanon, MO, 65536

# **LOWE** **BOATS**

LOWE BOATS IS AN EQUAL OPPORTUNITY EMPLOYER.



**CUSTOM HARVESTING OF YOUR HAY:** 4X5 round or small square bales. Green Meadow Farm. 573-247-8055. Salem.

**MISSOURI HISTORICAL BOOK:** published by State Historical Society of Missouri. \$6.50. 417-532-2045 leave message. Lebanon.

**VERNON 808 8MM MOVIE EDITOR:** With box and 8mm splicer. Like new, original owner. \$65. 417-844-4319. Springfield.

**TWO KITCHEN TABLES AND CHAIRS:** \$100. 573-724-2822. Bismarck

**THE BITTERSWEET OZARKS AT A GLANCE BOOK:** By Ellen Grace Massey of Lebanon, hardback, 219 pages, \$12.50. 417-532-2045 (leave message and phone number. Lebanon.

**BOOTS:** Hip waders, rubber and leather boots. Men's 11, Women's 7, some insulated, \$15-\$45 obo. 636-239-2695. Washington.

**VEHICLE FOUR WHEEL DOLLY:** 1000 lbs max weight. \$75 firm. 417-457-1023. Raymondville.

**A-FRAME TINY HOUSE/SHED:** 6ft.x8ft., new floor, \$995. 573-759-7143. Vienna

**LOOKING FOR FALL 2021 DEER HUNTING LEASE:** Please call 314-713-8519.

**ROUTE 66 DINING 7 LODGING GUIDE:** 183 pages, \$5.00. 417-532-2045. (leave message) Lebanon.

**LIONEL TRAIN SET:** Steam engine, tender, caboose and other car, track and transformer. \$195. 573-364-7465. Rolla.

**FOR SALE:** .223 Tulammo \$15.00 box, Aguila 22 ammo \$9.00 box 22 Ammo Junior \$8.00 box all 22 brass cases. 417-322-5470. Falcon.



**Wright Spray Foam Insulators, LLC**  
Commercial & Residential  
Call for FREE Estimates!

Ervin Gingerich 417-926-2052  
B. Eli Yoder 417-746-4932

**VENDORS WANTED**  
**OUTDOOR SWAP MEET AT TREASURES**  
JUNE 11 & 12

**FREE TO ATTEND**

Booth Spaces Available  
**20'X35'.....\$20**

417-532-6666 for Information  
Located at 1060 Tower Road  
Lebanon, MO.



**Take A Trip Back In Time & Appreciate The Simpler Things In Life!**

- Dry Goods • Gifts • Housewares • Kitchenwares
- Handmade Toys • Jams, Jellies & Pickles
- Handmade Soaps & Lotions • Cookbooks
- Candles & More!

**10am-5pm Mon.-Sat.**  
Directions: West on Hwy 64, 10 Miles past Bennett Spring Park. Turn right on Hwy T, then on YY to Store. Follow signs.



**RADIATOR/FAN SCHROUD:** Fits international model tractors models 200, 230, 240. \$125. 636-239-2695. Washington.

**KITCHEN FAUCET MOEN:** Single lever, sprayer, new cartridge. \$45 obo. 636-239-2695. Washington.

**NEW HOLLAND S69:** Small square baler, New Holland 1002 bale wagon, small square bale loader, all \$2,500. 417-770-1158. Tunas.

**FORD PARTS AND BODIES:** Call for information. 573-858-3238. Salem.

**HESSTON 5530 3x4 ROUND BAILER:** \$2,800 obo. 417-588-2622. Lebanon.

**5409 DITCH MOWER:** 417-664-3425. \$3,500. Lebanon.

**GERMAN SHEPHERD PUPPIES:** Black and Red. Seven males. 573-378-4447. Barnett.

**MURRAY RIDING MOWER:** Good tires, deck, blades, 5-speed, needs motor. \$150 or gun trade. 573-364-7465. Rolla.

**FOR SALE:** 880 Oliver diesel and F30 Farmall. \$2,000 each. 417-349-2908. Cabool.

**1972 220 ALLIS CHALMERS:** With Koyker loader, Koyker backhoe, very good condition. 417-679-2276 or 417-989-0338. Gainesville.



109 E. 20th St Suite A • 600sq'

109 E. 20th St Suite B • 600sq'

109 E. 20th St Suite D • 600sq'

3600sq' Old Pizza Hut Building

**THOMPSON**  
R • E • N • T • A • L • S

**(417)926-RENT**  
Commercial Properties Available  
Located next to Walmart with visible highway 60 frontage

**12 GAUGE PUMP SHOTGUN & 3 BOXES SHELLS: \$400. 417-532-4108. Lebanon.**

**FOUR HOUSE TRAILER RIMS FOR SALE: \$5 each. 573-308-5884. Rolla.**

**LARGE MEAT SMOKER: \$100. 573-724-2822. Bismarck**

**HEAVY DUTY CROWBAR: For Hauling cars and trucks. \$100 or trade. 573-724-2822. Bismarck**

**FOR SALE: Colman Military Lantern. \$100. Serious inquires only. 573-205-9401. Gerald.**

**ANTIQUe MILK GLASS BOTTLES: \$100 for all. Serious inquires only. 573-205-9401. Gerald.**

**127 ACRES M/L: 1/2 forest, hardwoods, re-conditioned 2-story farmhouse, 2.5 car garage, wood shed, free standing wood stove, fire place with insert, 3 ponds, survey, new plumbing, verified electrical, new roof. 1 hour to Springfield, 1 hour to lakes, 1 hour to Branson. Dallas County. \$599,999. [Toga4520@gmail.com](mailto:Toga4520@gmail.com).**

**1908 ALCOHOL BURNERS: \$100. Serious inquires only. 573-205-9401. Gerald.**

**2008 YAHAMA FIBERGLASS RIVER BOAT & TRAILER: 20 ft., new condition, used only 5 hours, 25 horse, asking \$11,500. 870-736-5340. Ash Flat.**

**ROSSI 410 LEVER ACTION RIO-GRANDE: Good condition. \$450. 417-588-7438. Lebanon.**

**2 MOUNTAIN FEIST: 2 females, white/black spotted, Mullins bloodlines, \$100 each. 573-578-9705. Brinktown.**

**HUSQVARNA RIDING LAWNMOWER FOR SALE: YTH 23V48, \$1,000. 573-821-6071. Freeburg.**

facebook

Email or Phone  Password  [Log In](#)  
[Forgot account?](#)



**Weekly Trader**  
[@myweeklytrader](#)

Home  
 About  
 Photos  
 Reviews  
 issuu  
 Posts  
 Community  
 Info and Ads

Create a Page




**WEEKLY TRADER MAGAZINE**

Like Share ...

Send Message

Search for posts on this Page

Broadcasting & Media Production Company in Lebanon, Missouri  
 5.0 ★★★★★

Community See All  
 324 people like this  
 333 people follow this

About See All



**WEEKLY TRADER MAGAZINE**

**KEN & KATHLEEN ARD AUCTION**  
 August 11, 2018 • 9:30am  
 HWY 19 S to CR 6250, Gladden, MO

**VEHICLES & EQUIPMENT**  
 Dodge Grand Caravan 172K  
 Chuckwagon 4x2 UTV  
 John Deere 487 Zero-turn mower 2246  
 best trailer  
 John Deere 845e  
 Island Round Baler 545 baler  
 Ferguson 725 Mower Conditioner  
 ickle  
 Swinger  
 kensler

**GUNS**  
 ing bolt action 25-06 w/ scope  
 Double barrel shotgun  
 308 22-R winchipe  
 jon 1100 12ga modified cheke 2-3/4  
 ing 20ga  
 4mm 54 cal muzzleloader  
 life Stack-on 24 gun  
 ses  
 smara  
 g blind

**HOUSEHOLD**  
 grasswaver  
 ouch  
 reshine  
 cedar log bed  
 bed and mattress

Dress and wood display cabinet  
 Occasional chair  
 Lot of misc kitchen ware  
 Miscellaneous knock-knocks  
 TV trays

**OUTDOOR**  
 880 grill made from fuel tank  
 ? - Outdoor swings  
 Bird Houses  
 Cookers  
 Lawn chairs  
 5 piece patio set  
 Rakes  
 Shovels  
 Misc yard tools

**TOOLS**  
 Chest tool cabinet  
 2 sets of MAC tools  
 Various MAC tools  
 Ball Joint sockets  
 Lot misc tools  
 3/4 ton log splitter  
 Nail guns  
 Silt 290 chainsaw  
 Table saw  
 Wood planer  
 Woodworking tools  
 tools

**REAL ESTATE**  
 To be offered day of sale

**Easy Section Auctioneers**  
**ABSOLUTE REAL ESTATE AUCTION**  
 SATURDAY, AUGUST 11, 10:00 A.M.  
 For Auction: Diverse and exciting real estate.  
 1/2 Tract 100 Acres, MO. Cash Deal, \$100,000.  
 1/2 Tract 100 Acres, MO. Cash Deal, \$100,000.  
 1/2 Tract 100 Acres, MO. Cash Deal, \$100,000.

**OUTSTANDING REAL ESTATE**  
 The Home at Jelliff Spring

**OUTSTANDING PERSONAL PROPERTY**

**CHUCK & MELISSA SWIFT, OWNERS**  
 2 Howell, Oregon & Chuck & Melissa Swift P/TS  
 www.GARYSWIFTAUCTIONS.COM  
 1000 Main, Lebanon, MO, 647-252-2100  
 www.GARYSWIFTAUCTIONS.COM

**ING ESTATE AUCTION**  
 Sunday, August 12, 2018 @ 1 p.m.  
 Location: 1000 Main, Lebanon, MO, 647-252-2100  
 Items: Zane Turn Riding Mower, Furniture, Antiques, Collectibles, Etc.

# Hickory County's BEST KEPT SECRET!

While the other stores are out of stock,  
**WE'VE GOT WHAT YOU'RE LOOKING FOR!**  
Hickory County's best kept secret, and the Ozark's  
**BEST PLACE TO SHOP.**



## WWW.OZARKBID.COM



**ONLINE AUCTION ENDING EVERY SUNDAY NIGHT @7PM**

*Online*  
**CRAWFORD**  
Auction Service <sup>LLC</sup>

Register and bid online   
@ [www.OzarkBid.com](http://www.OzarkBid.com) **Ozarkbid**

Contact Chase Crawford, Crawford Auction Service for more info @ 417-399-1904



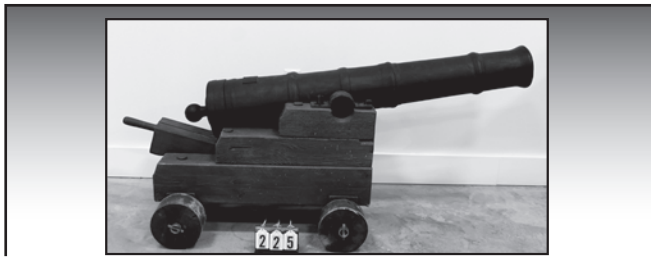
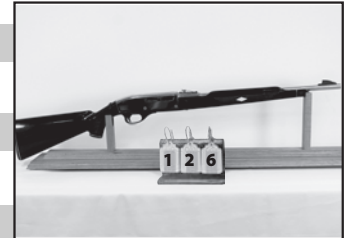
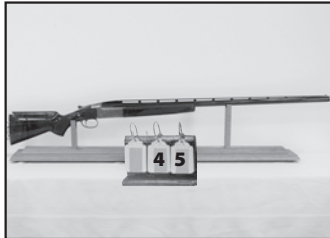
# Firearms Auction

Saturday, June 5th, 2021 • 10:00 a.m.  
*Sale Preview - Friday, June 4th • 6-9 p.m.*

The Red Shed  
 I-44 to exit 179 • 169 Truman St  
 Doolittle, MO 65550

## SELLING 320 FIREARMS

### SOME OF THE HIGHLIGHTS TO INCLUDE:



Nineteen Savage 99 Rifles

Over 80 Military Rifles and Handguns

WWII BAR Machine Gun Training Aid

Browning Citori Grade V 20 ga

Browning Citori Field Grade 28 ga

Nine Remington Nylon Rifles

Winchester 1866 .44 Rimfire Rifle

Dan Dial Caronade Cannon

East Ridge .50 caliber BMG

Two Wildey .475 Magnum - One Pistol, One Carbine

Three Randall 1911s

Remington 541T

Beretta 687 Silver Pigeon .410

Shiloh Sharps 1874 45-90

SMFG Company 1911 Marked US Property

Winchester M1D Garand with M84 Scope

Enfield No 4 Mark 1T Sniper Rifle with Scope and Crate

Ammo and Miscellaneous will sell after the guns

# J & J Sales, LLC

Pictures on [www.auctionzip.com](http://www.auctionzip.com) (auctioneer ID #28053) • Pictures also available on [Hibid.com](http://Hibid.com)

573-341-5450  
Office

573-465-4647  
Julie Reagan

573-465-0642  
JD Roach, Auctioneer

573-762-2227  
Sale Day Number

[jjsalesllc12@gmail.com](mailto:jjsalesllc12@gmail.com)

**NEW ATF RULE** - For ATF Form 4473, current name & address must exactly match the photo ID such as drivers license. **MUST MATCH!!** If not, we need supplemental government issued documentation with matching current address such as vehicle registration, property taxes, county or city utility bill. Cannot be a PO Box!

Concessions by Mt. Olive Baptist Church

Terms of Sale: Sale day announcements supercede any and all printed material. Photo I.D. required for buyer's number. No buyer's premium. Payment accepted by cash, check, debit/credit card. There is a 3% convenience fee unless paid by cash or check. Nothing removed until settled for. All state and federal firearms regulations will be followed. Not responsible for loss or accidents.

**SHELLY FARMS**  
**Shop Tools - Farm Equipment**  
**Hunting/Fishing - Horse Equipment**

# AUCTION

**Saturday, June 5 - 10:30am**

**3970 S Farm Road 219 • Rogersville, MO 65742**

**Directions: Follow Hwy 60 west from Rogersville 2 1/2 miles to Farm Road 223 - North 1 mile to Farm Road 170, west to Farm Road 219, North 1/4 mile.**



**PICK UP TRUCK**  
 2001 Chevy Duramax diesel 3/4 Ton 4wh-dr pickup - ball hitch in bed - 115000 mile - Nice Condition

**FARM EQUIPMENT**  
 Club Car Golf cart w/charger  
 Gooseneck Livestock Trailer 20ft  
 9 10ft panels, WW  
 14 WW 10ft cattle panels - New  
 4 panels with gate  
 Lamar Utility trailer 16ft, new tires  
 Round Bale feeder  
 ExCell car washer 3200 psi Honda 11 horse engine  
 Priefert Squeeze chute  
 Grizzly Table saw G07712 10 in on wheels  
 Dyna Glow Shop heater 135000 BTU  
 2 Irwin 5" bench vises  
 Delta Truck storage box

**HORSE EQUIPMENT-TACK - 3 SEAT CARRIAGE**  
 Roberts Horse drawn parade carriage - Extra Nice  
 Roberts Horse training cart  
 Horse Trainer 2 wheel cart used  
 Sugar Creek Western Saddle - Rick Mayberry  
 Circle Y Saddle Flex 2 & stand & Pad 16" Saddle

**GOLF-FISHING-GUNS**  
 Titleist AP2 irons (4 through PW), 913 D2 Driver and 910 H Hybrid.  
 Travel bag - Wenger - New  
 Shimano bait caster reel

7 Shimano Chronarch bait caster reel  
 1 Shimano Curado bait caster reel  
 2 Shimano 2000 spin cast reel  
 7 G Loomis GL3 7' Fishing Rod  
 3 Quantum 6 1/2' Tour Fishing Rod  
 1 G Loomis 7' Crank Bait Fishing Rod  
 Huge lot Tackle Boxes & Lures  
 Plano Fishing Rod case - new  
 Gun case  
 MTM shot shell case 100 rds  
 Dutch oven - Lodge (1new, 2 used)  
 SKB golf travel case new with wheels

**GUITARS - MISC**  
 Taylor Grand Concert V-class Acoustic Electric Guitar SN 1105078080  
 Martin OM-21 Standard Series Acoustic Guitar SN 2255527

Gibson 58 Les Paul Standard Electric Guitar (Iced Tea Burst) SN 801148  
 Wicker coffee table  
 2 Pet Mate carriers - 30-60lb dog  
 ATEC M3 Pitching machine  
 Thomas the train sets & individual engines & cars - New  
 Chicken Coop - small  
 Couch - 2 chairs - 2 ottomans - Flexsteel  
 Horse tire swing  
 2 Duke Varmint Traps - New  
 1 Harrington Chain Hoist, 2,000 LB load Capacity,  
 20ft Hoist Lift - New



**Hoover Case - Auctioneer • 417-859-3204 or 417-844-6020**  
**MJ Johnson - Sale Manager • 417-838-0291**  
 Go to [www.caseauction.com](http://www.caseauction.com) for complete listing • [auctionzip.com](http://auctionzip.com) ID#24071

Terms: Announcements made sale day take precedence over all printed material. Neither Case Auction or Property owner guarantees the absolute accuracy of supplied information. Payment: Cash or Check with ID accepted.

Backhoe \* Tractors \* Pickup \* Trailers \* 40+ Guns \* Tools \* Primitives & Antiques \* Furniture

# HUGE ESTATE AUCTION

9:00 AM \* Saturday, May 29th \* 9:00 AM

**Location:** 11728 Farm Rd 2060, Monett, MO 65708 (East Purdy Area)

**Directions:** From Purdy take C hwy. east 2.7 mi, then left 2 mi. on F.R. 1100 then right on F.R. 1095 ¼ mi. then left



### BACKHOE - TRACTORS

Case 580 Super K Backhoe, shows 6475 Hrs. (Nice Older Machine, Runs & Operates Good);  
2001 Kubota L2600BT Tractor, 4x4 with LB402 Loader, (only 592 hrs);  
Ford 3000 Tractor, Gas, single remote, live power. (Clean all original tractor, Runs & Operates Good);

### PICKUPS - TRAILERS - UTV

1999 GMC 2500 Crew Cab, 4x4 Pickup with Bradford Style Hay Bed & Reg Bed (227,xxx mi.);  
2009 Kawasaki Mule UTV, 2wheel drive (368 hrs);  
2005 Hawke 10 ft. Dump Trailer, Elec./Hyd, Tandem Axle with Ramps;  
2006 Featherlite Aluminum 12ft. X 7ft. Flatbed Utility Trailer with Ramps & Tiedowns;  
1969 Ford F-100 2wd. Pickup 360, 3spd, (Complete for Parts NO TITLE);  
292/312, 240, 302 Ford Motor Core's;

### IMPLEMENTS - FARM

(9) 12ft. Corral Panels; Misc. Panels & Gates;  
100 gallon Poly Stock Tank;  
6ft. Poly Feed Bunk; 6ft. 3pt. Rock Rake;  
Danuser 3pt. Post Hole Digger;  
6ft. 3pt. Howse Brush Hog;  
(2) 5ft. Howse 3pt. Brush Hogs;  
(2) 6ft. 3pt. Blades; Ford 501 Sickle Mower;  
Dearborn 3pt. 2 Bottom Plow;  
(2) 3pt. Round Bale Movers;  
3pt. Rear Scoop & 3pt. Cherry Picker;  
(2) 48" Lawn Rollers;  
Lots of Farm Related Items not Listed;

### LIVE TRAP; MOWERS - CHAINSAWS - TOOLS

John Deere LX188 (running when parked);  
John Deere LX178 (running when parked);  
Lawn Boy Dura-Force 6.5hp Push Mower;  
Stihl MS660 Magnum Chainsaw;  
(2) Stihl MS290 & 024 Chainsaws;  
Stihl TS350 Super Chop Saw;  
Swisher 26 Ton, 8.5hp. Log Splitter;  
Front Tine Garden Tiller;  
Campbell Hausfeld 60 gal. Air Compressor;

Miller Thunderbolt AC/DC Stick Welder;  
Chicago Electric Dual Mig Welder 110v.;  
Forney Cutting Torch Set with Big Bottles;  
Tri-Star 16spd. Floor Model Drill Press;  
Ridgid Kollman K-75 Power Drain Snake;  
Powermate 5700 watt Generator;  
ProForce 2500 watt Generator;  
ExCell 2000 PSI Power Washer;  
Holland 4600SL Dual Trailer Jacks (new);  
Craftsman 10" Table Saw;  
Heavy Bench Grinder; 5" Starrett Bench Vice;  
Bell & Gossett 1510 ODT End Suction Pump;  
Concrete Mixer; Snap-On Tool Cart;  
Lots & Lots misc. Hand & Power Tools;  
3/4" Drive Socket Set;  
Step & Extension Ladders;  
Lot Lawn & Garden Tools;  
Lots & Lots of Shop Related Items not Listed;  
Lot Good New & Used Lumber & Used Tin;

### GUNS - AMMO

Browning 1885 High Wall, 22-250;  
Browning BAR II, 300 Win Mag. (Belgium);  
Browning A-Bolt 300 WSM;  
Winchester mod. 94, Crazy Horse Commemorative, 38-55 (1983 Mint in Box);  
Winchester mod. 100, .308;  
Winchester mod. 70, .270, Synthetic;  
Winchester mod. 70 XTR, 7mm Mag;  
Ruger M77 MKII 7mm Mag., Stainless/Synthetic;  
Ruger AR-556, 300 Black Out, (MIB, Never Fired);  
Savage mod. 93R17 .17HMR (MIB, Never Fired);  
Remington 700 Sendero, 7mm Mag;  
Remington 700 Sendero, .270;  
Remington 03-A3 30/06, Sporter w/ Fajen Stock;  
Thompson Center Venture .270WSM;  
J.G.A. Karabiner. 6mm Flobert, German (Rough);  
Mossberg Patriot, Fluted Barrel, 308;  
Mossberg ATR .308; CVA Stalker .22-250;  
Weatherby Vanguard (Youth) .223;  
Kel-Tec CMR-30 .22WMR (MIB, Never Fired);  
Remington mod. Nylon 66 .22;  
Winchester model 90 .22 WRF;  
Winchester model 90 .22 Long;

Winchester model 90 .22 Short;  
Winchester model 06 .22;  
Winchester model 290 .22;  
Mossberg mod. 715T .22;  
Westernfield M855 .22;  
Marlin 990DU Ducks Unlimited .22;  
Glenfield mod. 60 .22;  
Marlin mod. 25 .22; Noble mod. 235H .22;  
Stevens mod. 15A .22;  
Ruger Blackhawk .44 Mag. Stainless;  
Thompson Center Super 14 .35 Remington;  
Chiappa 1873 .22 Revolver;  
S&W mod. 909 .9mm;  
Springfield XD40 .40 cal; Ruger LCP .380;  
Bersa Thunder .380 (Blue);  
Kel-Tec .9mm (Blue);  
Diamondback DB380 .380;  
Citadel BOSS 25, AR Style 12ga. Shotgun (MIB);  
Remington 878 12ga. Poly Choke & Vent Rib; N.E.F. Pardner 20ga.;  
Springfield mod. 67 20ga;  
Gamo Big Cat 1200 Air Rifle;  
Lot Misc. Ammo incl. 5.56 \* 223 \* 357 \* 9mm \* 38  
30/06 \* 308 \* 45-70 \* 45 Auto \* 243 \* 7mm WSM  
\* 6.5 Creedmore \* 270 \* 7mm Mag \* 22 Mag \* 22;

### ANTIQUE - COLLECTIBLE - SIGNS - JUKEBOXES - BARBER CHAIR

Seeburg Select-o-Matic Jukebox;  
Wurlitzer model 2710 Jukebox;  
Lg. Lot 45 Records;  
1970's Coke Machine Can/Bottle (Works);  
Vintage Koken Barber Chair;  
Old Double Northwestern Gumball Machine;  
Champlin Gasoline Porcelain Sign, 36x36 (2 sided);  
Historic Route 66 Sign (MoDot);  
Misc. Other Signs (New & Older);  
Vintage Miller High Life & Falstaff Beer Clocks;  
Several Ertl & Tru-Scale Tractors & Implements;  
Bachman Rail King H.O. Train Set (NIB);  
Old Railroad Freight Cart;  
Old Wood Casket (Real);

Cast Iron BUCKEYE Implement Seat (Real);  
(2) Old Wood Chicken Crates;  
Cast Iron Chicken Fryer w/ Lid;  
Cast Iron Train Bell;  
Aunt Jemima & Uncle Tom Stuffed Dolls;  
(2) Wash Tubs on Stands;  
Misc. Wash Tubs, Buckets, Chicken Feeders, etc...;  
White Mtn Ice Cream Freezer;  
(2) Treadle Sewing Machines;  
Old Wood Boxes & Gas Cans;  
Old Red Wagons & Sleds;  
Old John Deere Owners Manuals;  
Cross Cut Saw; Old Screen Door;  
Kraut Cutters & Old Kitchen Items;  
Few Old Licence Plates;  
Reel Type Push Mower;  
Loose Hay Loft Trolley;  
Horse Drawn Loose Hay Elevator (complete);  
Horse-drawn Dump Rake;  
Horse-drawn Van Brunt Grain Drill;  
Several Good Horse Drawn Walk Behind Plows; Clipper #1B Seed Cleaner;  
Lots of Good Farm Oldies not Listed;

### FURNITURE - HOUSEHOLD - MISC.

G.E Upright Freezer;  
Amana Washer & Dryer;  
Antique Metal Lawn Glider;  
Antique Wood Rocker;  
Queen Sleigh Bed (Nice);  
Queen Adjustable Electric Bed Frame;  
Dresser & Chest; Antique China Hutch;  
Nice Kitchen Island/Bar;  
Matching Sofa & Chair;  
Several Pieces Nice Wicker Furniture;  
Very Nice Wicker Porch Swing;  
Sanyo 42" Flatscreen TV;  
Many more nice Furniture Items not Listed;  
Misc. Pots, Pans & Dishes & Small Appliances; Lot Nice Silverplate;  
Misc. Pictures & Nice Deco. Items;  
(2) Huffy Causeway Bicycles;  
Metal Swingset; Old Go-Cart;  
Little Tykes Style Child's Kitchen;  
1 pc. Stainless Toilet & Sink from Jail;  
Lots & Lots More Not Listed

### ESTATE OF: TOMMY TATE

**Auctioneers Note:** Large All Day Auction, Bring a friend as we will sell 2 Rings part of the day. See [fosterauctionservice.com](http://fosterauctionservice.com) for 100's of pictures.

See our website for pictures and more info!

**Auctioneer: Larry Foster Galena, Mo**

**Phone: (417) 723-8329 Cell: (417) 839-6860**

**www.fosterauctionservice.com Email: bidnowsold@aol.com**



# ESTATE AUCTION BOLIVAR, MO

# AUCTION

Due to the Deaths of the late Jack & Barbara Durbin we will sell the following Real Estate, Pickup, Tractor, Tools, Household, Collectibles and Misc. At the Home located 6 ¼ mile north of Bolivar on 13 hwy. To F.R. 380 go East ¼ mile to the Auction on

## Sat. May 29, 2021 at 9:00 am

**WATCH FOR AUCTION COMPANY SIGNS • LUNCH SERVED**

**FOR MORE PICTURES GO TO: WWW.BRUCEANDLEANAUCTION.COM**



### REAL ESTATE

Selling 40 Acre's m/l with a 2 Bedroom, 2 Bath Home. Home has Lrg. Family Room, Living Room, Dining Room, Kitchen, Utility Room, Sm. Office area, Carpet throughout, Ceiling Fans, Electric Baseboard Heat, Outside Fire Chief Wood Furnace. Home has a 2 year old Shingle Roof, Real Estate is approx. 80% open in permanent Grass, with a Pond, Property is Fenced. Real Estate has a approx. 30'x40' Metal Garage/Shop Combination with Concrete Floor, Lrg. Hay Barn W/Sheds on each side, 2 Smaller Storage Buildings. Real Estate is to sell at 12:00 Noon, For more info contact Auction Co. Real Estate sells with Reasonable Reserve Price. Family is motivated to sell to settle Estate.



### TRACTOR-EQUIPMENT

- 2011 Kioti DK35SE 4x4 35 HP, 76 one owner hrs. W/Kioti KL 351 Loader, Tractor has 4 Speed, 3 Range Transmission W/Reverser, Tractor has been shedded (in like new condition)
- Razorback BH-6 3 pt. 6' Brush Hog
- 3 Pt. Bale Carrier
- 3 Pt. Blade
- 3 Pt. Post Hole Digger
- 3 Pt. Hyd. Wood Splitter
- 6' Roller
- 3 Pt. Boom Lift
- 4 Homemade Feed Troughs
- 3-SPI 2 Hole Energy Free Automatic Cattle Waters (like new)
- Steel Post-Misc. Barb Wire
- Chain Link Fencing & Gates
- 4 new Rolls 2"X4" Dog Pen Wire

### PICKUP-BUILDING-TRAILERS

- 2001 Chevy 1500 LS 4X4 Ext. Cab Pickup 4.8-V-8 Motor, Automatic Transmission, 158,000 Miles, New Tires
- 8' X 10' Portable Wooden Storage Building
- 16' Tandem Axle Bumper Trailer
- 4' X 12' Tandem Axle Homemade Trailer (no title)
- Single Axle Small Bumper Trailer (no title)

### 4 WHEELER-TOOLS-MISC.

- Kawasaki Bayou 4-Wheeler W/Front & Rear Racks
- Troy-Bilt 18 hp Riding Mower
- 5hp 220v Air Compressor
- Lincoln 225 amp Welder
- Bench Model Drill Press
- 11hp Craftsman Generator
- 5 Drawer Craftsman Tool Box
- 5 Sections of Scaffle
- 2-24' Poly & Alum Ext Ladders
- 12' Werner Poly Step Ladder
- 4' & 6' Poly Step Ladders
- Briggs 5hp Pressure Washer
- Swisher Wheel Trimmer

### 4 WHEELER-TOOLS-MISC. CONT.

- Stihl FS-40c Gas Trimmer
- Craftsman Chain Saw (NIB)
- 2-Stihl MS180c Chain Saws
- 4-Metal Drawed Organizer Cabinets
- Several Good Electric Hand Tools (drills, saws, grinders)
- Ext. Cords
- Poly Tool Box
- C-Clamps
- Bottle Jacks
- Pickup Tool Boxes
- Sev. Loaded Organizer Cabinets
- Lot of Misc. Hand Tools
- 3 Wheel Barrows
- 6 Bottles of Tordon RTU Chemical
- Lot of Plumbing Hardware
- Gas Cans
- 2 Push Mowers
- Lawn Trailer
- 4 Wheel Wagon W/Sides
- Live Trap
- Lawn Roller
- Alum. 4 Wheeler Ramps
- Bikes
- Gas Grill
- Patio Set
- Lot of New & Used Lumber
- Lot of Scrap Iron & Copper Wiring
- Lot of Misc.

### HOUSEHOLD & COLLECTIBLES

- Lrg. Whirlpool Refrigerator
- Frigidaire Smooth Top Electric Range
- Sm. Holiday Chest Freezer
- Harman Model XXV Free Standing Automatic Pellet Stove (2 years old)
- Samsung Automatic Washer & Dryer
- 46" Sony Flat Screen TV
- 41" Panasonic Flat Screen TV
- 2-Sm. Flat Screen TV's
- Dining Table W/6 Chairs

### HOUSEHOLD & COLLECTIBLES CONT.

- Olhausen Regulation Slate Pool Table W/Cue's & Extra's (nice)
- 4 Pc. Oak Bedroom Set W/Mattress
- Lazy Boy Recliner
- 3 Cushion Divan
- Full Bed
- Dressing Mirror
- Sev. Book Shelves
- Ant. 2 Oak Curved Glass China Cabinets
- Oak Hall Tree
- Oak Secretary Desk
- Round Oak Table
- 4 Pattern Back Chairs
- 2 Oak Stand Tables
- 6' Glass Fronted Hutch
- Very Lrg. Lot Hundreds & Hundreds of Mickey Mouse Collectibles (Watches, Lunch Boxes, Cookie Jars, Glasses, Cups, Pictures, Figurine's, Dolls, Toys and Lots More)
- 2 Zenith Metal Trucks
- Zenith Train Set
- J.C. Higgins Model 29 Semi-Auto 22 Cal. Rifle
- Red Ryder BB Gun (NIB)
- Centurion Combination 10 Gun Safe
- Lrg. Cedar Chest
- Lrg. Lot of Costume Jewelry
- Lot of Blue Carnival Glass (Water Sets, Bowls & More)
- Pots, Pans and Dishes
- Metal Roll Around Bread Rack
- Lot of Kitchen Collectibles

## ESTATE OF JACK & BARBARA DURBIN

TERMS: Everything sells as is, where is. Nothing is to be removed until settled for. Payment of Cash, Check with Proper ID, or Credit Cards. Auction Company or the Owners will not be responsible for loss of items or accidents. Statements made the Day of the Auction take Precedence over Printed Matter.

SALE CONDUCTED BY **BRUCE & Le'AN AUCTION & APPRAISAL, LLC**  
THE AUCTION COMPANY THAT APPRECIATES YOUR BUSINESS

For more information and pictures go to our website at [www.bruceandleanauction.com](http://www.bruceandleanauction.com)

RONNIE BRUCE - Fair Play, MO  
417-777-1685 or 417-654-2214  
colronbruce@gmail.com

BRANDON BRUCE  
Fair Play, MO

BILLY BRUCE - Stockton, MO  
417-399-4800  
colbbruce@gmail.com



**PUBLIC AUCTION COLLINS, MO**

**AUCTION**

As we have sold our farm we will sell the following Truck, Trailers, Tractor, Skid Steer, UTV's, Tools and Misc. At the Home Located 5 miles West of Collins, Mo. On 54 Hwy. To J Hwy. Go South 2 1/2 miles on J to E.R. 1200 go West to the Auction on

**Sat. June 5th, 2021 at 9:00 a.m.**

**WATCH FOR AUCTION COMPANY SIGNS • LUNCH SERVED**

**FOR MORE PICTURES GO TO: WWW.BRUCEANDLEANAUCTION.COM**



**TRUCKS & TRAILERS**

- 2005 GMC 2500 HD Ext. Cab 4X4 Pickup Diesel Engine, Automatic Trans. 189,000 miles
- 2011 Hefty 24' Gooseneck Flatbed Trailer W/Dove Tail & Ramps
- 2008 Neckover 16' Gooseneck Stock Trailer one Divide Gate, Rubber Floor, Butter Fly Back Gates, Bar Top W/Tarp (like new condition)
- 4' X 6' Single Axle Bumper Trailers

**TRACTOR & SKID STEER**

- Kubota M8200 Cab 85 hp. 4X4 Utility Special Tractor W/High/Low W/Reverser, W/Woods 1020 Frontend Loader, Bucket & Bale Forks, 2050 Hrs.
- 2014 New Holland L230 Cab Skid Steer W/790 hrs. 2 Speed, Heat & Air W/7' Bucket
- Skid Steer Hyd. Quick Attach Tree Shear
- Skid Steer 7' Hyd. Grapple
- Skid Steer Bale Spike
- 12' Diamond Tooth Harrow
- 12' Hyd. Durabilt Pulltype Box Blade
- Rihno SD-15 Batwing 15' Brush Hog
- 3 Pt. Bale Spike
- 3 Pt. 200 Gallon PTO Boomless Sprayer
- Herd PTO 3 Pt. Model 1200 Broadcast Seeder
- 3 Pt. Bale Unroller

**UTVS & CATTLE EQUIPMENT**

- 2011 Honda Big Red 4X4 UTV W/Top, Windshield, 1415 Hrs. & Dump Bed
- 2016 Honda 350cc 4 Wheeler W/Front & Rear Racks
- 2001 Honda ES Rancher 4 Wheeler W/Front & Rear Racks
- Four Wheeler Ramps
- For-Most Calf Chute/Table (like new)
- Paul Portable Livestock Scale
- Stull Feeders 12 Volt UTV Cube Feeder
- 20-10' Portable Corral Panels
- Marlin 22 cal. Vet Pneu-Dart Model 196 XT22 Rifle
- Poly Stock W/Scope
- Lots of Darts & Acc.

**UTVS & CATTLE EQUIPMENT CONT.**

- 2-5' Priefert Poly Troughs W/Hay Racks
- 9 Concrete Feed Bunks
- 2 Bale Rings
- 3 Poly Stock Tanks
- Mineral Feeders
- 3-10' Metal Feed Troughs
- Misc. Panels & Gates
- 4-10' X 6' tall Wire Panels
- 60 Gallon 12 Volt Ag Sprayer
- Sev. Hundred Ft. 1 1/2" Plastic Pipe
- 5-50 lb. Bags K-31 Fescue Seed
- 4-50 lb. Bags Pearl Millet Seed
- Calf Pullers
- Lot of Misc. Vet Items (Syringes, Pour-on, Medicine)
- Lot of Misc. Fencing Items Electric & Standard Fencing
- 2 Stock Saddles
- Lot of Misc. Tack (Halters, Bridles and More)

**TOOLS & MISC.**

- Victor Act. Torch Set W/Bottles
- 9 hp. Gas Air Compressor
- 4000 Watt Generator
- Stihl ms250 Chain Saw
- Husqvarna 55 Chain Saw
- Milwaukee 1/2" Impact
- 2 Good 12 Volt Batteries
- 2- Gas Trimmers
- Honda 190cc Pressure Washer
- Schumacher 200amp Battery Charger
- 100 Gallon Portable 12volt Fuel Tank
- 300 Gallon Fuel Tank on Stand
- Several Log Chains
- Spare Tires foe UTV's
- Sm. Forge Anvil
- Misc. Spray & Chemicals
- Lot of Misc. Hand Tools
- Tool Boxes
- Lrg. Frigidaire Upright Freezer (good)

**TOOLS & MISC. CONT.**

- Garage Refrigerator
- Lrg. Gas Grill
- 2 Metal Patio Sets
- Fire Pit
- Nice Primitive Sitting Bench
- 3 Sm. Stained Glass Windows
- One lot of Misc.

**HAY**

- 70-4' X 5' Net Wrap Round Bales of 2020 Grass Hay Stored in Barn

**OWNERS: MR. & MRS. LARRY LUKE**

TERMS: Everything sells as is, where is. Nothing is to be removed until settled for. Payment of Cash, Check with Proper ID, or Credit Cards. Auction Company or the Owners will not be responsible for loss of items or accidents. Statements made the Day of the Auction take Precedence over Printed Matter.

SALE CONDUCTED BY **BRUCE & Le'AN AUCTION & APPRAISAL, LLC**  
THE AUCTION COMPANY THAT APPRECIATES YOUR BUSINESS

For more information and pictures go to our website at [www.bruceandleanauction.com](http://www.bruceandleanauction.com)

RONNIE BRUCE - Fair Play, MO  
417-777-1685 or 417-654-2214  
colonbruce@gmail.com

BRANDON BRUCE  
Fair Play, MO

BILLY BRUCE - Stockton, MO  
417-399-4800  
colbbruce@gmail.com

# R&R AUCTION SERVICE

## JUNE CONSIGNMENT AUCTION

### FRIDAY, JUNE 4 • 6PM

R&R Auction House • 1644 South Ash in Buffalo, MO

Our June Consignment will follow our usual sale inventory of furniture, antiques, collectibles, tools and much more. As we have had a house full of merchandise just being sold out we won't be able to list specifics until next week!

**So keep your eye on the Trader and our website for full details.**

# HERB LAPPIN ESTATE AUCTION

## SATURDAY, JUNE 5 • 10AM

265 Falling Rock Road • Elkland MO

From Buffalo, go East on 32 to H hwy, then follow H to Chicago Road. Watch for signs to auction site.

Maytag Gas range self cleaning oven, cabinet and table on wheels, Reed and Barton 1636 King Frances silver chafing dish, McCoy cookie jar, hall table, Frigidaire upright freezer, roll top desk, couch, dresser with mirror, glider, cedar bench, crock jug, Old Fiesta ware bowl with lid, end table, yard ornaments, antique iron wheel, Flex Response treadmill, metal chairs, 1999 Lincoln Continental, extension ladder, scaffolding, super fan, Invacare wheelchair, Westinghouse fridge, Porter Cable brad nailer, Antique ice box, metal cabinet, Milwaukee metal cut chop saw, Shop Vac, Harmonic balancer puller, saw table, gas jug, Bostitch, hornet nest, Jeg 700HD electric disc sander, Rotozip, air tools, sockets, wrenches, pliers, 3/4" drive sockets, screwdrivers, Sunex Impact

deep well sockets, Lincoln Welder, Campbell Hausfeld 60 gal, 6.5 shop compressor, Delonghi Percolator, metal swivel stool, mini frige, log boom, school desk, copper tubing, hand tools, chains, Honda 5.0 pressure washer, creepers, nuts and bolts, Craftsman Roll guard tool box, 4 drawer metal file cabinet, wood splitter, large floor jack, engine stand, cherry picker, pitch fork, train lights, squirrel cage blower, sheet rock banjo, motor stand, dolly, park bench, Oxygen/Acetylene set with torch, axle, log tongs, cant hook, fishing poles, several pipe wrenches, lawn aerator, rail wood fence, lawn cart, lawn roller, dining table and chairs, Yard machine riding mower, Atlanta Supreme wood stove, so much more that we can't list it all.



**View this auction and more at [www.rrauctionservice.com](http://www.rrauctionservice.com)**

**TERMS:** Cash, check, or credit card with proper I.D. nothing removed until settled for A 3% fee will be added to credit card purchases. Not responsible for errors in listing. Any announcement made sale day will take precedence over any printed matter. **Note:** Service will take every precaution to prevent accidents, but will not be responsible should any occur.

**GENERAL AUCTIONEERS**

**Auction & Appraisals**

**AUCTION SERVICE**

For more information contact Professional Auctioneer Russ Weeks at 417-576-7357 or check out [www.rrauctionservice.com](http://www.rrauctionservice.com)

Serving this area's auction needs since 1997 with honesty and professionalism.

[www.rrauctionservice.com](http://www.rrauctionservice.com)

(417) 576-7357 or (417) 345-4140

**CAGA**  
CERTIFIED APPRAISER

**MPAA**

# ESTATE AUCTION

**Saturday, May 29th, 2021 ~ 10:00 AM**

LOCATION: 9605 East Hwy 54, El Dorado Springs, MO; Directions: From El Dorado Springs Go 7 Miles East On Hwy 54 To Sale Site (Watch For Signs)

## Auction For Scott & Jerry Keezer Estate Heirs



### Antique, Modern Furniture & Appliances

Ant Cherry Buffet, Ant Cedar Chest, Ant Kitchen Tables, Sm Ant & Prim Furniture Pcs, Prim Wood Corner Display Shelf, Old Pictures & Prints, Solid Bookshelves W/Drawers 1 Has Secretary Drop Front Drawers, Kitchen Cario, Kitchen Island W/ Drawers, Matching Red Recliner, Loveseat & Couch, Over Size Recliner, 2 Prim Pantry Cabinets, New Home Sewing Machine In Cabinet, Dresser W/Mirror, Chest Of Drawers, Leather Office Chair, 3 Full Size Beds, Neat Metal Sort Drawer Cabinet, Several Waist High Storage Cabinets W/Drawers, Several Wall Cabinets, Store Shelving & Store Bins, Roll Around Store Stocking Carts, Several Folding Tables, Eden Pure & Other Heaters, Gold's Gym Treadmill, Image 8.0 Stepper, 6 Person Jacuzzi, 3 Side By Side Refrigerators, Gas Cook Stove, Upright Deep Freeze, 2 Washer & 2 Dryers, Other Items Not Listed

### Antiques, Collectibles & Households

Old Toys, Old Tins, Old Jewelry, 2 Old Mirrored Alcohol Advertising Pcs, Old Books, Old Glassware Of Various Kinds, Moon & Stars Anniversary Clock, Primo Water Cooler, Vita Mix 3600 Plus Food Mixer, Sm Kitchen Appliances, Pots, Pans

& Dishes, This Is Only A Partial Listing As Garage Outbuilding Has Several Boxes & Totes Stored Full Of Small Misc Antique & Household Items Unable To See Added Sale Day

### Car, Carport, Dog Kennel, Lean To, Gates, Panels, Posts, Lawn Mower, Gun Safe, Tools & Outdoor Items

2015 Chrysler Town & Country Van Fully Loaded, Auto Trans, Approx 61,000 Original Miles, 2 Car Carport, Long Dog Kennel Building, Dog Pen Panel, Pet Taxis, Cages, Calf Or Horse Lean To Hut, 6 Ft 3 Pt Bush Hog, Approx 100+ Wire Cattle Panels, Several Walk Through & Other Gates, Over 250+ Steel Posts, Shop Fan, Torch Set, Log Chains, Water Tank, 5th Wheel Hitch, Liberty Gun Safe, Craftsman Riding Mower, Toro Push Mower, Wheelbarrow, Cherry Picker, Like New Drywall Jack, Lg Construction Job Box, Yard Roller, Rigid Shop Vac, Dewalt Portable Air Compressor, Electric Power Washer, Stack On Roll Around Toolbox, Other Toolboxes, Sm Electrical Tools, Sm Hand Tools, Battery & Air Tools, Hardware Supplies, Gas Cans, Metal Ceiling Posts, Concrete Blocks, Some Lumber, Trolling Motor, Martin House, Yard Bench, Yard Ornaments, Smoker & BBQ Grill, Other Items Not Listed



**Auctioneers Note:** It Is An Honor To Be Conducting This Auction For The Keezer Family. This Will Be A Very Large Auction & There Will Be Hundreds Of Items Added Sale Day Not Listed So Please Plan On Spending The Whole Day. There Are Many Neat & Outstanding Pieces At This Auction. Care Is In Excellent Condition, Nice Carport & Lean To, Panels, Gates, Farm Related Items Are Excellent As Well. Great Tools & Outdoor Items. There Will Be Several Neat Antique & Household Pieces We Will Discover While Setting Up & Unpacking Boxes. Furniture & Appliances Are Good As Well So Please Plan Now To Attend. **Sale Order: Furniture & Appliances Sell First Then Move Directly Into Antiques, Collectibles & Households. At Approx 1:00 PM Will Offer Car, Carport, Dog Kennel, Equipment & Large Items. Remainder Of Tools & Outdoor Will Finish Auction. See Ya There!!!**

Terms: Cash or check with proper ID. Now accepting most major credit cards. Nothing removed until settled for. Statements made the day of sale takes precedence over printed material. Everything sold as is where is. Not responsible for accidents. Restroom available. Concessions Provided. Check our website for upcoming auctions and for additional pictures!!



## NANCE AUCTION SERVICE

No Matter How BIG or small, We Do Them All!

[www.nanceauctionservice.com](http://www.nanceauctionservice.com)

Col. Bill Nance 417-214-0093

In God We Trust

Philippians 4:13

# ESTATE AUCTION

**Monday, May 31st, 2021 ~ 10:00 AM**

LOCATION: 501 East Dade 162, Everton, MO; Directions: In Everton From The Corner Of Main & Springfield Go East On East Dade 162 1 1/2 Miles To South Dade 191 & East Dade 162 Jct Continue On East Dade 162 1/4 Mile to Sale Site (Watch For Signs)

## Auction For Art Lowe Estate



### Antique Jukeboxes, Antiques & Primitive Items & Horse Drawn Pieces

4 Ant Jukeboxes All Different Styles (Neat), Ant Pepsi Machine, Ant Cabinet Radio, Ant Cabinet TV, Ant Store Display Counters, Ant Trunks, Ant Wardrobe, Several Pcs Of Ant Furniture Of Various Kinds, Ant Horse Drawn Sled, Ant Horse Drawn Buggy Cart, Ant Buggy Frame, Ant Pepsi Cooler, Old Oil Lamps, Cast Iron Skillet, Old Metal Everton Sign, Old Records, Lots Of Old Jars, Old Fishing Collectibles, This Is Only A Partial Listing As We Dig Through Barn & Shed We Will Find Several Other Antique & Primitive Items Buried

### Antique & Classic Cars

1929 Cadillac LaSalle Car It Has Been Completely Restored, Show & Parade Ready, 1931 Plymouth Sedan Gangster Car Has Suicide Doors, Wood Spoke Rims, Completely Restored, Show & Parade Ready, 1955 Packard Panama Chipper Super Car Completely Restored, Show & Parade Ready, 1964 Chevy Corvair W/Convertible Top, Completely Restored, Show & Parade Ready, 1975 Oldsmobile Delta 88 Two Door Convertible Car, Completely Restored, Show & Parade Ready, 1964 & 1966 Lincoln Convertible Cars, Need Restores, Were Running When Parked In 1978, 1981 Ford 2 Ton Flatbed Wench Truck

### Boats, Camper, Bee Hive Items, Lumber, Mowers, Tool & Outdoor Items

Osprey Yacht/Sailboat W/Trailer & Mercury Motor, Silverline Fishing Boat W/Trailer & 70 HP Johnson Motor, Imperial 5000 Camper (Needs Work), Ant Wheel Horse 8 Riding Mower, Troy Bilt Riding Mower, M200 Electric Mower, Air Compressor, Chainsaw, Scaffolding, Ladder, Shop Cabinet, Several Pcs Of Large & Small Lumber Stored In Barn Out Of Weather, Some Scrap Iron, Over 100+ Bee Hive Boxes, Lg Honey Cooker, Some Other Bee Items, There Will Be Other Sm Tool & Outdoor Items Added Sale Day

### Tractor, Bush Hog, Lincoln Portable Welder, Hay Equipment, Steel Pipe, Cattle & Farm Related Items

Valtra 700 Diesel Cab Tractor W/Quickie Front End Loader, Lincoln Shield Arc Portable Welder, 2615 Legend 15 Ft Bat Wing Bush Hog, 10 Ft Bush Hog, 32 Ft Gooseneck Flatbed Trailer, 10 Ft Heavy Duty Blade, 7 Ft Cultivator, 3 Pt Carry All, Iron Wagon Frame, Sprayer Tank Frame Trailer, JD 435 Round Baler, New Idea 5410 Disc Mower, Rake Caddy 10 Wheel Hydraulic Rake, Front End Loader Or Skidsteer Hydraulic Tree Cutter From S&H, Hay Elevator, Several Heavy Duty Cattle Panels, Palpation Station, Approx 9 Continuous Pipe Fence, Several Pcs Of Various Size From Large To Small Steel Pipe, Steel Posts, Other Cattle & Farm Related Items



**Auctioneers Note:** It Is An Honor To Be Conducting This Auction For Mr. Lowe. He Has Been A Serious Collector Of Cars For Many Years. Due To Being Ready To Relocate Is The Only Reason We Will Be Conducting This Auction. There Will Be Lots Of Small Items That Will Be Added Sale Day We Will Uncover While Going through Buildings. Still Will Not Be A Huge Auction But The Quality Is There. Everything From Collector Cars, Farm Equipment, Antiques, Tools & Bee Keeping Items. You Do Not Want To Miss This Auction. **Sale Order: Will Start With Furniture, Antiques Then Move Into Small Tool & Outdoor Items. At Approx Noon Will Sell Collector Cars & Related Items Then Move Into Tractor, Equipment & Farm Related Items. See Ya There!!!**

Terms: Cash or check with proper ID. Now accepting most major credit cards. Nothing removed until settled for. Statements made the day of sale takes precedence over printed material. Everything sold as is where is. Not responsible for accidents. Restroom available.



## NANCE AUCTION SERVICE

No Matter How BIG or small, We Do Them All!

[www.nanceauctionservice.com](http://www.nanceauctionservice.com)

Col. Bill Nance 417-214-0093

In God We Trust

Philippians 4:13

# #1 AUCTION SOURCE IN CENTRAL MISSOURI

## SERVING 33 COUNTIES!

Vol. 27 No. 45  
**FEBRUARY 4, 2021**  
 800-543-8271 • 800-665-8875

**FREE TAKE ONE!**  
**WEEKLY TRADER MAGAZINE**  
 VISIT OUR NEW WEBSITE! MYWEEKLYTRADER.COM

Find us on Facebook  
 @myweeklytrader AUCTIONS PG. 8

**ATTENTION WOOD TURNERS!**  
*The Dale and Shari Robbins Collection*  
 Online bidding begins to close Sunday, February 21st at 7:00 PM CST  
**WWW.OZARKBID.COM**

- Industrial woodworking and turning equipment
- Custom art collection • Custom wood and materials
- Custom turning and woodworking tools

With the recent passing of Dale Robbins, his wife and business partner Shari has decided to sell Dale's tools and artwork. Dale was one of the top wood spinners in the nation. He and Shari toured the country selling their artwork from coast to coast. Dale was even featured on the cover of National Geographic magazine for his famous spinnings.

and a full listing try coming soon!  
 on this incredible auction, please Crawford at 417-399-1904.

**Ozarkbid**

**MACHINERY & FARM EQUIPMENT CONSIGNMENT AUCTION**  
**SATURDAY, MAY 1, 2021 9:30 AM**  
 CROSS TIMBERS, MO

**ONLINE ONLY EQUIPMENT AUCTION**  
**THURSDAY, FEBRUARY 25, 2021**  
 Bidding closes at 11:00 am CST

**www.SextonAuctioneers.com**  
**BID NOW!**  
 Much more equipment online!

2011 Caterpillar 957  
 2011 John Deere S780  
 2011 John Deere S780  
 2011 John Deere S780  
 2011 John Deere S780

**WEEKLY TRADER MAGAZINE**  
 Serving Central Missouri 33 counties!

**Auctions**

**DENMAR PROPERTIES AUCTION**  
 Saturday, March 20th 2021. Bids open at 10:00 AM

**LOWE CHEVROLET**  
 417-532-9131  
 100 Commercial  
 Lebanon, MO 65538  
 www.myweeklytrader.com

**IN PRINT & ONLINE!**

# TO ADVERTISE YOUR AUCTION, CALL 417-532-9131

# WEEKLY TRADER MAGAZINE

100 E. Commercial, Lebanon  
www.myweeklytrader.com  
www.facebook.com/myweeklytrader



Mickey Duckett  
CAL, MPPA, AARE, CES

## Mickey Duckett Professional Auctioneer

P.O. Box 1575, Ozark, MO 65721

(417) 353-2768

[www.mickeyduckettproauction.com](http://www.mickeyduckettproauction.com)



# ABSOLUTE REAL ESTATE EXTRAVAGANZA AUCTION

Lake Of The Ozarks, Pine Cove Rd., Edwards, MO

Online Bidding Ends Fri., June 4th @ 1:07

Closing at Climax Springs Civic Center on Sat., June 5th, 10-3

We've got building lots, lake homes, & boat docks, all located around the highly sought after Lake Of The Ozarks. You set the price at this absolute real estate auction. Over 70+ lots including assorted building lots, 2 lovely lake homes, a boat storage facility centrally located to the lake, and even 3 lake access parcels-2 with docks! We have lots with beautiful trees & wildlife, lots with peaceful lakeviews and all of them are approximately a mile or less to the lake. And the Lake of the Ozarks offers all the fishing, restaurants, boating and relaxation a person can dream of **PLUS A GREAT INVESTMENT!!** Take a look at our catalog and don't miss this great opportunity to fulfill your dream!

**Owners:** Michael & Nancy Klossner

**Auctioneer Note:** Great opportunity to buy real estate! Check out our Online Catalog!! For more auction terms, photos and register to bid, go to our website at [www.mickeyduckettproauction.com](http://www.mickeyduckettproauction.com)!!





Mickey Duckett  
CAL, MPPA, AARE, CES

## Mickey Duckett Professional Auctioneer

P.O. Box 1575, Ozark, MO 65721

(417) 353-2768

[www.mickeyduckettproauction.com](http://www.mickeyduckettproauction.com)



# EXTRAVAGANZA PERSONAL PROPERTY AUCTION

3081 Pine Cove Rd., Edwards, MO

Preview: Sat., May 29th, 12-2 Online Bidding Ends Fri., June 4th @ 1:07

Pick-up on Sat., June 5th, 10-3

**Items Including:** 1996 New Holland Lx665 Turbo skidsteer with quick connects, 1750 lift capacity & run-flat tires; 2000 Freightliner dump truck with 3126 CAT, 26,000 gross, & 163,000 actual miles; 1973 Dodge 1T dump truck w/440 magnum engine, 737 torque flight tranny, automatic & 103,000 miles; 1988 John Deere 650 Special Edition factory ordered backhoe drive attachment, 4X4, & only 2,070 hours; 1976 Corvette w/350 automatic, T-tops and **ONLY** 83,000 actual miles; 1996 Lowe 18' "Fish-n-Fun pontoon boat with 50hp Evinrude, live well, depth finder, trolling motor and cover; 2003 tandem axle heavy-duty dove tail trailer, **LIKE NEW** Yard Machine chipper w/ 10hp Tecumseh engine, **LIKE NEW** 2003 Suzuki 2-wd four wheeler, **LIKE NEW** log splitter, lots of **NEW** home improvement supplies, assort. hand/power tools, home decor items, home furnishings and **SO MUCH MORE!** Check out our catalog, **over 540+ items!**

**Owners:** Michael & Nancy Klossner

**Auctioneer Note:** A lot of New & Like New items! Check out our Online Catalog!! For more auction terms, photos and register to bid, go to our website at [www.mickeyduckettproauction.com](http://www.mickeyduckettproauction.com)!!



# PUBLIC AUCTION

## Monday May 31, 2021 9:00AM

### 940 S. Iron Mountain Rd Fordland, MO 65652

Directions: From Springfield Take Hwy 60 East 18 Miles To Iron Mtn. Rd. Turn North Across Hwy 60 Onto Iron Mnt. Rd. To Auction Watch For Signs.

**Railroad  
Collection  
250+ Guns  
& Ammo**

**Equipment, Vehicles & Misc- Noon\*** NH LX665 Turbo Skidsteer w/ 3500hrs\* 8090 Hesston Tractor w/ H&A Cab, Ldr & 4263hrs\* '92 Sea Breeze 31' RV w/ 4x4, Newer Tires, 36k Miles - Runs Good\* '62 Chevy Biscayne 2 Door w/ 383 Stroker Motor & 350 Turbo Trans\* '05 Dodge 4x4 w/ 189K Miles\* '03 GMC LTZ Ext Cab 4x4 New Tires, 150KMiles\* '02 Toyota Tacoma 4x4 Crew Cab\* '75 GMC C65 w/ 17k Miles\* '89 Ford F250 w/ Camper Shell\* '94 Jeep Cherokee\* 73 Alum Boat w/ Trolling Motor\* '96 Transcraft 45'x102' Flatbed Semi Trailer\* '95 Gooseneck 24' Stock Trailer w/ 8k Lb Axles & New Floors\* 32'x8' Alum Wilson Stock Trailer\* '97 Yamaha TD Deluxe 1300 Series Motorcycle w/ 29k Miles\* 6' Bushog\* JD Blade\* 2 Bottom Plow\* Mineral Feeders\* 5' 3pt Disc\* Priefert 500 Head Gate w/ Palp Cage\* Bale Rings\* Priefert Head Gate & Stand\* Priefert Calf Slider\* Round Pen\* 40+ Galv Corral Panels & Gates\* Sweep w/ Alley\* Alley Frames\* 100gal LD Tanks w/ Pumps\* Plastic Tubs\* Feeders\* 12' Hay Elevator **Large Collection Of RAILROAD Memorabilia- 9AM! 51+ Train Sets-** Railing, Marx, Williams, Hornby, Lionel, Marklin Silver Spike, Rio Grande, Amtrak, Shakespear, Frisco, General Frontier, B&O, Southern, Santa Fe, Norfolk & Western, Union Pacific, K-Line, & More\* Misc Trains, Tracks, Buildings, Bridges, Etc **Silver Plated RR Items\*** Spittoons\* Ice Buckets\* Creamers\* Silverware\* Utensils\* Platters\* Pitchers\* Covered Dishes\* Tea Pots\* S&P\* Compotes\* Butter Dishes & More! **RR Uniforms\*** Jackets\* Suits\* Vests\* Suspenders\* Pants\* Hats\* Belts\* Nameplates w/ RR Names & Titles\* Buttons\* Lapels\* Cufflinks\* Tie Tacs & More! **RR Signals, Signs, Lanterns & More** Engine Plates\* Signal Arms\* Lenses\* Passenger Car Lamps\* 8+ Kerosene Lamps\* 34+ Handheld Lanterns\* 12+ Lantern Globes\* 40- Lamp & Signal Lenses 3-12\*\* Adlake Electric Lamp\* Large Collection Of Signs & Signals\* RR Glassware & Misc Collectors Plates\* Bowls\* Suacers\* Platters\* Glasses\* Stewmware\* Tumblers\* Ashtrays\* Stone Crock Jug\* Shot Glasses\* Thermos\* Travel Mugs\* Gravy Baots\* Creamers\* Medicine Bottles\* Union RR 1967 Award Of Honor & More! **Misc RR Memorabilia** Coasters\* Swizzle Sticks\* Ice Cream Scoop\* Bags\* Cups\* Bottle Caps\* Waiters Badge\* Napkins\* Doilies\* Place Mats\* Toothpicks\* Tabasco Sauce Bottles\* Books\* Menus\* Pillowcases\* Hand Towels\* Table Cloths\* Pens\* Pencils\* Birthday Cards\* Stationary & Notepads\* Patches\* Magnets\* Stickers\* Hat Pins\* Lapels\* 38+ Decks Of Cards\* Puzzles\* Dominoes\* Gin Score Books\* 31- Trolley Tokens\* Envelopes\* Commemorative Coins\* 50- Ticket Punches\* Trading Cards\* 46- Sets Of Matches\* Trader Stamp Cards\* Calendars\* Flyers\* 800+ Postcards\* 144 Pocket Calendars\* Soap\* Money Clip\* Large Variety Of Pictures\* Manuals\* Logbooks\* Receipts\* Cancelled Checks\* Frisco Employee Magazines\* Nail Clippers\* Pocket Knives\* Rubber Coin Holders\* Hats\* Disposable Head Rest Covers\* Hat Plates\* Pins\* Uniform Bars\* Rail Nails\* Car Ties\* Santa Fe Mason Jar Lid\* Police Badge\* Santa Fe Measuring Tape\* Keychains\* Pendants\* Belt Buckles\* Pocket Watches\* Travel First Aid Kits\* Brass Luggage Tag\* Hand Mirrors\* Tie Pins\* Union Pacific Leather Belt & Buckle\* 8x10 Framed Glass Holographic Train In Tunnel\* "Springfield- A Time To Remember" By Charles Summey\* Variety Of Framed RR Pictures, Postcards, Articles, Advertisements, Etc\* Christmas Ornaments\* Large Collection Of Locks & Keys\* **Chessie Cat Memorabilia\*** **Fred Harvey & Harvey Girl Memorabilia** Train Key\* Box Of Keys\* 4 Milk Cans\* PITCHER\* Metal Bowl\* 5 Shovel/Coal Scoops\* Fire Nozzles\* Large "Mopac Agents Office" Glass Door\* 21- Railroad Oil Cans\* Telegraph Key & Sounder\* Wrenches\* Train Step Stool Boxes\* Metal Bucket\* Flashlights\* Stuffed Animals & Much More

**Furniture & Appliances- NICE!** Large Rustic Wood Harvest Table w/ 6 Chairs, Matching Entry Table & Large Farmhouse Hutch- Beautiful! \* Queen Iron Bed- Complete\* Queen Metal Bed Frame\* Twin Trundle Day Bed\* Couches w/ Chairs & Ottomans\* Twin Trundle Bed w/ Matching Shelves & Bookcases\* Wicker Table\* Coffee & End Tables\* Primitive Wood Cradle\* Wood Chairs\* Rustic Wood Cabinet\* Upholstered Chairs\* Blue & White Chair w/ Ottoman\* Large Armoire\* Credenza\* Southwestern Style Benches\* Barstools\* Shelves\* Bookcases\* Metal Locker Style Dresser\* Nightstands\* Dressers w/ Mirrors\* Chest Of Drawers\* Antique Trunk\* Antique Barber Chair\* Desk\* Dining Table\* Wood 9 Gun Cabinet\* File Cabinet\* Canoe Bookcase\* Table & 6 Chairs\* Large Cabinet\* Mirrored Curio Cabinets\* Marble Top Hall Tree\* **250+ GUNS (Selling After RR Items)\*** 200+ Long Guns Browning Citori Lightning 20ga\* 5- Rem 1100 410\* Win 9417 17HMR\* Win 9422M 22Mag\* Browning BPS 28ga\* Izhmash AK 223\* 2- Henry Golden Boy 22 & 22mag\* Ruger Mini 14 223\* Ruger Mini 30 7.62x39\* 3- Henry Big Boy 44mag, 357 & 45LC\* Franchi 912 12ga\* Rem 700 338win Mag\* SKS 7.62x39\* Legendary Frontiersman Win 99 38-55\* Rem 33 22\* Browning BLR 308win\* Browning A Bolt 338 Win Mag\* Browning Medallion 325WSM\* Rem 700 243\* Win 88 243\* Norinco SKS 7.62x39 Bolt Action\* Ruger 10/22 22cal\* Marlin Model 70 22\* Marlin Model 60 22cal\* Stevens 410\* Marlin 336W 30-30\* Win 94XTR 30-30\* Rem 7400 270win\* 2- JC Higgins Model 29 & 41 22cal\* Ithaca Model MM49 22cal\* Ruger America 22cal\* Revelation Model 125 22 cal\* Marlin Model 60W 22cal Tasco Scope\* Win 88 308\* Wards 22cal\* Weatherby Mark V 240\* Mossberg Model 42 M-C 22cal\* Sgf Trapdoor Carbine 1884 45-70\* Marlin Golden 32-22\* Century Arms 7.62x39\* Rem 700 308win\* Browning BPS 12ga\* Rem Fieldmaster 572 22LR\* Browning A Bolt Medallion 243win\* Revelation 350 20ga\* Marlin 100 22\* Browning A Bolt 243 WSSM\* Browning A Bolt Medallion 300rem\* Westernfield Model 32 22cal\* Win Model 67 22cal\* Marlin Diamond Jubilee Model 6060 22cal\* Win Model 370 28ga\* H&R Model 88 Topper 12ga\* Westernfield 12ga\* Mossberg Model 385KA 20ga\* Sgf Model 944 410\* Stevens Model 1244 12g\* Westerfield 410\* Elgin Arms Co 12ga\* JC Higgins Model 563.16 12ga\* Maverick 88 12ga\* Browning A Bolt Medallion 280rem\* Townleys 410ga\* Westernfield Model 15K 16ga\* Win 1200 12ga\* Marlin 30AW 30-30\* Marlin 60W 22\* Rem 870 12ga\* Stevens 320 20ga\* Stevens 940A 20ga\* Excel 410\* Moss 500E 410\* Stevens 9478 410\* 2- Rem 33 22\* 2- Win 370 410\* Norinco SKS 7.62x39\* Savage 99 308win\* Browning BLR 7mag\* Westernfield XNH806 22\* Rem 12A 22\* Savage 24 22/410\* Rem 870 Express 20ga\* Savage 99 284win\* Rem 11-48 28ga\* Rem 11-48 410\* Marlin 39A 22\* Rem 24 22\* Savage 220A 20ga\* Stevens 15 22\* Diamond Arms 410\* Win 67 22\* Rem Model 12 22\* Savage 24 22/410\* Sgf 15 22\* Win 37A 20ga\* Stevens 94 410\* Marlin 22\* Rem Targetmaster 41 22\* Sgf 67F 410\* Ranger 35 22\* JC Higgins 103.18 22\* Stevens 12ga\* Savage 99E 243\* Knight SxS 12ga\* Stevens 59A 410\* FN Single Shot 22\* H&R 1908 20ga\* Revelation R310C\* Westernfield 10-SD247A 16ga\* R Jones SxS 12ga w/ Damascus Barrels, Fine Line Engraving & Original Leather Case\* A Richard SxS 12ga\* Stevens 94 410\* Rem Nylon 66\* S&W 22LR 61-3\* Rem Targetmaster 41 22\* Rem 870 20ga\* Stevens 59A 410\* Rem Wingmaster 870 20ga\* Piepers 22\* Savage 720 16ga\* 2- Rem 241 22\* JC Higgins 10.25 410\* Win 67 22\* Stevens 67E 20ga\* Norinco SKS 7.62x39\* Rem Wingmaster 870 20ga\* Win 370 28ga\* Rem Wingmaster 870mag 12ga\* Ruger Ranch Rifle 223\* Norinco SKS

7.62x39\* Savage 24 Series 22LR/410\* Marlin 917V 17HMR\* 2- Universal M1 Carbine\* Win 37 20ga\* Rem Fieldmaster 121 22\* 2- Moss 500E 410\* Savage 410\* Rem 1148 410\* Rem Wingmaster 870 410\* Rem 1148 28ga\* Stevens 22 Favorite\* Win 100 308\* Win 67A 22\* Sears & Roebuck 21 20ga\* Stevens 22 Crack Shot #26\* Rem Sportsman 58 20ga\* Rem 870LW 20ga LW\* Iver Johnson 410\* Win 67 22\* Stevens 94 16ga\* 3- Savage 99 300savage\* Savage Model 62\* SKS 7.62x39mm\* Marlin Model 60 22\* Mossberg Model 380 22\* Sgf Trapdoor 45-70\* Win 1906 10ga Lever Action 2- Rem 33 22\* Black Powder Rifles\* **50+ Pistols** Colt 1903 32\* Colt 1908 25cal\* Colt 1991 Govt 45th President\* S&W 500\* Colt SAA Ned Buntline 45Long Colt\* Cimarron Wyatt Earp\* 3-Desert Eagle 44mag\* Colt Lightning 38\* Colt WWII Pacific Theater\* S&W 17-4 22\* Colt Trooper MKIII 357mag\* Browning Buckmark 22\* Colt Commander 45Auto\* S&W Performance Center 460\* Colt SAA45\* Taurus Raging Bull 41mag\* Browning Medallion 22\* Browning Model 1911 22 100th Ann.\* FMJ Model DD 45/410\* FMJ Model D 45/410\* S&W SD40VE\* Ruger MarkII 22LR\* Ruger MarkIII 50th Ann. 22LR\* Davis D22 22cal O/U Derringer\* AMT Backup 380cal\* North American Arms 41 22mag\* Cobra 32 Auto\* Kimber Micro 9\* Jimenez JA25 25auto\* S&W 642- 2 38S&W\* Llama 380auto\* Heritage Rough Rider 22\* Baretta Model 96 40S&W\* S&W SW40VE 40cal\* Ruger Mark IV Hunter\* S&W SW9VE 9mm\* EAA Witness 10mm\* Walther PPK/S 380cal\* Trump Glock 19\* RG Model RG26 25cal\* Colt Official Police 38\* Hi-Standard Sport King 22\* S&W 406 40S&W\* Phoenix 25auto\* Bersa Thunder 380\* Heritage Rough Rider 22\* Plus More **AMMO & Misc\*** Mags\* Mounts & Bases\* Gun Cases\* Throwing Axes\* Knives\* **Scopes-** Nikon, Leupold, Weaver, Intensity, Tasco, Mueller, Bushnell & More!\* Black Powder\* **Ammo-** 400 Rounds Win 55grain 556, 750+ Rounds 410, 500S&W, 7.62x39, 25auto, 28ga, 30-30, 45gap, 32auto, 380auto, 50 Action Express, 12ga, 20ga, 16ga, 300win Mag, 12ga Turkey, 38special, 40S&W, 357mag, 38 Long Colt, 220 Swift, 9mm, 45auto, 270, 22, 410 #5, 410 #8, 30Carbine, 300 Savage, 5.56, 7mm, 270win, 20ga Turkey, 308, 22ccl LR, 410 8shot, 17HMR, Browning 22LR, 280, 222, 30-06, 22 Hollow Point, 223, 40, 357mag, 12ga & 20ga Slugs & More! **Tools, Lawn & Garden\*** Gravely T2352 Zero Turn Mower\* Fowlplay Skeeet Thrower\* Briggs & Stratton EXL800 Generator\* Screen Door\* Tool Chest\* JD 265 Riding Mower\* Yard Machine Riding Mower\* Chains\* Lumber- Old Rough Sawm Reclaimed Oak, Walnut & Cedar\* Electric Fence Posts & Wire\* Weed eaters\* Chainsaws\* Push Mowers\* Troybilt Tiller\* Bench\* Cordless Drills\* Sawzall\* Log Chains\* Battery Chargers\* Ramps\* Plastic Pallets\* Concrete Forms\* Ladders\* Lots Of Hardware & Building Supplies\* Tools\* Perfection Oil Heater\* Power Tools\* **Antiques, Collectibles, Glassware & Household\*** Railroad Collection \* Pedal Tractor, Wagon & Firetrucks\* Cast Iron Banks\* 215Lb Anvil\* Zippo Lighters\* Die Cast Tractors\* Bull Horns\* Neon Signs\* Noritake 9place China Set\* 7- Flat Screen TV's\* Surround Sound\* Doll House\* Stewmware\* Cast Iron Bell\* Guitar\* Native American Statues\* Sad Irons\* Primitives- Tools, Washboards, Utensils, Torches, Scythe, Oil Cans, Sifters, Colanders, Sheller, Air Pump, Traps, Level & More\* African American Memorabilia\* Home Decor\* Pictures\* Plants\* Lamps\* Wreaths\* Rugs\* Luggage\* Silver Plated Items\* Beer Steins\* Canisters\* Bottles & Jars\* Dept Of Ag Scale\* Stetson Hats\* Graniteware\* Tupperware\* Lanterns\* Antique Thermometers\* Antique Tins- Folgers, Johnny Walker, Quaker, Prince Albert, Ritz, etc Plus More!

Auction Conducted by:  
**Glenworth**  
Auction Service & Realty  
Glen Yutzy, Auctioneer/Broker



Licensed in Missouri & Arkansas

Phone: (417) 767-4345 • Fax: (417) 767-4222

Not responsible for accidents. Announcements made day of sale take precedence over any printed matter. Terms: CASH or CHECK Visit our website for more information at [www.glenworth.com](http://www.glenworth.com) Lunch available



# ANNUAL MEMORIAL DAY AUCTION

**Monday, May 31, 2021 • 9:00 a.m.**

**The Moffat Auction Center • 467 County Road 604, Linn, MO**

**Directions:** From Linn, take Hwy. 50 west 1 ½ mi. to Co. Rd. 604, turn left & go 1 mile to building on right, or from Jefferson City, take Hwy. 50 east approx. 18 mi. & turn right on Co. Rd. 604.

## ANTIQUES, FURNITURE, TOYS & COLLECTIBLES

Ornate hall bench w/ lift seat carved Griffins; Ornate buffet w/ lions head; Fancy burl buffet; 10 Drawer tall high boy w/ Queen Anne legs; Iron Bed; Oak bookcase; Thomasville dresser; Oriental buffet; Lots of Garden Iron décor; Pyrex; Fireking; Graniteware; C/I implement seats; Concrete yard ornaments and pots; Glassware; Large salt glazed ovoid crock; 5 gal. salt glazed jug; Other crocks & jugs; Evans pottery pcs.; Assayers scales; Longaberger baskets; Buck knife display; Niloak bookends; Pink & green depression glass; Ornate shaving mirror; Tins; Wood Pepsi box; Wood adv. Boxes; Landshark Lager wood sign; Metal adv. signs; Wood butter mold; Old light fixtures; #12 Wagner skillet; 8 & 6 Griswold skillets; Rabbit mold; Knives; Bottles & jars; Quilts; Galvanized items; Ceramic Christmas tree; Egg scale; Baskets; Coleman lantern; Oil lamps; Old toys; Metal toy trucks; C/I toys; Silver & silver plate; Household from estates; Large amount not listed. Photos updated regularly.

## FARM TOY COLLECTION

Over 40 pcs, mostly John Deere, including tractors and implements. See [www.moffa](http://www.moffa)

## GUNS – SELL AT 11:30 A.M.

Ruger P85 9MM; Ruger 45 Blackhawk; Husqvarna 220 Swift Bolt w/ Scope; Winchester Mod. 1200 12 ga. Pump; Colt Python 357; 45 C Anino; Ruger 1022 Rifle Bearcat w/ Scope SYN Stock; High Standard 22 ca.; Ruger 44 Black Powder Stainless; 36 ca. Black Powder revolver.

## EQUIPMENT – SELLS AT 12:00 NOON

NH 451 Sickle Mower 3pt.; Ford Post Hole Digger 3pt.; 3-14

Plow 3pt; 1 Bottom Plow 3pt; 6 ft. 3pt. Disc; Ford 501 Sickle Mower; NI Hay Rake w/Dolly Wheel; Kinze 450c Grain Cart; 10 Shank Chisel Plow Pull Type; AC 4 Bottom Plow 3pt.; 6 ft. 3 pt. Brush Hog; Heston pt.; Howse 6ft. Rear Tiller 3 pt.; Land Pride Brush Hog 7ft. 3pt. RCR 1884; 5ft. 3pt. Brush Hog; 6ft 3pt Rock Rake; 6ft. 3pt. Blades; 3 Bottom Plow 3pt.; PTO Sprayer; Pull Type Plow 2-14 Trip; 10 ft. wheel disk.

## SKID STEER ATTACHMENTS

New Stout 72-3 Grapple Bucket; New Stout 72-4 Grapple Bucket; New Stout 84-6 Grapple Bucket; New Pallet Forks; New Round Bale Spikes.

## TRUCK & TRAILERS

1995 Chevy 2500 2WD diesel, 117000 miles; auto, clean good truck; 24 ft. Tandem Dual Trailer Gooseneck; 18ft. Gooseneck Trailer; 14,000 lb. Bumper Hitch Trailer; 20 ft. Heavy Duty Equipment Trailer, Tandem Dual Pintle Hitch; 16 ft. Bumper Hitch Trailer; 16 ft. Gooseneck Trailer; 10ft. Trailer; 8ft. Trailer.

## LIVESTOCK EQUIPMENT

3 Creep Feeders; 3 New Big Bale Feeders; 3 Metal Nesting Boxes; Fence Posts; Wooden Posts and Gates; T-Posts; Wire; Water Tanks; Feeders.

## LAWN & GARDEN-UTV

John Deere HPX Gator; FX Mark Zero Turn Mower 60" Cut; John Deere 240S Mower 42" w/Bagger - Kawasaki Engine 110 hrs. Like New; Tillers; Push Mowers

## TRACTORS

MF 1042 4WD w/loader; Farmall 4; Ford 8N; MF T020; David Brown 990 WF 3pt.; Case Vac.14 WF Eagle Hitch; AC C w/ Woods LS9 Belly Mower; MM V; MM Z.

## MACHINERY CONSIGNMENTS ACCEPTED

NOTE: THIS WILL BE A LARGE AUCTION. PLEASE COME OUT AND SEE US. WE WILL RUN TWO AUCTION RINGS. THE MACHINERY STARTS SELLING AT 12:00 P.M. NOON OUTSIDE. THE WEBSITE WILL BE UPDATED REGULARLY UNTIL AUCTION TIME. PLEASE SEE [WWW.MOFFATAUCTION.COM](http://WWW.MOFFATAUCTION.COM) FOR COMPLETE LISTING & PHOTOS. RICK TERMS: CASH OR GOOD CHECK WITH PROPER IDENTIFICATION. ALL SALES ARE FINAL. EVERYTHING SELLS AS IS, WHERE IS. PROPER IDENTIFICATION IS NECESSARY TO OBTAIN A BUYER'S NUMBER. ANNOUNCEMENTS DAY OF SALE SUPERSEDE ALL PRINTED MATERIAL. FOOD ON GROUNDS.

## RICHARD MOFFAT AUCTION SERVICE

708 E. McCarty St., Jefferson City MO 65101 – Business Office



**Auctioneer:**  
**Richard Moffat**  
573-761-4293  
Jefferson City, MO

**The Moffat Center**  
573-897-4004  
Linn, MO  
[www.moffatauction.com](http://www.moffatauction.com)

**Auctioneer:**  
**Matt Michelson**  
573-680-6188  
Jefferson City, MO

# Public Auction



Hansel  
Morris

20821 Hwy65 • Lincoln Mo. 65338

Directions: South of Lincoln on 65 hwy. in former manufactured home lot.  
Inventory reduction Hansel IS NOT going anywhere, we will sell the following at public Auction on:

**MEMORIAL DAY - Monday May 31st 1:00pm 2021**



- 1963 Chevy C-20 flatbed pickup totally redone. New 350 motor, 4 speed manual transmission, home built flatbed. Chrome spoke wheels with B.F. Goodrich radial T/A's (Must See) **Consigned by Pat Harris**
- 2003 Jaguar X type 82k miles Leather & loaded
- 1997 Buick LaSabre 4 door sedan **Consigned by Adam Scott**
- 1997 Challenger travel trailer 30-ft. Fifth Wheel Gooseneck with slide out.  
**TRUCKS, HEAVY EQUIPMENT, TOOLS, PARTS & MISC.**
- 1996 Peterbilt Model 379-N14 Cummins "Red Top", 110,000 miles on complete in frame overhaul 3 speed transmission, new clutch, 16 ft Heil Dump Bed. Good tires.AC works good
- 2007 CH-613 "All Mack" 695,000 miles, new clutch and rebuilt transmission less than 25,000 miles ago. Wet kit.AC works good.9 speed transmission
- 1992 Ford L-8000 Ford diesel motor, 6 speed transmission 18 foot hydraulic lift flatbed. Pintle hitch, new tires.AC works good.190,000 miles
- 950 Cat Wheel loader with cab, 4-yard bucket, automatic 4 speed transmission
- 1992 Monnon tri-axle full frame end dump truck with 18' foot dump bed
- 2017 HaulAss 25-ton tandem axle lowboy pulled

- less than 10,000 miles
- 1992 Razo 22' frameless end dump, good tires, full liner, manual roll back tarp **Consigned by Jr Mehrens**
- 2012 Polaris Ranger (Side by side) 6,400 miles (No Reserve)
- 1967 1600 Loadstar V-8 gas grain-bed (\$3,500 reserve)
- 1966 F-750 Ford V-8 gas grain-bed (\$3,500 reserve) **Consigned by Ron Metcalfe**
- 1927 Model T pickup Museum Quality (Formerly by Forrest Gruhn) MUST SEE
- 1948 Ford 2 door delivery panel sedan, 350 Chevy, automatic, mustang II front end.
- 1978 Charger jet boat & trailer, 460 Ford engine Less than 2 hours on break in. Complete lake ready.
- 1950 Chevy one ton panel 6 cyl. 4 spd. new overhaul.
- Hobart "Ironman 210" wire welder w/gas bottle, 2 - 22ton "Big Red" axel floor jack w/air return, 3-ton hyd. floor jack, 30-ton bottle jack, CEN-TECH 6/12v battery charger / booster, 3500 watt 6.5hp. gas generator, lot axle nut sockets & bearing drivers, lot misc. tools
- Curt 500-pound receiver hitch "Carry All" with cover, Lot oak timbers,
- Many More Items Too Numerous to Mention**



"Hansel Morris" Auctioneer Note: We are extremely honored to Conduct this Auction, everything has been meticulously maintained and well cared for "Opertunity is Knocking" (There is NO reserves on Hansel's items) Concessions provided by the "Benton County Good Ole Gals"



# JOHNSON AUCTION SERVICE

"Third Generation Family Tradition since 1942"

Russell "Rusty" Johnson (660) 221-4067 • Phillip Yoder (660) 723-3389

For Full Listing,  
Pictures  
and Details  
auctionzip.com  
(ID# 20300)

# ESTATE AUCTION

**SATURDAY, JUNE 5 @ 10:00 A.M.**

**Directions:** SALEM, MO - From Salem take Hwy. 19 south 1.5 miles. Sale site on right. Watch for signs.

## HOUSEHOLD - FURNITURE - COLLECTIBLES - TOOLS - LAWN - MISC. ITEMS

4x4 w/Front End Loader, Great Tractor  
 Old Metal Wheels - 3pt 6' HD Box Blade - Bench Grinder  
 Kioti Tractor LK3054XS 224 Hours, Diesel  
 Hitachi CW 40 Scroll Saw - Sears 12" Wood Lathe  
 Craftsman Planer - 6mc 15 AMP 10" Compound Miter  
 RPJL Furnace - Delta Shop Master Scroll Saw  
 Shop Lights & Bulbs - Yard Swing - Deep Freezer Chest  
 2 Craftsman Stackable Toolboxes  
 Reese Hitch Hauler for Medical Chair  
 Wood Clamps - C-clamps - 100 lb. Propanes Cylinder  
 136 Husqvarna Chain Saw - Bench Sander - Table Saw  
 Power Kraft 295 Stick Welder - Fishing Boxes - Gas Jugs  
 Walkers - Baby Cradle - Fence Charger - Dremil  
 Lawn Mower Tires - 5' 3pt. Disc  
 Several Lots of Canning Jars - 16' Flat Box Trailer  
 2 Chair Hair Dryer - Hydraulic Chair - Large Safe, Combination  
 V Shampoo Chair - 2-Drawer File Cabinet  
 Misc. Hair Curlers, Clippers, Perm Rods, Curling Irons, Ect., Some  
 Colors, Combs & Brushes  
 Old 3-Drawer Chest - Misc. Pillows - China Cabinet  
 Matching Couch & Chair w/Ottoman  
 Big Man Lift Chair, Nearly New - Infrared Heater  
 Small Lift Chair, Good Condition  
 Rocking Chair w/Foot Stool - 2 Matching Curio Cabinets  
 Pink Child's Rocking Chair w/Matching Potty Chair  
 Antique Highchair, Approx. 100 Yrs. Old  
 Chest of Drawers, Maple - Gun Case - Bookcase  
 Oil Lamps - Matching China Cabinet & Table w/6 Chairs  
 Old Glass-Top Plant Stand - Small TV Stand Cabinet  
 Kitchen Table w/4 Chairs - Microwave - Hexagon End Table  
 Bedroom Set; Queen Bed, Dresser w/Mirror, 4-Drawer Chest  
 Round Side Table - Cedar Chest - 4-Drawer File Case  
 Computer Corner Desk - Chest of Drawers  
 Bedroom Set; Queen Bed, Chest, Dresser w/Mirror, Bookcase  
 Headboard  
 Bookcase w/Bottom Storage - 2, 8-Day Clocks  
 3 Oil Lamps - Bird Cage - Lot Pictures  
 Birdhouse Teapot - Lot Knick-Knacks  
 3 Decorative Lighthouses - Wooden Shelves  
 1 Lot Depression Refrigerator Dishes w/Lids  
 Set of Snowman Dishes, 12 Place Setting, w/Extra Pieces  
 Set of Flatware w/Red Handles, Christmas Dishes  
 Lot Pink, Amber, Green & Clear Glasses, Depression Dishes, Bowls,  
 Plates, Fancy Bowls, Carnival Glass, Cream & Sugar Sets, S&P  
 Sets  
 Lot Ruby Stemmed Sherbet Dishes, Stemmed Glasses  
 Lot Misc. Antique Glasses  
 1 Set Strawberry Canisters - Several Old Fruit Jars  
 Set Silver Leaf Glasses, Set Silver Leaf Juice Glass & Set  
 Silver Leaf Stemmed Glasses, Matching, 50 Yrs. Old  
 Lot Kobe Glasses, 2 Sizes - Decorative Serving Bowl  
 Anniversary Clock, Needs Work - Misc. Pictures  
 Wall Sconces - Flower Arrangements  
 3 Iridescent Glass Covered Dishes, Old  
 Coke Bottles - 2 Wooden Coke Cases

Avon Beer Steins - Avon Figurines  
 Glass Candle Holders - Wooden Candle Holder  
 Lot Vinyl Records, 33 1/3, 78, 45  
 Lot Children 45 Records - Child Record Player  
 Lot of 8-Track Tapes - Lot CDs - Lot Cassette Tapes  
 CD Player - Cassette Player/Recorder  
 Lot Music Books - Sheet Music  
 Lot Purses, Totes, Makeup Bags  
 Set Taco Bell Chihuahua Dogs - Lot Table Cloths  
 101 Dalmatians Snow Globes - Lot Odd Towels  
 Antique Sewing Machine, Wooden Container  
 Lot Newspaper, Mark McGuire, Sammy Sosa, Homerun Battle  
 Newspaper w/Monica Lewinsky Inquest  
 Lot Magazines JFK Assassination Coverage  
 Set of Milk Glass Sherbet Dishes w/Red Scottie Dog  
 Inside  
 Large Crock Bowl - Lot Odd Dishes Decor  
 Green Mason Jars - Lot Coffee Cups - Spice Tins  
 Lot Metal Tractor Toys; Ford, John Deere, Caterpillar  
 Wall Pictures Hand Painted  
 Lot Asst. Children & Adult Books  
 Set of World Books - Lot Classic Encyclopedia Books  
 Lot Christmas Decor - 2 Old Train Sets  
 Junior Projector, Old - View Master w/Discs, Very Old  
 Lot Cameras, 35mm Plus Lenses - Small Video Camera  
 Vacuum - 2 Wooden Butter Molds - Crock Churn  
 Lot Old Dolls, Stuffed Animals - Lot Picture Frames  
 Lot Match Books - Lot Old Photographs  
 Mushroom Mouse Baby Night Lamp  
 Old School Desk - Lot Old Ladies Hats - Man's Hat  
 Lot Caps - King Size Bedding/Sheet - Drapes  
 Lot Cookbooks - Lot Crock Pots - Large Coffee Maker  
 Small 2-Cup Coffee Pot - Old Eye Glasses  
 Spoon Bowl - Hen-in-Nest, Amber Glass  
 Old Paper Fans - Coin Counter Bank - Area Rugs  
 Tennis Rackets - Badminton Racket - Old Croquet Set  
 Games - Puzzles - Plastic Bowls - Old Quilts  
 Patio Table w/4 Chairs & Umbrella  
 4 Patio Chairs - Old Umbrella - BBQ Grill, Large  
 Small Crock - Medium Crock  
 Snowman Candle Holder - Wooden Bread Bowl  
 Lot Little Golden Books - Garfield Knick-Knacks  
 Old Glass Butter Dish - Small Lamp Wall Sconces  
 Swan Glass Candy Dish - Old Fruit Jars - 3 Nail Kegs  
 Lance Berkman Bobble Head - Santa Figurine  
 Lot Sewing Stuff & Material - Lot Makeup Brushes Etc.

Candles - 2 Electric Fans - Old Catchers Mitt  
 Ball Bat - Cedar Jewelry Box - Lot Baskets  
 Magazine Holder - Picture w/Curved Glass Cover  
 Wii Game & Extra Games - Whiskey Decanters  
 Scooter Bigman, 3 Years Old, Plus Carrier for Back of Pickup  
 2 Bed Sets, Gray/Aqua w/Drapes, Queen Size Gray/Maroon &  
 Drapes  
 Set of Queen Sheets - Pillows - Electric Razor  
 Crock Jug - Lot Tins - Lots of Holiday Decor  
 Canister Set - Blender - Toaster - Waffle Iron - Pots & Pans  
 Utensils - Baking Pans - Metal Phone Stand  
 Walkers, Aluminum - 2 Walkers w/4-Wheels - Ribbons - Flags  
 Small Desk - Lunch Boxes, Insulated - Wrapping Paper  
 2 Full Boxes Unopened Mens Disposable Underwear  
 1 Bag Misc. Disposable Mens Underwear  
 Cast Iron Figurine Pieces - Brass Pieces - Yard Sticks  
 Lot Old Coke Trays - Cookie Cutters - Whiskey Barrel End Table  
 Silverware - Bowls - Kitchen Utensils  
 Upright Deep Freeze, Not Frost Free - Radios  
 Weather Radio NOAA - Wire - Staple Gun  
 Blue Enamel 7qt. Cooker - Large Mirror - 6ft. Brush Hog - 5ft Disk  
 Husqvarna Riding Mower - Cub Cadet Rider Mower  
 Scooter, Needs Batteries - Refrigerator  
 Yard Tools - Flower Pots - Hanging Pots  
 Lawn Mower Dump Trailer - Old Smokers - Christmas Decor  
 Junk Mower - Clothes Hangers - Fruit Jars  
 10 Full Sheets of Plywood - Styrofoam Sheets  
 Several Boards of Cedar, Walnut & Dried Cherry Lumber

**AUCTIONEER'S  
 NOTE:**  
 Several items  
 not listed.  
 Great sale you  
 don't want to  
 miss!  
 See you  
 there. - Tom



### ESTATE OF: THE LATE JAMES (JOE) CAMDEN

ANNOUNCEMENTS AT AUCTION TAKE PRECEDENCE OVER PRINTED MATTER

# WULFF AUCTION

Auctioneers:

Col. Tom Wulff - Col. David Wulff

498 Hwy. B, Salem, MO 65560 • 573-729-8476

Clerk: Tracy Strange Cashier: Nancy Inman

See Wulff Auctions at [www.thesalemnewsonline.com/auctions](http://www.thesalemnewsonline.com/auctions)

TERMS: CASH OR  
 APPROVED CHECK -  
 I.D. REQUIRED  
 NOTHING REMOVED  
 UNTIL SETTLED FOR

Licensed  
 Appraisals



RAIN OR SHINE  
 OWNER & AUCTION  
 PERSONNEL NOT  
 RESPONSIBLE FOR  
 ACCIDENTS AT  
 SALE SITE

# LARRY DRENON AUCTION

**1870 WEST TIMBER RIDGE DR • SEDALIA, MO**

As John Kelly has sold his home, the following will be sold at auction, located west on 16th Street (Y Hwy) to Timber Ridge Drive (southwest side of Sedalia), then follow sale signs to sale on:

**SATURDAY, JUNE 5TH STARTING AT 10 AM**

**VERY NICE FURNITURE**

Dining room table, glass top, 6 chairs  
 Side buffet matches dining table  
 46" Round table w/ 2 12" leaves  
 Double reclining leather sofa w/mid console  
 Sofa and love seat, khaki color  
 3 pc Livingroom Armoire  
 Round glass top coffee table & 2 matching lamp tables  
 2 Overstuffed arm Livingroom chairs  
 Queen size Drexel bed, dresser, chest, 2 nightstands  
 King size bedroom suite, leather and wood head and foot boards,

dresser, Chest, 2 nightstands  
 Antique roll top desk  
 Dk blue upholstered sofa, loveseat, chair and ottoman  
 Dresser, with carving • Corner hutch  
 3 Section desk w/display shelves  
 Glass front bookshelf cabinet  
**HOUSEHOLD and ANTIQUES**  
 Kenmore SxS refrigerator, white  
 Sony 40" Bravia tv  
 Several nice area rugs, red/blue 63x94, with matching throw rug, Maroon/beige 60x90, Teal/Maroon/beige 92" square, others  
 Cast iron kettle and cauldron pots  
 4 drawer metal filing cabinet  
 Antique telephones, 1 brass, 1 wooden  
 Antique hickory bottom chair  
 Blue Marble table lamps, other lamps  
 Reel to reel recorder • Card table and chairs  
 Lifetime 6' fold-up table  
 7' Christmas tree and décor  
 25+ Bing & Grondahl Christmas plates  
 Unique elephant floor lamp  
 Flamingo and parrots décor  
 2 Canister dehumidifiers  
**RECREATION**  
 2 Scuba skin suits, 2 bottles, bouyancy control vest, accessories  
 Windshield, fits Harley Heritage Soft Ride  
 2 Soft Ride Beam Technology touring bicycles

Schwinn Suburban bicycle  
 Bike helmets, 2 panniers, bike racks, hitches, mounts, other biking accessories  
 Set of golf clubs and bag • 2 Hammocks  
 Fire Fite Game Sport Compound bow, 40-70 adj. pull  
 Some fishing tackle  
**SCULPTURE and ARTWORK**  
 Authentic Mark Hopkins Bronze elephant #370 of 750, using Lost Wax Bronze casting  
 Unique Handmade American Indian wall décor, with genuine porcupine quill breastplate and authentic fox headware  
 Charles Frace framed print, Hawk  
**VINTAGE ITEMS, ARROWHEADS**  
 Old boots and spurs used by a Colorado guide  
 2 Vintage Derby hats • Old Army stretcher  
 Several arrowheads, bird points, scrapers, etc  
 Antique ice cream table, 4 metal chairs  
 Old locks and keys  
**PORCH AND PATIO**  
 Venetian woman water fountain  
 Lifetime picnic table • Patio storage bench  
 Wicker patio table and two chairs  
 2 Metal patio chairs • Rubbermaid deck cabinet  
**MISCELLANEOUS**  
 Leather briefcases and satchels  
 Wheelchair • 10" Wheelchair ramp  
**PICKUP**  
 2001 Toyota Tundra SR5, 4 door Club Cab, I-force V8 Auto, bed liner, 165k miles, one owner

**Terms:** Cash, approved check, debit/credit card (convenience fee applied). Nothing to be removed until settled for. Not responsible for accidents. Statements made day of sale take precedence over printed material. Lunch served



**JOHN KELLY AND BEVERLY RICE**

## Larry DRENON AUCTION



Larry 660-596-8515 Laramie 660-221-4386  
 Lacey 660-723-1104 Cooper 660-723-2221

Office: 660-723-6188  
 www.DrenonAuction.com

**Auctioneer's Note:** You don't want to miss this large sale offering something for everyone. This is not a complete list, and we are sure there will be more treasures uncovered by sale day. Mr. Steinkuhler was over ninety when he passed away; a lot of items have been in the family for many, many years. The guns, collectibles and primitives will be sold under a tent, starting with the guns at 9 o'clock. We will be running two rings, possibly three throughout the day. Lunch served by Xi Lambda Chi  
**For pictures, go to www.DrenonAuction.com**

# Wheeler Livestock Auction, Inc.

## Special Stock Cow Sale

### Osceola, MO



## SAT., MAY 29, 2021 • 6:00 P.M.

### Expecting 1,000 head of Bred Cows & Cow/Calf Pairs

#### Vestlane Farms-

- 1 Blk Ang bull, 18 mos., SAV Final Answer & Werner War party breeding. 1 Blk Sim bull, 13 mos., Revival breeding. Good bulls w/ genetics.

#### A & E Nogal-

- 3 Gelv/Bal bulls, 19 mos., gentle bulls, all shots, ready to turn out.

#### Double D Farms-

- 10 Reg Char bulls, 15-17 mos. 1,500 lbs., good bulls, best of breeding, good bone & gentle.

#### Simon Bros. LLC-

- Complete Dispersal-25 Fancy Ang cows, 2-3 yrs., 1,200 lbs. w/ Blk & Bwf clvs. 250 lbs., 25 Fancy Ang cows, 4-6 yrs., 1,350 lbs., w/ Blk & Bwf clvs. 250 lbs., 25 Blk & Bwf cows, 7-BM., 1,300 lbs., /w Blk & Bwf clvs. 250 lbs., 10 Blk & Bwf cows, 3-7 yrs., heavy breed or babies by sale day. All of the pairs are worked, knife cut, Pyramid 5, Blk Leg. Cows are open. This is an outstanding set of cows, all home raised & many years of breeding. Selling all cows and going to row crops. 45 Blk & Bwf cows, 5-7 yrs., 1,350 lbs., Bred to Ang or Herf bull start calving Aug. 20th.

#### Jones Ranch-

- 42 Fancy Ang hfrs., 2 yrs., 1,050 lbs., w/ 200 lb. Ang clvs. Cows & calves worked, tagged to match & open.

#### S Bar C Herefords-

- 20 PB Horn Herf cows, 3 yrs., 1,100 lbs., bred to Ang bull, calve Aug 20th. Good gentle

cows, all raised 1st calf & bred back. Cows have been dehorned and had all shots.

#### Hefley Farm Dispersal-

- 30 Fancy Tigerstripe hfrs., 1,050 lbs., exposed to Red Ang bulls since April 10th. 2 Red Ang bulls, 2 yrs., 1,300 lbs., CE bulls. 60 Tigerstripe cows, 5 yrs., w/ 60 clvs., blk clvs sired by Lucas Sim Ang bulls. All cows & calves worked, cows exposed back to same bulls since April 15th.

#### Crowley Farm Dispersal - Sold Farm-

- 15 Red Ang cows, 5 yrs., 1,250 lbs., w/ Char X clvs. 350 lbs., 24 Red Ang cows, 5 yrs., 1,250 lbs., bred to Char bull, calve Aug. 20th.

#### Fairley Legal Farms-

- 57 Blk Brangus cows, 3 yrs., 1,100 lbs., w/ Bwf clvs. 300 lbs., cows bred back to same Herf. bulls. These cows are all sisters, gentle & good.

#### Campbell Farms-

- 41 Blk cows, 3-5 yrs., 1,250 lbs., bred 3rd to Blk bulls. Nice set of young cows.

#### Gibson Farm-

- Dispersal of Fall Calvers-85 Fancy Ang & Bwf cows, 3-5 yrs., 1,250 lbs., bred to outstanding Ang bulls. 40 cows will calve Aug 15th for 30 days, 45 cows will calve Sept 15th for 30 days. Nice gentle set of cows that will all calve in 60 days.

#### 5M Ranch-

- 30 Fancy Ang cows, 5-BM., 1,300 lbs., These cows will all be SydGen genetics and bred to

Horn Herf bull, calve Sept. 1st.

#### Howe Farms-

- 40 Blk Bfmstr X cows, 4-7 yrs., 1,200 lbs., 20 Red Bfmstr X cows, 4-7 yrs., 1,200 lbs., 20 mix cows 7-BM., All cows home raised, bred 2nd & 3rd to Blk Gelv bulls.

#### Roy Hensley-

- 15 Red cows, 5-6 yrs., 1,250 lbs., bred to Red Ang bull 2nd & 3rd. All cows gentle & home raised.

#### S & B Farm-

- 40 Red Ang cows, 3-5 yrs., 1,250 lbs., 40 Blk & Bwf cows, 3-5 yrs., 1,250 lbs., The above 80 cows bred to good bulls & had all shots.

#### Dave Jackson-

- 8 Blk & Red cows, 4-7 yrs., 1,200 lbs., bred 2nd. 1 Blk bull, 4 yrs., 1,400 lbs., good calf raising cows.

#### Williams Farm-

- 10 Red & Char X cows, 3-7 yrs., 1,150 lbs., w/ 10 clvs. 250 lbs., 20 Blk cows, 3-7 yrs., w/ 20 clvs. 250 lbs.,

#### Sheldon Farms-

- 13 Blk cows, 4-6 yrs., 1,200 lbs., w/ 12 Blk clvs. 400 lbs., cows bred back.

#### TNT Farm-

- 21 Blk & Bwf X cows, 4-6 yrs., 1,100 lbs., w/ 17 clvs. up to 300 lbs., Cows bred back to good bulls.

### Special Feeder Calf Sales - June 3rd & 17th • June Cow Sale - June 26th, 2021

# Wheeler Livestock Auction, Inc.

Osceola, MO • 685 SE 13 Hwy., PO Box 560 • BARN 417-646-8102

Byron Wheeler-417-777-0897 • Skyler Fisher-417-298-9051 • Les Tennis-417-466-8786

Red Whistance 417-276-7909 • Zach Lightfoot 417-399-5053

Burleigh Wheeler-417-840-6561 • Darwin Hearting-417-296-1029

Kevin Wade-660-492-3279 • Tim Sherrer 573-855-1951

Office Manager: Weston Shelby, 417-298-1316

Bid online on CattleUSA • [www.wheelerlivestock.com](http://www.wheelerlivestock.com)

Like us on Facebook-Wheeler Livestock Auction

## WHEELER

### LIVESTOCK

### AUCTION INC.



**TRAILER HOUSE:** 14x70, metal roof, outside needs work, must be moved, interior good condition. \$2,500. 417-532-4042. Lebanon.

**EXPERIENCED LOGGERS WANTED:** 417-733-2987. Phillipsburg.

**LINCOLN LINCWELDER:** 224 portable welder, works well. \$1,200 with cables. 573-729-0272. Salem.

**3 FEMALE SCHNAUZER PUPPIES:** \$500 each. Vet checked, UTD shots, wormed, \$500 each. 573-453-5083. Salem.

**1989 CROWN VICTORIA:** 63,000 original miles, 302 automatic. \$2,500 Firm. 417-926-1614. Mtn. Grove.

**1994 LINCOLN TOWN CAR HEARSE:** 90,000 original miles. \$2,500. 417-926-1614. Mtn. Grove.

**TRI-COLOR FC AKC BEAGLE PUPPIES:** DOB 3-21-21. \$400. 573-627-2309. Sullivan.

**JOHN DEERE 2755 DIESEL TRACTOR:** Cab & cold air, 75hp with JD 620 loader. \$19,950. 573-765-4406. Richland.

# BUFFALO LIVESTOCK MARKET LLC



**276 Hwy 32 West  
Buffalo, Missouri  
May 22<sup>th</sup>, 2021  
Receipts: 816 Head  
Feeder Steady \$5 Higher.**

**REPRESENTATIVE STEERS**

300-400 @ 173.00 to 202.50  
400-500 @ 160.00 to 172.50  
500-600 @ 157.00 to 168.50  
600-700 @ 145.00 to 159.00  
700-800 @ 135.00 to 145.50

**REPRESENTATIVE HEIFERS**

300-400 @ 148.00 to 168.00  
400-500 @ 134.00 to 158.00  
500-600 @ 128.00 to 143.00  
600-700 @ 131.00 to 137.00  
700-800 @ 112.00 to 118.00  
800-900 @ pk \$115

**FEEDER BULLS**

400-500 @ 150.00 to 165.00  
500-600 @ 130.00 to 153.00  
600-700 @ 125.00 to 136.00

**BRED COWS**

775.00 to 1100.00

**COW CALF PAIRS**

1000.00 to 1275.00

**SLAUGHTER COWS**

Big Fleishy 65.00 to 70.00  
Med Boning Flesh 55.00 to 65.00  
Thin Flesh 50.00 to 57.00

**SLAUGHTER BULLS**

High Dressing 97.00 to 101.00  
Med Dressing 90.00 to 96.00  
Low Dressing 80.00 to 96.00

**NO SALE MAY 29 MEMORIAL WEEKEND**

**MON-WED MARKET REPORT**

Listen to KJEL 103.7FM • Lebanon or KY00 99FM • Bolivar

**VIEW OUR SALES AT CATTLEUSA.COM**

**CALL FOR TRUCKING OR ON-FARM VISIT**

**Lyle Caselman • Owner-Manager  
417-345-7876 • mobile 417-533-2944  
Leon Caselman • Owner  
417-345-4514 • mobile • 417-588-6185**



**MID MISSOURI STOCKYARDS**

**REGULAR SALE EVERY THURSDAY 11AM**

WATCH OUR WEEKLY SALE IN REAL TIME ON [DVAUCTION.COM](http://DVAUCTION.COM)

For Farm Visits, Market Updates, or Trucking  
Call Zach Cox 417-777-1320  
Dan Romine 573-578-4939

**Competitive Buyers!  
Competitive Commission!  
Competitive Market!**

Barn: 417-532-9292   
I-44 • Exit 123 "just outside of Lebanon"  
17505 Route 66, Phillipsburg, MO 65722  
For weekly market updates, visit us at [www.midmostockyards.com](http://www.midmostockyards.com)

**WANTED TO BUY:** John Deere Diesel Tractor in need of repair. Call 573-768-0068. Sedgewickville.

**DARDEN PROFESSIONAL TIMBER HARVESTING, BUYING STANDING TIMER:** Great prices, improve wildlife habitat and improve forest health. State Certified & Fully Insured! 573-247-4808 or 573-739-1122. Salem.


**SEARS ROEBUCK HEAVY DUTY TABLE SAW:** In good condition. \$300. 417-532-8048. Lebanon.

**CASE 480C DIESEL BACKHOE LOADER:** \$9,200. 573-765-4406. Richland.

**IHC HOUGH 65 DIESEL ARTICULATING 4 WHEEL DRIVE LOADER:** \$9,750. 573-765-4406. Richland.

**SITREX 12 WHEEL BIFOLD RAKE.** \$5,250. 573-765-4406. Richland.

**BEAUTIFULLY DESIGNED HOME THORNBROOK SUBDIVISION**



**Open Houses:  
Thurs., May 27th | 4:30 - 5:30 pm  
& June 3rd | 12:00 - 1:00 pm**

**4701 Garden Brook Ct.,  
Columbia, MO**

- 3,330 +/- Sq. Ft. | 3 or 4 Bedroom, 3 Bath
- Expansive Master Suite With Updated Bathroom
- Quartz Countertops In Spacious Eat-In Kitchen
- Living Room With Stone Hearth & Gas Fireplace
- Family Room & Upper Level Bonus Room Addition | 3 Car Garage


**Words Can't Describe This Property!!**  
Perfect For A Family or Retiree Desiring A Home Near Southwest Columbia Amenities

**Online Bidding Ends:  
Thursday, June 10th at 12:30 pm**

**Check It Out & Bid At  
[AtterberrySells.com](http://AtterberrySells.com)**

**Make Sure To Check Out The Personal Property Auction Ending June 15th!!**

Atterberry Auction & Realty Company  
Your Real Estate At Auction Specialists  
Email: [contactus@atterberryauction.com](mailto:contactus@atterberryauction.com)



**www.atterberryauction.com**  
573-474-9295  
MarkNet ALLIANCE

**PUBLIC AUCTION**  
**SATURDAY, MAY 29, 10:00 A.M.**

**Location:** From West Plains, Mo. Travel west on Hwy. K approx. 11 miles to KK, then right approx. 7 miles to Sawmill Road at McKee Ranch entry, then 1/2 mile to road at mill then approx. 1 mile to McKee Village gate, then down hill into village. Legal: Section 5, Township 23 North, Range 11 West, Ozark County, Mo. Watch for directional arrows.

**McKee Village - 3 Tracts**  
**NORTH FORK RIVER LOTS**

**AT PUBLIC AUCTION:** Perfect for new cabins ranging from 3/4 acre. **TRACT 1** - .73 acres. **TRACT 2** - 1.02 acres. **TRACT 3** - 1.28 acres with additional river access. McKee Village is a special place known for its breath-taking scenery, wildlife and pleasures of the 'river' in all seasons! Private gated community. Blue ribbon trout area. Excellent building sites. Outstanding river with breath-taking views! Survey plot @garysexton.com. **TERMS:** 10% down escrow day of auction, balance due upon closing. Have all financial arrangements made prior to auction. Starting bid \$25,000 selling choice lot! **INSPECTION:** Drive by welcome Sundays May 9, 16, 23, 1:00-4:00 p.m. For information contact Gary Sexton 417-255-7001. **CONDITIONS:** Highest bids to be submitted to owner for acceptance or rejection. Any fair or reasonable offer will be contracted. **AUCTIONEERS NOTE:** Lots sell precisely at 10 a.m. at location: Don't be late! Thanks for attending.

**J.M.T. PROPERTY MANAGEMENT, LLC**

*Gary Sexton*  
 Since 1978  
**Auctioneers, LLC**



www.garysexton.com  
 417-255-7001 • gary@garysexton.com  
 1028 Porter Wagoner • West Plains, MO

AR Broker #PB0043890  
 AR License #1568  
 Tyler G. Sexton  
 417-372-0124  
 SE Missouri Rep

Todd Hornback  
 Oregon Co. Rep

Gene Summers  
 Ozark Co. Rep

All announcements made day of the sale supersede any written material.  
 Not responsible for lost or stolen property or accidents.

Is Your Log Home **UGLY?**  
 Starting To Look  
**Professional Staining & Repair**  
 (Log Homes & Wood Siding)

*Call*  
**Pine Ridge Rustic**  
 Log Home Building Supplies **573-729-7226**  
 www.pineridgerustic.com

**2001 BUICK CENTURY:** Good tires, low mileage. \$3,200. 573-308-7781. Rolla.

**2001 GRAND CHEROKEE JEEP:** 176,000 Miles. 573-346-7586. Montreal.

**CRAFTSMAN RIDING MOWER:** 46" cut, new battery. \$600. 573-308-7781. Rolla.

**NEW HOLLAND 1411 DISKBINE:** with roller. \$8,950. 573-765-4406. Richland.

**BORDER COLLIE PUPS:** First shots, dewormed, only males. \$125. Call mornings. 573-759-2347. Dixon.

**JOHN DEERE 566 ROUND BALER:** Monitor, kicker. \$5,200. 573-765-4406. Richland.

**JOHN DEERE 2955 DIESEL TRACTOR:** Cab & cold air. 85hp, 1,700 hrs, with new loader. \$29,000. 573-765-4406. Richland.

**OLDER 36 FT DAMON MOTORHOME:** Lovingly kept, 17,160 actual miles, must see to believe. Priced for quick sale. 417-284-7365. Tecumseh.

**JOHN DEERE 467 ROUND BALER:** Monitor, kicker, net wrap. 4x6. \$10,850. 573-765-4406. Richland

**IHC 766 DIESEL TRACTOR:** 80 hp with Koyker KS loader \$7,750. 573-765-4406. Richland.

**JOHN DEERE 4030 DIESEL TRACTOR:** Cab & cold air, with JD loader. \$19,750. 573-765-4406. Richland.

**Salem Livestock Auction**  
 Hwy. 32 Salem, MO • 573-729-8880  
 Over 40 Years in the Livestock Business

**Pre VAC Sale**  
 Friday June 4th • 12 pm  
 Cattle must be at least 45 day weaned and had at least one round of shots.

**No Sale May 31st**  
 in observance of Memorial Day

**Luke Peterson • 417-259-0036**  
**Shawn Chadwell • 417-830-0209**  
**Bryce Lauderdale • 417-255-5124**  
 Field Representatives  
 Wright & Surrounding Counties  
 We Appreciate Your Business!

**Cattle Sale Every Monday at 12**  
 Feeder calves to sell at 12, butcher cows & stock cows following

**All Consignments Welcome Up Until Sale**  
 Allen Thompson Renee Lauderdale  
 417-932-4097 417-926-2682  
 Chuck Thompson Brandon Barton  
 417-257-5610 417-259-1597  
 Terms of Sale: Cash or Approved Check!

**Fly Free with AFC.**

**AFC**  
 ALTSID® FLY CONTROL  
 PRODUCTS

**Kropf Feeds**  
 Located in the Heart of the Amish Mennonite Community!  
**417-345-8600**  
 19 Prairie Lane, Buffalo

**NEW HOLLAND 855 ROUND BALER:** New air bag, very good condition, has all the teeth, field ready. \$3,875. 314-724-7154. Leslie.

**VERMEER 4 BASKET HYD FOLD TEDDER:** \$4,700. 573-765-4406. Richland.

**M & W 15ft. HYD. FOLD BRUSH CUTTER:** \$3,750. 573-765-4406. Richland.

**IHC 1086 DIESEL TRACTOR:** Cab & cold air, 130 hp. \$12,500. 573-765-4406. Richland.

**FAINTING GOATS! LOOKING FOR A FARM YARD PET?:** Pick from 6 little bucklings, all 100% pure bred. Check [www.greenacresvillage.com](http://www.greenacresvillage.com) or call 573-216-7796. Lake of the Ozarks.

**1996 FLEETWOOD RV WILDERNESS:** 26 ft camper with slide-out, gooseneck setup or 4<sup>th</sup> wheel, good condition, no leaks. \$3,500. 573-646-3351. Brand

**ROUTE 66 – THE MOTHER ROAD BOOK:** by Michael Wallis. Hardback, 243 pages, \$12.50. 417-532-2045. (leave message). Lebanon.

**Larry Heisel Rentals**  
LARGE or SMALL...  
**We Rent!**  
Crawler Loaders • Excavators • Backhoes  
Call Larry!  
**573-779-1500**  
www.larryheiselequipment.com  
We Deliver!  
Rental Available in 636 or 573 area code

**JOHN DEERE 4230 DIESEL TRACTOR:** Cab & cold air, 100 hp. \$13,500. 573-765-4406. Richland.

**MISSOURI OZARKS BOOKS:** Missouri Orchids, \$3.75. Weird Missouri Book, a travel guide to Missouri's Local Legends and best kept secrets, 253 pages, HB, \$12.50. 417-532-2045. (leave message) Lebanon.

**POOL TABLES:** Installations, moves, recovers, repairs, accessories, etc. 573-646-1700.

**WEATHERED BARN WOOD SIDING:** 10" wide. 573-729-7226. [www.pineridgerustic.com](http://www.pineridgerustic.com)

**FERTRELL ORGANIC FERTILIZER:** Free Catalog. 315-796-4370.

**BUYING STANDING CEDAR:** Minimum 6-in diameter. 417-531-0403.

**LOG SIDING:** 2X8 Pine/Western Cedar [www.pineridgerustic.com](http://www.pineridgerustic.com) 573-729-7226.

**USED MOBILE HOMES:** Call David at VILLA HOMES IN ROLLA 573-578-8072. Rolla.

**BUYING MOBILE HOMES:** Call David at VILLA HOMES IN ROLLA 573-578-8072. Rolla.

**WANTED TO BUY ANTIQUE CARS:** Convertible, Corvettes, unrestored, motors, parts considered. 870-324-1154.

**TINY HOMES** – You gotta see these!! In Ashland. [amegamobilehomes.com](http://amegamobilehomes.com) 573-657-2176.

**THEY ARE HERE** Tiny homes cute, cute, cute [columbiadiscountnhomes.com](http://columbiadiscountnhomes.com)

**FEMALE ENGLISH CREAM GOLDEN RETRIEVER:** 2 years old, spayed, AKC, very friendly, calm. \$700 adoption fee. 630-687-0705. Falcon.



## Horse Sale

1st Wednesday of each month  
**June 2<sup>nd</sup>, 2021**

Tack will start @ 6:00pm then  
Horses to follow  
Expecting Several Head of Horses.

# MARKET IS REALLY GOOD!

All Consignments Welcome  
Buyers From All Across the U.S.

All Classes of Horses

For more information or consignments, please call:

Kip: (573) 368-9402

Isaac (417) 327-2355

Denver: (417) 399-2701

Steve: (417) 894-1070

Trucking Available

Restaurant Open @ 5:00 pm

*"Celebrating our 62<sup>nd</sup> year"*

## Roberts Bros. Sale Barn

1416 E. Hwy. 32 – Bolivar, MO

(417) 326-5815

Like Us On Facebook!

**I BUY.....used mobile homes.:** Call or text 573-338-6250 or email [GregS.CDH@outlook.com](mailto:GregS.CDH@outlook.com)

**REGISTERED HEREFORD & ANGUS BULLS:** Home raised, Some Show-Me Select Qualified. 573-701-7828. Belgrade.

**WANTED, TIMBER TO LOG ON SHARES:** Honest, reliable, references. 417-533-4607, 417-664-1195.

**FIREARMS:** Professional Repairs and Restorations. Baron's Gunsmithing. 573-363-5801, Camdenton.

## FARM AUCTION

Saturday May 29, 2021

10:00AM

Russell & Judith Randolph

21248 Clinton Rd • Lebanon, MO

Directions: From Lebanon Take Hwy 5 South Approx 6 Miles Then Left On Clinton Rd/ County Rd 5-424 To Auction. Watch For Signs.



**Machinery & Farm Equipment** \* JD 5100E Tractor w/ 540M Loader, Spike, Left Hand Reverse, 345hrs & 3 1/2 Yr Warranty \* JD 6420 4x4 Tractor w/ 640 Ldr, Left Hand Reverse & 3479hrs \* JD 5303 4x4 Tractor w/ Loader, Bucket & 1089hrs \* JD 468 QA \* Net Wrap Baler w/ 4500Bales \* 5 Rolls Of New Netwrap- Selling Separate \* 2010 Ford F350 Flatbed Dually V8 4x4 Truck w/ 72,000Miles \* Tristar 18' Gooseneck Flatbed Trailer w/ 5' Dovetail & Ramps \* 1995 24' Gooseneck Stock Trailer \* 36' Gooseneck Bale Trailer \* 6x10' Bumper Trailer w/ Folding Tail Gate- New \* 2000 Coose 14' Bumper Stock Trailer \* Woods 380 \* 15' Bushog w/ 540RPM & Chains \* JD 926 Moco Flail Discbine- 1 owner \* 4 Basket Enross Tedder \* JD 709 3pt Bushog \* 3pt Bale Spike \* Hay Spear Fork \* Fertilizer Buggy w/ Honda Motor \* 6' Pull Type Disc \* Ogden Hayrunner 8 Wheel Rake- Like New \* 5' Grapple Bucket \* Big Ox 3pt HD Tilt Blade \* Ford 2 Bottom Plow \* 3pt 6' Box Blade \* Danuser Post Hole Digger \* 3pt Bale Unroller \* New Calf Creeper Feeder \* 100gal Fuel Tank \* Overhead Feed Bin \* **Tools, Lawn & Garden** \* 500gal Propane Tank \* 220 Lincoln Welder \* Honda Generator \* Stihl 180 Chainsaw- Like New \* Drawbars \* Husqvarna Chainsaw \* Power Washer \* Hyd Jack \* Toplinks \* Battery Charger \* Stihl Gas Powered String Trimmer w/ Blade \* Log Chains \* 220v Twin Motor Air Compressor \* Shop Vice \* Assorted Hand Tools \* **270+ Head Of Cattle & 5 Bulls \* 294 Round Bales Net Wrapped Hay**

[www.glenworth.com](http://www.glenworth.com)

Auction Conducted by:  
**Glenworth**  
Auction Service & Realty (417) 767-4345  
Glen Yutz, Auctioneer/Broker



# Callaway Livestock Center, Inc.

Kingdom City, MO

Watch live or bid online thru D.V. Auctions  
www.CallawayLivestock.com

## SPECIAL COW SALE THURSDAY NIGHT JUNE 3<sup>rd</sup>, 2021 AT 6:00PM

Estimating 600 to 700 hd of Bred Cows,  
Cow/Calf Pairs & Breeding Bulls.

### EARLY CONSIGNMENTS

#### Merial

**68** Outstanding Angus 1st Calf Hfrs. Hfrs are all full sisters, very gentle, excellent milkers with fancy February Blk Headed Red Angus A-I Sired Calves by side. Calves tagged to match mothers. No Bulls with them yet.

#### Deeken

**10** Fancy Blk 1st Calf Hfrs with fancy Blk Calves by side. Hfrs are big gentle and good udders. Calves tagged to match their mothers.

#### Northcutt

**25** Fancy Blk or Blwf 1st Calf Hfrs. Hfrs is working close with a fancy set of February Blk Calves by side, not with Bulls yet.

#### Schulte

**7** Fancy Red Angus 1st Calf Hfrs with fancy Blk Calves by side. Ear tagged to match. Very gentle.

#### Zumbhel

**25** Fancy Red Angus with fancy Red Angus Calves by side. Cows will be with their 1st Calf. 5 with their 2nd Calf, 3 with 3rd Calf. 12 Cows will be 9 and 10 yrs old.

**25** Fancy Red Angus Cows. 3 to 5 yrs. old with Fancy Red Angus Calves by side. Very gentle, ear tagged to match mothers, not with bulls.

**20** Fancy Red Angus Cows. 4 to 7 yrs. old with 300 lb. Red Angus Calves by side. Cows running back with Red Angus Bulls, Calves tagged to match mothers.

#### Morgan Dispersal

**55** Blk or Blwf Cows. 3 to 8 yrs. old with Fancy Blk calves by side. Gentle, hot wire broke. Been on rotational grazing system. Calves all worked, ready to turn out.

**7** Angus Cows with Fancy Angus calves by side. Tagged to match, 3 to 7 yrs. old.

**50** Fancy Blk or Blwf Cows. Cows be 3 to 5 yrs. old, 2nd or 3rd period.

**50** Fancy Blk or Blwf Cows. Bred to production tested Angus Bulls. Due to calve September 1st, Cows be 7-10 yrs. old.

**20** Blk or Red fall calving Cows. 5 to 8 yrs. old. Bred to Sim Angus Bulls. Due September 1, ready to turn out.

**35** Fancy Blk or Blwf Cows. Cows be 3 to 4 yrs. old. Fancy Blk calves by side. Calves ear tagged to match mothers, good udders.

**1** 1/2 Saler 1/2 Angus 15 mo. old Bull, easy calver.

Several other cows expected by sale night.

This ad was made 2 weeks in advance Don't miss this sale. Many more expected by sale day. All bulls sell at the start of the sale at 6:00pm.

For more information contact:  
Jack Harrison 573-999-7197 • John P. Harrison 573-220-1482  
Roger Temmen 573-680-4538 • Glenn Stagman 573-619-8495  
Claude Niameyer 573-470-1017 • Justin Oberling 217-440-7724  
Wayne McCluggage 573-473-6314 • Chad Nickelson 573-631-1627  
Glen Stegman 573-619-8945 • Lynn Crouch 417-399-4148

**CALLAWAY LIVESTOCK CENTER INC.**  
**573-642-7486**

**CUSTOM SAW MILLING:** Lebanon. 417-533-4607, 417-664-1195.

**WANTED, TIMBER TO LOG ON SHARES:** Honest, reliable, references. 417-533-4607, 417-664-1195.

**CAR DOLLY:** Heavy duty, adjustable width ramps, good condition. \$900. 417-753-2747. Rogersville.

**TREES OF MISSOURI FIELD GUIDE BOOK:** 148 pages, \$4.50. 417-532-2045 (leave message and phone number). Lebanon.



**CLASSIC EDGE**  
TITANIUM HDX  
Eliminate high heating bills with Central Boiler's NEW, certified Classic Edge Titanium HDX OUTDOOR WOOD FURNACE. Call today!

**Outdoor Wood Furnace**  
CentralBoiler.com

The Classic Edge 360, 560 and 760 HDX are U.S. EPA Certified

Yarbrough Equipment Sales & Services, Inc.  
9776 E. State Hwy 00 • Strafford, MO  
417-736-2303 • 1-866-286-6901 • www.yarbeq.com

**SEEKING PLUMBER:** with experience in New Construction & Residential service plumbing. Must have experience with all types of plumbing repairs and the ability to trouble-shoot and repair many different plumbing problems. We are looking for someone that is outgoing, self-motivated, reliable and has quality ethics. Valid driver license with good driving record required. We offer excellent pay and long-term employment to the right candidate. Paid vacation, paid holidays and health insurance. Immediate employment available. Salary is based on experience. Please call. 573-348-2093.

**SIMPLICITY GARDEN TILLER:** Rear tine, \$475. Lebanon.

**THOMAS KINCAID BOOKS:** \$2 each. 417-532-6561. Phillipsburg.

**OZARK EMPIRE FAIR-SPRINGFIELD 60TH ANNIVERSARY COOK BOOK:** 1937-1996, 144 pages. Prize winning recipes from the fair. \$9.50. 417-532-2045, (leave message) Lebanon.

**VINTAGE POCKET KNIFE COLLECTION:** 1950's + 60's, 26 models. \$150. 573-764-3517. Call in pm. Gerald.

**BIRD CAGE:** on stand with tray and toys. \$65. 636-239-4124. Washington.

**BLACK AGUS BULLS:** from 12 to 18 months. 417-932-4026. Summersville.

**CAMPER WINDOWS FOR SALE:** \$200 for all. Call for sizes 417-664-8823. Conway

**TINY TINY TINY** Homes Homes Homes – Call Marla 573-657-7040 chateauhomes.net

**MISSOURI HISTORICAL BOOK:** published by State Historical Society of Missouri. \$6.50. 417-532-2045 leave message. Lebanon.

**WANTED:** Hay to cut, within 50 miles of Salem. Buy standing in field or cut in shares. Green Meadow Farm. 573-247-8055. Salem.

## CALUS LOGGING

**20 YEARS EXPERIENCE**

**Buying Standing Timber**  
Walnut & Oak

**Joe Calus, Owner**  
**CERTIFIED 417-926-4606 • MTN. GROVE**

**SMALL SQUARE BALES OF STRAW:** 417-932-4026. Summersville.

**ROUND BALES HAY:** Net wrapped. \$29.50. George's Tack, Saddle & Feed. 573-346-7866. Camdenton.

**METAL CAGE:** with tray, 54" long, 3 feet wide, 45" high. \$80. 636-239-4124. Washington.

**LOOKING TO BUY:** Diesel 450C John Deere HiLift. 636-232-7480. Desoto.

## URBANA STOCKYARDS SMALL ANIMAL AUCTION

**THURSDAY, MAY 27 @ 5:00PM**  
122 S. COLLEGE STREET • URBANA, MO • 417-993-5989

- Once Again We Will Start Outside At 5Pm And Move Inside With Poultry, Fowl And Small Contained Animals Then We Will Move To All Hoof Animals.
- Accepting Consignments All Day Thursday Beginning At 8Am.
- For Pictures Check Out Urbana Stockyards Facebook Page For Any Updates!

---

For more information or consignments contact:  
Joe Webster: 573-280-9586 • Amy Knight: 417-594-1061  
Matt Whitney: 417-588-0594 • Brayden Whitney: 573-317-6340  
Jeff Knight (Auctioneer): 417-594-0050

**GARAGE DOOR:** 7 ft high, 19 ft. wide, white insulated and hardware. \$175. 636-239-4124. Washington.

**CUSTOM HARVESTING OF YOUR HAY:** 4X5 round or small square bales. Green Meadow Farm. 573-247-8055. Salem.

**MURRAY RIDING MOWER:** Good tires, deck, blades, 5-speed, needs motor. \$150 or gun trade. 573-364-7465. Rolla.

**HEAVY DUTY CROWBAR:** For Hauling cars and trucks. \$100 or trade. 573-724-2822. Bismarck

**FOR SALE:** 880 Oliver diesel and F30 Farmall. \$2,000 each. 417-349-2908. Cabool.

**ROUTE 66 DINING 7 LODGING GUIDE:** 183 pages, \$5.00. 417-532-2045. (leave message) Lebanon.

**TRUSTED & THOROUGH SERVICE**

Repairs • Rebuilds  
Cast Iron & Steel Welding  
Engines • Transmissions  
Electrical • Hydraulics  
PTO & Drivelines

**VALLEY SHOP • 660-458-6747**  
38745 Molasses Mill Rd, Latham

**VERNON 808 8MM MOVIE EDITOR:** With box and 8mm splicer. Like new, original owner. \$65. 417-844-4319. Springfield.

**RADIATOR/FAN SCHROUD:** Fits international model tractors models 200, 230, 240. \$125. 636-239-2695. Washington.

**KITCHEN FAUCET MOEN:** Single lever, sprayer, new cartridge. \$45 obo. 636-239-2695. Washington.

**VEHICLE FOUR WHEEL DOLLY:** 1000 lbs max weight. \$75 firm. 417-457-1023. Raymondville.

**BOOTS:** Hip waders, rubber and leather boots. Men's 11, Women's 7, some insulated. \$15-\$45 obo. 636-239-2695. Washington.

**House Hunting?**  
Call Vanessa Today!

**Why Choose Me?**

- Proven Marketing Strategies
- Competitive Commission Rates
- User-friendly online features for your convenience

*Vanessa Ruble*



**GERMAN SHEPHERD PUPPIES:** Black and Red. Seven males. 573-378-4447. Barnett.

**LIONEL TRAIN SET:** Steam engine, tender, caboose and other car, track and transformer. \$195. 573-364-7465. Rolla.

**OFFICIAL TRACTOR OF TOUGH™**



**NEW MAHINDRA TRACTORS**

4540 2WD & LDR 41HP	IN STOCK
2638 4WD & LDR 38HP	IN STOCK
1626 4WD & LDR 26HP	IN STOCK

**USED TRACTORS**

MF GC1723 W/LDR 22HP	10,000
ZETOR 6320 W/LDR 66HP	8,500

**USED ROUND BALERS**

MF 2946A 4X6 MESH	27,500
MF 1745 4X5	8,500
VERMEER 505SI MESH	7,500
GEHL 2480 4X5	6,500
JD 435 4X6 MESH	6,500
JD 375 5X5	3,500
HESSTON 560 5X6	3,000
NH 850 5X5	1,500
VERMEER 605D 5X6	750

**USED MOWER/CONDITIONERS**

HESSTON 1345 12FT	9,500
-------------------	-------

**USED CUTTERS**

LANDPRIDE 15FT	5,500
----------------	-------

**USED MISC.**

HAYBUSTER 107 DRILL	12,500
FRONTIER BALE PROCESSOR	8,500
GEHL 418 8WHL RAKE	1,750
VERMEER 8WHL RAKE	1,750
M&W 10WHL RAKE	1,750
BUSH HOG POST HOLE DIGGER	1,200

**Marshfield Machinery Inc.**  
222 E. Madison • Marshfield, MO 65706  
417-859-2117 • www.marshfieldmachinery.com

MahindraUSA.com © 2020 Mahindra USA Inc.

**Mahindra Rise.**

Marshfield Machinery Inc.  
222 E. Madison • Marshfield, MO 65706  
417-859-2117  
www.marshfieldmachinery.com

**2 MOUNTAIN FEIST:** 2 females, white/black spotted, Mullins bloodlines, \$100 each. 573-578-9705. Brinktown.

**LOOKING FOR FALL 2021 DEER HUNTING LEASE:** Please call 314+713-8519.

**FOR SALE:** Colman Military Lantern. \$100. Serious inquires only. 573-205-9401. Gerald.

**1989 CROWN VICTORIA:** 63,000 original miles, 302 automatic. \$2,500 Firm. 417-926-1614. Mtn. Grove.

# WE'RE NOT JUST IN PRINT

Visit the newly re-designed

# WWW.MYWEEKLYTRADER.COM

**CHEVY CERTIFIED SERVICE**  
SPRING TIRE EVENT

**\$200 MAIL-IN REBATE!**  
ON A SET OF FOUR TIRES FROM BRIDGESTONE, CONTINENTAL, GOODYEAR, HAWKINS, AND PHRELLY WHEN PURCHASED WITH A GM DEBIT/POWER CARD

**LOWE CHEVROLET**  
"We're Easy to Deal With!"  
View our Inventory



**WEEKLY TRADER MAGAZINE**

Serving Central Missouri in 32 counties!

**417-532-9131**  
100 Commercial Street  
Lebanon, MO 65536  
myweeklytrader

- Auctions
- Auto
- Tractors
- Real Estate
- ATV's / Motorcycles
- Building Supplies
- Miscellaneous
- E-Editions

## This week's ads

### THIS WEEK'S CLASSIFIEDS

**PL TABLES:**  
Installations, moves, covers, repairs, accessories, etc. 573-646-1700.

weathered BARN WOOD SIDING: 8' & 10' wide. 573-729-7226. www.pineridge rustic.com

VEHICLES: 1927-1991 www.gobheartland.com 417-545-6354.

HULTE SX 318: 18 ft slash cutter, bought new 19, still under warranty, 17,750/obo. Norwood 417-349-0084.

WANTED STANDING TIMBER: Butler Logging, 417-448-9323.

ROD AND REELS: fishing season is coming, \$5 and up. Conway, 417-589-8200.

1989 NISSAN TRUCK: Runs but needs clutch and body work. \$675. Lebanon, 573-453-4100.

SAVAGE MODEL NO. 270WN: with Leupold scope, \$375. Remington 5300, obo. 417-679-4355.

STOCK TRAILER: 1983 Goose, goose-neck; 24' new floor. Four new 10 y truck tires. \$2450. Lebanon (417)664-2198.

QUALITY REPLACEMENT COWS: COW/CALF PAIRS, BREED HEIFERS AND BREEDING BULLS, 781-222-2222

BITTERSWEET COUNTRY

### FEATURED ADVERTISER

**Sakelaris Ford Lincoln, Where the Customer is Always #1!**  
Come See Us at Our NEW LOCATION!

ALL-NEW Super Clean, Safe Facility at 1621 Martin Springs Drive in Rolla, MO

**Get COVID-19 Relief On A New Ford Vehicle!**

BUILT TO LEND A HAND

**NEW VEHICLE PURCHASES**  
3 MONTHS' DEFERRED | 3 MONTHS PAID\* | 6 MONTHS RELIEF FOR PEACE OF MIND  
(Qualified Buyers Financed with Ford Credit)

ON SELECT NEW 2019, 2020 & 2021 FORD VEHICLES.

Limited Supply... Limited Time... Don't Miss Out On This Opportunity!

**0% APR for 72 mos.\***  
Ford Credit Financing for Qualified Buyers PLUS: Defer Three Payments\* on Select New 2020 Ford Vehicles

ALSO Available on Select New Ford Vehicles: \$500 Bonus Cash of MSRP\*

**0% APR for 84 mos.\***  
Ford Credit Financing for Qualified Buyers PLUS: Defer Three Payments\* on Select New 2019 Ford Vehicles

**1 WE ARE KW**  
KELLERWILLIAMS.

We are the NUMBER ONE real estate company in the United States!

**AMANDA HOUGH**  
C:417-664-1113  
O:417-883-4900  
609 W. Elm • Suite B  
Lebanon, MO

Each office is independently owned & operated.

### MORE PRINT ADS

**MAKING FRIENDS AGAINST CANCER**

**Starnes Auto LLC**  
23115 Rt. 66  
Lebanon, MO 65536  
417-718-2270  
417-383-3199

**THE ULTIMATE WOOD HEAT**

**ALL OF OUR FOREST RIVER VIKINGS**

**2020 FORD RANGER** \$4,800  
**2003 GMC ENVOY SUT** \$4,350  
**2008 CHEVY MALIBU** \$2,500

**2020 Viking 1750Q** \$14,911  
**2020 Viking 1758M**

**2019 Harley Davidson**

**2019 Harley Davidson**

**2019 Harley Davidson**

✓ Diagnostic  
✓ Auto Body & Paint Repair  
✓ Glass Repair  
✓ Used Car Sales & More

**GET STARTED**

**Starnes**  
Auto Body 417-588-3159

**MAKING FRIENDS AGAINST CANCER**

**October 22, 2020**  
View this issue  
Browse other issues

Classifieds at your fingertips

Every display ad is available online

View ads from local businesses

View the entire magazine online

**WEEKLY TRADER MAGAZINE**

417-532-9131  
www.myweeklytrader.com

**NOW TAKING ORDERS:** for strawberries. Rissler. 573-392-1857. Barnett.

**1908 ALCOHOL BURNERS:** \$100. Serious inquires only. 573-205-9401. Gerald.

**FOUR HOUSE TRAILER RIMS FOR SALE:** \$5 each. 573-308-5884. Rolla.

**3 FEMALE SCHNAUZER PUPPIES:** \$500 each. Vet checked, UTD shots, wormed, \$500 each. 573-453-5083. Salem.

**ANTIQUe MILK GLASS BOTTLES:** \$100 for all. Serious inquires only. 573-205-9401. Gerald.

**TWO KITCHEN TABLES AND CHAIRS:** \$100. 573-724-2822. Bismarck

**WISHING WEEDS AWAY?**

Try our full line of herbicides and pesticides to get your fields back in business.

Remedy<sup>®</sup> Ultra HERBICIDE    GrazonNext<sup>®</sup> HL HERBICIDE

**Laclede County Seed & Fertilizer**

20756 State Hwy W (W. City Route 66) • Lebanon, MO  
(417)532-7898 www.lacledecountyseed.com

**JOHN DEERE STX46 RIDING MOWER:** 46" cut, triple blade, Kohler motor, needs PTO wire and belts. \$195. 573-364-7465. Rolla.

**THE BITTERSWEET OZARKS AT A GLANCE BOOK:** By Ellen Grace Massey of Lebanon, hardback, 219 pages, \$12.50. 417-532-2045 (leave message and phone number. Lebanon.

**A-FRAME TINY HOUSE/SHED:** 6ft.x8ft., new floor, \$995. 573-759-7143. Vienna

**FORD PARTS AND BODIES:** Call for information. 573-858-3238. Salem.

**HESSTON 5530 3x4 ROUND BAILER:** \$2,800 obo. 417-588-2622. Lebanon.

**Team Electrical & Plumbing**

*"The Professionals you can count on"*

Electrical • Solar Power • Plumbing • Lighting Installation

100% Satisfaction Guaranteed	Fully Licensed & Insured	\$100 Estimates with upfront pricing
------------------------------	--------------------------	--------------------------------------

For the best quality of work every time...  
**Give "Team" a call today!**

417-349-6200 • www.teamelectricalplumbing.com

**5409 DITCH MOWER:** 417-664-3425. \$3,500. Lebanon.

**LARGE MEAT SMOKER:** \$100. 573-724-2822. Bismarck

**12 GAUGE PUMP SHOTGUN & 3 BOXES SHELLS:** \$400. 417-532-4108. Lebanon.

★ **MEMORIAL DAY** ★  
**MOWER SALE**



**SAVE \$300**  
ON X330 AND X350 LAWN TRACTORS



**0% FINANCING**  
ON RESIDENTIAL ZERO TURNS

 **JOHN DEERE** | *Heritage* **TRACTOR**

Restrictions Apply. See dealer for details. Offer ends 6/1/21.

**127 ACRES M/L:** ½ forest, hardwoods, re-conditioned 2-story farmhouse, 2.5 car garage, wood shed, free standing wood stove, fire place with insert, 3 ponds, survey, new plumbing, verified electrical, new roof. 1 hour to Springfield, 1 hour to lakes, 1 hour to Branson. Dallas County. \$599,999. [Toga4520@gmail.com](mailto:Toga4520@gmail.com).

**NEW HOLLAND S69:** Small square baler, New Holland 1002 bale wagon, small square bale loader, all \$2,500. 417-770-1158. Tunas.

**ROSSI 410 LEVER ACTION RIO-GRANDE:** Good condition. \$450. 417-588-7438. Lebanon.

**HUSQVARNA RIDING LAWNMOWER FOR SALE:** YTH 23V48, \$1,000. 573-821-6071. Freeburg.

**LINCOLN LINCWELDER:** 224 portable welder, works well. \$1,200 with cables. 573-729-0272. Salem.

**NEW HOLLAND 1411 DISKBINE:** with roller. \$8,950. 573-765-4406. Richland.

**EXPERIENCED LOGGERS WANTED:** 417-733-2987. Phillipsburg.

**2001 GRAND CHEROKEE JEEP:** 176,000 Miles. 573-346-7586. Montreal.

**JOHN DEERE 2955 DIESEL TRACTOR:** Cab & cold air. 85hp, 1,700 hrs, with new loader. \$29,000. 573-765-4406. Richland.

**MAKING THE IMPOSSIBLE Possible**

For a fast and easy way to find out if we have coverage in your area, check out our website at [splashin.net](http://splashin.net)

**NOW SERVING ST. ROBERT!**

Honoring our military with no long term commitment!  
No Suprises • Flat Rates

Serving the Tri-County Area.  
*Veteran & Locally Owned*  
**splashin.net**

**Splash Wireless Internet LLC**  
573-460-2720 • 219 S. Walnut St. • Richland

**STARNES IS NOW HIRING PAINTERS AND GLASS INSTALLERS**

**Starnes Auto Body**

588-7939 • 588-3159  
22115 RT. 66 • LEBANON, MO

**2008 YAHAMA FIBERGLASS RIVER BOAT & TRAILER:** 20 ft., new condition, used only 5 hours, 25 horse, asking \$11,500. 870-736-5340. Ash Flat.

**FOR SALE:** .223 Tulammo \$15.00 box, Aguila 22 ammo \$9.00 box 22 Ammo Junior \$8.00 box all 22 brass cases. 417-322-5470. Falcon.

**TRAILER HOUSE:** 14x70, metal roof, outside needs work, must be moved, interior good condition. \$2,500. 417-532-4042. Lebanon.

**JOHN DEERE 2755 DIESEL TRACTOR:** Cab & cold air, 75hp with JD 620 loader. \$19,950. 573-765-4406. Richland.

**WANTED TO BUY:** John Deere Diesel Tractor in need of repair. Call 573-768-0068. Sedgewickville.

**JOHN DEERE 566 ROUND BALER:** Monitor, kicker. \$5,200. 573-765-4406. Richland.

**Fishing Season is here!**  
 We have a great supply of: Berkley Flicker Shads  
 Charlie Brewers  
 Slider Grubs  
 Swimming Minnows  
 & Jig Heads!

**Craig's OUTDOOR Sports**

9435 HWY N. Suite A (417) 926-0255  
 Mtn. Grove, MO craigsoutdoorsports.com

Mon-Fri 9am-5pm • Sat 9am-Noon

**THE MOST COMPLETE LINE-UP IN THE INDUSTRY**  
 Cutting widths from 36" to 104"



**HUSTLER**

For Outstanding Products & Service  
**AGRI-ENTERPRISES**

1-1/2 Miles South Of Licking, MO On Hwy 63  
 573-674-2203 • 1-800-653-7152  
 www.agri-enterprises.com

**NEW HOLLAND 855 ROUND BALER:**  
 New air bag, very good condition, has all the teeth, field ready. \$3,875. 314-724-7154. Leslie.

**DARDEN PROFESSIONAL TIMBER HARVESTING, BUYING STANDING TIMER:** Great prices, improve wildlife habitat and improve forest health. State Certified & Fully Insured! 573-247-4808 or 573-739-1122. Salem.

**CASE 480C DIESEL BACKHOE LOADER:** \$9,200. 573-765-4406. Richland.

**1972 220 ALLIS CHALMERS:** With Koyker loader, Koyker backhoe, very good condition. 417-679-2276 or 417-989-0338. Gainesville.

**1994 LINCOLN TOWN CAR HEARSE:** 90,000 original miles. \$2,500. 417-926-1614. Mtn. Grove.

**TRI-COLOR FC AKC BEAGLE PUPPIES:** DOB 3-21-21. \$400. 573-627-2309. Sullivan.

**OLDER 36 FT DAMON MOTORHOME:** Lovingly kept, 17,160 actual miles, must see to believe. Priced for quick sale. 417-284-7365. Tecumseh.

**SEARS ROEBUCK HEAVY DUTY TABLE SAW:** In good condition. \$300. 417-532-8048. Lebanon.

**FAINTING GOATS! LOOKING FOR A FARM YARD PET?:** Pick from 6 little bucklings, all 100% pure bred. Check [www.greenacresvillage.com](http://www.greenacresvillage.com) or call 573-216-7796. Lake of the Ozarks.

**BORDER COLLIE PUPS:** First shots, dewormed, only males. \$125. Call mornings. 573-759-2347. Dixon.

**JOHN DEERE 467 ROUND BALER:** Monitor, kicker, net wrap. 4x6. \$10,850. 573-765-4406. Richland

**JOHN DEERE 4230 DIESEL TRACTOR:** Cab & cold air, 100 hp. \$13,500. 573-765-4406. Richland.

**IHC HOUGH 65 DIESEL ARTICULATING 4 WHEEL DRIVE LOADER:** \$9,750. 573-765-4406. Richland.

**IHC 766 DIESEL TRACTOR:** 80 hp with Koyker KS loader \$7,750. 573-765-4406. Richland.

**1996 FLEETWOOD RV WILDERNESS:** 26 ft camper with slide-out, gooseneck setup or 4<sup>th</sup> wheel, good condition, no leaks. \$3,500. 573-646-3351. Brand

**JOHN DEERE 4030 DIESEL TRACTOR:** Cab & cold air, with JD loader. \$19,750. 573-765-4406. Richland.

**SITREX 12 WHEEL BIFOLD RAKE.** \$5,250. 573-765-4406. Richland.

**VERMEER 4 BASKET HYD FOLD TEDDER:** \$4,700. 573-765-4406. Richland.

**2001 BUICK CENTURY:** Good tires, low mileage. \$3,200. 573-308-7781. Rolla.

**M & W 15ft. HYD. FOLD BRUSH CUTTER:** \$3,750. 573-765-4406. Richland.

**MEMORIAL DAY DEADLINES**

*Due to the upcoming holiday, the following deadlines will be observed:*

★★★★ Weekly Trader ★★★★★  
**Thursday, June 3 Edition**

**Display Advertising Deadline:**  
 Thursday, May 27 at Noon

**Classifieds Deadline:**  
 Thursday, May 27 at 3pm

*We appreciate your business. Thank you for your continued support.*

**TRADER** WEEKLY MAGAZINE

417-532-9131 • 800-665-8875  
 100 E. Commercial • Lebanon, MO  
 www.myweeklytrader.com



# YOUR AD GOES HERE!

**Add YELLOW Color For An Additional \$3 Per Reader Ad**

*All ads will include Phone Number (unless requested to be deleted by advertiser) and City Or Town, Phone Number with Area Code counts as one word. City or Town counts as one word.*

**RATE: 80¢ Per Word. All Classified Ads Require Payment Before Print.**

(1) 80¢	(2) \$1.60	(3) \$2.40	(4) \$3.20
(5) \$4.00	(6) \$4.80	(7) \$5.60	(8) \$6.40
(9) \$7.20	(10) \$8.00	(11) \$8.80	(12) \$9.60
(13) \$10.40	(14) \$11.20	(15) \$12.00	(16) \$12.80
(17) \$13.60	(18) \$14.40	(19) \$15.20	(20) \$16.00
(21) \$16.80	(22) \$17.60	(23) \$18.40	(24) \$19.20
(25) \$20.00	(26) \$20.80	(27) \$21.60	(28) \$22.40
(29) \$23.20	(30) \$24.00	(31) \$24.80	(32) \$25.60
(33) \$26.40	(34) \$27.20	(35) \$28.00	(36) \$28.80
(37) \$29.60	(38) \$30.40	(39) \$31.20	(40) \$32.00

## Place your Classified Ad TODAY!

**417-532-2800 • 800-665-8875**

**Fax: 417-532-8140**

**Or Mail To: P.O. Box 192 • Lebanon, MO 65536**

For your convenience we accept MasterCard, Visa, Discover or American Express



**DEADLINE FOR CLASSIFIED ADS: FRIDAY 4:00PM!**

Name \_\_\_\_\_

Address \_\_\_\_\_

City \_\_\_\_\_ Email \_\_\_\_\_

State \_\_\_\_\_ Zip Code \_\_\_\_\_ Phone \_\_\_\_\_

**Ad Total \$ \_\_\_\_\_ X # Weeks \_\_\_\_\_ = Amount Enclosed \$ \_\_\_\_\_**



**You own the land.  
Make it yours.**

**Compact Tractors   Performance-matched attachments   20.9-62 HP**



**(417) 777-2391**  
quarleskubota.com

Save big on our #1 selling\* sub-compact and compact tractors, featuring the versatility to handle every job and a wide range of performance-matched attachments. Stop in for a demo and to claim this offer on select models today.

**\$0 DOWN   0% APR   UP TO 60 MONTHS**  
**PLUS**  
**SAVE UP TO \$1,000**

**VISIT US TODAY FOR THIS LIMITED-TIME OFFER**

**L2501DT  
w/loader**

- NEW Kubota L2501DT
- 4wd, DIESEL, AG TIRES
- KUBOTA LOADER

**New L2501DT w/Loader Deal!**

**\$22,995  
Financing Price**

- 5' ROTARY CUTTER
- 5' BOX BLADE
- NEW 18' KODIAK TRAILER W/RAMPS



[KubotaUSA.com](http://KubotaUSA.com)

\*Based on EDA tractor sales data of under 20 horsepower models from 2009 to 2019. © Kubota Tractor Corporation, 2021. \$0 Down, 0% A.P.R. financing for up to 60 months on purchases of new Kubota BX, B, LX and L series equipment from participating dealers' in-stock inventory is available to qualified purchasers through Kubota Credit Corporation, U.S.A.; subject to credit approval. Example: 60 monthly payments of \$16.67 per \$1,000 financed. Customer instant rebates of \$500 are available on qualifying finance or \$800 on cash purchases of BX2680 equipment. Additional instant rebate of \$500 is available with purchase of one new qualifying implement. Some exceptions apply. Offers expire 6/30/21. Terms subject to change. This material is for descriptive purposes only. Kubota disclaims all representations and warranties, express or implied, or any liability from the use of this material. For complete warranty, disclaimer, safety, incentive offer and product information, consult your Dealer or KubotaUSA.com.