

FREE - TAKE ONE!

Vol. 28 No. 7

MAY 13, 2021

800-543-8271 • 800-665-8875

WEEKLY **TRADER** MAGAZINE



Find us on
Facebook

@myweeklytrader
AUCTIONS PG. 14

VISIT OUR NEW WEBSITE! MYWEEKLYTRADER.COM

Fairground Auto Plaza Is Now

ED MORSE **CHEVROLET** **BUICK • GMC**



ED MORSE **CHEVROLET** **BUICK • GMC**

ROLLA

NEW OWNER. NEW NAME. **SAME TEAM.**

100 Fairgrounds Road • Rolla, Missouri
573-364-1002 • fairgroundgm.com

Land

— For Sale —

Stone Co., MO • 1,025 +/- acres

\$1,793,750

- Stone Mountain Ranch is one of the largest land offerings available in Branson
- Located just minutes from the strip of downtown Branson, Silver Dollar City and Big Cedar Resort
- Stone Mountain Ranch is nestled among some of the most breathtaking scenery in Missouri
- Amazing wildlife, water and endless development possibilities including hunting retreat, residence or resort
- Multiple access points
- The property is next door to many area lakes including Table Rock, Taneycomo and Bull Shoals for boating and fishing
- Water is abundant on property with springs, creeks and small ponds for wildlife
- Roark Creek is live water and flows into Lake Taneycomo
- Black top frontage on Hwy 76 and just off Hwy 13.



Missouri's Top Land Specialist in 2014,
2015, 2016, 2017, 2018 and 2019

WHITETAIL PROPERTIES REAL ESTATE

HUNTING | RANCH | FARM | TIMBER

Brian Utecht | 417-766-5595

Brian.Utecht@whitetailproperties.com

WHITETAILPROPERTIES.COM





Getting Chores Done
LAND PRIDE
does that

DH25 SERIES

DISC HARROWS
40-100 HP 72", 96" Widths



www.landpride.com

- Cat. 1 & 2 Hitch
- 20" or 22" Notched blades
- 3" Square frame
- 7-1/2" Blade spacing
- Angle front & rear gangs up to 21 degrees
- Adjustment handle to aid in angling
- 1/2" Thick bearing hangers

For Outstanding Products & Service

AGRI-ENTERPRISES

1-1/2 Miles South Of Licking, MO On Hwy 63
573-674-2203 • 1-800-653-7152 • www.agri-enterprises.com

HAY, SADDLES, BOOTS, SUNFLOWER SEEDS, HATS, STRAW: Black Gold, Diamond dog foods, clip ad, save \$2 on Diamond Taste of the Wild. George's, Tack, Saddle, & Feed. 573-346-7866. Camdenton.


FERTRELL ORGANIC FERTILIZER:
Free Catalog. 315-796-4370.

VERNON 808 8MM MOVIE EDITOR:
With box and 8mm splicer. Like new, original owner. \$65. 417-844-4319. Springfield.

POOL TABLES: Installations, moves, recovers, repairs, accessories, etc. 573-646-1700.

WEATHERED BARN WOOD SIDING: 10" wide. 573-729-7226. www.pineridgerustic.com

DOGS & DUCKS & HAT-RACK BUCKS BOOK: by Larry Dablemont. Short terms for the outdoorsman, \$6.50. 417-532-2045. Please leave message. Lebanon.




VOTED #1 BEST Preowned Car Dealership

TIM'S USED CARS


(573) 341-3828 • 1334 South Bishop (Hwy. 63) • Rolla, MO
Next to Hwy CC • www.tims-used-cars.com




2014 RAM 1500
Crew Cab Limited, 4x4, 5.7 Hemi, Loaded with Options, 120,xxx Miles
Only \$29,900



2014 CHEVY SILVERADO 2500 HD
6.0 V-8, 4x4, Auto, A/C, 142,xxx Miles
Only \$19,900



2017 CHEVY SPARK LS
4 Cyl., Auto, A/C, 25,xxx Miles
Only \$11,500



2015 CHRYSLER TOWN & COUNTRY TOURING
V-6, Leather, DVD, 114,xxx Miles
Only \$11,900

LARGE SELECTION OF CARS, TRUCKS, SUVs & VANS!

KUSTER LOGGING

BUYER of Standing Timber
Oak and Walnut

Dozing Now Available

417-259-0047

References Available



LOG SIDING: 2X8 Pine/Western Cedar
www.pineridgerustic.com 573-729-7226.

USED MOBILE HOMES: Call David at VILLA HOMES IN ROLLA 573-578-8072. Rolla.

BUYING STANDING CEDAR: Minimum 6-in diameter. 417-531-0403.

MINI FAINTING GOATS: become addicted like me, 100% purebred, perfect for breeders or pets, a great variety of bloodlines, colors and patterns, check website www.greenacresvillage.com or call/text 573-216-7796. Lake of the Ozarks.

Fishing Season is here!
We have a great supply of: Berkley Flicker Shads
Charlie Brewers Slider Grubs
Swimming Minnows & Jig Heads!

Craig's OUTDOOR Sports

9435 HWY N. Suite A (417) 926-0255
Mtn. Grove, MO craigsooutdoorsports.com

Mon-Fri 9am-5pm • Sat 9am-Noon

BUYING MOBILE HOMES: Call David at VILLA HOMES IN ROLLA 573-578-8072. Rolla.

WANTED TO BUY ANTIQUE CARS: Convertible, Corvettes, unrestored, motors, parts considered. 870-324-1154.

MISSOURI OZARKS BOOKS: Scenic Driving the Ozarks, 317 pages, \$7.50. Missouri Wild Mushrooms, 186 pages, \$5.00. Missouri Orchids, \$3.75. Weird Missouri Book, a travel guide to Missouri's Local Legends and best kept secrets, 253 pages, HB, \$12.50. Life Along An Ozark River (Current River), 252 pages, HB, \$6.50. 417-532-2045. (leave message) Lebanon.

FOR SALE
D6D Powershift Caterpillar



\$40,000 OR TRADE FOR BLACK ANGUS COWS
417-259-2538 • VANZANT, MO

CUSTOM SAW MILLING: Lebanon. 417-533-4607, 417-664-1195.

MILK GLASS JUGS: Variety of sizes from OCS. 636-234-1888. Gerald.

1908 ALCOHOL BURNER: \$100 each. 636-234-1888. Gerald.

TINY HOMES – You gotta see these!! In Ashland. amegamobilehomes.com 573-657-2176.

FOR SALE: 256 New Holland, side delivery rake, 417-967-4527. Houston.

REGISTERED HEREFORD & ANGUS BULLS: Home raised, Some Show-Me Select Qualified. 573-701-7828. Belgrade.

THEY ARE HERE Tiny homes cute, cute, cute columbiadiscounthomes.com

OFFICIAL TRACTOR OF TOUGH™



Marshfield Machinery Inc.

222 E. Madison • Marshfield, MO 65706
417-859-2117 • www.marshfieldmachinery.com

MahindraUSA.com © 2020 Mahindra USA Inc.

Mahindra
Rise.

NEW MAHINDRA TRACTORS

4540 2WD & LDR 41HP	IN STOCK
2638 4WD & LDR 38HP	IN STOCK
1626 4WD & LDR 26HP	IN STOCK

USED TRACTORS

MF GC1723 W/LDR 22HP	10,000
ZETOR 6320 W/LDR 66HP	8,500

USED ROUND BALERS

MF 2946A 4X6 MESH	27,500
MF 1745 4X5	8,500
VERMEER 50SSI MESH	7,500
GEHL 2480 4X5	6,500
JD 435 4X6 MESH	6,500
JD 375 5X5	3,500
HESSTON 560 5X6	3,000
NH 850 5X5	1,500
VERMEER 605D 5X6	750

USED MOWER/CONDITIONERS

HESSTON 1345 12FT	9,500
-------------------	-------

USED CUTTERS

LANDPRIDE 15FT	5,500
----------------	-------

USED MISC.

HAYBUSTER 107 DRILL	12,500
FRONTIER BALE PROCESSOR	8,500
GEHL 418 8WHL RAKE	1,750
VERMEER 8WHL RAKE	1,750
M&W 10WHL RAKE	1,750
BUSH HOG POST HOLE DIGGER	1,200

Marshfield Machinery Inc.
222 E. Madison • Marshfield, MO 65706
417-859-2117
www.marshfieldmachinery.com

I BUY.....used mobile homes.: Call or text 573-338-6250 or email GregS.CDH@outlook.com

A CENTURY OF MISSOURI TIGERS BASKETBALL BOOK: by Michael Atchison, 258 pages, hardback. \$20. 417-532-2045 leave message. Lebanon.

TINY TINY TINY Homes Homes Homes – Call Marla 573-657-7040 chateauhomes.net

450 CASE: New motor, new under carriage, \$7,000. 417-532-5670.

3 POINT 10" POST AUGER: \$175. 417-733-7495. Buffalo

TWO GLASS INSULATORS: Identification book guides, \$6.50. 417-532-2045, leave message. Lebanon.

LA AND SC CASE PARTS: Case 960
Combine for Parts. 573-308-5884. Roach.

WANTED, TIMBER TO LOG ON SHARES: Honest, reliable, references. 417-533-4607, 417-664-1195.

HEALTHY KIKO YEARLING BILLY:
\$300. 573-858-3238. Salem.

VINTAGE POCKET KNIFE COLLECTION: 1950's + 60's, 26 models. \$150. 573-764-3517. Call in pm. Gerald.

THOMAS KINCAID BOOKS: \$2 each.
417-532-6561. Phillipsburg.

Experience Life In The "Past" Lane!



- Good Old Fashioned Home Cooking
- Homemade Bread, Buns & Pies

- Dry Goods • Gifts • Housewares
- Kitchenwares • Handmade Soaps



The Dutch Kitchen
Located in The Lead Mine Country Store

11-2:30 Daily • Closed Sundays
176 State Rd. YY • Tunas



The Leadmine Country Store

10am-5pm Daily • Closed Sundays
176 State Rd. YY • Tunas

ENGLISH BULLDOG PUPPIES: 5 males, lilac color, home raised, UTD shots, 417-989-9894. Thornfield.

SEEKING PLUMBER: with experience in New Construction & Residential service plumbing. Must have experience with all types of plumbing repairs and the ability to trouble-shoot and repair many different plumbing problems. We are looking for someone that is outgoing, self-motivated, reliable and has quality ethics. Valid driver license with good driving record required. We offer excellent pay and long-term employment to the right candidate. Paid vacation, paid holidays and health insurance. Immediate employment available. Salary is based on experience. Please call. 573-348-2093.

460 FORD ENGINE: Needs overhaul. \$100. 573-308-5884. Roach.

SIMPLICITY GARDEN TILLER: Rear tine, \$475. Lebanon.

REGISTERED HEREFORD & ANGUS BULLS: Home raised, Some Show-Me Select Qualified. 573-701-7828. Belgrade.

WANTED, TIMBER TO LOG ON SHARES: Honest, reliable, references. 417-533-4607, 417-664-1195.

CAMPER WINDOWS FOR SALE: \$200 for all. Call for sizes 417-664-8823. Conway

FIREARMS: Professional Repairs and Restorations. Baron's Gunsmithing. 573-363-5801, Camdenton.

ROUTE 66 DINING 7 LODGING GUIDE: 183 pages, \$5.00. 417-532-2045. (leave message) Lebanon.

TWO FORD REARENDs: Good shape, 4 10 ratio. 573-760-6280. \$100. Desloge.

FOR SALE: Bluetick Beagle puppies. 573-315-7574. Ironton.

INTERNATIONAL FARM-ALL CUB: New rear tires, new battery, runs fine. \$1,600. 417-543-3180. Wasola.

5.3 ACRES: South of Newburg, house, sheds, borders forestry, great hunting, more information call to make appointment to see. \$40,000. 573-368-1625. Owensville.

OZARK EMPIRE FAIR-SPRINGFIELD 60TH ANNIVERSARY COOK BOOK: 1937-1996, 144 pages. Prize winning recipes from the fair. \$9.50. 417-532-2045, (leave message) Lebanon.

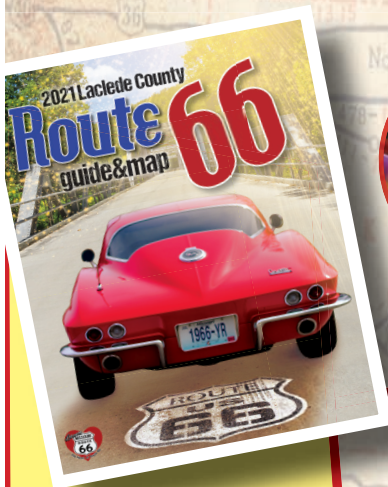
BALDOR-RELIANCE: 1 hp, 250-volt, electric motor. New, sacrifice, \$50. 417-345-4562 or 417-599-9157. Buffalo.

ALLIS-CHALMERS: 5040 diesel with loader, good tractor. \$6,500. 573-864-2611. Ashland.

FOR SALE: Miller bobcat 250 welder with 1160 hours. 417-932-4026. Summersville.

Take a drive to Lebanon in the heart of Laclede County!

So much to do waiting for YOU!



Pick up a copy of the Route 66 Map and Guide...

Cruise the Mother Road from Hazelgreen to Phillipsburg. Stop at the historic sites, grab a burger or some ice cream along the way.



Enjoy a great meal!

Lebanon is home to many great restaurants. If you are hungry, you will find just about any kind of food you are looking for. Enjoy one of the many fast food restaurants you are familiar with or try out one of our great locally owned restaurants.



Take a walk in the park!

Lebanon is proud of our parks and recreation department. We invite you to enjoy one of our many beautiful city parks. You will find walking trails, a skate park, the city swimming pool plus great playground equipment for the kids.



Shop for Antiques!

You will find lots of great antique and second-hand stores in Lebanon. Whether you are Downtown, or out on the Interstate you will enjoy shopping for those special treasures.



Visit the Past!

Don't forget to visit the Route 66 Museum at 915 South Jefferson. You will enjoy lots of old photos and memorabilia from the past. The museum is a must see if you are interested in the famous highway.

Come On In We're Safely OPEN

Visit Historic Downtown Lebanon!

If you are looking for a great place to shop, you will find over 50 shops including boutiques, jewelry stores, home décor, flowers, ice cream, shakes, salons, restaurants, floor covering, and antique stores.

Shop Fresh!

Be sure to visit the Farmer's Market on Jefferson Avenue. The new market pavilion was just completed. You will find lots of fresh produce, fresh eggs, meat and lots more. Plus, you will be supporting our area farmers when you shop the market.

Shop Local!

Continue driving south on Jefferson Avenue and you will find additional shopping including many of the big box stores you enjoy. In addition you will find a number of boutiques and restaurants.

Take a trip to the Fast Lane!

Lebanon is home to 2 great race tracks. If you are looking for a fun evening excursion, you are sure to enjoy all the excitement waiting for you during racing season in Lebanon.

Fish with us!

Bennett Spring is the most-visited state park in Missouri - we know why! The park stream is stocked daily with rainbow trout waiting for lucky fishermen. Fishing may be the main draw but the area also offers many other amenities such as a dining, campgrounds, cabins, hiking trails, floating by canoe, kayak or raft! Bennett Spring has what you need to make every trip one to remember.

Safe Travels Start Here!

LEBANON
MISSOURI
LACLEDE COUNTY

CDC safe gathering guidelines are followed.

2003 MERCURY MARQUIS: All original, 1-owner, like new condition, kept inside, 124,000. \$4,900. 417-844-4019. Springfield.

WANTED: Used Edger. Benuel Stoltzfus, 11605 Hwy AB, Licking. 65542.



Cheyenne Acres
Horse & Tack
BUY - SELL - TRADE
by Rolla, MO
Call For Directions & Availability
Call Kip
573-368-9402



TRUNK CHEST: From WWII, Drawer inside, excellent shape, from single corps. \$400 obo. 636-234-1888. Gerald.

BLUE/RED HEELER PUPS: Raised for 40 years. Good livestock dogs or pets. \$100 each. 660-553-2333. Cole Camp.

FORD 8N TRACTOR: Good condition, Sherman transmission with 6 ft. 3-point finish mower. \$2,200. 417-766-1991. Rogersville.

BELLY MOWER: 5ft. off C or B Allis Chalmers, complete, good condition. \$200. 417-766-1991. Rogersville.

WASHBURN ELECTRIC GUITAR: With case and Crate amp. \$200 obo. 417-532-6561. Phillipsburg.

ROUND BALES HAY: Net wrapped. \$29.50. George's Tack, Saddle & Feed. 573-346-7866. Camdenton.

CALUS LOGGING

20 YEARS EXPERIENCE

Buying Standing Timber
Walnut & Oak

Joe Calus, Owner
417-926-4606 • MTN. GROVE

CERTIFIED



2005 HONDA FOREMAN 4-WHEELER: 2wd, in very good shape, runs good, asking \$2,800. 573-237-2690. New Haven.

FEMALE ENGLISH CREAM GOLDEN RETRIEVER: 2 years old, spayed, AKC, very friendly, calm. \$700 adoption fee. 630-687-0705. Falcon.

BETTY CROCKER BAKING FOR TODAY COOKBOOK: Hardback. \$6.50. 417-532-2045. Leave message. Lebanon.

WANTED: 10 cords of wood. 314-497-1898. Leasburg.

PEDDLE TRACTORS FOR SALE: All brands. 573-859-6574 or 573-205-3328. Belle.

NOW TAKING ORDERS: for strawberries. Rissler. 573-392-1857. Barnett.

\$0 DOWN
+
0% FINANCING FOR 72 MONTHS
ON COMPACT UTILITY TRACTORS



INTRODUCING
NEW MOWER PACKAGES



JOHN DEERE

Heritage
TRACTOR

Offer ends 6/30/2021. Some restrictions apply. See dealer for details.

WANTED CRAFTSMAN TABLE SAW: direct drive, #11329970. 417-260-1904. Bucyrus.

COOKBOOK COLLECTION: 26 cookbooks, hardback and softback. All good shape. \$1.00 each or all \$20. 417-532-2045, leave message. Lebanon.

69 DART RACE CAR: Less engine, full tube chassis, all fiberglass except body, for sale or trade. 573-536-8913. Jefferson City.

JOHN DEERE 310C DIESEL BACKHOE LOADER: Cab, 4x4 extend-a-hoe, with extra hoe buckets. \$12,500. 573-765-4406. Richland.

BLACK 2007 SILVERADO EXTENDED CAB: 4x4, 1500, 163,000 miles. \$11,000. 417-531-3376. Grovespring.

WANTED: 1000 gallon propane tank. 573-378-6337. Versailles.

2008 CHEVY UPLANDER VAN: 157,000 miles, only 59,000 on GM installed motor. Call for pics. \$3,750. 573-774-1123. Dixon.

BLACK AGUS BULLS: from 12 to 18 months. 417-932-4026. Summersville.

1998 PROWLER CAMPER: Good condition, bunkbeds, 24 ft. 573-859-6789. Belle.

SMALL SQUARE BALES OF STRAW: 417-932-4026. Summersville.

WHEN IT COMES TO FARM SUPPLIES, WE'VE GOT THE RIGHT STUFF!

Top Quality Feed, Seed, and Farm Supplies

Fertilizer, Herbicide, Insecticide, Feed, Seeds & More from brands like these:



**Laclede County
Seed & Fertilizer**



20756 State Hwy W [W. City Route 66] • Lebanon, MO
[417]532-7898 www.lacledecountyseed.com

CAR DOLLY: Heavy duty, adjustable width ramps, good condition. \$900. 417-753-2747. Rogersville.

GARAGE DOOR: 7 ft high, 19 ft. wide, white insulated and hardware. \$175. 636-239-4124. Washington.

BIRD CAGE: on stand with tray and toys. \$65. 636-239-4124. Washington.

WANTED: Hay to cut, within 50 miles of Salem. Buy standing in field or cut in shares. Green Meadow Farm. 573-247-8055. Salem.

METAL CAGE: with tray, 54" long, 3 feet wide, 45" high. \$80. 636-239-4124. Washington.

1995 CHEVY 2-TON TRUCK: with 24 ft reefer box, 13 16 Cat with 6-speed transmission. \$8,850. 573-774-1123. Dixon.

SITREX 12 WHEEL: Bi-Fold Rake. \$5,250. 573-765-4406. Richland.

LOOKING TO BUY: Diesel 450C John Deere HiLift. 636-232-7480. Desoto.

FORD 7ft. SICKLE MOWER: \$550. John Deere 38 hyd 7ft – 9ft bar needs parts \$150. Bucket spike, \$375. Bucket forks \$100. Johnny Call Back box \$350. 3 sun block shades 7ftx8ft, \$50 each. 55 gallon barrel with hand pump. \$75. 12 ft. box trailer, 4 ft wide 6 ft tall, \$550. No checks. 573-201-9556. Newburg.

6 FOOT PULL TYPE BRUSH HOG: \$650. Wood finish mower, 6ft, 3 points. \$550. 636-239-4124. Washington.

MISSOURI HISTORICAL BOOK: published by State Historical Society of Missouri. \$6.50. 417-532-2045 leave message. Lebanon.

WHEEL HORSE RIDING MOWER: Model 520, hydraulic, 20 hp belly mower and front blade. \$650. 636-239-4124. Washington.

CUSTOM HARVESTING OF YOUR HAY: 4X5 round or small square bales. Green Meadow Farm. 573-247-8055. Salem.

CRAFTSMAN MOWER: 26 hp, 54" cut, Kohler engine, 6 speed, \$600. 573-729-6211, 573-453-0656. Salem.

KITCHEN FAUCET MOEN: Single lever, sprayer, new cartridge. \$45 obo. 636-239-2695. Washington.

QUALITY USED SADDLES WANTED: Will pay cash! George's Tack, Saddle & Feed. 573-346-7866. Camdenton.

NEW HOLLAND 855 ROUND BALER: New air bag, very good condition, has all the teeth, field ready. \$3,875. 314-724-7154. Leslie.

3 BUILDING LOTS: Near Terre DeLac, Bonne Terre, MO. Water, Sewer, Elec, all are 1 acre plus, beautiful wooded. \$11,000 each. Call 314-570-2257.

JOHN DEERE 566 ROUND BALER: Monitor, kicker. \$5,200. 573-765-4406. Richland.

JOHN DEERE 2955 DIESEL TRACTOR: Cab & cold air. 85hp, 1,700 hrs, with new loader. \$29,000. 573-765-4406. Richland.

CASE 580C DIESEL BACKHOE LOADER: \$9,200. 573-765-4406. Richland.

VERMEER 4 BASKET HYD FOLD TEDDER: \$4,700. 573-765-4406. Richland.

RADIATOR/FAN SCHROUD: Fits international model tractors models 200, 230, 240. \$125. 636-239-2695. Washington.

JOHN DEERE 2755 DIESEL TRACTOR: Cab & cold air, 75hp with John Deere 620 loader. \$19,950. 573-765-4406. Richland.

JOHN DEERE 467 ROUND BALER: Monitor, kicker, net wrap. \$10,850. 573-765-4406. Richland.

FORD 6600 DIESEL TRACTOR: Cab, low hours. \$9,250. 573-765-4406. Richland.

JOHN DEERE 4030 DIESEL TRACTOR: Cab & cold air, with JD loader. \$19,750. 573-765-4406. Richland.

MINI FAINTING GOATS: become addicted like me, 100% purebred, perfect for breeders or pets, a great variety of bloodlines, colors and patterns, check website www.greenacresvillage.com or call/text 573-216-7796. Lake of the Ozarks.

A CENTURY OF MISSOURI TIGERS BASKETBALL BOOK: by Michael Atchison, 258 pages, hardback. \$20. 417-532-2045 leave message. Lebanon.

Offering the Area's LOWEST METAL PRICES!



Custom Homes • Metal Roofs

29 Gauge
#1 PAINTED METAL
 ★ Lifetime Warranty - \$94.00 Sq.
 ★ 40 Year Warranty - \$89.00 Sq.
 ★ 20 Year Warranty - \$87.00 Sq.
 ★ 25 Year Galvalume - \$73.00 Sq.

Labor prices will be higher in locations over 75 miles from Marshfield, MO

1049 SCHOOLVIEW DR.
 Marshfield, MO



Marshfield
BUILDINGS
www.marshfieldbuildings.com

Pole Barn Packages

CALL TODAY FOR A FREE QUOTE!

24'x32'x10'	30'x40'x10'	40'x60'x12'	Sales Tax & Delivery not included. Labor quotes available as well.
24'x40'x10'	30'x60'x10'	CALL TODAY!	

Compare Before You Buy.

We Use Only The **Highest Quality** Materials!

ALL MATERIAL PACKAGES INCLUDE...

- ✓ #1 Yellow Pine Lumber
- ✓ #1-40 Yr. Painted
- Metal w/Screws
- ✓ 1-10' Overhead Door
- ✓ 1-36" Entry Door

Fully Insured



PORTABLE BUILDINGS
 Rent to Own
 No Credit Check

JOHN DEERE SMALL GROUND DRIVEN MANURE SPREADER: \$1,500. 573-765-4406. Richland.

BOOTS: Hip waders, rubber and leather boots. Men's 11, Women's 7, some insulated, \$15-\$45 obo. 636-239-2695. Washington.

VEHICLE FOUR WHEEL DOLLY: 1000 lbs max weight. \$75 firm. 417-457-1023. Raymondville.

NEW HOLLAND 7230 DISKBINE: With rollers. \$10,000. 573-765-4406. Richland.

WANTED: Buying old chicken barns. 417-741-0516. Hartville.

IHC HOUGH 65 DIESEL ARTICULATING LOADER: \$9,750. 573-765-4406. Richland.

2002 S10 PICKUP: Maroon, good tires, good shape, runs good! \$3,500. 417-533-9484. Grovespring.

IHC 766 DIESEL TRACTOR: 80 hp with Koyker KS loader & bale spike. \$7,750. 573-765-4406. Richland.

NEW IDEA: 5410 Disk mower, 10ft. \$4,450. 573-765-4406. Richland.

NEW HOLLAND 1411 DISKBINE: with roller. \$8,950. 573-765-4406. Richland.

POOL TABLES: Installations, moves, recovers, repairs, accessories, etc. 573-646-1700.

MISSOURI OZARKS BOOKS: Scenic Driving the Ozarks, 317 pages, \$7.50. Missouri Wild Mushrooms, 186 pages, \$5.00. Missouri Orchids, \$3.75. Weird Missouri Book, a travel guide to Missouri's Local Legends and best kept secrets, 253 pages, HB, \$12.50. Life Along An Ozark River (Current River), 252 pages, HB, \$6.50. 417-532-2045. (leave message) Lebanon.

WEATHERED BARN WOOD SIDING: 10" wide. 573-729-7226. www.pineridgerustic.com

WE'RE NOT JUST IN PRINT

Visit the newly re-designed

WWW.MYWEEKLYTRADER.COM

CHEVY CERTIFIED SERVICE
SPRING TIRE EVENT

\$200 MAIL-IN REBATE!
ON A SET OF FOUR TIRES FROM BRIDGESTONE, CONTINENTAL, GOODYEAR, HANKOOK, AND PIRELLI WHEN PURCHASED WITH A GM OR BUYPower CARD.

LOWE CHEVROLET
"We're Easy to Deal With!"
View our Inventory -

WEEKLY TRADER MAGAZINE

Serving Central Missouri
in 32 counties!

417-532-9131
100 Commercial Street
Lebanon, MO 65536
myweeklytrader

Auctions Auto Tractors Real Estate ATV's / Motorcycles Building Supplies Miscellaneous E-Editions

This week's ads

THIS WEEK'S CLASSIFIEDS

TABLES:
Installations, moves,
repairs, etc. 573-646-1700.

weathered BARN WOOD
SIDING: 8' & 10' wide.
573-729-7226.
www.pineridgerustic.com

VEHICLES: 1927-1991
www.gohartland.com
417-543-6354.

CHULTE SX 318: 18 ft
cush cutter, bought new
1919, still under warranty,
\$17,750/obo. Norwood
417-349-0084.

WANTED STANDING
TIMBER: Butler Logging,
417-448-9323.

ROD AND REELS: fishing
season is coming, \$5 and
up. Conway, 417-589-8200.

1989 NISSAN TRUCK:
Runs but needs clutch
and body work. \$675.
Lebanon, 573-453-4100.

SAVAGE MODEL NO.
270WN: with Leupold
scope, \$375. Remington
Model 770 with scope,
\$300, obo. 417-679-4355.

STOCK TRAILER: 1983
Goose, goose-neck: 24',
new floor. Four new 10
ply truck tires. \$2450.
Lebanon (417)664-2198.

QUALITY REPLACEMENT
COWS: COW/CALF PAIRS,
BREED HEIFERS AND
BREEDING BULLS.
707-100-0000

BITTERSWEET COUNTRY

FEATURED ADVERTISER

Sakelaris Ford Lincoln,
Where the Customer is Always #1!
Come See Us at Our NEW LOCATION!

ALL NEW Super Clean, Safe Facility
at 1621 Martin Springs Drive in Rolla, MO

Get COVID-19 Relief On A New Ford Vehicle!

BUILT TO LEND A HAND **Ford**

NEW VEHICLE PURCHASES
3 MONTHS' DEFERRED **3 MONTHS PAID*** **6 MONTHS**
RELIEF FOR PEACE OF MIND
(Qualified Buyers Financed with Ford Credit)

ON SELECT NEW 2019, 2020 & 2021 FORD VEHICLES.

0% APR for 72 mos.*
Ford Credit Financing for Qualified Buyers
PLUS: Defer Three Payments* on Select New 2020 Ford Vehicles

ALSO Available on Select New Ford Vehicles: \$500 Bonus Cash of MSRP*

0% APR for 84 mos.*
Ford Credit Financing for Qualified Buyers
PLUS: Defer Three Payments* on Select New 2019 Ford Vehicles

MORE PRINT ADS

MAKING FRIENDS AGAINST CANCER

Starnes Auto LLC
22115 Rt. 66
Lebanon, MO 65536
417-532-9131
www.starnesauto.com

2003 FORD RANGER \$4,800
2003 GMC ENVOY \$17
2003 CHEVY MALIBU \$2,500

ALL OF OUR FOREST RIVER VIKINGS

THE ULTIMATE WOOD HEAT

MAKING FRIENDS AGAINST CANCER

1 WE ARE KW
KELLERWILLIAMS.

We are the **NUMBER ONE** real estate company in the United States!

AMANDA HOUGH
C:417-664-1113
O:417-883-4900
609 W. Elm • Suite B
Lebanon, MO

Each office is independently owned & operated.

✓ Diagnostic
✓ Auto Body & Paint Repair
✓ Glass Repair
✓ Used Car Sales & More

GET STARTED

Starnes
Auto Body 417-588-3159

MAKING FRIENDS AGAINST CANCER

October 22, 2020

View this issue
Browse other issues

Classifieds at your fingertips

View ads from local businesses

Every display ad is available online

View the entire magazine online

WEEKLY TRADER MAGAZINE

417-532-9131
www.myweeklytrader.com

USED MOBILE HOMES: Call David at
VILLA HOMES IN ROLLA 573-578-8072.
Rolla.

FERTRELL ORGANIC FERTILIZER:
Free Catalog. 315-796-4370.

BUYING STANDING CEDAR: Minimum
6-in diameter. 417-531-0403.

NOW HIRING DIESEL MECHANIC

Full Time, Vacation, Benefits,
Climate Controlled Shop

\$15 - 28 Hr.

Depending on experience.

Email resume to
freeburg@diamondrequisition.com

DIAMOND EQUIPMENT

LOG SIDING: 2X8 Pine/Western Cedar
www.pineridgerustic.com 573-729-7226.

BUYING MOBILE HOMES: Call David at
VILLA HOMES IN ROLLA 573-578-8072.
Rolla.

WANTED TO BUY ANTIQUE CARS:
Convertible, Corvettes, unrestored, motors,
parts considered. 870-324-1154.

TINY HOMES – You gotta see these!! In
Ashland. amegamobilehomes.com 573-657-
2176.

2020 MAHINDRA ROXAR



4cyl., 5 Speed, Cab, Air & More.
Less than 1500 miles. Like new.
Paid \$25K, will sell for \$23K OBO

CALL 314-570-2257

[Home](#)
[Food](#)
[Fun](#)
[Fishing](#)
[Floating](#)
[Lodging](#)
[Shopping](#)
[Events](#)
[Maps](#)

Bennett Spring “Country’s” ONLY website
featuring the area’s best fishing, floating,
food, insightful articles, and Trout Talk!

Plan your next outing at

www.bennett-spring.com

brought to you by: **LC RECORD**

417-532-9131 • 100 E. Commercial
www.laclederecord.com

HAY, SADDLES, BOOTS, SUNFLOWER SEEDS, HATS, STRAW: Black Gold, Diamond dog foods, clip ad, save \$2 on Diamond Taste of the Wild. George's, Tack, Saddle, & Feed. 573-346-7866. Camdenton.

FIREARMS: Professional Repairs and Restorations. Baron's Gunsmithing. 573-363-5801, Camdenton.

REGISTERED HEREFORD & ANGUS BULLS: Home raised, Some Show-Me Select Qualified. 573-701-7828. Belgrade.

CUSTOM SAW MILLING: Lebanon. 417-533-4607, 417-664-1195.

FOR SALE: 256 New Holland, side delivery rake, 417-967-4527. Houston.

BLUE/RED HEELER PUPS: Raised for 40 years. Good livestock dogs or pets. \$100 each. 660-553-2333. Cole Camp.

LA AND SC CASE PARTS: Case 960 Combine for Parts. 573-308-5884. Roach.

460 FORD ENGINE: Needs overhaul. \$100. 573-308-5884. Roach.

Is Your Log Home Starting To Look UGLY?
Professional Staining & Repair
(Log Homes & Wood Siding)

Call Pine Ridge Rustic
Log Home Building Supplies **573-729-7226**
www.pineridgerustic.com




Wright Spray Foam Insulators, LLC
Commercial & Residential
Call for FREE Estimates!

Ervin Gingerich 417-926-2052
B. Eli Yoder 417-746-4932

THEY ARE HERE Tiny homes cute, cute, cute columbiadiscountshomes.com

TINY TINY TINY Homes Homes Homes – Call Marla 573-657-7040 chateauhomes.net

I BUY.....used mobile homes.: Call or text 573-338-6250 or email GregS.CDH@outlook.com

REGISTERED HEREFORD & ANGUS BULLS: Home raised, Some Show-Me Select Qualified. 573-701-7828. Belgrade.

TWO GLASS INSULATORS: Identification book guides, \$6.50. 417-532-2045, leave message. Lebanon.

WANTED, TIMBER TO LOG ON SHARES: Honest, reliable, references. 417-533-4607, 417-664-1195.

CAMPER WINDOWS FOR SALE: \$200 for all. Call for sizes 417-664-8823. Conway

INTERNATIONAL FARM-ALL CUB: New rear tires, new battery, runs fine. \$1,600. 417-543-3180. Wasola.

3 POINT 10" POST AUGER: \$175. 417-733-7495. Buffalo

1908 ALCOHOL BURNER: \$100 each. 636-234-1888. Gerald.

ALLIS-CHALMERS: 5040 diesel with loader, good tractor. \$6,500. 573-864-2611. Ashland.

2003 MERCURY MARQUIS: All original, 1-owner, like new condition, kept inside, 124,000. \$4,900. 417-844-4019. Springfield.

FAINTING GOAT BUCKLINGS: Pure bred, package deal. 573-216-7796. Roach.

ENGLISH BULLDOG PUPPIES: 5 males, lilac color, home raised, UTD shots, 417-989-9894. Thornfield.

WANTED: Used Edger. Benue Stoltzfus, 11605 Hwy AB, Licking. 65542.

SPECIALIZING IN HEAVY DUTY GATES



Cow Country Gate Sales

Call Randy: 573-569-4754
or Home: 573-539-2528
Located at: Zimmerman Welding
16889 Hwy 52, Barnett, MO

CENTRAL BOILER **CLASSIC EDGE**
TITANIUM HDX

Eliminate high heating bills with Central Boiler's NEW, certified Classic Edge Titanium HDX OUTDOOR WOOD FURNACE. Call today!

Outdoor Wood Furnace CentralBoiler.com

Yarbrough Equipment Sales & Services, Inc.
9776 E. State Hwy OO • Strafford, MO
417-736-2303 • 1-866-286-6901 • www.yarbeq.com



The Classic Edge 360, 560 and 760 HDX are U.S. EPA Certified

WANTED, TIMBER TO LOG ON SHARES: Honest, reliable, references. 417-533-4607, 417-664-1195.

450 CASE: New motor, new under carriage, \$7,000. 417-532-5670.

SIMPLICITY GARDEN TILLER: Rear tine, \$475. Lebanon.

BALDOR-RELIANCE: 1 hp, 250-volt, electric motor. New, sacrifice, \$50. 417-345-4562 or 417-599-9157. Buffalo.

HEALTHY KIKO YEARLING BILLY: \$300. 573-858-3238. Salem.

MILK GLASS JUGS: Variety of sizes from OCS. 636-234-1888. Gerald.

ROUTE 66 DINING 7 LODGING GUIDE: 183 pages, \$5.00. 417-532-2045. (leave message) Lebanon.

FOR SALE: Miller bobcat 250 welder with 1160 hours. 417-932-4026. Summersville.

BLACK AGUS BULLS: from 12 to 18 months. 417-932-4026. Summersville.

**VISIT
WEBSITE FOR
PICTURES**

MILLWRIGHT WOODWORKING INDUSTRIAL AUCTION

SATURDAY, MAY 15th - 10:00 A.M.

Location: 521 George St., Marshfield, MO **Directions:** Located in the Industrial Park in Marshfield, MO. (The Old York Factory Building)
WATCH FOR CHADWELL AUCTION SIGNS. **Payment System:** Cash • Debit Card • Credit Card (Debit / Credit Card Fee Will Apply) Checks approved if known by auction company. **VISIT: WWW.CHADWELLAUCTIONS.COM**

**PREACH
EVANGELISTIC
MINISTRIES**

**Atlas Copco
150hp Industrial
2200 Gallon
Air Compressor
w/ Safety D
Electric Box,
Dryer & Tank**



Controlled Pyrolysis Gas Incinerator



**Model
PTR 3471
Pollution
Control
350,000
BTU**

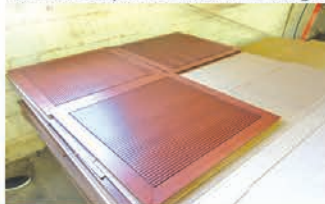
SHOP ~ INDUSTRIAL ITEMS

3 Phase Opti 4' Sander • Large Lot of Roller Stands • Advantage Plus Veneer Press 230 volt • 12x12 Industrial Overhead Garage Doors (motor & pull type) • Approx 200 Shop Lights • Large Lot of 3 Phase Step Down Transformers • 500' Square D Buss Bar (sold in sections) • Assorted 3 Phase Working Motors • Large Lot of Air Flow Vents • Square D Switch Gear for Air Compressor 480v 800amp • Square D Main Smitch for Buss Bar • Square D 480 Volt Boxes • Switchboard 480v 1200amp • Federal Pacific Dropdown 480 to 240 to 120 Transformer • Cutler & Hammer 200 amp 40 space Box • Square D 200 amp 40 space Boxes • 120 Transformers • Large Lot of Assembly Line Drying Racks • Pallet Forks • Large Lot of 120 Industrial Fans • Cutler & Hammer 3 Phase 42 space Breaker Box • Roller Conveyor Belt • Large Lot of Fire Extinguishers • 8" 20' Steel Eye Beams • 5" Steel Pipe • Lot of Red Iron Steel • Other



MILLWRIGHT ~ WOODWORKING (Large Quantity)

Fire Rated DuraFlak • Large Lot of Sign Board • Large Lot of Kerkore • Rolls of Edge Banding • Cedar Board Drops (assorted) • Large Lot of Acoustic Ceiling Tiles (oak, walnut, cherry) • Oak Trim (assorted sizes) • 3/4" 5 x 10 Fireproof Press Board • Large Lot of Champagne Oak Veneer Press Board • Large Lot of Bio Acoustic Intill Panel • Fill for Acoustic Board • Large Lot of Oak Veneer Press Board (assorted sizes) • Large Lot of Walnut Veneer Press Board (assorted sizes) • Large Lot of Insulation Board • Lot of Cherry Veneer Press Board • Medex Board (assorted sizes) • Sheetrock • Large Lot of Misc Lumber • Rough Sawed Oak • Red Cedar Lumber • Maple Lumber • Hemlock Drops • Vertical Grain Douglas fir • Other



LIGHTING (All lighting is NIB, over 1000 boxes)

Juno Recessed Tilt Lighting (several pallets) • Juno Basics Series Retrofit Tilt Led Light Fixtures • Juno Down Lights • Juno Trac Master Lights • Acculite Lighting • Kurt Versen Lighting • Juno Retro Combo Lighting • Pallets of Recessed Lighting • Other

AUCTIONEER'S NOTE: This Auction will have a Large Variety of each item. We are cleaning out a warehouse and there will be several pallets of each item! This is only a partial listing, there are many Items still coming out of the warehouse. Come prepared to spend a full day with us. **Thanks, Shawn**

DRIVER'S LICENSE OR PICTURE I.D. REQUIRED • TERMS: CASH OR APPROVED CHECK   OR 

Chadwell
Auction Service, LLC
www.chadwellauctions.com

Auctioneer:
SHAWN CHADWELL
417-830-0209
Ringmen:
Weston Chadwell - 417-349-0727

Clerk:
SHELLY CHADWELL
Cell: 417-880-8449
Cashiers:
Shawn Irby • Marla Chadwell
Kati Roberts • Emily Chadwell

PROFESSIONAL SALES MANAGEMENT

LUNCH WAGON • APPRAISAL SERVICE • RAIN OR SHINE
All announcements made day of sale take precedence over any printed matter.
Not responsible for lost or stolen merchandise. Not responsible for accidents.

**VISIT
WEBSITE
FOR
PICTURES**

OUTSTANDING FARM AUCTION

Tractors ~ Outdoor Misc. • Farm Equipment ~ Farm Related ~ Shop Items

SUNDAY, MAY 16TH - 1:00 P.M.

Location: RR72, Box 380, Norwood, MO

Directions: From Ava: Take Hwy 76 East 17 miles to Auction. From Mtn Grove: Take Hwy 95 South 12 miles to Hwy 76 West go approx 7 miles to Auction. From Norwood: Take Hwy C 12 miles to Hwy 76 East go 3.5 miles to Auction. **WATCH FOR CHADWELL AUCTION SIGNS.** Payment System: Cash • Debit Card • Credit Card (Debit / Credit Card Fee Will Apply) Checks approved if known by auction company. VISIT: WWW.CHADWELLAUCTIONS.COM

**Bob & Starr
PETERS**



**Caterpillar 951C Track Loader
(150hrs on new rebuilt motor)**



TRACTORS

JD 4020 Synchro Dual Remotes 540 & 1000 PTO (6100hrs) • JD 1941 A Tricycle Front End • JD 2940 4wd 4spd hi lo dual Hydraulics 540 & 1000 PTO • JD 830 4spd hi lo (2700hrs) excellent rubber • JD 2440 w/Great Bend Joystick Loader Rollbar 4spd hi lo Single Remote 540 PTO • JD 2510 50hp Quad Shift 8spd 540 & 1000 PTO Single Remote • JD "B" 1946 w/Ant Eater Front End • JD 2950 w/Westendorf TA28 Loader 4wd Cab Heat Air 8spd Quad Shift Dual Remotes 540 PTO (new engine) • JD "M" 1950 (needs to be put back together, has all the parts)



OUTDOOR ~ MISCELLANEOUS

JD 145 Automatic Hydrostat 48" cut (261hrs) • Misc Lumber • Brave 26 Ton Hydraulic Wood Splitter • Plastic Lawn Chairs • Sleds • Hose Reel • Trash Cans • Assorted Flower Pots • Tomato Stakes • Assorted Hand Tools • Yard Carts • 55 gallon Plastic Drums • Patio Table • Cream Cans • Rustic HD Light Fixture • Box Fans • Wild Hog Mounts • Ram Mounts • Wooden Desk • Walnut & Cedar Lumber • Weed eaters • Frost Freeze Hydrants • Small Animal Traps • Old Church Pews • 026 Stihl Chain Saw • 031 Stihl Chain Saw • Display Cabinet • Other

FARM EQUIPMENT ~ FARM RELATED

New Great Bend 330 Loader w/6' Bucket • New JD Fenders • 10' International Bushhog • 5' King Cutter Bushhog • NH 268 Square Baler • 3pt 4' Smoothing Disc • Rear Bale Spikes • 3pt Post Hole Auger • 12' HD Gates • Ford 3pt 2 Bottom Plow • (8) Hog Panels • Front Bale Spikes • 5' Angle Blade • 6' Competitor Bushhog (needs gear box) • 8' Douglass Roller • Large Lot of 16' Cattle Panels • 4' Walk Thru Bow Gate • (20) 12' Cattle Panels • (2) Horse Feeders • Poly Water Troughs • JD Loader • Blue Mule 10x12 Pen • 10' Corral Panels • (2) 300 Gallon Fuel Tanks on Stands • Misc 1" Pipe • JD Tractor Weights • 55 Gallon Ag Sprayer w/Wand • JD 2 Bottom Plow • JD 2 Bottom Steel Wheel Plow • 1975 Chevy 1/2 Ton 4wd Flatbed (no title) • 24' Flatbed Trailer w/Dove Tail • 6' Woods Box Blade • Other

SHOP ITEMS

Craftsman 12" Band Saw • Ryobi 10" Table Saw • Campbell Hausfeld Airless Paint Sprayer on Wheels • Portable Speed Air Sandblaster • Black Max 5hp 60 Gallon Air Compressor • 13" Craftsman Scroll Saw (nib) • 10" Craftsman Band Saw (nib) • Dayton 295 Amp Welder • Shop Desk • Silver Beauty 125 Turbo Mig Welder • 12 Gallon Shop Vac • Torpedo Reddy Heater • 12 Ton Hyd Press • Other

SEVERAL HOUSEHOLD ITEMS

Unable to list items at time of print.

**1996 Sundowner Aluminum Horse Trailer
(3 Horse Slant w/ Walk Thru Tack Room)
Excellent Condition**

**1941 Clark Fork Lift
w/ Forks
Lincoln 4 Cylinder
Motor (rare)**



100+ Square Bales of Hay

AUCTIONEER'S NOTE: All equipment has been stored inside. This will be a very nice Auction. Make plans to spend the Afternoon with us. *Thanks, Shawn*

DRIVER'S LICENSE OR PICTURE I.D. REQUIRED • TERMS: CASH OR APPROVED CHECK

VISA OR DISCOVER

Chadwell
Auction Service, LLC
www.chadwellauctions.com

Auctioneer:
SHAWN CHADWELL
417-830-0209

Ringmen:
Weston Chadwell ~ 417-349-0727

Clerk:
SHELLY CHADWELL
Cell: 417-880-8449

Cashiers:
Shawn Irby • Marla Chadwell
Kati Roberts • Emily Chadwell

PROFESSIONAL SALES MANAGEMENT

LUNCH WAGON • APPRAISAL SERVICE • RAIN OR SHINE
All announcements made day of sale take precedence over any printed matter.
Not responsible for lost or stolen merchandise. Not responsible for accidents.

REAL ESTATE-CAR-GUNS-AMMO-TOOLS-FURNITURE-MISC AUCTION

SATURDAY MAY 15, 2021 • 10:00 AM

548 ROUND BARN LANE • MARSHFIELD, MO

FROM EAST OF FORDLAND ON HWY 60 GO NORTH ON STATE HWY A 4.5 MILES, THEN WEST ON STATE HWY FF 2/10 MILE, THEN NORTH ON ROUND BARN LANE 6/10 MILE TO AUCTION ON RIGHT. FOLLOW SALE SIGNS. BREAKFAST & LUNCH AVAILABLE/

FOR PICTURES SEE WEBSITE OR AUCTION ZIP.COM. TO PREVIEW CALL 417-830-0153. TERMS: 10% DOWN DAY OF AUCTION, BALANCE @ CLOSING WITHIN 30 DAYS OR BEFORE. REAL ESTATE SELLS @ 11:00

REAL ESTATE



APPROX 1708 SQ FT BASE AREA, ADJ AREA 2445 1988 3 BEDROOM, 2 BATH DOUBLE WIDE SITTING ON UNFINISHED BASEMENT, 2 LIVING AREAS, DINING, UTILITY, GAS FIREPLACE IN LIVING, CH/CA. 48' X 29' SHOP W/LIVING QUARTERS, BATH, CONCRETE FLOORS, ELECTRICAL, 10'X10' OVERHEAD DOOR, 2 WALK THRU DOORS, 11' CEILING, WINDOW AIR CONDITION, ALL THIS SITTING ON APPROX 10 ACRES MORE OR LESS. BEAUTIFUL SETTING, MATURE TREES, LONG DRIVEWAY FOR PRIVACY. 2020 TAXES \$431.64

CAR

2001 CHEVY TRACKER, 2 LITER MOTOR, 4 WHEEL DRIVE, 4 DOOR*

GUNS

1. REMINGTON 870 EXPRESS 12 GA SER# X260255M; 2. CVA 50 CAL BLACK POWDER W/4X BUSHNELL SCOPE SER# 61-13-114662-00; 3. MARLIN 22 BOLT ACTION W/4X SIMMONS SCOPE SER# 24678441; 4. MARLIN 22 AUTO MODEL 60 W/1 1/2X4 1/2 SIMMONS SCOPE SER# 12530663; 5. NEW ENGLAND HANDI RIFLE SB2 22-250 REM W/3X9 RED FIELD SCOPE SER# NU331634; 6. WINCHESTER MODEL 55 22 AUTO NO SER#; 7. NEW PORT SINGLE BARREL 16 GA SER# A878889; 8. PELLET RIFLE SHANGHAI CHINA; 9. PELLET RIFLE NO NAME; GUN CLEANING KIT*

KNIVES

CASE* CASE DOUBLE X* BOKER* GERBER* CRAFTSMAN* BEAR* FROST* K BAR* CAMILLUS* WESTERN* SCHRADER* BUCK* OLSEN* UNCLE HENRY* OLD TIMER* REMINGTON* CRAFTSMAN CARVING SET* VICTORINOX*

AMMO

56 ROUND 22-250* 5 BOXES AGUILA 22* 1 BOX 525 REM 22* 1 BOX 100 REM 22* 1 BOX 22 BIRD SHOT* 1 BOX 20 GA* 3 BOXES 16 GA* 6 BOXES WINCHESTER 12 GA* MISC 12 GA SHELLS*

TOOLS

MTD 18" STRING TRIMMER* RL FLO MASTER BACK PACK SPRAYER* TORO RIDING MOWER, SCRAP* (2) 2 WHEEL DOLLY* WHEEL BARROW* 2 WHEEL

LAWN CART* CAR RAMPS* LONG HANDLE TOOLS* WERNER 6' ALUM STEP LADDER* 26' EXT ALUM LADDER* APPLIANCE DOLLY* EXT CORDS* 3RD LINK* DELTA 10" TABLE SAW* SANDER ON STAND* MARQUETTE 200 AMP WELDER* AIR HOSE & REEL* PIPE WRENCHES* CHANEL LOCKS* BOLT CUTTERS* JACK STANDS* LEVELS* LIMB SAW* 12 TON BOTTLE JACK* HAMMERS* DRILL BITS* ELECTRICAL TERMINAL BOX* CRAFTSMAN 16" CHAIN SAW* ROCKWELL 10" SKILL SAW* B&D 1" DRILL* CHICAGO 1/2" DRILL* RAM 1/2" DRILL* BOSCH 3/8" HAMMER DRILL* REMINGTON POWER TOOL* PORTER CABLE 5" DA SANDER* 6" BENCH GRINDER* MONTGOMERY WARD ROLL AROUND TOOL BOX* CRAFTSMAN WRENCHES & SOCKET SET* 4 DRAWER CHEST CRAFTSMAN TOOL BOX* C CLAMPS* HAND SAWS* CRAFTSMAN 5 DRAWER WORK BENCH CABINET* NUTS, BOLTS, FASTENERS* ORGANIZERS* CHICAGO ELECT SAWZALL* WEN JIG SAW* RYOBI 4" SANDER* B&D 3/8" DRILL* (2) 7 1/4" SKILL SAWS* CRAFTSMAN 3/8" DRILL* MILWAUKEE HOLE SHOOTER* SHOP FAN* WET STONE KNIFE SHARPENER* BELT/DISC SANDER* HEAT GUN* ROCKWELL SHAPER* FOLEY BELL 1" SAW* CRAFTSMAN 6" JOINTER* 30 LB LP CYLINDER* WOOD LATHE* BULLET HEATER* 10 GAL SHOP VAC 3 HP* CRAFTSMAN 10" RADIAL ARM SAW* GRIZZLY DUST COLLECTOR* CRAFTSMAN 14" CHOP SAW ON STAND* MAKITA 400 MM PLANER* 3 COLEMAN LANTERNS* BOSTITCH AIR BRAD NAILER* BOSTITCH AIR STAPLER* GRIZZLY AIR STAPLER* CENTRAL PNEUMATIC NAILER* 1/2" AIR IMPACT* 6" DA AIR SANDER* (3) 1/4" AIR DIE GRINDER* 3/8" AIR RATCHET* FORSTNER DRILL BIT SET* CRAFTSMAN TAP & DIE SET* ROUTER BITS* DELTA 10" MITER SAW* PRO TEC 8" MITER SAW* PAINT BRUSHES* MILWAUKEE 3/8" DRILL* MAKITA BELT SANDER* 3" PLANER* BOSCH JIG SAW* B&D ZIP SAW* CLEVIS* BOOMERS* TRACTOR PINS* GAS CANS* STAPLES & STAPLE GUN* METER VISE* MISC WIRE* HUSKY 60 GAL 6 1/2 HP AIR COMPRESSOR 240 VOLT* 6500 EXTREME GENERATOR* TOLEDO PLATFORM SCALES* MISC PAINT* STEP STOOL* SAW HORSES* 20 LB PROPANE BOTTLE* 1 1/4 TON CHAIN HOIST* ARMY GAS CANS* SHOP VAC 8 GAL*

FURNITURE-MISC

KENMORE FRIDGE* KENMORE WASHER/DRYER* CROSLLEY CHEST FREEZER* MICROWAVE* GE 5100 BTU WINDOW AIR CONDIT LIKE NEW* GE WINDOW AC 10,000 BTU* (2) SANYO FLAT SCREEN TV'S* LODGE STYLE HAND MADE FURNITURE, QN BED COMPLETE, QUILT RACK, 2 BAR STOOLS, END TABLES, COFFEE TABLES* ROCKER RECLINER* TABLE LAMPS* PINE CABINET* FLOOR LAMP* MARBLE TOP TABLE* METAL TABLE* FULL SZ BED COMPLETE* 4 DRAWER FILE CABINET* KNEE HOLE DESK* WALL MIRROR* SOFA* TRUNK* ANTIQ CLOCKS* 8' FOLDING TABLE* BISSELL POWER CLEANER* KENMORE VAC* WALL PICTURES* TV TRAYS* 4 & 5 DRAWER CHEST* MAGAZINE RACK* THOMAS COLLECTIONS EDITION RADIO* UTILITY CART* NEW BRAUNFELS SMOKER* 2 METAL CHAIRS* WOOD STOVE* SEWING BOX* DECORATIVE PLATES* METAL CANISTERS* MISC LAMP PARTS* KEROSENE HEATER* GLOBE* GARDEN CHEMICALS* GALVANIZE TUBS* GRANITE PAN* KEROSENE LAMPS* FIGURINES* PET CARRIER* TOWELS, LINEN* ANTLERS* WOODEN DUCKS* MONOPOLY GAMES* METAL MOBIL TOY TRAILER* HEN ON NEST* MILK GLASS* BOOKS* CROCK JUG* MISC DISHES* SILVERWARE, UTENSILS* PLASTIC WARE, PYREX, BAKING PANS, STAINLESS BOWLS, POTS, PANS, MISC CUPS* TOM'S PEANUT JAR*

**OWNER: ESTATE OF
FORREST CRAIG CAMP**

AUCTIONEER NOTES: ANNOUNCEMENTS MADE ON SALE DAY WILL TAKE PRECEDENCE OVER ANY OTHER PRINTED MATERIALS. NOT RESPONSIBLE FOR ACCIDENTS OR LOSS OF ARTICLES ON OR NEAR SALE SITE.

**MELTON AUCTION
& REALTY CO LLC**



www.MeltonAuction.com | Roger@MeltonAuction.com
Roger Melton | Nixa, Mo | 417-830-0153 or 417-725-1801
Brad Cole | Nixa, Mo | 417-840-2950
Tanner Foster | Galena, Mo | 417-840-5519

ROBERTSON FARM AUCTION



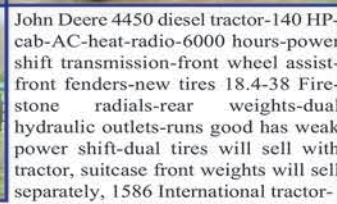
Raymond Robertson, having sold his farm, will sell farm equipment and personal property at public auction on:

Saturday, May 22nd 2021 Beginning at 9:00 AM

Location: Location; 1800 Lyon Road New Haven Mo 63068

Directions: From Interstate 44, take Exit #251-Highway 100 West and go 18 miles through Washington. Turn left (South) on Highway 185 and go 6 miles, then left on Lyon Road to auction. From Beaufort take Highway 185 North 8 miles to Lyon Road. Roads will be marked day of sale.

TRACTORS (tractors and equipment will sell at 11:00 AM)



John Deere 4450 diesel tractor-140 HP-cab-AC-heat-radio-6000 hours-power shift transmission-front wheel assist-front fenders-new tires 18.4-38 Firestone radials-rear weights-dual hydraulic outlets-runs good has weak power shift-dual tires will sell with tractor, suitcase front weights will sell separately, 1586 International tractor-150 HP-cab-heat-AC-radio-3500 hours-20.8-38 Goodyear tires-dual hydraulics-dual tires sell with tractor-TA and clutch need replacing, front suitcase weights sell separately, John Deere 3020 gas tractor-1965-synco range transmission-new tires Firestone 15.5-38-sells with John Deere 148 loader-bucket and bale spear, John Deere front brackets-weights for 3020 or 4020 tractor, (4) 31x15.5-15 skid steer tires, John Deere 720 diesel tractor with pony motor-new rear tires

HAY EQUIPMENT

TILLAGE-GRAIN EQUIPMENT / COMBINE



MO-CO 630 flail conditioner-hydraulic swing-1 owner, John Deere 756 4 basket tedder-hydraulic lift-one owner, Vermeer TD 200-4 basket tedder -hydraulic- fold, John Deere 535 round baler-belt-5'x6' bales-with monitor, parts for round baler, New Holland 256 side delivery rake, Big Bale wagon-holds 6 bales, JD 15' 1508 batwing brush hog with safety chains, **TILLAGE**; John Deere 750 no till drill-dolly wheel, 20' tandem axle field cultivator-with harrow-hydraulic wings, White 508 4-16" semi mounted plow, JD 915 5 shank V ripper, JD 7000 no till planter-6 row-30" rows, JD 235 21' fold up disc-harrow, Kory 300 bushel gravity flow wagon, Brent 420 420 bushel grain cart-hydraulic unloading auger, 8"x60" grain auger, Hardi crop sprayer-500 gallon-40' hydraulic fold spray booms, 12" harrow, 12" sweep auger, 12" Danuser hydraulic post hole digger-fits 148 JD loader, **COMBINE**; John Deere 9500 combine-4WD-diesel-hydrostatic-with chopper-2800 hours on engine-1970 hours on separator, John Deere 920F grain head-20'-will sell separately, Killbros header wagon-sells separately, rear rim for 9500 combine



VEHICLES / TRAILERS / ATVS



1953 Mercury auto-2 door-V8-automatic-no title-parts car, 1994 White Volvo grain truck, 315 HP Cummins engine-10 speed manual-tandem axle with new tires-20" Kann aluminum bed-roll over tarp-600 bushel, 1969 Dodge 500 grain truck-18" hoist bed-for parts, **TRAILERS**; El Paso 16' tandem axle gooseneck livestock trailer, 20' tandem axle flatbed gooseneck trailer-7000 axles-ramps, **ATV**; 2013 Polaris 90CC Sportsman-auto with reverse-electric start-title-runs great, 1997 Yamaha 350CC Warrior-5 speed-reverse-electric start-original tires-one owner-title-runs good, Suzuki 400CC Eiger quad runner-not running-no title, single axle custom made building mover, 16' aluminum storage box, yard trailer

CATTLE / FARM SUPPLIES



Loading chute, head chute, calf puller, portable corral panels, Lil Kreeper bulk feeder, Mirafount 3465 frost proof water fountain, panel gates, galvanized water tank, 40 new 6' T posts, T post driver, fence stretcher, 3 full rolls barbed wire, 2 rolls 39" field fence, 1500 gal water tank, 5' wooden feed box, trough feeders, round bale feeders, halters, gate hinges, **FARM SUPPLIES**; (2) 500 gal fuel tanks, 300 gal fuel tank on stand, chemical tanks, fuel tank stand, (6) metal building trusses, 4" I beam, lot 4'x8' plywood, scrap metal, rake teeth, roller chains, hydraulic cylinders, Cyclone seeder

TOOLS / FARM SUPPLIES

Craftsman metal lathe, metal band saw, 250 amp stick welder, Lincoln 225 amp welder, oxy-acetylene tanks-lease, tank carts, torch sets, welding rods, 14" hvy duty chop saw on hvy work table, 13 HP Honda 3700 PSI power washer, Swisher 6 HP 22 ton log splitter, Ingersoll Rand 220 air compressor, Husky aluminum truck tool box, aluminum extension ladder, step ladder, lot parts bins, Maxx Air fan, drill bits, nuts-bolts-lot hardware, JD battery charger, oil cans, hvy metal shelving, case of freon 12, 2" water pump, Craftsman grinder, sockets, hammers, saws, pipe wrenches, air hose reel, C clamps, vises, bench grinder, tire tools, work lights, fuel transfer pump, gear puller, chain hoist, extension cords, **YARD**; Stihl MS 390 chain saw, yard roller, hedge trimmer, steel traps, live traps, picks, rakes, shovels, pitch forks, post hole digger, chain binders, chains, feed scoops, tow cables, pruning shears, ammo boxes, neck yokes-single trees, 6 door hunting dog box, 6'x6' dog kennel, 2 pop up canopies, tackle box, wheel chair

LUNCH WILL BE SERVED BY BEAUFORT LIONS CLUB

VIEW OUR PHOTO GALLERY ON
www.breheauction.com

BREHE AUCTIONEERING SERVICE, LLC
Union, MO: (636) 583-0841 Owensville, MO: (573) 437-3454
www.breheauction.com
LICENSED AUCTIONEERS:
Kerry Brehe 314.954.3798 Josh Brehe 314.603.3129 Nick Brehe 314.560.7737
Announcements made day of sale supersede all printed material.
TERMS: CASH, PERSONAL CHECKS WITH PROPER I.D., BUSINESS CHECKS WITH BANK LETTER AND NO OUT OF STATE CHECKS UNLESS APPROVED BY SELLER. Email Us At kkauction@sbcglobal.net
Everything sells as is with no guarantees.
Not responsible for accidents.

PUBLIC AUCTION

SATURDAY, MAY 15 @ 9:00 A.M.

Directions: OLD SEARS BUILDING IN SALEM, MO

Located between Parts Tek and Town & Country Bank on Scenic Rivers Blvd. Watch for signs.

22 CALIBER RIFLE COLLECTION

Remington Speed Master, Model 552,
No Front Sight
Chiappa Italy 22 Long Rifle, Rolling Block
S/S Octagon Barrel
Uberti USA Lakefield, Made In Italy,
Rolling Block
Marlin, Model XT22
Remington Sports Master, Model 551
CZ 452-2E ZKM Buck Master, Scope
Nikon
Remington Speed Master 241
Remington Target Master, Model 41
ASA Model 722 Target, 7 Heavy Barrel
CZ 455 Heavy Barrel Discontinued
2018 Tasco Scope
Thompson Center Contender G2 Bushnell
Scope

Marlin, Model 81
Mossberg Tube Fed, Vintage
Marlin S/S, Model 60, Micro Barrel
Mossberg 151 M-B - Mossberg 42 C,
Bolt Action
Tarus, Model 63, Tube Fed
Savage Bolt Action Left Handed
CZ Bolt Action Heavy Barrel
Savage II Synthetic Stock Heavy Barrel
Remington 597 Semi-Auto, H/B
Simmons Scope
Marlin, Model XT22, Grooved Synthetic
Bolt Action
Ruger 10/22 Synthetic Stock, Semi-Auto
Redfield Scope
Marlin, Model 99
Several Lots of Canning Jars

16' Aluminum Canoe
16' Bumper Hitch Trailer w/Title
3 Pt. 6' Disk - 3 Pt. Post Hole Digger
2, 3 Pt. Arena Conditioning Machines
Furniture, Queen Bed
Several Boxes from the Kuennen
(Previous Sale)
Coolers - Collection of Shot Glasses
Set of Lights for Shop
Old Cocks - Cookware

**Lots More Great Items Not
Listed.
-See You There, Tom**



ANNOUNCEMENTS AT AUCTION TAKE PRECEDENCE OVER PRINTED MATTER

WULFF AUCTION

Auctioneers:

Col. Tom Wulff - Col. David Wulff
498 Hwy. B, Salem, MO 65560
573-729-8476

Clerk: Tracy Strange Cashier: Nancy Inman

See Wulff Auctions at www.thesalemnewsonline.com/auctions

TERMS: CASH OR
APPROVED CHECK -
I.D. REQUIRED
NOTHING REMOVED
UNTIL SETTLED FOR

Licensed
Appraisals



RAIN OR SHINE
OWNER & AUCTION
PERSONNEL NOT
RESPONSIBLE
FOR ACCIDENTS AT
SALE SITE



HUGE BUILDING SUPPLY AUCTION

SATURDAY, MAY 15, 2021 10:00 AM

DIRECTIONS: 5 miles West of Fair Play, MO on Hwy. 32 or from intersection of Hwy. 13 & Hwy. 32 in Bolivar, go West 11.7 miles on Hwy. 32 to FR 1750 then West 1/4 mile to sale site.

FLOORING:

Pre-Finished: Hardwood, Engineered (up to 7" wide), 12 mil Laminate

Tile: Great selection of wood look tile from 6x24, 6x36, 8x40, 8x48, up to date colors to choose from

LVT Flooring: Huge amounts of Shaw "Glue Down" (Nice colors), Ridge Core Snap & Lock also avail.

Tools: Lg lot of Flooring & Tile tools

Porcelain Tile: 12x12, 18x18, 6x6. Asp glass tiles

Mosaic Tiles: Lg color selection, excellent for back splash & shower

Kitchen Sinks: Lg selection of SS, Composite, Under mounts

Faucets: Brand name/upscale, SS, Satin, O.R.B, Bathroom/Kitchen/ Shower

Bath Room Vanity & Tops: Gray's/ White/ Brown, Var. Sizes

Toilets: 24 Complete sets, Handicap/ Elongated (Bone color)

Ceiling Fans: Good Selection, 48"-53", some LED

PEX Tubing: Red & Blue, 500' per roll

Mini Splits A/C/Heat: 12,000 BTU/24,000 BTU

Drywall Primer: Primer-Surfacer

Cedar Decking: 5/4x6", 12 & 16' lengths, over 11,000 L.F.

Composite Decking: 5/4x6"x12' PVC Caped

Cedar Siding: 1x8 Bevel, great looking 8, 12, 16' lengths, over 19,000 L.F.

Pine Bead Board: 1x6' Pine (tight knot), 12 & 16' lengths, over 37,000 L.F.

All Wood Cabinets: 3-Full sets of dark gray (will be sold by the set), very nice, pre-finished

Case & Base Molding: Finger joint Pine, 12' lengths, 48 L.F. per bundle

4x4 Post: 12' Douglas fir, smooth finish (very nice) 60+avail.

Cultured Stone: 10-12 Pallets, 200 ft. Per pallet (nice), several different styles

Much more by Sale Time!



Auctioneer's Note: If you are looking for cedar siding or cedar decking, don't miss this auction as they are in short supply. As of now, we can no longer get cedar products. Largest wood look tile we have ever had! 37,000+ of Pine Bead Board! Don't miss out! See you there! **TERMS:** Cash, check, credit card (3% upcharge on CC) with proper ID.



For more info and pictures see Triple M Auctions on Facebook.

Col. James Mayfield • 417-298-8888





Saturday, May 15, 2021 • 9:00 a.m.

LOCATION: In Licking, Mo., on Cedar Street at the old Rawlings Building. Watch for signs.

EARLY START!!

Go to auctionzip.com to view photos. Auctioneer #28367

EARLY START!!

Primitives, Collectibles, Furniture

Wooden Butter Churn on stand w/crank, 5 gal.	Crock Bowl	Banana Split Bowls
Kitchen Table & Chairs	Bird Cage	Tea Light Candles
Cabinet w/16 drawers & top – from old Phelps Co. Courthouse	Iron Pot	Ladies' Torso Bust
Marriage Records Cabinet – from old Phelps Co. Courthouse	Hat Boxes	Clear Glass Marbles
Screen Door from High Town store	Metal Signs	Halloween & fall décor
Old Farmhouse Doors, several	Old Photos & Postcards	Vintage Baby Dolls
Wooden Drawers	Metal Card Holders	Lot Baking Pans – cake, muffin, donuts
Metal Dress Form	Baby Shoes	High Performance Warmer
Louvered Doors	Tin Candle Holders	Pump Dispenser
Farmhouse Chairs	Old Platters, Plates, Cups & Saucers, Teapot	Quilt, hand-stitched
Oak Washstand	Wooden Signs	Wall Shelves
Couch, wood trim	Silver Tea Pots	Plate Holders
Display cabinets, w/glass	Old Medicine Bottles, metal powder containers	Metal Candle Holder
Door w/glass panes	Crystal Bowls, Cake Stands	Decorative Fruit
Tall Shelves	Daisy pattern on Bowls	Metal Igloo Water Coolers
Cabinets w/drawers	Lead Crystal Glassware	Lamps
File cabinets, wooden & metal	Butter Dish w/hummingbird & Spoon Holder	Bottles & metal Holder
Wooden High Chairs w/trays	Ig. pumpkin-shaped Jars	Easter Decor
Wardrobe	Punch Bowl & Cups	Old Door Hinges, Knobs
2 pc. wooden Beanpod Candle Cabinets	Square glass Containers	Family Picture Frames
Wooden Boat w/shelves	Wooden Pill Crusher	Towel Rack
Kitchen Cabinet w/doors	Leather back Western Books (The Townsmen, The Cowboys, The Gunfighters, & more)	Plant Pedestal
Top from kitchen cabinet	Vintage ladies' Hats & Fur Collars	Umbrella Stand
Top from organ – decorative	Shoe Last	Electric Steamer/Cooker
Corner Shelf	Sprinkler Can	Hanging Lights
Coat Rack	Lot Candles, Lillian Rose collection	Stem Glasses
Kraut Cutter, large	Signed & dated plates & platters from Tea House	Leather-bound Menu Holders
Walnut Twin Bed Frames	Metal "Special Today" sign	Doilies
King size 4-Poster Bed, Night Stands & Chest	Tea House sign	Curtains, Bedspreads, Sheers, Throws, Afghan, Pillows, Sheets
Iron Bed Frame	Bavaria set China w/teapot, sugar, creamer, soup bowl, gravy bowl, Haviland	Books – recipe, DIY, gardening, cake decorating
Table w/drawer	Soaps & Lotions – Crabtree & Evelyn	Big Mirrors – wall
Big wooden Chest	Tea set, Pot, Cups & Saucers, Creamer & Sugar	Dirt Devil
Bookshelves	Ice Cream Sundae Glasses	Hedge trimmer
Octagon Table w/4 Chairs on casters		Flowerpots
Premium No. 28 box Woodstove, one cap, Charter Oak		Metal Plant Holders
Couch & Chair		Flowers
		Dress up Clothes – Wedding Gowns, Prom Dresses
		More boxes to unpack!

Note: A lot of nice primitive pieces, more to unbox that's not listed.
Come take a look or view photos on auctionzip.com. Thanks. Steve & Neal

Don & Chris Storm - Owners

Terms - Cash or Approved Check. Nothing Removed Until Settled For. Not Responsible For Accidents.
Must show ID to get Buyers #. Announcements Made Day Of Sale Take Precedence Over Printed Matter.

Buckner & Gately Auction Service **Auctioneers**

Steve Buckner 573-674-2686

Neal Gately 573-202-3132

LARRY DRENON AUCTION

PUBLIC AUCTION

217 NORTH HWY 65 • LINCOLN, MO

The following will be sold at the Drenon Building located on Hwy 65 in Lincoln next to the Ambulance station on:

SATURDAY MAY 22, 2021 • STARTING AT 10 AM

KAREN REINERS WILL SELL THE FOLLOWING:

GUNS AR-15, DTI-15 5.56 mm, Monstrum scope, new in case * Benelli 12 ga, rib barrel, 4 chokes, in case * CZ550 308W w/beautiful Mannlicher stock, 3.9x40 * scope, in wooden case * Marlin XT-17 HMR w/Marlin scope * Smith and Weston model 469 9mm * Ruger 10-22 Carbine 22lr w/Simmons 4x32 scope * Bushnell 10x50 binoculars * Caldwell gun rest, Ear muffs, other misc **SHOP EQUIPMENT and TOOLS** Generac Centurion 5000 Watt Generator * 16 spd Floor drill press * Grizzly 14" band saw * Campbell Hausfeld 6 hp 60 gal air Compressor * Kobalt 9" miter saw on stand * Craftsman double wheel grinder * Craftsman AC230/DC140 Arc Welder * Millermatic Challenger 172 CV/DC wire feed Welder * Craftsman 17 drawer tool cart * 2-40 Bin Nut and bolt cabinets * 3- 5 Drawer Metal Parts Bin cabinets * 4 Drawer Metal Parts Bin Cabinet * Craftsman 6" Belt/9" Disk Sander on stand * Dewalt 20V SawZall * Acetylene welder gauges and cart * Delta 12" Portable Planer * 2.5 hp Skilsaw, in case * Shop fan * Paddle bits, screwdrivers, Furniture clamps, other Small * hand tools and accessories * Air staple gun in case * Rotozip in case * Milwaukee jig saw in case * Dewalt palm sander * MaxxAir fan on stand * Craftsman 1 1/2 hp Router * Craftsman tool box * Weller soldering gun * Power Shot stapler * Lg Columbia vise * Richie Yellow jacket manifold gauge tester * Hilti TE12 Pneumatic hammer drill, and several other * air tools * Drill Master 1/4" trim Router * Troy Bilt 2500 psi Power Washer * 10' Aluminum step ladder * Stihl MS 290 chainsaw * PowerKraft 21 pc Socket set * Punch Set in Metal Case * Dewalt and Milwaukee grinders * B&D Ind. Impact wrench * Craftsman 3" and 4" belt sanders * Ridgid shop vac * 4" Square welding table 1/2" top, on rollers * Delta table saw on wheels * Welding rod **KNIVES** Italy #12 opener knife * Old Timer 980T in case * Camillus USA 3 blade * Old Timer Schrade w/brass lining USA 1807 * Ducks Unlimited Sportsman Folding Lock Knife * Also: * Big Green Egg Smoker * Set of Apex golf Clubs * Fishing rods and reels * JD Seeder, pull behind mower * Roll of Chain link fencing



AS DIANA IVY IS MOVING OUT OF STATE, SHE WILL SELL THE FOLLOWING:

ANTIQUES AND COLLECTIBLES Weather vane with dark blue glass ball * Antique Globe Wernicke Grade 299 Barrister Bookcase * Antique oak 40" square table with massive claw feet * Antique oak drop-front desk * Antique oak library table * 6 Bentwood chairs * Oak vanity * Old telephone bench * Old oak mirror * Antique wooden rake, wooden shovel, and cast iron * kettle, for décor * Red, green, cobalt blue, amethyst, and clear glassware * Vintage hat collection * Old rolling pins * Chinese figurines and other Oriental décor * Elephant collection **HOUSEHOLD** Oak Armoire * 2 Modern barrister-type bookcases * Oak queen size bed * Oak book shelf unit * Oak hall tree * Red couch and two chairs * Oak coffee table and side table * Oak 2 drawer filing cabinet * Pine corner shelf * Chicken décor * Kitchenware, pots, pans, dishes, etc * Lot hardback non-fiction books * Outdoor wicker table and chairs * Manual post hole digger * Flower pots **THE FOLLOWING WILL ALSO SELL:** Western Auto Revelation Model 111 22 lever action * Revelation 410 bolt action * Lot 22, 20 ga, 410, and 20 ga ammo * Knives: 8 Case pocket, Western Horseman pocket in * box, K-Bar pocket, Kutmaster pocket, Buck pocket, 2 * Western pocket, Ulster pocket, Colonial pocket, * Imperial Frontier Hunting Knife in case * New pair Ariat Heritage Roper boots, size 10 1/2 EE, new * in box, never worn



KAREN REINERS & DIANA IVY

Larry DRENON AUCTION

Larry 660-596-8515 Laramie 660-221-4386
Lacey 660-723-1104 Cooper 660-723-2221

Office: 660-723-6188
www.DrenonAuction.com

Terms: Cash, approved check, debit/credit card * (convenience fee applied). Nothing to be removed until * settled for. Not responsible for accidents should any * occur. Statements made day of sale take precedence over printed material. Lunch served

PUBLIC AUCTION

Saturday May 15 at 10:00 am
16309 Tom Akers Road, Eminence MO.

Directions from Mtn View MO: 60 Hwy to Winona, North 19 to Eminence to Bridge. It's near Shady Lane Resort. Watch for Reid Auction signs.

ANTIQUES-COLLECTIBLES-MISC.

Over 75 Pieces of Stone Ware, Red Wing, (zinc & salt glaze), Blue Band, Illinois Monmouth and a variety of other makers. Pickle Jars, Water Coolers, Tea Cooler, Churns, #2, #6 and Misc Crocks, McCoy Aunt Jemima Cookie Jar, Singer Treadle Sewing Machines, 301 Singer Sewing Machine, Metal Blade Oscillating Fan, Copper Washer, Large Kraut Cutter, Hand Saws, Antique Magic Chef Cook Stove, Kerosene Cook Stove, 2 Wooden Antique High Chairs, Over 40 Pieces Cast Iron including Griswold & Wagner. Several Baby Prints including Bessie Pease -Guterman, Original of Custer's Last Stand by Anheuser-Busch Co., Fish Trap, Old Sewing Rocker, Antique Ribbon Counter from Leeper Mo Store, Picnic Baskets, Local Made Kitchen Cabinet, Old White Cabinet, Croquet Set, Barn Wood Bench, Spitton, Granite Pans, Child's Metal Shopping Cart, Child's Rocker, Old Cradle, Old Bassinet, Antique Toys, Egg Crates, Library Table, Old Suitcases, Antique Bedroom Set, Metal Bed Frame, Metal Kitchen Cart, Step Stool, Glass Jars, Antique Seed Cleaner, Cigar Maker, Old Christmas Stands, World Globes, Metal Roller Skates, Bee Smoker, Railroad Light, 10 lb Clabber Girl Baking Powder Tin, Krey Lard Bucket, Keen Cutter Tools, Coffee Sign, Misc Tins, and much more.

GUNS

Browning A Bolt 3 .300 Caliber, Winchester XPR 300 Caliber, Browning X Bolt 7mm, SPA Luigi 20 Gauge, 12 Gauge Remington 1911 Wild Turkey Federation Edition, Knight Wolverine 50 Caliber Black Powder w/Scope.

FURNITURE-MISC

Washer, Dryer, Electric Range, Chest of Drawers, Magazine Rack, Leather Top Desk, Sofa, 2 Matching Love Seats, Wicker Shelf, Green Hutch, TV Trays, Christmas Misc., Round Dining Table, Folding Chairs, Craft Items, Books, Ice Cream Freezer, Lawn Chairs, Boat Cover, Propane Bottles, Coolers, Mail Box, Metal Shelves, Golf Clubs, Mattress, Candy Dishes, Misc Dishes, Coffee Decor, Linens, Picture Frames, and lots not listed

TRAILER-TOOLS-MISC

5x10 Tilt Utility Trailer, DR Trimmer, Ariens Rear Tine Garden Tiller, Yard Seeder, Shovels, Rakes, and Misc Hand Tools, Tail Gate Extender, Misc Lumber.

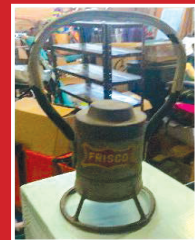
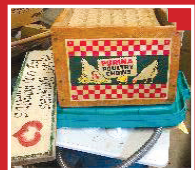
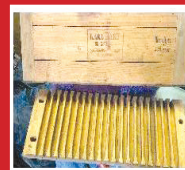
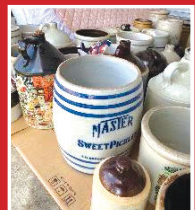
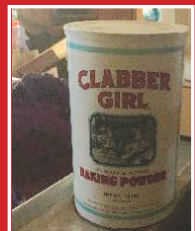
Auctioneers note: This is just a small list. There is one shed that hasn't been sorted. So, come and spend the day with us. This auction is packed with Antiques and Collectibles! Check Auctionzip for more pictures Friday evening

Jeanie & the late Jim Anderson, owners

Reid Auction Service

Randy Reid 417-257-3911 • Rex Reid 417-372-1866 Ark. Lise. #2606 • Ted Reid 417-256-6661

Concessions & Restroom available. Any announcements made day of sale supersedes any prior written or oral communications. Cash and checks accepted no Credit Cards



REAL ESTATE

Auction

**Wednesday, May 26, 2021
at 5:00 p.m. • Lebanon, MO**

Directions to Auction Location: From North Jefferson Street (State Highway 5) in Lebanon, Missouri, turn West onto West 4th Street for 0.6 miles, turn right on Garfield Street for 0.2 miles, then continue onto New Buffalo Road. The auction will be on the right. Watch for signs the day of the sale.



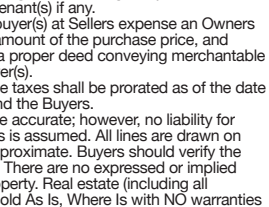
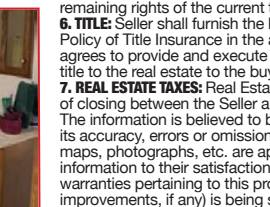
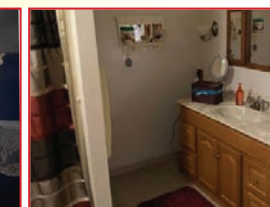
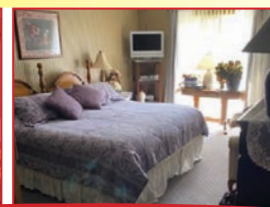
The real estate will sell promptly at five o'clock. If you would like to schedule your personal showing, please call Scotty at 573-356-4405.



In a quiet, park-like setting back in the trees, this conveniently located 3 bedroom, 2 1/2 bath, brick ranch style basement home is located on 0.83 acres just minutes from shopping and schools, 12 miles from Bennett Spring, 30 miles from the Lake of the Ozarks and one hour from Branson, Missouri. This beautiful home has an updated kitchen with stainless steel appliances, laundry room, larger primary suite with walk in closet, bath and patio access. The 1,940 square foot home includes newer floor coverings throughout and the roof has been replaced within the last year. The home has electric heat, central air and an attached 2 car garage with a half bath and extra storage. There is also a 24' x 24' detached, insulated, one car garage with electricity.

Real Estate Terms & Conditions:

- 1. PROCEDURE:** In the first round of bidding, the property will not be considered "SOLD" but will be considered "PENDING". The auctioneer will meet with the seller and then the property may be opened back up for additional bids.
- 2. ACCEPTANCE OF BID PRICES:** Winning bidder will enter into a Contract to Purchase immediately upon being declared the Successful Bidder by the Auctioneer. The Seller reserves the right to reject any and all bids. Once accepted, this agreement shall be binding on the parties and their successors and assigns. This agreement is NOT subject to financing, inspections, or other contingencies that delay the closing for any such reason.
- 3. DOWN PAYMENT:** 10% of the contract purchase price will be due upon acceptance of the Sales Contract. Personal or Cashier's Checks will be accepted. This is "AS IS, WHERE IS" and is non-refundable.
- 4. CLOSING:** Closing shall be within 30 days of the auction date.
- 5. POSSESSION:** Possession will be given at closing, subject to the remaining rights of the current tenant(s) if any.
- 6. TITLE:** Seller shall furnish the buyer(s) at Seller's expense an Owners Policy of Title Insurance in the amount of the purchase price, and agrees to provide and execute a proper deed conveying merchantable title to the real estate to the buyer(s).
- 7. REAL ESTATE TAXES:** Real Estate taxes shall be prorated as of the date of closing between the Seller and the Buyers. The information is believed to be accurate; however, no liability for its accuracy, errors or omissions is assumed. All lines are drawn on maps, photographs, etc. are approximate. Buyers should verify the information to their satisfaction. There are no expressed or implied warranties pertaining to this property. Real estate (including all improvements, if any) is being sold As Is, Where Is with NO warranties expressed or implied. Please make all inspections and have financing arranged prior to the end of bidding.



**28251 US HWY 63 N
Macon, MO 63552
Phone: 573-356-4405**

**www.scottysauctionservice.com
scottysauctionservice@gmail.com**

Wendell Shockley & Family Estate Auction
 ~ Antiques ~ Household ~
 Vintage Cars ~ Car Parts

ESTATE AUCTION

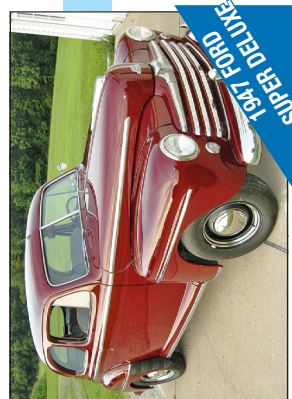
SATURDAY, MAY 15, 2021

1136 Hwy. 28 West • Bland, MO 65014

2 RUNNING 2 DAYS! All Day!

9:00AM SHARP!

DIRECTIONS: From Bland Mo. Take Hwy 28 west approx. 2 miles to the farm on the left. From Belle Mo. take Hwy 28 East approx. 2 miles to the farm on the right. (Located approx. half way between Bland and Belle along Hwy. 28).



~ **VINTAGE CARS** (will sell around 2:30pm) ~

Preview of CARS ONLY on Thursday May 6th 3:00pm – 7:00pm

1938 Buick Century Street Rod ~ 1941 Ford 2 Door Sedan Super Deluxe ~ 1947 Ford 2-Door Sedan Super Deluxe ~ 1948 Pontiac 2-Door Streamliner Street Rod project ~ 1952 Ford Custom Line 4-Door Street Rod project ~ 1957 Ford Fairlane 500 convertible project car ~ 1975 Pontiac Grandville Convertible original owner 23k miles ~ 1948 Ford 2 door sedan coupe street rod ~ 2004 Z71 Suburban 62K miles One Owner! ~ 2004 Ford F150 5.4 L engine/transmission assembly, along with misc. parts, from a show car build truck. Only 6 miles (SIX MILES)!

VINTAGE CAR PARTS/ETC.

(We will start the car parts auction ring around 1:00am)

1955 Mercury Station Wagon Tail Lights ~ Lot of 1941 Chevrolet car parts to include grill, hubcaps, gages, trim and misc. ~ Lot of 1941 thru 1948 Ford car parts to include hubcaps, gages, trim and misc. ~ 1954 Pontiac Grill Bars ~ 1940 Ford Instrument clusters ~ Set of 1951 Mercury original factory metal fender skirts ~ Set of 1951 Mercury Foxcraft cut down metal fender skirts ~ 1949 and 1950 Chevy factory metal fender skirts ~ Full set of 1941 Ford sedan new old stock Fenders, 2pc. Fenders ~ 1949 Ford 2 door sedan Left quarter panel (new old stock) ~ 1965 Impala 327 4 barrel engine assembly with later Holly carb. ~ Ford 1947/48 Sedan Right front fender ~ 1948 Ford car flathead 6 cyl. Engine ~ Late 60's Chevy 6 cyl. Truck motor ~ Lot of 1990 Mercury Grand Marquis trim items ~ 1949 thru 1951 Ford Trim parts ~ 1957 Ford 300 rear bumper ~ 1956 Mercury assorted trim parts ~ Set of 1941 Chevy bumper guards re-chromed ~ Various hood ornaments ~ Chevy 1953 to 1955 radio delete plates ~ 1959 Buick Wheel covers ~ 1955 Olds Fiesta wheel covers ~ 1961 and 1962 Impala SS wheel covers ~ 1941 thru 1948 Ford hubcaps ~ Early 60's 348 Tri-power ~ Assorted vintage bumper jacks and screw jacks ~ New old stock 1966 Corvette front license plate bracket ~ 1965 to 1970 Ford Master parts catalog ~ 1961 Delo Remy service manual ~ Assortment of engine fans various years ~ Assortment of window regulators various makes and models ~ 1946-1948 Ford front floor pan cover ~ Assorted flat head Ford clutch and ignition parts ~ (5) new old stock flat head Ford cylinder sleeves ~ Vintage KD mfg. flat head Ford spring compressor tool ~ Flathead and Y block air cleaners ~ mid 60's GM shifter ~ Assorted 50's and 60's steering and suspension components ~ 1946 to 1948 Ford brake components ~ New aftermarket 1928 to 1948 Ford Super-Bell spindles and steering arms ~ 1941 Chevy shock absorbers ~ flathead Ford radiators ~ Pair of 1946 Ford business coupe or sedan doors (rust free) ~ Large lot of auto enthusiast ligature and vintage Hot Rod, Motor Trend etc. magazines ~ 1970's cb radios ~ Large assortment of automotive radios 1940's thru the 70's ~ assortment of 6v and 12v horns ~ Lot of 4 way lug wrenches and bars ~ 1940's and 50's under dash heater boxes ~ under seat heater (47 or 48 Pontiac?) ~ 40's and 50's window garnish moldings ~ pair of Magni-Flo aftermarket mufflers 2 1/2" exhaust ~ assorted door and window handles ~ 1948 Ford tube shock conversion ~ various exterior and interior mirrors ~ Flat head Ford carburetors and fuel pumps ~ assorted factory and after market gages ~ 1948 Ford cross member ~ lot new 1941 rubber gaskets ~ lot new in box replacement parts such as oil filters, distributor caps, air filters, etc. ~ various vintage lighting accessories ~ 1941 Chevy factory fog lamp assembly ~ pair of vintage aftermarket fog lights ~ 1940 accessories GM spotlight ~ **Much, Much More!**

type swivel rocker/recliner ~ Zenith 23" flat screen TV ~ 2011 Toshiba 46" flat screen TV and stand cabinet ~ Kimball Swinger Deluxe" The Entertainer" organ ~ Schwinn Air Dyne Exercise bike ~ White Wicker tea cart ~ White wicker rocking chair and arm chair ~ 1980's Barbie Dolls all in orig. Boxes ~ Veneered 2 pc. Lighted china cabinet measures 4'6" x 16" x 80" tall; Remington

ANTIQUES ~ SILVER ~ GUN COLLECTIBLES ~ JEWELRY

Speed Master Mod. 552 .22 rifle S# 1693544 (very good condition) ~ Dakusel Tel. and Elec. Mfg. St. Louis Mo. Oak double box telephone with ringer box, was in the Strain Store Summerfield Mo. ~ Type Setter printers tray and printer blocks from the Tri-County newspapers of Bygone days ~ oak glass front book case ~ oak ice box ~ Player Piano in working order mfg. by The Cable Company Chicago IL. ~ Lot of vintage jewelry and watches to include a Bovet 14 k gold and diamond 17 jewel ladies watch ~ The Sturdy bracelet pat. 1905 in orig. box gold filled ~ (5) 1921 Morgan dollars ~ (4) Peace dollars ~ approx. 75 Kennedy 1/2 dollar clad ~ some silver dimes and quarters ~ (48) one dollar silver certificates ~ (2) 1964 silver proof sets ~ lot other mintage coins and paper money ~ UNC. Walking liberty half made into jewelry pc. ~ 1882 Morgan dollar used in a 24k gold plated paper weight ~ Rogers Sterling Silver "Sculptured Beauty" 48 pc. Flatware set in case ~ Sterling Silver brush set ~ large lot of Jadeite Fire King glassware of all kinds ~ lot of Blue Fire King ~ lot of Miss America clear depression glass ~ ~ AAA Auto Club Missouri License Plate Topper ~ UNC. Walking liberty half made into jewelry pc. ~ 1882 Morgan dollar used in a 24k gold plated paper weight ~ Rogers Sterling Silver "Sculptured Beauty" 48 pc. Flatware set in case ~ Sterling Silver brush set ~ large lot of Jadeite Fire King glassware of all kinds ~ lot of Blue Fire King ~ lot of Miss America clear depression glass ~ lot of Blue moon and stars glassware ~ Lot of depression glass various colors and patterns ~ Lot china ~ some leaded glass pieces ~ lot of vintage green and cream porcelain ~ lot green handled kitchen tools ~ Oklahoma frosted pitcher and tumblers of famous Indians promotional item from Knox oil co. (2) Fire King strawberry nesting bowls ~ QUILTS: Double wedding ring, Log cabin ~ sun bonnet ~ fan wheel ~ star quilt and others ~ 1 qt. oil jar ~ some vintage cookie cutters ~ 6 gal. Western crock ~ 2 gal. Western Jug ~ vintage cracker jar ~ flat top trunks ~ Serpentine front tall dresser ~ Walnut head board and frame and other older beds and dressers ~ Secretary cabinet ~ oak mission style rocker and other rockers ~ Edison mod. R200 Phonograph and lot phonograph records ~ lot plated vintage silver service ~ sewing box and notions ~ Zenith Tone Register radio and record player mod. 6r880A ~ picnic baskets ~ oak fern stand ~ glass insulators ~ Vidrid Products green depression glass 2 qt. electric mixer/beater ~ Tonka pressed metal toys ~ metal doll house and furniture and other vintage doll houses ~ 2 galvanized wash tubs ~ REM originals 1972 hand painted porcelain liquor decanter Spirit of St. and the Winnie Mae planes ~ small lot of local find arrowheads ~ Lionel #27 train engine ~ 1970's child's items ~ 1970's Coca-Cola trays ~ lighted Strohs beer sign ~ dress patterns ~ cream can ~ vintage bar stools ~ mid-century drop leaf table and other mid-century items ~ Texaco Fire King porcelain sign ~ 1930's A.C. Gilbert lead toy Kaster kit w/ toy molds ~ iron wheel horse cart ~ Vintage Barbie case & clothes;

ALL TYPES OF GOOD CLEAN HOUSEHOLD AND EVERYDAY USE ITEMS!

Visit AuctionZip.com and enter auctioneers Id# 19088 for complete auto parts listing and pictures.



Find this auction on Facebook at:
Arnold's Auction Service

AUCTIONEERS NOTE: This is a VERY LARGE VOLUME AUCTION! We'll be running 2 rings most of the day! Plenty of room for parking so bring your trailers!!

Terms: Cash, (Credit & Debit cards will be charged a 3% convenience fee.) Check w/ proper ID, all checks over \$2,000 must be accompanied by an original irrevocable bank letter of guarantee (no copies), unless pre-approved by auction company.

Total Sale Management
• Construction - Farm Equipment
• Shop Equipment
• Real Estate
• Liquidations ; Antiques
Auctioneers:
Eddie Arnold & Joe Sherman
Ringman: Larry Arnold
& Terry Crider



Not Responsible for Accidents or Theft
• Terms: Cash or Check (ID required)
• Nothing to be Removed Until Settled for Everything Sells As Is
• No Sale too Large or too Small
• All Announcements Day of Sale Supersede Printed Matter
573-437-2433 ; 573-205-0209 Cell
1761 E. Forest Lane - Owensville, Mo



TOOLS ~ CAR TRAILER ~ MISC.

Homemade tilt deck drive on 15' x70" car trailer ~ Insulated well house built by Hilkemeyer's Freeburg Mo. ~ (6) 4'x8' sheets of 1/4" steel tread plate ~ Like New DR Roto Hog Power tiller 36" with Briggs motor ~ John Deere 10 utility garden dump trailer ~ Old heavy duty Superior drill press with 1 h.p. dual voltage motor was converted from a shaft belt drive commercial type ~ 2 cherry pickers ~ lot of open and box end wrenches various sizes from small to 2" ~ Cyclone leaf bagger vacuum and trailer ~ Scat sand blasting cabinet ~ 1 ton Coffin trolley elec. Hoist w/ trolleys ~ Delta 12" Miter saw ~ TEO 2 1/4 ton floor jack ~ grease barrel pumps ~ 8 ft. work bench ~ 6 ft. work bench w/ Cleveland vise and good older Craftsman bench grinder ~ King Rex mod. 16SP 1 h.p. power hack saw ~ Stihl Fs-55 weed eater ~ partial spoils of 1/2 and 5/8" steel cable ~ grinding wheels ~ pvc pipe fittings ~ galvanized funnel w/screen ~ lot corded tools ~ car ramps ~ galvanized pet feeder ~ hammers, pry bars, etc. ~ (5) rolls of 3' x100' silt fence ~ small lot of orange snow fence ~ LOT OF MISC SHOP ITEMS: "Jazzy" Pride mobility products mobility chair in perfect working condition has new batteries ~ Thomasville double column Dining room table with China cabinet, buffet and matching end tables ~ 1970's King size bedroom set ~ Full size bed frame and mattress ~ twin beds ~ leaded glass lamps ~ dressers ~ quilt racks ~ lot of misc. pots and pans etc. ~ new pressure canner and jars ~ wall pictures and decorations ~ Leather

HOUSEHOLD ~ MOBILITY CHAIR

CLARK ABSOLUTE FIREARMS AUCTION

Saturday May 22nd • 10:00 AM

3215 Highway 19 N • Owensville MO 65066

In Owensville MO, from the intersection of Hwy 19 and 28, "by Walmart" turn North on Hwy 19 and go approximately 2.5 miles to farm entrance on the left. Auction route will be well marked on sale day. Catering & Refreshments by Dutch Mill.



LONG GUNS

Browning Medallion Safari w/ Weaver k4 338 win mag
Browning Arms BT99 Single barrel Trap Grade III Nitride Finish & Adjustable stock
Winchester Model 70 featherweight 243cal w/ Weaver K10 scope
Ruger 10/22 Custom w/ walnut thumb-hole stock and Magnum research receiver
Colt Walther Arms AR Carbine 22lr
Remington Model 760 Pump 35 Whelen
Browning Bar-22 semi-auto w/ Redfield 4x scope
Sako Finnbear L61R 30-06 w/ Redfield 3x9 scope
Ruger American BA 22lr
Remington Model 700 BDL Heavy Barrel 222cal w/ Redfield Target scope
Stevens Model 311 16ga Double
Bushmaster AR15 223cal Pre-ban
Winchester Model 1300 12ga Home Defender NIB
US Springfield Model 1873 Trap Door 45-70cal
JC Higgins Model 31 semi auto 22lr
Marlin Model 336 Zane Grey 30-30
Ruger Hawkeye BA in 204cal with Leupold VX3 4.5x14 scope
High Standard Sport King semi auto 22lr
Winchester Super X 12ga Magnum semi auto
Stevens Model 512 O/U Gold Wing 12ga
Mossberg and Sons BA 22lr
NRA Special .177 pellet rifle w/BSA scope
Mossberg and Sons Silver Reserve 20ga O/U
Marlin Model 39 Lever Action 22lr
Ruger Mini 14 Ranch Rifle Stainless 223cal
Fox Model B 12ga Double
Fox Model B 20ga Double
Marlin Model 783 BA with w/ Nikon Prostaff scope
Browning A5 Invictor 12ga 3" Mossy Oak Breakup
BSA-MCO 1875 Snider Carbine .577cal

Remington Model 1879 Rolling Block rifle 7mmcal
Mossberg and Sons Model R 22lr BA
Winchester Super X Home Defense Pump 12ga 3"
Ruger 10/22 Custom w/ laminate stock & Leupold 3x9 scope
TC Montgomery 12ga Double
Mossberg Model 590 12ga pistol grip Home Defense
Baikal MP-220 20ga Double Coach Gun NIB
JC Higgins Model 101-16 22lr
Ruger 10/22 Custom benchrest w/ Thumbhole stock & scope
BSA Martini 22lr w/ Weaver scope
Marlin Model 883 Stainless NWT edition 22wmr
Remington Model 700 Special Purpose 22-250 Heavy barrel
Mossberg 930 Jerry Miculek Pro series Competition 12ga
Euro Arms Kentucky 45cal Flintlock made in Brescia Italy
Remington VersaMax 12ga Tactical semi auto
Mossberg 556 series MVP 223cal BA with Barska 4x12 scope
Springfield Garand 30-M1 30-06
Ruger 10/22 with hardwood stock
Daewoo AR style 223cal semi auto
Marlin 336cs w/ Bushnell 3x9 sportview scope
Remington 870 20ga Magnum
HANDGUNS
North American Arms Guardian 32ap
Ruger Mark IV Hunter stainless 22lr semi auto
S&W Model 29 nickel 44mag
Ruger Single Six 22mag with holster & 22lr cylinder
Desert Eagle 357 auto Magnum Research w/box and all paperwork
Beretta U22 Neos 22lr w/box
Taurus Tracker Revolver 17HMR
S&W Victory 22lr semi auto
Ruger GP 100 stainless 22lr revolver
S&W Model 10-8 Highway patrol 38spc w/box

Ruger Mark II 22lr semi auto target
German-made Derringer Mississippi Model 22lr
Ruger Mark III stainless Target
Browning Buckmark Rosewood VDX 22lr semi auto
Cobra CB Derringer 38spc
North American Arms Derringer 22lr w/ mag cylinder
Ruger Mark I 22lr semi auto
Walther P22Q 22lr semi auto
High Standard HD Military 22lr Semi Auto
North American Arms WASP Derringer 22mag & 22lr cylinder
S&W DA Revolver w/mother of pearl grips 32S&W long
Bersa Thunder 380cal semi-auto
High Standard Supermatic Citation Model 106 Military 22lr
Ruger Hunter New Single Six 22mag & 22lr cylinder
Wisho-Kg Erlangen semi auto 25cal
S&W K-Frame 17-2 revolver 22lr
Ruger 22-45 Mark IV LITE TE stainless
Ruger GP 100 Stainless 357mag
Ruger 22-45 Mark III Blued 22lr
High Standard The Victor target pistol 22lr
Taurus Model 941 stainless 22mag revolver
High Standard Sport King 22lr semi auto with box
S&W Model 41 22lr semi auto with original box
Ruger Hunter / Target Mark III 22lr semi auto
S&W Model 617 Nickel 22lr CTG 6"
Ruger Mark III w/ Custom Tactical Solutions Pac Lite barrel 22lr
S&W 380 Bodyguard (no clip)
Ruger SR22 22lr semi auto
North American Arms 22mg Derringer
High Standard Sport King 22lr semi auto
Smith & Wesson Model 629 nickel 44mag
Ruger 22-45 LITE Copper 22lr semi auto
Sig Sauer P226 9mm
Few older handguns for repair



Payment Terms: CASH, CHECKS WITH PROPER ID UP TO \$2,000.00. NO OUT OF STATE CHECKS, NO CREDIT CARD CHECKS, NO MONEY ORDERS AND NO TRAVELERS CHECKS. WE ALSO ACCEPT MASTER CARD, VISA, DISCOVER CARD, AMERICAN EXPRESS AND DEBIT CARDS ACCEPTED. ALL CARD PAYMENTS WILL REQUIRE A 4% PROCESSING FEE. NOTE: M R CLARK AUCTION AND STAFF, WILL NOT BE HELD LIABLE IF THE ELECTRONIC CARD READING SYSTEM IS UNABLE TO READ OR PROCESS YOUR CARD FOR ANY REASON. YOU WILL NEED TO PRESENT CASH.

BANK LETTER OF CREDIT REQUIRED FOR ALL CHECKS OVER \$2,000.00. **ON ORIGINAL BANK LETTERHEAD-NO COPIES.**

TERMS: Photo registration. Nothing to be removed until settled for. Everything sells "As Is, Where Is, Without Warranty." Not Responsible for accidents. Announcements made day of auction supersede printed material. Lunch will be available.

See this auction listing on our website: www.mrclarkauktion.com See many photos of what we are selling on Auctionzip.com Our auctionzip ID# 3218

Auctioneer's note: As always, we appreciate your attendance! Mike, Julie and the Whole Auction Team.

M.R. CLARK AUCTION & APPRAISAL LTD

WASHINGTON, MO 63090

636-390-2220 • 314-650-7317

E MAIL: headsugolf1@gmail.com • www.mrclarkauktion.com

CAGA
Certified
Appraiser

Lunch will be available.
See this auction listing on our website:
www.mrclarkauktion.com

Lunch will be available.



HARGUS FARMS Farm-Shop Equipment Dispersal AUCTION

Saturday, May-22 - 10:00AM

1800 Whitetail Road • Elkland, MO

Directions: From Exit 100 I-44 in Marshfield, follow Hwy 38 west 13 miles to Elkland, MO. From Elkland proceed West on Hwy 38 ½ mile to Hwy AA. Follow Hwy AA 1 mile to Whitetail Rd. Follow Whitetail road South 1 mile to sale site.



1650 Oliver gas Tractor
1955 Oliver diesel Tractor
Massey 175 Tractor w/ Loader - bale spike - bucket
Vermeer Round baler 554 Kicker wheels - XL series
Vermeer WR20 8 wheel rake
9ft Disc Mower

3pt 2 bottom plow
Slide in livestock bed
7mm 30mm combo wrenchs - Craftsman
1 1/8 - 1 1/2 combo wrenchs - Craftsman
7mm - 30mm assorted combo wrenchs
Craftsman multifit wrenchs
DeWalt cut off saw
5000 lb Electric winch
Tap & Die set
DeWalt 4 1/2" grinder
Hitachi cordless drill charger & Battery
Large wrenches
Snapper riding mower
Plus Craftsman and other name brand wrenches
and sockets • Power hand tools in excellent
condition
2 Large Buildings full of Top quality tools



Massey Ferguson 110 manure spreader
Landpride 10ft Bush hog
Squeeze chute on wheels
Hay rake Massey Harris SD 3 pt
4 wheel hay wagon steel bed
1979 16ft Gooseneck brand livestock trailer
1982 20ft gooseneck flatbed trailer
2007 16ft Flat bed bumper trailer w/winch
2005 Cub Cadet 4x2 utility vehicle (less than 5hrs
on engine)



Miller Bobcat Welder/generator Model 225
Craftsman 20511 Mig Welder
Honda Rancher ES 4 wheeler 4x4
Lincoln 225 Amp welder
Industrial Air compressor 60gal
Pressure washer - Honda
Oliver 324 garden pulling tractor Kohler 301A
engine-new tires



Floor drill press • Bench drill press
Hammer drill with bits
Stihl Chain Saws • Pipe threader
Black & Decker 3/8" impact wrench
Electric fuel pump
12 ton press • 2 ½ ton floor jack
Bulk feed bin • 2 basket tedder
Grain drill Massey Ferguson 13 hole
3pt bale forks
Landpride 6ft finish mower



Hoover Case - Auctioneer • 417-859-3204 or 417-844-6020

MJ Johnson - Sale Manager • 417-838-0291

Go to www.caseauction.com for complete listing • auctionzip.com ID#24071

Terms: Announcements made sale day take precedence over all printed material. Neither Case Auction or Property owner guarantees the absolute accuracy of supplied information. Payment: Cash or Check with ID accepted.

Real Estate & Personal Property Auction

Charlene Case and the late Arlis Case & Harley Lawson

Saturday May 15, 2021 @ 10am

Location: 929 Country Club Drive West Plains, MO **Directions:** From Highway 63 go West on CC highway to a left on Country Club Drive follow to property on right-watch for Tooley Auction signs.

REAL ESTATE

Very well kept 2 story home sitting over a full finished walkout basement. Brick, rock & vinyl siding. 4 bedrooms, 3 and a half baths, formal dining room, 3 fireplaces, 3 living areas, 2 laundry/utility areas, additional kitchen in basement, covered concrete front porch, rear partially covered deck, 2 car attached garage, stair lift. Windows, roof, vinyl siding, soffit & fascia have been updated recently. This property features beautiful landscaping and a beautiful hill top view of the country club in a prestigious neighborhood. **NOTE:** Buyer must have all financial arrangements made prior to auction. No contingencies shall be allowed. Buyer to do due diligence. Buyer must provide 10% earnest money day of auction with balance due at closing in approximately 30 to 45 days. Real Property is currently listed in real estate and will be offered at auction should it still be available. Real property to sell with owners consent. For more information on real property contact Bonnie Setliff @ 417-224-6269 or Travis @ 417-293-6909

FURNITURE & HOUSEHOLD

Amyx oak claw foot table w/chairs; Duncan Phyfe side tables; multiple solid oak curio cabinets, lighted; oak electric fireplace; cherry vanity bench; cherry side tables; Bi-centennial solid wood dresser w/mirror; Lane cedar chest; queen bed w/2 nightstands, mirrored dresser; Athens cherry mirrored dresser, chest of drawers & 2 nightstands; couches, 1 w/recliners; coffee & end tables; 5 pc. dining table and chairs; ornate wood book shelf; GE dishwasher, white & works good; Jazzy electric wheel chair; asst. of quilts, some hand stitched; radiator heater; various wall pictures & décor; entertainment center; floor & table lamps; cookbooks, Gooseberry, Taste of Home, Southern Living; asst. linens; Christmas décor; all kinds of kitchen ware, pots, pans, silver ware, coffee pots, keurig, various small appliances; VHS tapes; 7x50 binoculars w/case

ANTIQUES & COLLECTIBLES

Wagner aluminum steak platter; Griswold cast corn bread pans; Griswold skillet ash trays; Wagner skillet ash trays; Bob Butler's (motels, stoves & furniture inc. West Plains, MO) mini cast skillet; German wooden liquor barrel, 128 liter; large cast kettle w/wagon rim hanger; iron implement wheels; #8 crock; old well bucket; vintage doll collection, new in box; Vaseline oil lamp; Hull pottery; Fenton glass; depression glass; milk glass; American Beatui lamp w/22 kt. Gold trim; Pyrex, various patterns (friendship, wheat, pink gooseberry, olive, chip & dip set); large collection of Emmett Kelly figures, new in box & hand signed by Emmett; NSMCO cast sewing machine w/table, model RBR; smaller oak & glass wall displays; several Precious Moments figures, new in box; Norman Rockwell figures w/boxes; Regulator hanging clock; Norman Rockwell & March of Dimes collectors plates w/boxes; Hummel figures & plates; older solid wood rocker, heavy; wide collection of KISS, Elvis Presley, Harley Davidson & Marilyn Monroe (framed pictures, plates, books, clocks, lava lamps, metal signs, various other collectibles new in box); Coke collectibles; crystal & lead crystal; Japanese dishes; Strawberry dishes; 4 pc. setting Poppycock dishes; Dallas Cowboys & Harley Davidson leather coats; M&M collectibles, new in box; pocket watches; old powder horn; vintage paper weights; older postcards; antique & glass reference books

GUNS, KNIVES & COINS

GUNS: Weatherby Mark V 300 magnum bolt action Bi-centennial, #15 of 1000 made, w/hard case, mint; Weatherby Mark V 300 magnum bolt action Bi-centennial, #16 of 1000 made, w/hard case, mint; Weatherby 1976 Mark V Crown Custom bolt action w/scope, only 1000 made, w/hard case, mint; Winchester 30/30 lever action, Model 94AE, NRA Edition, 84 of 300 made, w/case, mint; Marlin 30/30 lever action w/scope Model 3030, Diamond Jubilee Commemorative, w/case, mint; **Knives:** Case 1996 stag, Case 1989 curly maple; Case 1982 Sho Me trapper, 150 made; Case 1994 mini trapper, Country Days, 25 made; Case 1984 Congress bone, Collectors Club; Case 1986 5th anniversary Collectors Club; Case 2004 chestnut; Case 2006 trapper, ultra violet; Case Orange County Choppers Collector; Case 1992 Commemorative Election Set; Case USA Edition Set; Case Coke Set; Harley Davidson Collector, made in USA; **COINS:** 62 Eisenhower Silver Dollars, 1971, 1972, 1974, 1978 & Bi-centennial; Eisenhower Bi-centennial silver dollar 24 karat gold plate; 3 pc. Bi-centennial set, \$1, 50 cent & quarter; 40 Kennedy Liberty Bi-Centennial halves; full state quarter collection set with map & certificate of authenticity

OUTDOOR, LAWN & GARDEN, MISC.

5 pc. patio set; outdoor glider; concrete bird bath; MAXXIS M3 225/60/R16 tires, only a few miles on them; electric weed eaters, hedge trimmers, leaf blower; Craftsman 2500 PSI pressure washer, near new; BBQ grills; wrought iron shelves; garden hand tools; ladders; wheelbarrow; some lumber

Auctioneer Note: Very well kept home across from the country club with a beautiful view. Super clean personal property with mint collectors guns, knives and coins. Must see guns and knives to appreciate. Guns and knives will not be available until auction day. To view real estate before auction day call Travis @ 417-293-6909 or Bonnie Setliff @ 417-224-6269. Real Estate to sell at noon and guns to follow. Add to cash or check at the bottom *credit/debit cards(3% fee applies to card use)



Travis Tooley, Auctioneer
Bruce Scheets, Auctioneer



Drivers license or photo ID. Cash or check.
Announcements made on the day of the sale take precedence over any printed material. Not responsible for accidents, theft or lost articles.



Tooley Auction Services, LLC

417-293-6909 • Willow Springs, MO • tooleyauctions@gmail.com

Clerks & Cashiers: Penny Tooley, Shelly Cauldwell & Barb Schumacher

Ringmen: Vance Farmer, Terry McCallister & Josh Wheeler

Hickory County's **BEST KEPT SECRET!**

**While the other
stores are out of stock,
WE'VE GOT WHAT
YOU'RE LOOKING FOR!**
Hickory County's best kept
secret, and the Ozark's
BEST PLACE TO SHOP.



WWW.OZARKBID.COM



ONLINE AUCTION ENDING EVERY SUNDAY NIGHT @7PM

Online
CRAWFORD
Auction Service LLC

Register and bid online
@ **www.OzarkBid.com** *Ozarkbid*

Contact Chase Crawford, Crawford Auction Service for more info @ 417-399-1904

Sam CRAWFORD AUCTION SERVICE LLC

As we are selling both houses, will sell the following located from Pittsburg, Mo. 2 miles West on J Hwy. to J8, then North 1-1/2 miles. Watch for Crawford Auction Service signs.

Wednesday, May 19, 2021 – 10 a.m.

HOUSEHOLD – ANTIQUES – TOOLS – MISC.



Nice clean auction with good antiques and furniture.

See website for more pictures!!

Antiques/Collectibles

Camel back trunk
Library tables
Piano stool, claw feet
Desk; Desk & stool
Tapestry
Striking clock
Walnut end table & coffee table
Vanity lamps
Sq. China cabinet
Dresser w/mirror
Iron kettle; Barrel churn
Violin
Sewing rocker
Singer treadle sewing machine, oak cabinet
4 Poster brass(?) bed, full

Brass Indian statue
Brown mule tobacco cutter
Metal glider; RR lantern
3-4 Kerosene lamps
Flat top trunk
State spoon collection
Duncan Phyfe drop leaf table & 4 chairs
Lg. floor safe, Carl. W. Krambeck
Hand well pump
Dry sink
Cedar chest
5-6 Dolls
Some cut glass
Sev. pieces of Hull pottery
Some Frankhoma, other glassware
Records

Household

4Pc. B/R set, queen
King size bed
5Pc. B/R set, queen
Futon, queen
3-4 Living room chairs
Leather chair & ottoman
Couch; Sectional couch
Recliner & ottoman
Modern dining table & 6 padded chairs
Iron glass top coffee table
2 Bedside tables
Other small tables
Large mirror; Sev lamps
Sev nice framed pictures & paintings

Elec. treadmill, elliptical, other exercise equipment
Some books
Oak file cabinet
Wood TV trays
Wood dining table & 4 chairs
Bedding; Spot cleaner
Christmas decorations
Household misc.
Some small kitchen appliances
2-3 Canners; 2 Roasters
Fruit jars; Coolers
Luggage; F/P set
Stereo & speakers
VCR; Other misc.

Tool/Misc

Stihl pole saw; Stihl 170 chain saw
1500W port. generator
Wheel barrow; Lawn spreader
Garden tools; Long handle tools
Some wrenches
Double wheel grinder on stand
PR car ramps

12-15 Rods & reels; Muskie lures
Other tackle; Marten house
Lg bird bath
Lg lawn statue of "Mary" & other religious statues
Lg. metal storage shelf
Other misc.

Sam CRAWFORD Auction Service LLC

1944 CELEBRATING 77 YEARS 2021
STARTING 77th YEAR OF SALES AND SERVICE

TERMS: Cash or good check. Nothing removed until settled for. Not responsible for accidents. Lunch available. Statements made day of sale take precedence over printed matter. All items sell as is. No warranties given or implied.

417-998-6629
Cross Timbers, Mo.

CrawfordAuctionService.com

Sam
417-328-9137

Chase
417-399-1904

Chance, CAI
417-298-1751

Tom Poynter
Jack Lancaster

Dunavin & Boettger



GUNS, KNIVES, AMMO AND COLLECTIBLES AUCTION



3826 WEST HIGHWAY 18, CLINTON, MO ~ 2 MILES WEST OF THE CLINTON CITY LIMITS

To settle the estate of our father Alex Hodges, we will offer the following described guns, knives, ammo and other collectibles at public auction located: 2 miles west of the Clinton City limits on Highway 18 (on the south side of the road). Watch for the orange auction signs on:

SATURDAY, MAY 22ND 2021 10AM



GUNS - RIFLES - PISTOLS - SAFE - AMMO - RELOADING & CLEANING SUPPLIES

- 1 - Anschutz-Savage 164 Sporter .22 rifle with Leupold scope
- 2 - Browning Belgium A5 Lite 20ga shotgun, VR, imp, round knob, blonde wood
- 3 - Browning Belgium A5 Lite 12ga shotgun, VR, mod, blonde wood
- 4 - Browning Belgium A5 Sweet 16 shotgun, mat, imp, round knob
- 5 - Chiappa 1911 .22 pistol (2 clips & box)
- 6 - CZ-USA Bobwhite 202 B S/S 12ga shotgun with 5 choke tubes (NIB)
- 7 - KelTec P11 9mm pistol in hard case
- 8 - Marlin model 38 pump .22 rifle, hex barrel
- 9 - Marlin model 781 bolt action .22 rifle with Leupold M8 scope
- 10 - Marlin model 883 bolt action .22mag rifle with Simmons K4 scope
- 11 - Marlin model 336 RC lever action 30-30 rifle
- 12 - Marlin model 795 semi auto .22 rifle with Weaver scope & sling
- 13 - Marlin model 917V bolt action 17HMR rifle
- 14 - Marlin model 336 lever action 30-30 rifle with Redfield scope
- 15 - Parker Reproductions DHE 28ga side x side shotgun, Imp/Mod, single selective trigger, NIB with hard case
- 16 - Remington model 700 ADL syn. bolt action .223 rifle, sling & Weaver scope
- 17 - Remington model 514 bolt action .22 rifle
- 18 - Remington model 870 SP5-T 12ga shotgun, 3", Tasco Pro Point scope, 2 barrels (slug barrel & original VR)
- 19 - Remington model 700 ML .50cal muzzle loader rifle with sling
- 20 - Remington/Baikal model SPR 210 side x side .410 shotgun, single trigger
- 21 - Remington SPR 210 side x side .410, single trigger
- 22 - Richland model 808 12ga O/U shotgun
- 23 - Riverside Arms 12ga side x side shotgun
- 24 - Rossi-Interarms model 65 44-40 rifle
- 25 - Ruger Blackhawk 38/.357 revolver (NIB)
- 26 - Ruger No. 1B 30-06 rifle with scope rings
- 27 - Ruger No. 1B 25-06 rifle with Leupold scope
- 28 - Ruger No. 1B 300 Win Mag rifle with Weaver scope

- & sling
- 29 - Ruger No. 1B 7mm Mag rifle
 - 30 - Ruger No. 1 RSI International 7x57 rifle with Leupold scope
 - 31 - Ruger No. 1B 22-250 rifle with Leupold scope
 - 32 - Ruger No. 3 45-70 rifle
 - 33 - Ruger No. 3 .22 Hornet rifle with Leupold M8 scope
 - 34 - Ruger model 77 RS bolt action 30-06 rifle with scope rings (in separate bag)
 - 1 - Browning Pro Steel combination gun safe
- 1,000's of rounds of ammunition including:**
- 17 HMR, 22 LR and short, 22 Mag, 22 hornet, 204, 222, 22-250, 243, 25-06, 250 Savage, 30 Remington, 30-30, 30-06, 308, 300 Win Mag, 32 Win, 32-40, 380 Auto, 38 Spl, 357 Mag, 7mm, 8mm, 40 S&W, 44-40, 44 Mag, 45 Colt, 45-70
 - 500+ boxes shotshells: Including: Steel shot in 10, 12 & 20ga. Lead shot, various loads in 12, 16, 20ga. and .410 bore. Some in vintage boxes. Several boxes Quail Unlimited Celebrity Quail Hunt tube stamped collectible shells.

Collector Ammo: Remington 175th Anniversary tin 22cal, Winchester 1993 Collector tin, Winchester in wooden box 22cal., John Wayne 42-40 & 44-40

KNIVES - COLLECTIBLES - STAMPS - COINS - LIMITED EDITION ARTWORK

- 1 - Large lot of Remington Bullet knives 1989-1997
- 1 - Large lot of Remington Bullet knife posters, matches for most of the bullet knives. 1983, 1990-1996.
- 2 - Remington Stren Anglers knives 2 - Stren Anglers posters
- 8 - Remington Musket Series knives (7 bone, 1 regular)
- 4 - Remington 870 knives 2 - Remington 10th Aniv. Bullet Knives
- 1 - Remington 10th Aniv. Bullet Knife in Collectors tin
- 2 - Lot Remington 10th Aniv. Bullet Knife posters
- 5 - Remington 175th Aniv. Knives with walnut display plaques
- 1 - Schrade Scrimshaw 1991 limited edition series of the Great American Outdoors with display box
- 2 - Ken Richardson handmade antler handle knives
- 10 - 1983 Remington Limited Edition Baby Bullet Knife and Poster Sets

- 1 - Large lot misc. knives including: Camillus, Schrade, Schrade Scrimshaw, Swiss Army, Buck, Case, Winchester and others

Stamps: Plate blocks, collector sets, books, post cards 1980's through 1994

Coins: Proof sets, uncirculated sets, commemorative coins and sets 1961 and newer.

- 1 - Lot Quail Unlimited Stamp Prints 1996, 1997, 1998, 2001, 2004, 2005, 2007 & 2008 (some are framed)
- 1 - David Mass, Winter Shelter-Bobwhite #320/950
- 1 - Linda Pickens, Smokin' Tomoka - English Setter #392/1800

ARCHERY - FISHING - DECOYS

- 1 - Lot fiberglass, aluminum and wood shafts, nocks, fletching, tips, waX
- 1 - Large lot of lures, still in packaging including crank baits, spinner baits, bass and crappie jigs, plastic worms.
- 1 - Lot old wooden lures 1 - Lot vintage fishing reels 1 - Lot new fishing reels
- 1 - Antique glass minnow/crayfish trap 1 - Lot fishing rods with reels

- 13 - Carry Lite Dura-Beak vintage paper mache decoys

TRUCK - TRACTOR - MOWERS

- 1 - L1 - 2007 Ford F-150 XLT crew cab, 5.4 Triton, 2WD, 240k miles, hard tonneau cover, cloth
- 1 - Ford 5600 diesel tractor, loader, bale spike and bucket. Hours unknown

- 1 - John Deere Z445 zero turn 54" deck, 22hp, 740hrs
- 1 - Gravely ZT mini 1540 zero turn, 40" deck, 15hp

JEWELRY - HOUSEHOLD - MISC

- 1 - Lot belt buckles: NRA, Remington, Kershaw, CVA, Sharp Brothers Seed, Red Man, Sierra Bullets, Quail Unlimited
- 1 - Lot costume jewelry: Vantel Pearls cultured pearl rings, necklaces, earrings, bracelets. Grace Adelle broach pins, necklaces, earrings, scarves - all new items.
- 1 - Queen size head and foot board 1 - Chest of drawers 1 - Chest freezer
- 1 - Oak entertainment center 1 - Sennhauser bluetooth headphones
- 1 - Lot miscellaneous household items 1 - Small lot Scentsy warmers
- 1 - Small Lot Limited edition plates

Auctioneer's Note: Alex Hodges was a school teacher, life-long outdoor enthusiast, collector and active in several conservation organizations. This sale includes a lifetime collection of firearms, ammunition, fishing gear, knives, archery and reloading supplies, outdoor collectibles and limited-edition artwork. In addition, he was a coin and stamp collector. Many items are new, old stock in original vintage packaging. Many of the firearms with original boxes. Also being offered for sale are a few items from the estate of Jean Hodges. New items will be added, still being sorted through.

Be sure to visit:

WWW.AUCTIONARROWS.COM

For more pictures!

Owner: The Estate of Alex Hodges

AUCTIONEER: DICK HUTCHISON AUCTION & REAL ESTATE LLC

(573) 378-8822 Cell (660) 347-5656 Office dickhutchisonauction@me.com
Auction Associates: Toby Brown (660) 473-6008 or Sam Trelow (660) 281-7710

As always, No buyer's premium or fees...

What you bid is what you pay!

Not responsible for accidents. Statements made day of sale take precedent over all printed material. The Auctioneer and owner deem all above information to be reliable but make no guarantees either stated or implied.

PUBLIC AUCTION

10:00 A.M. * Saturday, May 15th * 10:00 A.M.

Location: 904 Maxine Ave. Crane Mo. 65633 **Directions:** From Hwy. 413 & Main take Main St. north blocks then right on Mockingbird 5 Blocks to Maxine Ave. *Watch for Signs* Lunch & Restrooms Available



ANTIQUE - COLLECTIBLE

1958 Schlitz Serving Tray;
1950's Budweiser Serving Tray;
Old Hardware Store Rolling Ladder;(2)
10 Drawer Metal Cabinets; Vintage
Deer Hoof Gun Rack w/ Horns; Clear
Refrigerator Dish;
Pink Milkglass Bowl;
Lg. Lot Hen & Rooster Figurines;
Lot Misc. Figurines & Nic-Nacs; Metal
Alladin Thermoses;

APPLIANCES - FURNITURE

Chest Freezer (LIKE NEW);
Whirlpool Washer & Dryer (Nice
Set); Whirlpool Refrigerator (Plain
White & Nice); Kenmore side x side
Refrigerator (Garage); Hoover Wind
Tunnel Vacuum Cleaner;
Oak Dining Table w/ 6 Pattern Back
Chairs; Old Painted Dropleaf Dinette
Table w/ 2 Chairs;
(3) Oak Bow Front Claw Foot Curio
Cabinets;
Micro-suede Sofa & Loveseat;
(2) Nice Loveseats;
Maroon Recliner;
Small Oak Double Glass Door Bookshelf;
Rolltop Desk;
Lane Cedar Chest;
Nice Knotty Pine Cannonball Bedroom
Suite incl. Bed, Dresser, & (2)
Nightstands;
Extra Nice Waterfall Bedroom Set incl.
Bed, Tall Chest, Dresser, & Vanity
Dresser;
Twin & Full Beds w/ Mattresses;
Jewelry Armoire;
(2) Nice Metal Bar Stools;
(3) Chrome Leg Workbench Style Bar
Stools; Ironing Board Chair;
Wood Rocking Chair;
Office Chair;
Misc. Nice Tables, Stands & Shelves;
Wood Toy Box;
Floor & Table Lamps;
Black Metal & Glass Magazine Rack;
Wicker Hampers;
Samsung 48" Flatscreen TV;

Barnwood Bench;
Iron & Wood Lawn Bench;
(3) Quilt Racks;
Misc. Pictures & Wall Deco; More
Furniture not Listed;

GUNS - AMMO

Weatherby Vanguard .243, (Synthetic
Stock); Savage Axis, 6.5 Creedmoor
(Stainless/Synthetic) with Vortex
Scope (Like New);
Savage Axis, 6.5 Creedmoor (Blue/
Synthetic) with Weaver Scope (Like
New);
Savage model 111, 25-06 w/ Nikon
Scope; Stevens model 200 30-06
(Like New);
Browning BPS 20ga. Pump, (Engraved
Receiver, Vent Rib, Invector Plus
Chokes);
Remington 870 Express 12ga
Pump, (Rib&Chokes); Tri-Star Viper
G2 Sporting 12ga. Ported Barrel,
Adjustable Comb, Ext. Chokes (Like
New); Stoeger Condor I 12ga. O/U,
Vent Rib;
Stoeger Condor I .410ga. O/U, Vent
Rib; Hercules 20ga. Model 1929
Single Shot;
Sig Sauer P365 .9mm High Cap. Micro
Compact; S&W M&P Shield EZ .380;
(2) Boxes 7mm Mag.;
(150) Rds. Winchester & Federal .45
Auto;
(300) Rds. 9mm Ammo;
(2) Boxes 325 ct. 22 Ammo.;
8 Gun Gun Cabinet;
Few Rods & Reels;

WOODWORKING & MISC. TOOLS

Campbell Hausfeld 7hp., 60 Gal. Air
Compressor; Ridgid JP06101 6 1/8"
Jointer/Planer(Never Used); Grizzly
G1079 16" Drum Sander;
Grizzly G0512 - 6" x 80" Edge Sander w/
Wrap-Around Table;
Grizzly G0444Z 10" 2hp Table Saw;
Grizzly G0538 Oscillating Spindle
Sander (NEW); Shop Fox Aluma-
Classic Table Saw Fence; Craftsman

12" Bandsaw/Sander;
Craftsman 10" Radial Arm Saw;
Rockwell RK7321 Bladerunner Table
Top Saw; Delta 9" Band Saw (Never
Used);
Delta SS350 16" Variable Speed Scroll
Saw; Rockwell 34-010 Power Miter
Saw;
Router & Table;
Central Machinery mod# 45378 2hp
Dust Collector;
16 speed 3/4hp. Floor Model Drill Press;
Heavy #104 1/2 REED Vise on Stand;
Heavy 5" Buffalo Vise on Stand;
Drill Press Vise on Stand;
(2) Craftsman 5 Drawer Roll Around
Boxes; Craftsman 6 Drawer Roll
Around Box;
Misc. Tool Boxes;
Misc. Hand Tools;
Misc. Drills, Saws, Sanders etc.;
Skil #736 Roto Hammer (Jack Hammer);
Air Tank; Extension Cords;
Lawnmower Hydraulic Floor Jack;
Roll Around Shop Stool;
Nice Step & Extension Ladders;
2 Wheeler;
(4) 20lb. Propane Bottles;
Lots & Lots of Lg Industrial Sandpaper
Drum Rolls; Craftsman Gas Leaf
Blower;
2 Wheel Lawn Seeder/Fertilizer;
Lots & Lots of Misc. Shop Related Items
not Listed;

EXERCISE EQUIPMENT - MISC.

Nordic Track GX 4.7 Recumbent Exercise
Bike, iFit Compatible;
Nordic Track T5 Zi Treadmill;
Sunny Twist Stepper;
Weider Pro Power Stack Weight Gym;
Weight Bench w/ Weights;

MISC.

Lot Pots, Pans, Dishes, Kitchenware &
Utensils; Small Kitchen Appliances;
Kenmore L.P. Grill (Red);
Char-Griller Grill/Smoker;
L.P. Fish Cooker (NEW); Coolers;
Lots & Lots More not Listed;



OWNER: BILL LUDWIG

Auctioneers Note: Everything is Extra Clean & Nice. See our website: fosterauctionservice.com for more info. & pictures.

See our website for pictures and more info!

Auctioneer: Larry Foster Galena, Mo

Phone: (417) 723-8329 Cell: (417) 839-6860

www.fosterauctionservice.com Email: bidnowsold@aol.com



R&R AUCTION SERVICE

ESTATE AUCTION OF PHIL LEGAN

SATURDAY MAY 15TH • 9AM

303 North Hickory in Buffalo, MO

This estate is loaded with vintage, antique, and collectible merchandise.

It's like taking a step backward in time as many items have been here for decades. It is a must attend but some items include...cedar chests, sofa, arm chair, rockers, wooden rocker, fold up rocker, footstool, 1/2 size fiddle, Rock top lamp table, auto harp, wash stand, linens, 3 full size bed sets, chest, dresser with mirror, sewing box, makeup vanity with a stool, chest on wheels, Brother printer, chrome dinette set, green depression, Fire king, USA ring bowl, salt & pepper & sugar set, old ring measuring cup, Sharp microwave, old Mason and Ball jar lids in old boxes, Mr. Coffee, GE Dryer, Estate Washer, two rocker/recliners, LG flat screen, gumball machine, little tables, oil lamp in holder, old chest freezer (non-working), Speed Queen wringer washer, two AC Delco floor jacks, corn sheller, Campbell Hausfeld dual tank compressor, hand tools, metal cabinet, garden hoses, auto buffer, Echo chain saw, wood step ladder, Kelvinator, nut cracker, metal ladder stool, pressure cooker, galvanized bucket, picnic table, BBQ grill, granite pot, 1994 Chrysler New Yorker has title, 1991 Winnebago 36,000 miles, wooden folding chairs, Campbell Hausfeld stand up air compressor, park benches, car horn, mower jack, aluminum ramps, air tools, creeper, drafting table, Mr. Heater, Cub Cadet (needs repair), cordless drill, gas jugs, metal desk, tons of sockets, batteries, shop tool box, Sears Kenmore roll a matic fan, turntable, 78's, RCA home theater system, 2 wheel hand truck, wheel barrow, grater, step ladders, book shelves, file cabinets, 5 disc changer, Sharp Magnavox VHS, Shop Vac, push mower, walk

behind weed eater, Craftsman edger, Old Schwinn bike, Next dual suspension mens 7 speed bike, Western Flyer bike, Huffy 101, stunt bike super shock, Skil chain saw, Stihl weed eater, Stihl pole saw, Echo pole saw, old croquet set, battery chargers, chain, lumber, Texaco barrel, cowbell, hand meat grinder, Old fireplace set, and irons, acetylene tanks, large Prince Albert can, Sir Walter Raleigh can, old gallon bottles, bushel baskets, fence stretcher, come along, scythe, post driver, porch swing, granite cooker, hanging wicker chair, jars, lawn roller, old metal gas can, Lincoln Welder, woven wire, a new set of heads for a 80's 318 motor, sand bag, truck tool box and so much more we can't start to list is all.



View this auction and more at www.rrauctionservice.com

TERMS: Cash, check, or credit card with proper I.D. nothing removed until settled for A 3% fee will be added to credit card purchases. Not responsible for errors in listing. Any announcement made sale day will take precedence over any printed matter. **Note:** Service will take every precaution to prevent accidents, but will not be responsible should any occur.



For more information contact Professional Auctioneer Russ Weeks at 417-576-7357 or check out www.rrauctionservice.com

Serving this area's auction needs since 1997 with honesty and professionalism.

www.rrauctionservice.com

(417) 576-7357 or (417) 345-4140



Annual Equipment, Gun & Vehicle CONSIGNMENT AUCTION 10 a.m. Saturday, May 15

Location: One mile north of Houston on U.S. 63 at the Texas County Fairgrounds.

TRACTORS ★ FARM EQUIPMENT ★ TOOLS

John Deere 4230 tractor • 1100 Massey Ferguson tractor • International 1086 tractor • Ford 1710 diesel tractor • 3 Point five ft. Bushhog • 3 Point six ft. disc • 3 Point six ft. King Cutter tiller • 3 Point six ft. cultivator • 3 Point JD planter w/plates • 30 Gallon sprayer with five ft. boom • Ten ft. Allis Chalmers dump grain wagon • One row Ford Corn Picker • Pop up bale loader • New Holland side delivery rake • 22 KW PTO generator on two-wheel trailer • B & B 300-gallon sprayer on trailer • Billy Goat leaf vac on two-wheel trailer • Four basket hay tedder • 1000-gallon fuel tank • International square baler • New Holland 256 rake • Eight ft. pull type Bushhog • New 3 Point sprayer • New Holland 456 sickle mower • 7 ft. pull type disc • 5 ft. disc plow on wheels • Minneapolis Moline Tractor • Cub Low Boy mower with blade • Six ft. Three Point Bushhog • 730 JD Center Pivot Mower Flail Conditioner • Win Power Pipe thawing machine - portable generator • 8 ft. round water tank • Homemade wood splitter • FS 250 Stihl weedeater • F240 R Stihl weedeater • Woods six ft. Bushhog • Lawn aerator • Parts washer • Engine stand • 150-gallon propane tank • Wood clamps • Craftsman Hollow Chisel Mortiser • Miter saw • Drill press • Craftsman 12-inch wood lathe • Router bits • Dove-tailing machine • Router • Craftsman band saw • Belt sander • Craftsman table saw • Craftsman planer • Craftsman 10" miter saw • Craftsman scroll saw • RotoZip • Fencers • Chainsaws • Office desk and office equipment • 25 plus bikes • Scanners • Irrigation pipe with spray nozzles • 22 ft. portable grain elevator • Hammermill 10 X 24 inch • Husqvarna lawn mower • Troybilt gas leaf blower • Compressor 100 PSI • New radiator for a 1949 Jeep pickup • Large load of tools from the Sliger estate •

★★★ UTV ★ MOTORCYCLES ★★★ CAMPER TRAILER ★ PICKUP CAMPER ★

Kawasaki Mule 4010, with roof and windshield under 50 hours, one owner • 1996 Catalina light camping trailer, sleeps six, has stove, frig., bathroom, has been stored inside • Shadow eight ft. camper with stove & frig, sleeps four, stored inside • 1996 Harley Davidson Road King motorcycle

★★ VEHICLES ★ TRAILERS ★ WOOD FURNACE ★★

1995 Chevy 7500 dump truck, with 28,000 miles • 1997 International DT4900 dump truck • 1996 Jeep Cherokee two door • 1960 Ford F100 pickup • 1978 Monza station wagon 350 V8 • 2011 Crown Victoria, needs work • 2001 Chevy C1500 HD crew cab 4 X 4 • 22 ft. tilt-bed trailer • Homemade pipe trailer • 1993 Rolco flatbed trailer • Flat Head V8 and three-speed transmission • 1996 Toyota Tacoma Super cab 4x4, needs motor • Hardy outside wood furnace •

AMMO ★ GUNS ★ COINS

Ithaca Model 37 20-ga. shot gun • 38 Special S & W 537-2 • CVA 44 Caliber black powder pistol • CVA Derringer kit • 20-ga. and 12-ga. shot gun shells • 22 LR bricks • 357 Mag ammo & 45 Auto ammo • **WATCH AUCTIONZIP....FOR UPDATED LISTINGS ALSO....**
Call us with items to consign - 417-457-6638....watch as items are listed.

Auctioneer's note: Expecting several more consignments. Good quality vehicles and equipment consigned from complete sell outs.

Darren SCHEETS
AUCTIONS
(417) 457-6638 • (417) 926-8575
www.scheetsauctions.com



TERMS OF AUCTION: Cash or check with picture ID. Nothing loaded or removed until paid for. Everything sells as is, where is. Not responsible for accidents, lost or stolen items. Auction day announcements take precedence over all previous advertisements. LUNCH ON GROUNDS.

ESTATE AUCTION

Saturday, May 15th, 2021 ~ 10:00 AM

LOCATION: 730 West Third, Webb City, MO (Watch For Signs)

Auction For John & Cherry Furry



Antique, Modern Furniture & Appliances

1800's Ant Dresser W/Mirror, Ant Hardware Store Style Glass Front Cabinet, Ant Chest Of Drawers, Ant Drop Leaf Table, Several Sm Ant Tables, Ant Magazine Rack, Several Ant Trunks, Prim & Old Chairs Of Various Kinds, Prim Chest Of Drawers, Prim Metal Cabinets, Ant Cast Iron Wood Stove, Oak Round Front Curio Cabinet, Ant Metal Vanity Stool, Drop Leaf Kitchen Table, Old Cedar Chest, Lg Wood Gun Cabinets, Lots Of Other Wood & Metal Prim Furniture, Old Metal Lockers, Old Sm Child's Chair, Old School Desk, Lots Of Old Pictures & Paintings, Old Bird Cage, Leather & Camo Loveseat & Chair, Wicker & Wood Style Love Seat & Chair, Dryer, This Is Only A Partial Listing As Several Items Will Be Added Sale Day

Advertising Pcs, Old Wood Boxes, Old Military Clothing, Old Toys, Old Dolls, Old Linens Inc Very Old Quilts, Old Pottery Pcs, Cookie Jars, Old Catalogs & Other Old Paper Goods, Old Ladies & Men's Hats, Ant Heaters, Spoon Collection, Ant Silverware In Box, Old Kitchen Utensils, Birdhouse Collection, Old Metal Egg Scale, Old Baskets, Old Fishing Poles, Very, Very Old Christmas Décor Pcs, Old Purple Glass, Very Old Glassware Of Different Kinds & Different Patterns, Pyrex Colored Dishes, Old Dishes Inc Blue & White & Poppy Trail, Owl Collection, Old Collector Plates, Lg Lot Of Old Books, Wilton Cake Pans, Hundreds Of Other Items Stored In Boxes & Totes Unable To See That Will Be Added Sale Day.

Antiques, Collectibles & Households

Lg Ant Cast Coffee Grinder, Ant Iron Wheels, Ant Well Pitcher Pump, Old Nail Keg, Old Advertising Yardsticks, Cast Iron Pcs, Galvanized Pcs, Ant Golf Clubs, Ant Bikes & Tricycles, Ant Wagon, Graniteware Pcs, Copper Kettle, Old Tins, Old Oil Lamps, Old Jars & Bottles, Lg Lot Of

Air Compressor, Chainsaw, Tools & Outdoor Items

Air Compressor, Scroll Saw, Chainsaw, Sm Electrical Tools, Sm Woodworking Tools, Sm Hand Tools, Long Handle Tools, Nuts, Bolts, & Screws, Lots Of Other Shop Items Not Listed



Auctioneers Note: It Is An Honor To be Conducting This Auction For The Furry Family. This Is A Collection Of Items For Over 70 Years. There Are Some Neat Antique & Primitive Items That Will Be In This Auction. If You Are A Collector Or A Dealer You Do Not Want To Miss This Auction. There Will Be Hundreds Of Items Added Sale Day As They Are Stored In Boxes & Totes Unable To See. Sure To Be Several Neat Surprises Sale Day. Will Be A Very Large Auction. Please Plan Now To Attend. **Sale Order: Antique, Modern Furniture & Appliances Will Sell First Then Move Into Antiques, Collectibles & Households. Tools & Outdoor Will Finish Auction. See Ya There!!!**

Terms: Cash or check with proper ID. Now accepting most major credit cards. Nothing removed until settled for. Statements made the day of sale takes precedence over printed material. Everything sold as is where is. Not responsible for accidents. Restroom available. Concessions Provided. Check our website for upcoming auctions and for additional pictures!!



NANCE AUCTION SERVICE

No Matter How BIG or small, We Do Them All!

www.nanceauctionservice.com

Col. Bill Nance 417-214-0093

In God We Trust

Philippians 4:13



HUGE RESTAURANT & LOUNGE AUCTION

Lots of bakery items & new smallwares too!

MONDAY, MAY 17 - 9:00 AM

CONTENTS FORMERLY OF CIAO ITALIAN RESTAURANT
& HIGHWAY 160 ROADHOUSE

104 W THIRD ST • FAIR PLAY, MO 65649

SELLING ➡

NORLAKE 6'X6' SELF CONT, SGL PH WALKIN COOLER-2 ICE MACHINES-4 REFRIG SANDWICH PREP TABLES-WORKTOP COOLER-REACHIN COOLERS & FREEZERS, GLASS & SOLID DOOR-KEGERATOR-2 REFRIG BACK BARS-BAR SINK, ICE BINS & OTHER BAR ITEMS-BUNN ULTRA 2 FROZEN DRINK MACHINE-SUPER NICE COMMERCIAL KARAOKE SYSTEM, HOOKED UP & WORKING! PIZZA PRESS-DBL SET LINCOLN IMPINGER CONVEYOR PIZZA OVENS-MEAT SLICER-ROBOT COUPE & UNIVEX CHOPPER SHREDDAR-CURVED GLASS PASTRY CASE-CONVECTION OVENS-ROLLIN COMMERCIAL BAKING PROOFER-PORT PROOFER-HEATED HOLDING CAB-RANGE-GRILLS-CHARBROILER-BROASTER ELEC PRESSURE FRYER, 1 PH! DEEP FRYERS INCL LG CAPACITY-BLODGETT 12 GAL ELEC TILT KETTLE-REFRIG SALAD BAR-STEAMTABLE-LARKIN 12' EXHAUST HOOD WITH EXHAUST FAN, MAKEUP AIR & FIRE SYSTEM-SS SINKS-GREASE TRAP-WORKTABLES, CAN RACKS, PASTRY RACKS-APPROX 20 BRAND NEW, IN BOX METRO COATED & CHROME WIRE SHELVEING UNITS INCL WALL SHELVES-SOME BARSTOOLS-WASHING MACHINE-OTHER RESTAURANT EQPT & HUGE AMOUNT OF SMALLWARES, MOST NEW!

NOTE: This is only a small, partial listing of the huge amount of nice restaurant and bar equipment we have in this auction! Nice walkin cooler, reachin refrigeration, keg tapper, back bars, drink machine and other bar equipment; several pizza & bakery items, general restaurant cookwares, Larkin exhaust hood & so much more! Our building is packed wall-to-wall! Visit our website often and click on the "Auctions" tab for complete listing as well as photo updates frequently. Two auction rings part of the day so bring a friend and spend the day with us. Mark your calendar and make plans to attend this excellent auction!

MARON RESTAURANT EQUIPMENT, LLC & AUCTIONS CO.
417-327-5619 • WWW.MARONRESTAURANTEQPT.COM

PERSONAL PROPERTY AUCTION

SATURDAY, MAY 22, 2021 @ 10:00 AM

5564 N FARM ROAD 105 • WILLARD, MO 65781

INVENTORY LIST

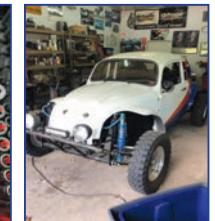
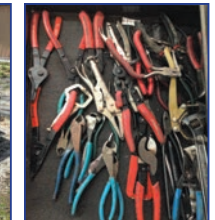
1972 Class 5 Volkswagen- Full coil suspension, 6in extended front end, 2076cc Motor, Bus Transmission, 930 cv joints & axles, Power steering, full caged car, 3X3 trailing arms, wide front end, single 2 barrel carburetor will have a starting bid of \$20000.

Chevrolet 350 crate engine
Break in engine stand with starter set up for
Grizzly press
Engine cherry picker
Homer 16 speed drill press
Large band saw
Craftsman table saw
Torch set
Craftsman toolbox lots of handtools
Grizzly belt sander
Lots of hand tools
Sun 740 electronica and tester
Parts washer hand sand blaster
Boring bar 4 V wagon
Floor grinder
Craftsman 5 1/2 inch floor vice
Plasma cutter
Meg Welder Miller
Milwaukee chopsaw
Three in one shear brake and roll
Engine analyzer

router table
buffer
Train track
Valve grinding machine
HO train cars
Boxes of train cars and accessories
Remote control helicopters
Vintage gumball machines
Business coupe 47 Chevy roller
For Jack
Portable paint booth
Antique press
Greenlee job box
Wheels and tires
Several boxes of HO train accessories
Several boxes of model cars
Milwaukee saw
VW Dual relief case rebuilt Engine with
Volkswagen doghouse style engine rebuilt
Volkswagen doghouse style engine flow filter
Volts wagon doghouse style engine with full flow
Lots of wall hanging advertising snap on clocks
Paint shaker Bolt been toolboxes
A lot of Volkswagen parts starters electronica
Saga air mask

Dial height gauge
Five boxes of board pistons and rings sets of
Volkswagen brake parts
69 or later volts wagon body and stand with title
Shelving in miscellaneous
Volkswagen bumpers hood doors tires engine cages
69 or later volts wagon with pop out windows
Yard cart
Car hauler with electric winch
1972 Volkswagen convertible roller all metal
Old gumball machines and other
Chewing gum machine one cent
Old condom machine \$.25 with product
Prestone antifreeze large thermometer
St. Louis Globe Democrat news paper stand
Snap on prybar's
Mac half-inch drive impact sockets
Snap on 3/8 drive metric impact sockets
Snap on half-inch drive metric and standard
Craftsman multimeter
Snap on a craftsman sockets

Snap on 3/8 drive impact
Bluepoint half inch drive
Snap on 3/8 drive Air impact
Blue point quarter inch Air ratchet
Bluepoint metric ratchet wrenches
Snap on stabbing metric wrenches
Mac standard wrenches
Snap on standard stubby wrenches
Mac, snap on, channellock, Matco pliers
Snap on hammers and chisels
Grizzly electric metal tin snips
Matco drill bits
Vintage snap on key holder
Mac re-threader kit
Porta power
Vice grips clamps
NAPA thermometer
Snap on thermometer
Machinist tools
2165CC motor- Bore 94mm, stroke 78mm, deck height .060, combustion chamber 59cc, compression 8.8, cb 044 heads, 1.4 ratio rockers, engle 110 cam, empi weber 044 carb, tri-mill exhaust, full flow oil system, stock weight flywheel, chromoly push rods.



FOR MORE INFORMATION GO TO WWW.EASTERLYAUCTIONCO.COM OR CALL EASTERLY'S AT 417-833-9494

EASTERLY

AUCTION CO.

Mike Easterly Auctioneer • 417-833-9494

Not Responsible for accidents or theft. For more information call: Easterly Auction Company, Springfield, MO. Auction Terms: Bank Letter Of Credit Required. Visa, Mastercard, Cash, Cashier's check or checks with proper I.D. Announcements day of sale take precedence over printed material. Auction Notes: Although information is obtained from sources deemed reliable, auctioneer makes no warranty or guarantee expressed or implied. Buyers should themselves take the opportunity to make their own inspection prior to sale.

www.EasterlyAuction.com • auctionzip.com ID#14770



DESIGNER LANDSCAPE MOVING AUCTION

Trucks & Trailers • Skid Steers
• Landscaping Equipment
& Materials • Decorative



Landscaping
Block & Rock
• Office Items
& More on
our website!



7755 South High Point Lane
Columbia, MO

Bidding Ends: Wednesday, May 19th
starting at 12:30 PM

Preview: Tuesday, May 18th
3:30 PM to 5:30 PM

Payment & Pick-Up By Appointment:
Thursday, May 20th by appointment only.

Designer Landscape is moving!
Lots of great items for your home
projects or business.

BID ONLINE AT
Atterberrysells.com

Atterberry Auction & Realty Company
Your Real Estate At Auction Specialists
Email: contactus@atterberryauction.com



TRUNK CHEST: From WWII, Drawer
inside, excellent shape, from single corps.
\$400 obo. 636-234-1888. Gerald.

FORD 8N TRACTOR: Good condition,
Sherman transmission with 6 ft. 3-point finish
mower. \$2,200. 417-766-1991. Rogersville.

BELLY MOWER: 5ft. off C or B Allis
Chalmers, complete, good condition. \$200.
417-766-1991. Rogersville.

**FEMALE ENGLISH CREAM GOLDEN
RETRIVER:** 2 years old, spayed, AKC,
very friendly, calm. \$700 adoption fee. 630-
687-0705. Falcon.

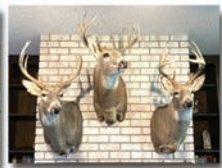
OWENSVILLE-GASCONADE COUNTY KOSSMEYER ESTATE AUCTION

2145 SIMPSON RD - OWENSVILLE, MO

TUESDAY, MAY 18, 2021 @ 5 PM

Farm is located just off Hwy 19 directly between Cuba and Owensville, take CR 541 Simpson Rd 1
mile east to auction location. (On the Gasconade/Crawford County Line) Watch for Signs!

This Is A Partial Listing – See Full Listing and Photos @ ImanAuction.com



CAR – GOLF CART – MOWER: 2004 Lincoln Towncar Signature edition, 149,xxx miles –
E-Z-Go RXV gas golf cart w/ bed – John Deere 125 riding mower, hydrostat, 42"

**OLD & UNUSUAL * ANTIQUES * LAMPS * FURNITURE * HOUSEWARES * GUNS &
AMMO * TAXIDERMY * TOOLS * GATES * FARM/OUTDOOR**

Heirs of Robert & Mary Ann Kossmeyer, Sellers

Terms: Cash, Credit Card (3% charge), or Good Check; Not Responsible For Accidents;
Statements Auction Day Take Precedence Over Ads



IMAN AUCTION COMPANY
660-788-4298 | 660-414-7830 | 660-388-6235

WASHBURN ELECTRIC GUITAR: With
case and Crate amp. \$200 obo. 417-532-
6561. Phillipsburg.

SEEKING PLUMBER: with experience
in New Construction & Residential service
plumbing. Must have experience with all
types of plumbing repairs and the ability
to trouble-shoot and repair many different
plumbing problems. We are looking for
someone that is outgoing, self-motivated,
reliable and has quality ethics. Valid driver
license with good driving record required.
We offer excellent pay and long-term
employment to the right candidate. Paid
vacation, paid holidays and health insurance.
Immediate employment available. Salary is
based on experience. Please call. 573-348-
2093.

SMALL SQUARE BALES OF STRAW:
417-932-4026. Summersville.

ROUND BALES HAY: Net wrapped.
\$29.50. George's Tack, Saddle & Feed.
573-346-7866. Camdenton.

THOMAS KINCAID BOOKS: \$2 each.
417-532-6561. Phillipsburg.

2005 HONDA FOREMAN 4-WHEELER:
2wd, in very good shape, runs good, asking
\$2,800. 573-237-2690. New Haven.

**BETTY CROCKER BAKING FOR TO-
DAY COOKBOOK:** Hardback. \$6.50. 417-
532-2045. Leave message. Lebanon.

WANTED CRAFTSMAN TABLE SAW:
direct drive, #11329970. 417-260-1904.
Bucyrus.

PEDDLE TRACTORS FOR SALE: All
brands. 573-859-6574 or 573-205-3328.
Belle.

69 DART RACE CAR: Less engine, full
tube chassis, all fiberglass except body, for
sale or trade. 573-536-8913. Jefferson City.

**BLACK 2007 SILVERADO EXTENDED
CAB:** 4x4, 1500, 163,000 miles. \$11,000.
417-531-3376. Grovespring.

CAR DOLLY: Heavy duty, adjustable width
ramps, good condition. \$900. 417-753-2747.
Rogersville.

WANTED: 10 cords of wood. 314-497-
1898. Leasburg.

WANTED: 1000 gallon propane tank. 573-
378-6337. Versailles.

**VINTAGE POCKET KNIFE
COLLECTION:** 1950's + 60's, 26 models.
\$150. 573-764-3517. Call in pm. Gerald.

BUFFALO LIVESTOCK MARKET LLC



276 Hwy 32 West
Buffalo, Missouri
May 8th, 2021
Receipts: 1282 Head
Feeders \$5 - \$8 Lower. Cows & Bulls Steady.

REPRESENTATIVE STEERS

300-400 @ 150.00 to 181.00
400-500 @ 140.00 to 163.00
500-600 @ 130.00 to 157.00
600-700 @ 125.00 to 140.00
700-800 @ 126.00 to 130.00
800-900 @ 121.00 to 123.00

REPRESENTATIVE HEIFERS

300-400 @ 130.00 to 159.00
400-500 @ 130.00 to 148.00
500-600 @ 130.00 to 147.00
600-700 @ 117.00 to 126.00
700-800 @ 109.00 to 120.00

FEEDER BULLS

400-500 @ 130.00 to 150.00
500-600 @ 120.00 to 130.00
600-700 @ 118.00 to 126.00
700-800 @ 109.00 to 120.00
800-900 @ 105.00 to 110.00

BRED COWS

900.00 to 1125.00 young cows

COWS CALF PAIRS

800.00 to 1150.00

SLAUGHTER COWS

Big Fleishy 1500# & up
64.00 to 68.50

Med Fleish Cows 55.00 to 62.00

Thin Fleish 50.00 to 54.00

X Thin Fleish 50.00 Down

Light Carcass 28.00 to 40.00

SLAUGHTER BULLS

High Dressing 103.00 to 111.50

Med Dressing 80.00 to 100.00

Low Dressing 70.00 to 80.00

MON-WED MARKET REPORT

Listen to KJEL 103.7FM • Lebanon or KYOO 99FM • Bolivar

VIEW OUR SALES AT CATTLEUSA.COM

CALL FOR TRUCKING OR ON-FARM VISIT

Lyle Caselman • Owner-Manager
417-345-7876 • mobile 417-533-2944

Leon Caselman • Owner
417-345-4514 • mobile • 417-588-6185

BUFFALO LIVESTOCK MARKET LLC

276 Hwy 32 West Buffalo, Missouri
417-345-8122



SPECIAL STOCK COW & BULL SALE

Tuesday, May 18th @ 6:30pm
Expecting 400 to 500 Cows & Bulls

D & R Farms

15 - Reg. Angus Cows, Fall Calvers, Bred Syden Stricken Bulls
10 - Reg. Angus Cows w/ Calves by side

M & C Farms

7 - Fancy Bwf Heifers, Open weighing 750-800#
4 - Fancy Angus Heifers, Open weighing 750-800# ready to breed, will be pelvic ck.
8 - Blk Heifers 950#, Bred to Low B.W. Angus Bulls

Owen Ranch

28 - Bwf Red Angus, Blk Angus Cows, 3-7yr. olds, approx. 10 pairs, Balance Heavy Springers

R. Miller Dispersal

95 - Cows mix color, running ages, some w/ calves, Balance Fall Calvers, Bred Charolais Bulls

Nicholas Farm

30 - Angus & Bwf Cows, 3-5yrs., 3rd Stage

Bradley

1 - Reg. Horn Hereford 2yrs. old Bull
1 - Reg. Blk 2yrs. old Bull, Sim Angus

Rackely

1 - Reg. Angus Bull

Weeks

1 - Bwf Bull, 3yrs. 1/2 Hereford 1/2 Angus

MON-WED MARKET REPORT

Listen to KJEL 103.7FM • Lebanon or KYOO 99FM • Bolivar

VIEW OUR SALES AT CATTLEUSA.COM

CALL FOR TRUCKING OR ON-FARM VISIT

533-2944

Lyle Caselman

588-6185

Leon Caselman

5.3 ACRES: South of Newburg, house, sheds, borders forestry, great hunting, more information call to make appointment to see. \$40,000. 573-368-1625. Owensville.

OZARK EMPIRE FAIR-SPRINGFIELD 60TH ANNIVERSARY COOK BOOK: 1937-1996, 144 pages. Prize winning recipes from the fair. \$9.50. 417-532-2045, (leave message) Lebanon.

TWO FORD REARENDS: Good shape, 4 10 ratio. 573-760-6280. \$100. Desloge.

BIRD CAGE: on stand with tray and toys. \$65. 636-239-4124. Washington.

MID MISSOURI STOCKYARDS

REGULAR SALE EVERY THURSDAY 11AM

WATCH OUR WEEKLY SALE IN REAL TIME ON DVAUCTION.COM

For Farm Visits, Market Updates, or Trucking

Call **Zach Cox 417-777-1320**

Dan Romine 573-578-4939

**Competitive Buyers!
Competitive Commission!
Competitive Market!**

Barn: 417-532-9292

I-44 • Exit 123 "just outside of Lebanon"
17505 Route 66, Phillipsburg, MO 65722

For weekly market updates, visit us at
www.midmoststockyards.com

**JOHN DEERE 310C DIESEL BACKHOE
LOADER:** Cab, 4x4 extend-a-hoe, with extra hoe buckets. \$12,500. 573-765-4406. Richland.

NEW HOLLAND 855 ROUND BALER: New air bag, very good condition, has all the teeth, field ready. \$3,875. 314-724-7154. Leslie.

Salem Livestock Auction

Hwy. 32 Salem, MO • 573-729-8880
Over 40 Years in the Livestock Business

Stock Sale

Saturday May 15th • 1pm

Pre VAC Sale

Friday June 4th • 12 pm

- 5 1st Calf Black Angus Heifers Bred to Black Angus Bull - fancy
- 22 Black & Red Cows running ages 2nd & 3rd stage bred to Black Bulls
- 3 Black Angus Bulls 24 months will be tested
- 33 Black Cows 4-5yrs, 2nd stage bred to Sim Angus Bull
- 1 Horned Hereford Bull 2 plus will be tested
- 27 Black & Bwf Cows 3-5yrs, 2nd & 3rd stage bred to Black Bull
- 1 Black Angus Bull 2yrs will be tested
- 62 Mix Cows running ages, 20 with calves, bred to Angus Bull "Sell Out"
- 41 Mix Cows running ages, 10 with calves, bal 2nd & 3rd stage bred to Angus Bull
- 2 Red Angus Bulls 24 months
- 2 Sydenstricker Black Bulls, 28 months, will be tested Pre Vac Sale Friday June 4th @ 12
- 15 Black Cows 3-5yrs, 2nd & 3rd stage, bred to Black Bull
- 25 Black Cows 4-6yrs, 8 with calves, bal 3rd stage -Fancy- "Sell Out"
- 30 Black Cows (25) 4-6yrs (5) 7yrs - SS all with calves Calves will average 400lbs and have been worked. Cows have been on a complete Health Program "Sell Out"
- 55 Black Cows (35) Cows 4-7yrs, all with big calves by side, bred back to Horned Hereford or Char Bull (20) Black Cows 3-6 yrs, all with 200lb calves by side, "Sell Out"
- 80 Cows - Sell Out, 40 Red Angus, 20 Black cows and 20 Mix Cows, 5-7yrs, 1st & 2nd stage bred to BeefMaster Bull

Cattle Sale Every Monday at 12 Feeder calves to sell at 12, butcher cows & stock cows following

All Consignments Welcome Up Until Sale

Allen Thompson Renee Lauderdale

417-932-4097 417-926-2682

Chuck Thompson Brandon Barton

417-257-5610 417-259-1597

Terms of Sale: Cash or Approved Check!





Catch

Every issue of Trout Talk
in your mailbox
for only **\$21**

Published monthly April-November

Name: _____

Address: _____

Phone: _____

Email: _____

Mail a \$21⁰⁰ check to: Trout Talk c/o
Lebanon Publishing Company
P.O. Box 192 • Lebanon, MO 65536 or
Call 417-532-9131



Trout
Talk

A special publication of
LC RECORD

417-532-9131 • Lebanon, MO
www.laclederecord.com
www.bennett-spring.com

GARAGE DOOR: 7 ft high, 19 ft. wide, white insulated and hardware. \$175. 636-239-4124. Washington.

METAL CAGE: with tray, 54" long, 3 feet wide, 45" high. \$80. 636-239-4124. Washington.

6 FOOT PULL TYPE BRUSH HOG: \$650. Wood finish mower, 6ft, 3 points. \$550. 636-239-4124. Washington.

WANTED: Hay to cut, within 50 miles of Salem. Buy standing in field or cut in shares. Green Meadow Farm. 573-247-8055. Salem.

Buildings • Hunter's Cabins • Lawn Furniture



JAMCO Portable Buildings

800-688-2064 • 307 Enterprise Dr. • Seymour, MO • www.jamcobuilders.com

Rent To Own Plan

COOKBOOK COLLECTION: 26 cookbooks, hardback and softback. All good shape. \$1.00 each or all \$20. 417-532-2045, leave message. Lebanon.

FOR SALE: Bluetick Beagle puppies. 573-315-7574. Ironton.

1995 CHEVY 2-TON TRUCK: with 24 ft reefer box, 13 16 Cat with 6-speed transmission. \$8,850. 573-774-1123. Dixon.

2008 CHEVY UPLANDER VAN: 157,000 miles, only 59,000 on GM installed motor. Call for pics. \$3,750. 573-774-1123. Dixon.

DOGS & DUCKS & HAT-RACK BUCKS BOOK: by Larry Dablemont. Short terms for the outdoorsman, \$6.50. 417-532-2045. Please leave message. Lebanon.

LOOKING TO BUY: Diesel 450C John Deere HiLift. 636-232-7480. Desoto.

WHEEL HORSE RIDING MOWER: Model 520, hydraulic, 20 hp belly mower and front blade. \$650. 636-239-4124. Washington.

NOW TAKING ORDERS: for strawberries. Rissler. 573-392-1857. Barnett.

CUSTOM HARVESTING OF YOUR HAY: 4X5 round or small square bales. Green Meadow Farm. 573-247-8055. Salem.

MISSOURI HISTORICAL BOOK: published by State Historical Society of Missouri. \$6.50. 417-532-2045 leave message. Lebanon.

1998 PROWLER CAMPER: Good condition, bunkbeds, 24 ft. 573-859-6789. Belle.

NEW IDEA: 5410 Disk mower, 10ft. \$4,450. 573-765-4406. Richland.

NEW HOLLAND 7230 DISKBINE: With rollers. \$10,000. 573-765-4406. Richland.

SITREX 12 WHEEL: Bi-Fold Rake. \$5,250. 573-765-4406. Richland.

RADIATOR/FAN SCHROUD: Fits international model tractors models 200, 230, 240. \$125. 636-239-2695. Washington.

Larry Heisel Rentals



HEISEL 573-779-1500

We Deliver!

**Crawler Loaders
Excavators, Backhoes**

Call Larry!

Rental Available in 636 or 573 Area Codes
573-779-1500

**QUALITY PRODUCTS
EVERY DAY PRICES**



KENT

365 MINERAL

Kropf Feeds

Located in the Heart of the
Amish Mennonite Community!
417-345-8600
19 Prairie Lane, Buffalo

KITCHEN FAUCET MOEN: Single lever, sprayer, new cartridge. \$45 obo. 636-239-2695. Washington.

BOOTS: Hip waders, rubber and leather boots. Men's 11, Women's 7, some insulated, \$15-\$45 obo. 636-239-2695. Washington.

TAYLOR TRUCKS & EQUIPMENT

**417-924-2026 • 2676 Hwy. 5
Mansfield, MO**

DANUSER DEALER

Intimidator Tree Puller

**T3 Post Driver & Other Attachments
New Mowers! Bush-Whacker, Big Bee
Storage Containers & Dry Vans - 20' - 53'**

Farm Tires, New Semi Tires, PTO's & Parts for Rotary Mowers, Farm Tractor Implements, Plows, Used 15" Bush-Whacker Now In Stock, Discs, and More Skidsteer Attachments: Pallet Forks, Buckets, Grapples, Hay Spears, RR Ties

**Bush-Whacker
Heavy Duty Rotary Cutter**



**TRAILER PARTS
& REPAIR**

**BUSH-WHACKER HD,
SKIDSTEER BRUSH CUTTER**

**We Invite you To Come By & Look Us Over!
Located 2.5 Miles North Of
Mansfield, MO On Hwy 5**

VEHICLE FOUR WHEEL DOLLY: 1000 lbs max weight. \$75 firm. 417-457-1023. Raymondville.

QUALITY USED SADDLES WANTED: Will pay cash! George's Tack, Saddle & Feed. 573-346-7866. Camdenton.

FORD 7ft. SICKLE MOWER: \$550. John Deere 38 hyd 7ft - 9ft bar needs parts \$150. Bucket spike, \$375. Bucket forks \$100. Johnny Call Back box \$350. 3 sun block shades 7ftx8ft, \$50 each. 55 gallon barrel with hand pump. \$75. 12 ft. box trailer, 4 ft wide 6 ft tall, \$550. No checks. 573-201-9556. Newburg.

3 BUILDING LOTS: Near Terre DeLac, Bonne Terre, MO. Water, Sewer, Elec, all are 1 acre plus, beautiful wooded. \$11,000 each. Call 314-570-2257.

JOHN DEERE 566 ROUND BALER: Monitor, kicker. \$5,200. 573-765-4406. Richland.

JOHN DEERE 2955 DIESEL TRACTOR: Cab & cold air. 85hp, 1,700 hrs, with new loader. \$29,000. 573-765-4406. Richland.

**CASE 580C DIESEL BACKHOE
LOADER:** \$9,200. 573-765-4406. Richland.

LS TRACTOR



**50hp, w/ Loader, Bucket &
5ft. Brush Cutter, 150 hrs.,
New Oil & Tune-up.
Paid \$25K, will sell for \$23K OBO**

CALL 314-570-2257

**VERMEER 4 BASKET HYD FOLD
TEDDER:** \$4,700. 573-765-4406. Richland.

WANTED: Buying old chicken barns. 417-741-0516. Hartville.

**JOHN DEERE SMALL GROUND
DRIVEN MANURE SPREADER:** \$1,500. 573-765-4406. Richland.

JOHN DEERE 2755 DIESEL TRACTOR: Cab & cold air, 75hp with John Deere 620 loader. \$19,950. 573-765-4406. Richland.

JOHN DEERE 467 ROUND BALER: Monitor, kicker, net wrap. \$10,850. 573-765-4406. Richland

FORD 6600 DIESEL TRACTOR: Cab, low hours. \$9,250. 573-765-4406. Richland.

**IHC HOUGH 65 DIESEL
ARTICULATING LOADER:** \$9,750. 573-765-4406. Richland.

2002 S10 PICKUP: Maroon, good tires, good shape, runs good! \$3,500. 417-533-9484. Grovespring.

JOHN DEERE 4030 DIESEL TRACTOR: Cab & cold air, with JD loader. \$19,750. 573-765-4406. Richland.

CRAFTSMAN MOWER: 26 hp, 54" cut, Kohler engine, 6 speed, \$600. 573-729-6211, 573-453-0656. Salem.

IHC 766 DIESEL TRACTOR: 80 hp with Koyker KS loader & bale spike. \$7,750. 573-765-4406. Richland.

TRUSTED & THOROUGH SERVICE

**Repairs • Rebuilds
Cast Iron & Steel Welding
Engines • Transmissions
Electrical • Hydraulics
PTO & Drivelines**

VERNON 808 8MM MOVIE EDITOR:

With box and 8mm splicer. Like new, original owner. \$65. 417-844-4319. Springfield.

NEW HOLLAND 1411 DISKBINE: with roller. \$8,950. 573-765-4406. Richland.

MISSOURI OZARKS BOOKS: Scenic Driving the Ozarks, 317 pages, \$7.50. Missouri Wild Mushrooms, 186 pages, \$5.00. Missouri Orchids, \$3.75. Weird Missouri Book, a travel guide to Missouri's Local Legends and best kept secrets, 253 pages, HB, \$12.50. Life Along An Ozark River (Current River), 252 pages, HB, \$6.50. 417-532-2045. (leave message) Lebanon.

MINI FAINTING GOATS: become addicted like me, 100% purebred, perfect for breeders or pets, a great variety of bloodlines, colors and patterns, check website www.greenacresvillage.com or call/text 573-216-7796. Lake of the Ozarks.

POOL TABLES: Installations, moves, recovers, repairs, accessories, etc. 573-646-1700.

**WEATHERED BARN WOOD
SIDING:** 10" wide. 573-729-7226. www.pineridgerustic.com

FERTRELL ORGANIC FERTILIZER: Free Catalog. 315-796-4370.

BUYING STANDING CEDAR: Minimum 6-in diameter. 417-531-0403.

LOG SIDING: 2X8 Pine/Western Cedar www.pineridgerustic.com 573-729-7226.

USED MOBILE HOMES: Call David at VILLA HOMES IN ROLLA 573-578-8072. Rolla.

PUBLIC AUCTION

SATURDAY, MAY 22, 10:00 AM

Directions: From Doniphan take 160 E approx. 2 miles turn left on 21 N, travel 4.5 miles turn right on K Hwy., 1.3 miles to right on county road, second driveway on right, watch for Billy Sexton Auction signs.



TRACTORS

2016 John Deere 6105E 4x4 w/H310 loader, canopy, 1600 hours, like new rubber. John Deere 3040 4x4 w/koyker 400 loader, cab, new seat, 4100 hours. John Deere 4630 2x4, hour meter not working, cab, new seat, front Weights, duals sold with tractor (not currently on). John Deere 4640 2x4 restored, new paint, new interior, dual wheel, cab. John Deere 2550 w/JD 146 loader, 2x4, canopy, good rubber, 5900 hours. Ford TW-20, w/New Holland 52LA loader, cab, 2x4, newer remain motor. Case 1030 Comfort King 2x4 diesel powered.



HAY EQUIPMENT

1200 4X5 net wrapped sorghum Sudan silage round bales (2500 lbs bales). 2020 Vermeer RR140 rotary rake hydraulic lift, like new. 2017 Vermeer R2300 hydraulic twin V rake. John Deere 457 4x5 round baler mega-wide pickup, net wrap, only 2095 bales. New Holland 617 disc mower 9'. New Holland 565 small square baler. 2 New Holland 256 side delivery rakes. New Holland 1002 stackliner small square bale accumulator. H&S 1200M hay wrapper. Durabuilt 10-wheel V rake.



TRUCKS - VEHICLES

2011 Ford F-550 XLT, 6.7L diesel, 2x4 w/HB3550 engine driven Hydrabed hay bed, 89,000 actual miles, red. 2004 Dodge 3500, 5.9L Cummins, white, dually, 4x4, 160,000 miles, 6 speed manual, clean truck. 1999 Ford F350, 7.3L powerstroke diesel, dually, 4x4, 240,000 miles. 2002 Chevrolet C8500 10-speed, twin screw, w/20' flatbed, diesel, built in side toolboxes. 1997 GMC 1500, ext cab, auto, gas, 4x4, cloth, high mileage, white. 1987 Dodge half ton, 2x4, auto, (farm truck). 1977 Ford F-600 w/dump bed, (not running). AG Kart 4x4 mini truck, 4 speed manual, camo.



TRAILERS

2013 PJ 32' Dual tandem gooseneck flatbed w/ ramps (new springs and bushings). 1999 Performance dual tandem, 24' flatbed w/5' Dove gooseneck trailer fold up ramps. Trail-Eze 24' pintle hitch, dual tandem, w/dovetail, heavy built trailer. 2001 20'x7' Featherlite aluminum stock trailer, escape door, single/slide rear gate, 10' chute gate. 2004 CM Odyssey bumper hitch, aluminum, 2 horse straight load trailer. 32' gooseneck dual axle hay trailer (8 bale). 5'x10' utility trailer (needs floor). Hay wagon frame. 20' slide in stock rack. 20' bumper hitch car hauler.



SKIDSTEERS - ATVS - GOLF CARTS

2016 New Holland C238, 90HP, cab, AC/Heat, 719 hours, high flow, tracks, nice machine. Bobcat S-250, 721-IP, cab, AC/Heat, high flow,



wheel machine. Honda Foreman 4x4, 2059 miles, green. Honda Rancher 4x4, ES, aftermarket ITP wheels and tires, brown. 2008 Arctic Cat 750 4x4, w/ winch, camo. Club Car XRT850E electric golf cart. Club Car gas powered w/ fold up back seat golf cart.

FARM IMPLEMENTS - ATTACHMENTS

John Deere HX15 heavy duty 15' batwing bushhog. Bush Hog brand 2620 Batwing 20' bushhog w/new blades. John Deere MX7 3 point 7' bushhog, Woods 315 batwing 15' bushhog, 3pt 6' bushhog, Allis Chalmers 10' cultivator, 2016 Frontier DH-1610, 10' finish disc (like new). TMR tub mixer grinder w/scales. John Deere grain cart. 16' Miller field disc. White 508 5 shank turning plow. 12' Landscaper hydraulic box blade w/wheels. 3pt post hole auger. Knoedler PTO driven grain cart with hydraulic swing auger. White 10' chisel plow. 3pt pond scoop. 3pt bale spike. Shaver hydraulic post driver. Agro-Chem 150 gallon sprayer w/Honda motor. 3pt Calwell 8' hydraulic angle blade. 30' Gilmore PTO driven auger. Skidsteer hydraulic grapple bucket.

WELDER - HEAVY EQUIPMENT - FARM SUPPLIES

Miller Bobcat welder. Caterpillar 955L Track Loader w/new batteries runs good. Titan 6500 watt diesel powered generator. Several 10' concrete road dividers (Jersey barriers). 100 gallon Tuthill pickup bed fuel tank. 3 poly feeders, several t-posts, wire panels, gates, panels, Priefert Squeeze chute, Priefert head gate, woven wire, smooth wire, pallet of Gaucho barbed wire (30 rolls), creep feeders, 250 gallon fuel tank w/stand. Grain bin, stack of 2" pipe, wood corner posts, 10 LYCO double door large calf hutches, galvanized hog feeders, two sets of dual tractor wheels, Fairbanks Morse cattle weighing scale system, John Deere AC2-SGH gas powered air compressor Honda motor (like new), 100 gallon flatbed fuel tank w/electric pump.

BOAT - JET SKIS - MISCELLANEOUS

Pelican 12' flat bottom boat w/rolling motor and two fold-up seats. 2-Bombardier Sea-doo GTX fuel injected jet skis w/trailer. R65 Ditch Witch, gas powered w/backhoe and angle blade. 8'x8' deer stand/shooting house. 4'x4' shooting house. Good Roads pickup bed salt spreader box. Concrete mixer w/dolly. Antique corn planter. 12'x20' Storage shed, insulated, porch, sheving, on skids. Martin houses, misc. bottle calf feeding equipment. Approx. 500' spool of 1/2 cable. 500 gallon stainless tank. 1000 gallon steel fuel tank. Grain bin. PVC pipe, peanut pipe, electrical conduit, aluminum wire, pex water pipe, 30 vinyl replacement windows, kerosene heater, Kemp gas powered mulcher, gun cabinets, 3 ton AC unit, U anchor bolts, upright freezer. Lots of scrap iron and old house for materials only.

Auctioneers Note: Excellent line of tractors, trucks, hay equipment, and farm related items! All tractors and vehicles are in good running condition, hay equipment is all field ready! Make plans to attend this fine auction! Check our Facebook @ Billy Sexton Auction Service and our website www.sextonauctions.com for more photos and additional items!

OWNER: DIAMOND H RANCH

BILLY SEXTON AUCTIONEERS



683 Missouri Avenue, West Plains, MO • Office: 417-255-2744

Billy Sexton 417-257-4595 • Justin Kraft 417-274-0073

www.sextonauctions.com • Not Responsible For Accidents

See this auction at: www.westplainsdailyquill.net/auctions

• Not Responsible For Accidents

BUYING MOBILE HOMES: Call David at VILLA HOMES IN ROLLA 573-578-8072. Rolla.

WANTED TO BUY ANTIQUE CARS: Convertible, Corvettes, unrestored, motors, parts considered. 870-324-1154.

TINY HOMES – You gotta see these!! In Ashland. amegamobilehomes.com 573-657-2176.

WANTED, TIMBER TO LOG ON SHARES: Honest, reliable, references. 417-533-4607, 417-664-1195.

WANTED, TIMBER TO LOG ON SHARES: Honest, reliable, references. 417-533-4607, 417-664-1195.

REGISTERED HEREFORD & ANGUS BULLS: Home raised, Some Show-Me Select Qualified. 573-701-7828. Belgrade.

CUSTOM SAW MILLING: Lebanon. 417-533-4607, 417-664-1195.


A CENTURY OF MISSOURI TIGERS BASKETBALL BOOK: by Michael Atchison, 258 pages, hardback. \$20. 417-532-2045 leave message. Lebanon.

HAY, SADDLES, BOOTS, SUNFLOWER SEEDS, HATS, STRAW: Black Gold, Diamond dog foods, clip ad, save \$2 on Diamond Taste of the Wild. George's, Tack, Saddle, & Feed. 573-346-7866. Camdenton.

3 POINT 10" POST AUGER: \$175. 417-733-7495. Buffalo

450 CASE: New motor, new under carriage, \$7,000. 417-532-5670.

ALLIS-CHALMERS: 5040 diesel with loader, good tractor. \$6,500. 573-864-2611. Ashland.



Meadowview Dutch Market

Discount & Surplus Groceries • Prices Subject to Stock on Hand

Call to Order
417-993-3017

Sale Dates May 12th, 2021 to May 18th, 2021 while supplies last!

DELI SPECIAL

CHIPOTLE CHEESE	REG. \$5.85.....	SALE \$5.35
SOUTHERN SMOKE HAM	REG. \$5.15.....	SALE \$4.65

TRY our Fresh Homemade DELI Sandwiches: TURKEY, HAM, ROAST BEEF, ITALIAN, BLT'S, PULLED PORK AND BLT PULLED PORK (MADE YOUR WAY)! COME IN OR CALL to order! ALSO Custom Deli trays! Veggie OR FRESH Meat-N-Cheese!

<i>Kosher Sandwich</i> Sliced Pickles \$2⁹⁹ 99 OZ.	<i>Small Sea</i> Shell Pasta 99¢ 15 OZ.	Bulk Cream Cheese \$1⁷⁹ LB.	Fully Cooked Flame Broiled BBQ Beef Patties \$1²⁵ LB.
-------------------------------------------------------------------------------------------------------------------------------	---------------------------------------------------------------------------------------------------------	-----------------------------------------------------------------------------------------------------	-------------------------------------------------------------------------------------------------------------------------------

R. B. Rice Medium Sausage 75¢ 16 OZ.	Great Flavors Ice Cream \$14⁹⁹ 3 GAL. EA.	Neapolitan Ice Cream \$1²⁵ 56 OZ. EA.	<div style="border: 2px solid red; border-radius: 10px; padding: 5px; text-align: center;"> OR 6 OR MORE 99¢ EA. </div>
---------------------------------------------------------------------------------------------------	-------------------------------------------------------------------------------------------------------------------	---------------------------------------------------------------------------------------------------------------	------------------------------------------------------------------------------------------------------------------------------------------------------------------------------------------------

Honey Graham Cracker \$1²⁵ 14.4 OZ.	<div style="border: 2px solid blue; padding: 5px; text-align: center;"> 16 Inch CHEESE PIZZA \$5⁹⁹ 3/33 OZ. </div> <div style="border: 2px solid blue; padding: 5px; text-align: center;"> Fancy Sliced PEACHES \$3⁹⁹ GAL. </div>
-------------------------------------------------------------------------------------------------------------	-------------------------------------------------------------------------------------------------------------------------------------------------------------------------------------------------------------------------------------------------------------------------------------------------------------------------------------------------------------------------------------------------------

MEADOWVIEW DUTCH MARKET
 417-993-3017 Hours: Mon-Thurs 8-5pm
 Fri 8-6pm • Sat 8-5pm
 23 Miles West on Hwy 64 • Right on T Hwy
 9 miles • Left on E Hwy 1 mile on Left

DUTCH COUNTRY STORE, LLC
 573-378-4395
 Hours: Mon-Thurs 8-5pm
 Fri 8-6pm • Sat 8-5pm
 5 miles East of Versailles off Hwy C on Kelsay Road

Versailles Dutch Country Store has Flowers!

NOW ACCEPTING CREDIT, DEBIT CARDS & EBT

THEY ARE HERE Tiny homes cute, cute, cute columbiadiscounthomes.com

TINY TINY TINY Homes Homes Homes – Call Marla 573-657-7040 chateauhomes.net

I BUY.....used mobile homes.: Call or text 573-338-6250 or email GregS.CDH@outlook.com

REGISTERED HEREFORD & ANGUS BULLS: Home raised, Some Show-Me Select Qualified. 573-701-7828. Belgrade.

FAINTING GOAT BUCKLINGS: Pure bred, package deal. 573-216-7796. Roach.

FIREARMS: Professional Repairs and Restorations. Baron's Gunsmithing. 573-363-5801, Camdenton.

INTERNATIONAL FARM-ALL CUB: New rear tires, new battery, runs fine. \$1,600. 417-543-3180. Wasola.

TWO GLASS INSULATORS: Identification book guides, \$6.50. 417-532-2045, leave message. Lebanon.

WHEEL HORSE RIDING MOWER: Model 520, hydraulic, 20 hp belly mower and front blade. \$650. 636-239-4124. Washington.

2003 MERCURY MARQUIS: All original, 1-owner, like new condition, kept inside, 124,000. \$4,900. 417-844-4019. Springfield.

BALDOR-RELIANCE: 1 hp, 250-volt, electric motor. New, sacrifice, \$50. 417-345-4562 or 417-599-9157. Buffalo.

ENGLISH BULLDOG PUPPIES: 5 males, lilac color, home raised, UTD shots, 417-989-9894. Thornfield.

VERNON 808 8MM MOVIE EDITOR: With box and 8mm splicer. Like new, original owner. \$65. 417-844-4319. Springfield.

MAKING THE IMPOSSIBLE *Possible*

For a fast and easy way to find out if
we have coverage in your area, check
out our website at splashin.net

**NOW SERVING
ST. ROBERT!**

Honoring our military with
no long term commitment!

No Suprises • Flat Rates

Serving the Tri-County Area.

Veteran & Locally Owned

splashin.net

Splash Wireless Internet LLC

573-460-2720 • 219 S. Walnut St. • Richland



WEEKLY TRADER MAGAZINE

YOUR AD GOES HERE!

Add **YELLOW** Color
For An Additional
\$3 Per Reader Ad

All ads will include Phone Number (unless requested to be deleted by advertiser) and City Or Town, Phone Number with Area Code counts as one word. City or Town counts as one word.

RATE: 80¢ Per Word. All Classified Ads Require Payment Before Print.

(1) 80¢	(2) \$1.60	(3) \$2.40	(4) \$3.20
(5) \$4.00	(6) \$4.80	(7) \$5.60	(8) \$6.40
(9) \$7.20	(10) \$8.00	(11) \$8.80	(12) \$9.60
(13) \$10.40	(14) \$11.20	(15) \$12.00	(16) \$12.80
(17) \$13.60	(18) \$14.40	(19) \$15.20	(20) \$16.00
(21) \$16.80	(22) \$17.60	(23) \$18.40	(24) \$19.20
(25) \$20.00	(26) \$20.80	(27) \$21.60	(28) \$22.40
(29) \$23.20	(30) \$24.00	(31) \$24.80	(32) \$25.60
(33) \$26.40	(34) \$27.20	(35) \$28.00	(36) \$28.80
(37) \$29.60	(38) \$30.40	(39) \$31.20	(40) \$32.00

Place your Classified Ad TODAY!

417-532-2800 • 800-665-8875

Fax: 417-532-8140

Or Mail To: P.O. Box 192 • Lebanon, MO 65536

For your convenience we accept MasterCard, Visa, Discover or American Express



DEADLINE FOR CLASSIFIED ADS: FRIDAY 4:00PM!

Name _____

Address _____

City _____ Email _____

State _____ Zip Code _____ Phone _____

Ad Total \$ _____ X # Weeks _____ = Amount Enclosed \$ _____

3 BUILDING LOTS: Near Terre DeLac, Bonne Terre, MO. Water, Sewer, Elec, all are 1 acre plus, beautiful wooded. \$11,000 each. Call 314-570-2257.

FEMALE ENGLISH CREAM GOLDEN RETRIVER: 2 years old, spayed, AKC, very friendly, calm. \$700 adoption fee. 630-687-0705. Falcon.

JOHN DEERE 310C DIESEL BACKHOE LOADER: Cab, 4x4 extend-a-hoe, with extra hoe buckets. \$12,500. 573-765-4406. Richland.

STARNES IS NOW HIRING!



Starnes Auto Body



588-7939 • 588-3159
22115 RT. 66 • LEBANON, MO

THE MOST COMPLETE LINE-UP IN THE INDUSTRY
Cutting widths from 36" to 104"



HUSTLER

AGRI-ENTERPRISES For Outstanding Products & Service
1-1/2 Miles South Of Licking, MO On Hwy 63
573-674-2203 • 1-800-653-7152
www.agri-enterprises.com

ROUTE 66 DINING 7 LODGING GUIDE: 183 pages, \$5.00. 417-532-2045. (leave message) Lebanon.

SEEKING PLUMBER: with experience in New Construction & Residential service plumbing. Must have experience with all types of plumbing repairs and the ability to trouble-shoot and repair many different plumbing problems. We are looking for someone that is outgoing, self-motivated, reliable and has quality ethics. Valid driver license with good driving record required. We offer excellent pay and long-term employment to the right candidate. Paid vacation, paid holidays and health insurance. Immediate employment available. Salary is based on experience. Please call. 573-348-2093.

TRUNK CHEST: From WWII, Drawer inside, excellent shape, from single corps. \$400 obo. 636-234-1888. Gerald.

MILK GLASS JUGS: Variety of sizes from OCS. 636-234-1888. Gerald.

BLUE/RED HEELER PUPS: Raised for 40 years. Good livestock dogs or pets. \$100 each. 660-553-2333. Cole Camp.

LA AND SC CASE PARTS: Case 960 Combine for Parts. 573-308-5884. Roach.

460 FORD ENGINE: Needs overhaul. \$100. 573-308-5884. Roach.

1908 ALCOHOL BURNER: \$100 each. 636-234-1888. Gerald.

House Hunting?
Call Vanessa Today!

Why Choose Me?

- Proven Marketing Strategies
- Competitive Commission Rates
- User-friendly online features for your convenience



Vanessa Ruble

Team Electrical & Plumbing
"The Professionals you can count on"
Electrical • Solar Power • Plumbing • Lighting Installation

100 % Satisfaction Guaranteed	Fully Licensed & Insured	\$100 Estimates with upfront pricing
-------------------------------------	--------------------------------	--------------------------------------------

For the best quality of work every time...
Give "Team" a call today!
417-349-6200 • www.teamelectricalplumbing.com

VEHICLE FOUR WHEEL DOLLY: 1000 lbs max weight. \$75 firm. 417-457-1023. Raymondville.

NEW IDEA: 5410 Disk mower, 10ft. \$4,450. 573-765-4406. Richland.

WANTED: 1000 gallon propane tank. 573-378-6337. Versailles.

HEALTHY KIKO YEARLING BILLY: \$300. 573-858-3238. Salem.

SIMPLICITY GARDEN TILLER: Rear tine, \$475. Lebanon.

KITCHEN FAUCET MOEN: Single lever, sprayer, new cartridge. \$45 obo. 636-239-2695. Washington.

FORD 8N TRACTOR: Good condition, Sherman transmission with 6 ft. 3-point finish mower. \$2,200. 417-766-1991. Rogersville.

NEW HOLLAND 7230 DISKBINE: With rollers. \$10,000. 573-765-4406. Richland.

WANTED: 10 cords of wood. 314-497-1898. Leasburg.

Turn every job into a job well done.



The New MX Series

55.5-63.4 HP

Factory cab available



QUARLES
SUPPLY COMPANY INC.

(417) 777-2391
quarleskubota.com

Come see the versatile, affordable new MX Series today.

- Spacious operator platform
- Comfortable climate-controlled cab with heat and air for year-round comfort
- Hydrostatic or gear transmission options
- Excellent loader lift capacity (2,275 lb.)

Together we do more.

New MX5400HST w/Loader Deal!

**MX5400HST
W/ Loader**

\$41,940
Financing Price

NEW Kubota MX5400HST

- 4wd, DIESEL, AG TIRES
- KUBOTA LOADER

- 6' ROTARY CUTTER
- 6' BOX BLADE
- NEW 20' KODIAK TRAILER W/ RAMPS



KubotaUSA.com

© Kubota Tractor Corporation, 2020. This material is for descriptive purposes only. Kubota disclaims all representations and warranties, express or implied, or any liability from the use of this material. For complete warranty, safety, incentive offer and product information, consult your local dealer or go to KubotaUSA.com.



KYMCO

NOW at WCT!



Like 150i Classic
Noodoe w/
Smart Features
\$3,075



Spade 150i LE
\$3,250



K-Pipe 125 LE
\$2,449



MXU 270
\$3,899



UXV 450i EFI
\$7,999
INCLUDES ROOF



Super 850x
\$1,999



MXU 450i
\$4,999



UXV 700i EFI
\$8,999
INCLUDES ROOF

Mongoose 70S
\$2,299



Mongoose 90S
\$2,599



WCT Farm & Lawn LLC

"Big enough to get what you need, small enough to know your name"

417-859-4311 • www.wctfarmandlawn.com

3299 E Evergreen Rd, Strafford, MO 65757