

FREE - TAKE ONE!

Vol. 27 No. 36

DECEMBER 10, 2020

800-543-8271 • 800-665-8875

WEEKLY TRADER MAGAZINE

 Find us on Facebook

@myweeklytrader
AUCTIONS PG. 13

VISIT OUR NEW WEBSITE! MYWEEKLYTRADER.COM

You go where the herd goes.
Get there for less.



SIDEKICK
Durability meets speed

40 MPH top speed

Gas powered

 **Kubota**. Together we do more.

Save now on the fast, durable Sidekick, featuring best-in-class acceleration and handling with cargo.* Stop in for a test drive today.

\$0 DOWN **0%** APR **60** MONTHS

OR

SAVE **\$2,200**

VISIT US TODAY FOR THIS LIMITED-TIME OFFER

WAYDES EQUIPMENT LLC

WAYDESEQUIMENT.COM • 510 GROVE ST CUBA, MO 65453 • 573-677-0707

KubotaUSA.com

*Class is based on these models: Polaris Ranger XP 900, John Deere X1N835M & Kawasaki Mule PRO-FXR. The handling comparison was performed on the FSAE SKIDPAD course in gravel conditions. © Kubota Tractor Corporation, 2020. \$0 Down, 0% A.P.R. financing for up to 60 months or customer instant rebates of \$2,200 are available on purchases of new Kubota RTV-X6850 Series equipment from participating dealers' in-stock inventory. Promotional rate available to qualified purchasers through Kubota Credit Corporation, U.S.A.; subject to credit approval. Example: 60 monthly payments of \$16.67 per \$1,000 financed. Customer instant rebates of \$2,200 are available on qualifying cash or standard rate finance purchases. Rebate is not available with 0% A.P.R. promotional financing. Some exceptions apply. Offers expire 12/31/20. Terms subject to change. This material is for descriptive purposes only. Kubota disclaims all representations and warranties, express or implied, or any liability from the use of this material. For complete warranty, disclaimer, safety, incentive offer and product information, consult your Dealer or KubotaUSA.com.



2020 TRAVERSE LT, FWD
STK. 33480



FOR CURRENT COMPETITIVE OWNERS
\$ 3,091 EMPLOYEE DISCOUNT FOR EVERYONE
\$ 3,000 CASH ALLOWANCE

\$6,091 BELOW MSRP¹

2020 BLAZER RS AWD
STK. 33249



FOR CURRENT COMPETITIVE OWNERS
\$ 4,025 EMPLOYEE DISCOUNT FOR EVERYONE
\$ 1,750 CASH ALLOWANCE

\$5,775 BELOW MSRP¹

2020 EQUINOX LS
STK. 33445



FOR CURRENT COMPETITIVE OWNERS
\$ 2,172 EMPLOYEE DISCOUNT FOR EVERYONE
\$ 4,250 CASH ALLOWANCE

\$6,422 BELOW MSRP¹

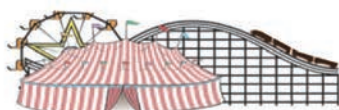
2020 TRAX LT AWD
STK. 33424



FOR CURRENT COMPETITIVE OWNERS
\$ 1,492 EMPLOYEE DISCOUNT FOR EVERYONE
\$ 3,500 CASH ALLOWANCE

\$4,992 BELOW MSRP¹

FIND NEW ROADS™



FAIRGROUND
Auto Plaza
DRIVEN TO SERVE YOU BEST...

100 Fairgrounds Road
Rolla, Missouri
(573) 364-1002
www.FairgroundGM.com



¹Visit chevroletemployeediscount.com for offer and vehicle eligibility. Dealer fees are extra and will vary. At participating dealers only. Must be a current owner of a 2006 model year or newer non-GM vehicle for at least 30 days prior to the new vehicle sale. Based on 2020 Traverse LT, FWD \$41,085 MSRP. Based on 2020 Blazer RS AWD \$49,945 MSRP. Based on 2020 Equinox LS \$30,075 MSRP. Based on 2020 Trax LT AWD \$25,265 MSRP. Not available with special financing, lease, fleet sales and some other offers. Residential restrictions apply. Take new retail delivery by 1/4/21. ©2020 General Motors. All rights reserved.



**TASK.
TASK.
DONE.**

RB16 SERIES

- REAR BLADES
20-40 HP 60", 74", 84" Widths
- Cat. 1 hitch
 - 7 Forward angles;
3 Reverse angles
 - 5 Tilt positions
 - 12" Offset left or right
 - 14" Moldboard height
 - 1/4" Moldboard thickness
 - Landscape Rake adaptable

For Outstanding Products & Service
AGRI-ENTERPRISES



1-1/2 Miles South Of Licking, MO On Hwy 63
573-674-2203 • 1-800-653-7152

www.landpride.com • www.agri-enterprises.com

SEARS CATALOGUE 1902 REPRINT.
\$8.50. 417-532-2045. Leave message.

EARNIE DEANE OZARKS COUNTRY BOOK: A collection of articles about folklore, places, people, customs, history. \$7.50. Lebanon. 417-532-2045, Lebanon. leave phone number.

NATURAL BOB-TAILED ENGLISH SHEPHERD PUPPIES: 573-663-7459, 573-760-5157.





BEEFALO WEANING AGE: Registered Purebred Beefalo Bulls, Black Red show quality. \$1,100. Circle Z Beefalo, Bourbon, 573-732-5763

BITTERSWEET COUNTRY BOOK: edited by Ellen Gray Massey, \$6.50. 417-532-2045, Lebanon. Leave phone number.

BUYING PRE 1960 BEER SIGNS: FALSTAFF, LEMP, BUDWEISER, CAPITOL, HAMMS, STAG, ANYTHING. 573-680-5377.

**VOTED
#1 BEST
Preowned Car
Dealership**

TIM'S USED CARS
(573) 341-3828 • 1334 South Bishop (Hwy. 63) • Rolla, MO
Next to Hwy CC • www.tims-used-cars.com

 <p>2014 GMC 2500 HD SLE, Crew Cab, 4x4, Duramax Diesel, Power Equipped, 147,xxx Miles Only \$29,900</p>	 <p>2011 FORD F-150 FX4, Crew Cab, 4x4, 3.5 Eco Boost, Power Equipped, 124,xxx Miles Only \$18,900</p>
 <p>2015 RAM 1500 BIGHORN Quad Cab, 4x4, 5.7 Hemi, Power Equipped, 95,xxx Miles Only \$23,900</p>	 <p>2011 RAM 1500 Quad Cab, 4x4, SLT, 5.7 Hemi, Power Equipped, 173,xxx Miles Only \$13,500</p>

LARGE SELECTION OF CARS, TRUCKS, SUVs & VANS!

**#1 Selling
FARM TRACTOR
IN THE WORLD**



Mahindra

Come See Us For Your Mahindra
Financing available for those who qualify
www.agri-enterprises.com

AGRI-ENTERPRISES
The Outstanding Products & Service
1-1/2 Miles South Of Licking, MO On Hwy 63
573-674-2203 • 1-800-653-7152



LEWIS WELDING AND REPAIR: Hay bale feeders with bale basket, corral panels, custom or built to order Ag implements, trailers, feeders. Call for pricing, 573-729-0272, Salem.

1965 FORD 1 TON FLATBED TRUCK: , runs well. \$3,000, 573-729-0272, Salem.

WANTED TO BUY ANTIQUE CARS: Convertible, Corvettes, unrestored, motors, parts considered. 870-324-1154.

CAMPER WINDOWS: (2) 29 3/4 X 21 3/4, (1) 23 3/4 X 21 3/4, (1) 34 X 3/4, (1) 47 3/4 X 21 3/4. \$200 FOR ALL. 417-664-8823.

KRONE HEAVY DUTY 4 BASKET TEDDER: \$4,950. 573-765-4406.

BORDER COLLIE: Puppies, first shots, dewormed, ready Now or Christmas, \$125, Call mornings. 573-759-2347.

TUFFY SPECIAL -Volume Prices 573-657-2176 amegamobilehomes.com

DON'T SCRAPE SNOW OFF YOUR VEHICLE THIS WINTER



CAROLINA CARPORTS • GARAGES • BARN • RV COVERS
Starting At \$1095.00

Red Iron Building Special
50' x 100' x 14' Pre-Engineered Red Iron Building
2:12 pitch • 26ga Painted Metal on Roof and Walls
4@12'X12' Framed Openings (3 on each side and 1 on one end)
2 @ 3'X7' Walk-In Doors
Materials Only **Now \$34,975** Plus Tax and Freight

RENT TO OWN - NO CREDIT CHECK

METAL PANELS
29ga 40 Year Warranty, Painted Metal starting at \$75.50 sq
29ga 25Year Warranty, Galvalume Metal starting at \$58.00 sq
29ga Commodity, White starting at \$66.75 sq

VISIT US @ JENKINSBUILDINGS.COM

JENKINS
Since 1964
ESTABLISHED & REPUTABLE

Showroom & Sales Office
Bolivar, Missouri 65613
(417) 326-4228
Next to Smith's Restaurant
Hwy. 13 & U

Corporate Office
Polk, Missouri 65727
(417) 852-4228
2 Miles South of Pittsburg
on Hwy. 64

Find us on
facebook
JenkinsBuildings.com
Prices Subject to Change



DP BRUSHCUTTER : (older), 8HP engine w/mower deck, runs good. \$350. 417-543-5375.

FORD 6600 DIESEL TRACTOR: Cab, new loader, \$7,750. 573-765-4406.

I BUY.....used mobile homes. Call or text 573-338-6250 or email GregS.CDH@outlook.com

ROME 8FT OFFSET DISK: \$3,750. 573-765-4406.

2020 KC CHIEFS MCDONALDS RED FRIDAY SUPERBOWL CHAMPS FLAGS: unopened, NIP \$15/each. Salem, 573-854-8132.

80 ACRES IN REYNOLDS COUNTY MO: township 31 North, range 1 East, Section 13, Major marketable timber, Deer and Turkey everywhere, Joins dead end county road. \$1,500 per acre. 417-331-0053, 417-331-4228.

DOYLE STAINLESS STEEL FERTILIZER BED: 15ft, Stainless catwalks, radar, one-owner, works good. \$6,500. 417-543-5674.

WANTED 16.9X34 REAR TRACTOR TIRE: good condition, 75%+ tread. Union, 636-234-5269.

AB ROLLER-SLIDER: Deluxe, stomach exercise machine, heavy duty, real 6 pack builder, detachable handles, for easy storage. \$60. Ava. 417-686-0032.

ANTIQUERITTER DENTAL DRILL: Works. \$350. 417-543-53753.

POOL TABLES: Installations, moves, recoverers, repairs, accessories, etc. 573-646-1700.

AMMUNITION: .223, 9mm, .45cal, bulk or box. 417-257-8385, pick-up or shipping available. www.chokeeamunitions.com and on Facebook.

WEATHERED BARN WOOD SIDING: 8" & 10" wide. 573-729-7226. www.pineridgerustic.com

FIREARMS: Professional Repairs and Restorations. Baron's Gunsmithing. 573-363-5801, Camdenton.

REGISTERED HEREFORD & ANGUS BULLS: Home raised, Some Show-Me Select Qualified. 573-701-7828. Belgrade

2 ASHLEY SOFAS AND LOVESEATS: 1-Leather, 1-cloth, 2 Hard Rock Maple end tables, Baldwin Electric organ, all in excellent condition. 573-765-3603.

Starnes Auto LLC
22115 Rt. 66
Lebanon, MO 65536
417.718.2707 Cell • 417.588.3159 Office
www.starnesauto.com

2000 CHEVY S10 WHITE, EXT. CAB, 2WD, V6, 4.3	\$5,500
2000 MERCURY SABLE LS SILVER, 181,XXX MILES	\$1,650
2001 CHEVY S10 MAROON, EXT. CAB, 2WD, 108,XXX MI	\$4,450
2003 GMC SIERRA RED, EXT. CAB, 4X4, LEATHER, 221,XXX MI	\$5,800
2003 FORD F150 WHITE, REG CAB, 5 SPEED, 222,XXX MI	\$3,200
2005 CHEVY SILVERADO MAROON, 4DR, 4X4	\$8,550
2006 CHEVY IMPALA SILVER, 139,XXX MILES	\$2,650
2006 CHRYSLER T&C BLUE, 185,XXX MI	\$2,850
2007 CHEVY HHR ORANGE, 112,XXX MI	\$3,250
2008 BUICK LACROSSE WHITE, 104,XX MI	\$4,850
2009 CHEVY HHR LT RED, 126,XXX MI	\$3,250
2009 SATURN VUE XR RED, LEATHER, SUNROOF, 130,XXX MI	\$5,250
2010 FORD FUSION SE GRAY, 111,XXX MI	\$5,200
2010 PONT G6 WHITE, 162,XXX MI	\$3,500
2012 CHEVY IMPALA LT RED, 106,XXX MI	\$4,950
2012 FORD FUSION BLUE, 86,XXX MI	\$6,500
2013 GMC TERRAIN SL TAN, 114,XXX MI	\$6,950
2013 FORD EXPLORER WHITE, LIMITED, 4WD, 104,XXX MI	\$12,950
2014 CHEVY TRAVERSE LS BLACK, 92,XXX MI	\$10,500

WANTED, TIMBER TO LOG ON SHARES: Honest, reliable, references. 417-533-4607, 417-664-1195.

CUSTOM SAW MILLING: Lebanon. 417-533-4607, 417-664-1195.

LOG SIDING SALE: 2X8 Western Cedar .99 ft/ Pine \$1.30 ft while supplies last. www.pineridgerustic.com 573-729-7226.

BB & PELLET RIFLE. \$75 each. 573-327-9068.

ONAN POWERED 3-PHASE GENERATOR: 5,000 Watts. \$350. 417-543-5375.

JOHN DEERE 6400: Diesel, Cab & Air Tractor, 4 wheel drive, 85 hp. \$22,000. 573-765-4406.

DREAM HOUSE -Online. chateauhomes.net
Call Marla 573-657-7040

ANTIQUe BRASS KITCHEN CABINET HARDWARE: 1 set of 54. \$30 obo 636-239-2695

Is Your Log Home **UGLY?**
Starting To Look
Professional Staining & Repair
(Log Homes & Wood Siding)
Call **Pine Ridge Rustic**
Log Home Building Supplies **573-729-7226**
www.pineridgerustic.com



KUSTER LOGGING
BUYER of Standing Timber
Oak and Walnut
Dozing Now Available
417-259-0047
References Available



EARN \$60,000/YR: Part-Time in the Live-stock of Farm Equipment Appraisal Business. Agricultural background required. Home Study Course available. 800-488-7570 or www.amagappraisers.com

PYRENEES/ANATOLIAN PUPPIES: parents are excellent sheep/guard dogs. \$250. 417-322-0161.

8 GALLON AUTO LUBRICATED AIR COMPRESSOR: New, \$80. 417-457-1023. Raymondville.

SACAGAWEA GOLDEN DOLLARS: Face value \$1. Original issue 2000, uncirculated. In rolls of 5. \$30. 417-686-0032, Ava.

NEW TUBE GRILL FOR 73'-86" SQUARE BODY CHEVY TRUCK: \$50 or trade. 573-734-2822.

2020 KC CHIEFS SUPERBOWL COCA COLA CANS: unopened, mint condition. \$15/6pack. Salem, 573-854-8132.

THE FIRST 100 YEARS OF SOUTH-WEST MISSOURI STATE UNIVERSITY: in Springfield. Hardbook, \$12.50. 417-532-2045, Lebanon. leave phone number.

500 GAL PROPANE TANK: (Older) \$300. 417-543-5375.

FIRESTONE MINI SPARE TIRE: Brand new, never used, 23" diameter, 5 hole, T125-70-R16, tubeless radial. \$85 firm. 417-686-0032. Ava

BIRDS OF MISSOURI FIELD GUIDE, \$4.00. IDENTIFICATION BIRDS OF NORTH AMERICA BOOK, \$4.00. 417-532-2045, Lebanon. Leave message.

QUALITY, FULL FACE PLASTIC SHIELDS: protective masks, reusable, brand new, direct splash protection, transparent, comfortable, 5 masks, \$20. Ava. 417-686-0032.

14" TIRES, different sizes call for price. 573-674-3830.

BELL #60 BASIC MILL FOR GRAIN: \$350. 417-543-5375.

TAKEUH DIESEL EXCAVATOR: with Hyd Tumb \$14,000. 573-765-4406.

ANTIQUe SINGER MODEL #G9292216: \$120. 417-543-5375.

LIONEL TRAIN SET: Steam engine, tender, caboose and other car, track and transformer. \$195. 573-364-7465, Rolla.

Buildings • Hunter's Cabins • Lawn Furniture



JAMCO Portable Buildings
800-688-2064 • 307 Enterprise Dr. • Seymour, MO • www.jamcobuilders.com

Rent To Own Plan

LIVE WORK PLAY

We're HIRING!

JOBs
are available in Lebanon!

lacledecountymohasjobs.com

WINCHESTER 150: round, steel, shellcase, 9mm, ammo \$50 per box. 417-844-4319.

CHRISTMAS PUPPIES BLUE & RED HEELER PUPPIES: Good working stock, UTD. 417-664-5926.

CASE 1840 DIESEL SKID STEER LOAD-ER: good tires. \$8,950. 573-765-4406.

WE STOCK FENCE!: High Tensile, woven, barbed, panels, fencers, t-posts +more!! Ozark Farm 417-322-0161.

ANDERSON PTO DIESEL ROCK PICK-ER: \$2,750. 573-765-4406.

FORD 7700 DIESEL CAB & WHEEL DRIVE TRACTOR: with loader. \$10,500. 573-765-4406.

BETTY CROCKER BAKING FOR TODAY COOKBOOK: Hardback. \$6.50. 417-532-2045. Lebanon. Leave message.

INGERSOLL RAND PORTABLE AIR COMPRESSOR: 85cfm, gas motor, on-trailer, works good. \$2,500. 417-543-5674.

HONEYWELL SPACE HEATER: digital readout, thermostat controlled, adjustable heat levels, high/low fan, ceramic tube. \$35. 573-364-7465.

CLARINET: with case. \$125 or trade. 573-327-9068.

NEW IDEA 5410 DISKMOWER: 10ft. \$4,450. 573-765-4406.

1995 CHEVY GEO METRO: 2-door, 2007 Dodge Mini Van, 2003 Ford Taurus 4-door, 706 International tractor with loader. For Sale or Trade. 573-756-3937 after 5 pm.

SPECIALIZING IN HEAVY DUTY GATES



Cow Country Gate Sales

Call Randy: 573-569-4754
or Home: 573-539-2528
Located at: Zimmerman Welding
16889 Hwy 52, Barnett, MO

DARDEN PROFESSIONAL TIMBER HARVESTING, BUYING STANDING TIMBER: Great prices, improve wildlife habitat and improve forest health. State Certified & Fully Insured! 573-247-4808 or 573-739-1122. Salem

ASHLEY PELLET STOVE: \$650OBO, Pipe included. 573-674-3830.

VILLA HOMES IN ROLLA: Has NEW and USED Mobile Homes. Call David for info: 573-578-8072.

NO \$\$\$ DOWN MOBILE HOMES- Call for details 573-499-9993 columbiadiscountnhomes.com

1994 CUTLESS CIERA: auto, air, 4-door, 174,xxx miles, runs great. \$800. 636-584-9476

QUALITY REPLACEMENT COWS: COW/CALF PAIRS, BRED HEIFERS AND BREEDING BULLS AND BUTCHER CALVES. TRUCKING AVAILABLE. Otterville, 660-619-5190 or 573-230-7700.

2019/2020 4x5 ROUND BALES: plastic twine, always shedded, pay for now and will store until April. Delivery or pickup. St James, MO. 573-467-5043 or 573-699-4577.

2017 JAYCO FLIGHT: 19.5ft pull-behind camper, excellent condition, queen bed, table converts to bunk, tub/shower, added- Tv, stabilizer/hitch bars, Price reduced. \$10,900. 417-293-3574, after 5pm or leave message.

A CENTURY OF MISSOURI TIGERS BASKETBALL BOOK: by Michael Atchison, 258 pages, hardback. \$20. 417-532-2045. Lebanon. Leave message.

0% for 4 Years



HEATMOR
Outdoor Wood
Furnace

as low as **\$168** per month

HEATMOR MIDWEST
Licking, MO 65542 • 573-674-2962

BUTLER LOGGING & TIMBER HARVESTING


WHEN QUALITY COUNTS

FAIR & HONEST PRICING
REFERENCES AVAILABLE

417-448-9323

ALL OF OUR FOREST RIVER VIKINGS
ARE PRICED AT WHOLESALE!

764V	2020 Viking 175FQ	MSRP-\$19,510.....	\$14,911
763V	2020 Viking 175BH	MSRP-\$20,090.....	\$15,811
761V	2020 Viking 18RBSS	MSRP-\$23,811.....	\$18,963
766V	2020 Viking 21FQ	MSRP-\$24,256.....	\$19,860
768V	2020 Viking 21BHS	MSRP-\$25,742.....	\$19,975
767V	2020 Viking 24RBS	MSRP-\$29,466.....	\$21,880



WehrRVs
11311 Bus. 60,
Mtn. Grove, MO

1-800-288-6827
www.wehrfordofmountaingrove.com

2009 MITSUBISHI LANCER: Needs transmission but does run in first. \$1,250, 417-543-5375.

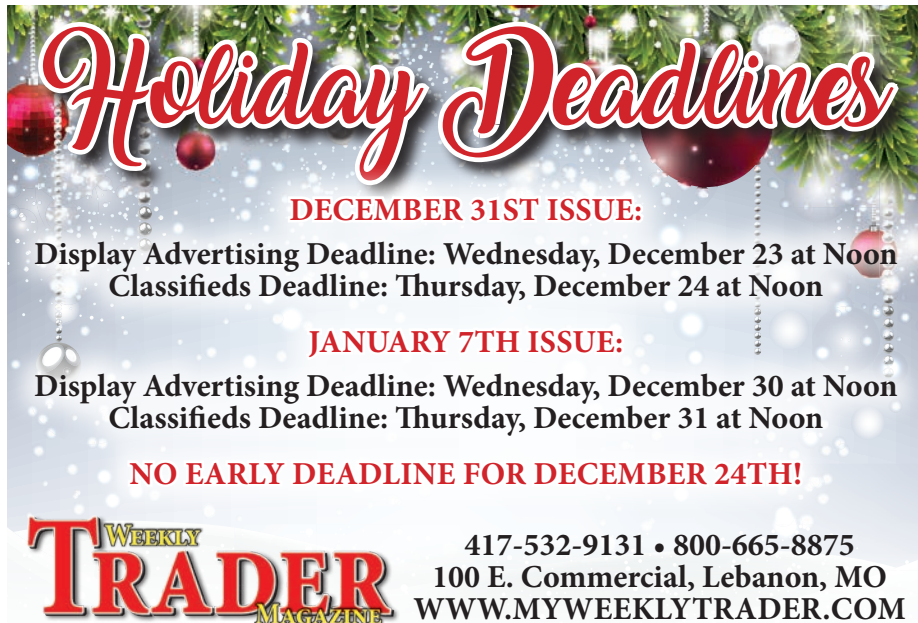
2 WOODEN KITCHEN TABLES AND CHAIRS: \$100 or trade. 573-734-2822.

KIDS LITTLE TYKES RED CAR BED: w/ mattress. \$150. Desloge, 573-327-9068.

KITCHEN FAUCET MOEN: single lever, sprayer, new cartridge. \$50obo. 636-239-2695.

JOHN DEERE 467 ROUND BALER: monitor, kicker, net wrap, 4x6, \$8,750. 573-765-4406.

2-255/65 R18 TIRES: good for spares. \$10each. 417-457-1023.



Holiday Deadlines

DECEMBER 31ST ISSUE:
 Display Advertising Deadline: Wednesday, December 23 at Noon
 Classifieds Deadline: Thursday, December 24 at Noon

JANUARY 7TH ISSUE:
 Display Advertising Deadline: Wednesday, December 30 at Noon
 Classifieds Deadline: Thursday, December 31 at Noon

NO EARLY DEADLINE FOR DECEMBER 24TH!

WEEKLY TRADER MAGAZINE
 417-532-9131 • 800-665-8875
 100 E. Commercial, Lebanon, MO
 WWW.MYWEEKLYTRADER.COM

1997 DODGE GRAND CARAVAN: runs well, 235K, \$1,950; 2003 Chevrolet Astro Van, AWD, runs well, 264K, \$1,800. Salem, 573-729-0272.

NORDIC CROWN II HOT TUB: W/steps. \$2,000 obo, Washington. 636-239-2695.

BEST OF THE BEST FROM MISSOURI COOKBOOK: \$6.50. 417-532-2045, Lebanon. leave phone number.

PRIZE COUNTRY QUILTS BOOK: hardback, 230 pages, \$5.00. 417-532-2045. Lebanon. Leave phone number

FRONT AND REAR BUMPER FOR 62'-64' CHEVY NOVA: \$100for both or trade. 573-734-2822.

WANTED: Old Sling Wrecker. 573-734-2822

2 BALE RINGS: \$25 each Newburg, 314-403-1457

1991 HONDA ACCORD: Runs. \$990. Lebanon, 775-997-5913.

24" SCHAFFER WAX MACHINE: and box of wax. \$150 417-543-5375.

MENNONITE COUNTRY-STYLE RECIPES COOKBOOK & KITCHEN SECRETS: 679 pages, \$6.75. 417-532-2045. Lebanon. Leave message.

NANCY DREW/HARDY BOYS: hardbacks, \$2 each, call for more info, leave message with number. 417-532-6561.

GUARDIANWARE: 1930-1950's, Turkey roaster with lid. \$195. 573-364-7465.

MYSTERIES OF THE OZARKS VOLUME III: A collection of stories compiled by Ellen Gray Massey, \$6.50. 417-532-2045, Lebanon. leave phone number.



Register to win the Weekly Trader Pedal Power Tractor!
 (A \$260.00 value)

PERFECT GIFT FOR CHRISTMAS!

Register from November 6 to December 12 at these participating retailers:

- Boat Town Brewing • Falcon Floor Covering • S&S Recycling • Lindsay Ford
- C&C Farm & Home • Sakelaris of Lebanon • Lindsay Chevrolet Used Cars • Lindsay Chevrolet \$2500 Lot • Fairground Auto Plaza • Agri Enterprises • First Light Outfitters
- Neighborhood's Home Improvement Store • A Lane Tire • House of Ivey

WEEKLY TRADER MAGAZINE **BIG BOY TOYS**
 417-532-9131 • www.myweeklytrader.com

CALUS LOGGING

20 YEARS EXPERIENCE

Buying Standing Timber
Walnut & Oak

Joe Calus, Owner
CERTIFIED 417-926-4606 • MTN. GROVE

NEW HOLLAND TN65 DIESEL UTILITY TRACTOR: with new loader. \$10,500. 573-765-4406.

GOOD USED ELECTRICAL APPLIANCES: Call 417-543-5375. David Lehmann, Mansfield.

INDUSTRIAL MAG-MATE 400LB LIFT MAGNET: \$350. 417-543-5375.

HOBART 200 AMP ARC WELDER: 4-cylinder Jeep engine, runs well. \$1,500. 1-573-729-0272, Salem.

JOHN DEERE 2955: Diesel Tractor, Cab & Air, with JD 720 loader. \$27,000. 573-765-4406.

2-JOHN DEERE REAR RIMS: 1138 ,new. \$200. 417-766-1991

OZZIE SMITH: Hall of Fame induction, Hartland figurine, new in box, \$14.00 573-854-8132.

2 BIG CHRISTMAS WREATHS: 3ft in diameter. \$30 each obo 636-239-2695.

FRUEHAUF 71 MODEL CATTLE TRAILER: 45ft, aluminum, straight-deck, 90%tires. \$5,000. 417-543-5674.

2004 VW BEETLE DIESEL: 164,000miles. \$6,500. 417-256-2561.

VISIT US ONLINE AT
WWW.MYWEEKLYTRADER.COM

Cheyenne Acres
Horse & Tack

BUY - SELL - TRADE
by Rolla, MO
Call For Directions & Availability

Call Kip
573-368-9402



80 ACRES IN REYNOLDS COUNTY MO: township 31 North, range 1 East, Section 13, Major marketable timber, Deer and Turkey everywhere, Joins dead end county road. \$1,500 per acre. 417-331-0053, 417-331-4228.

EARNIE DEANE OZARKS COUNTRY BOOK: A collection of articles about folklore, places, people, customs, history. \$7.50. Lebanon. 417-532-2045, Lebanon. leave phone number.

OFFICIAL TRACTOR OF TOUGH™



Marshfield Machinery Inc.

222 E. Madison • Marshfield, MO 65706
417-859-2117 • www.marshfieldmachinery.com

MahindraUSA.com © 2020 Mahindra USA Inc.

NEW MAHINDRA TRACTORS

7085 4WD & LDR 85HP	IN STOCK
6065 4WD & LDR 62HP	IN STOCK
4540 2WD & LDR 41HP	IN STOCK
2638 4WD & LDR 38HP	IN STOCK
1635 4WD & LDR 36HP	IN STOCK
1626 4WD & LDR 26HP	IN STOCK

USED TRACTORS

MF 2705E 4WD BACKHOE 48HP	27,500
AGCO LT75A CAB LDR 100HP	27,500
MF 6170W/LDR 97HP	17,500
MF GC1710 BACKHOE 23HP	15,000
CASE 1490 83 HP	7,500
MF 175 63HP	6,000
IHC 464 W/LDR 45HP	5,500
CASE IH 235W/MOWER 18HP	3,500
FORD 2000 31HP	3,500
MF 65 48HP	3,000

USED ROUND BALERS

MF 1745 4X5	8,500
NI 6254 4X5	7,500
VERMEER 5055I MESH	7,500
GEHL 2480 4X5	6,500
JD 435 4X6 MESH	6,500
VERMEER 554XL 4X5	5,500
HESSTON 560 5X6	3,000
HESSTON 550 4X6	3,500
HESSTON 530	3,500
NH 850 5X5	1,500
VERMEER 605D 5X6	750

USED MOWER/CONDITIONERS

MF 1383 13FT	19,500
--------------	--------

USED CUTTERS

RHINO SE15-4 15FT	6,500
LANDPRIDE 15FT	5,500
BRUSHWACKER 15FT	5,500
BUSH HOG SQ84T 7FT	1,200
BUSH HOG 109 9FT 3PT	1,000

USED MISC.

HAYBUSTER 107C DRILL	17,500
HAYBUSTER 107 DRILL	12,500
HAYBUSTER 107C DRILL	11,500
HAYBUSTER 107C DRILL	10,500
FRONTIER BALE PROCESSOR	8,500
VERMEER 8WHL RAKE	1,750

Marshfield Machinery Inc.
222 E. Madison • Marshfield, MO 65706
417-859-2117
www.marshfieldmachinery.com

2000 BUICK LASABRE LIMITED: 4dr, 3.8-V-6, Leather, 75% Tires, 190,000k, owned by mechanic, clean car. \$3,250. 417-543-0048, 417-924-8550.

SEARS CATALOGUE 1902 REPRINT. \$8.50. 417-532-2045. Leave message.

NATURAL BOB-TAILED ENGLISH SHEPHERD PUPPIES: 573-663-7459, 573-760-5157.

BITTERSWEET COUNTRY BOOK: edited by Ellen Gray Massey, \$6.50. 417-532-2045, Lebanon. Leave phone number.



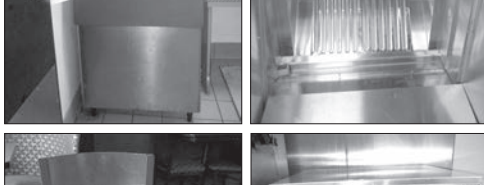
HUGE RESTAURANT EQUIPMENT LIVE AUCTION

MONDAY, DEC 14 - 9:00 AM

CONTENTS FORMERLY OF MOE'S SOUTHWEST GRILL & RECENTLY CLOSED RESTAURANT EQUIPMENT DEALER

104 W THIRD ST • FAIR PLAY, MO 65649

SELLING ➔



NORLAKE 8'X10' M/L WALKIN FREEZER OR COOLER W/FLOOR, 115V, 1 PH, SELF CONTAINED!! TRUE SGL & DBL GLASS DOOR REACHIN COOLERS-2 HOSHIZAKI LATE MODEL ICE MACHINES-SANDWICH PREP TABLES-CAPPUCCINO MACHINE-BOTTLE BOX COOLER-REFRIGERATED CHEF'S BASE-BERKEL & HOBART 12" MEAT SLICERS- 2 CONVECTION OVENS, 1 WITH BOTTOM PROOFER-BLODGETT 12 GALLON ELEC TILT KETTLE-RANGES-CLAMSHELL GRILL-OTHER GRILLS-CHARBROILER-SANDWICH GRILLS-FRYERS-SALAD BAR-STEAMTABLES-2 ALTO SHAAM HEATED HOLDING CABINETS, LIKE NEW-TORTILLA CHIP WARMER-GILES FSH-5 60" VENTLESS RESTAURANT HOOD SYSTEM SO NO HOLE IN ROOF & NO EXHAUST STACK, THIS HOOD IS ONLY 1 TO 2 YEARS OLD & NEW COST \$14,000, COMES WITH ANSUL R-102 FIRE SUPPRESSION SYSTEM, EXCELLENT! PS-200 3 COMPARTMENT POWER SOAK SINK POT, PAN & UTENSIL WAREWASHING SYSTEM W/2 FAUCETS & FAST SPRAYS, 208V, 3 HP, 3PH, LIKE NEW-OTHER SINKS-CMA LOW TEMP COMMERCIAL DISHWASHER-WORKTABLES & EQUIPMENT STANDS-OUTSTANDING HEAVY DUTY WIRE SHELVING-CAN RACKS-MVE 450 CARBO MIZER BULK CO2 SYSTEM-EXCELLENT SEATING INCL ALL MATCHING TABLES, CHAIRS & BOOTHS! OTHER RESTAURANT EQUIPMENT-HUGE AMOUNT BRAND NEW, NEVER USED SMALLWARES INCL CHINA, GLASSWARE, TABLEWARES, POTS, PANS & OTHER COOKWARES, BAKING ITEMS, UTENSILS, BARWARES, JANITORIAL ITEMS & OH SO MUCH MORE!

NOTE: VISIT OUR WEBSITE & CLICK ON THE "AUCTIONS" TAB FOR COMPLETE LISTING AND PHOTO GALLERY. PLEASE NOTE EARLY START TIME OF 9 AM DUE TO THE HUGE QUANTITY OF ITEMS. WE WILL BE RUNNING 2 AUCTION RINGS PART OF THE DAY SO BRING A FRIEND! OUR BUILDING IS PACKED WITH EXCELLENT EQUIPMENT FROM MOE'S SOUTHWEST GRILL OUT OF THE BATTLEFIELD MALL & ALL WAS HOOKED UP & WORKING AT TIME OF REMOVAL. ALMOST ALL ITEMS ARE 6 YEARS OLD OR NEWER & IN EXCELLENT CONDITION WITH OPERATOR'S MANUALS. FANTASTIC SELF CONTAINED FREEZER (OR COOLER), EXCELLENT ICE MACHINES WHICH HAVE BEEN TESTED TO WORK, NICE COOKING ITEMS & OUTSTANDING SEATING! HUGE, HUGE AMOUNT OF BRAND NEW, CURRENT INVENTORY SMALLWARES FROM A RECENTLY CLOSED RESTAURANT EQUIPMENT DEALER. MARK YOUR CALENDAR & MAKE PLANS TO ATTEND THIS SUPER AUCTION!

MARON RESTAURANT EQUIPMENT, LLC & AUCTIONS CO.
 417-327-5619 • WWW.MARONRESTAURANTEQPT.COM

LARGE FURNITURE REDUCTION AUCTION

LODGE FURNITURE-CARVINGS-GLASSWARE-MISC

AUCTION

**10:00 AM • SATURDAY
DECEMBER 12, 2020**

LOCATED: 1093 N CYNTHIA DR, NIXA MO: FROM HWY 160/MASSEY BLVD & KATHRYN GO WEST 1/10 MILE TO AUCTION ON LEFT. FOLLOW SALE SIGNS. BREAKFAST & LUNCH AVAILABLE . **FOR PICTURES SEE WEBSITE OR AUCTION ZIP.COM TO PREVIEW CALL 417-830-0153**

LARGE LOT OF WOODEN HAND CARVED FURNITURE. EACH PIECE IS UNIQUE AND EACH ITEM IS DESIGNED DIFFERENTLY, OVERSTOCK ITEMS WOULD BE GREAT CHRISTMAS GIFTS. THIS IS A VERY LARGE AUCTION WITH THOUSANDS OF PIECES, PLEASE PLAN TO ATTEND

LODGE FURNITURE & WOOD CARVINGS ALL HAND MADE FROM SEVERAL DIFFERENT WOOD ROOTS

SEVERAL DINETTE TABLES* SOME DINETTE CHAIRS* TABLE TOPS* SEVERAL BOOKSHELVES* 4 DRAWER CHEST'S* OCCASIONAL TABLES* NESTING TABLE SETS* CORNER SHELVES* WINE HOLDERS* COAT/HAT RACKS* SEVERAL CHEST & CABINETS* FACE CARVINGS MADE FROM TREE'S* JEWELRY BOXES* SEVERAL RATTAN PIECES, WINE HOLDERS, VASES* WOODEN BOWLS, DIFFERENT SIZES* HAND CARVED EAGLES, AQUATIC'S* PICTURE FRAMES* SILK THREAD FRAMED WALL ART* MARBLE & GRANITE STATUES, EXAMPLE EAGLES, FROGS, DOG W/SNAKE, LIONS* BASKETS*

GLASSWARE-MISC

GLASS BALLS W/INSIDE PAINTINGS* GLASS TEA POTS W/PAINTING* GLASS VASES, DECORATIVE BOWLS ALL SHAPES & SIZES* PICNIC BASKETS* DECORATIVE PILLOWS* SEQUIN & BEADED PURSES* CHINESE FANS* CHINESE MASK'S* CHOPSTICKS* UMBRELLAS* WOMEN'S GLOVES* RUSSIAN NESTING DOLLS* EAGLE FIGURINES* GLASS CHRISTMAS ORNAMENTS* CHINESE JEWELRY BOXES*

FOR MORE PICTURES SEE WEBSITE OR AUCTION ZIP.COM

OWNER: CAROLINE CARNAHAN

AFFILIATE OF SPRINGFIELD MARINE

SALE CONDUCTED BY: MELTON AUCTION & REALTY CO LLC

ROGER MELTON, NIXA MO • PH 417-830-0153 OR 417-725-1801

BRAD COLE NIXA MO PH 417-840-2950 • TANNER FOSTER GALENA MO PH 417-840-5519

ANNOUNCEMENTS MADE ON SALE DAY WILL TAKE PRECEDENCE OVER ANY OTHER PRINTED MATERIALS.

NOT RESPONSIBLE FOR ACCIDENTS OR LOSS OF ARTICLES ON OR NEAR SALE SITE.

EMAIL: roger@meltonauction.com • WEBSITE: MELTONAUCTION.COM

PUBLIC AUCTION

Saturday, Dec. 12 - 10 a.m.

Auction Location: 16886 Brown Rd., Houston, Mo.

Directions: From Houston, Mo., take Hwy. 63 south approximately 5 miles to Hwy. UU. Take Hwy. UU to end of blacktop. Turn left on Hawkeye Road, go to Brown Road, turn right on Brown Road. Take Brown Road to auction locations. Watch for Bruce Scheets auction signs.

Visit www.brucescheetsauctions.com to view photos. **Payment System:** Cash • Checks accepted with proper identification. MasterCard, Visa, Discover (3% fee applies)

OWNERS:
JOHN AND DONNA BUCHANAN

International 484 Diesel Tractor w/Allied Loader (slick)



Power Tools & Shop Equipment

Agri Fab leaf vac trailer w/gas engine • Stihl straight-shaft weed eater • Husqvarna rear-tine tiller (nice) • Poulan Pro gas leaf blower • Small stack tool chest • Wilton bench vise • Little Giant ladder • Belt & disc sander • Auto SPA buffer • Porter cable pancake air compressor • Husqvarna 55 chain saw • Oils • Solvents • Nuts & bolts • Other.

Household

Ashley couch w/dual recliners & matching recliner • Frigidaire chest freezer • Brother portable sewing machine • Full-size bed • Queen bed • Home Interior • Cabinet server • Bookcase • Wood desk • Books & magazines • VHS tapes • Dishes • Pots & pans • Other.

Auctioneer's Note: Clean well cared for merchandise. Looking forward to seeing you at the auction. Bruce

Outdoor and Misc.

Concrete bird bath • Concrete flower pots • Concrete patio bench • Patio furniture • Lawn dump cart • Wheel barrow • Planters • Lawn seeder • Electric limb saw • Large flower pots • Hose reel • Metal lawn chairs • Metal fire pit • Metal patio bench • Wood picnic table • Wind chimes • Westpoint lady's bike • Child's bike • Lawn & garden tools • coolers • Other.

2004 Chevrolet Impala 4/Door Loaded, 3.8 Engine



Antiques & Collectibles

License plates • Galvanized wash tub • 10-gallon cream cans • Wood high chair • Graniteware • 33 Records • Metal lawn chairs • Spindle-back chairs • Wood dining table • Samantha & Barbara Lee Dolls (NIB) • Other.

Hunting & Misc.

Oneida compound bow w/hard case • Lynch Turkey box call • Lee's Champion gobbler box • Deer wall mounts & misc. sheds • Whitetail and Mule deer Encyclopedias • Other

DRIVER'S LICENSE OR PICTURE I.D. REQUIRED • TERMS: CASH OR APPROVED CHECK   OR 

BRUCE SCHEETS AUCTIONS

www.brucescheetsauctions.com • HOUSTON, MO • We Accept Mastercard, Visa & Discover

Auctioneers:
COL. BRUCE SCHEETS

Cell: 417-260-2118

COL. TRAVIS TOOLEY

Col. Travis Tooley: 417-293-6909

Col. Josh Wheeler: 417-349-0265



All announcements made day of sale take precedence over any printed matter. Not responsible for lost or stolen merchandise. Not responsible for accidents.

• LUNCH WAGON • APPRAISAL SERVICE
• RAIN OR SHINE

Cashiers / Clerks:

Andi Scheets

Shelly Mutzebaugh,

Suzanne Smith, Shelly Cauldwell

Ringmen: Terry McCallister and Vance Farmer



ONLINE ONLY EQUIPMENT AUCTION

FRIDAY DECEMBER 18, 2020

Bidding closes at 11:00 am CST

www.SextonAuctioneers.com
BID NOW!



2011 Caterpillar 953D



2002 John Deere 450H LT



1996 Caterpillar D4C XL



1990 John Deere 755B



1984 Caterpillar 943



1990 John Deere 444E



2007 Peterbilt 379



2016 Case TV380



1992 John Deere 690E LC



2003 New Holland LB110



2006 Caterpillar 120H



2000 Grove MZ66D



Bobcat Clark 731



2015 Kioti KL7320



2014 Peterbilt 579



2010 Kenworth T660



1987 Mack R688ST



1982 Peterbilt 362



2016 Cornhusker 800



1990 Mack DM690S



1988 Ford LT9000



1996 Ford LT9000 Mixer Truck



2011 International 4300 Box Truck



2011 Ford F-350 Super Duty



2001 Dodge SLT Laramie 3500



1934 Ford 3 window Coupe



2017 Acura RDX (LOW MILES)



2000 Chevrolet Corvette



2012 RZR EFI Polaris Ranger



30+ New Skid Steer Attachments



New Magnum Hot Water Pressure Washers



2021 EQUIPMENT AUCTION CALENDAR

FEBRUARY 25	APRIL 29	JUNE 24
AUGUST 26	OCTOBER 28	DECEMBER 16

www.SextonAuctioneers.com

417-372-0124 email: Sales@SextonAuctioneers.com

Equipment Showing
 on Dec 12th
 8:00am-2:00pm
 for certain items at
 Sexton Auctioneers
 5152 US HWY 63,
 Pomona MO 65789

VISIT WEBSITE FOR PICTURES

EARLY START

ABSOLUTE FARM AUCTION

SATURDAY, DECEMBER 12th - 9:00 A.M.

Location: 3347 S Hwy E, Norwood, MO **Directions:** From Norwood Go North approx 4 miles to auction on left. **WATCH FOR CHADWELL AUCTION SIGNS.**
Payment System: Cash • Debit Card • Credit Card (Debit / Credit Card Fee Will Apply)
 Checks approved if known by auction company. **VISIT: WWW.CHADWELLAUCTIONS.COM**

GLEN & DOROTHY KNEPP

LARGE DINNER BELL

TRACTORS

5325 JD Tractor w/ Canopy (dual remotes, 540 PTO, left hand reverse, 4spd, hi med lo, 5100hrs) • 4010 JD Dual Hydraulics, 540 PTO, Syncro Transmission • JD 4020 Gas (for parts only) • NH 7635 w/NH 7310 loader (dual remotes, 4spd hi lo transmission, left hand reverse, 4700hrs) • 3039 Ford w/ Canopy (4spd, hi lo, dual remotes) • 7700 Ford Tractor (dual remotes, 540 PTO, 4spd, hi lo transmission) • JD 4020 (syncro transmission, dual hydraulics, 540 PTO, 1650hrs on overhaul engine) • 4020 JD w/Cab (dual remotes, 540 PTO, late model console) • 7710 Ford w/TA-26 Westendorf Loader (dual remotes, 4spd, hi lo transmission)



FARM EQUIPMENT ~ FARM RELATED

Workmaster 3pt Hydraulic Post Driver • NH BR 7060 Baler Silage Special w/Slicer 10,000 bales • (2) Miller Pro 2175 Wagon • JD 285 1 O' Disc Mower w/Pyramid Caddy • Kelly Bagger 8x200 540 PTO • 892 NH Chopper w/2 Row Head • 700 JD Corn Planter • Sitrex Magnum MK10 12 Wheel Hydraulic V Rake • JL Haysaver on wheels • 4 Basket Teter • Vicon 9 Wheel V Rake • (2) NH 1412 Disc Bine • NH 1411 Disc Bine • (2) NH BR7060 Silage Special Net Wrap Balers (38,xxx & 22,xxx bales) • 510 International Double Drill Disc • Krone AM 2835 3pt Disc Mower • 462 NH 7' Disc Mower • (2) Kuhn 700 8 1/2' Disc Mower w/caddy • NH 12 Wheel V Rake • 3pt 8' Woods Hydraulic Angle Blade • 313 Kuhn Disc Mower • NH 616 Disc Mower w/4760 KMC 7' caddy • 15' Batwing Rhino Brushhog • 5409 New Idea Disc Mower • Approx 20 Concrete Feed Bunks • Wooden Mineral Feeders • Single Axle Silage Wagon • Bale Ring Feeders (poly & metal) • WW Portable Squeeze Chute • WW Squeeze Chute • Lincoln 25, 000 Watt PTO Generator on Trailer w/Air Compressor & Torch • 24' Flatbed Gooseneck 3 Axle Trailer • 20' Gooseneck Flatbed Trailer (no title) • Hoof Trimming Table w/Accessories • 2 Ton Creep Feeder on Wheels • Rear Rock Guard for Tractor Window • Fertilizer Buggy • WW 20' Gooseneck Stock Trailer • Haybuster 107 No Till Drill • JD 750 Mixer/Grinder • Silage Wagon w/Auger • Hesston 7140 2 Row Corn Chopper • JD Hydra Push Manure Spreader (for parts only) • 300 Gallon Sprayer w/Booms • New Idea Corn Picker w/2 row head (need repair) • ffl Allis Chalmer 430A 4 row Corn Head • 4 Wheel Wagon • Eberhardt Siopresse w/ new bushhog gearbox • Hesston 12 Wheel V Rake • 3 Hay Wagons Various Sizes • 4 Wheel Rubber Tire Hay Wagon • Creep Feeder • Cone Shape Bale Ring Feeders • 3 pt 6' Cultivator • 3pt 6' HD Tuffline Blade • Poly Calf Hutches • Danuser 3pt Post Hole Digger • 100 Gallon Fuel Tank w/Hand Pump on Trailer • 36' Grain Elevator on Wheels • 6x10 Box Trailer (no title) • 8x20 Tandem Dual Tilt Flatbed Pindle Hitch Trailer • 16' Neckover Gooseneck Stock Trailer • (2) Pickup Bed Trailers • 16' Bumper Trailer • (3) Grain Wagons • Gehl Scavenger II Manure Spreader • Plastic Water Tanks • Concrete V Bunks • 9 Shank Chisel Plow • Hydraulic Log Splitter for Skid Steer • JD 17 Shank Chisel Plow • 8' Field Roller • HD Head Gates • Hesston 4 Basket Teter • Sitrex 4 Basket Teter • New Idea 1007 Disc Mower w/Caddy • Sunflower 12' Off Set Disc • Case 8' Off Set Disc • 2 ATV Sprayers • 1 O' Dump Trailer • Concrete Mixer • 3pt Seeder • 16' Hay Saver Silage Wagon 2 axle • 3pt Silage Bale Mover • 16' Bumper Stock Trailer (no title) • NH 12 Wheel V Rake • 14' Smoothing Disc • Pull Type Cultivator • 3pt 2 Bottom Disc • 3pt Hydraulic Wood Splitter • Rome 8' Off Set Plow • 1 O' Disc • 50' Grain Auger on Wheels • 16' Bumper Trailer • Bale Unroller on Wheels (homemade) • Other



2 LARGE CAST IRON KETTLES

OUTDOOR ~ MISC

Gravely 36" Pro Walk Commercial Mower • JD F525 46" Riding Mower • 14.9 - 34 Firestone Tractor Tires • United 18-33 Tractor Tires (new) • 16.9-38 Multi Trac Tractor Tires • Callicrate Banders • Freeze Brand Irons • Stihl Chain Saws • 16' Giggling Boat w/Trailer • Gigs • Dog Crates • Assorted Hand Tools • McCormick Corn Sheller • 2 Wheel Concrete Cart • Cow Dehorners • Misc Milking Equipment • Misc Mower Parts • Misc Lumber • Misc Tin • Other

SHOP ITEMS

Lincoln 225 Ranger Welder Generator 259hrs • Onon 5500 watt Portable Generator • Grease Guns • Log Chains • Band Saw • ATV Sprayer • PTO Shafts • Tarps • Vise • Straps • Top Links • Tire Rack • Oxygen Bottles • Acetylene Torch Set w/Bottles • Misc Hydraulic Cylinders • Die Hard 250 amp Battery Charger • Other

AUCTIONEER'S NOTE: Glen & Dorothy are retiring! Everything will sell to the highest bidder with no reserves! Food provided by the Amish Community! Come spend a full day with us! Hope to see you there. **Thanks, Shawn**

DRIVER'S LICENSE OR PICTURE I.D. REQUIRED • TERMS: CASH OR APPROVED CHECK **OR**

Chadwell
 Auction Service, LLC
www.chadwellauctions.com

Auctioneer:
SHAWN CHADWELL
 417-746-4038 ~ Cell: 417-830-0209
 Ringmen:
 John Williams Jr. ~ 417-349-0480
 Weston Chadwell ~ 417-349-0727

Clerk:
SHELLY CHADWELL
 Cell: 417-880-8449
 Cashiers:
 Shawn Irby • Marla Chadwell
 Kati Roberts • Emily Chadwell

PROFESSIONAL SALES MANAGEMENT

LUNCH WAGON • APPRAISAL SERVICE • RAIN OR SHINE
 All announcements made day of sale take precedence over any printed matter.
 Not responsible for lost or stolen merchandise. Not responsible for accidents.

FARM & ESTATE AUCTION

Friday, December 11th, 2020 ~ 10:00 AM

LOCATION: 512 Brentwood, Carl Junction, MO At Dead End (Watch For Signs)

Auction For Herschell Salchow Estate
Angie Casavecchia, Public Administrator



Antique, Modern Furniture, Appliances, Also Antiques, Collectibles & Households

Ant Pic Safe, Ant Wood Tables, Ant Wood Drop Leaf Table, Ant Buffet, 2 Ant Desks, Prim Metal Cabinets, Retro Dresser W/Mirror, Ant Console Stereo, Ant Delco Adv Metal Cabinet, Ant 50's Chrome Kitchen Table, 1950's Electric Cook Stove, School Desks, Couch, Chair, Full Size Bed, Heaters, New Refrigerator In Box, Washer & Dryer, Wood Heat Stove, Lots Of Exercise Equipment, Over 25+ Vacuum Sweepers (Some Like New), Ant JD Metal Tractor Seat, Advertising Signs, Old Wood Advertising Boxes, Ant Metal Fans, Ant GE Radio, Galvanized Pcs, Graniteware Pcs, Ant Yard Gate, Old Records, Old Knick Knacks, Old Glassware, Old Pottery, Several Sm Antique, Primitive & Household Pcs Stored In Building Unable To See

Autos, Mowers, Tools, Bikes, & Outdoor Related Items

1977 Grand Prix Rare 2 Door Classic Car Has Auto Trans, 301 Motor & Only 28,000 Original Miles (Rare Car, Hard To Find!!!), 1982 Lincoln Continental 4 Door Car Fully Loaded, Auto Trans & Only 18,000 Original Miles (Excellent Shape), 1990 Subaru Legacy 4 Door Sports Car W/Auto Trans, Fully Loaded & Rare Boxer Motor, Only 16,000 Original Miles (Very Clean Car), 1994 Buick El Dorado 32V North Star 2 Door Car Fully Loaded, Like New, Miles Unknown But Will Not Have Many, 1992 Geo Metro Car, Miles Unknown, New Craftsman 42" Riding Mower, Snapper Riding Mower & Other Riding Mowers, Sm Welder, Stihl & Other Chainsaws, Wheelbarrows, 2 Air Compressors, Sm Electrical Tools, Sm Hand Tools, Log Chains, Scaffolding, Over 25+ Push Mowers

Some Are Like New Or New, Some Are Self Propelled, Wood Carts, Lumber, Used Tin, Lg Lot Of Shop Related Items Inc Nuts, Bolts, Screws, Also Oils & Cleaners Of Various Kinds, Over 200+ Bicycles Some Are New Inc Mountain Bikes, Racer Bikes, Ten Speed Bikes, Children's Bikes, Also Some Ant Bikes, Most Are All Major Brands That Are Used In Each Type Of Use In This Category, (If You Are Looking For A Bike We Will Have It Here For You!!!), Hundreds Of Other Items Not Listed

Tractors, Truck, Equipment, Hay & Farm Related Items

1986 Ford 6610 Diesel Cab Tractor W/Wide Front End, Dual Hydraulics & Only 74 Original Hours (Just Like New), JD 2150 Diesel Tractor W/Wide Front End, Only 1800 Original Hours (Like New), Oliver 550 Gas Tractor W/Wide Front End & Only 626 Hours (Like New), JD 320 Johnny Popper Style Tractor W/Wide Front End, New JD 327 Square Baler, New JD 660 Side Delivery Rake, New 6 Ft JD 240 Disc Mower, 10 Ft Bush Hog, 6 Ft Bush Hog, 5 Ft JD 503 Bush Hog, 3 Pt JD Drag Harr, 3 Pt Carry All, 2 Homemade Box Type Utility Trailers, 1977 Bumper Hitch 14 Ft Stock Trailer (Just Like New, Never Hauled Any Cattle), 1987 High Sierra 3500 GMC Truck W/Standard Trans, 350 Motor, Heavy Duty Flatbed & Only 12,000 Original Miles (Just Like New), 2 Fuel Tanks, New Stand Up Horse Feed Bunk, Water Tanks, Gates, Approx 200 Bales Of Square Mixed Grass Hay, Several Other Farm Related Items Not Listed Due To Being Buried

Auctioneers Note: It Is An Honor Again To Be Conducting An Excellent Auction For The Public Administrators Office. This Is An Excellent Offering From The Salchow Estate As There Are Several Items That Are Either New Of Just Like New That Will Be Offered Throughout Auction. Tractors & Equipment Have Always Been Stored & Shedded & Never Been In Weather. Most Items Were Bought & Never Used Or Used Very Little. Rare Opportunity To Purchase Excellent Equipment & Items Like This. If You Are A Bicycle Or Lawn Mower Enthusiast You Do Not Want To Miss This Auction As There Are Several New Items Here As Well. Excellent Antiques, Collectibles & Tools As Well. Please Plan Now To Attend. **Sale Order: Antique, Modern Furniture, Households & Antiques Will Start Auction Then Sm Tool Related Items. At Approx 1:00 PM Will Offer Autos, Tractors, Equipment, Farm Items Then Move Into Bicycles & Mowers. Remainder Of Tools & Outdoor Will Finish Auction. See Ya There!!!**

Terms: Cash or check with proper ID. Now accepting most major credit cards. Nothing removed until settled for. Statements made the day of sale takes precedence over printed material. Everything sold as is where is. Not responsible for accidents. Restroom available. Concessions Provided. Check our website for upcoming auctions and for additional pictures!!



NANCE AUCTION SERVICE

No Matter How BIG or small, We Do Them All!!!

Col. Bill Nance 417-214-0093

In God We Trust

Philippians 4:13

ESTATE AUCTION

Due to the death of **Will Scheider**, we will sell the following personal property at the Rolla Horse Auction building located on Hwy. 68 west 2 miles from St. James, Missouri. Follow Lorts Auction Today signs on

Saturday, December 12, 2020

Sale to start 9 a.m. – COVID-19 practices will be in place

ANTIQUES • HOUSEHOLD • GUNS • SHOP TOOLS • JD LAWN MOWER

Household, Furniture & Antiques

Symphonic 20 inch flat screen TV
Dark wood dresser w/mirror — Twin bed
Hard maple chest of drawers
Hard maple desk — Office chair
Several animal type pictures
Collection of hats — Collection of Barbie dolls
Lots of bedding — Cast iron dinner bell
Dark wood post type bedroom set w/dresser & mirror
Chifferobe w/cedar lined clothes closet
Computer desk — Dell computer model 745
HP C4780 printer — Power air fryer
Collection of Danbury Mint vintage cars & trucks
Cast iron trucks & tractors
Large collection of Beanie Babies (1993-1999)
Collection of oil lamps (all sizes)
Collection animal figurines — Liquor decanters
Metal lanterns — Night stand
Queen size bed — Oak file cabinet w/2 drawers
Book shelf — Small office desk
Sylvania 36 inch flat screen TV
Wooden dresser w/mirror — Milk cans
Crank up barber chair — Pot belly stove

Stainless gas BBQ grill — Pots & pans
Black Stone portable 3 ft. flat grill
Star deep fryer — 2 slow cookers
George Foreman grill — LEM French fry cutter
32 quart cooker — Instant pot
Onion machine — 12x12 pop up canopy
Glass top patio table w/4 chairs
RCA stereo — Sleeping bags
Camouflage bedding — DVDs
Lot of books — Collection of wall plates
Keurig 1 cup maker — Tiffany lamp
Large cast iron kettle w/stand
Ninja mixer — Corningware dishes
Snap-on mugs — Dishes — Cookbooks
Wine glasses — Cast iron pots & pans
Hard rock maple table w/2 leaves & 6 chairs
Hard rock maple hutch (matches above table)
14 inch Symphonic flat screen TV
Dry sink — Sanyo DVD/VCR
Element 38 inch flat screen TV
6 ft. tall hutch w/glass shelves
Reichman pitcher & glasses — Toaster
Campbell soup collection of cups & dishes

Coca-Cola collection: Mugs, pitcher & glasses,
Christmas ornaments, glasses, signs, tins, lunch
box, trays, cast iron truck & dishes (service for 8)
3 section corner couch w/reclining built in sleeper on
end (brown)
2 marble insert end tables
2 oak end tables & coffee tables
6 ft. oak frame display cabinet w/light
Emerson 30 inch flat screen TV
Wall hangings & pictures — Corner shelf
Entertainment center — Magnavox DVD/VCR
Kenmore 16 cu. ft. deep freezer
Camping equipment — Table lamps
Camp chairs — Assortment of coolers
Fishing rods — Tackle boxes
Assortment of wagon wheels (all sizes)
Cement outside yard deer statues
Ornamental yard cannons (shop-made)

Tools & Shop Equipment

DeWalt cut off saw — Load binders — Tow chains
Cornwell 10 drawer tool box (top box) — Drill bits
Air chisels — Air impacts — Mikita zip saw
Cummings milling machine — Punches
Duracraft bench grinder on stand — BBQ on stand
Snap-On tool box, 6 ft. x 4 ft. on wheels, 20
drawer, 30 inches deep
Precision mini lathe, 7 inches x 12 inches,
Cummins brand
Gear pullers — Shop stools — Camp burners
Several Snap-On tools — Lot of air hoses
3/4 inch air impacts — 1/2 inch impact sockets
3/4 inch drive socket sets — Files — Rasps
Snap-On line wrenches — Torch heads & tools
1/2 inch ratchets — 3/4 inch ratchets — Shovels
Screwdrivers — Assortment of pliers — Rakes
Snap-On wrenches (all kinds) — Pipe wrenches
Slide hammer — Pry bars — Mac air drill
Air grinders — Blue Point hole saw set
Bushing tools — Air sanders — Body tools
Welding clamps — 1 inch impact socket set
Threaders — Vice grips — Crescent wrenches
Welding tools — Meters & testers — T-posts
Pipe cutters — Blue Point 3/4 inch impact
1/2 inch impact — 24 inch crescent wrench
Assortment of 1/2 inch Snap-On sockets
Freeport belt driven drill press — Jack stands
Table top drill press — Aluminum steps
Assortment of cabinets — Aluminum step ladders
Jumper cables — Delta 10 inch miter box saw
Nut & bolt cabinet — C clamps — Air nailers

Assortment of hardware — 3 ton super winch
Sears 55000 BTU propane heater — Electric drills
Gas cans — Stihl BG55 leaf blower — Hand saws
Stihl BG65 leaf blower — Stihl FS45 weed eater
Welding table w/Wilton vise — Reese hitch carrier
Lincoln square wave tig 175 welder — Post driver
Lincoln 225 amp welder on wheels — Fire hydrant
DeWalt 6 inch grinder — Welding table on wheels
Extension cords — Stihl MM55 garden tiller
60 gallon upright air compressor — Bolt cutters
4 inch hand grinder — Crimping tools — Levels
Air hose on reels — Jackson 2 wheel wheelbarrow
DeWalt metal shears — Lincoln air grease gun
Bosch 175 2g 6 inch grinder — Milk house heaters
Model Snap-On tool box (1/8 scale) — Post bar
Model Snap-On trucks — Craftsman 6 inch grinder
Acetylene torch set w/hoses & gauges
Troy-Bilt rear wheel 22 inch mower
Gas powered twin cylinder compressor
**John Deere 345 20 hp. liquid cooled lawn
mower w/Kawasaki motor, 48 inch cut, power
steering, 811 hours**
Kobalt 6 inch vise on stand — Welding table
Ridge tool vise on stand — DeWalt drill
Werner 20 ft. extension ladder — Squares
Werner 16 ft. aluminum ladder — Hatchets
Cub Cadet 2 wheel lawn cart — Tow straps
3 tier saddle racks (floor stand)
Sportsman 4000 watt generator
Sportsman chainsaw — Automotive supplies
Heavy duty Reese hitches — HD steel saw horse

Guns & Safes

Guns to sell at 1 p.m.
FFL gun rules will apply

Remington md 870 super mag 12 gauge
camouflage
Remington md 870 12 gauge pump walnut
"Ducks Unlimited"
Henry 22 rifle, lever action (NIB)
Heritage 22 revolver w/16 inch barrel (NIB)
Rossi 223 rifle w/2099 barrel
12 gauge pump
Single shot 22
Marlin md 336 35 Rem w/Simmons scope
Remington md 870 Express 410 banded rib
Remington md 1100 12 gauge
Ruger 44 mag w/Weaver scope
Winchester md 67 22 bolt action
Marlin md 1894 44 Rem mag
Bushnell binoculars — Ammunition
6 mm rifle w/Leupold scope, bolt action
Martin 1895 45-70 government rifle
Stack on metal gun safe for 11 guns, green
Collection of hunting & pocket knives
**Liberty gun safe, 3 ft. wide by 22 inches
deep, black**
**Liberty Freedom gun safe (fat boy),
42 inches wide by 28 inches deep, grey**



An open house to view the safes
will be held from noon to 2 p.m. on
December 5, 2020 at the Scheider
residence, 14 Marion Drive, St. James,
Missouri. Safes will be sold from the
auction location day of auction.

Many more articles too numerous to mention – COVID-19 practices will be in place

"like" us on Facebook - Lorts Auction Service or view this auction online at
www.threeriverspublishing.com or auctionzip.com (auctioneer ID #42353)

The Estate of Will Scheider

Brenda Riley, POA

573-201-1687 • St. James, MO 65559

AUCTIONEER'S NOTE: Lots of nice clean
items at this auction, which will be held in the
heated building and in the pavilions of the Rolla
Horse Auction in case of bad weather. Lots of
surprises to be uncovered with lots of boxes still
to be unpacked. Furniture and antiques will sell
beginning at 9 a.m., followed by tools. Guns will
sell at 1 p.m. COVID-19 practices will be in
place. We request that you observe COVID
social distancing and CDC guidelines when
possible.

Lorts Auction Service

TERMS: Cash or check with photo I.D. • Not responsible for accidents or losses, should they occur. • Nothing removed until paid for. • No buyers fee.
Lunch Served — ALL ANNOUNCEMENTS MADE SALE DAY TAKE PRECEDENCE OVER ALL PRINTED MATERIALS —

SALE CONDUCTED BY **LORTS AUCTION SERVICE** • ST. JAMES, MO 65559 • 573-699-4308 • 573-263-0243

AUCTIONEERS: Larry W. Lorts & Gary R. Lorts Licensed and Bonded

ONLINE AUCTION • ONLINE AUCTION • ONLINE AUCTION • ONLINE AUCTION • ONLINE AUCTION • ONLINE AUCTION •

LIVING ESTATE ONLINE ONLY AUCTION BIDDING OPEN NOW.

MOVING OUT-OF-STATE AND MUST DOWNSIZE

INSPECTION/PREVIEW: Saturday, December 12th, 2020, from 11:00 AM - 4:00 PM ONLY at 714 South Pin Oak Drive, Springfield, MO 65809

AUCTION CLOSSES: Thursday, December 17th, 2020

PICK UP TIME WILL BE: Saturday, December 19th between 9:00 a.m. & 2:30 p.m. at 714 S. Pin Oak Drive, Springfield, MO 65809.

Woodworking tools and equipment, Coke collectibles, silver coins, shop equipment, Vintage Boston Whaler boat with motor & trailer, hunting & fishing supplies, cameras, Scag zero-turn mower, generator, enclosed utility trailer, lumber, furniture, kitchenware, RC airplane parts & supplies, guns, ammo, Over 800 lots in this variety of merchandise, make sure you view all the lots, you don't want to miss anything.

WWW.WARDENAUCTION.BID

<https://www.apro.bid/affiliate/ed-warden-1990/>



WARDEN AUCTION & MORE

(573) 336-2367 or (573) 528-0729

Ed Warden – Auctioneer/Broker

Adam Wright - Associate

www.wardenauction.com

TERMS
Cash, Credit,
Debit or Approved
Check
ID Required for
Bid Number



TERMS
Not Responsible
For Accidents
or Losses
Nothing Removed
Until Settled For

ONLINE AUCTION • ONLINE AUCTION • ONLINE AUCTION • ONLINE AUCTION • ONLINE AUCTION • ONLINE AUCTION •

ONLINE AUCTION • ONLINE AUCTION • ONLINE AUCTION • ONLINE AUCTION • ONLINE AUCTION • ONLINE AUCTION •

ONLINE AUCTION • ONLINE AUCTION • ONLINE AUCTION • ONLINE AUCTION • ONLINE AUCTION • ONLINE AUCTION •

PUBLIC AUCTION

Saturday, December 12th beginning at 9:00 A.M.

Located at: 13634 Mt. Zion Rd, Versailles, MO 65084. Directions: From Versailles take Hwy 5 North to Buggy Rd, right and go 1 mile to Mt. Zion Rd, left approx. 1/4 mile, left at red school, last house on drive. Formally Eddie's tractor repair. Watch for auction today signs.

FARM EQUIPMENT & TRAILERS

S-300 Bobcat on steel — 6'6" smooth bucket
 6'6" tooth bucket — 5'6" smooth bucket
 Heavy duty grapple bucket — 4' pallet forks
 7' snow blower — Bobcat hyd. post driver
 22 ton wood splitter — D-4 Cat w/ bad starter motor
 N.H. 479 haybine — Manure spreader pto drive
 16' gooseneck stock trailer w/ title — 6,000 lb pallet forks
 16' bumper pull flat bed trailer w/ title — 3 pt Ferguson ripper
 Boat trailer no title — 2-Pickup bed trailers
 Claas 66 round baler (needs work) — 2-wheeled log trailer
 20" peerless roller mill pto drive — S-40 Genie lift
 2-Older wagon gears — 3 pt. Ferguson potato plow
 Salvage MF 1215 compact tractor w/ loader
 Salvage IH hydro fork lift

WOOD WORKING TOOLS & MISC.

Craftsman 2 hp planer molder — DeWalt 12" planer
 Craftsman rotary tool bench w/ planer and table saw
 Craftsman variable speed wood lathe
 Craftsman belt and disc sander — Craftsman 12" band saw
 Bench top 5 speed drill press — 2 speed scroll saw
 Grizzly G1066 drum sander — Grizzly G045 jointer
 Craftsman pro table saw w/ jointer
 DeWalt 12" compound miter saw
 Craftsman router w/ stand — Lot router and shaper bits
 Misc. electric power tools — Air tanks — 10 ton floor jack
 Misc. wrenches, sockets, mechanic tools — Retractable hose reel
 2 1/2 ton floor jack — 600 gal hyd oil tank
 Predator 8,750 portable generator
 Kinetice water softener — Boilers 4-500,000 btu gas boilers, 5-16 ft
 boiler exhaust pipe, 2-16' x 14" stainless steel pipe
 Lot boiler plumbing, controllers — Lot new & used pvc pipe 1" to 10"

PARTS INVENTORY

2 New replacement tractor seats — New and used AC parts
 Battery cable from 6" to 60" lengths
 100-plus new motor oil — Lot new oil filters
 1/4 barrel JD 15W-40CJ-4SM motor oil
 Lot new replacement light bulbs, switches, pressure switches, freon,
 shim washers, stop leak, compressor oil, etc.
 Fuel hose, heater hose, hitch pins, stabilizer bars, block heaters,
 penetrating oils, anti-freeze, etc.
 Light bar display with lights — LED bulbs, flashing lights

Owners: Edward & Esther Faye Kilmer

For more auctions go to www.auctionzip.com ID # 47012

Auctioneers
 Larry Martin & Loren Martin



MARTIN AUCTIONS

1-660-337-6471



Auctioneers
 Mel Yoder

BUILDING MATERIALS

3-5 1/2" x 8" x 16' I beam — 2-7" x 16" x 50' I beam
 6-8" x 26' purlins — 20-8" x 20' purlins — Lot 8' purlins
 Approx. 20 base angle 2 1/2" x 3" x 20' — 10-4" x 6" door angle
 8-3" x 6" c channel — 2-3" x 8" c channel — 6-c channel
 2-each 2" x 5", 2" x 6", 2" x 7" x 10' heavy c channel
 Lot white Hi-rib metal 5' to 26' — Lot trims
 Lot scrap metal and usable steel misc.
 12' air curtain — 2 steel walk in doors — 4 loading dock seal kits
 Lot Styrofoam insulation 2" x 2' x 8' — 20-2" x 12" x 6'
 30-pcs micro foil insulation 6' x 6' — 20-1/2" rebar
 4-3" x 3" x 10' angle — Stainless tank — Galv. Feed trough
 Scrap aluminum boat — 500 gal propane tank for grill or smoker
 2-2 yard self tipping metal dumpsters — 19-14' x 12" TGI joists
 3/4" T and G sheeting — 7/16" sheeting — 1/2" plywood
 Lot heavy coated copper wire, misc wire

CONSIGNED BY: JOHN DAVID KILMER

Cat D4D dozer turbo, 6 way cat blade, 1000 and 540 rpm pto, 1
 set hyd remotes — 2-MF rigid grain tables 13'
 Massey Ferguson 300 diesel combine good running machine right
 out of the field — 1-MF flex 15' grain table
 MF 4 row wide corn head — MF 2 row wide corn head
 JD 336 hay baler — JD 1327 disc mower w/ flail
 NH 256 hay rake w/ dolly wheel
 JD gear w/ flat bed and hoist
 NH wagon gear used for header wagon
 JD grain drill 12 hole mechanical lift
 IH 65 corn planter 4 row corn bean plates
 IH air corn planter 4 row w/ JD units
 IH 37 12' disc — JD 3 section harrow
 Kewana 13' field cultivator — Kraus 18' center field disc
 JD 3 btm roll over plow 16" — Oliver 4 btm 14" trailer plow
 IH 3 btm 14" trailer plow — Tracks for combine
 Straw chopper for 300 MF — Pickup bed trailer
 JD 317 riding mower 48" deck, 4 way hyd blade, 3' tiller
 JD hyd cyl — JD 4 row wide 3 pt cultivator
 JD 2 row front mount cultivator
 Massey Harris clipper combine w/ canvas has manual
 Broad cast seeder — 10' x 10' overhead door
 6" rigid augers various lengths — JD B 1948 model new engine
 overhaul, radiator, carberater, excellent rubber

Many more items not listed. There will be something for everyone,
 with some surprises. Hope to see you at the auction.

Thanks, Larry



Will sell the following located 5 miles North of Cross Timbers, Mo. on Hwy. 65
Watch for Crawford Auction Service signs.

SATURDAY, DEC. 12, 2020 - 10 A.M.

★ COINS ★ GUNS ★ TRACTORS ★ TRUCKS ★ TRAILERS ★ TOOLS ★ MISC.



**Trucking Available
- Loader on Site**

COINS/GUNS (Sell @ 10 a.m.)

1912 & 15 \$5 Indian gold
1878-79-90-91 CC Silver dollars
1883 CC Silver dollar
GSA Black box w/card
1886 O Silver dollar
Other silver dollars
1876 Seated quarter
1899 P Barber quarter
1830 Bust half dollar
1908 D Barber half dollars
26 Indian head pennies
1973-74-75 Proof sets
Other coins

Guns

Ruger Black hawk 41mag, 4-5/8, belt & holsters
Iver Johnson 32 Smith & Wesson, double action

Thompson Center Encore, 25-06, scope
Thompson Center Encore barrels
Super 14" 30 Herrett
Super 14" 6MM TCV w/Burris rings
Super 14" 41mag
Super 10" 30-30 Win
Super 9" 6MM TCV
Thompson Center Contender barrel 22 Hornet
Remington 760 Gamemaster 35 Rem.
H&R 10ga 3-1/2" 36" barrel, full choke
Savage 20ga 3" full choke
New England 410 single shot
Springfield 22 single shot meteor target
Anderson AR .223 w/2clips
HiPoint 40 S/W
Ruger MKIII Target Model 22LR
Lot asst. ammo

TRACTORS

John Deere 300 gas backhoe
Ford 9N
Massey Ferguson 1085 dsl, cab

TRUCKS/ TRAILERS

'05 Chev 4500 dsl Allison auto steel flatbed, 180K
'79 Chev grain truck, V8, 5-2 spd, 20' bed & hoist, tag axle
'74 IH V8 5-2 spd, 16' bed & hoist
'88 Cosse GN 20' stock trailer, newer oak floor
Hillsboro GN 24' flatbed, dovetail & ramps
'11 Maxey GN 28 Lo Profile flatbed w/ ramps
(2) 16' B/H utility trailers
10' Dump truck bed, complete

**See Website
for more
pictures!**

MACHINERY

JD 12' Wheel disk
Ford 8' 3pt blade, HD
Silage wagon, wood sides

MISC.

'07 John Deere HPX Gater, 4x4, 1200 hrs.
John Deere Gater 6x4, 1000 hrs.
John Deere Gater 2x4, 700 hrs.
Kawaski 360 Prairie 4x4, 4-wheeler, camo, low miles
(20) 10' portable cattle panels, new
Other misc. panels
Rd bale feeder
4-5 Implement seats
5-6 Small metal wheels
24' F/G ladder
Stihl 251 chain saw, new

SAM CRAWFORD Auction Service LLC



TERMS: Cash or good check. Nothing removed until settled for. Not responsible for accidents. Lunch available. Statements made day of sale take precedence over printed matter. All items sell as is. No warranties given or implied.

417-998-6629
Cross Timbers, Mo.

CrawfordAuctionService.com



Sam
417-328-9137

Chase
417-399-1904

Chance, CAI
417-298-1781

Tom Poynter
Jack Lancaster

Sam CRAWFORD AUCTION SERVICE LLC

Due to the passing of Dorothy Feaster, will sell the following located in the Quincy area, 16 miles South of Warsaw, Mo. on Hwy. 83 or 13 miles East of Osceola, Mo. on Hwy. 82. Watch for Crawford Auction Service signs.

Saturday, December 19, 2020 – 10 a.m.

280 ACRE FARM & IMPROVEMENTS – HOUSEHOLD – TOOLS – FARM MISC.

280 Acres +/- Stock Farm & Improvements Sells @ 12 Noon

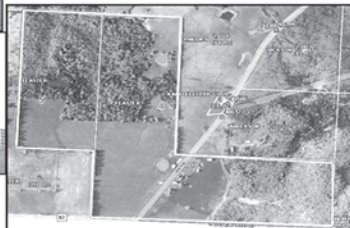
• Sells in 2 Tracts - Will not be put together •

Tract 1 - 82 Acres +/-, approx. 25 acres open pasture & hayland, balance is timber. Fronts Hwy. 83 on West & CR on South. Perimeter & cross fencing. 1985 3 Bedroom, 2 bath all electric brick home, 2000+ sq. ft. w/full basement w/kitchen & bath down, large garage, heat pump, well, septic, gazebo. 3 Large barns, double car garage, 6 smaller buildings, 1000 bushel grain bin, pipe fenced barn lot, white vinyl yard fence, auto cattle waterer.

Tract 2 - 198 Acres +/-, approx. 100 acres open pasture & hayland, large pond, large open front hay/machine shed, partial concrete floor. Hwy. 83 frontage on East side & Hwy. 82 on South side, perimeter & cross fencing. Taxes: Approx. \$1,300 - All in Benton, Co., Weaubleau School.

Address: 40810 Hwy. 83, Quincy, Mo. 65735

"Dorothy always took a lot of pride in her farm and its appearance. Well kept yard and garden. Nice home and good set of outbuildings. One of the top farms in the area. One time chance to buy this type of farm. Shown by appointment with auctioneer."



Household/Misc

Amana washer; Kelvinator refrigerator
Older Kelvinator refrigerator
3 Chest freezers (2 med, 1 lg)
Older gas range; Grandfather clock
Wood dining table & 4 chairs, dish hutch
Drop leaf breakfast table & 2 chairs
Antique drop leaf table
Antique oak rd table
5 Antique wood dining chairs
Antique lamp table; 4 Antique cedar chests
Cedar wardrobe; Antique Aladdin oil lamp
Antique flat top trunk
4Pc B/R set, queen
(2) 3Pc B/R sets, full
Leather couch; Cloth couch
Glider rocker; 2 Recliners
2 Swivel rockers; End tables, other tables
Sanyo flat screen TV
TV table; Curio cabinet
Lamps; Pictures, wall decor
3-4 Sweepers; Fans, heaters
Kitchen Aid mixer
Other asst. small appliances
Lot asst. pots & pans; Club pans
Pyrex, Corningware, Tupperware
Some antique dishes
Precious Moments figurines
Bird & animal figurines
Other knick knacks
Lot bedding; Lot material

Quilts, Afghans, Tea towels
Treadmill; 2 Metal storage cabinets
Plastic patio table & chairs
BBQ grill, NIB; Ice chests & coolers
Christmas decorations
Wicker baskets; Fruit jars
Granite pans; Antique metal bed
Lot totes & boxes unopened
Metal lawn chair; Much more



Yard/Garden Misc

Kawasaki 550 mule
Grasshopper 623 ZTR 52" 25hp Kohler, 5 hrs, new
Gravelly ZTR 50" 22hp
John Deere 318 lawn tractor, runs?
DR push trimmer; DR 4' harrow, NIB
Murry Tiller garden tiller
(2) 12V sprayers; Sev hand sprayers
Troy Bilt pony garden tiller
Rubbermaid wagon
Brush push saw, 8hp
Push mower; Garden seeder
Small air compressor
Weed eaters; Long handle tools
PR plastic car ramps
Alum ext. ladder; Sev wire cages
Lot yard & garden supplies
Oil, misc; Crosscut saw
4 Martin houses; Bird feeders
Nut cracker; Lot plastic milk crates
Asst. lawn ornaments
3-4 Live traps; Elec power washer
Gas cans; Ext. cords
Wood chicken crate
4-5 Galv tubs; Galv buckets
Milk strainer; Stainless milk bucket



Farm Misc

John Deere wagon w/grain sides
McCormack hammermill, shedded
Old P/U bed trailer
2 Older double side creep feeders
5-6 Farm gates; Rd hog feeder
300 gal fuel tank & stand
Steel standard oil barrel
500 Gal propane tank
Roll snow fence; 10 Gal. milk can
3 Wood kegs; Set of harness
Sev. chicken feeders & waterers
Wood P/U stock rack
12-15 Steel posts; Other misc.

Sam CRAWFORD Auction Service LLC



TERMS: Cash or good check. Nothing removed until settled for. Not responsible for accidents. Lunch available. Statements made day of sale take precedence over printed matter. All items sell as is. No warranties given or implied.

417-998-6629
Cross Timbers, Mo.

CrawfordAuctionService.com



Sam
417-328-9137

Chase
417-399-1904

Chance, CAI
417-298-1781

Tom Poynter
Jack Lancaster

Dorothy Feaster Trust

PUBLIC AUCTION

Sunday December 13, 2020 • 9:00AM
940 S. Iron Mountain Rd Fordland, MO 65652

Directions: From Springfield Take Hwy 60 East 18 Miles To Iron Mtn. Rd. Turn North Across Hwy 60 Onto Iron Mnt. Rd. To Auction Watch For Signs.

Guns, Knives & Misc- 12:00PM

Rem 7400 270Win Semi * Wolf Inline 50cal Black Powder*
 Rem 740 308win * Rem 7400 243win * Charles Daly 30-06
 Masterpiece Arms MPA45 45ACP 16" Carbine * H&R 38 7.7mm
 Arisaka Rifle Type 99 w/ Bayonette * Savage Axis 308 Para GI LTC
 45ACP * Winchester Pre-64 Model 94 30-30 Colt Match Target
 HBAR 223 AR15 * Intratec Sport 22 Traditions SAA 357 Mag
 Revolver * Springfield Armory XD 45 Hopkins & Allen XL 22 *
 Iver Johnson 1900 * 22 Hornet Smith & Wesson 32 S&W * 6.8
 SPC Ammo * 22LR Ammo 357 Sig Ammo * 56-Boxes 5.45x39
 * 11-Boxes 7.62x39 50rds American Eagle 50BMG * 7-Boxes
 44 Special 32-20 Ammo * CCI 22LR * 12ga Slug and Buckshot*
 132 rounds Of Win 270 Ammo * Gun Cases * Cleaning Kits*
 Collection Of Assorted Knives*

Household, Tools & Misc

Lots Of New Items Including- Window Fan, Hose, Cooler,
 Radon Test Kits, Deck Cleaner, Skilsaw, Sprinklers, Painting
 Supplies, Cleaning Supplies, Antifreeze, Dog Treats &
 Christmas Costumes, Caulk, Sponges, Tubs, Cooking Supplies,
 B&D Trimmer, Toro Gutter Cleaner, Towel Bars, Ceiling Paint,
 Paint & Primer, Light Bulbs, LED Candles, Wire Rope Clips,
 Spring Links, Window Candles, Air Filters, Repair Links, Gutter
 Pieces & Downspouts, Smooth Blend Mixer/ Dispensers,
 Shelf Brackets, Craftsman Tool Organizers, Christmas Tree
 Toppers & Floor Organizers, Christmas Lights & Decor, Multi
 Tools, Catnip, Brooms & Dustpans, Sink Caddys, Rubber Muck
 Boots, Candles, Plastic Tubs, Etc Harmony Electric Guitar- NIB
 * Stanley Toolbox * Pictures Black & Decker Convection Oven *
 Misc Home Decor More New Items Arriving Daily

**Coins, Jewelry & Misc-
 12:00PM**

Lincoln Wheat Back Cents Including 1909S VDB 1914D* 1962
 Proof Set * 1963 Mint Set * 100+ Silver Mercury Dime* 100+
 Silver Roosevelt Dimes * Indian Head Cents* Shield Nickels
 * Buffalo & V Nickels * Jefferson Silver Nickels* 1910 and
 1910-D \$10 Gold Eagles * 2-10oz Silver Bars* 2-1986 \$10
 1/4oz Fine Gold * 10- 1/10oz \$5 Gold Eagles* 1884 Carson
 City Morgan Silver Dollar* Silver Peace Dollars* 20+ Morgan
 Silver Dollars * Silver American Eagles* Gold Necklaces *
 50-America The Beautiful 5oz Silver Coins* Proof & Mint
 Sets * 350oz Canadian 9999 Silver Coins* Several Mens Gold
 Rings * Quartz Pocket Watch* Kennedy 90% and 40% Silver
 Half Dollars * Gold Rings* Barber Silver Half Dollars * Walking
 Liberty Silver Half Dollars* Eisenhower Silver Proof Dollar *
 Nazi German Coins Foreign Silver Coins Mexico, Great Britain,
 Australia* Large Assortment Of Sterling Flatware* Plus Much
 More!!!

**Antiques, Collectibles,
 Furniture & Appliances**

Bernina Artista 730E Sewing & Embroidery Machine * TV
 Stand Side By Side Refrigerators * Hall Tree * Hope Chest *
 Cards* Large Collection Of Cast Iron Skillets * Bobcat Wall
 Mount* 6' Folding Tables * 2 Ethan Allen End Tables * Lighted
 Cabinet



**PLUS MORE
 ARRIVING DAILY!
 WWW.GLENWORTH.COM**

Auction Conducted by:

Glenworth

**Auction Service & Realty
 Glen Yutzy, Auctioneer/Broker**



Licensed in Missouri & Arkansas

**Phone: (417) 767-4345
 Fax: (417) 767-4222**

Not responsible for accidents. Announcements made day of sale take precedence over any printed matter
 Terms: CASH or CHECK Visit our website for more information at www.glenworth.com

Lunch available

Your Plans. Our Products. Quality Result!



LIMITED LIFETIME PAINT WARRANTY

Ask About Our Quick Service.
Over **20** Colors and Several Styles To Choose!

24x40x10 • 24x32x10 • 30x40x10 • 30x40x12 • 40x60x12

All Buildings Quoted Have #2 Lumber And #1 Galvalume Or Limited Lifetime Painted Metal

All Buildings Are Heavy 29 Ga. Metal, Three 2"x6" T&G Splashboards, All Poles 5"x5" Or Larger, CCA Treated, Fully Trimmed With One 3'x6' Walk-Through Door & One Large Sliding Door.

Plus Tax. Labor & Delivery Available On All Building Packages. Prices may vary due to local code restrictions.

Metal Roofs Designed To Look Great On Your Home!

DELUXE BUILDING PACKAGES AVAILABLE CALL TODAY TO GET YOUR QUOTE!

877-556-8855



Good quality, quick service

NEXT BUSINESS DAY SERVICE
Call for details.

HEAVY 29 Ga. METAL # 1

Limited LIFETIME WARRANTY

29 Ga. & 26 Ga. Painted

CUT TO LENGTH PANELS

GALVALUME METAL UNPAINTED 25 YEAR WARRANTY

#1 Standard Panels, 29 Ga.

\$48.95

BYLER BUILDING SUPPLY, LLC

2 1/2 MILES EAST OF SEYMOUR ON 60, 1/4 MILE NORTH AT AUTO SALVAGE WWW.BYLERSUPPLY.COM

877-556-8855 MON.-FRI. 7:30-5 SAT. 8-12 FAX NO. 417-935-2995 417-771-3100

VISIT US AT WWW.BYLERSUPPLY.COM



ONLINE ONLY AUCTION

**Cannon Smoke Saloon and The Stables Event Center
23 Spring Cove Road • Sunrise Beach Missouri
Selling over 700 lots of quality restaurant equipment and decor**

Bidding now open @ [sellersauctionservice.hibid.com](https://www.sellersauctionservice.com)

Auction Begins closing Friday, December 18th @ 7PM

Items can be previewed Saturday, December 12th 10-3



Victory 2 station keg cooler



Outside Walkin Refrigerator and Freezer



Outside Walkin Freezer



Southern Pride XLR 1400 gas fired commercial smoker



True model 72 3 door Refrigerator



True model 72F 3 door freezer



Mechanical Bull



Life size fiberglass horses



Larkin 20ft hood with fire suppression and blowers



Hotel Front



Lifetime commercial tables & chairs

For more information contact auction company @ 5734804400

Sellers Auction Service
"We Were Born Sellers"

Complete Auction Service

www.sellersauctionservice.com

Terms: Cash or Check with proper I.D. Not responsible for accidents or losses. Items will be sold As Is/Where Is with No Guarantees. Nothing to be removed until paid for. Refreshments available. Announcements made on sale day take precedence over any printed materials.



GREGG SELLERS, AUCTIONEER
573-480-4400

\$2,500 - \$11,000 LOT

Lindsay Chevrolet & Lindsay Ford

417-588-7995

Bryan Sien, Manager • Aaron Wehner, Finance • Larry Davis, Ed Compton & James Skidmore, Sales

Mon.-Fri. 8 am - 7 pm
Sat. 8 am - 5 pm
Not responsible for typos.
* with approved credit

West City Route 66
& South Monroe
Lebanon, MO

CARS

LC29259A	2009 CHEVROLET IMPALA LT GRAY, 3.5L, V6, AUTO, FWD, 166,000 MILES	\$5,900
QC76031A	2008 ACURA TL WHITE, 3.2L, V6, AUTO, FWD, TAN LEATHER, DUAL P/W, H/SEATS, SUNROOF, PREMIUM STEREO, 110,000 MILES	\$8,900
QC76047	2013 BUICK REGAL 4D BLACK, 2.0L, 4CYL, T/C, ALLOY WHEELS, H/LEATHER, R/START, SUNROOF, 114,000 MILES.....	\$9,900
QC76070	1995 BUICK RIVIERA 2D WHITE, 3.8L, V6, SUPERCHARGED, FWD, RED LEATHER, PREMIUM SOUND, SUNROOF, 135,000 MILES.....	\$4,200
LC29012	2019 CHEVROLET SPARK LS HATCHBACK WHITE, 1.4L, 4CYL, AUTO, FWD, 26,000 MILES	\$9,800
QC75986	2016 CHEVROLET CRUZE LS BLUE, 1.4L, T/C, AUTO, FWD, 113,000 MILES	\$8,800
QC76027	2014 CHEVROLET MALIBU LT GOLD, 2.5L, SUTO, FWD, BLACK CLOTH, REMOTE START, REAR CAMERA, 155,000 MILES	\$8,900
LC29382	2016 CHEVROLET CRUZE LT 4D RED, 1.4L, T/C, AUTO, FWD, 75,000 MILES	\$10,500
LC29375	2013 CHEVROLET MALIBU LTZ 4D PEARL WHITE, 2.5L, 4CYL, AUTO, 86,000 MILES.....	\$10,600
LC29374	2014 CHEVROLET CRUZE LS GOLD, 1.8L, AUTO, FWD, BLACK CLOTH, 66,000 MILES.....	\$9,900
LC7719A	2014 CHEVROLET CRUZE LT BLACK, 1.4L, T/C AUTO, CLOTH, 63,000 MILES	\$8,900
LC26953	2016 CHEVROLET MALIBU LT MAROON, 2.5L, BLACK CLOTH, ALLOY WHEELS, 84,000 MILES	\$11,500
LC29281A	2014 CHEVROLET IMPALA LTZ MAROON, 3.6L, V6, FWD, GRAY LEATHER, H/SEATS, R/START, SUNROOF, 65,000 MILES	\$11,500
LC29220A	2017 CHEVROLET CRUZE LT BLACK, 1.4L, T/C AUTO, CLOTH, ALLOY WHEELS, SAT RADIO, R/CAMERA, 64,000 MILES	\$10,800
LC7543A	2020 CHEVROLET SPARK LS HATCHBACK RED, 1.4L, AUTO, FWD, LOCAL TRADE, 2,000 MILES	\$12,400
LC29289A	2013 CHRYSLER 200 LIMITED BLACK, 3.6L, V6, AUTO, FWD, 102,000 MILES	\$8,500
LC29328A	2014 CHRYSLER 200 LX MAROON, 2.4L, 4CYL, AUTO, FWD, 125,000 MILES	\$6,900
LC29417	2015 CHRYSLER LIMITED 200 RED, 2.4L, CLOTH, REMOTE ENTRY, R/CAMERA, 109,000 MILES.....	\$9,500
QC76074	2014 DODGE AVENGER SXT BLACK, CLOTH, ALLOY WHEELS, P/W DRIVER SEAT, 102,000 MILES	\$8,900
QC75938	2016 FORD FOCUS SE MAROON, 2.0L, 4CYL, AUTO, FWD, 98,000 MILES.....	\$7,800
LC29285A	2011 FORD TAURUS SEL BLACK, 3.5L, V6, FWD, ALLOY WHEELS, LEATHER, 137,000 MILES	\$6,700
QC76022	2012 FORD FIESTA SE GRAY, 1.6L, FWD, 84,000 MILES	\$5,800
LC7822B	2011 FORD FOCUS SE SILVER, 2.0L, AUTO, FWD, BLACK CLOTH	\$4,800
QC76040	2012 FORD FOCUS SE H/B YELLOW, 2.0L, AUTO, FWD, BLACK INTERIOR, ALLOY WHEELS, SUNROOF, 105,000 MILES.....	\$6,900
LC29280A	2014 FORD FOCUS SE BLUE, 2.0L, AUTO, HEATED CLOTH SEATS, R/START, ALLOY WHEELS, 119,000 MILES	\$6,900
LC29408	2018 FORD FIESTA S SILVER, 1.6L, FWD, REMOTE ENTRY, R/CAMERA, SAT/RADIO, 14,000 MILES	\$10,900
QC57960D	2014 FORD TAURUS SEL WHITE, 3.5L, V6, FWD, H/LEATHER, NAVIGATION, R/START, R/CAMERA, 93,000 MILES.....	\$11,900
QC76012	HYUNDAI SONATA SE BURGANDY, 2.4L, 4CYL, AUTO, 133,000 MILES	\$7,900
QC76073	2012 HYUNDAI VELOSTER 3D BLACK, 1.6L, AUTO, FWD, ALLOY WHEELS, CLOTH, 90,000 MILES	\$7,900
QC75965A	2013 KIA FORTE EX H/B BLACK, 2.0L, CLOTH, LOCAL TRADE, 112,000 MILES	\$6,500
QC76025	2011 MAZDA 3 S SPORT H/B RED, 2.5L, AUTO, FWD, ALLOY WHEELS, SUNROOF, 80,000 MILES.....	\$8,900
QC76011	2010 MERCURY MILAN PREMIER GRAY, 3.0L, V6, AUTO, FWD, 89,000 MILES, LEATHER, LOADED.....	\$7,700

QC76053	2014 MITSUBISHI ES H/B SILVER, 1.2L, AUTO, FWD, CLOTH, ALLOY WHEELS, 116,000 MILES.....	\$6,900
LC29373	2019 NISSAN VERSA S BLACK, 1.6L, 5SP, MANUAL, 16,000 MILES	\$11,500
LC29419	2017 NISSAN SENTRA SV SILVER, 1.8L, AUTO, CLOTH, R/ENTRY, R/CAMERA, 74,000 MILES	\$11,800

TRUCKS

QT76028	2010 CHEVROLET SILVERADO W/T GRAY, 4.3L, V6, AUTO, 2WD, LONG BED, ALLOY WHEELS, BED LINER, TOW, 122,000 MILES.....	\$10,900
QT76049	2007 CHEVROLET SILVERADO 1500 LTZ EXT CAB RED, 5.3L, V8, 4X4, LEATHER, ALLOY WHEELS, LIFT KIT, TOW, BED LINER, 157,000 MILES	\$12,900
QT76050	2006 CHEVROLET SILVERADO 1500 LT EXT CAB GRAY, 5.3L, V8, AUTO, 4WD, HEATED LEATHER, SUNROOF, TOW, ALLOY WHEELS, 162,000 MILES	\$11,900
QT76075	2008 CHEVROLET SILVERADO 1500 W/T SHORT BED WHITE, 4.3L, V6, AUTO, 4X4, ALLOY WHEELS, CLOTH SEAT, RUBBER FLOOR, BEDLINER, TOW, RUNNING BOARDS	\$11,500
QT76036	2007 DODGE RAM ST 1500 SHORT BED SILVER, 3.7L, V6, MANUAL TRANS, 2WD, 20" ALLOY WHEELS, TOW	\$8,500
LT29303A	2007 DODGE RAM ST 1500 SHORT BED MAROON, 3.7L, V6, 6SPD, MANUAL, RWD, GRAY CLOTH, R/ENTRY, TOW, NEW TIRES, 129,000 MILES, LOCAL TRADE	\$8,500
QT75972A	2004 FORD EXPLORER SPORT TRAC XLT TAN, 4.0L, V6, AUTO, 4WD, ALLOY WHEELS.....	\$6,900
QT76064	2007 FORD F150 STX SUPERCAB BLACK, 4.6L, V8, AUTO, 2WD, ALLOY WHEELS, RUNNING BOARDS, TOW, 137,000 MILES	\$8,500
QT76054	2002 GMC 1500 EXT CAB SL RED, 5.3L, V8, 4X4, GRAY CLOTH, ALLOY WHEELS, TOW, 157,000 MILES	\$9,900

SUVS

LT29344B	2015 CHEVROLET EQUINOX LT WHITE, 2.4L, FWD, ALLOY WHEELS, NEW TIRES, BLACK CLOTH, R/START, R/CAMERA, 117,000 MILES	\$10,900
QT58140B2	2013 CHEVROLET EQUINOX LT WHITE, 2.4L, FWD, GRAY/BLACK HEATED LEATHER, DUAL P/W SEATS, R/START, R/CAMERA, 101,000 MILES	\$9,900
LT29307	2006 CHEVROLET HHR SILVER, 2.2L, 4CYL, MANUAL, 72,000 MILES	\$6,500
QT57859B	2005 CHEVROLET TRAILBLAZER LT GOLD, 4.2L, AUTO, 4X4, TAN CLOTH, P/W, P/L, R/ENTRY, 168,000 MILES, LOCAL TRADE	CALL!
QT57817A	2011 CHEVROLET TRAVERSE LS SILVER, 3.6L, V6, AUTO, FWD, 135,000 MILES, THIRD ROW SEATS	\$7,500
LT29423A	2015 CHEVROLET TRAVERSE LT SILVER, 3.6L, V6, AUTO, FWD, HEATED CLOTH SEATS, R/CAMERA, R/START, 3RD ROW SEAT, LOCAL TRADE	\$11,900
LT29317	2014 FORD ESCAPE TITANIUM DEEP IMPACT BLUE, 1.6L, ECOBOOST, AUTO, FWD, LEATHER, XM RADIO, 1102,000 MILES	\$12,900
QT76029	2014 FORD EXPLORER BASE SILVER, 3.5L, V6, AUTO, 4WD, THIRD ROW SEAT, TOW, 157,000 MILES.....	\$12,500
QT76044A	2012 GMC ACADIA DENALI WHITE, 3.6L, AWD, H/C LEATHER, DVD, BOSE STEREO, R/START, R/CAMERA, SUNROOF, LOADED, 116,000 MILES, LOCAL TRADE	\$12,900
QT76090	2011 GMC ACADIA SLT GRAY, 3.6L, AWD, H/LEATHER, R/CAPTIN SEATS, R/START, P/LIFTGATE, 126,000 MILES.....	\$9,500
QT75889	2010 GMC TERRAIN SLT BURGANDY, 2.4L, 4CYL, AUTO, FWD, ALLOY WHEELS, LEATHER, HEATED SEATS, R/CAMERA, SUNROOF, 88,000 MILES	\$8,800
QT58065B2	2012 JEEP PATRIOT SPORT WHITE, 3.7L, V6, AUTO, 4WD, ALLOY WHEELS, CLOTH, 105,000 MILES	\$11,900
QT58154A	2006 JEEP CHEROKEE LIMITED GOLD, 5.7L, HEMI, AUTO, 4X4, LEATHER, SUNROOF, NAV, TOW, 166,000 MILES	\$7,500
LT29362A	2016 JEEP COMPASS SPORT BLACK, 2.4L, 4CYL, AUTO, 4X4, ALLOY WHEELS, 142,000 MILES	\$9,500
QT76072	2012 JEEP LIBERTY ARTICAT GRAY, 3.7L, V6, AUTO, 4WD, H/CLOTH SEATS, 115,000 MILES.....	\$11,900
QT76005	2011 KIA SOUL HATCHBACK RED, 2.0L, 4CYL, AUTO, FWD, 126,000 MILES.....	\$7,700

Salem Livestock Auction
 Hwy. 32 Salem, MO • 573-729-8880
 Over 40 Years in the Livestock Business

Stock Cow Sale
 Saturday, December 19th @ 1pm

35 Black Cows 3-5 yrs, 2nd & 3rd stage bred to Black Bull
 52 Mix Cows (Mostly Blk) 3-5 yrs, 2nd & 3rd stage bred to Black or Hereford Bull
 33 Mix Cows (Mostly Blk) 3-5 yrs, 5 w/ Calves, Bal 2nd & 3rd stage bred to Angus Bull - SELL OUT
 13 Black Cows running ages, 2nd & 3rd stage bred to Black Bull, Home Raised - SELL OUT
 1 Black Bull
 28 Black Cows 3-6 yrs, 3rd stage, bred to Black or Hereford Bull - Journagan
 1 Horned Hereford Bull 3yrs
 20 Mix Cows, running ages, 511 w/ 200 lb. Calves, Bal 2nd stage
 25 Mix Cows, running ages, 3 w/ Calves, Bal 2nd & 3rd stage

MERRY CHRISTMAS AND A HAPPY YEAR!
 No Sale Dec. 21st & 28th - 1st Sale of the Year Jan. 4th
 PRE VAC - Friday Jan. 8th @ 12:00 PM
 Goat Hog & Sheep Sale - Tuesday Jan. 12th @ 6:00 PM
 Stock Cow Sale - Saturday Jan. 16th @ 1:00 PM

All Consignments Welcome Up Until Sale
 Allen Thompson Renee Lauderdale
 417-932-4097 417-926-2682
 Chuck Thompson Brandon Barton
 417-257-5610 417-259-1597
 Terms of Sale: Cash or Approved Check!



LEWIS WELDING AND REPAIR: Hay bale feeders with bale basket, corral panels, custom or built to order Ag implements, trailers, feeders. Call for pricing, 573-729-0272, Salem.

1965 FORD 1 TON FLATBED TRUCK: runs well. \$3,000, 573-729-0272, Salem.

WANTED TO BUY ANTIQUE CARS: Convertible, Corvettes, unrestored, motors, parts considered. 870-324-1154.

DP BRUSHCUTTER : (older), 8HP engine w/mower deck, runs good. \$350. 417-543-5375.

FORD 6600 DIESEL TRACTOR: Cab, new loader, \$7,750. 573-765-4406.

I BUY.....used mobile homes. Call or text 573-338-6250 or email GregS.CDH@outlook.com

ROME 8FT OFFSET DISK: \$3,750. 573-765-4406.

2020 KC CHIEFS MCDONALDS RED FRIDAY SUPERBOWL CHAMPS FLAGS: unopened, NIP \$15/each. Salem, 573-854-8132.

!AUCTION TIME!

BY ORDER OF THE UNITED STATES
 BANKRUPTCY COURT

FRIDAY, DECEMBER 11 @ 12 NOON

Location: 4533 STATE HIGHWAY J • MARSHFIELD, MO

I AM SELLING THESE TWO SHARP VEHICLES AND THIS IS ALL I'M SELLING. SO YOU'RE LOOKING AT A 10 MINUTE AUCTION!!!
YOU'LL WANT TO BE ON TIME.



2019 KIA SPORTAGE FE
 ONLY 32,120 MILES
 THIS CAR IS IN BEAUTIFUL CONDITION, NEAT AS A PIN



2014 MERCEDES C250
 ONLY 52,320 MILES
 THIS CAR IS ALSO IN EXCELLENT CONDITION

FEE FREE TO GIVE ME A CALL AND COME OUT TO TAKE A LOOK BEFORE THE AUCTION!

Terms: Cash or check day of auction. Check will be made out to **FRED MOON** - Federal Bankruptcy Trustee. IF PAYING BY CHECK THE CAR CAN BE HELD UNTIL YOUR CHECK CLEARS.

Freeman Auctions & Appraisals, LLC
 Auctioneer: Steve Freeman (417)343-1891
 Find us on Facebook @ Steve Freeman Auctions & Appraisals

DOYLE STAINLESS STEEL FERTILIZER BED: 15ft, Stainless catwalks, radar, one-owner, works good. \$6,500. 417-543-5674.

WANTED 16.9X34 REAR TRACTOR TIRE: good condition, 75%+ tread. Union, 636-234-5269.

CAMPER WINDOWS: (2) 29 3/4 X 21 3/4, (1) 23 3/4 X 21 3/4, (1) 34 X 3/4, (1) 47 3/4 X 21 3/4. \$200 FOR ALL. 417-664-8823.

AB ROLLER-SLIDER: Deluxe, stomach exercise machine, heavy duty, real 6 pack

builder, detachable handles, for easy storage. \$60. Ava. 417-686-0032.

ANTIQUA RITTER DENTAL DRILL: Works. \$350. 417-543-5375.

KRONE HEAVY DUTY 4 BASKET TEDDER: \$4,950. 573-765-4406.

DARDEN PROFESSIONAL TIMBER HARVESTING, BUYING STANDING TIMBER: Great prices, improve wildlife habitat and improve forest health. State Certified & Fully Insured! 573-247-4808 or 573-739-1122. Salem

BUFFALO LIVESTOCK MARKET LLC



276 Hwy 32 West
Buffalo, Missouri

Dec. 5th, 2020

Receipts: 1964 Head

**Feeders steady to \$4 higher;
Cows \$2 higher.**

Representative Steers

- 300-400 @ 155.00 to 177.00
- 400-500 @ 145.00 to 173.00
- 500-600 @ 140.00 to 162.50
- 600-700 @ 125.00 to 139.00
- 700-800 @ 127.00 to 133.50
- 800-900 @ 123.00 to 130.50

Representative Heifers

- 300-400 @ 130.00 to 151.00
- 400-500 @ 130.00 to 147.00
- 500-600 @ 123.00 to 139.50
- 600-700 @ 122.00 to 137.00
- 700-800 @ 115.00 to 125.00
- 800-900 @ 90.00 to 122.00

Feeder Bulls

- 400-500 @ 130.00 to 150.00
- 500-600 @ 125.00 to 147.00
- 600-700 @ 105.00 to 125.00
- 700-800 @ 107.00 to 119.00
- 800-900 @ 83.00 to 85.00

Bred Cows

\$750 to \$1175 per head

Slaughter Cows

- Big Fleshy 57.00 to 61.50
- Med Flesh 47.00 to 55.00
- Thin Flesh 40.00 to 50.50
- Small Carcass X Thin

Bulls

- High Dressing 87.00 to 90.00
- Med Dressing 80.00 to 85.00
- Low Dressing 70.00 to 78.00

DECEMBER SALES SCHEDULE

Sat. Dec. 12 - PreVac, Regular
Tues. Dec. 15 - Cow • Sat. Dec. 19 - Regular

MON-WED MARKET REPORT

Listen to KJEL 103.7FM • Lebanon or KY00 99FM • Bolivar

VIEW OUR SALES AT CATTLEUSA.COM

CALL FOR TRUCKING OR ON-FARM VISIT

Lyle Caselman • Owner-Manager
417-345-7876 • mobile 417-533-2944
Leon Caselman • Owner
417-345-4514 • mobile • 417-588-6185
Howard Miller • Owner 417-345-8122

LAND AUCTION

CALLAWAY COUNTY, MO



88+/- Acres Offered In Tracts & The Entirety

4 Miles West Of New Bloomfield or
10 Miles East of Ashland.

Tract 1: 30 +/- Acres:

Approx. 18 Ac. Tillable

Tract 2: 58 +/- Acres:

Approx. 24 Ac. Tillable

Note: This property has numerous beautiful home building sites and lots of timber for wildlife enthusiast. Your opportunity to own land is now!!

Sells To High Bidder, No Reserve or Minimum!!

County Road 375, New Bloomfield, MO

Online Bidding Ends: Thursday, December 17th at 12:30 PM

CHECK IT OUT AT Atterberrysells.com

Atterberry Auction & Realty Company
Your Real Estate At Auction Specialists
Email: contactus@atterberryauction.com



POOL TABLES: Installations, moves, recoveries, repairs, accessories, etc. 573-646-1700.

AMMUNITION: .223, 9mm, .45cal, bulk or box. 417-257-8385, pick-up or shipping available. www.cherokeeammunitions.com and on Facebook.

WEATHERED BARN WOOD SIDING: 8" & 10" wide. 573-729-7226. www.piner-idge rustic.com

500 GAL PROPANE TANK: (Older) \$300. 417-543-5375.

BUFFALO LIVESTOCK MARKET LLC



276 Hwy 32 West Buffalo, Missouri
417-345-8122

SPECIAL STOCK COW & BULL SALE

Tuesday December 15th 6:30pm

Expecting 300 to 400 Cows

Early Consignments:

Sergent. Dispersal: 73 hd. Blk & Char & Red Cows w/ 13 calves by side. 4 to 7 yrs. old.

Brownfield Herd Reduction: 30 Blk Cows. 6 yr. to SS. Bred good Bulls.

BEE Ranch: 6 hd. Blk BWF Cows w/ calves. 3 Red Cows springers. 5 Blk & BWF & Red bred Heifers, spring calvers.

Bulls: 2 Reg. Charolais Bulls. 1 1/2 old (Bradley Stock Farm)

DECEMBER SALES SCHEDULE

Sat. Dec. 12 - PreVac, Regular
Tues. Dec. 15 - Cow • Sat. Dec. 19 - Regular

533-2944 | 588-6185
Lyle Caselman | Leon Caselman

FIREARMS: Professional Repairs and Restorations. Baron's Gunsmithing. 573-363-5801, Camdenton.

REGISTERED HEREFORD & ANGUS BULLS: Home raised, Some Show-Me Select Qualified. 573-701-7828. Belgrade

MID MISSOURI STOCKYARDS

REGULAR SALE EVERY THURSDAY 11AM

SPECIAL COW SALE • DEC. 12TH • 6P.M.

For Farm Visits, Market Updates, or Trucking

Call Zach Cox 417-777-1320
Dan Romine 573-578-4939

Competitive Buyers!
Competitive Commission!
Competitive Market!

Barn: 417-532-9292
I-44 • Exit 123 "just outside of Lebanon"
17505 Route 66, Phillipsburg, MO 65722

For weekly market updates, visit us at www.midmostockyards.com

EMPLOYEE PRICING **FOR ALL**



P-15125 2019 CHRYSLER 300 TOURING
SPORTS APP, 3.6L



MSRP **\$33,030**
SALE PRICE **\$22,900**

T-15244 2020 CHRYSLER VOYAGER LX
SAFETY TEC, COLD WEATHER, 3.6L



MSRP **\$32,280**
CONS CASH **-\$750**
SALE PRICE **\$29,650**

P-15322 2020 DODGE CHALLENGER GT
BLACK TOP PACKAGE, 3.6L



MSRP **\$33,565**
CONS CASH **-\$3,050**
BONUS CASH **-\$1,000**
SALE PRICE **\$30,650**

P-15355 2020 DODGE CHARGER GT
BLACK TOP PACKAGE, SUNROOF, 3.6L



MSRP **\$35,780**
CONS CASH **-\$3,000**
BONUS CASH **-\$1,000**
SALE PRICE **\$30,800**

T-15148 2020 JEEP RENEGADE LAT 4X2
POPULAR EQUIPMENT, COLD WEATHER, 1.3L



MSRP **\$28,800**
EMPLOYEE PRICE **\$26,916**
CONS CASH **-\$1,500**
RETAIL BONUS CASH **-\$500**
BONUS CASH **-\$500**
LINDSAY DISCOUNT **-\$1,500**
CHRYSLER CAPITAL **-\$500***
SALE PRICE **\$22,416**

T-15091 2020 JEEP GLADIATOR SPORT 4X4
7.0 RADIO, TRAILER TOWING, CONVENIENCE GROUP, COLD WEATHER, ANTI SPIN AXEL, ALPINE STEREO, SIDE STEP, SPRAY IN BEDLINER



MSRP **\$47,610**
EMPLOYEE PRICE **\$43,585**
LINDSAY DISCOUNT **-\$2,000***
MIDWEST BONUS CASH **-\$1,000**
SALE PRICE **\$40,585**

T-15378 2021 JEEP CHEROKEE LATITUDE 4X4
2.4L



MSRP **\$29,550**
EMPLOYEE PRICE **\$28,092**
CONS CASH **-\$2,000**
CHRYSLER CAPITAL **-\$750***
MIDWEST BONUS CASH **-\$500***
SALE PRICE **\$24,842**

T-15309 2020 DODGE RAM 1500 BIG HORN CREW 4X4
B.H. LEVEL 2, 5.7L, ANTI SPIN AXEL, 20" ALUMINUM WHEELS, TRAILER BRAKE



MSRP **\$55,105**
EMPLOYEE PRICE **\$49,455**
CONS CASH **-\$1,000**
BONUS CASH **-\$1,500**
MIDWEST BONUS CASH **-\$1,000***
TRUCK OWNER CON **-\$1,000**
SALE PRICE **\$44,955**

T-15144 2020 JEEP GLADIATOR RUBICON 4X4
3.6L, LEATHER, TRAILER TOW, JEEP ACTIVE SAFETY GROUP, ADAPTIVE CRUISE, HARDTOP, SPRAY IN BEDLINER



MSRP **\$54,815**
BONUS CASH **-\$1,000**
SALE PRICE **\$48,700**

T-15369 2020 DODGE RAM 2500 TRADESMAN CREW 4X4
6.7 DIESEL, CROME APP, ANTISPIN AXEL, 8.4 RADIO, LEVEL 2, TRAIL BRAKE CONT, TOW MIRRORS



MSRP **\$57,730**
ON THE JOB **\$500****
COMMERCIAL TRUCK **-\$500**
RAM HD BONUS **-\$750**
SALE PRICE **\$52,250**

T-15273 2020 DODGE RAM 3500 CREW CHASSIS 4X4
CHROME APP, 6.4 GAS, FOGLEMPS, UCONNECT 3.5 RADIO, 60" CAB TO AXEL, DUALY



MSRP **\$48,995**
ON THE JOB **\$1,000****
COMMERCIAL TRUCK **-\$500**
RAM HD BONUS **-\$500**
SALE PRICE **\$43,200**

T-15363 2020 DODGE RAM 3500 TRADESMAN CREW 4X4
6.7 DIESEL, 5TH GOOSENECK PACKAGE, CHROME APP, 8.4 UCONNECT, DUALY, BLINDSPOT, SPRAY IN BEDLINER, LEVEL 2, 220 AMP ALT



MSRP **\$60,475**
ON THE JOB **\$500****
COMMERCIAL TRUCK **-\$500**
RAM HD BONUS **-\$750**
SALE PRICE **\$55,050**

Also Available \$500 Military Rebate

*MUST FINANCE WITH CHRYSLER CAPITAL ** MUST BE A NON FCA TRUCK OWNER ** MUST BE A BUSINESS OWNER, ** OFFER'S CAN NOT BE COMBINED. MUST QUALIFY. SEE DEALER FOR DETAILS. OFFER EXPIRES 01/04/21. ACTUAL PHOTOS MAY NOT BE SHOWN.



WE NEED YOUR TRADE

YEAR END CLOSE OUT! END 2020 ON A HIGH NOTE WITH LOW PRICES!

P-8334A	2017 Dodge Challenger 2D Coupe R/T 5.7L V8 SFI Hemi 50,929 mi.....	\$29,495	T-8309	2018 Jeep Renegade 4D SUV 4WD Sport 2.4L I-4 SMPI DOHC 75,476 mi.....	\$15,500
T-15345A	2017 Chrysler Pacifica Wagon Touring L Plus 3.6L V6 MPI DOHC VVT Flex 47,280 mi.....	\$24,995	P-8202A	2018 Chrysler 300 4D Sedan V6 S 3.6L V6 MPI DOHC VVT Flex 36,335 mi.....	\$25,495
P-15334A	2013 Chrysler 300 4D Sedan Base 3.6L V6 MPI DOHC VVT Flex 46,057 mi.....	\$13,495	T-15327B	2018 Hyundai Santa Fe Sport 4D SUV AWD 2.0L Base 2.0L I-4 DI DOHCT/C 41,300 mi.....	\$21,495
T-8336A	2017 Ford Edge 4D SUV AWD Titanium 2.0L I-4 DI EcoBoost 63,654 mi.....	\$22,995	T-15335A	2019 Ford F150 Supercrew 4WD 157 XLT 5.0L V8 SMPI DOHC Flex 14,274 mi.....	\$39,800
P-15329A	2017 Chrysler 300 4D Sedan Limited 3.6L V6 MPI DOHC VVT Flex 19,799 mi.....	\$21,995	T-8312A	2011 GMC Sierra 1500 Crew Cab SLE 5.3L V8 SFI Flex 141,892 mi.....	\$14,995
T-8341	2019 Dodge Grand Caravan Wagon GT 3.6L V6 MPI DOHC VVT Flex 44,722 mi.....	\$19,495	P-15307B1	2018 Toyota Camry 4D Sedan L 2.5L I-4 DI DOHC 11,584 mi.....	\$20,995
T-8342	2019 Dodge Grand Caravan Wagon SXT 3.6L V6 MPI DOHC VVT Flex 42,365 mi.....	\$18,495	P-8315	2019 Dodge Charger 4D Sedan SXT 3.6L V6 MPI DOHC VVT Flex 30,133 mi.....	\$25,500
T-8343	2019 Dodge Grand Caravan Wagon SXT 3.6L V6 MPI DOHC VVT Flex 42,204 mi.....	\$18,495	T-8316	2014 Dodge Journey 4D SUV FWD SE 2.4L I-4 SFI DOHC 107,305 mi.....	\$9,800
T-8344	2019 Ram 1500 DS Crew Cab 4WD LWB SLT 5.7L V8 SMPI Hemi 26,636 mi.....	\$31,495	T-8318	2018 Chevrolet Silverado 1500 Dbl Cab 2WD Custom 58,550 mi.....	\$27,995
T-8322	2018 Jeep Grand Cherokee 4D SUV 4WD Laredo 3.6L V6 MPI DOHC VVT Flex 21,180 mi.....	\$29,495	T-8286	2018 GMC Sierra 1500 Dbl Cab 4WD SLE 4.3L V6 DI VVT Flex 18,417 mi.....	\$29,800
T-8323	2016 Jeep Cherokee 4D SUV 4WD Sport 2.4L I-4 MPI SOHC 65,901 mi.....	\$15,995	T-8288	2018 GMC Terrain 4D SUV AWD SLE 1.5L I-4 DI DOHCT/C 30,407 mi.....	\$19,800
P-8325	2019 Chevrolet Impala 4D Sedan LT 3.6L V6 SIDI DOHC Flex 16,144 mi.....	\$23,495	P-8289	2018 Chevrolet Malibu 4D Sedan LT 1.5L I-4 DI DOHCT/C 20,318 mi.....	\$16,800
T-15353A	2015 GMC Terrain 4D SUV FWD SLE1 2.4L I-4 SIDI DOHC Flex 45,628 mi.....	\$15,995	T-8290	2020 Ram 1500 DS Crew Cab 4WD SWB SLT 5.7L V8 SMPI Hemi 8,955 mi.....	\$36,700
T-15376A1	2019 Ram 1500 Crew Cab 4WD SWB Limited 5.7L V8 SMPI Hemi 12,000 mi.....	\$52,495	P-8292	2017 Chevrolet Cruze 4D Sedan LT 1.4L I-4 DI DOHCT/C 28,458 mi.....	\$13,900
P-15376A2	2016 Dodge Challenger 2D Coupe SRT Hellcat 6.2L V8 SFI S/C SRT Hemi 11,000 mi.....	\$49,995	T-8232A	2017 Hyundai Santa Fe Sport 4D SUV AWD 2.4L Base 2.4L I-4 DI DOHC 92,594 mi.....	\$13,900
T-8329	2017 Ford Edge 4D SUV AWD SEL 3.5L V6 SMPI Ti-VCT 47,655 mi.....	\$19,495	T-15332A	2016 Hyundai Santa Fe 4D SUV FWD SE 3.6L V6 DI DOHC 79,281 mi.....	\$14,995
P-15370A	2017 Ford Focus 4D Sedan SEL 2.0L I-4 DI DOHC Flex 38,633 mi.....	\$14,495	P-8303	2018 Chevrolet Cruze 4D Sedan at LT 1.4L I-4 DI DOHCT/C 17,857 mi.....	\$15,995
T-8331	2019 Ram 1500 Crew Cab 4WD SWB Big Horn 5.7L V8 SMPI Hemi 24,133 mi.....	\$39,995	P-8305	2019 Dodge Charger 4D Sedan SXT 3.6L V6 MPI DOHC VVT Flex 32,240 mi.....	\$25,000
T-8297B	2017 Dodge Journey 4D SUV AWD Crossroad 3.6L V6 MPI DOHC VVT Flex 45,781 mi.....	\$20,995	T-8306	2018 Jeep Renegade 4D SUV 4WD Sport 2.4L I-4 SMPI DOHC 50,276 mi.....	\$15,800
T-8300A	2016 Chevrolet Traverse 4D SUV FWD LT 3.6L V6 DI DOHC 64,410 mi.....	\$17,995	T-8307	2019 Jeep Renegade 4D SUV FWD Sport 2.4L I-4 SMPI DOHC 29,403 mi.....	\$18,500
T-8354	2019 Ram 1500 DS Crew Cab 4WD SWB Tradesman 5.7L V8 SMPI Hemi 5,957 mi.....	\$31,995			
T-15280B	2018 Mazda CX-5 4D SUV AWD Grand Touring 2.5L I-4 DI DOHC 51,594 mi.....	\$22,995			
T-15352B	2018 Dodge Grand Caravan Wagon GT 3.6L V6 MPI DOHC VVT Flex 52,125 mi.....	\$17,495			
T-15403A	2020 Ford Edge 4D SUV AWD SEL 2.0L I-4 DI EcoBoost 6724 mi.....	\$29,495			
T-8349	2018 Chevrolet Equinox 4D SUV FWD 1.5T LT 1.5L I-4 DI DOHCT/C 24,191 mi.....	\$17,495			
T-8350	2018 Chevrolet Silverado 1500 Dbl Cab 4WD LT 5.3L V8 DI VVT Flex 21,440 mi.....	\$32,495			
T-8351	2019 Chevrolet Equinox 4D SUV FWD 1.5T LT 1.5L I-4 DI DOHCT/C 15,626 mi.....	\$18,995			
T-8321	2017 Ram 1500 Crew Cab 4WD SLT 5.7L V8 SMPI Hemi 34,552 mi.....	\$33,995			
T-8169A	2017 GMC Acadia 4D SUV FWD SLE2 2.5L I-4 DI DOHC VVT Flex 66,735 mi.....	\$17,800			
T-8284	2018 Chevrolet Equinox 4D SUV FWD 1.5T LT 1.5L I-4 DI DOHCT/C 20,179 mi.....	\$17,500			
T-15312C	2010 Jeep Wrangler 4D Utility 4WD Unlimited Sport 3.8L V6 SFI 109,730 mi.....	\$18,995			
T-8308	2017 Chrysler Pacifica Wagon Touring L 3.6L V6 MPI DOHC VVT Flex 39,230 mi.....	\$20,800			

MANAGER SPECIALS

ALL REASONABLE OFFERS WILL BE CONSIDERED

T-15212A	2017 Kia Sorento 4D SUV AWD SX 3.3L V6 DI DOHC 54482.....	\$21,500
T-15216B2	2011 Harley Davidson FXDF-FAT MOTORCYCLE 9700.....	\$7,000
P-8272	2019 Chevrolet Malibu 4D Sedan LT 1.5L I-4 DI DOHCT/C 42794.....	\$16,900
T-15155A	2018 Chrysler Pacifica Wagon Limited 3.6L V6 MPI DOHC VVT Flex 68881.....	\$24,500
T-15294A	2019 Ford Escape 4D SUV 4WD SEL 1.5L I-4 DI DOHC EcoBoost 14000.....	\$19,900
T-8261B	2017 Ford Escape 4D SUV 4WD SE 2.0L I-4 DI DOHC EcoBoost 62533.....	\$15,800
P-8280	2019 Dodge Charger 4D Sedan SXT 3.6L V6 MPI DOHC VVT Flex 33560.....	\$25,000
P-8281	2019 Dodge Charger 4D Sedan SXT 3.6L V6 MPI DOHC VVT Flex 31209.....	\$25,000

LINDSAY CHRYSLER/DODGE PREOWNED 573-336-2698

809 MISSOURI AVE., ST. ROBERT, MO • OPEN 8 A.M. - 6:30 P.M. MON.-FRI. & • SAT. - 9 A.M. - 5 P.M.

LINDSAY CHRYSLER/DODGE PRE-OWNED IN ST. ROBERT

WWW.LINDSAYCHRYSLERDODGE.COM



Wright Spray Foam Insulators, LLC
Commercial & Residential
Call for FREE Estimates!

Ervin Gingerich
417-926-2052
B. Eli Yoder
417-746-4932

BORDER COLLIE: Puppies, first shots, dewormed, ready Now or Christmas, \$125, Call mornings. 573-759-2347.

WANTED, TIMBER TO LOG ON SHARES: Honest, reliable, references. 417-533-4607, 417-664-1195.

LOG SIDING SALE: 2X8 Western Cedar .99 ft/ Pine \$1.30 ft while supplies last. www.pinerider rustic.com 573-729-7226.

EARN \$60,000/YR: Part-Time in the Live-stock of Farm Equipment Appraisal Business. Agricultural background required. Home Study Course available. 800-488-7570 or www.amagappraisers.com

PYRENEES/ANATOLIAN PUPPIES: par-ents are excellent sheep/guard dogs. \$250. 417-322-0161.

TUFFY SPECIAL -Volume Prices 573-657-2176 amegamobilehomes.com

BUYING PRE 1960 BEER SIGNS: FALSTAFF, LEMP, BUDWEISER, CAPI-TOL, HAMMS, STAG, ANYTHING. 573-680-5377.

BEEFALO WEANING AGE: Registered Purebred Beefalo Bulls, Black Red show qual-ity. \$1,100. Circle Z Beefalo, Bourbon, 573-732-5763

8 GALLON AUTO LUBRICATED AIR COMPRESSOR: New, \$80. 417-457-1023. Raymondville.

SACAGAWEA GOLDEN DOLLARS: Face value \$1. Original issue 2000, uncirculated. In rolls of 5. \$30. 417-686-0032, Ava.

WINCHESTER 150: round, steel, shellcase, 9mm, ammo \$50 per box. 417-844-4319.

CHRISTMAS PUPPIES BLUE & RED HEELER PUPPIES: Good working stock, UTD. 417-664-5926.

TAYLOR TRUCKS & EQUIPMENT
417-924-2026 • 2676 Hwy. 5
Mansfield, MO

DANUSER DEALER
Intimidator Tree Puller
T3 Post Driver & Other Attachments
New Mowers! Bush-Whacker, Big Bee
Storage Containers & Dry Vans - 20' - 53'
Farm Tires, PTO's & Parts for Rotary Mowers,
Farm Tractor Implements, Bush-Whacker
HD, Skidsteer Brush Cutter, Plows, Used 15"
Bush-Whacker Now In Stock, Discs, and More
Skidsteer Attachments: Pallet Forks, Buckets,
Grapples, Hay Spears & Tree Sheers - RR Ties

**Bush-Whacker
Heavy Duty Rotary Cutter**



TRAILER PARTS & REPAIR | NEW SEMI TIRES-
DRIVE & STEER

We invite you To Come By & Look Us Over!
Located 2.5 Miles North Of
Mansfield, MO On Hwy 5

CUSTOM SAW MILLING: Lebanon. 417-533-4607, 417-664-1195.

NEW TUBE GRILL FOR 73'-86' SQUARE BODY CHEVY TRUCK: \$50 or trade. 573-734-2822.

BB & PELLET RIFLE. \$75 each. 573-327-9068.

THE FIRST 100 YEARS OF SOUTH-WEST MISSOURI STATE UNIVERSITY: in Springfield. Hardbook, \$12.50. 417-532-2045, Lebanon. leave phone number.

SOUTHERN MISSOURI TIMBER

Standing Timber & Log
Purchasing & Harvesting



WALNUT, WHITE OAK & ALL OTHER SPECIES

417-473-0022

TRUSTED & THOROUGH SERVICE

Repairs • Rebuilds
Cast Iron & Steel Welding
Engines • Transmissions
Electrical • Hydraulics
PTO & Drivelines

VALLEY SHOP • 660-458-6747
38745 Molasses Mill Rd, Latham

ONAN POWERED 3-PHASE GENERATOR: 5,000 Watts. \$350. 417-543-5375.

JOHN DEERE 6400: Diesel, Cab & Air Tractor, 4 wheel drive, 85 hp. \$22,000. 573-765-4406.

2020 KC CHIEFS SUPERBOWL COCA COLA CANS: unopened, mint condition. \$15/6pack. Salem, 573-854-8132.

2019/2020 4x5 ROUND BALES: plastic twine, always shedded, pay for now and will store until April. Delivery or pickup. St James, MO. 573-467-5043 or 573-699-4577.

FIRESTONE MINI SPARE TIRE: Brand new, never used, 23" diameter, 5 hole, T125-70-R16, tubeless radial. \$85 firm. 417-686-0032. Ava

2 ASHLEY SOFAS AND LOVESEATS: 1-Leather, 1-cloth, 2 Hard Rock Maple end tables, Baldwin Electric organ, all in excellent condition. 573-765-3603.

ANDERSON PTO DIESEL ROCK PICKER: \$2,750. 573-765-4406.

ASHLEY PELLET STOVE: \$650OBO, Pipe included. 573-674-3830.

BELL #60 BASIC MILL FOR GRAIN: \$350. 417-543-5375.

TAKEUH DIESEL EXCAVATOR: with Hyd Tumb \$14,000. 573-765-4406.

QUALITY, FULL FACE PLASTIC SHIELDS: protective masks, reusable, brand new, direct splash protection, transparent, comfortable, 5 masks, \$20. Ava. 417-686-0032.

NOW IS THE TIME TO BUY!



1023E:
\$1,750 off*



3033R:
\$2,500 off*



4066M:
\$3,000 off*



5075E:
\$4,500 off*

MORE REASONS TO BUY NOW!

No Payments
for 90 Days**

A **FREE** HeritageGuard
Maintenance

Flexible
Delivery

A DREAM TEAM LINE UP



17G COMPACT EXCAVATOR

0% Interest
for **48 Months****



317G COMPACT TRACK LOADER



Heritage
TRACTOR

Find a location near you at HeritageTractor.com

*Discounts vary by model. Availability varies by location. Offer ends 12/31/2020. Restrictions may apply, see dealer for details. Taxes, freight, set up and delivery charges could increase the payment.

**Financing rate based upon approved credit through John Deere Financial and is valid until 12/31/2020.

BIRDS OF MISSOURI FIELD GUIDE, \$4.00. IDENTIFICATION BIRDS OF NORTH AMERICA BOOK, \$4.00. 417-532-2045, Lebanon. Leave message.

ANTIQUE SINGER MODEL #G9292216: \$120. 417-543-5375.

14" TIRES, different sizes call for price. 573-674-3830.

A CENTURY OF MISSOURI TIGERS BASKETBALL BOOK: by Michael Atchison, 258 pages, hardback. \$20. 417-532-2045. Lebanon. Leave message.

SPECIALIZING IN STUD FRAME & POLE BARN BUILDINGS

30+ Years Experience

Broeckelman Metal Buildings

Allen Broeckelman • Lebanon, MO
417-650-5600

DREAM HOUSE -Online, chateauhomes.net
Call Marla 573-657-7040

ANTIQUe BRASS KITCHEN CABINET HARDWARE: 1 set of 54. \$30 obo 636-239-2695

CASE 1840 DIESEL SKID STEER LOADER: good tires. \$8,950. 573-765-4406.

WE STOCK FENCE!!: High Tensile, woven, barbed, panels, fencers, t-posts +more!! Ozark Farm 417-322-0161.

LIONEL TRAIN SET: Steam engine, tender, caboose and other car, track and transformer. \$195. 573-364-7465, Rolla.

BETTY CROCKER BAKING FOR TODAY COOKBOOK: Hardback. \$6.50. 417-532-2045. Lebanon. Leave message.

INGERSOLL RAND PORTABLE AIR COMPRESSOR: 85cfm, gas motor, on-trailer, works good. \$2,500. 417-543-5674.

VILLA HOMES IN ROLLA: Has NEW and USED Mobile Homes. Call David for info: 573-578-8072.

1995 CHEVY GEO METRO: 2-door, 2007 Dodge Mini Van, 2003 Ford Taurus 4-door, 706 International tractor with loader. For Sale or Trade. 573-756-3937 after 5 pm.

BE READY for DEER SEASON

Craig's **OUTDOOR Sports** (417) 926-0255
craigsooutdoorsports.com

Mon-Fri 9am-5pm • Sat 9am-Noon
9435 HWY. N Ste. A, Mtn. Grove

TIME FOR PRECISION

Hustler's residential mowers are built stronger and perform faster, allowing you to quickly maneuver around obstacles with ease. Tackle your lawn in record time with unparalleled precision, and use the time you save to do the things you love.



HUSTLER

AGRI-ENTERPRISES
For Outstanding Products & Service
1-1/2 Miles South Of Licking, MO On Hwy 63
573-674-2203 • 1-800-653-7152 • www.agri-enterprises.com

NEW BIG TEX 22GN FLATBED TRAILER



JIM'S Motors TRAILERS

I-44 at Exit 208 • Cuba, MO
www.jimsmotors.com
(573)885-2595
(800)897-9840

GREAT SERVICE!
1957-2018 GREAT PRICES!

facebook

NO \$\$\$ DOWN MOBILE HOMES- Call for details 573-499-9993 columbiadis-counthomes.com

1994 CUTLESS CIERA: auto, air, 4-door, 174,xxx miles, runs great. \$800. 636-584-9476

2009 MITSUBISHI LANCER: Needs transmission but does run in first. \$1,250, 417-543-5375.

2 WOODEN KITCHEN TABLES AND CHAIRS: \$100 or trade. 573-734-2822.

JOHN DEERE 1008: pull type, brushcutter. \$2,950. 573-765-4406.

FORD 7700 DIESEL CAB & WHEEL DRIVE TRACTOR: with loader. \$10,500. 573-765-4406.

CLARINET: with case. \$125 or trade. 573-327-9068.

2017 JAYCO FLIGHT: 19.5ft pull-behind camper, excellent condition, queen bed, table converts to bunk, tub/shower, added- Tv, stabilizer/hitch bars, Price reduced. \$10,900. 417-293-3574, after 5pm or leave message.

NORDIC CROWN II HOT TUB: W/steps. \$2,000 obo, Washington. 636-239-2695.

KIDS LITTLE TYKES RED CAR BED: w/ mattress. \$150. Desloge, 573-327-9068.

HONEYWELL SPACE HEATER: digital readout, thermostat controlled, adjustable heat levels, high/low fan, ceramic tube. \$35. 573-364-7465.

MILLER GENERATOR/WELDER: Bad motor on small 2-wheel Jeep trailer, 5,000W, Onan Engine. \$1,250. 417-543-5375.

PRIZE COUNTRY QUILTS BOOK: hardback, 230 pages, \$5.00. 417-532-2045. Lebanon. Leave phone number

2-255/65 R18 TIRES: good for spares. \$10each. 417-457-1023.

KITCHEN FAUCET MOEN: single lever, sprayer, new cartridge. \$50obo. 636-239-2695.

BEST OF THE BEST FROM MISSOURI COOKBOOK: \$6.50. 417-532-2045, Lebanon. leave phone number.

FRONT AND REAR BUMPER FOR 62'-64' CHEVY NOVA: \$100for both or trade. 573-734-2822.

2 BALE RINGS: \$25 each Newburg, 314-403-1457

1991 HONDA ACCORD: Runs. \$990. Lebanon, 775-997-5913.

JOHN DEERE 2955: Diesel Tractor, Cab & Air, with JD 720 loader. \$27,000. 573-765-4406.

Larry Heisel Rentals
Have Rock?
How about 3,500 lbs. of Hammer
Call Larry!
573-779-1500
www.larryheiselequipment.com
Rental Available in 636 or 573 area code



QUALITY REPLACEMENT COWS: COW/CALF PAIRS, BRED HEIFERS AND BREEDING BULLS AND BUTCHER CALVES, TRUCKING AVAILABLE. Otterville, 660-619-5190 or 573-230-7700.

LIVE WORK PLAY

We're HIRING!

JOBS

are available in Lebanon!

If you need a job, Lebanon, Mo. has one that's just right for you.

Laclede County employers are going above and beyond to detect and protect employees from the Covid-19 virus including distancing, face shields and temperature checks. Many of the jobs have training programs available through Ozarks Technical College and other workforce development sources.

So, go to the website and check out all the opportunities Laclede County has for you.

With over 1,000 jobs available, you will find employers ready to offer:

- Good Starting Pay Rates
- Safe Work Environment
- Good Benefits
- Great Training

lacledecountrymohasjobs.com



WISHING YOU A
 MERRY
 CHRISTMAS
 &
 HAPPY NEW YEAR

“She will give birth to a son, and you are to give him the name Jesus, for he will save his people from their sins” Matthew 1:21

BRIAN W. UTECHT
 Southwest Missouri Land Specialist
m: (417) 766-5595
o: (217) 285-9000
 brian.utecht@whitetailproperties.com



WHITETAIL PROPERTIES REAL ESTATE

HUNTING | RANCH | FARM | TIMBER

\$1.3 BILLION
344,000 ACRES
 sold company wide
 in 2019

WHITETAILPROPERTIES.COM



Whitetail Properties Real Estate, LLC - CDA Whitetail Properties | In the States of Nebraska & North Dakota - CDA Whitetail Trophy Properties Real Estate LLC | Licensed in IL, MO, IA, KS, KY, NE & DE - Dan Perez, Broker | Licensed in AZ, CO, GA, MN, ND, SD, TN & WI - Jeff Evers, Broker | Licensed in FL, OH, NY & PA - Jefferson Kirk Gilbert, Broker | Licensed in TX & NM - Jerry Bellington, Broker | Licensed in IN - Bill Miner, Broker | Licensed in AK, CA, IA & MS - Scott Shuman, Broker | Licensed in TN - Chris Winkler, Broker | Licensed in TN - Bobby Powers, Broker | Licensed in AR - Anthony Carlson, Broker | Licensed in SC, NC & VA - Chip Camp, Broker | Licensed in NC - Rich Brugh, Broker | Licensed in MI - Edmund Joel Nagaki, Broker | Licensed in WV - Debbie S. Lutz, Broker | Licensed in ID, MT, OR & WY - Aaron Millikan, Broker



Built heavy duty, to make light work of any job.



L Series 24.1 - 47.3 HP Durable cast iron and steel design



(417) 777-2391
quarleskubota.com

Call today to schedule a demo on the #1 selling compact tractor in the U.S. for over 10 years.*

- Four affordable models to choose from
- Performance-matched Kubota front loader
- Kubota diesel engine and gear or HST transmission
- Easy-to-use controls

Together we do more.

New L2501DT w/Loader Deal!

L2501DT w/loader

\$19,995 Financing Price

- NEW Kubota L2501DT
- 4wd, DIESEL, AG TIRES
- KUBOTA LOADER

- 5' ROTARY CUTTER
- 5' BOX BLADE
- NEW 18' KODIAK TRAILER W/RAMPS



KubotaUSA.com

*Based on EDA tractor sales data of under 40 horsepower models from 2009 to 2019.

© Kubota Tractor Corporation, 2020. This material is for descriptive purposes only. Kubota disclaims all representations and warranties, express or implied, or any liability from the use of this material. For complete warranty, disclaimer, safety, incentive offer and product information, consult your local Dealer or go to KubotaUSA.com.