

FREE - TAKE ONE!

Vol. 27 No. 31

OCTOBER 29, 2020

800-543-8271 • 800-665-8875

WEEKLY TRADER MAGAZINE

Find us on Facebook

@myweeklytrader AUCTIONS PG. 11

VISIT OUR NEW WEBSITE! MYWEEKLYTRADER.COM

Turn every job into a job well done.



The New MX Series 55.5-63.4 HP Factory cab available



QUARLES
SUPPLY COMPANY INC.

(417) 777-2391
quarleskubota.com

Come see the versatile, affordable new MX Series today.

- Spacious operator platform
- Comfortable climate-controlled cab with heat and air for year-round comfort
- Hydrostatic or gear transmission options
- Excellent loader lift capacity (2,275 lb.)

Together we do more.

New MX5400HST w/Loader Deal!

MX5400HST W/ Loader

- NEW Kubota MX5400HST
- 4wd, DIESEL, AG TIRES
 - KUBOTA LOADER

\$36,375
Financing Price

- 6' ROTARY CUTTER
- 6' BOX BLADE
- NEW 20' KODIAK TRAILER W/ RAMPS



KubotaUSA.com

© Kubota Tractor Corporation, 2020. This material is for descriptive purposes only. Kubota disclaims all representations and warranties, express or implied, or any liability from the use of this material. For complete warranty, safety, incentive offer and product information, consult your local dealer or go to KubotaUSA.com.

Land

For Sale

Dallas Co, MO | 40 Acres



\$89,950



- All timber and a large spring
- Easy access on a dead end road and located just off a well-maintained county road.
- Property has new trails being established
- Great parcel for whitetail deer and a fantastic roost for the long beards.
- Gently rolling terrain makes for easy access and hunting.
- Property is 35 minutes to Springfield, 15 minutes to Buffalo



WHITETAIL PROPERTIES REAL ESTATE

HUNTING | RANCH | FARM | TIMBER

Brian Utecht | 417-766-5595

Brian.Utecht@whitetailproperties.com

Missouri's Top Land Specialist in 2014,
2015, 2016, 2017, 2018 and 2019

WHITETAILPROPERTIES.COM



TIME FOR PRECISION

Hustler's residential mowers are built stronger and perform faster, allowing you to quickly maneuver around obstacles with ease. Tackle your lawn in record time with unparalleled precision, and use the time you save to do the things you love.



For Outstanding Products & Service
AGRI-ENTERPRISES

1-1/2 Miles South Of Licking, MO On Hwy 63
573-674-2203 • 1-800-653-7152 • www.agri-enterprises.com

WELSH CORGI: Red/white female. Born 9/25/19. AKC Registered, \$500. 417-746-0008.

CAR DOLLY: Like new, spare tire, hold down straps. \$900. Rogersville. 417-766-1991

BLUE HEALER BORDER CORDER COLLIE PUPPIES: both parents great with children. \$150obo. 417-741-0256.

WANTED, TIMBER TO LOG ON SHARES: Honest, reliable, references. 417-533-4607, 417-664-1195.

CIVIL WAR IN OZARKS BOOK: \$7.50. 417-532-2045, Lebanon, leave phone number.

FOR RENT LAKEFRONT HOUSE: 4 bedrooms, 3 baths, has all appliances. First and last months rent plus deposit. Phone 816-583-2421 and leave message.

VOTED #1 BEST Preowned Car Dealership

TIM'S USED CARS

(573) 341-3828 • 1334 South Bishop (Hwy. 63) • Rolla, MO
Next to Hwy CC • www.tims-used-cars.com

	2010 GMC 1500 SLT Z71, Crew Cab, 4x4, 5.3 V-8, Power Equipped, 160,xxx Miles Only \$15,900		2011 FORD F150 FX4, Crew Cab, 4x4, 3.5 Eco Boost, Power Equipped, 124,xxx Miles Only \$18,900
	2014 FORD F150 XLT Ext. Cab, 4x4, 3.7 V-6, Auto, Power Equipped, 77,xxx Miles Only \$19,900		2014 RAM 1500 TRADESMAN Crew Cab, 4x4, 5.7 V-8, Power Equipped, 106,xxx Miles Only \$19,900

LARGE SELECTION OF CARS, TRUCKS, SUVs & VANS!

#1 Selling FARM TRACTOR IN THE WORLD

Come See Us For Your Mahindra
Financing available for those who qualify
www.agri-enterprises.com

AGRI-ENTERPRISES
The Outstanding Products & Service
1-1/2 Miles South Of Licking, MO On Hwy 63
573-674-2203 • 1-800-653-7152

Mahindra
RISER

GUARDIANWARE: 1930-1950's, Turkey roaster with lid. \$195. 573-364-7465.

DREAM HOUSE -Online, chateauhomes.net
Call Marla 573-657-7040

WE'RE NOT JUST IN PRINT

Visit the newly re-designed

WWW.MYWEEKLYTRADER.COM

CHEVY CERTIFIED SERVICE
SPRING TIRE EVENT

\$200 MAIL-IN REBATE!
ON A SET OF FOUR TIRES FROM BRIDGESTONE, CONTINENTAL, GOODYEAR, HAWKINS, AND PHRELLY WHEN PURCHASED WITH A GM DRIFT/POWER CARD

LOWE CHEVROLET
"We're Easy to Deal With!"
View our Inventory



WEEKLY TRADER MAGAZINE

Serving Central Missouri in 32 counties!

417-532-9131
100 Commercial Street
Lebanon, MO 65536
myweeklytrader

- Auctions
- Auto
- Tractors
- Real Estate
- ATV's / Motorcycles
- Building Supplies
- Miscellaneous
- E-Editions

This week's ads

THIS WEEK'S CLASSIFIEDS

TOOL TABLES:
Installations, moves, recoveries, repairs, accessories, etc. 573-646-1700.

weathered BARN WOOD SIDING: 8' & 10' wide. 573-729-7226. www.pineridge rustic.com

VEHICLES: 1927-1991 www.gobheartland.com 417-545-6354.

TRUCKS: 1997-2018 FORD F-150: 18 ft brush cutter, bought new 2019, still under warranty, \$17,750/obo. Norwood 417-349-0084.

WANTED STANDING TIMBER: Butler Logging, 417-448-9323.

ROD AND REELS: fishing season is coming, \$5 and up. Conway, 417-589-8200.

1989 NISSAN TRUCK: Runs but needs clutch and body work. \$675. Lebanon, 573-453-4100.

SAVAGE MODEL NO. 270WN: with Leupold scope, \$375. Remington 770 with scope, \$300. obo. 417-679-4355.

STOCK TRAILER: 1983 Goose, goose-neck: 24', new floor. Four new 10 y truck tires. \$2450. Lebanon (417)664-2198.

QUALITY REPLACEMENT COWS: COW/CALF PAIRS, BREED HEIFERS AND BREEDING BULLS, 781-222-2222

BITTERSWEET COUNTRY

FEATURED ADVERTISER

Sakelaris Ford Lincoln, Where the Customer is Always #1!
Come See Us at Our NEW LOCATION!

ALL-NEW Super Clean, Safe Facility at 1621 Martin Springs Drive in Rolla, MO

Get COVID-19 Relief On A New Ford Vehicle!

BUILT TO LEND A HAND

NEW VEHICLE PURCHASES
3 MONTHS' DEFERRED | 3 MONTHS PAID* | 6 MONTHS RELIEF FOR PEACE OF MIND
(Qualified Buyers Financed with Ford Credit)

ON SELECT NEW 2019, 2020 & 2021 FORD VEHICLES.

0% APR for 72 mos.*
for 2020 Ford Vehicles
PLUS: Defer Three Payments* on Select New 2020 Ford Vehicles

ALSO Available on Select New Ford Vehicles: \$500 Bonus Cash of MSRP*

0% APR for 84 mos.*
for 2020 Ford Vehicles
PLUS: Defer Three Payments* on Select New 2019 Ford Vehicles

MORE PRINT ADS

MAKING FRIENDS AGAINST CANCER

Starnes Auto LLC
22115 Rt. 66
Lebanon, MO 65536
417-718-2270
417-318-3119

2000 FORD RANGER \$4,800
2003 GMC ENVOY SLE \$4,350
2008 CHEVY MALIBU \$2,500

THE ULTIMATE WOOD HEAT

ALL OF OUR FOREST RIVER VIKINGS

2019 Viking 1750Q \$14,911
2019 Viking 1750R \$14,911

2019 Viking 1750R \$14,911

2019 Viking 1750R \$14,911

1 WE ARE KW
KELLERWILLIAMS.

We are the NUMBER ONE real estate company in the United States!

AMANDA HOUGH
C:417-664-1113
O:417-883-4900
609 W. Elm • Suite B
Lebanon, MO

✓ Diagnostic
✓ Auto Body & Paint Repair
✓ Glass Repair
✓ Used Car Sales & More

GET STARTED

Starnes
Auto Body 417-588-3159

MAKING FRIENDS AGAINST CANCER

October 22, 2020
View this issue
Browse other issues

Classifieds at your fingertips

Every display ad is available online

View ads from local businesses

View the entire magazine online

WEEKLY TRADER MAGAZINE

417-532-9131
www.myweeklytrader.com

WANTED STANDING TIMBER: Butler Logging, 417-448-9323.

SAVAGE 270 MODEL 111 W/SCOPE: 2 boxes shells. \$450. 573-858-3215.

BUYING OLD BARNs AND LUMBER: 417-406-0867. Leave Message.

2 BIG CHRISTMAS WREATHS: 3ft in diameter. \$40 each obo 636-239-2695.


2 DOWCO MOTORCYCLE: covers for large cycles, \$50 each firm. Motorcycle front wheel chock, heavy duty, mounts on wooden floor, \$50, firm. Stearns riding gloves, large, never used, \$25.00. 417-457-1023.

OFFICIAL TRACTOR OF TOUGH™



Marshfield Machinery Inc.
 222 E. Madison • Marshfield, MO 65706
 417-859-2117 • www.marshfieldmachinery.com

MahindraUSA.com © 2020 Mahindra USA Inc.



NEW MAHINDRA TRACTORS

7085 4WD & LDR 85HP	IN STOCK
2655 4WD, BACKHOE 55HP	IN STOCK
2655 4WD & LDR 55HP	IN STOCK
4540 2WD & LDR 41HP	IN STOCK
2638 4WD & LDR 38HP	IN STOCK
1626 4WD & LDR 26HP	IN STOCK

USED TRACTORS

MF 4708 4WD LDR 80HP	30,000
MF 2705E 4WD BACKHOE 48HP	27,500
AGCO LT75A CAB LDR 100HP	27,500
MF 6170 W/ LDR 97HP	17,500
MF GC1723 BACKHOE 23HP	15,000
CASE 1490 83 HP	7,500
MF 175 63HP	6,000
CASE IH 235 W/ MOWER 18HP	3,500
MF 65 48HP	3,000

USED ROUND BALERS

MF 1745 4X5	8,500
NI 6254 4X5	7,500
VERMEER 505SI MESH	7,500
GEHL 2480 4X5	6,500
JD 435 4X6 MESH	6,500
VERMEER 554XL 4X5	5,500
HESSTON 560 5X6	3,000
HESSTON 550 4X6	3,500
HESSTON 530	3,500
HESSTON 5500 5X5	1,500
NH 850 5X5	1,500
VERMEER 605D 5X6	750

USED MOWER/CONDITIONERS

HESSTON 1320 9FT	5,500
CASE IH 3309 9FT	4,500

USED CUTTERS

JD MX15 15FT	8,500
RHINO SE15-4 15FT	6,500
LANDPRIDE 15FT	5,500
BUSH HOG SQ84T 7FT	1,200
BUSH HOG 109 9FT 3PT	1,000

USED MISC.

HAYBUSTER 107C DRILL	17,500
HAYBUSTER 107 DRILL	12,500
HAYBUSTER 107C DRILL	11,500
HAYBUSTER 107C DRILL	10,500
FRONTIER BALE PROCESSOR	8,500
BUSH HOG 417 TEDDER	3,500
VERMEER 8WHL RAKE	1,750
RHINO 8WHL RAKE	1,500

Marshfield Machinery Inc.
 222 E. Madison • Marshfield, MO 65706
 417-859-2117
 www.marshfieldmachinery.com



MIDWEST CONSTRUCTION

Free Estimates!

- Pole Barn • Garages • Framing
- Remodels • Roofing • Concrete
- Decks & Porches

Contact Abner Glick
417-664-1794

2-21" PUSH MOWERS: Briggs & Stratton engine, 1 runs, 1 for parts. Both \$75 obo. 636-239-2695.

2014 HOYT CARBON ELEMENT BOW: w/case and lots of accessories. \$675. Lebanon, 573-453-4100.

2020 POLARIS GENERAL: 4 1,000 4 x 4 930 miles, many extras, \$22,500. 417-559-9339.

LOG SIDING SALE: 2X8 Western Cedar .99 ft/ Pine \$1.30 ft while supplies last. www.pineridgerustic.com 573-729-7226.

ROD AND REELS: fishing season is coming. \$5 and up. Conway, 417-589-8200.

WANTED: Old Military Rifles and Pistols. 816-838-6254.

0% for 4 Years



HEATMOR Outdoor Wood Furnace

as low as **\$168** per month

HEATMOR MIDWEST

Licking, MO 65542 • 573-674-2962

CANNING JARS: 21- 1 PINT : Regular mouth, 16 new lids, 21 very clean bands, some new. Mostly Kerr. In Mint Condition. \$35. Lebanon (417) 664 2198.

1937 UNSTYLED JOHN DEERE A: runs, \$2000. 573-775-5550.

MYSTERIES OF THE OZARKS VOL-UME III: A collection of stories compiled by Ellen Gray Massey, \$6.50. 417-532-2045, Lebanon. leave phone number.

KIDS LITTLE TYKES RED CAR BED: w/ mattress. \$150. Desloge, 573-327-9068.

62 CLIVE CUSSLER BOOKS: \$4 for paperback, \$10 for hardbound. Excellent Condition. For a list call 417-457-1023.

AUNT BEE'S MAYBERRY COOKBOOK: \$7.50. 417-532-2045, Lebanon. leave phone number.

PROWLER CAMPER WINDOWS: (2) 29 3/4 X 21 3/4, (1) 23 3/4 X 21 3/4, (1) 34 X 3/4, (1) 47 3/4 X 21 3/4. \$200 FOR ALL. 417-664-8823.

BITTERSWEET AT A GLANCE BOOK: hardback, \$15.00. 417-532-2045, Lebanon, leave phone number.



Cheyenne Acres
Horse & Tack
BUY - SELL - TRADE
by Rolla, MO
Call For Directions & Availability
Call Kip
573-368-9402

CANNING JARS: 15 \endash 1 PINT : Wide mouth, 24 new lids, 16 very clean bands, some new. Mostly Kerr. \endash \endash In mint condition. \$25. Lebanon (417) 664 2198.

CHERRY PICKER: made from double strength pipe, \$125. Willow Springs 417-469-0325.



06 CATERPILLAR 262B
\$24,500
1700 hrs, 82 hp, Joy Stick, Power Bucket Latch
573-465-0276

PT CRUISER: Good condition, \$2,500. Marshfield, 417-859-4401.

COZY HOME W/CHAINLINK FENCED BACKYARD: 2 bedrooms on main level and 3rd upstairs, ch/a on main, upstairs window/wall unit, newer appliances. 417-531-5828. Lebanon.



KUSTER LOGGING
BUYER of Standing Timber Oak and Walnut
Dozing Now Available
417-259-0047
References Available

ATTN PREPPERS: Preparedness Meetings happening every Tuesday night in Lebanon MO, starting November 3rd. Call 417-830-4039 for details.

VILLA HOMES IN ROLLA: Has NEW and USED Mobile Homes. Call David for info: 573-578-8072.

KITCHEN FAUCET MOEN: single lever, sprayer, new cartage. \$55. obo 636-239-2695.

WANTED TO BUY ANTIQUE CARS: Convertible, Corvettes, unrestored, motors, parts considered. 870-324-1154.

WEATHERED BARN WOOD SIDING: 8" & 10" wide. 573-729-7226. www.pineridgerustic.com

2-55/65 R18 TIRES: good for spares. \$10each. 417-457-1023.

OLIVER 1650 DIESEL: has cab/, narrow front, runs good, \$3,750obo. 573-690-9406.

2-JOHN DEERE REAR RIMS: 1138 ,new. \$200. 417-766-1991

QUALITY REPLACEMENT COWS: COW/CALF PAIRS, BRED HEIFERS and BREEDING BULLS, TRUCKING AVAIL-ABLE. Otterville, 660-619-5190 or 573-230-7700.

FIREARMS: Professional Repairs and Res-torations. Baron's Gunsmithing. 573-363-5801, Camdenton.

THE FIRST 100 YEARS OF SOUTH-WEST MISSOURI STATE UNIVERSITY: in Springfield. Hardbook, \$12.50. 417-532-2045, Lebanon. leave phone number.

NO \$\$\$ DOWN MOBILE HOMES- Call for details 573-499-9993 columbiadis-counthomes.com

2005 HYUNDAI XG350L: 4-Dr, V6, Auto, Leather, Cold Air, Runs Good, Needs Rear Struts, \$950.00. Call for info. 417-543-0048. Mansfield.

REGISTERED HEREFORD & ANGUS BULLS: Home raised, Some Show-Me Select Qualified. 573-701-7828. Belgrade

MISSOURI GARDENER'S GUIDE: 421 pages, over 170 color photos, \$5.00 417-532-2045. Lebanon. Leave phone number.

LIONEL TRAIN SET: Steam engine, tender, caboose and other car, track and transformer. \$195. 573-364-7465, Rolla.

TRUCK LOAD OF FLEA MARKET & AUCTION ITEMS: \$200 or trade. 573-327-9068

BEST OF THE BEST FROM MISSOURI COOKBOOK: \$6.50. 417-532-2045, Leba-non. leave phone number.

MIXED GRASS HAY: 4x5 bales, twine wrapped, \$30. Picked up in field. Delivery available. Vichy, MO. 573-578-6212.

CUSTOM SAW MILLING: Lebanon. 417-533-4607, 417-664-1195.



BUCKNER LUMBER LLC
is looking to buy walnut logs.
Competitive prices paid.
Call John @
417-967-3189



Is Your Log Home **UGLY?**
Starting To Look
Professional Staining & Repair
(Log Homes & Wood Siding)
Call Pine Ridge Rustic
Log Home Building Supplies **573-729-7226**
www.pineridgerustic.com

Register to win the Weekly Trader Pedal Power Tractor!

(A \$260.00 value)



**PERFECT
GIFT FOR
CHRISTMAS!**

To Register:

Look for the Weekly Trader Pedal Power Tractor on participating retailer's ads in the November 5th issue of the Weekly Trader and register at their store.

Register from November 6 to December 12
at participating retailers.

The winner will be announced on December 15 and will be contacted and can pick up the Tractor where they registered in plenty of time for Christmas.

WEEKLY
TRADER
MAGAZINE



417-532-9131 • www.myweeklytrader.com

STUMP GRINDER:~ DR Pro XL 11.7 HP with electric start. Never used. \$2100. Norwood 417-459-6313

1980 FOR RANGER DOORS: excellent condition, fits several years, 2/3-1/3 seat and floor carpets. \$300. 573-438-2672.

PRIZE COUNTRY QUILTS BOOK: hard-back, 230 pages, \$5.00. 417-532-2045. Lebanon. Leave phone number

15 HEREFORD HEIFERS: Open and ready to breed. 573-701-7828.

THE AMISH COOKBOOK: Recollections and recipes from an Old World Order, hard-back, \$8.50. 417-532-2045. Lebanon, leave phone number.

CHIPPER/ SHREDDER: Stanley 11 HP, 270cc engine. Like new \$700. Norwood,~ 417-459-6313.

D&H OUTDOOR WOOD FURNACES SINCE 1986: Forced air, 90% efficient, fire proof insulated, thermostat control. Complete Heating and Cooling Systems. 573-743-6943 or 573-247-5585, Salem.

2019/2020 4x5 ROUND BALES: plastic twine, always shedded, pay for now and will store until April. Delivery or pickup. St James, MO. 573-467-5043 or 573-699-4577.

AMMUNITION: .223, 9mm, .45cal, bulk or box. 417-257-8385, pick-up or shipping available. www.cherokeeammunitions.com and on Facebook.

RHINELAND, MO. PICTORIAL HISTORY: "Winter in a Missouri River town," 190 pages, \$15.00. 417-532-2045. Lebanon. Leave phone number.

EARNIE DEANE OZARKS COUNTRY BOOK: A collection of articles about folklore, places, people, customs, history. \$7.50. Lebanon. 417-532-2045, Lebanon. leave phone number.

A SETTLEMENT HISTORY OF FORT LEONARD WOOD AREA: including forgotten towns of Pulaski County, cemetery listings, etc. \$15.00. 417-532-2045, Lebanon. Leave phone number.

175 ORIGINAL VCR MOVIES: \$1/piece. 573-327-9068.

AMERICAN MADE 9MM: Brass, ammo, not reloads, \$.40 per round. 417-399-6687

Starnes Auto LLC
 22115 Rt. 66
 Lebanon, MO 65536

417.718.2707 Cell
 417.588.3159 Office www.starnesauto.com

1998 FORD ESCORT BLUE, 2 DOOR, 224,XXX MI.	\$1,000
2003 FORD F150 WHITE, 4 DOOR, 167,XXX MI.	\$5,600
2003 FORD F150 WHITE, REG CAB, 5 SPEED, 222,XXX MI.	\$3,200
2003 GMC ENVOY SLT SILVER, 2WD, 110,XXX MI.	\$4,250
2006 CHRYSLER T&C BLUE, 185,XXX MI.	\$2,850
2007 BUICK LACROSSE GRAY, 134,XXX MI.	CALL
2007 PONT GRAND PRIX BLUE/GREEN, 160,XXX MI.	\$2,650
2007 CHEVY HHR BLUE, 2LT, 157,XXX MI.	\$2,750
2008 SATURN AURA SILVER, 4 DOOR, 179,XXX MI.	\$3,000
2009 CHEVY MALIBU SILVER, 42,XXX MI.	\$5,850
2011 FORD FUSION BLUE, 101,XXX MI.	\$6,000
2011 FORD FUSION SILVER, 114,XXX MI.	\$5,800
2012 CHEVY SPARK BLACK, 190,XXX MI.	\$2,500
2012 FORD FUSION WHITE, 120,XXX MI.	\$6,500
2013 GMC TERRAIN GREEN/GRAY, 113,XXX MI.	\$10,200
2014 GMC TERRAIN SLE WHITE, AWD, 125,XXX MI.	\$6,500
2015 BUICK VERANO PEARL WHITE, 77,XXX MI.	\$9,250
2015 GMC TERRAIN SLE BLACK, 50,XXX MI.	\$12,800
2015 GMC TERRAIN SLE BLACK, 68,XXX MI.	\$12,200
2015 GMC ACADIA SLE CHARCOAL, 103,XXX MI.	\$13,500
2017 FORD FIESTA SILVER, 26,XXX MI, GOOD TITLE.	\$10,000

SPECIALIZING IN HEAVY DUTY GATES



Cow Country Gate Sales

Call Randy: 573-569-4754
 or Home: 573-539-2528
 Located at: Zimmerman Welding
 16889 Hwy 52, Barnett, MO

DARDEN PROFESSIONAL TIMBER HARVESTING, BUYING STANDING TIMBER: Great prices, improve wildlife habitat and improve forest health. State Certified & Fully Insured! 573-247-4808 or 573-739-1122. Salem

TUFFY SPECIAL -Volume Prices 573-657-2176 amegamobilehomes.com

RUGER .223 GUN: w/Redfield scope, sling, monopod and ammo. \$575. Lebanon 573-453-4100

ANTIQUE KEROSENE STOVE: 4 Burner w/oven. \$175. 573-438-2672.

1989 NISSAN TRUCK: Runs but needs clutch and body work. \$675. Lebanon 573-453-4100.

I BUY....used mobile homes. Call or text 573-338-6250 or email GregS.CDH@outlook.com

GARDEN TILLER-~ DR PRO: pull with ATV or mower, 36" wide, upto 7.5" deep.~ Power remote control, electric start . \$1500. Norwood, 417-459-6313.

FOR SALE: 1988 Chevy p/u 1/2 ton, 4x4, 5 speed manual trans, new tires, not running. \$1600. JD Gator 2005, 2whd, hyd dump bed, 560 hours, \$3,500. 5ft, pull behind mower(Encore) elec. start, new \$1,800. 1998 Javelin Bass Boat, 225hp, Merc Javelin dual axle trailer, \$7,000. 2018 Alweld Jet Boat, 200hp Merc. trolling motor, new stereo, silver gray color 14 hrs. \$32,000. 2005 Chevy SSR p/u, 6-speed manual trans, 6.0 engine, red-blk interior, 36,000 miles, \$30,000. 1948 Chevy p/u 5 window, \$3000. Wood circulator stove(Rebel) brand triple wall flue pipe, \$500. 573-528-2699.

Buildings • Hunter's Cabins • Lawn Furniture



JAMCO Builders

JAMCO Portable Buildings
 800-688-2064 • 307 Enterprise Dr. • Seymour, MO • www.jamcobuilders.com

Rent To Own Plan

LEASING 50+ ACRES: Fenced, for hay or horses, no cattle, 2 ponds, waterers, rent in lieu of taking care of pasture. No horse traders. Outside of Steeleville 573-743-3420.

SCHULTE SX 318: 18 ft brush cutter, bought new 2019, still under warranty, \$17,750/obo. Norwood 417-349-0084.

ANTIQUE BRASS KITCHEN CABINET HARDWARE: 1 set of 54. \$40 obo 636-239-2695

RABBITS: Hotot dwarf, mini lopears, 636-629-0113.

BITTERSWEET COUNTRY BOOK: edited by Ellen Gray Massey, \$6.50. 417-532-2045, Lebanon. Leave phone number.

BETTY CROCKER BAKING FOR TODAY COOKBOOK: Hardback. \$6.50. 417-532-2045. Lebanon. Leave message.

CAPPER'S WEEKLY VINTAGE SEARCHLIGHT COOKBOOK: hard-back \$10. 417-532-2045, Lebanon. Leave phone number.



Wright Spray Foam Insulators, LLC
Commercial & Residential
Call for FREE Estimates!

Ervin Gingerich 417-926-2052
B. Eli Yoder 417-746-4932

NORDIC CROWN II HOT TUB: W/steps. \$2,250 obo, Washington. 636-239-2695.

HORNADY LOCK AND LOAD RE-LOADING PRESS: for rifle and pistol ammo w/accessories. \$375. 573-301-2148

ANTIQUA ROUND OAK DINING TABLE: W/lions paw feet, and 6 spindle back chairs. \$600. 573-438-2672.x

VEHICLES: 1927-1991 www.goheartland.com 417-343-6354.

160 ACRES: For sale, 3 6x6 deer stands, lakes, CRP pays \$11,320 yearly, Sullivan County, Mo, \$398,500. 314-471-4069.

WELSH CORGI: Red/white female. Born 9/25/19. AKC Registered, \$500. 417-746-0008.

CAR DOLLY: Like new, spare tire, hold down straps. \$900. Rogersville. 417-766-1991

BLUE HEALER BORDER CORDER COLLIE PUPPIES: both parents great with children. \$150obo. 417-741-0256.

FOR RENT LAKEFRONT HOUSE: 4 bedrooms, 3 baths, has all appliances. First and last months rent plus deposit. Phone 816-583-2421 and leave message.



BE READY for DEER SEASON

Craig's **OUTDOOR Sports** (417) 926-0255
craigsootdoorsports.com

Mon-Fri 9am-5pm • Sat 9am-Noon
9435 HWY. N Ste. A, Mtn. Grove

WANTED, TIMBER TO LOG ON SHARES: Honest, reliable, references. 417-533-4607, 417-664-1195.

CIVIL WAR IN OZARKS BOOK: \$7.50. 417-532-2045, Lebanon, leave phone number.

GUARDIANWARE: 1930-1950's, Turkey roaster with lid. \$195. 573-364-7465.

DREAM HOUSE -Online, chateauhomes.net Call Marla 573-657-7040

WANTED STANDING TIMBER: Butler Logging, 417-448-9323.

SAVAGE 270 MODEL 111 W/SCOPE: 2 boxes shells. \$450. 573-858-3215.

CANNING JARS: 21- 1 PINT : Regular mouth, 16 new lids, 21 very clean bands, some new. Mostly Kerr. In Mint Condition. \$35. Lebanon (417) 664 2198.

MYSTERIES OF THE OZARKS VOLUME III: A collection of stories compiled by Ellen Gray Massey, \$6.50. 417-532-2045, Lebanon. leave phone number.

PROWLER CAMPER WINDOWS: (2) 29 3/4 X 21 3/4, (1) 23 3/4 X 21 3/4, (1) 34 X 3/4, (1) 47 3/4 X 21 3/4. \$200 FOR ALL. 417-664-8823.

TAYLOR TRUCKS & EQUIPMENT

417-924-2026 • 2676 Hwy. 5 Mansfield, MO

New Mowers! Bush-Whacker, Big Bee Storage Containers & Dry Vans - 20' - 53'
Farm Tires, PTO's & Parts for Rotary Mowers, Farm Tractor Implements
Plows, Used 15" Bush-Whacker Now In Stock, Discs, and More Skidsteer Attachments: Pallet Forks, Buckets, Grapples, Hay Spears & Tree Sheers - RR Ties



Bush-Whacker Heavy Duty Rotary Cutter

TRAILER PARTS & REPAIR

NEW SEMI TIRES- DRIVE & STEER

We Invite you To Come By & Look Us Over! Located 2.5 Miles North Of Mansfield, MO On Hwy 5

1937 UNSTYLED JOHN DEERE A: runs, \$2000. 573-775-5550.

BUYING OLD BARNs AND LUMBER: 417-406-0867. Leave Message.

2 BIG CHRISTMAS WREATHS: 3ft in diameter. \$40 each obo 636-239-2695.

KIDS LITTLE TYKES RED CAR BED: w/ mattress. \$150. Desloge, 573-327-9068.

2 DOWCO MOTORCYCLE: covers for large cycles, \$50 each firm. Motorcycle front wheel chock, heavy duty, mounts on wooden floor, \$50,firm. Stearns riding gloves, large, never used, \$25.00. 417-457-1023.

2-21" PUSH MOWERS: Briggs& Stratton engine, 1runs, 1 for parts. Both \$75obo. 636-239-2695.

CANNING JARS: 15 vendash 1 PINT : Wide mouth, 24 new lids, 16 very clean bands, some new. Mostly Kerr. In mint condition. \$25. Lebanon (417) 664 2198.




Larry Heisel Rentals

We Rent!

Call Larry!
Rental Available in 636 or 573 Area Codes
573-779-1500
www.larryheiselequipment.com

BAIL BONDS



BAILMAN BONDING

I operate in the following counties: Greene, Christian, Dallas, Benton, Webster, Hickory and Polk.

(417) 501-JAIL

AGENT MICHAEL REEDER. LICENSE #304910

REAL ESTATE & PERSONAL PROPERTY

PUBLIC

AUCTION

RAIN OR SHINE

PRACTICE SAFE DISTANCING- HELP OUT BY SPREADING OUT!

SATURDAY-OCTOBER 31-9:00 AM

VIEW MORE PICTURES AT WWW.HASKINSAUCTIONS.COM

LOCATION ADDRESS: 41675 US HWY 160, CAULFIELD, MO **DIRECTIONS:** 1/2 mile west of Caulfield on US Hwy. 160. Watch for Haskins Auction signs.

**Estate of Lavonne Paulette Metz
Melinda Abraham, Conservator**

REAL ESTATE @ 12:00 • Winnebago, Pickup & SUV Sells Just Before Real Estate



Real Estate will be offered in 3 tracts: **TRACT 1**-23.3 AC +/- in Ozark county with a new pine log home containing 2541 sq. ft. base, 2 York heat pumps w/gas backup, 1 ductless mini split w/4 heads, vaulted ceiling, new appliances, fireplace inside & outside, 12'10" marble kitchen countertop w/7 bar stools, 5 bedrooms, 4 bathrooms, 2 upstairs bonus rooms, gas on 3 sides. A truly remarkable new home. **TRACT 2** -204.2 AC +/- being in Howell County and adjoining Tract 1--approximately 70-75% open pasture with balance in timber. There is an older wood barn, along with a hay shed and another hay shed at the end of an old milk barn. A pipe corral sets between the 2 metal sheds. There is a 3 bedroom, 2 bathroom mobile home with a garden tub, gas heat & air, well, lease LP tank. 2020 taxes are approx. \$500.00 **TRACT 3**--will be combination of tracts 1 & 2. **Inspection of property will be October 17 and 24 from 11:00 AM - 2:00 PM or by appointment by contacting David Haskins at 417-257-4446. This real estate sells subject to probate court approval.**

Terms and conditions of the sale are: Ten percent (10%) down on the day of auction. Balance due in full the day of closing. Sale of this real estate shall not be contingent upon any financing, appraisal, sale of other property, inspection or otherwise by the buyer(s) and that they understand that this real estate is being sold in an "AS-IS" condition, without any warranties or guarantees as to its condition of any kind, expressed or implied. Buyer(s) understand and agrees that the conservator and auctioneer makes no claim(s) as to exact boundaries, corners, and fences being on the line, and must satisfy themselves as to such. Closing cost such as (closing fee, title search-examination, attorney fees, title insurance, title service charge, and recording fee) shall be split equally between buyer(s) and seller(s). Taxes will be prorated, and surveying, if any, shall be paid by the buyer(s). Commission is to be paid by the seller(s).



ALL PERSONAL PROPERTY SELLS ABSOLUTE

- WINNEBAGO MOTOR HOME • VEHICLES • TRACTORS • EXCAVATOR •
- SIDE BY SIDES • FARM IMPLEMENTS • 0-TURN MOWERS • TOOLS • TRAILERS •

2018 Winnebago Forza motor home, M-38W Series, 340 Cummins Allison trans, 3 slides, 2,218 miles •2017 Chev. Crew Cab Z71 Silverado 2500 HD, LTZ Duramax 6.6 diesel w/gooseneck hookup, automatic, 3.73 RE, 4wd, 40765 miles •2017 Buick Enclave 3.6 premium package, 24,656 miles •1947 GMC V6, 4-spd dump truck, 22,468 miles •1951 International L130 6-cyl 4-spd, 52,717 miles flat bed •MF 5455 cab tractor w/M646 Bush Hog loader, diesel 2wd, 2183 hrs •Kioti RX 6620 cab tractor 4wd Powershift ECO Crdi w/Kioti KL7320 loader, 399 hrs. •International 1066 tractor w/500 Koyker loader •International 856 tractor w/ Koyker loader •MF 260 diesel tractor •Cub tractor NOT complete •Bobcat 337 Excavator w/extra buckets 200 hrs. •2016 Delta tilting bumper trailer w/winch •2015 16' Calico stock trailer •2010 Cargo bumper trailer 5'x12' •Kubota RTV X1140 4wd crew side by side 274 hrs. •JD Gator XUV560 side by side 4wd 538 hrs. •JD CX Gator, 2wd •Bad Boy 726 cc DT

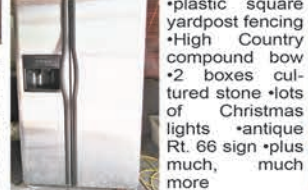


Elite 60" 0-turn mower 56 hrs. •JD EZ Trak Z425 54" 0-turn mower 310 hrs. •15' LandPride RC5515 batwing brush cutter •10' brush cutter •10' hydraulic box blade •IA offset disc 7' 2420 •Modern mfg. 7' 3-pt rock rake •2'x8' roller •3-pt carryall •3-pt stump grinder •MF 6' 3-pt box blade •3-pt King Kutter plow •LandPride 7' finish mower 3-pt •King Kutter 500 3-pt seeder •3-pt 4' tiller •bale spikes •pallet forks •400 gal. fuel tank w/stand •Honda FRC800 rear tire tiller •JD 510 baler(salvage) •Hesston silage wagon(salvage) •LandPride 7' 3-pt ground leveler •Agri-Fab lawn sweep •Taylor-Way 3-pt post auger •Hobart Handler 210 wire feed welder •Hydro-Tekus hot water pressure washer •2-wheel lawn trailer •tank sprayers •Stihl FS38 trimmer •BS5500 watt generator •several battery chargers •3 floor jacks •hydraulic press •engine stand • large shop fan •King 10 gal. sand blaster •several upright tool chests •Poulan Pro chain saw •lots of sockets, c-clamps, hand grinders •Porta-Power •Dorman nut & bolt bins •metal shelving •several shop-vacs •open & box-end wrenches •air tools •drills •bolt cutters •air hose reel •electric saws, drills •5th wheel mounts •Delta Pro tool box alum. •ladders •scaffolds •fuel tank on 2-wheel trailer •alum 11' flat bottom boat •4' 3-pt blade •(6) 12' corral panels •headgate •Lil Kreeper feeder •6x6x12' square tubing •scrap metal •Bush Hog RT562 3-pt rear tire tiller •JD 6 row corn planter •MF 1450 baler •rake •Vicon disc mower •Kuhn GMD600 mower •approx. 55 4x5 bales grass hay •lots, lots more



APPLIANCES • HOUSEHOLD

New Lazy-Boy couch •2 new recliners •2 new rockers •2 new queen bedroom sets (1 is a Temper-pedic bed) •2 new full bedroom sets • New Maytag front load washer & dryer •new Frigidaire chest freezer •new Shark IQ Robot •Samsung 56" color TV •Samsung 66" color TV •large double propane cooker •several single propane cookers •Frigidaire 26 cu ft side-by-side w/indoor ice maker •Frigidaire upright freezer •Hotpoint washer •Whirlpool dryer •hospital bed •decorative stone •plastic square yardpost fencing •High Country compound bow •2 boxes cultured stone •lots of Christmas lights •antique Rt. 66 sign •plus much, much more



AUCTIONEER'S NOTE: NOTE early start time of 9:00. Many nice pieces of personal property to sell absolute. An opportunity to purchase an exceptional parcel or parcels of Real Estate with an awesome home. See you Saturday.
Thanks, David

REAL ESTATE • ESTATE • FARM & BUSINESS LIQUIDATIONS
MO Lic. 0112 AR Lic. 1059

David HASKINS AUCTIONS

call **417-257-4446** • Gainesville, MO • 417-679-4997
www.haskinsauctions.com • email: info@haskinsauctions.com

David Haskins Auctioneer

TERMS: Cash or approved check. Conditions: I.D. required to register; items sold as is, no warranty. Nothing loaded or removed until paid for in full. Announcements made day of sale take precedence over any printed material. Auction service, employees, and/or owners are not responsible for accidents. Concessions and porta-potty available. **•BUYERS ARE ENCOURAGED TO ALWAYS INSPECT MERCHANDISE PRIOR TO BIDDING•**

STARBECK QUILT AUCTION



Ron and Wanda Starbeck are retiring and will sell quilts and fabric at public auction on:

Saturday, November 7th, Beginning at 10:00 AM

Location: 622 Old Highway 66 Bourbon Mo 65441
Calvary Baptist Church Gymnasium

Directions: From Interstate 44, take Exit #218-Highway C exit, go to South of Interstate and go West (right) on South Outer Road-Old Highway 66 half mile to auction. Roads will be marked day of sale.

QUILTS OVER 100 NEW QUILTS-ALL VARIETIES-ALL SIZES-SOME HAND MADE

(2) hand quilted Grandma's Basket of Flowers, (2) hand quilted Grandma's Flower Garden, (5) double Wedding Ring quilts-various colors, **KING SIZED QUILTS;** Card Trick/Spinning Star, Eureka Log Cabin, Trip Around the World, Bargello, Log Cabin, Mariners Star, Medallion, Chopped Blocks, My Sweet Rose, Starstruck, Lone Star, Log Cabin Star comes with matching Queen size, **QUEEN SIZED QUILTS;** Bargello, Grandma's Flower Basket, Log Cabin Fan, Pieced Star, Anita's Arrowhead, Star Log Cabin, 10 Patch-feed sack fabric, Broken Star, various color Pinwheel, Monet's Wedding Ring, Chopped Blocks, Card Trick, Starstruck, Disappearing Hour Glass, Pinwheel, Log Cabin Stars, Broken Arrow, Scrappy, Rippling Waves, Hodge Podge, Block & Fan, Eureka Log Cabin, Melinda's Heart, Starstruck, Disappearing 9 Patch, **FULL SIZED QUILTS;** Grandma's Log Cabin, Log Cabin Fan, Stack N Whack, Embroidery Tulips, Country Heart, Interlocking Block, Starstruck, Trip Around the World, **TWIN SIZED QUILTS;** Batman, Power Rangers, Green Hornet, Sun Bonnet Sue, Scrappy Blocks, Country Living, Real Tree deer, Real Tree deer/turkey, Turkeys, Pieced Block, **BABY QUILTS;** Pieced Bears, Love Bears, Bowtie, Sun-Star-Moon, Sports & Elephants, I Spy quilt, Buffalo Bill applique, Forest Animals, Farm Scene, Sleep Bears, Circus Animals, Cupcakes, Pieced Blocks, Patch-antique flower sacks

COUCH THROWS

Real Tree Camo, Bird Dogs, Patriotic-Horses, Embroidered Flowers, Indian on Horse, Pheasant & Dogs, Pheasants, Jesus in Garden, pink True Timber, pink Duck Dynasty, Cabin in the Woods, Eagle Panel, Wolves, Native Americans, Mizzou, Flying Eagle

FABRIC

2,000 yards assorted varieties 6 yard flat fold prints, (30) 15 yard bolts of backing-108", (32) 15 yard bolts country floral, lot 15-25 yard bolts solid color fabrics-brown-pink-purple, lot 15 yard bolts fall Turkeys-fall prints-wall hangings

AUCTIONEERS NOTE:

Quilts will be available to view inside the gym, but will be sold outside in parking lot, weather permitting. The quilts will be available for preview Friday, November 6, from 5-7 PM.

Lunch will be served by Calvary Baptist Church Ladies Group

VIEW OUR PHOTO GALLERY ON
www.breheauction.com

We plan to abide by the CDC guidelines regarding the COVID distancing and PPE guidelines.

BREHE AUCTIONEERING SERVICE, LLC
Union, MO: (636) 583-0841 Owensville, MO: (573) 437-3454
www.breheauction.com
LICENSED AUCTIONEERS:
Kerry Brehe 314.954.3798 Josh Brehe 314.603.3129 Harry Engelhart 636.399.3743
Announcements made day of sale supersede all printed material.
TERMS: CASH, PERSONAL CHECKS WITH PROPER I.D., BUSINESS CHECKS WITH BANK LETTER AND NO OUT OF STATE CHECKS UNLESS APPROVED BY SELLER. Email Us At kkauction@sbcglobal.net
Everything sells as is with no guarantees.



PUBLIC AUCTION

SATURDAY, OCTOBER 31 • 9:00 A.M.

Directions: #3363 Hwy. 68, SALEM, MO

From Salem take Hwy. 19 north to Hwy. 68. Follow Hwy. 68, 3.5 miles to sale site. Watch for signs.

SELLING THE FOLLOWING DUE TO SALE OF FARM:

Fuel Cans - 1-Ton Chain Hoist - Roll-Around Toolbox
 Bench Drill Press - 135psi 60 Gallon Air Tank - Hack Saws
 Organizers - Welding Supplies - Air Tire Changer - Engine Stand
 Tire Tools - Shop Hammer - Torches & Tanks - Band Saw
 Maytag Washer - 10hp Gas Welder on Trailer, Miller
 Straps - Southbend Machinist Lathe - 2 Cow Rubs
 Tap & Dies - Pipe Threaders - Hand Saws - Air Hose & Reel
 '87 Ford Tailgate - 2 Old Hoosier-type Cabinets
 Leaf Blower - Sockets & Wrenches
 © 2003 Fleetwood Discovery, 87,600 Miles, 330hp Cat Engine,
 Michelin Tires, 4 Slide-Outs, 7500 Watt Generator, Very Nice
 Igloo Dog Houses - Lot of Treated Lumber
 20' Gooseneck Stock Trailer, Built by Randy Wisdom, Like Brand
 New
 Yard Wagons - Belting - 300 Gallon Fuel Tank on Stand
 300 Gallon Fuel Tank w/Pump in Safety Container
 1971 Case 580 Backhoe, Been Gone Through
 1988 Tractor, 3 Cyl. Air Cooled, Memo/Doitz #M451 39077
 Rhino 6' Bush Hog 3pt. Stump Jumper, Like New
 1975 GMC 366 Dump Truck, 5&2 6500 Series, Good Shape
 Full Roll of Barbed Wire - Fencing Supplies - Truck Box
 1971 Merhow 2-Horse Trailer w/Title
 Bush Hog Auger HD 12" Auger, Hydraulic, Excellent
 ©Cat 951C-1974 Dozer, Been Gone Through, Excellent Shape
 ©1997 1838 Case Skid Steer, 45hp Kubota, Brand New Engine,
 Good
 Early 1970s Cat D5 Dozer, Been Gone Through, Tilt Blade 106 96J
 Box of Nails, Bostitch - Wheelbarrow - 14, 18' 2x6s, New
 14, 20' 2x4s, New - Partial Roll of Barbed Wire
 1970 180 AC Tractor, New Engine, Diesel, Bush Hog
 2845 QT Loader, Good Tires, Ready to Work
 House 3pt. 10' Bush Hog, Running, Wheels
 3pt. Bale Spike - 235 6 Cyl. Engine - 100+ ft. 1/2" Cable
 Trailer House Wheels Tires - Torch Tanks - Nail Kegs
 Industrial Fans - Jepsen Metal Cutoff Saw
 Round Wash Tub - Dollies - Misc. Lumber
 Lots of Building Supplies - OTR Tractor Seat
 Lots of PVC Pipe, 1/2" to 4", New - Wooden Crates - Tile
 Seeder - Coolers - Hoses - Lots of Wooden Boxes, Neat
 Camp Supplies - Glass Jars - Granite Pans - Horse Shoes
 Toolboxes - Buckets - Wrought Iron Headboard
 Chains - Several Pounds Copper - Electric Fence Supplies
 Chicken Wire - Yard Roller - Stall Wall - Drain Tile
 30+ T-posts, 6' - Fence Stays - 28, 12' Panels, Corral System
 4' Main Gate - Hay Trough - Metal Stock Tanks - Lot Scrap
 Lot of Pipe, 1-3" - Rail Road Ties - 50+ Pcs. Used Tin, 10'
 Treated 10" Corner Posts - HD Steel Trailer Bed
 Danuser 3pt. Auger - Bale Ring - Round Stock Tank
 3210 Bush Hog, 10.6 Cut, Pull-type, Front Chains, Excellent
 7' Box Blade - 3pt. Carry-all - 3pt. Bale Spike
 2, 12' Feed Troughs - Old John Deere Horse Drawn Sickle Mower
 3pt. Bale Unroller - Front End Bale Spike - 3pt. 6' Blade
 Basket & 10 Weights - 3pt. Ground Tiller - 2 Rank Dry Wood
 16' Utility Trailer w/Title - Cedar Picnic Table - Reese Pintle Hitch
 Truck Chains - Plastic Water Tank - BBQ Grill - Metal Trash Cans
 Yazoo 61 Commercial, 27hp Kohler, 600 Hrs., Zero Turn, Excellent
 Shape
 Concrete Stamps - Plastic Lawn Chair - Dog Feeder
 Foam Flooring - Horse Tack - Lariat Ropes - Bridles
 Scoop Shovel - 25lb. Propane Tank - Shop Cart - Office Chairs
 Luggage - Wrought Iron Lawn Furniture - Push Mower
 Storage Bins - Complete Set of Horse Farrowing Tools

Barrel Chair - GE Refrigerator - Wind Tunnel Vac
 Rakes - Shovels - Firewood Rack - Longhorn Cow Horns
 RH Golf Club Set - Suzuki 250 Quad Runner, Bad Motor
 © Billy Royal Show Saddle - 155,000 BTU Salamander
 1949 Military Air Compressor 110-220 - Shop Vac
 Saw Horses - Sad Irons
 Mitsubishi MT210 Lawn Tractor
 Diesel 6" Deck 675 Hrs., Bought New
 3pt. Hitch - Paul Brown Saddle - Bench Vise
 Lots Grade A Bolts - C-clamps - Grinders
 Floor Jacks - Oils & Grease - Air Tools
 Drop Light - Granite - 25 Gallon Sprayer
 Key Start Craftsman 22" Push Mower
 1996 Honda Forman 400 4x4 - 95 Polaris 4x4 425
 Refrigerator/Freezer - Freon Gauges
 2 Oak Entertainment Centers - Antique Desk
 Plant Stand & Watering Bakers Rack - File Cabinet
 Cherry Computer Desk & Chair
 Queen Anne Style Table - 2 Bookcases
 Bathroom Storage Cabinet - Asst. Suitcases
 Asst. Lamps & Pictures - Asst. Board Games
 Small Dining Room Table - Serving Cart, Oak
 Padded Dining Room Chairs - Dishes, Pots & Pans
 Loveseat - Twin Bed w/Under Storage Drawers

Panasonic Microwave - Reclining Chair
 Emerson 42" TV - Gun Cabinet - 7' 3pt. Bush Hog Box Blade
**AUCTIONEER'S NOTE: All the items have been under
 roof and well maintained, ready for work or play.
 See you there! - Tom**



OWNERS: BOB & MARJORIE PYATT

ANNOUNCEMENTS AT AUCTION TAKE PRECEDENCE OVER PRINTED MATTER

WULFF AUCTION

Auctioneers:

Col. Tom Wulff - Col. David Wulff

498 Hwy. B, Salem, MO 65560 • 573-729-8476

Clerk: Tracy Strange Cashier: Nancy Inman

See Wulff Auctions at www.thesalemnews.com/auctions

TERMS: CASH OR
 APPROVED CHECK -
 I.D. REQUIRED
 NOTHING REMOVED
 UNTIL SETTLED FOR

Licensed
 Appraisals



RAIN OR SHINE
 OWNER & AUCTION
 PERSONNEL NOT
 RESPONSIBLE FOR
 ACCIDENTS AT
 SALE SITE

**FIREARMS,
RELOADING,
AMMO,
OUTDOOR**

GUN

Auction

Saturday, November 7, 2020 • 10:00 AM

Location: Rt 3 Box 49K Ava, MO 65608

Directions: From Ava, travel approx. 4 miles on West 76. Auction will be on the left. Watch for Cheyney Auction Company signs.

OVER 60 GUNS!

- Winchester model 54 cal .22 Hornet s# 40229A
- Winchester model 70 cal .243 win s# 731989
- Marlin model 336C cal .35 rem s# 99012124
- Winchester model 70 carbine cal .223 rem s# G1679193
- Remington model 770 cal .243 rem s# M72065089
- Winchester model 70 cal .264 win mag s# 832660
- SAKO cal .300 weatherby mag s# 931045
- Savage cal .22-.250 rem s# K139277
- Mauser cal .257 Roberts, Birdseye maple hex barrel
- Baikal 20 ga over & under s# IZH-270EM-1C
- Savage model M-25 cal .222 rem NEW IN BOX s# J227265
- Mossberg Patriot cal .375 ruger s# MPR137466
- Remington model 700 cal .243 win s# RR02914B
- Ruger model M77 Mark II cal .257 roberts s# 787-30600
- TIKA model T3 cal .204 ruger s# 623719
- TIKA model M695 cal .338 win s# 928542
- New England Arms .50 cal muzzle loader s# BP804947
- Savage model 24F cal .22 Hornet 20 ga s# F817776
- Mauser-Werke model 3000 cal .30-06 s# 84968
- Remington model 700 cal .22-250 Leupold VX3 6.5-20x40mm s# E6815901
- Browning model BLR LT WT 81 cal .270 wsm s# 06062MW341
- Remington model 700 cal .308 win s# G6307235
- CZ model 527 cal .22 Hornet s# 57975
- Savage-Anschutz cal .22 win mag s# 570699
- Browning model 81 BLR cal .223 rem/5.56mm s# 22670PV227 Pat No. 3377731
- Henry Lever cal .17 HMR s# V005235H
- Winchester model 88 cal .243 win s# 2070224
- Marlin model 882 SS cal .22 win mag s# 99399423
- Remington model IZH18MN cal .243 win s# 071844619R
- Remington model XR-100 cal .204 ruger s# 7810644
- Marlin model 1895M cal .450 Marlin s# 00055193
- Marlin model 336RC cal .30-30 Micro-groove s# R3223
- Ruger model Ninety-six cal .44 rem mag s# 640-16959
- SAIGA cal .308 s# 0008042
- Savage model 11 cal .22-250 rem s# J261588
- Browning model 81 BLR cal .22-250 rem s# 40946PX227 Pat No. 3377731
- New England Arms model SB2 10 ga s# NV296565
- Baikal over & under 12 ga s# 002744383B
- Ruger model M77 mark II cal .264 win mag s# 786-33157
- Thompson Center Contender cal .223 rem Burris 2-7x32mm s# 124979
- Thompson Center 30-30 win Super 14" barrel only
- Baikal Bounty Hunter II 16 ga side by side IN BOX s# 0038779B
- Baikal Bounty Hunter II 410 ga side by side IN BOX s# 0049892B
- Baikal model IZH-94 12 ga .223 rem IN BOX s# 009403106B
- Baikal Bounty Hunter II model IZH-43E-1C 20 ga SBS IN BOX s# 0031430B
- Baikal Bounty Hunter II model IZH-43E-1CH 12 ga SBS IN BOX s# 0038627B
- Baikal Bounty Hunter II model IZH-43E-1C 28 ga SBS IN BOX s# 0031198B
- Ruger Police Service-Six .357 mag s# 159-74781
- Harrington & Richards Premier .22 cal s# A48371
- Beretta model 950 B cal 6.35 s# B38963
- Hi-Standard model D cal .22 long rifle s# 7-639-6
- Smith & Wesson model 29-2 cal .44 mag s# N32357
- Baikal model IZH-35M cal .22 LR s# M039202B
- "J" #238 Chrome
- Colt Single Action Frontier Scout .22 mag s# 14672K
- P. Beretta s# 458770
- Marlin model 39-AS Original Golden cal .22 S.L. & LR s# 07255322
- Marlin model 39-A Original Golden cal .22 S.L. & LR s# 21250445
- Stevens model 987 cal .22 s# D885984
- Winchester model 74 cal .22 LR s# 274807A
- Remington model Nylon 66 cal .22 LR s# 2185415
- Springfield Stevens model 87A cal .22 LR Pat No. 2094577
- German Luger .9mm s# 8979
- Matching WWII holster, 2 clips, and cleaning tool. All matching numbers.
- North American Arms cal .22 mag
- Ten Point Crossbow

2018 POLARIS SIDE BY SIDE ONLY 130 MILES



Large assortment of reloading supplies, gun powder, and ammunition!



FOR MORE PICTURES SEE WWW.CHEYNEYAUCTIONS.COM

Auctioneer Note: This is a pristine, one owner collection of firearms. Many rare, hard to find, and new in box! Thanks, Travis



Cheyney Auction Company, LLC

Real Estate • Livestock • Farm & Ranch • Equipment • Household • Antiques

Travis Cheyney, Auctioneer

417-543-8751 • cheyneyauctions.com

ANNOUNCEMENTS Made Day Of Sale By Auctioneer Take Precedence over any Printed Matter. Not Responsible For Accidents.



ONLINE AUCTION

BID NOW! BIDDING CLOSSES NOVEMBER 5



540+ LOTS



Tractors & Construction Equip.

- '18 Kubota U35-4 excavator
- New Holland TS110 tractor w/ loader
- John Deere 5320 tractor w/ loader
- Kubota M6040 tractor w/ loader
- New Holland T6030 tractor
- New Holland TL90 tractor
- Mustang 2060 skid steer loader
- Bobcat 341 excavator
- Montana C6862 tractor
- IH 656 tractor
- Oliver 1800 w/ loader
- John Deere 401-A w/ loader
- AC 180 tractor w/ loader
- IH Farmall M tractor
- Ford 3400 tractor
- MF 150 tractor
- Ford 3000 tractor
- MF 135 tractor
- IH 460 utility tractor
- John Deere 50 tractor
- IH Farmall C tractor
- Ford 8N & 9N tractors
- Ferguson TO20 tractor
- Ford 601 tractor
- Ferguson TO35 tractor
- Ford 1120 tractor
- John Deere B tractor

UTVs

- Kubota RTV900 diesel
- Polaris Ranger HD 800 EFI
- Polaris Ranger XP 700 EFI
- Kawasaki Mule 3010 Trans Land Pride Trekker
- Nissan mini-truck
- JD Gator HPX 4x4

Trucks, Cars & RV

- '13 Ram 3500 4x4 flatbed
- '99 Airstream Cutter 35D motorcoach
- 2-Chevrolet C60 grain trucks
- '99 Kenworth T800B road tractor

- '92 IH road tractor
- '00 Ford F450 4x4 dump truck w/ snow plow
- '99 Ford F250 4x4 w/ snow plow
- '72 IH 1300A grain truck
- '59 GMC ladder fire truck
- '81 IH S1854 dump truck
- '86 Chevrolet C70 dump truck
- '09 Jeep Liberty 4x4
- '07, '02 & '99 Ford Explorer 4x4s
- '11 Chevrolet Traverse LT AWD
- '99 Ford F350 4x4
- '00 Dodge Dakota
- '05 & '00 Chevrolet Impalas
- '01 Volvo V70XC AWD
- '98 Ford Crown Victoria LX
- '93 Chevrolet 3500 4x4 flatbed
- '01 Chevrolet 3500 cargo van
- '03 Mercury Grand Marquis LS
- '86 Toyota Xtra Cab 4x4
- '93 GMC Sonoma
- '89 GMC 1500

Trailers

- Aluma-Line 20' gooseneck stock
- Ez-Haul side dump bale Featherlite 10' enclosed
- Pro-Stock 12' stock
- HP Trailers 20' tilt bed
- Big Tex 14ET flatbed
- Wilson DWH200 40' grain
- Great Dane 53' van
- Trailmobile 53' van
- Fruehauf 48' van
- Belshe 23' & 24' flatbed
- 20' tilt flatbed
- Big Tex 16' flatbed
- Doolittle 12' flatbed
- Doolittle 16'+4' gooseneck
- Palomino pop-up camper

Farm Equipment & Hay

- '16 NH H7230 discbine
- '15 NH Procart 819 hay rake
- 25' folding pasture harrow
- Woods 10' pull type brush hog
- JD 40 manure spreader
- JD 720 mower conditioner
- 2-NH 256 hay rakes
- NH 7' & 9' haybines
- Vermeer & Silawrap bale wrappers
- 2-NH 355 grinder mixers
- Westendorf WL24 QA loader
- Ford 7209 QA loader
- 100-4x5' bales of 2020 grass hay
- Portable feed cart

- Knight 180 manure spreader
- UFT grain cart
- Corral panel trailer w/ panels
- Woods FL 12' flail chopper
- Fransgard TL4000P rake/tedder
- Several hay & grain wagons
- JD 34 1-row silage chopper
- Squeeze chutes w/ headgate
- Several 1-row corn pickers
- JD 7000 4-row planter
- NH 202 manure spreader
- 1-5 bottom plows
- JD 343 4-row corn head
- NI 5403 9'2" disc mower
- Vicon CM247 7'10" disc mower
- 5'-8' grader blades
- 5'-7' 3-pt. brush hogs
- Bale unrollers
- Baumlight 3-pt. stump grinder
- 3-pt. post hole diggers
- Winco 35kw PTO generator
- JD, IH Ford & AC sickle mowers
- 5'-7.5' 3-pt. finish mowers
- Vassar skid steer tree shear
- Ber-Vac 3-pt. snowblower
- 3-pt. log splitter
- Bush Hog 3-pt. rollover box blade
- Transport grain augers
- Livestock feeders of all kinds

Boats, ATVs, Misc.

- Lowe 16' jon boat w/ motor & trailer
- Ingersol Rand 175 air compressor
- Fitchburg industrial wood chipper
- Honda tracked snow blower
- Yardman 42" cut riding mower
- Harley Davidson snowmobile
- Polar King 12'x30' walk in cooler
- Movable smokehouse
- Honda EU2000I generator
- Air compressors, gas & electric
- Power washers
- Garden tillers
- 11'-17' jon boats
- 8'x9' Rawson Koenig service body
- Mearelli grape crusher/de-stemmer
- Wheel & suitcase tractor weights
- Gates & corral panels

More items listed at SchneiderAuctioneers.com

Item Preview Dates:
 Saturday, October 24th (8AM-Noon), Sunday, November 1st (11AM-2PM),
 and Thursday, November 5th (8AM-5PM)

Item Preview Location:
4155 HWY V V, Berger, MO 63014



All items sell regardless of price. All items start at only \$1.



SCHNEIDER
Auctioneers LLC
 573-834-2207 • 573-291-8075
www.SchneiderAuctioneers.com

HUGE CHRISTMAS AUCTION

November 5th at 5:30 PM

TIME FOR CHRISTMAS SHOPPING!!!

HUGE CHRISTMAS AUCTION. DO YOUR CHRISTMAS SHOPPING NOW ALL KINDS OF GOODIES! WE HAVE TONS AND TONS OF TOYS! CREATIVE STARTER KIT, TOY STORY 4, REMOTE CONTROLLED CARS, FROZEN, DOLL HOUSES, PAW PATROL, LEGOS GALORE, STAR WARS, MARVEL, LEGO CITY AND MANY MORE, LEAP FROG, LOL SURPRISE DOLL HOUSE AND THIS IS JUST NAMING. FEW. OVER 80 TOY ITEMS, ALSO LOTS AND LOTS OF KITCHEN SMALL APPLIANCES. PIONEER WOMEN STUFF OF ALL SORTS SHAPES AND SIZES. VINTAGE BLOOM 12 PC SET, FLORAL TOASTER, FARMHOUSE LACE AND TONS MORE OVER 30 ITEMS IN PIONEER WOMAN STUFF !! ALSO POTS AND PANS, INSTA POTS, AIR FRYERS, MICROWAVES, 3.2 CU FT RGR REFRIGERATOR, SMALL GALANZ REFRIGERATOR AND MANY MORE, MAGIC CHEF 3.5 CU FT COMPACT DRYER, MAGIC CHEF COMPACT WASHER, ALSO HARD TO FIND CHEST FREEZERS, ARCTIC KING. CU FT, AND RGR 3.5 CU FT. HAMILTON BEACH ROASTER OVER, PRESTO ELECTRIC SKILLET, AND THE LIST GOES ON AND ON, LOTS OF CHRISTMAS DECOR INCLUDING TREES AND LIGHTS AND SANTA CLAUS HIMSELF! EXTENSION CORDS, AIR COMPRESSORS, HEATERS, BUDDY HEATER FOR THE DEER STAND, CROSSBOW, SCENT LOCK HUNTING CLOTHES, AND ALSO A FEW OTHER BRANDS, LEATHER COUCHES, WHITE DRESSER, BETTER HOMES FARMHOUSE LEISURE PATIO SET, AND SOME MORE ODDS AND ENDS. FURNITURE AND PATIO SETS TO BE ADDED, OH AND LET'S NOT FORGET THE GRILLS! 36" BLACKSTONE GRIDDLE. GAS GRILLS, TRAGER PELLET GRILL, PIT BOSS PELLET GRILL, AND LET'S NOT FORGET THE KIDS BIKES AND FEW RIDEONS, ALSO WE WILL HAVE SOME AWESOME ELECTRONIC ITEMS INCLUDING OCULUS VR HEADSET, XBOX, GAMES, LAPTOPS AND WHOLE LOT OF AWESOME CHRISTMAS ITEMS. FOLKS THIS AUCTION IS LOADED WITH LOT OF SMALLER ITEMS WE MAY NOT HAVE AS MANY BIG ITEMS THIS TIME AROUND BUT WHAT'S HERE IS QUALITY, AWESOME MOSTLY, BRAND NEW ITEMS! COME AND JOIN US. WE WILL HAVE SOME DOOR PRIZES AS WELL. SEE YOU THEN!

ALSO A FEW KAYAKS AND AN ALL POWER PROPANE 6000W GENERATOR!



Auction terms: Cash, Good Check or Credit Card. Not responsible for accidents. Announcements day of sale take precedence over printed matter.

Shetler
Auctions

Check out www.shetlerauctions.com for more pictures



417-254-4090



shetlerauctions@gmail.com

www.shetlerauctions.com

Shetler Auctions LLC

3099 Hwy. 95

Mtn. Grove, MO 65711



Wheeler Livestock Auction, Inc.

Special Stock Cow Sale



SAT., OCT. 31, 2020 • 6:00 P.M.

Expecting 800 head of bred heifers, cows, cow/calf pairs & breeding bulls
Many consignments are due to drought conditions

Bracher Farms-

- 4 PB Ang bulls, 20 mos., 1,400 lbs., Bred for growth, good gentle bulls.

Peterman Farms-

- 1 Red Sim Ang bull, 3 yrs., 1,600 lbs., good gentle growth bull.

Crooks Springs Farms-

- 1 Red Bal Bull, 30 mos., 1,500 lbs., Judd Ranch bull.

End of the Road Red Angus-

- 1 Red Ang Bull, 30 mos., 1,500 lbs., 4 out of 5 Star Fescue Tolerant, good genetics

St. Clair Beefmasters-

- 2 PB Bfmstr bulls, 18 mos., LBW hfr. bulls. 2 ½ Bfmstr ½ Ang bulls, 15 mos. 1 Red & 1 Blk

Larry DeGraffenreid-

- 3 Red Ang bulls, 18 mos., 1,400 lbs., good gentle bulls.

Grier Farms-

- 3 Yllw Char bulls, ½ RA ½ Char, 1,500 lbs., 2 yrs., 4 Red Ang bulls, 1,500 lbs., 2 yrs., 4 Red Sim
- Ang bulls, 1,500 lbs., 2 yrs., 1 Blk Ang bull, 1,500 lbs., 2 yr. All bulls big 2 yr old bulls, grown on grass.

Adren Stockton-

- 4 PB Char bulls, 2 yrs., 1,200 lbs., 1 PB Herf. bull, 1,200 lbs., good bulls grown on grass.

Hoeme Farms-

- 1 Blk Gelv. Bull, 3 yrs., good growth bull

Day Farms-

- 1 Blk Sim Ang bull, 4 yrs., 1,500 lbs., Lucas breeding, 1 Sim Ang bull, 4 yrs.,

Jimmy Sanders-

- 25 Fancy Ang pairs, 2 yrs., clvs. 1 mo. old., 30 Fancy Ang hfrs., bred 3rd to Ang bull. All hfrs are Gardner Ranch Genetics. Steer mates graded 100% choice, 57% prime. Fancy Hfrs., Complete Vac program.

Mills Farm-

- 30 Fancy Ang hfrs., 2 yrs., 1,150 lbs., 15 Smokey Grey Char X hfrs., 1,150 lbs., 2 yrs., The above 45 hfrs. All Bred to Ang CE bull. All 4-22-20, due 1-30-21

Glorr Farms-

- 3 Gelv-Bfmstr X cows, 3 yrs., 1,250 lbs., w/ Hawk Angus sired calves 200 lbs.,

Coale Farms-

- 14 Blk hfrs., 800 lbs., Hfrs. are open, all home raised, outstanding set of replacement hfrs. Sired by Gaffney Angus bulls.

TEK Farms-

- 10 Red & RWF hfrs., 2 yrs., 1,100 lbs., w/ fall born clvs. 5 Blk hfrs., 2 yrs., 1,100 lbs., w/ Blk fall born clvs. 5 Mix cows, 7-SS, 1,200 lbs., w/ fall born clvs.

Rusty Post Angus-

- 7 Reg Ang cows, 3-8 yrs., 1,250 lbs., w/ Sept. clvs. Calves can be registered, cows selling open.

Matlock Farm-

- 12 Fancy Red Ang cows, 3-6 yrs., 1,250 lbs., bred 3rd to Herf bull.

Jim Smith Complete Dispersal-

- 35 Blk cows, 5-7 yrs., 1,250 lbs., 20 BWF cows, 6 yrs., 1,250 lbs., The above 55 cows have 30 Ang clvs., up to 300 lbs., Rest bred Ang bull. 1 Blk Ang bull, 3 yrs., 1,400 lbs.,

Minks Farm-

- 14 good Red Ang X cows, 3-5 yrs., 1,300 lbs., w/ 7 clvs. rest bred 3rd to Red or Char bulls.

Mayberry Farms-

- 25 Blk cows, 3-4 yrs., 1,050 lbs., w/ clvs. up to 300 lbs., 10 Blk cows, 3-4 yrs., bred 3rd. This is a real nice set of young cows w/ outstanding set of calves. Cows will all be open selling due to health reasons and weather conditions.

Wheeler Farms-

- 28 Fancy Brangus cows, 5 yrs., 1,300 lbs., Bred 2nd & 3rd to Brangus or Horn Herf bulls, Good gentle cows, had all shots & good calf raisers.

L & T Farms-

- 20 BWF cows, 4-6 yrs., 1,200 lbs., w/ 20 BWF clvs. up to 300 lbs.,

S & P Farms-

- 17 Blk Ang cows, 5-7 yrs., 1,300 lbs., w/ 5 Ang clvs. up to 200 lbs., Rest of cows bred 3rd to Ang bull. 1 Ang bull, 4 yrs., 1,600 lbs.

Rushing Farm-

- 35 good Blk & Red Ang cows, 5-7 yrs., 1,200 lbs., w/ 22 clvs. up to 300 lbs., Rest cows bred 3rd to Ang bull.

S & G Farm Dispersal-

- 40 Blk cows, 4-6 yrs., 1,300 lbs., 40 Red & Char cows, 4-6 yrs., 1,300 lbs., 40 Mix cows, 5-BM, 1,300 lbs. The above 120 cows sold calves off of here Oct. 1st. Cows bred to Char or Ang bulls, had all shots. Selling due to drought conditions.

Tom Garver-

- 7 Char X cows, 3-6 yrs., 1,200 lbs., w/ 7 Char X clvs., 200 lbs.

Terry Bond Complete Dispersal-

- 22 Mix cows, Blk & Char X, 4-BM, 1,250 w/ 18 Ang clvs. up to 400 lbs. Cows will be bred back to good Ang bull.

Bill Allinson-

- 8 Blk cows, 3-6 yrs., 1,200 lbs., bred 2nd to Seedstock Plus bulls, 4 Blk hfrs., 2 yrs., 1,000 lbs. Bred 2nd to Seedstock Plus bulls.

Winters Farm-

- 13 mix cows, 6-BM, 1,300 lbs., bred 2nd & 3rd to Blk Ang bulls.

Seedstock Plus Red Reward Sale - November 7th • Special Wean Vac Sales - November 5th & 19th • November Cow Sale - November 28th



Wheeler Livestock Auction, Inc.

Osceola, MO • 685 SE 13 Hwy., PO Box 560 • BARN 417-646-8102

Byron Wheeler-417-777-0897 • Austin Shelby-417-309-1350
 Darwin Hearting-417-296-1029 • Charlie Proctor-417-326-9467 • Kevin Wade-660-492-3279
 Tim Sherrer 573-855-1951 • Burleigh Wheeler-417-840-6561 • Skyler Fisher-417-298-9051
 Les Tennis-417-466-8786 • Red Whistance 417-276-7909

Office Manager: Weston Shelby, 417-298-1316

Bid online on CattleUSA • www.wheelerlivestock.com

Like us on Facebook-Wheeler Livestock Auction

Auction Coming Soon!



Saturday, October 31, 2020--10:30 AM

Directions: Take highway 17 south of Summersville, MO and turn left on WW highway. Take WW east 3.2 miles to the auction on the right at 2958 hwy WW, Summersville, MO.



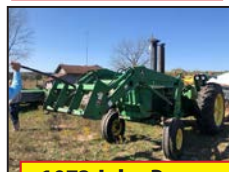
916 John Deere MOCO cutter



1989 18 ft. flatbed bumper-pull trailer



1981 2440 JOHN DEERE 70HP, 9063 HOURS W/ 146 JD LOADER, BRAND NEW HYDRAULICS, BUCKET AND SPIKE



1972 John Deere 4320 118 hp, rebuilt motor showing 5767 hours, w/ 725 JD loader, bucket, spike, quick attach, new batteries, new battery boxes

BUILDING SUPPLIES: Lattice; 3 bundles Heritage shingles; Roll of coated #4 wire; Tin
FARM ITEMS 22 ton Swisher wood splitter; Buckets, Lariat ropes; Plastic barrels; Mineral tubs; 2 hydraulic cylinders; T-post driver; 2 feed bunks; 3 plastic hay rings; 2 metal hay rings; 7 ft. T-posts; Loader tires; Treated runner; Red Brand woven wire; Metal pipe; Angle iron; Heat lamp
TACK: Aluminum saddle racks; Saddle stands
FURNITURE: Couch and loveseat w/ recliners on both ends; Coffee table; End tables; Rolltop desk; Oak desk chair; Oak table w/ chairs and bench; 2 oak bar stools; Baker's rack; Queen sleigh bed w/ night stand, dresser, and chest of drawers
SHOP ITEMS: Trucker's Rand; McNally GPS, Gas cans; 90 weight oil pump; Hand tools; Framing square; New air hose; Victor torch w/ gauges; Skil Saw, 2 mufflers; DeWalt chop saw; 2 floor jacks; Shop Vac; Titan power washer; Shop lights; Dbl. halogen light stand; 1000# engine stand; Rolling metal cart; 10" random orbital buffer; Electric cords; Peg board hangers; U-bolts, Vise; Battery-operated grease gun; Metal shop stools; Metal shelving; Miter box; Drill Doctor drill bit sharpener Load lock; Cant hook; Brace & bit; Chains; 6' aluminum step ladder; Metal shop table; 4" straps, Jigsaw; 1/2" DeWalt hammer drill; Black & Decker hammer drill; Ingersoll airgun; Deep well 1/2" impact sockets
OUTDOOR ITEMS: Okuma reel; Daiwa fly rod; ATV gun scabbard bracket; Archery target; Bow case; 6-person Coleman tent; Ice chests; Schwinn 7-speed bicycle; Fishing tackle; CB radio; Marine radio; Coleman lanterns; Crawfish trap; Igloo water coolers; Clay pigeons; Fishing rods/reels; Deer stand
HOUSEHOLD ITEMS: Christmas tree and decorations; Stereo w/ 5 CD changer and cassette player; Small propane stove; TV, Sony sound system; DVD player; Decoratives; Toaster; Utensils, dishes; Pots, pans; Fruit jars; Cookbooks, Linens; Cleaning supplies; Shark cordless vac; Step stool
LAWN AND GARDEN ITEMS: Post hole digger; Axes; Shovels; Rakes; Lawn tools; Monster maul; Clothesline poles; ATV sprayer; Pallets; Cedar adirondack chairs; Deck/home sprayer; Walnut picker; Punch bar; Hoes; Pitchfork; Post maul; Martin houses; BBQ grill
IMPLEMENTS: Rhino SPHD auger--like new; Carbide auger tips; Blade, Top links; Hydraulic hay unroller; 3 pt. 7 ft. brush hog; 14' Taylorway disc; 15" BMB batwing; brush hog Field roller; 3 pt. John Deere brush hog for parts, Seeder; Winch bale spike
COLLECTIBLES: Alvarez guitar in dehumidifier case; 1939 Ford Deluxe model car; Center caps for 80's Chevy 4x4; St. Louis sad iron & rivet; Racing items.



OWNER: DARYL BELL

Auctioneer's note: Due to having sold his farm, we will sell at public auction Daryl's farm and home items. Daryl's equipment has been taken care of and is ready to be used. If you are in need of farm equipment, tools, or nice furniture, come see us at this auction! Thanks! Dennis, Heath, and Matt



Newby's Auction Service and Appraisal

Auctioneers: Dennis Newby Heath Newby Matt Hill Appraiser: Heather Hill

417-247-1950 417-247-1295 931-703-4878 417-247-7014

Email us at: newbysauctionservice@live.com Visit our website: www.newbysauctionservice.com

Cash, approved check, or credit/debit cards accepted--3% convenience fee added to credit/debit payment.

Not responsible for theft and/or accidents

Need an auction? Call us! We appreciate your business!



REAL ESTATE & ESTATE AUCTION

Saturday, October 31st, 2020 ~ 10:00 AM

LOCATION: 283 Northwest 36th Lane, Lamar, MO; Directions: From Lamar Go North On I49/71 Hwy To DD/EE Exit Or Known As Dump Road Then Go East On DD Hwy Approx 3 1/2 Miles To Northwest 36th Lane Then South To Sale Site (Watch For Signs)

Auction For David Kleeman Estate



Real Estate Sells First At 10:00 AM

Real Estate Consists Of Home Built Over Garage To Inc 1 Bedroom, 1 Bath/ Utility Room, Has Kitchen, Dining & Living Rooms. Home Has Outside Heat Stove As Well As Split Wall Air & Heat, 2 Large Closets, Which Was Stated Before Living Area On Top Of Garage Area. Garage Consists Of Over Size 2 Car Garage With Floor Heat, Bathroom & Large Working Area. Also Has Hot Tub In Garage. Home Is Setting On Approx 5 Acres M/L With Some Timber With Plenty Of Deer & Turkey. Deck Built Upstairs With Roof & Under Deck Is Perfect For RV Parking Area. This Would Make A Great Home For Bachelor Or Young Couple. To Preview Contact Bill At 417-214-0093. Terms: 10% Down Day Of Sale With Signed Contract And Balance Due In 45 Days Or When Closing Date Set By Abstract Office. Seller Has The Right To Accept Or Reject Any And All Bids.

Antique, Modern Furniture & Appliances, Also Antiques, Collectibles, Households, Also Lots Of Coca Cola & Beer Advertising Memorabilia

Ant Oak Kitchen Cabinet, Ant Oak Square Table, Ant Dresser W/Mirror, 2 Ant Chest Of Drawers, Sm ant Pic Safe, 2 Ant Rocking Chairs, Ant Child's Chairs, Ant Cedar Chest, Ant Kitchen Table, Ant Kitchen Chairs, Ant Barstools, Ant Cast Iron Military Sink, Some Prim Furniture, Retro Lamps, Cabinets, Stand Up Oak Wood Mirror, Nightstands, Queen Size Bed, Roll Top Desk, Magazine Table, End & Coffee Tables, Matching Couch, Chair & Loveseat, Recliners, Entertainment Center, Quilt Rack, Sewing Machine In Cabinet, Treadmill, Retro Stereo, A/C Unit, GE Flat Top Electric Cook Stove, Portable Dishwasher, Refrigerator, 15 Cu Ft Chest Deep Freeze, Kenmore Washer & Electric Dryer, Very Lg Lot Of Coca Cola Memorabilia Inc 5 Ft Store Cooler, Tins, Bottles, Glass Pcs, & Knick Knacks, Lg Lot Of Beer Signs & Memorabilia, Several Are Metal, Neon & Unusual, Lg Lot Of Racing Memorabilia Of Several Different Drivers, Old Baskets Inc Longaberger Baskets, Old Oil Lamps, Crock Jugs, Ant Kerosene Heater, Old Cream Cans, Ant Pitcher Pump, Old Linens Inc Quilts, 2 Ant Silver Sets In Boxes, Ant School Desk Sides, Some Old Jewelry, Old Glassware Of Various Kinds, Pink Depression Glass, Old China Set, Lot Of Old Knick Knacks Of Various Kinds, KC Chiefs Items, Lg Lot Of Christmas Décor Some Old, Some New, VHS & DVDs, Other Items Not Listed

Car, Boat, Storage Building, 4-Wheeler, Log Splitter, Golf Cart, Welder, Shop

Tools & Outdoor Related Items

1995 Ford XLT 4x4 Explorer Fully Loaded W/Auto Trans, V6 Motor, Miles Unknown, 16 Ft Boat W/Trailer, Trolling Motor, & Mercury 40 Motor, 2 Car Carport, 10x12 Portable Storage Building, 1995 Kawasaki Bayou 320 Four-Wheeler, Pull Behind Bush Hog GT42 Mower, Gas Powered Portable Log Splitter, Electric Golf Cart, Weed Eater Rear Tine Tiller, Gas Generator, Miller M180 Welder, Pressure Washer, Husqvarna 351 Chainsaw, Shop Vac, Roll Around Shop Work Shelf Cage W/Locking Hasp, Heavy Duty Shop Shelves, Shop Stools, Roll Around Toolboxes, Heavy Duty Shop Tables, Welding Table, Sm Electric Tools Major Brands, Sm Hand Tools Major Brands, Air Tools, Battery Operated Tools, Jump Start, Battery Charger, Scroll Saw, Router, Wood Clamps, Sand Blaster, Organizers, Ladders, Log Chains, Long Handle Tools, Creeper, Electric & Plumbing Supplies, Dolly, Yard Utility Dump Cart, Sm Windmill, Yard Swing, Picnic Table, Patio Furniture, BBQ Grill, Other Items Not Listed

Guns, Ammo, Hunting, Fishing & Camping Related Items

New Savage Bolt Action 30-06 W/Scope, Rem Mod 742 Woodmaster Semi Auto 30-06, New Rossi Stainless Lever Action 44 Mag, Two NIB Ruger 10/22's, Ruger Black Synthetic & Stainless 10/22, Crossman Mod 160 Pellet 22 Cal Rifle, Mossberg Mod 590DA Police Magnum 12 Ga Shotgun, New Mossberg Mod 500 Pump 410 Shotgun, Nice Rem 12 Ga Semi Auto Shotgun, Ruger Mod SR1911 Stainless Semi Auto Pistol, Kimber Mod SIS Pro 45 Auto Pistol W/5 Clips, Comp Trigger, Night Sights & Special Grips, Spfld Sub Compact Mod 2 XD Camo 45 Auto Pistol, Spfld XD 40 Cal Pistol, Two NIB Taurus Mod G2C Semi Auto 9mm Pistols, Tristar/Canik Mod C100 Semi Auto 9mm Pistol W/CZ Rubber Grips, Sig Sauer Mod SP2022 Semi Auto 9mm Pistol W/4 Clips, NIB SCCY Arms 9mm Semi Auto Pistol, New CZ Mod 75 Compact D Semi Auto 9mm Luger, NIB Heritage Rough Rider 22/22 Mag Combo, Heritage Collector Series Liberty Belle 22 Pistol, Ruger Mod GP100 Blue 357 Mag Revolver, Ruger Mod GP100 Stainless 357 Mag Revolver, Rossi Blue 38 Special 5 Shot Revolver, High Standard Mod Sports King Semi Auto 22 LR, Over 10,000 Rounds Of Ammo Of Various Kinds Inc 9mm, 44, 357, 10mm, 380, 32, 45, 22, 7.62x39, 243, 30-06, 270, 308, & Others, Some Gun Supplies, Reloader & Supplies, Gun Cabinet, Shooting Clays, Camping Supplies, Lots Of Fishing Poles & Supplies, Some Old & Some New, Other Items Not Listed

Auctioneers Note: It Is An Honor To Be Conducting This Auction For The Kleeman Family As We Have Known Each Other For Many Years. David Was An Avid Collector Of Racing, Beer Memorabilia, Coca Cola & Antique Pcs. Tools Are Excellent & In Working Order. Good Car, Boat, Building, Carport & Large Items As Well. Most Guns Are New In Box Or Never Fired. Great Selection Of Ammo, Fishing & Camping Related Items. This Is An Auction That Has Something For Everyone. Please Plan Now To Attend. **Sale Order:** Real Estate Will Sell First Followed By Antique & Modern Furniture, & Appliances Then Move Into Antiques, Collectibles, Households. At Approx 1:00 PM Will Offer Car, Boat, Building, Carport, & Large Items. At Approx 1:30 PM Will Offer Guns, Ammo, & Outdoor Related Items. Remainder Of Tools & Outdoor Will Finish Auction. See Ya There!!!

Terms: Cash or check with proper ID. Now accepting most major credit cards. Nothing removed until settled for. Statements made the day of sale takes precedence over printed material. Everything sold as is where is. Not responsible for accidents. Restroom available. Concessions Provided. Check our website for upcoming auctions and for additional pictures!!!



NANCE AUCTION SERVICE

No Matter How BIG or small, We Do Them All!

www.nanceauctionservice.com

Col. Bill Nance 417-214-0093

In God We Trust

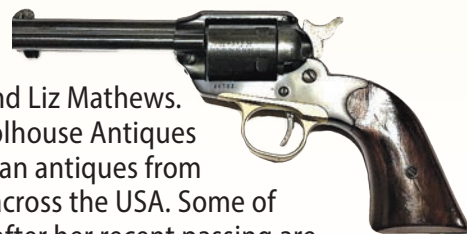
Philippians 4:13

R&R AUCTION SERVICE

ABSOLUTE AUCTION

SATURDAY NOVEMBER 7TH • 9AM

314 N. Holly, Buffalo, MO • LIZ MATHEWS ESTATE



For those of you who are in the Antique business you probably already know the names of Chet and Liz Mathews. They were owners of Charity Schoolhouse Antiques since 1976. The magnificent Victorian antiques from their collection were sought after across the USA. Some of those pieces were kept by Liz and after her recent passing are now being sold in this complete dispersal auction.

Real Estate will be sold at 12 noon.

Set in the prime elite neighborhood of Holly Drive, this huge house hardwood floors, antique and custom light fixtures (notice pics in gallery), 3 bedrooms and 2 baths upstairs, with large living room, kitchen, dining, utility, and 2 car garage. Downstairs is a walk out that offers another bathroom, bedroom, giant family area, plus a shop area and storm shelter. Built in back up generator, It has a large back yard, beautiful trees and landscape. Other items in this colossal estate include a very large amount of jewelry, Gold coins, Silver, Turquoise, Antiques, collectibles, Cars, guns, and an all around exquisite plethora of merchandise that you have to see to believe. View our Website <http://www.rrauctionservice.com> for a complete listing and hundreds of pictures. And be sure to watch next weeks trader for a full listing.



Fine Furniture, Tools, Collectibles and so much more!

TERMS: Cash, check, or credit card with proper I.D. nothing removed until settled for A 3% fee will be added to credit card purchases. Not responsible for errors in listing. Any announcement made sale night will take precedence over any printed matter. **Note:** Service will take every precaution to prevent accidents, but will not be responsible should any occur.



For more information contact Professional Auctioneer Russ Weeks at 417-576-7357 or check out www.rrauctionservice.com

Serving this area's auction needs since 1997 with honesty and professionalism.
www.rrauctionservice.com
(417) 576-7357 or (417) 345-4140



R&R AUCTION SERVICE

MOVING AUCTION SATURDAY OCTOBER 31ST • 9AM 4747 S. 207th Road, Halfway, MO (Van Town)



This beautiful 4 bedroom, 2 1/2 bath house with 3 car garage and 4500 square feet on 2.35 acres, has in ground pool (needs relined), coy pond, 4 sky lights and 2 concrete pads. Built with 2x10 outside walls and 2x6 inside walls. Ground source heat and air and Heat pump for level 3. Will be offered at noon. Sold subject to seller approval.

Other items include but are not limited to...Computer Desk, Glass shelves, Carved wood plant stand, Metal plant stand, Bookshelf, Trunk look furniture, Crosscut saws, Motorcycle helmets, Giraffe lamp, Brown leather recliner sofa, Gun cabinet, Hand pump, Wood churn (needs paddles), Leather recliner, Sewing box, Coffee table, Kawaii organ, Ottoman, Glass top dining table and 6 chairs, Disney glasses, Nesting bowls, China, Kenmore sewing machine, Tea carts, Books, VHS, DVDs, Bear welcome sign, quilt rack, Vintage Monopoly game in wood box, Dog - opoly, Farm - opoly, Springfield monopoly, Mickey Mouse Monopoly 75th anniversary collectors edition (never opened), Pictures, Wooden elephant, Wooden giraffe, Triangular stool from Africa, Pinnacle cast iron, Half moon shaped table, Sconces, Ceramic figurines and ducks, Office chair, Well pulley, Ice tongs, Roll top desk, Hanson scale, Piano light, Draw knife, Rug, Faux flowers and plants, Fold up ladder, Old clock (H10BS), Plane, Sony stereo Bose speakers gaming table, Glass top round and small tables, Mitsubishi Projector TV, Globe, Old wall table, Several end tables, Oil lamps, Dartboard, Patio table, Collectible Santa and Bear Dior, Lufkin vernier height gauge, Hand forged steel and oak stool, Cuckoo clock, Mini corner shelf, Antique humidior, Large oak computer desk, Queen size sleigh bed, Entertainment center, Magazine stand, Complete wall entertainment console, Leather sectional, Plastic waterfall, Craftsman tool box, Kennedy tool box, Plastic shelving, Bits, Measuring tools, Sharpening stones, Punches, Sterret drive pin punches, Xacto set, Pruners, EZ mig welder 101/1, Toy semi, Black and Decker corded and cordless drills, Misc. wrenches, Vise, Karaoke machine, Kwik grip clamps, Screwdrivers, Pliers, Instant bed in a bag, Hammers, Milwaukee mitre saw 10", Toy cars, Pencil sharpeners, File cabinet, Step ladder, Couch and loveseat, Palm sanders, John Deere 6.75 push mower with bagger, Craftsman 11 hp power washer, Craftsman air compressor, Cream separator, Hand tools, Bicycles, Stihl chain saw MS290, Echo chain saw 08-8000, Black and Decker Sawsall Firestorm, Trains and accessories, Singer Cabinet sewing machine, Weider compact gym exercise machine, Milwaukee angle grinder, BBQ grill and smoker, Basket Ball goal, Christmas stuff, Sulky Rake (Jones), Trailer, Blade, 6 ft disc, t posts, carry all, bale spike, barbed wire, cattle panel, EZ go golf cart, Craftsman 18" dual direction , rear tine tiller, Saddle, Generator, Pitch fork, Gas cans, 200 amp breaker box, barrel, Kids outdoor furniture, Halters, Lead ropes, Bridles, Tony Little Gazelle sprint master exerciser, Tool boxes, Terra Force 3 pt, Big plants, and much much more!



TERMS: Cash, check, or credit card with proper I.D. nothing removed until settled for A 3% fee will be added to credit card purchases. Not responsible for errors in listing. Any announcement made sale night will take precedence over any printed matter. **Note:** Service will take every precaution to prevent accidents, but will not be responsible should any occur.

GENERAL AUCTIONEERS

Auction & Appraisals

RAUCTION SERVICE

For more information contact Professional Auctioneer Russ Weeks at 417-576-7357 or check out www.rrauctionservice.com

Serving this area's auction needs since 1997 with honesty and professionalism.
www.rrauctionservice.com
(417) 576-7357 or (417) 345-4140



VISIT WEBSITE FOR PICTURES

ESTATE AUCTION

REAL ESTATE ~ ANTIQUES & COLLECTIBLES ~ HOUSEHOLD ~ SHOP ITEMS ~ OUTDOOR ~ FARM EQUIP

SATURDAY, OCTOBER 31ST- 10:00 A.M.

Location: Rt 61, Box 77, Macomb, MO **Directions:** From 4 Way Stop in Norwood take Hwy C go approx 4 miles to Hwy YY on right. Go approx 2.8 miles to Auction. **WATCH FOR CHADWELL AUCTION SIGNS.**
Payment System: Cash • Debit Card • Credit Card (Debit / Credit Card Fee Will Apply) Checks approved if known by auction company. **VISIT: WWW.CHADWELLAUCTIONS.COM**

Estate Paul & Darlene LaDUKE

REAL ESTATE ~ SELLS AT NOON



160 acres m/l. Land features 3 Hayfields and 3 ponds. Two Springs run on the farm year round. This Property has the Old Hickory Flat Trading Post Building standing. Also has a 1200 sq ft cabin and offers eight outbuildings of various sizes. This is excellent hunting property. Call Shawn for showing 417-830-0209 **SHOWN BY APPOINTMENT ONLY** **TERMS:** 10% down day of auction, balance due at closing. Closing costs split, taxes prorated.

25 TON MTD WOOD SPLITTER (Like New) TRACTORS



Kioti LK 2554 w/Rhino Loader 8spd ho lo joystick loader 540PTO 139hrs • 900 Ford 4spd (gas) • 350 International Farmall (does not run) • F 12 Farmall (non running) • B Farmall

7 LAYING HENS

HOUSEHOLD

Dishes • Cutlery • Walnut China Hutch • Large Lot Pressure Cookers • Wooden Cabinet • Other

2015 LAND MASTER ML400 SIDE BY SIDE 2 SPEED AUTOMATIC

VEHICLES ~ 4 WHEELER ~ TRAILERS

2005 Suzuki Quad Runner 4x4 w/wench • 4'X6' Homemade Trailer • 6' x 7' 2 Wheel Trailer • Kawasaki Bayou 220 4 Wheeler (needs work) • 1979 S-10 5spd (needs work) • 2003 S-10 5spd (needs clutch) • 1994 Oldsmobile Achieva 4 door Auto (needs work) • 1994 Ford Taurus (needs windshield) • 2005 Chrysler Sebring Convertible (needs battery) • 1952 GMC 1.5 ton Flatbed 2 sp axle • 1970s Step Van (storage only) • 1951 Chevy 1/2 ton (restorable) • Other

AUCTIONEER'S NOTE: Paul & Darlene lived on the farm for 70 years. Lots of antiques and hidden treasures! **Thanks, Shawn**

DRIVER'S LICENSE OR PICTURE I.D. REQUIRED • TERMS: CASH OR APPROVED CHECK **OR**

www.chadwellauctions.com

Auctioneer:
SHAWN CHADWELL
 417-746-4038 ~ Cell: 417-830-0209

Clerk:
SHELLY CHADWELL
 Cell: 417-880-8449

Ringmen:
 John Williams Jr. ~ 417-349-0480
 Weston Chadwell ~ 417-349-0727

Cashiers:
 Shawn Irby • Marla Chadwell
 Kati Roberts • Emily Chadwell

PROFESSIONAL SALES MANAGEMENT
 LUNCH WAGON • APPRAISAL SERVICE • RAIN OR SHINE
 All announcements made day of sale take precedence over any printed matter.
 Not responsible for lost or stolen merchandise. Not responsible for accidents.

FARM EQUIP. ~ FARM RELATED

Buckets • Rope Fence Stretchers • Pickup Stock Racks • Large Lot Metal Barrels • Woven Wire • Fence Posts • 3pt Land Pride • 5' Angle Blade • Hand Tools • Wheel Barrows • 16' Cattle Panel • 16' Hog Panels • Holden Fence Chargers • 10' Wooden Gates • 8' Wooden Gates • Hog Feeders • 268 NH Square Hay Baler • 3PT Sickle Mower • Horse Drawn Cultivator • 5' Drag Type Brushhog • ATV Sprayer • 2 Wheel Pony Cart • 4 Wheel 2 Horse Rubber Tire Wagon w/brakes • A&C Corn Mill Grinder • Other



ANTIQUES & COLLECTIBLES

Standard Computing Scale Co Scales • Double Wash Vat • Wagon Wheel Bench • Milk Jars • Cow Bells • Milk Cans • Large Cast Iron Collection (lodge, gristmill, & wagner) • Very Old Barbed Wire • Blue Mason Jars • Crock Rabbit Feeder • Assorted Wash Tubs • Large Lot of Push Plows • Well Pulleys • Oil Cans • Large Lot of Cream Cans • Iron Wheels • Horse Drawn Disc • Whiskey Barrel • Wooden Ladders • Wooden Rabbit Traps • Hay Hooks • Saddle Harness Collars • Wooden Chairs • (2) Cast Iron • Bean Pot on Stands • Wooden Wringer Washer • Pull Type Manure Spreader • Homemade Cider Press • Granite • Ringer Washer • Bow Saw • Antique Mop Bucket • Feed Cart • 2 Man Cross Cut Saw • Single Trees • Double Trees • USA • Correll • Firing King • Sad Irons • Well Buckets • Crockery • Barrel Chairs • Glass Marbles • Deer Horns • Warming Oven Cook Stove • Royal Wood Heat Stove • Other



SHOP ITEMS

Central Machine 14x40 Wood Lathe (like new) • Homemade 2 Wheel Dolly • Metal Cart on Castors • Ratchet Straps • Car Ramps • Dremmel Moto Jigsaw • Roller Stands • Baker EZ Bandsaw • Saw Mill 16hp motor • Rock Well Drill • Bolt Cutters • Craftsman Arc Welder • Chicago Mig Welder • Air Tank • Craftsman Drill Press • Hunter 8' Step Ladder • Fuel Cans • Other



OUTDOOR ~ MISCELLANEOUS

2 Stihl 025 Chain Saws • Approx 2000' Walnut Lumber • Large Lot Assorted Lumber • Dog House • Stainless Steel Vat • Large Lot Canning Jars • Live Traps • Murray 10hp Chipper/Shredder (like new) • Weed Trimmer • Horse tack • Yard Cart • Husqvarna Chain Saw • Large Lot Hand Tools • 3PT King Cutter Roto Tiller • Camping Stove • Other

GUNS

Newport 12 gauge Bolt Action • Remington Model 572 Pump 22 Tube Fed • WesternField 16 gauge 2 3/4 Bolt Action • Marlin Model 60 22 Auto • 410 Bolt Action New Haven • Winchester 30-30 • Assorted Ammo • Pellet Gun • 22Mag Heritage Rough Rider • Ammo Boxes • Marlin 22 Auto • Foremost New Haven 22 Long Rifle w/ Gold Trigger & Tasco 7x20 Scope



Saturday, October 31, 2020 • 9:00 a.m.

LOCATION: In Salem, Mo., at Jct. of Hwy. 32 and Hwy. 72, take Hwy. 72 west to Co. Rd. 3210, at the end of Co. Rd. 3210, turn right and then a quick right onto Co. Rd. 3220. Watch for signs.

Go to auctionzip.com to view photos. Auctioneer #28367

Tractor, Equipment, Farming, Supplies

4-wheeler
 Massey-Ferguson 35 tractor
 King Kutter box blade, 5-ft.
 King Kutter blade, 6-ft.
 Brush hog, 5-ft.
 Flat bed trailer, 12-ft.
 4 x 8 trailer
 Truck bed trailers
 Honda Recon ES 4-wheeler
 6 x 8 trailer
 3 pt. ripper
 3 pt. auger
 3 pt. bale spike
 Horse drawn 2-bottom plow
 Horse drawn mowing machine
 3 pt. hitch boom pole
 Craftsman plow
 3 pt. carryall
 12v winches, new
 Bench top log splitter
 Truck bed load unloader
 Stock tanks
 Heavy gates
 Solar charger
 Tee posts
 Mineral feeders
 Well pipe
 1-1/4 water pipe
 250-gal. Water tanks
 Cultivator
 12 round bales
 Electric fence post & fence unroller
 Gate hangers
 Barbwire unroller
 Post driver
 Tee post puller
 Fence stretcher
 Draw bar

Tools, Yard, Garden

DeWalt 4-inch grinder
 Port Cable sawzall
 Generator-Predator 4000 watt
 Air compressor
 Generator-Power Mate 5400 watt
 Generator-Briggs & Stratton 5500 watt
 Generator-900 watt
 Kolbot 30-gallon air compressor
 Honda power washer 3100 psi, new
 Cub Cadet snow blower
 Radial arm saw • Drill press
 Compound mitre saw with stand

Mig wire welder
 Lincoln arc welder 225
 Craftsman 20-gallon air compressor
 100-lb. propane tank
 Stihl MS 170, Stihl MS 310, & Stihl MS 171 chainsaws
 Stihl FS 250 weed eater
 Power washer 2500 psi
 Yard cart 17-cu. ft.
 3-wheel cart
 Propane torch
 Metal welding table
 Radial arm saw 10-in.
 Concrete mixer
 Sheet metal bender
 Air compressor pancake
 Electric fence supplies
 Stihl MS 260 chainsaw
 Craftsman 42-in. cut riding mower
 Metal chop saw
 Electric pole saw
 Weed eater, electric
 House jacks
 Pipe vise
 Bolt cutters
 Sockets • Wrenches • Ratchet straps
 Log chains • Come alongs
 Jumper cables
 Jack stands • Bottle jacks • Handyman jack
 Concrete blocks
 Lot traps
 Caulk guns • Nails
 Carpenter box
 12-2 wire, new
 Wooden ladder
 Lots of hand tools
 Tire tools
 Air nailer • Brad nailer
 Tool pouches
 Electric drills • B & D grinder
 Band saw, hand held
 Rope • Drill bits • Files • Hatchet • Screwdriver
 Lot Craftsman wrenches & sockets
 Job box
 Electrical supplies
 Wire grinding wheels
 Rubber floor mats
 5-gallon buckets
 Horse head bell
 Sawhorses
 4-wheeler jack
 Tank sprayers

Grinders • Saw boxes
 Slide hammer • Impact drill
 Air impact, 3/4-inch
 Angle grinders
 Big ammo boxes • Toolboxes
 Targets
 Body & fender set
 Gun cleaning kit
 Airless paint sprayer
 Sand blaster
 Lot air tools • Nails for nail gun
 Lot scrap iron
 Vise • Wedges • Splitting maul
 I beam
 Live trap
 Battery charger
 Trailer balls, hitch pins & lights
 Tank heaters
 Stihl facemask
 Lot gas cans • Electric cords
 Rakes • Shovels • Garden hose
 Log turner • Lumber stack
 Wheelbarrows • 2-wheel dolly
 Lot floor jacks
 Metal barrels • Shelving
 Ladder • Wooden ruler • Tape measure • Levels
 Pole saw • 1/2-inch drill • Skil saw
 Lots saw oil mix
 Twist lock cable, electric
 Reece hitch
 Speed square
 Extension cord for welder
 Leaf blower, electric
 Shop vac, 16-gallon
 Magnet taillights
 Dog crate
 4-wheeler ramps
 Cream cans
 Boat paddles
 AlumaCraft canoe
 Kayak
 Front tine tiller
 Toboggans
 Wood stove
 Porch swing
 Birdbath
 Claw foot bathtub
 Old wooden door
 Granite top kitchen cabinet
 Wooden kitchen chairs
 Carpet
 Muck boots
 Waders, size 9
 Exercise equipment

Horse Trailer, Carts, Saddles & Tack

1986 bumper hitch
 2-horse trailer with tack room, Mustang
 Philips 2-horse straight load trailer
 Training cart
 Single horse cart
 Single shaft 4-wheel wagon on springs
 2-Wintec saddles, 16-inch
 2-three tier saddle racks
 Four tier saddle rack with blanket bar
 Lots & lots horse tack
 Several sets of harnesses single & double
 Clinton Anderson training halter
 2-wheel show cart
 Andy's horse clippers
 Leather tools
 Horse fence feeders

Guns & Ammo

Henry .22 cal. lever action rifle 442805H
 Ruger 10/22 rotary box magazine 353-32985
 H & R 20-ga. shotgun NZ654143
 Marlin Model 60 .22 cal. rifle MM08178L
 Smith & Wesson 22A UBT2628
 Heritage .22-cal. revolver 6.5 in. barrel F71149
 Smith & Wesson Model 60 .357 magnum revolver CP51327
 Taurus 7-round .357 revolver ZH418459
 AR-536 prism sight 5x tactical sight
 AR-15 Caldwell mag charger .380 ammo, several rounds
 9 mm ammo
 .38 ammo
 .223 ammo
 .30-30 ammo
 .357 ammo
 .22 ammo
 20-ga. ammo
 .410 ammo
 Gun cases
 Gun cleaning supplies
 Game cameras
 Other items too numerous to mention.

Tony Bufalo - Owner

Terms-Cash or Approved Check. Nothing Removed Until Settled For. Not Responsible For Accidents. Must show ID to get Buyers #. All guarantees are between buyer and seller. Announcements Made Day Of Sale Take Precedence Over Printed Matter.

Buckner & Gately Auction Service

Auctioneers

Steve Buckner, LLC 573-674-2686

Neal Gately 573-202-3132

PUBLIC AUCTION

October 31, 2020
2471 CR 4210 Salem, MO - 9:30 AM

HOUSEHOLD– Sectional couch, 2 dressers, 2 entertainment centers, 3 bookcases, dining room table with 6 chairs, high top table with 4 chairs, gun cabinet, TVs, 4 large shelves, 3 small shelves, DVD players, dishes, cookware, upright freezer, piano, miscellaneous kitchen items, linens, craft supplies, Donkey Kong arcade game, pool table.

OUTSIDE – Patio table and 5 chairs, basketball goal, 2 outside tables, lumber, play house/hunting hut (will have to be taken down), older outside wood furnace, ramps, lawn trailer, trolling motor (new in box), boat seats, Stihl chop saw
2004 4-Wheeler Polaris 600 4WD, small 4-wheeler trailer

GUNS – American Tactical Milsport 5.56 AR new in box with red dot scope, Weatherby Vanguard 270 Win Sporter #2 LA2A 24 SS new in box, Browning BPS 12 gauge 3.5 shotgun, MORE guns to be added

REAL ESTATE – To be offered with sellers confirmation day of sale. 3 bedroom 2 bath manufactured home sitting on 12.8 acres located in the R-80 school district. Drilled well. Property has a 24x40 workshop with concrete floor, electric and a bay door. Small storage shed. 7 miles to town. A non-refundable 10% down payment will be collected day of sale, balance within 45 days.



Seller is relocating and has many items still to be added. This is a nice piece of property close of town - See you there - Raymond

Follow us on Facebook: Quick Auction Service LLC

QUICK Auction Service

Col. Raymond Quick (573) 247-3834 ray_quick1964@yahoo.com – Col. Brady Hagler

TERMS: Cash or Approved check . Nothing removed until settled for. Not Responsible for accidents. Refreshments available

ANNOUNCEMENTS AT AUCTION TAKE PRECEDENCE OVER PRINTED MATTER

Sam
CRAWFORD AUCTION SERVICE LLC

Will sell the following located from Wheatland, Mo., 4 miles South on Hwy. 83 to Co. Rd. 240, then West 1 mile to Co. Rd. 159 then South 3/10. Watch for Crawford Auction signs.

Saturday, November 7, 2020 – 9:30 a.m.

HOUSEHOLD – TRACTOR – TRUCK – TRAILERS – FARM – TOOLS – MISC.



See website for more pictures!

Tractor-Truck-Trailers

Sells @ 12 Noon

'02 Ford 250 2x4, 7.3 dsl, 5spd, 300K hwy. miles w/3 weather guard alum tool boxes & 12V fuel pump & tank
 Ford 3910 dsl w/Ford 7309 loader, 42hp (just got out of shop), clean, runs good

3pt 6' box blade; 3pt 5' brush cutter
 3pt bale spike
 '14 B/H cargo trailer 14', 7' tall, V nose, nice
 16' B/H utility trailer, 7' wide

Guns-Knives

Sells @ 9:30am

Winchester 100 308 w/scope
 .22 survival rifle; Some 308 ammo
 Hard & soft gun cases
 Deer & turkey decoys
 2 Blinds CoCoon hunting blind
 Clay targets & thrower
 Other hunting misc.
 25-30 Pocket & hunting knives, mostly Case

Household

Collection of Blue Willow dishes
 2 Gone With The Wind lamps
 Antiques kitchen cabinet/safe
 Reproduction oak cabinets
 Elec range; Elec water heater
 Whirlpool chest freezer, med
 Small refrigerator
 Set older silverware w/case
 Other misc.

Farm-Tools

(29) 12' port. panels; 1 walk thru
 2 Poly feed bunks; 2 Bale rings
 3 Water tanks
 Sev 4x4 & 4x6 CCA timbers
 Some treated poles; Lot steel posts
 15-20 sheets used plywood
 Other lumber
 20'x30' metal frame building frame
 Stihl 034 & 017 chain saw
 Stihl TS 400 concrete saw
 Swisher 28 ton wood splitter
 Craftsman rear tine tiller
 Push mower; Set lg. end wrenches
 Craftsman 3/4 socket set
 Other wrenches & sockets
 Long handle tools; Concrete tools
 Concrete vibrator; 12V sprayer
 2" water pump & hose
 Concrete drill & bits
 Other power tools
 Lincoln 110 welder
 Sev 12V flashing lights for p/u
 Log chains; Clevises
 HD ratchet straps
 HD rope; Sev. C clamps
 Jumpers cables; Ext. cords

4-5 jacks stands; Greenlee job box
 Barrel dolly; Husky 2 tier tool box
 Steel & plastic barrels
 Barrel w/bulk grease; Gas cans
 Air tank
 Pancake air compressor
 Comealongs
 2 Transits; Air mail gun, nails
 Nails & screws; Battery charger
 4 Live traps (2) 100# gas bottles
 Fuel & oil filters for 7.3
 Used tires; Saw horse
 Motorola 2 way radio, new
 Fill Rite 12V fuel pump
 Sev ice chests, coolers
 Jennaire BBQ grill
 Patio propane heaters
 25-30 Rods & reels; 6-8 Tackle boxes
 Boat seats; 2 Fly rods
 Fishing lights & camera
 Lures; Life vests, water toys
 6-8 Wood folding tables
 Folding chairs; Lg barrel smoker
 Red Head meat grinder & slicer
 Cast iron cookware
 French fry cutter; Lot other misc.

**Lots of good items in this auction.
 Everything well cared for.
 Possible 2 rings for awhile.**

Sam
CRAWFORD LLC
Auction Service



TERMS: Cash or good check. Nothing removed until settled for. Not responsible for accidents. Lunch available. Statements made day of sale take precedence over printed matter. All items sell as is. No warranties given or implied.

Cross Timbers, Mo.
 CrawfordAuctionService.com

Sam 417-328-9137 Chase 417-399-1904 Chance, CAI 417-298-1781 Tom Poynter Jack Lancaster

Kenneth & Millie Anderson

PUBLIC AUCTION

MILO, MO

AUCTION

As We Have Sold Our Farm We Will Sell The Following Household, Collectibles, Tractor's, Trailer, Machinery, Tools And Misc. At The Farm Located At 26096 East Hwy. E Milo, Mo. From Milo Go East 8 1/2 Miles On E Hwy. To The Sale Or From El Dorado Springs Go South 10 Miles To The Junction Of 97-CC-E Highways Go West 8 Miles On E To The Auction On

SAT. NOV. 7, 2020 At 10:00am

WATCH FOR AUCTION COMPANY SIGNS • LUNCH SERVED

FOR MORE PICTURES GO TO: WWW.BRUCEANDLEANAUCTION.COM



TRACTORS

- 2016 John Deere Model 6155M Cab 4X4 Tractor 155 H.P. W/Deff, Air Seat, 4 Speed/4 Range With Reverser, 393 Hrs. Buddy Seat, 2 Sets Of Hyd. Outlets
- 2012 John Deere Model 7230 Cab 4X4 Tractor 130 H.P. Pre-Deff, Sells W/H-360 Front End Loader (Bucket & Bale Spike) 2766 Hrs. Synco Trans. 4 Range-3 Speed, 2 Sets Hyd. Outlets, Buddy Seat
- 2013 John Deere Model 6115-D Cab Tractor 115 H.P. Pre-Deff, Air Seat, 735 Hrs. 3 Speed 3 Range W/Power Reverser, Loader Prep. Package, 2 Sets Hyd. Outlets, 2 Wheel Drive
- All Tractors Have Been Taken Care Of And Have Been Serviced By Local Dealer

STOCK TRAILER-EQUIP.

- 2007 W-W Bar Top 24' Gooseneck Stock Trailer, Butter Fly End Gate, 14 Ply Tires, Tarp Top, Rubber Floor, Used Very Little (Good Condition)
- John Deere Model 567 Round Baler, Twine Tie, 540 Rpm, Mega Wide, Bale Kicker, Bale Count At 7120 Bales
- 2016 John Deere Model R-240 3Pt. 7' Disk Mower (Used 2 Years)
- New Holland Model 258 5 Bar Rake
- 2014 John Deere Mx15 Batwing Brushhog, Dom Deck, Airplane Tires
- 2-3 Point Slide Under Bale Forks
- Bush Hog 3 Pt. Phd-2103 Post Hole Digger (Used Very Little)
- 3 Pt. Cone Grass Seeder
- 10' Pull Type Tandem Disk Ser. Blades
- 8' Landpride Blade
- 7' 3 Pt. Rhino Brush Hog (Has Leak In Gear Box)
- 3 Bottom Lhc Plow
- 3 Ton Sq. Upright Metal Feed Bin
- 3 Ton Creep Feeder On Rubber
- 5 Poly Feed Bunks
- 10 Poly 10' Ground Feed Troughs
- 2 Galv. Stock Tanks
- 2 Back Rubbers
- 10 Bale's Of Sisal Twine 16,000

MOWER-TOOLS-HOUSEHOLD

- John Deere Model X380 Riding Mower 22 H.P., 40 Hours, 48" Cut
- (Like New)
- Craftsman 5 H.P. 30 Gallon Air Compressor
- Craftsman Tool Box
- Misc. Hand Tools
- Misc. Fluids And Oils
- Post Puller
- Wire Unroller
- Steel Post
- 16' Alum. Ext. Ladder
- Com-A-Longs
- Tool Boxes
- Neck Yokes & Single Tree's
- 44" Lawn Gate
- Amana Side By Side Refrigerator/Freezer
- Kenmore Automatic Washer And Electric Dryer
- Kenmore 30" Electric Range
- Ant. Kitchen Table W/ 5 Chairs
- 2 Cradle Rockers
- Office Desk
- Sev. File Cabinets
- Live Trap
- One Lot Of Misc.



AUCTIONEERS NOTE:

Here Is A Very Nice Offering Of Late Model Tractors And Machinery That Have Been Serviced And Taken Care Of And Used Only On This Farm. Note 10:00 Am

Start Time, Don't Be Late There Are Not Alot Of Small Misc.

Items Will Not Take Long.

OWNERS: MR. & MRS. BILL YARBERRY

TERMS: Everything sells as is, where is. Nothing is to be removed until settled for. Payment of Cash, Check with Proper ID, or Credit Cards. Auction Company or the Owners will not be responsible for loss of items or accidents. Statements made the Day of the Auction take Precedence over Printed Matter.

SALE CONDUCTED BY **BRUCE & Le'AN AUCTION & APPRAISAL, LLC**
THE AUCTION COMPANY THAT APPRECIATES YOUR BUSINESS

For more information and pictures go to our website at www.bruceandleanauction.com

RONNIE BRUCE - Fair Play, MO
417-777-1685 or 417-654-2214
colronbruce@gmail.com

BRANDON BRUCE
Fair Play, MO

BILLY BRUCE - Stockton, MO
417-399-4800
colbbruce@gmail.com

BUFFALO LIVESTOCK MARKET LLC



276 Hwy 32 West
Buffalo, Missouri
Oct. 24th, 2020
Receipts: 989 Head
Feeders Mostly Fleshy and
Unweaned Traded \$3-\$5 Lower.

Representative Steers

300-400 @ 140.00 to 155.00
400-500 @ 131.00 to 153.00
500-600 @ 128.00 to 148.00
600-700 @ 125.00 to 135.00
700-800 @ 125.00 to 134.00
800-900 @ 119.00 to 126.50

Representative Heifers

300-400 @ 125.00 to 140.00
400-500 @ 115.00 to 137.00
500-600 @ 114.00 to 130.00
600-700 @ 108.00 to 123.00
700-800 @ 104.00 to 114.00

Feeder Bulls

400-500 @ 122.00 to 144.00
500-600 @ 113.00 to 130.00
600-700 @ 85.00 to 118.00
700-800 @ 85.00 to 109.00
800-900 @ 80.00 to 82.00

Holsteins

\$75 to \$85

Bred Cows

\$800 to \$1075

Open young 3-5 yr.

Thin Cows to Rebreed \$65 to \$78

Slaughter Cows

1400# Up 60.00 to 65.00

Med. Flesh Boning Util.

50.00 to 59.00

Lean Thin Flesh 44.00 to 50.00

X Thin 44.00 Down

Slaughter Bulls

High Dressing 87.50 to 90.00

Med Dressing 77.00 to 86.00

Low Dress Light Carcass

65.00 to 70.00

Wean Vac Special Sale
Saturday, November 7th

MON-WED MARKET REPORT

Listen to KJEL 103.7FM • Lebanon or KYOO 99FM • Bolivar

VIEW OUR SALES AT CATTLEUSA.COM

CALL FOR TRUCKING OR ON-FARM VISIT

Lyle Caselman • Owner-Manager
417-345-7876 • mobile 417-533-2944
Leon Caselman • Owner
417-345-4514 • mobile • 417-588-6185
Howard Miller • Owner 417-345-8122

Callaway Livestock Center, Inc.

Kingdom City, MO

Watch live or bid online thru D.V. Auctions
www.CallawayLivestock.com

SPECIAL COW SALE

THURSDAY NIGHT
NOV. 5th, 2020 AT 6:00PM

Estimating 800 to 1000 hd of Bred Cows,
Cow/Calf Pairs & Breeding Bulls.
EARLY CONSIGNMENTS

Berghorn Dispersal

70 Home raised Blk or BLWF Cows. 3-6 yrs. old. 25 will have fall calves by side, ear tags match their mothers. Lot of Gerloff Genetics remainder of cows will be 2nd or 3rd period. Bred to Angus or Hereford Bulls.

Holshlog Dispersal

60 Home raised Blk or BLWF Cows, be 4-SS. Few cows will have calves by side. Bred to fancy Registered Angus Bulls.

Ellen Brock Dispersal

20 Fancy Angus 4-5 yrs. old. Registered Cows sell with no papers. Calve Feb., bred to Sydgen Bulls. Lot of Gardner breeding in cows.

Nuener Dispersal

39 Fancy, very gentle Red Angus Cows. 3-5 yrs. old. 30 of these cows have fancy Red Angus calves by side, remainder will be 3rd period. Bred Red Angus.

2 4 yr. old Red Angus Bulls.

Simpson Dispersal

50 Fancy 3 yr. old Blk or BLWF Cows. Bred Angus. All shots. Due to start calving mid Jan. Dispersal of all spring cows, these cows are all full sisters.

60 Fancy Blk or BLWF Cows. 3-4 yrs. old. Bred to Registered Angus Bulls. All shot, start calving in Feb., very gentle.

12 Blk or BLWF Cows. 3-5 yrs. old with fancy fall calves by side.

30 Fancy Red Angus Cows. 3 to 6 yrs. old with fancy 2-300 lb. calves by side.

40 Big fancy Blk or BLWF Cows, 5-7 yrs. old. Bred Registered Angus Bulls, due to calve mid Jan.

16 Big fancy Angus Cows. 7-SS. Bred to Mead Angus Bulls, due to calve Feb.

15 Fancy, very gentle 3 yr. old Blk or BLWF Cows, bred to Angus Bull. All full sisters. Due to calve mid March.

30 Blk or Char Cross Cows. Cows will be 7-BM. Bred Angus Bulls. 2nd-3rd period.

25 Fancy Blk or BLWF Cows. 3-6 yrs. old. Bred Blk Bulls, 3rd period.

22 Fancy Blk or BLWF Cows. 3-6 yrs. old. Bred Blk Bulls. Cows will be 2nd period.

18 Fancy Blk or BLWF. 1st calf hrs. Weigh 1050-1100, bred low BW Angus Bull. Due March 1st, very gentle.

47 Fancy Blk or BLWF Cows. 3-5 yrs. old. Bred Sydgen Angus Bulls. 2nd or 3rd period. Complete mineral and health program.

5 Fancy 18 month old Purebred Angus Bulls, no papers.

2 20 month old Blk Sem Angus Bulls.

2 3 yr. old Registered Red Angus Bulls. Calving ease Redemption Blood line, Trig & Semen ready to go.

This is an early listing, several more cows & bulls by sale day.
In house buyers welcome!

This ad was prepared 2 weeks before sale. Many more expected by sale day. All bulls sell at the start of the sale at 6:00pm.

For more information contact:
Jack Harrison 573-999-7197 • John P. Harrison 573-220-1482
Roger Temmen 573-680-4538 • Glenn Stagman 573-619-8495
Claude Niemeyer 573-470-1017 • Justin Oberling 217-440-7724

CALLAWAY LIVESTOCK CENTER INC.
573-642-7486

Moniteau County REAL ESTATE AUCTION

• FRIDAY, NOVEMBER 14, 2020 • 11 AM •

AUCTION & PROPERTY LOCATION:

33349 Scherff Road, Clarksburg, MO 65025
FARM LOCATION: From California take Hwy. 50 west approximately 4 miles to Rt. E and go south approximately 3.5 miles to farm.

Offering 65 acres in three tracts including two story house, several newer outbuildings including egg production facility and highly improved farmland in Moniteau County.

The property has been certified organic the last five years.
Multi - Parcel auction system will be used to sell the property.



PRE-AUCTION PROPERTY VIEWING

Monday, November 2 from 4 PM to 6 PM

Visit wheelerauction.com for more information!

SELLERS: ELVIN & ANNETTA ZEISEL

Wheeler
AUCTIONS & REAL ESTATE
23101 HWY. 24, PARIS, MO 65275 | 660-327-5890
WWW.WHEELERAUCTIONS.COM

For more information call
Wheeler Auctions
at 660-327-5890 or
visit wheelerauctions.com.

2014 HOYT CARBON ELEMENT BOW: w/case and lots of accessories. \$675. Lebanon, 573-453-4100.

2020 POLARIS GENERAL: 4 1,000 4 x 4 930 miles, many extras, \$22,500. 417-559-9339.

LOG SIDING SALE: 2X8 Western Cedar .99 ft/ Pine \$1.30 ft while supplies last. www.pineridgerustic.com 573-729-7226.

ROD AND REELS: fishing season is coming. \$5 and up. Conway, 417-589-8200.

WANTED: Old Military Rifles and Pistols. 816-838-6254.

62 CLIVE CUSSLER BOOKS: \$4 for paperback, \$10 for hardbound. Excellent Condition. For a list call 417-457-1023.

AUNT BEE'S MAYBERRY COOKBOOK: \$7.50. 417-532-2045, Lebanon. leave phone number.

COZY HOME W/CHAINLINK FENCED BACK YARD: 2 bedrooms on main level and 3rd upstairs, ch/a on main, upstairs window/wall unit, newer appliances. 417-531-5828. Lebanon.



MID MISSOURI STOCKYARDS

REGULAR SALE EVERY THURSDAY 11AM

SPECIAL COW SALE • NOV. 7TH • 6 P.M.

For Farm Visits, Market Updates, or Trucking
Call **Zach Cox 417-777-1320**
Dan Romine 573-578-4939

**Competitive Buyers!
Competitive Commission!
Competitive Market!**

Barn: 417-532-9292 
I-44 • Exit 123 "just outside of Lebanon"
17505 Route 66, Phillipsburg, MO 65722
For weekly market updates, visit us at
www.midmostockyards.com

BITTERSWEET AT A GLANCE BOOK: hardback, \$15.00. 417-532-2045, Lebanon, leave phone number.

ATTN PREPPERS: Preparedness Meetings happening every Tuesday night in Lebanon MO, starting November 3rd. Call 417-830-4039 for details.

VILLA HOMES IN ROLLA: Has NEW and USED Mobile Homes. Call David for info: 573-578-8072.

KITCHEN FAUCET MOEN: single lever, sprayer, new cartage. \$55. obo 636-239-2695.

WANTED TO BUY ANTIQUE CARS: Convertible, Corvettes, unrestored, motors, parts considered. 870-324-1154.

WEATHERED BARN WOOD SIDING: 8" & 10" wide. 573-729-7226. www.pineridgerustic.com

2-55/65 R18 TIRES: good for spares. \$10each. 417-457-1023.

CALUS LOGGING

20 YEARS EXPERIENCE

Buying Standing Timber
Walnut & Oak

Joe Calus, Owner
417-926-4606 • MTN. GROVE

CERTIFIED



Salem Livestock Auction
Hwy. 32 Salem, MO • 573-729-8880
Over 40 Years in the Livestock Business

CATTLE SALE EVERY MONDAY AT 12:00
Feeder Calves to sell at 12:00pm • Butcher & stock cows following

Luke Peterson • 417-259-0036
Shawn Chadwell • 417-830-0209
Bryce Lauderdale • 417-255-5124

Field Representatives
Wright & Surrounding Counties
We Appreciate Your Business!

All Consignments Welcome Up Until Sale

Allen Thompson 417-932-4097	Renee Lauderdale 417-926-2682	
Chuck Thompson 417-257-5610	Brandon Barton 417-259-1597	

Terms of Sale: Cash or Approved Check!

OLIVER 1650 DIESEL: has cab/, narrow front, runs good, \$3,750obo. 573-690-9406.

CHERRY PICKER: made from double strength pipe, \$125. Willow Springs 417-469-0325.

2-JOHN DEERE REAR RIMS: 1138 ,new. \$200. 417-766-1991

QUALITY REPLACEMENT COWS: COW/CALF PAIRS, BRED HEIFERS AND BREEDING BULLS, TRUCKING AVAILABLE. Otterville, 660-619-5190 or 573-230-7700.

PT CRUISER: Good condition, \$2,500. Marshfield, 417-859-4401.

QUALITY CONSTRUCTION.
HONEST SERVICE. GREAT VALUE.

FULLY INSURED

Roofing • Remodels • Decks • Siding
• Concrete • New Construction

 **RAINBOW CONSTRUCTION** CALL FOR FREE ESTIMATE
(417) 217-3572



Horse Sale

1st Wednesday of each month
Nov. 4th, 2020

Tack will start @ 6:00pm then Horses to follow
Expecting Several Head of Horses.

MARKET IS REALLY GOOD!

All Consignments Welcome
Buyers From All Across the U.S.

All Classes of Horses
For more information or consignments, please call:
Kip: (573) 368-9402
Isaac (417) 327-2355
Denver: (417) 399-2701
Steve: (417) 894-1070
Trucking Available
Restaurant Open @ 5:00 pm

"Celebrating our 61st year"

Roberts Bros. Sale Barn

1416 E. Hwy. 32 – Bolivar, MO
(417) 326-5815
Like Us On Facebook!

FIREARMS: Professional Repairs and Restorations. Baron's Gunsmithing. 573-363-5801, Camdenton.

THE FIRST 100 YEARS OF SOUTHWEST MISSOURI STATE UNIVERSITY: in Springfield. Hardback, \$12.50. 417-532-2045, Lebanon. leave phone number.

RABBITS: Hotot dwarf, mini lopears, 636-629-0113.

175 ORIGINAL VCR MOVIES: \$1/piece. 573-327-9068.



BIG BOYS TOYS

Be A Part
Of Our
Big Holiday
Edition
November 5,
2020

If you sell guns, four wheelers, motorcycles, bows, hunting equipment, electronics, recliners, furniture, tickets, travel, tractors, mowers, storage buildings, truck accessories, wheels, window tinting, antiques, RV's, horse

and tack, knives, trailers, land, jewelry, tools, and just about anything else a guy might like for Christmas, then you will want to have your business represented in this special edition of the Weekly Trader.

November 5th Edition
Regular Weekly Trader ad sizes & rates apply.
12,000 copies of the Weekly Trader are delivered to 32 counties in Missouri.



Call Your Weekly Trader Sales Representative Today!

Debbie Calvin: 573-465-3753 | Alonda Jones: 417-259-1751 | Monica Shoots 573-408-0161 | Mariah Shepherd: 417-664-6267
Bethany Cranmer: 417-664-8264 | Shawna Bradley: 417-322-3814 or Jennifer Early 417-532-9131



**Deadline
Friday,
October 30
at Noon**

15 HEREFORD HEIFERS: Open and ready to breed. 573-701-7828.

TUFFY SPECIAL -Volume Prices 573-657-2176 amegamobilehomes.com


AMERICAN MADE 9MM: Brass, ammo, not reloads, \$.40 per round. 417-399-6687

ANTIQUE KEROSENE STOVE: 4 Burner w/oven. \$175. 573-438-2672.

A SETTLEMENT HISTORY OF FORT LEONARD WOOD AREA: including forgotten towns of Pulaski County, cemetery listings, etc. \$15.00. 417-532-2045, Lebanon. Leave phone number.

ALL OF OUR FOREST RIVER VIKINGS ARE PRICED AT WHOLESALE!

764V	2020 Viking 175FQ MSRP-\$19,510.....	\$14,911
763V	2020 Viking 175BH MSRP-\$20,090.....	\$15,811
761V	2020 Viking 18RBSS MSRP-\$23,811.....	\$18,963
766V	2020 Viking 21FQ MSRP-\$24,256.....	\$19,860
768V	2020 Viking 21BHS MSRP-\$25,742.....	\$19,975
767V	2020 Viking 24RBS MSRP-\$29,466.....	\$21,880



WehrRVs
11311 Bus. 60,
Mtn. Grove, MO
1-800-288-6827
www.wehrfordofmountaingrove.com



Cutting Land Pride GET WORK DONE.

RCR18 SERIES
ROTARY CUTTERS
20-65 HP 60" 72" Widths

- Cat. 1 Hitch
- 2" Cutting capacity
- Fully welded deck
- Full length skid shoes

LP CONSISTENTLY LEADING THE WAY...

AGRI-ENTERPRISES
The Outstanding Products & Service
1-1/2 Miles South Of Licking, MO On Hwy 63
573-674-2203 • 1-800-653-7152
www.agri-enterprises.com

2005 HYUNDAI XG350L: 4-Dr, V6, Auto, Leather, Cold Air, Runs Good, Needs Rear Struts, \$950.00. Call for info. 417-543-0048. Mansfield.

REGISTERED HEREFORD & ANGUS BULLS: Home raised, Some Show-Me Select Qualified. 573-701-7828. Belgrade

MIXED GRASS HAY: 4x5 bales, twine wrapped, \$30. Picked up in field. Delivery available. Vichy, MO. 573-578-6212.

I BUY.....used mobile homes. Call or text 573-338-6250 or email GregS.CDH@outlook.com

A SETTLEMENT HISTORY OF FORT LEONARD WOOD AREA: including forgotten towns of Pulaski County, cemetery listings, etc. \$15.00. 417-532-2045, Lebanon. Leave phone number.

EARNIE DEANE OZARKS COUNTRY BOOK: A collection of articles about folklore, places, people, customs, history. \$7.50. Lebanon. 417-532-2045, Lebanon. leave phone number.

MISSOURI GARDENER'S GUIDE: 421 pages, over 170 color photos, \$5.00 417-532-2045. Lebanon. Leave phone number.

TRUSTED & THOROUGH SERVICE

Repairs • Rebuilds
Cast Iron & Steel Welding
Engines • Transmissions
Electrical • Hydraulics
PTO & Drivelines

VALLEY SHOP • 660-458-6747
38745 Molasses Mill Rd, Latham

SPECIALIZING IN STUD FRAME & POLE BARN BUILDINGS



30+ Years Experience

Broeckelman Metal Buildings

Allen Broeckelman • Lebanon, MO
417-650-5600

CUSTOM SAW MILLING: Lebanon. 417-533-4607, 417-664-1195.

NO \$\$\$ DOWN MOBILE HOMES- Call for details 573-499-9993 columbiadis-counthomes.com

VEHICLES: 1927-1991 www.goheartland.com 417-343-6354.

CHIPPER/ SHREDDER: Stanley 11 HP, 270cc engine. Like new \$700. Norwood,~ 417-459-6313.

LIONEL TRAIN SET: Steam engine, tender, caboose and other car, track and transformer. \$195. 573-364-7465, Rolla.

NORDIC CROWN II HOT TUB: W/steps. \$2,250 obo, Washington. 636-239-2695.



YOUR AD GOES HERE!

Add YELLOW Color For An Additional \$3 Per Reader Ad

All ads will include Phone Number (unless requested to be deleted by advertiser) and City Or Town, Phone Number with Area Code counts as one word. City or Town counts as one word.

RATE: 80¢ Per Word. All Classified Ads Require Payment Before Print.

(1) 80¢	(2) \$1.60	(3) \$2.40	(4) \$3.20
(5) \$4.00	(6) \$4.80	(7) \$5.60	(8) \$6.40
(9) \$7.20	(10) \$8.00	(11) \$8.80	(12) \$9.60
(13) \$10.40	(14) \$11.20	(15) \$12.00	(16) \$12.80
(17) \$13.60	(18) \$14.40	(19) \$15.20	(20) \$16.00
(21) \$16.80	(22) \$17.60	(23) \$18.40	(24) \$19.20
(25) \$20.00	(26) \$20.80	(27) \$21.60	(28) \$22.40
(29) \$23.20	(30) \$24.00	(31) \$24.80	(32) \$25.60
(33) \$26.40	(34) \$27.20	(35) \$28.00	(36) \$28.80
(37) \$29.60	(38) \$30.40	(39) \$31.20	(40) \$32.00

Place your Classified Ad TODAY!

417-532-2800 • 800-665-8875

Fax: 417-532-8140

Or Mail To: P.O. Box 192 • Lebanon, MO 65536

For your convenience we accept MasterCard, Visa, Discover or American Express



DEADLINE FOR CLASSIFIED ADS: FRIDAY 4:00PM!

Name _____

Address _____

City _____ Email _____

State _____ Zip Code _____ Phone _____

Ad Total \$ _____ X # Weeks _____ = Amount Enclosed \$ _____



KYMCO

New at WCT!



**Like 150i Classic
Noodoe w/
Smart Features
\$3,299**



**Like 200i LE
\$2,849**



**K-Pipe 125 LE
\$2,449**



**Spade 150i LE
\$3,599**



**UXV 450i
\$7,999
INCLUDES ROOF**



**Mongoose 70S
\$2,399
Mongoose 90S
\$2,699**



WCT Farm & Lawn LLC

"Big enough to get what you need, small enough to know your name"

417-859-4311 • www.wctfarmandlawn.com

3299 E Evergreen Rd, Strafford, MO 65757